



GAMMA RAY
NEUTRON
COMPLETION LOG

Company TAILWATER, INC.
Well WITTMAN #5-T
Field GARNETT SHOESTRING
County ANDERSON State KANSAS

Location: 165° FSL & 495° FEL
S/W SE SE SE
AP# : 15-003-25326-00-00
Other Services

Permanent Down G.L. Elevation 978EST
Log Measured From G.L. Elevation 978EST
Drilling Measured From G.L. Elevation 978EST

Date 7-25-2012
Run Number 1 NW
Depth Driller 784'
Depth Logger 766.3'

Top Log Interval SURFACE
Bottom Logged Interval 766.3'
Fluid Level FULL

Type Fluid WATER
Production Casing 2 7/8" @ 774'
Max. Recorded Temp @
Estimated Cement Top @
Calculated Cement Top @
Amount & Type Cement @
Drilling Contractor EVANS ENERGY
Equipment Number 107
Location UDEU, D.
Recorded By HUTCHINSON, D.
Witnessed By

<<< Fold Here >>>

All interpretations are opinions based on inferences from electrical or other measurements and we cannot and do not guarantee the accuracy or correctness of any interpretation, and we shall not, except in the case of gross or willful negligence on our part, be liable or responsible for any loss, costs, damages, or expenses incurred or sustained by anyone resulting from any interpretation made by any of our officers, agents or employees. These interpretations are also subject to our general terms and conditions set out in our current Price Schedule.

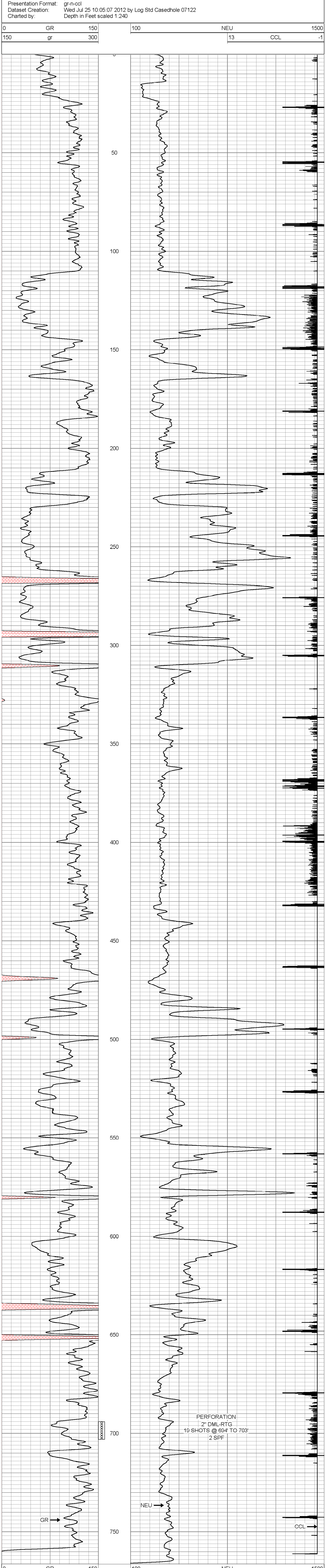
Comments

THANK YOU

Sensor	Offset (ft)	Schematic	Description	Len (ft)	OD (in)	Wt (lb)
GR	7.59		GR-TITAN_169 (TIT169_001) Titan 1 11/16" Gamma Ray	4.75	1.69	20.00
CCL	5.05		CCL-TITAN_169 (TIT169) Titan 1 11/16" Logging CCL	1.83	1.69	7.50
NEU	0.63		NEU-TITAN_169 (TIT169_001) Titan 1 11/16" Neutron	4.33	1.69	20.00

Dataset: wittman #5-t.db: field/well/run1/pass1
Total Length: 10.92 ft
Total Weight: 47.50 lb
O.D.: 1.69 in

Database File: h:\wittman #5-t.db
Dataset Pathname: pass1
Presentation Format: gr-n-ccl
Dataset Creation: Wed Jul 25 10:05:07 2012 by Log Std Casedhole 07122
Charted by:



PERFORATION
2" DML-RTG
19 SHOTS @ 694' TO 703'
2 SPF

0 GR 150 150 gr 100 NEU 1500 13 CCL -1

Company TAILWATER, INC.
Well WITTMAN #5-T
Field GARNETT SHOESTRING
County ANDERSON SEC. 16 TWP. 20S RGE. 20E
State KANSAS Date 7-25-2012

