



DIGITAL LOG (785) 625-3858

Dual Induction Log

15-141-20,450-00-00

API No.

Company Barline Oil, LLC.

Well Vohs #1

Field Unnamed

County Osborne State

Kansas

Location 330' FNL & 2310' FWL

Sec: 34 Twp: 8 S Rge: 13 W

Permanant Datum Ground Level Elevation 1682

Log Measured From Kelly Bushing 8 Ft. Above Perm. Datum

Drilling Measured From Kelly Bushing

Other Services

CNL/CDL
MEL
Elevation
K.B. 1690
D.F.
G.L. 1682

Date 6/17/2012

Run Number One

Depth Driller 3550

Depth Logger 3548

Bottom Logged Interval 3547

Top Log Interval 200

Casing Driller 8.625 @ 210

Casing Logger 210

Bit Size 7.875

Type Fluid in Hole Chemical

Salinity,ppm CL 4,000

Density / Viscosity 9.3 61

pH / Fluid Loss 10.0 9.4

Source of Sample Flowline

Rm @ Meas. Temp .60 @ 70

Rmf @ Meas. Temp .45 @ 70

Rmc @ Meas. Temp .81 @ 70

Source of Rmf / Rmc Charts

Rm @ BHT .37 @ 114

Operating Rig Time 3 1/2 Hours

Max Rec. Temp. F 114

Equipment Number 91

Location Hays

Recorded By K. Bange

Witnessed By Bill Ree

<<< Fold Here >>>

All interpretations are opinions based on inferences from electrical or other measurements and we cannot and do not guarantee the accuracy or correctness of any interpretation, and we shall not, except in the case of gross or willful negligence on our part, be liable or responsible for any loss, costs, damages, or expenses incurred or sustained by anyone resulting from any interpretation made by any of our officers, agents or employees. These interpretations are also subject to our general terms and conditions set out in our current Price Schedule.

Comments

Thank you for using Log-Tech, Inc.
(785) 625-3858
Osborne, 5 S to 150 rd,
6 W and S to 170 rd,
(follow curves),
1/2 S, E into

Database File: c:\warrior\data\barline_vohs #1\barlinehd.db
Dataset Pathname: dil\barstack
Presentation Format: dil2in
Dataset Creation: Mon Jun 18 12:49:48 2012
Charted by: Depth in Feet scaled 1:600

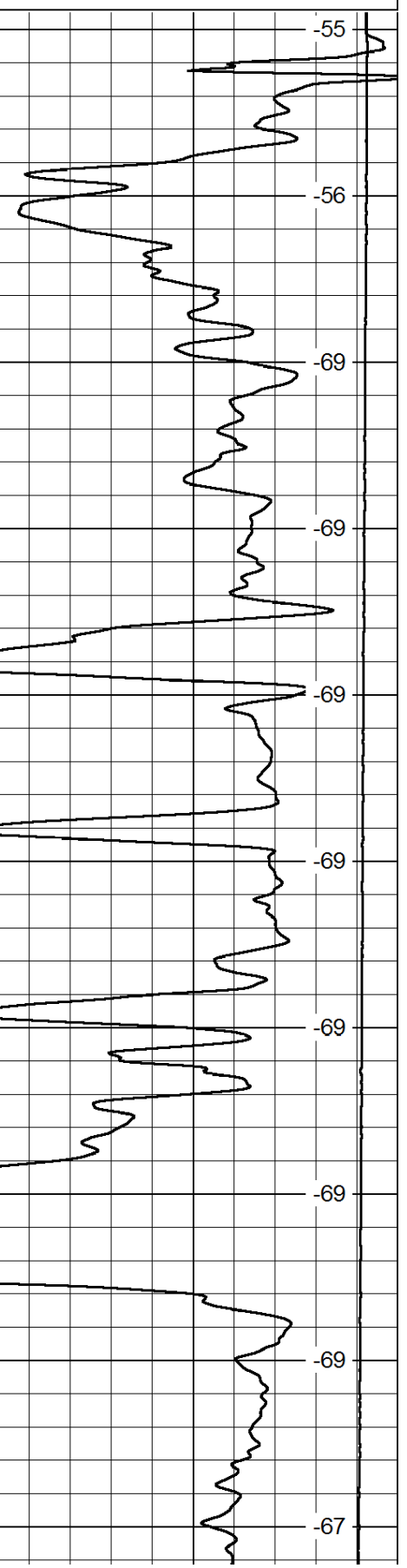
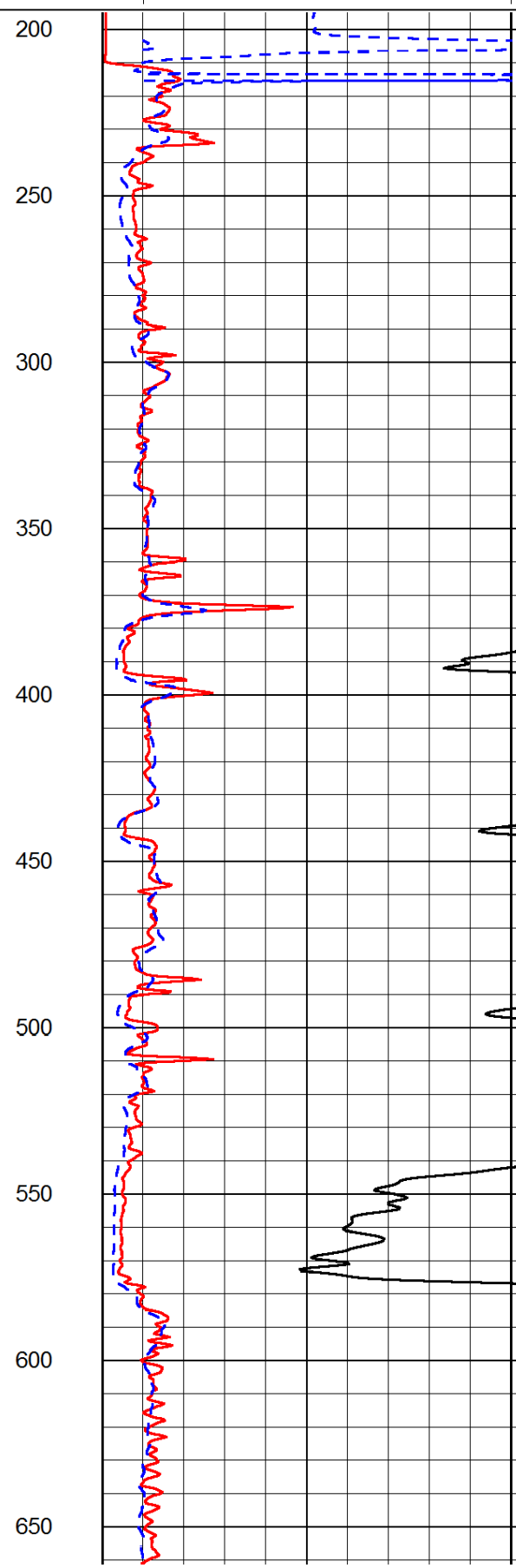
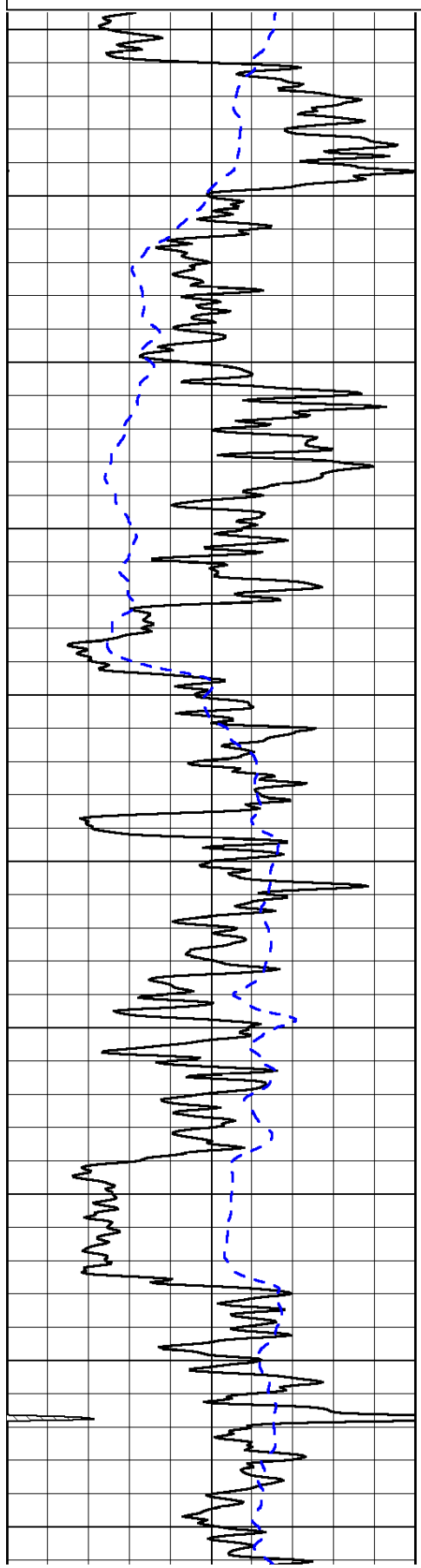
0	Gamma Ray	150
-200	SP (mV)	0

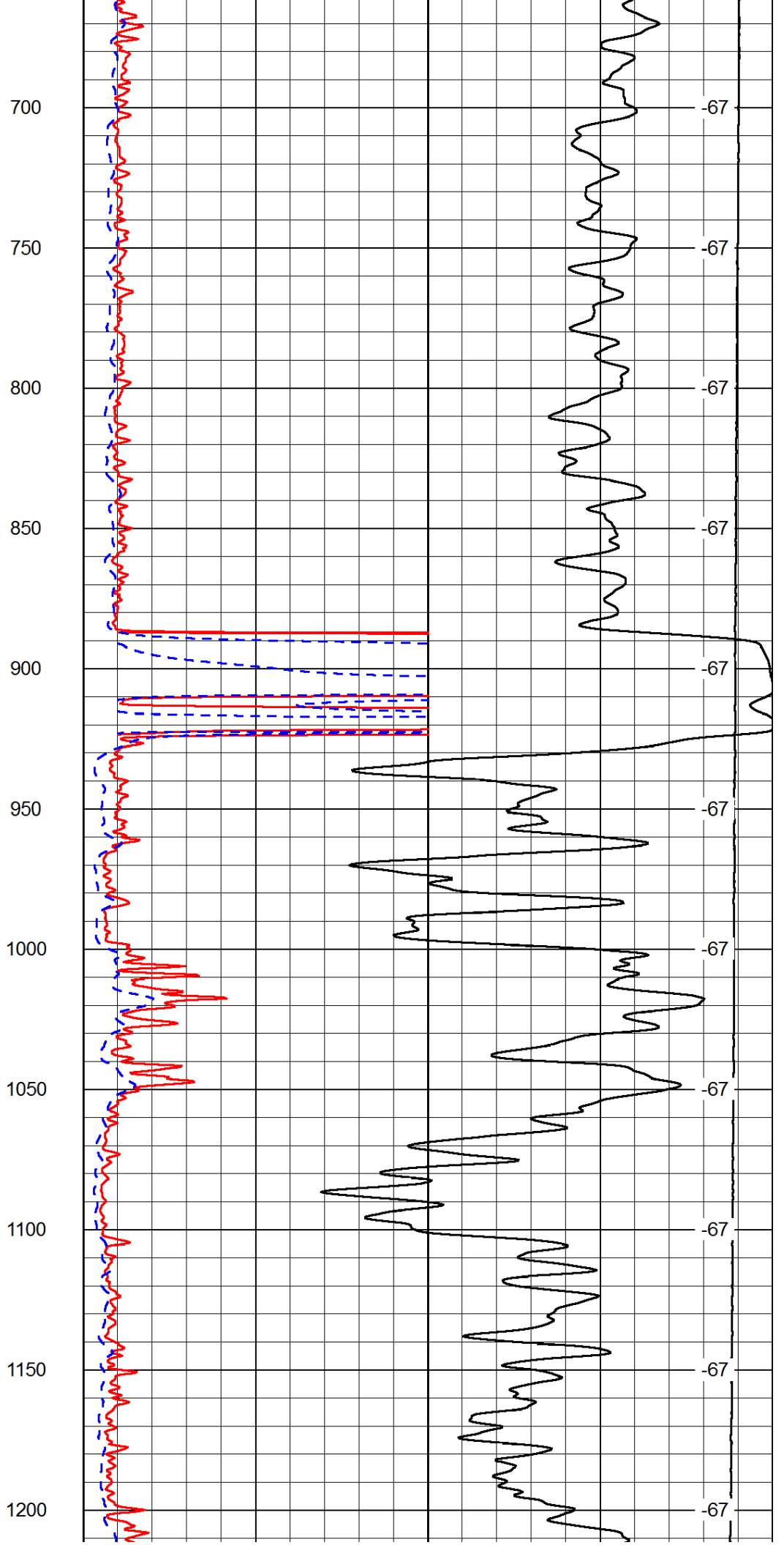
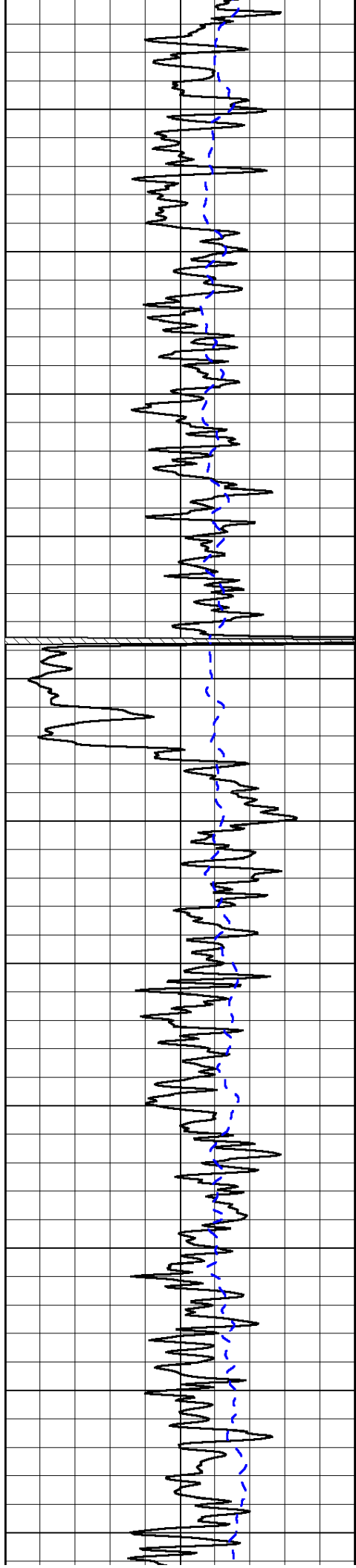
0	Shallow Resistivity	50
0	Deep Resistivity	50

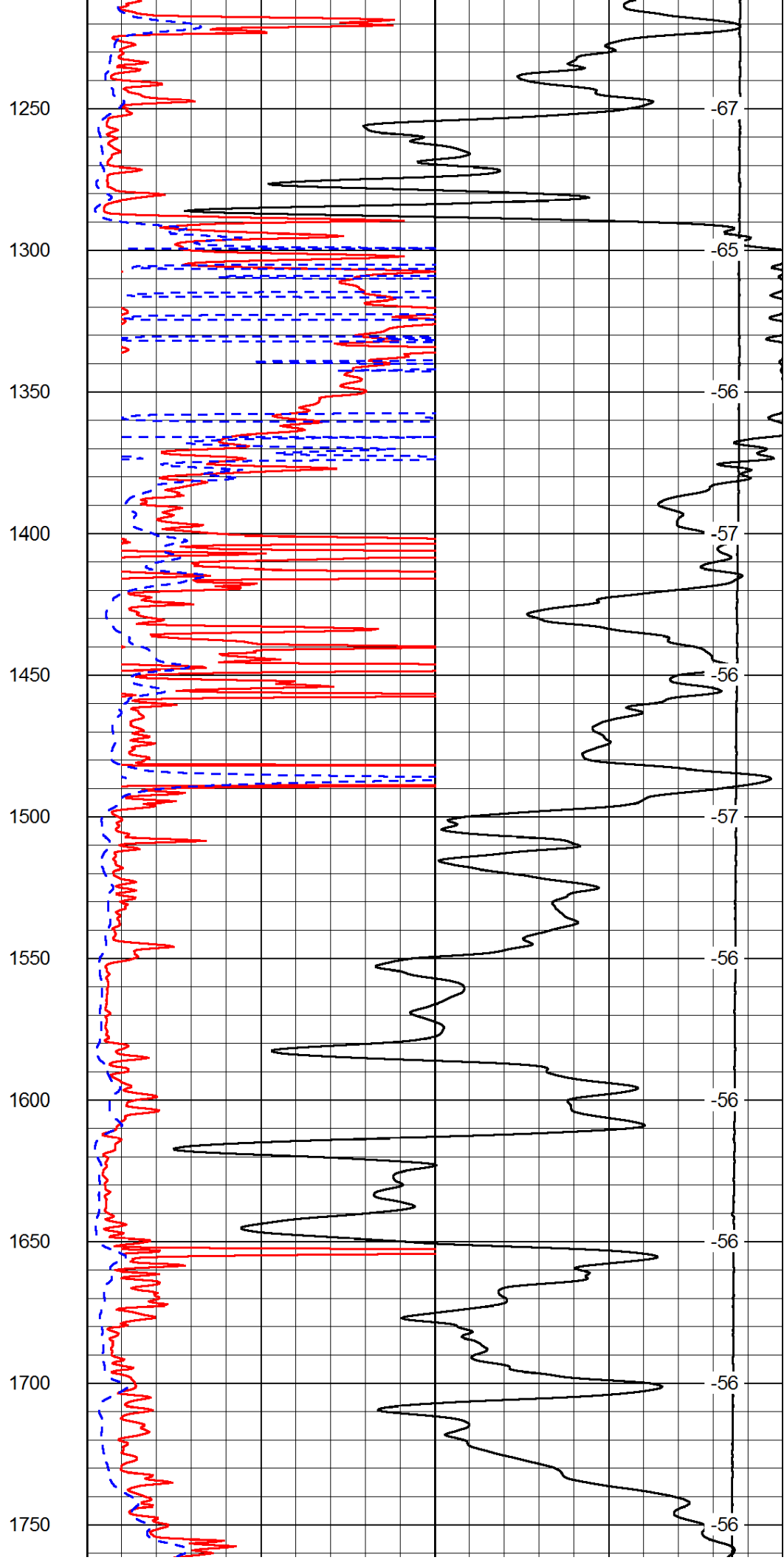
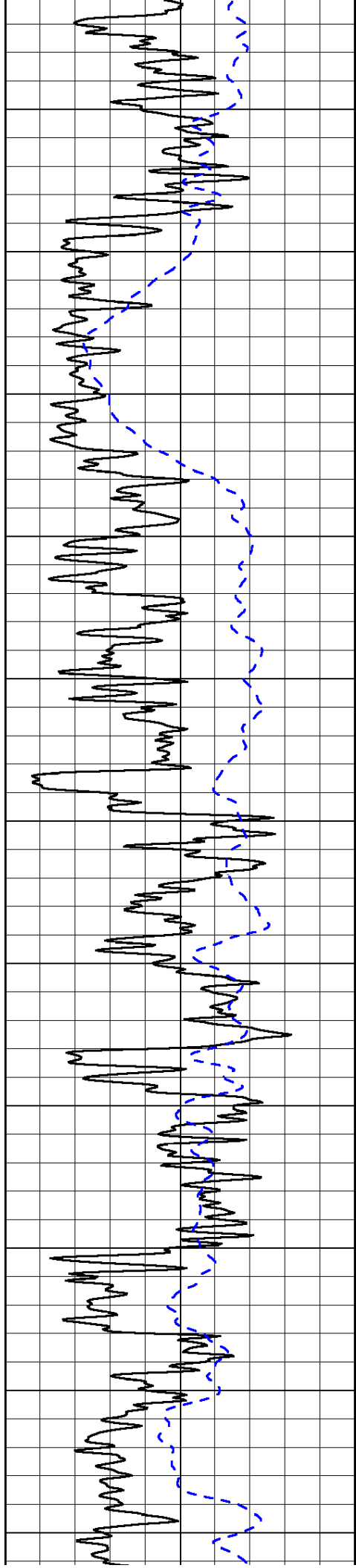
LSPD

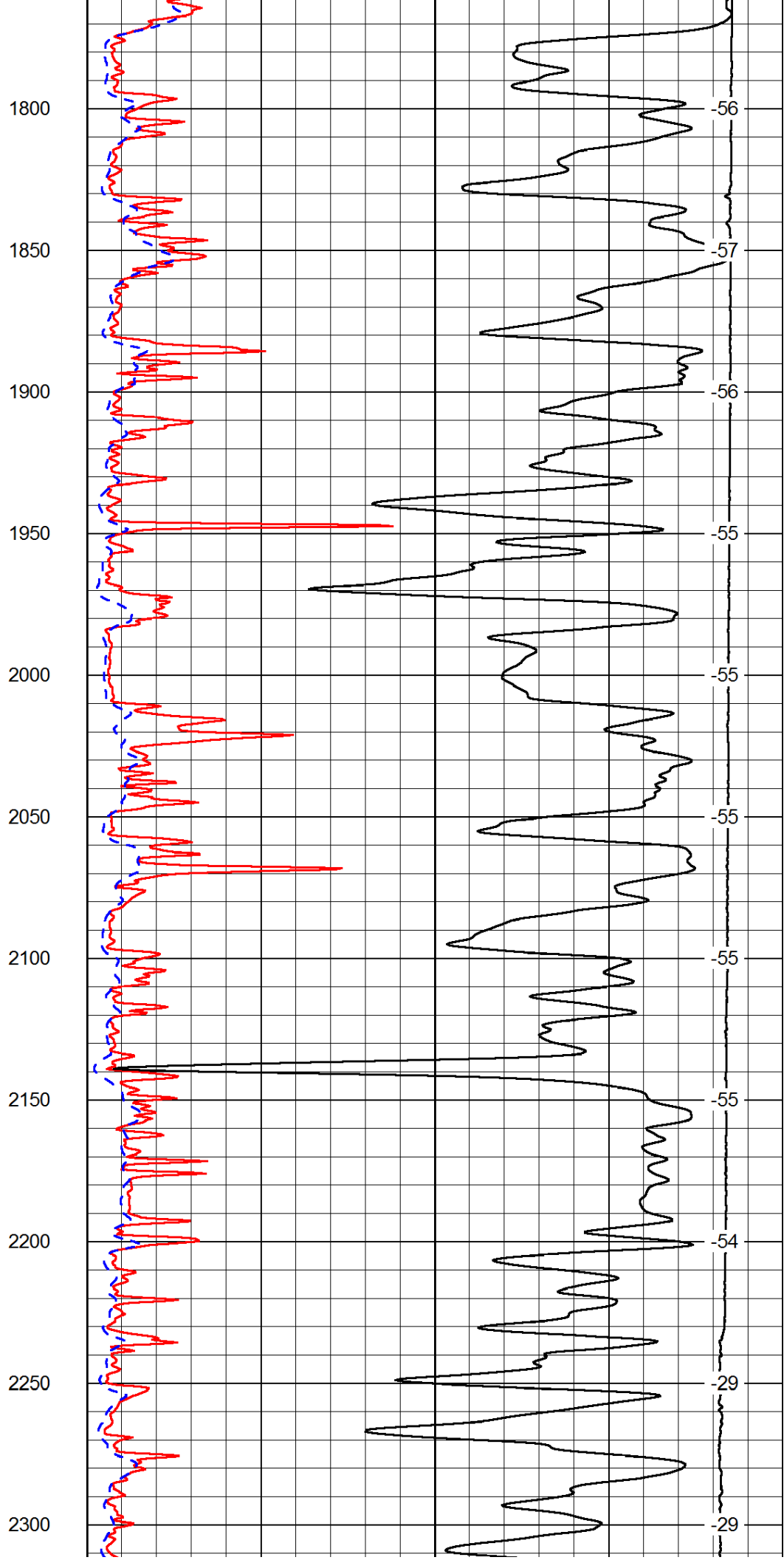
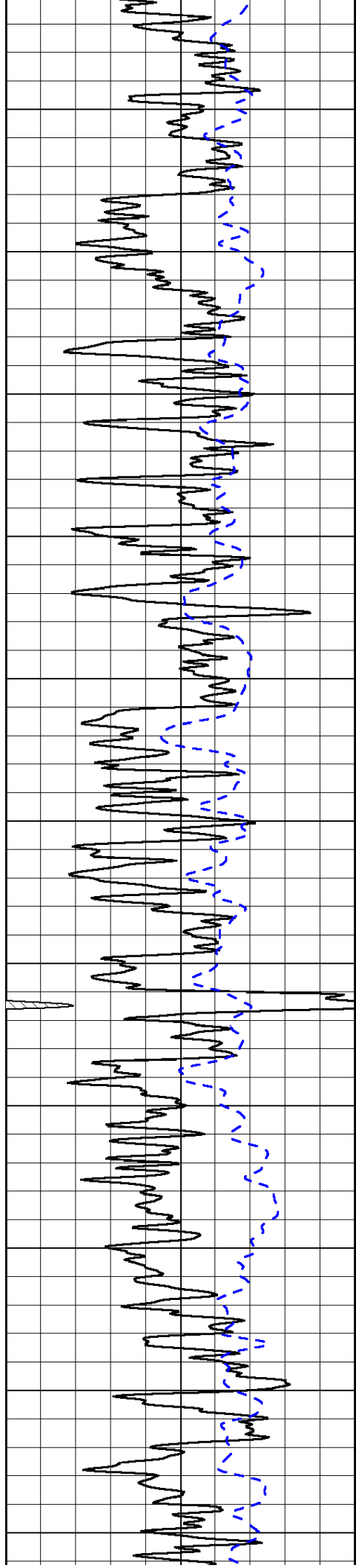
1000	Conductivity	0
15000	Line Tension	0

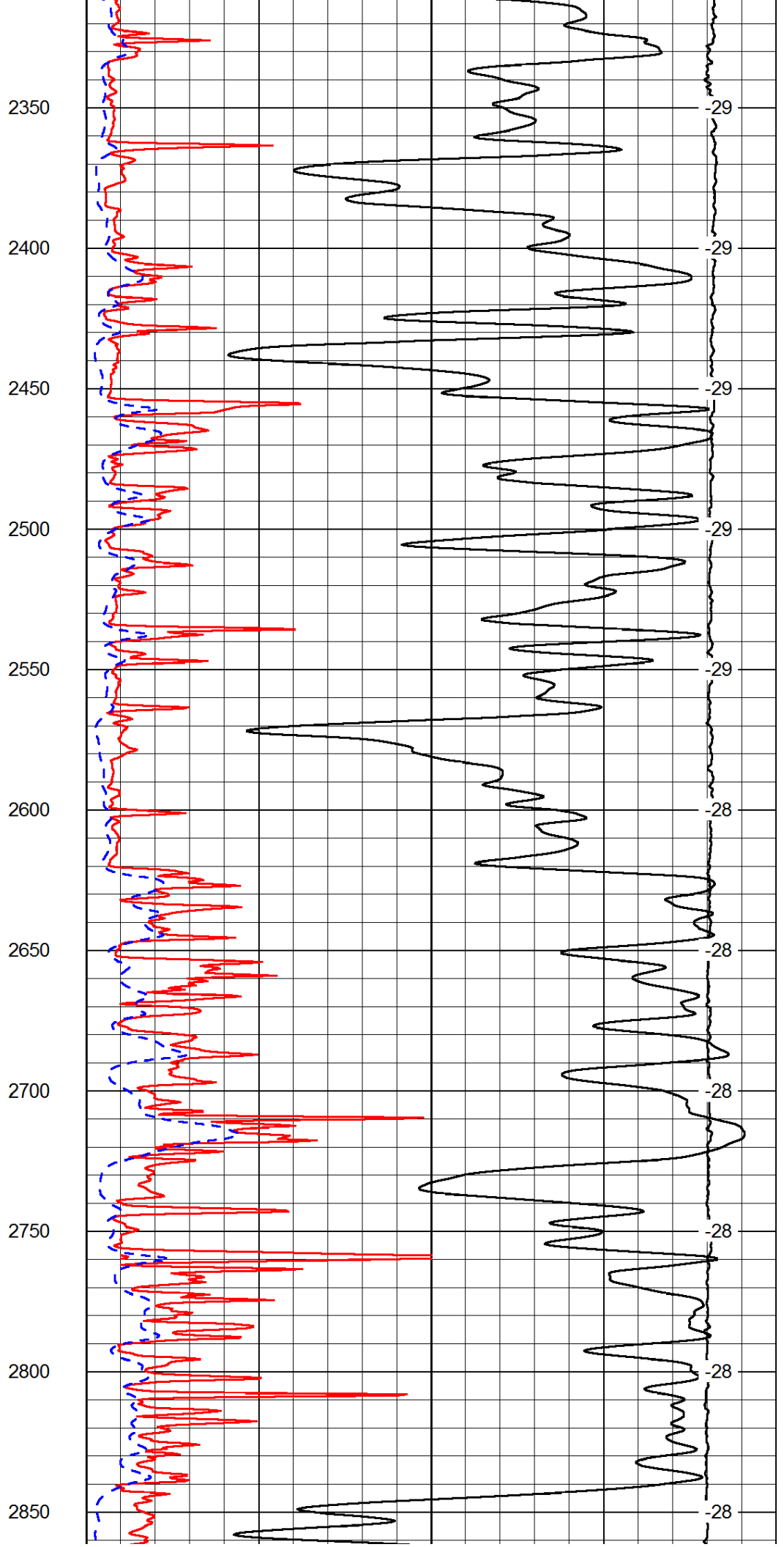
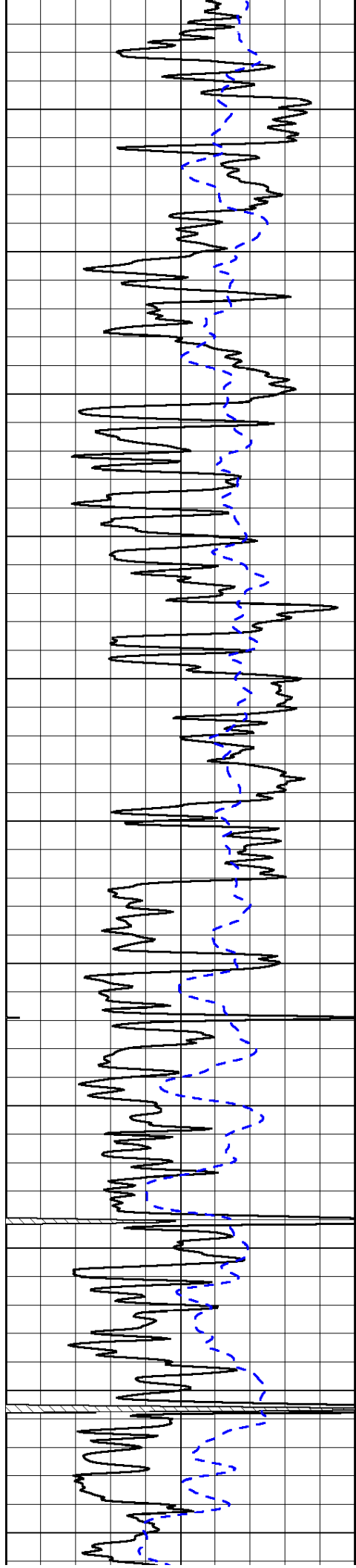
50	Shallow Resistivity	500
50	Deep Resistivity	500

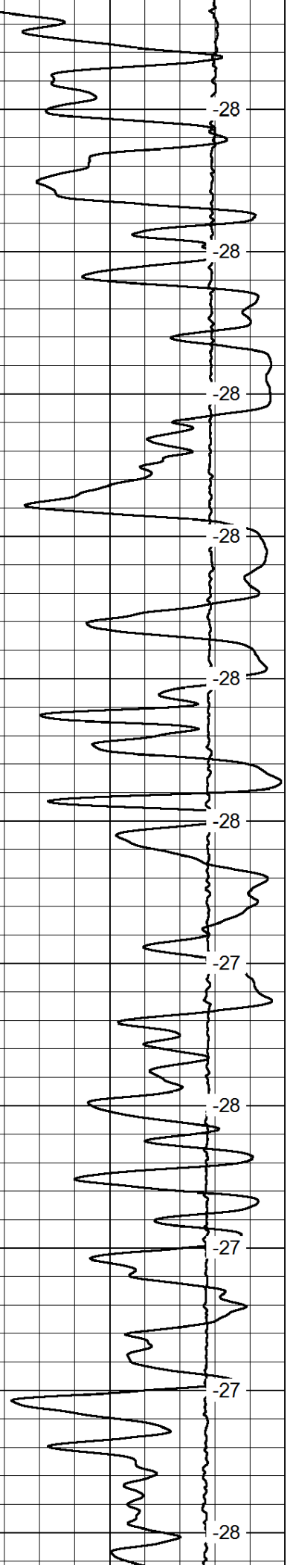
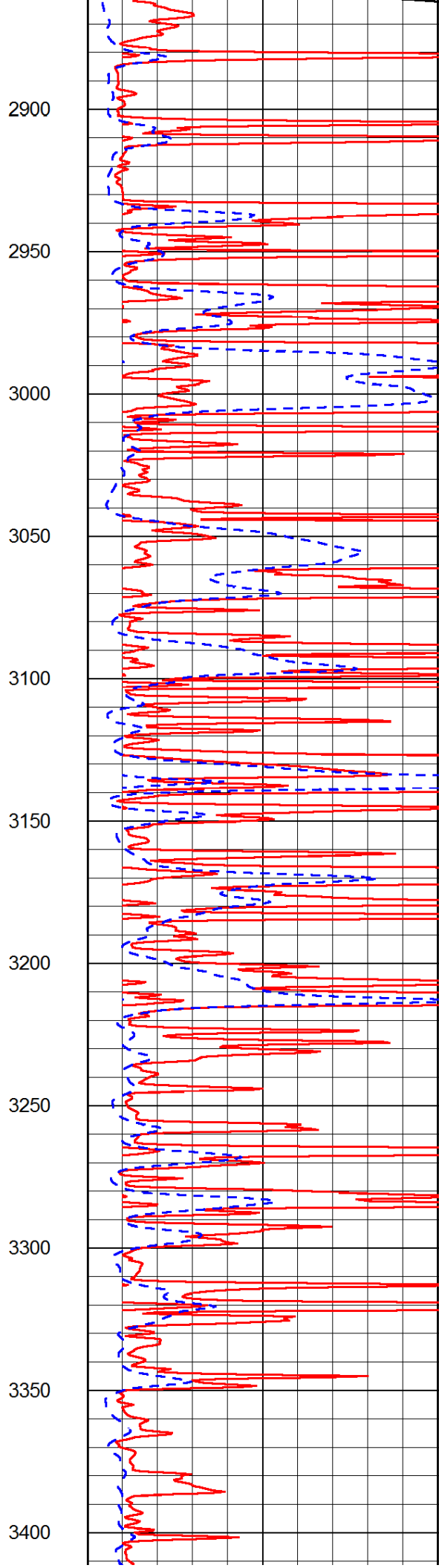
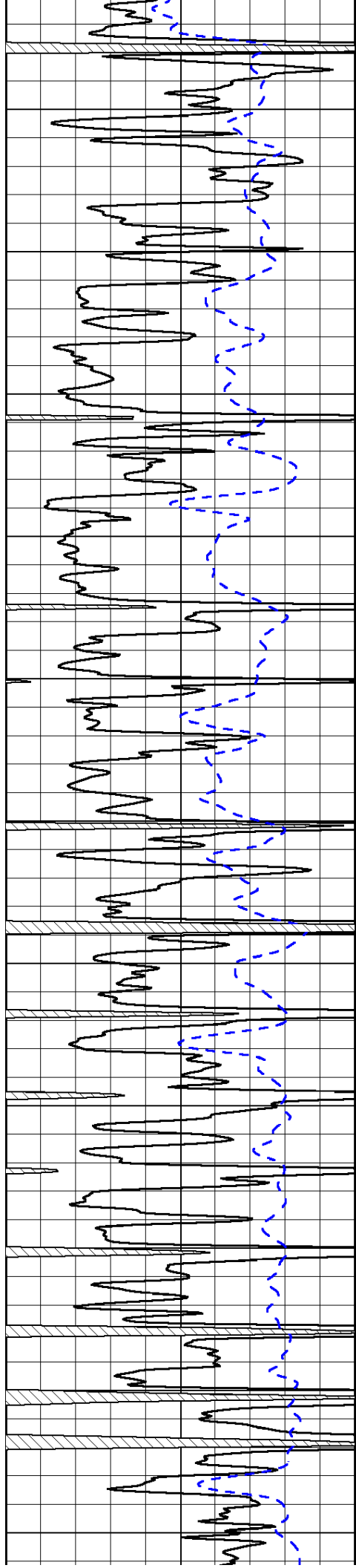


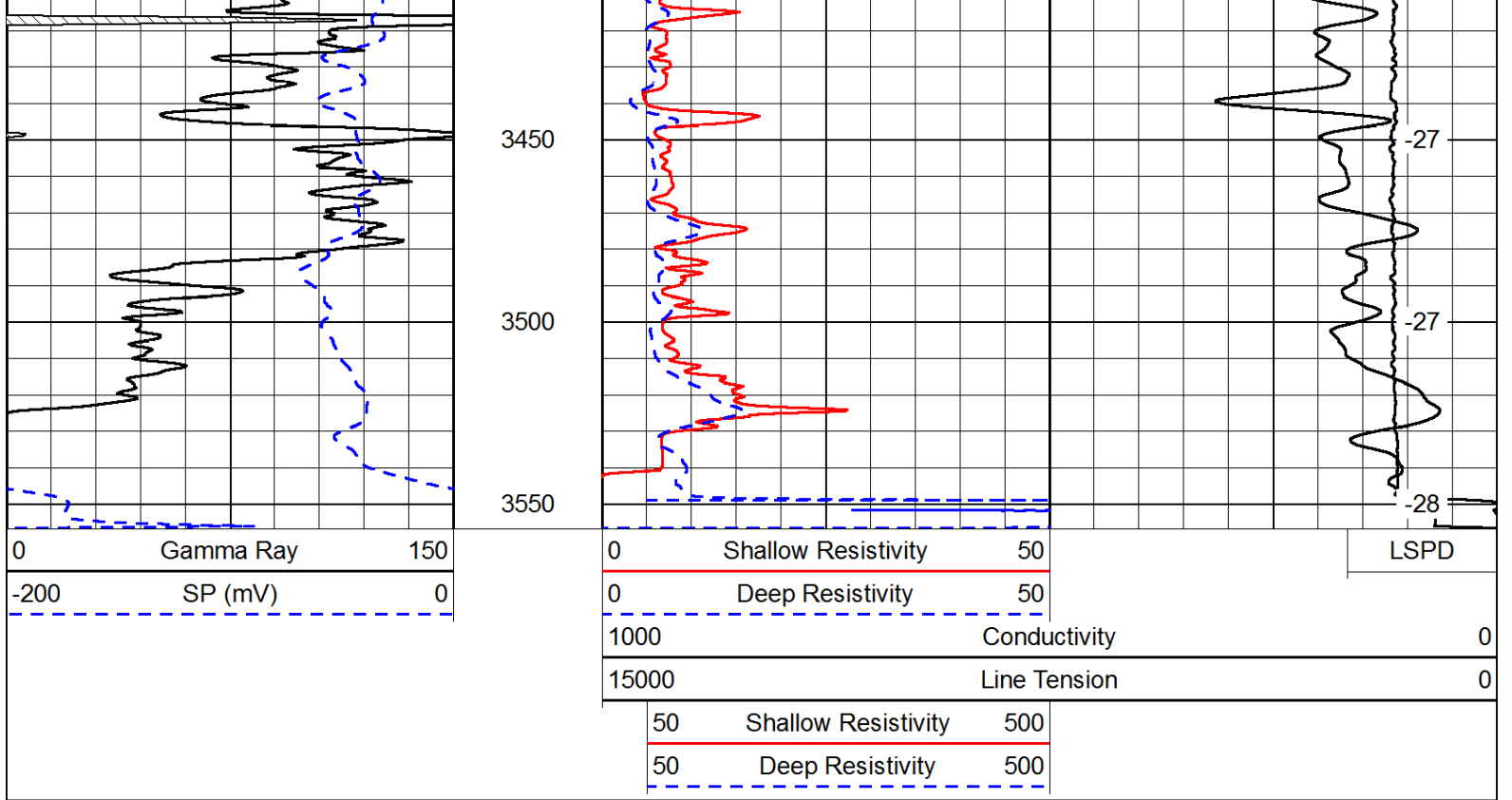




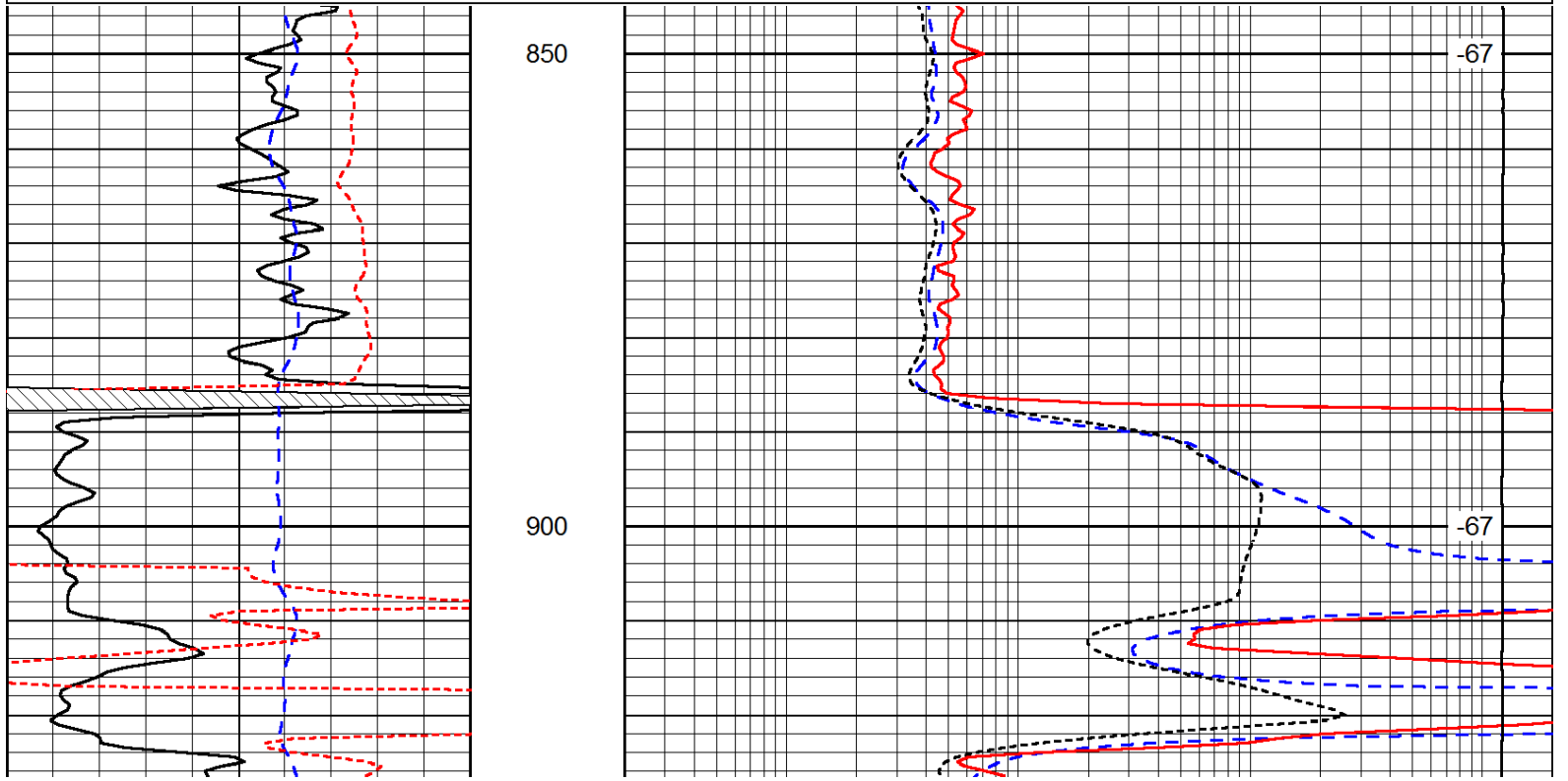
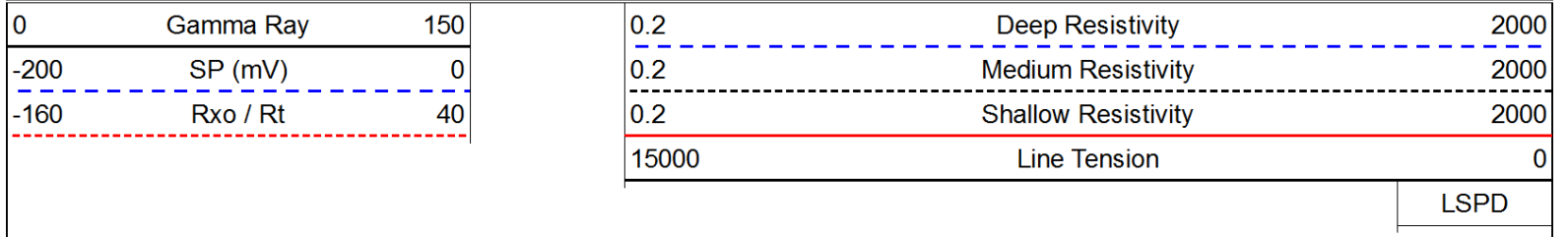


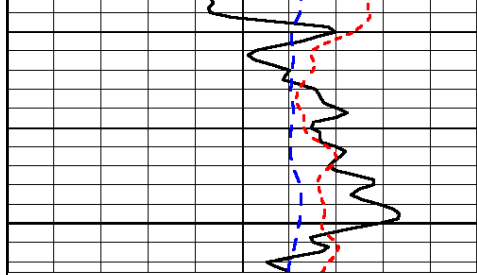






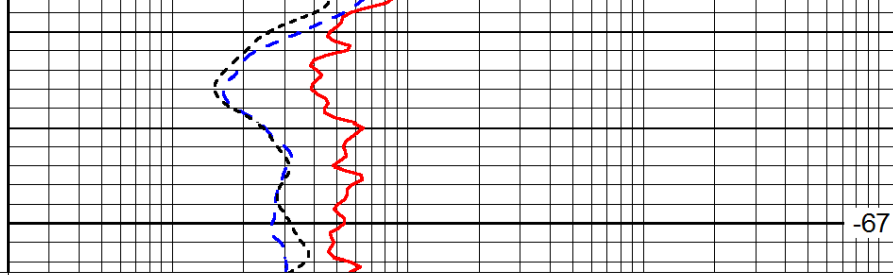
Database File: c:\warrior\data\barline_vohs #1\barlinehd.db
 Dataset Pathname: dil/barstack
 Presentation Format: dil
 Dataset Creation: Mon Jun 18 12:49:48 2012
 Charted by: Depth in Feet scaled 1:240





0	Gamma Ray	150
-200	SP (mV)	0
-160	Rxo / Rt	40

950



0.2	Deep Resistivity	2000
0.2	Medium Resistivity	2000
0.2	Shallow Resistivity	2000
15000	Line Tension	0

-67

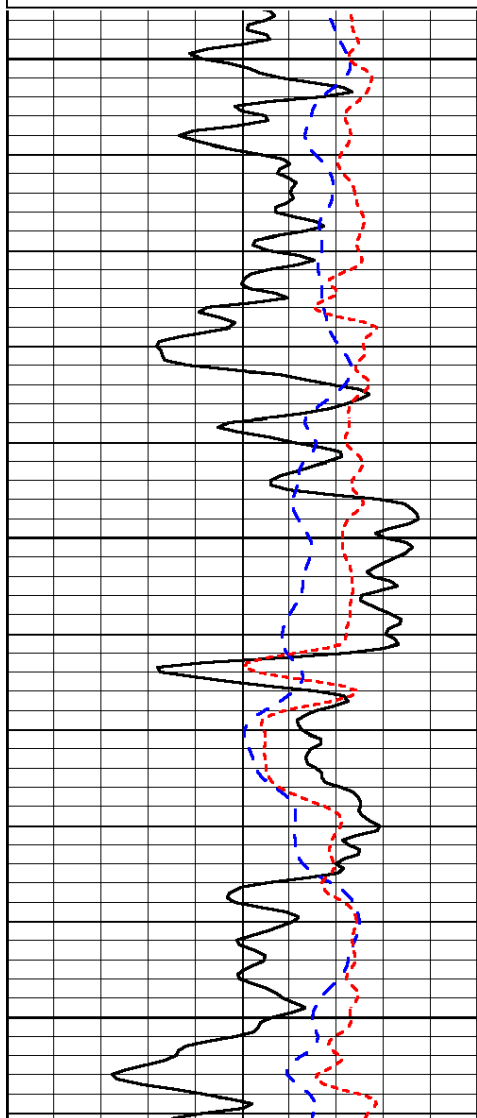
LSPD

Database File: c:\warrior\data\barline_vohs #1\barlinehd.db
 Dataset Pathname: dil/barstack
 Presentation Format: dil
 Dataset Creation: Mon Jun 18 12:49:48 2012
 Charted by: Depth in Feet scaled 1:240

0	Gamma Ray	150
-200	SP (mV)	0
-160	Rxo / Rt	40

0.2	Deep Resistivity	2000
0.2	Medium Resistivity	2000
0.2	Shallow Resistivity	2000
15000	Line Tension	0

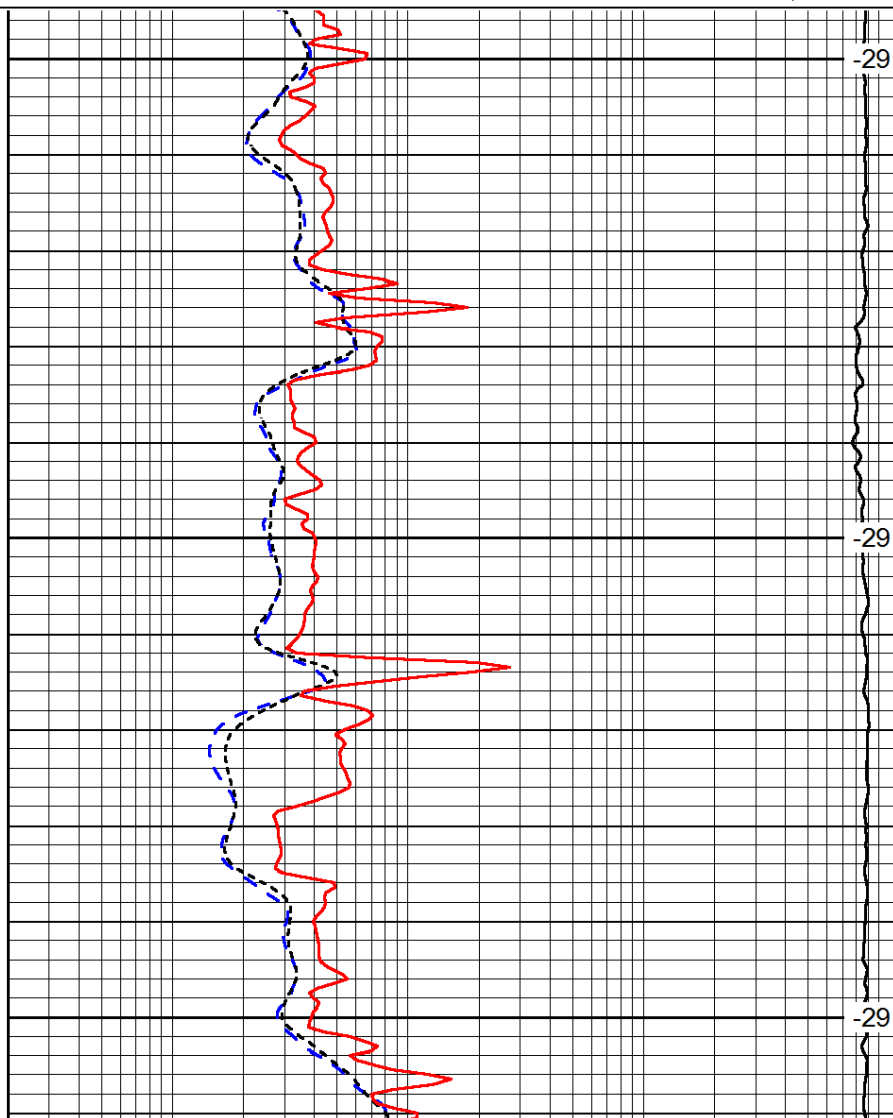
LSPD



2300

2350

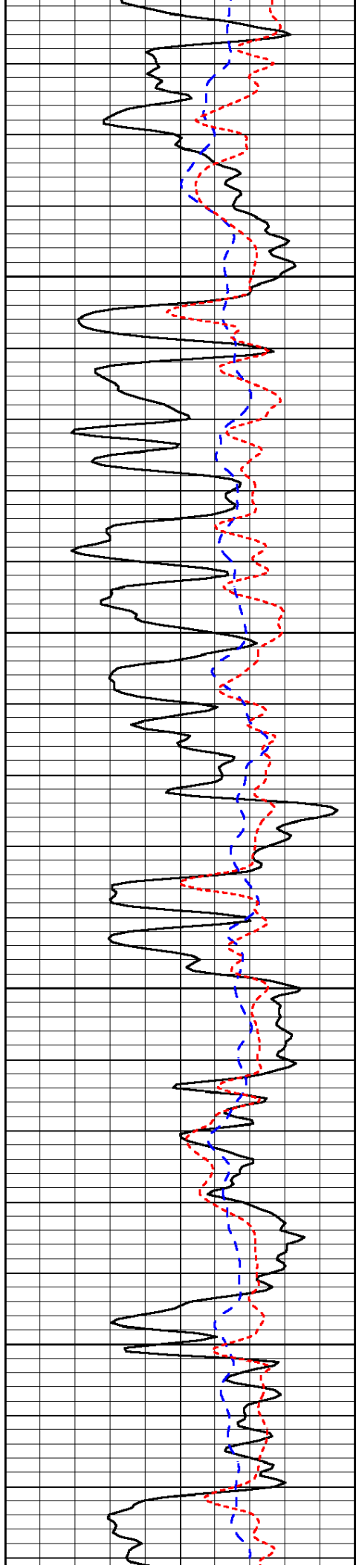
2400



-29

-29

-29

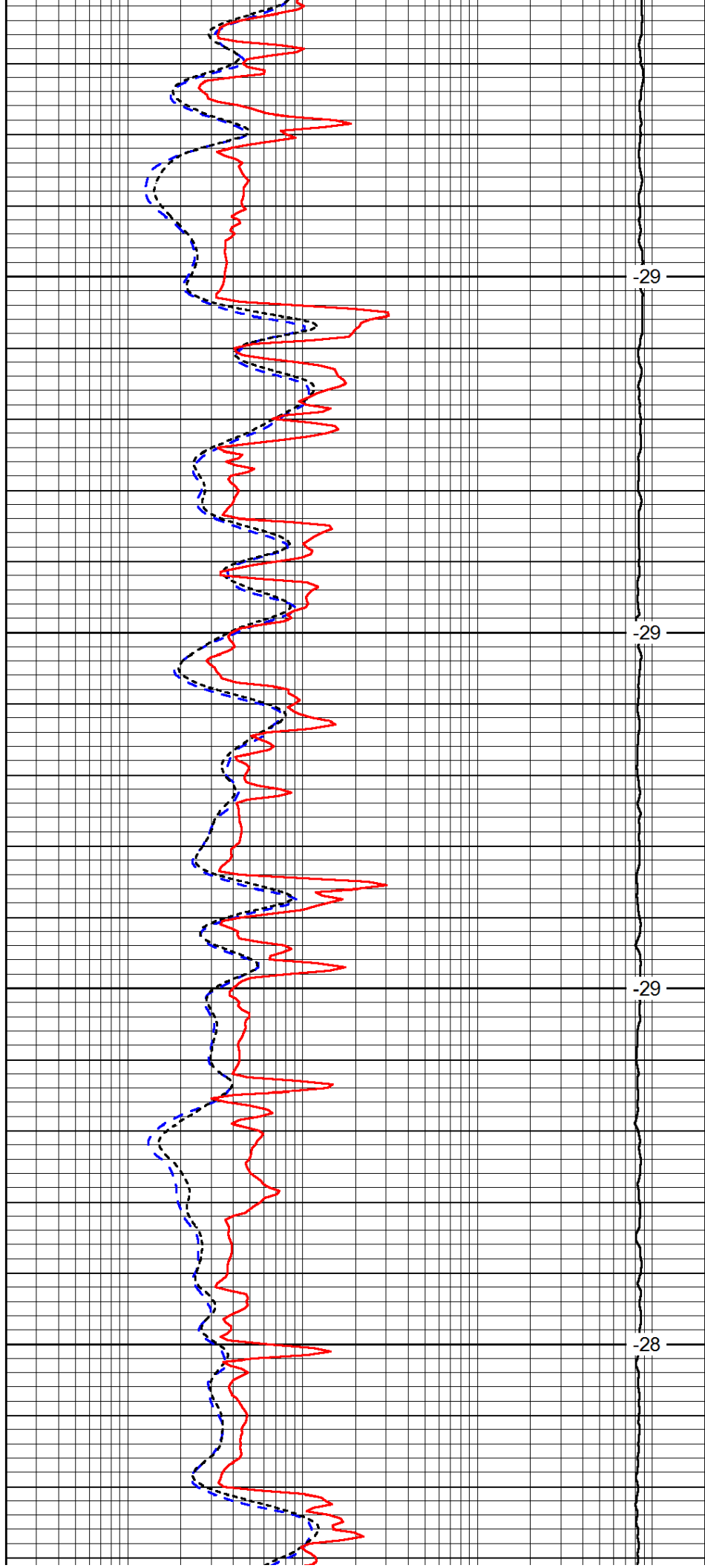


2450

2500

2550

2600

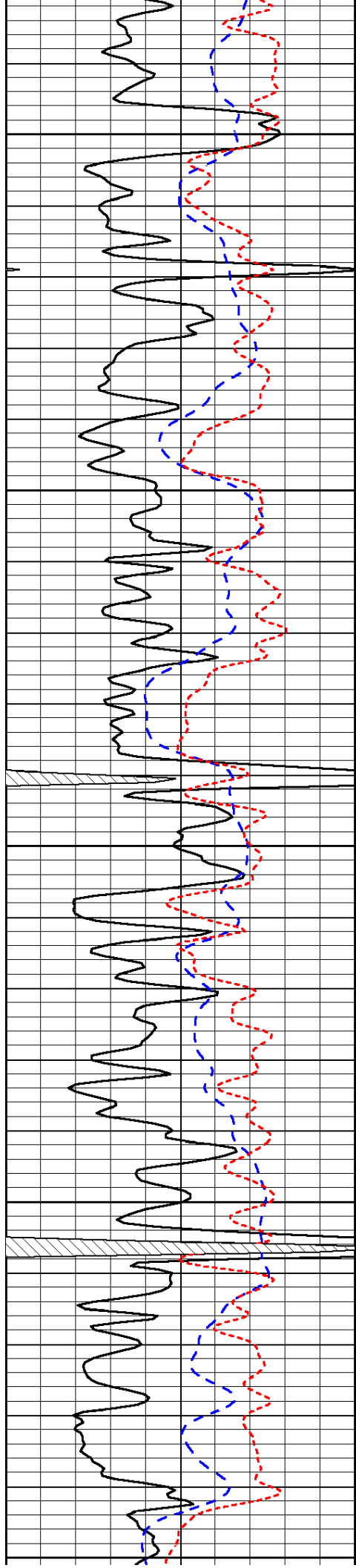


-29

-29

-29

-28



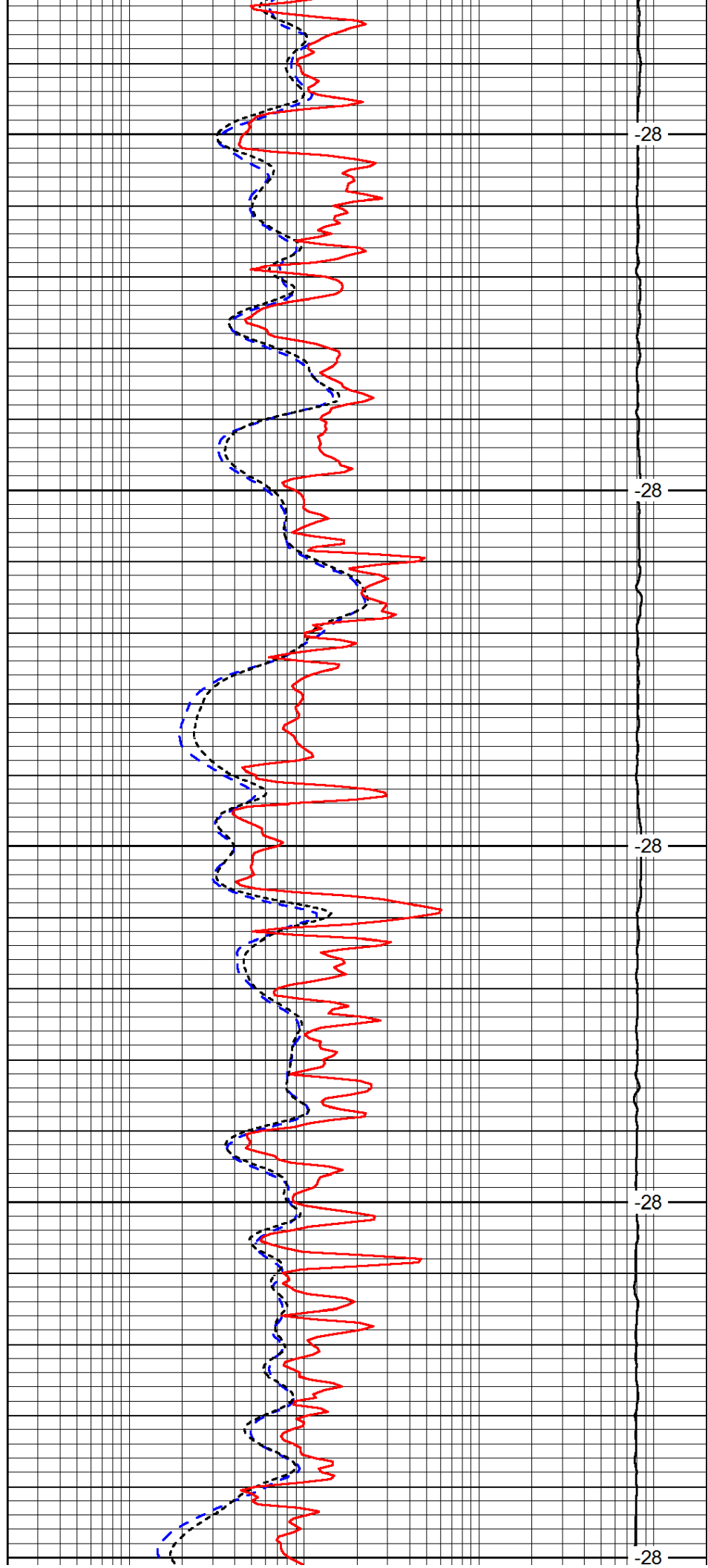
2650

2700

2750

2800

2850



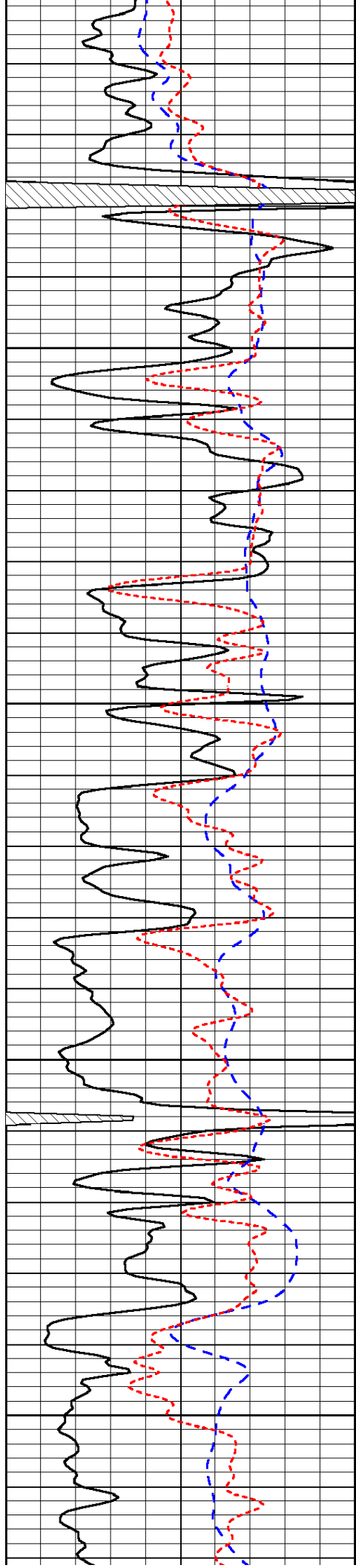
-28

-28

-28

-28

-28

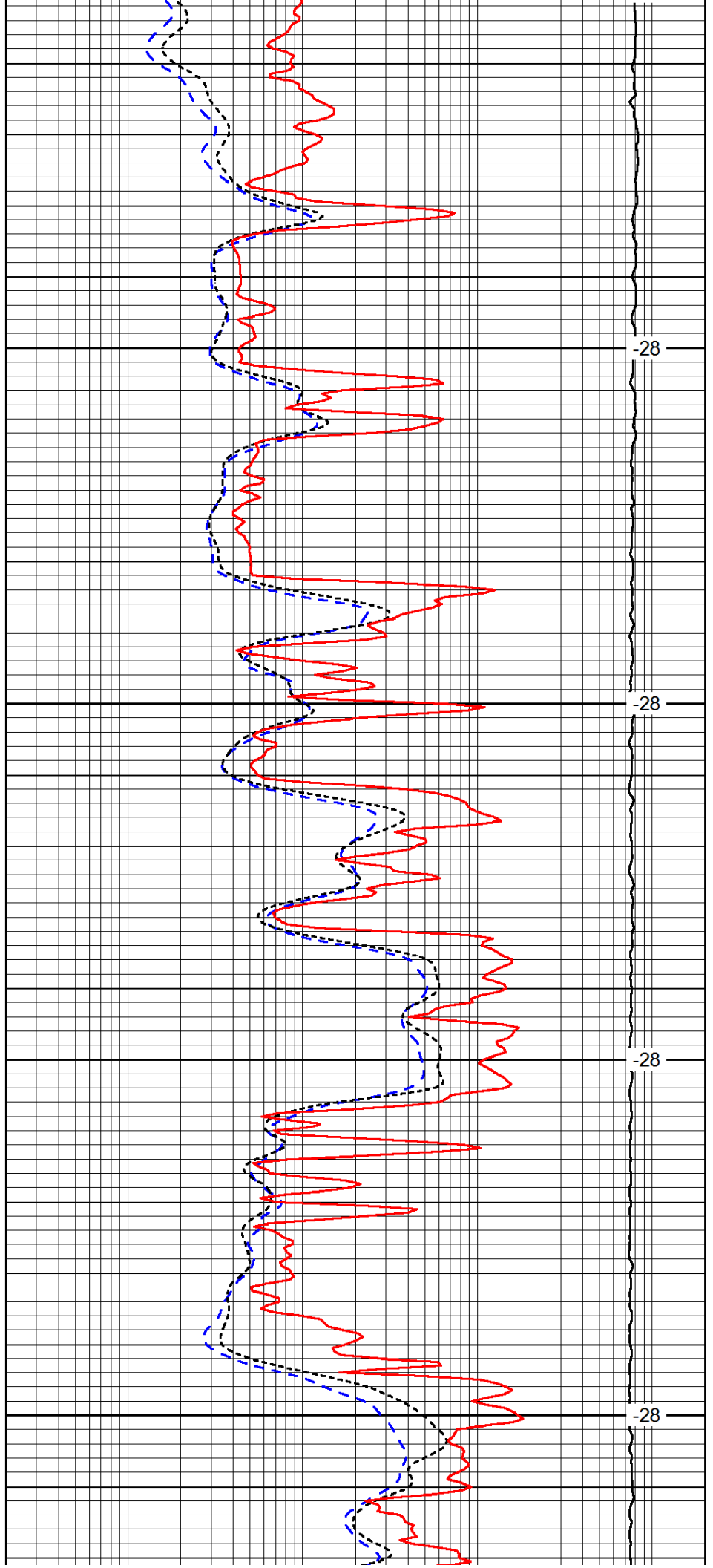


2900

2950

3000

3050

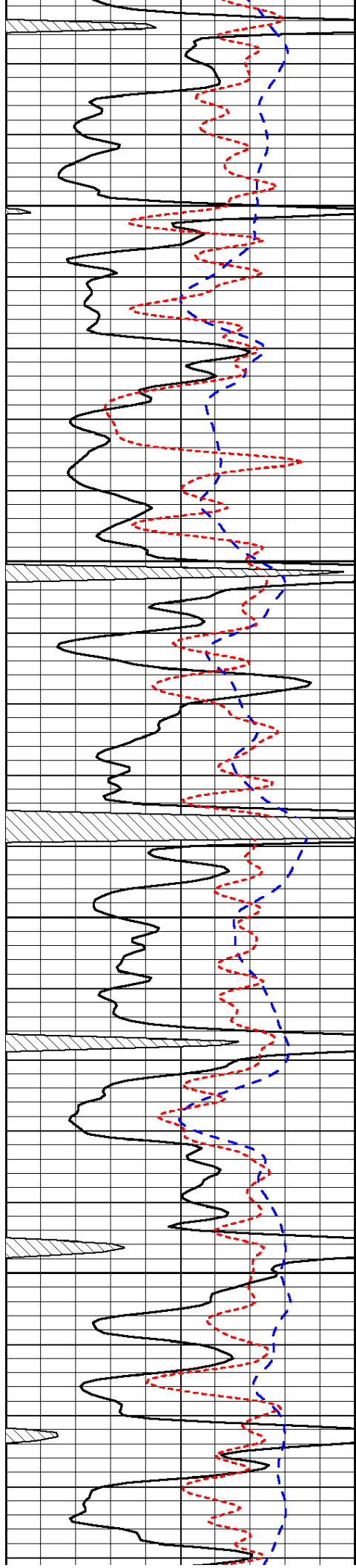


-28

-28

-28

-28

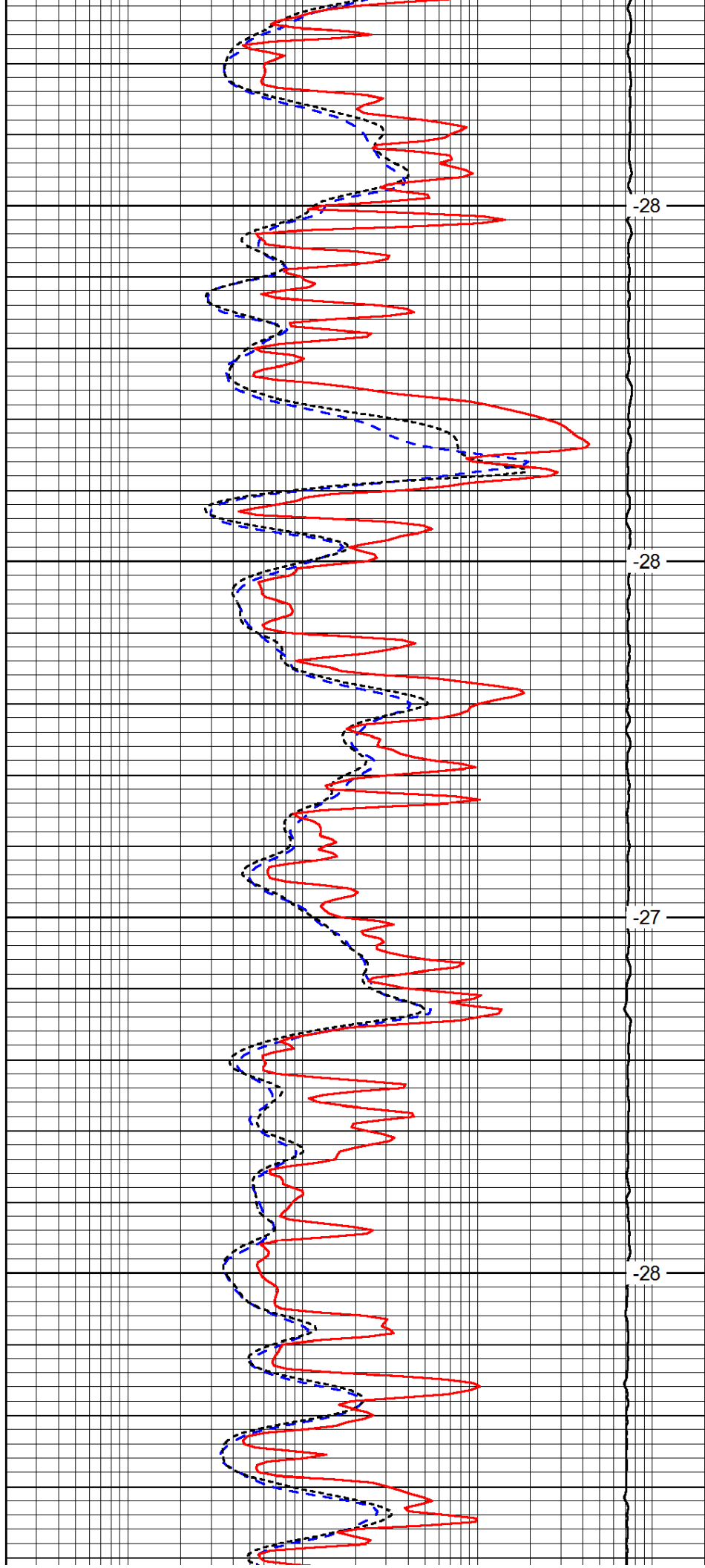


3100

3150

3200

3250

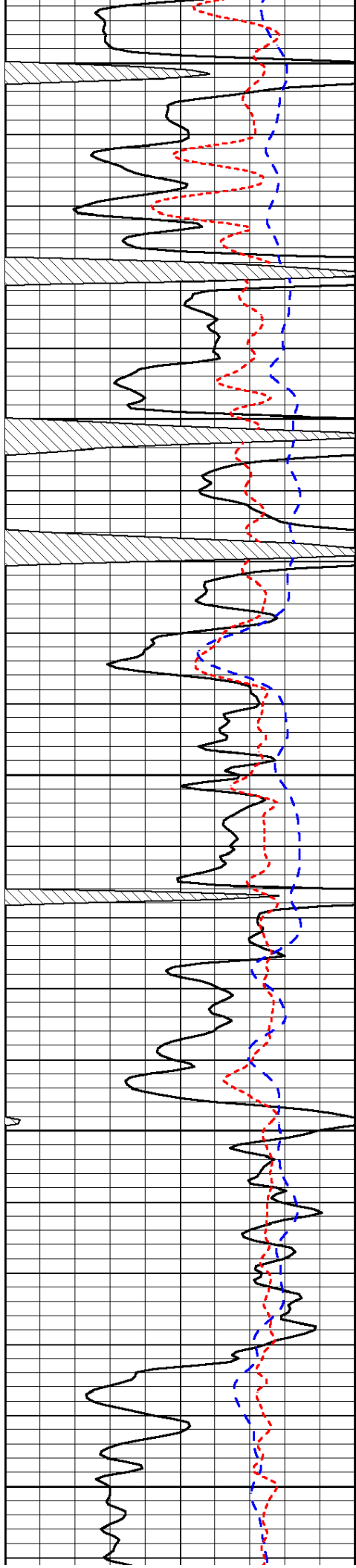


-28

-28

-27

-28



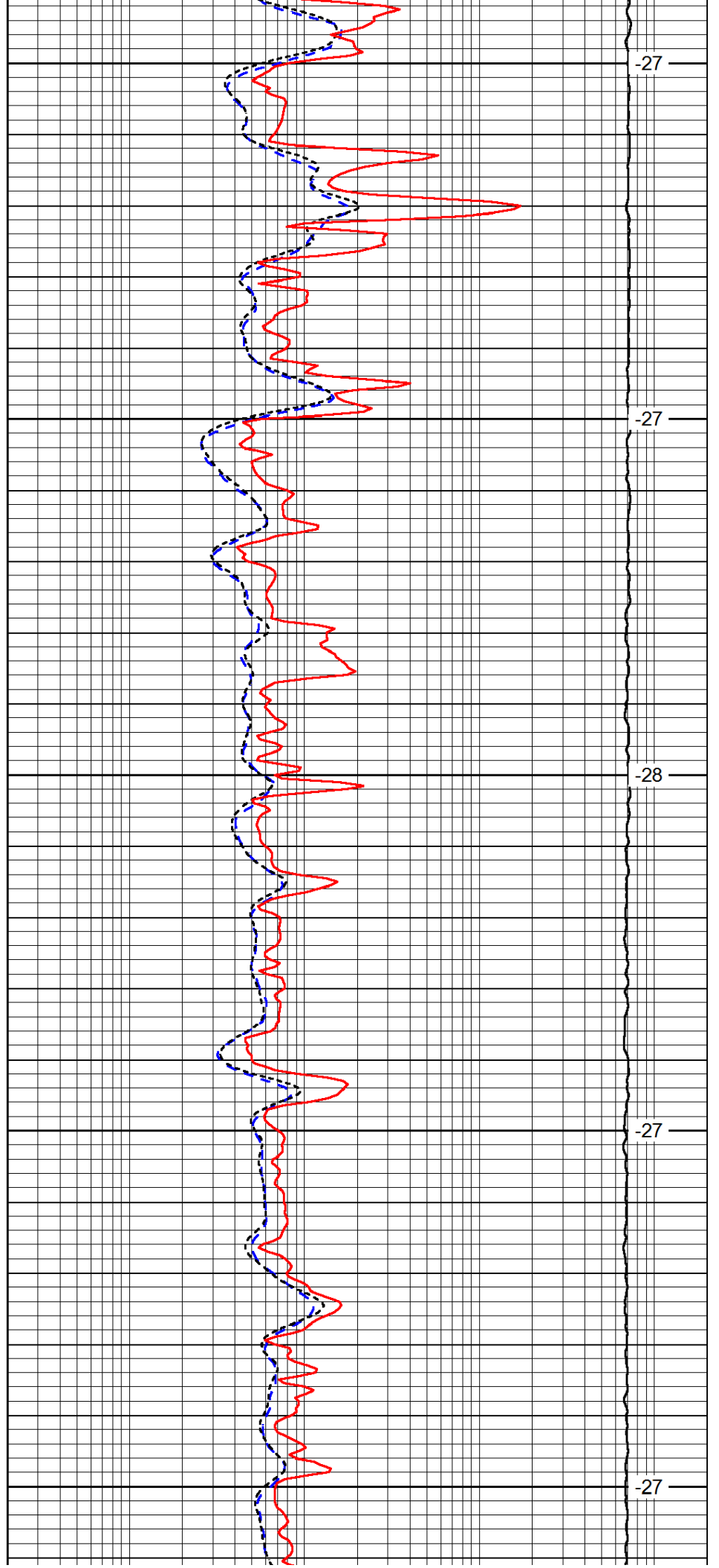
3300

3350

3400

3450

3500



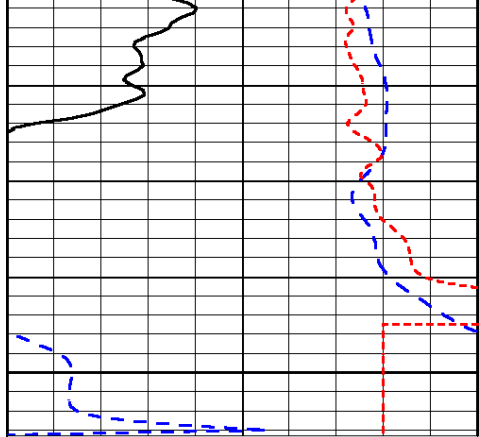
-27

-27

-28

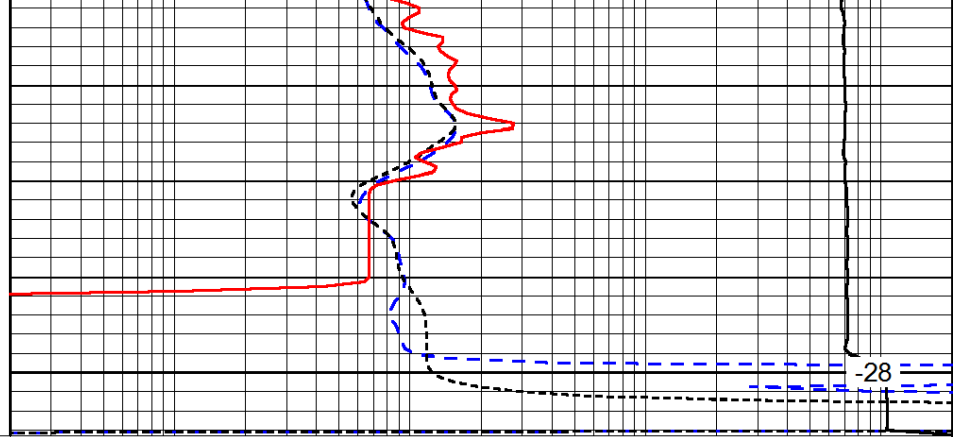
-27

-27



0	Gamma Ray	150
-200	SP (mV)	0
-160	Rxo / Rt	40

3550



0.2	Deep Resistivity	2000
0.2	Medium Resistivity	2000
0.2	Shallow Resistivity	2000
15000	Line Tension	0

LSPD