



DIGITAL LOG (785) 625-3858

Microresistivity Log

15-141-20,450-00-00

API No.

Company Barline Oil, LLC.

Well Vohs #1

Field Unnamed

County Osborne State

Kansas

Location 330' FNL & 2310' FWL

Other Services  
CNL/CDL  
DIL

Sec: 34 Twp: 8 S Rge: 13 W

Permanent Datum Ground Level Elevation 1682

Log Measured From Kelly Bushing 8 Ft. Above Perm. Datum

Drilling Measured From Kelly Bushing

Elevation

K.B. 1690

D.F. 1682

G.L. 1682

Date 6/17/2012

Run Number Two

Depth Driller 3550

Depth Logger 3548

Bottom Logged Interval 3547

Top Log Interval 2300

Casing Driller 8.625 @ 210

Casing Logger 210

Bit Size 7.875

Type Fluid in Hole Chemical

Salinity,ppm CL 4,000

Density / Viscosity 9.3 61

pH / Fluid Loss 10.0 9.4

Source of Sample Flowline

Rm @ Meas. Temp 60 @ 70

Rmf @ Meas. Temp 45 @ 70

Rmc @ Meas. Temp 81 @ 70

Source of Rmf / Rmc Charts

Rm @ BHT .37 @ 114

Operating Rig Time 3 1/2 Hours

Max Rec. Temp. F 114

Equipment Number 91

Location Hays

Recorded By K. Bange

Witnessed By Bill Ree

<<< Fold Here >>>

All interpretations are opinions based on inferences from electrical or other measurements and we cannot and do not guarantee the accuracy or correctness of any interpretation, and we shall not, except in the case of gross or willful negligence on our part, be liable or responsible for any loss, costs, damages, or expenses incurred or sustained by anyone resulting from any interpretation made by any of our officers, agents or employees. These interpretations are also subject to our general terms and conditions set out in our current Price Schedule.

Comments

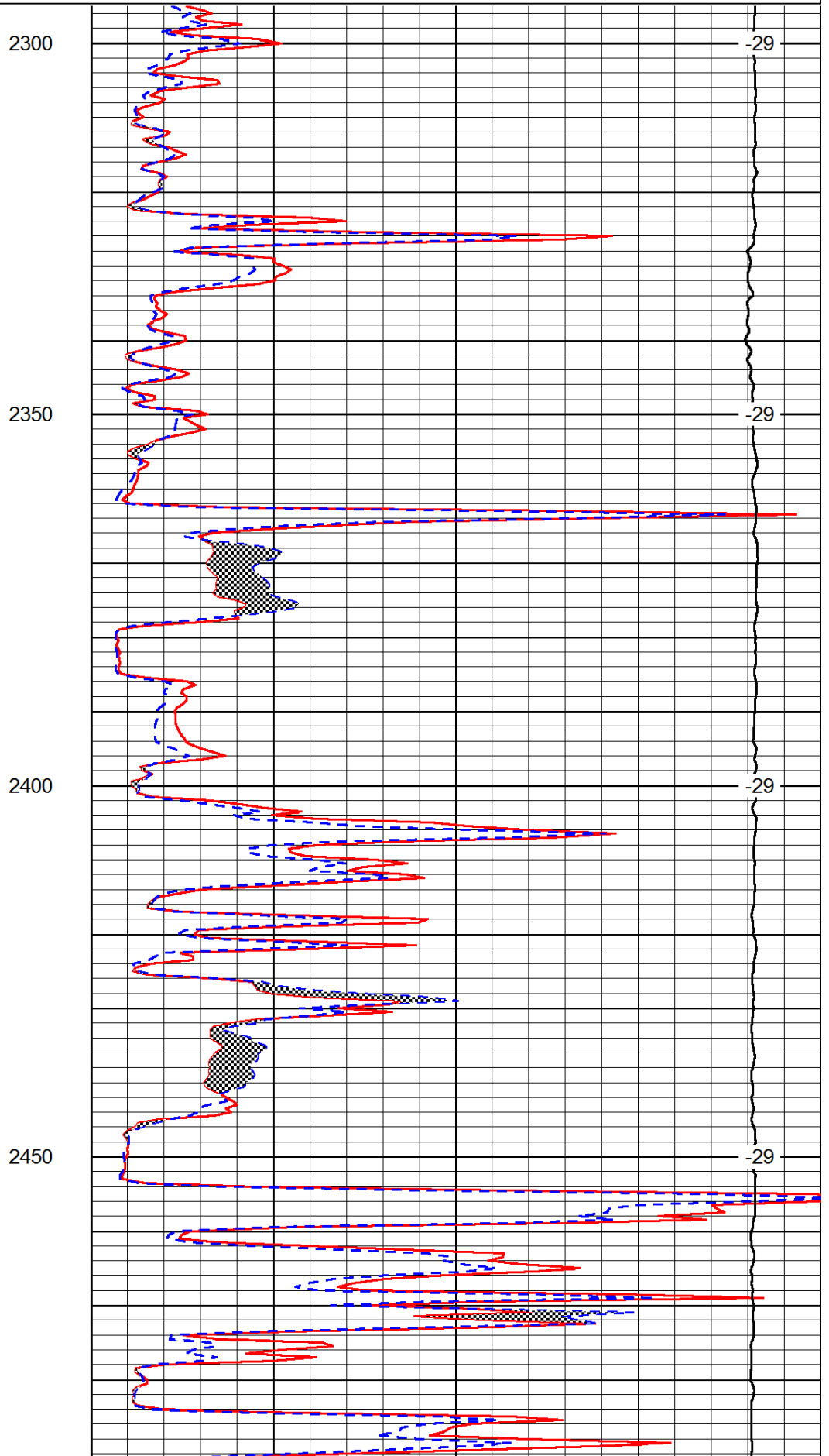
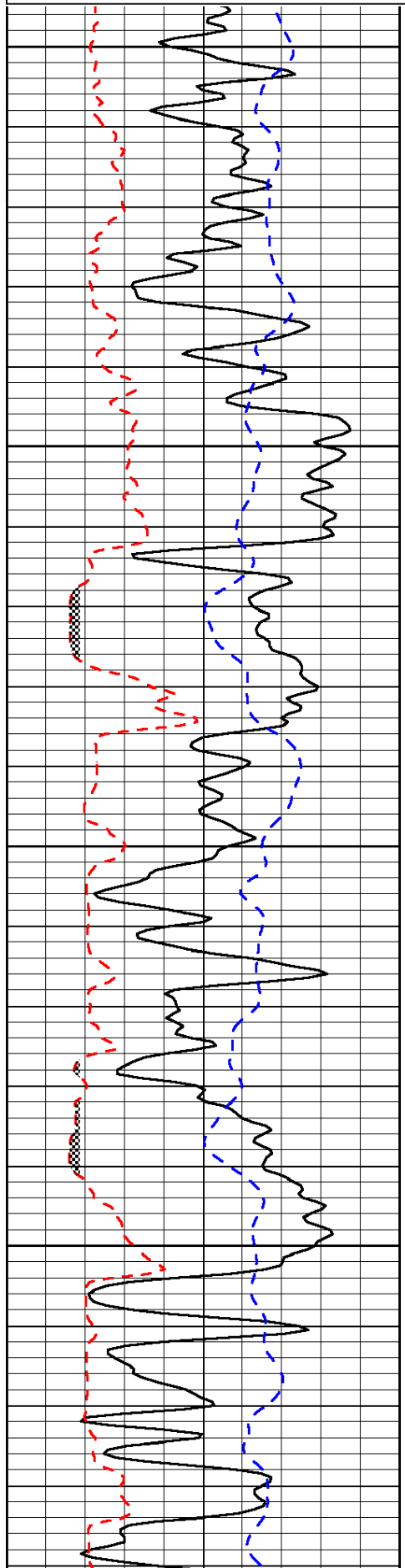
Thank you for using Log-Tech, Inc.  
(785) 625-3858  
Osborne, 5 S to 150 rd,  
6 W and S to 170 rd,  
(follow curves),  
1/2 S, E into

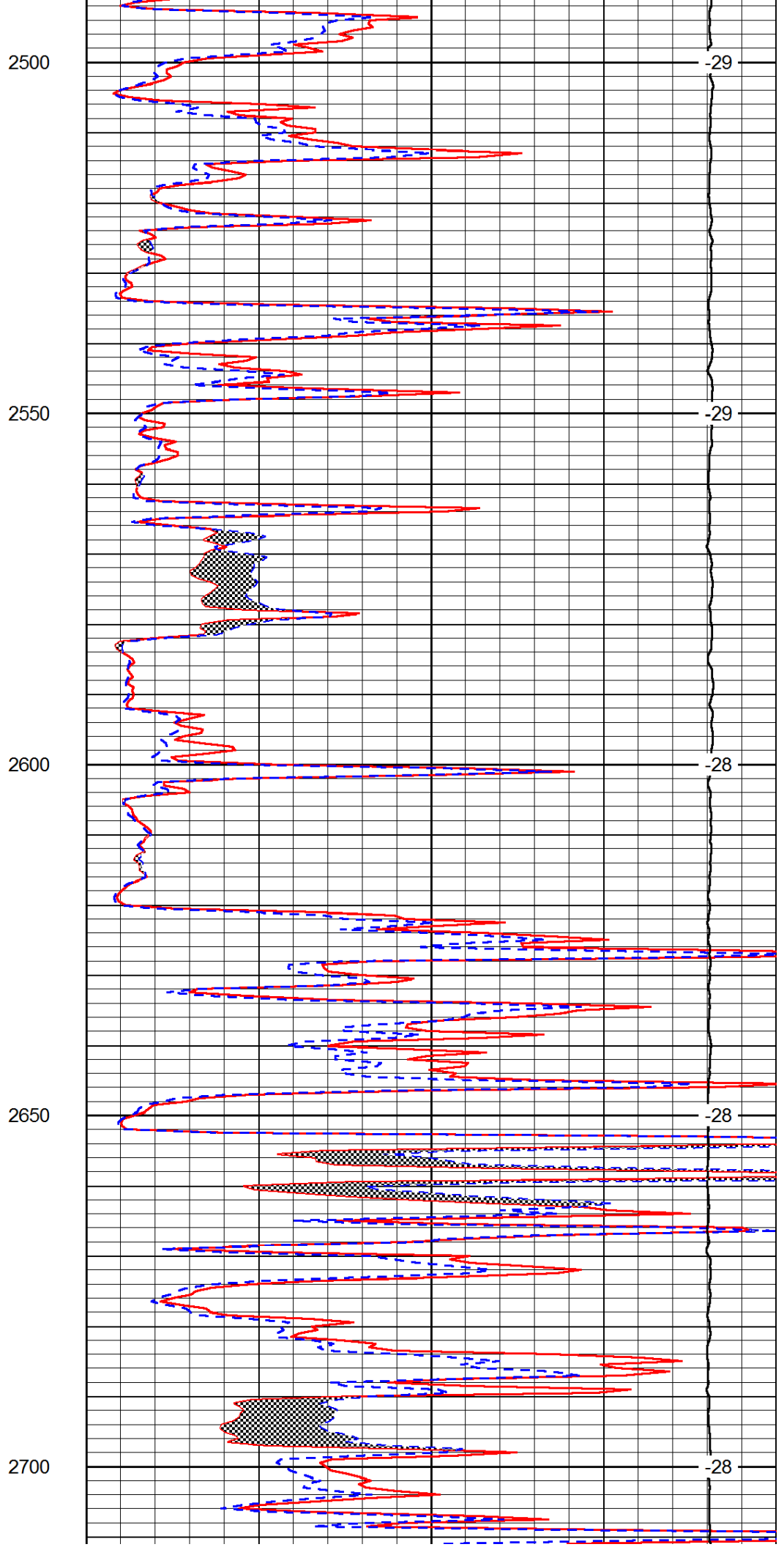
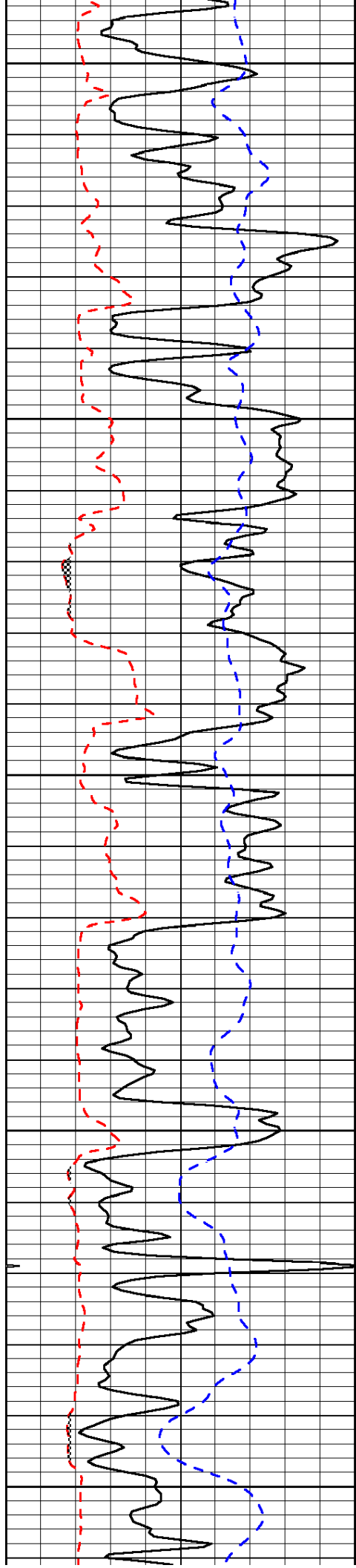
Database File: c:\warrior\data\barline\_vohs #1\barlinehd.db  
Dataset Pathname: dil\barstack  
Presentation Format: micro  
Dataset Creation: Mon Jun 18 12:49:48 2012  
Charted by: Depth in Feet scaled 1:240

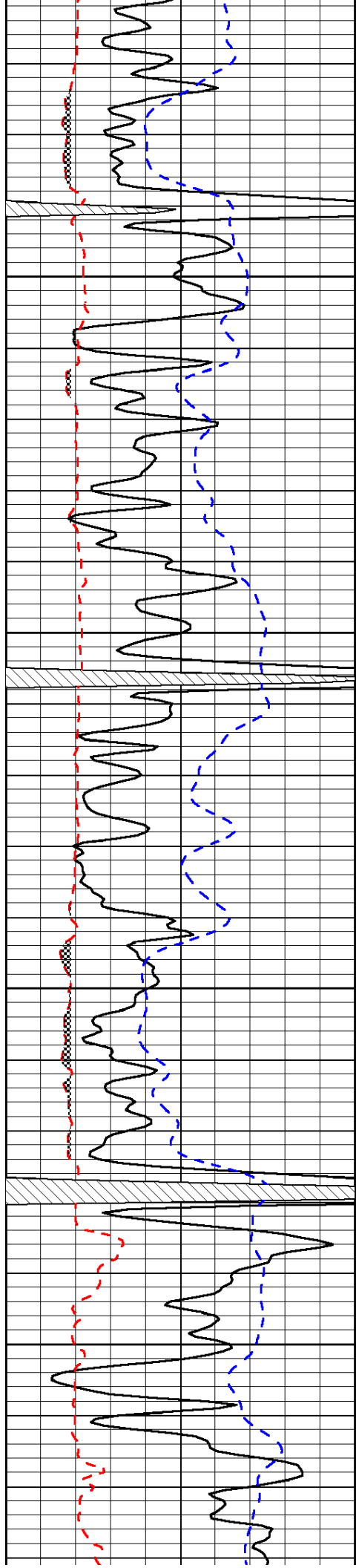
0	Gamma Ray	150
6	Micro Log Caliper (GAPI)	16
-200	SP (mV)	0

0	Micro Inverse 1 X 1	40
0	Micro Normal 2"	40
15000	Line Weight	0

LSPD





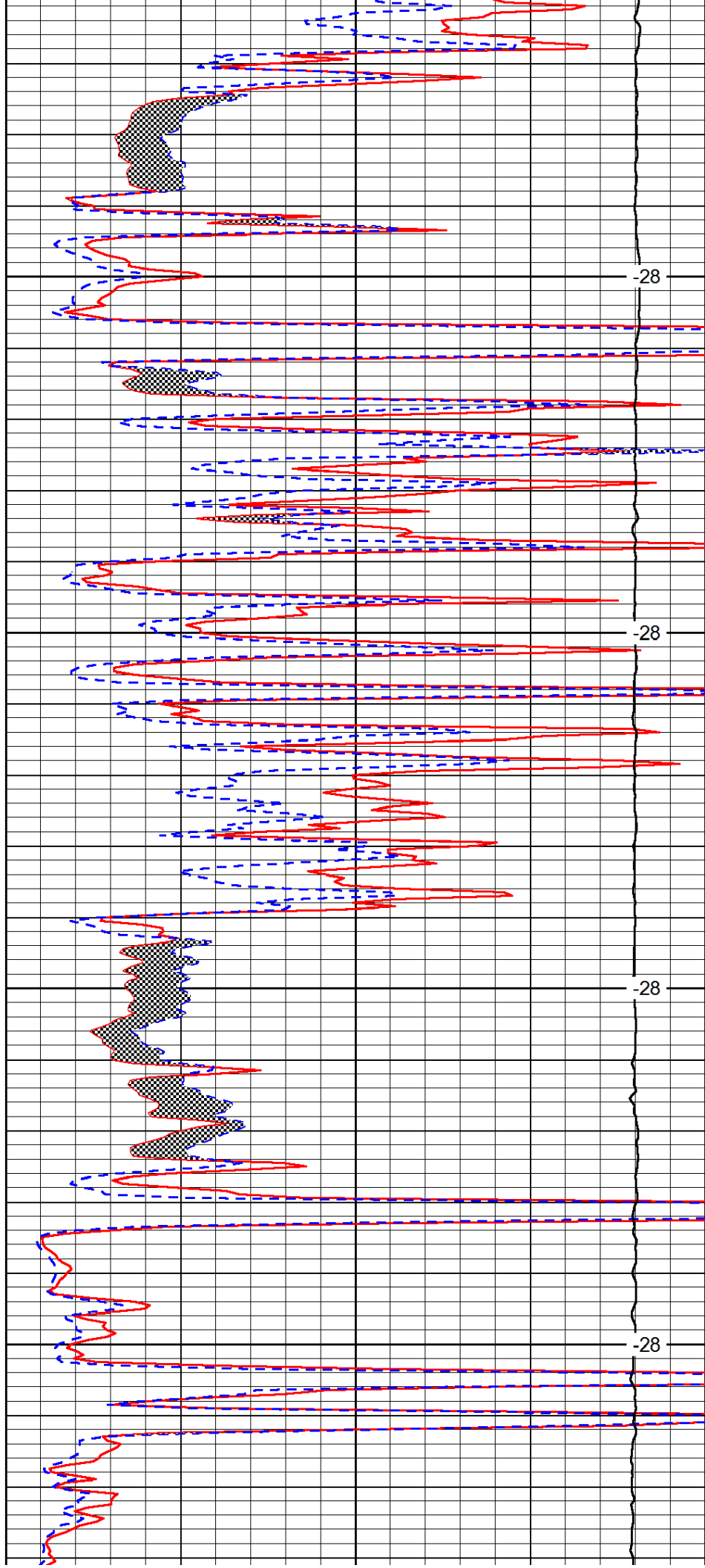


2750

2800

2850

2900

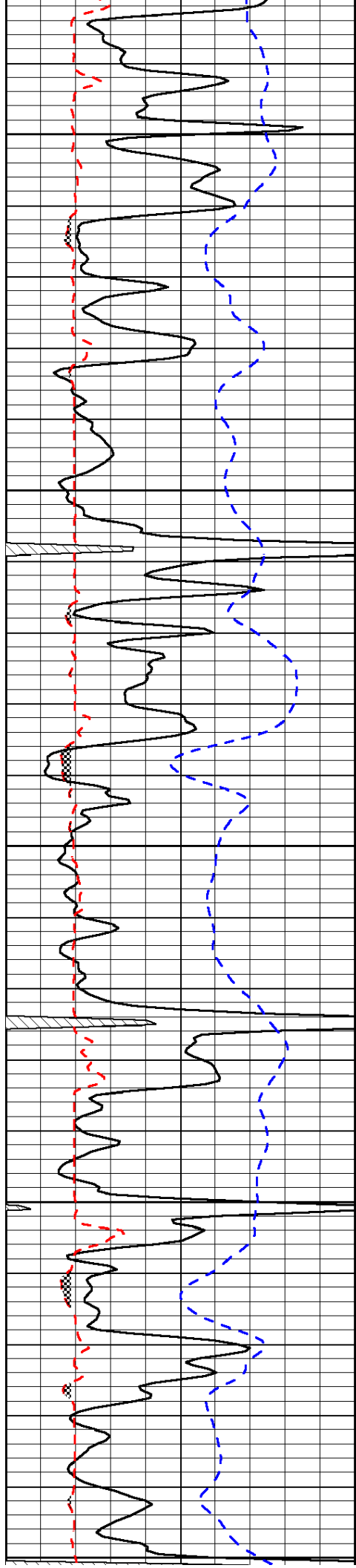


-28

-28

-28

-28



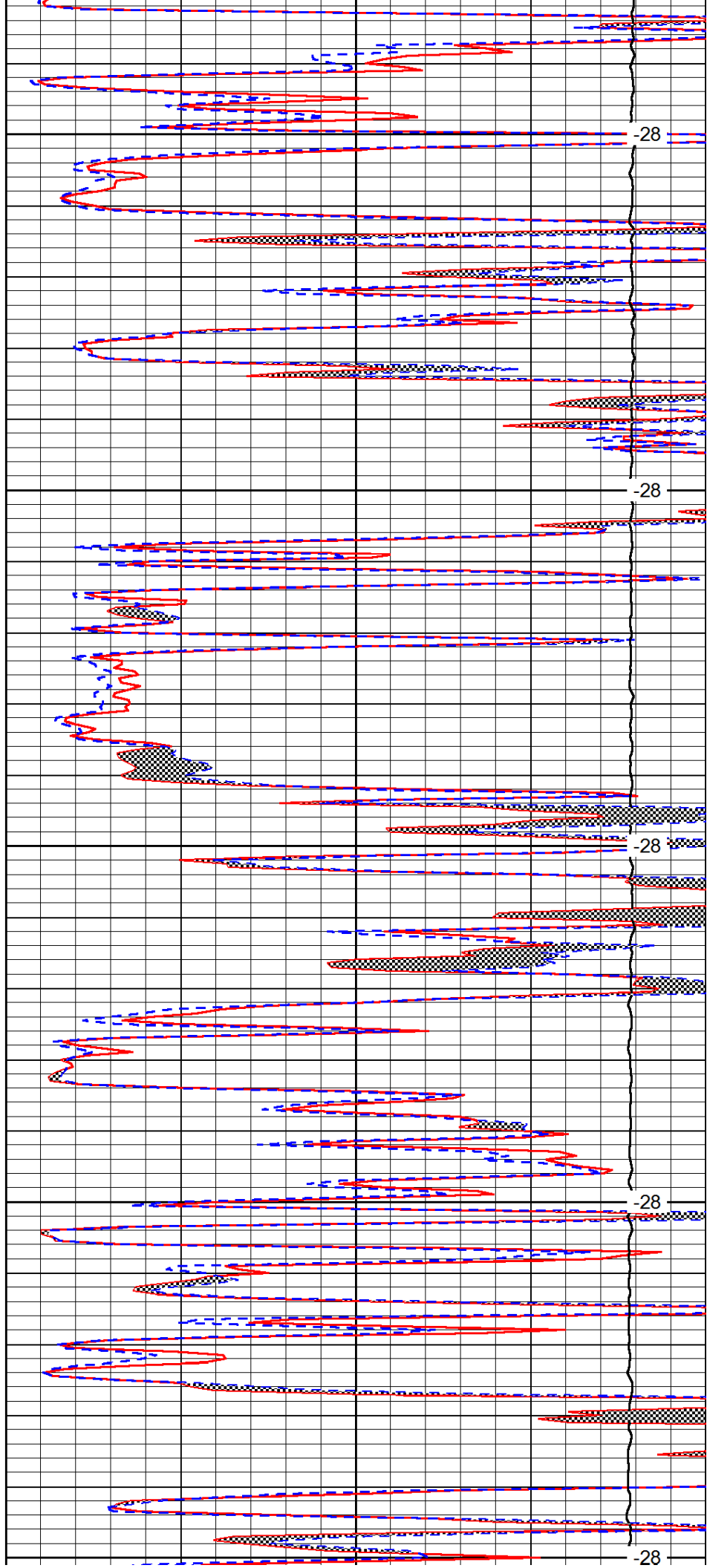
2950

3000

3050

3100

3150



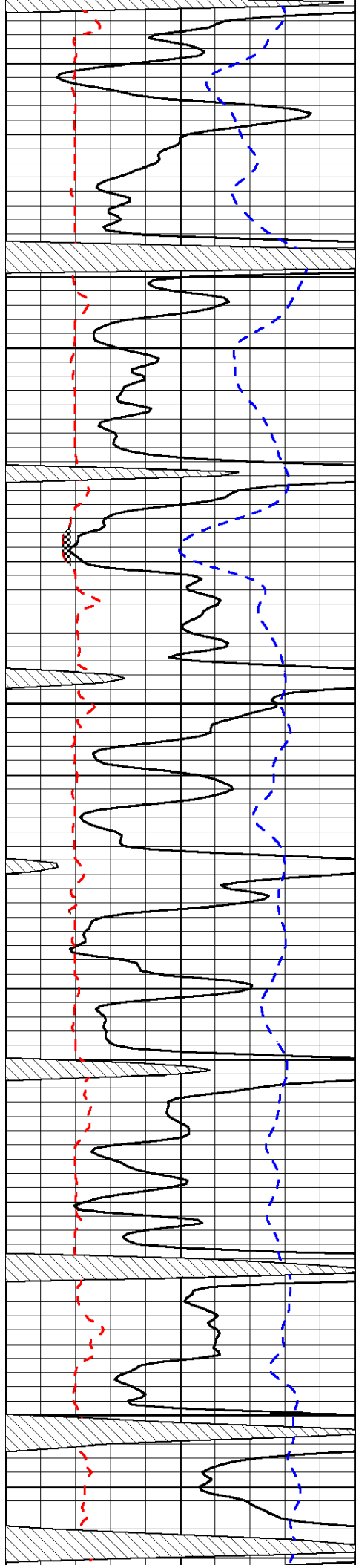
-28

-28

-28

-28

-28

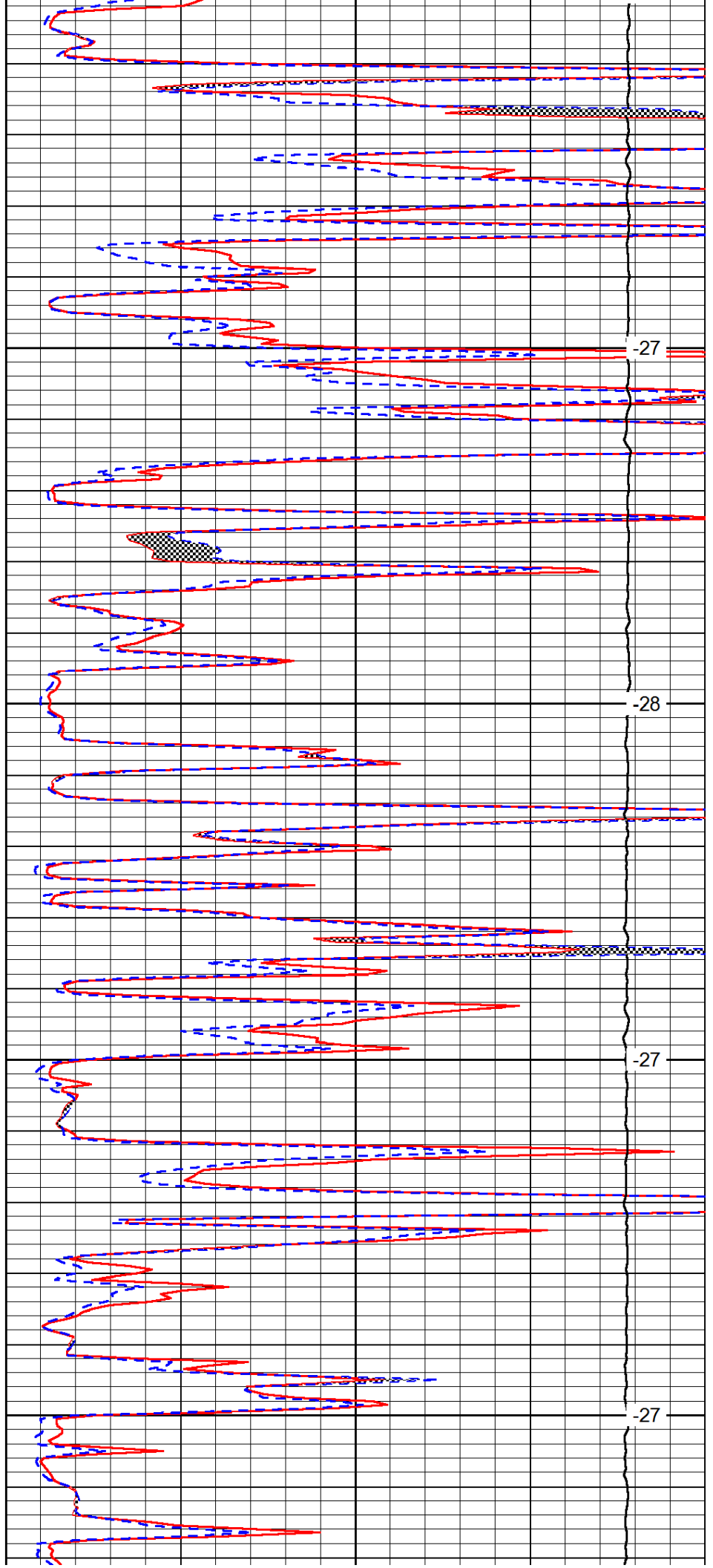


3200

3250

3300

3350

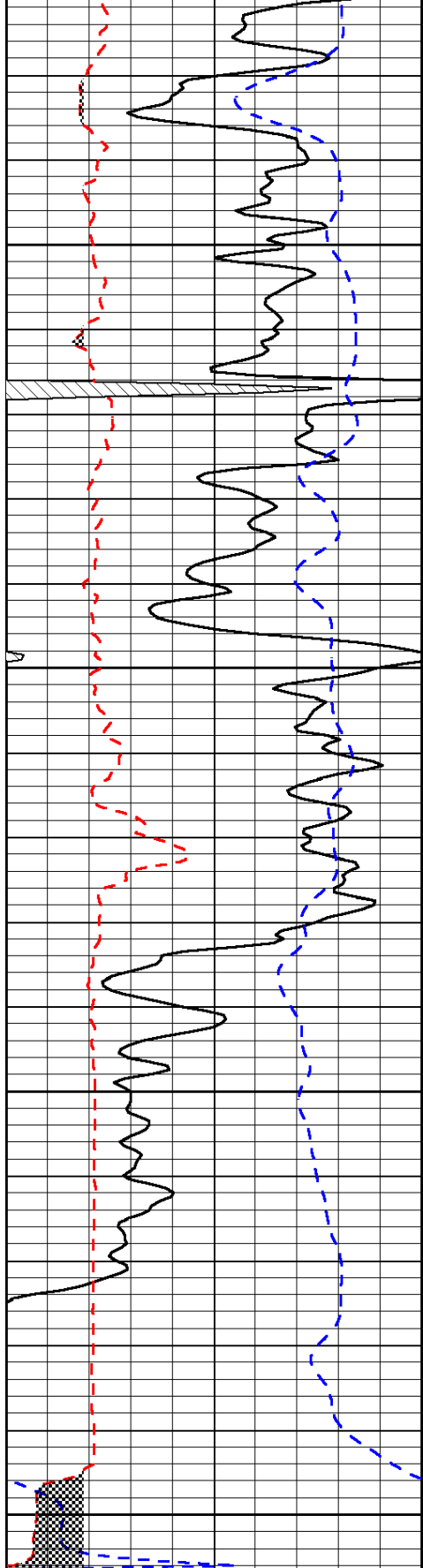


-27

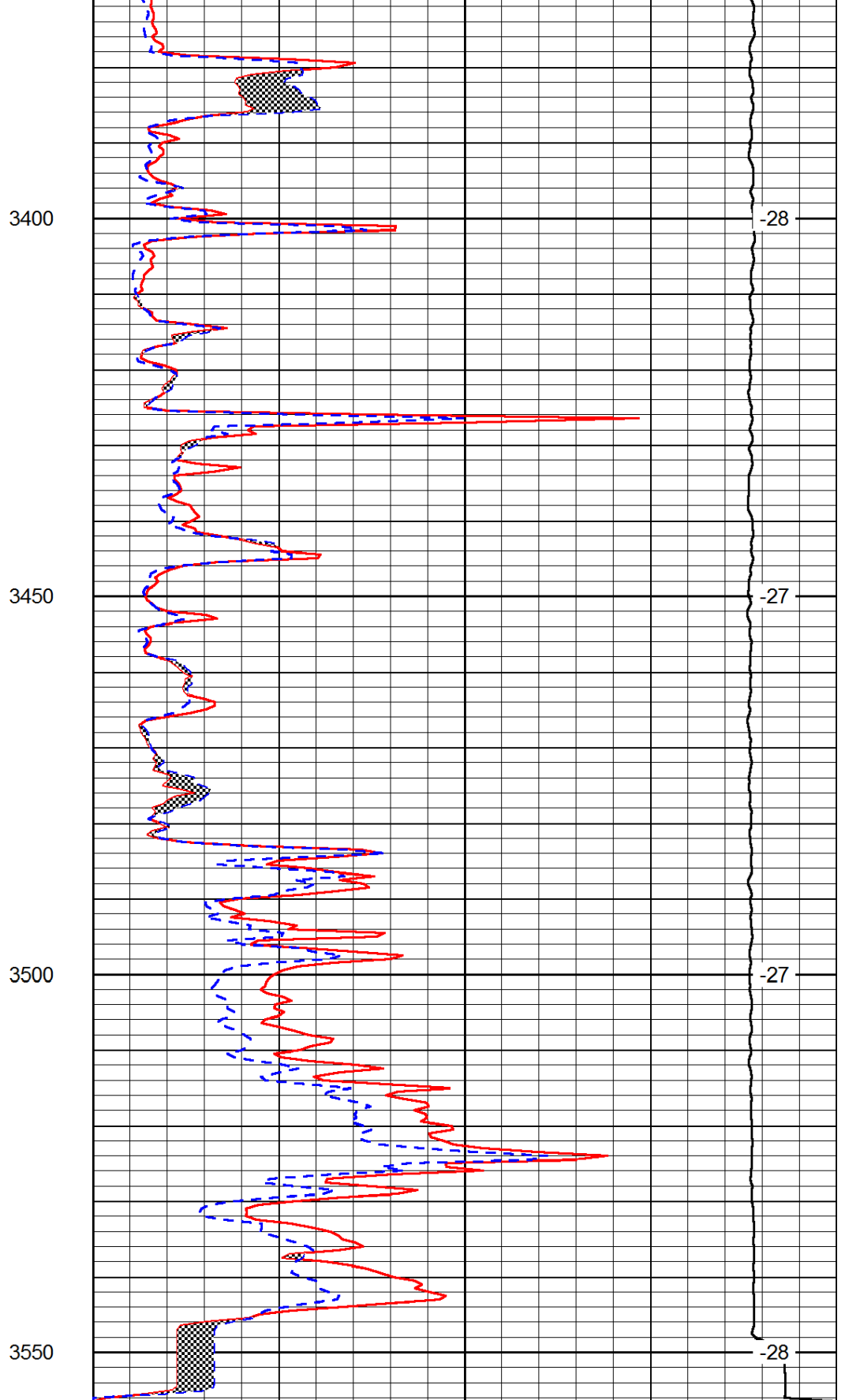
-28

-27

-27



0	Gamma Ray	150
6	Micro Log Caliper (GAPI)	16
-200	SP (mV)	0



0	Micro Inverse 1 X 1	40
0	Micro Normal 2"	40
15000	Line Weight	0

LSPD