

**COMPLETION
& PRODUCTION
SERVICES CO.**

**MICRO
LOG**

Company RICHLAN DRILLING
Well SCHREIBER #3
Field
County BARTON State KANSAS

Company RICHLAN DRILLING
Well SCHREIBER #3
Field
County BARTON
State KANSAS

Location: API #: 15-009-25807
370' FSL & 1280' FWL
SEC 17 TWP 16S RGE 12W
Permanent Datum GROUND LEVEL Elevation 1887
Log Measured From KELLY BUSHING 7' A.G.L.
Drilling Measured From KELLY BUSHING
Other Services
CDL/CNL
DIL
Elevation
K.B. 1894
D.F.
G.L. 1887

Date	1-30-13
Run Number	TW0
Depth Driller	3443
Depth Logger	3443
Bottom Logged Interval	3440
Top Log Interval	2700
Casing Driller	425
Casing Logger	425
Bit Size	7.875
Type Fluid in Hole	CHEMICAL MUD
Density / Viscosity	9.3 / 56
pH / Fluid Loss	10.5 / 8.0
Source of Sample	FLOWLINE
Rim @ Meas. Temp	1.10 @ 58F
Rmf @ Meas. Temp	0.83 @ 58F
Rmc @ Meas. Temp	1.32 @ 58F
Source of Rmf / Rmc	MEASURED
Rim @ BHT	.590 @ 109F
Time Circulation Stopped	10:00 P.M.
Time Logger on Bottom	12:00 A.M.
Maximum Recorded Temperature	109F
Equipment Number	860
Location	HAYS, KS.
Recorded By	RUPP
Witnessed By	BOB SCHREIBER

<<< Fold Here >>>

All interpretations are opinions based on inferences from electrical or other measurements and we cannot and do not guarantee the accuracy or correctness of any interpretation, and we shall not, except in the case of gross or willful negligence on our part, be liable or responsible for any loss, costs, damages, or expenses incurred or sustained by anyone resulting from any interpretation made by any of our officers, agents or employees. These interpretations are also subject to our general terms and conditions set out in our current Price Schedule.

Comments

NABORS PRODUCTION & COMPLETION SERVICES
785-628-6395
THANK YOU FOR YOUR BUSINESS
DIRECTIONS: BEAVER, 1N, 1/2W, N INTO.



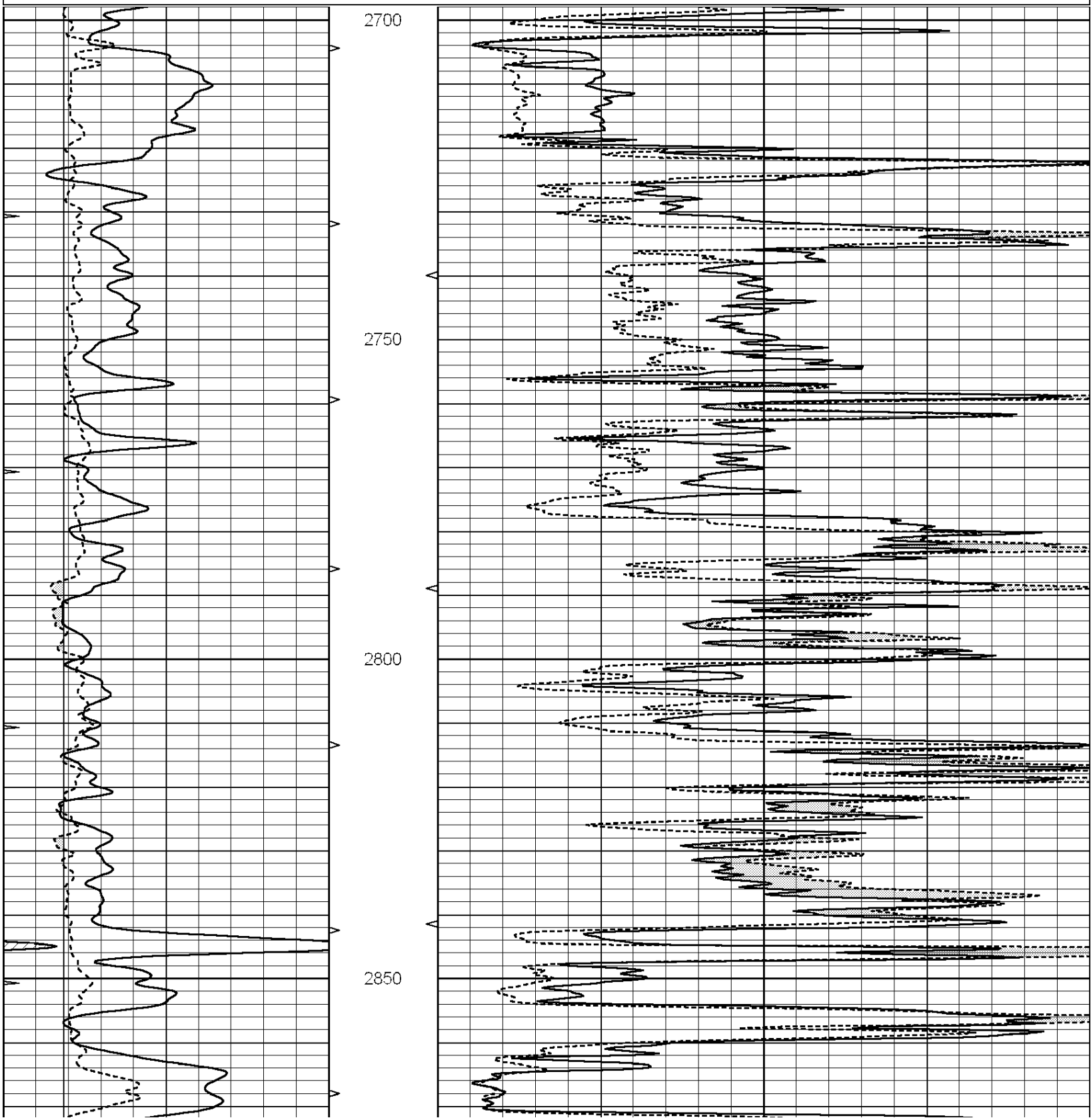
**COMPLETION
& PRODUCTION**

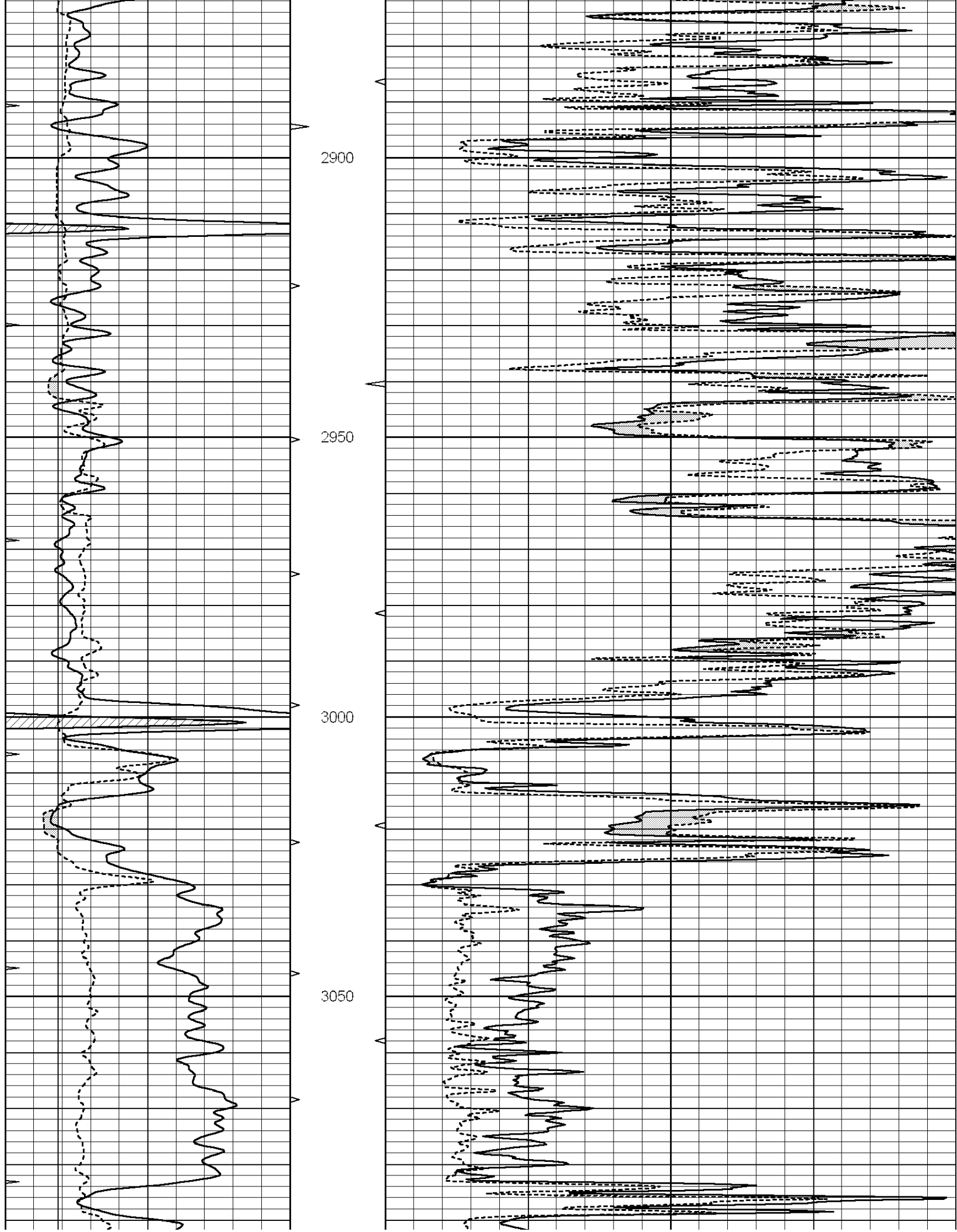
MAIN SECTION

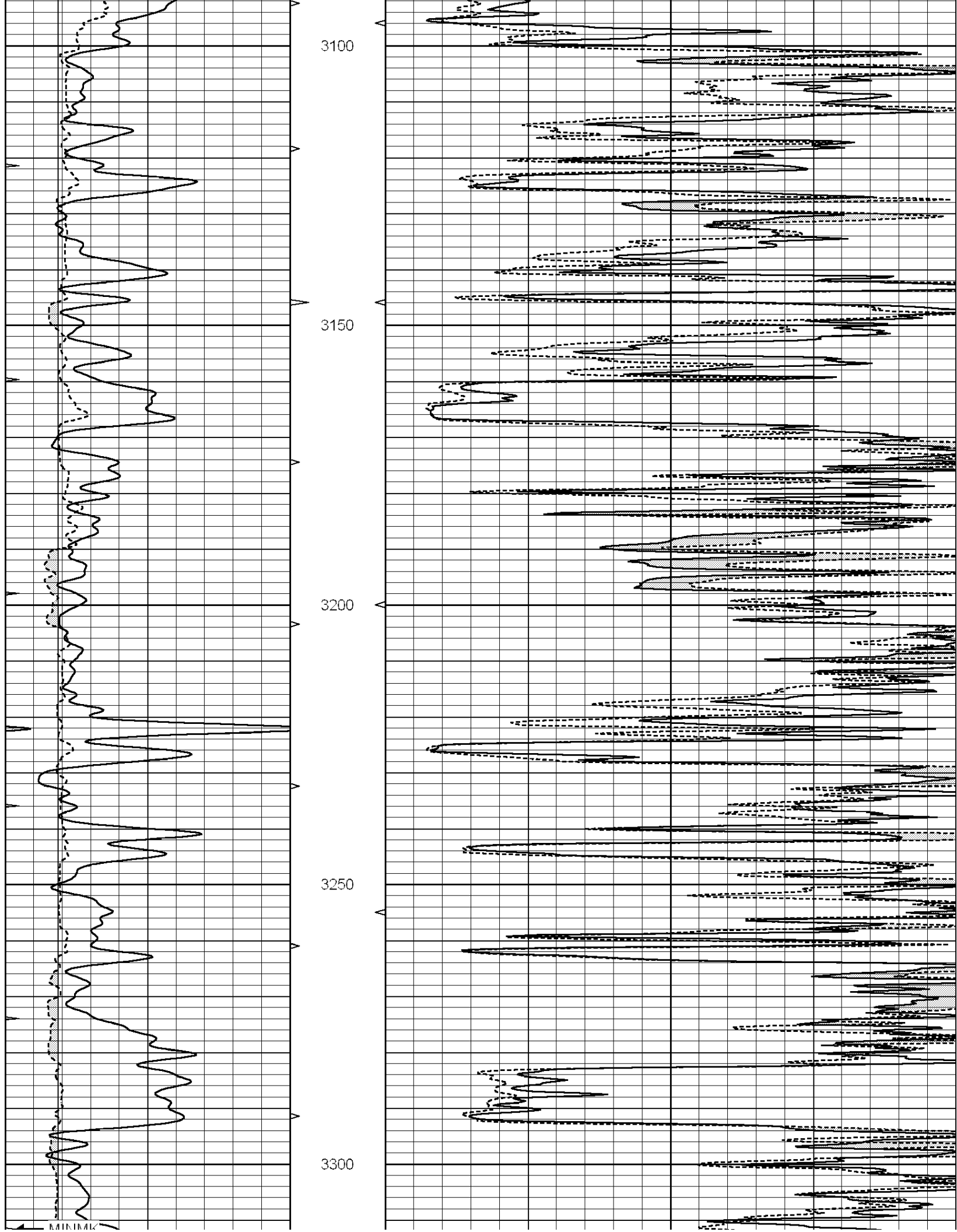
Database File: 010663ddn.db
 Dataset Pathname: pass5.2
 Presentation Format: micro
 Dataset Creation: Thu Jan 31 02:24:52 2013 by Calc Open-Cased 090629
 Charted by: Depth in Feet scaled 1:240

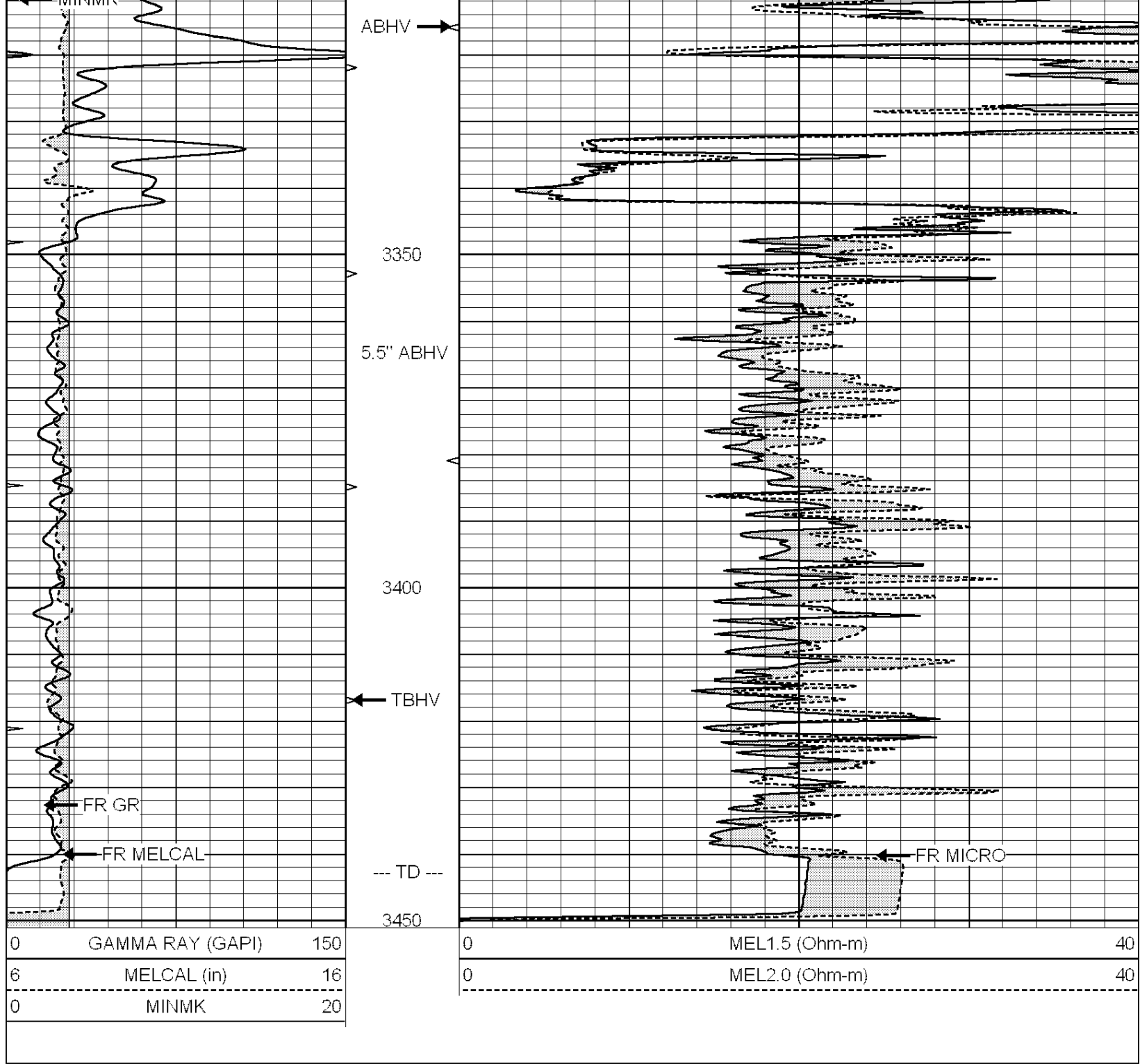
0	GAMMA RAY (GAPI)	150
6	MELCAL (in)	16
0	MINMK	20

0	MEL1.5 (Ohm-m)	40
0	MEL2.0 (Ohm-m)	40







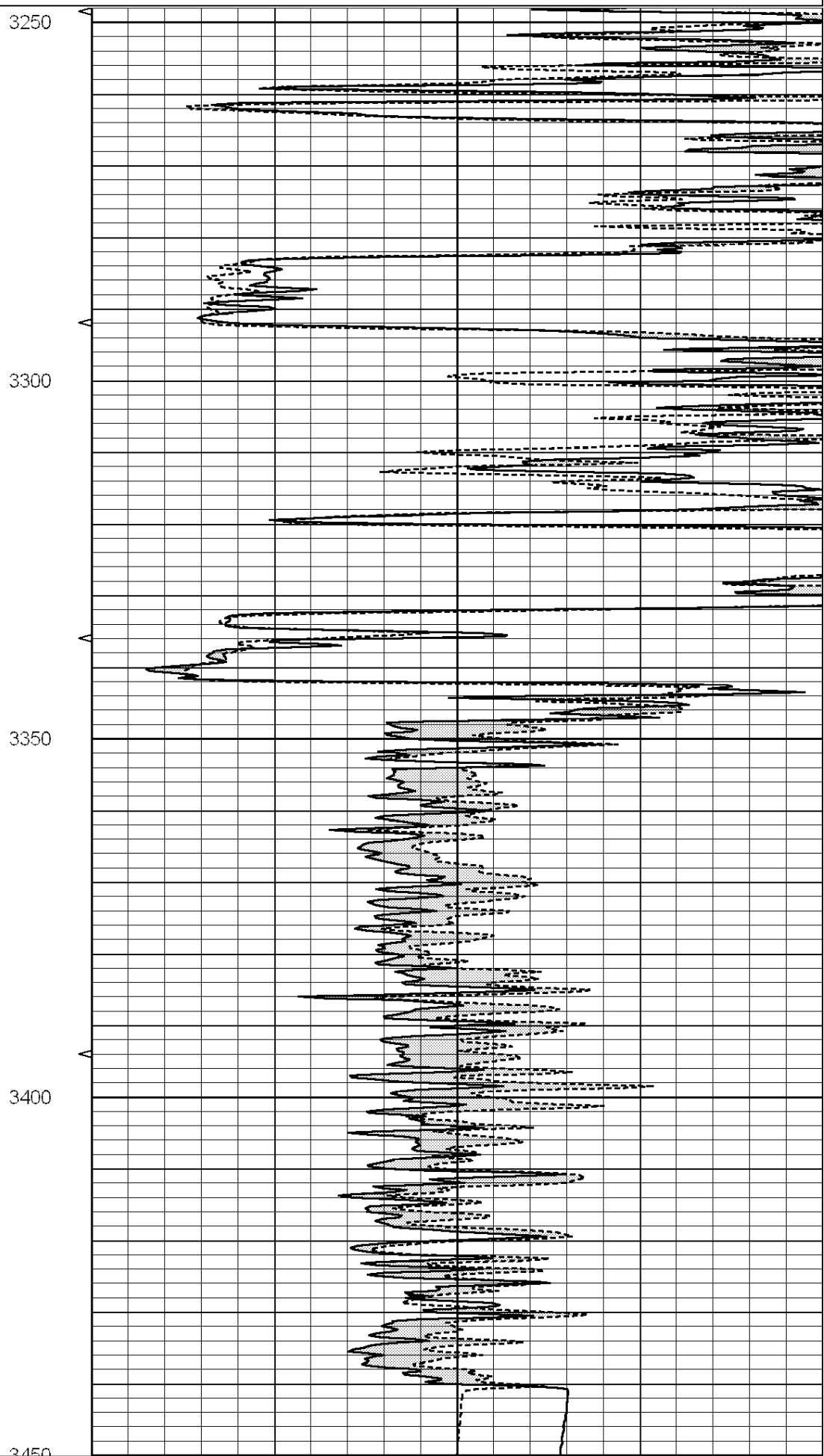
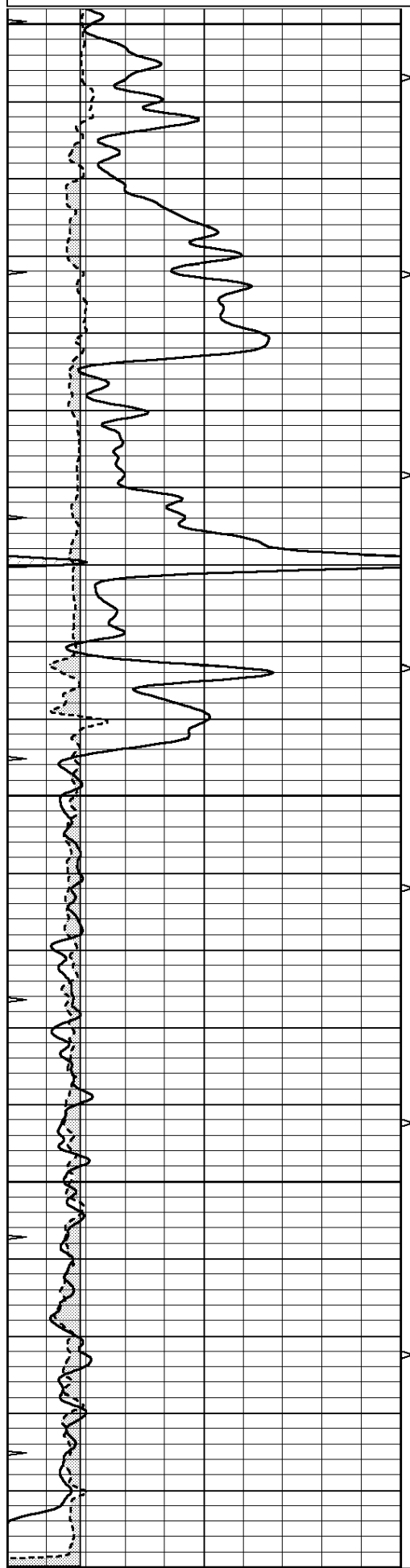


REPEAT SECTION

Database File: 010663ddn.db
 Dataset Pathname: pass4.2
 Presentation Format: micro
 Dataset Creation: Thu Jan 31 02:34:17 2013
 Charted by: Depth in Feet scaled 1:240

0	GAMMA RAY (GAPI)	150
6	MELCAL (in)	16
0	MINMK	20

0	MEL1.5 (Ohm-m)	40
0	MEL2.0 (Ohm-m)	40



0	GAMMA RAY (GAPI)	150
6	MELCAL (in)	16
0	MELCAL	20

0	MEL1.5 (Ohm-m)	40
0	MEL2.0 (Ohm-m)	40

Calibration Report

Database File: 010663ddn.db
 Dataset Pathname: pass5.2
 Dataset Creation: Thu Jan 31 02:24:52 2013 by Calc Open-Cased 090629

MICRO Calibration Report

Serial Number: MICRO4
 Tool Model: PROBE
 Performed: Thu Jan 31 02:12:48 2013

Caliper Calibration: Gain=2.993 Offset=-9.299

	Low Cal	High Cal
References	8.800	13.200
Readings	6.047	7.517

1.5" Calibration: Gain=45.000 Offset=-2.000

	Low Cal	High Cal
References	0.000	20.000
Readings	0.009	1.541

2" Calibration: Gain=42.000 Offset=-1.000

	Low Cal	High Cal
References	0.000	20.000
Readings	0.004	1.198

Gamma Ray Calibration Report

Serial Number: GR5
 Tool Model: OPEN
 Performed: Thu Jan 31 02:12:35 2013

Calibrator Value: 1.0 GAPI

Background Reading: 0.0 cps
 Calibrator Reading: 1.0 cps

Sensitivity: 1.5000 GAPI/cps