

MIDWEST SURVEYS
 LOGGING - PERFORATING - CONSULTING SERVICES
 P.O. Box 68, Ocala, Florida, KS 68084
 913.755.2128

GAMMA RAY / NEUTRON / CCL

File No.

Company DE Exploration, Inc.

Well T.E.A. No. I-3A

Field Edgerton - Southwest

County Johnson State Kansas

Location 2990 FSL & 880th FEL
NE-SW-SE-NE

Other Services Perforate

Sec. 1 Type 15s Rge. 21e
 Permanent Datum GL Elevation NA
 Log Measured From GL
 Drilling Measured From GL

Date 01-26-2013

Run Number One

Depth Driller 940.0

Bottom Logged Interval 872.2

Top Log Interval 20.0

Fluid Level Full

Type Fluid Water

Density / Viscosity NA

Salinity - PPM Cl NA

Max. Recorded Temp NA

Estimated Cement Top 0.0

Equipment No. Location 102 Osawatomie

Recorded By Steve Winkler

Witnessed By Doug Evans

BOREHOLE RECORD		CASING RECORD		TO
NO.	BIT	FROM	TO	FROM
One	9.875"	0.0	7.00"	0.0
Two	5.025"	22.0	940.0	2.875"
				6.5 #
				0.0
				614.8
				883.1

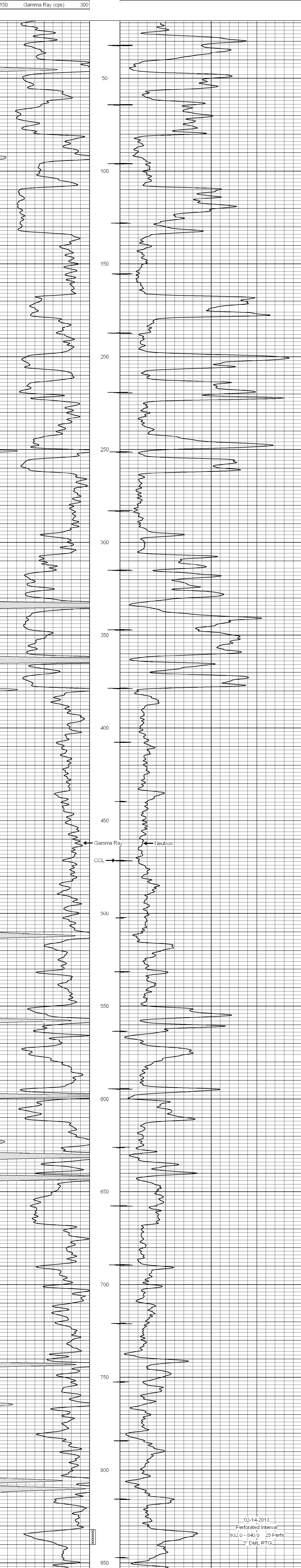
<<< Fold Here >>>

All interpretations are opinions based on inferences from electrical or other measurements and we cannot and do not guarantee the accuracy or correctness of any interpretation, and we shall not, except in the case of gross or willful negligence on our part, be liable or responsible for any loss, costs, damages, or expenses incurred or sustained by anyone resulting from any interpretation made by any of our officers, agents or employees. These interpretations are also subject to our general terms and conditions set out in our current Price Schedule.

Comments

Drilling Contractor :
Town Oilfield Services, Inc.

Database File: tea3ia.db
 Dataset Pathname: pass1
 Presentation Format: gr-n-ccl
 Dataset Creation: Sat Jan 26 12:17:07 2013 by Log SCH 111116
 Charted by: Depth in Feet scaled 1:240



02-14-2013
 Perforated Interval
 832.0 - 840.0 25 Perfs
 2" DML RTG