



MIDWEST SURVEYS
 LOGGING - PERFORATING - CONSULTING SERVICES
 P. O. Box 68, Osawatomie, KS 66064
 913 / 755 - 2128

GAMMA RAY / NEUTRON / CCL

File No. _____

Company **Laymon Oil II, LLC.**

Well **Shepard No. 39-12**

Field **Vernon**

County **Woodson**

State **Kansas**

Location **2475' FSL & 1485' FEL
SW-SW-4NW-SE**

Other Services
Perforate

Sec. **17** Twp. **24S** Rge. **16E** Elevation **1061'**

Permanent Datum **GL** KB NA

Log Measured From **GL** D.F. NA

Drilling Measured From **GL** G.L. **1061'**

Date **02-06-2013**

Run Number **One**

Depth Driller **1140.0**

Depth Logger **1129.5**

Bottom Logged Interval **200.0**

Top Log Interval **Full**

Fluid Level

Type Fluid **Water**

Density / Viscosity **NA**

Salinity - PPM Cl **NA**

Max Recorded Temp **NA**

Estimated Cement Top **0.0**

Equipment No. **104** Location **Osawatimie**

Recorded By **Gary Michels**

Witnessed By **Mike Laymon**

BORE-HOLE RECORD		CASING RECORD			
RUN	NO.	TO	FROM	TO	FROM
One	12.25"	0.0	40.0	8.625"	20.0#
Two	6.00"	40.0	1140.0	2.875"	6.5#
					0.0
					1130.0

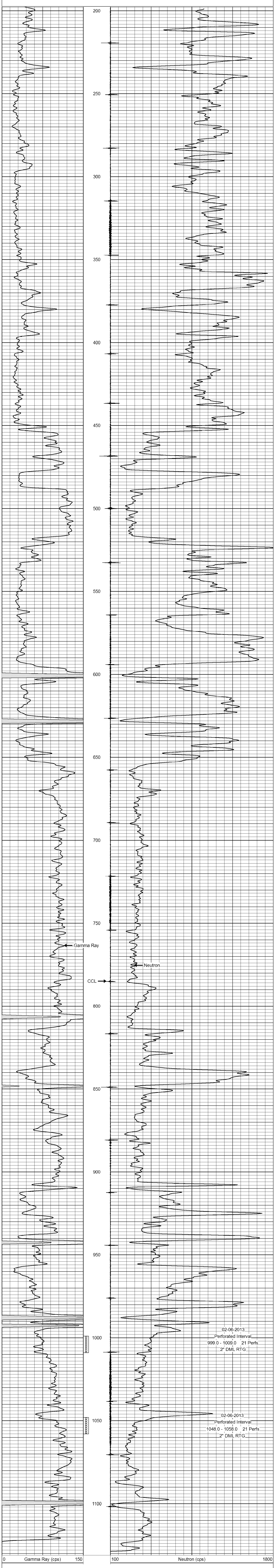
<<< Fold Here >>>

All interpretations are opinions based on inferences from electrical or other measurements and we cannot and do not guarantee the accuracy or correctness of any interpretation, and we shall not, except in the case of gross or willful negligence on our part, be liable or responsible for any loss, costs, damages, or expenses incurred or sustained by anyone resulting from any interpretation made by any of our officers, agents or employees. These interpretations are also subject to our general terms and conditions set out in our current Price Schedule.

Comments

Drilling Contractor :
Laymon Oil II, LLC.

Database File: shepard39.db
 Dataset Pathname: pass1
 Presentation Format: gr-n-ccl
 Dataset Creation: Wed Feb 06 13:18:02 2013 by Log SCH 111116
 Charted by: Depth in Feet scaled 1:240



02-06-2013
Perforated Interval
999.0 - 1009.0 21 Perfs
2" DML RTG

02-06-2013
Perforated Interval
1048.0 - 1058.0 21 Perfs
2" DML RTG