



Pioneer Energy Services

Dual Compensated Porosity Log

API No.	15-007-23,976-00-00		
Company	R & B Oil & Gas, Inc.		
Well	Fischer-Crask No. 2		
Field	Traffas East		
County	Barber	State	Kansas
Location	SW NW SW 1650' FSL & 330' FWL		
	Sec: 33	Twp: 32s	Rge: 10W
Permanent Datum	Ground Level	Elevation	1495
Log Measured From	Kelly Bushing	10 Ft. Above Perm. Datum	
Drilling Measured From	Kelly Bushing		
Date	12/21/2012	Elevation	K.B. 1505 D.F. 1495 G.L. 1495

Run Number	One		
Type Log	CNL / CDL		
Depth Driller	4960		
Depth Logger	4957		
Bottom Logged Interval	4936		
Top Logged Interval	2550		
Type Fluid In Hole	Chemical		
Salinity, PPM CL	4.000		
Density	9.3		
Level	Full		
Max. Rec. Temp. F	126		
Operating Rig Time	3 1/2 Hours		
Equipment -- Location	108	Hays	
Recorded By	D. Martin		
Witnessed By	Tim Pierce		

Borehole Record				Casing Record			
Run No.	Bit	From	To	Size	Wgt.	From	To
One	12.25	00	265	8.625	23#	00	265
Two	7.875	265	TD				

<<< Fold Here >>>

All interpretations are opinions based on inferences from electrical or other measurements and we cannot and do not guarantee the accuracy or correctness of any interpretation, and we shall not, except in the case of gross or willful negligence on our part, be liable or responsible for any loss, costs, damages, or expenses incurred or sustained by anyone resulting from any interpretation made by any of our officers, agents or employees. These interpretations are also subject to our general terms and conditions set out in our current Price Schedule.

Comments

Thank you for using Log-Tech, Inc.
(785) 625-3858

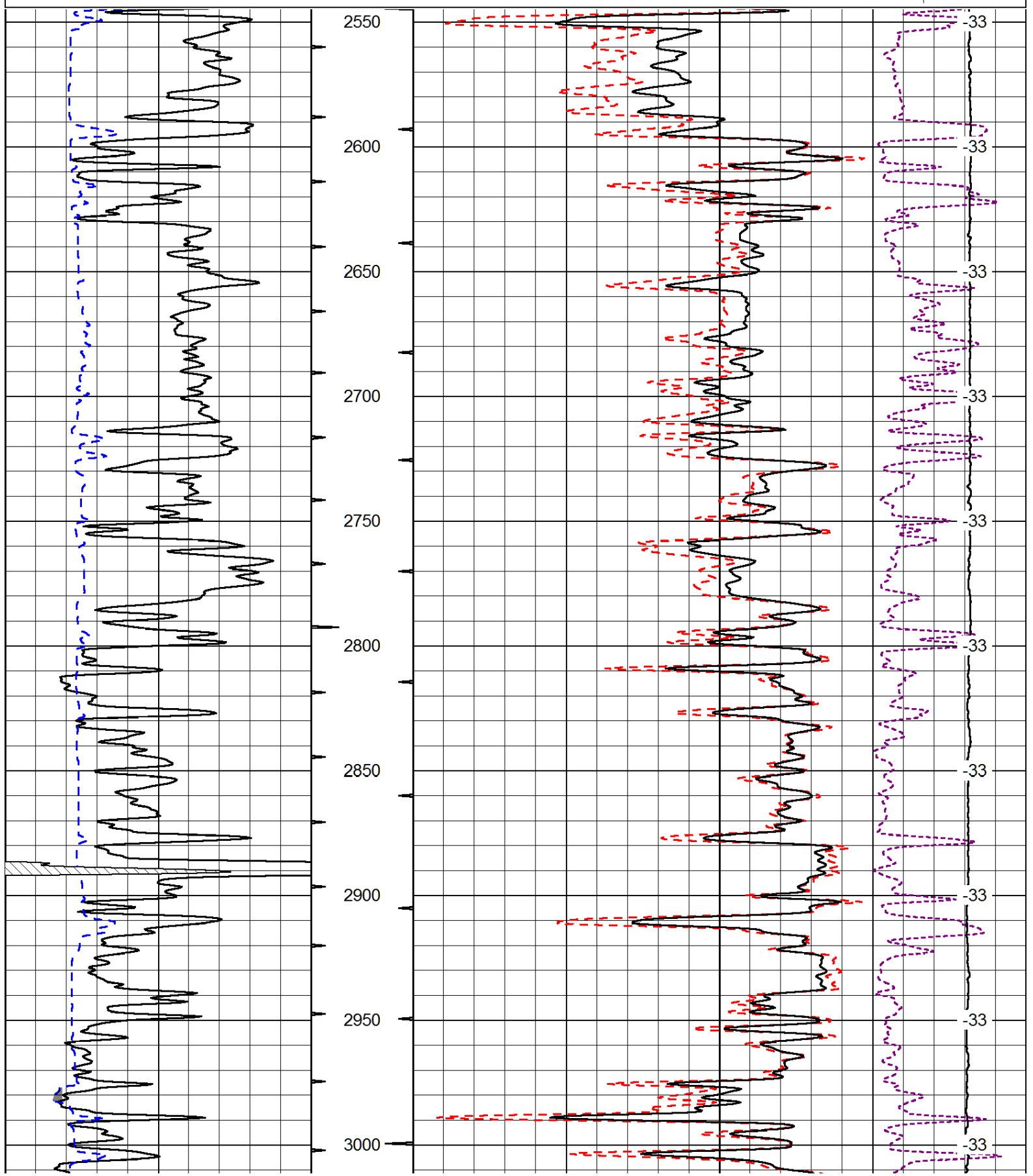
Sharon, KS
W Edge, 2 1/2 S, E Into

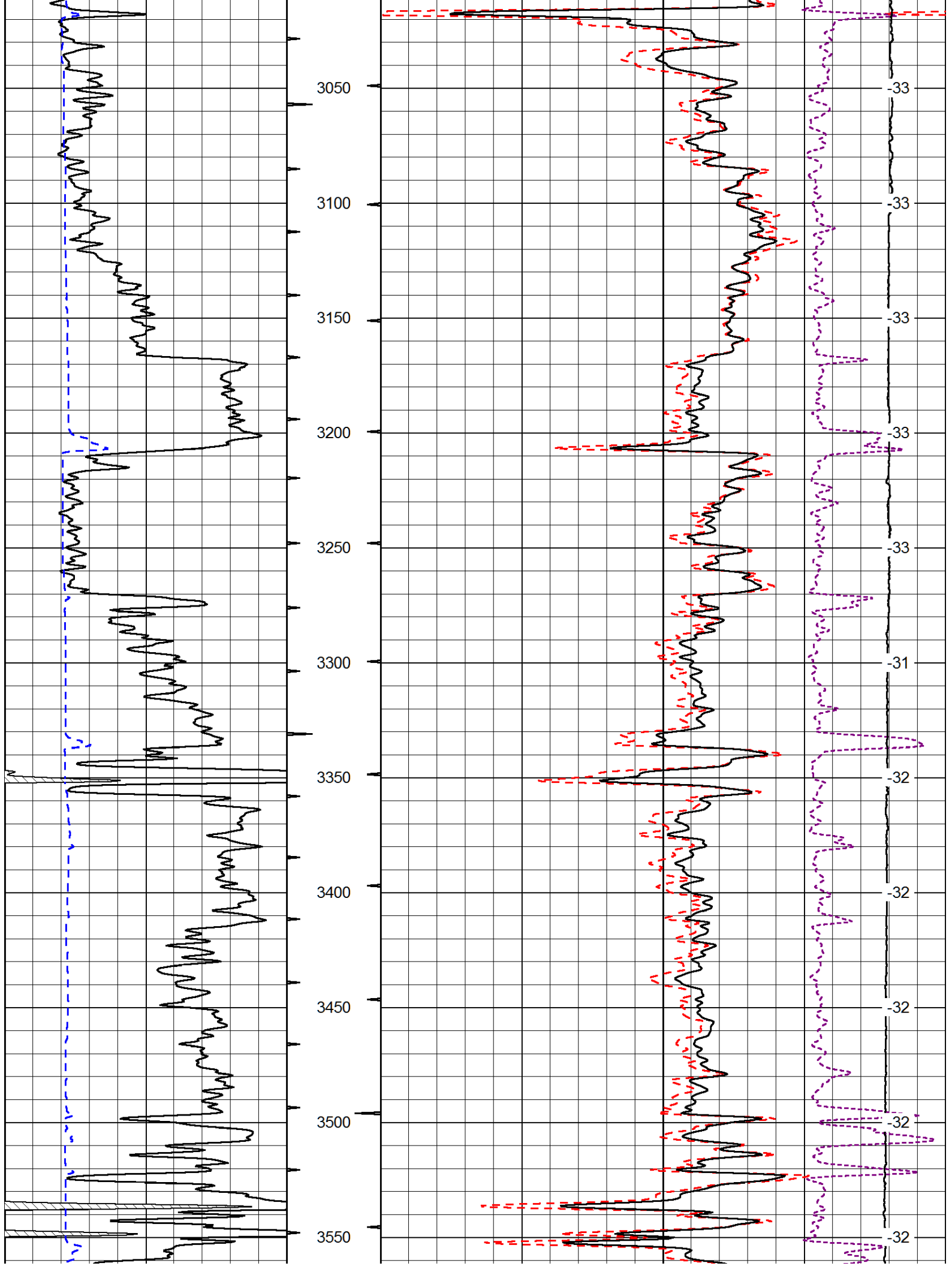
Database File: r&bhd.db
 Dataset Pathname: DIL/rbstk
 Presentation Format: cdl
 Dataset Creation: Fri Dec 21 16:07:30 2012
 Charted by: Depth in Feet scaled 1:600

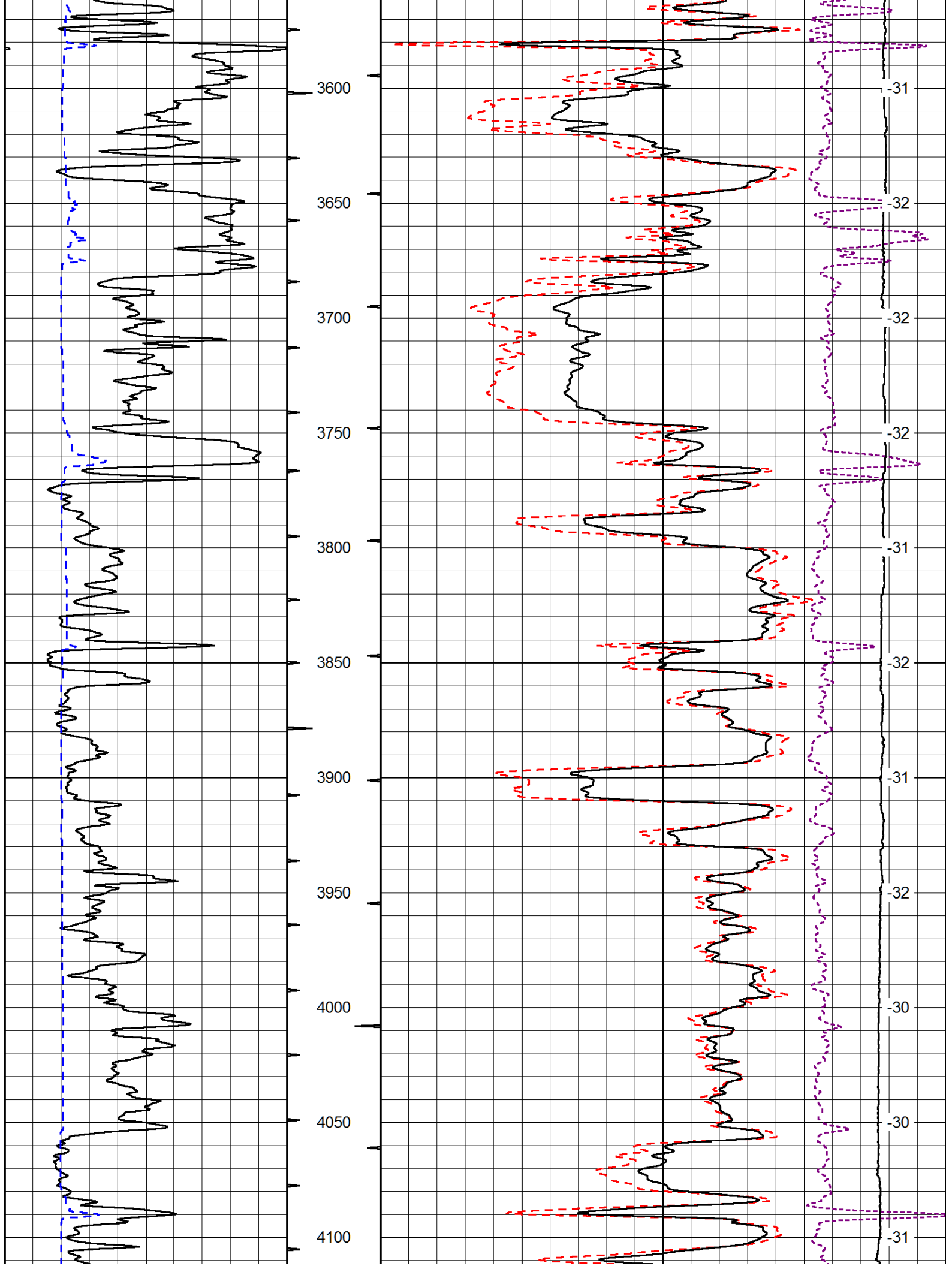
0	Gamma Ray (GAPI)	150
6	Caliper (in)	16

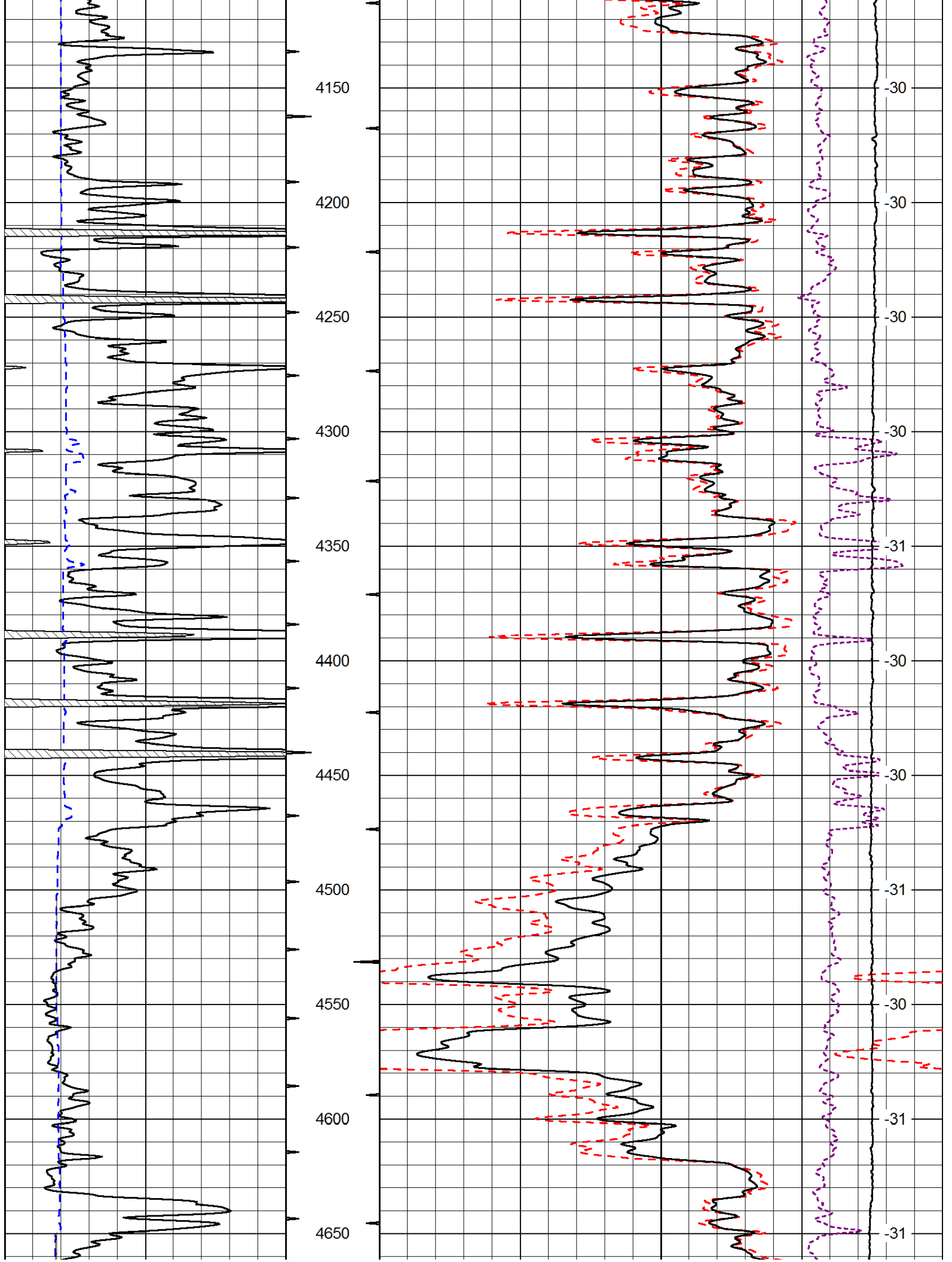
30	Compensated Density (pu)	-10
2	Bulk Density (g/cc)	3
15000	Line Tension (lb)	0
-0.25	Correction (g/cc)	0.25

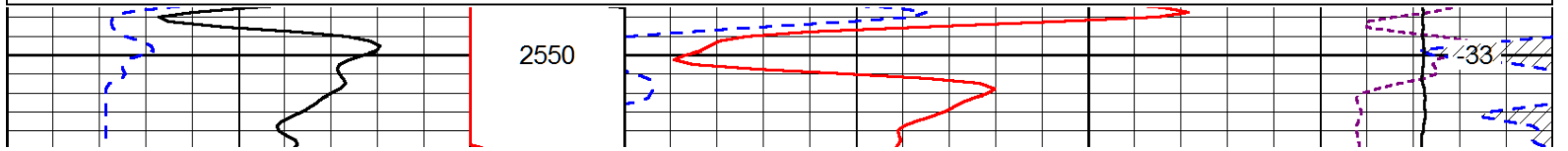
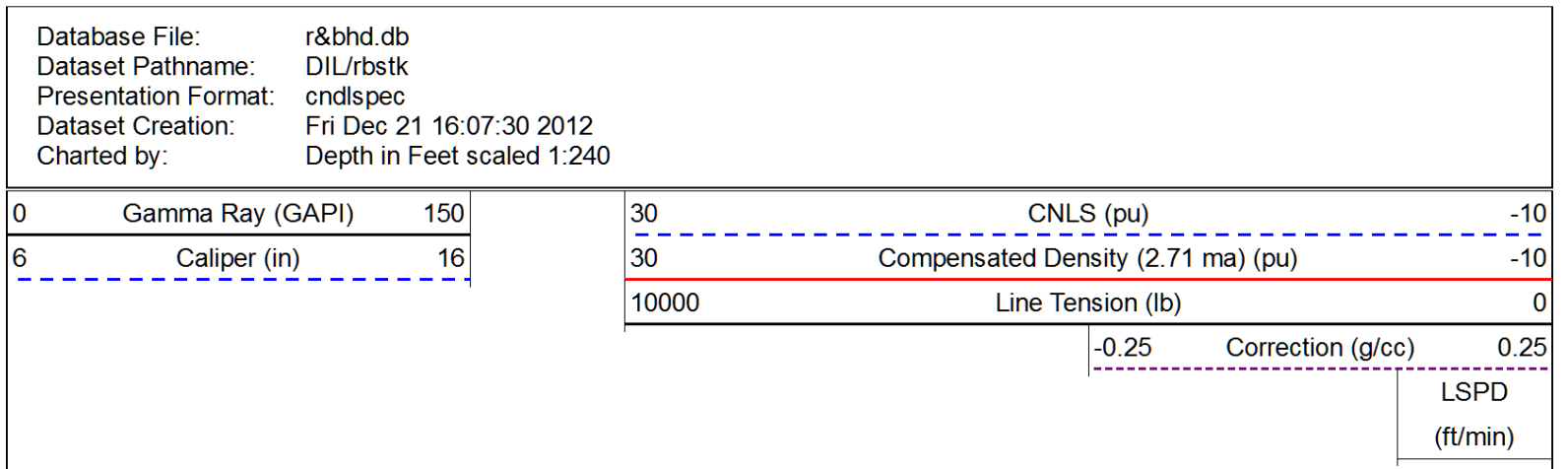
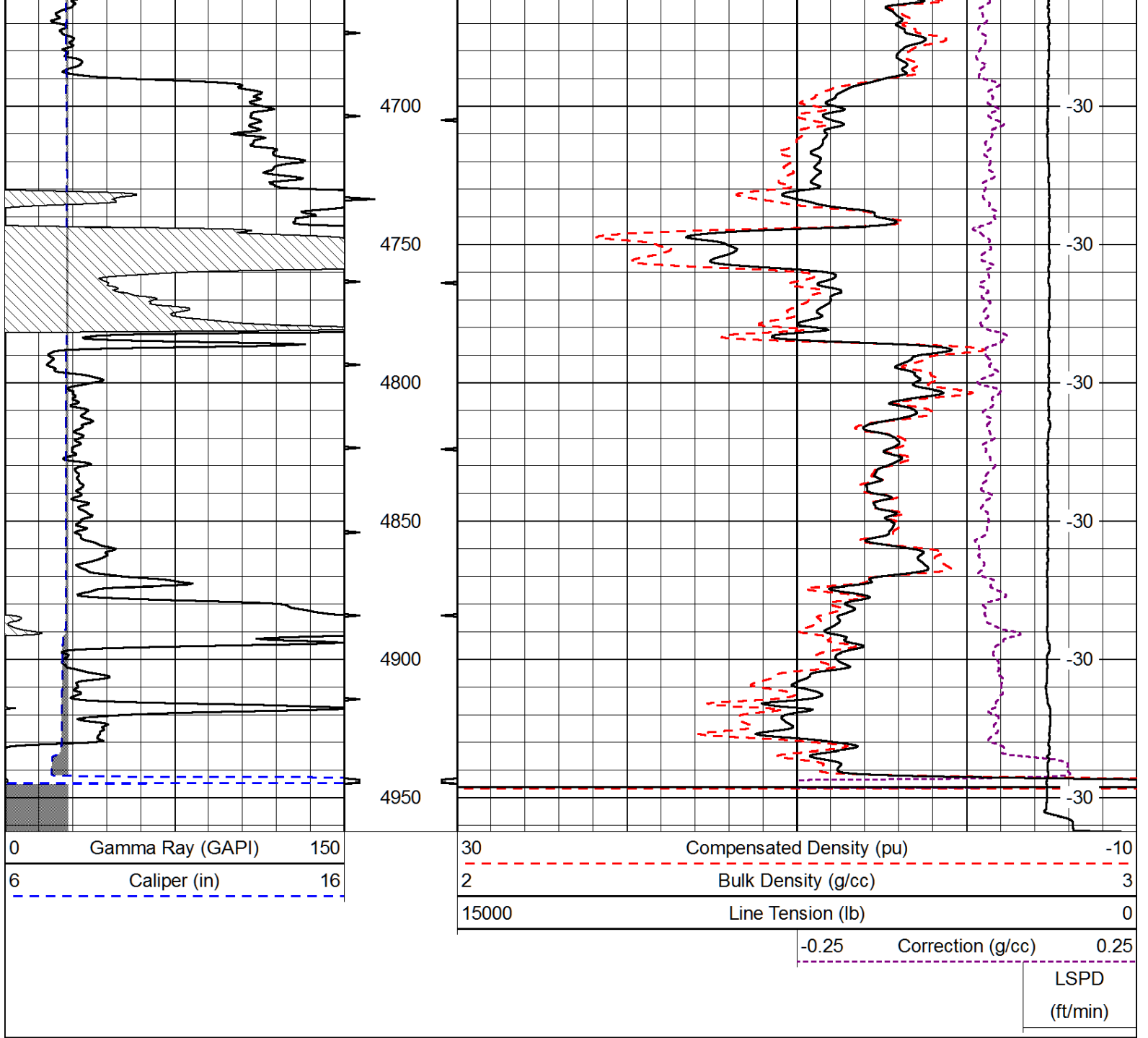
LSPD
(ft/min)

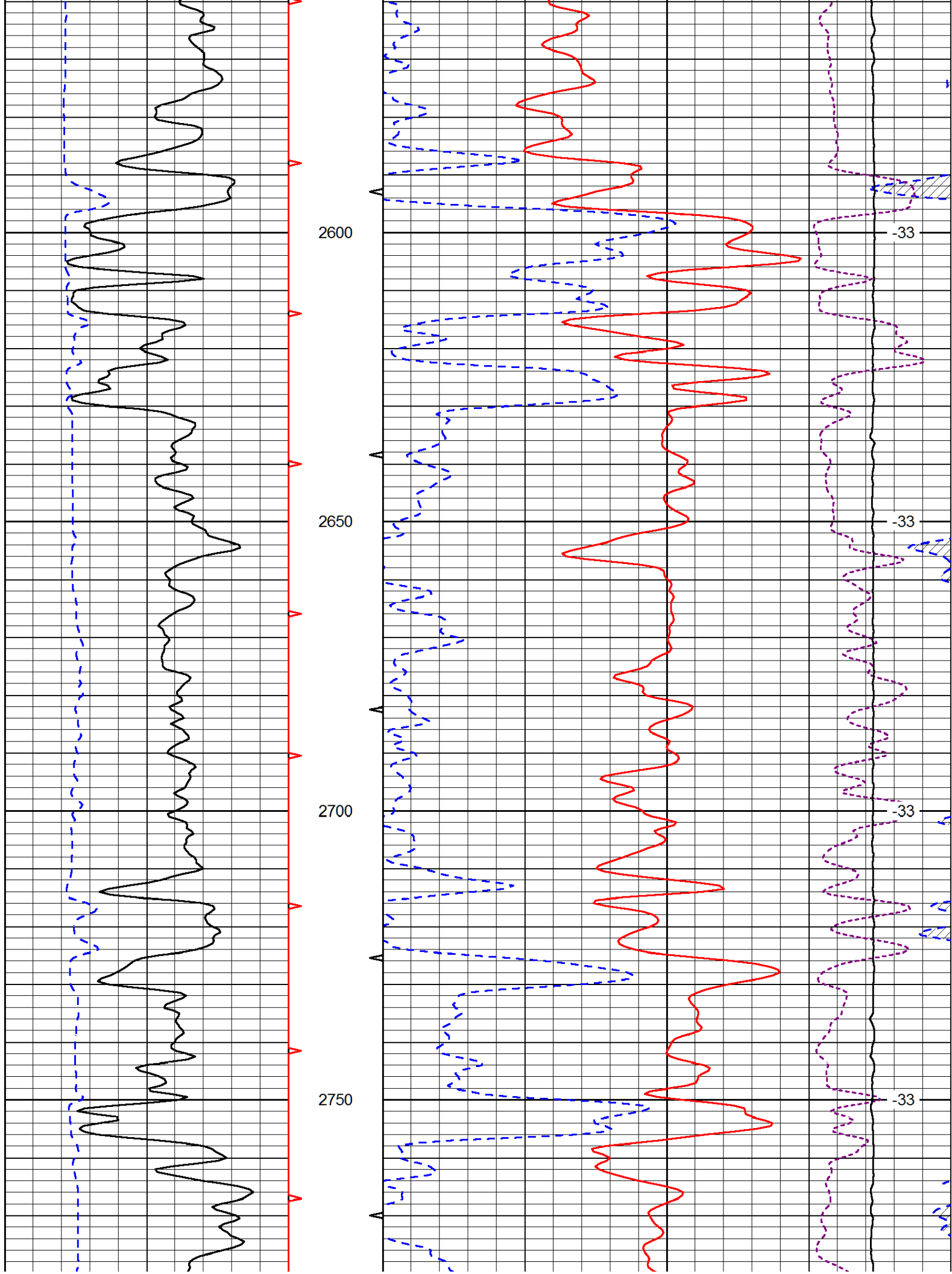


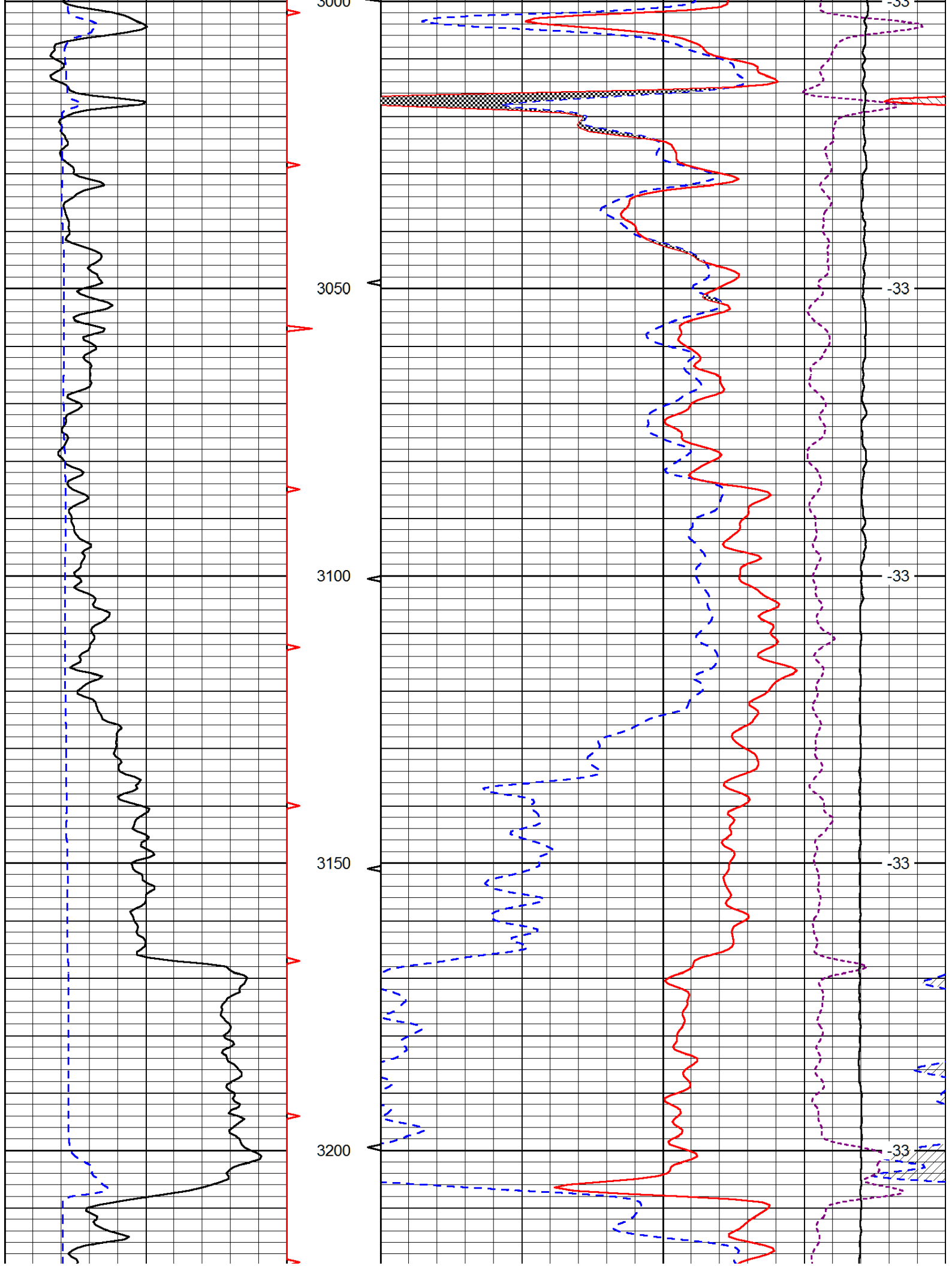


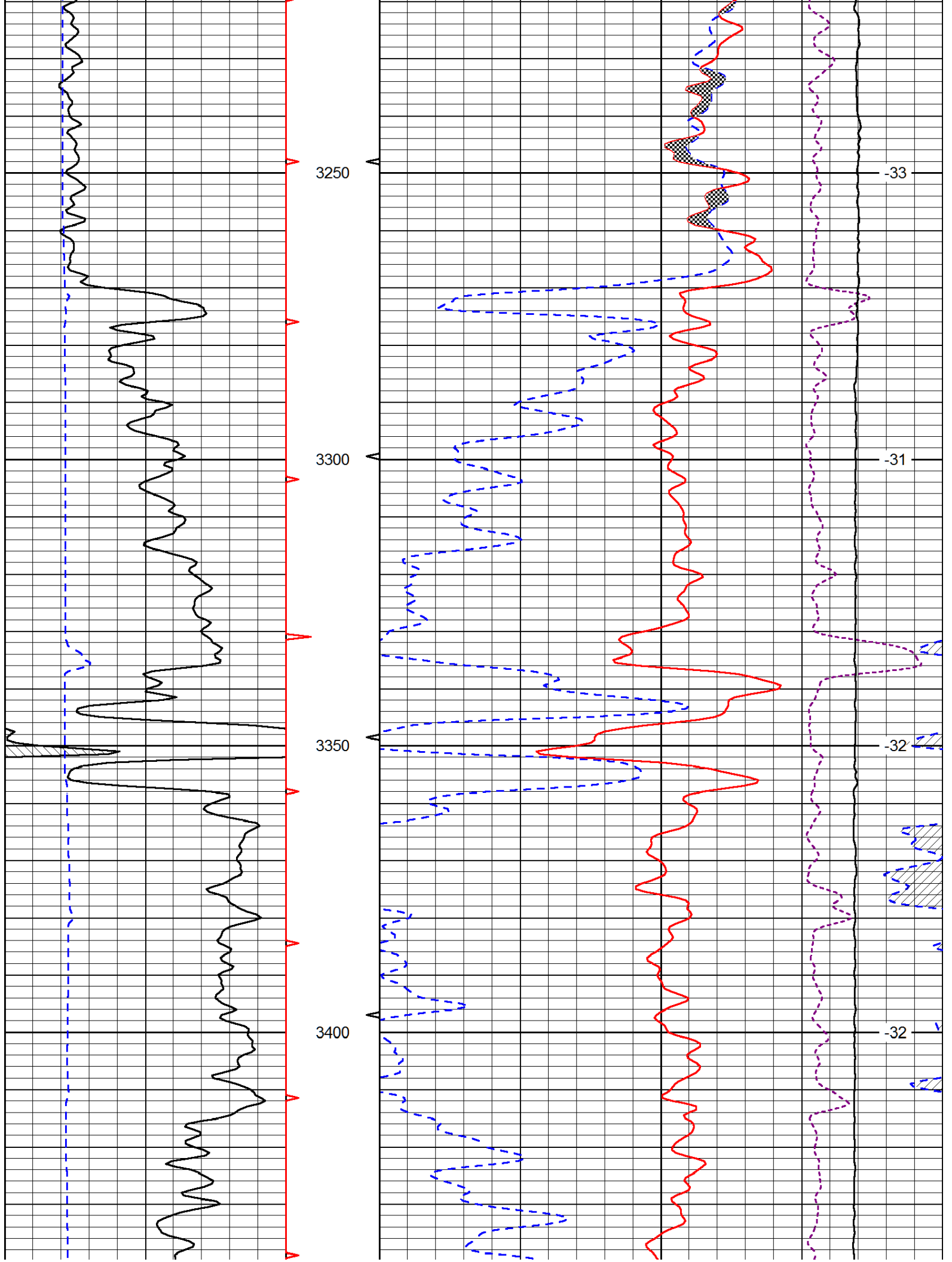


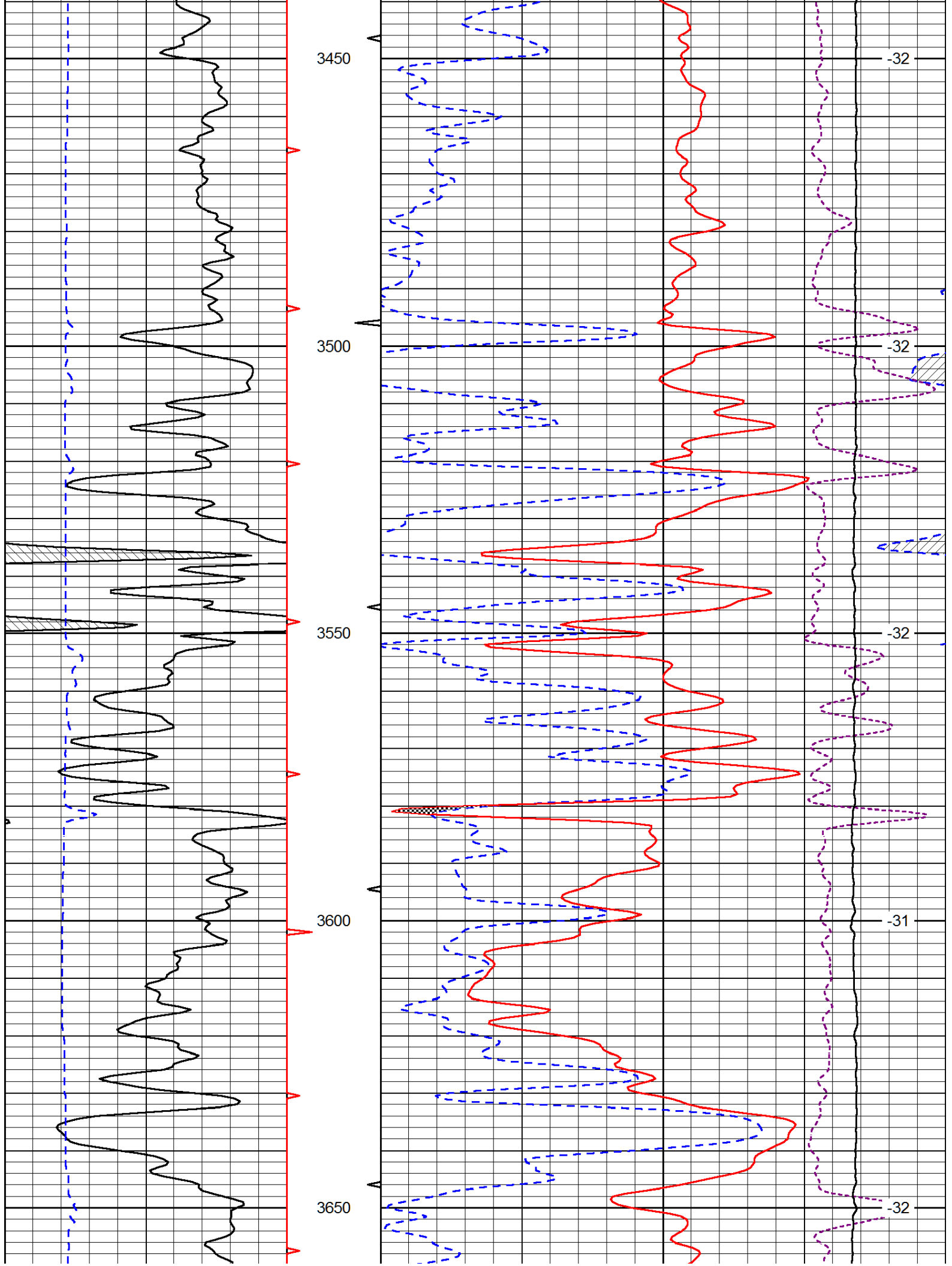


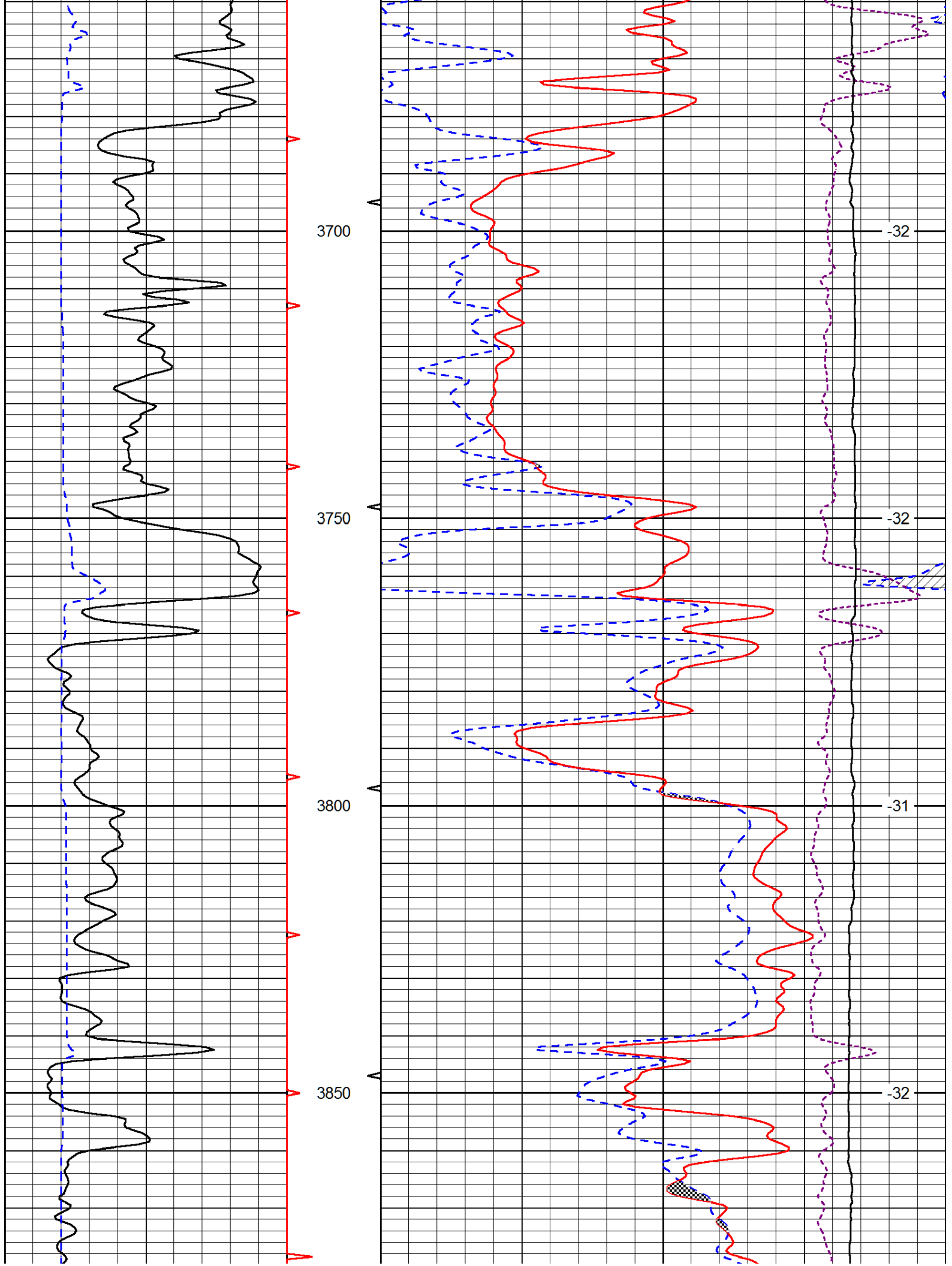


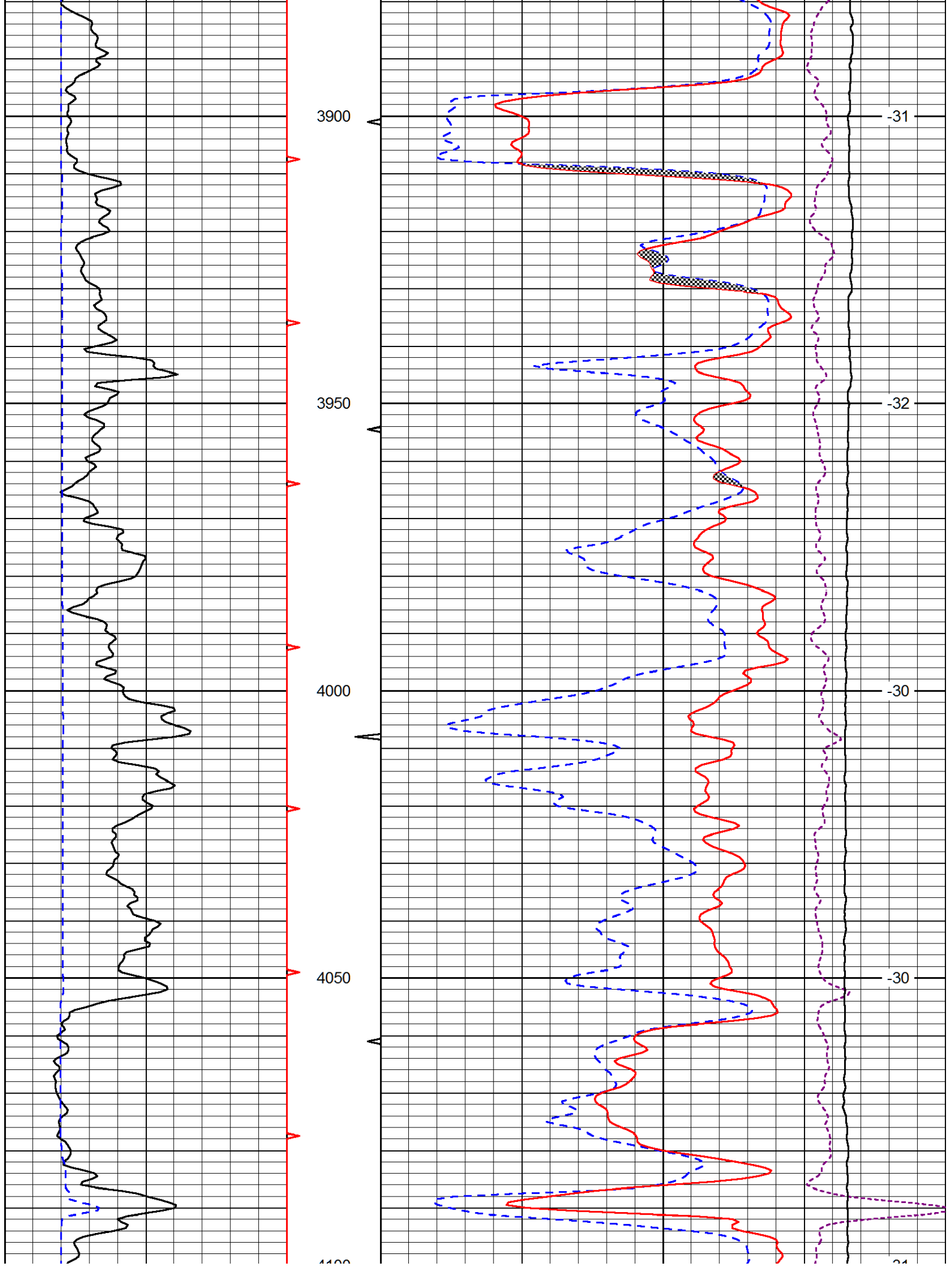


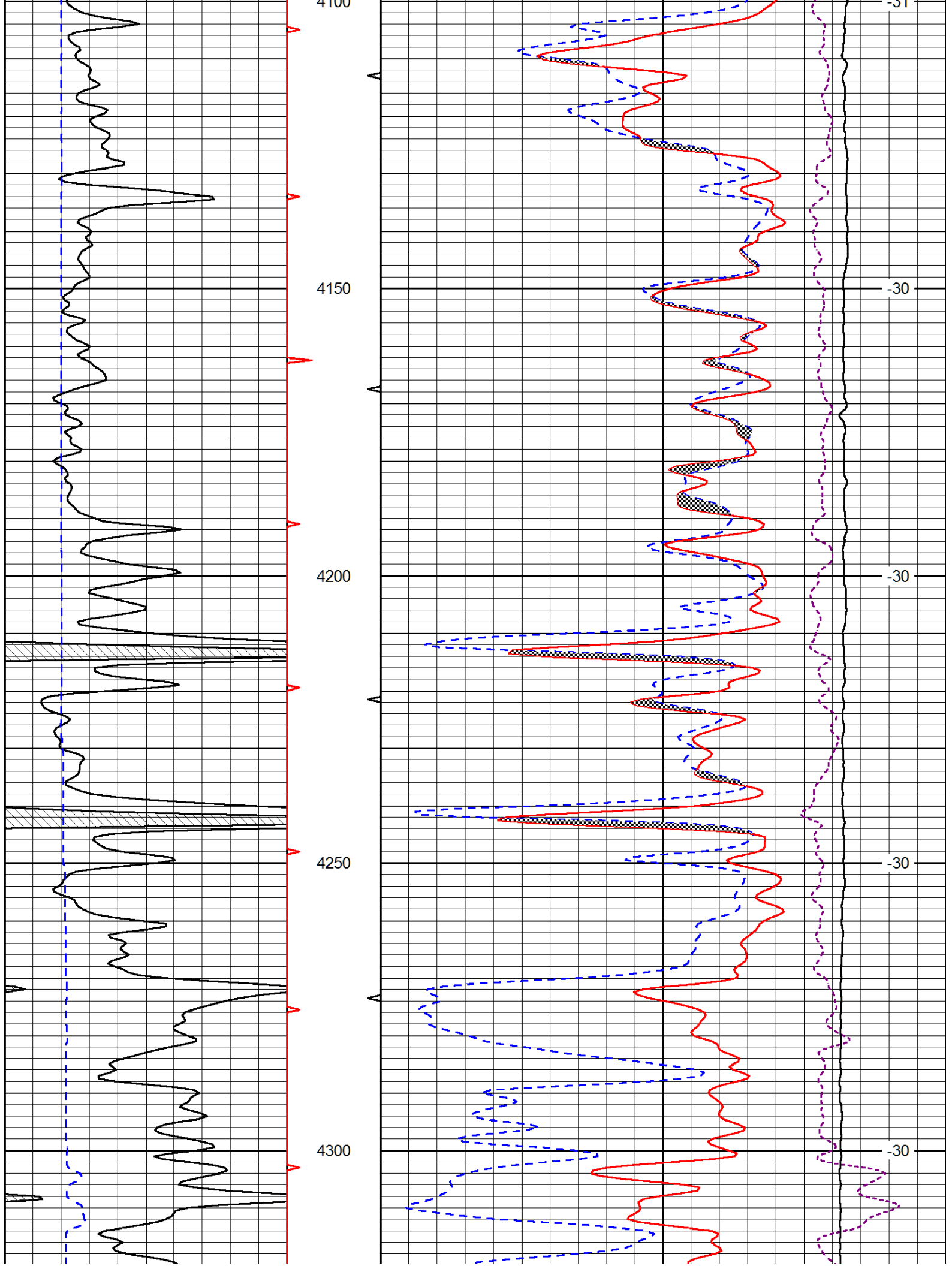


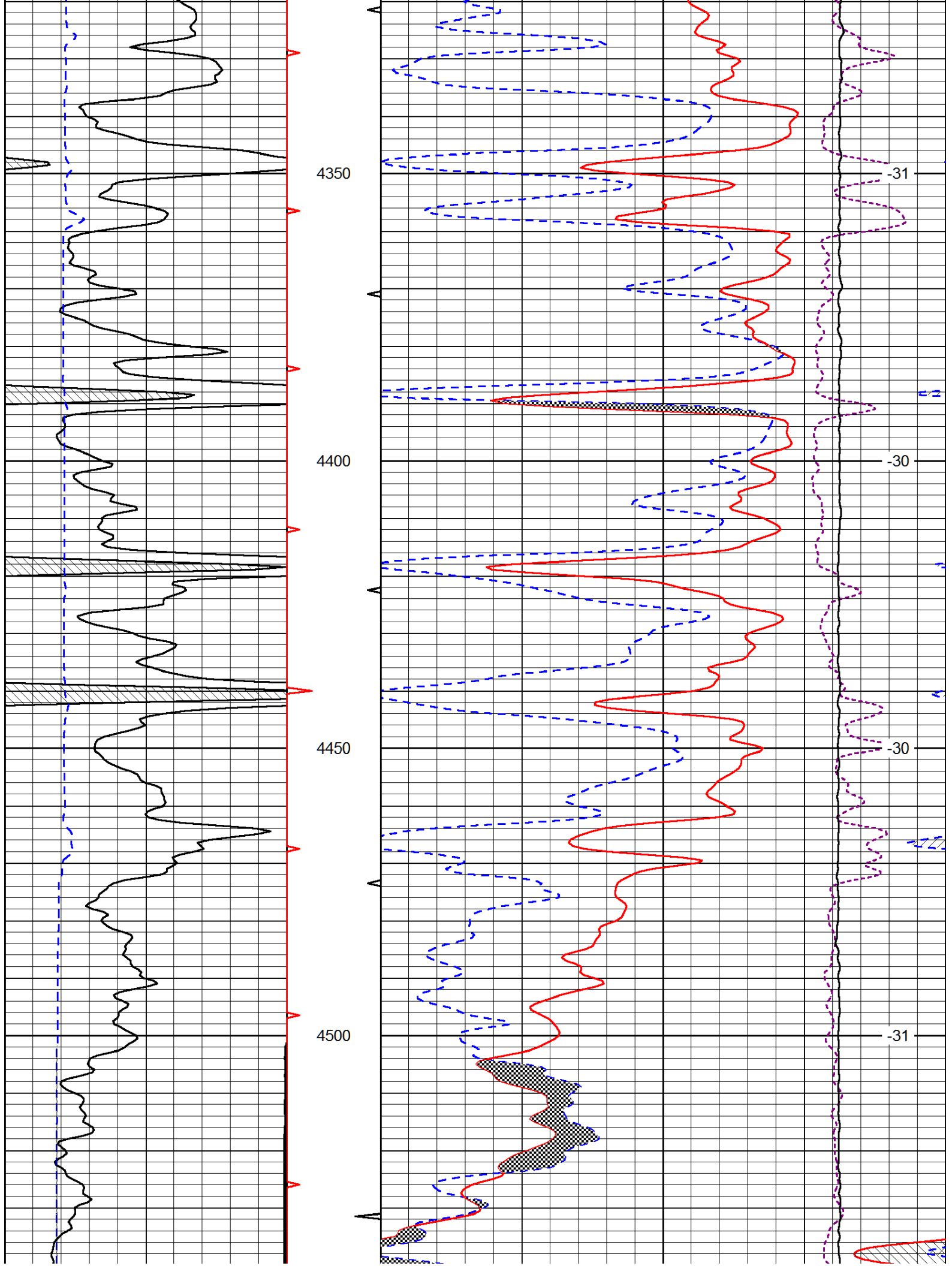


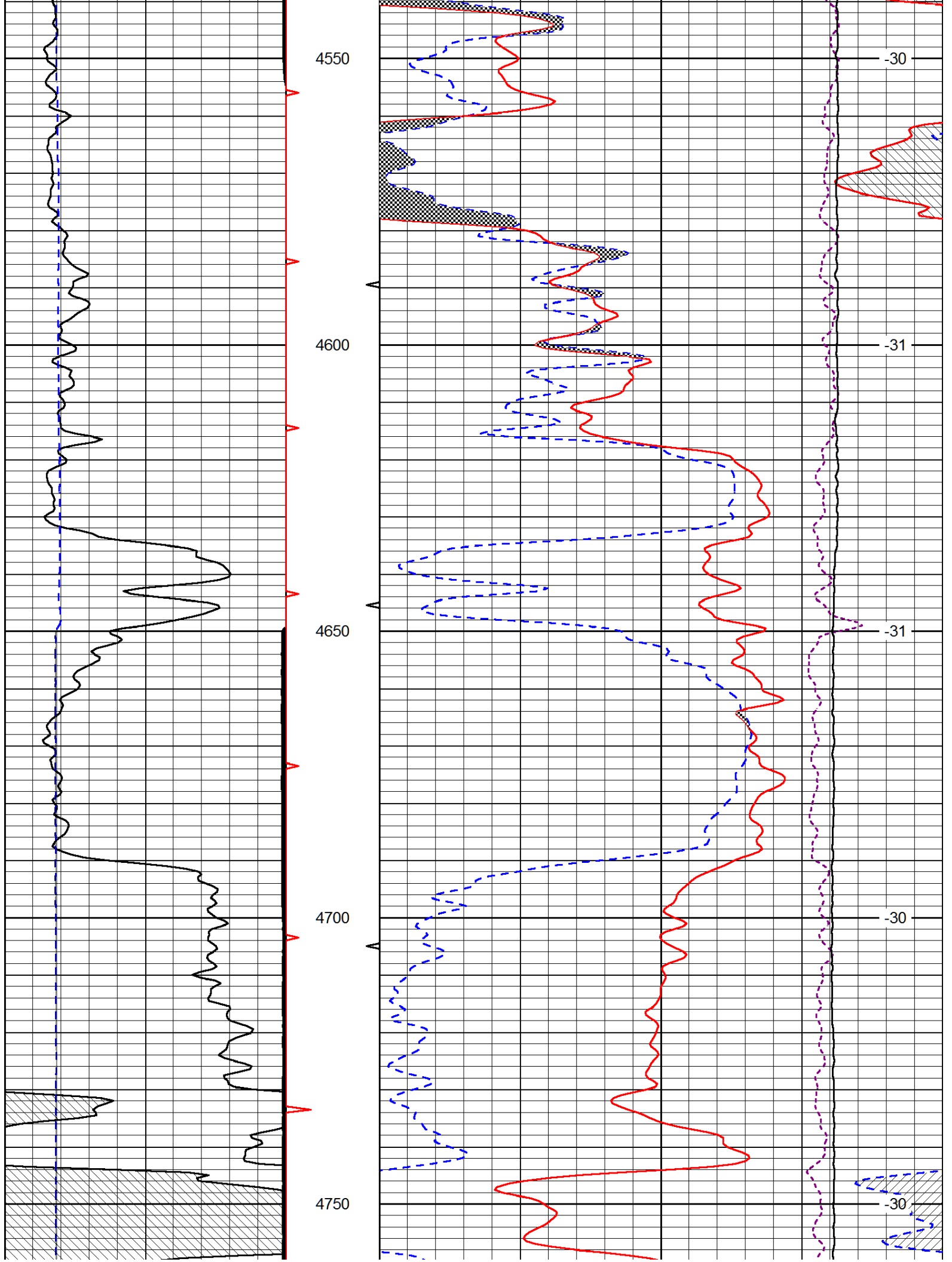


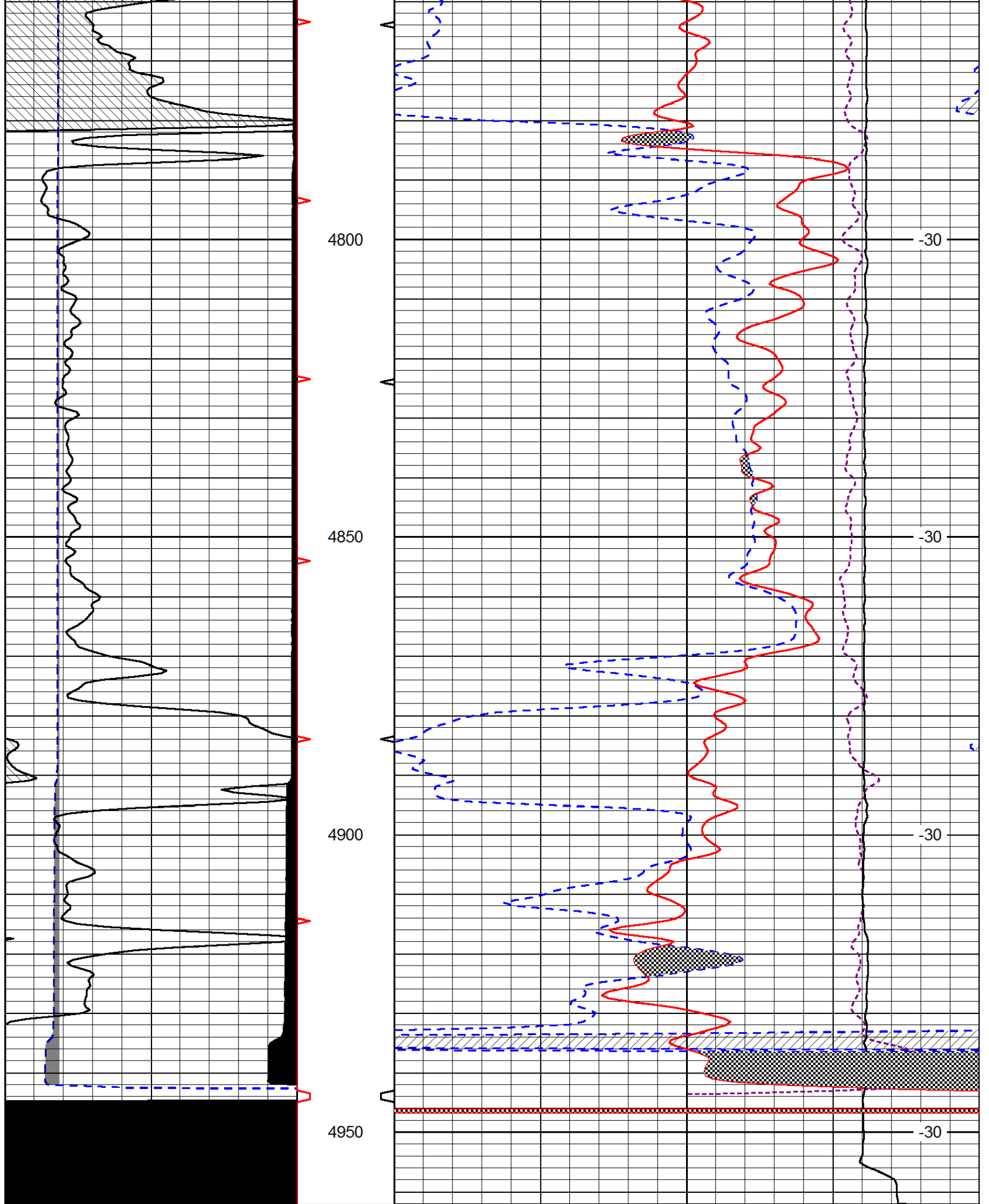












0	Gamma Ray (GAPI)	150
6	Caliper (in)	16

30	CNLS (pu)	-10
30	Compensated Density (2.71 ma) (pu)	-10
10000	Line Tension (lb)	0

-0.25 Correction (a/cc) 0.25

LSPD
(ft/min)