



Pioneer Energy Services

Dual Induction Log

15-007-23,976-00-00

API No.

Company **R & B Oil & Gas, Inc.**
 Well **Fischer-Crask No. 2**
 Field **Traffas East**
 County **Barber** State **Kansas**

Location
 SW NW SW
 1650' FSL & 330' FWL

Sec: 33 Twp: 32s Rge: 10W

Other Services
 CNL/CDL
 Elevation
 K.B. 1505
 D.F. 1495
 G.L. 1495

Date	12/21/2012		
Run Number	One		
Depth Driller	4960		
Depth Logger	4957		
Bottom Logged Interval	4956		
Top Log Interval	250		
Casing Driller	8.625 @ 265		
Casing Logger	266		
Bit Size	7.875		
Type Fluid in Hole	Chemical		
Salinity, ppm CL	4,000		
Density / Viscosity	9.3 51		
pH / Fluid Loss	9.5 9.6		
Source of Sample	Flowline		
Rm @ Meas. Temp	.55 @ 64		
Rmf @ Meas. Temp	.41 @ 64		
Rmc @ Meas. Temp	.74 @ 64		
Source of Rmf / Rmc	Charts		
Rm @ BHT	.28 @ 126		
Operating Rig Time	3 1/2 Hours		
Max Rec. Temp. F	126		
Equipment Number	108		
Location	Hays		
Recorded By	D. Martin		
Witnessed By	Tim Pierce		

<<< Fold Here >>>

All interpretations are opinions based on inferences from electrical or other measurements and we cannot and do not guarantee the accuracy or correctness of any interpretation, and we shall not, except in the case of gross or willful negligence on our part, be liable or responsible for any loss, costs, damages, or expenses incurred or sustained by anyone resulting from any interpretation made by any of our officers, agents or employees. These interpretations are also subject to our general terms and conditions set out in our current Price Schedule.

Comments

Thank you for using Log-Tech, Inc.
 (785) 625-3858

Sharon, KS
 W Edge, 2 1/2 S, E Into

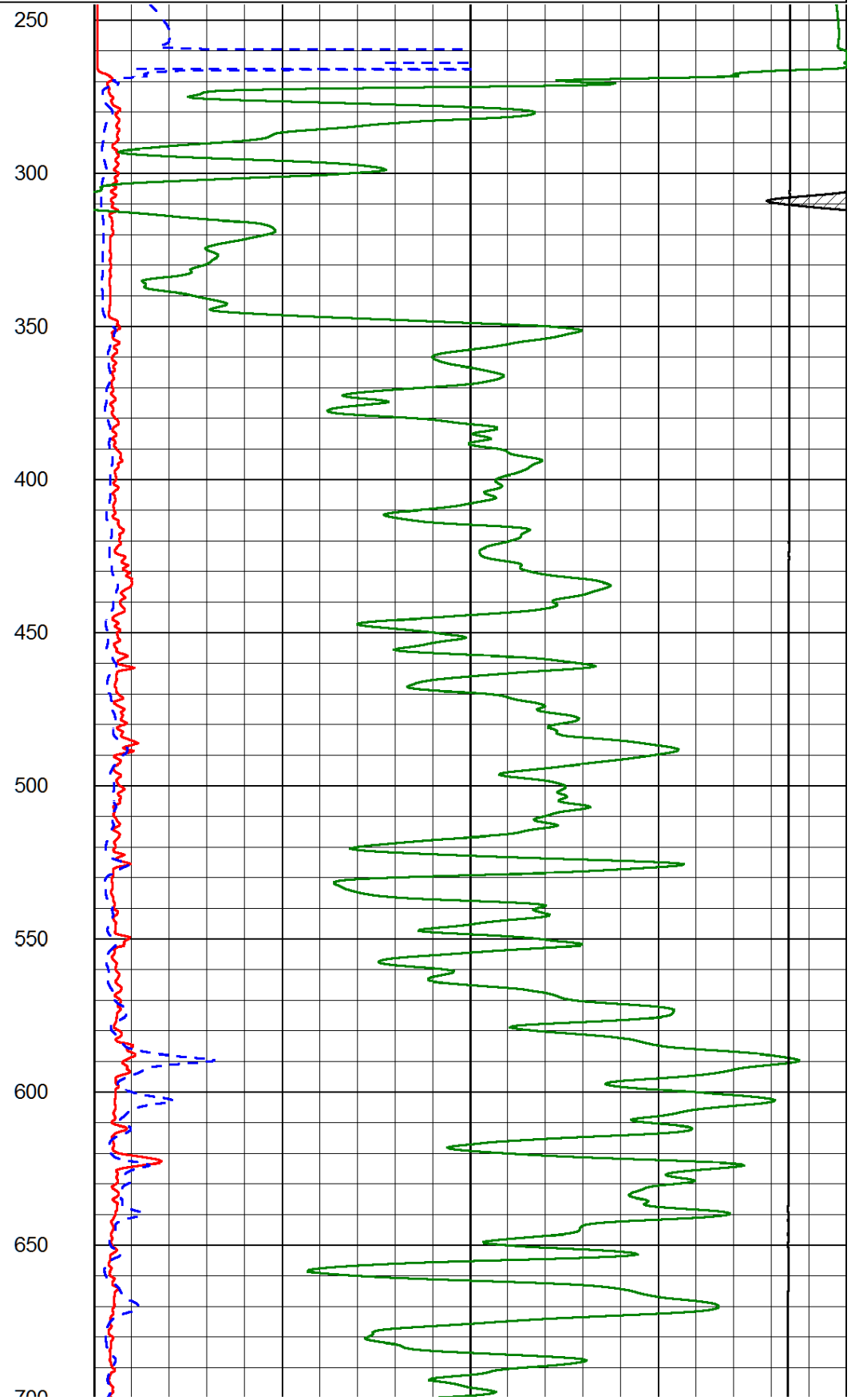
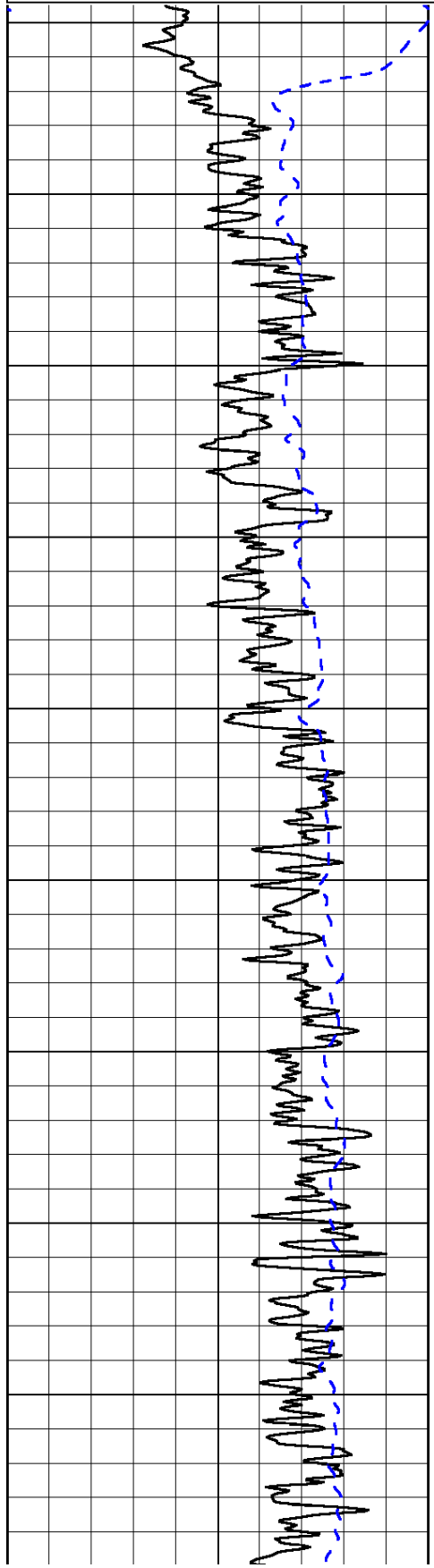
Database File: r&bhd.db
 Dataset Pathname: DIL/rbstk
 Presentation Format: dil2in
 Dataset Creation: Fri Dec 21 16:07:30 2012
 Charted by: Depth in Feet scaled 1:600

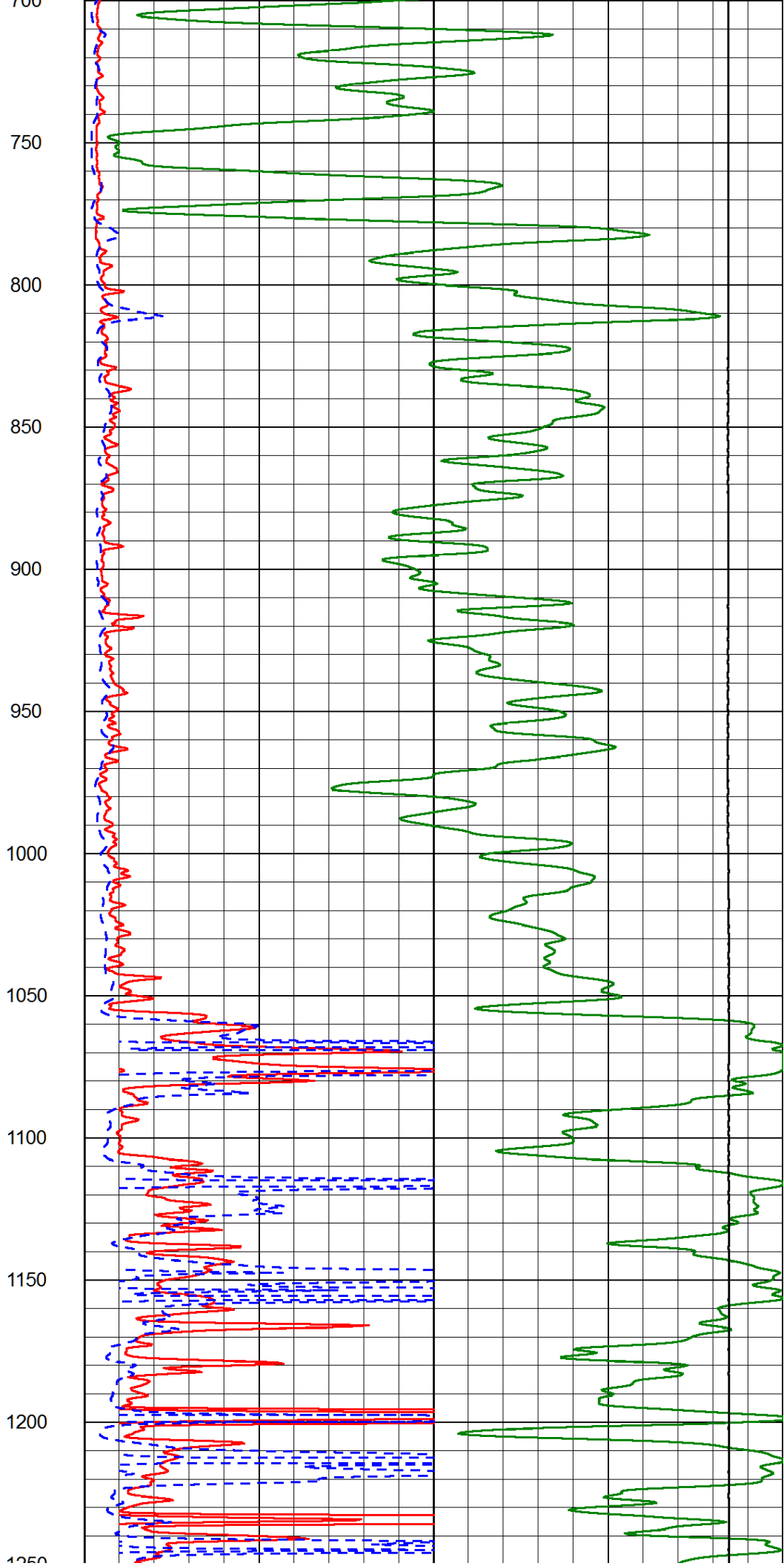
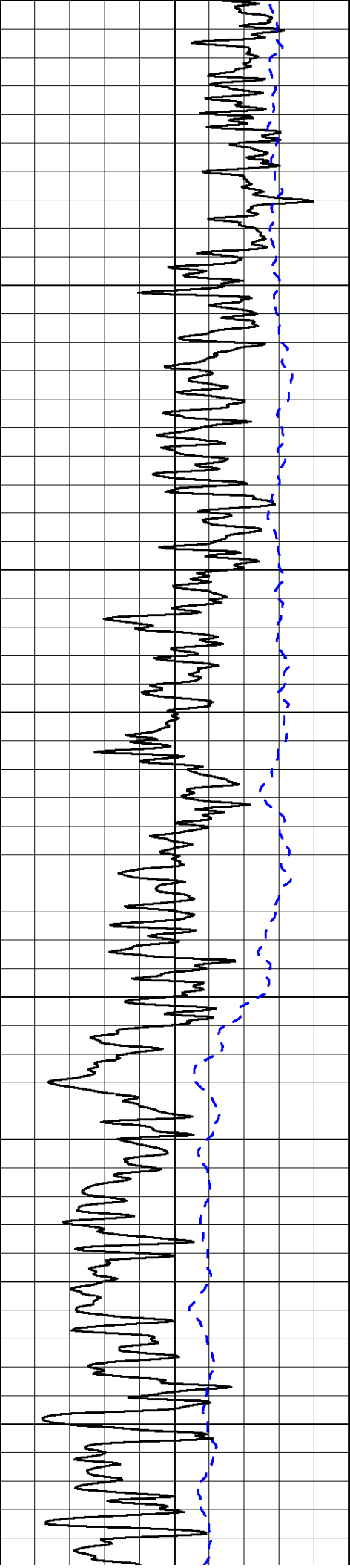
0	Gamma Ray (GAPI)	150
-200	SP (mV)	0

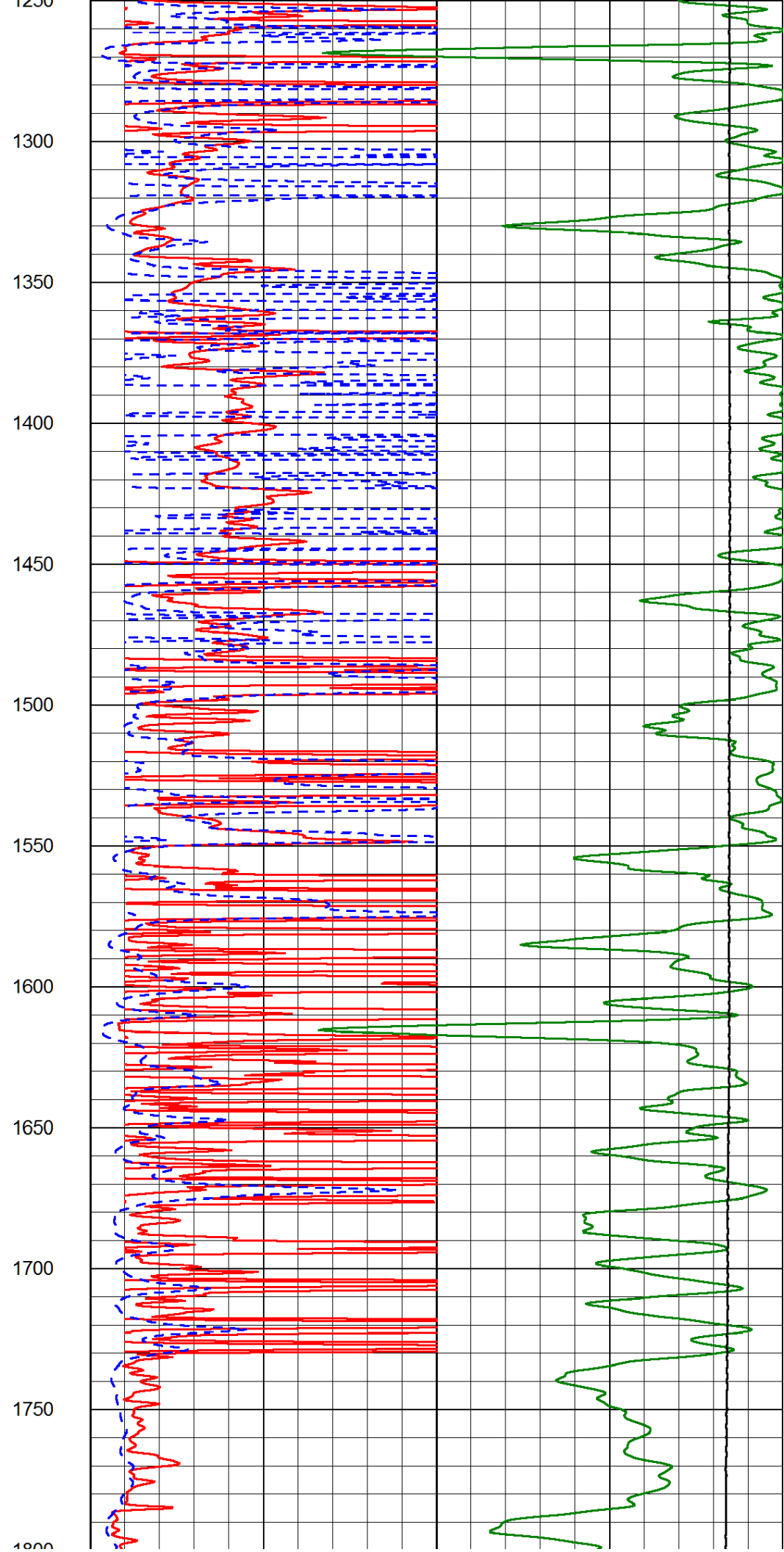
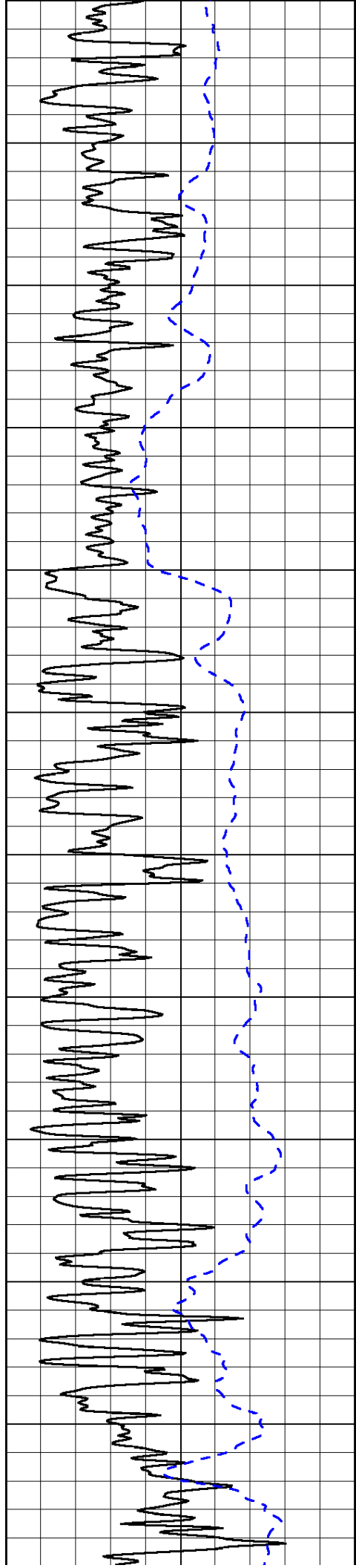
0	Shallow Resistivity (Ohm-m)	50
0	Deep Resistivity (Ohm-m)	50

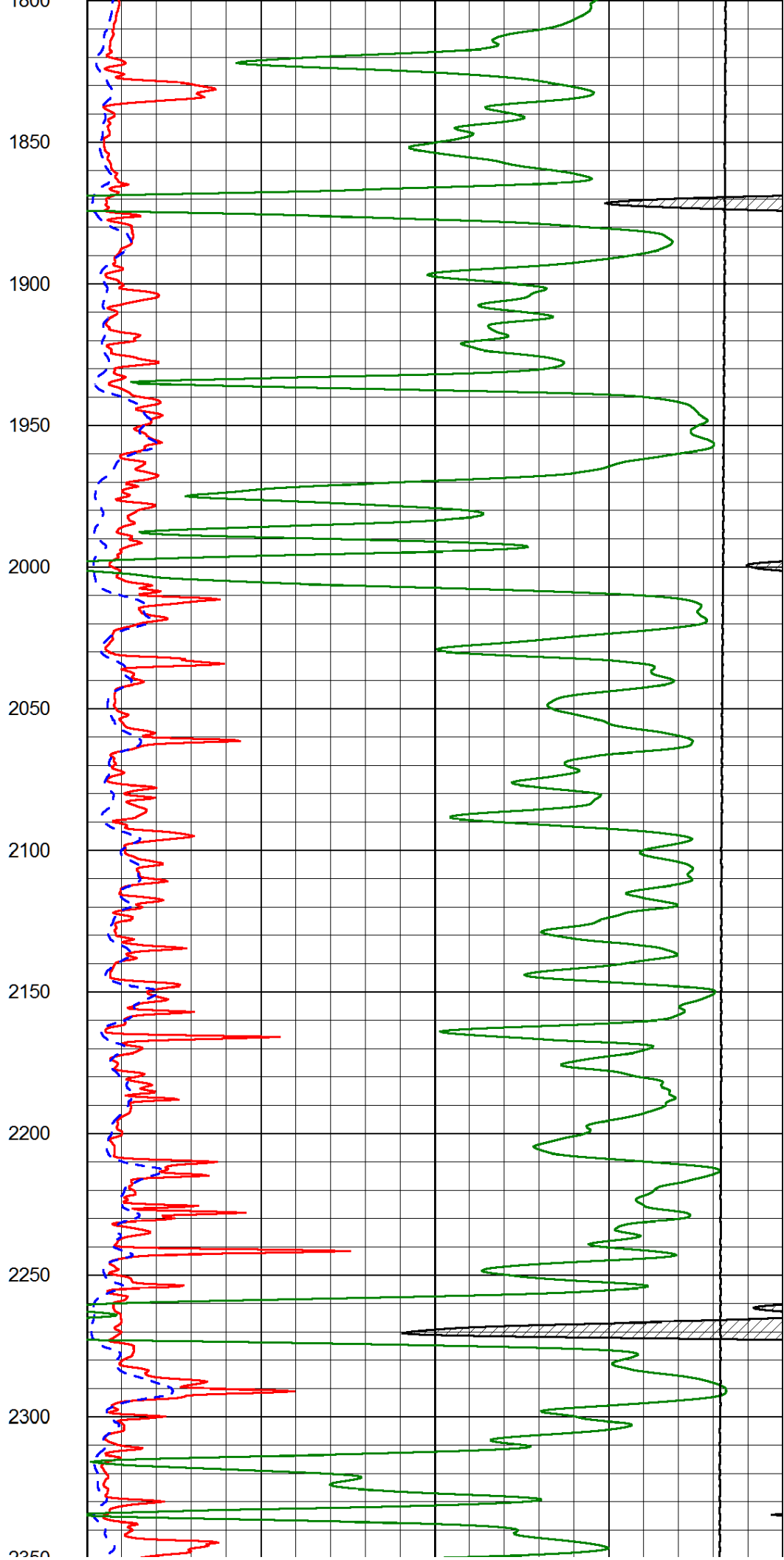
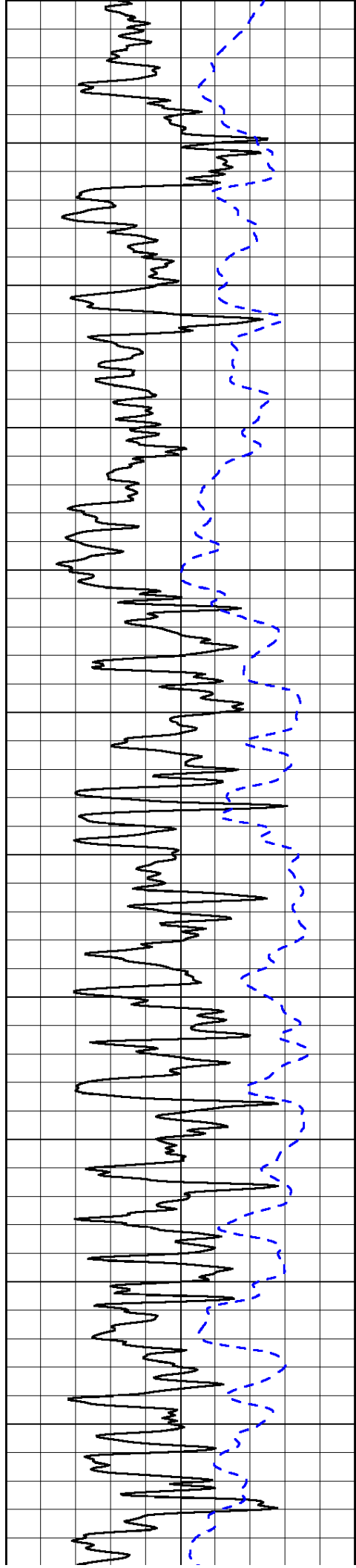
1000	Conductivity (Ohm-m)	0
15000	Line Tension (lb)	0

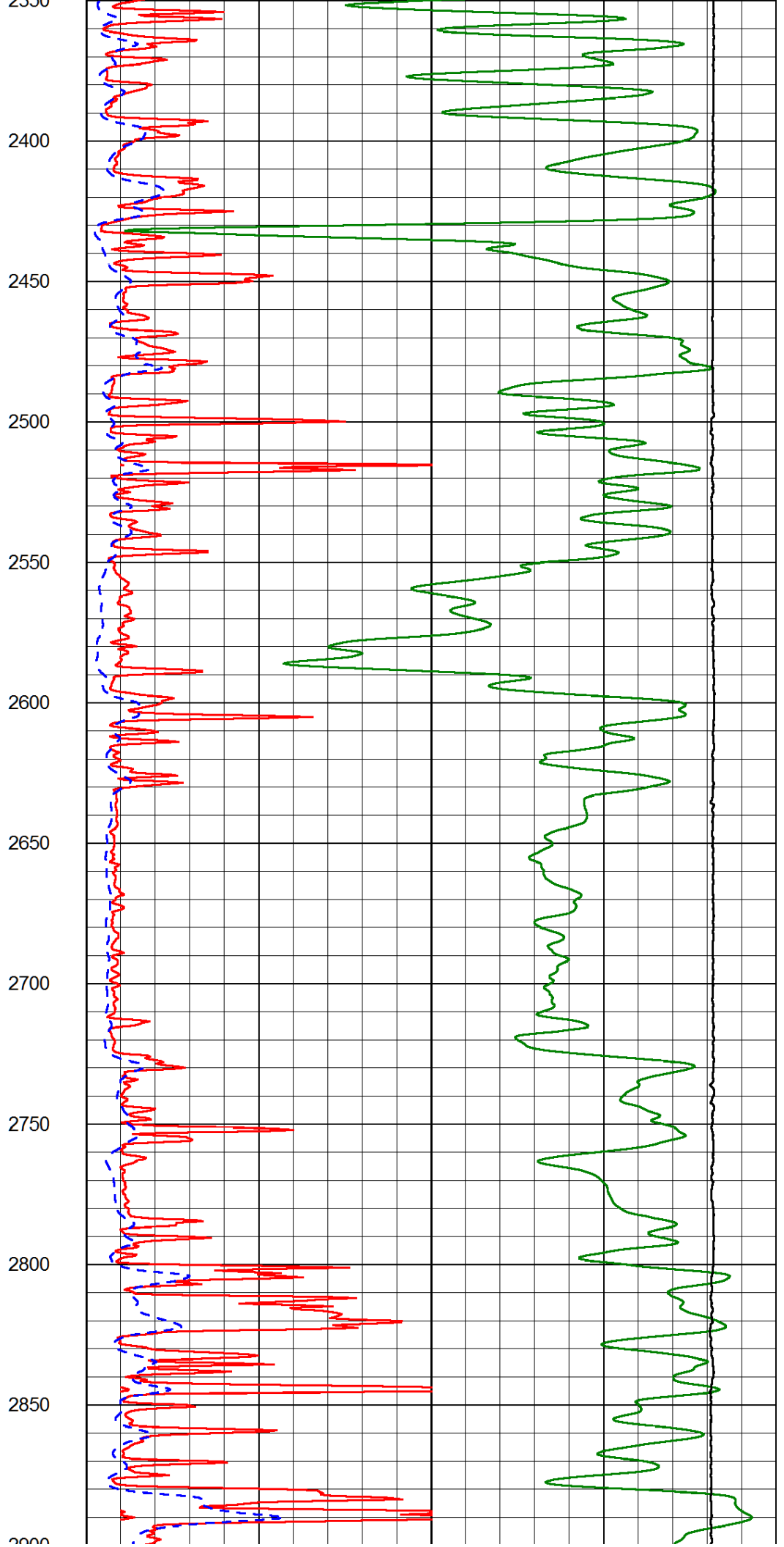
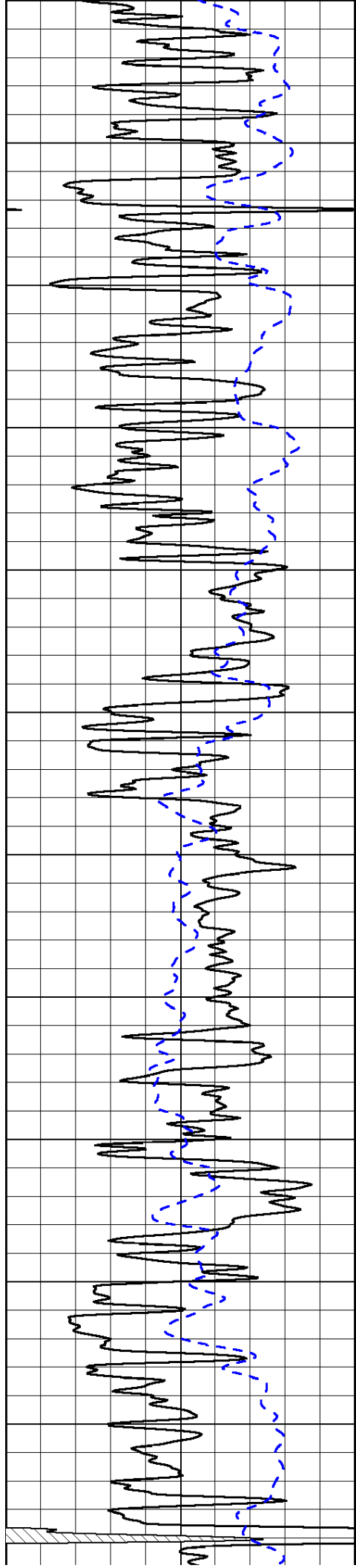
Shallow Resistivity		
50	(Ohm-m)	500
50	Deep Resistivity (Ohm-m)	500

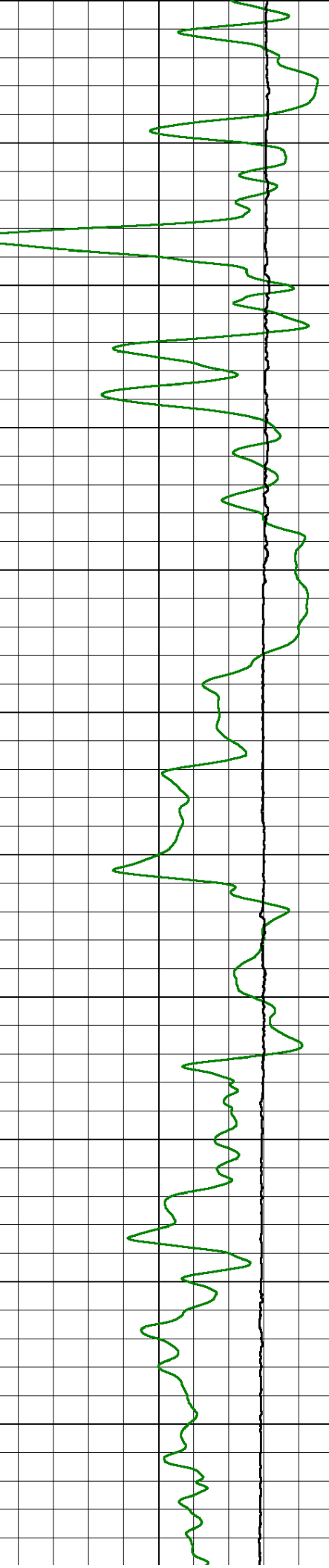
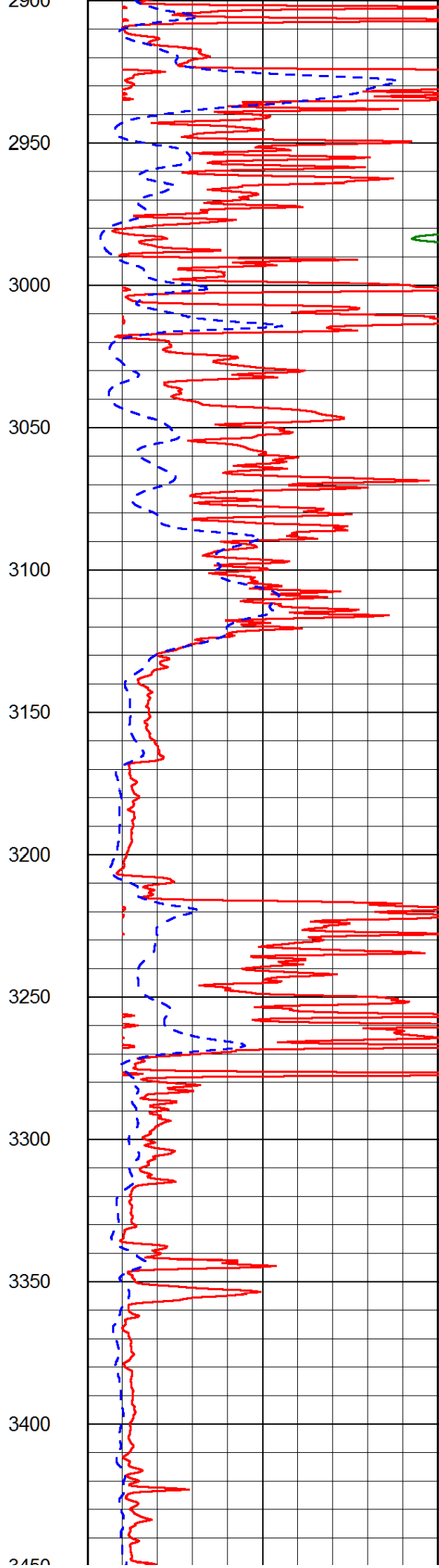
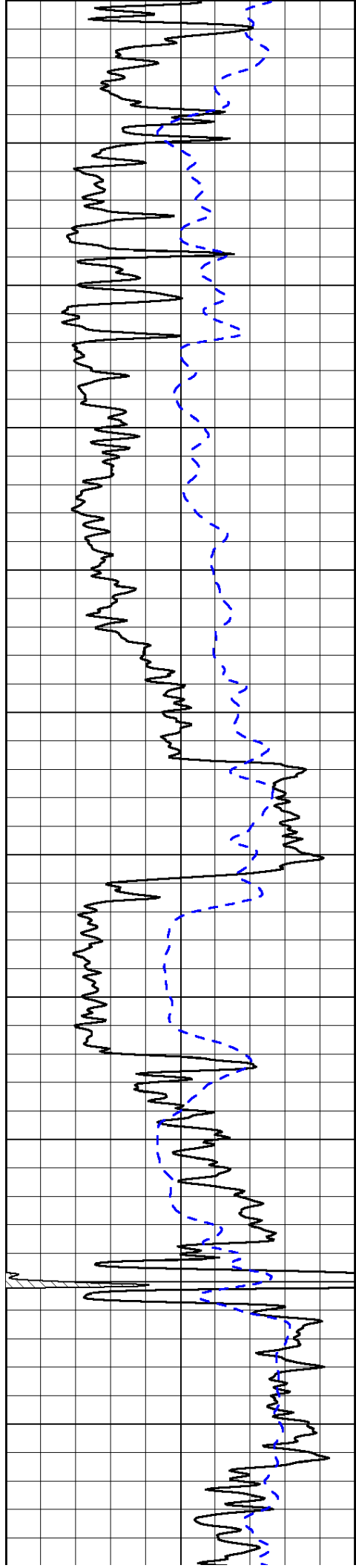


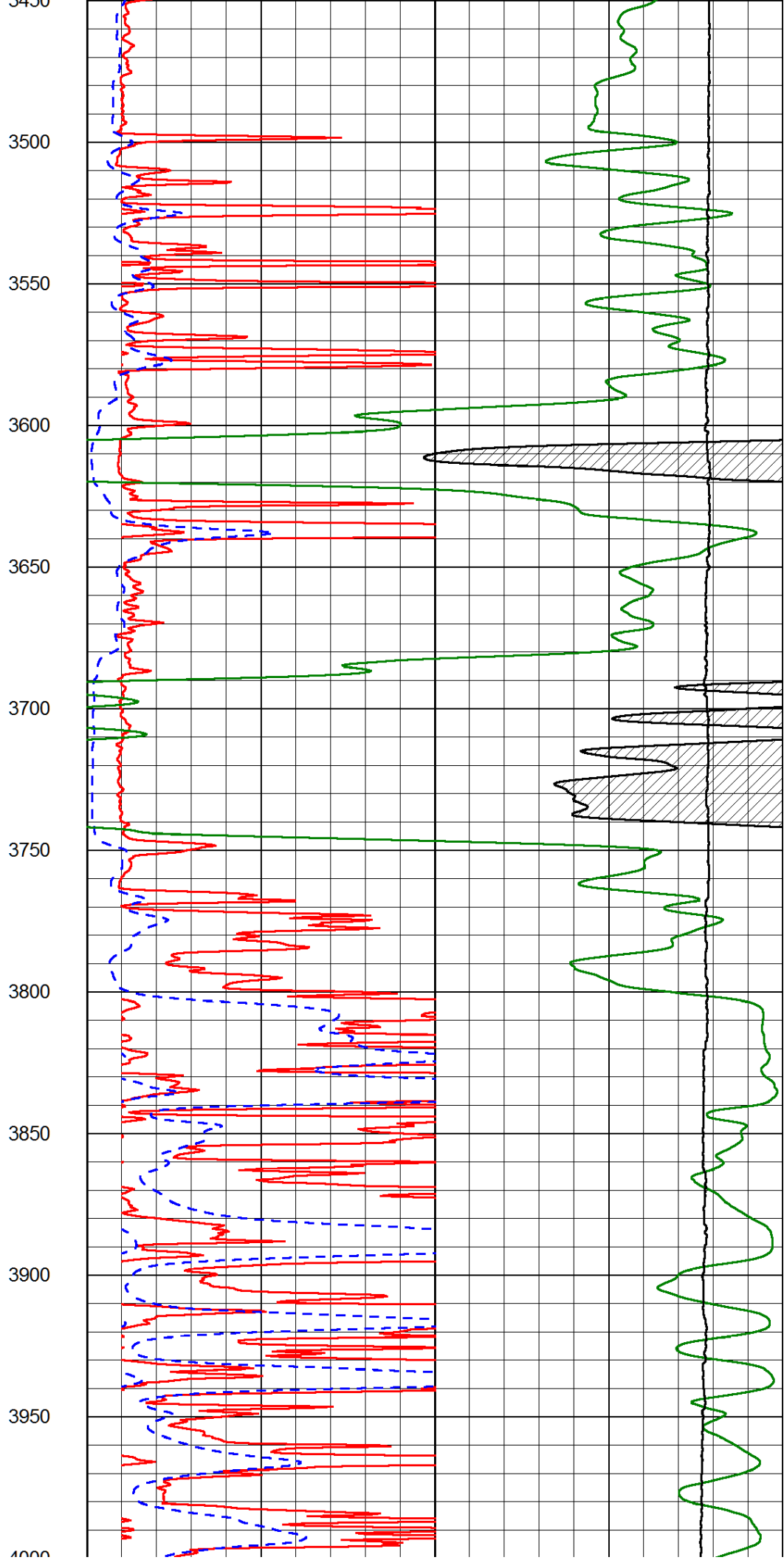
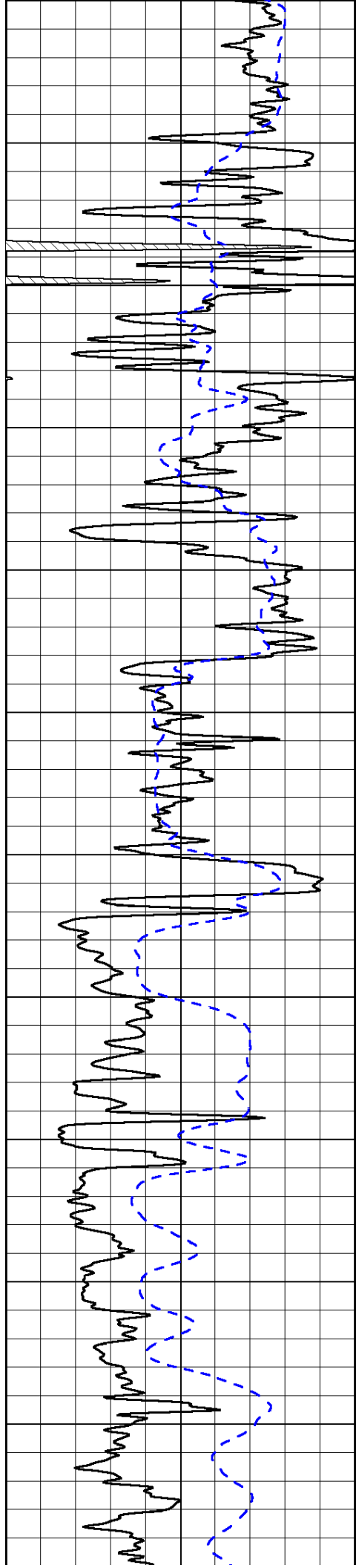


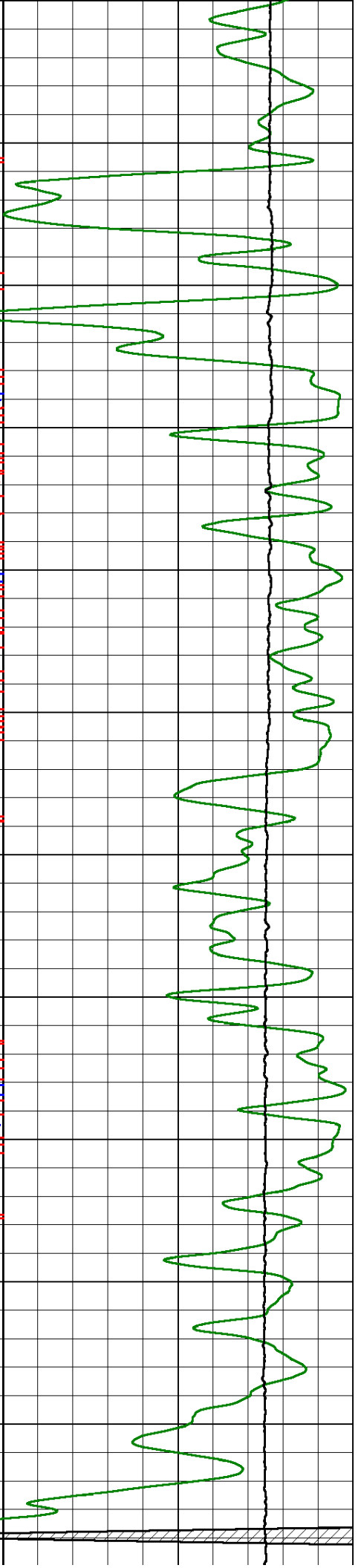
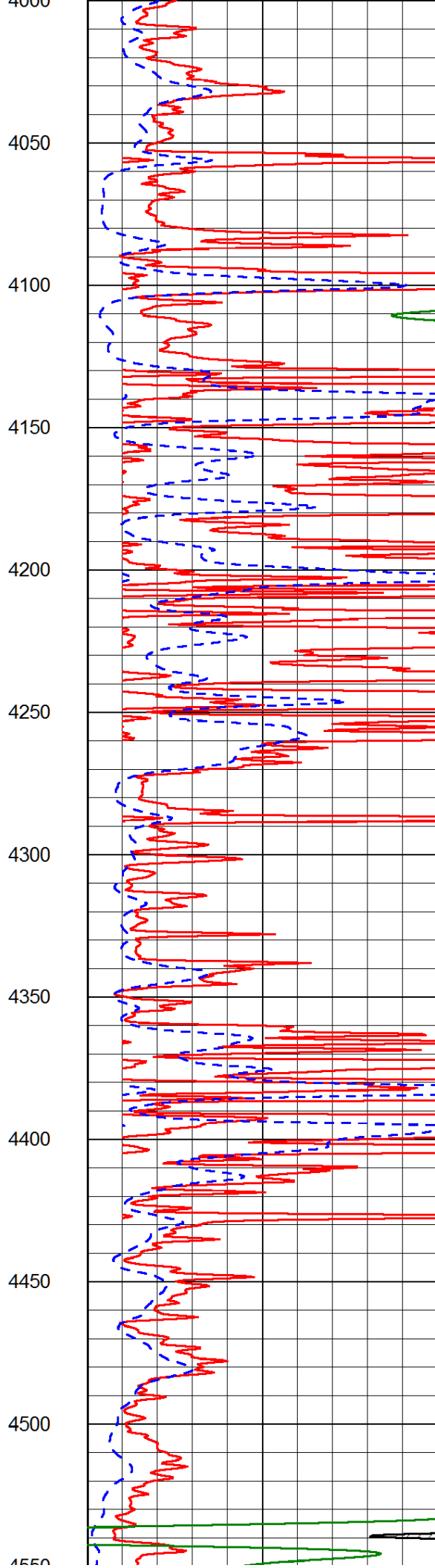
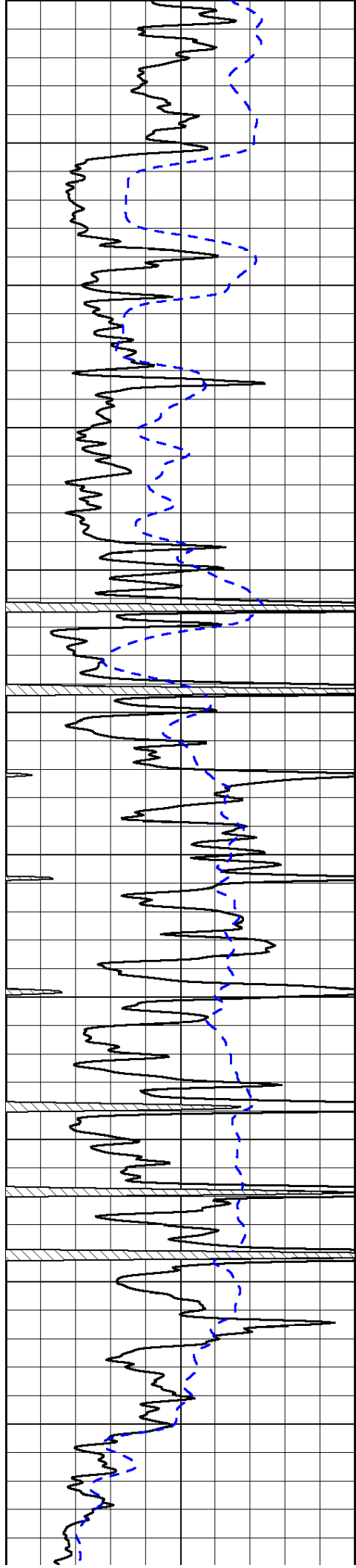


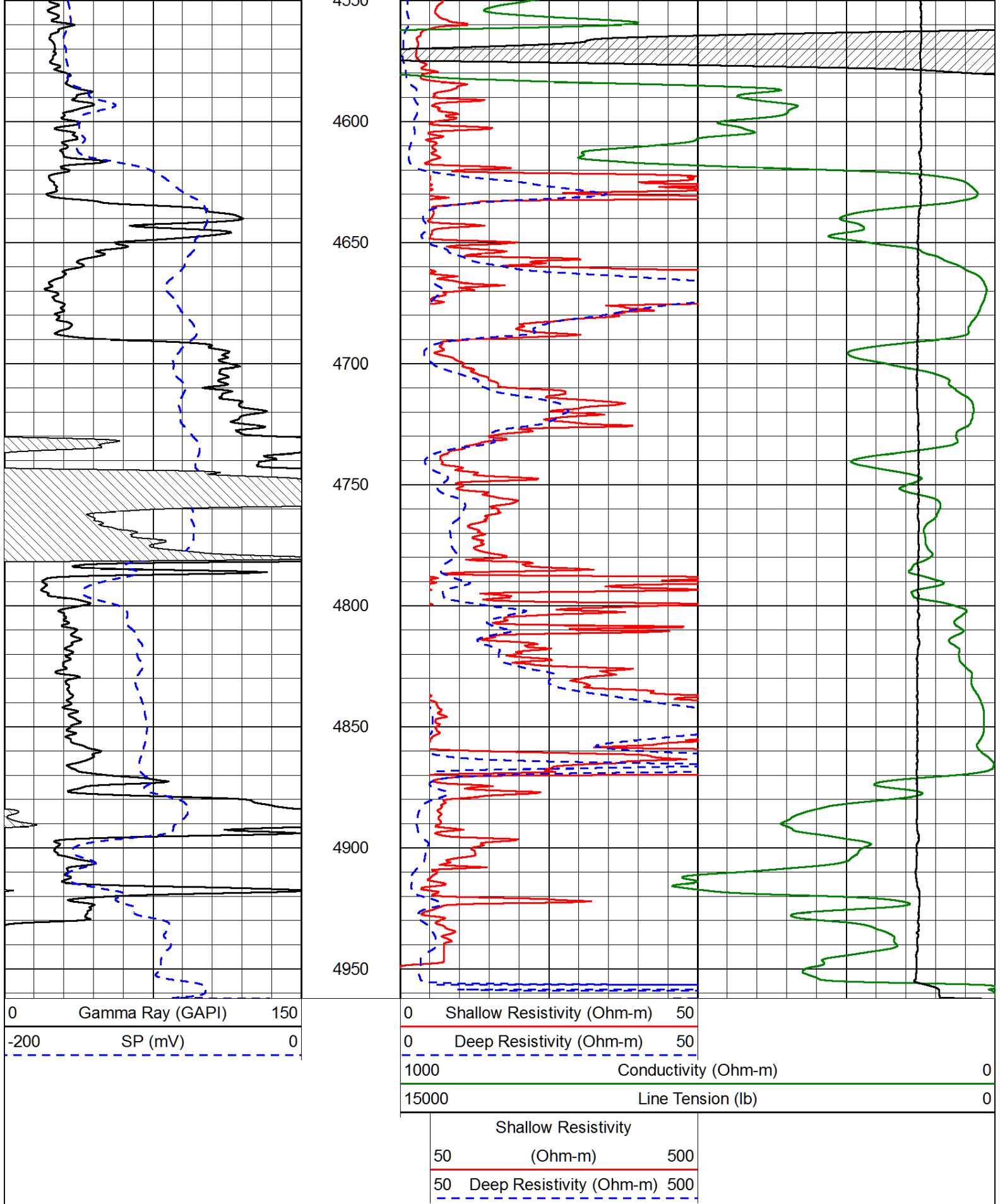










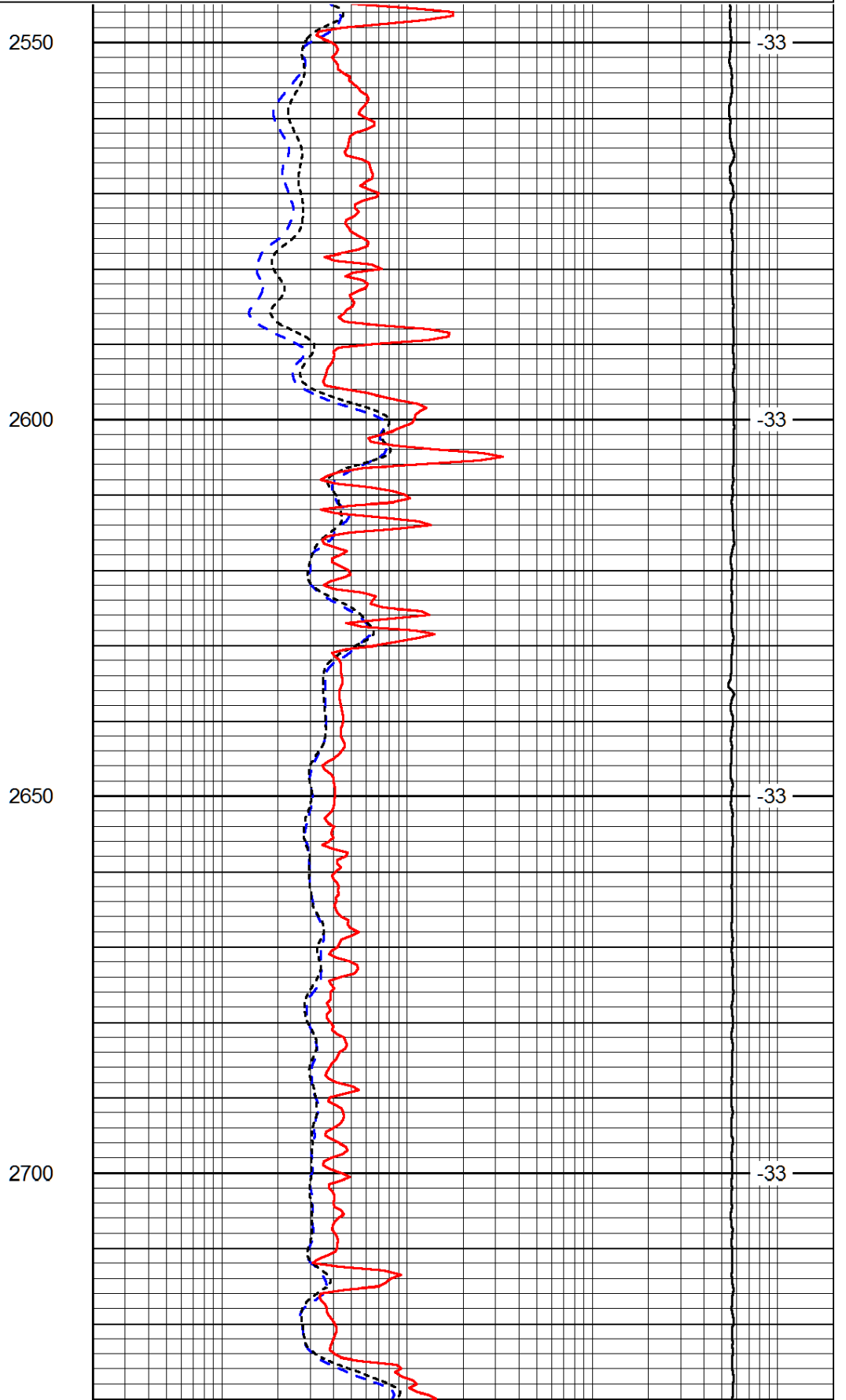
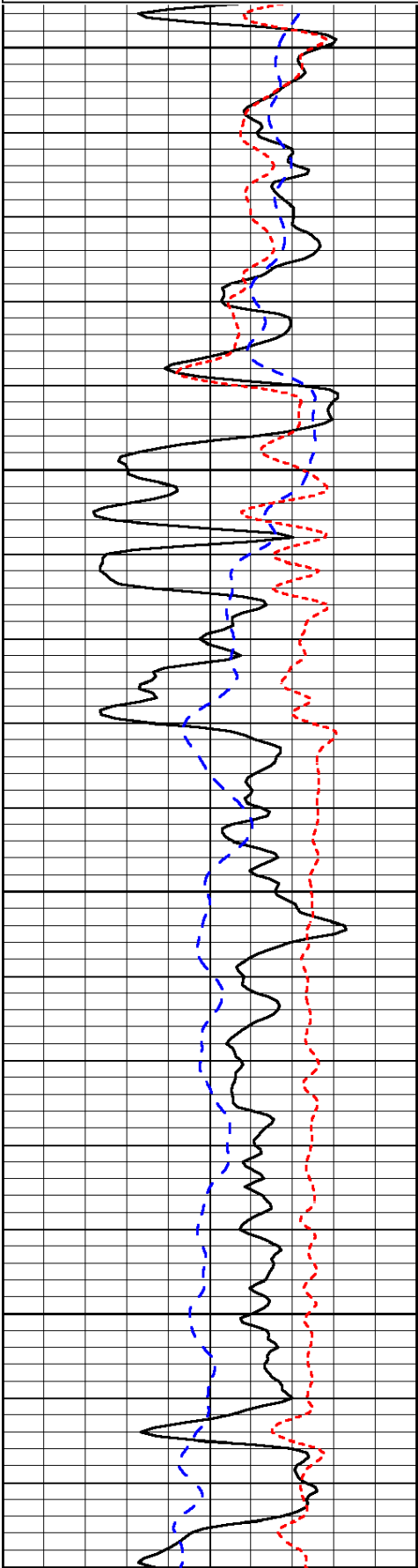


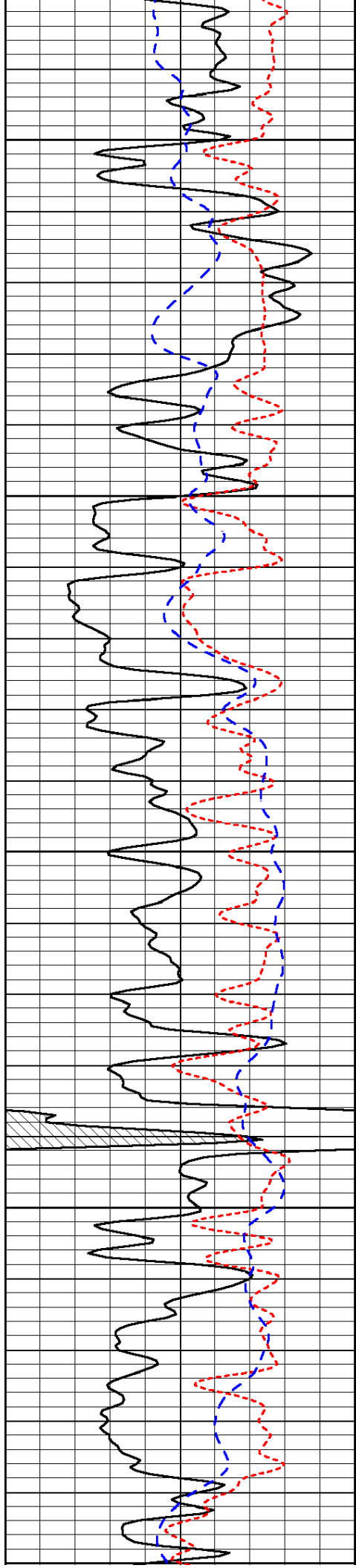
Database File: r&bhd.db
 Dataset Pathname: DIL/rbstk
 Presentation Format: dil
 Dataset Creation: Fri Dec 21 16:07:30 2012

0	Gamma Ray (GAPI)	150
-160	RXO/RT	40
-200	SP (mV)	0

0.2	Deep Resistivity (Ohm-m)	2000
0.2	Medium Resistivity (Ohm-m)	2000
0.2	Shallow Resistivity (Ohm-m)	2000
10000	Line Tension (lb)	0

LSPD
(ft/min)





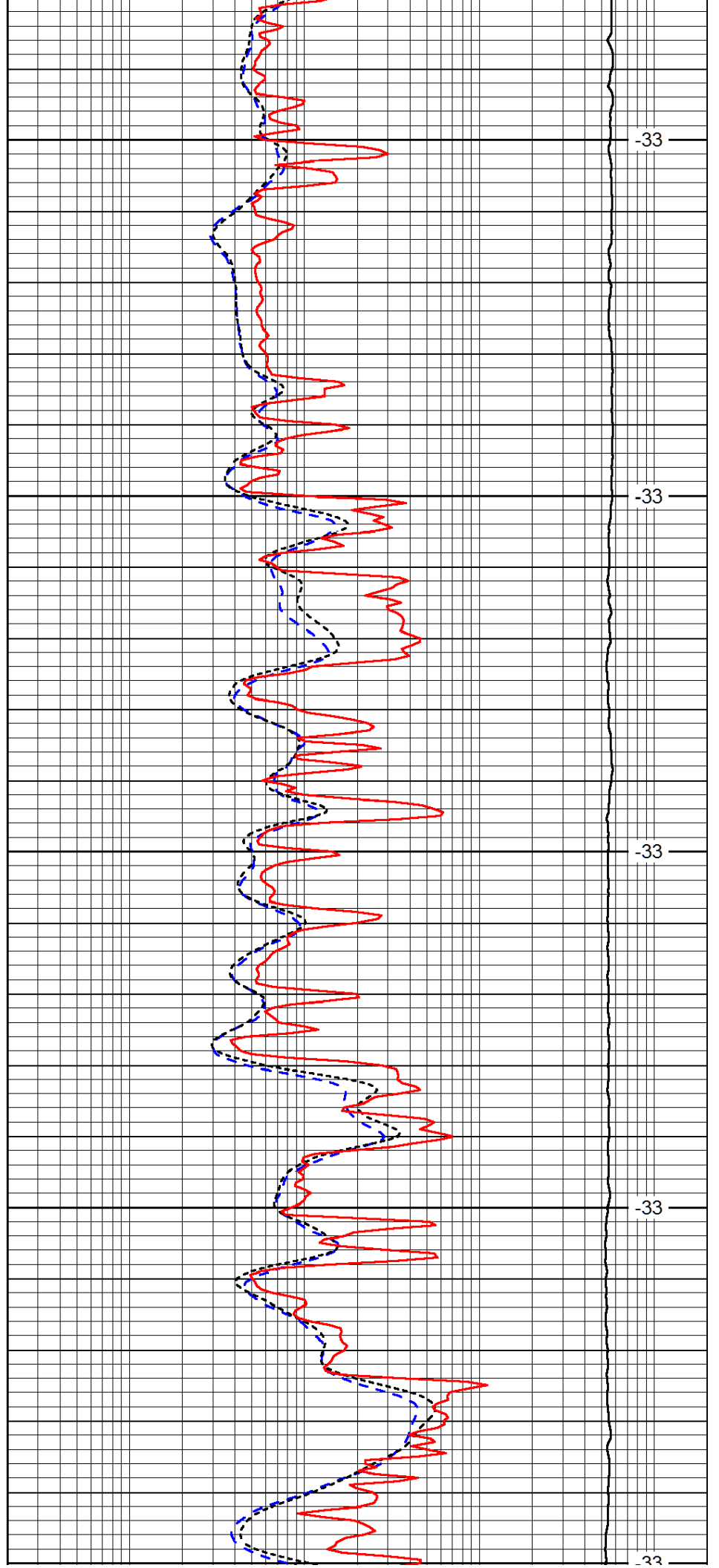
2750

2800

2850

2900

2950



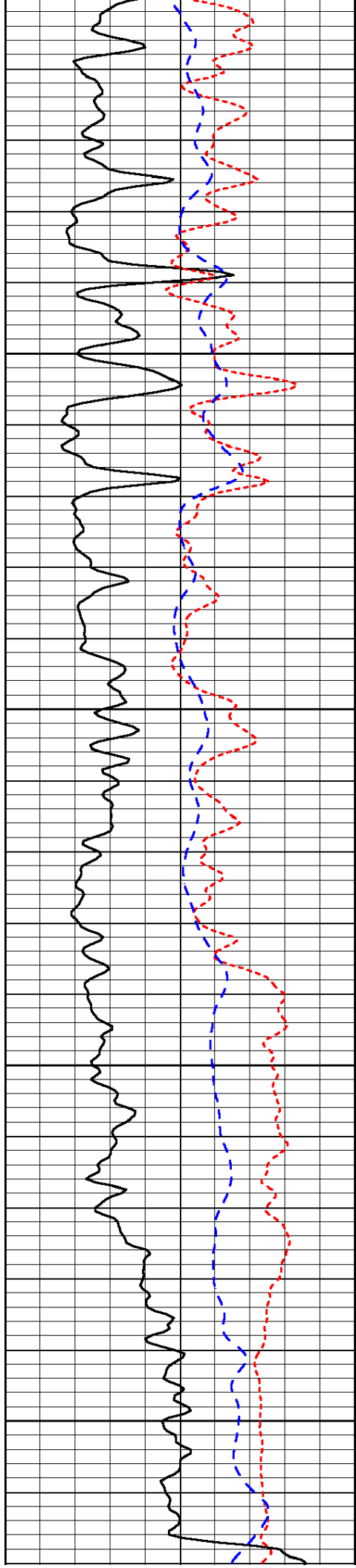
-33

-33

-33

-33

-33



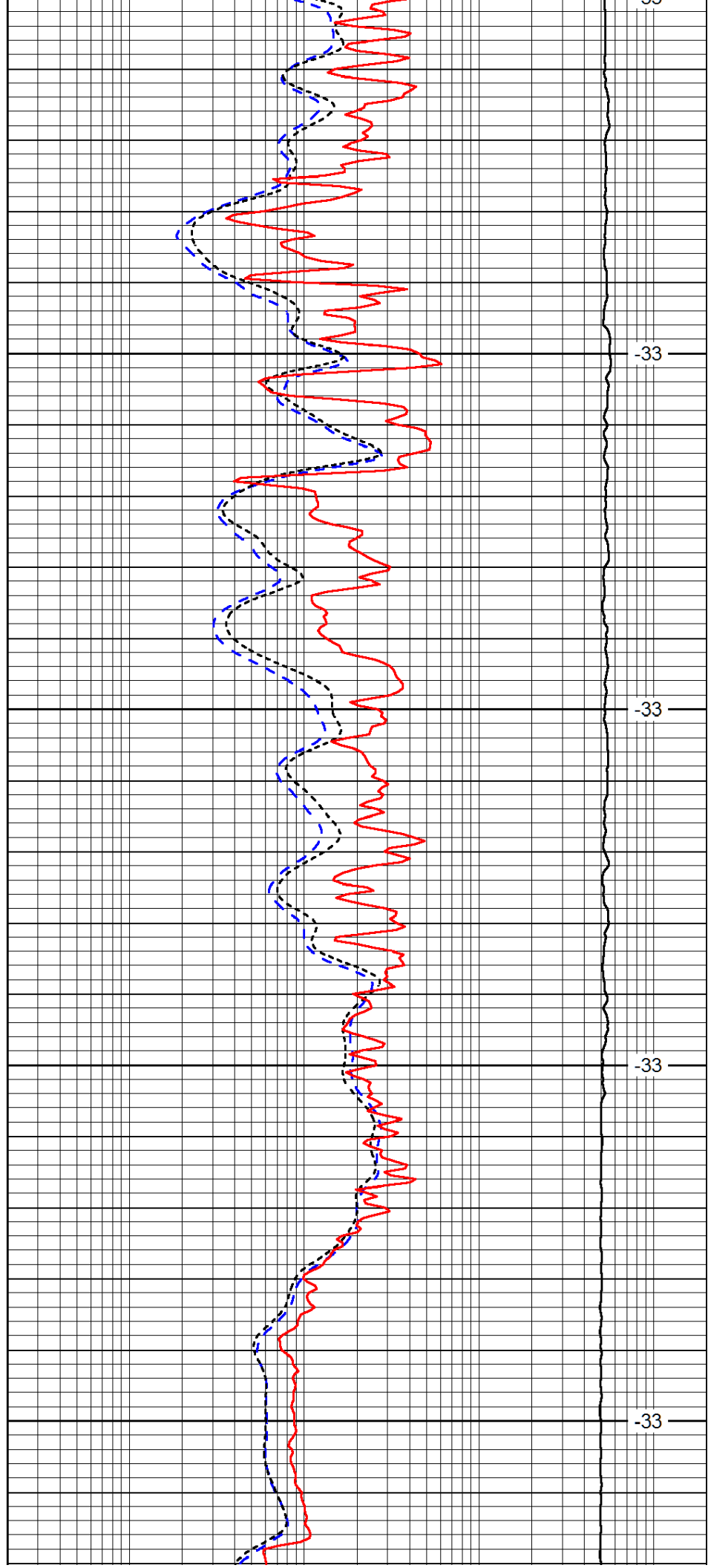
2550

3000

3050

3100

3150



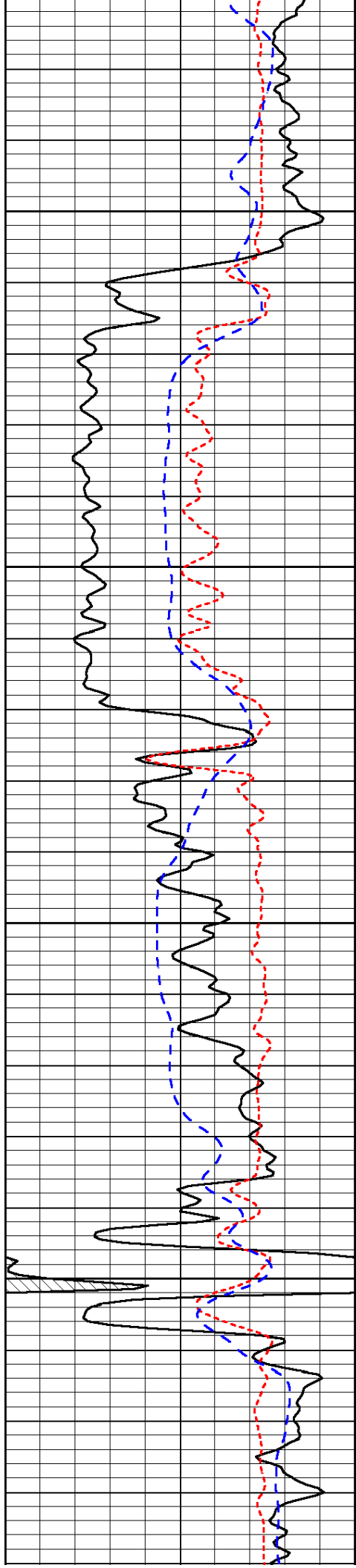
2550

3000

3050

3100

3150

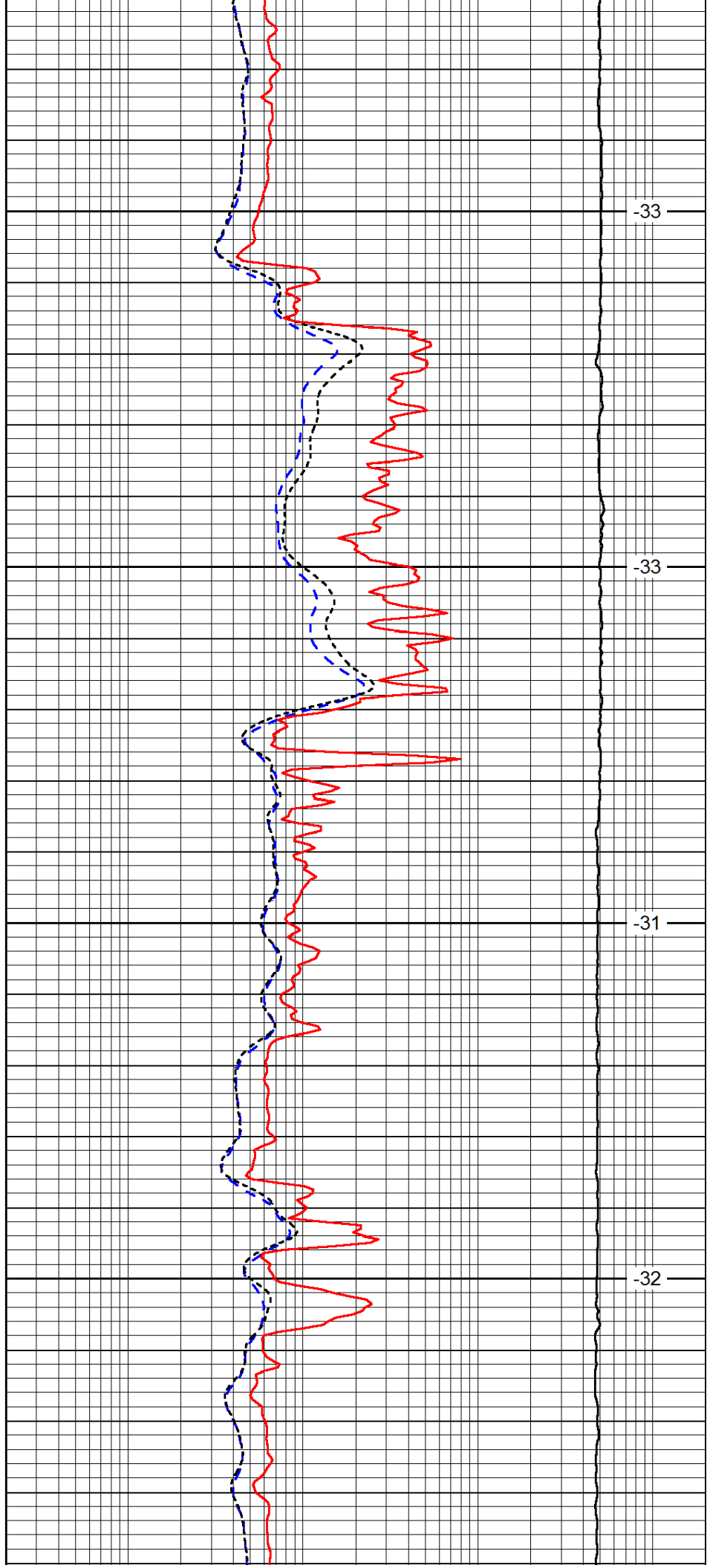


3200

3250

3300

3350

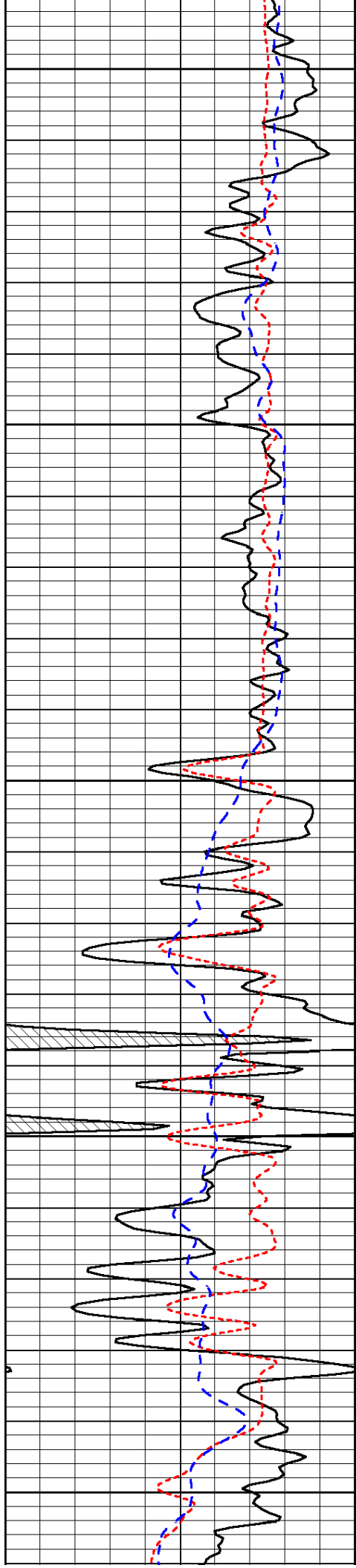


-33

-33

-31

-32



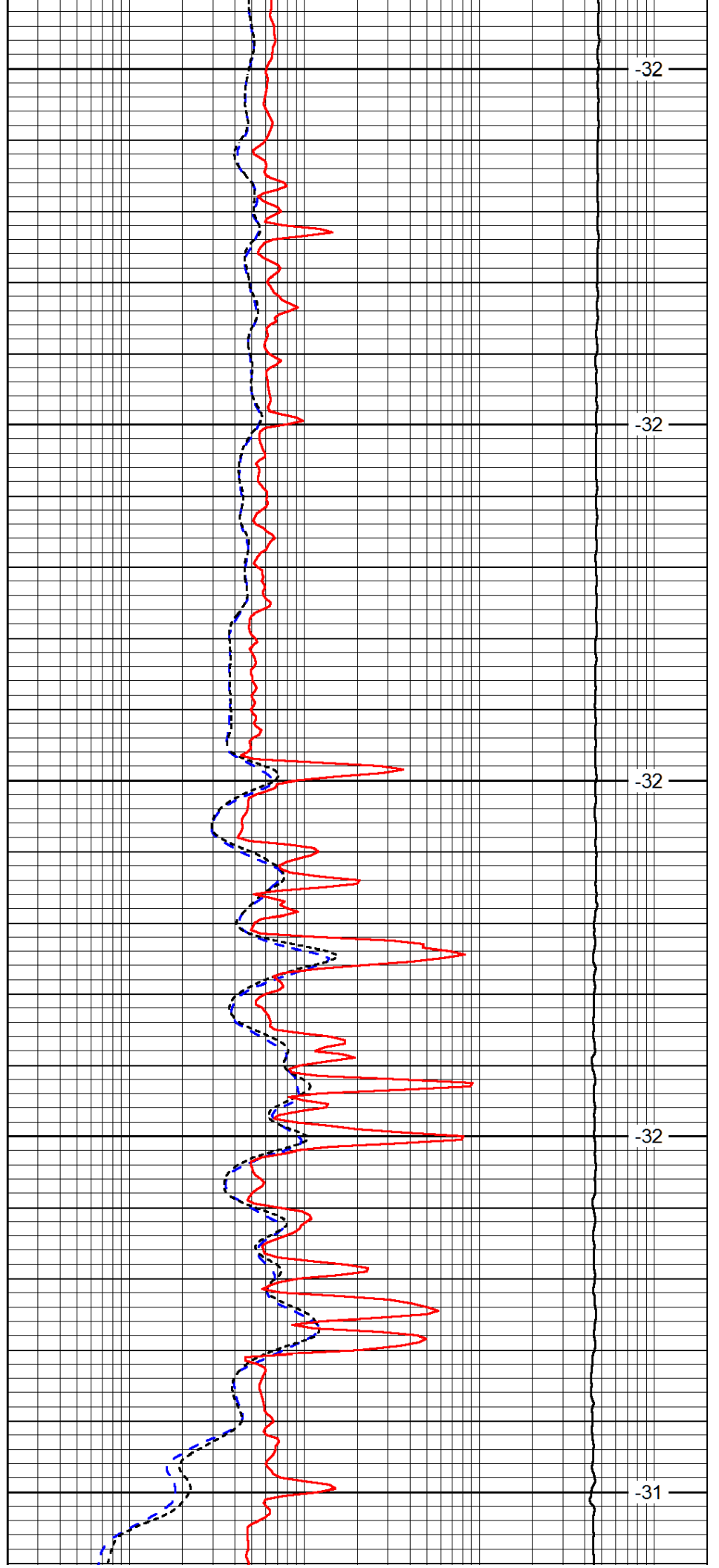
3400

3450

3500

3550

3600



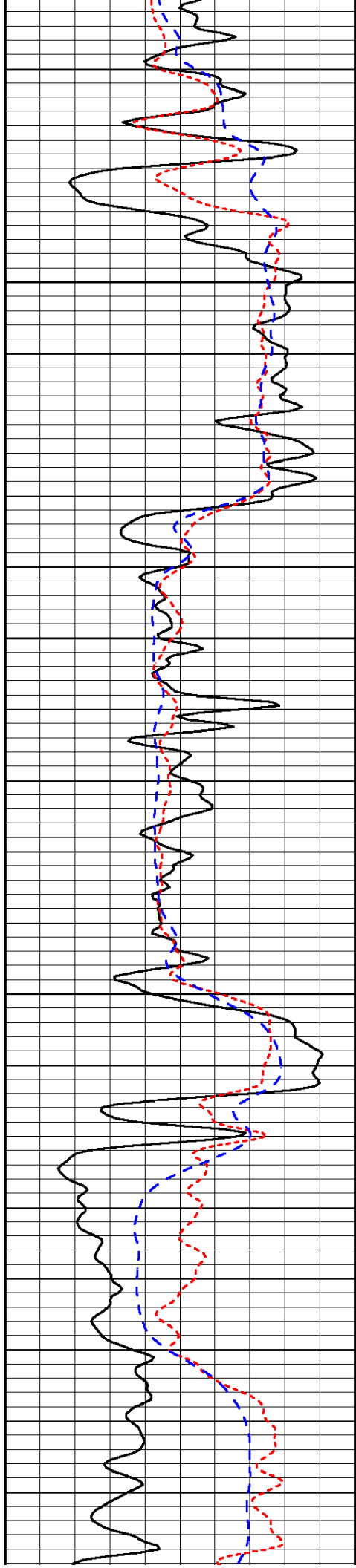
-32

-32

-32

-32

-31

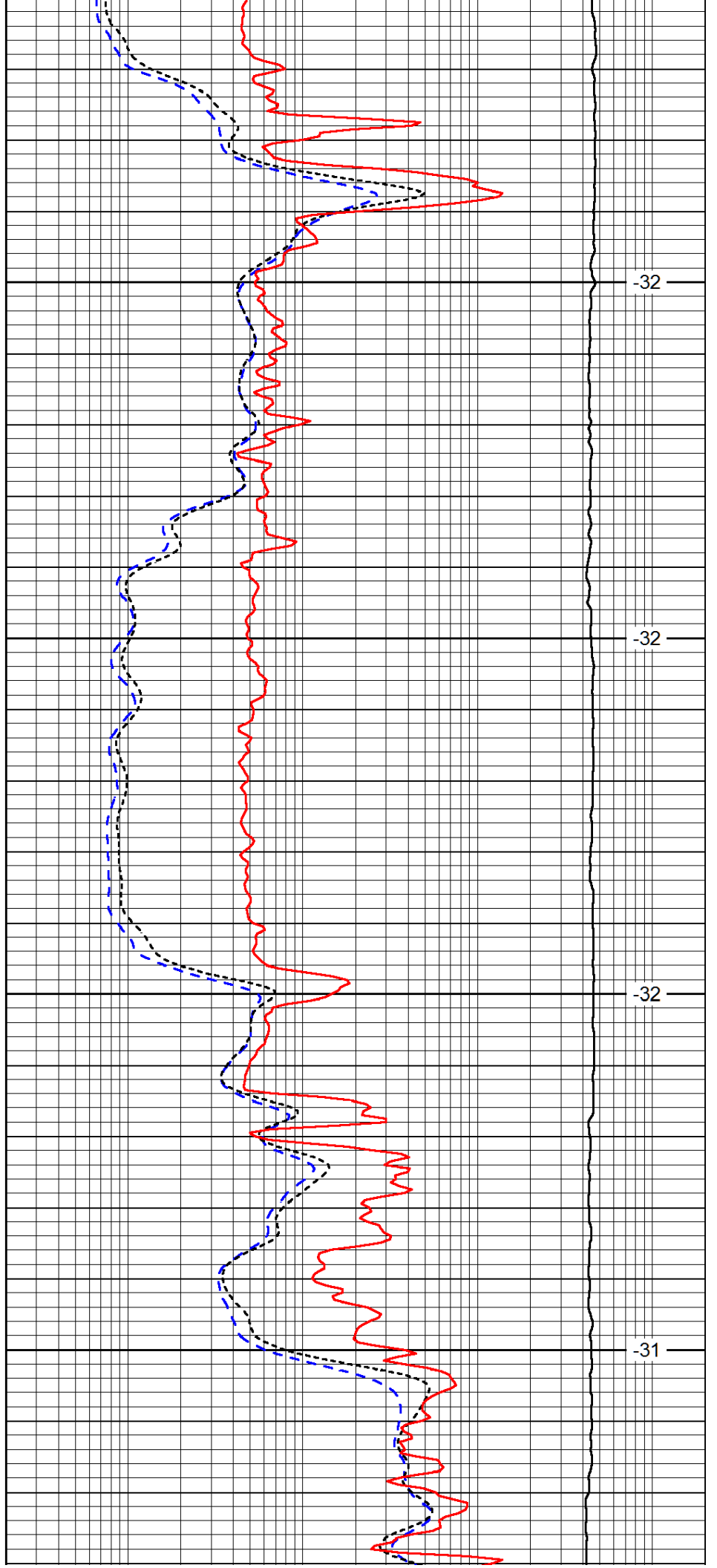


3650

3700

3750

3800

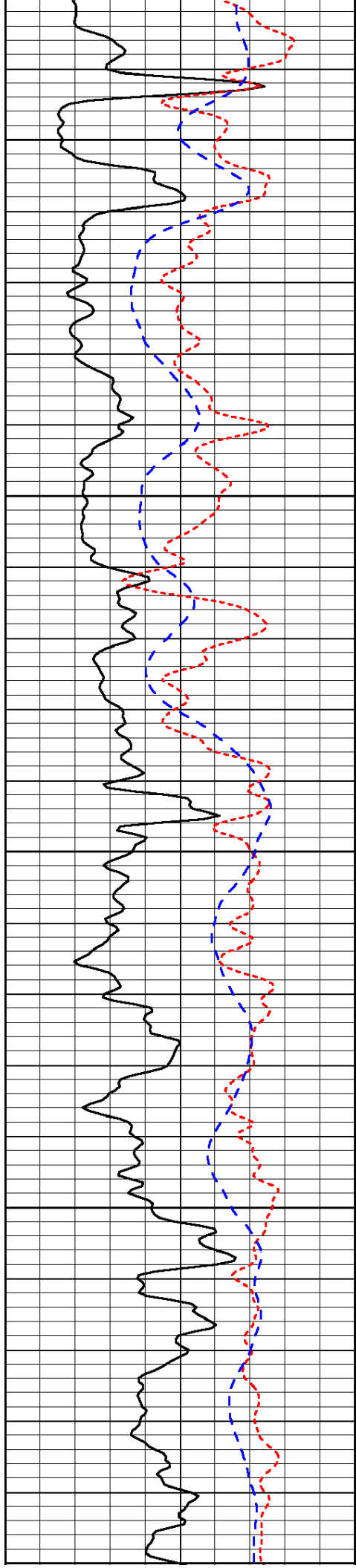


-32

-32

-32

-31



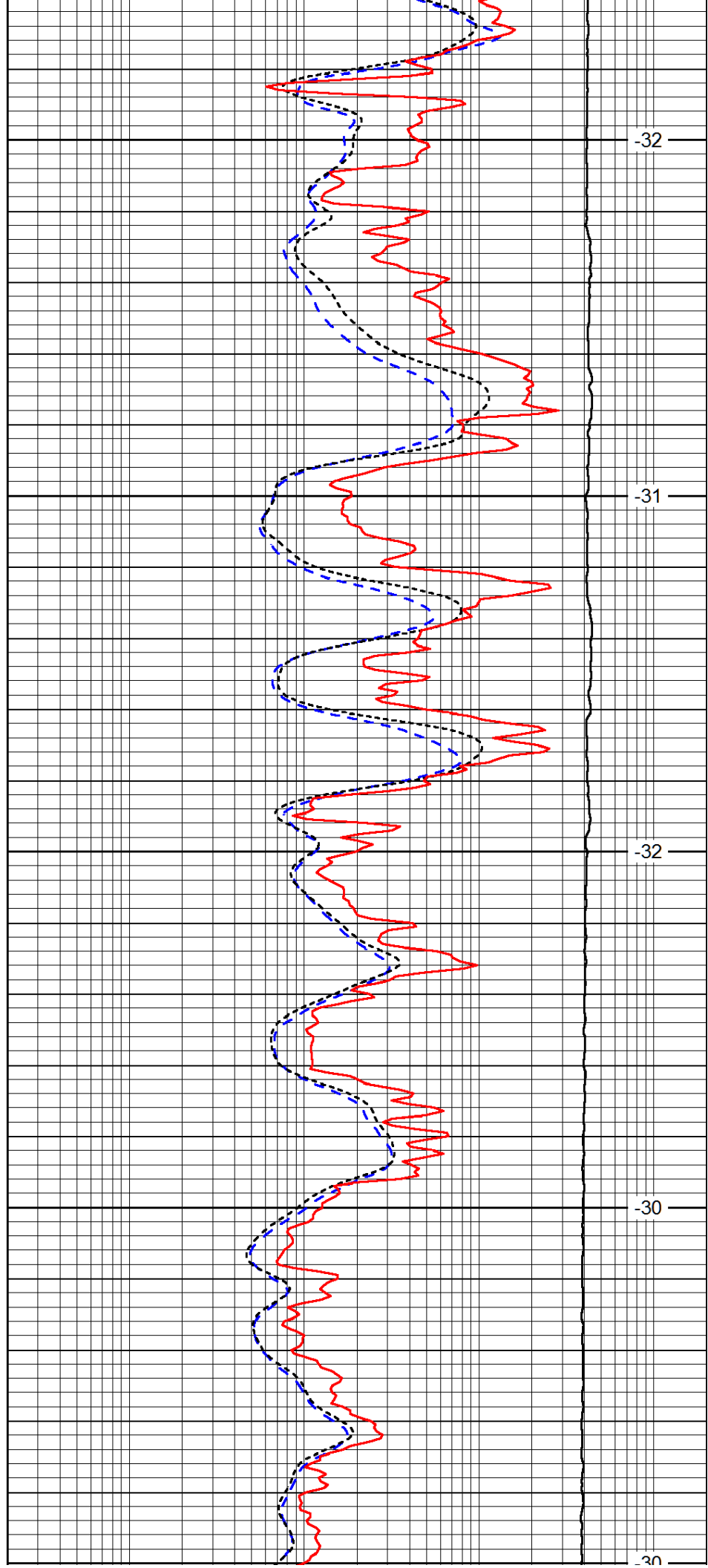
3850

3900

3950

4000

4050



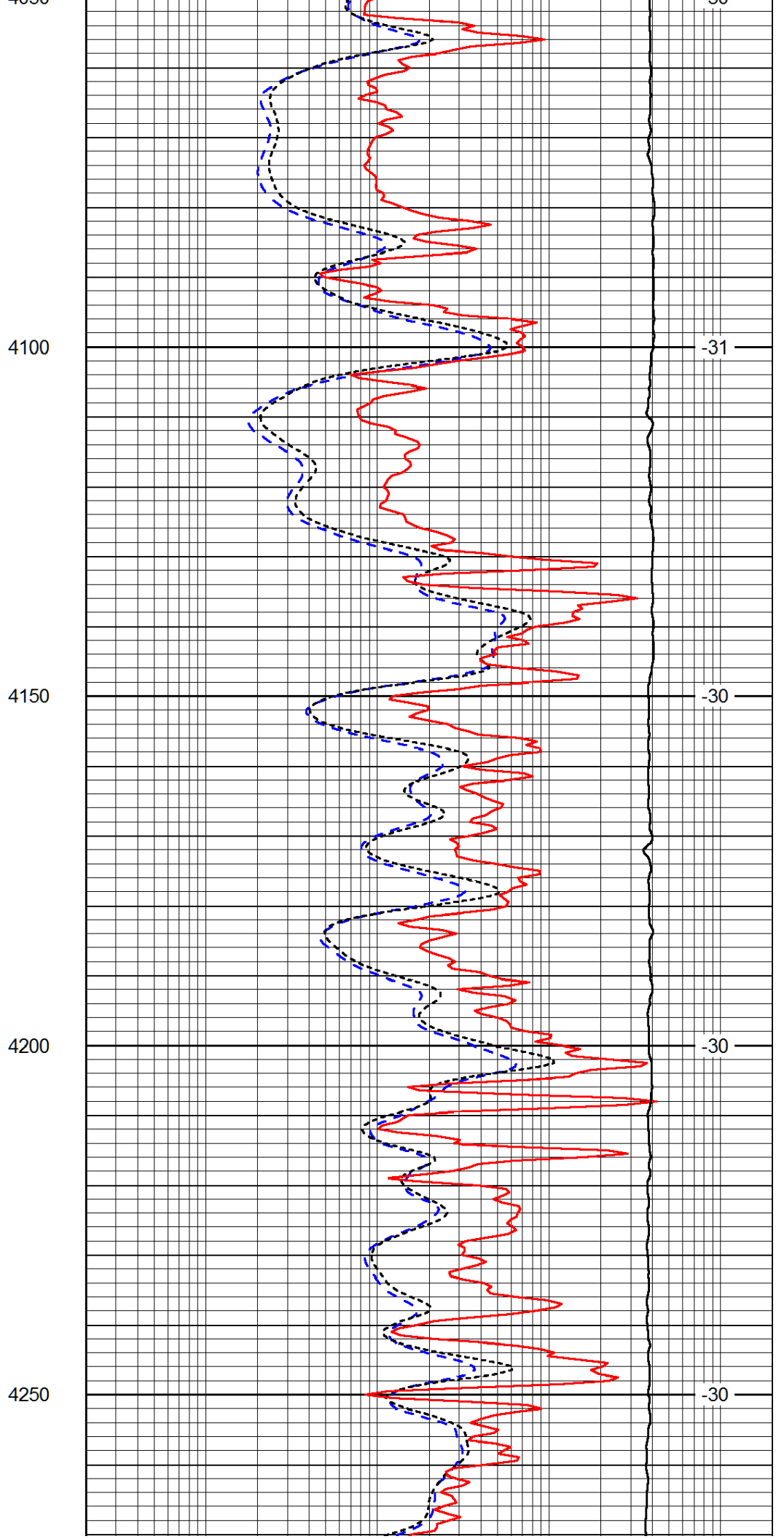
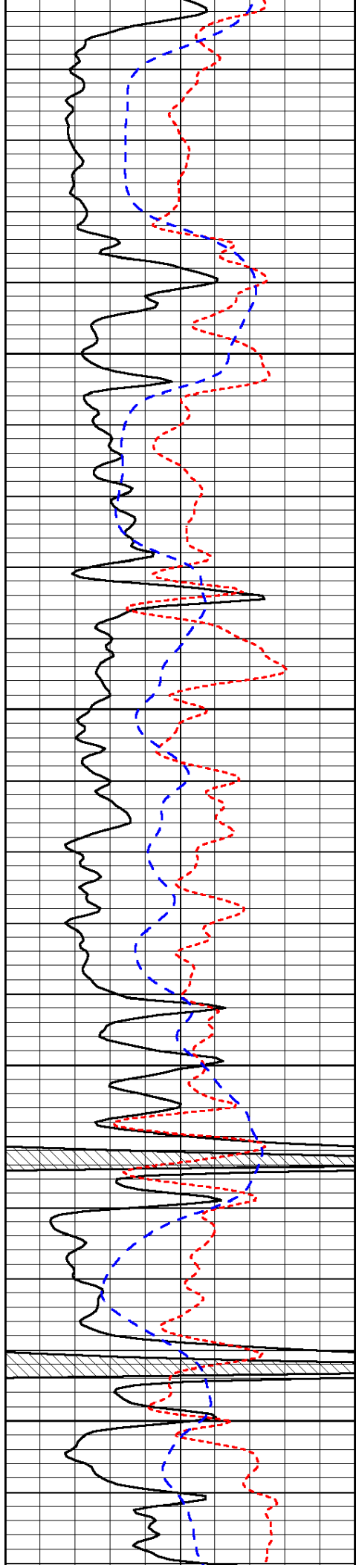
-32

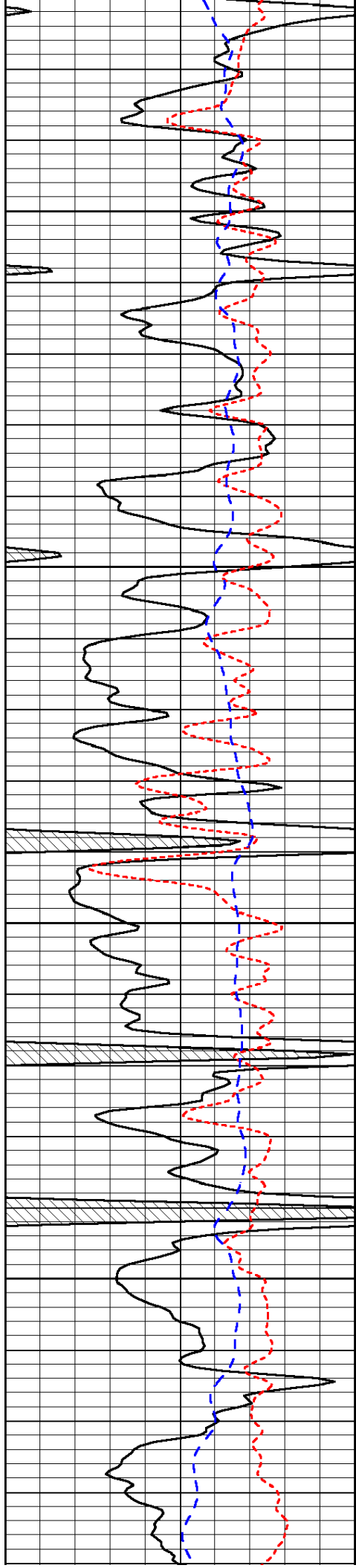
-31

-32

-30

-30



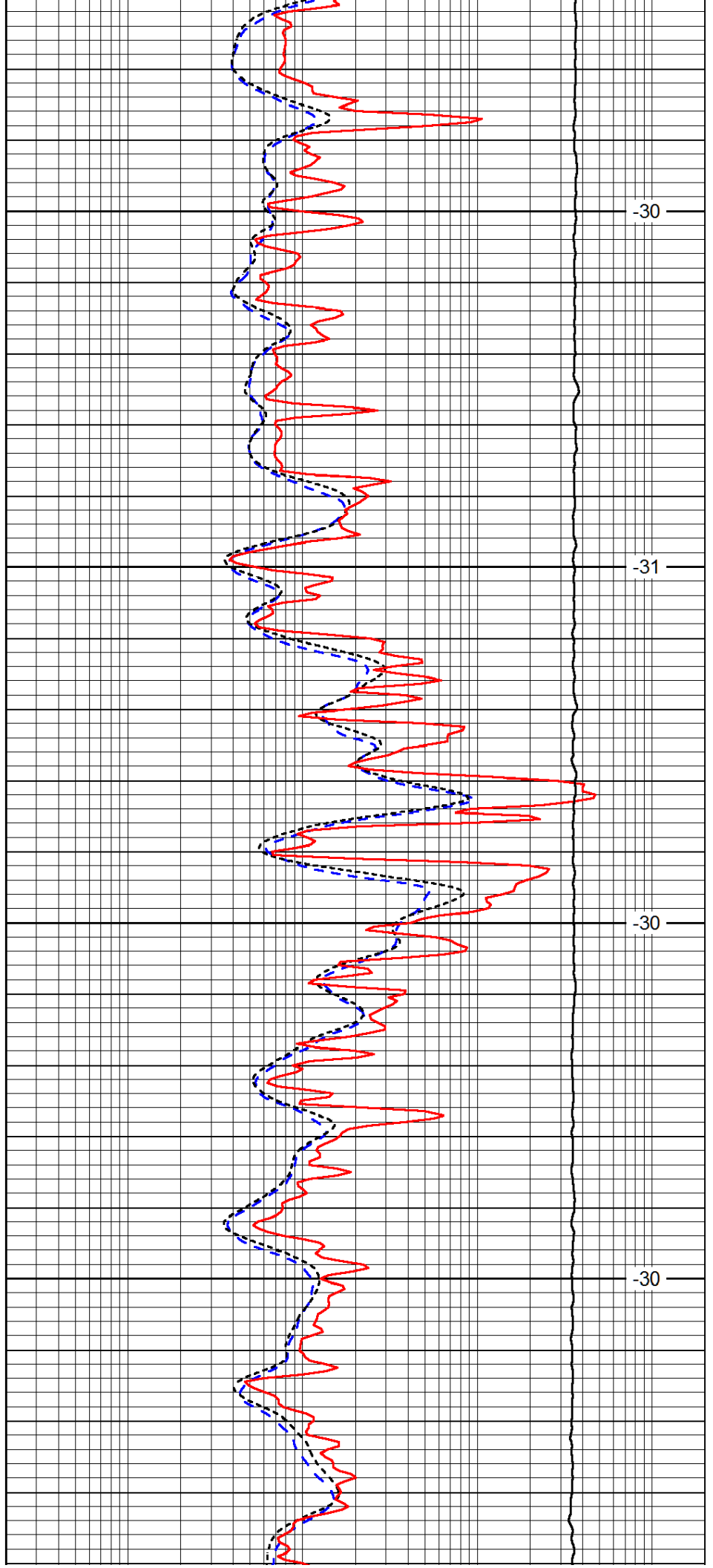


4300

4350

4400

4450

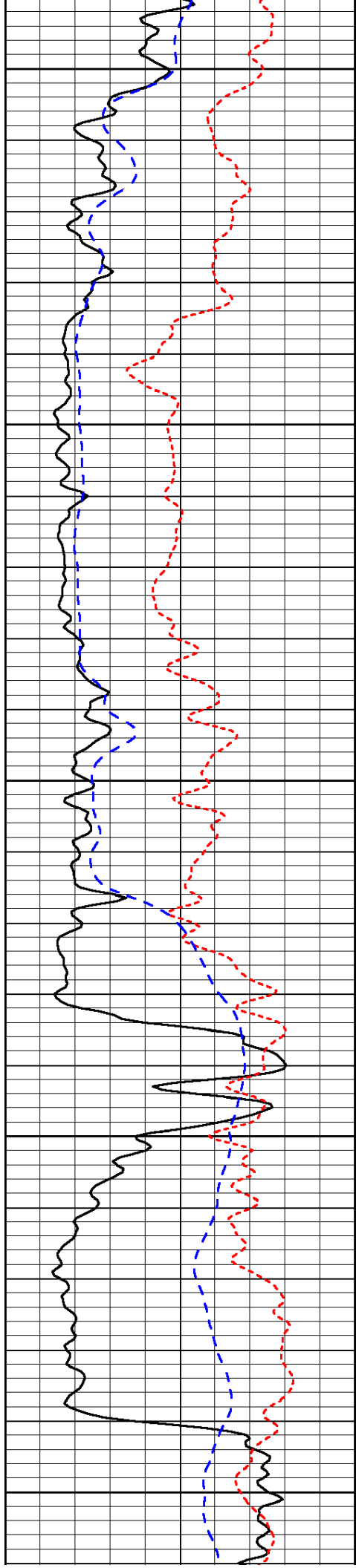


-30

-31

-30

-30



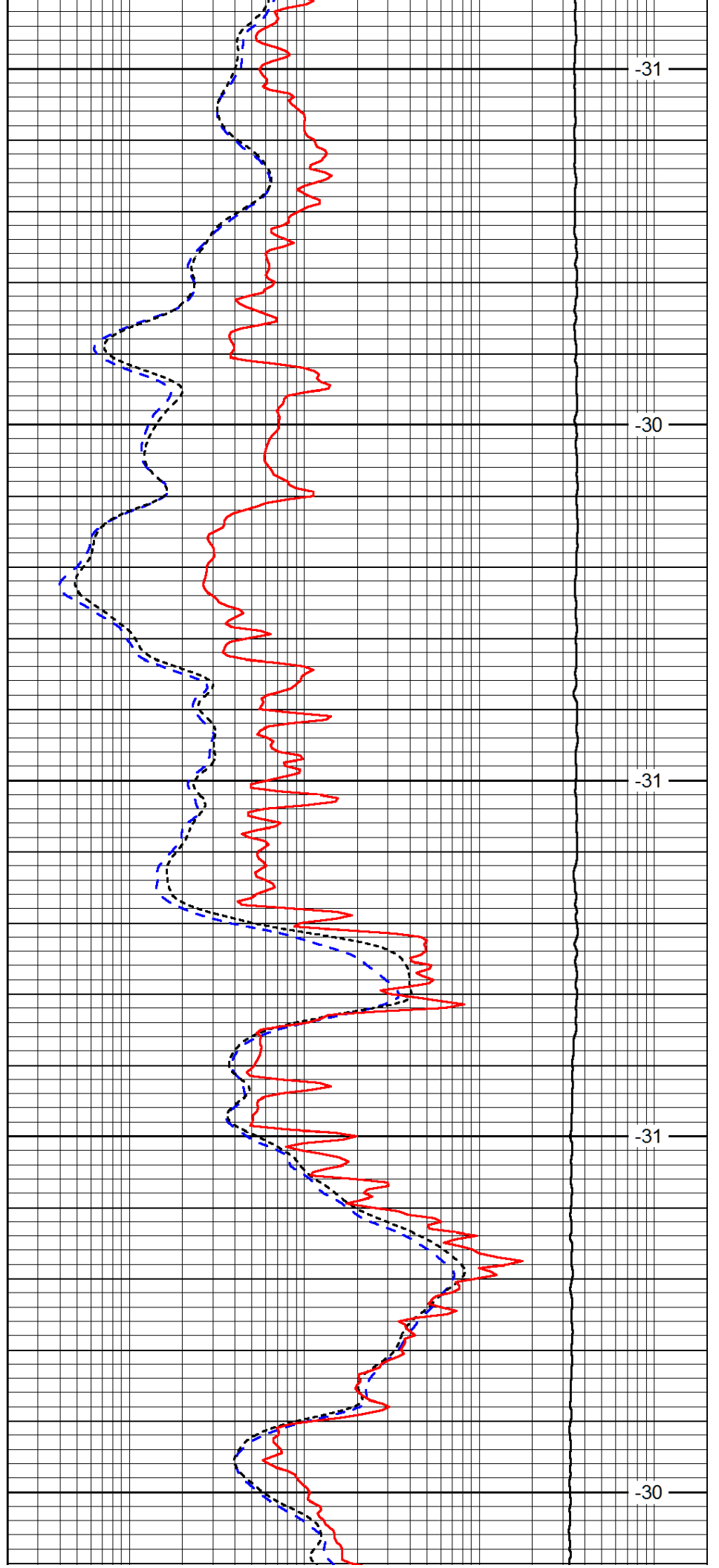
4500

4550

4600

4650

4700



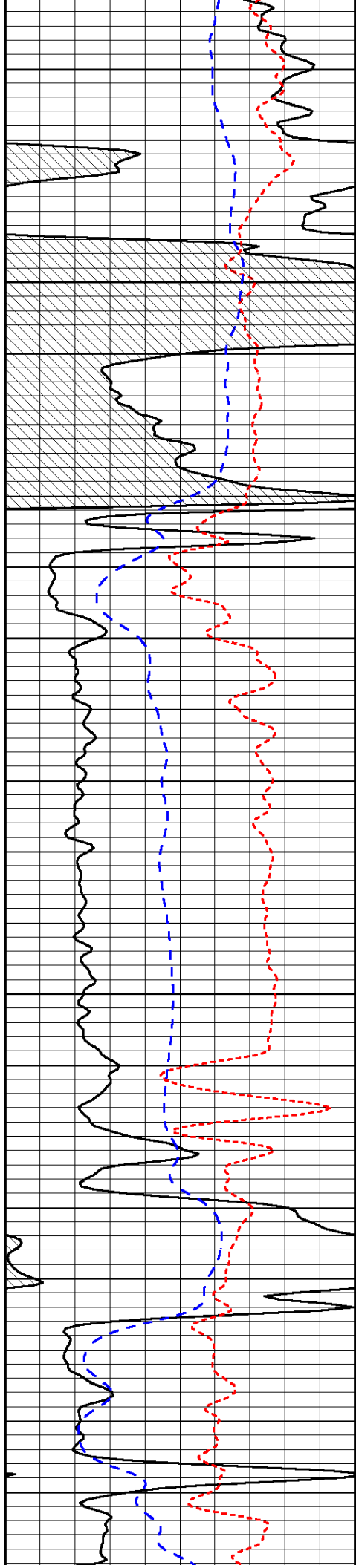
-31

-30

-31

-31

-30

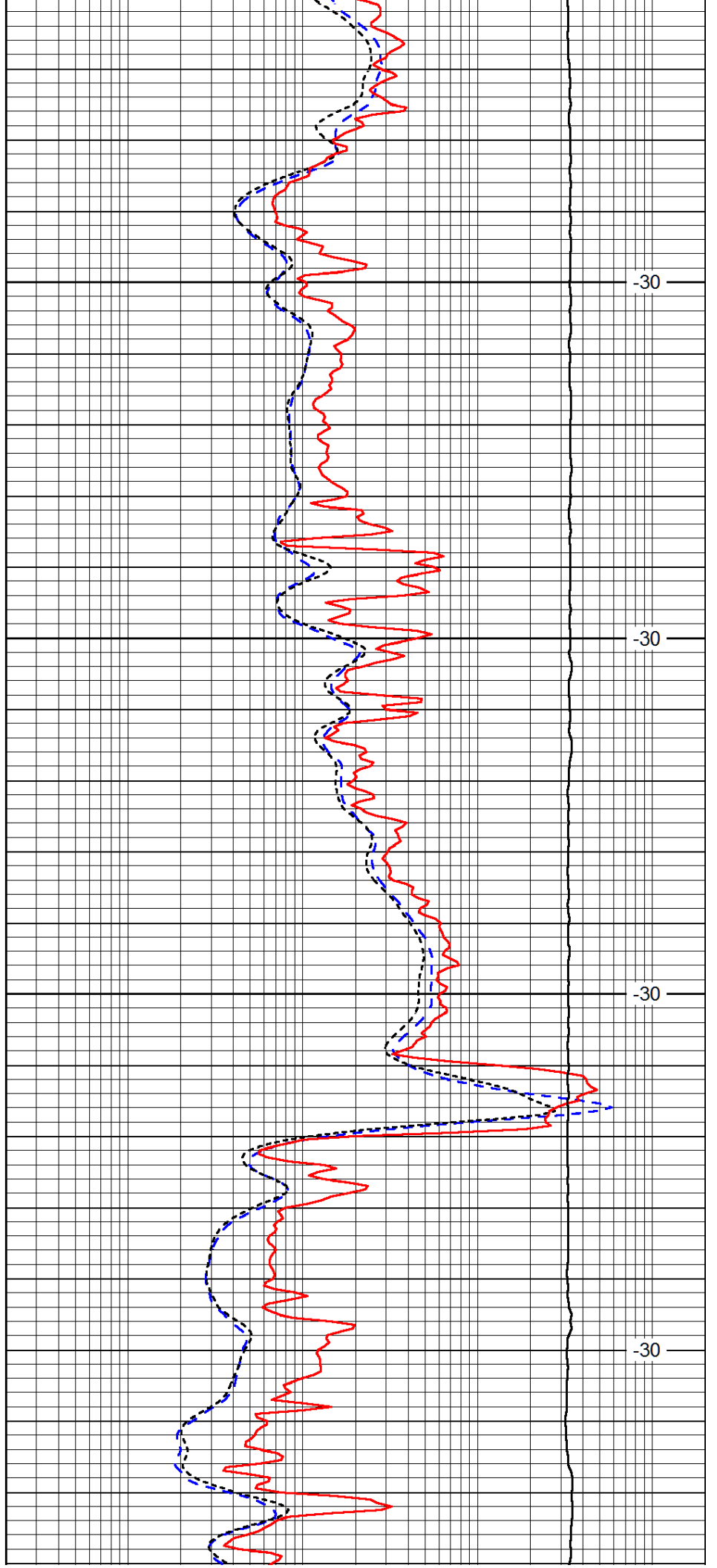


4750

4800

4850

4900

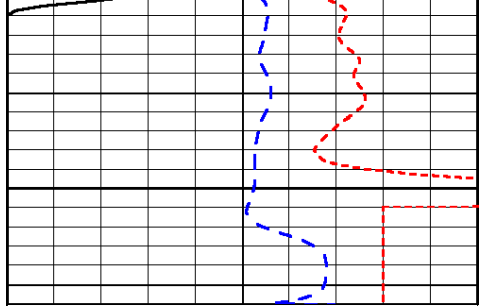


-30

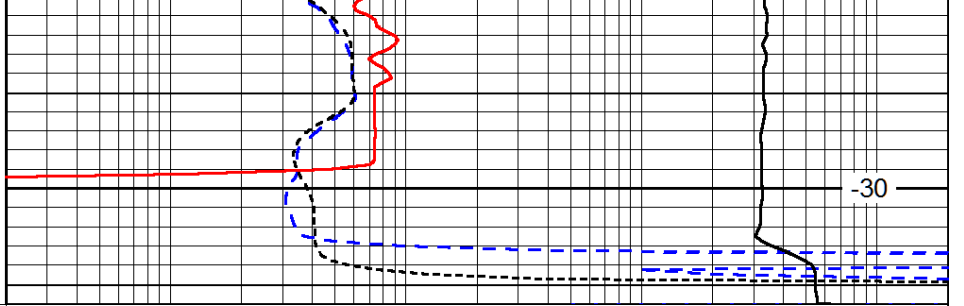
-30

-30

-30



4950



-30

0	Gamma Ray (GAPI)	150
-160	RXO/RT	40
-200	SP (mV)	0

0.2	Deep Resistivity (Ohm-m)	2000
0.2	Medium Resistivity (Ohm-m)	2000
0.2	Shallow Resistivity (Ohm-m)	2000
10000	Line Tension (lb)	0

LSPD
(ft/min)