



SUPERIOR
Hays,
Kansas

**COMPENSATED
NEUTRON / DENSITY
LOG**

Company RITCHIE EXPLORATION, INC.
Well #1 POTOSI-SIMON
Field
County FORD
State KANSAS

Company RITCHIE EXPLORATION, INC.
Well #1 POTOSI-SIMON
Field
County FORD State KANSAS

Location: 1480' FSL & 1020' FWL
E/2 - W/2 - SW
API # : 15-057-20816-0000
SEC 13 TWP 27S RGE 24W
Permanent Datum GROUND LEVEL Elevation 2454
Log Measured From KELLY BUSHING 12' A.G.L.
Drilling Measured From KELLY BUSHING
Other Services DIL
Elevation K.B. 2466
D.F. 2464
G.L. 2454

Date	7/10/12
Run Number	ONE
Depth Driller	5113
Depth Logger	5115
Bottom Logged Interval	5091
Top Log Interval	3400
Casing Driller	8 5/8" @ 346
Casing Logger	345
Bit Size	7 7/8
Type Fluid in Hole	CHEMICAL MUD
Density / Viscosity	9.3/53
pH / Fluid Loss	9.5/9.2
Source of Sample	FLOWLINE
Rim @ Meas. Temp	0.65 @ 91F
Rmf @ Meas. Temp	0.49 @ 91F
Rmc @ Meas. Temp	0.78 @ 91F
Source of Rmf / Rmc	MEASURED
Rim @ BHT	0.47 @ 126F
Time Circulation Stopped	2 HOURS
Time Logger on Bottom	
Maximum Recorded Temperature	126F
Equipment Number	680
Location	HAYS, KS.
Recorded By	JEFF GRONEMEG
Witnessed By	MIKE ENGELBRECHT
	ADAM ELDANI

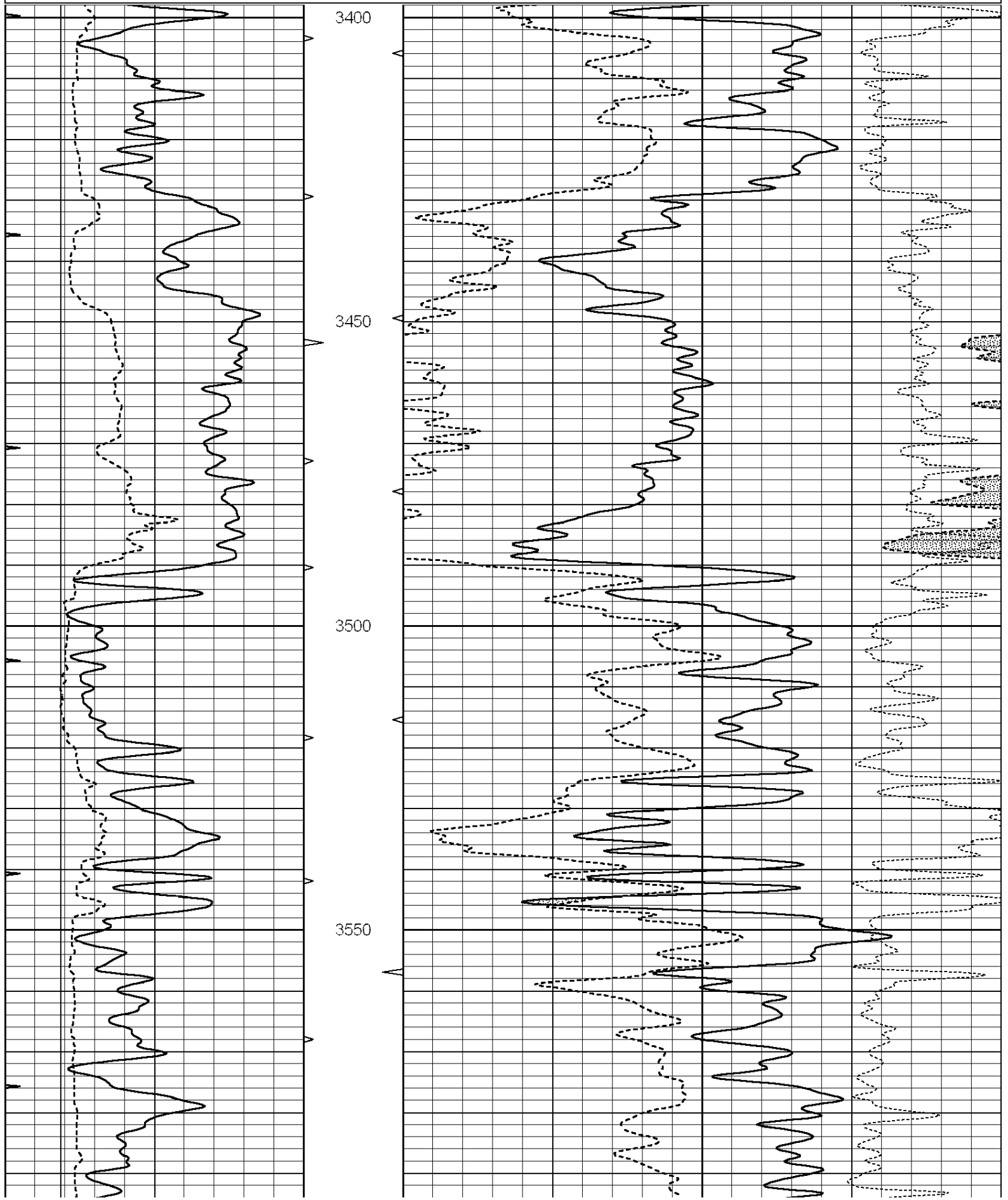
<<< Fold Here >>>

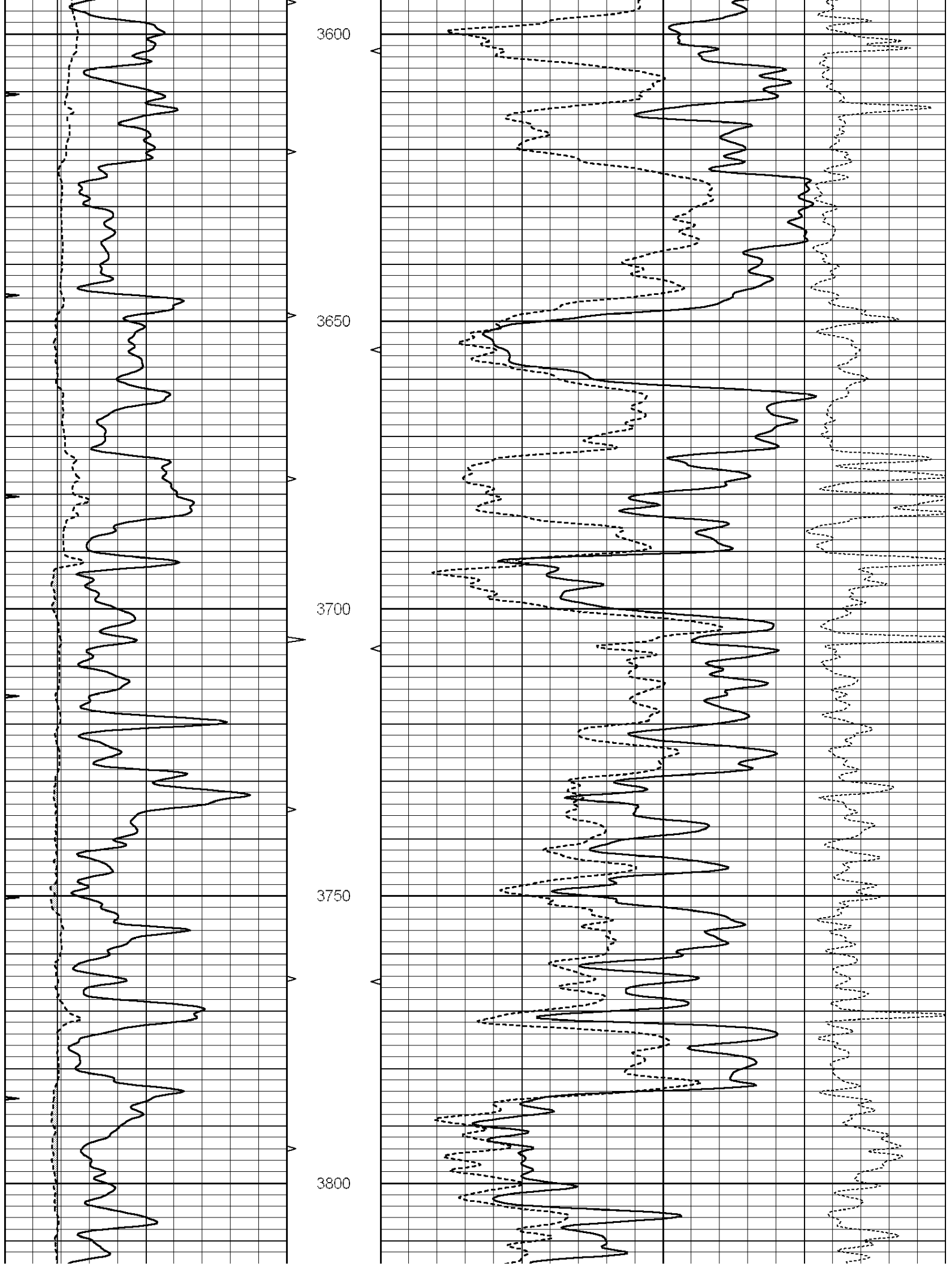
All interpretations are opinions based on inferences from electrical or other measurements and we cannot and do not guarantee the accuracy or correctness of any interpretation, and we shall not, except in the case of gross or willful negligence on our part, be liable or responsible for any loss, costs, damages, or expenses incurred or sustained by anyone resulting from any interpretation made by any of our officers, agents or employees. These interpretations are also subject to our general terms and conditions set out in our current Price Schedule.

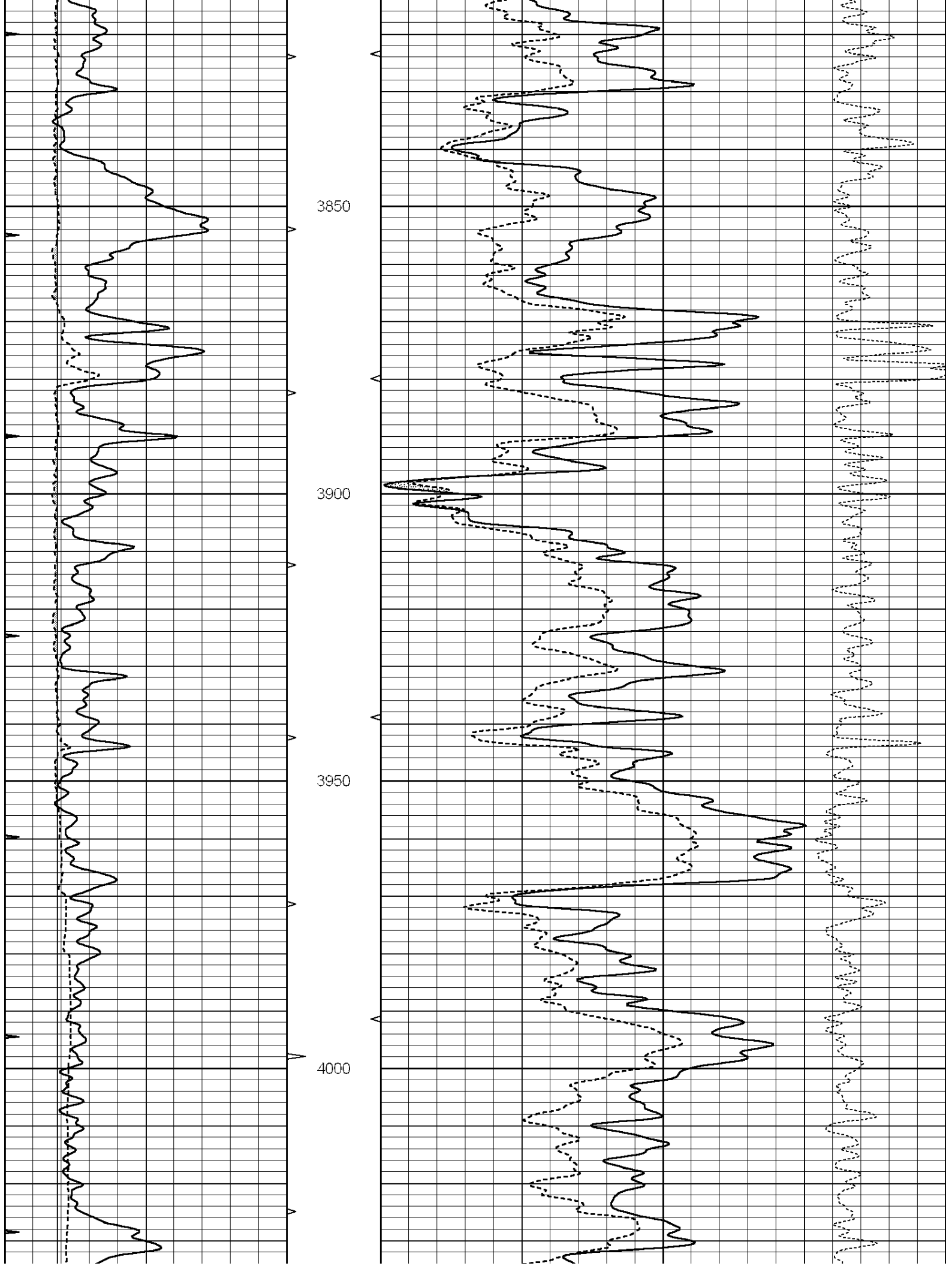
Comments

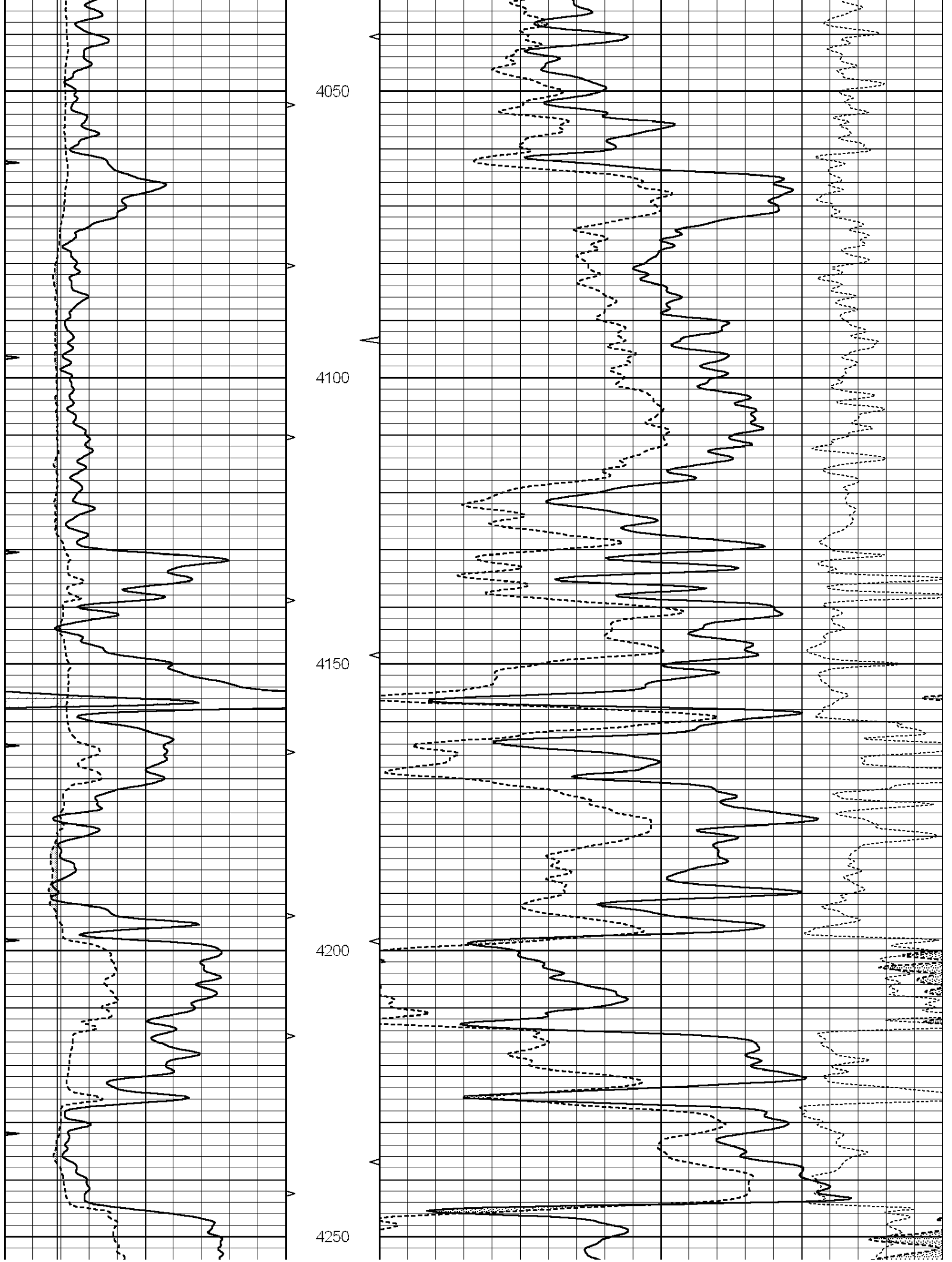
THANK YOU FOR USING SUPERIOR WELL SERVICE (785) 628-6395
DIRECTIONS
FORT DODGE, KS - 1 1/2 MILES EAST TO RD 117 - 1 1/2 MILES SOUTH
EAST & SOUTH INTO AT CORNER

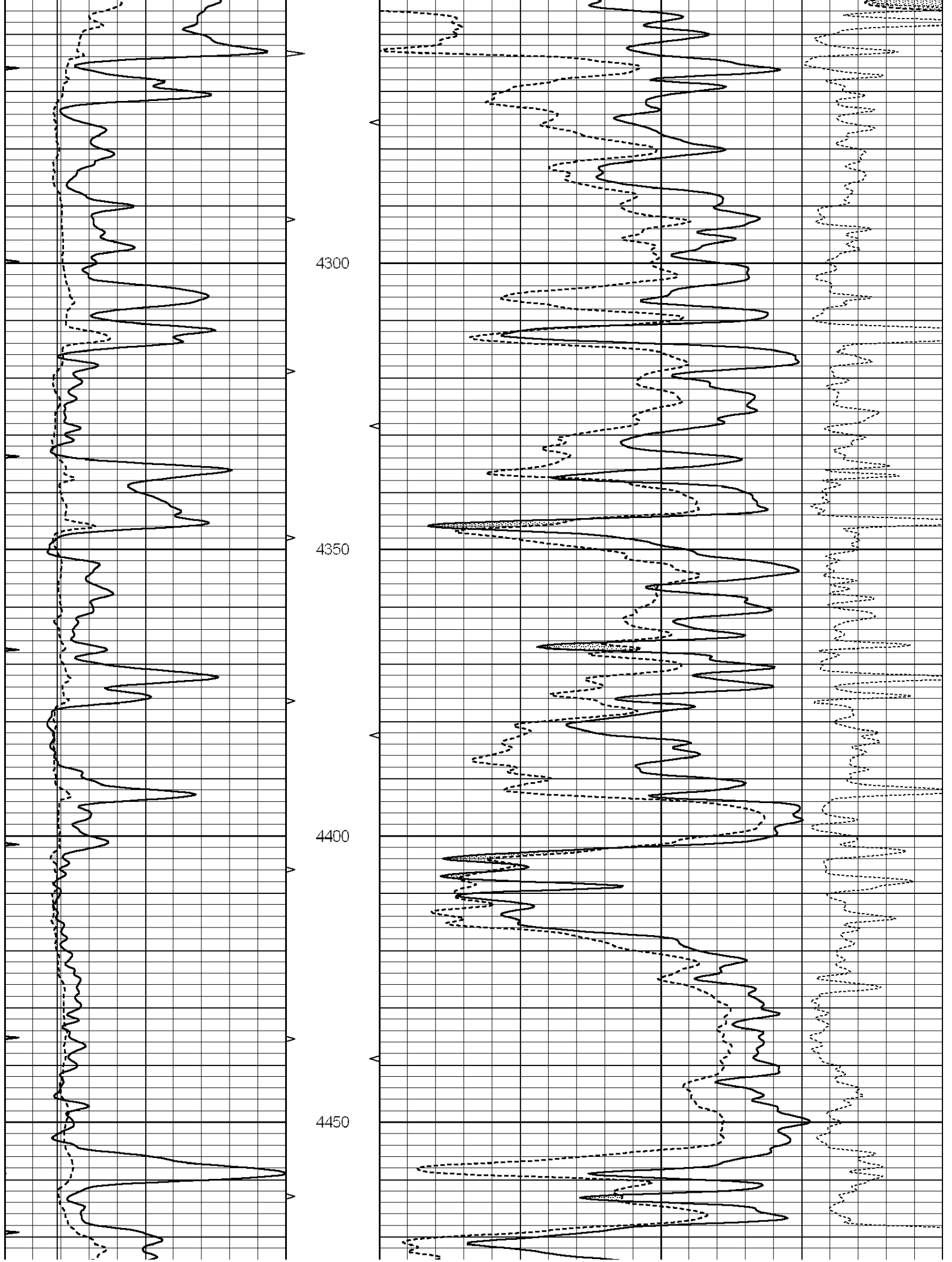
0	GAMMA RAY (GAPI)	150	AVTX	30	COMPENSATED DENSITY (pu)	-10
6	CALIPER (in)	16	10 (ft3)	0 30	COMPENSATED NEUTRON (pu)	-10
0	MINMK	20	BVTX		-0.25 CORRECTION (g/cc)	0.25
			0 (ft3)	10		

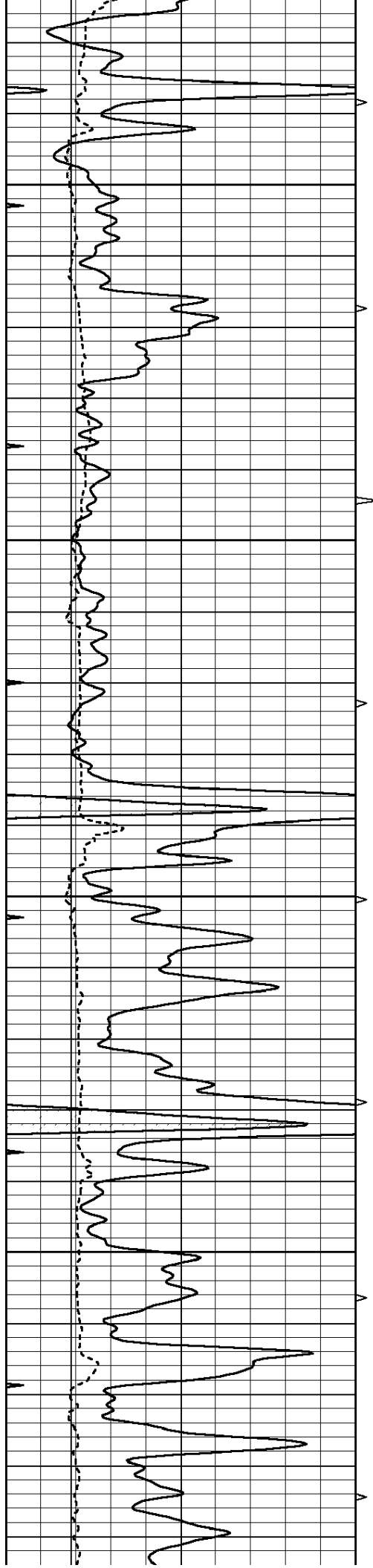










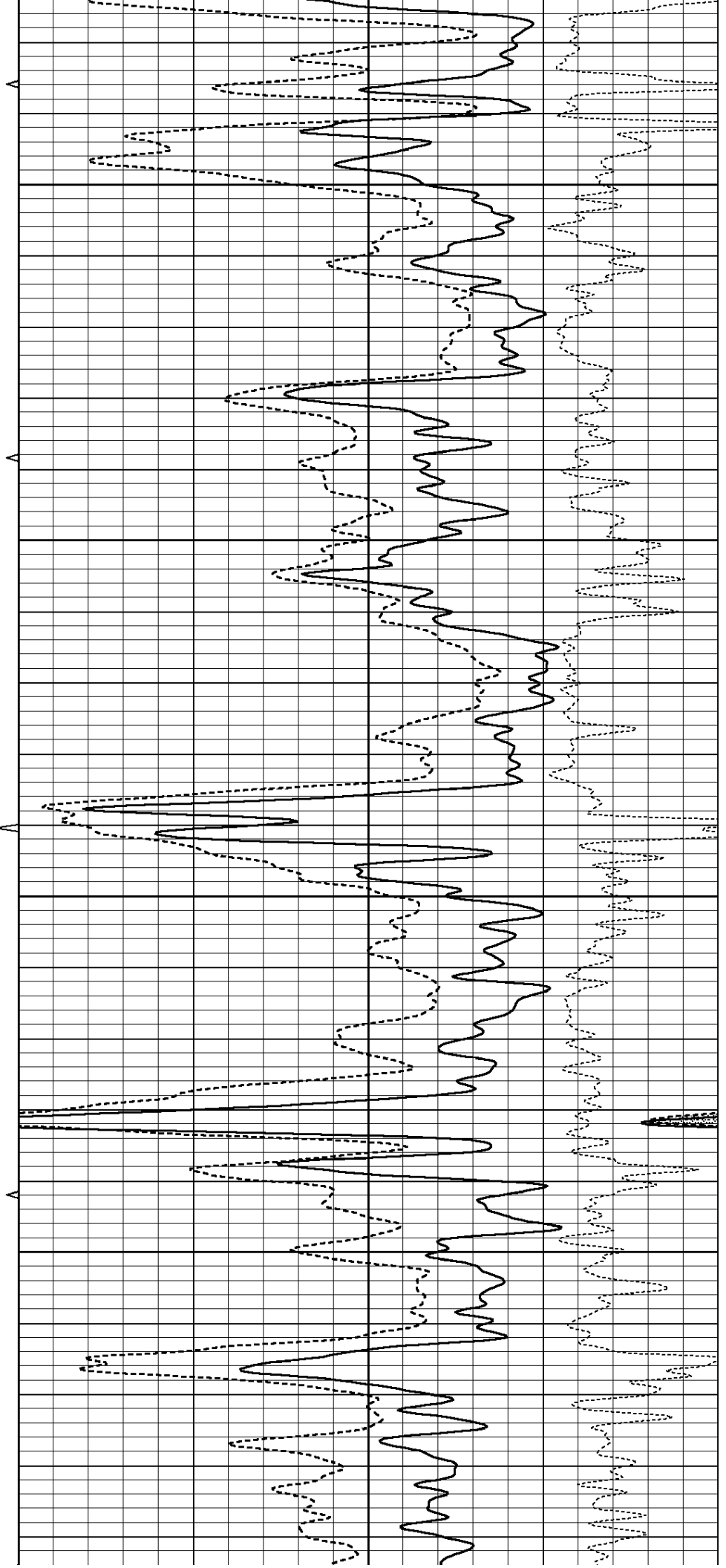


4500

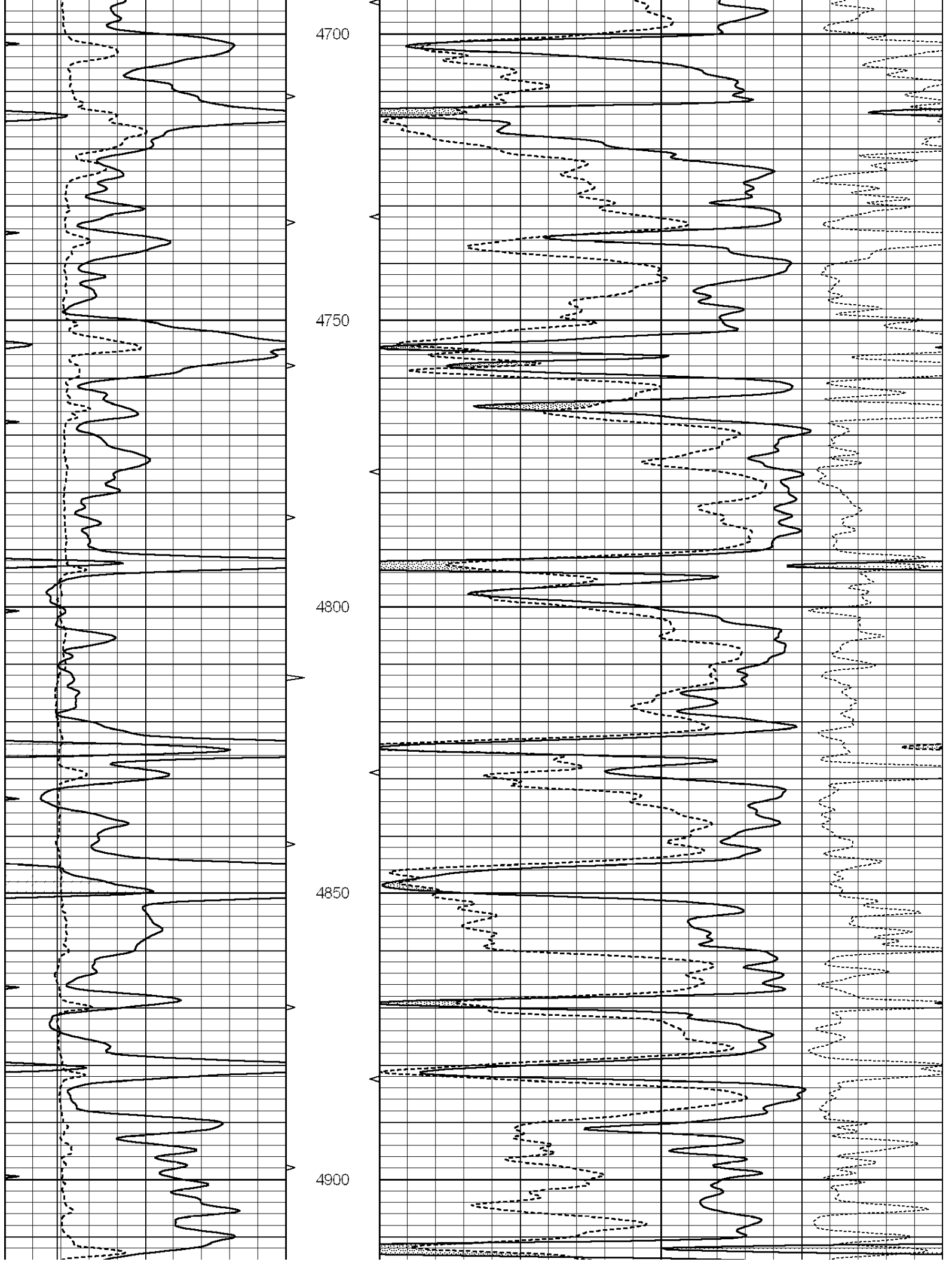
4550

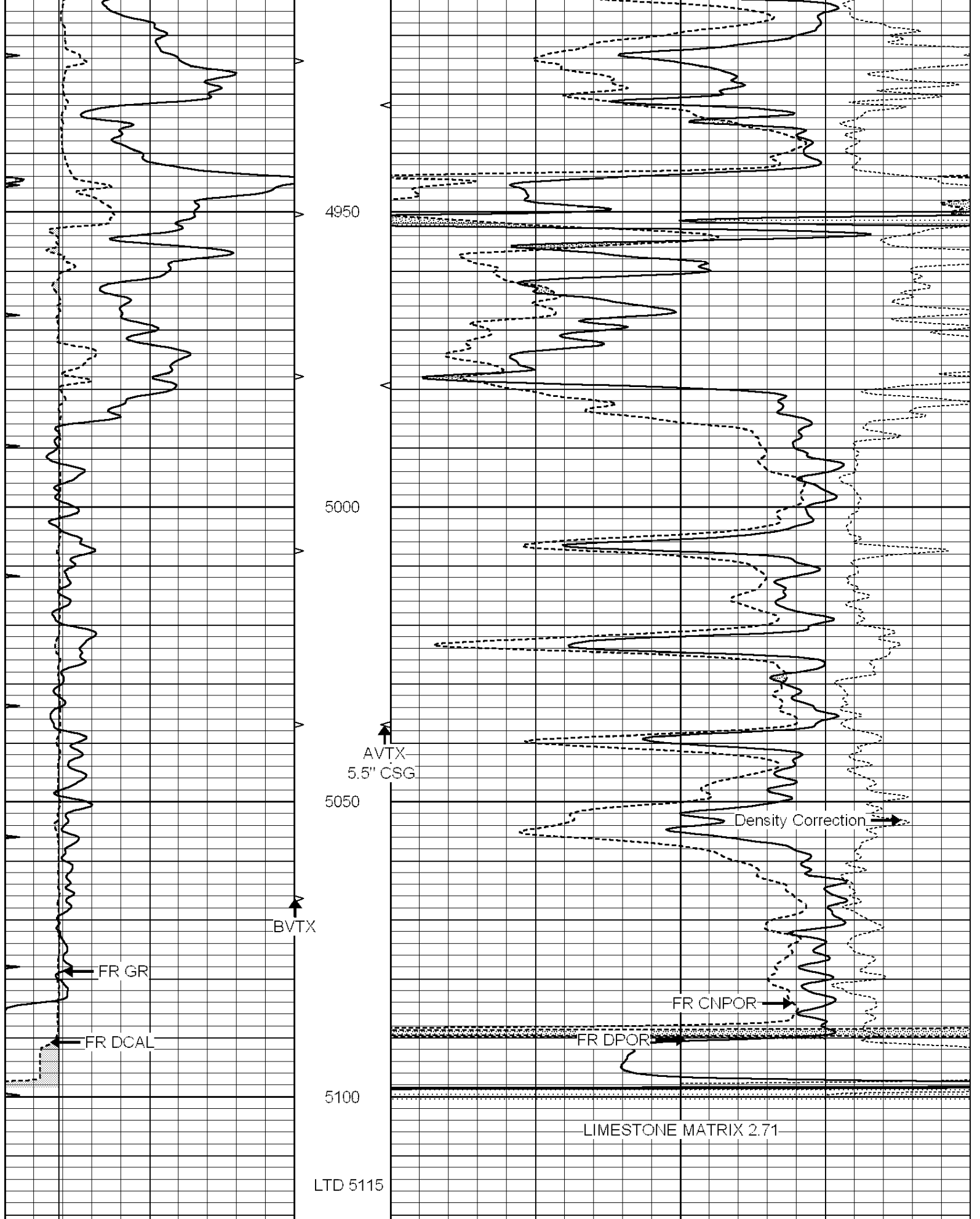
4600

4650



122





0	GAMMA RAY (GAPI)	150	AVTX	30	COMPENSATED DENSITY (pu)	-10
6	CALIPER (in)	16	10 (ft3)	0 30	COMPENSATED NEUTRON (pu)	-10
0	MINMK	20	BVTX		-0.25 CORRECTION (g/cc)	0.25

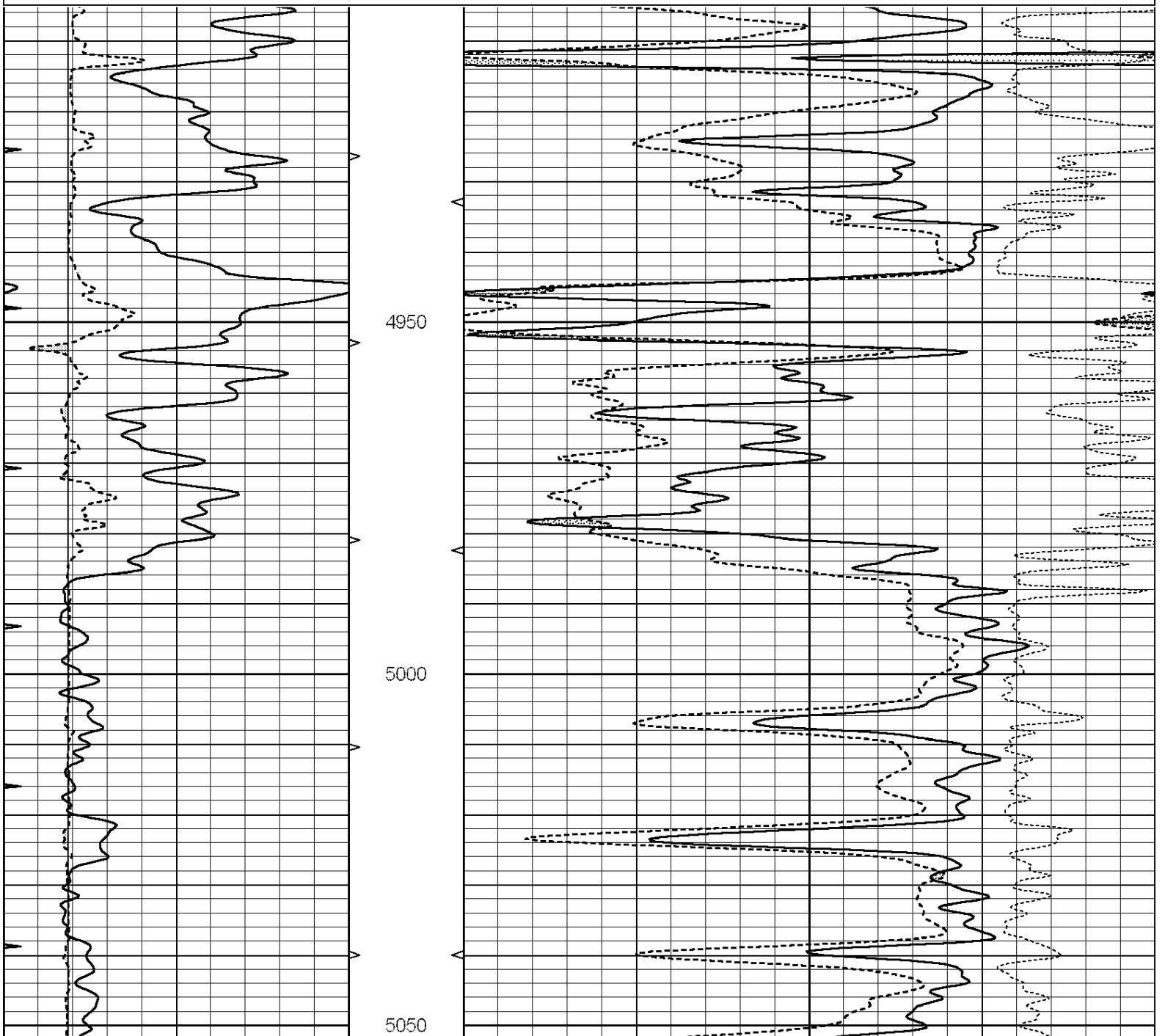


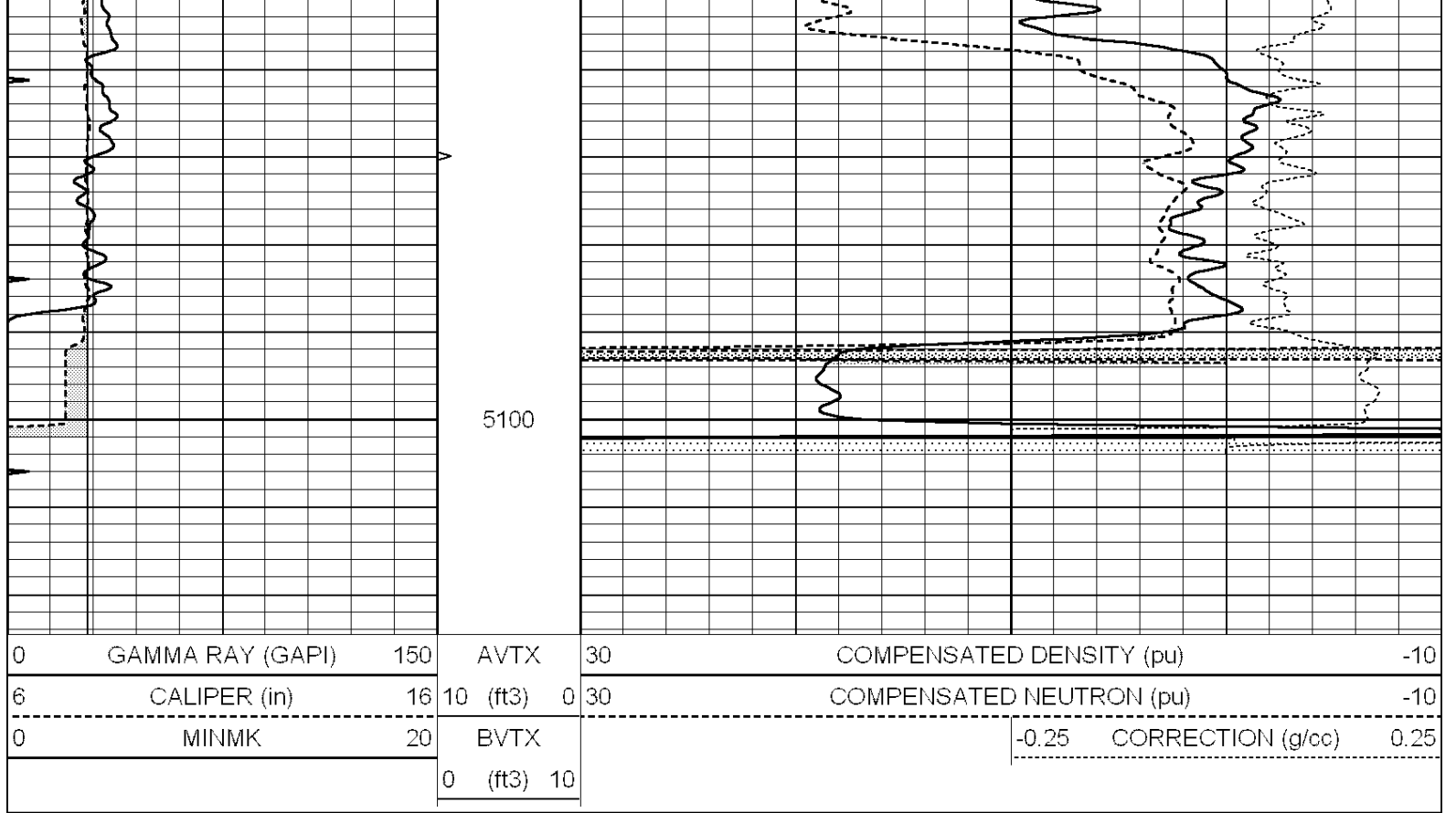
SUPERIOR
Hays,
Kansas

REPEAT SECTION

Database File: 009462ddn.db
 Dataset Pathname: pass2.1
 Presentation Format: _den_neu
 Dataset Creation: Tue Jul 10 19:49:14 2012 by Calc Open-Cased 090629
 Charted by: Depth in Feet scaled 1:240

0	GAMMA RAY (GAPI)	150	AVTX	30	COMPENSATED DENSITY (pu)	-10
6	CALIPER (in)	16	10 (ft3)	0	COMPENSATED NEUTRON (pu)	-10
0	MINMK	20	BVTX		-0.25 CORRECTION (g/cc)	0.25
			0 (ft3)	10		





Calibration Report

Database File: 009462ddn.db
 Dataset Pathname: pass3.1
 Dataset Creation: Tue Jul 10 20:46:30 2012 by Calc Open-Cased 090629

Dual Induction Calibration Report

Serial-Model: PROBE8-DILG
 Surface Cal Performed: Fri Aug 01 06:33:19 2008
 Downhole Cal Performed: Mon Jul 28 11:08:27 2008
 After Survey Verification Performed: Mon Jul 28 11:08:27 2008

Surface Calibration

Loop:	Readings				References		Results	
	Air	Loop	V		Air	Loop	m	b
Deep	0.015	0.648	V	0.000	400.000	mmho/m	632.616	-9.730
Medium	0.029	0.796	V	0.000	464.000	mmho/m	605.049	-17.680
Internal:	Zero	Cal		Zero	Cal		m	b
Deep	0.017	0.657	V	0.000	400.000	mmho/m	625.153	-10.619
Medium	0.016	0.757	V	0.000	464.000	mmho/m	625.992	-9.739

Downhole Calibration

	Readings				References		Results	
	Zero	Cal	V		Zero	Cal	m'	b'
Deep	0.000	0.000		2.011	405.777	mmho/m	1.000	0.000
Medium	0.000	0.000		7.590	503.393	mmho/m	1.000	0.000
LL3		7.500	V		1500.000	Ohm-m		
		0.000	V		20.000	Ohm-m		
		-7.200	V		3800.000	mmho-m		

After Survey Verification

Readings	Targets	Results
----------	---------	---------

	Zero	Cal		Zero	Cal		m'	b'
Deep	0.000	0.000	mmho/m	0.000	0.000	mmho/m	0.000	0.000
Medium	0.000	0.000	mmho/m	0.000	0.000	mmho/m	0.000	0.000
LL3		1.000	Ohm-m		1.000	Ohm-m		
		0.000	Ohm-m		0.000	Ohm-m		
		1.000	mmho-m		1.000	mmho-m		

Compensated Density Calibration Report

Serial-Model: GEAR4-GEARHART
 Source / Verifier: 143 / 143
 Master Calibration Performed: Mon Mar 19 19:07:19 2012

Master Calibration

	Density		Far Detector	Near Detector	
Magnesium	1.710	g/cc	1015.91	497.51	cps
Aluminum	2.600	g/cc	227.67	350.20	cps
Spine Angle = 76.79			Density/Spine Ratio = 0.579		
	Size		Reading		
Small Ring	8.00	in	3.21	V	
Large Ring	14.00	in	5.46	V	

Compensated Neutron Calibration Report

Serial Number: 6I
 Tool Model: G

CALIBRATION

Detector	Readings		Target		Normalization
Short Space	1.00	cps	1.00	cps	1.0000
Long Space	1.00	cps	1.00	cps	1.0000

Gamma Ray Calibration Report

Serial Number: #8
 Tool Model: OPEN
 Performed: Mon Jun 13 16:56:43 2011

Calibrator Value: 150.0 GAPI

Background Reading: 0.0 cps
 Calibrator Reading: 175.0 cps

Sensitivity: 0.8371 GAPI/cps