



SUPERIOR
Hays,
Kansas

**DUAL
INDUCTION
LOG**

Company RITCHIE EXPLORATION, INC.
Well #1 POTOSI-SIMON
Field
County FORD
State KANSAS

Company RITCHIE EXPLORATION, INC.
Well #1 POTOSI-SIMON
Field
County FORD State KANSAS

Location: 1480' FSL & 1020' FWL
E/2 - W/2 - SW
API # : 15-057-20816-0000
SEC 13 TWP 27S RGE 24W
Permanent Datum GROUND LEVEL Elevation 2454
Log Measured From KELLY BUSHING 12' A.G.L.
Drilling Measured From KELLY BUSHING
Other Services CDL/CNL
Elevation K.B. 2466
D.F. 2464
G.L. 2454

Date	7/10/12
Run Number	ONE
Depth Driller	5113
Depth Logger	5115
Bottom Logged Interval	5113
Top Log Interval	0
Casing Driller	8 5/8" @ 346
Casing Logger	345
Bit Size	7 7/8
Type Fluid in Hole	CHEMICAL MUD
Density / Viscosity	9.3/53
pH / Fluid Loss	9.5/9.2
Source of Sample	FLOWLINE
Rm @ Meas. Temp	0.65 @ 91F
Rmf @ Meas. Temp	0.49 @ 91F
Rmc @ Meas. Temp	0.78 @ 91F
Source of Rmf / Rmc	MEASURED
Rm @ BHT	0.47 @ 126F
Time Circulation Stopped	2 HOURS
Time Logger on Bottom	
Maximum Recorded Temperature	126F
Equipment Number	680
Location	HAYS, KS.
Recorded By	JEFF GRONEMEG
Witnessed By	MIKE ENGELBRECHT
	ADAM ELDANI

<<< Fold Here >>>

All interpretations are opinions based on inferences from electrical or other measurements and we cannot and do not guarantee the accuracy or correctness of any interpretation, and we shall not, except in the case of gross or willful negligence on our part, be liable or responsible for any loss, costs, damages, or expenses incurred or sustained by anyone resulting from any interpretation made by any of our officers, agents or employees. These interpretations are also subject to our general terms and conditions set out in our current Price Schedule.

Comments

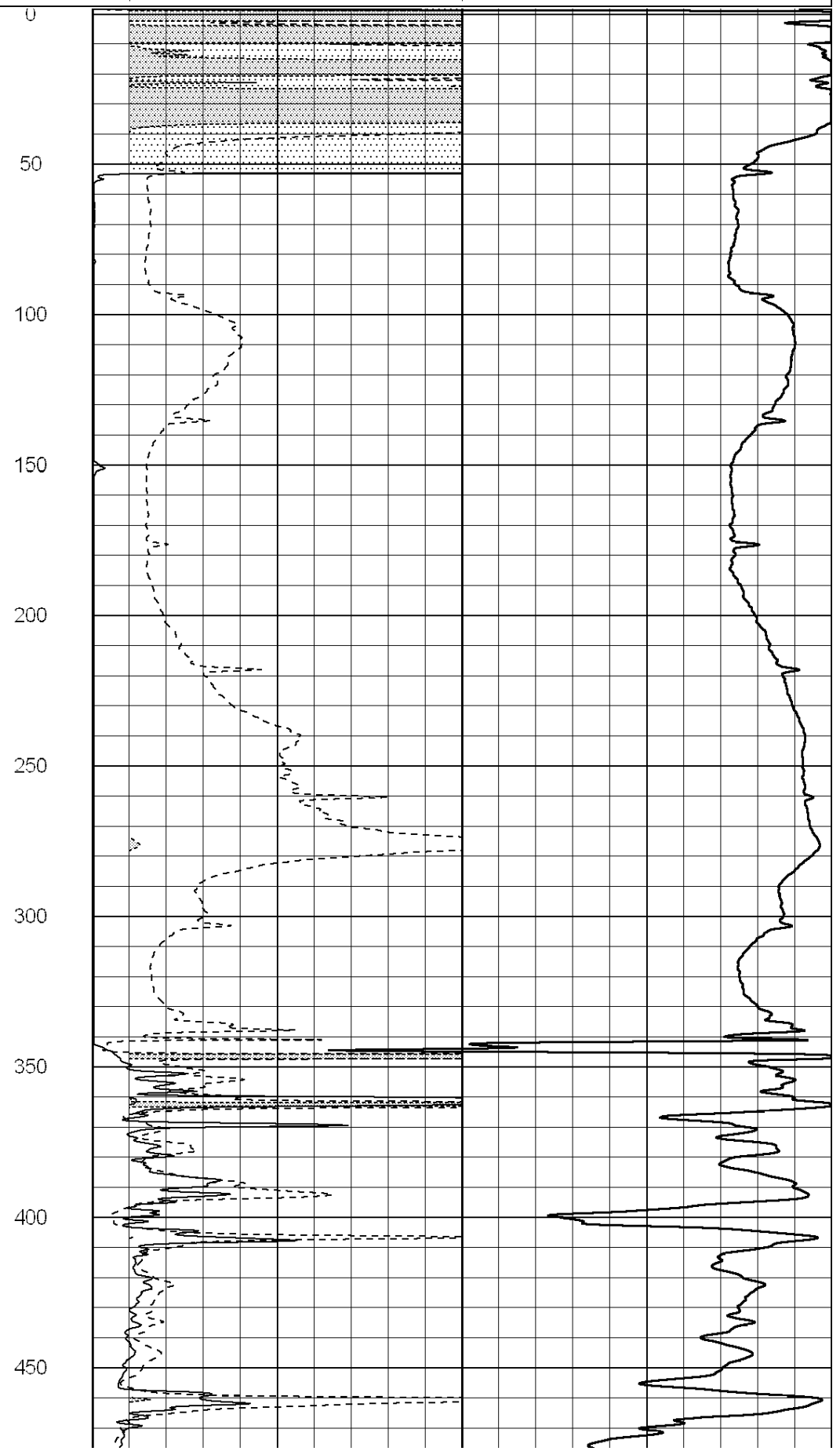
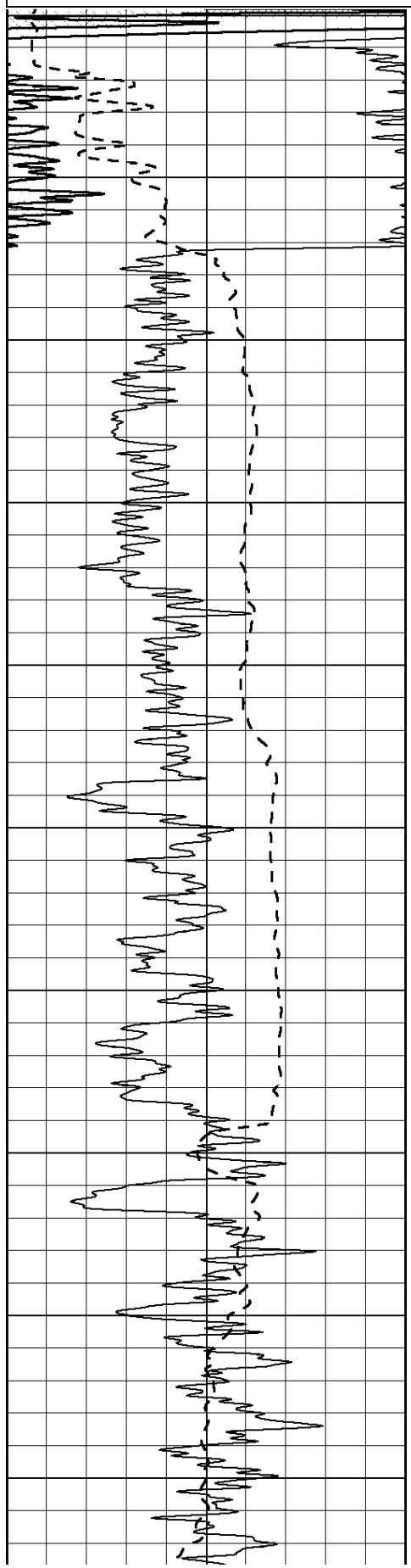
THANK YOU FOR USING SUPERIOR WELL SERVICE (785) 628-6395
DIRECTIONS
FORT DODGE, KS - 1 1/2 MILES EAST TO RD 117 - 1 1/2 MILES SOUTH
EAST & SOUTH INTO AT CORNER

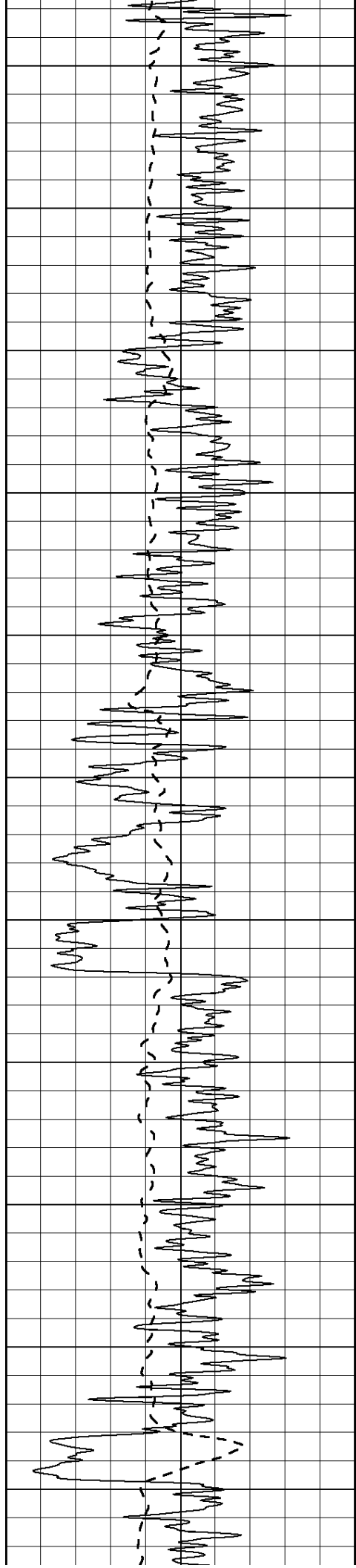
0	Gamma Ray (GAPI)	150
-100	SP (mV)	100

0	RLL3 (Ohm-m)	50
0	Deep Induction (Ohm-m)	50

1000	CILD (mmho/m)	0
------	---------------	---

50	RILD X10 (Ohm-m)	500
50	RLL3 X10 (Ohm-m)	500





500

550

600

650

700

750

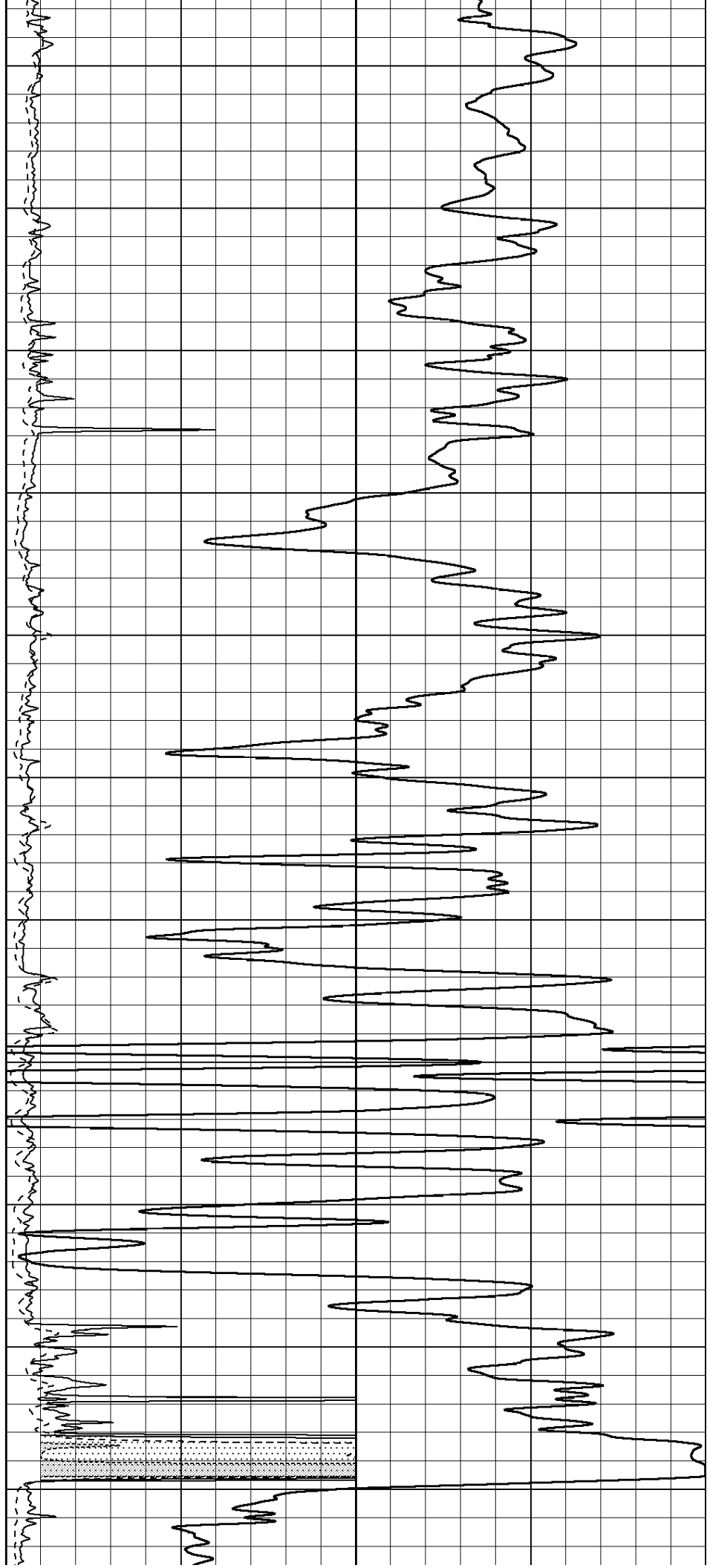
800

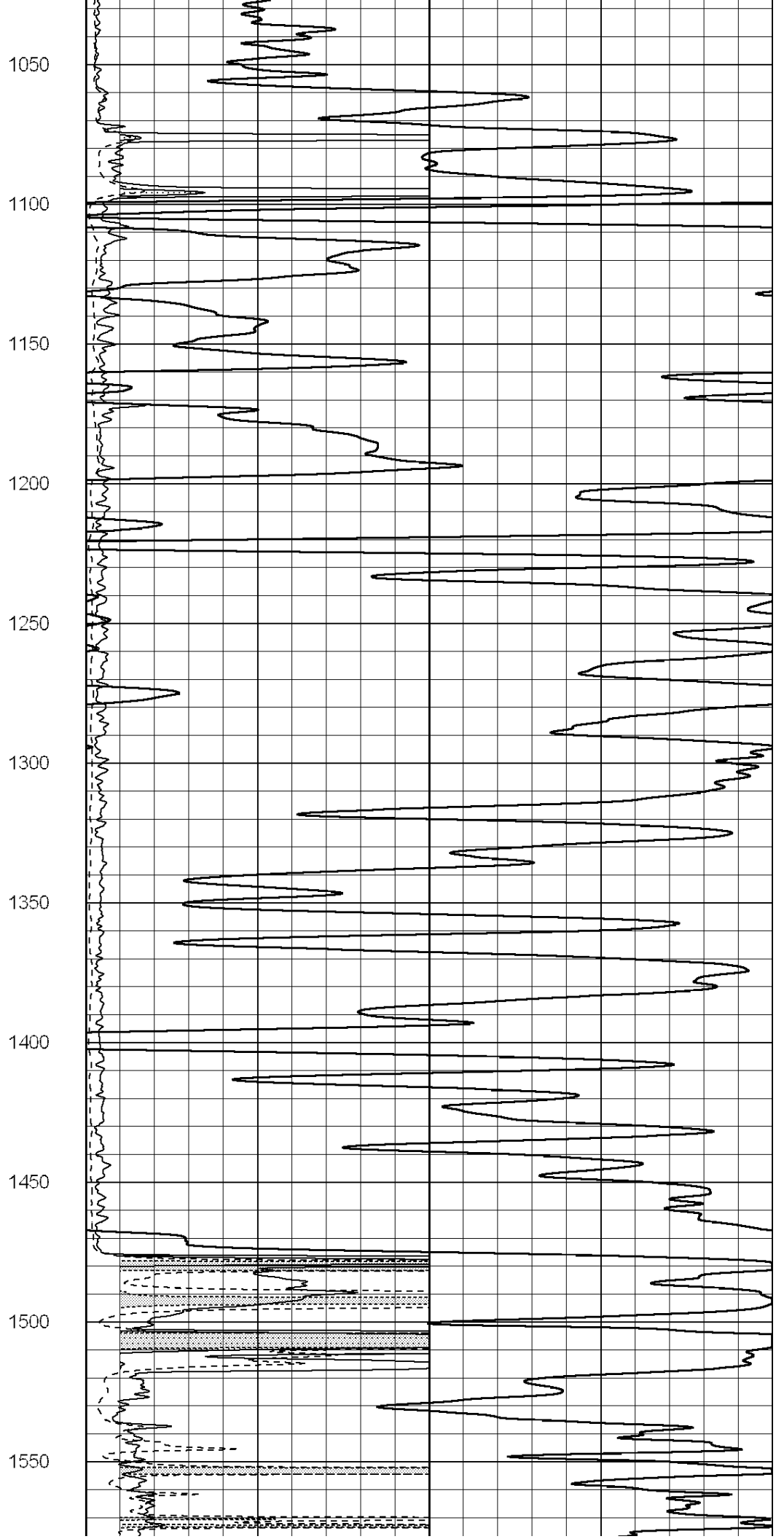
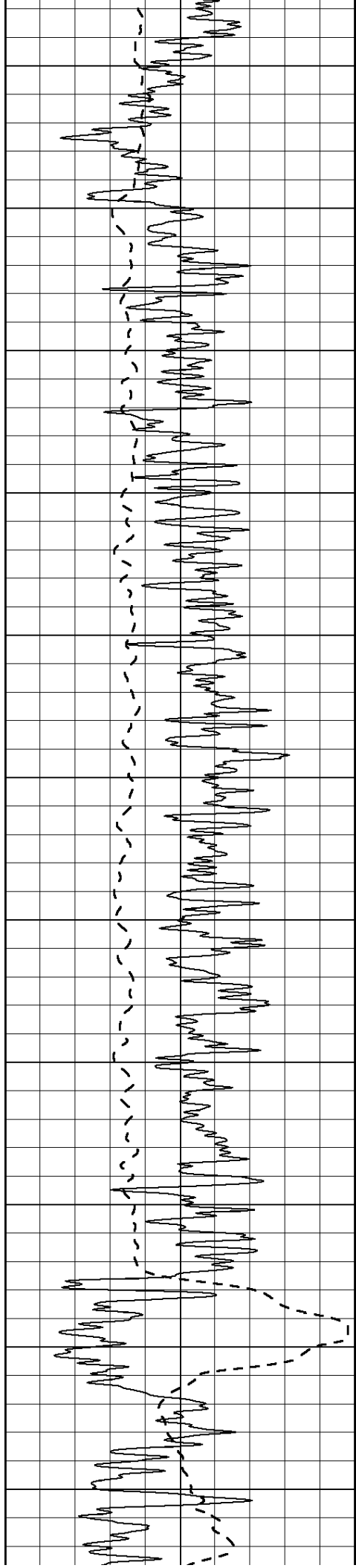
850

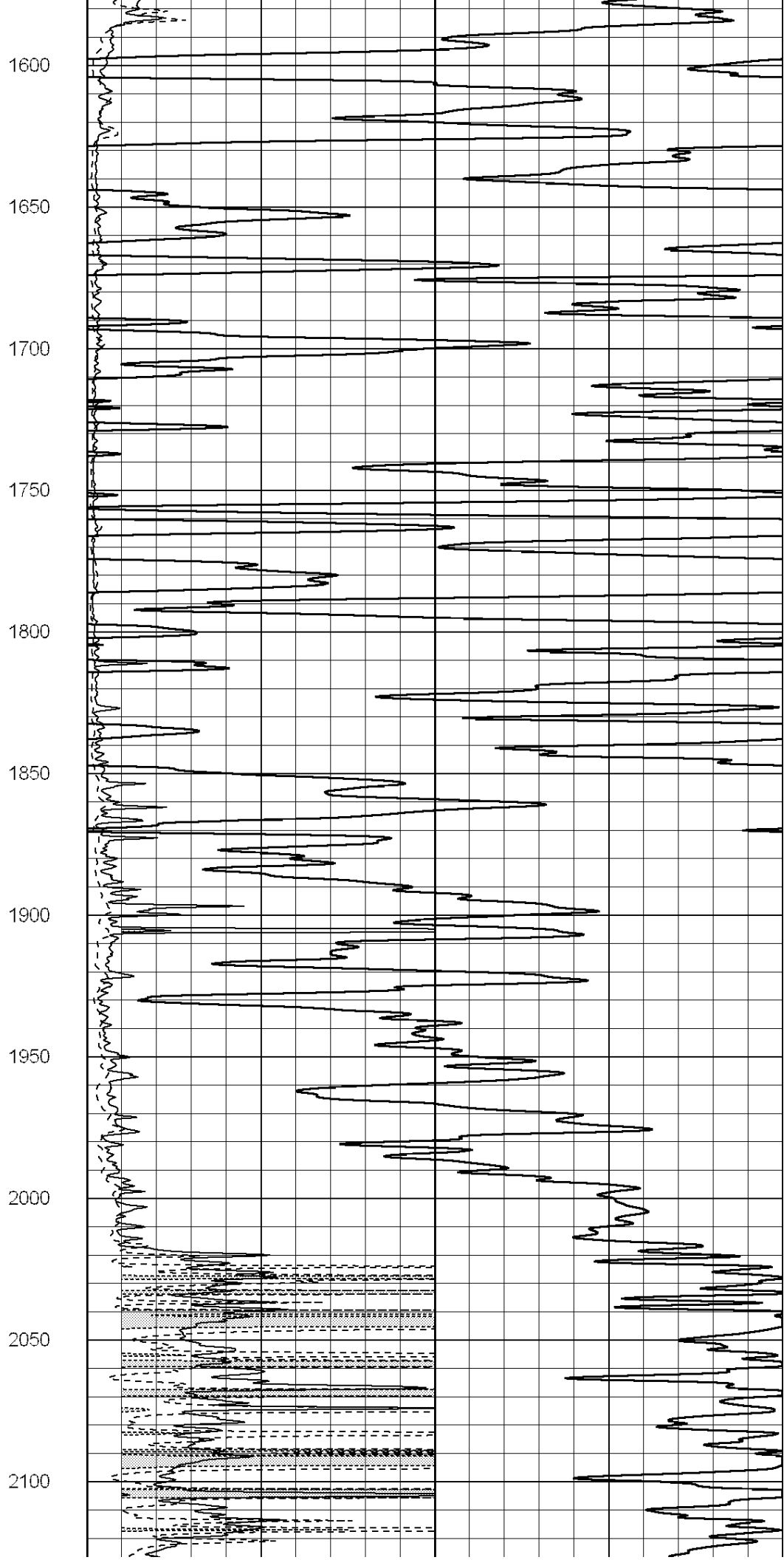
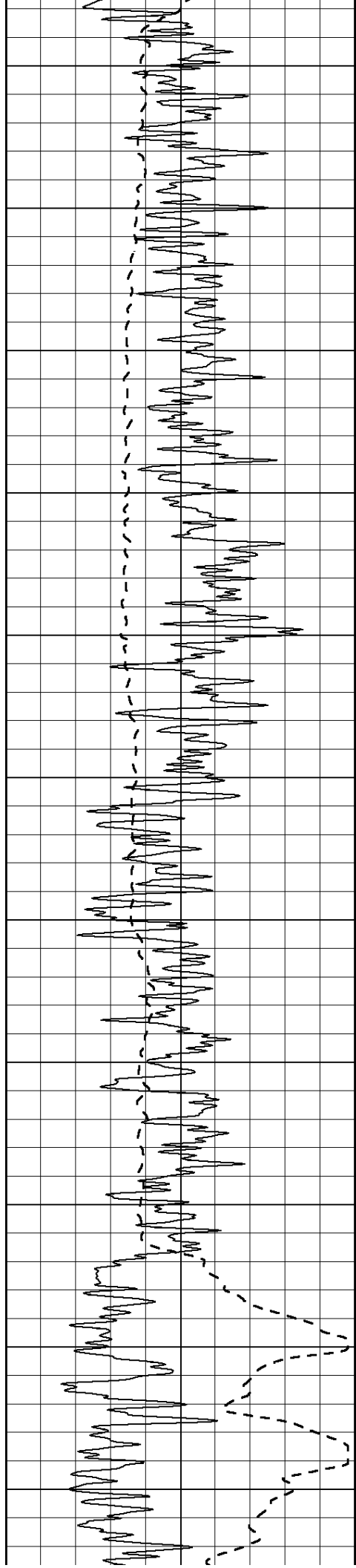
900

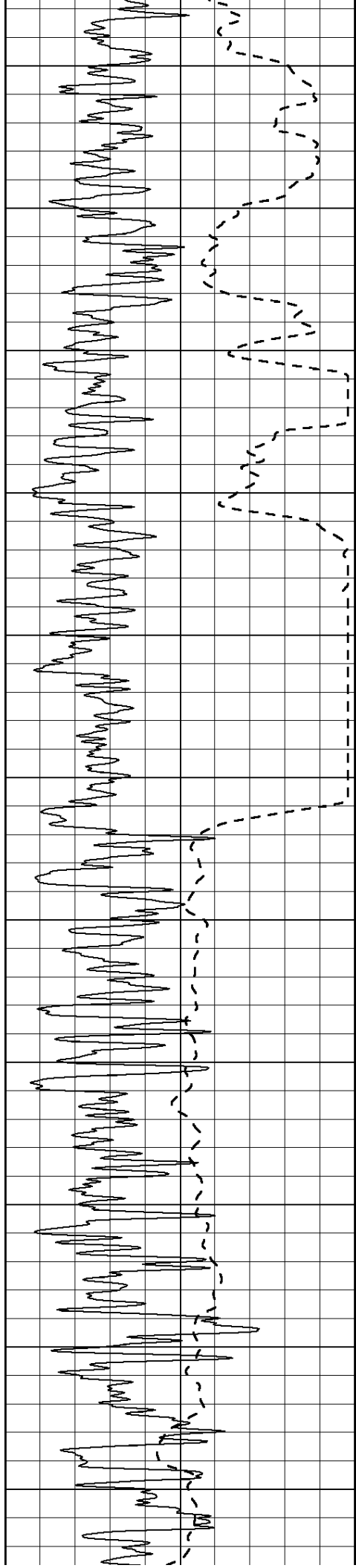
950

1000









2150

2200

2250

2300

2350

2400

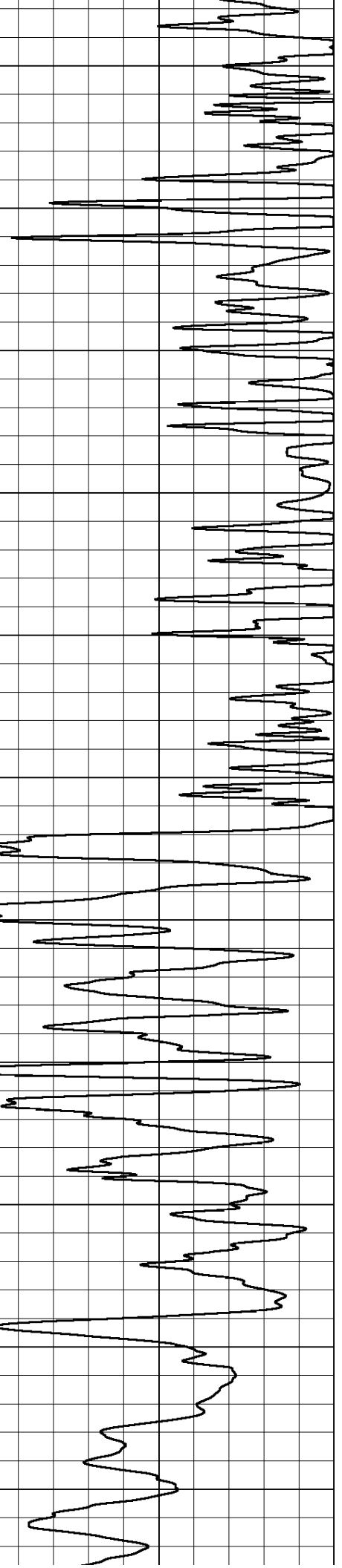
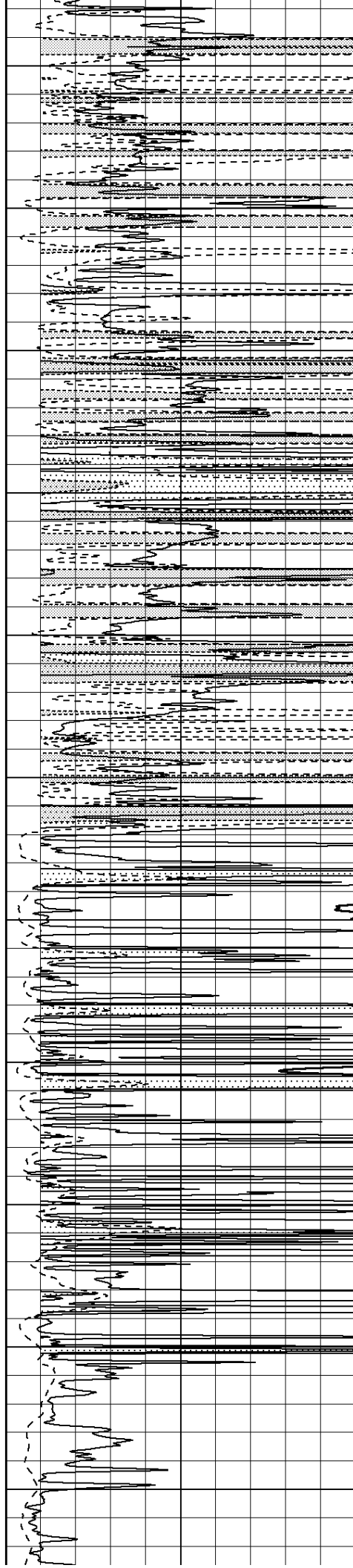
2450

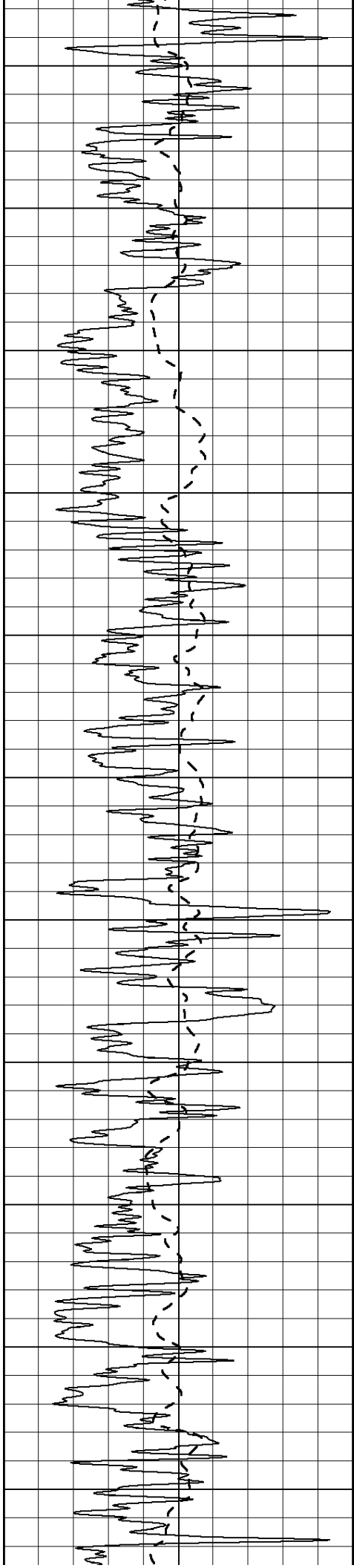
2500

2550

2600

2650





2700

2750

2800

2850

2900

2950

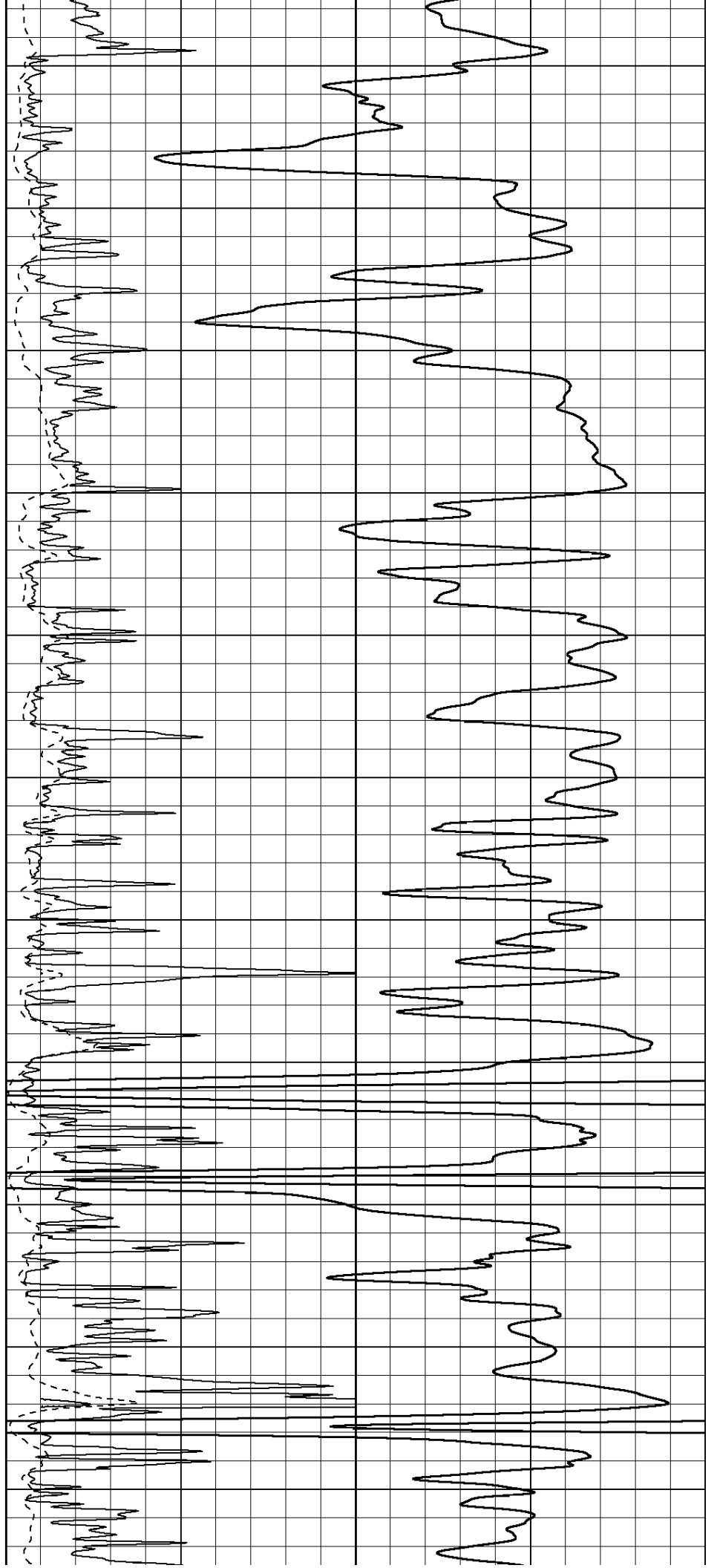
3000

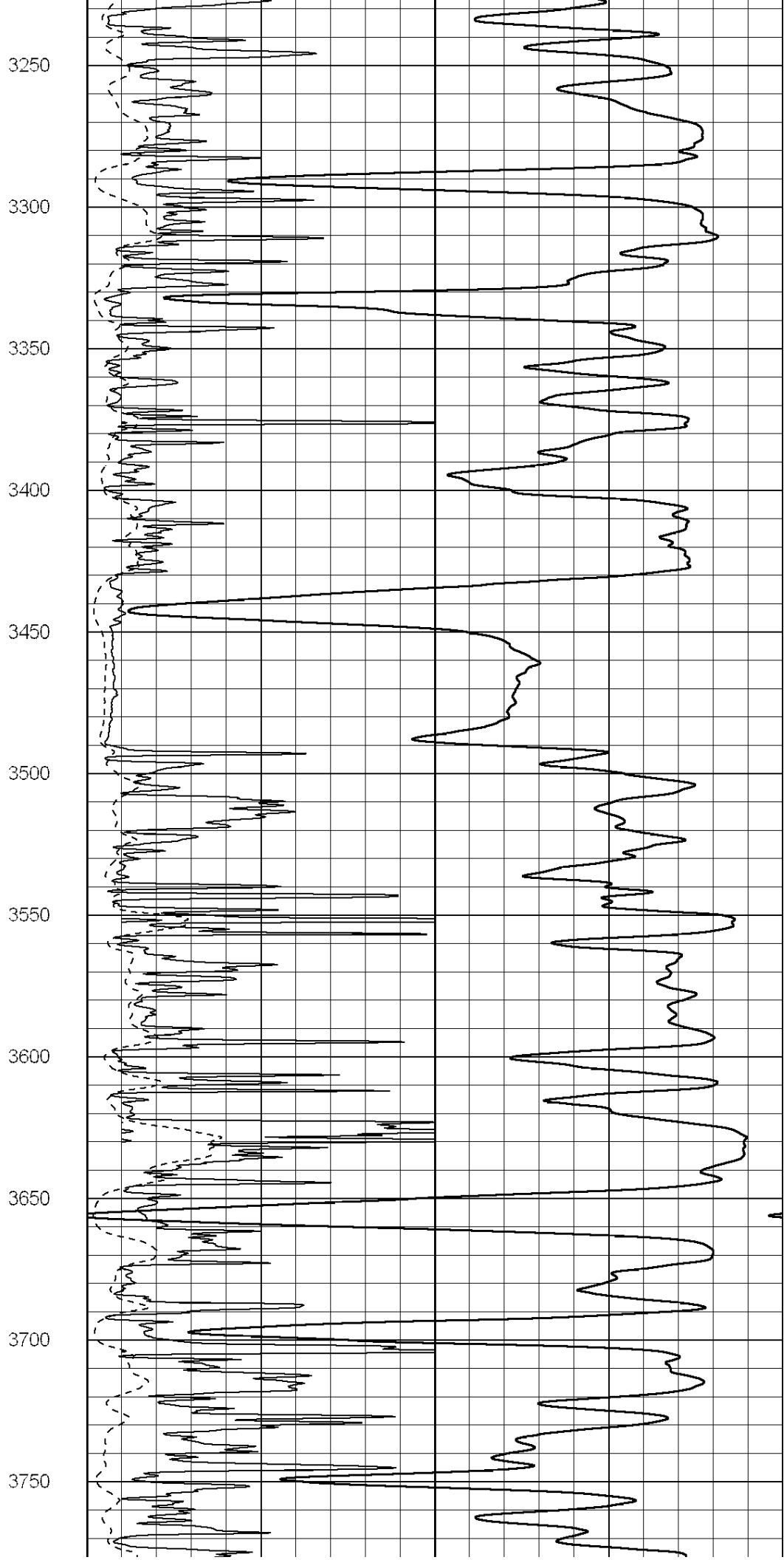
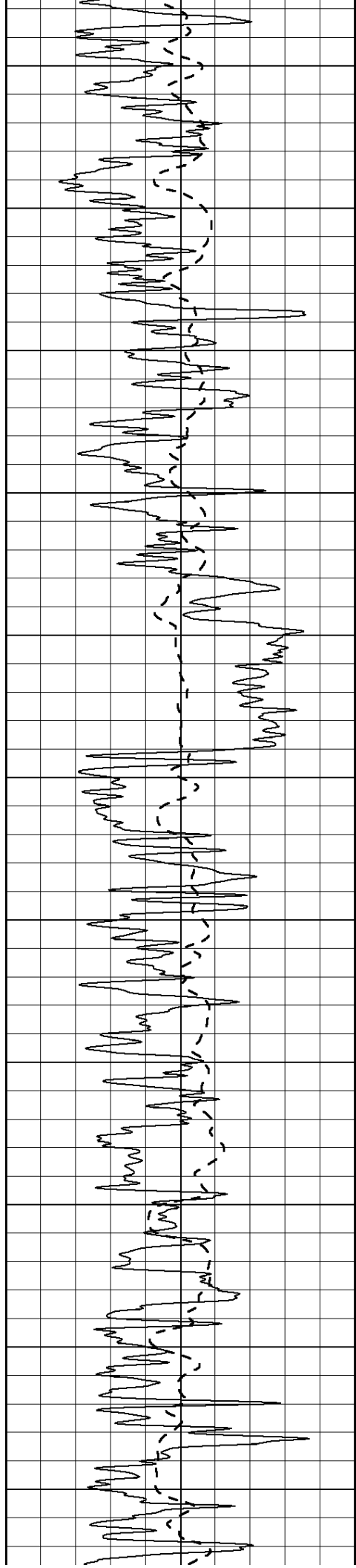
3050

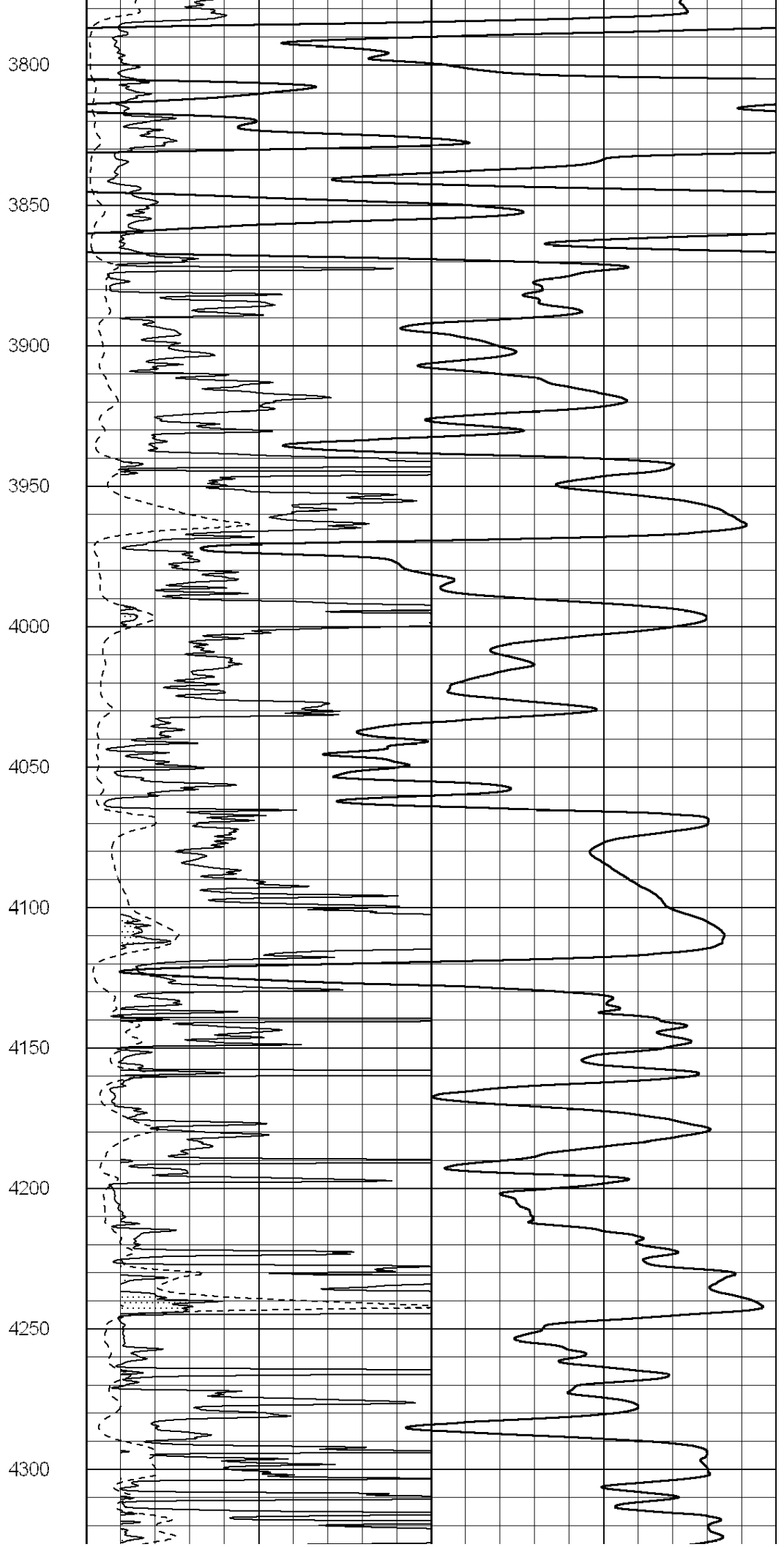
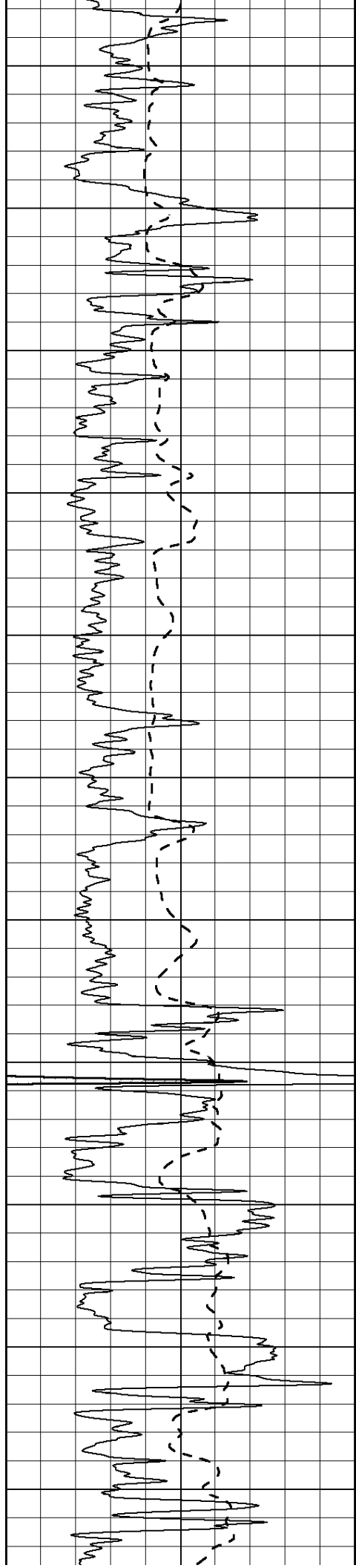
3100

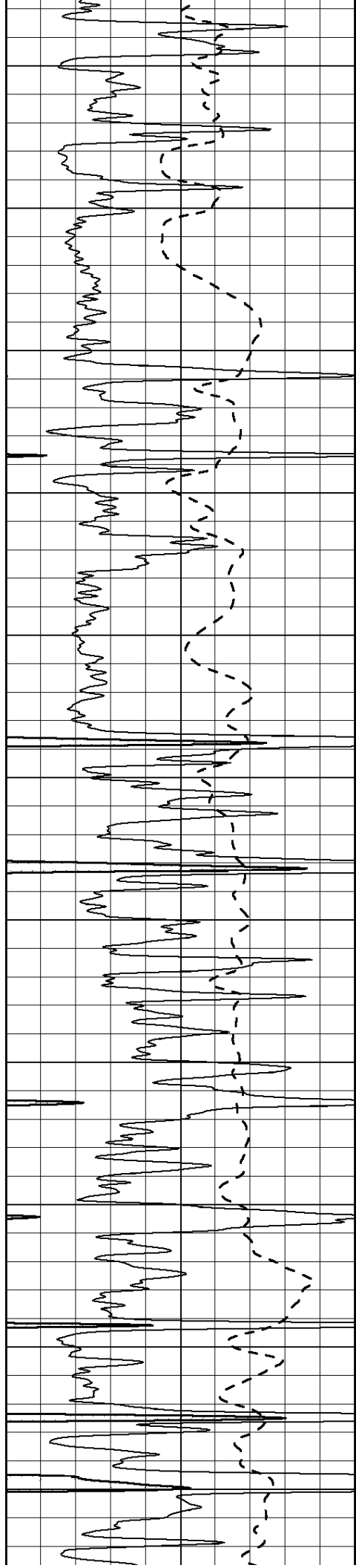
3150

3200









4350

4400

4450

4500

4550

4600

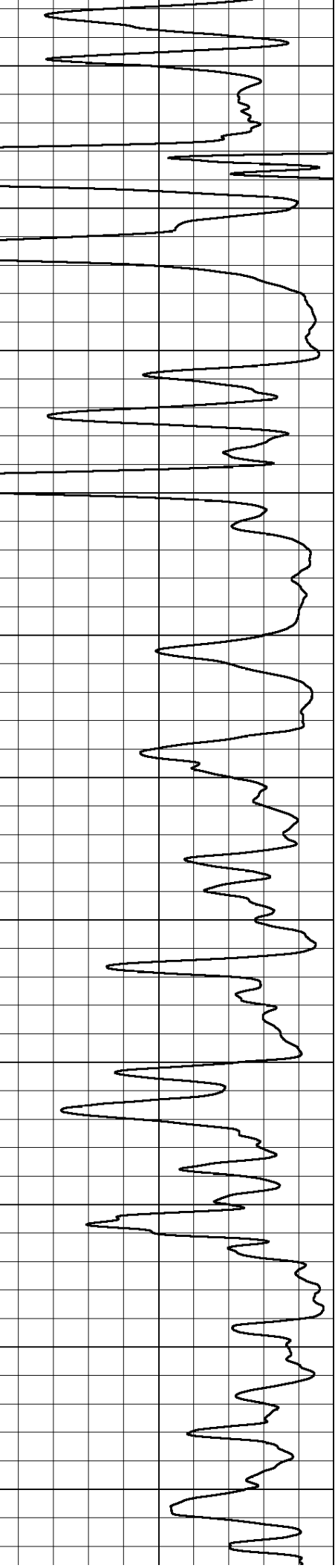
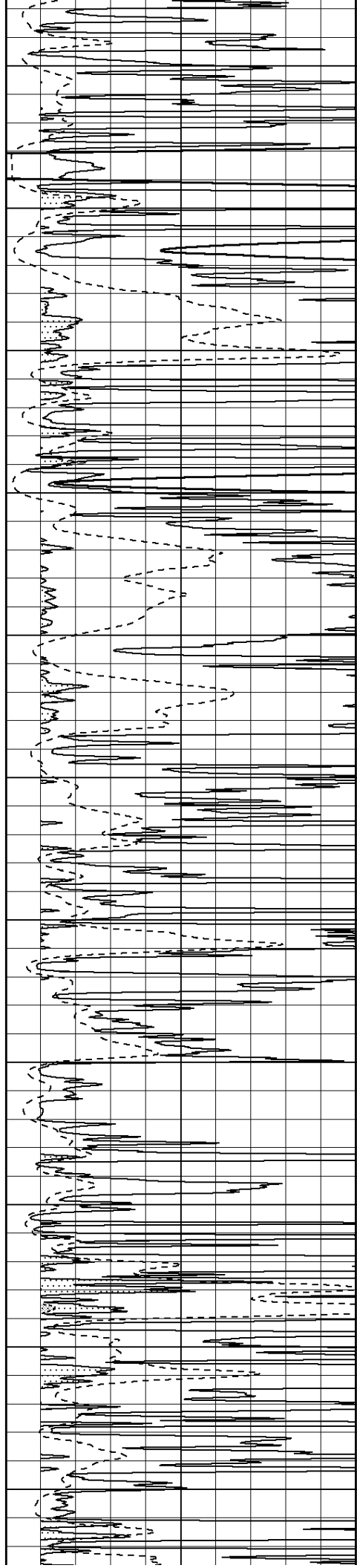
4650

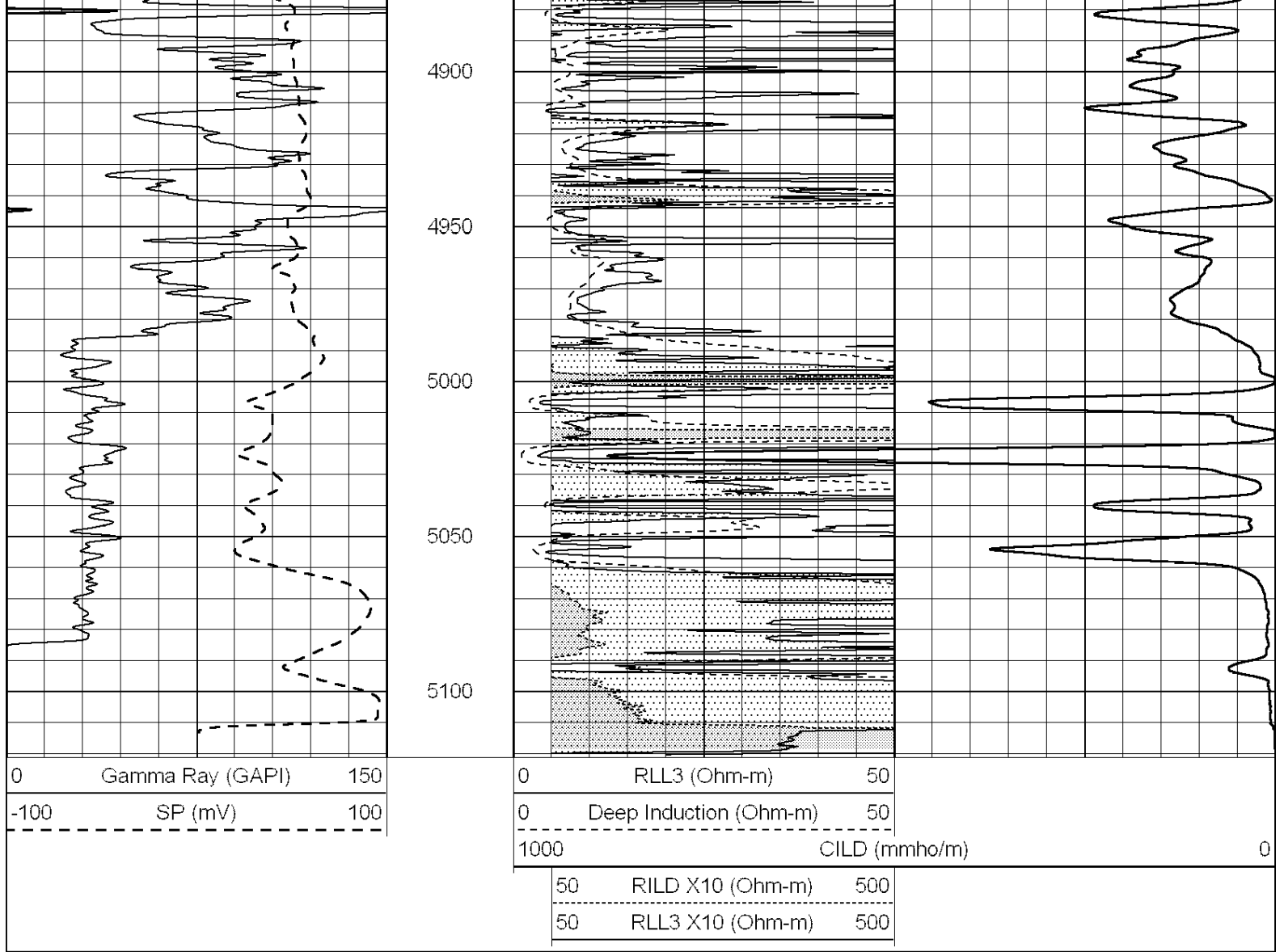
4700

4750

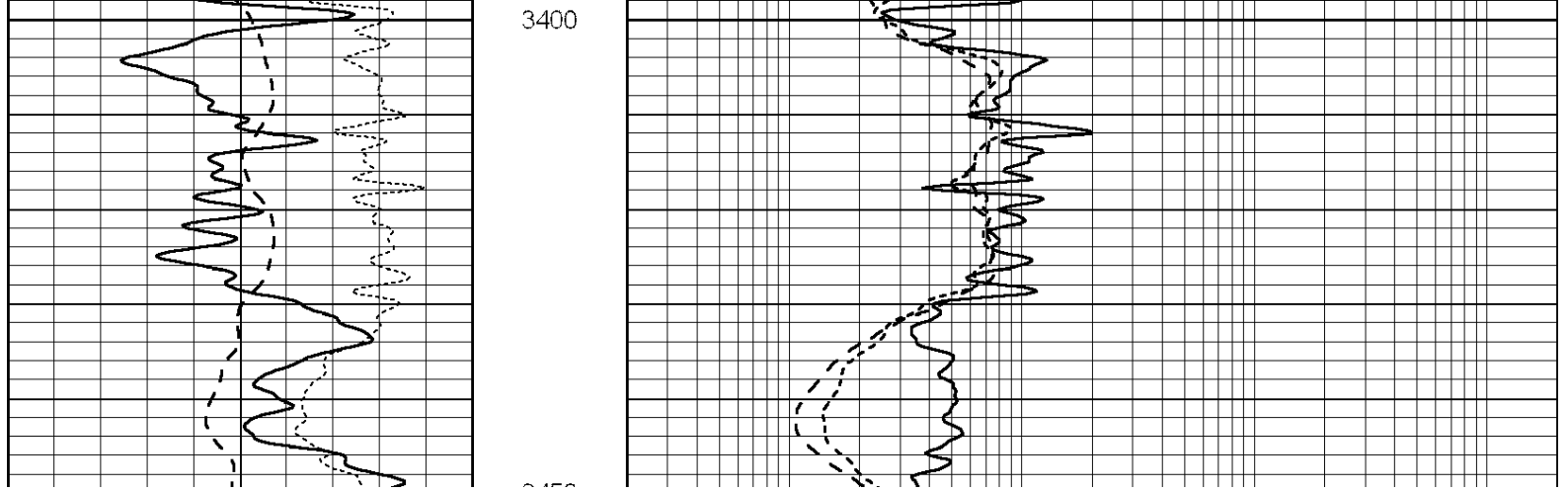
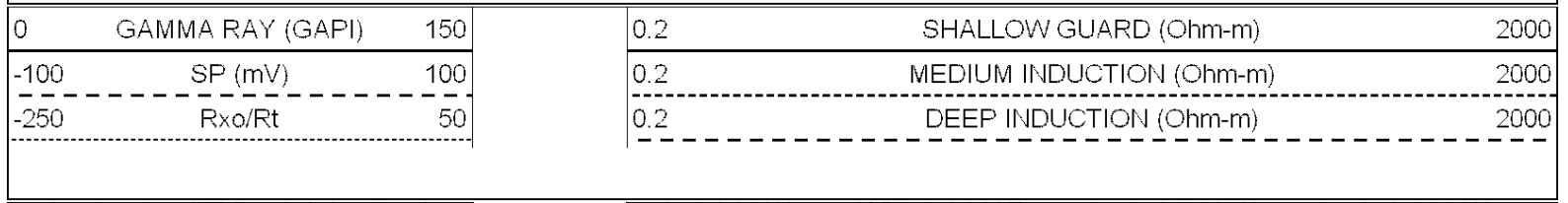
4800

4850





Database File: 009462ddn.db
 Dataset Pathname: pass3.1
 Presentation Format: _dil
 Dataset Creation: Tue Jul 10 20:46:30 2012 by Calc Open-Cased 090629
 Charted by: Depth in Feet scaled 1:240



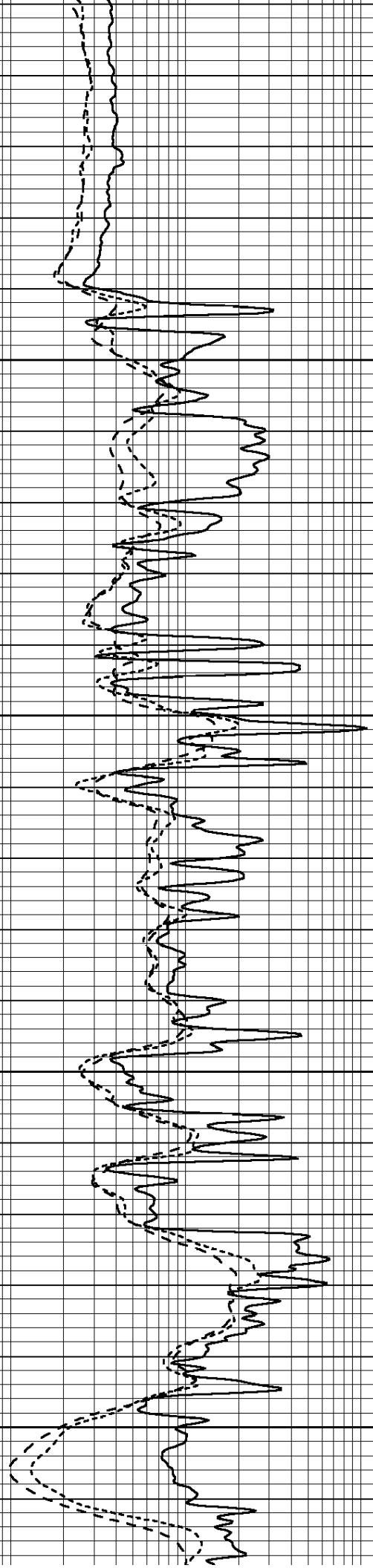
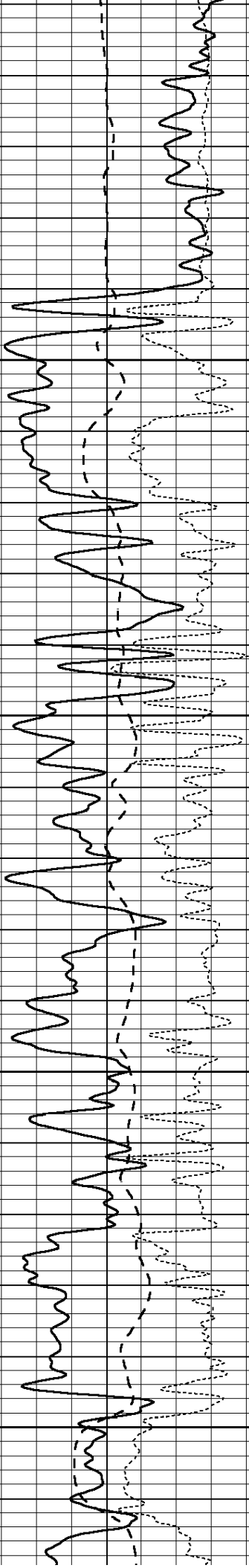
3450

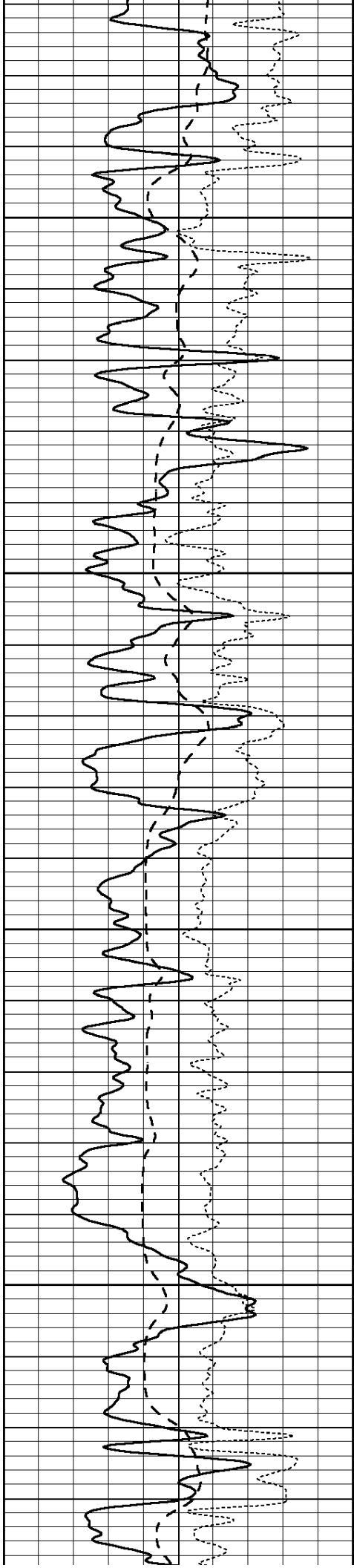
3500

3550

3600

3650



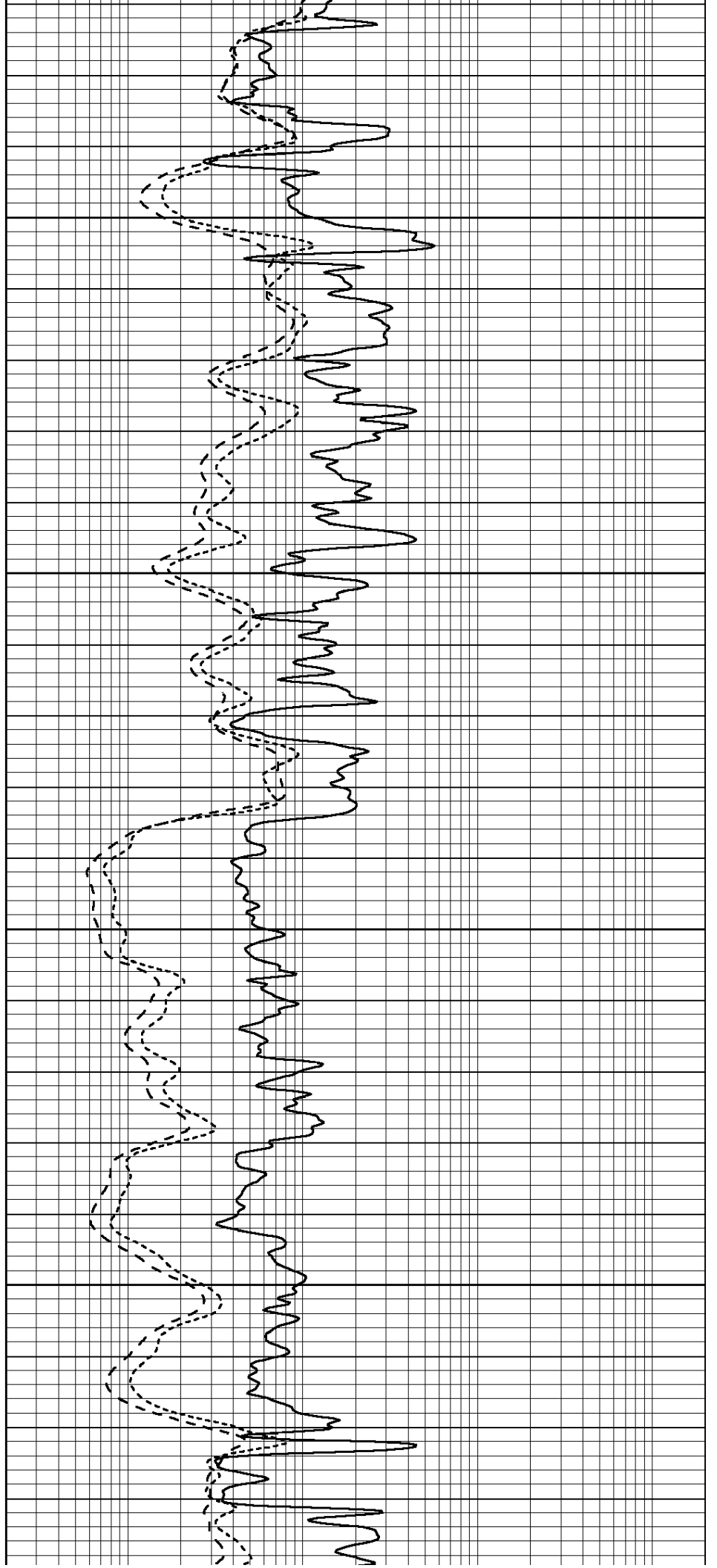


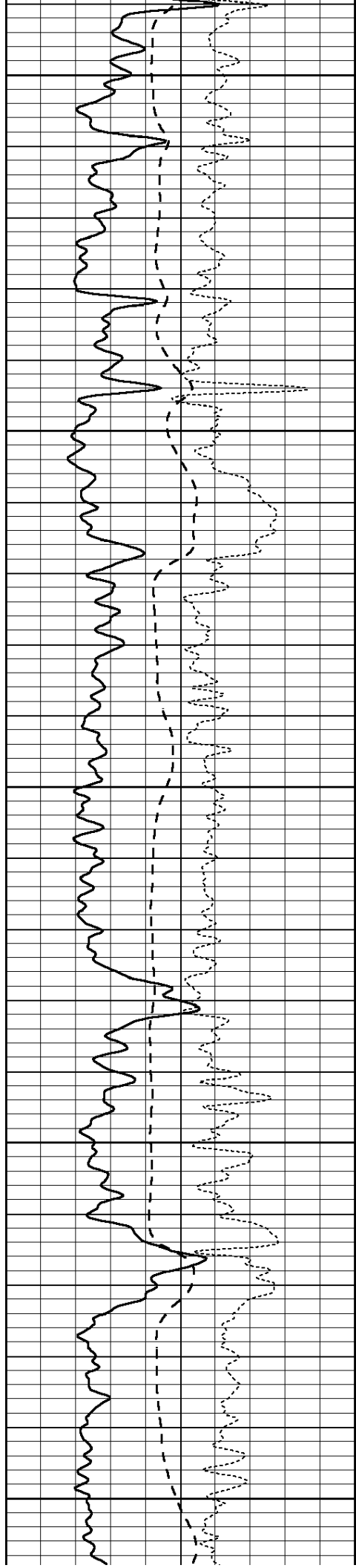
3700

3750

3800

3850





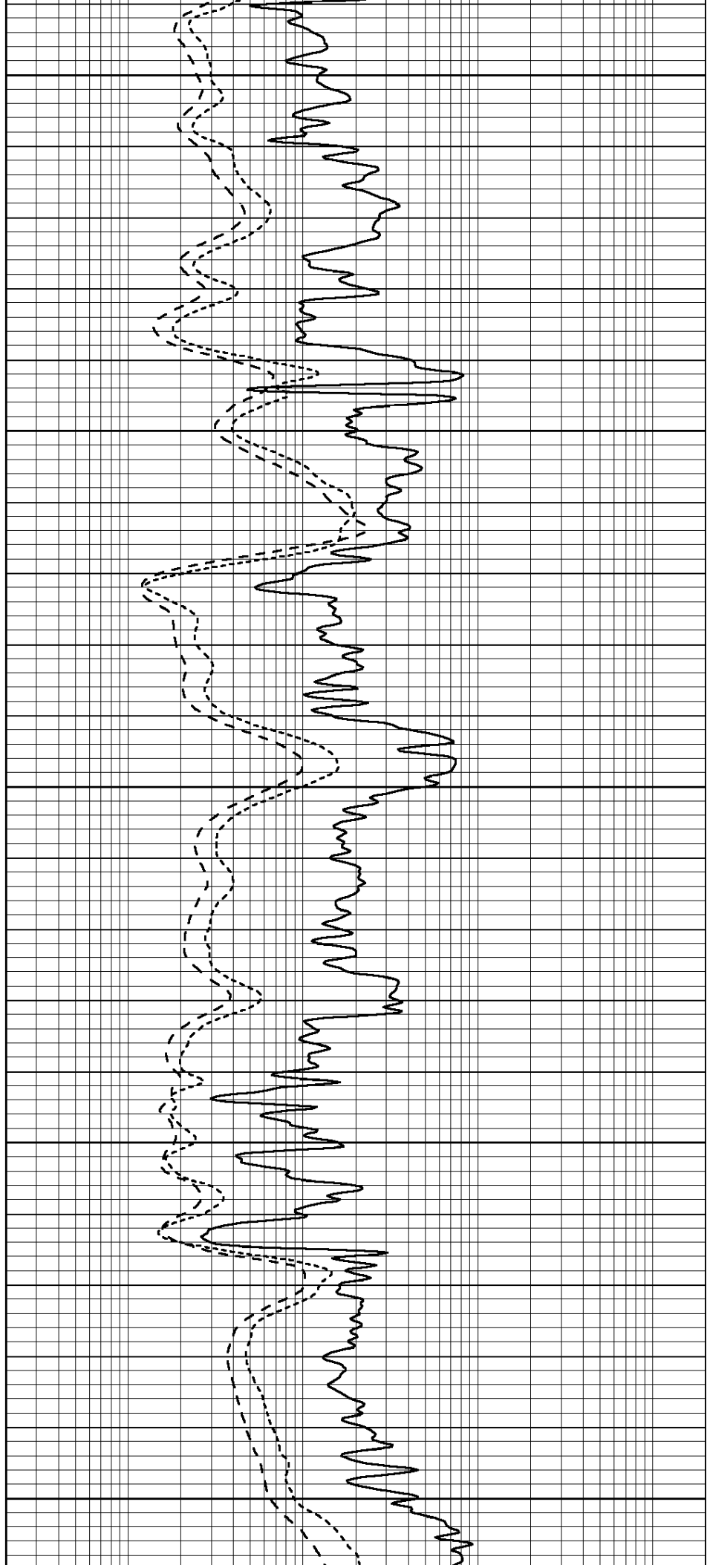
3900

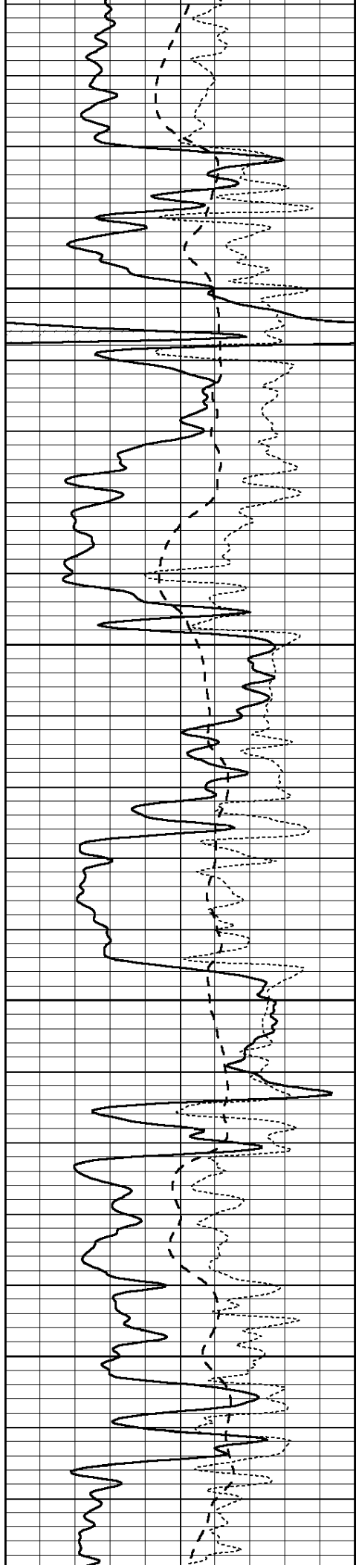
3950

4000

4050

4100



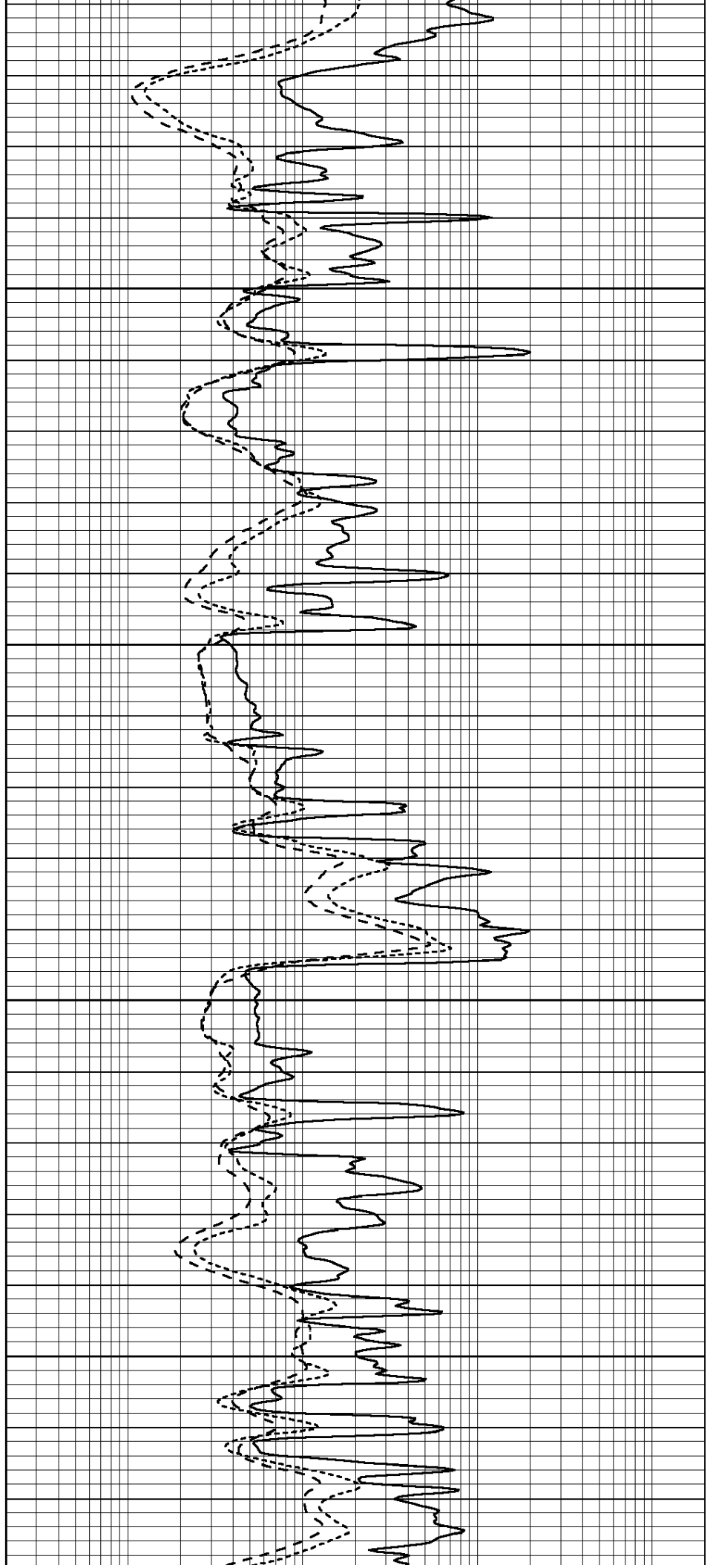


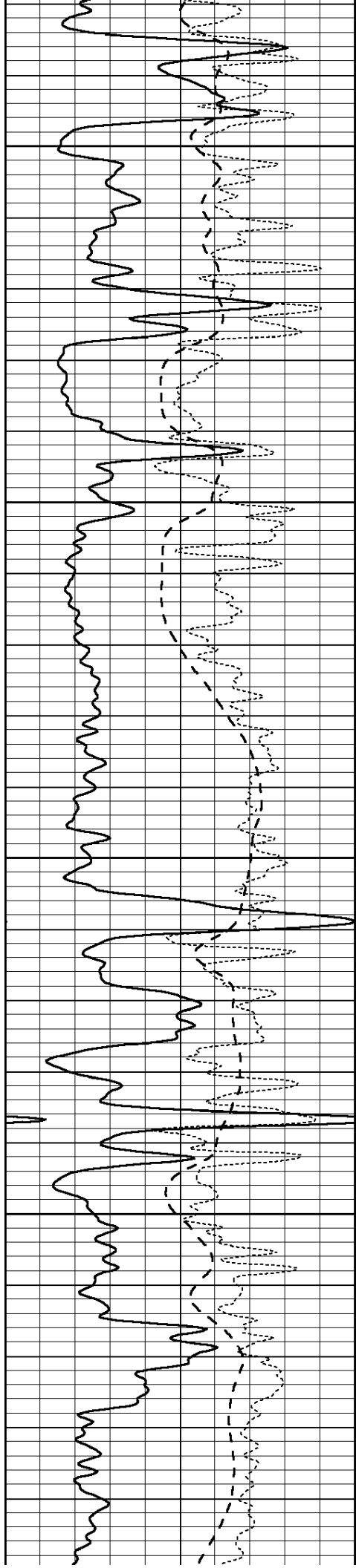
4150

4200

4250

4300





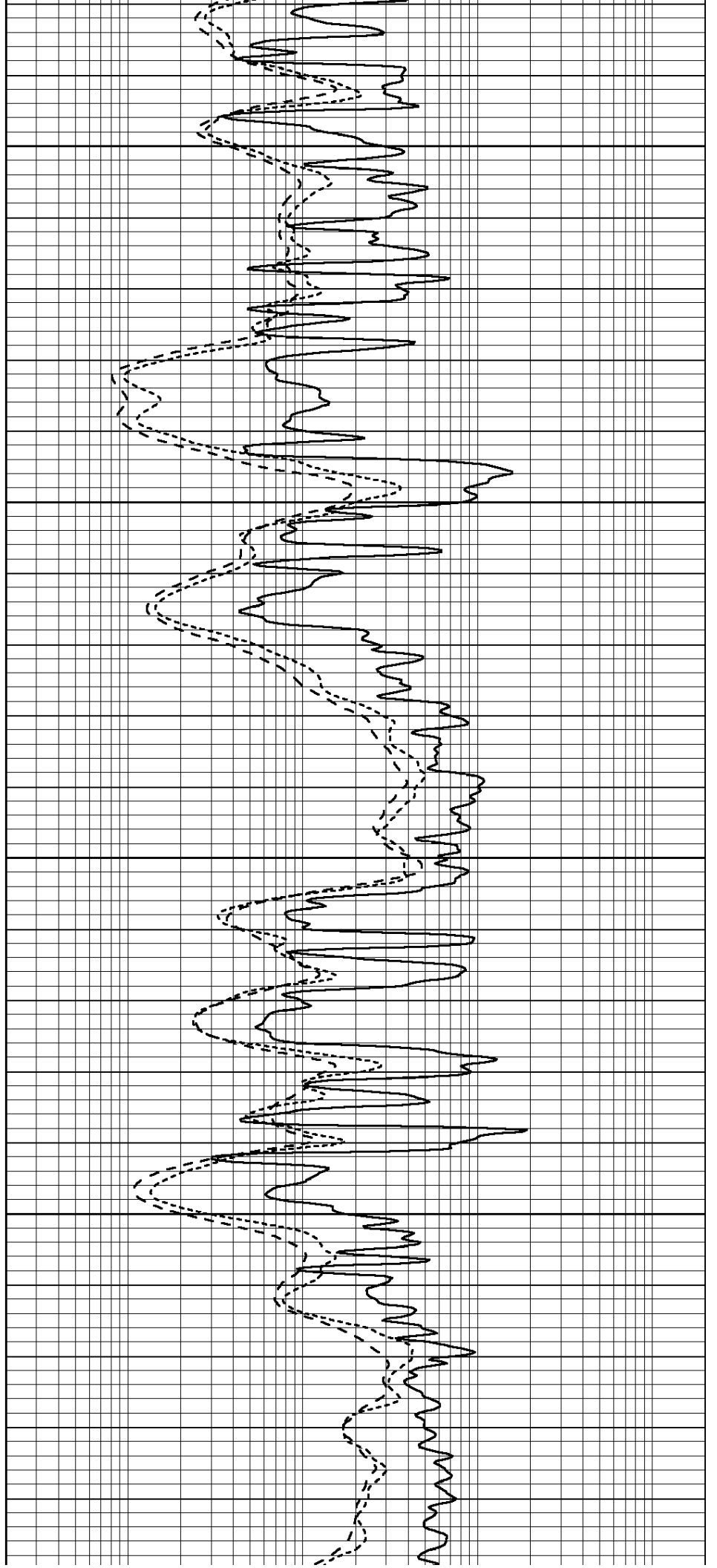
4350

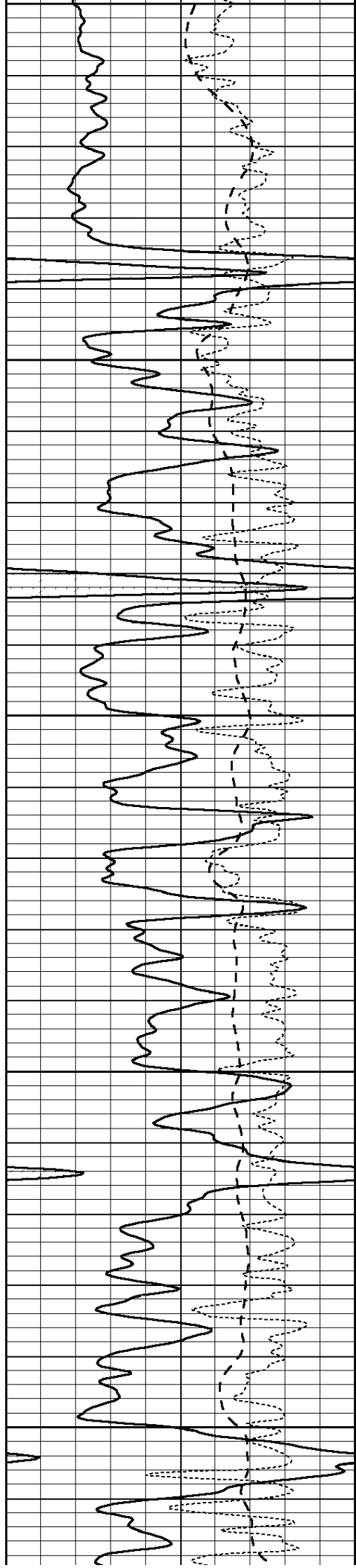
4400

4450

4500

4550





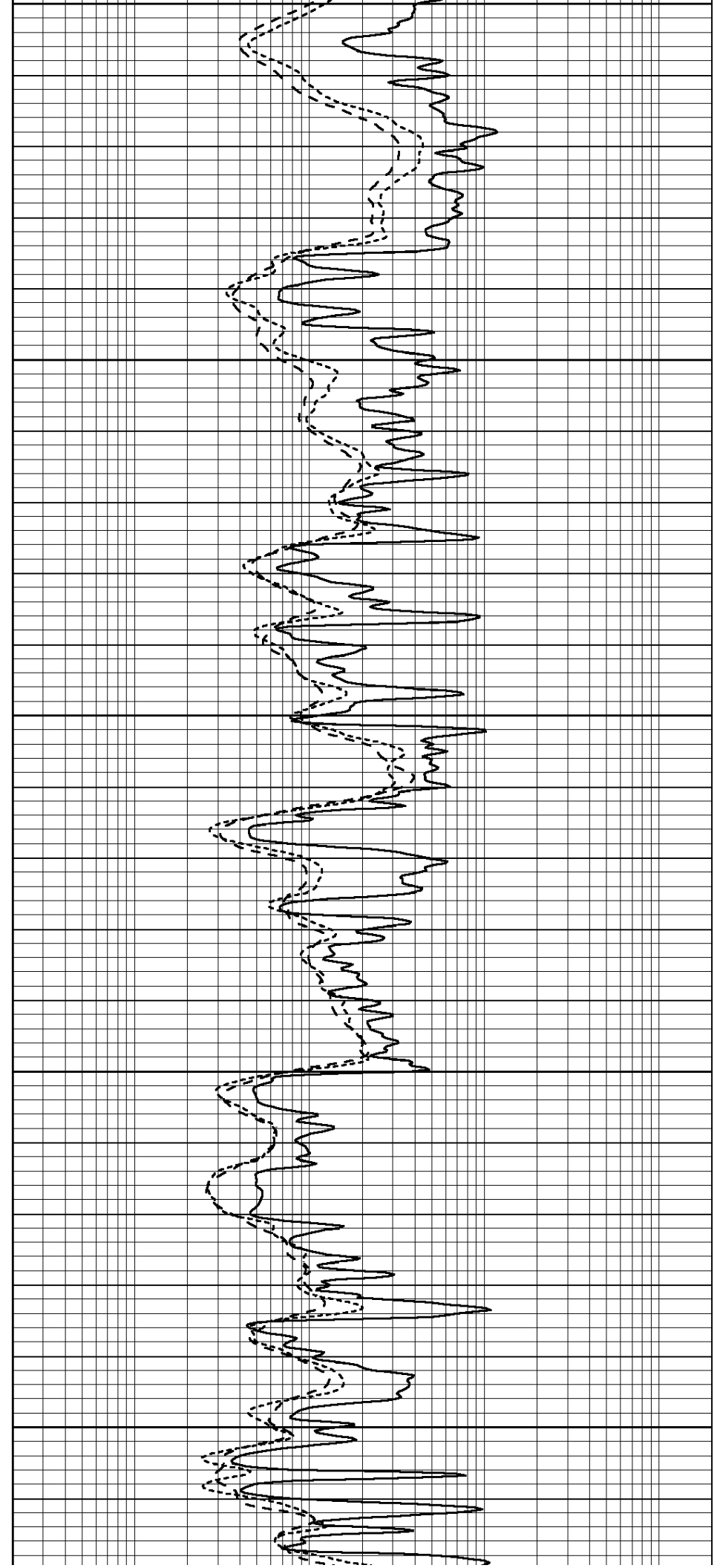
4550

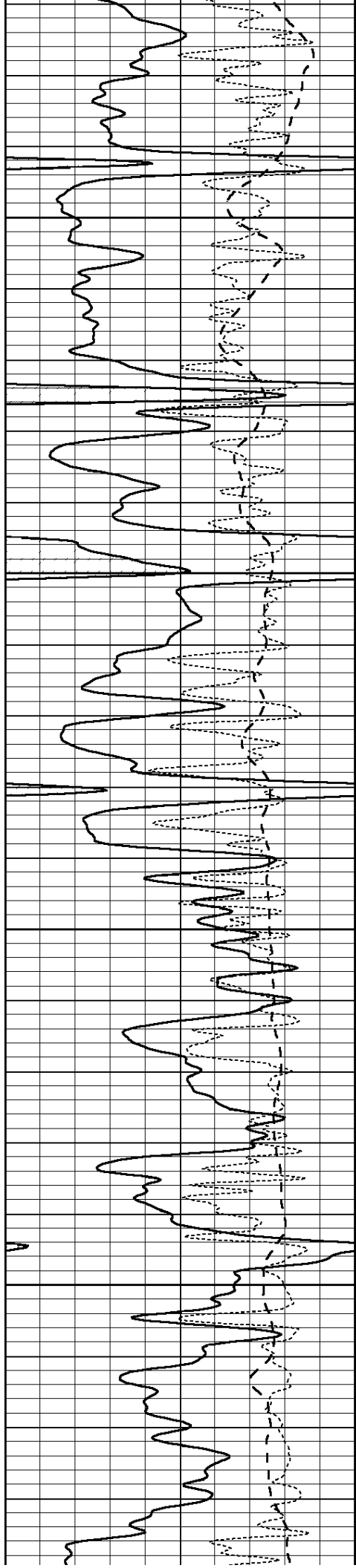
4600

4650

4700

4750



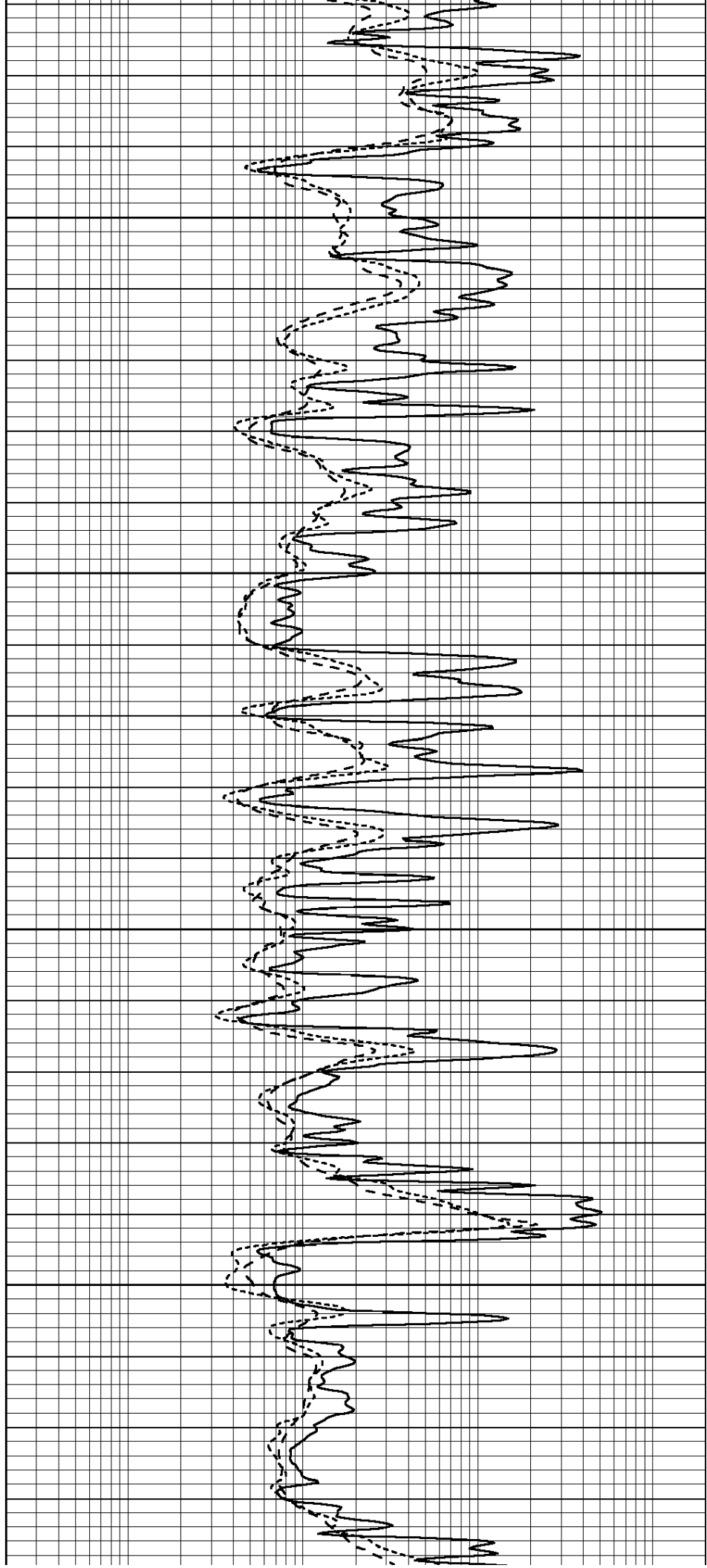


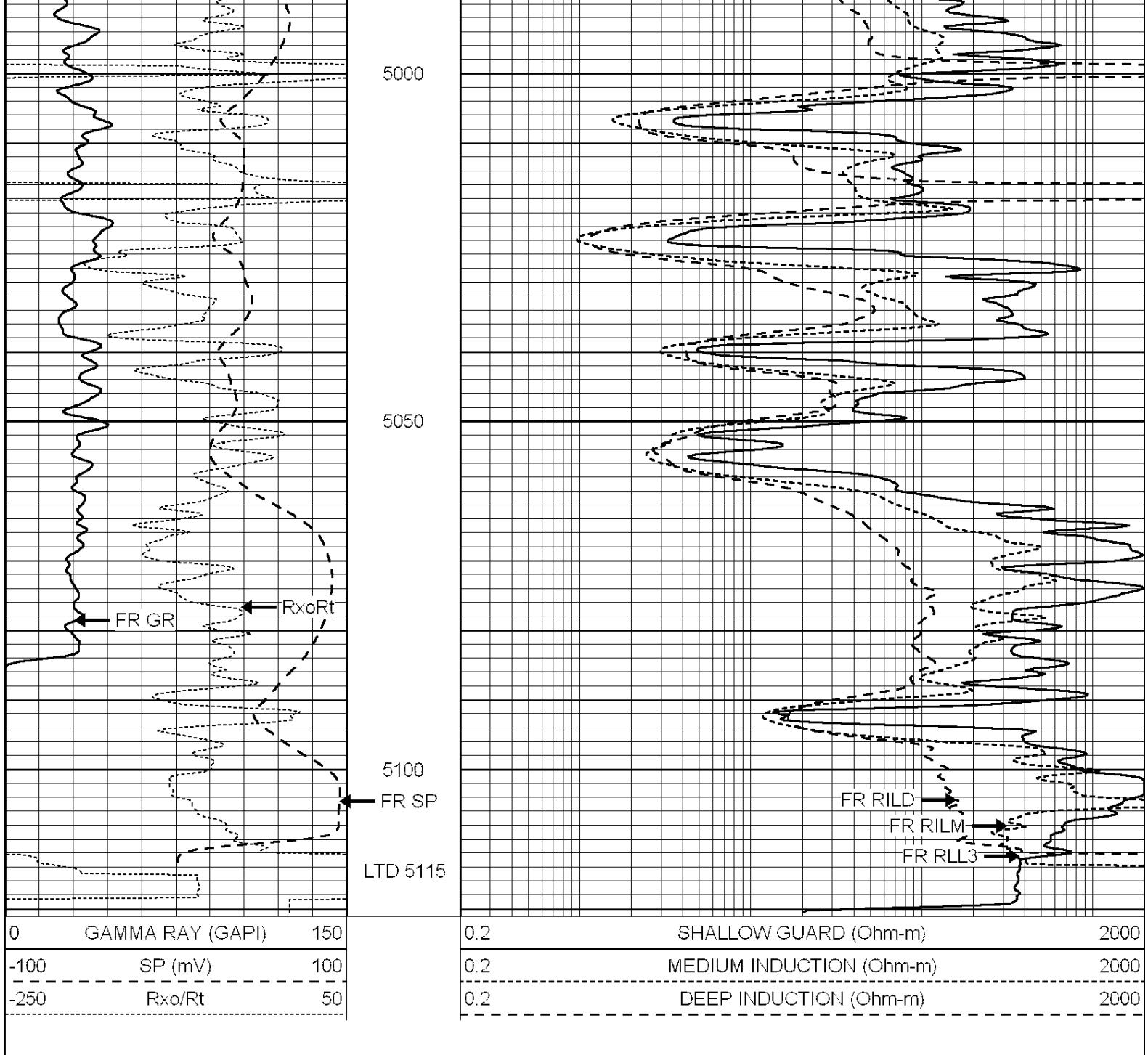
4800

4850

4900

4950



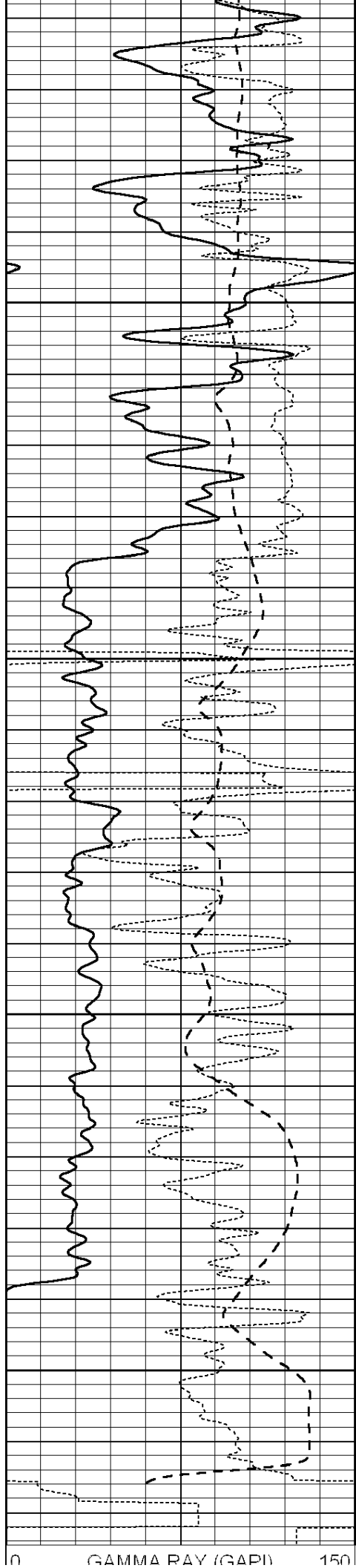


SUPERIOR
Hays,
Kansas

REPEAT SECTION

Database File: 009462ddn.db
 Dataset Pathname: pass2.1
 Presentation Format: _dil
 Dataset Creation: Tue Jul 10 19:49:14 2012 by Calc Open-Cased 090629
 Charted by: Depth in Feet scaled 1:240

0	GAMMA RAY (GAPI)	150	0.2	SHALLOW GUARD (Ohm-m)	2000
-100	SP (mV)	100	0.2	MEDIUM INDUCTION (Ohm-m)	2000
-250	Rxo/Rt	50	0.2	DEEP INDUCTION (Ohm-m)	2000



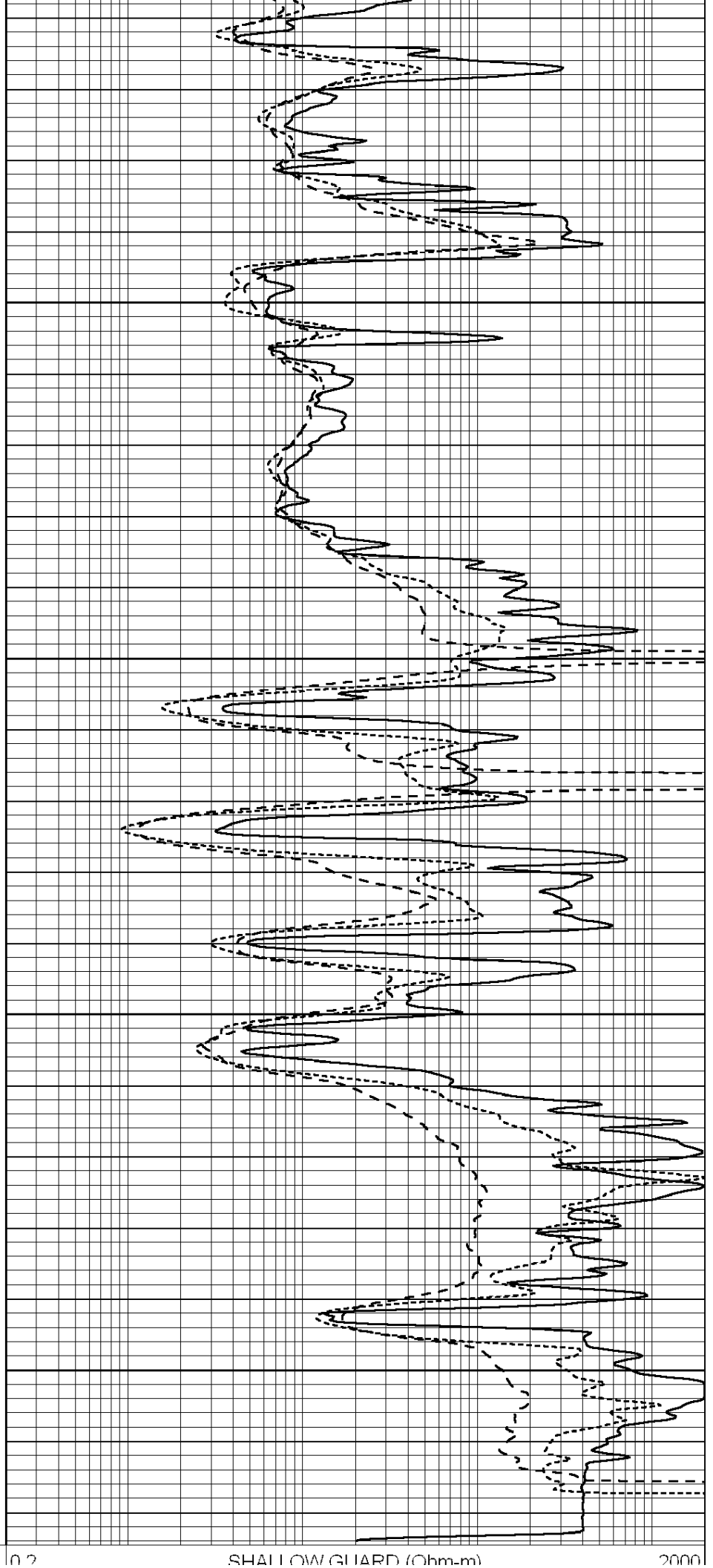
4950

5000

5050

5100

0 GAMMA RAY (GAPI) 150



0 2 SHALLOW GUARD (Ohm-m) 2000

-100	SP (mV)	100
-250	Rxo/Rt	50

0.2	MEDIUM INDUCTION (Ohm-m)	2000
0.2	DEEP INDUCTION (Ohm-m)	2000

Calibration Report

Database File: 009462ddn.db
 Dataset Pathname: pass3.2
 Dataset Creation: Tue Jul 10 21:34:27 2012 by Calc Open-Cased 090629

Dual Induction Calibration Report

Serial-Model: PROBE8-DILG
 Surface Cal Performed: Fri Aug 01 06:33:19 2008
 Downhole Cal Performed: Mon Jul 28 11:08:27 2008
 After Survey Verification Performed: Mon Jul 28 11:08:27 2008

Surface Calibration

Loop:	Readings			References			Results	
	Air	Loop		Air	Loop		m	b
Deep	0.015	0.648	V	0.000	400.000	mmho/m	632.616	-9.730
Medium	0.029	0.796	V	0.000	464.000	mmho/m	605.049	-17.680
Internal:	Zero	Cal		Zero	Cal		m	b
Deep	0.017	0.657	V	0.000	400.000	mmho/m	625.153	-10.619
Medium	0.016	0.757	V	0.000	464.000	mmho/m	625.992	-9.739

Downhole Calibration

	Readings			References			Results	
	Zero	Cal		Zero	Cal		m'	b'
Deep	0.000	0.000	mmho/m	2.011	405.777	mmho/m	1.000	0.000
Medium	0.000	0.000	mmho/m	7.590	503.393	mmho/m	1.000	0.000
LL3		7.500	V		1500.000	Ohm-m		
		0.000	V		20.000	Ohm-m		
		-7.200	V		3800.000	mmho-m		

After Survey Verification

	Readings			Targets			Results	
	Zero	Cal		Zero	Cal		m'	b'
Deep	0.000	0.000	mmho/m	0.000	0.000	mmho/m	0.000	0.000
Medium	0.000	0.000	mmho/m	0.000	0.000	mmho/m	0.000	0.000
LL3		1.000	Ohm-m		1.000	Ohm-m		
		0.000	Ohm-m		0.000	Ohm-m		
		1.000	mmho-m		1.000	mmho-m		

Compensated Density Calibration Report

Serial-Model: GEAR4-GEARHART
 Source / Verifier: 143 / 143
 Master Calibration Performed: Mon Mar 19 19:07:19 2012

Master Calibration

	Density		Far Detector	Near Detector	
Magnesium	1.710	g/cc	1015.91	497.51	cps
Aluminum	2.600	g/cc	227.67	350.20	cps

Spine Angle = 76.79

Density/Spine Ratio = 0.579

	Size		Reading	
Small Ring	8.00	in	3.21	V
Large Ring	14.00	in	5.46	V

Compensated Neutron Calibration Report

Serial Number: 6I
Tool Model: G

CALIBRATION						
Detector	Readings		Target		Normalization	
Short Space	1.00	cps	1.00	cps	1.0000	
Long Space	1.00	cps	1.00	cps	1.0000	

Gamma Ray Calibration Report

Serial Number: #8
Tool Model: OPEN
Performed: Mon Jun 13 16:56:43 2011

Calibrator Value: 150.0 GAPI

Background Reading: 0.0 cps
Calibrator Reading: 175.0 cps

Sensitivity: 0.8371 GAPI/cps