



**COMPLETION
& PRODUCTION
SERVICES CO.**

**MICRO
LOG**

Company PELICAN HILL OIL & GAS, INC.
Well NELSON #4-7
Field WILDCAT
County TREGO
State KANSAS

Company PELICAN HILL OIL & GAS, INC.
Well NELSON #4-7
Field WILDCAT
County TREGO State KANSAS

Location: 335' FSL & 335' FWL
NE-SW-SW-SW
API # : 15-195-22805-0000
SEC 7 TWP 11S RGE 21W
Permanent Datum GROUND LEVEL Elevation 2165
Log Measured From KELLY BUSHING 9' A.G.L.
Drilling Measured From KELLY BUSHING
Other Services
CDL/CNL
DIL/SON/FF
Elevation
K.B. 2174
D.F. 2172
G.L. 2165

Date	10/1/12
Run Number	TWO
Depth Driller	3824
Depth Logger	3825
Bottom Logged Interval	3807
Top Log Interval	3100
Casing Driller	8 5/8" @ 267
Casing Logger	272
Bit Size	7 7/8
Type Fluid in Hole	CHEMICAL MUD
Density / Viscosity	9.0/43
pH / Fluid Loss	11.5/6.8
Source of Sample	FLOWLINE
Rin @ Meas. Temp	1.00 @ 75F
Rmf @ Meas. Temp	0.75 @ 75F
Rmc @ Meas. Temp	0.90 @ 75F
Source of Rmf / Rmc	MEASURED
Rin @ BHT	.65 @ 114F
Time Circulation Stopped	2 HOURS
Time Logger on Bottom	
Maximum Recorded Temperature	114F
Equipment Number	680
Location	HAYS, KS.
Recorded By	JASON CAPPELLUCCI
Witnessed By	MARC DOWNING
IAN MABB	

<<< Fold Here >>>

All interpretations are opinions based on inferences from electrical or other measurements and we cannot and do not guarantee the accuracy or correctness of any interpretation, and we shall not, except in the case of gross or willful negligence on our part, be liable or responsible for any loss, costs, damages, or expenses incurred or sustained by anyone resulting from any interpretation made by any of our officers, agents or employees. These interpretations are also subject to our general terms and conditions set out in our current Price Schedule.

Comments

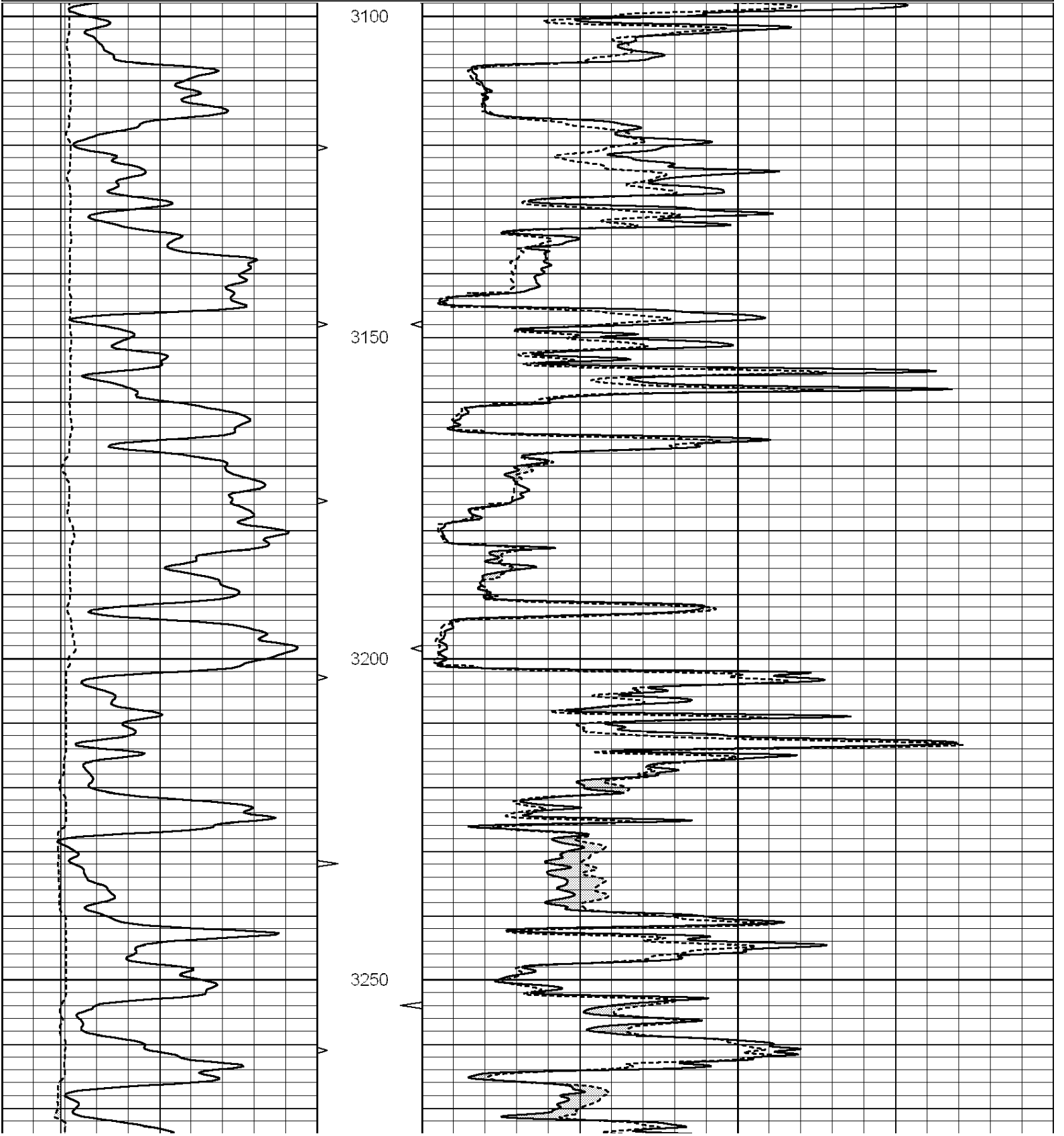
THANK YOU FOR USING SUPERIOR WELL SERVICE (785) 628-6395
DIRECTIONS
I 70 & RIGA EXIT - N. TO RD. A - 1 1/2 W. - 1 S. TO CURVE - 1 W. TO CURVE
1 S. - E. INTO

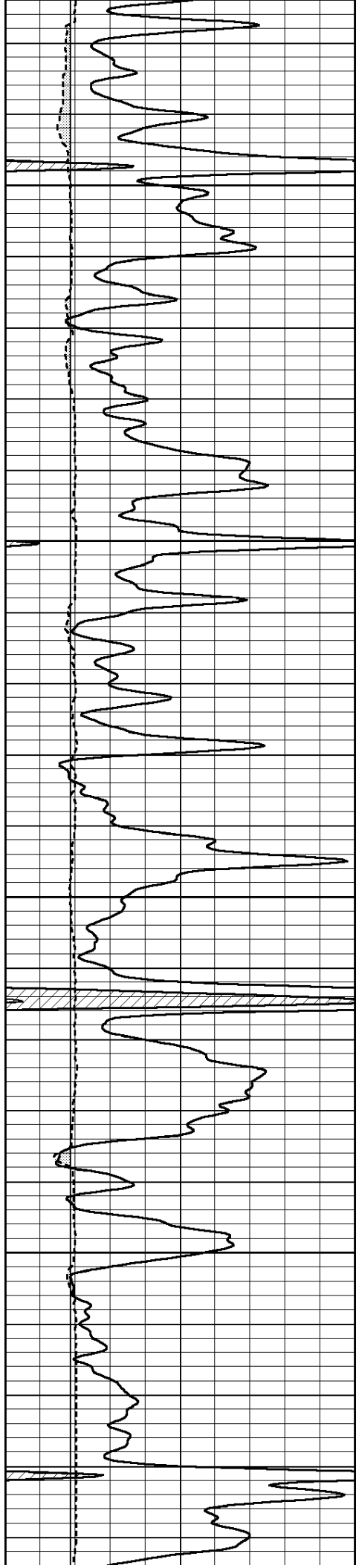


MAIN SECTION

Database File: 009741ddn.db
 Dataset Pathname: pass7
 Presentation Format: _micro
 Dataset Creation: Thu Oct 04 10:09:29 2012 by Calc Open-Cased 090629
 Charted by: Depth in Feet scaled 1:240

0	GAMMA RAY (GAPI)	150	ABHV	0	MEL1.5 (Ohm-m)	40
6	CALIPER (in)	16	10 (ft3)	0 0	MEL2.0 (Ohm-m)	40
			TBHV			
			0 (ft3)	10		



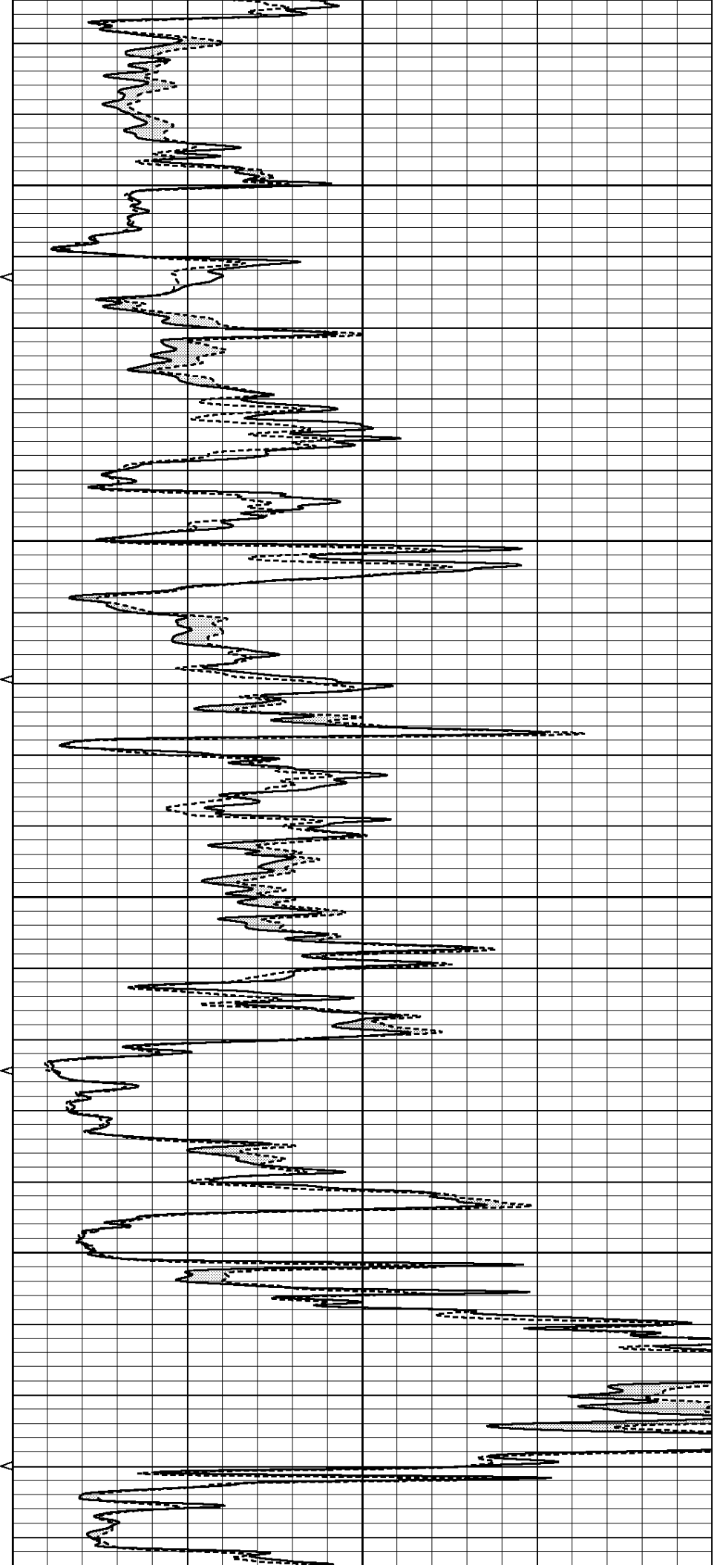


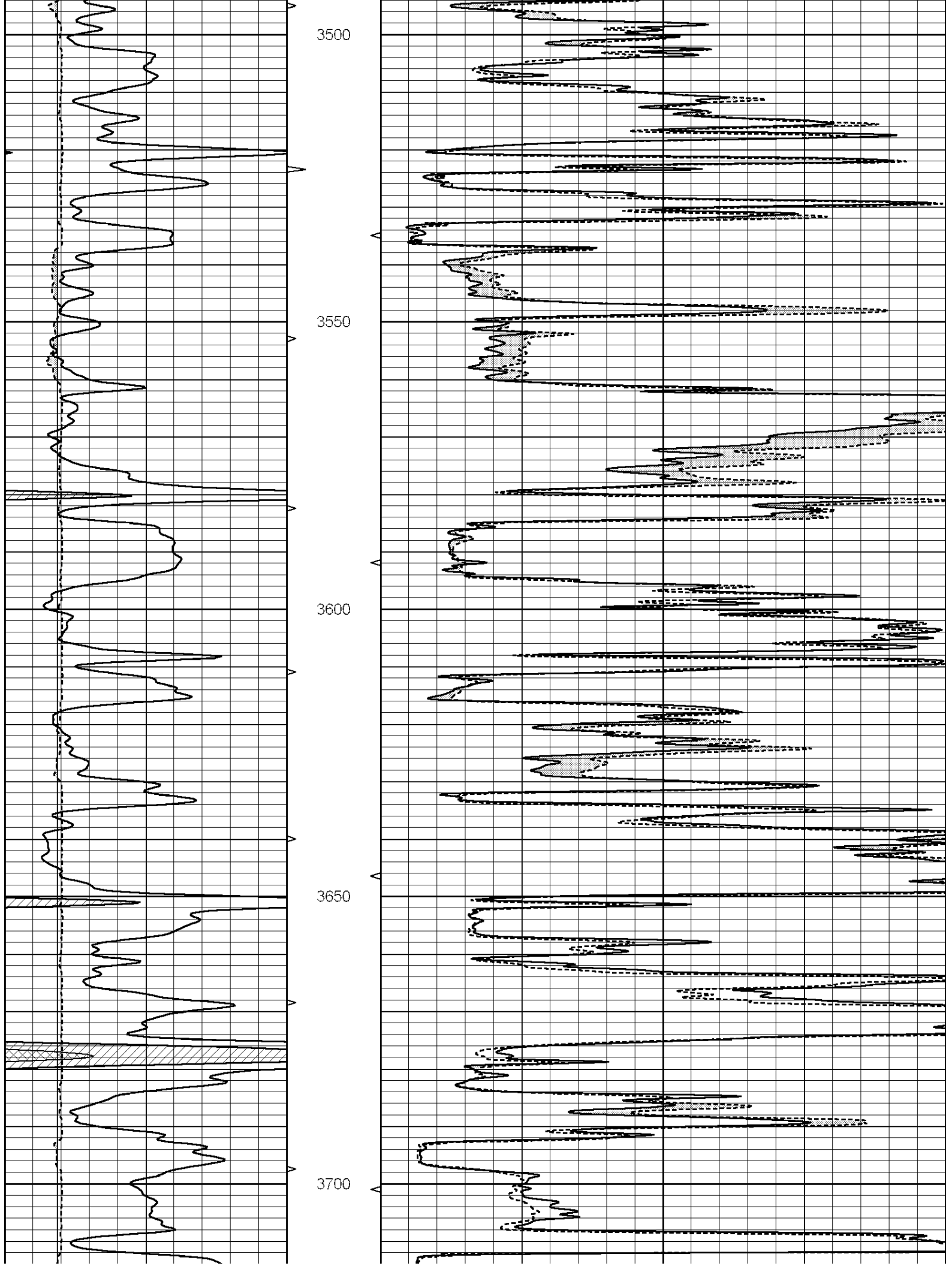
3300

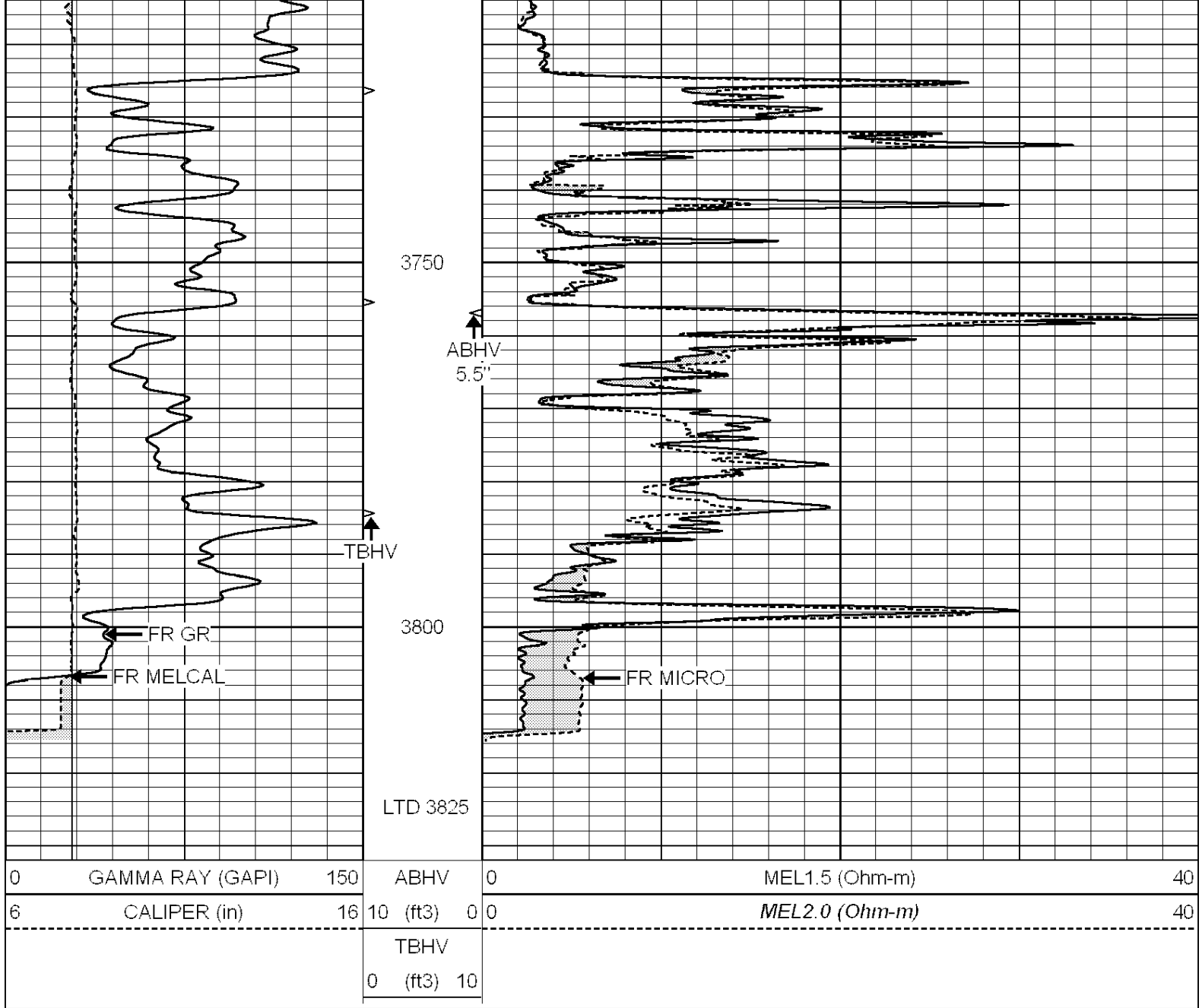
3350

3400

3450



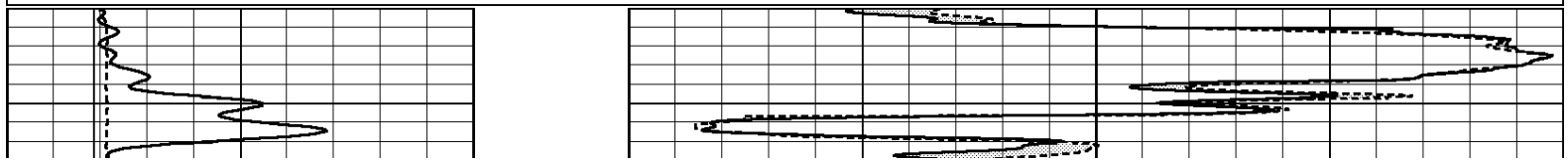


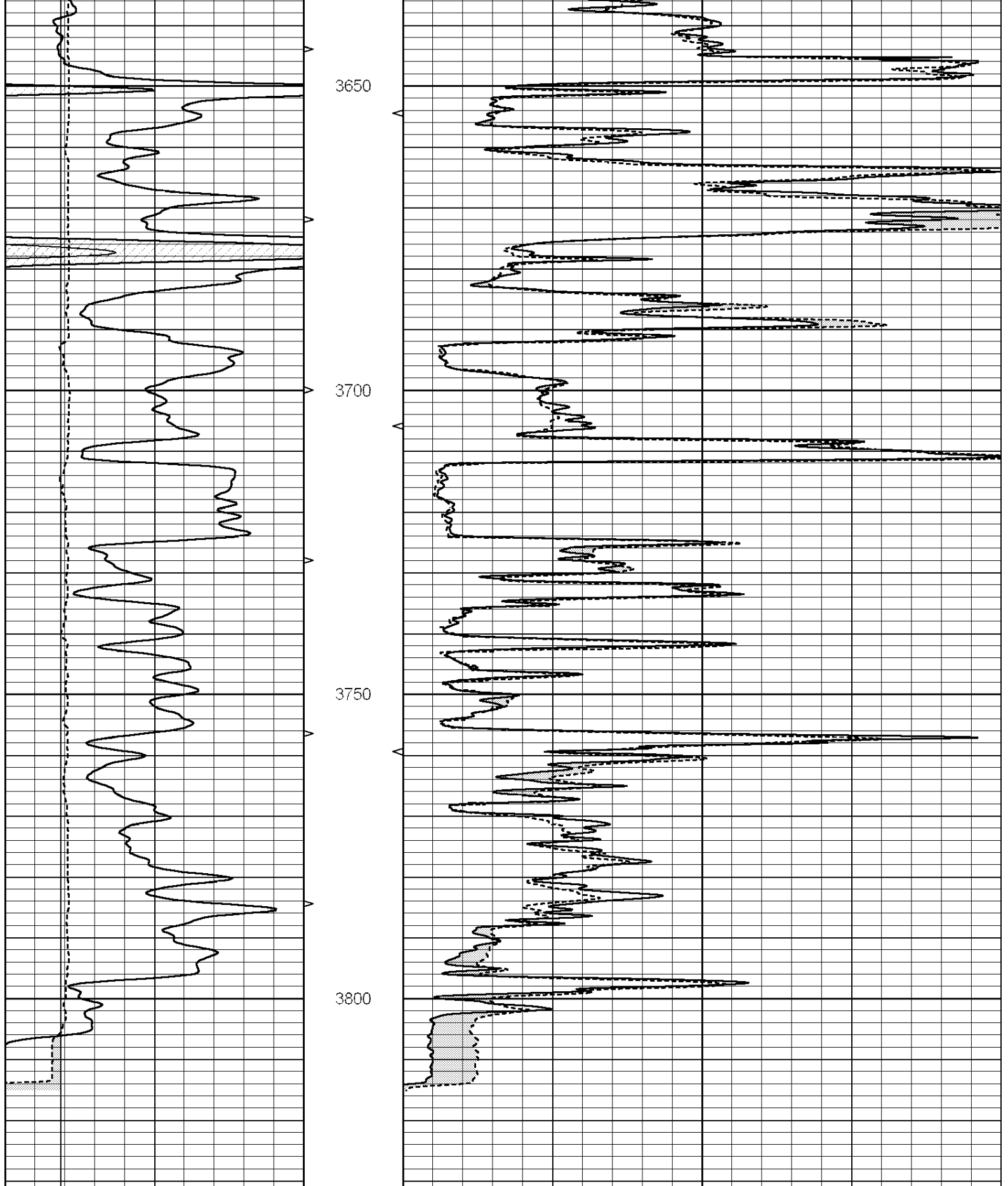


REPEAT SECTION

Database File: 009741ddn.db
 Dataset Pathname: pass5.2
 Presentation Format: _micro
 Dataset Creation: Thu Oct 04 10:33:25 2012 by Calc Open-Cased 090629
 Charted by: Depth in Feet scaled 1:240

0	GAMMA RAY (GAPI)	150	ABHV	0	MEL1.5 (Ohm-m)	40
6	CALIPER (in)	16	10 (ft3)	0 0	MEL2.0 (Ohm-m)	40
			TBHV			
			0 (ft3)	10		





0	GAMMA RAY (GAPI)	150	ABHV	0	MEL1.5 (Ohm-m)	40
6	CALIPER (in)	16	10 (ft3)	0	MEL2.0 (Ohm-m)	40
			TBHV			
			0 (ft3)	10		

Calibration Report

Database File: 009741ddn.db
 Dataset Pathname: pass6.1
 Dataset Creation: Mon Oct 01 09:35:34 2012 by Calc Open-Cased 090629

MICRO Calibration Report

Serial Number: MICRO3
 Tool Model: PROBE
 Performed: Thu Nov 17 03:06:31 2011

Caliper Calibration:	Gain=3.916	Offset=-9.271
	Low Cal	High Cal
References	8.000	14.000
Readings	4.257	5.789

1.5" Calibration:	Gain=200.000	Offset=-2.400
	Low Cal	High Cal
References	0.000	20.000
Readings	0.004	0.228

2" Calibration:	Gain=130.553	Offset=-1.220
	Low Cal	High Cal
References	0.000	20.000
Readings	0.005	0.175

Gamma Ray Calibration Report

Serial Number: #8
 Tool Model: OPEN
 Performed: Mon Jun 13 16:56:43 2011

Calibrator Value:	150.0	GAPI
Background Reading:	0.0	cps
Calibrator Reading:	175.0	cps
Sensitivity:	0.8371	GAPI/cps