



SUPERIOR
Hays,
Kansas

SONIC
LOG

Company	PELICAN HILL OIL & GAS, INC.	Company	PELICAN HILL OIL & GAS, INC.
Well	NELSON #4-7	Well	NELSON #4-7
Field	WILDCAT	Field	WILDCAT
County	TREGO	County	TREGO
State	KANSAS	State	KANSAS
Location:	API # : 15-195-22805-0000 335' FSL & 335' FWL NE-SW-SW-SW	Other Services CDL/CNL DIL/MEL/FF	
Permanent Datum	GROUND LEVEL	Elevation	2165
Log Measured From	KELLY BUSHING 9' A.G.L.	K.B.	2174
Drilling Measured From	KELLY BUSHING	D.F.	2172
		G.L.	2165
	SEC 7 TWP 11S RGE 21W		

Date	10/1/12
Run Number	TWO
Depth Driller	3824
Depth Logger	3825
Bottom Logged Interval	3815
Top Log Interval	250
Casing Driller	8 5/8" @ 267
Casing Logger	272
Bit Size	7 7/8
Type Fluid in Hole	CHEMICAL MUD
Density / Viscosity	9.0/43
pH / Fluid Loss	11.5/6.8
Source of Sample	FLOWLINE
Rin @ Meas. Temp	1.00 @ 75F
Rmf @ Meas. Temp	0.75 @ 75F
Rmc @ Meas. Temp	0.90 @ 75F
Source of Rmf / Rmc	MEASURED
Rin @ BHT	.65 @ 114F
Time Circulation Stopped	2 HOURS
Time Logger on Bottom	
Maximum Recorded Temperature	114F
Equipment Number	680
Location	HAYS, KS.
Recorded By	JASON CAPPELLUCCI
Witnessed By	MARC DOWNING
	IAN MABB

<<< Fold Here >>>

All interpretations are opinions based on inferences from electrical or other measurements and we cannot and do not guarantee the accuracy or correctness of any interpretation, and we shall not, except in the case of gross or willful negligence on our part, be liable or responsible for any loss, costs, damages, or expenses incurred or sustained by anyone resulting from any interpretation made by any of our officers, agents or employees. These interpretations are also subject to our general terms and conditions set out in our current Price Schedule.

Comments

THANK YOU FOR USING SUPERIOR WELL SERVICE (785) 628-6395
 DIRECTIONS
 I 70 & RIGA EXIT - N. TO RD. A - 1 1/2 W. - 1 S. TO CURVE - 1 W. TO CURVE
 1 S. - E. INTO

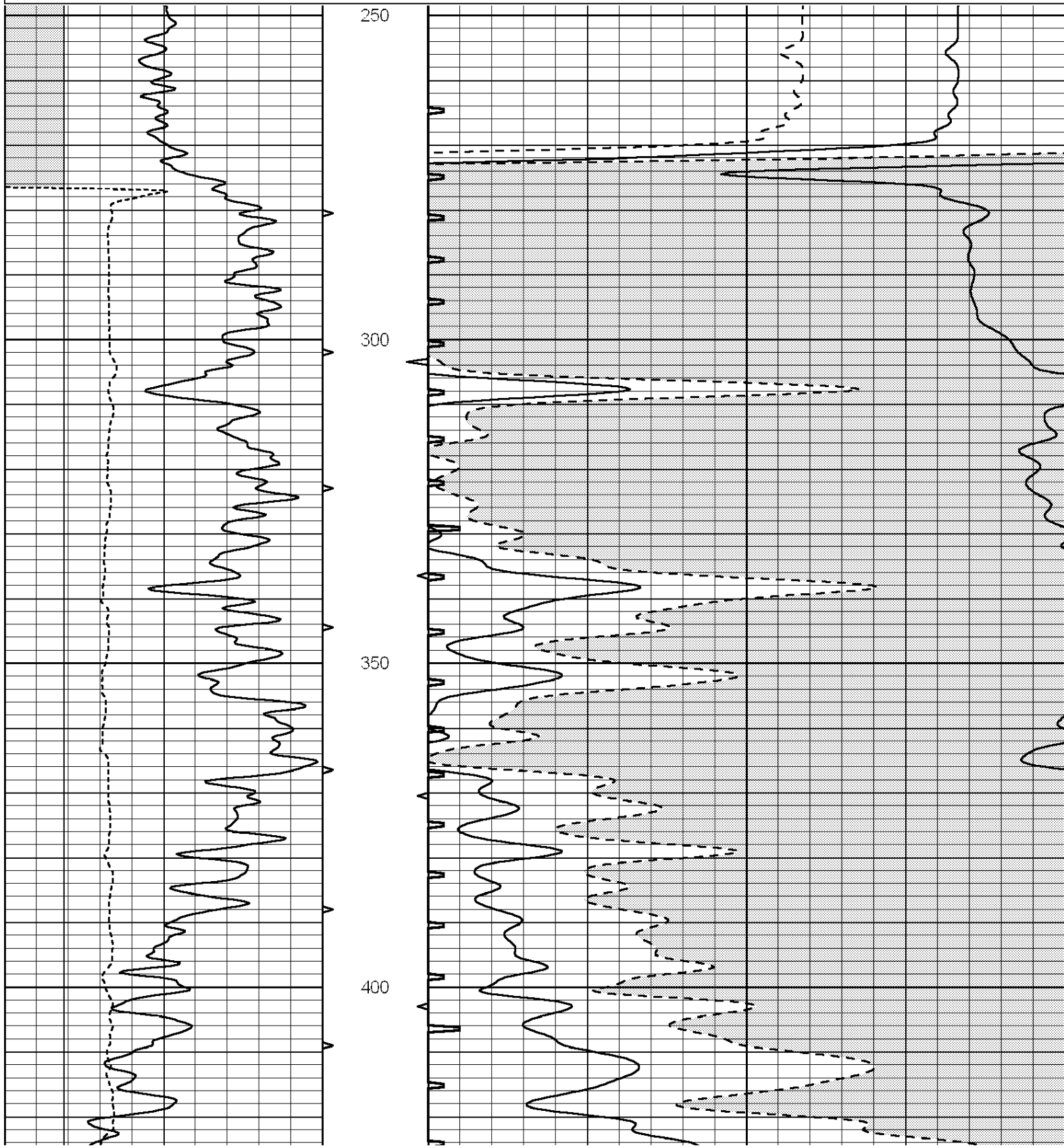


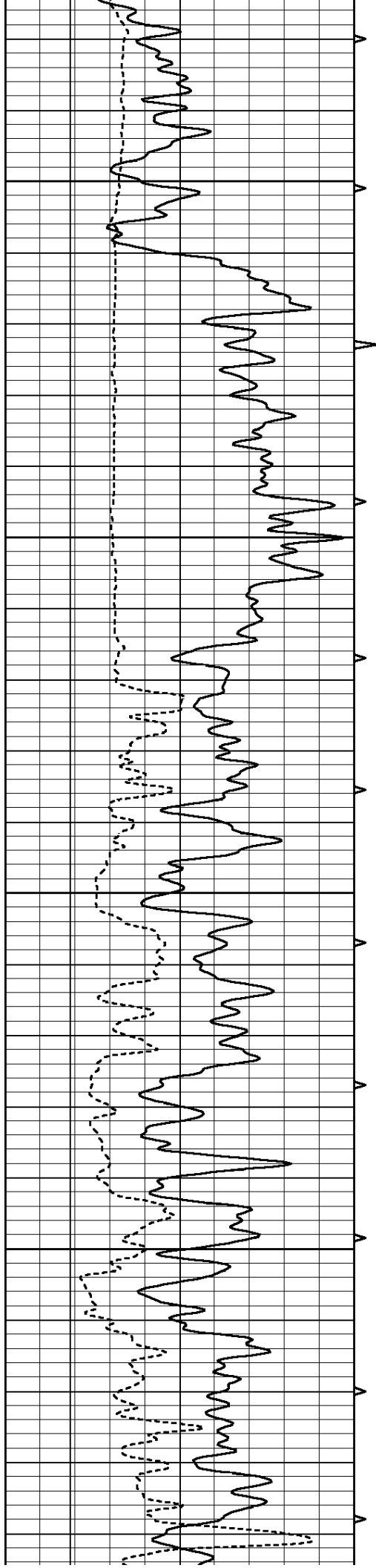
SUPERIOR
Hays,
Kansas

MAIN SECTION

Database File: 009741ddn.db
 Dataset Pathname: pass6.2
 Presentation Format: _slt
 Dataset Creation: Mon Oct 01 10:12:49 2012 by Calc Open-Cased 090629
 Charted by: Depth in Feet scaled 1:240

0	GAMMA RAY (GAPI)	150	ABHV	140	DELTA TIME (usec/ft)	40
6	CALIPER (in)	16	10 (ft3)	0	30	SONIC POROSITY (pu)
-----			TBHV	0	ITT (msec)	20
-----			0 (ft3)	10	-----	



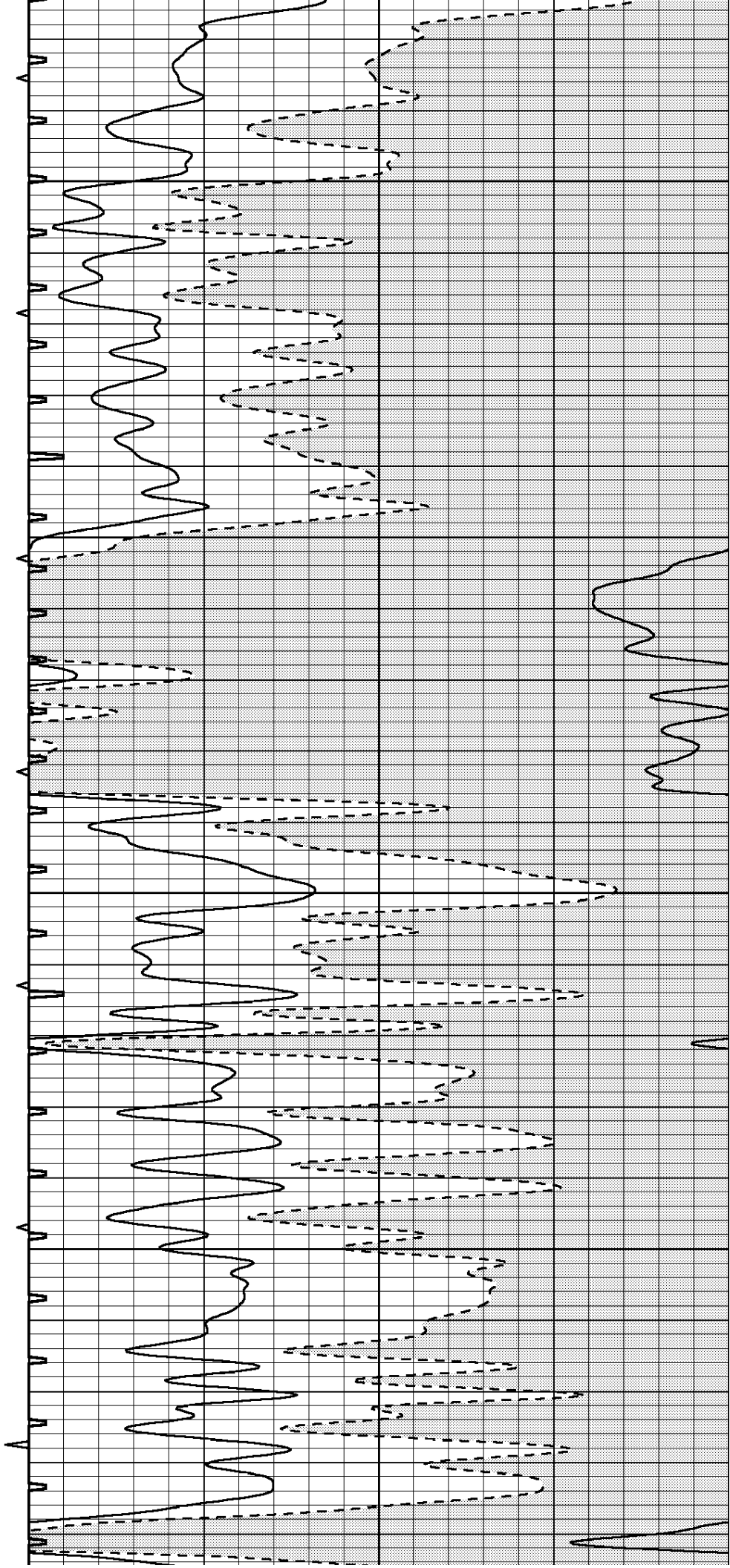


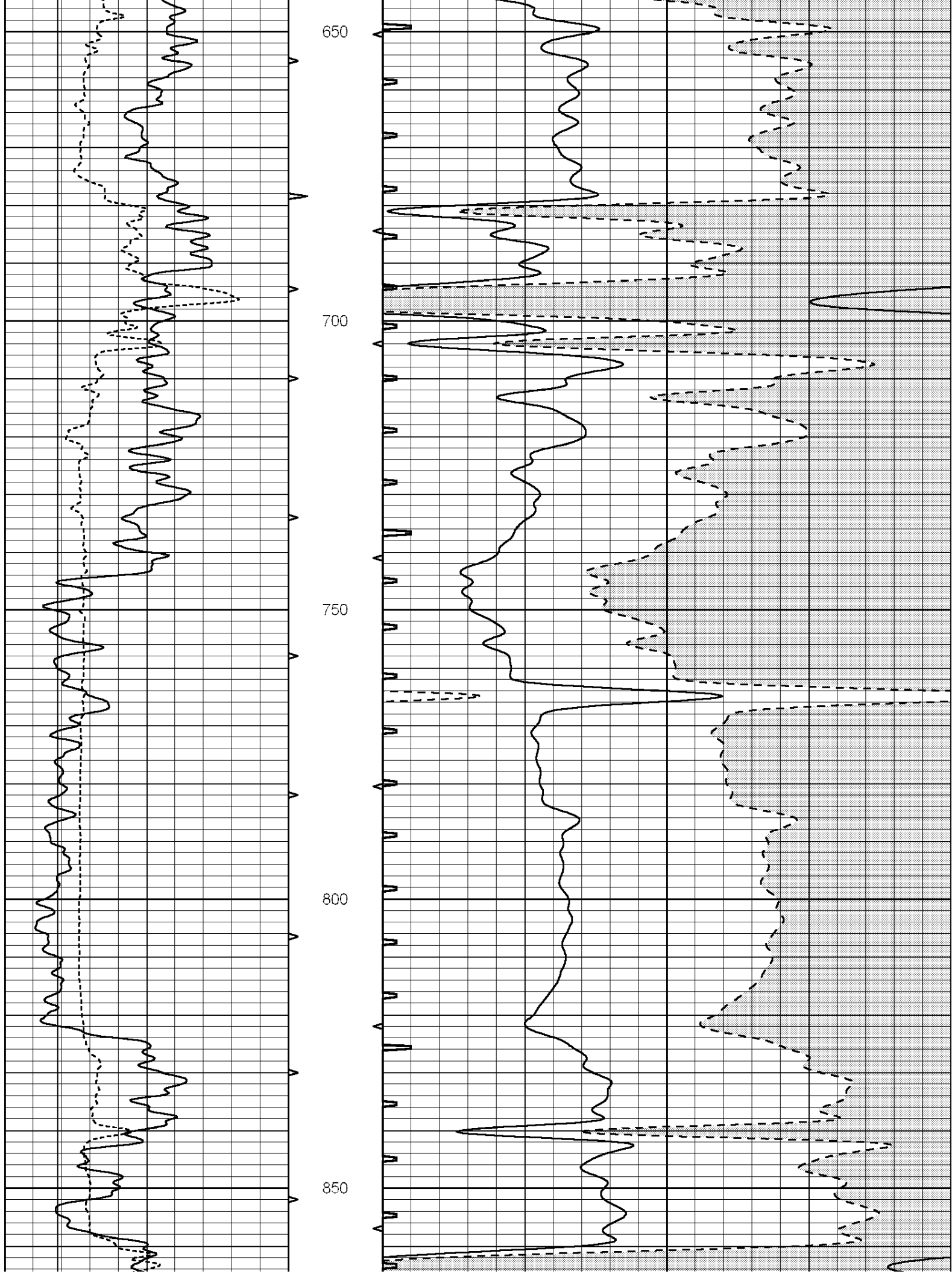
450

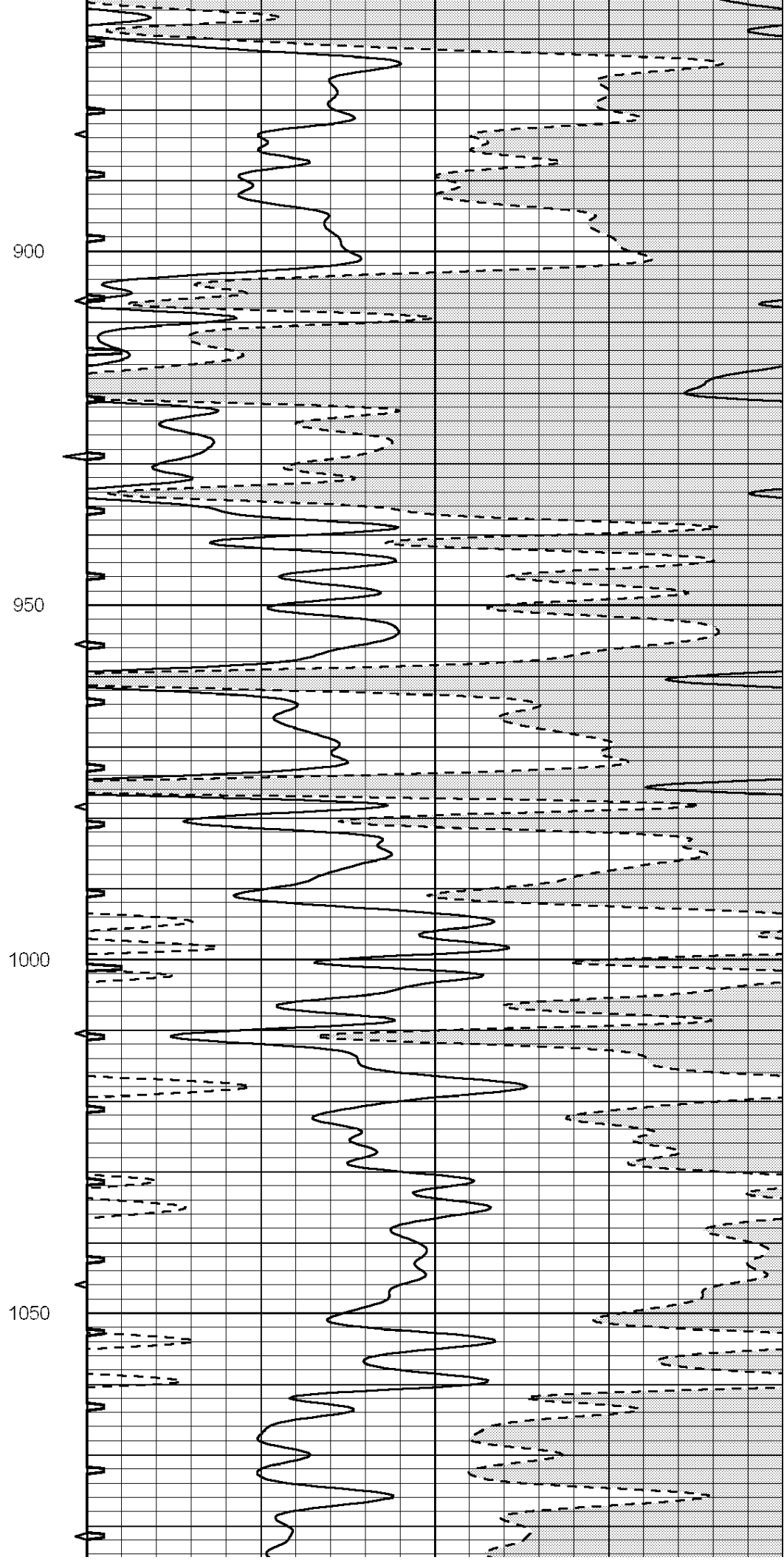
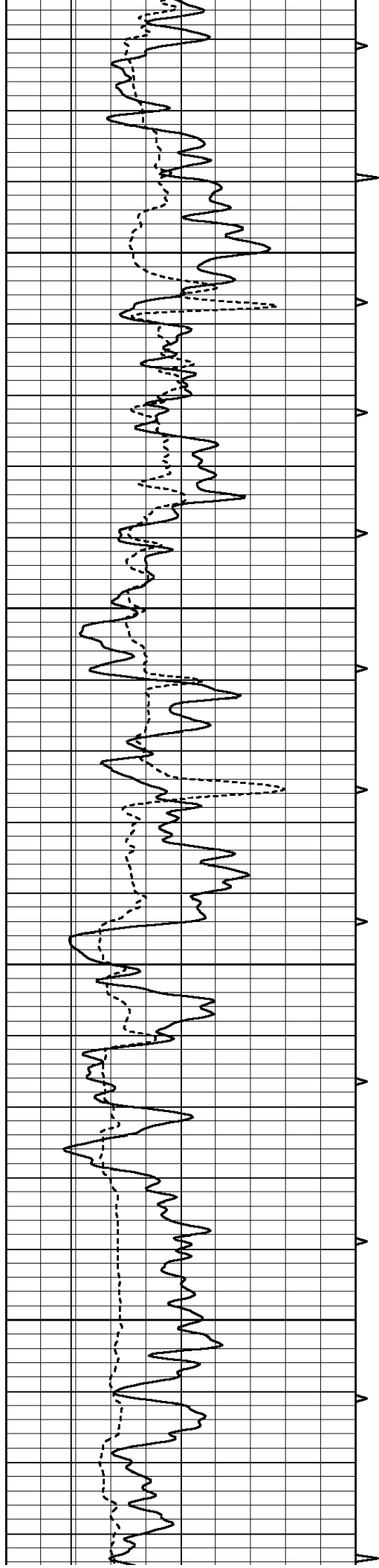
500

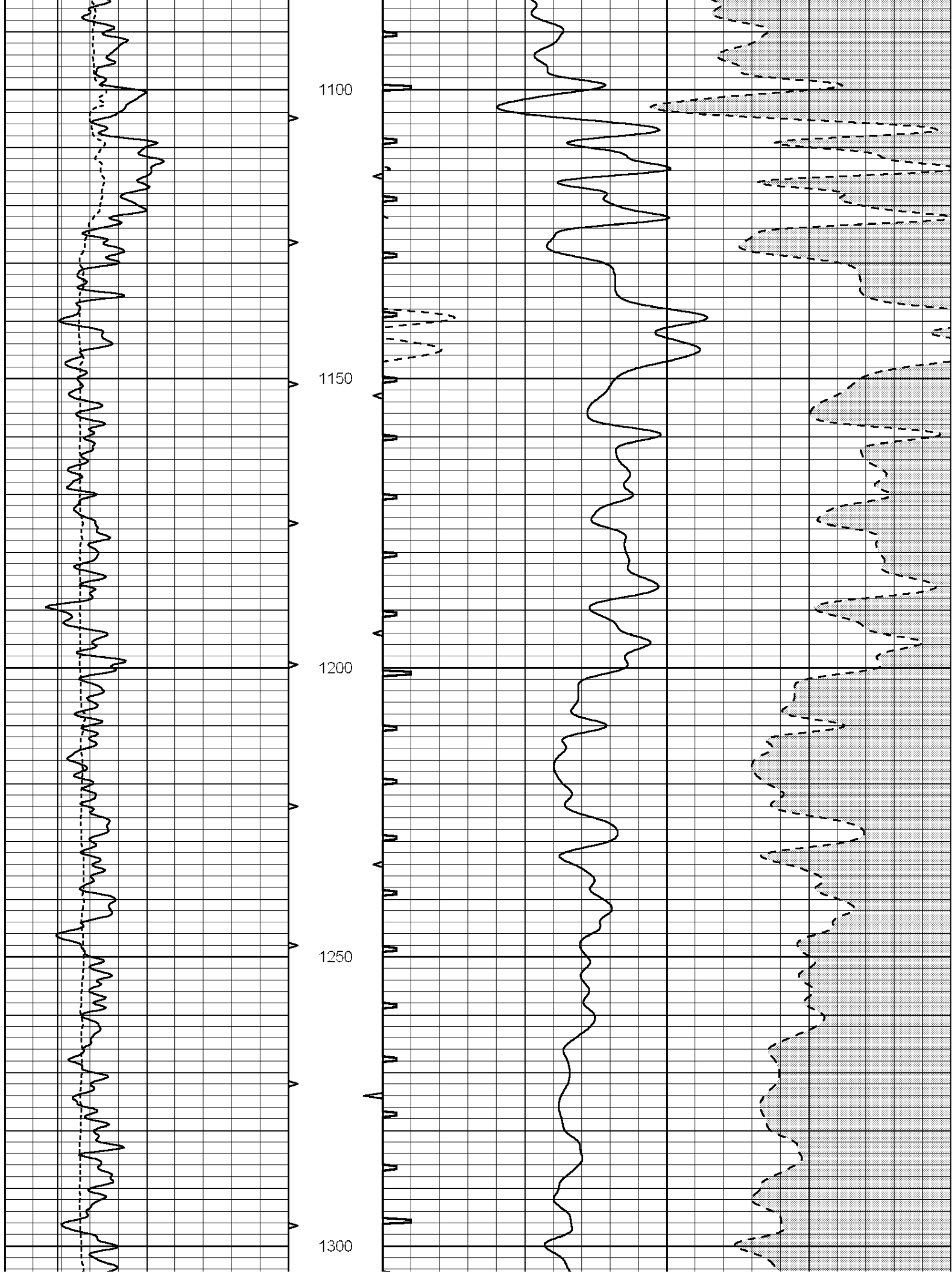
550

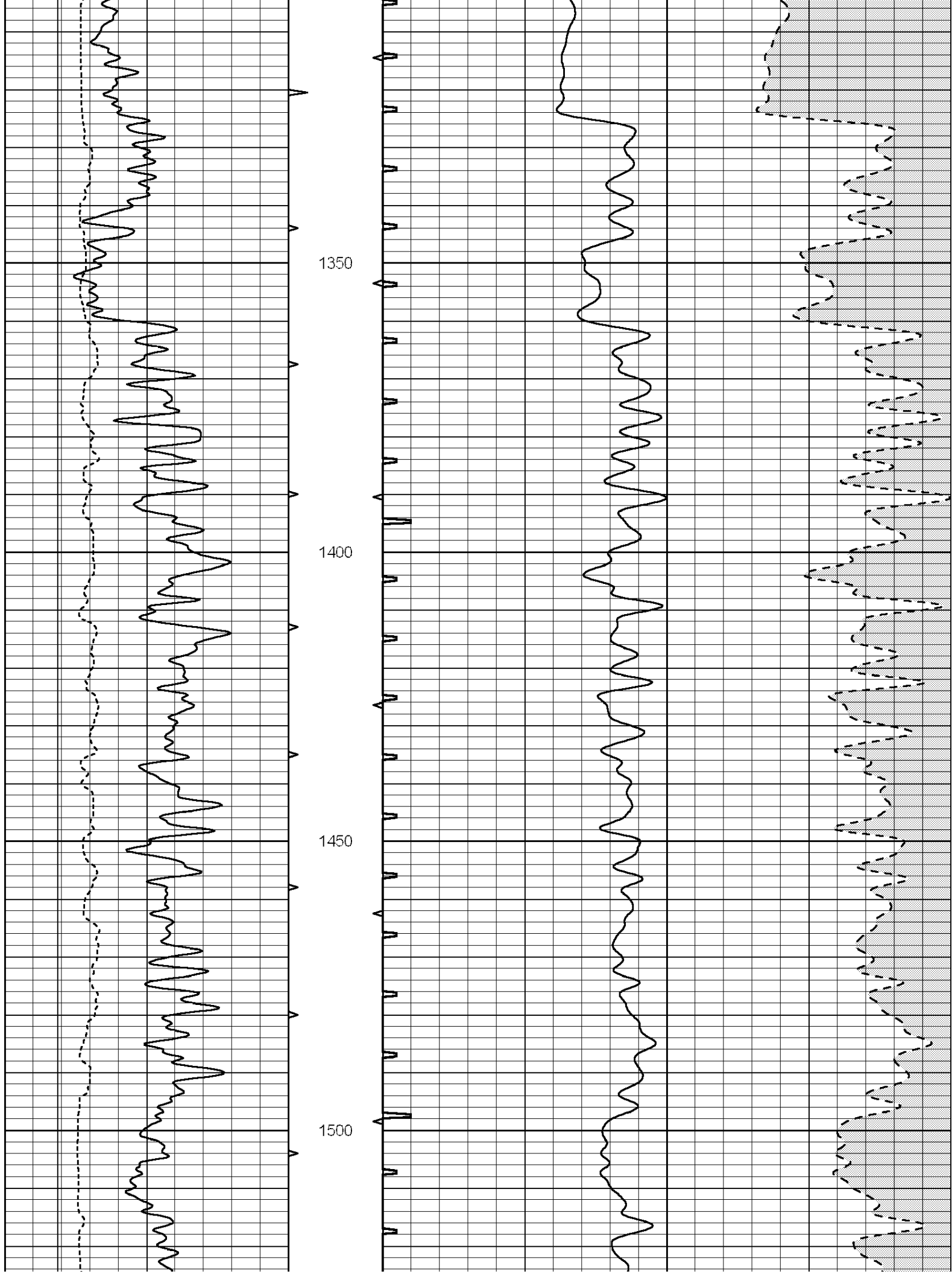
600

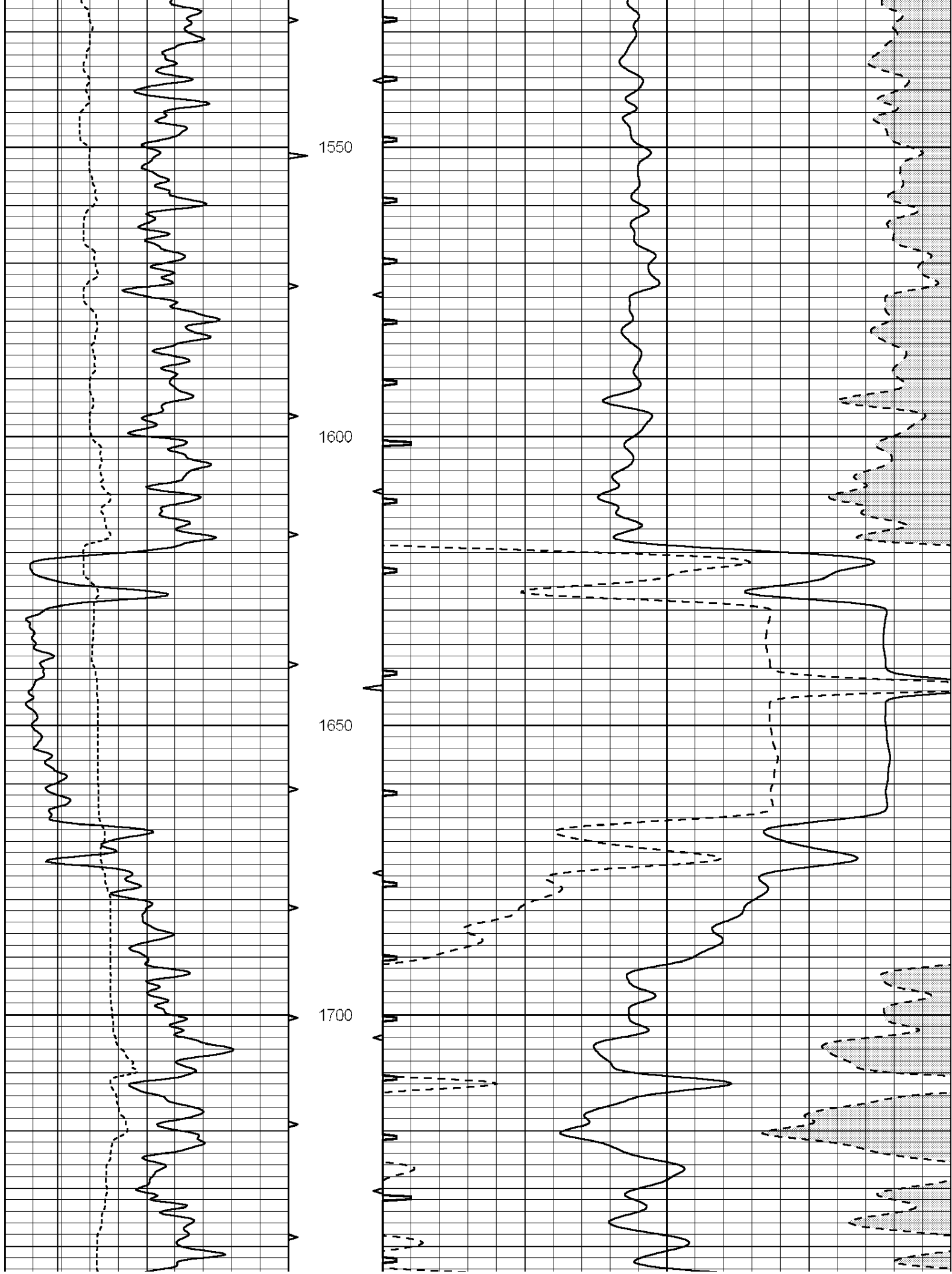


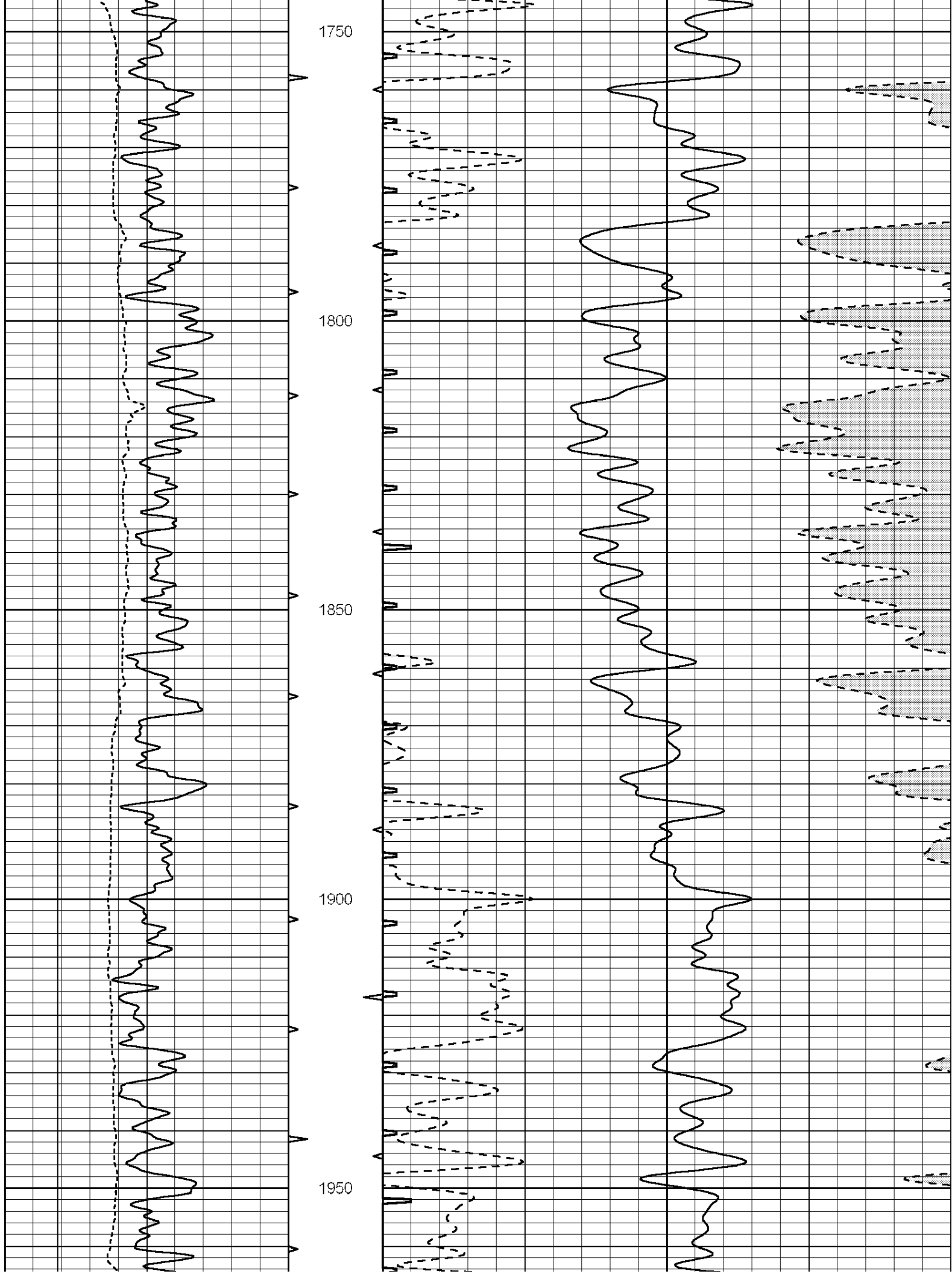


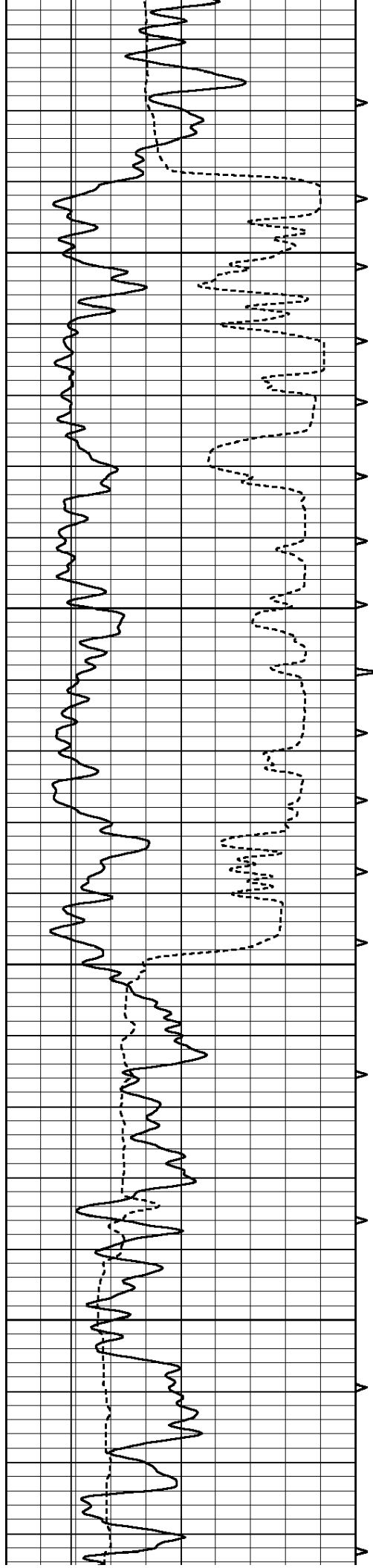










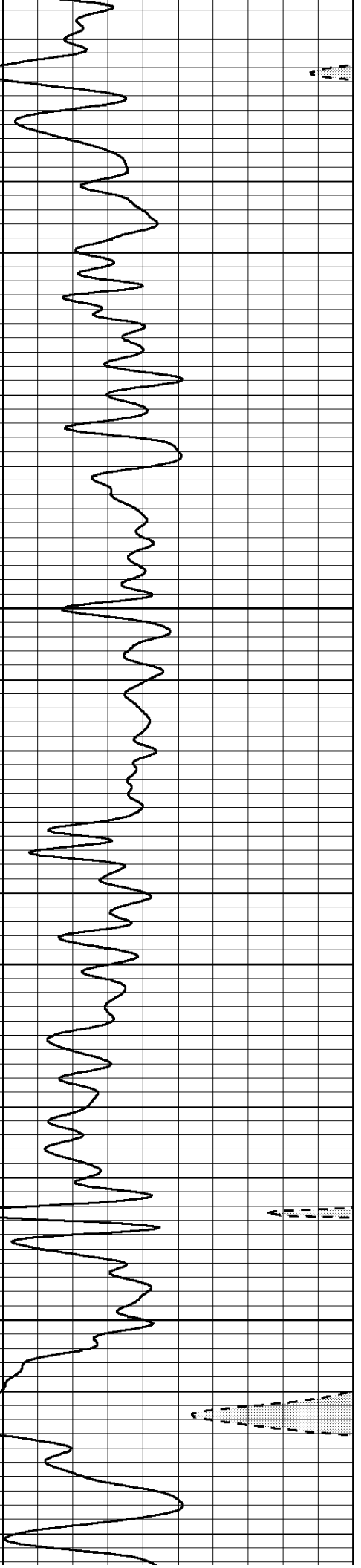
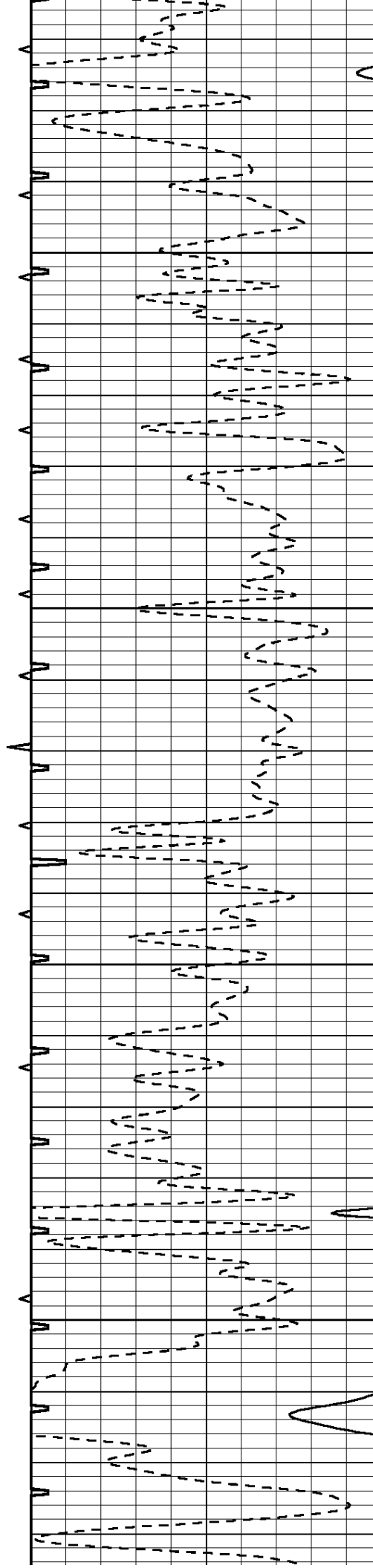


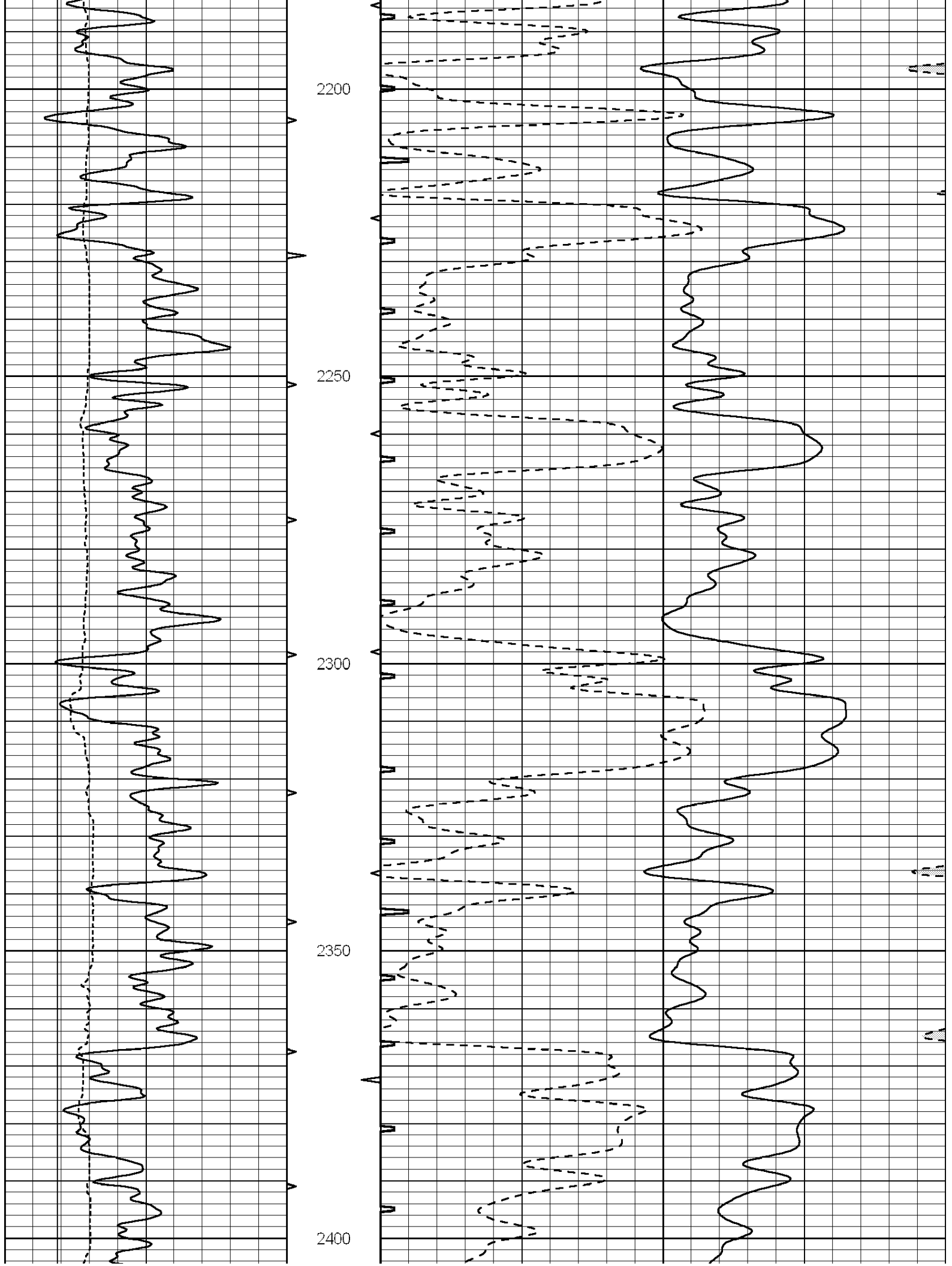
2000

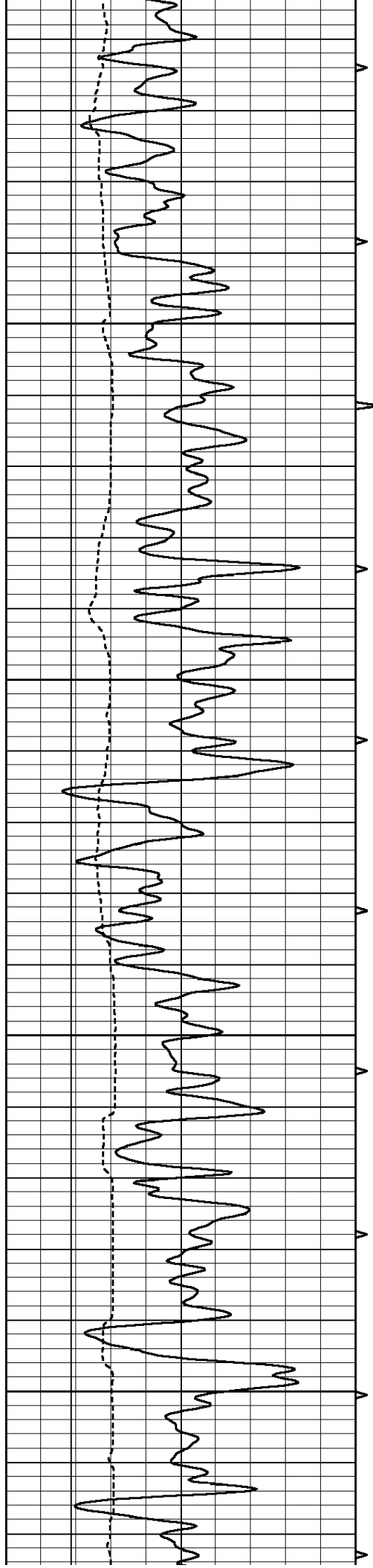
2050

2100

2150





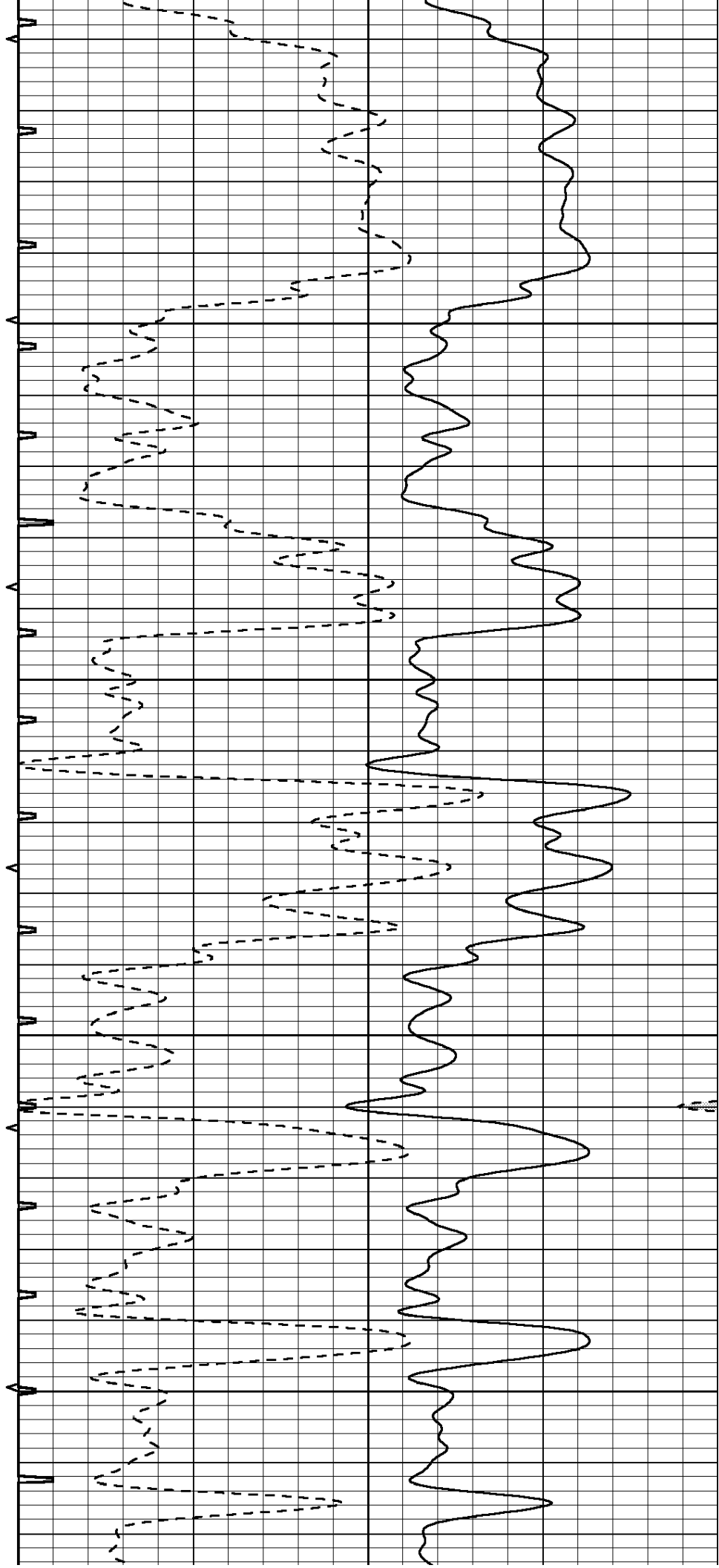


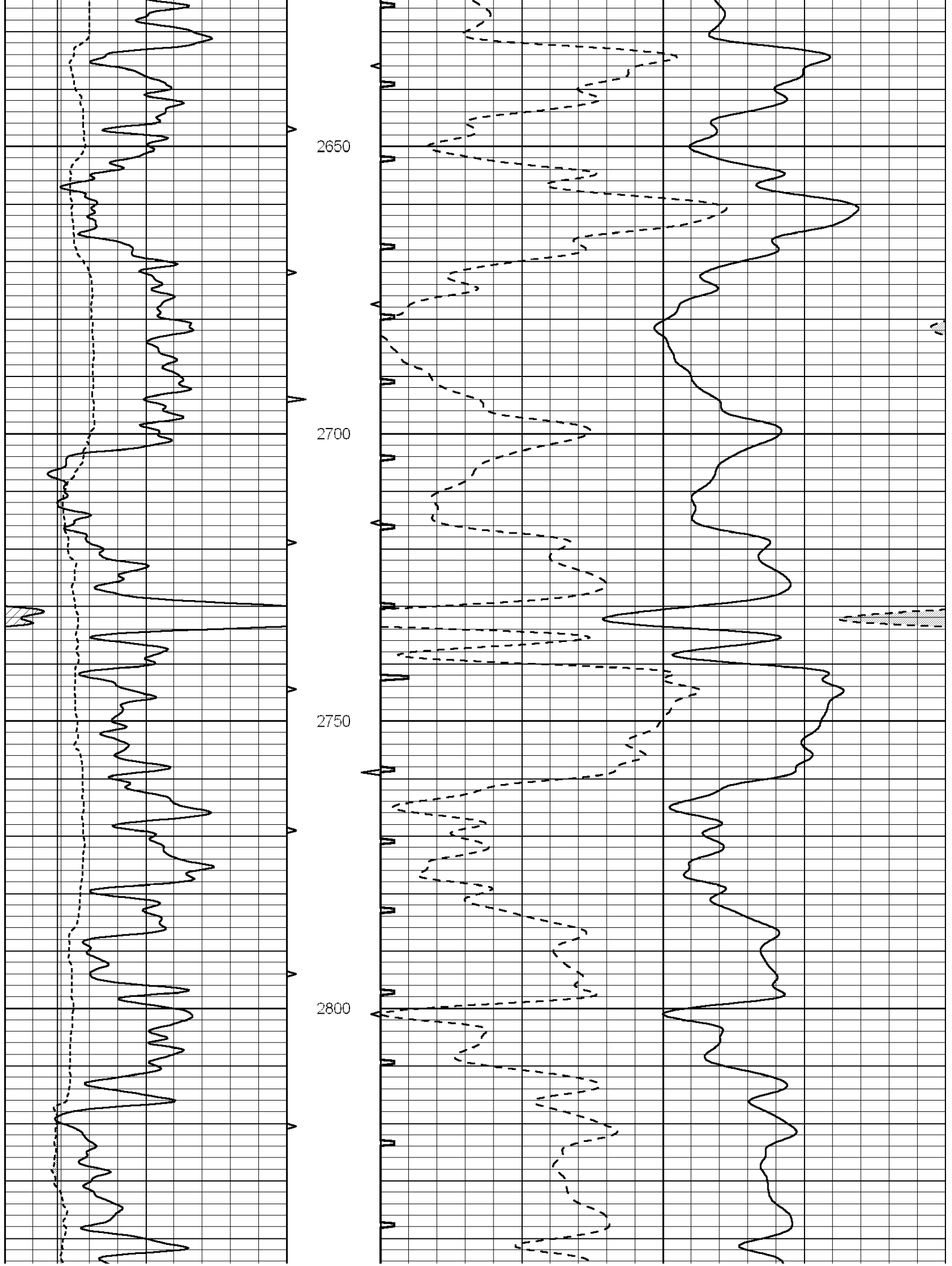
2450

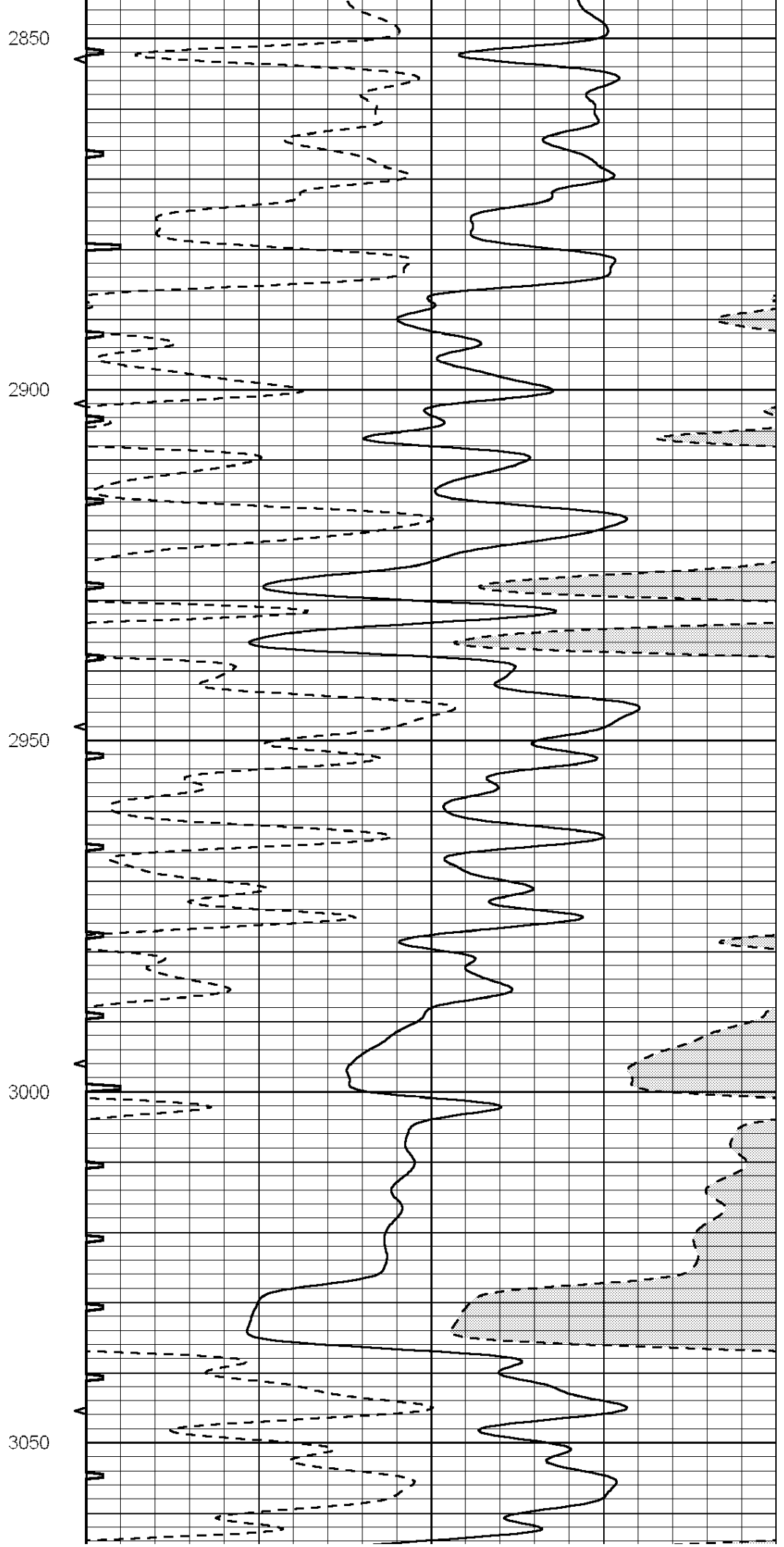
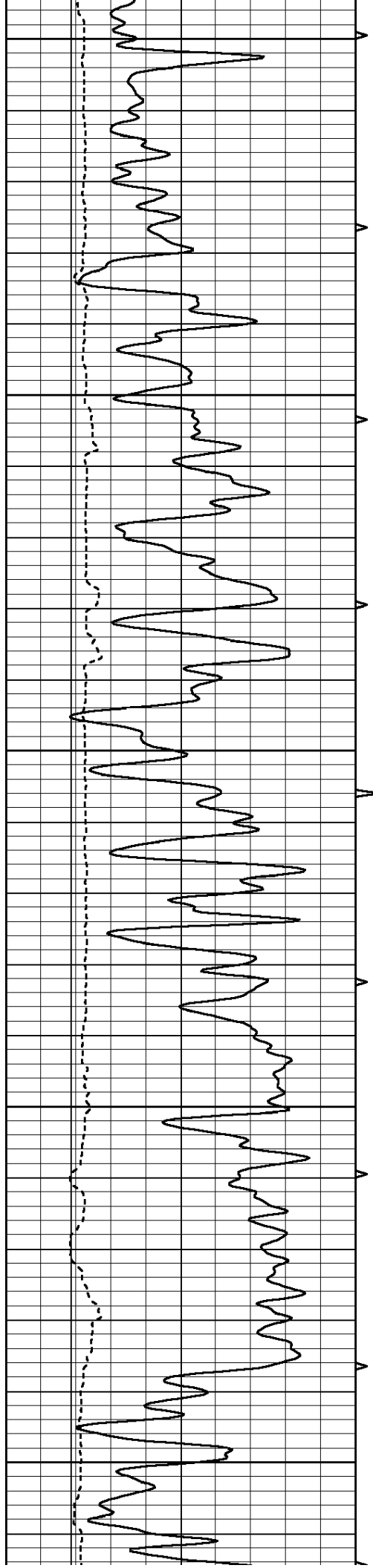
2500

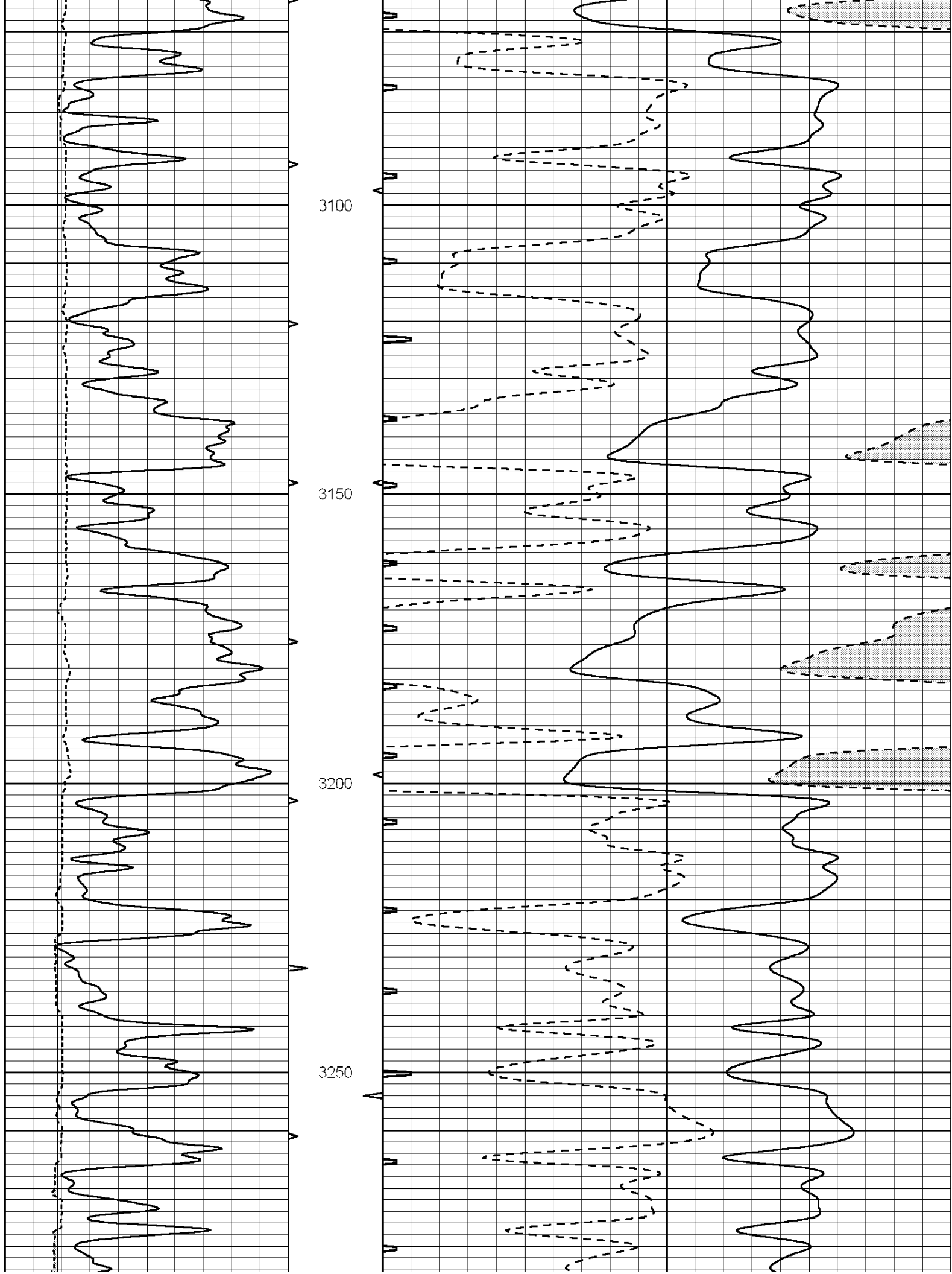
2550

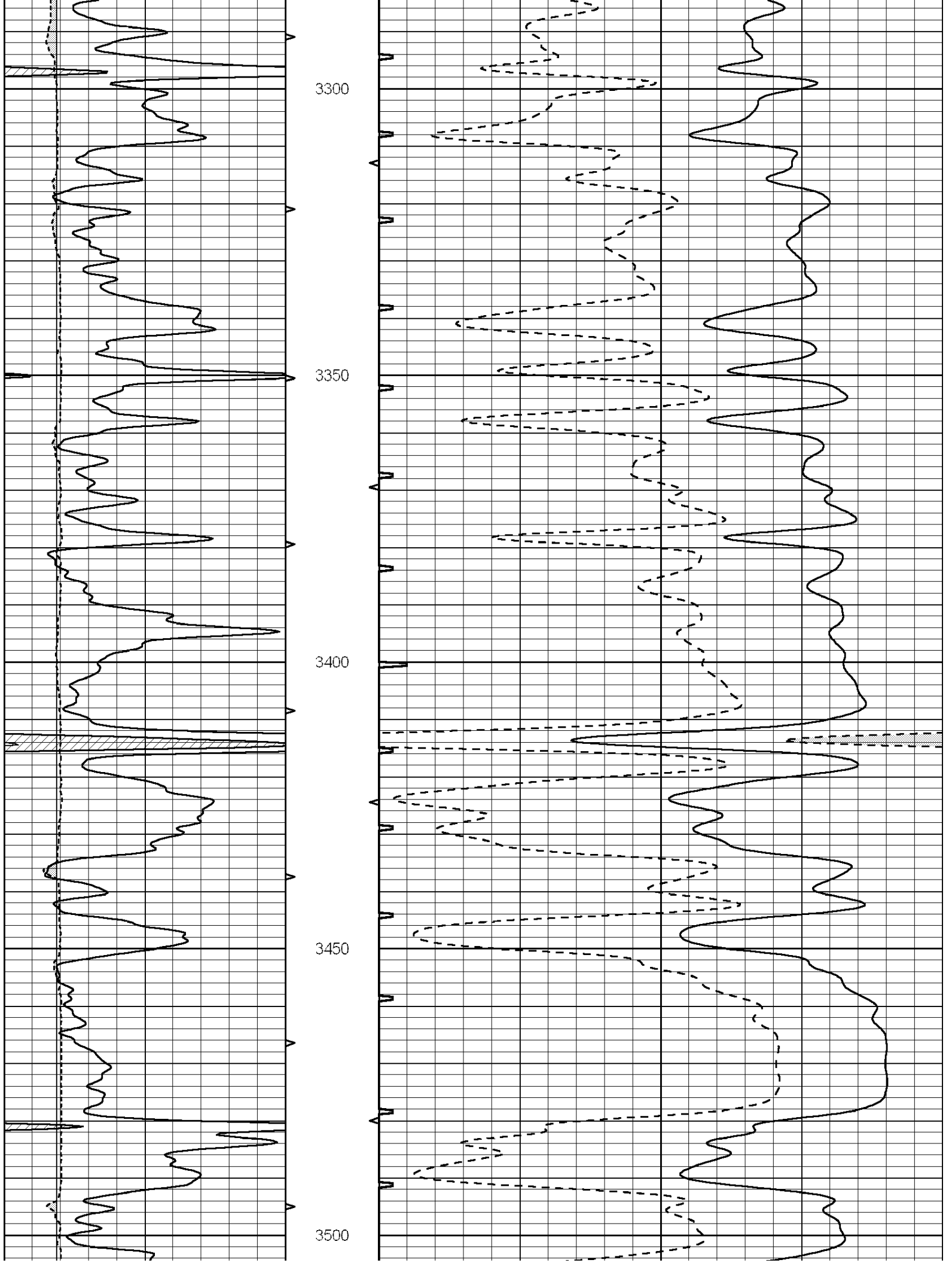
2600

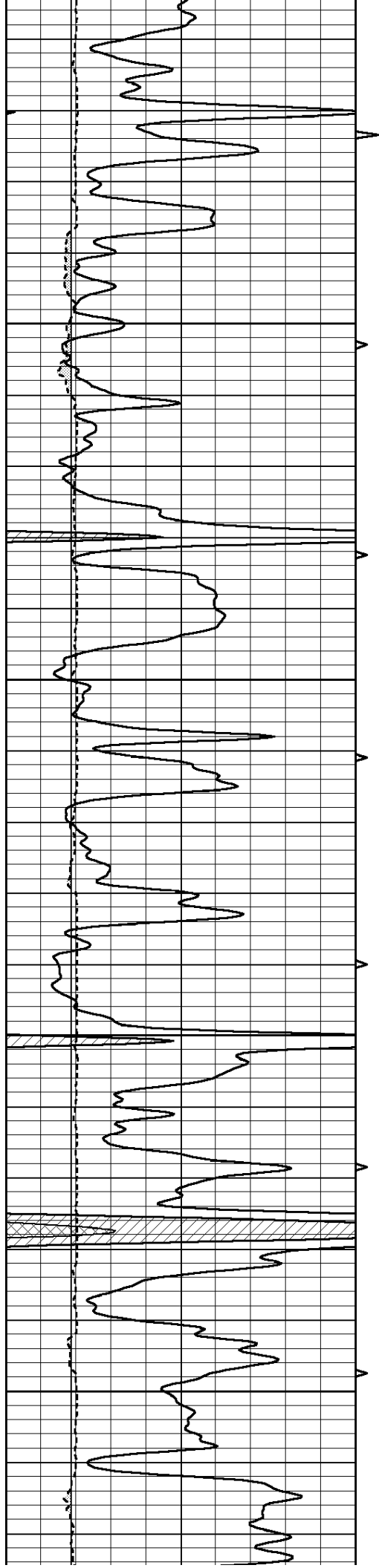










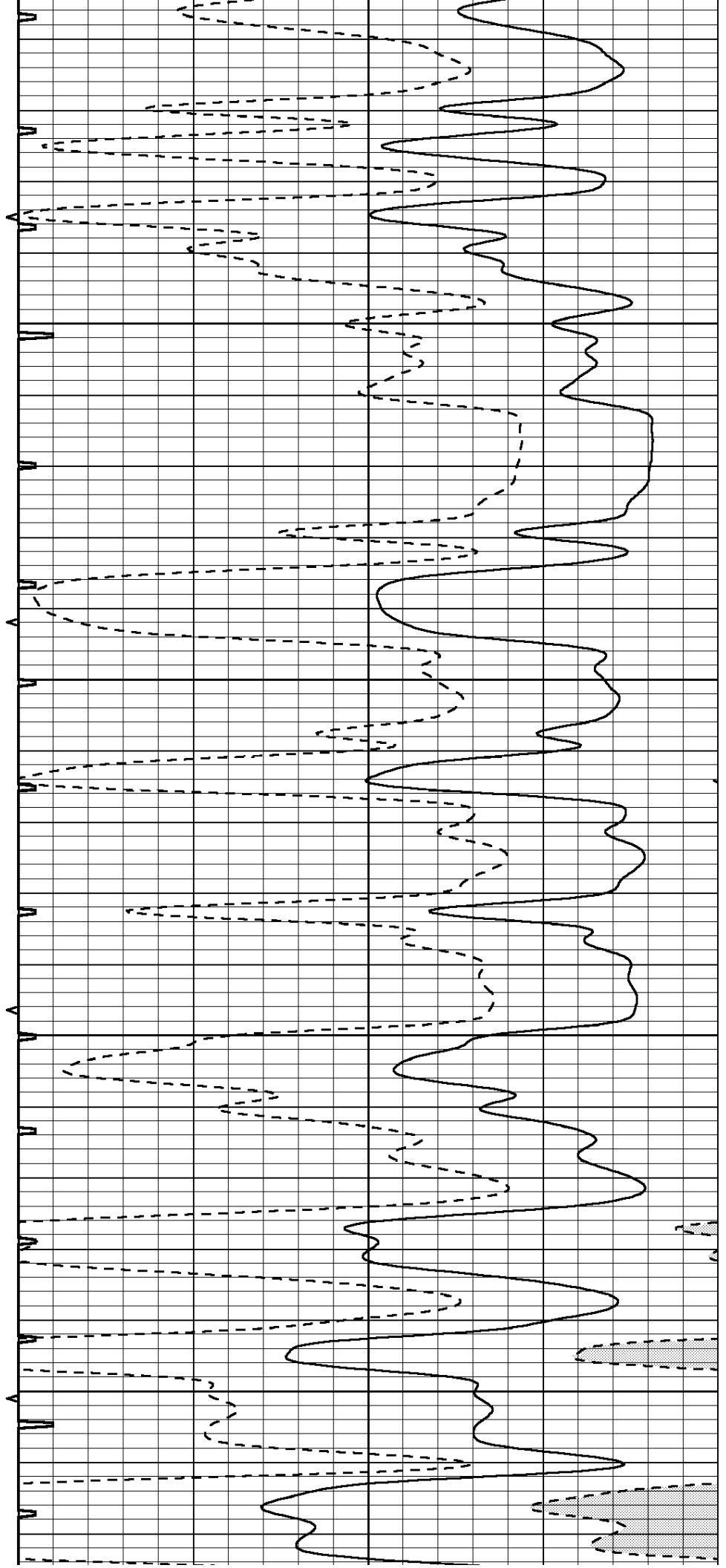


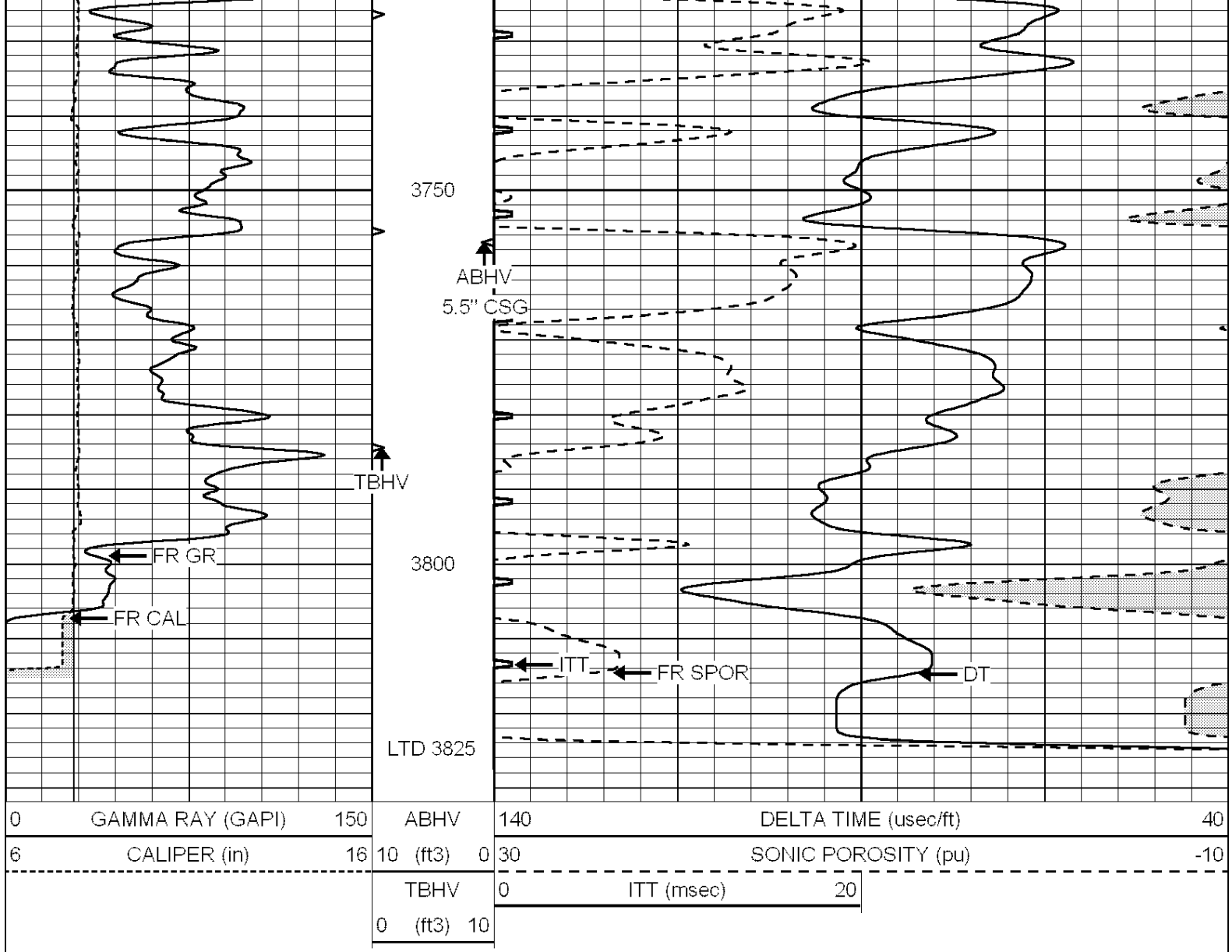
3550

3600

3650

3700

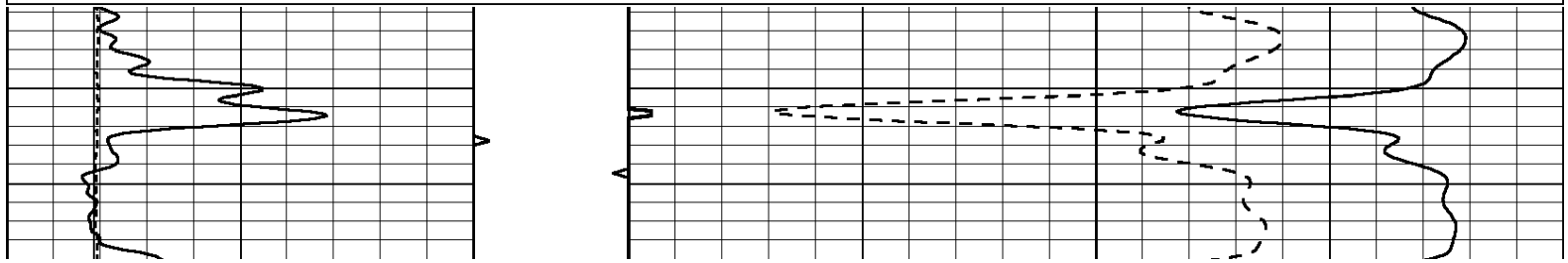
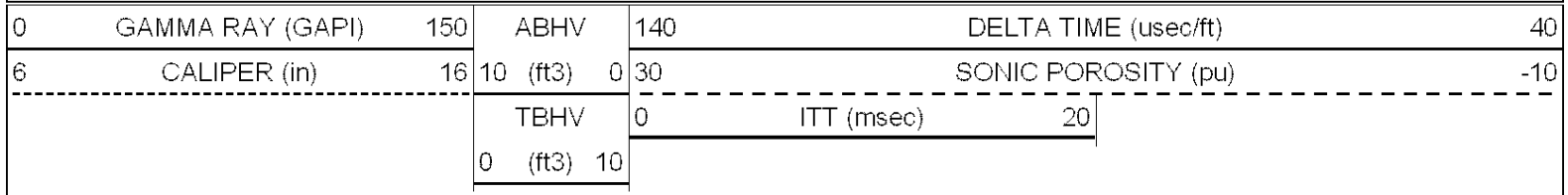


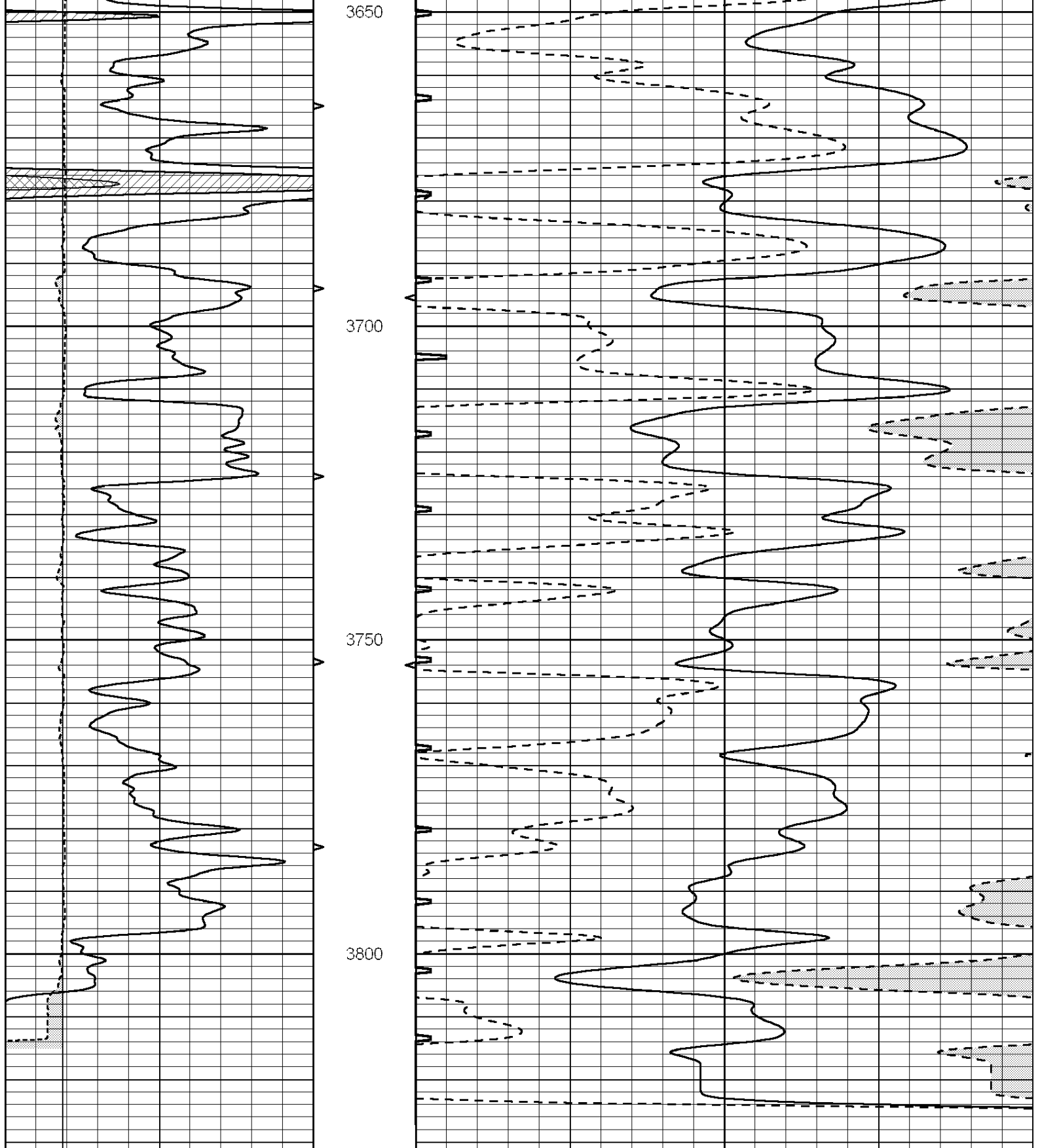


SUPERIOR
Hays,
Kansas

REPEAT SECTION

Database File: 009741ddn.db
 Dataset Pathname: pass5.1
 Presentation Format: _slt
 Dataset Creation: Mon Oct 01 09:34:13 2012 by Calc Open-Cased 090629
 Charted by: Depth in Feet scaled 1:240





0	GAMMA RAY (GAPI)	150	ABHV	140	DELTA TIME (usec/ft)	40
6	CALIPER (in)	16	10 (ft3)	0 30	SONIC POROSITY (pu)	-10
			TBHV	0	ITT (msec)	20
			0 (ft3)	10		