



**SUPERIOR**  
Hays,  
Kansas

**SONIC**  
LOG

Company WOOLSEY OPERATING COMPANY, LLC.  
Well DIEL F #2  
Field MAYBERRY NORTH POOL  
County BARBER  
State KANSAS

Company WOOLSEY OPERATING COMPANY, LLC.  
Well DIEL F #2  
Field MAYBERRY NORTH POOL  
County BARBER State KANSAS

Location: API # : 15-007-23885-0000  
495' FSL & 660' FWL  
N/2 - S/2 - SW - SW  
SEC 23 TWP 34S RGE 11W  
Permanent Datum GROUND LEVEL Elevation 1327  
Log Measured From KELLY BUSHING 13' A.G.L.  
Drilling Measured From KELLY BUSHING  
Other Services  
CDL/CNL  
PE/DIL  
Elevation  
K.B. 1340  
D.F. 1338  
G.L. 1327

Date	6/4/12
Run Number	TWO
Depth Driller	5173
Depth Logger	5174
Bottom Logged Interval	5164
Top Log Interval	200
Casing Driller	10 3/4" @ 219'
Casing Logger	215'
Bit Size	7 7/8
Type Fluid in Hole	CHEMICAL MUD
Density / Viscosity	8.9/50
pH / Fluid Loss	10.5/9.6
Source of Sample	FLOWLINE
Rim @ Meas. Temp	0.65 @ 91F
Rmf @ Meas. Temp	0.49 @ 91F
Rmc @ Meas. Temp	0.78 @ 91F
Source of Rmf / Rmc	MEASURED
Rim @ BHT	0.47 @ 127F
Time Circulation Stopped	2 HOURS
Time Logger on Bottom	
Maximum Recorded Temperature	127F
Equipment Number	680
Location	HAYS, KS.
Recorded By	JEFF GRONEMEG
Witnessed By	SCOTT ALBERG

<<< Fold Here >>>

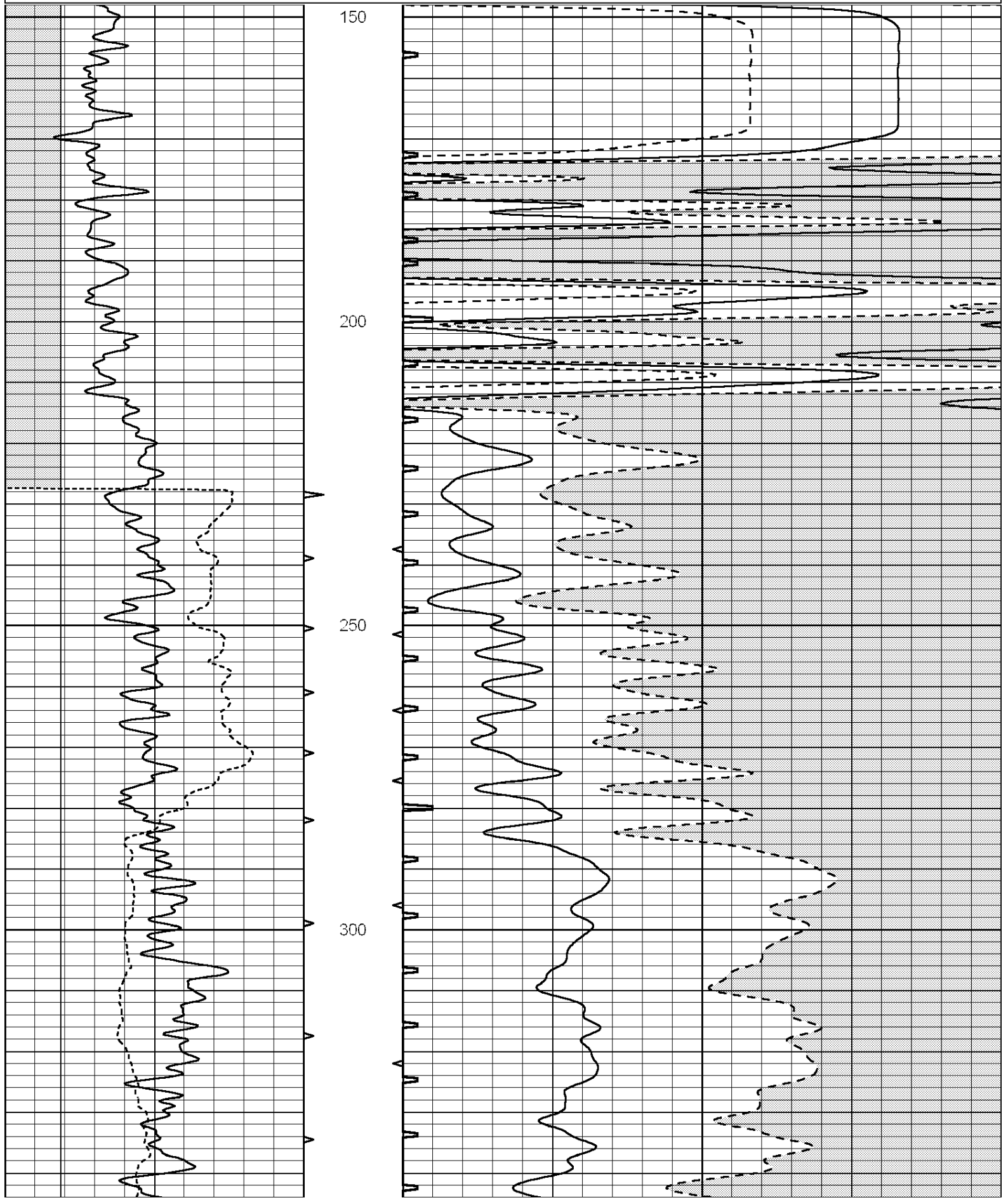
All interpretations are opinions based on inferences from electrical or other measurements and we cannot and do not guarantee the accuracy or correctness of any interpretation, and we shall not, except in the case of gross or willful negligence on our part, be liable or responsible for any loss, costs, damages, or expenses incurred or sustained by anyone resulting from any interpretation made by any of our officers, agents or employees. These interpretations are also subject to our general terms and conditions set out in our current Price Schedule.

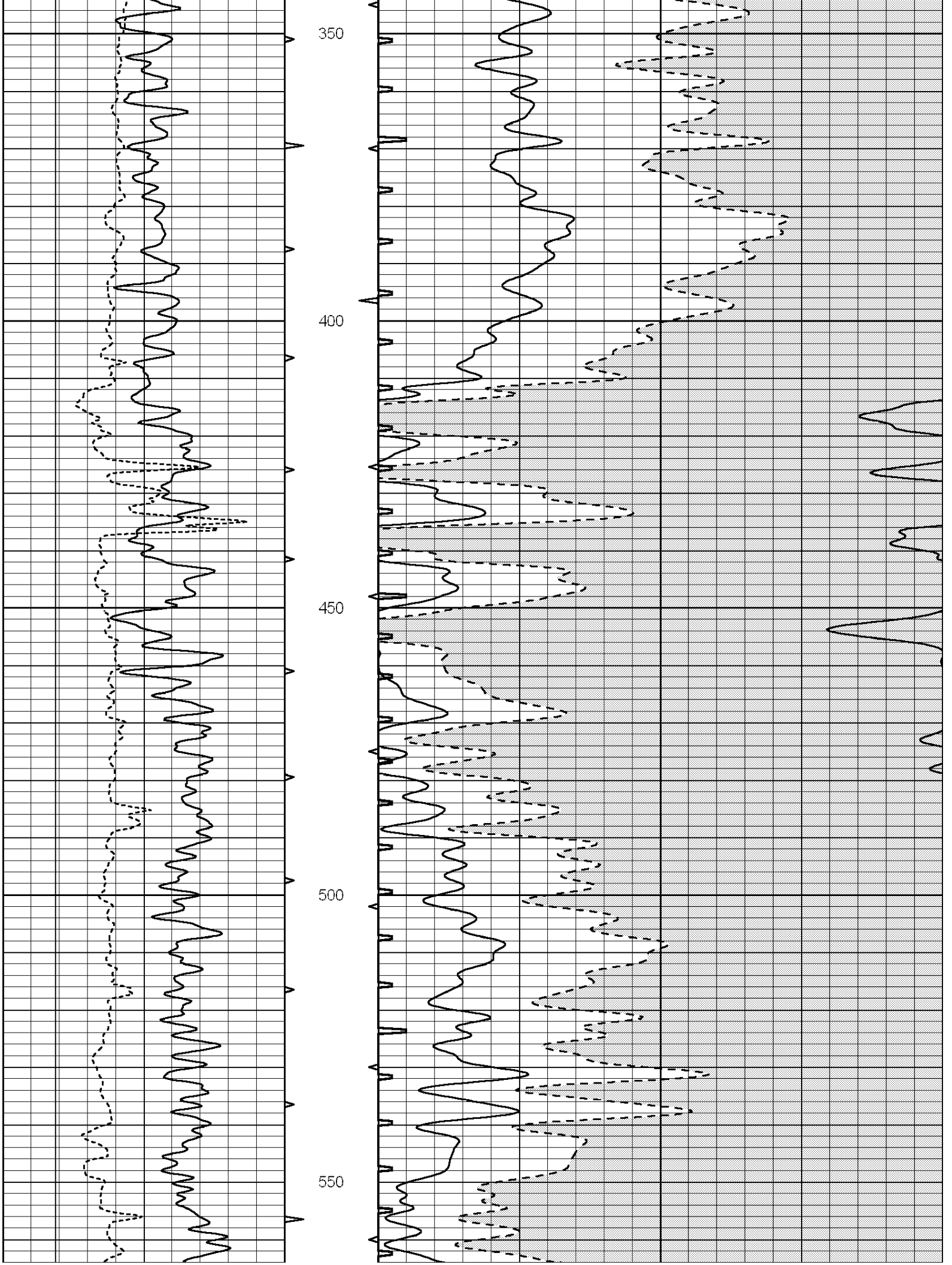
**Comments**

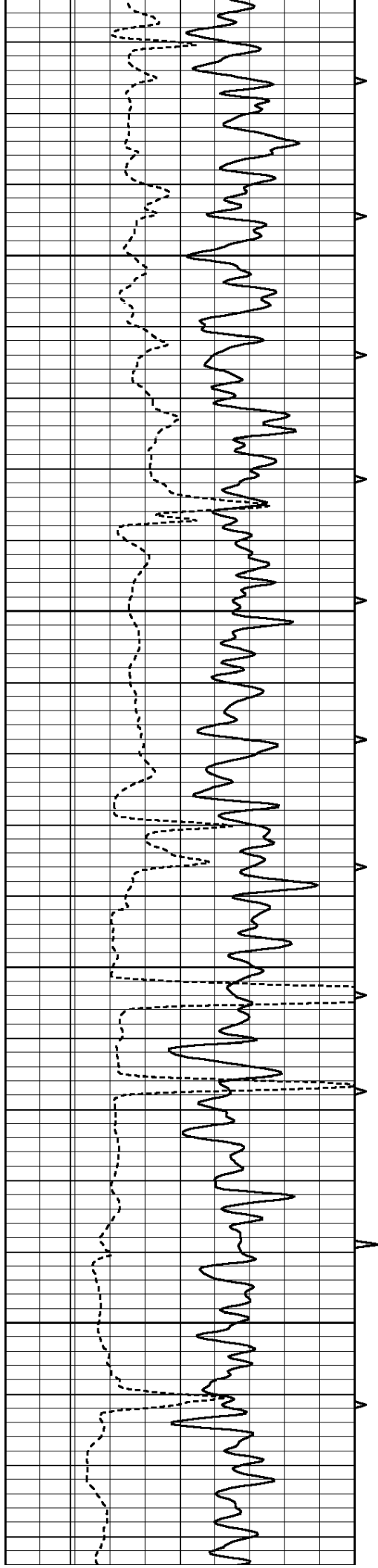
THANK YOU FOR USING SUPERIOR WELL SERVICE (785) 628-6395  
DIRECTIONS  
MEDICINE LODGE, KS. - 9 S. TO GERLANE RD. - 7 1/2 MILES EAST TO BETHEL RD  
3 1/2 MILES SOUTH TO ANGUS RD - 1 MILE WEST - 1/2 MILE SOUTH  
WEST & SOUTH INTO

Database File: 009222pe.db  
Dataset Pathname: pass6.1  
Presentation Format: \_slt  
Dataset Creation: Thu Jun 14 19:53:22 2012  
Charted by: Depth in Feet scaled 1:240

0	GAMMA RAY (GAPI)	150	ABHV	140	DELTA TIME (usec/ft)	40
6	CALIPER (in)	16	10 (ft3) 0	30	SONIC POROSITY (pu)	-10
			TBHV	0	ITT (msec)	20
			0 (ft3) 10			





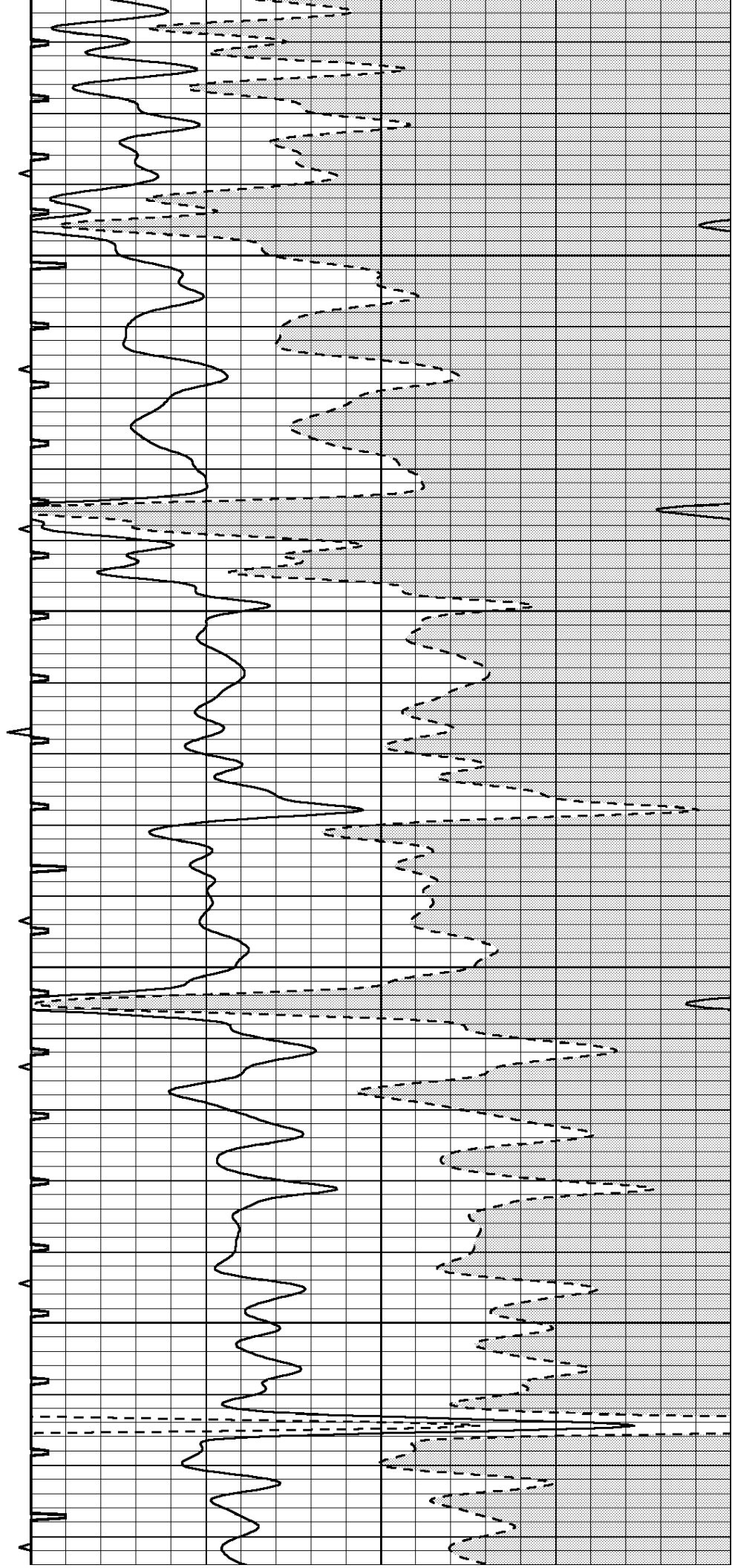


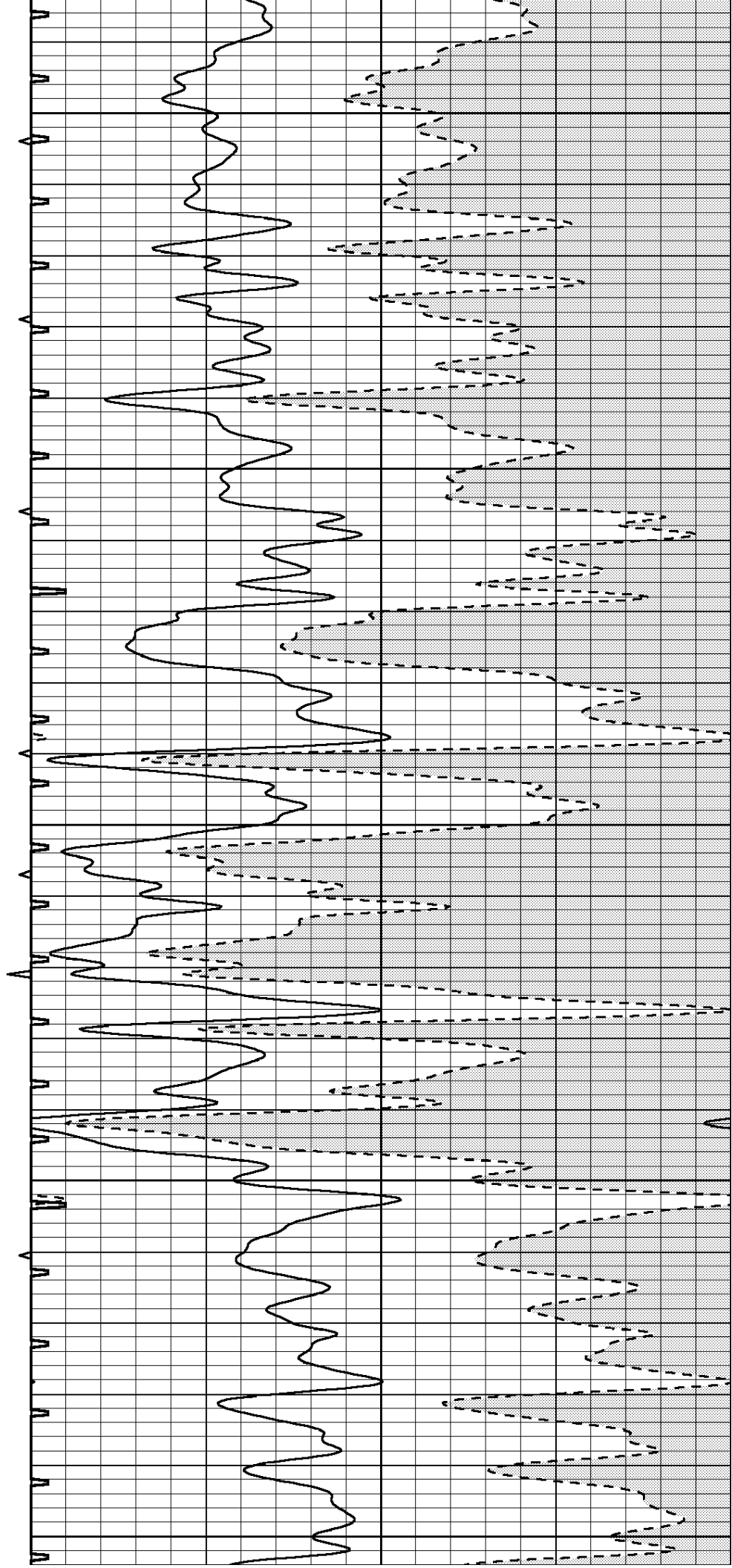
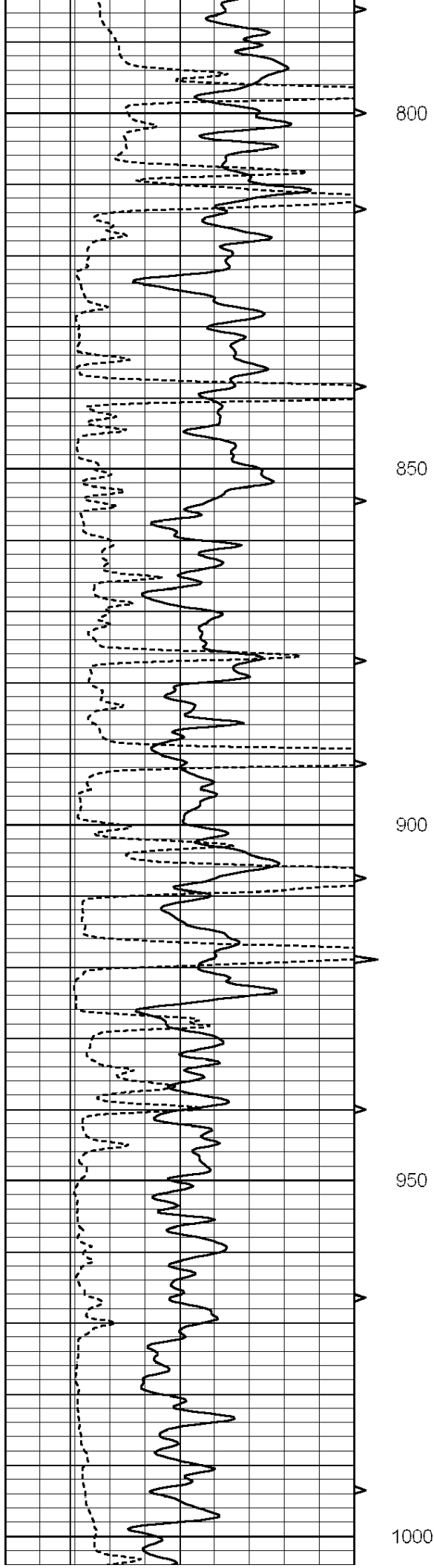
600

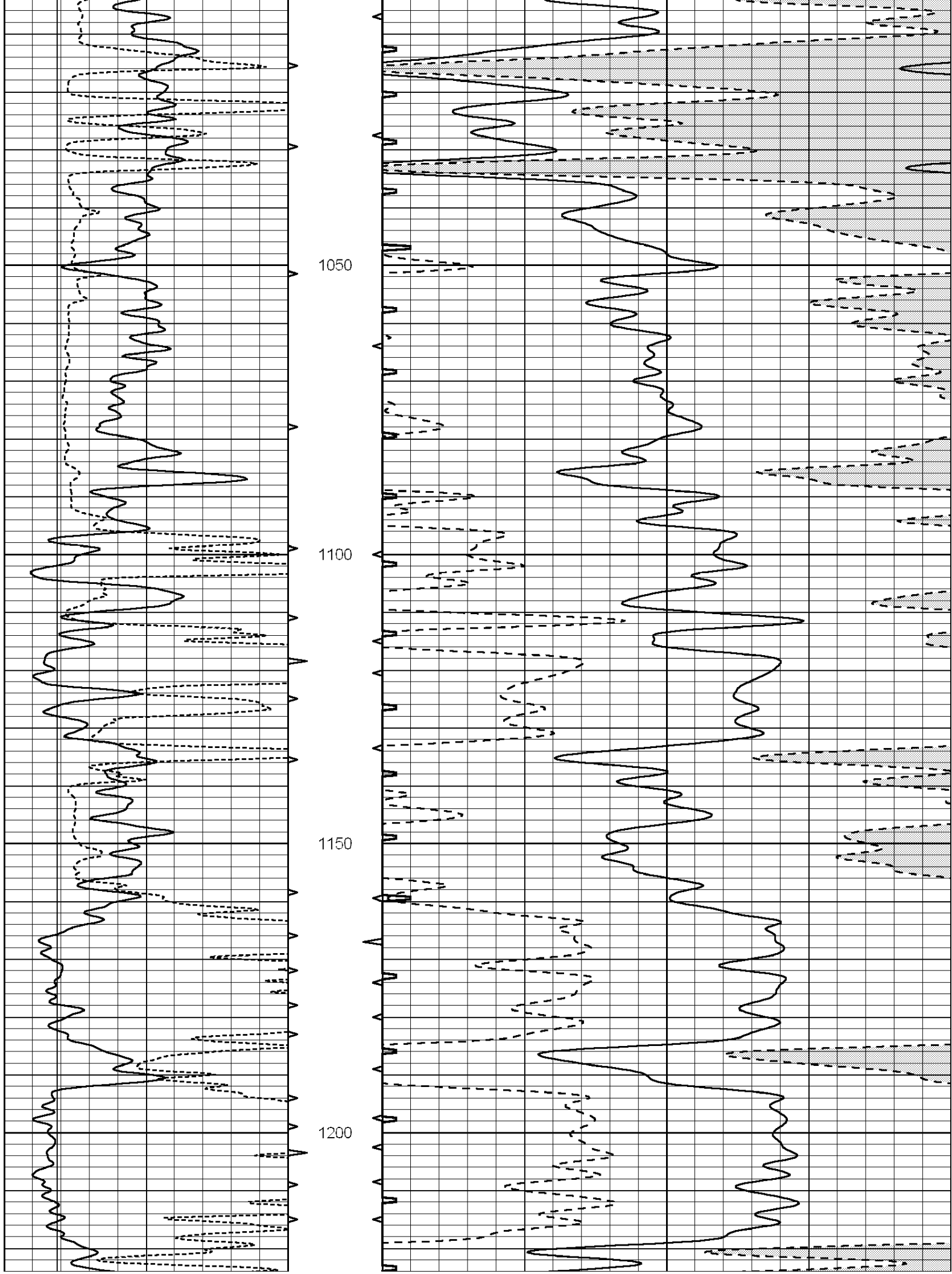
650

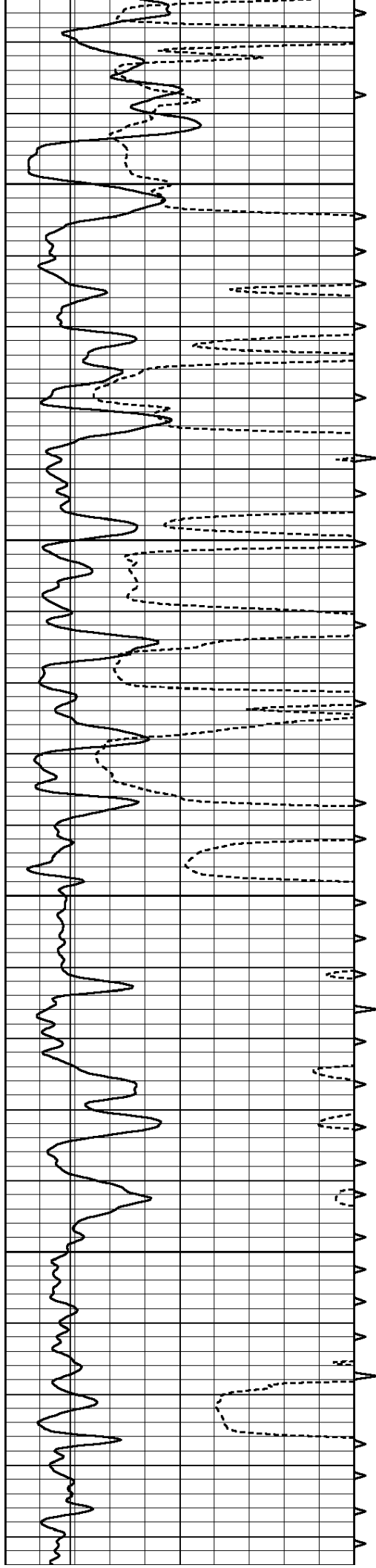
700

750







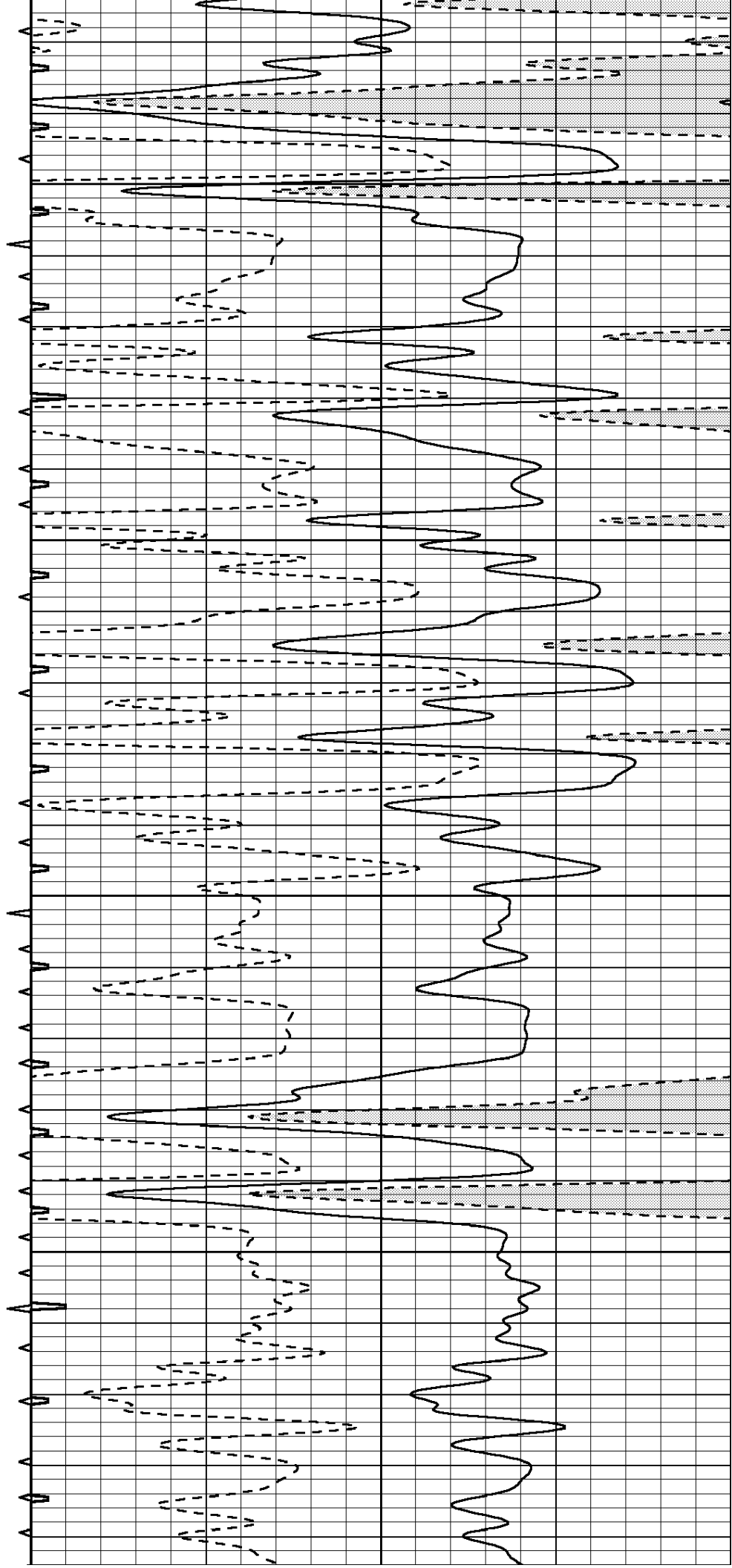


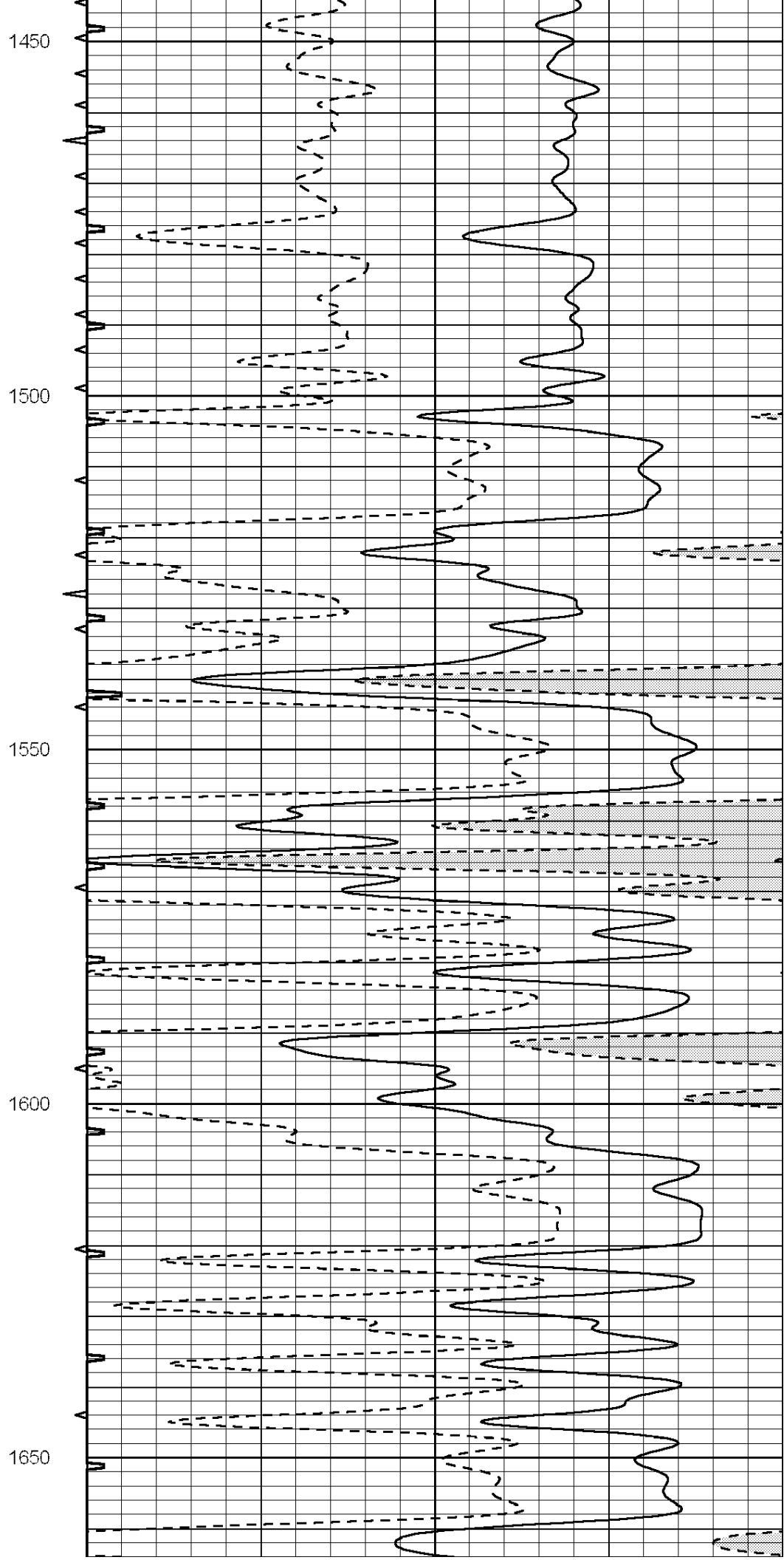
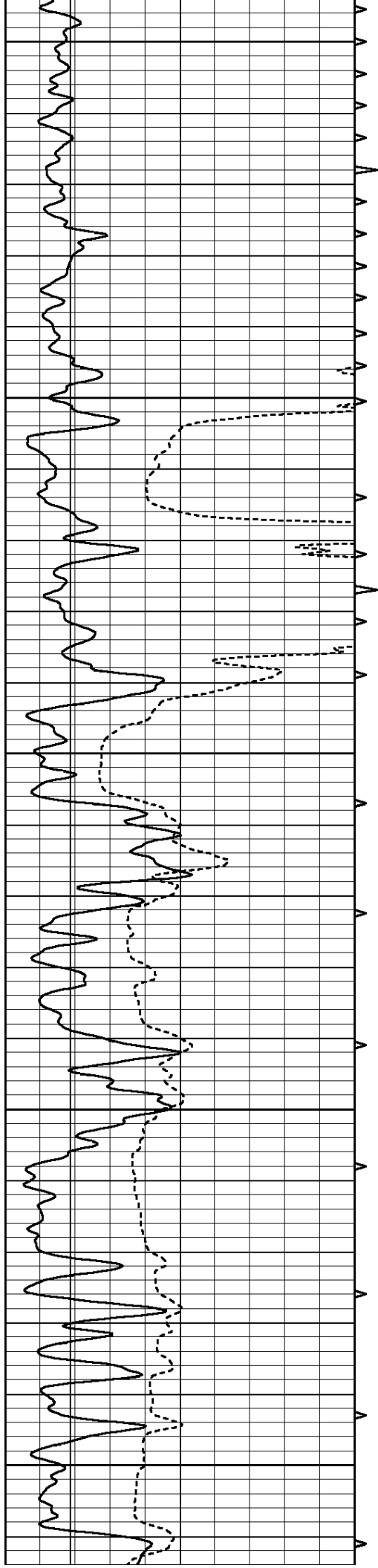
1250

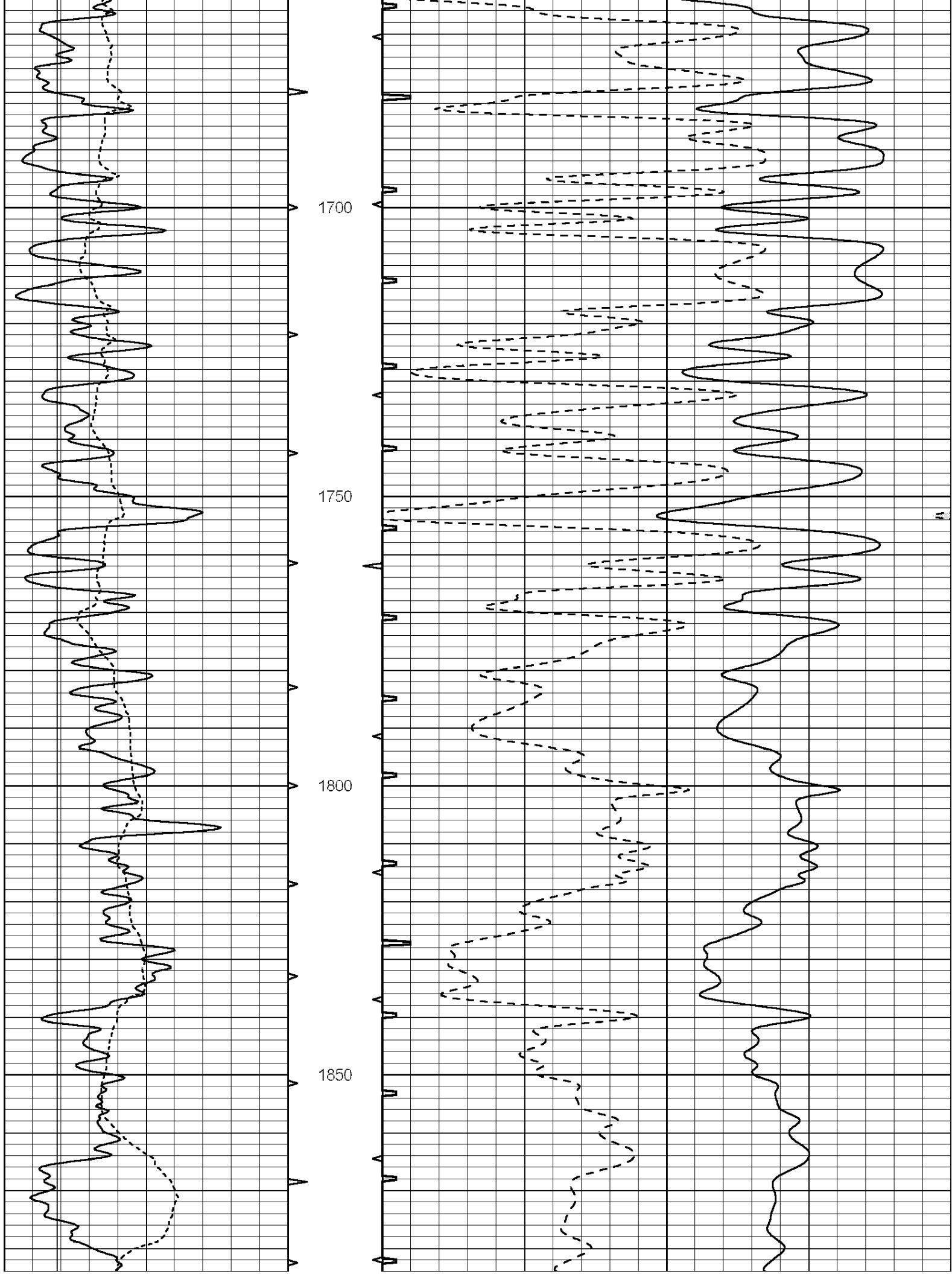
1300

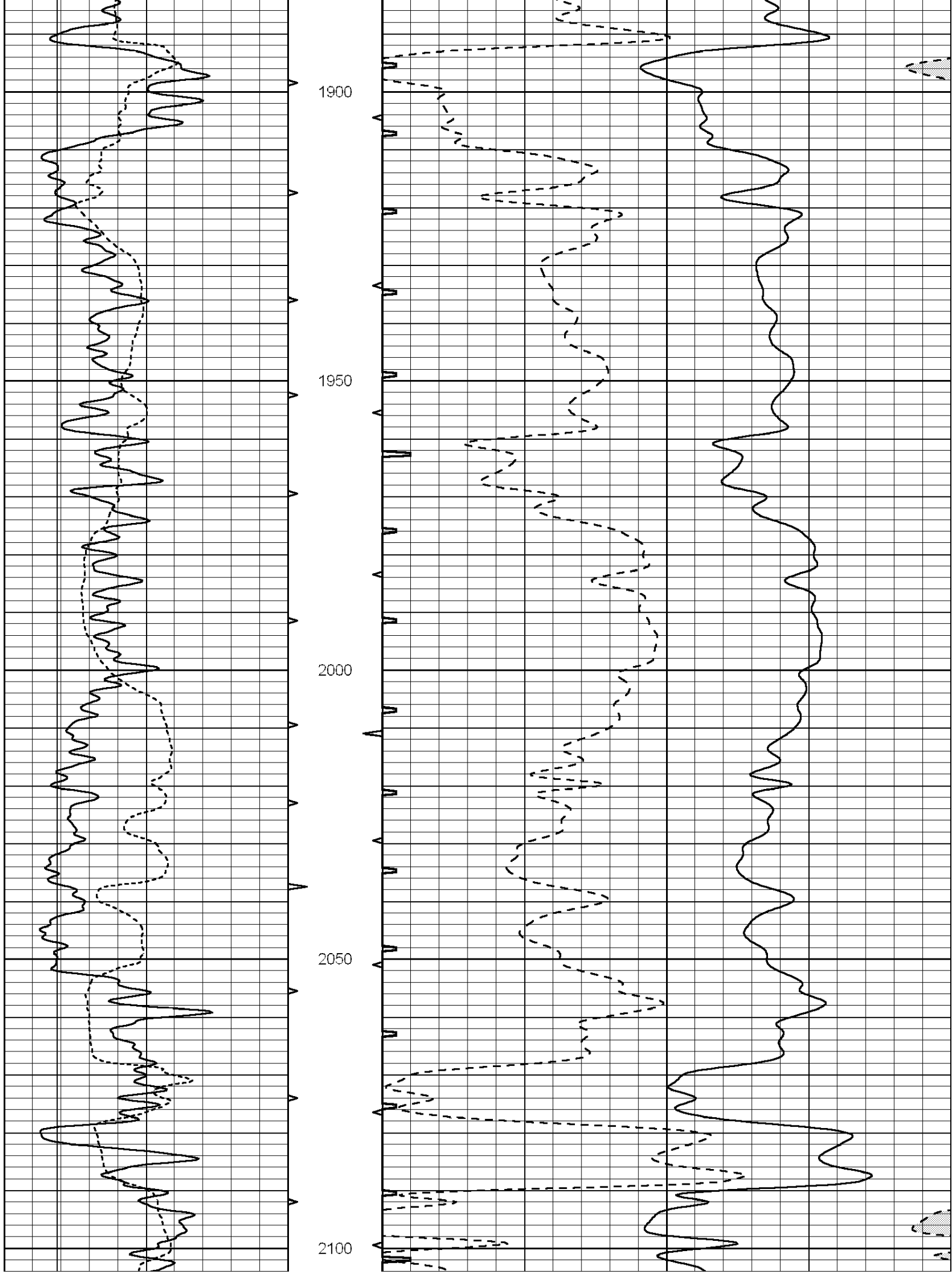
1350

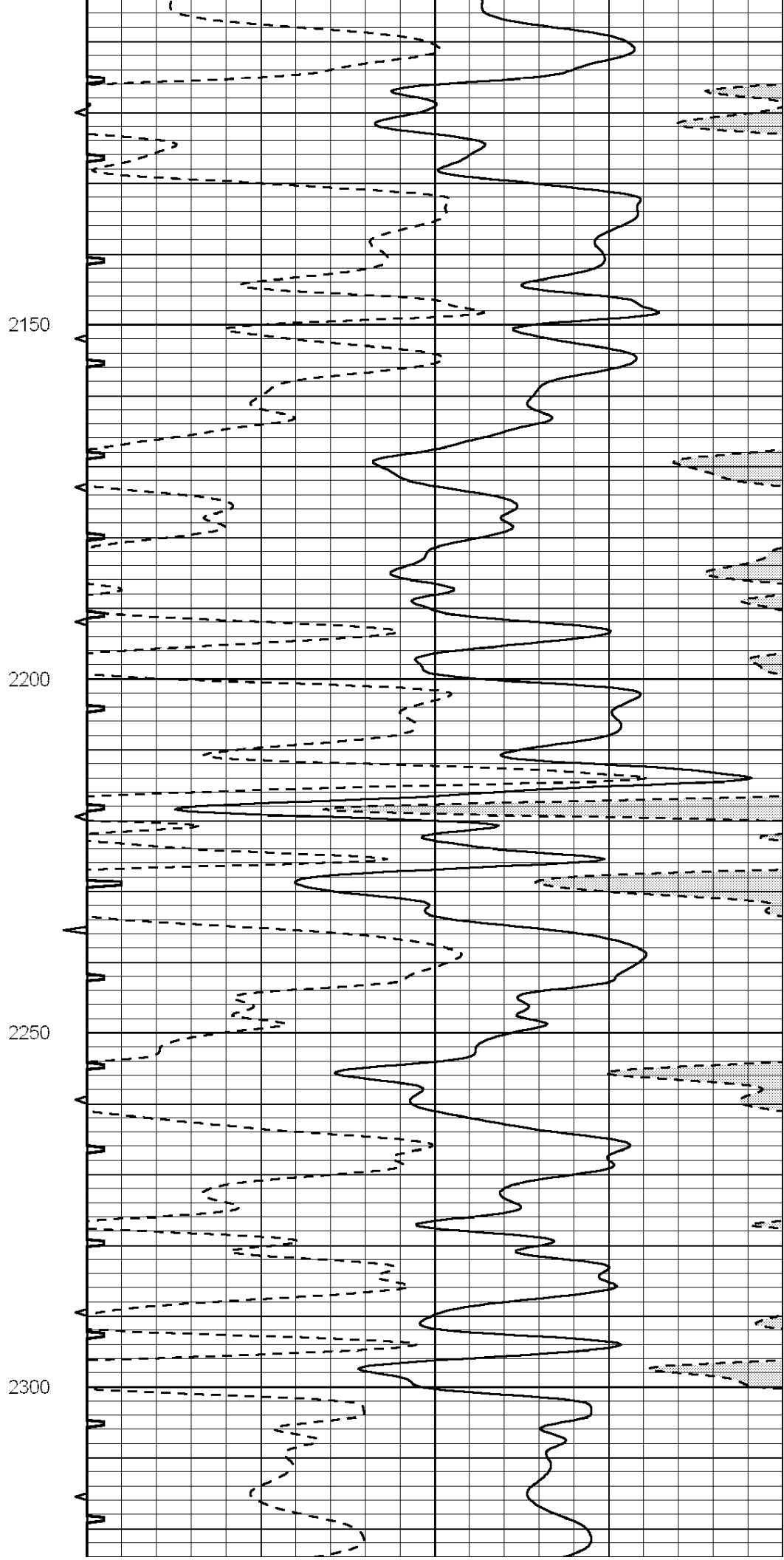
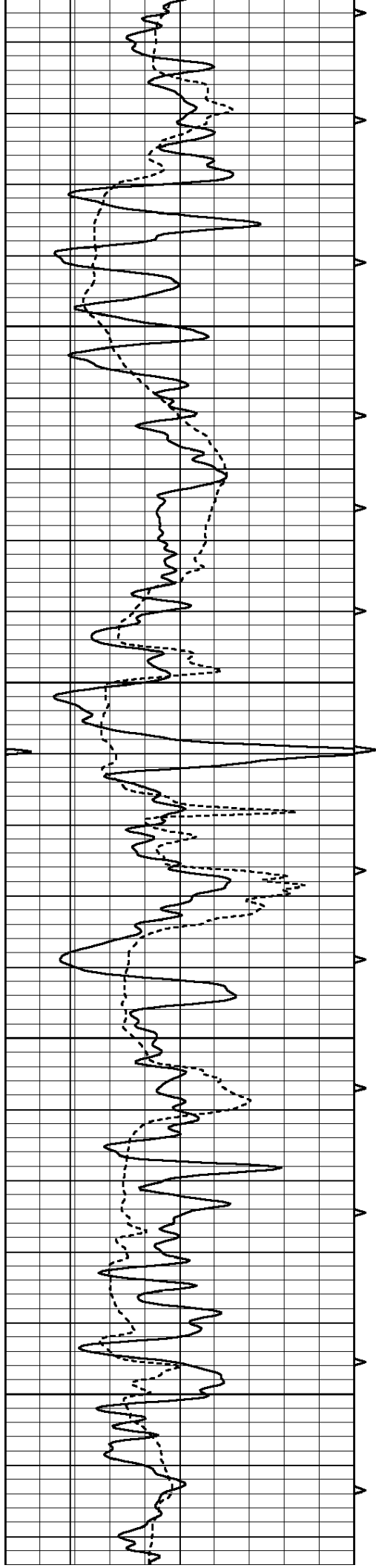
1400

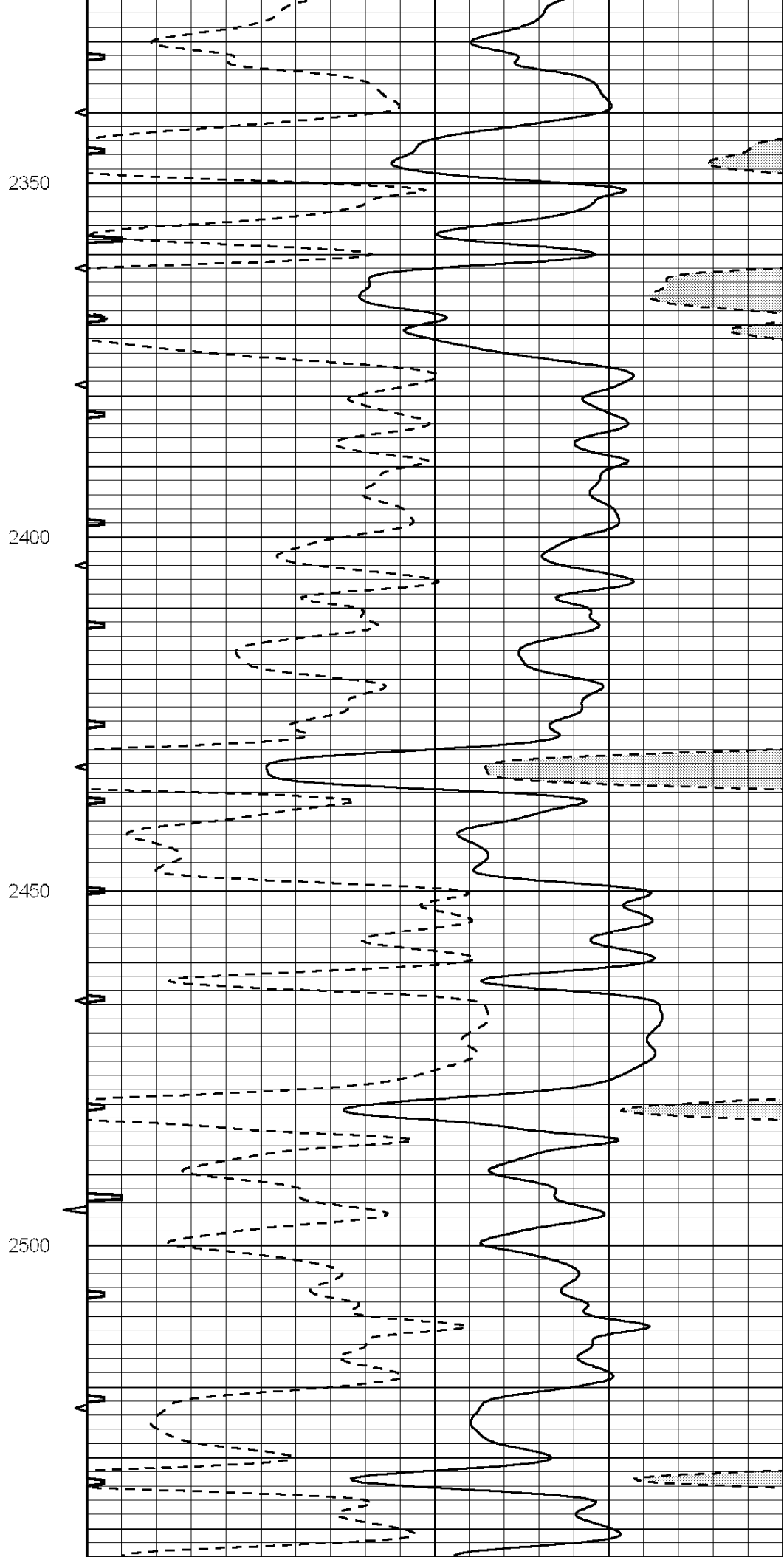
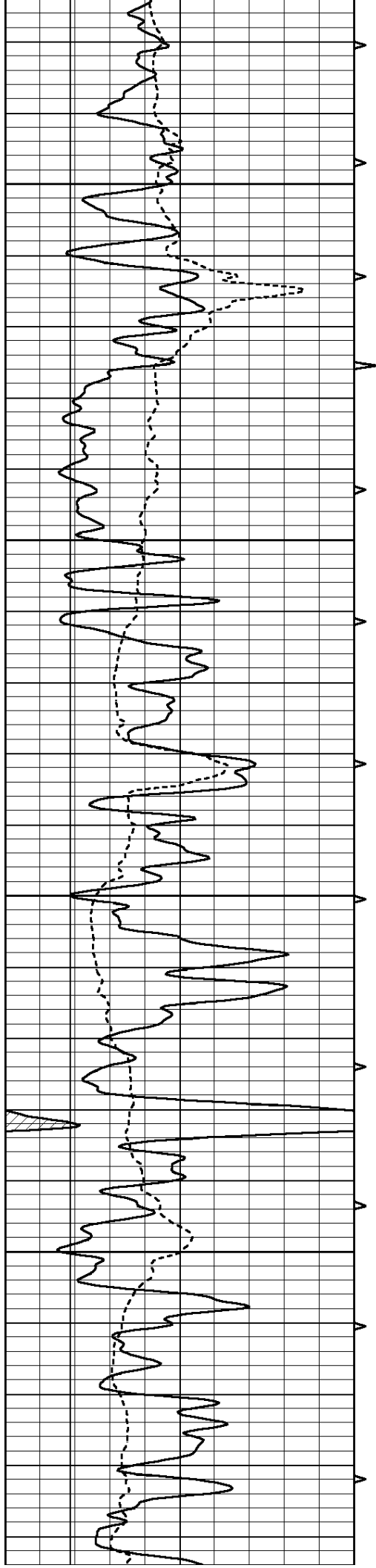


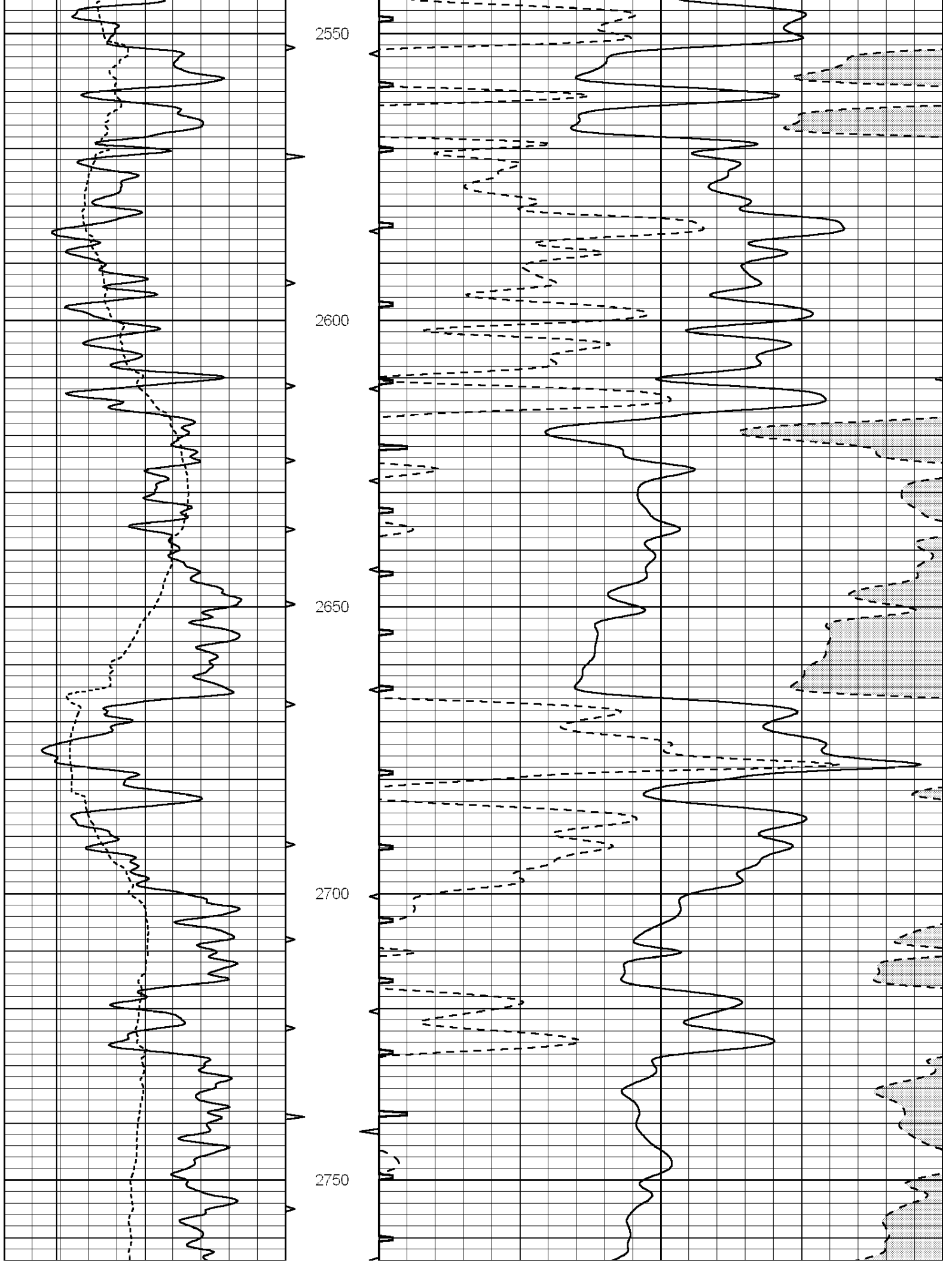


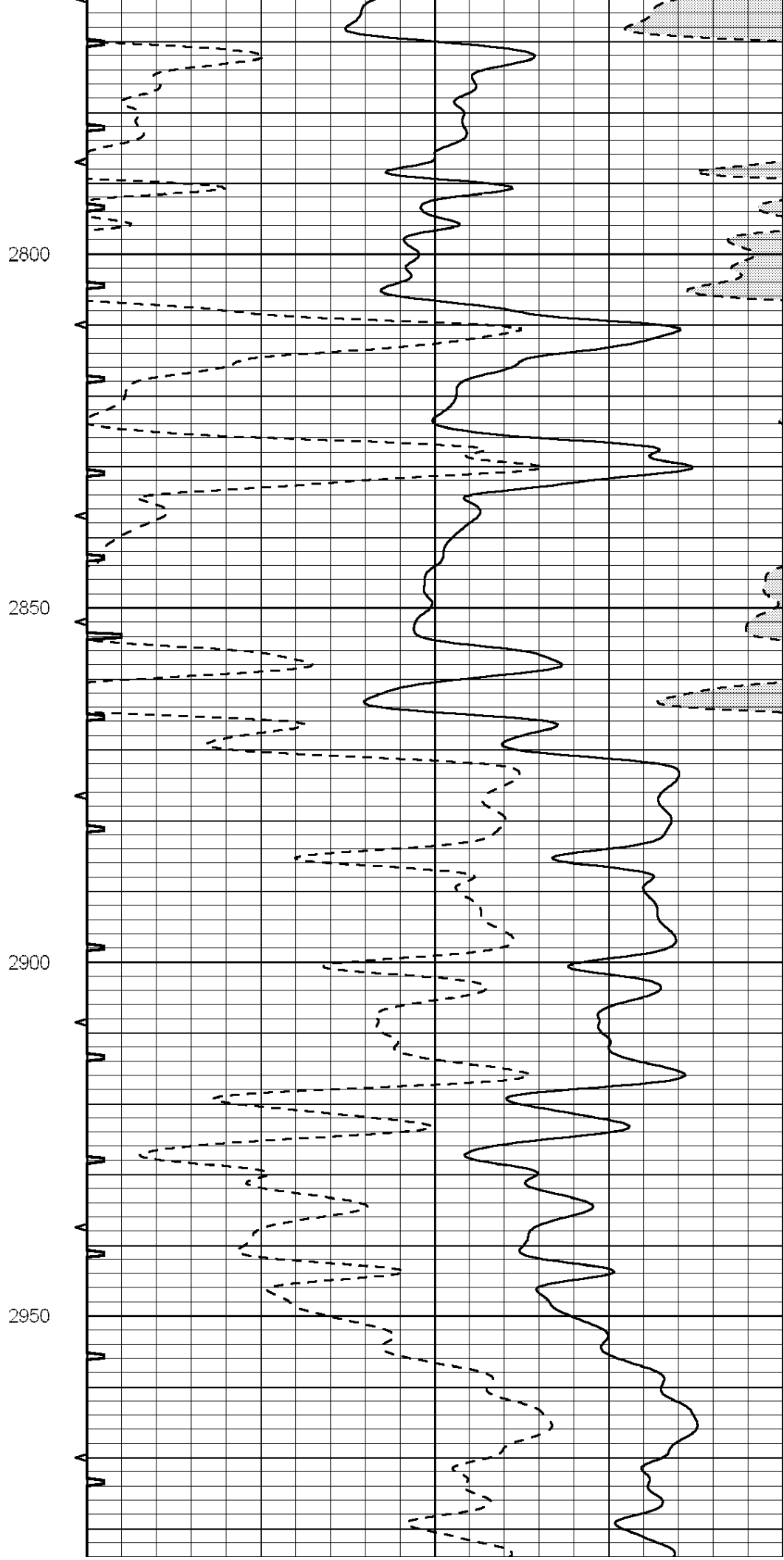
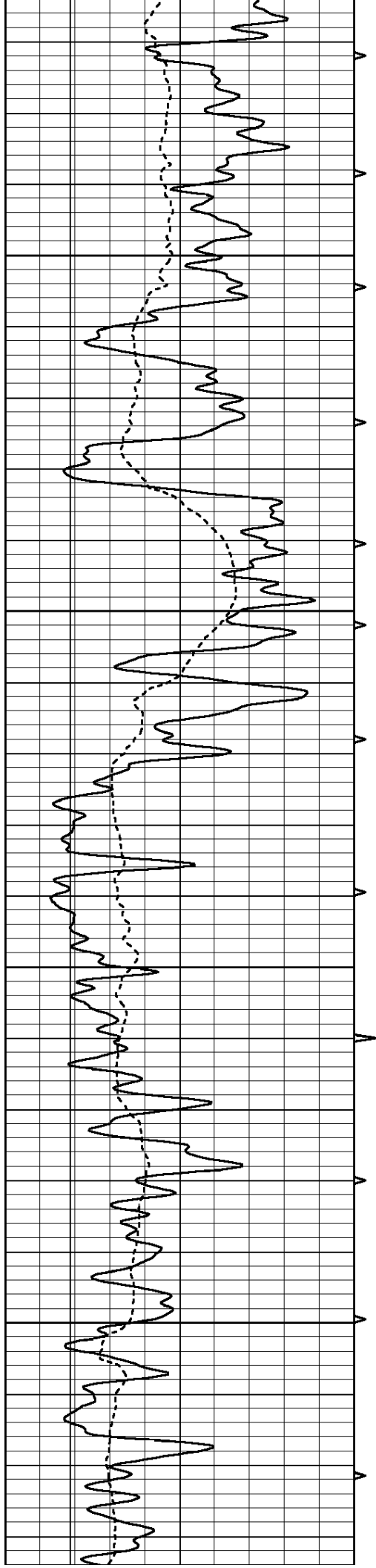


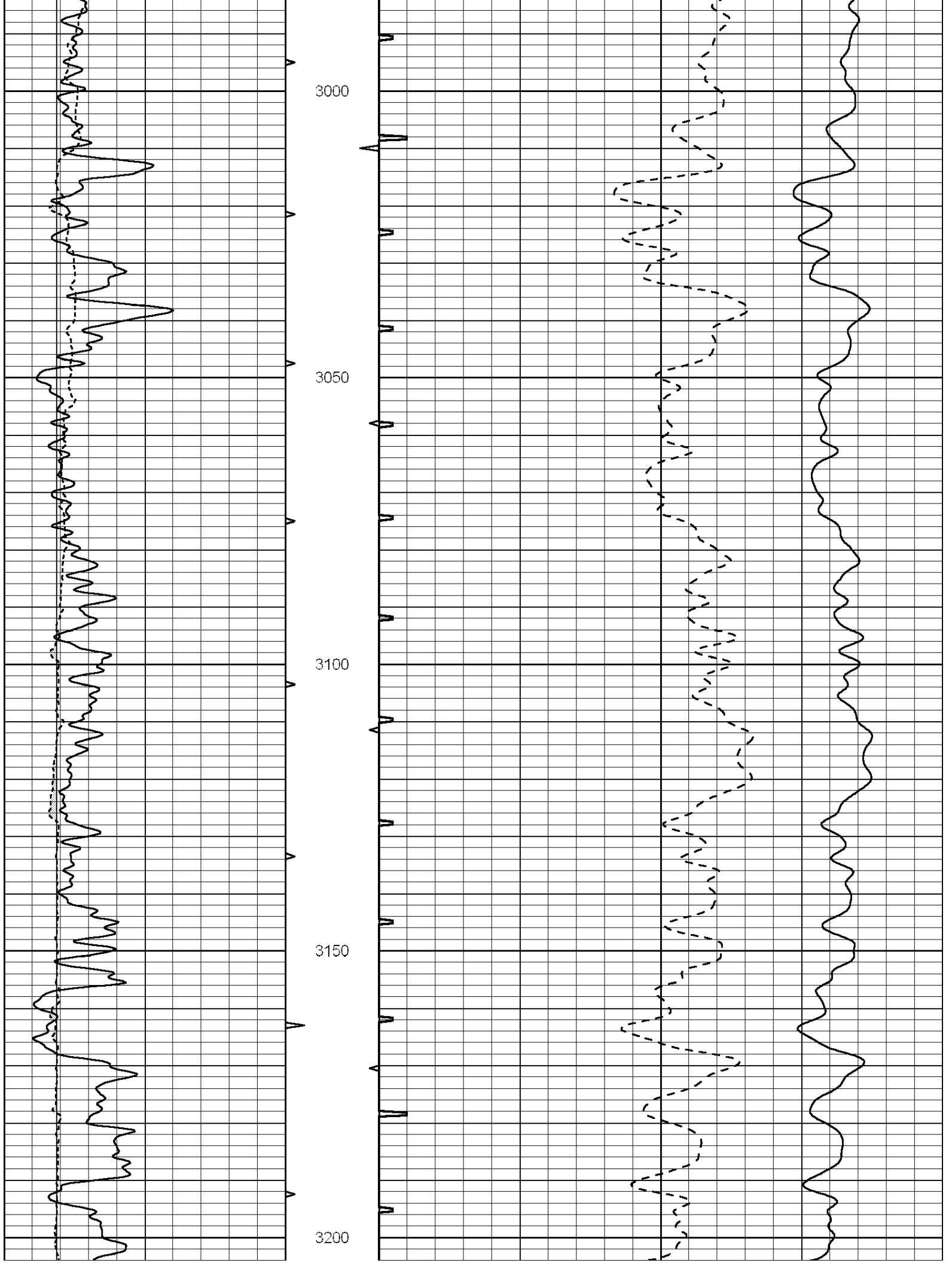


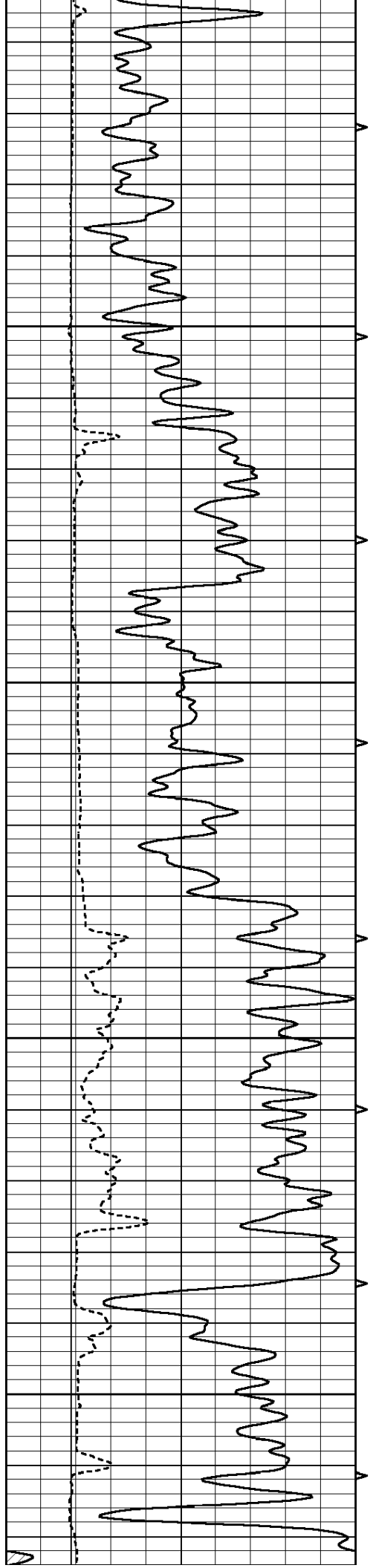










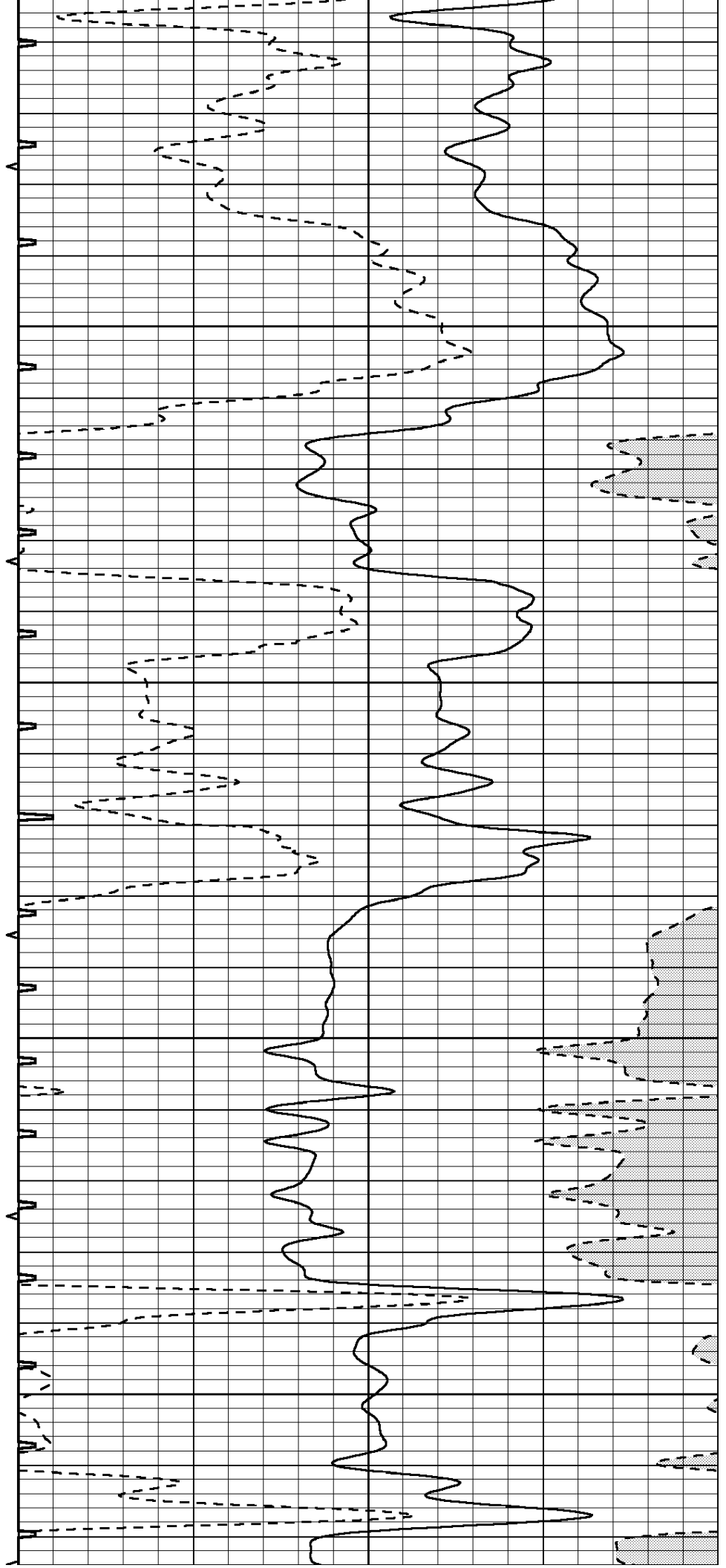


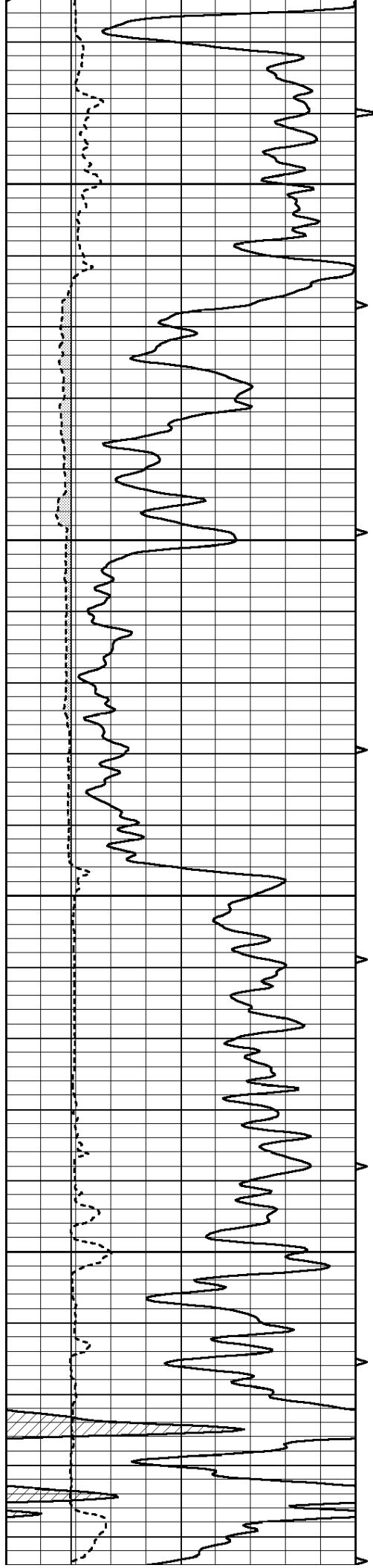
3250

3300

3350

3400



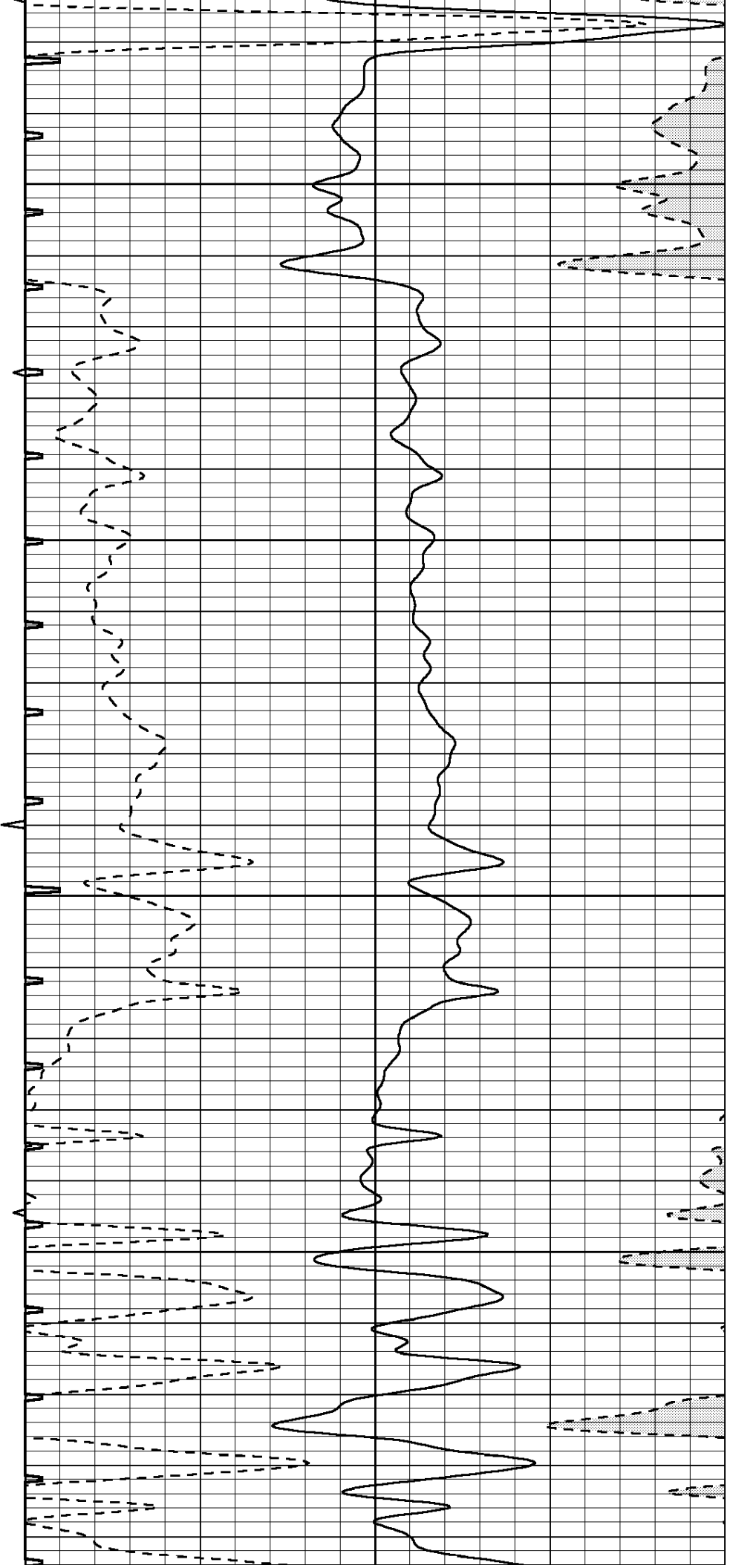


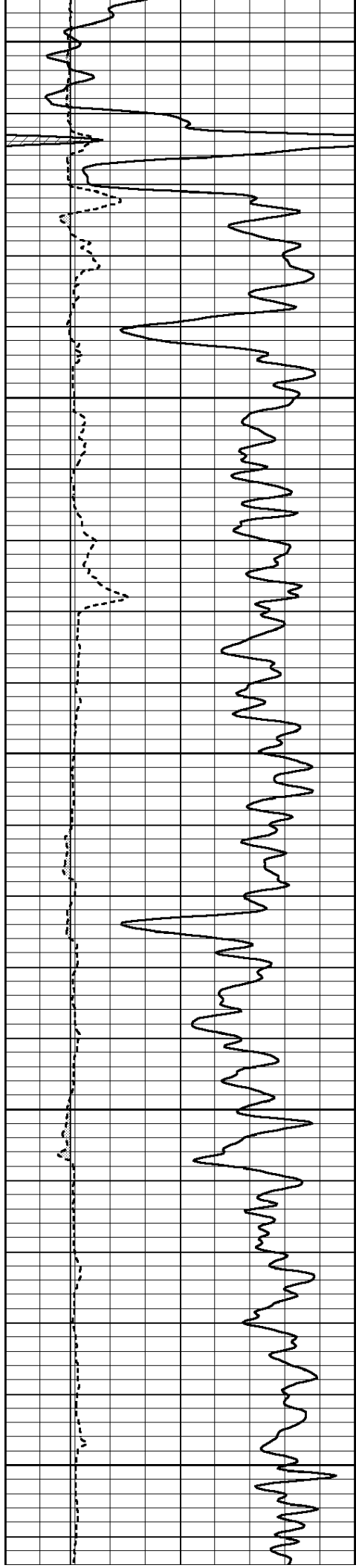
3450

3500

3550

3600





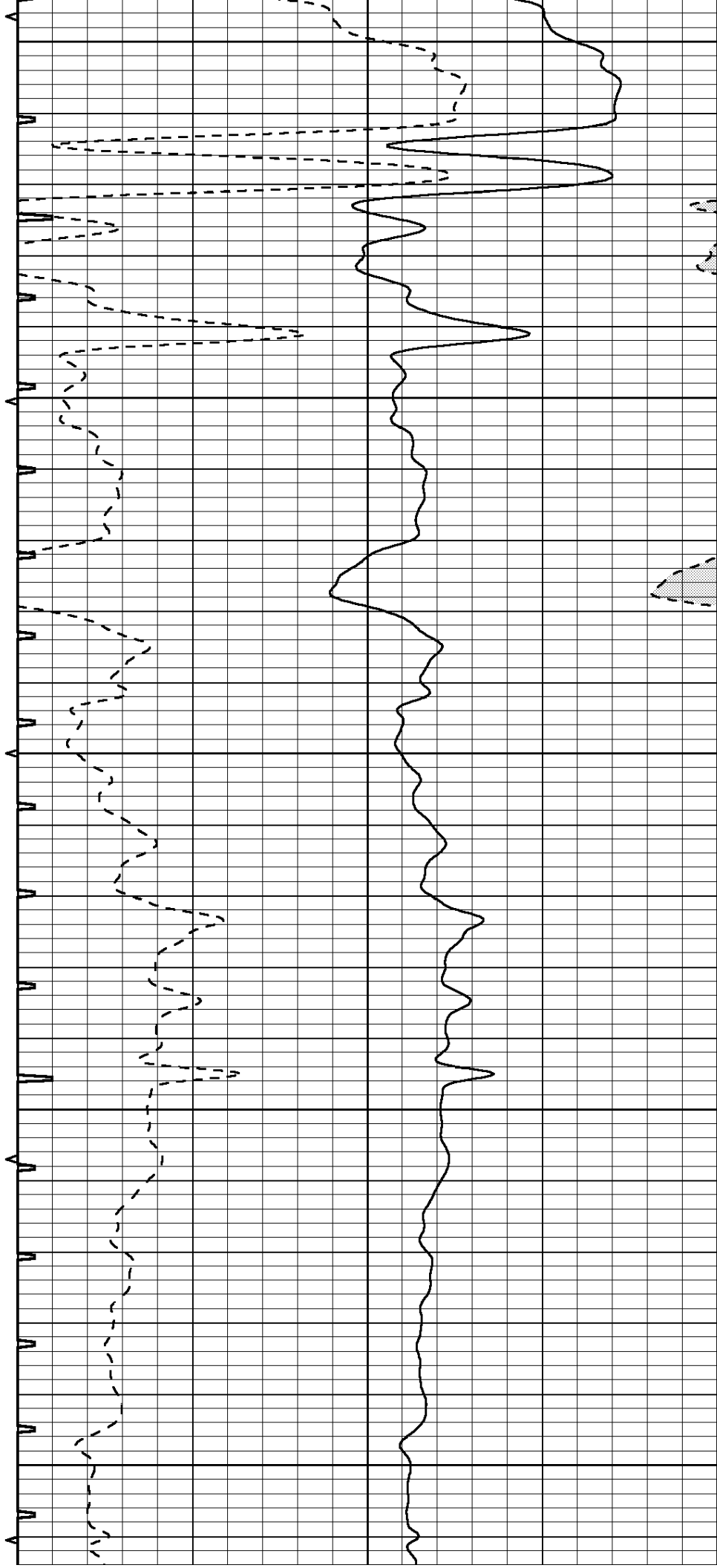
3650

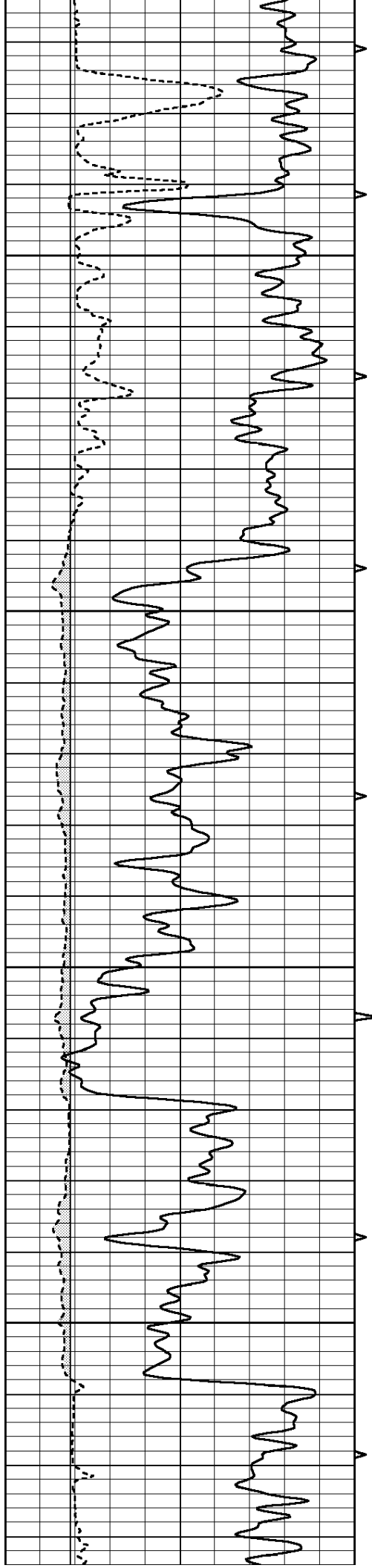
3700

3750

3800

3850



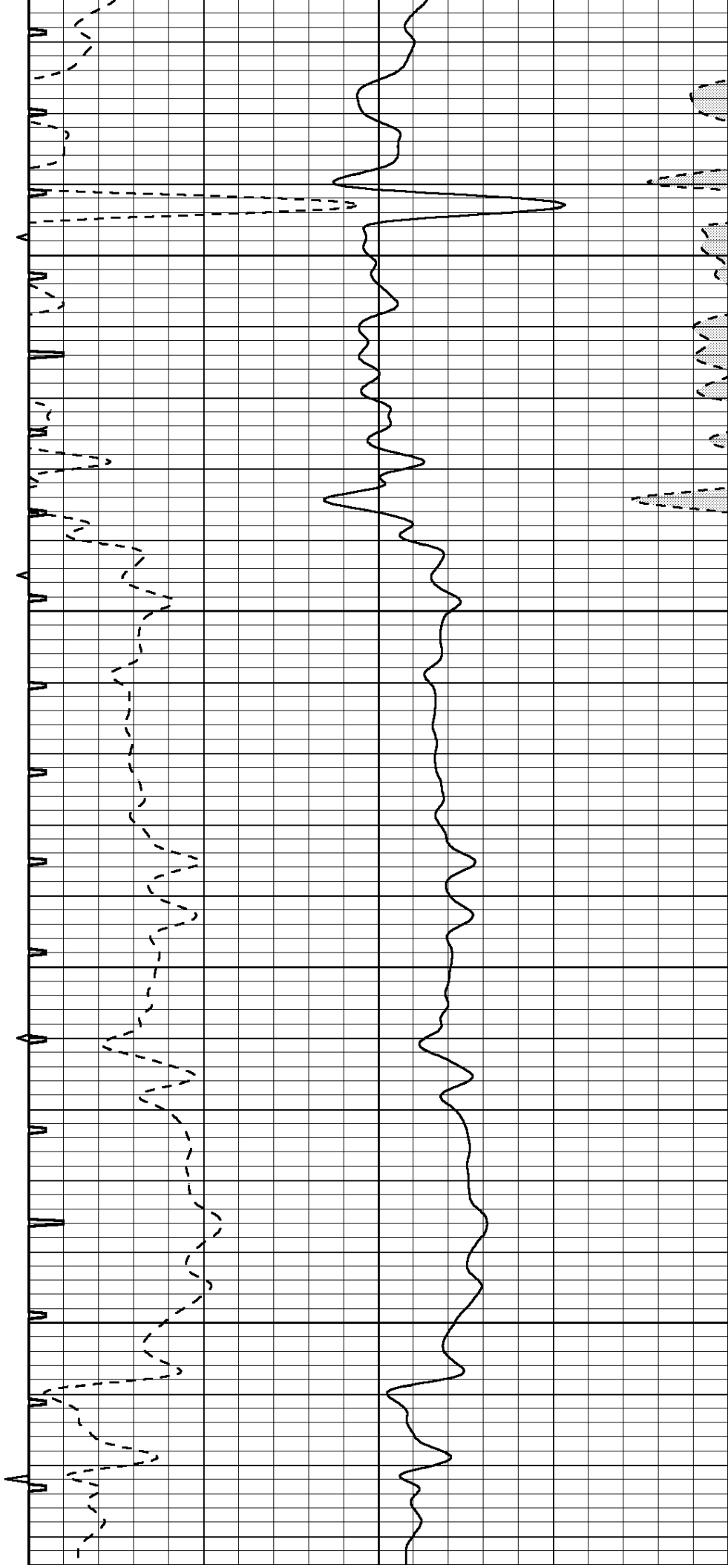


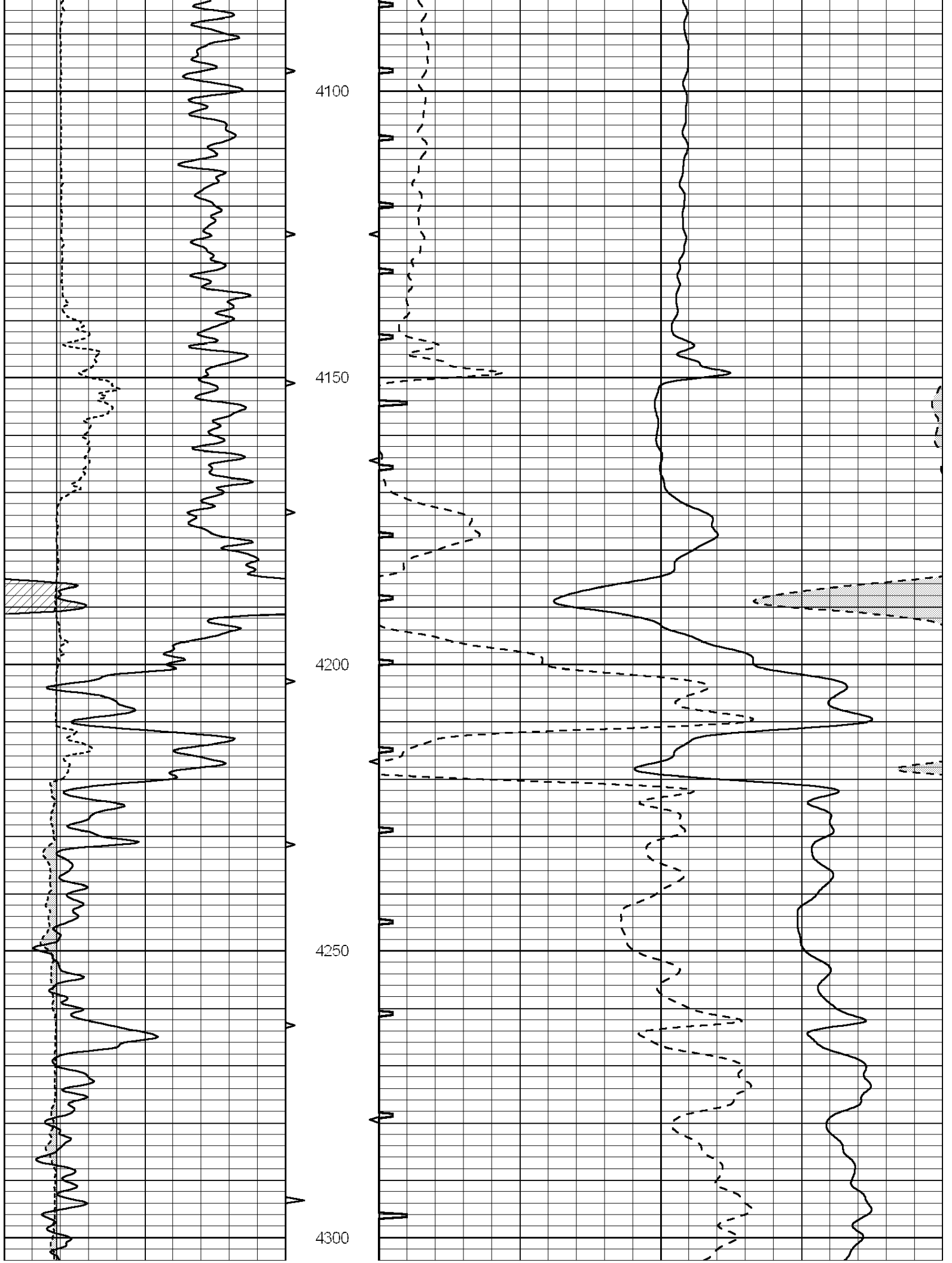
3900

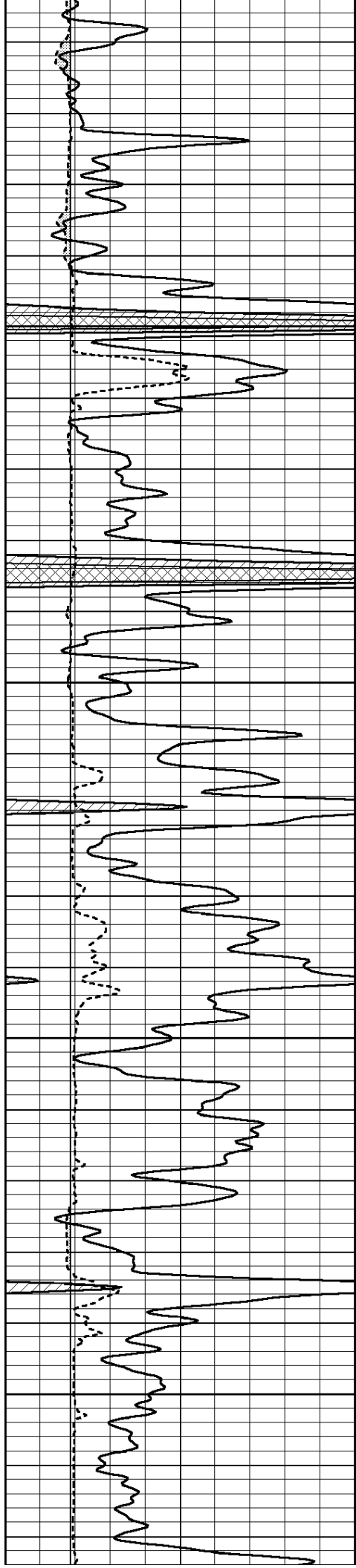
3950

4000

4050





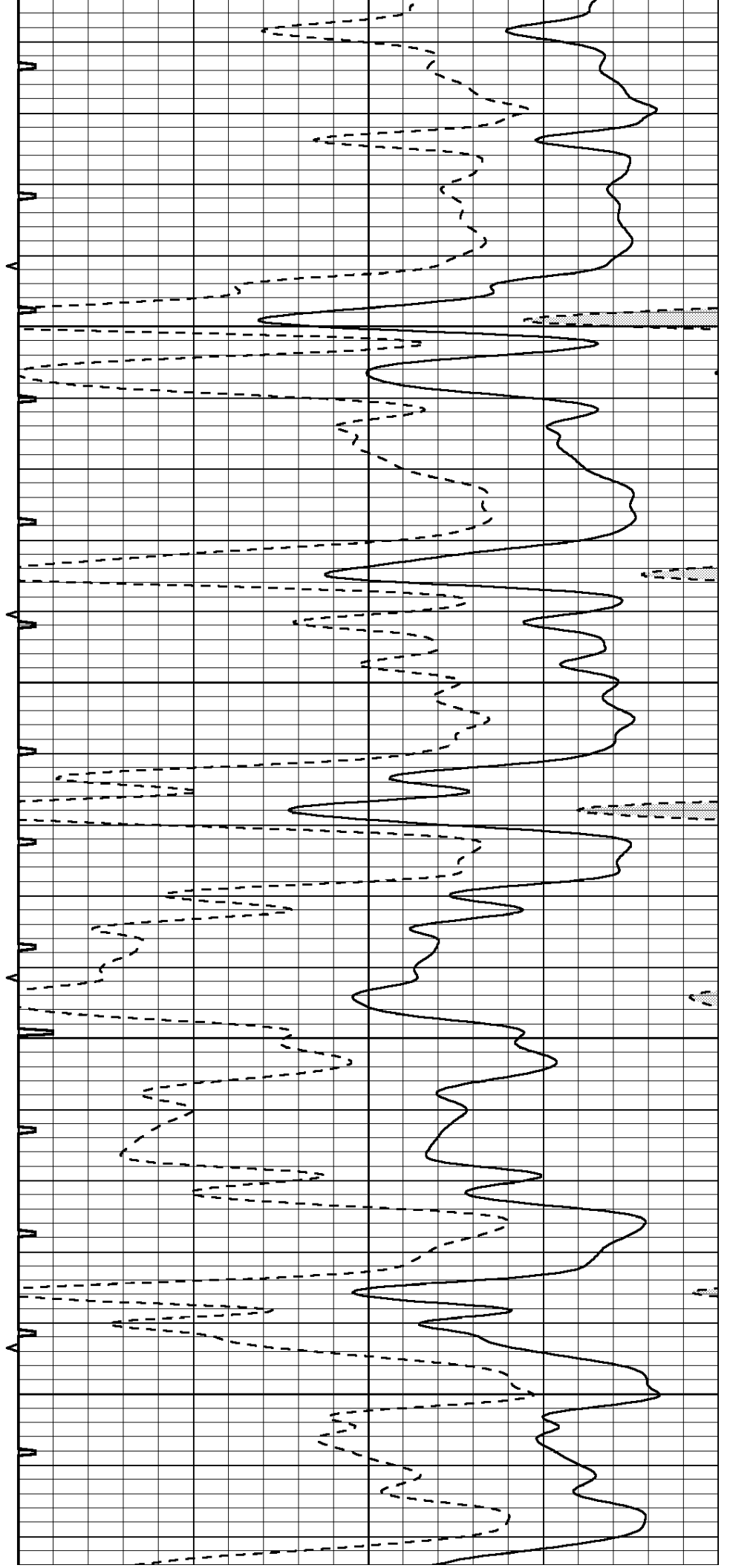


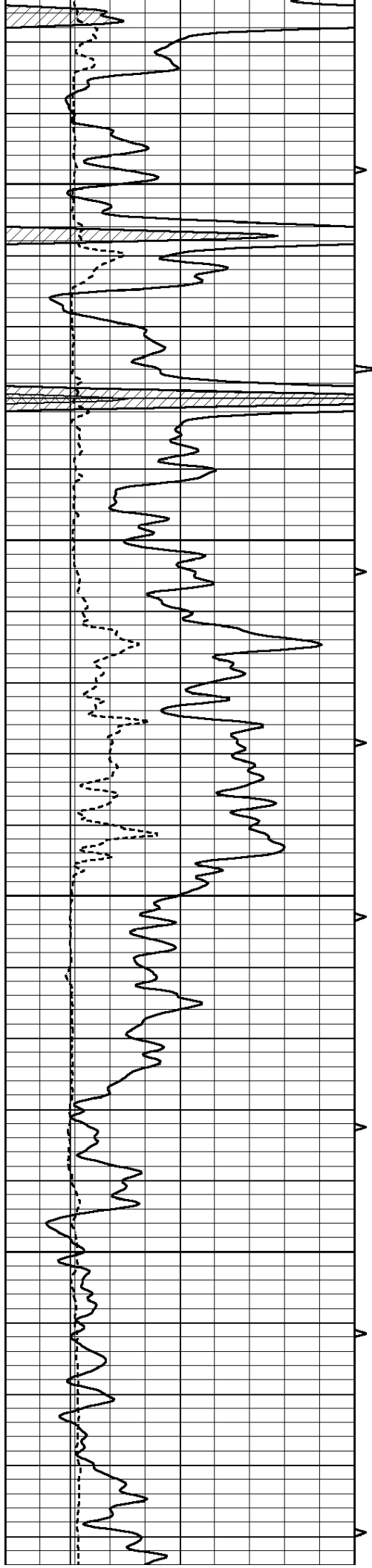
4350

4400

4450

4500



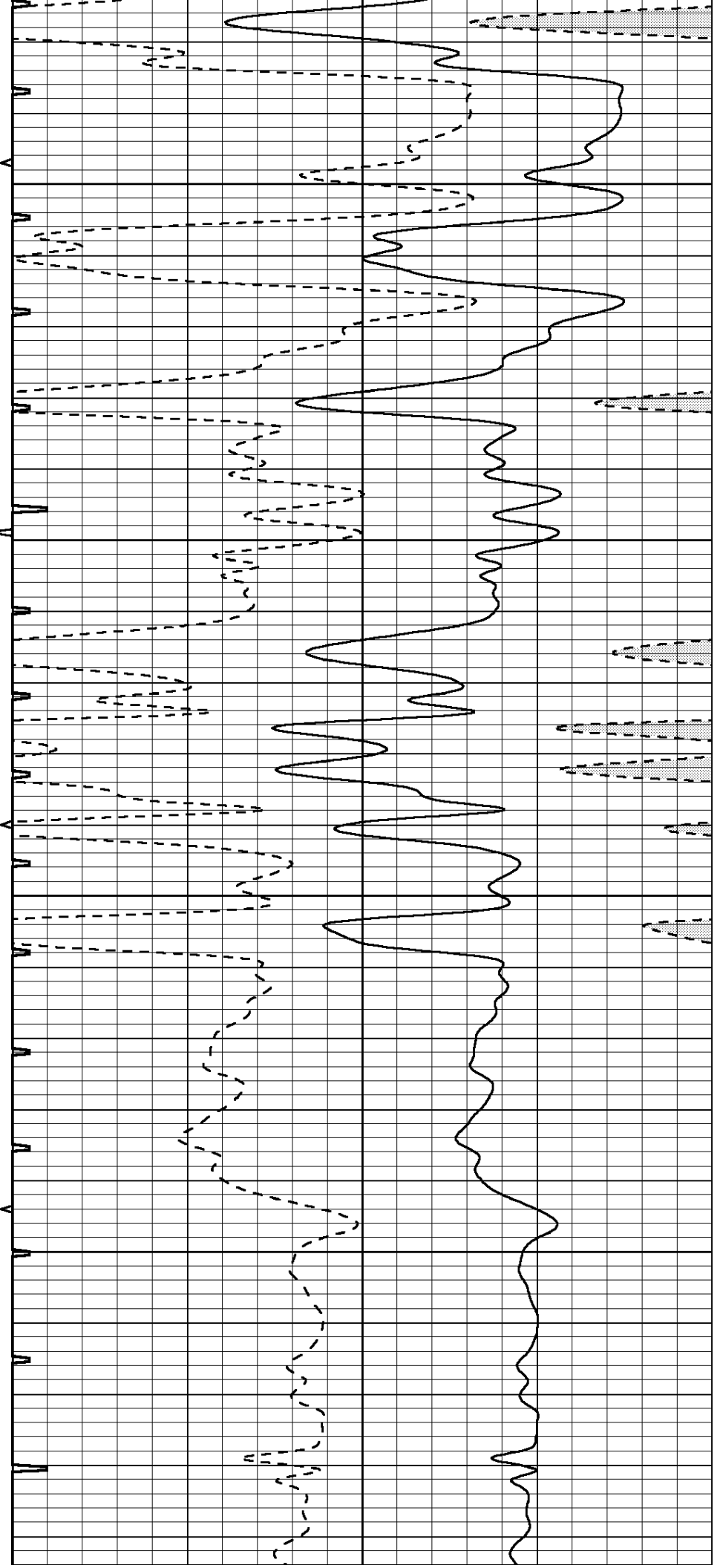


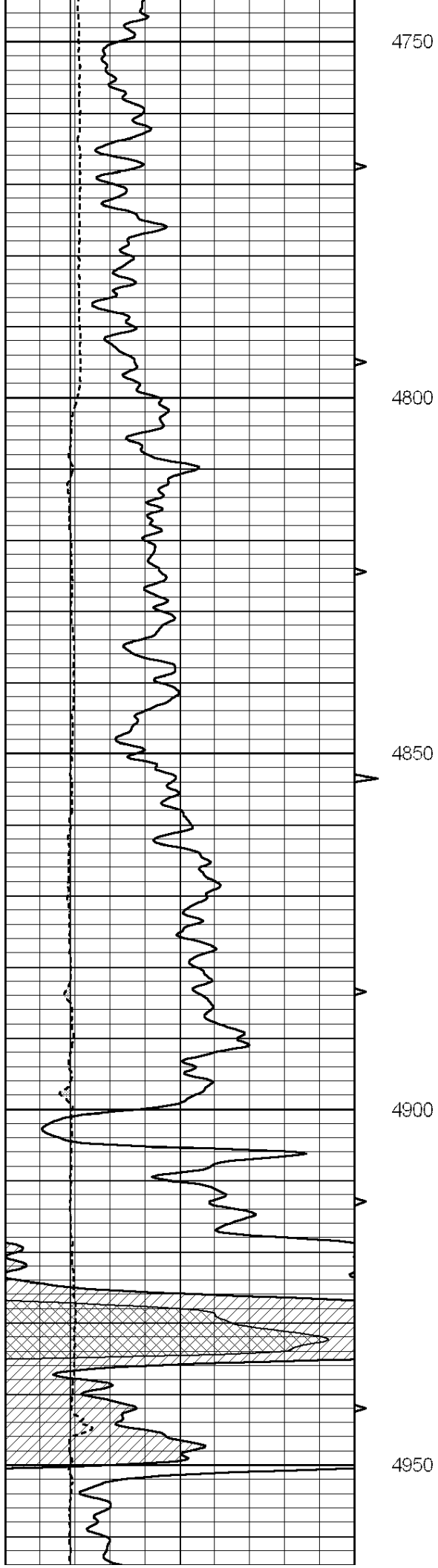
4550

4600

4650

4700





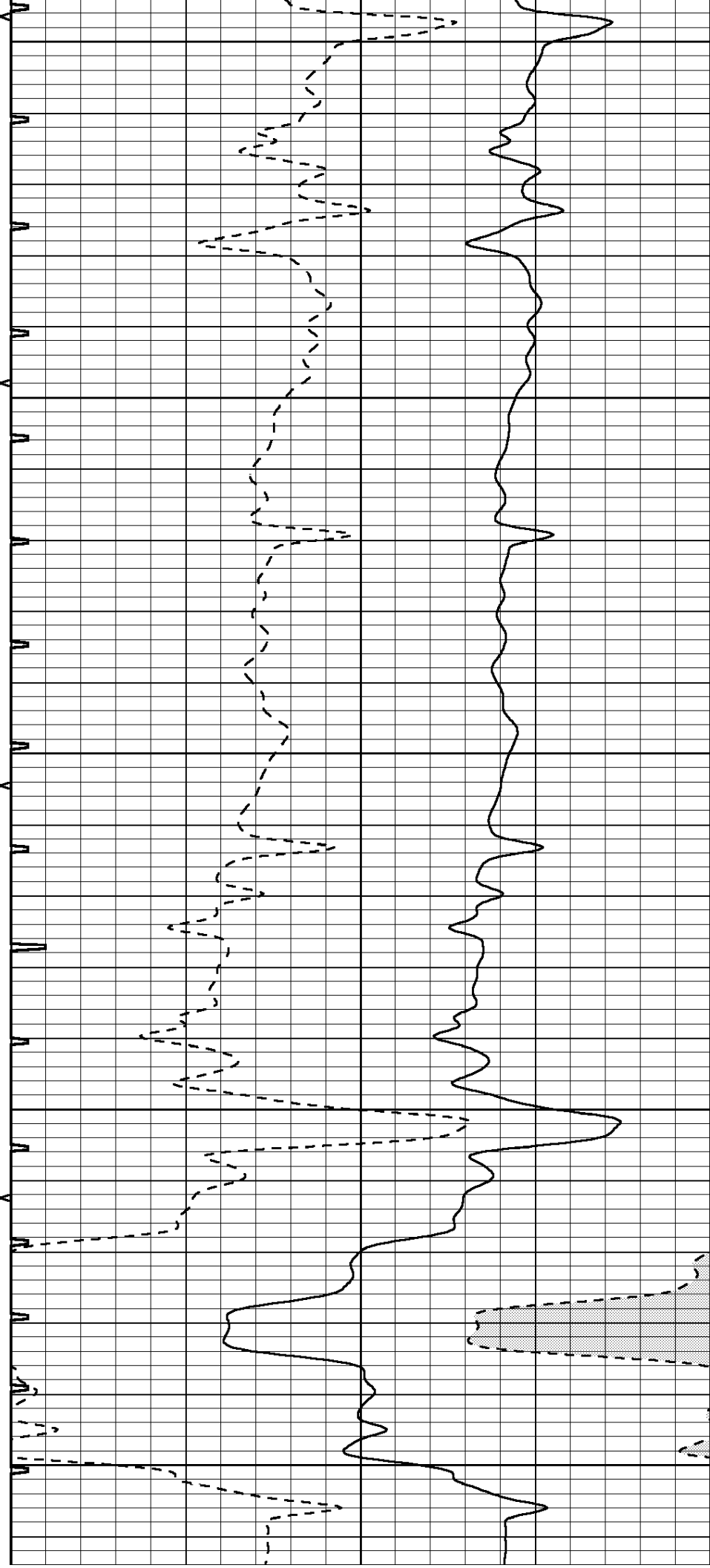
4750

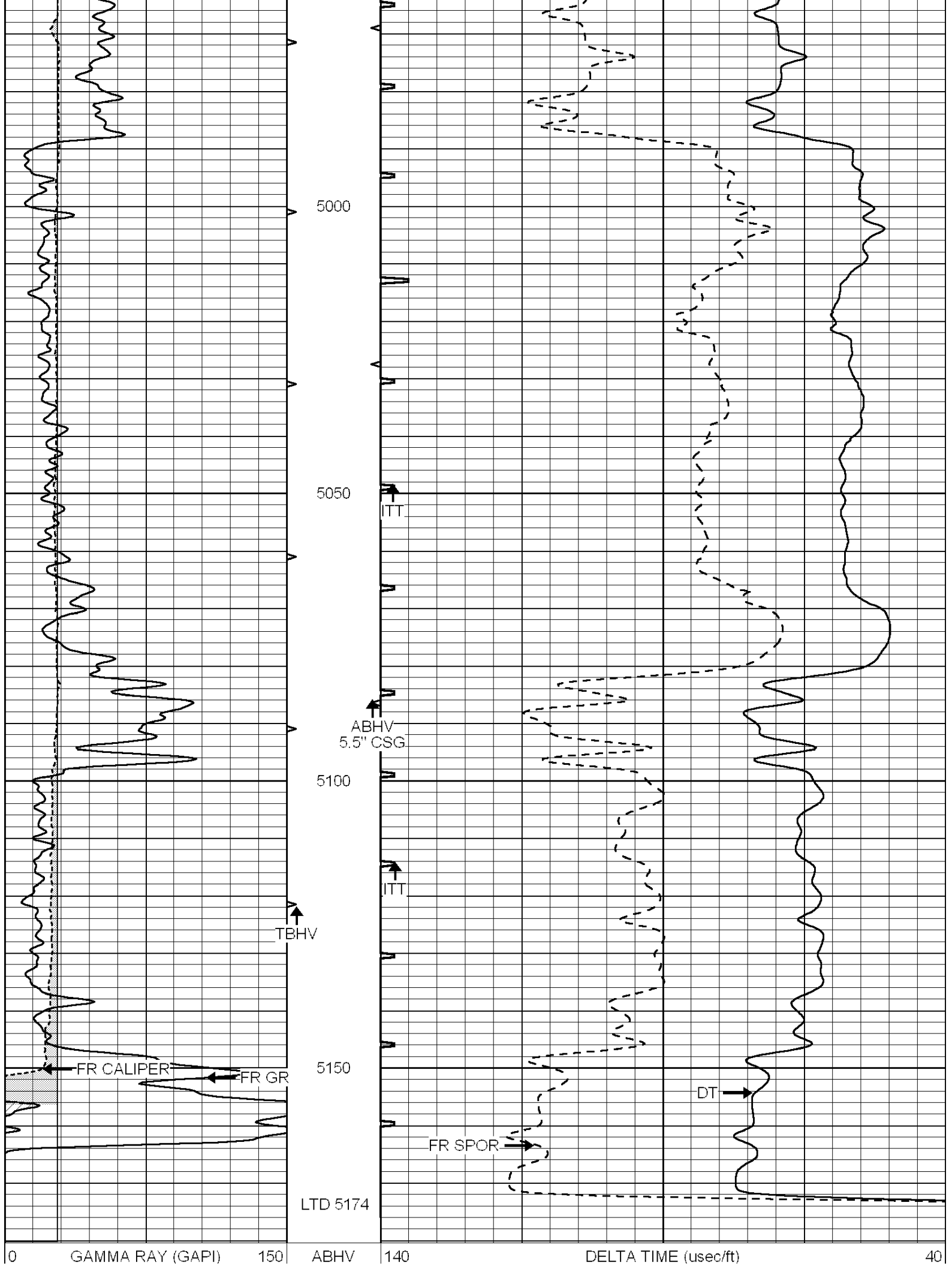
4800

4850

4900

4950





6	CALIPER (in)	16	10 (ft3)	0	30	SONIC POROSITY (pu)	-10
		TBHV		0	ITT (msec)		20
		0 (ft3)		10			



SUPERIOR  
Hays,  
Kansas

# REPEAT SECTION

Database File: 009222pe.db  
 Dataset Pathname: pass5.2  
 Presentation Format: \_slt  
 Dataset Creation: Thu Jun 14 19:57:52 2012  
 Charted by: Depth in Feet scaled 1:240

0	GAMMA RAY (GAPI)	150	ABHV	140	DELTA TIME (usec/ft)		40
6	CALIPER (in)	16	10 (ft3)	0	30	SONIC POROSITY (pu)	-10
		TBHV		0	ITT (msec)		20
		0 (ft3)		10			

