



SUPERIOR
Hays,
Kansas

MICRO
LOG

Company PELICAN HILL OIL & GAS, INC.
Well NELSON #4-7
Field WILDCAT
County TREGO
State KANSAS

Company PELICAN HILL OIL & GAS, INC.
Well NELSON #4-7
Field WILDCAT
County TREGO State KANSAS

Location: API # : 15-195-22805-0000
335' FSL & 335' FWL
NE-SW-SW-SW
SEC 7 TWP 11S RGE 21W
Permanent Datum GROUND LEVEL Elevation 2165
Log Measured From KELLY BUSHING 9' A.G.L.
Drilling Measured From KELLY BUSHING
Elevation
K.B. 2174
D.F. 2172
G.L. 2165

Date	10/1/12		
Run Number	TWO		
Depth Driller	3824		
Depth Logger	3825		
Bottom Logged Interval	3807		
Top Log Interval	3100		
Casing Driller	8 5/8" @ 267		
Casing Logger	272		
Bit Size	7 7/8		
Type Fluid in Hole	CHEMICAL MUD	CHLORIDES 2100 PPM	
Density / Viscosity	9.0/43		
pH / Fluid Loss	11.5/6.8		
Source of Sample	FLOWLINE		
Rin @ Meas. Temp	1.00 @ 75F		
Rmf @ Meas. Temp	0.75 @ 75F		
Rmc @ Meas. Temp	0.90 @ 75F		
Source of Rmf / Rmc	MEASURED		
Rin @ BHT	.65 @ 114F		
Time Circulation Stopped	2 HOURS		
Time Logger on Bottom			
Maximum Recorded Temperature	114F		
Equipment Number	680		
Location	HAYS, KS.		
Recorded By	JASON CAPPELLUCCI	IAN MABB	
Witnessed By	MARC DOWNING		

<<< Fold Here >>>

All interpretations are opinions based on inferences from electrical or other measurements and we cannot and do not guarantee the accuracy or correctness of any interpretation, and we shall not, except in the case of gross or willful negligence on our part, be liable or responsible for any loss, costs, damages, or expenses incurred or sustained by anyone resulting from any interpretation made by any of our officers, agents or employees. These interpretations are also subject to our general terms and conditions set out in our current Price Schedule.

Comments

THANK YOU FOR USING SUPERIOR WELL SERVICE (785) 628-6395
DIRECTIONS
I 70 & RIGA EXIT - N. TO RD. A - 1 1/2 W. - 1 S. TO CURVE - 1 W. TO CURVE
1 S. - E. INTO

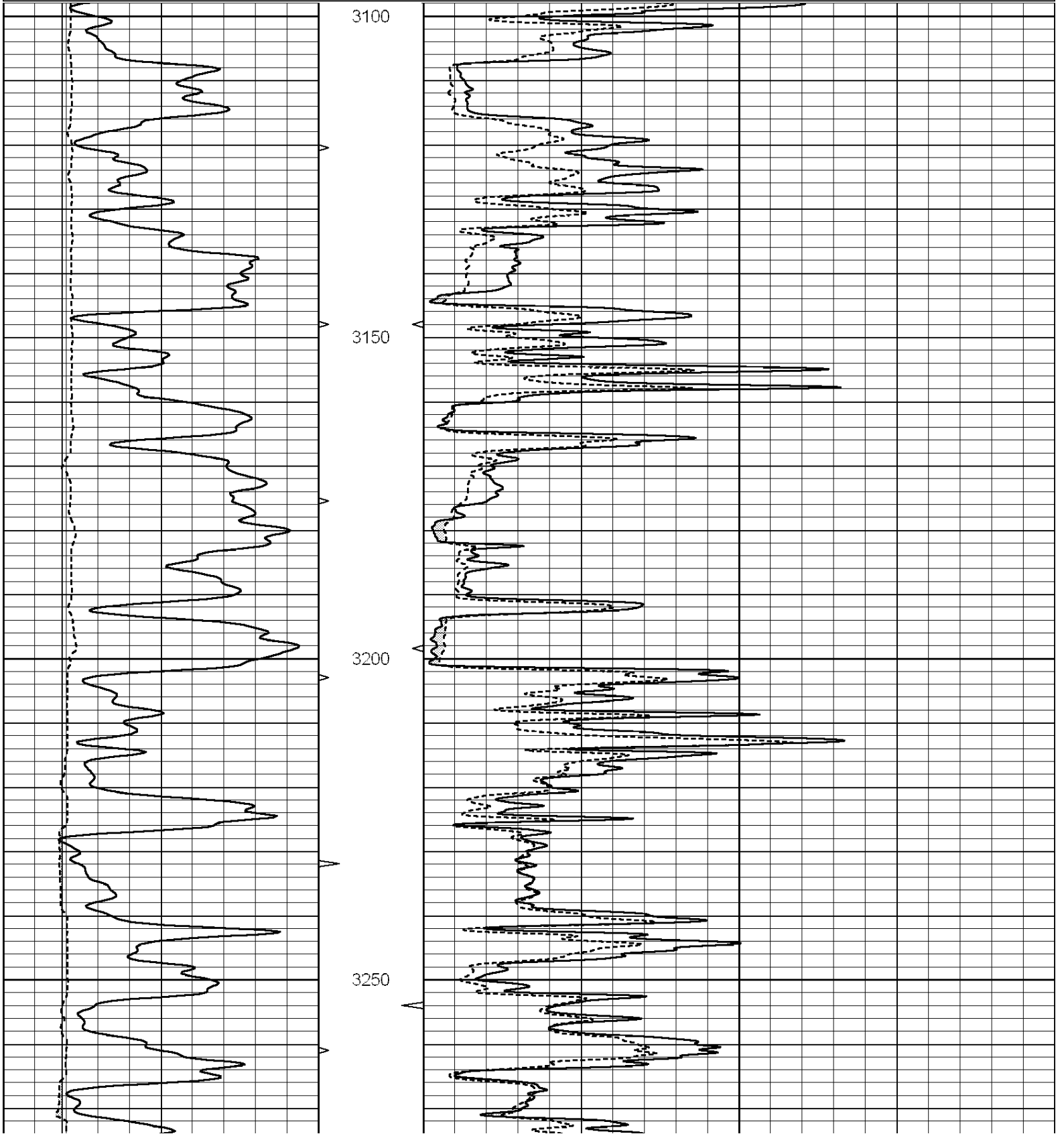


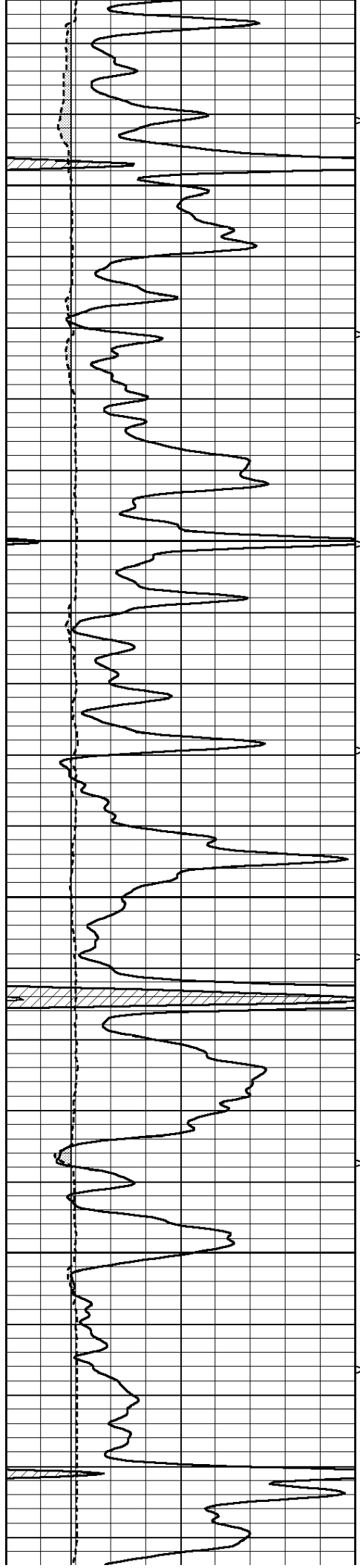
SUPERIOR
Hays,
Kansas

MAIN SECTION

Database File: 009741ddn.db
 Dataset Pathname: pass6.1
 Presentation Format: _micro
 Dataset Creation: Mon Oct 01 09:35:34 2012 by Calc Open-Cased 090629
 Charted by: Depth in Feet scaled 1:240

0	GAMMA RAY (GAPI)	150	ABHV	0	MEL1.5 (Ohm-m)	40
6	CALIPER (in)	16	10 (ft3)	0	MEL2.0 (Ohm-m)	40
			TBHV			
			0 (ft3)	10		



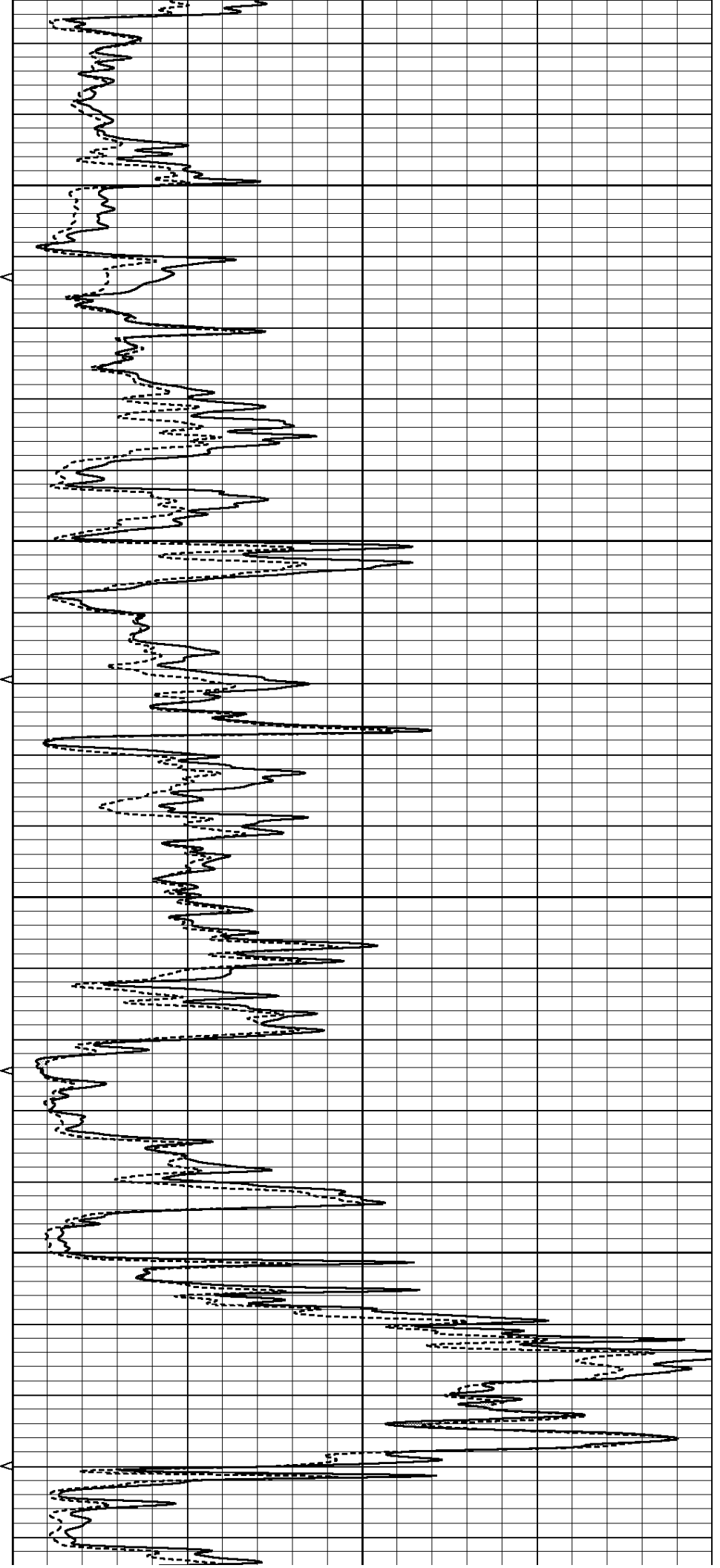


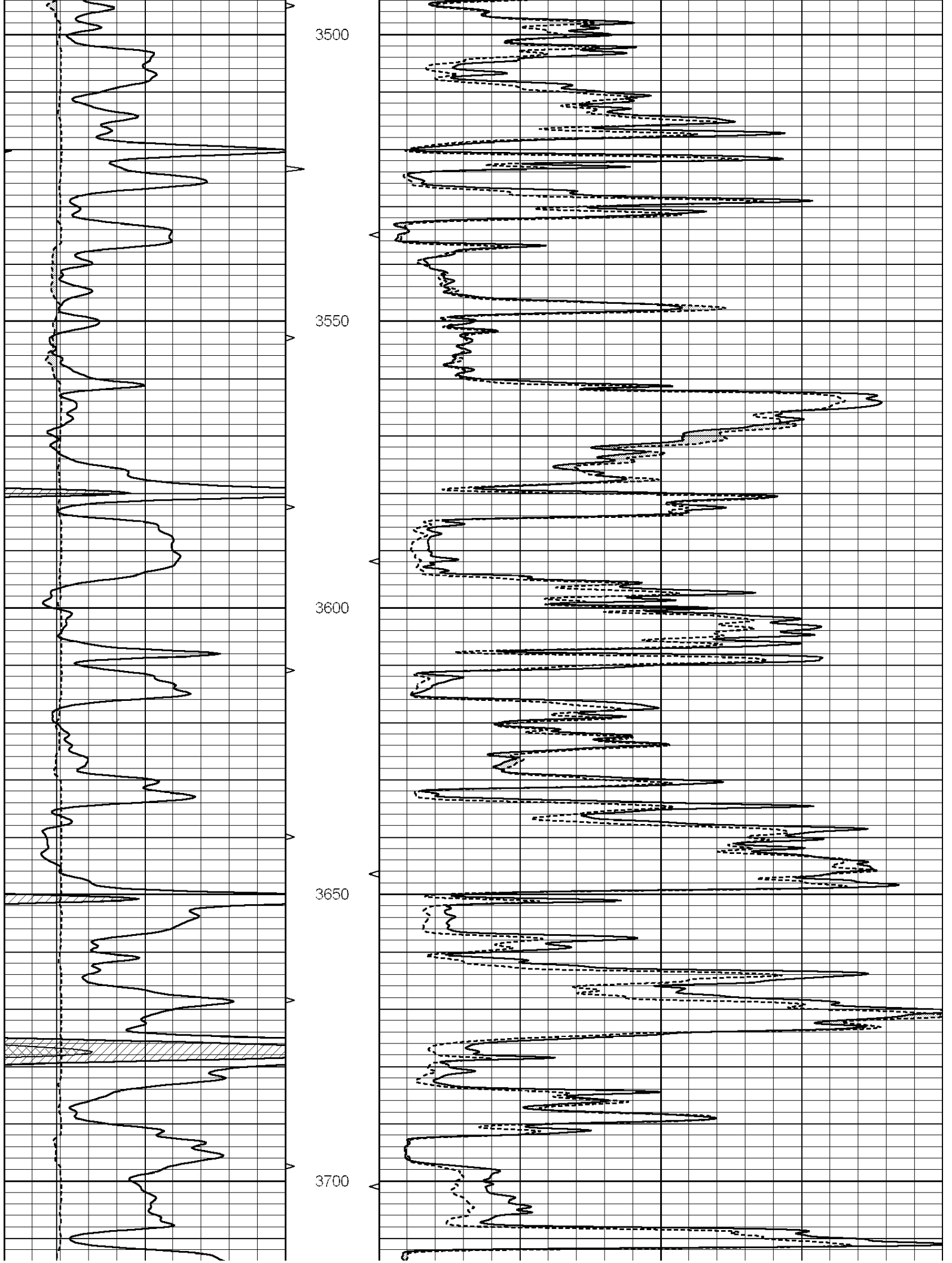
3300

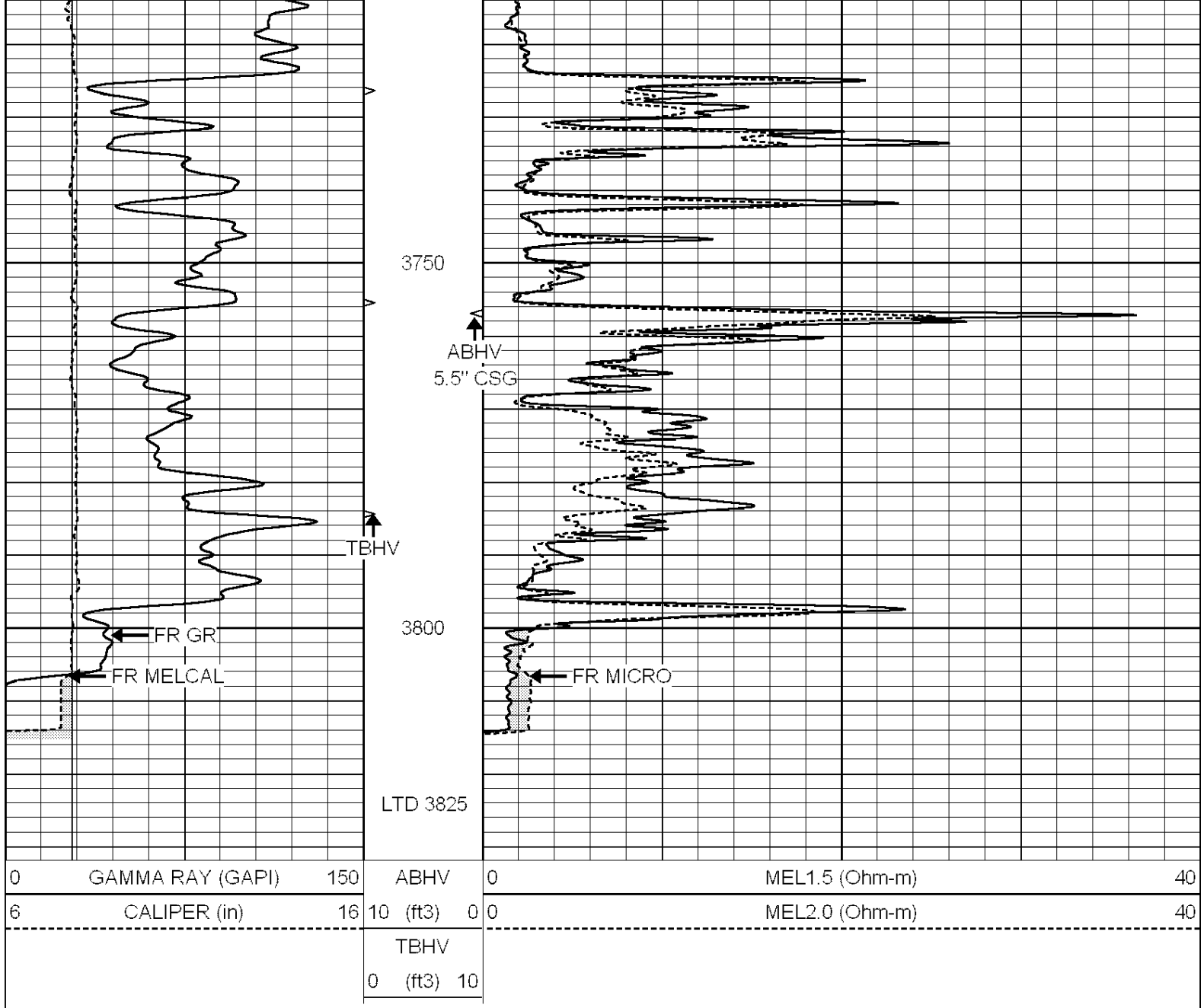
3350

3400

3450





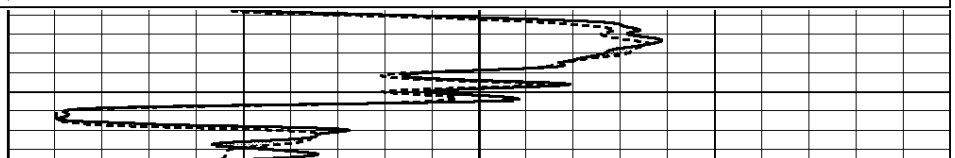
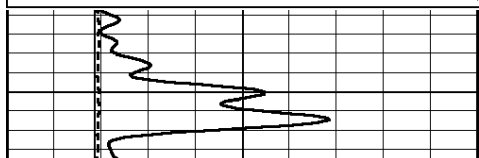


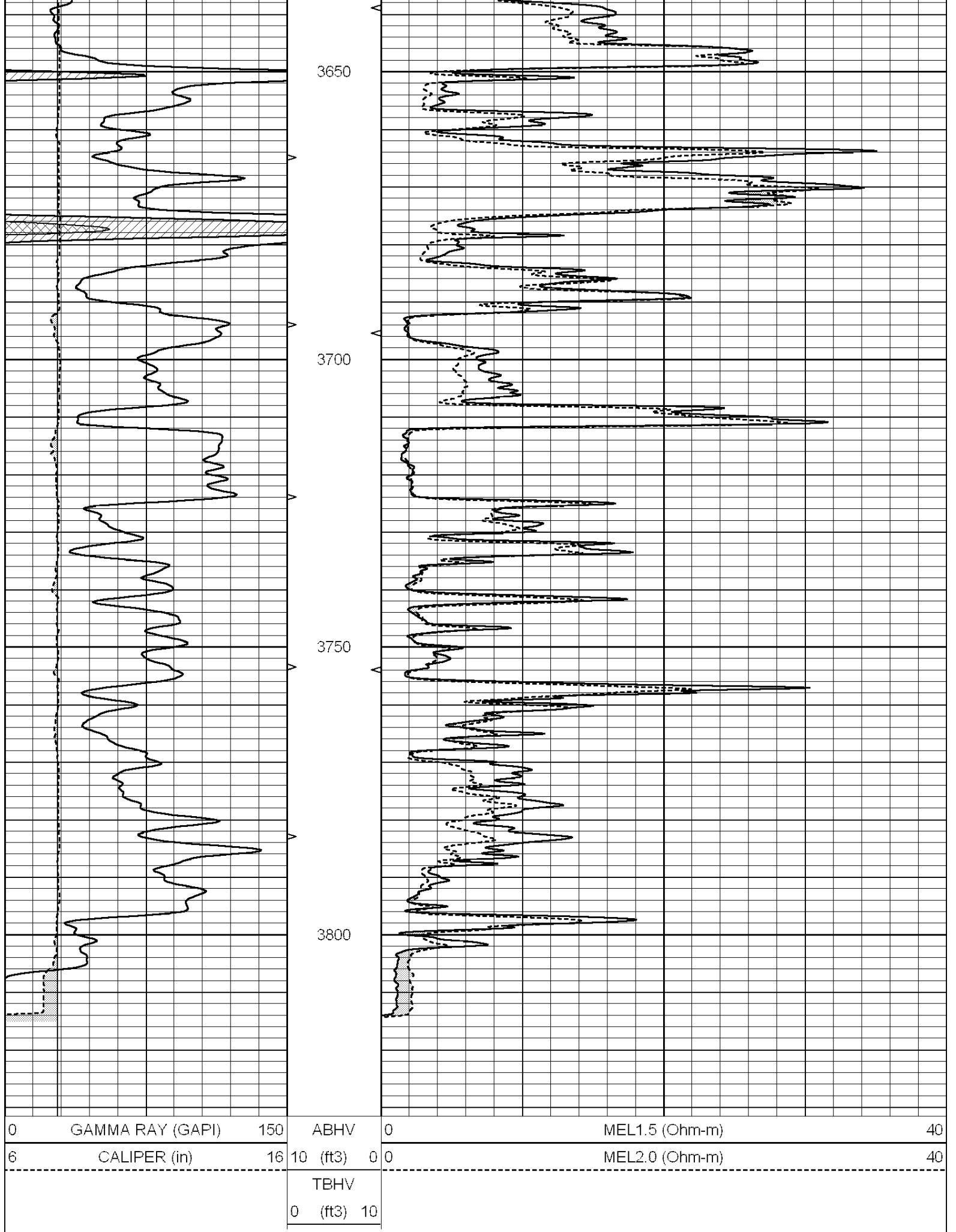
SUPERIOR
Hays,
Kansas

REPEAT SECTION

Database File: 009741ddn.db
 Dataset Pathname: pass5.1
 Presentation Format: _micro
 Dataset Creation: Mon Oct 01 09:34:13 2012 by Calc Open-Cased 090629
 Charted by: Depth in Feet scaled 1:240

0	GAMMA RAY (GAPI)	150	ABHV	0	MEL1.5 (Ohm-m)	40
6	CALIPER (in)	16	10 (ft3)	0	MEL2.0 (Ohm-m)	40
			TBHV			
			0 (ft3)	10		





Calibration Report

Database File: 009741ddn.db
 Dataset Pathname: pass6.1
 Dataset Creation: Mon Oct 01 09:35:34 2012 by Calc Open-Cased 090629

MICRO Calibration Report

Serial Number: MICRO3
 Tool Model: PROBE
 Performed: Thu Nov 17 03:06:31 2011

Caliper Calibration:	Gain=3.916	Offset=-9.271
	Low Cal	High Cal
References	8.000	14.000
Readings	4.257	5.789

1.5" Calibration:	Gain=200.000	Offset=-2.400
	Low Cal	High Cal
References	0.000	20.000
Readings	0.004	0.228

2" Calibration:	Gain=130.553	Offset=-1.220
	Low Cal	High Cal
References	0.000	20.000
Readings	0.005	0.175

Gamma Ray Calibration Report

Serial Number: #8
 Tool Model: OPEN
 Performed: Mon Jun 13 16:56:43 2011

Calibrator Value:	150.0	GAPI
Background Reading:	0.0	cps
Calibrator Reading:	175.0	cps
Sensitivity:	0.8371	GAPI/cps