



Weatherford[®]

**COMPACT PHOTO DENSITY
COMPENSATED NEUTRON
MICRORESISTIVITY LOG**

COMPANY SHAKESPEARE OIL COMPANY, INC.
WELL PETERSON #2-8
FIELD STRATFORD WEST
PROVINCE/COUNTY LOGAN
COUNTRY/STATE U.S.A. / KANSAS
LOCATION 850' FSL & 1750' FWL SW/4
SE NW SE SW

| | | | |
|---|--------------|---------------|----------------|
| SEC | TWP | RGE | Other Services |
| 8 | 13S | 32W | MA/IMFE |
| API Number | 15-109-21095 | | |
| Permit Number | | | |
| Permanent Datum G.L., Elevation 2971 feet | | | |
| Log Measured From KB | | | |
| Drilling Measured From K.B. @ 10 FEET | | | |
| Date | 23-SEP-2012 | | |
| Run Number | ONE | | |
| Depth Driller | 4680.00 feet | | |
| Depth Logger | 4685.00 feet | | |
| First Reading | 4666.00 feet | | |
| Last Reading | 3800.00 feet | | |
| Casing Driller | 226.00 feet | | |
| Casing Logger | 222.00 feet | | |
| Bit Size | 7.875 inches | | |
| Hole Fluid Type | CHEMICAL | | |
| Density / Viscosity | 9.20 lb/USg | 48.00 CP | |
| PH / Fluid Loss | 11.00 | 6.40 ml/30Min | |
| Sample Source | FLOWLINE | | |
| Rm @ Measured Temp | 1.14 @ 93.0 | ohm-m | |
| Rmf @ Measured Temp | 0.91 @ 93.0 | ohm-m | |
| Rmc @ Measured Temp | 1.37 @ 93.0 | ohm-m | |
| Source Rmf / Rmc | CALC | CALC | |
| Rm @ BHT | 0.92 @ 115.0 | ohm-m | |
| Time Since Circulation | 3 HOURS | | |
| Max Recorded Temp | 115.00 | deg F | |
| Equipment Name | COMPACT | | |
| Equipment / Base | 13057 | LIB | |
| Recorded By | R. HOFFMAN | | |
| Witnessed By | STEVE DAVIS | | |
| S.O. / JOB# | 3538923 | | LB12-255 |

| | |
|-------------|---------|
| Elevations: | feet |
| KB | 2981.00 |
| DF | 2979.00 |
| GL | 2971.00 |

BOREHOLE RECORD

Last Edited: 23-SEP-2012 07:26

| | | |
|--------------------|--------------------|------------------|
| Bit Size inches | Depth From feet | Depth To feet |
| 7.875 | 222.00 | 4685.00 |

CASING RECORD

| | | | | |
|---------|----------------|--------------------|--------------------|---------------------|
| Type | Size inches | Depth From feet | Shoe Depth feet | Weight pounds/ft |
| SURFACE | 8.625 | 0.00 | 222.00 | 24.00 |

REMARKS

Tools Ran: MCG, MML, MDN, MPD, MFE, MAI.
 Hardware Used: MDN Dual Eccentralizer used. MPD 8 inch profile plate used. MFE, and MAI 0.5 inch standoffs used.
 2.71 g/cc Limestone Density Matrix used to calculate porosity.
 All intervals logged and scaled per customer's request.
 Tight pulls, washouts and borehole rugosity will affect data quality.
 Annular volume with 5.5 inch production casing= 162 cu. ft.
 Total hole volume from TD to Surface casing= 1838 cu. ft.
 Service order: #3538923
 Rig: Val #7
 Engineer: R. Hoffman
 Operator(s): K. Rinehart

All interpretations are opinions based on inferences from electrical or other measurements and we cannot, and do not, guarantee the accuracy or correctness of any interpretations, and we shall not, except in the case of gross or wilful negligence on our part, be liable or responsible for any loss, costs, damages or expenses incurred or sustained by anyone resulting from any interpretation made by any of our officers, agents or employees. These interpretations are also subject to our general terms and conditions in our price schedule.

5 INCH MAIN

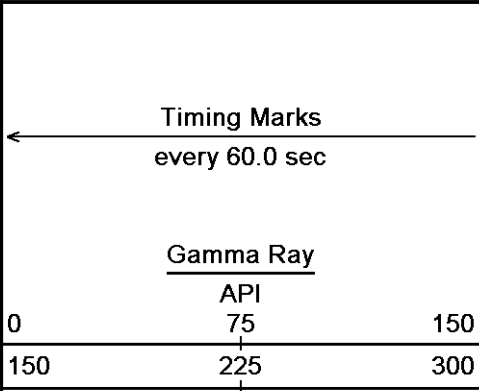
Depth Based Data - Maximum Sampling Increment 10.0cm

Plotted on 23-SEP-2012 08:17

Filename: C:\Minimus 13.02.6600\Data\Shakespeare Peterson #...\Shakespeare Peterson #2-8 Main.dta

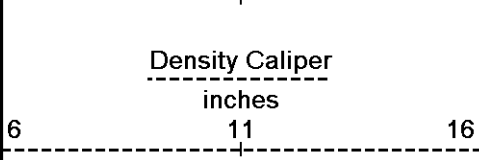
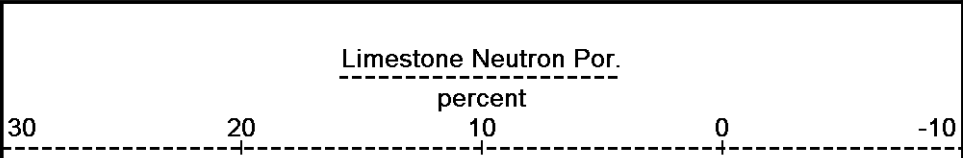
Recorded on 23-SEP-2012 06:12

System Versions: Logged with 13.02.6600 Plotted with 13.02.6600

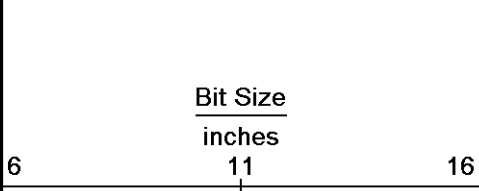
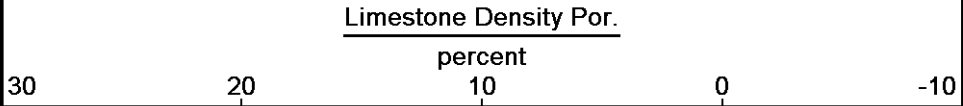


Depth in Feet

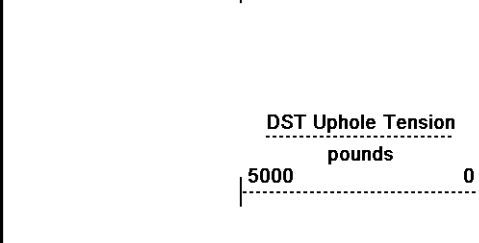
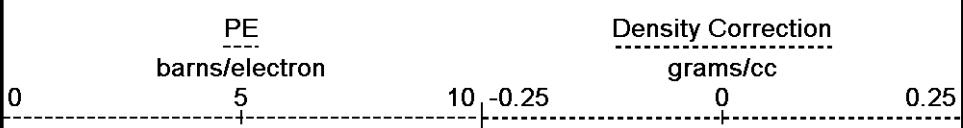
Borehole Temp in deg F



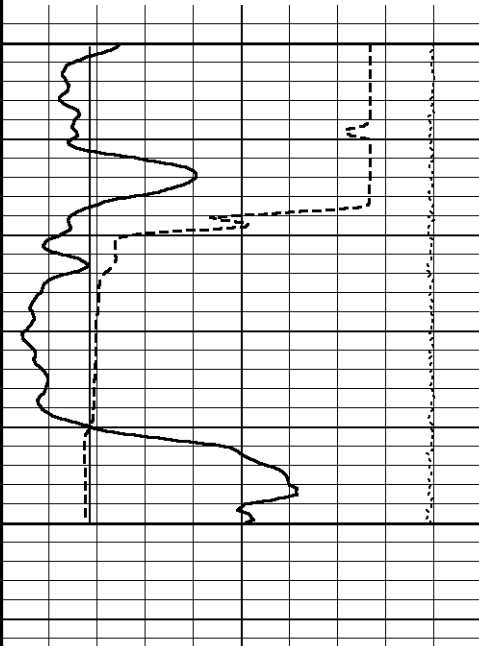
HVI every 10 cu ft



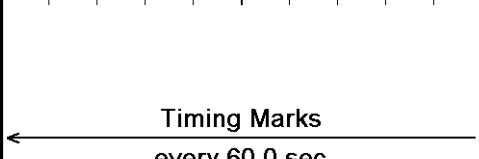
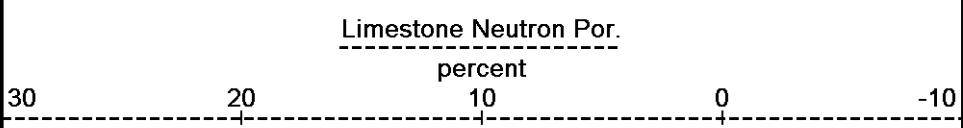
Annular Integral every 10 cu ft



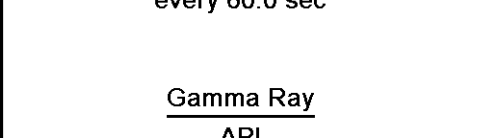
Replay Scale 1:240



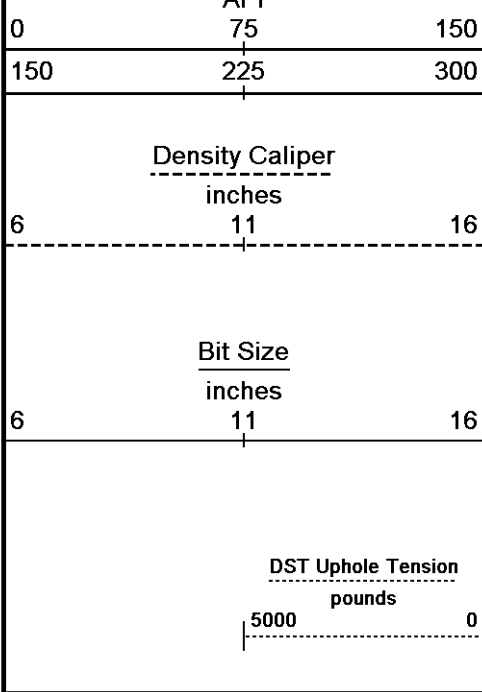
Depth in Feet



Depth in Feet



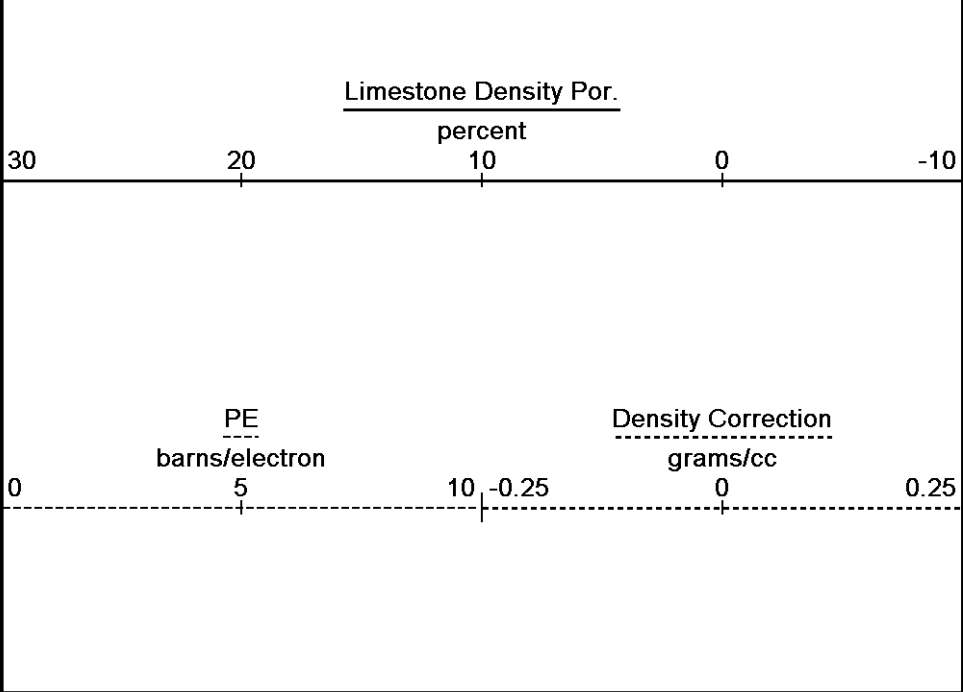
Borehole Temp in



HVI every 10 cu ft

Annular Integral every 10 cu ft

Replay Scale 1:240



Depth Based Data - Maximum Sampling Increment 10.0cm Plotted on 23-SEP-2012 08:17

Filename: C:\Minimus 13.02.6600\Data\Shakespeare Peterson #...\Shakespeare Peterson #2-8 Main.dta Recorded on 23-SEP-2012 06:12

System Versions: Logged with 13.02.6600 Plotted with 13.02.6600

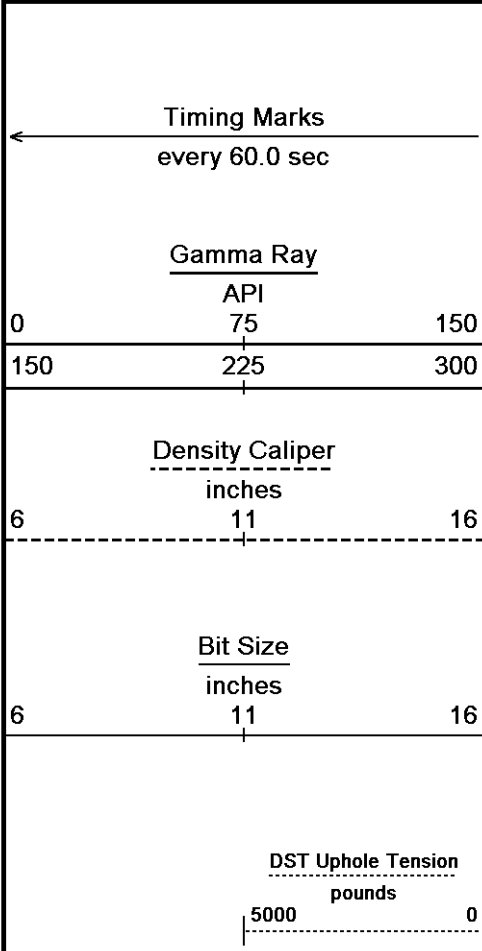
5 INCH MAIN

5 INCH MAIN

Depth Based Data - Maximum Sampling Increment 10.0cm Plotted on 23-SEP-2012 08:17

Filename: C:\Minimus 13.02.6600\Data\Shakespeare Peterson #...\Shakespeare Peterson #2-8 Main.dta Recorded on 23-SEP-2012 06:12

System Versions: Logged with 13.02.6600 Plotted with 13.02.6600



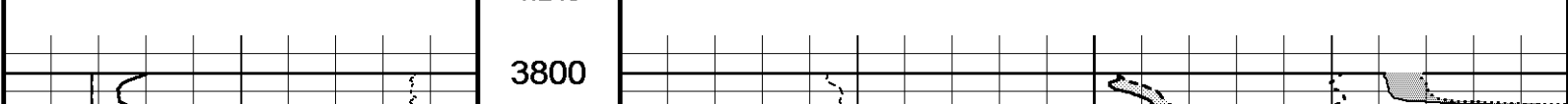
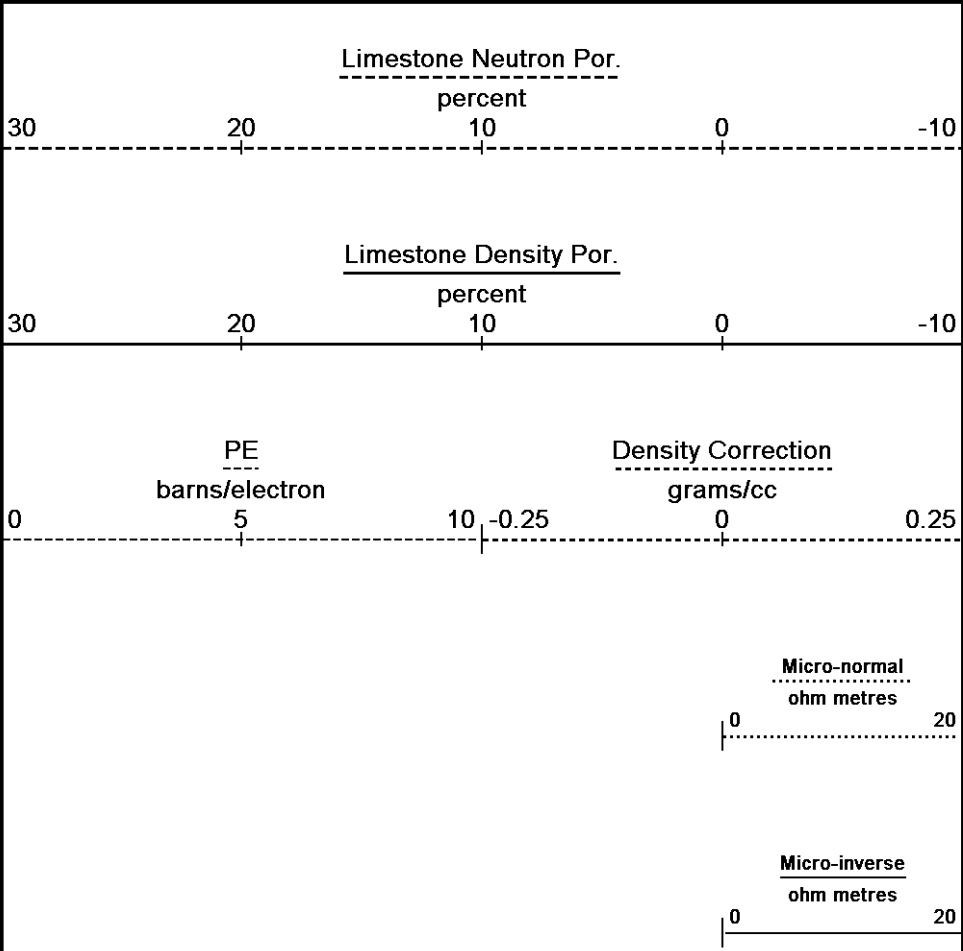
Depth in Feet

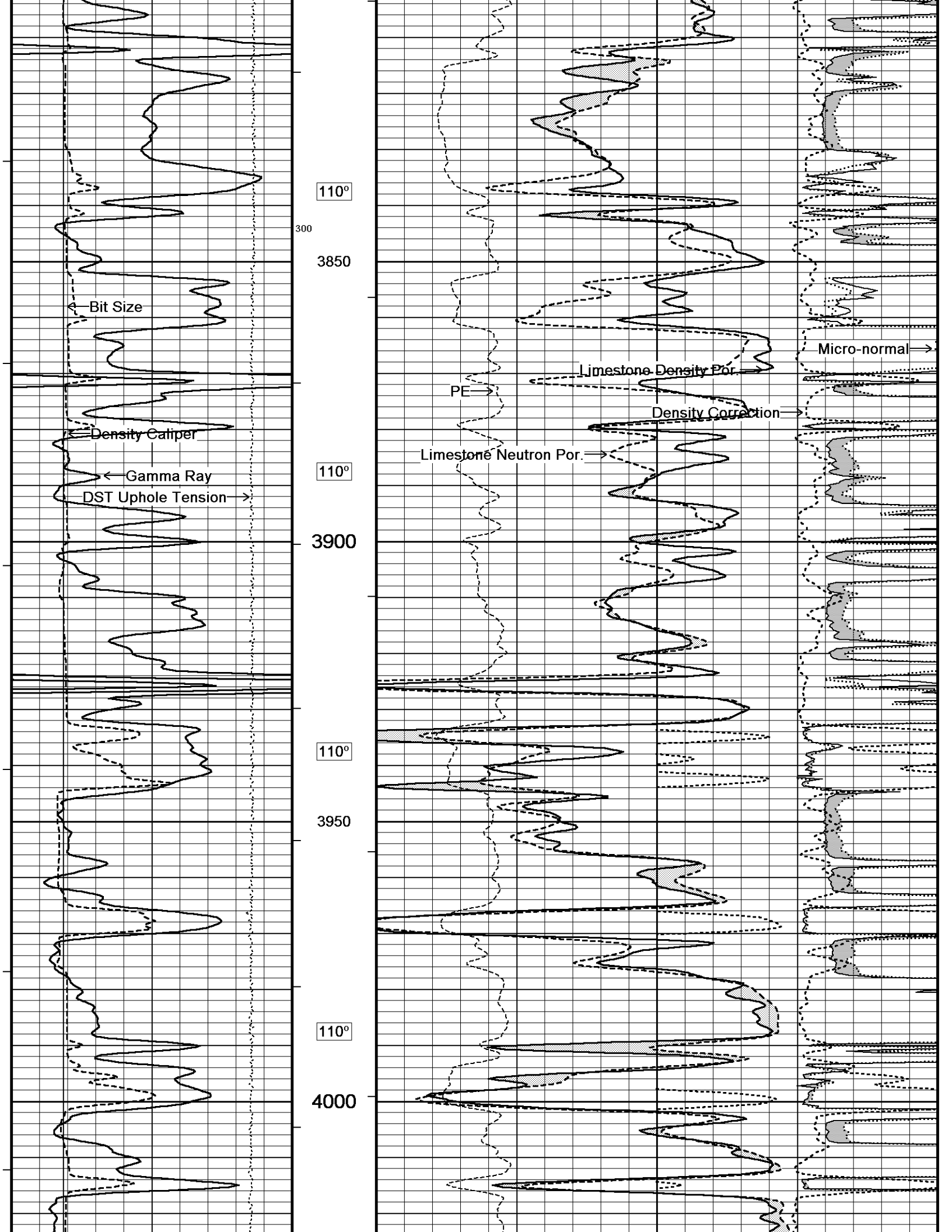
Borehole Temp in deg F

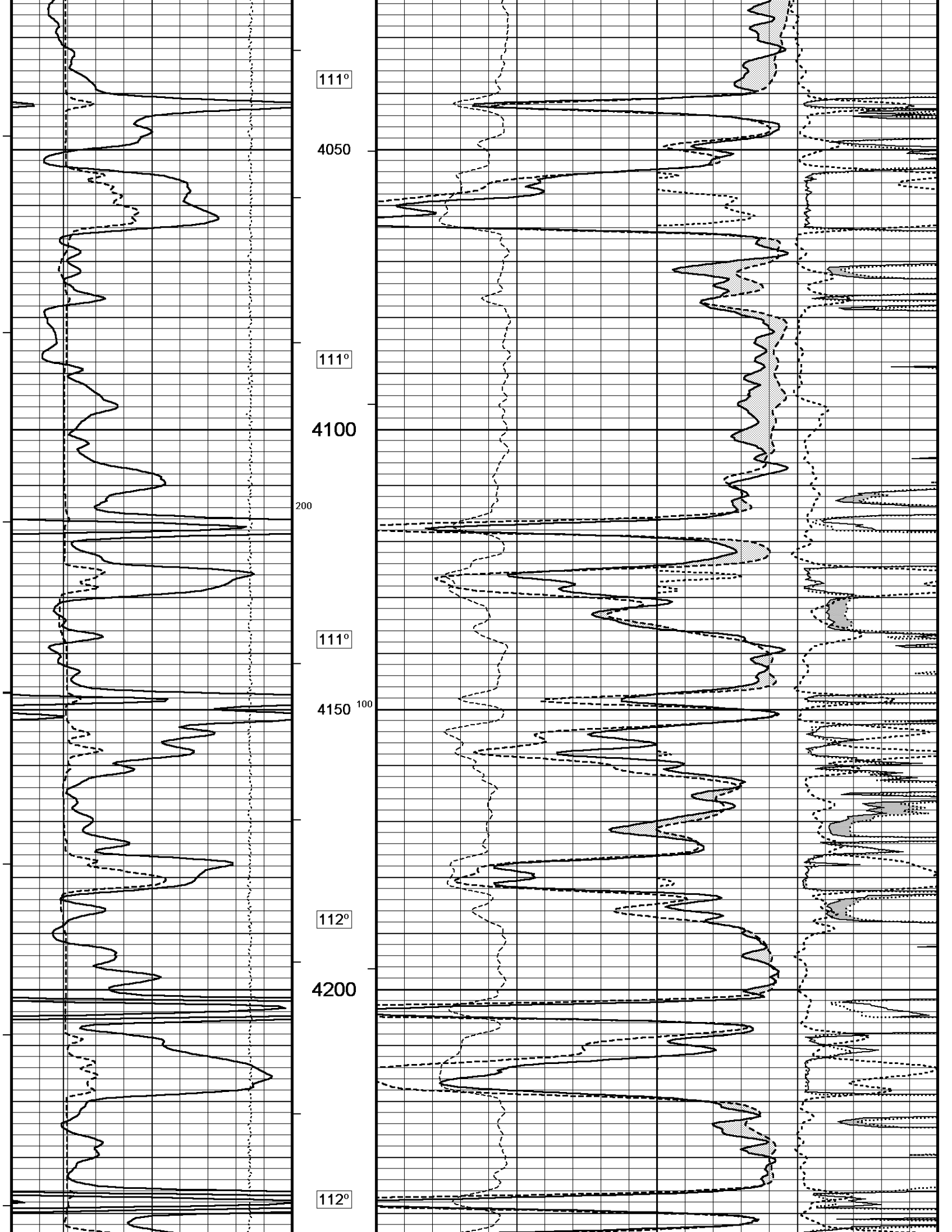
HVI every 10 cu ft

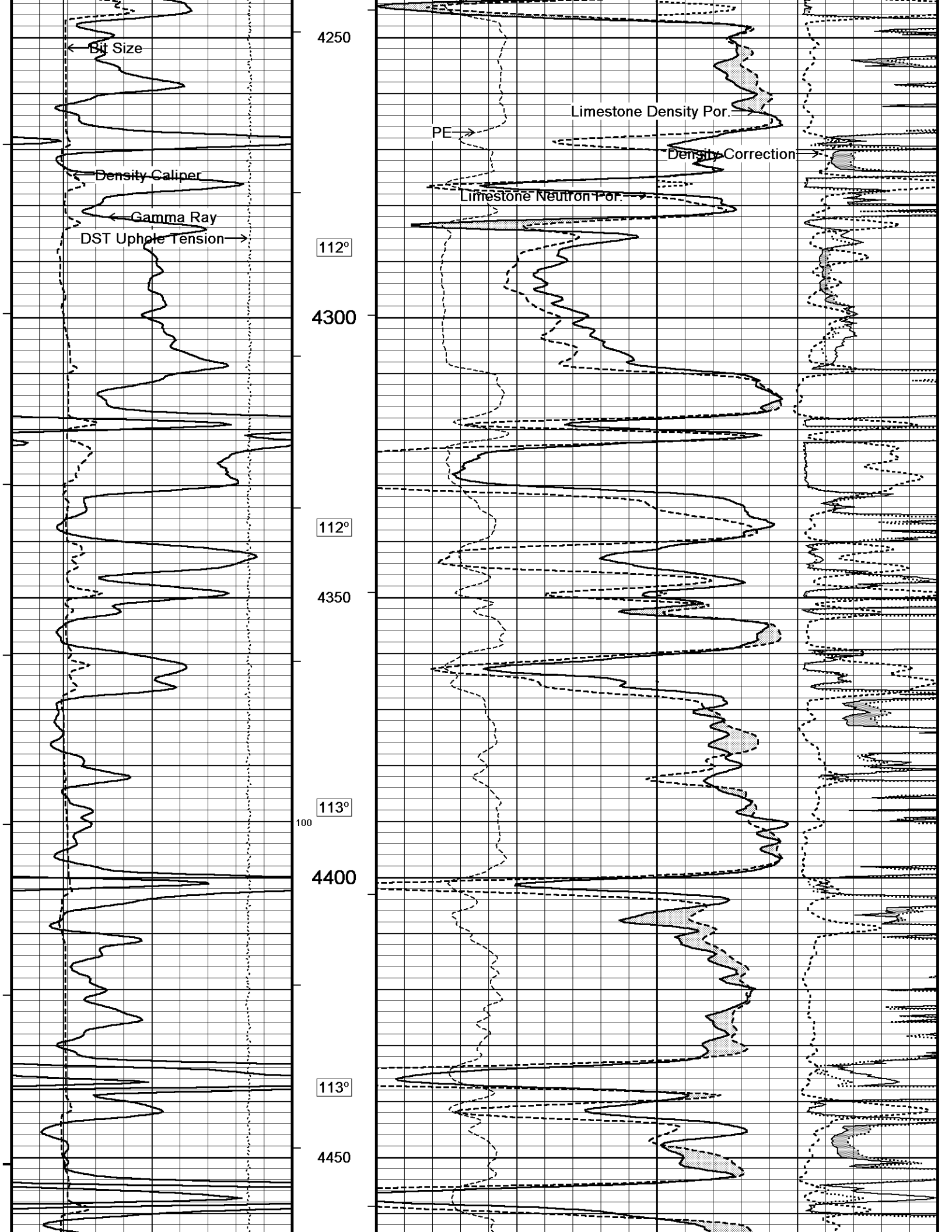
Annular Integral every 10 cu ft

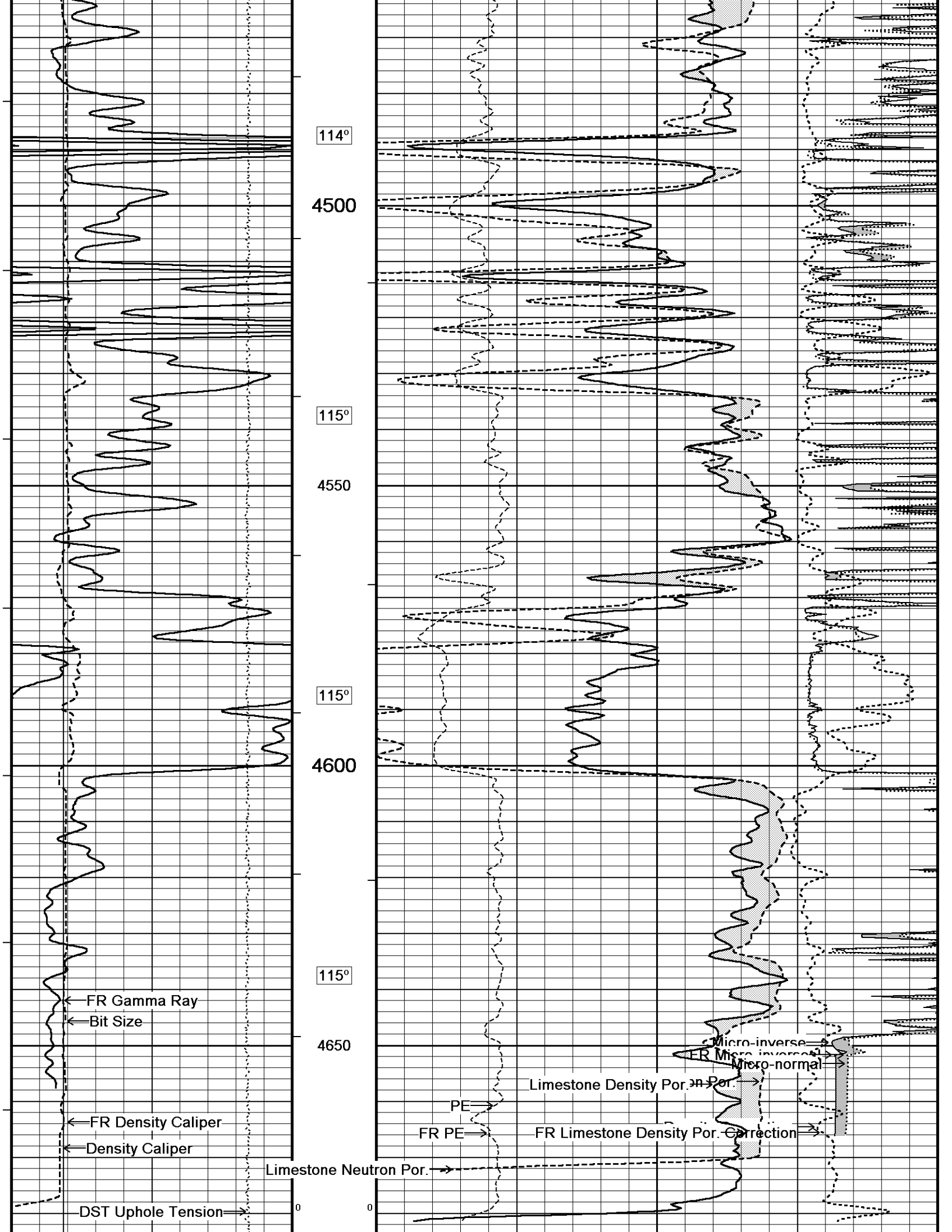
Replay Scale 1:240











FR DST Uphole Tension

4700

4716
Depth
in
Feet

Timing Marks
every 60.0 sec

Gamma Ray
API

0 75 150
150 225 300

Borehole
Temp in
deg F

HVI
every
10 cu ft

Density Caliper
inches

6 11 16

Bit Size
inches

6 11 16

DST Uphole Tension
pounds

5000 0

Replay
Scale
1:240

Limestone Neutron Por.
percent

30 20 10 0 -10

Limestone Density Por.
percent

30 20 10 0 -10

PE
barns/electron

0 5 10 -0.25

Density Correction
grams/cc

0 0.25

Micro-normal
ohm metres

0 20

Micro-inverse
ohm metres

0 20

Depth Based Data - Maximum Sampling Increment 10.0cm Plotted on 23-SEP-2012 08:17
 Filename: C:\Minimus 13.02.6600\Data\Shakespeare Peterson #...\Shakespeare Peterson #2-8 Main.dta Recorded on 23-SEP-2012 06:12
 System Versions: Logged with 13.02.6600 Plotted with 13.02.6600

5 INCH MAIN

REPEAT SECTION

Depth Based Data - Maximum Sampling Increment 10.0cm Plotted on 23-SEP-2012 08:17
 Filename: C:\Minimus 13.02.6600\Data\Shakespeare Peterso...\Shakespeare Peterson #2-8 Repeat.dta Recorded on 23-SEP-2012 05:52
 System Versions: Logged with 13.02.6600 Plotted with 13.02.6600

Depth
in
Feet

Timing Marks
every 60.0 sec

Gamma Ray
API

0 75 150
150 225 300

Borehole
Temp in
deg F

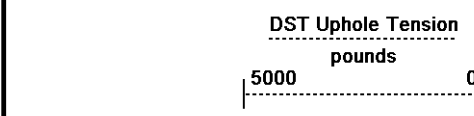
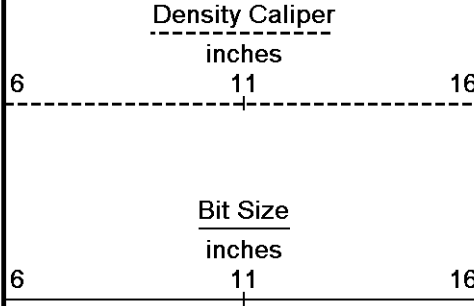
HVI

Limestone Neutron Por.
percent

30 20 10 0 -10

Limestone Density Por.
percent

30 20 10 0 -10



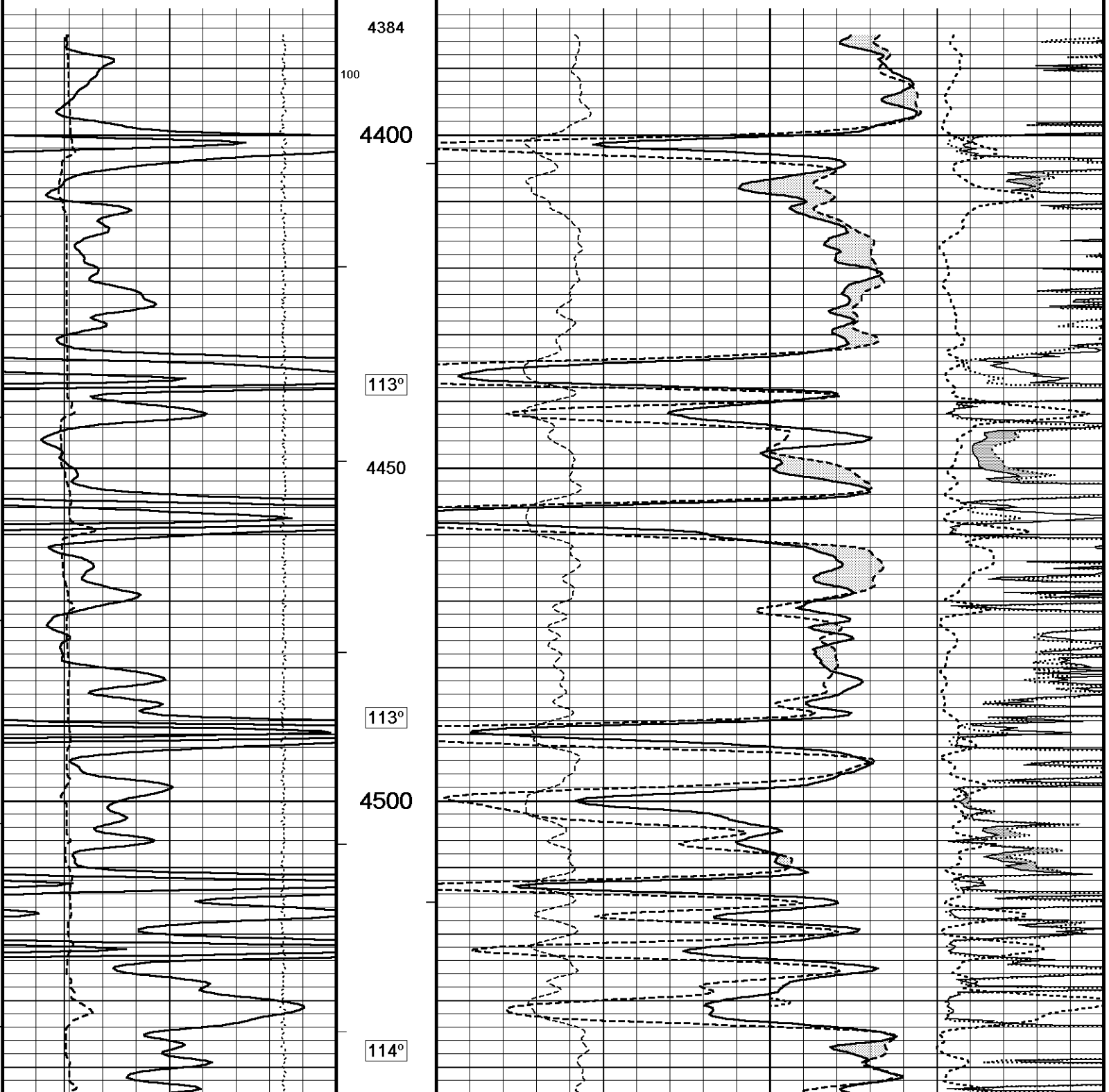
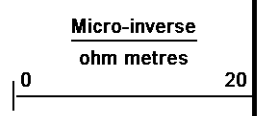
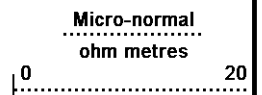
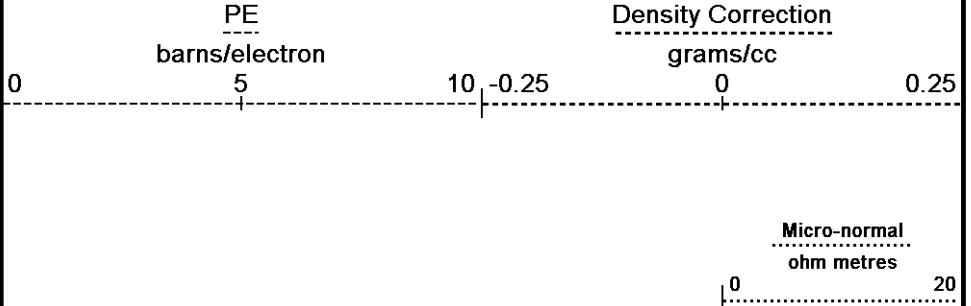
every
10 cu ft

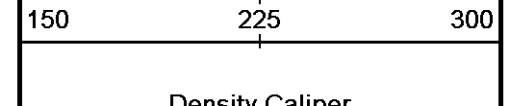
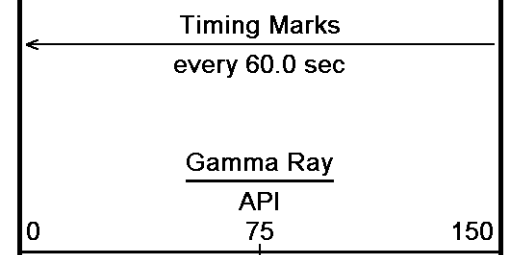
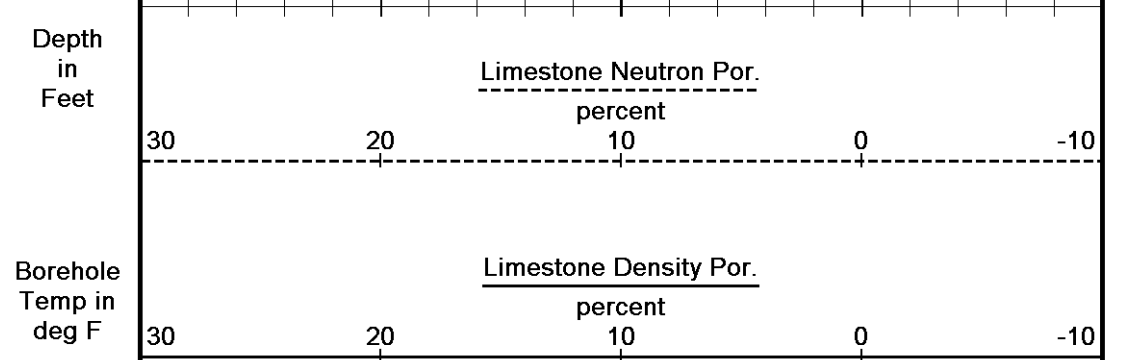
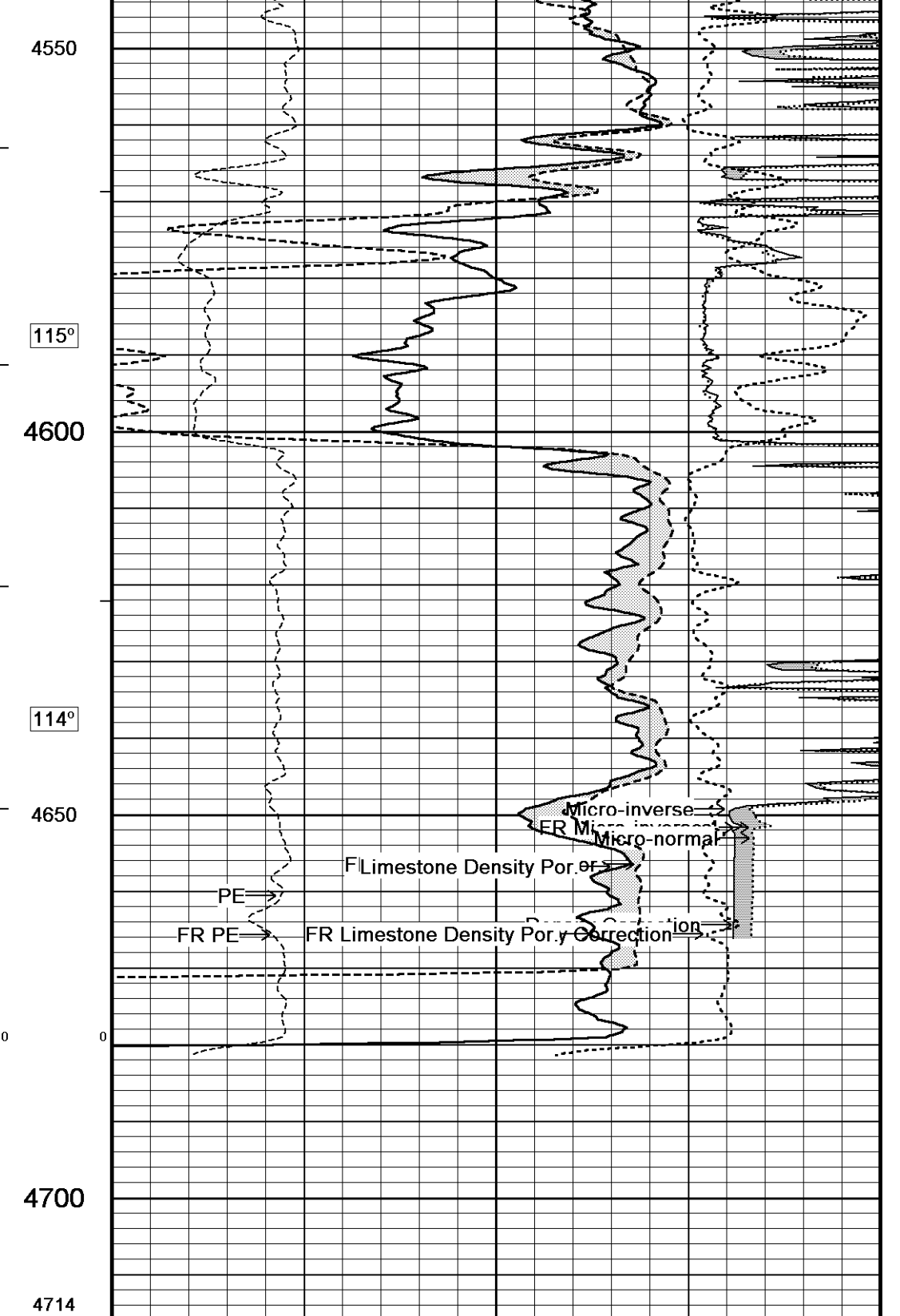
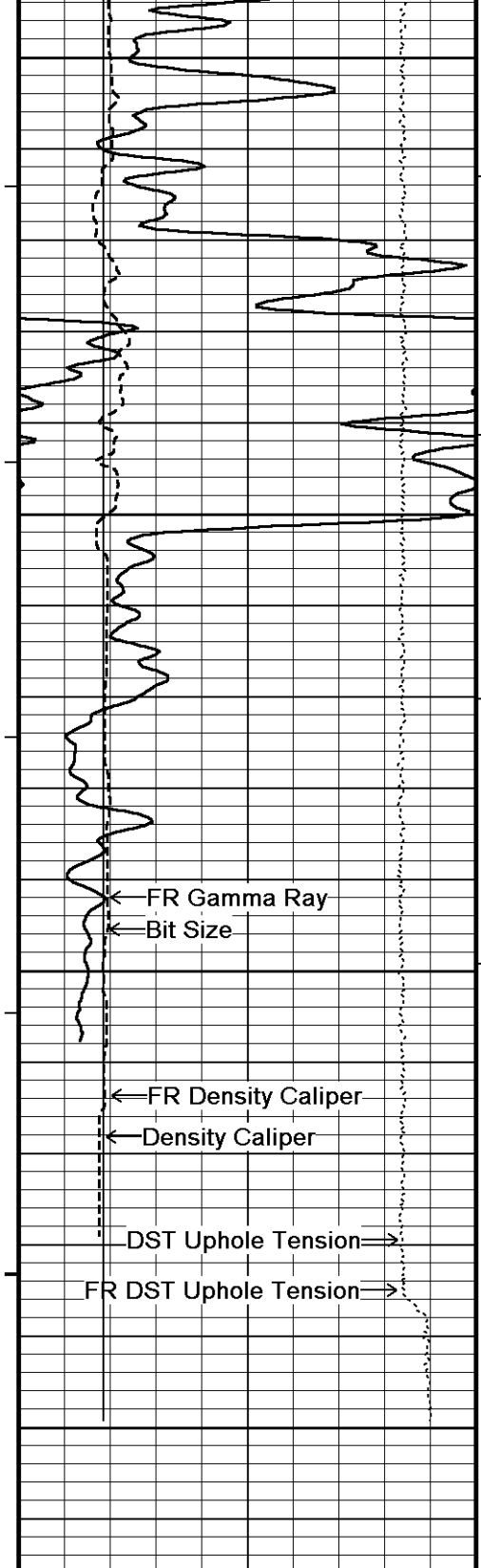
←

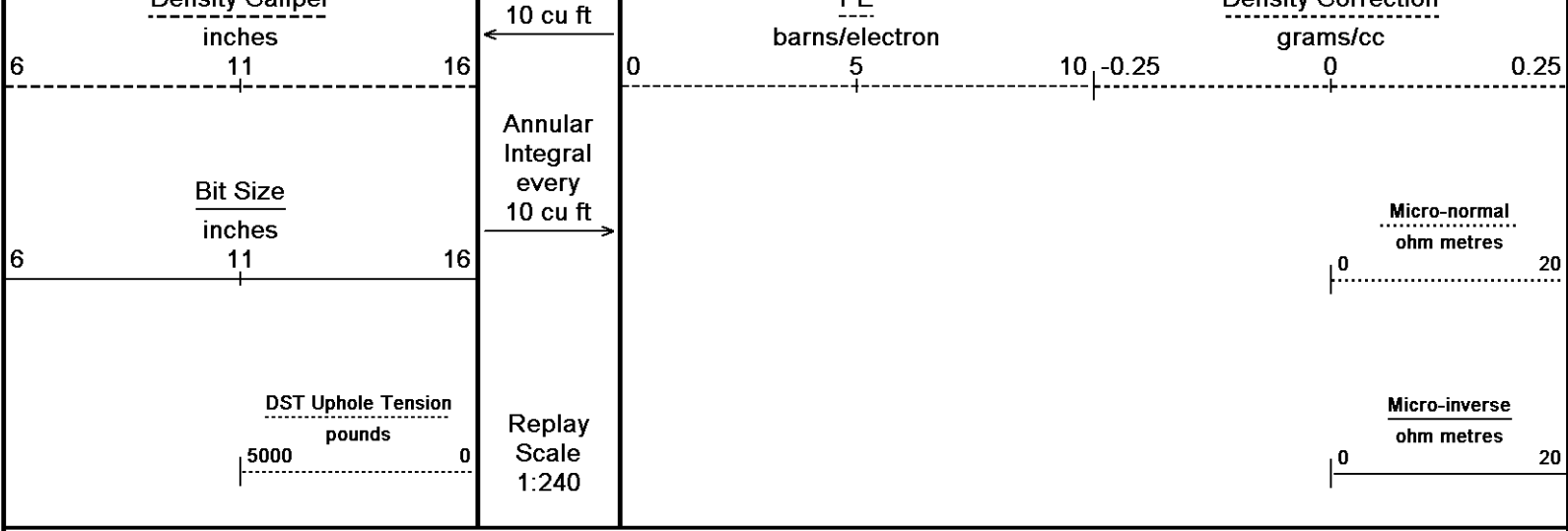
Annular
Integral
every
10 cu ft

→

Replay
Scale
1:240





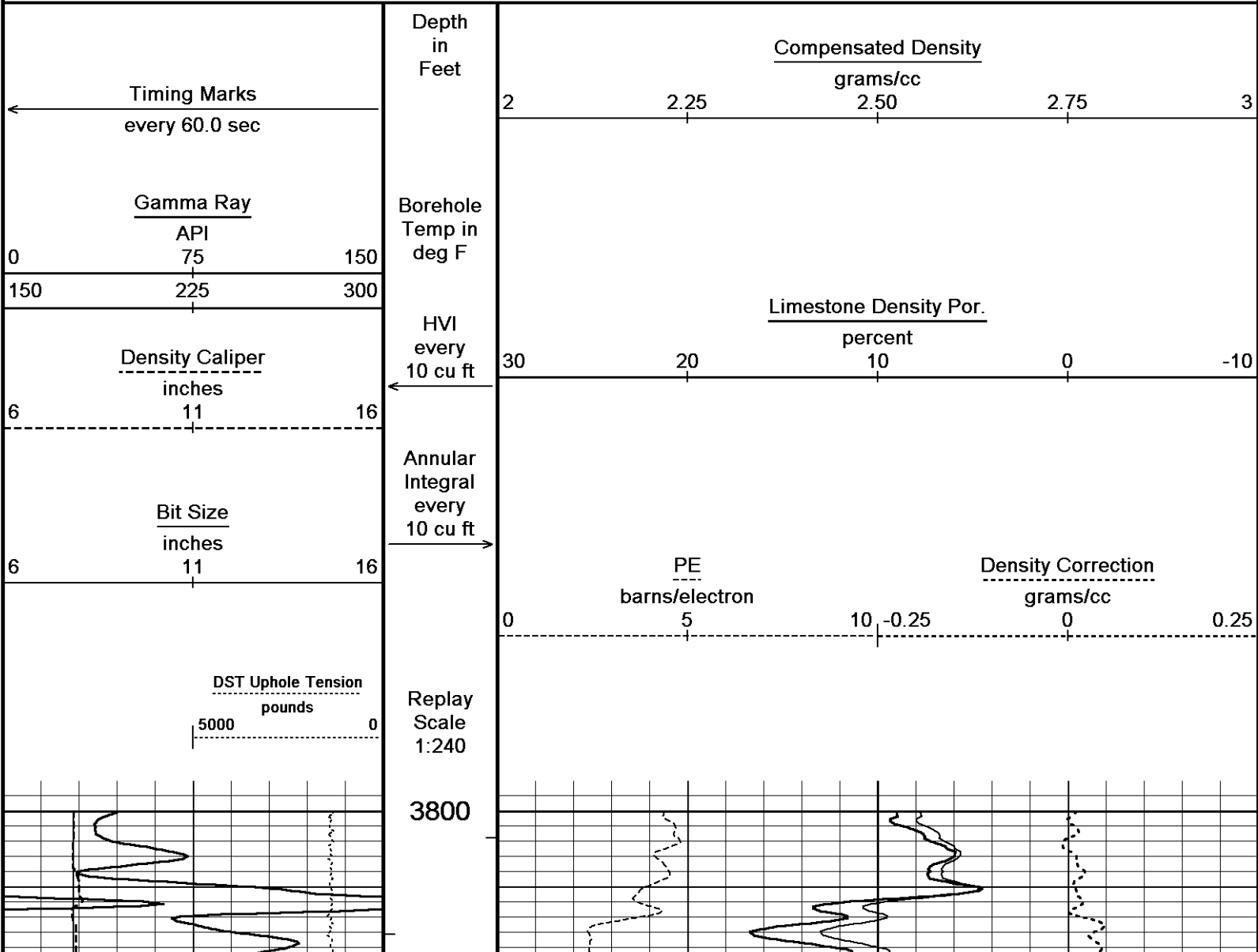


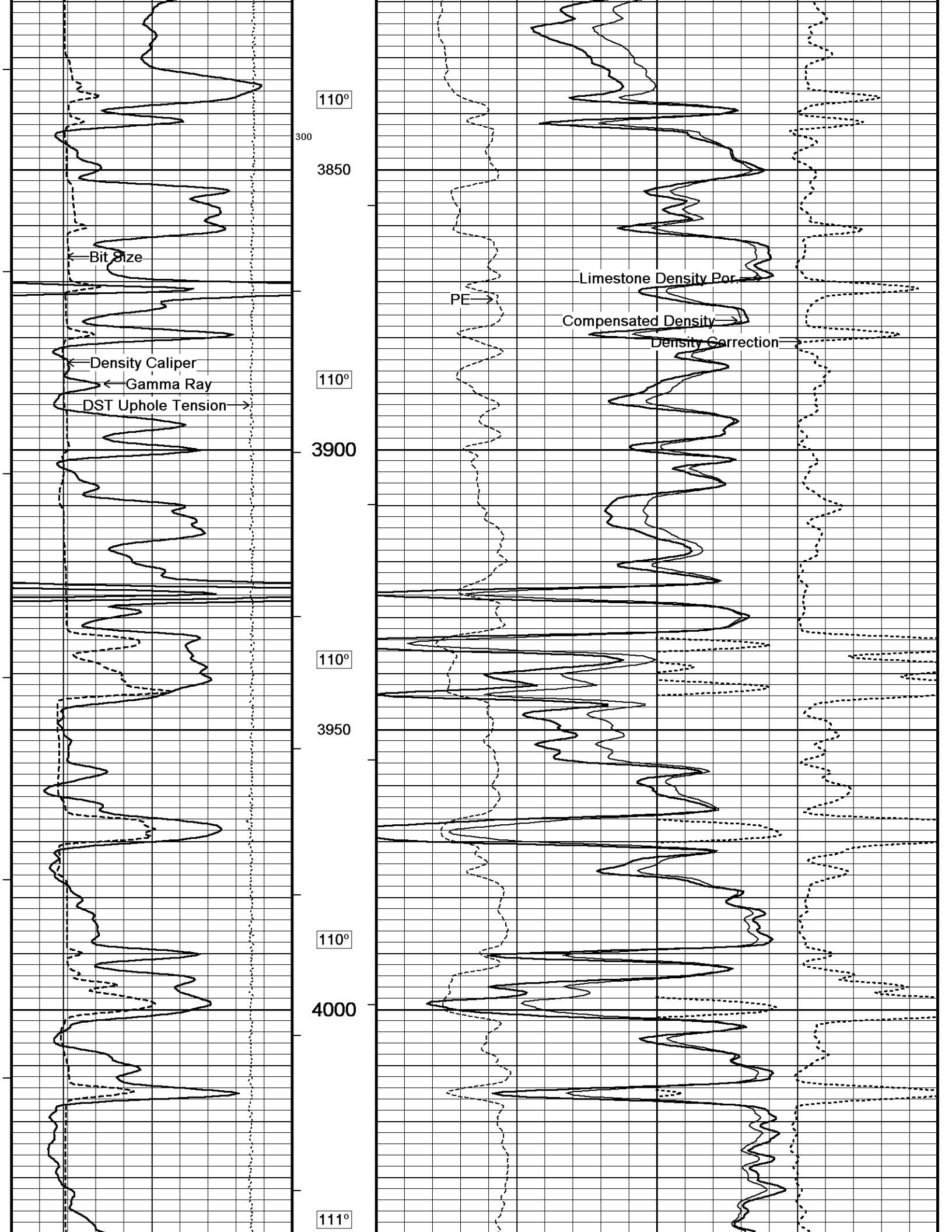
Depth Based Data - Maximum Sampling Increment 10.0cm
 Plotted on 23-SEP-2012 08:17
 Filename: C:\Minimus 13.02.6600\Data\Shakespeare Peterson...\Shakespeare Peterson #2-8 Repeat.dta
 Recorded on 23-SEP-2012 05:52
 System Versions: Logged with 13.02.6600 Plotted with 13.02.6600

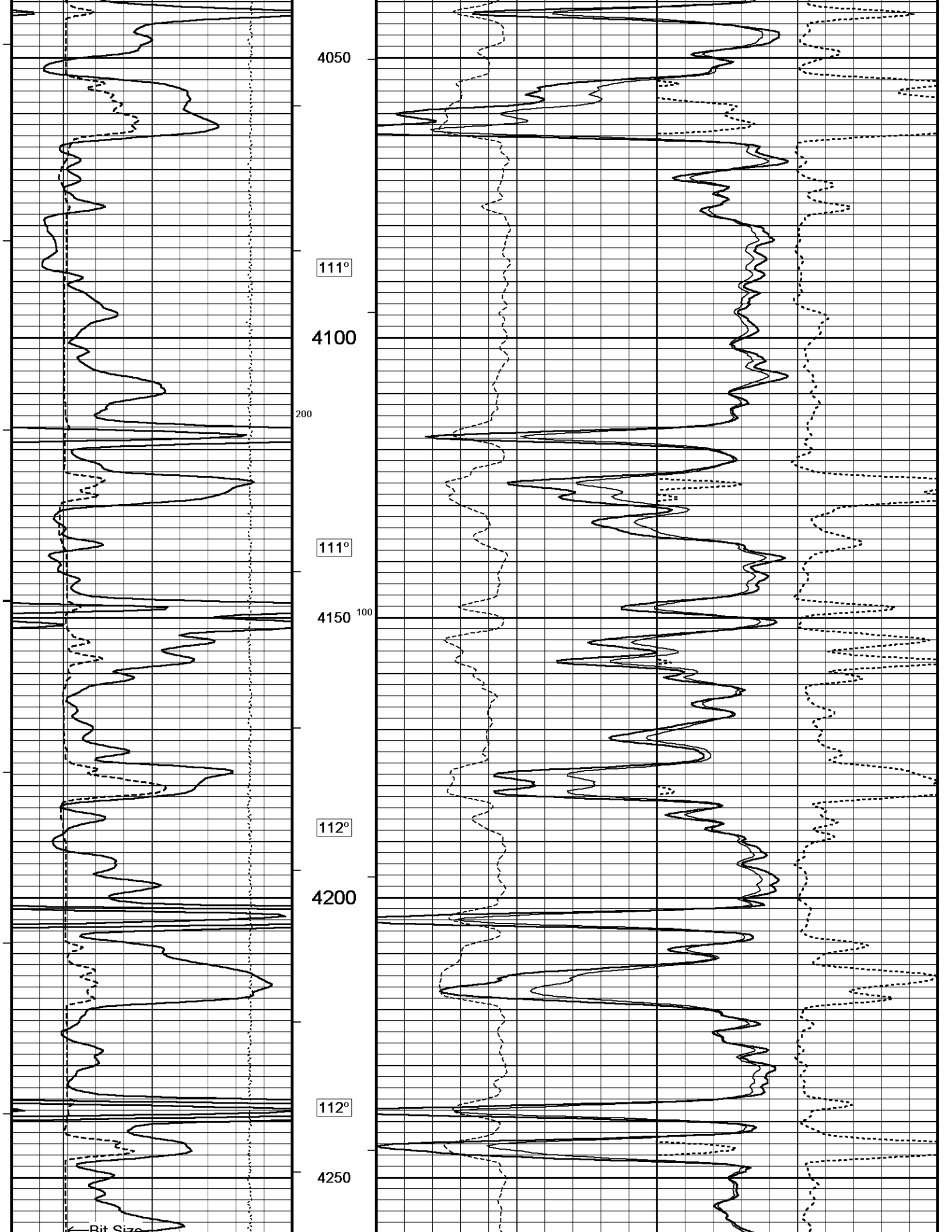
↑ REPEAT SECTION ↑

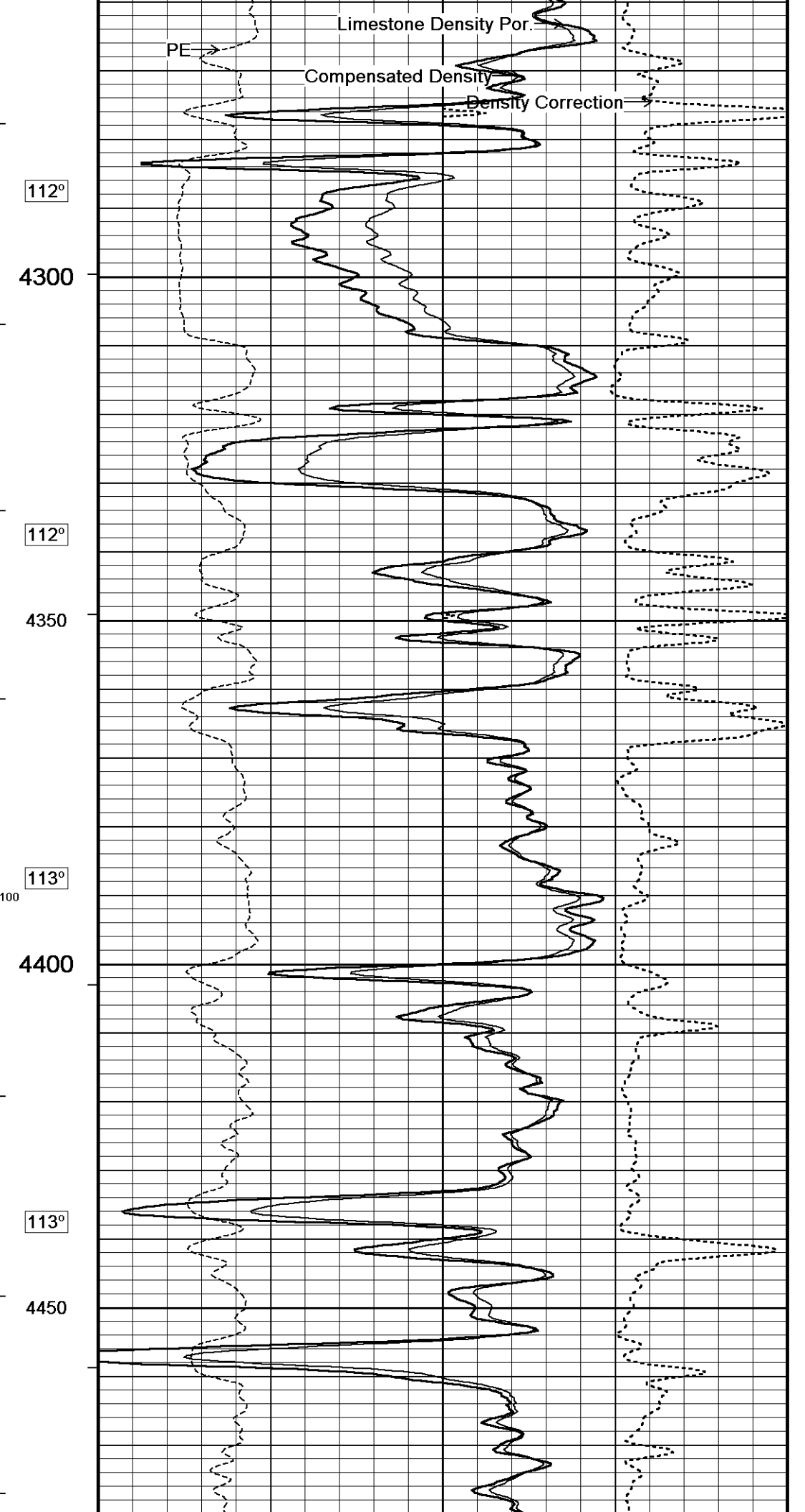
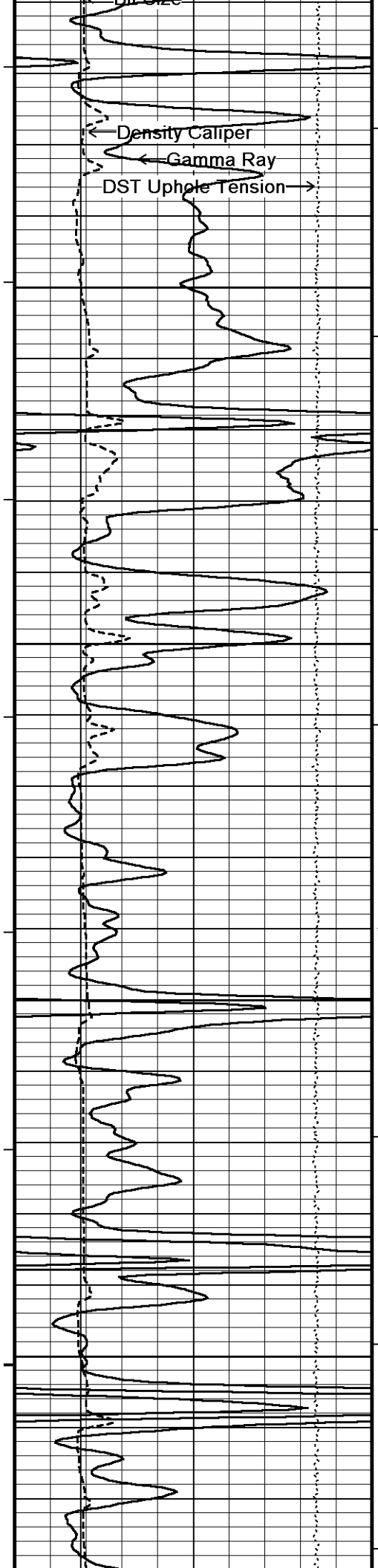
↓ 5 INCH MAIN ↓

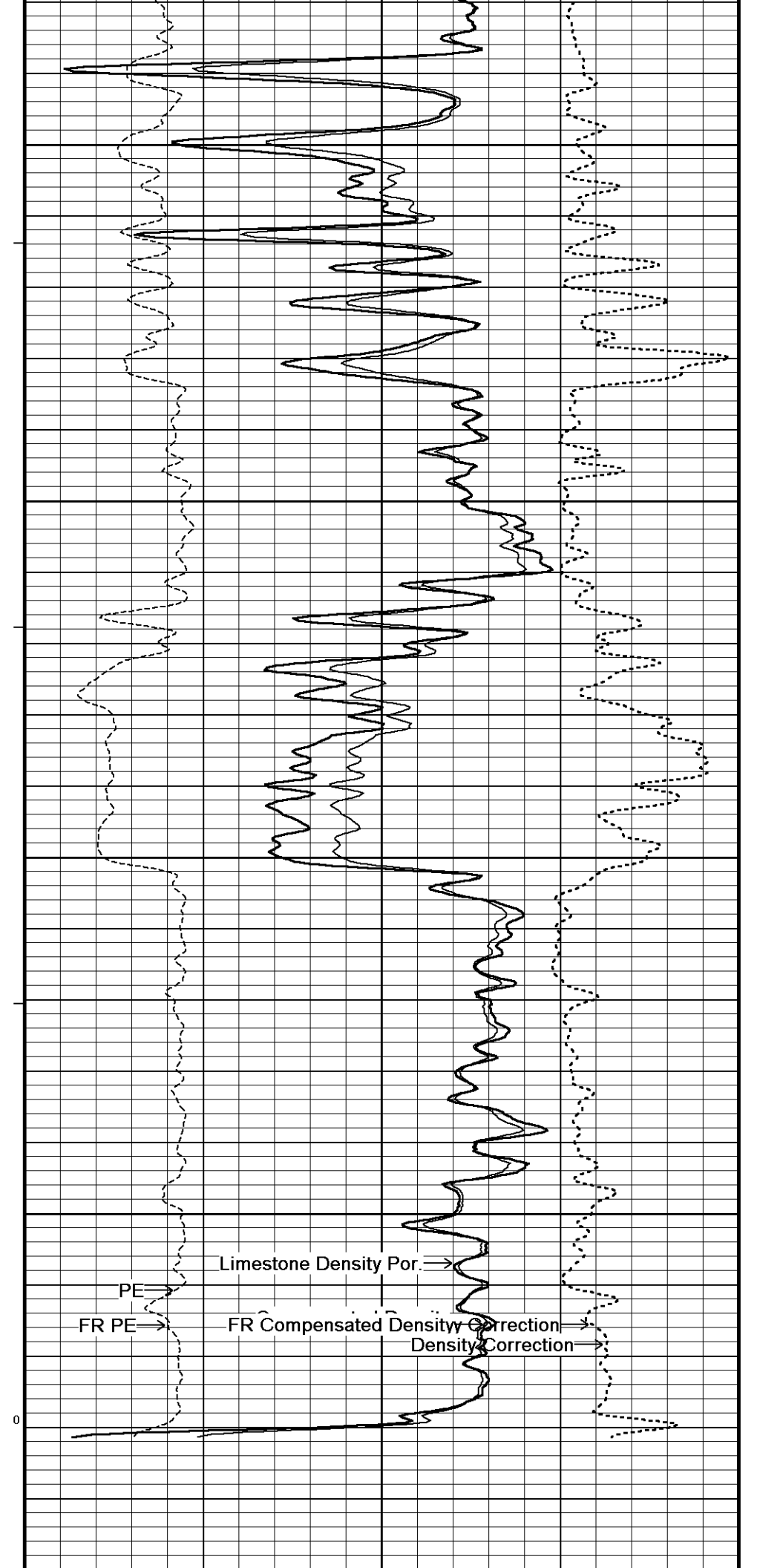
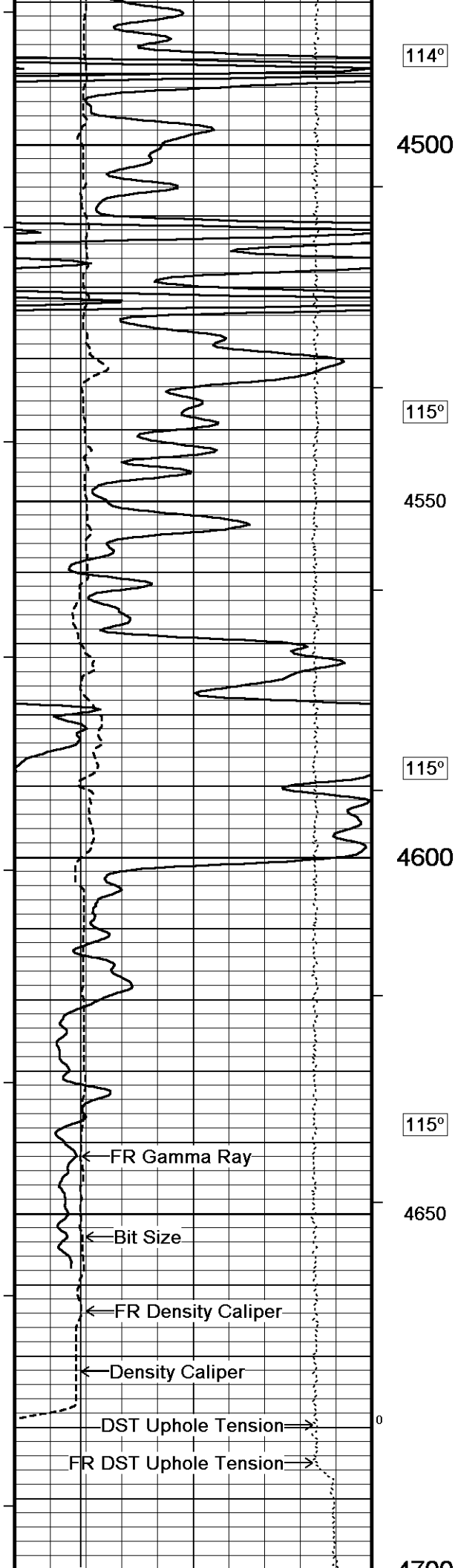
Depth Based Data - Maximum Sampling Increment 10.0cm
 Plotted on 23-SEP-2012 08:17
 Filename: C:\Minimus 13.02.6600\Data\Shakespeare Peterson #2-8 Main.dta
 Recorded on 23-SEP-2012 06:12
 System Versions: Logged with 13.02.6600 Plotted with 13.02.6600

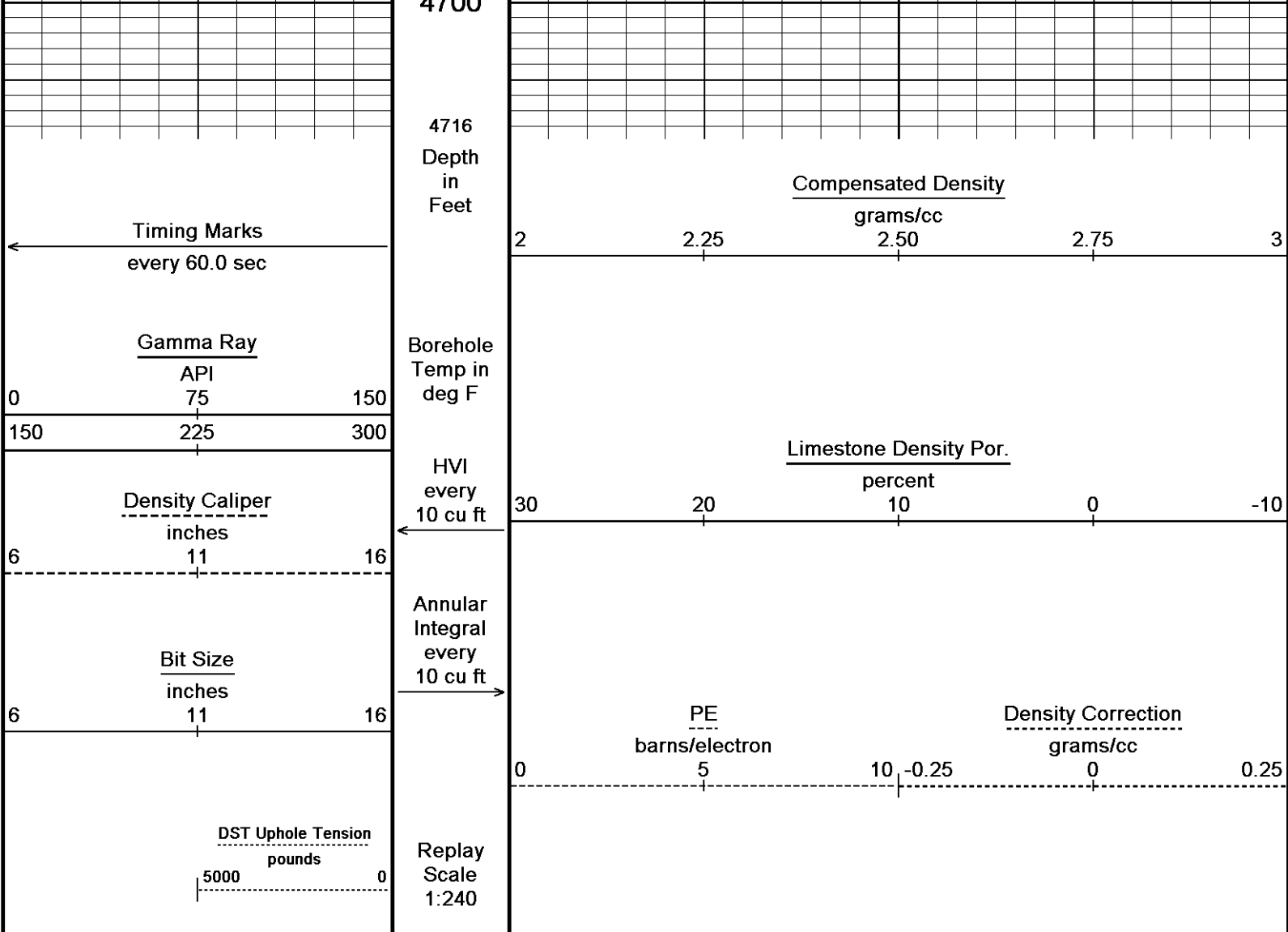










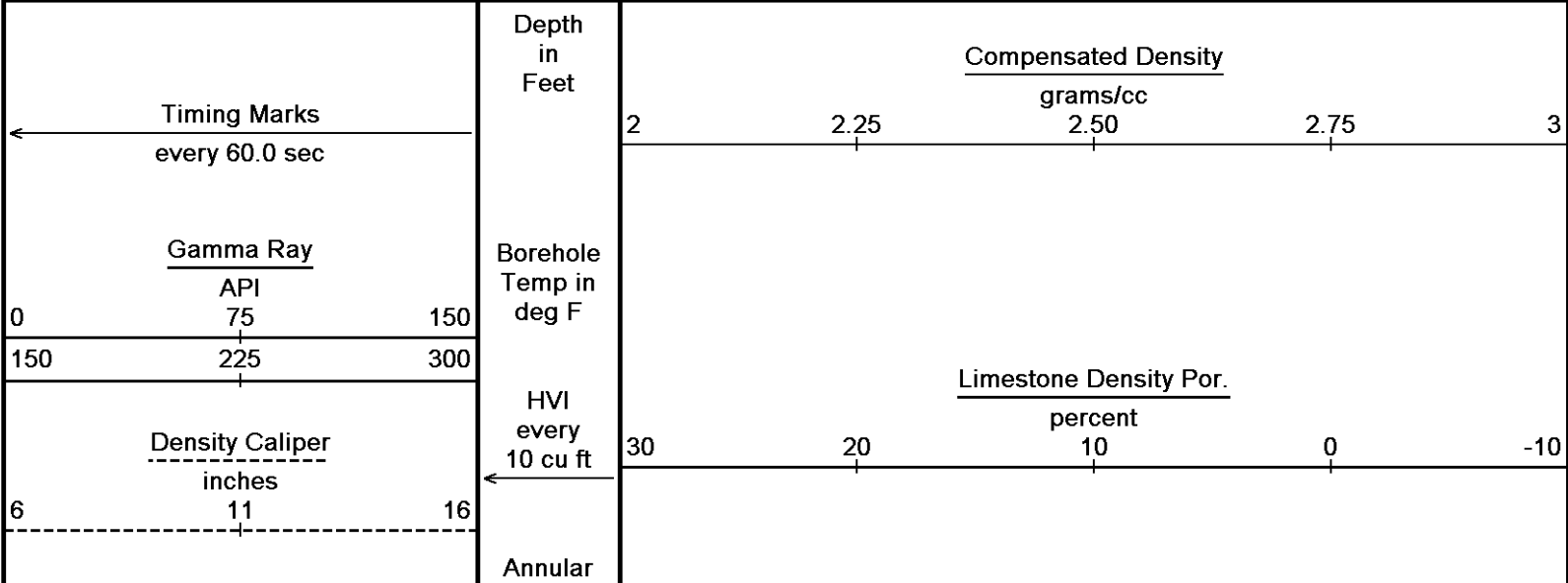


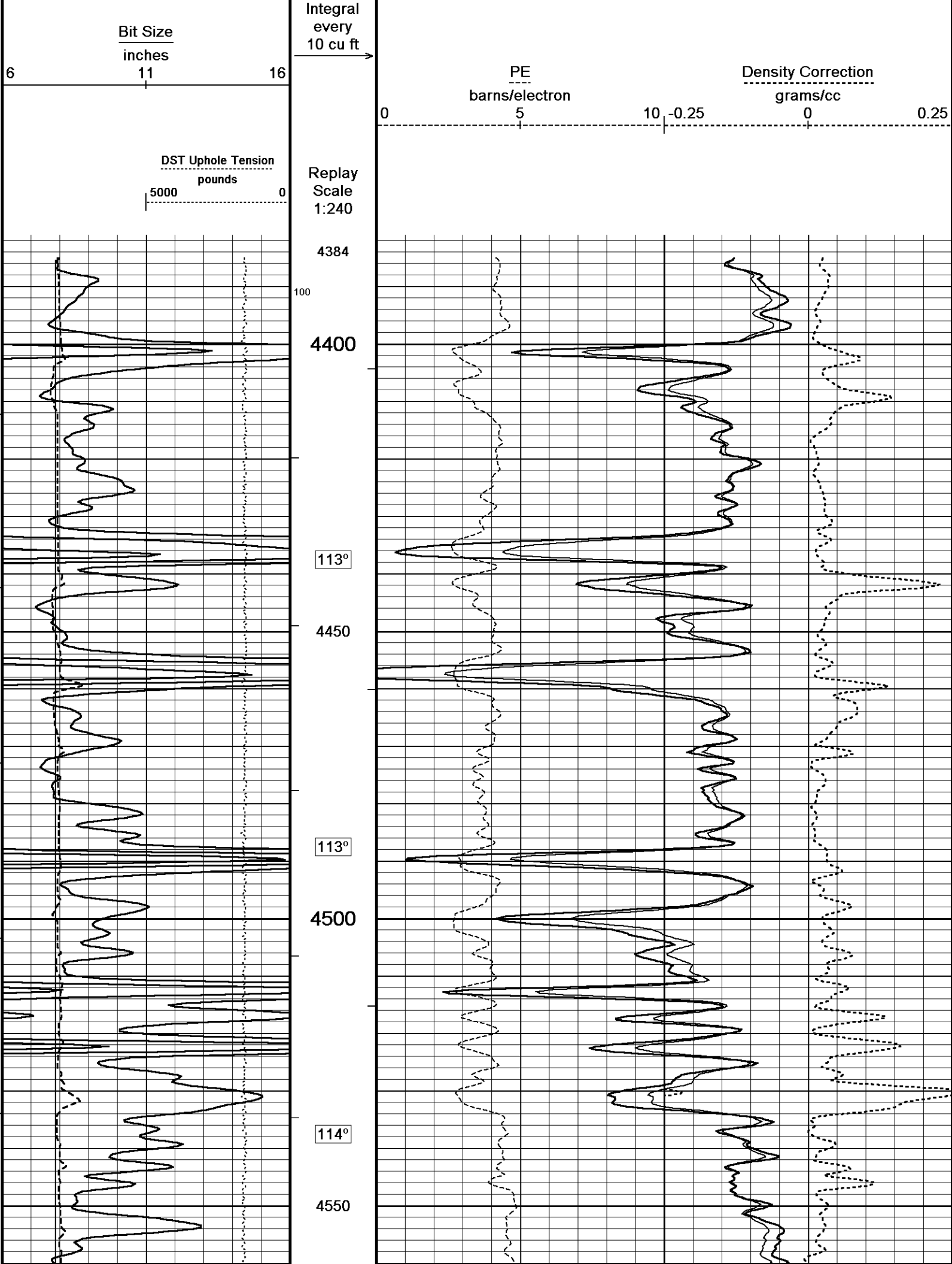
Depth Based Data - Maximum Sampling Increment 10.0cm Plotted on 23-SEP-2012 08:17
 Filename: C:\Minimus 13.02.6600\Data\Shakespeare Peterson #...\Shakespeare Peterson #2-8 Main.dta Recorded on 23-SEP-2012 06:12
 System Versions: Logged with 13.02.6600 Plotted with 13.02.6600

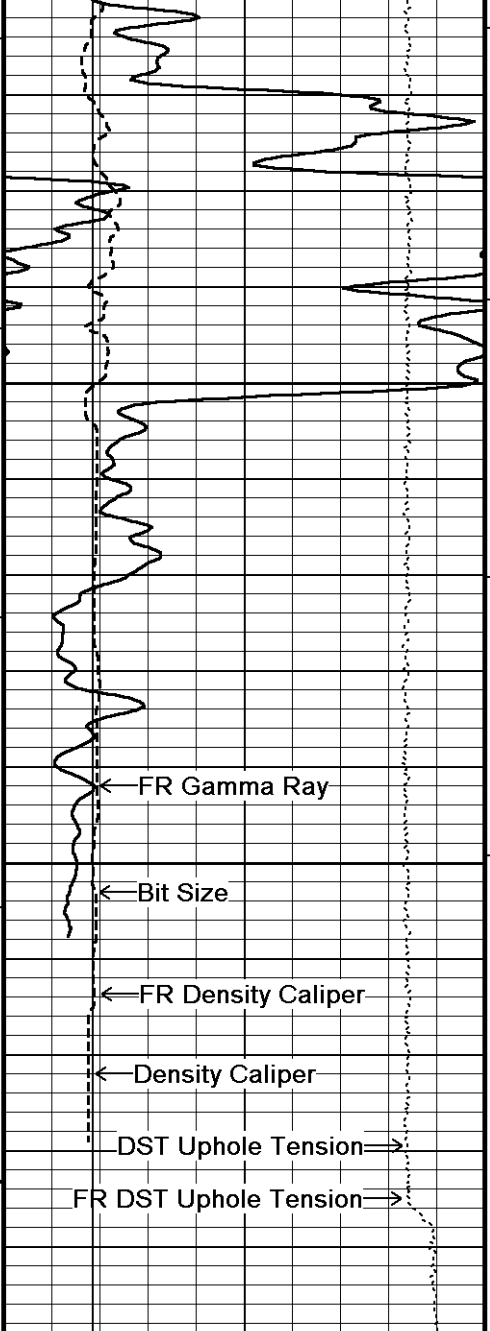
5 INCH MAIN

REPEAT SECTION

Depth Based Data - Maximum Sampling Increment 10.0cm Plotted on 23-SEP-2012 08:17
 Filename: C:\Minimus 13.02.6600\Data\Shakespeare Peterson...\Shakespeare Peterson #2-8 Repeat.dta Recorded on 23-SEP-2012 05:52
 System Versions: Logged with 13.02.6600 Plotted with 13.02.6600







115°

4600

114°

4650

0

4700

4714

Depth
in
Feet

← Timing Marks
every 60.0 sec

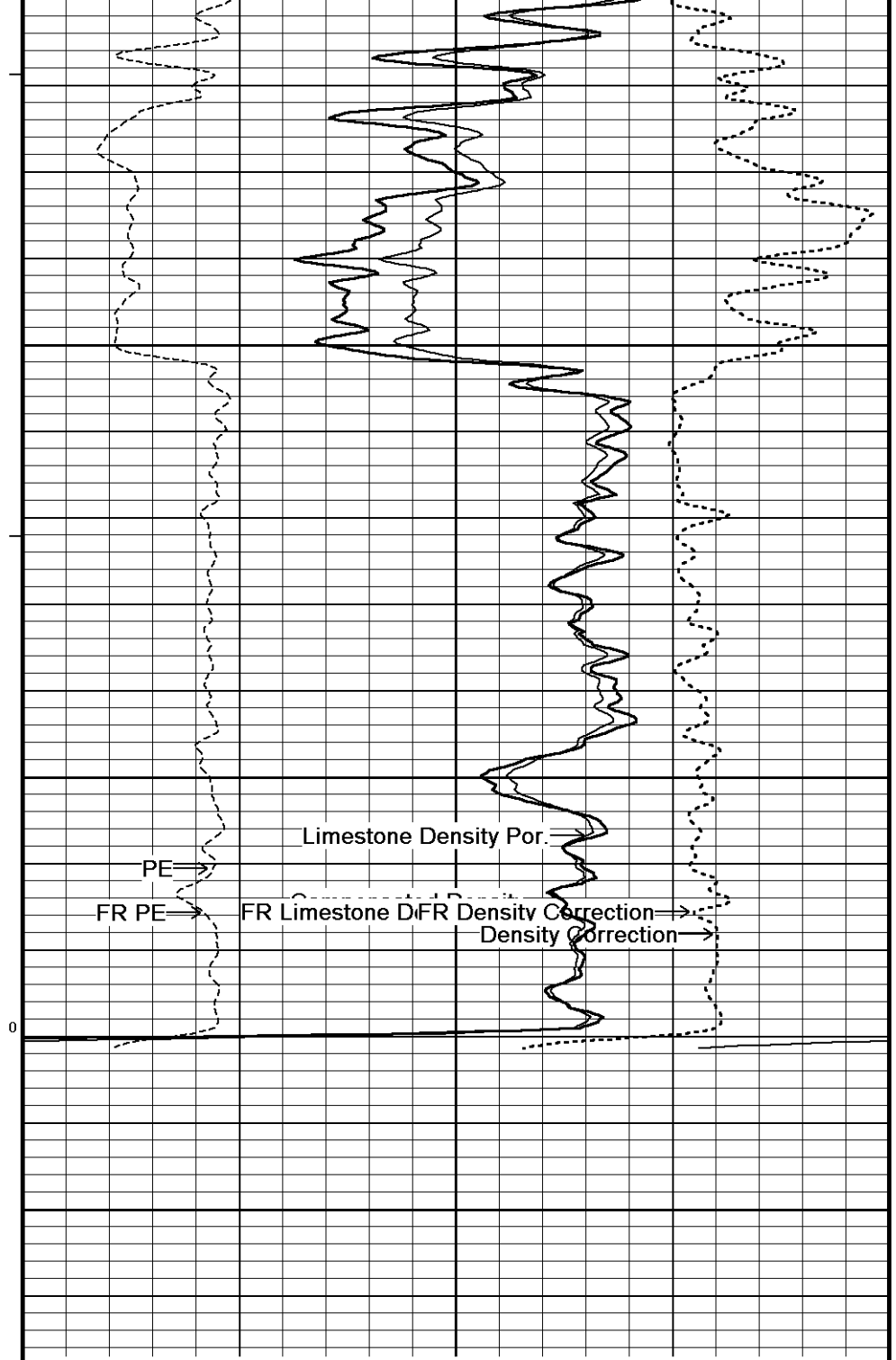
Gamma Ray
API
0 75 150
150 225 300

Borehole
Temp in
deg F

Density Caliper
inches
← 6 11 16

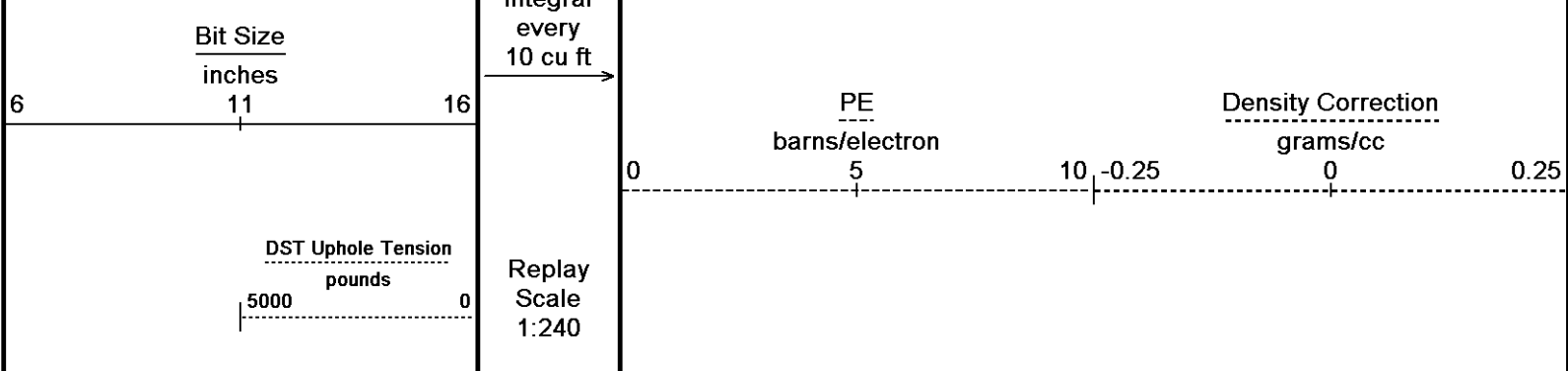
HVI
every
10 cu ft

Annular
Integral



Compensated Density
grams/cc
2 2.25 2.50 2.75 3

Limestone Density Por.
percent
30 20 10 0 -10



Depth Based Data - Maximum Sampling Increment 10.0cm
 Plotted on 23-SEP-2012 08:17
 Filename: C:\Minimus 13.02.6600\Data\Shakespeare Peterson...\Shakespeare Peterson #2-8 Repeat.dta
 Recorded on 23-SEP-2012 05:52
 System Versions: Logged with 13.02.6600 Plotted with 13.02.6600

↑ REPEAT SECTION ↑

BEFORE SURVEY CALIBRATION
 C:\Minimus 13.02.6600\Data\Shakespeare Peterson #2-8\Shakespeare Peterson #2-8 Main.dta

General Constants All 000 Last Edited on 23-SEP-2012,04:00

| | | |
|---|-----------------------|------------|
| General Parameters | | |
| Mud Resistivity | 1.140 | ohm-metres |
| Mud Resistivity Temperature | 93.000 | degrees F |
| Water Level | 0.000 | feet |
| Density/Neutron Processing | Wet Hole | |
| Hole/Annular Volume and Differential Caliper Parameters | | |
| HVOL Method | Single Caliper | |
| HVOL Caliper 1 | Density Caliper | |
| HVOL Caliper 2 | N/A | |
| Annular Volume Diameter | 5.500 | inches |
| Caliper for Differential Caliper | Density Caliper | |
| Rwa Parameters | | |
| Porosity used | Base Density Porosity | |
| Resistivity used | Array Ind. One Res Rt | |
| RWA Constant A | 0.610 | |
| RWA Constant M | 2.150 | |

Down-hole Tension Calibration SMS 0 Field Calibration on 23-SEP-2012 05:02

| Reading No | Measured | Calibrated (lbs) |
|------------|----------|------------------|
| 1 | 13695.54 | 0.00 |
| 2 | 13994.89 | 400.00 |

Gamma Calibration MCG-C 208 Field Calibration on 23-SEP-2012 00:17

| | Measured | Calibrated (API) |
|--------------------|----------|------------------|
| Background | 67 | 46 |
| Calibrator (Gross) | 1106 | 771 |
| Calibrator (Net) | 1039 | 725 |

Gamma Constants MCG-C 208 Last Edited on 23-SEP-2012,04:00

| | | |
|-------------------------------|-----------------|-------|
| Gamma Calibrator Number | GR38 | |
| Mud Density | 1.10 | gm/cc |
| Caliper Source for Processing | Density Caliper | |
| Tool Position | Eccentred | |
| Concentration of KCl | 0.00 | kppm |

SP Calibration MCG-C 208 Field Calibration on 03-AUG-2012 22:37

| | Measured | Calibrated (mV) |
|-------------|----------|-----------------|
| Reference 1 | 100.2 | 101.0 |
| Reference 2 | -101.3 | -101.0 |

High Resolution Temperature Calibration MCG-C 208 Field Calibration on 03-AUG-2012 16:10

| | | |
|-------|----------|-------------------|
| | Measured | Calibrated(Deg F) |
| Lower | 50.00 | 50.00 |
| Upper | 75.00 | 75.00 |

High Resolution Temperature Constants MCG-C 208

Last Edited on

Pre-filter Length 11

Caliper Calibration MML-A 4

Base Calibration on 27-AUG-2012 09:13
Field Calibration on 23-SEP-2012 00:13

Base Calibration

| Reading No | Measured | Calibrator Size (in) |
|------------|----------|----------------------|
| 1 | 15511 | 5.98 |
| 2 | 18793 | 7.97 |
| 3 | 22115 | 9.86 |
| 4 | 26057 | 11.92 |
| 5 | 0 | 0.00 |
| 6 | N/A | N/A |

Field Calibration

| Measured Caliper (in) | Actual Caliper (in) |
|-----------------------|---------------------|
| 5.94 | 5.98 |

Micro Normal and Micro Inverse Calibration MML-A 4

Base Calibration on 27-AUG-2012 09:21
Field Check on 23-SEP-2012 00:11

Base Calibration

| Channel | Measured | | Calibrated (ohm-m) | |
|---------------|------------|------------|--------------------|------------|
| | Resistor 1 | Resistor 2 | Resistor 1 | Resistor 2 |
| Micro Normal | 12.2 | 60.2 | 5.0 | 25.0 |
| Micro Inverse | 15.7 | 78.5 | 5.0 | 25.0 |

| Channel | Base Check (ohm-m) | Field Check (ohm-m) |
|---------------|--------------------|---------------------|
| Micro Normal | 62.9 | 62.8 |
| Micro Inverse | 48.2 | 48.2 |

Micro Normal and Micro Inverse Constants MML-A 4

Last Edited on 15-SEP-2012,14:38

| | | | |
|------------------------|---|--------|--|
| Pad Type | 8-12 in Soft Rubber Inflatable 006-9011-159 | | |
| Micro Normal K Factor | 1.0000 | | |
| Micro Inverse K Factor | 1.0000 | | |
| Standoff Offset | N/A | inches | |

Neutron Calibration MDN-A.B 65

Base Calibration on 28-AUG-2012 10:35
Field Check on 23-SEP-2012 00:21

Base Calibration

| Ratio | Measured | | Calibrated (cps) | |
|-------|----------|-----|------------------|-----|
| | Near | Far | Near | Far |
| | 3134 | 97 | 3714 | 110 |
| | 32.240 | | 33.764 | |

Field Calibrator at Base

| Calibrated (cps) |
|------------------|
| 1654 |
| 2401 |
| Ratio |
| 0.689 |

Field Check

| Calibrated (cps) |
|------------------|
| 1650 |
| 2376 |
| Ratio |
| 0.695 |

Neutron Constants MDN-A.B 65

Last Edited on 23-SEP-2012,00:17

| | | |
|-------------------------------|-----------------|--------|
| Neutron Source Id | PN-521 | |
| Neutron Jig Number | 5824NE | |
| Epithermal Neutron | No | |
| Caliper Source for Processing | Density Caliper | |
| Stand-off | 0.00 | inches |
| Mud Density | 1.00 | gm/cc |
| Limestone Sigma | 7.10 | cu |
| Sandstone Sigma | 4.26 | cu |
| Dolomite Sigma | 4.70 | cu |
| Formation Pressure Source | Constant Value | |
| Formation Pressure | 0.00 | kpsi |
| Temperature Source | Constant Value | |

| | | |
|---------------------------------|----------------|-----------|
| Temperature | 68.00 | degrees F |
| Mud Salinity | 0.00 | kppm |
| Salinity Correction | Not Applied | |
| Formation Fluid Salinity Source | Constant Value | |
| Formation Fluid Salinity | 0.00 | kppm |
| Barite Mud Correction | Not Applied | |

FE Calibration MFE-B.J 352 Base Calibration on 27-AUG-2012 14:50
Field Check on 23-SEP-2012 00:03

| | | |
|------------------|----------|--------------------|
| Base Calibration | | |
| | Measured | Calibrated (ohm-m) |
| Reference 1 | 0.0 | 0.0 |
| Reference 2 | 963.9 | 126.8 |
| Base Check | | 281.2 |
| Field Check | | 281.5 |

FE Constants MFE-B.J 352 Last Edited on 18-SEP-2012,12:42

| | | |
|----------------------------------|--------------------------|--------|
| Running Mode | No Sleeve | |
| MFE K Factor | 0.1268 | |
| Caliper Source for FE correction | Density Caliper | |
| Caliper Value for FE correction | N/A | inches |
| Rm Source for FE correction | Temperature Corr | |
| Temp. for Rm Corr. | MCG External Temperature | |
| Stand-off | 0.5 | inches |

Induction Calibration MAI-A.A 45 Base Calibration on 26-JUL-2012,09:22
Field Check on 23-SEP-2012 00:02

| | | | | | |
|-----------------------|------|---------------------|------|----------------------|--------|
| Base Calibration | | | | | |
| Test Loop Calibration | | Measured | | Calibrated (mmho/m) | |
| Channel | Low | High | Low | High | |
| 1 | 14.4 | 472.6 | 9.3 | 966.2 | |
| 2 | 5.7 | 374.0 | 7.6 | 821.4 | |
| 3 | 3.4 | 261.2 | 5.2 | 566.0 | |
| 4 | 2.5 | 133.9 | 2.6 | 279.2 | |
| Array Temperature | | 78.4 | | Deg F | |
| Channel | | Base Check (mmho/m) | | Field Check (mmho/m) | |
| | | Low | High | Low | High |
| 1 | | 0.0 | 0.0 | 19.0 | 3851.7 |
| 2 | | 0.0 | 0.0 | 31.8 | 3629.6 |
| 3 | | 0.0 | 0.0 | 28.7 | 3049.8 |
| 4 | | 0.0 | 0.0 | 18.3 | 2079.4 |
| Deep | | 0.0 | 0.0 | 16.1 | 1911.6 |
| Medium | | 0.0 | 0.0 | 42.5 | 4061.2 |
| Shallow | | 0.0 | 0.0 | 49.7 | 5483.3 |
| Array Temperature | | | 0.0 | 70.6 | Deg F |

Induction Constants MAI-A.A 45 Last Edited on 22-SEP-2012,23:59

| | | |
|-----------------------------------|--------------------------|------------|
| Induction Model | RtAP-WBM | |
| Caliper for Borehole Corr. | Density Caliper | |
| Hole Size for Borehole Correction | 2.500 | inches |
| Tool Centred | No | |
| Stand-off Type | Fins | |
| Stand-off | 0.50 | inches |
| Number of Fins on Stand-off | 8.0000 | |
| Stand-off Fin Angle | 45.00 | degrees |
| Stand-off Fin Width | 0.5000 | inches |
| Borehole Corr. Rm Source | Temperature Corr | |
| Temp. for Rm Corr. | MCG External Temperature | |
| Squasher Start | 0.0020 | mhos/metre |
| Squasher Offset | N/A | mhos/metre |

| | | | |
|------------------------|--------|------|--------|
| Borehole Normalisation | | | |
| DRM1 | 0.0000 | DRC1 | 0.0000 |
| DRM2 | 0.0000 | DRC2 | 0.0000 |
| MRM1 | 0.0000 | MRC1 | 0.0000 |
| MRM2 | 0.0000 | MRC2 | 0.0000 |

| | | | |
|------|--------|------|--------|
| MRM2 | 0.0000 | MRC2 | 0.0000 |
| SRM1 | 0.0000 | SRC1 | 0.0000 |
| SRM2 | 0.0000 | SRC2 | 0.0000 |

Calibration Site Corrections

| | | |
|-----------|------|-------------|
| Channel 1 | 0.00 | mmhos/metre |
| Channel 2 | 0.00 | mmhos/metre |
| Channel 3 | 0.00 | mmhos/metre |
| Channel 4 | 0.00 | mmhos/metre |

Apparent Porosity and Water Saturation Constants

| | | |
|--------------------------------------|--------|---------|
| Archie Constant (A) | 1.00 | |
| Cementation Exponent (M) | 2.00 | |
| Saturation Exponent (N) | 2.00 | |
| Saturation of Water for Apor | 100.00 | percent |
| Resistivity of Water for Apor and Sw | 0.05 | ohm-m |
| Resistivity of Mud Filtrate for Sw | 0.00 | ohm-m |
| Source for Rt | 0.00 | |
| Source for Rxo | 0.00 | |

High Resolution Temperature Calibration MAI-A.A 45

Field Calibration on 26-JUL-2012,09:09

| | | |
|-------|----------|-------------------|
| | Measured | Calibrated(Deg F) |
| Lower | 50.00 | 50.00 |
| Upper | 75.00 | 75.00 |

High Resolution Temperature Constants MAI-A.A 45

Last Edited on

| | |
|-------------------|----|
| Pre-filter Length | 11 |
|-------------------|----|

Caliper Calibration MPD-B 31

Base Calibration on 28-AUG-2012 11:03

Field Calibration on 23-SEP-2012 00:05

Base Calibration

| | | |
|------------|----------|----------------------|
| Reading No | Measured | Calibrator Size (in) |
| 1 | 18576 | 3.99 |
| 2 | 27056 | 5.98 |
| 3 | 35613 | 7.97 |
| 4 | 44032 | 9.86 |
| 5 | 53360 | 11.92 |
| 6 | N/A | N/A |

Field Calibration

| | |
|-----------------------|---------------------|
| Measured Caliper (in) | Actual Caliper (in) |
| 5.96 | 5.98 |

Photo Density Calibration MPD-B 31

Base Calibration on 28-AUG-2012 11:22

Field Check on 23-SEP-2012 00:10

Density Calibration

| | | | | |
|------------------|----------|-------|------------------|-------|
| Base Calibration | Measured | | Calibrated (sdu) | |
| | Near | Far | Near | Far |
| Reference 1 | 46103 | 23728 | 59556 | 30836 |
| Reference 2 | 19270 | 1960 | 24941 | 2541 |

Field Check at Base

| | |
|-------|-------|
| 688.3 | 844.7 |
|-------|-------|

Field Check

| | |
|-------|-------|
| 687.8 | 848.7 |
|-------|-------|

PE Calibration

| | | | | |
|------------------|----------|-------|-------|------------|
| Base Calibration | Measured | | | Calibrated |
| | WS | WH | Ratio | Ratio |
| Background | 127 | 604 | | |
| Reference 1 | 18457 | 45978 | 0.404 | 0.371 |
| Reference 2 | 5504 | 19174 | 0.290 | 0.272 |

Field Check at Base

| | |
|-------|-------|
| 127.0 | 604.2 |
|-------|-------|

Field Check

| | |
|-------|-------|
| 127.2 | 602.6 |
|-------|-------|

Density Constants MPD-B 31

Last Edited on 23-SEP-2012 04:00

| | | |
|-------------------------------|-----------------|-------|
| Density Source Id | 254 | |
| Nylon Calibrator Number | DNCE695 | |
| Aluminium Calibrator Number | DACD698 | |
| Density Shoe Profile | 8 inch | |
| Caliper Source for Processing | Density Caliper | |
| PE Correction to Density | Not Applied | |
| Mud Density | 1.10 | gm/cc |
| Mud Density Z/A Multiplier | 1.13 | |
| Mud Filtrate Density | 1.00 | gm/cc |
| Dry Hole Mud Filtrate Density | 1.00 | gm/cc |
| DNCT | 0.00 | gm/cc |
| CRCT | 0.00 | gm/cc |
| Density Z/A Correction | Hybrid | |

| Matrix density (gm/cc) | Depth (m) |
|------------------------|-----------|
| 2.71 | |
| 0.00 | 0.00 |
| 0.00 | 0.00 |
| 0.00 | 0.00 |
| 0.00 | 0.00 |
| 0.00 | 0.00 |
| 0.00 | 0.00 |
| 0.00 | 0.00 |
| 0.00 | 0.00 |
| 0.00 | 0.00 |

DOWNHOLE EQUIPMENT

C:\Minimus 13.02.6600\Data\Shakespeare Peterson #2-8\Shakespeare Peterson #2-8 Main.dta

3/8" Triple Cone Cable Head (MCB C A)
 MCB-C.A 5 LG: 1.58 ft WT: 15.4 lb OD: 2.24 in

Compact Comms Gamma
 MCG-C 208 LG: 8.70 ft WT: 63.9 lb OD: 2.24 in

Compact Micro-log
 MML-A 4 LG: 7.97 ft WT: 81.6 lb OD: 2.24 in

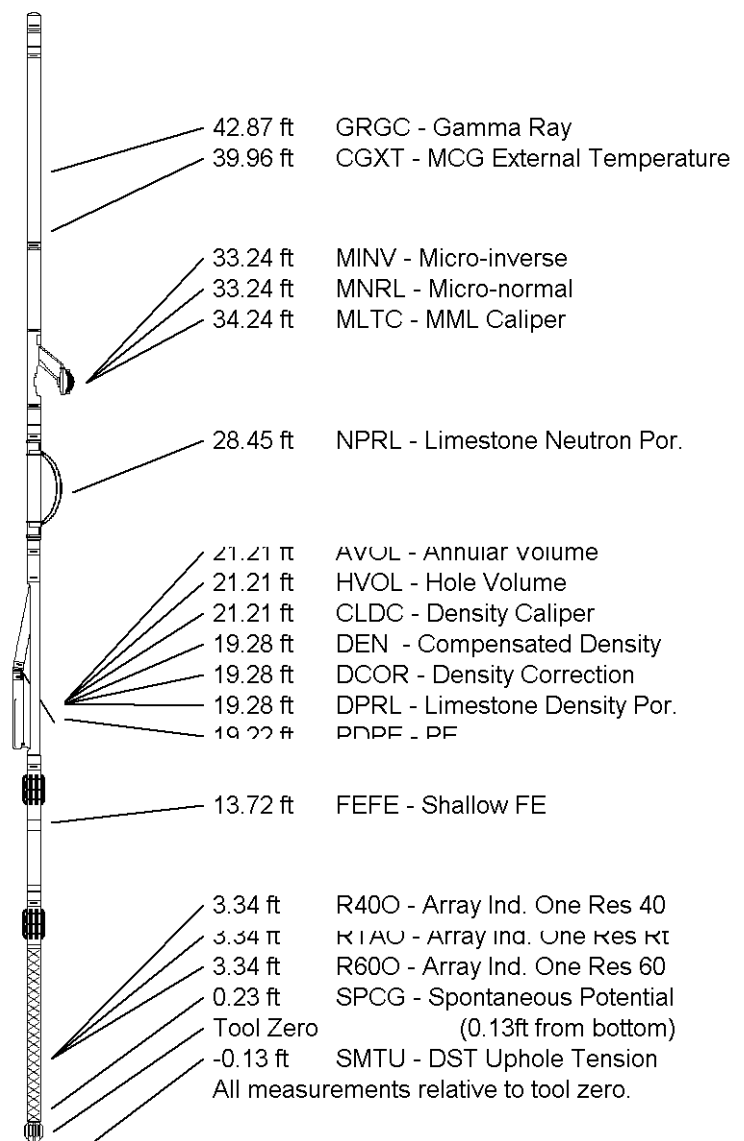
Compact Neutron
 MDN-A.B 65 LG: 5.04 ft WT: 50.7 lb OD: 2.24 in

Compact Density/Caliper
 MPD-B 31 LG: 9.59 ft WT: 90.4 lb OD: 2.45 in

Compact Focussed Electric
 MFE-B.J 352 LG: 6.05 ft WT: 48.5 lb OD: 2.24 in

Compact Induction
 MAI-A.A 45 LG: 10.81 ft WT: 48.5 lb OD: 2.24 in

Total Length: 49.73 ft Weight: 399.0 lb



| | |
|-----------------|-------------------------------|
| COMPANY | SHAKESPEARE OIL COMPANY, INC. |
| WELL | PETERSON #2-8 |
| FIELD | STRATFORD WEST |
| PROVINCE/COUNTY | LOGAN |
| COUNTRY/STATE | U.S.A. / KANSAS |

| | | | | | |
|-------------------------|---------|------|---------------|---------|------|
| Elevation Kelly Bushing | 2981.00 | feet | First Reading | 4666.00 | feet |
| Elevation Drill Floor | 2979.00 | feet | Depth Driller | 4680.00 | feet |
| Elevation Ground Level | 2971.00 | feet | Depth Logger | 4685.00 | feet |



Weatherford[®]

COMPACT PHOTO DENSITY
COMPENSATED NEUTRON
MICRORESISTIVITY LOG