



Pioneer Energy Services

Dual Compensated Porosity Log

API No.	15-193-20,860-00-00		
Company	Norstar Petroleum, Inc.		
Well	Stover-Weed Unit No. 1-27		
Field	Unnamed		
County	Thomas		
State	Kansas		
Location	906' FSL & 102' FEL		
Sec: 27	Twp: 10S	Rge: 35W	Elevation DIL/MEL
Permanent Datum	Ground Level	Elevation 3313	K.B. 3321
Log Measured From	Kelly Bushing	8 Ft. Above Perm. Datum	D.F. 3313
Drilling Measured From	Kelly Bushing		

Date	9/16/2012		
Run Number	One		
Type Log	CNL / CDL		
Depth Driller	4935		
Depth Logger	4935		
Bottom Logged Interval	4914		
Top Logged Interval	3800		
Type Fluid In Hole	Chemical		
Salinity, PPM CL	12100		
Density	9.3		
Level	Full		
Max. Rec. Temp. F	125		
Operating Rig Time	4 1/2 Hours		
Equipment -- Location	17 Hays		
Recorded By	D. Martin		
Witnessed By	Bob Elder		
Borehole Record			
Run No	Bit	From	To
One	12.25	00	264
Two	7.875	264	TD
Casing Record			
Run No	From	To	Size
One	00	264	8.625
Two	264	TD	23#

<<< Fold Here >>>

All interpretations are opinions based on inferences from electrical or other measurements and we cannot and do not guarantee the accuracy or correctness of any interpretation, and we shall not, except in the case of gross or willful negligence on our part, be liable or responsible for any loss, costs, damages, or expenses incurred or sustained by anyone resulting from any interpretation made by any of our officers, agents or employees. These interpretations are also subject to our general terms and conditions set out in our current Price Schedule.

Comments

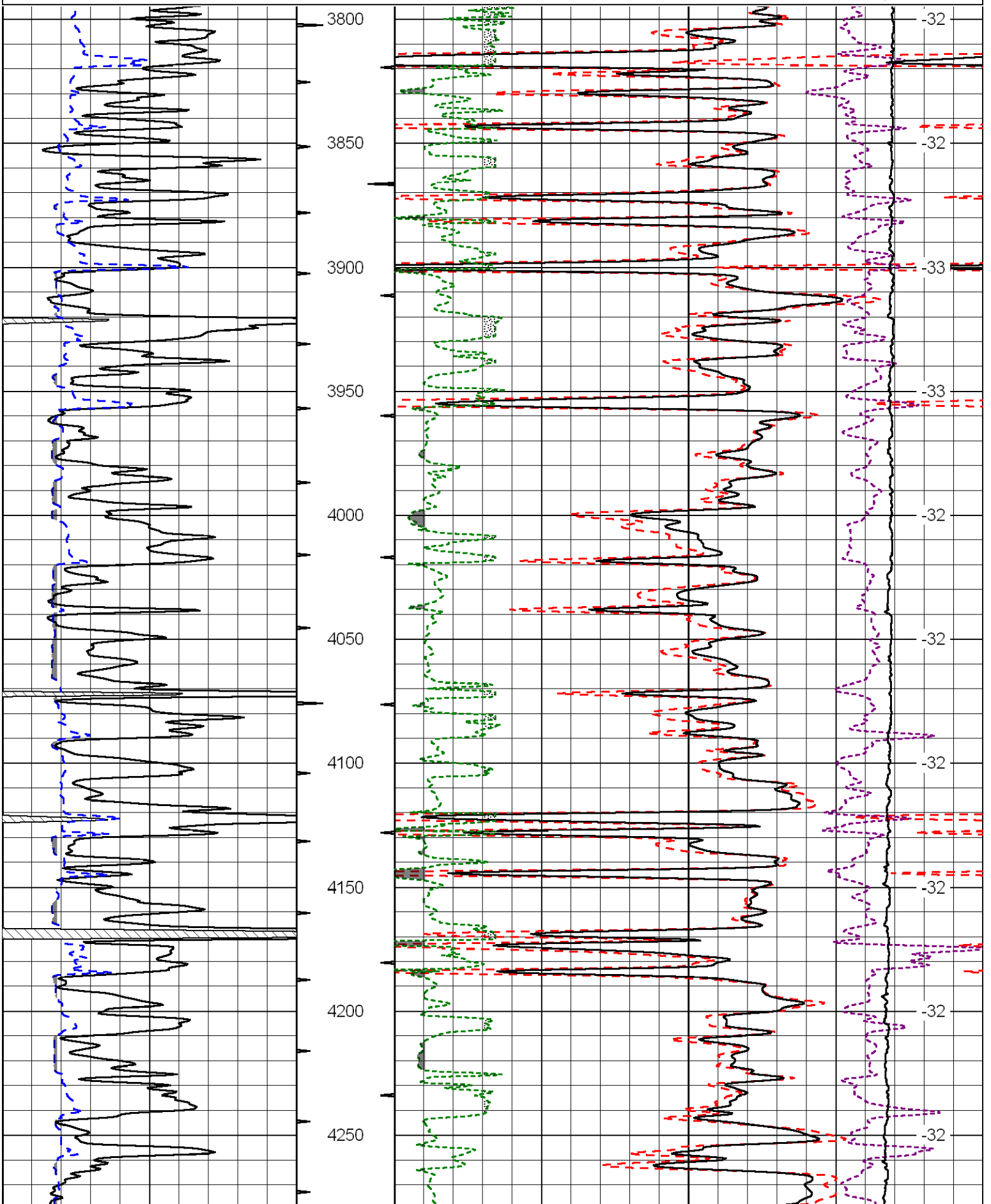
Thank you for using Log-Tech, Inc.
(785) 625-3858

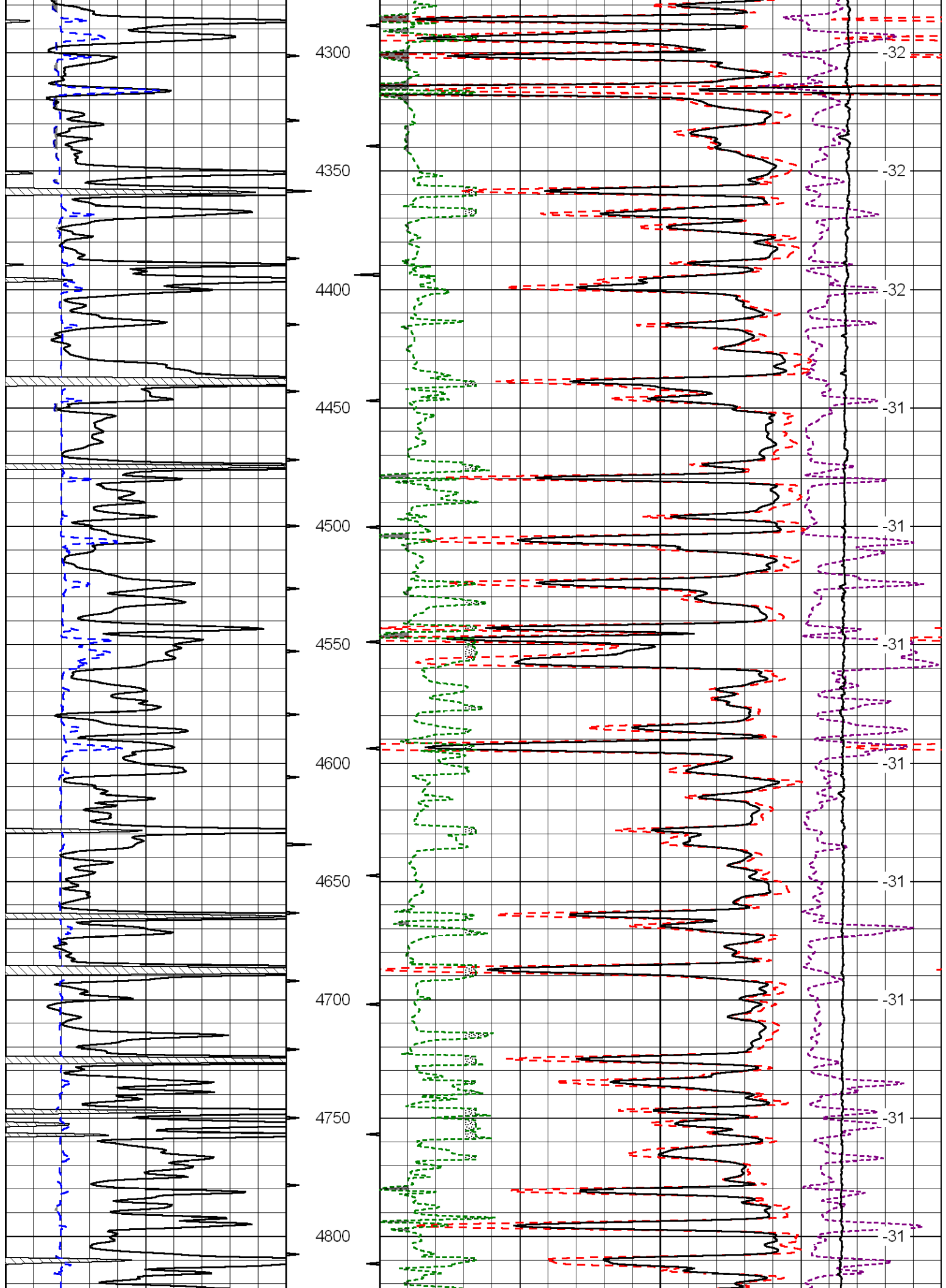
Levant I-70 Exit,
15 S, E, Immediately N Into

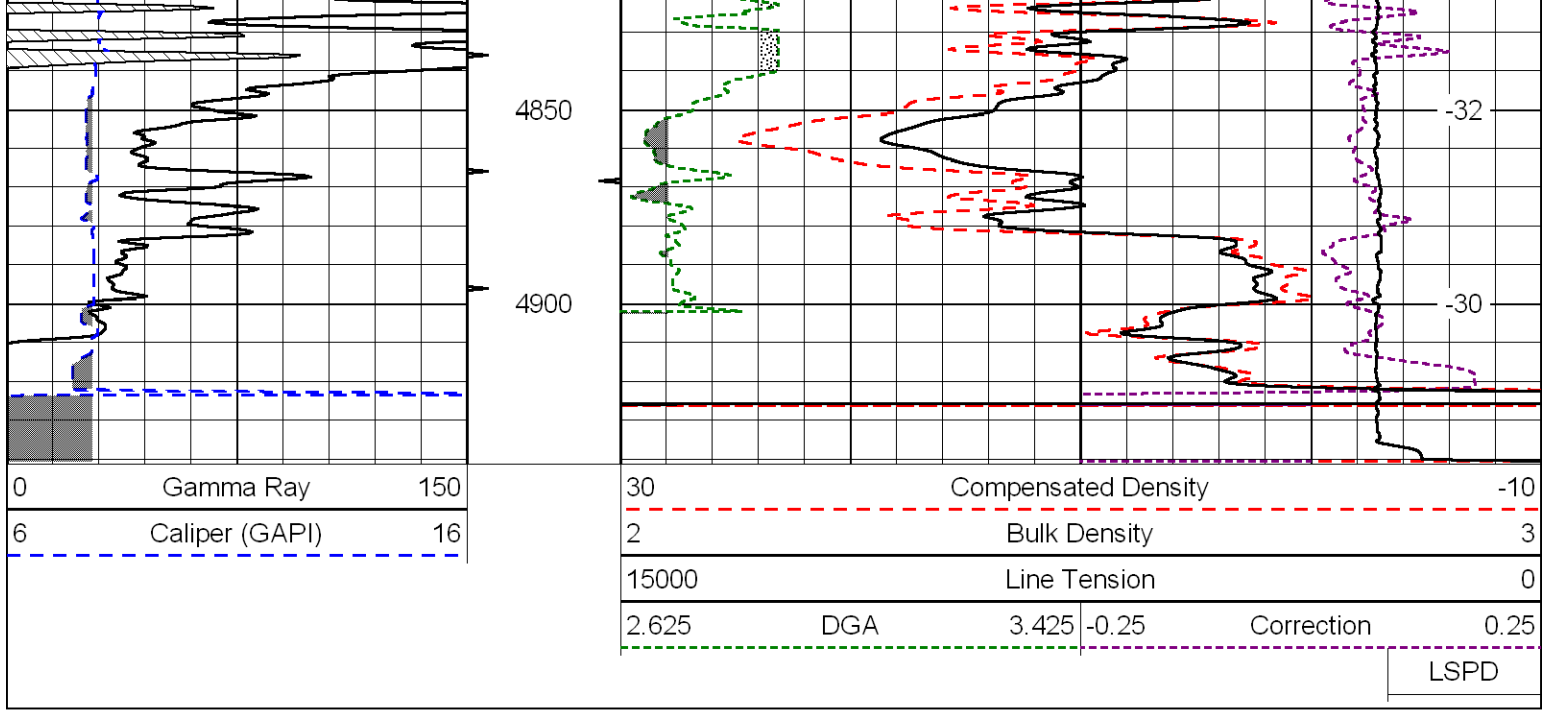
Database File: norshd.db
 Dataset Pathname: DIL/norstk
 Presentation Format: cdl
 Dataset Creation: Sun Sep 16 05:49:12 2012
 Charted by: Depth in Feet scaled 1:600

0	Gamma Ray	150
6	Caliper (GAPI)	16

30	Compensated Density		-10
2	Bulk Density		3
15000	Line Tension		0
2.625	DGA	3.425	-0.25
Correction			0.25
LSPD			







Database File: norshd.db
 Dataset Pathname: DIL/norstk
 Presentation Format: cndlspec
 Dataset Creation: Sun Sep 16 05:49:12 2012
 Charted by: Depth in Feet scaled 1:240

