



SUPERIOR
Hays,
Kansas

SONIC
LOG

Company LOTUS OPERATING COMPANY, LLC.
Well ROSE #3
Field STRANATHAN
County BARBER State KANSAS

Company LOTUS OPERATING COMPANY, LLC.
Well ROSE #3
Field STRANATHAN
County BARBER
State KANSAS

Location: API #: 15-007-23921
50' S OF
E/2 - NE - SE
SEC 25 TWP 34S RGE 12W
Permanent Datum GROUND LEVEL Elevation 1404
Log Measured From KELLY BUSHING 13' A.G.L.
Drilling Measured From KELLY BUSHING
Other Services
CDL/CNL/PE
MEL/DIL
Elevation
K.B. 1417
D.F.
G.L. 1404

Date	8-8-12
Run Number	TW0
Depth Driller	5425
Depth Logger	5426
Bottom Logged Interval	5419
Top Log Interval	3600
Casing Driller	1140
Casing Logger	1140
Bit Size	7.875
Type Fluid in Hole	CHEMICAL MUD
Density / Viscosity	9.5 / 48
pH / Fluid Loss	9.0 / 11.2
Source of Sample	FLOWLINE
Rm @ Meas. Temp	0.75 @ 86F
Rmf @ Meas. Temp	0.56 @ 86F
Rmc @ Meas. Temp	0.90 @ 86F
Source of Rmf / Rmc	MEASURED
Rm @ BHT	.500 @ 129F
Time Circulation Stopped	3 HOURS
Time Logger on Bottom	11:45 A.M.
Maximum Recorded Temperature	129F
Equipment Number	860
Location	HAYS, KS.
Recorded By	RUPP
Witnessed By	TIM HELLMAN

<<< Fold Here >>>

All interpretations are opinions based on inferences from electrical or other measurements and we cannot and do not guarantee the accuracy or correctness of any interpretation, and we shall not, except in the case of gross or willful negligence on our part, be liable or responsible for any loss, costs, damages, or expenses incurred or sustained by anyone resulting from any interpretation made by any of our officers, agents or employees. These interpretations are also subject to our general terms and conditions set out in our current Price Schedule.

Comments

SUPERIOR WELL SERVICES
785-628-6395
THANK YOU FOR YOUR BUSINESS
DIRECTIONS: MEDICINE LODGE, S TO HAWKINS RD., 1/2S, W INTO.

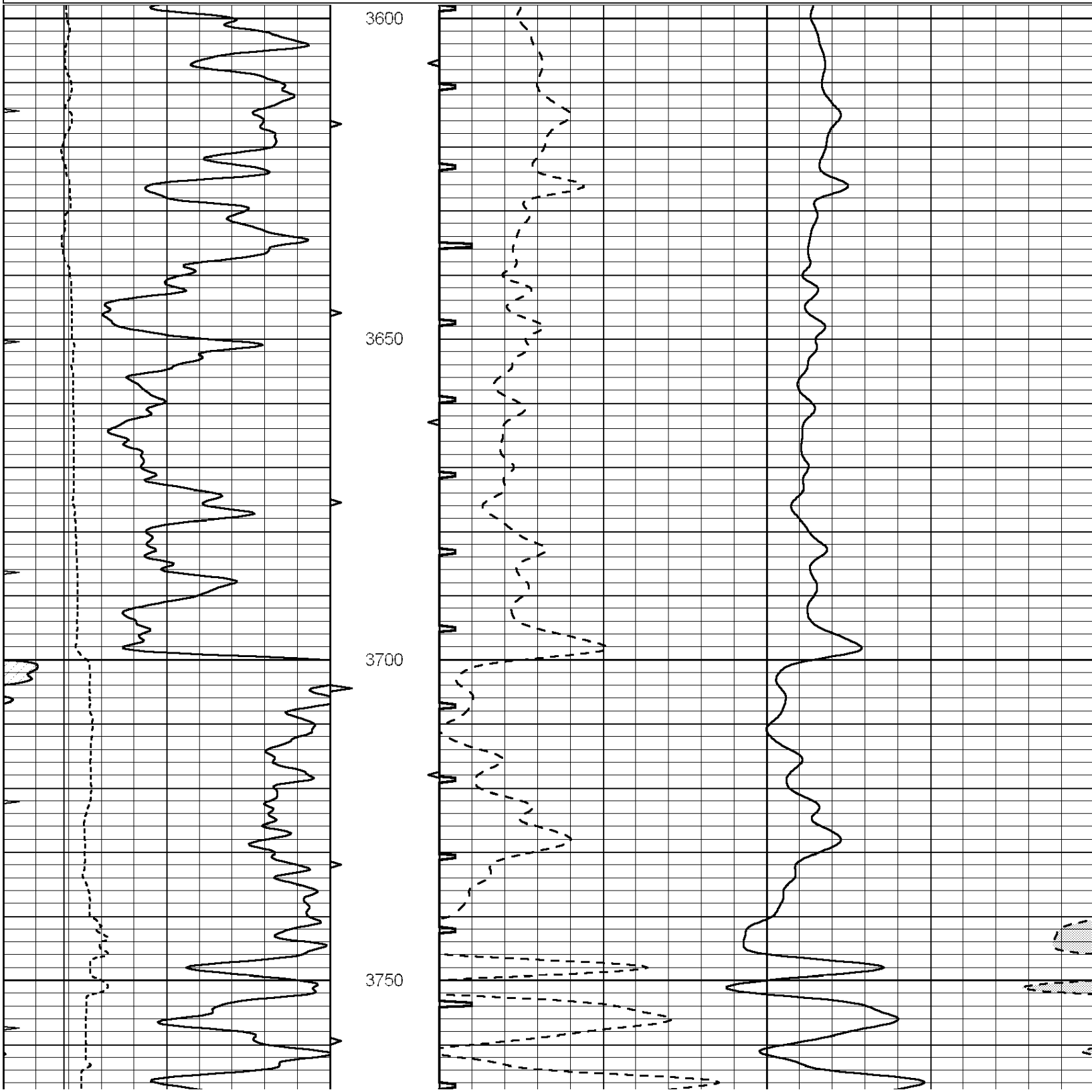


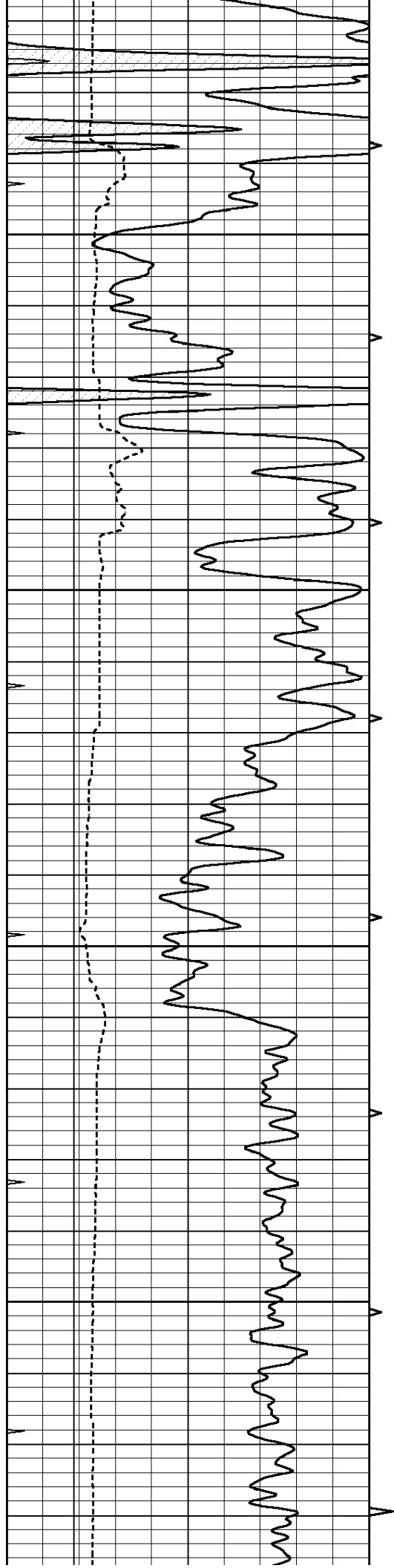
SUPERIOR
Hays,
Kansas

MAIN SECTION

Database File: 009571pdn.db
 Dataset Pathname: pass5.1
 Presentation Format: slt
 Dataset Creation: Wed Aug 08 16:21:30 2012
 Charted by: Depth in Feet scaled 1:240

6	DCAL (in)	16	ABHV	140	DELTA TIME (usec/ft)	40
0	GAMMA RAY (GAPI)	150	10 (ft3)	0	SONIC POROSITY (pu)	-10
6	MELCAL (in)	16	TBHV	0	ITT (msec)	20
0	MINMK	20	0 (ft3)	10		



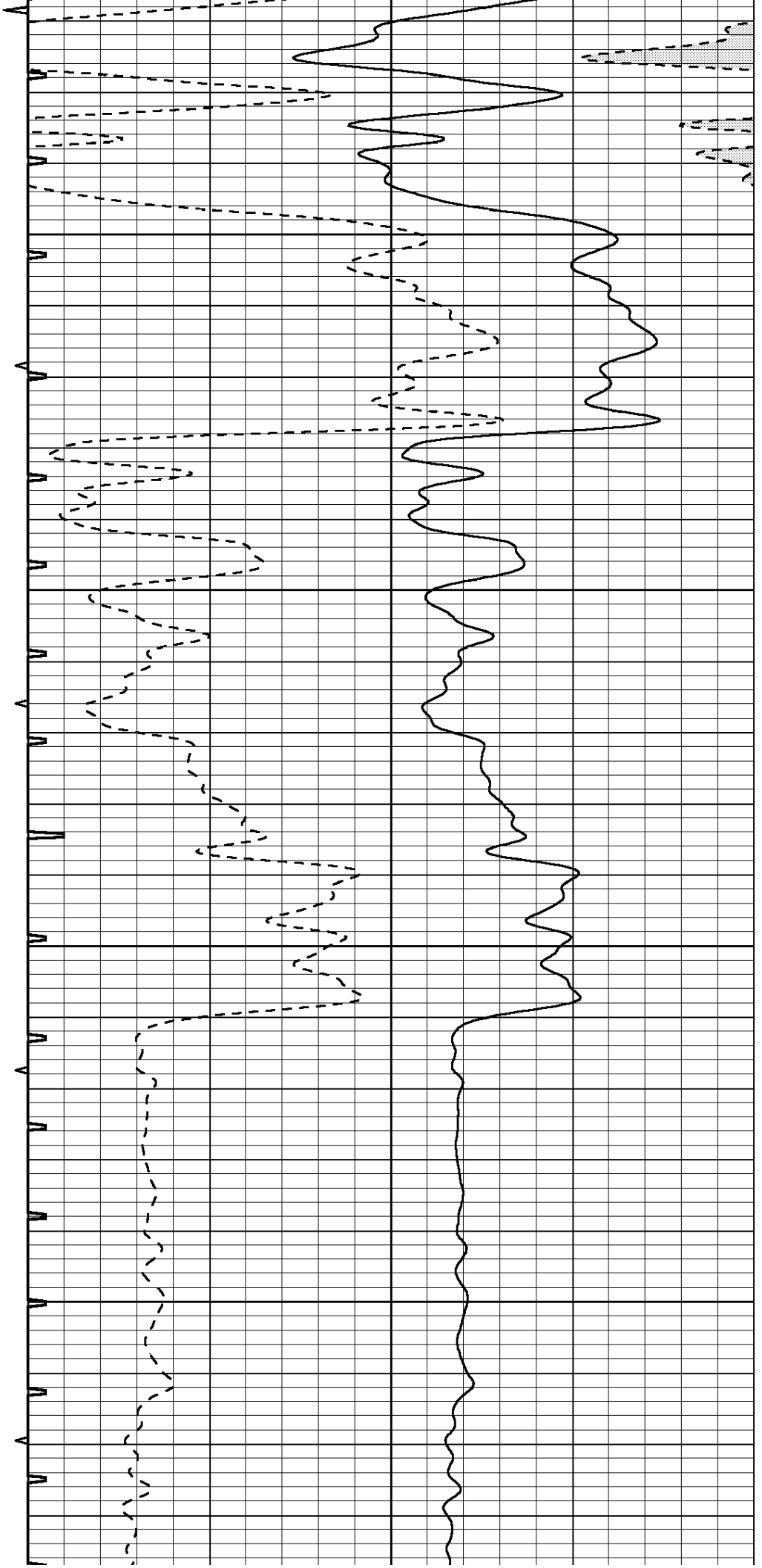


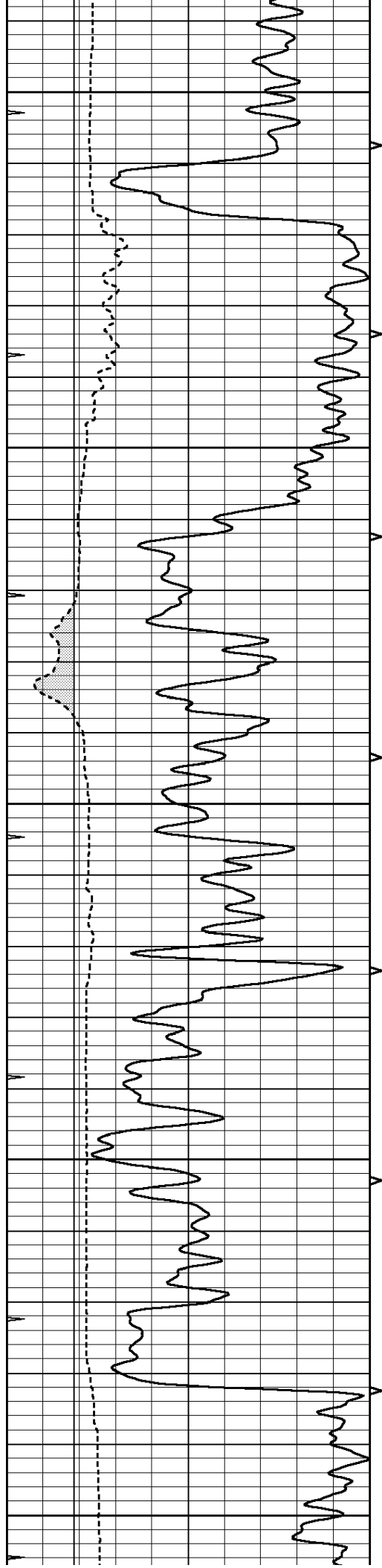
3800

3850

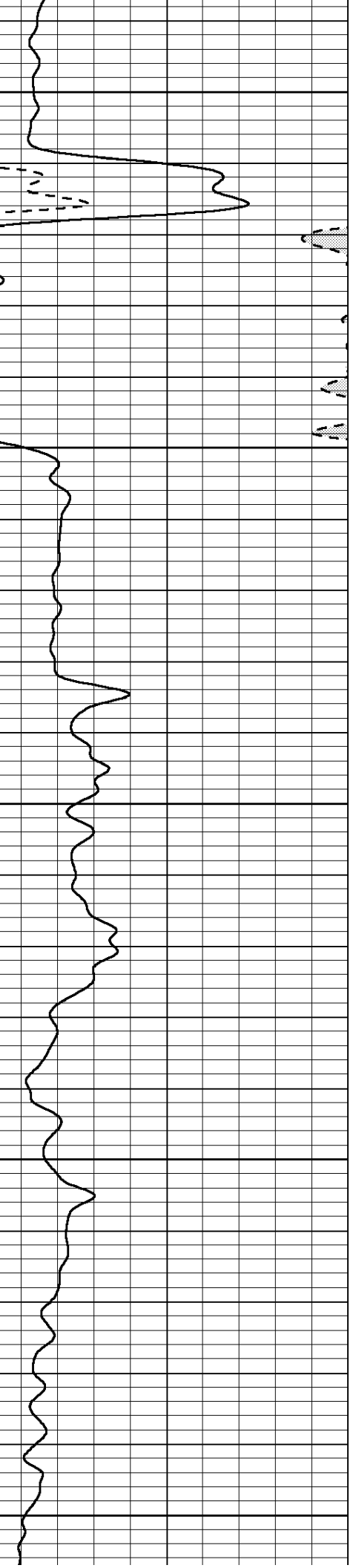
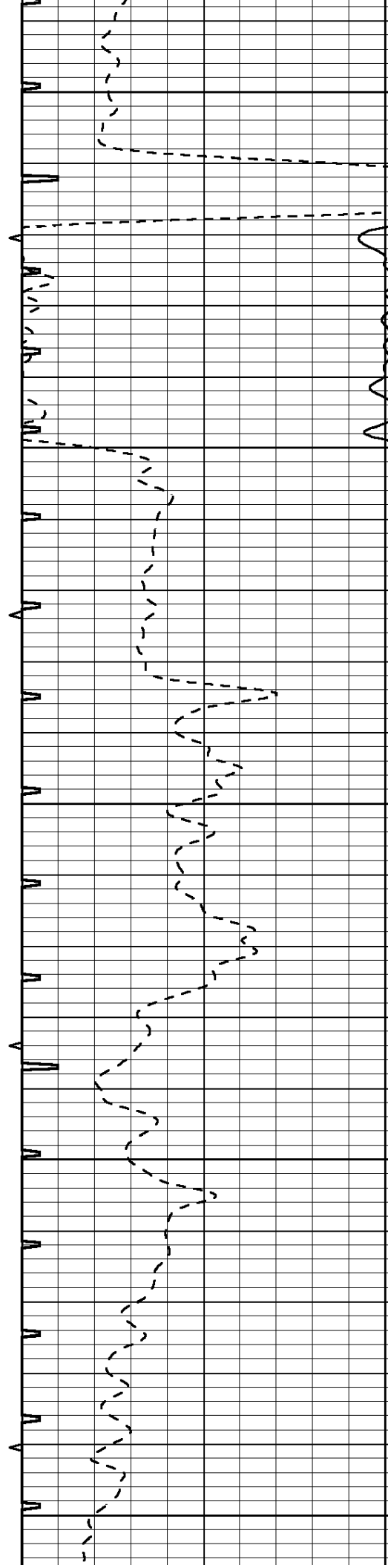
3900

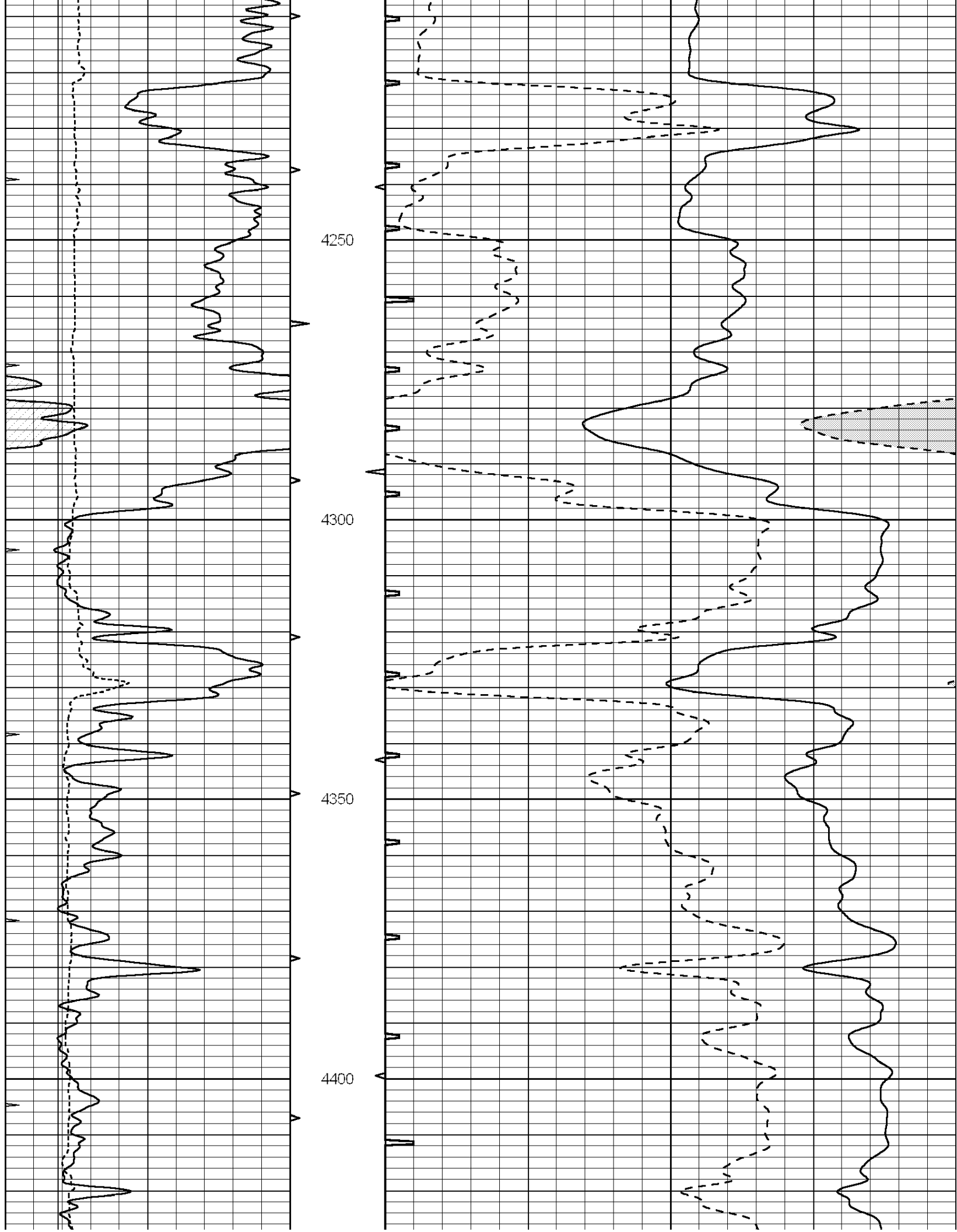
3950

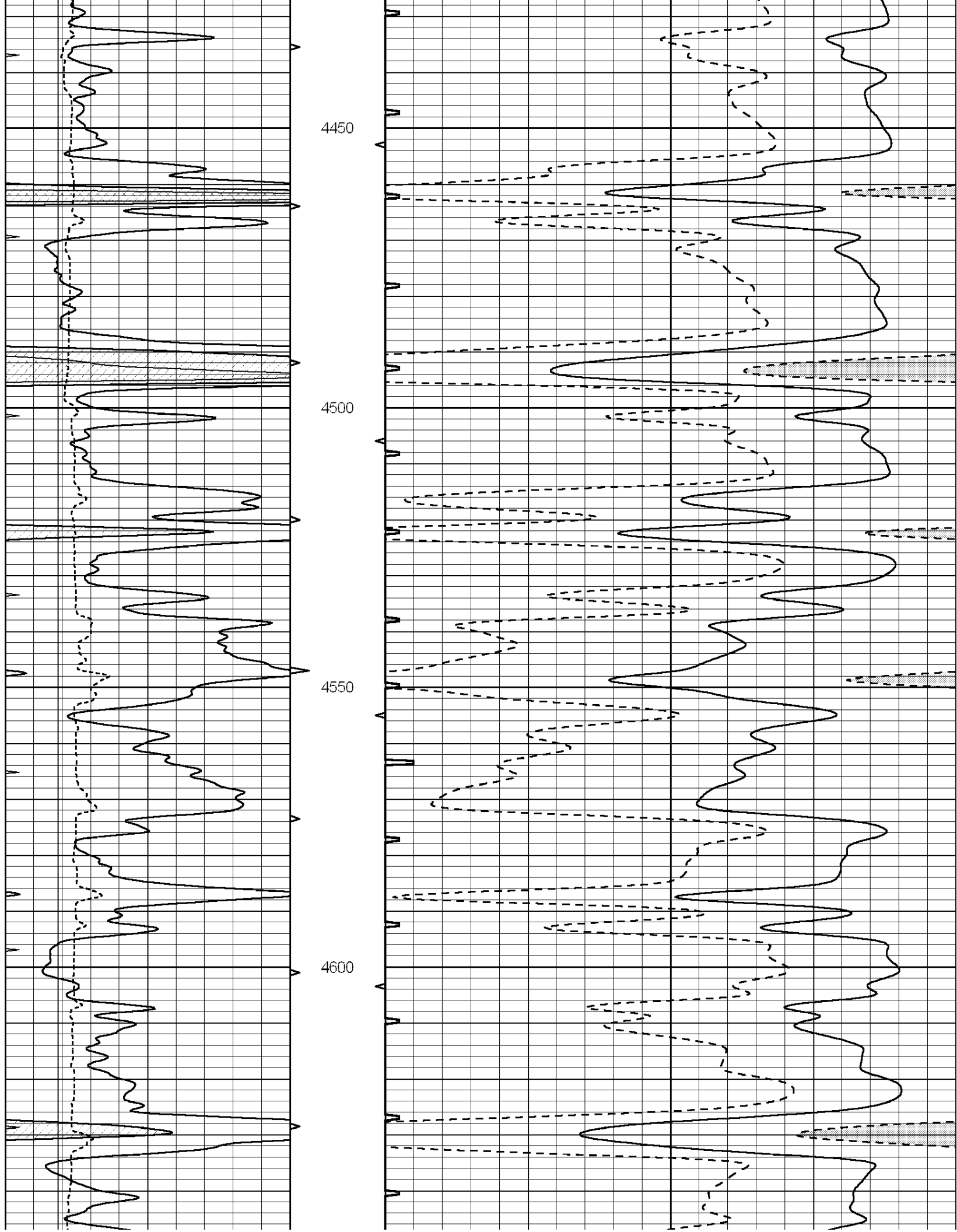


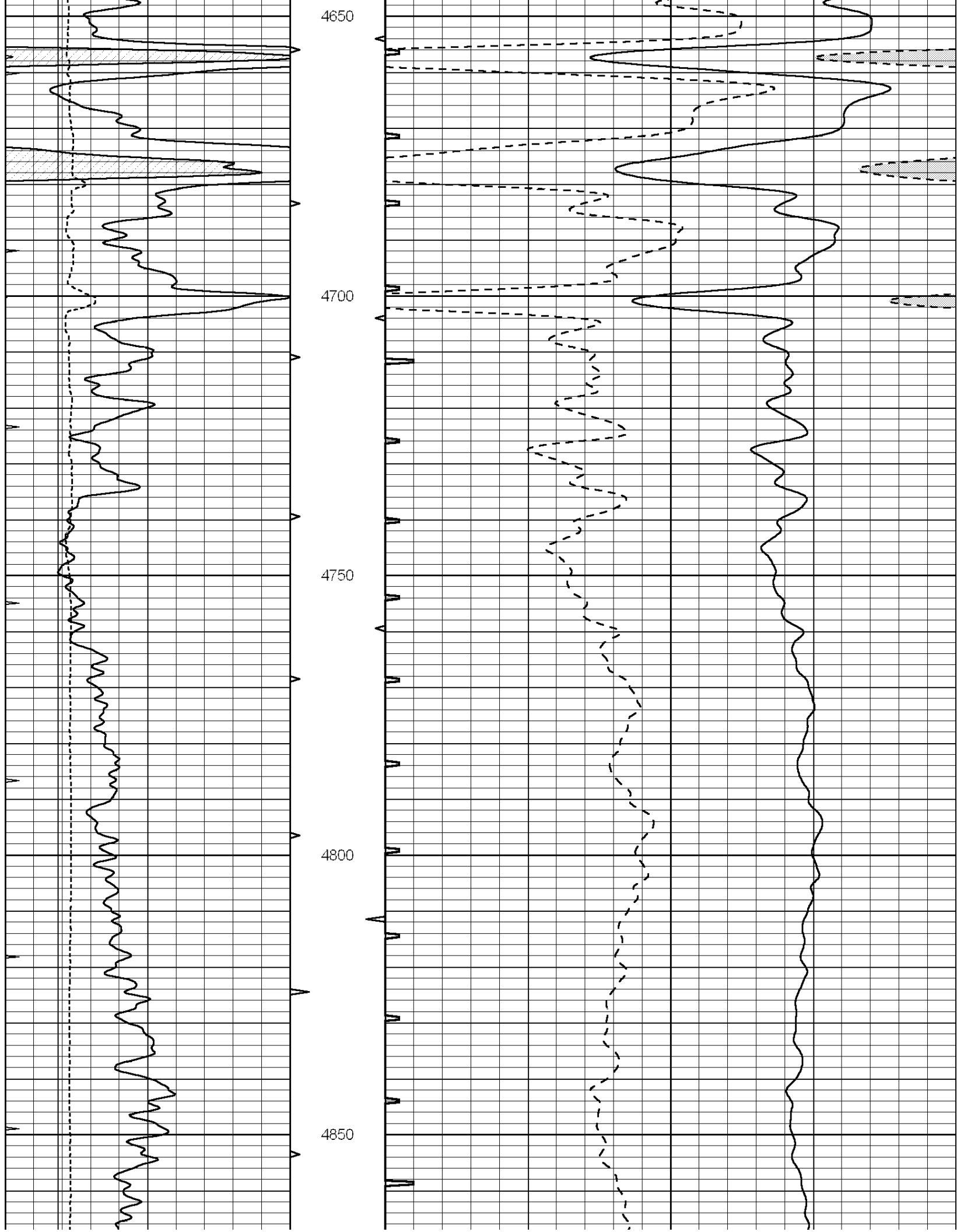


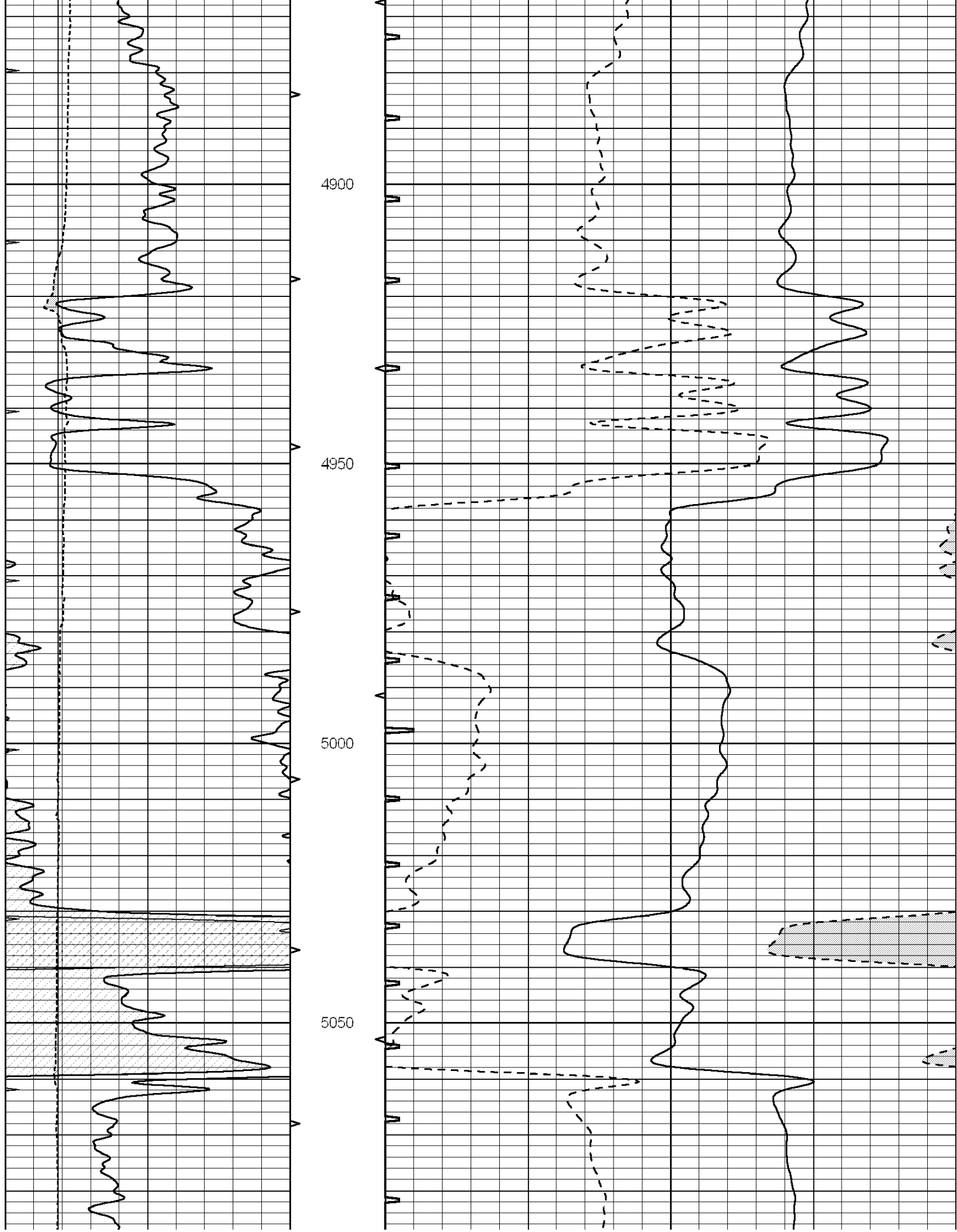
4000
4050
4100
4150
4200

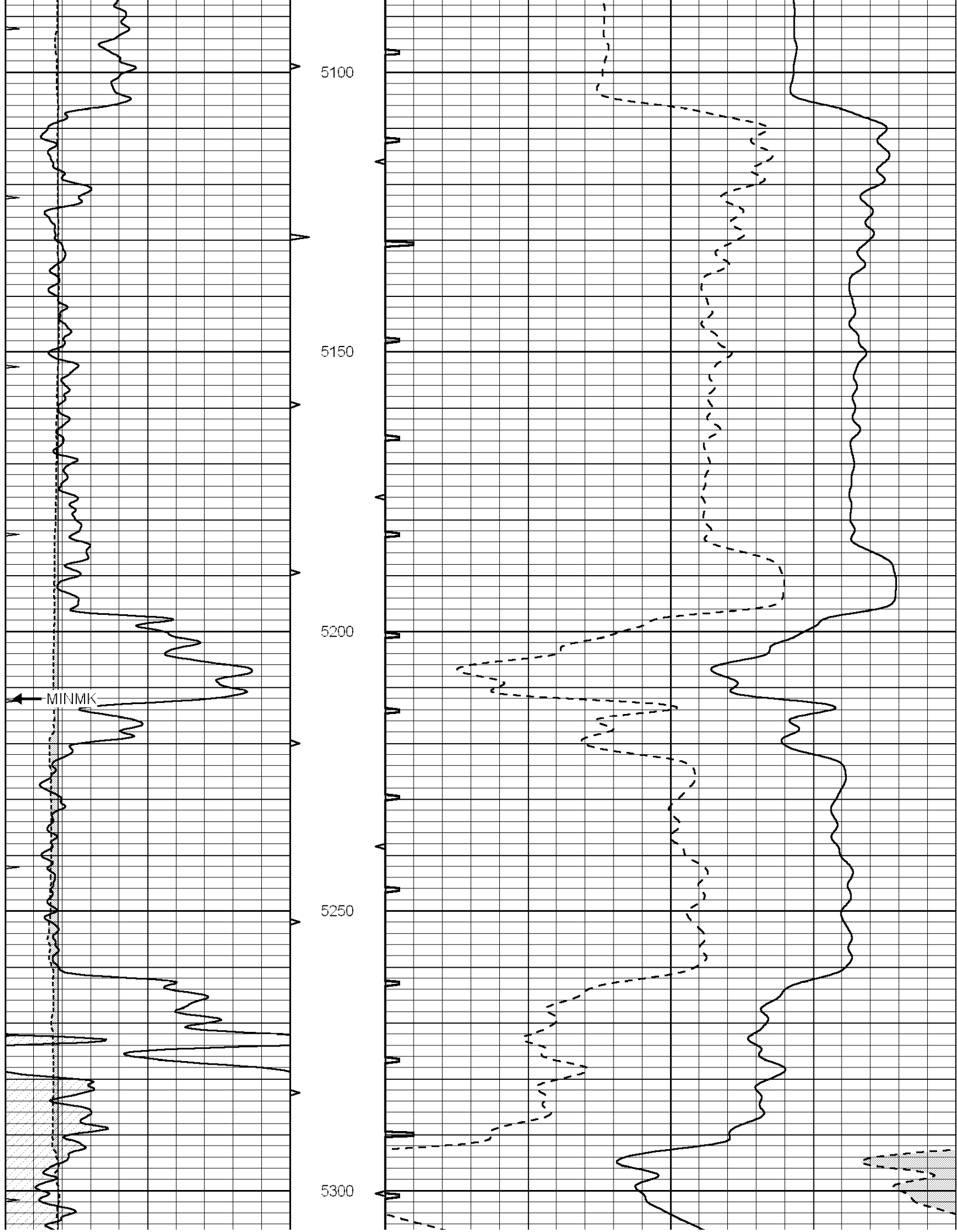


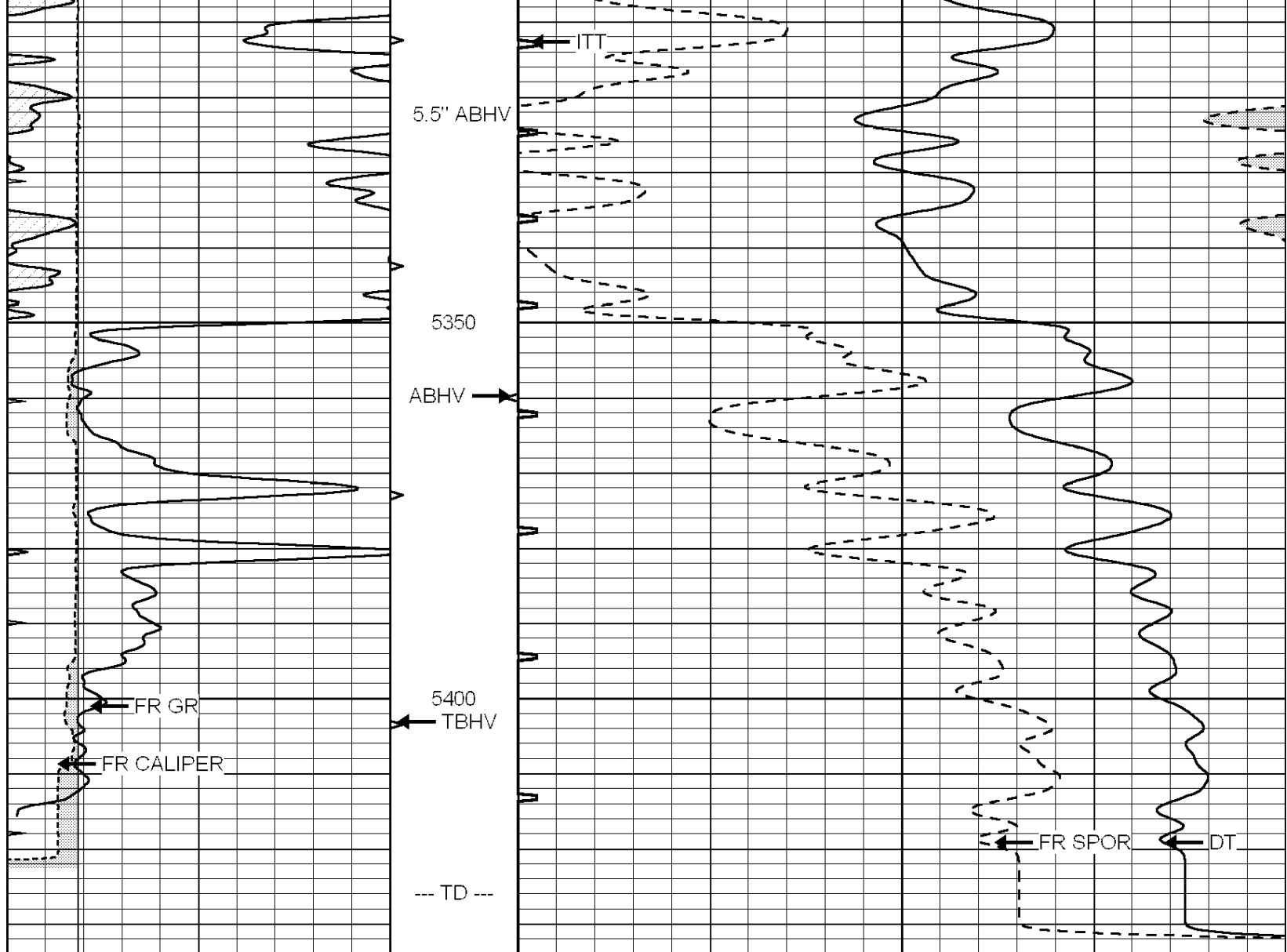












6	DCAL (in)	16	ABHV	140	DELTA TIME (usec/ft)	40
0	GAMMA RAY (GAPI)	150	10 (ft3)	0 30	SONIC POROSITY (pu)	-10
6	MELCAL (in)	16	TBHV	0	ITT (msec)	20
0	MINMK	20	0 (ft3)	10		

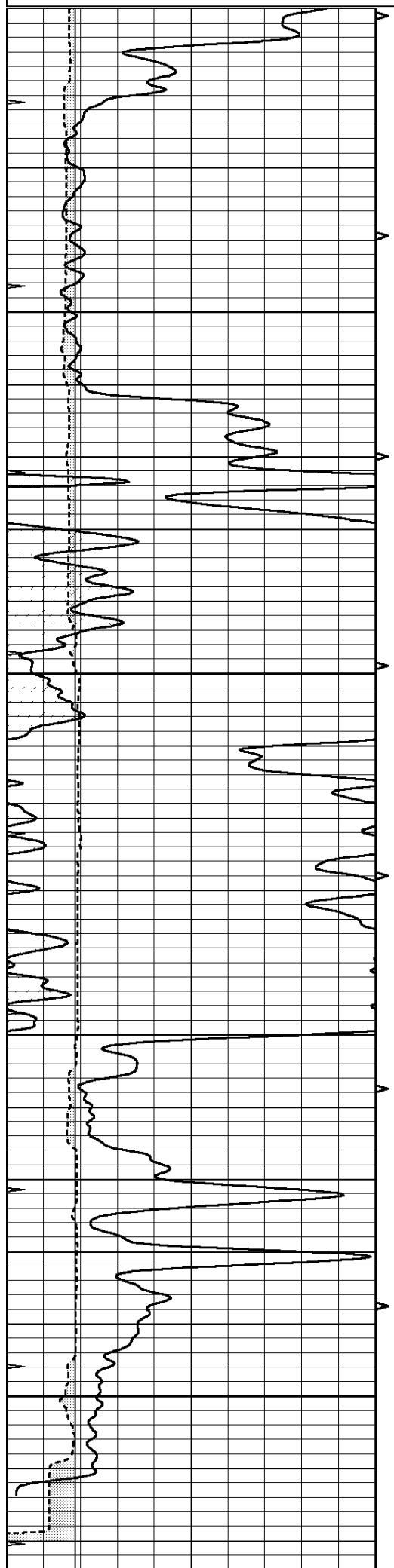


SUPERIOR
Hays,
Kansas

REPEAT SECTION

Database File: 009571pdn.db
 Dataset Pathname: pass4.1A
 Presentation Format: slt
 Dataset Creation: Wed Aug 08 16:28:37 2012
 Charted by: Depth in Feet scaled 1:240

6	DCAL (in)	16	ABHV	140	DELTA TIME (usec/ft)	40
0	GAMMA RAY (GAPI)	150	10 (ft3)	0 30	SONIC POROSITY (pu)	-10
6	MELCAL (in)	16	TBHV	0	ITT (msec)	20
0	MINMK	20	0 (ft3)	10		

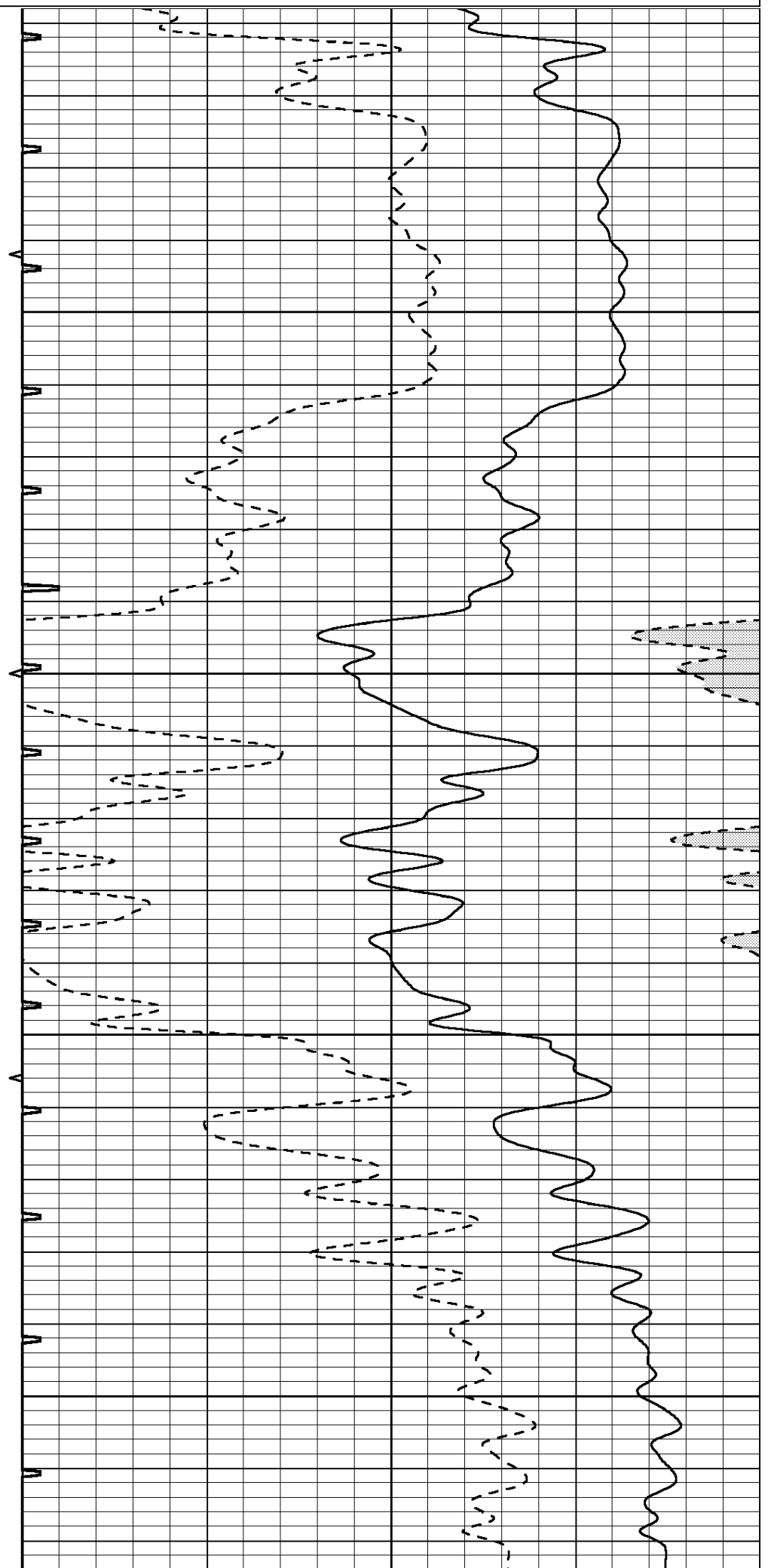


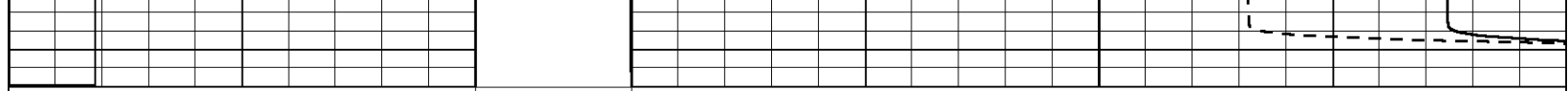
5250

5300

5350

5400





6	DCAL (in)	16	ABHV	140	DELTA TIME (usec/ft)	40
0	GAMMA RAY (GAPI)	150	10 (ft3) 0	30	SONIC POROSITY (pu)	-10
6	MELCAL (in)	16	TBHV	0	ITT (msec)	20
0	MINMK	20	0 (ft3) 10			