



**SUPERIOR  
Hays,  
Kansas**

**MICRO  
LOG**

Company LOTUS OPERATING COMPANY, LLC.  
Well ROSE #3  
Field STRANATHAN  
County BARBER State KANSAS

Company LOTUS OPERATING COMPANY, LLC.  
Well ROSE #3  
Field STRANATHAN  
County BARBER  
State KANSAS

Location: API #: 15-007-23921  
50' S OF  
E/2 - NE - SE  
SEC 25 TWP 34S RGE 12W  
Permanent Datum GROUND LEVEL Elevation 1404  
Log Measured From KELLY BUSHING 13' A.G.L.  
Drilling Measured From KELLY BUSHING  
Other Services  
CDL/CNL/PE  
SONIC/DIL  
Elevation  
K.B. 1417  
D.F.  
G.L. 1404

Date	8-8-12
Run Number	TW0
Depth Driller	5425
Depth Logger	5426
Bottom Logged Interval	5409
Top Log Interval	3600
Casing Driller	1140
Casing Logger	1140
Bit Size	7.875
Type Fluid in Hole	CHEMICAL MUD
Density / Viscosity	9.5 / 48
pH / Fluid Loss	9.0 / 11.2
Source of Sample	FLOWLINE
Rim @ Meas. Temp	0.75 @ 86F
Rmf @ Meas. Temp	0.56 @ 86F
Rmc @ Meas. Temp	0.90 @ 86F
Source of Rmf / Rmc	MEASURED
Rim @ BHT	.500 @ 129F
Time Circulation Stopped	3 HOURS
Time Logger on Bottom	11:45 A.M.
Maximum Recorded Temperature	129F
Equipment Number	860
Location	HAYS, KS.
Recorded By	RUPP
Witnessed By	TIM HELLMAN

<<< Fold Here >>>

All interpretations are opinions based on inferences from electrical or other measurements and we cannot and do not guarantee the accuracy or correctness of any interpretation, and we shall not, except in the case of gross or willful negligence on our part, be liable or responsible for any loss, costs, damages, or expenses incurred or sustained by anyone resulting from any interpretation made by any of our officers, agents or employees. These interpretations are also subject to our general terms and conditions set out in our current Price Schedule.

Comments

SUPERIOR WELL SERVICES  
785-628-6395  
THANK YOU FOR YOUR BUSINESS  
DIRECTIONS: MEDICINE LODGE, S TO HAWKINS RD., 1/2S, W INTO.



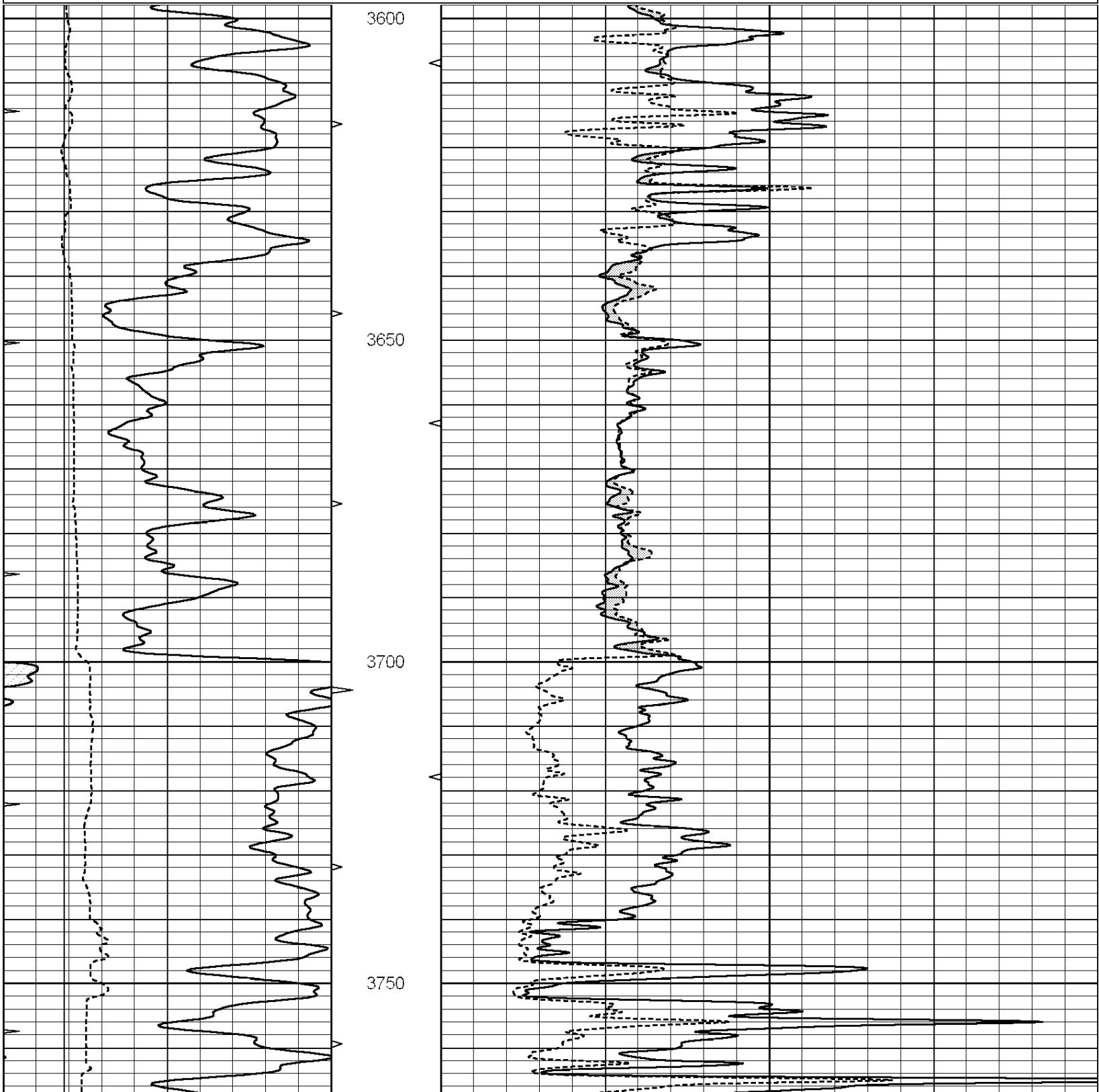
**SUPERIOR  
Hays,  
Kansas**

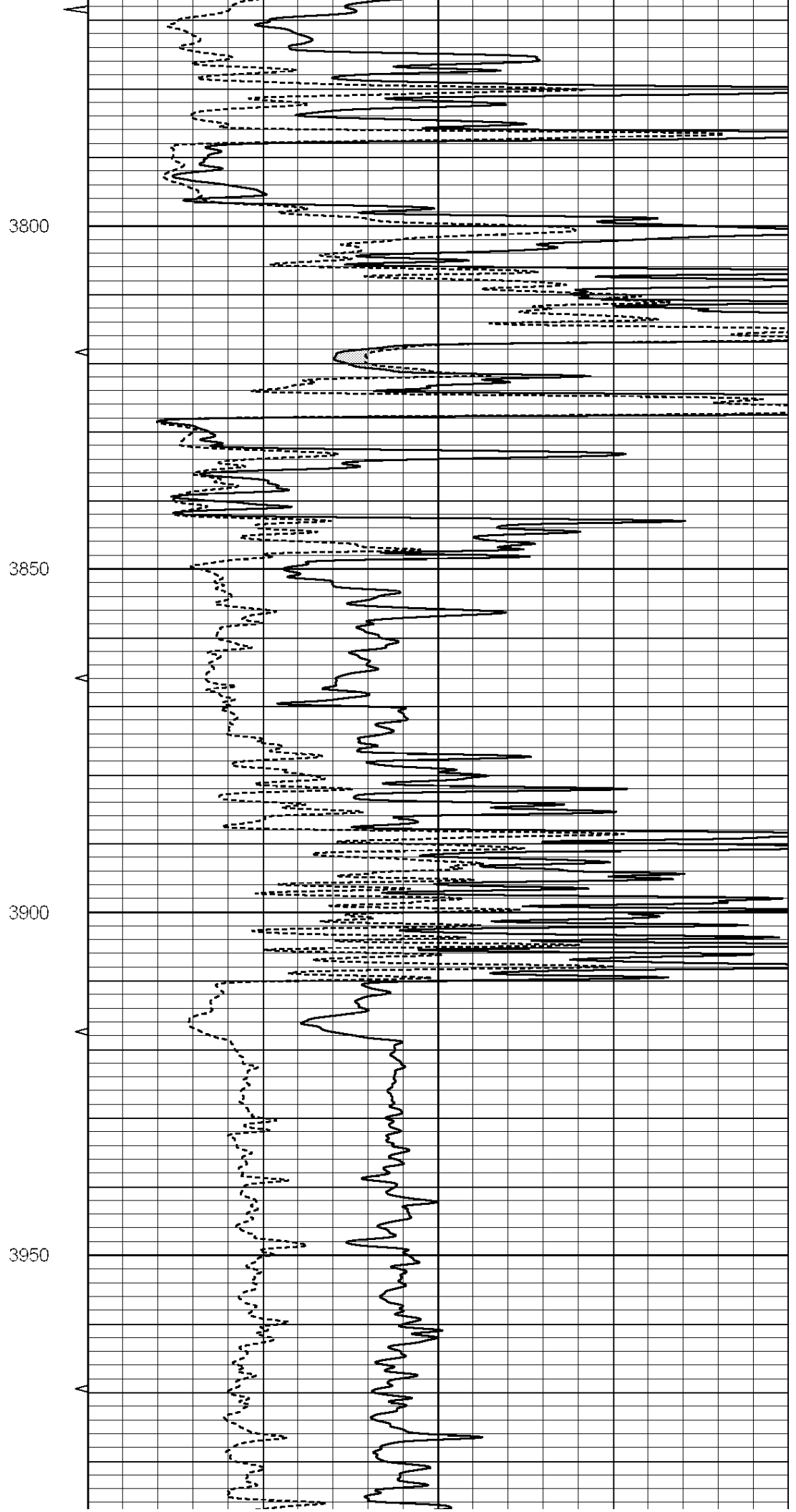
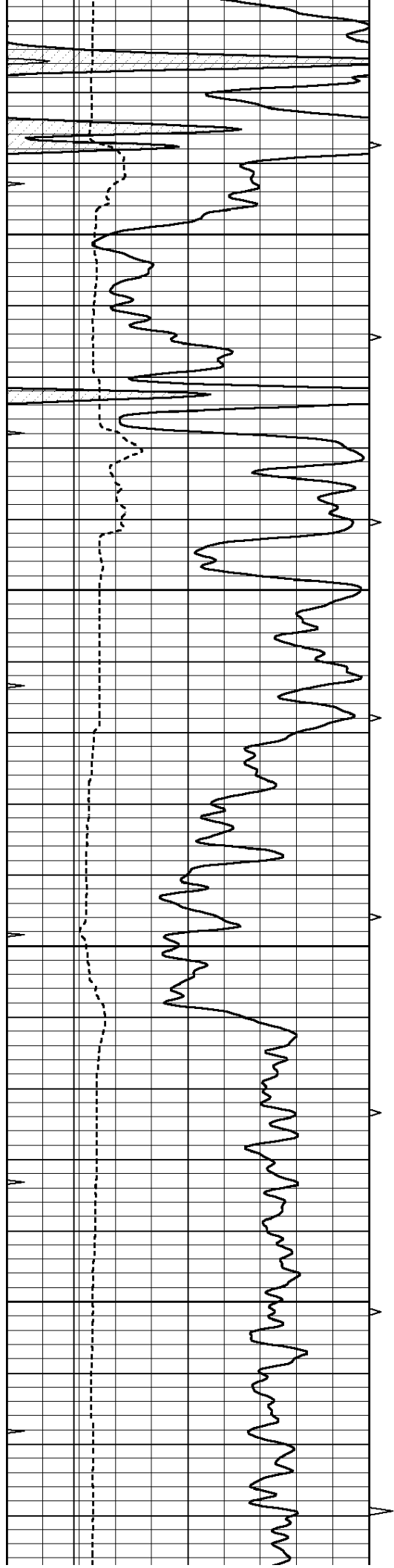
**MAIN SECTION**

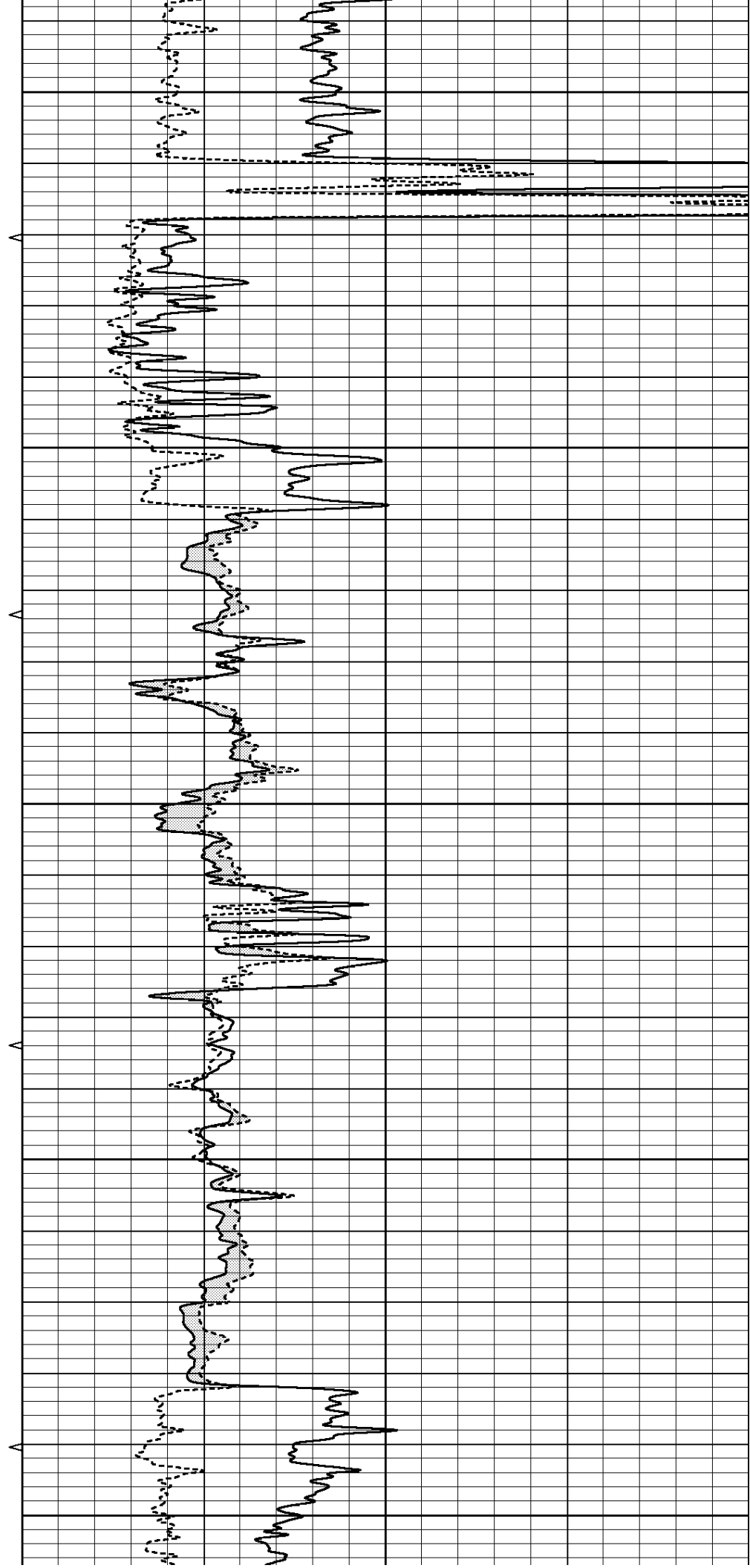
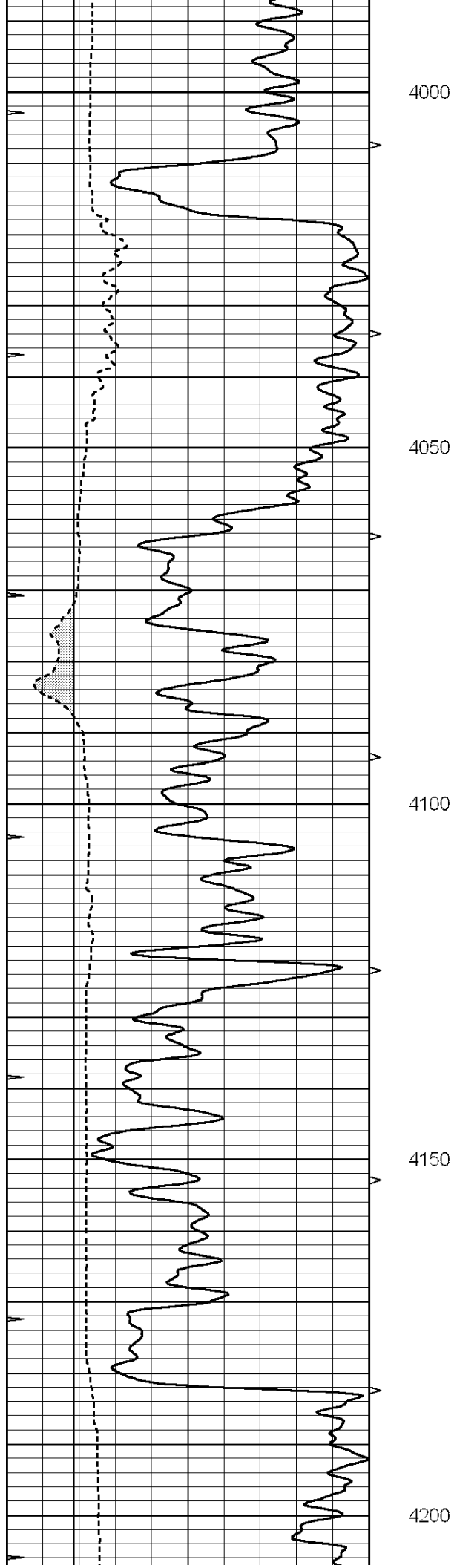
Database File: 009571pdn.db  
 Dataset Pathname: pass5.1  
 Presentation Format: micro  
 Dataset Creation: Wed Aug 08 16:21:30 2012  
 Charted by: Depth in Feet scaled 1:240

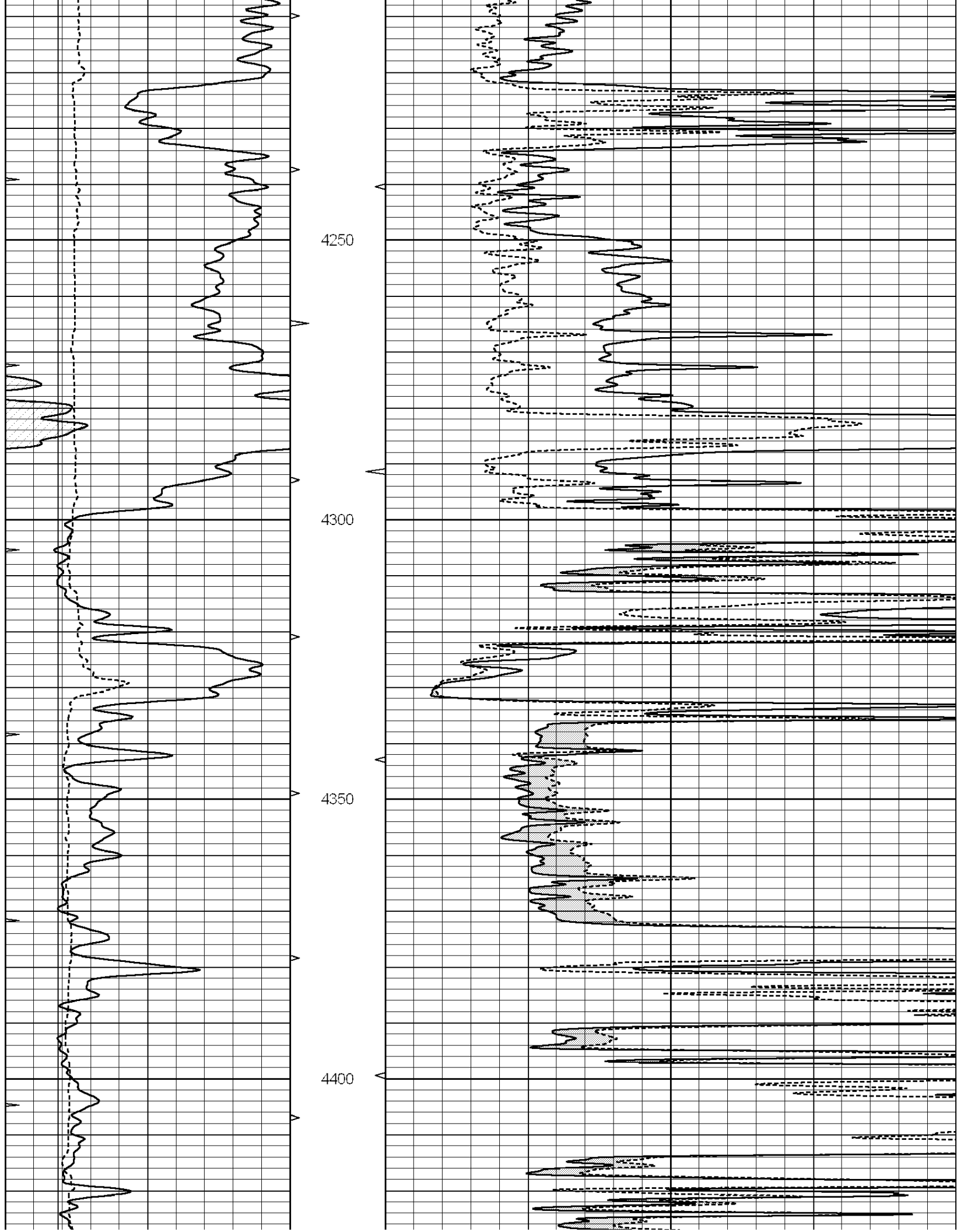
0	GAMMA RAY (GAPI)	150
6	CALIPER (in)	16
6	MELCAL (in)	16
0	MINMK	20

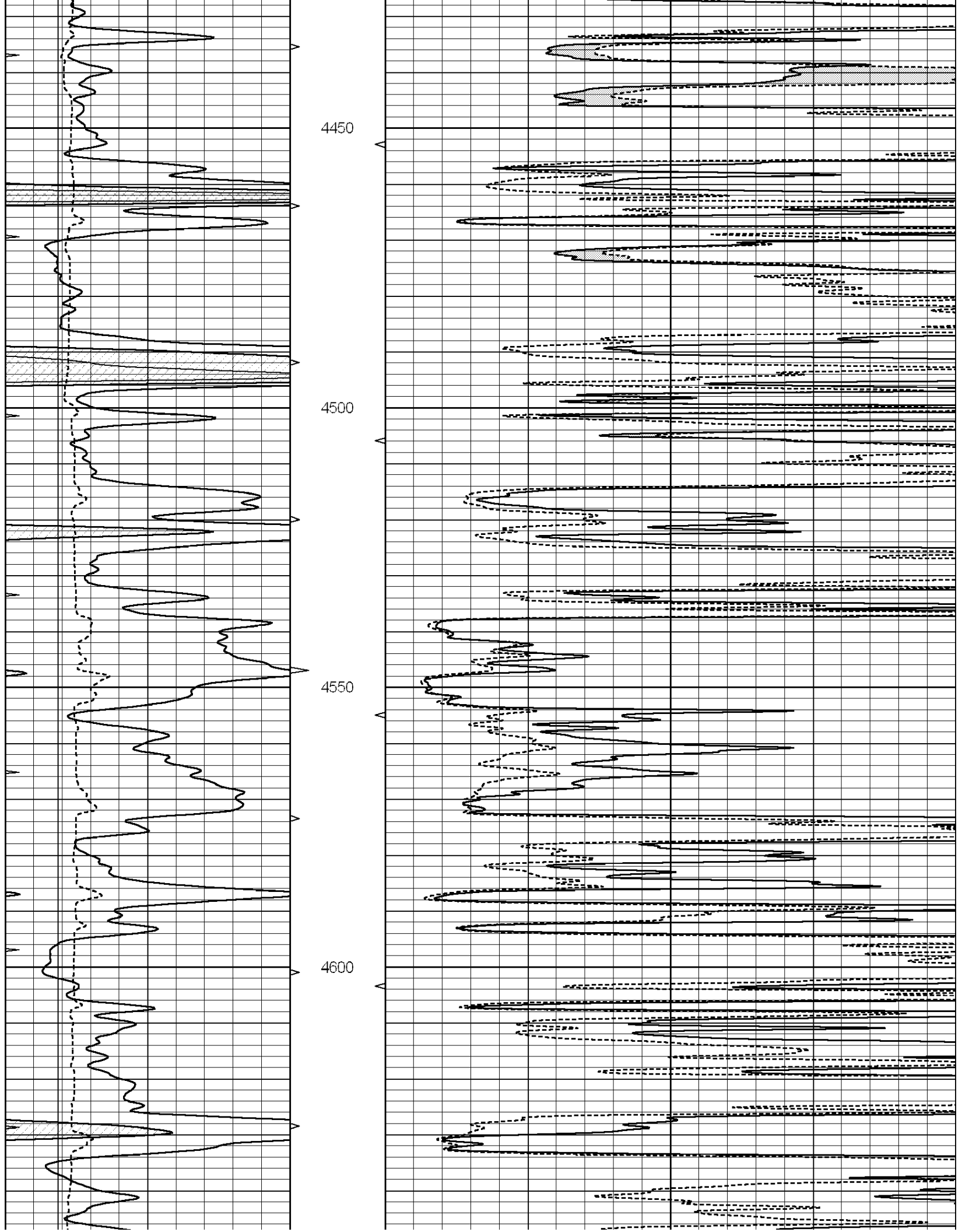
0	MEL1.5 (Ohm-m)	40
0	MEL2.0 (Ohm-m)	40

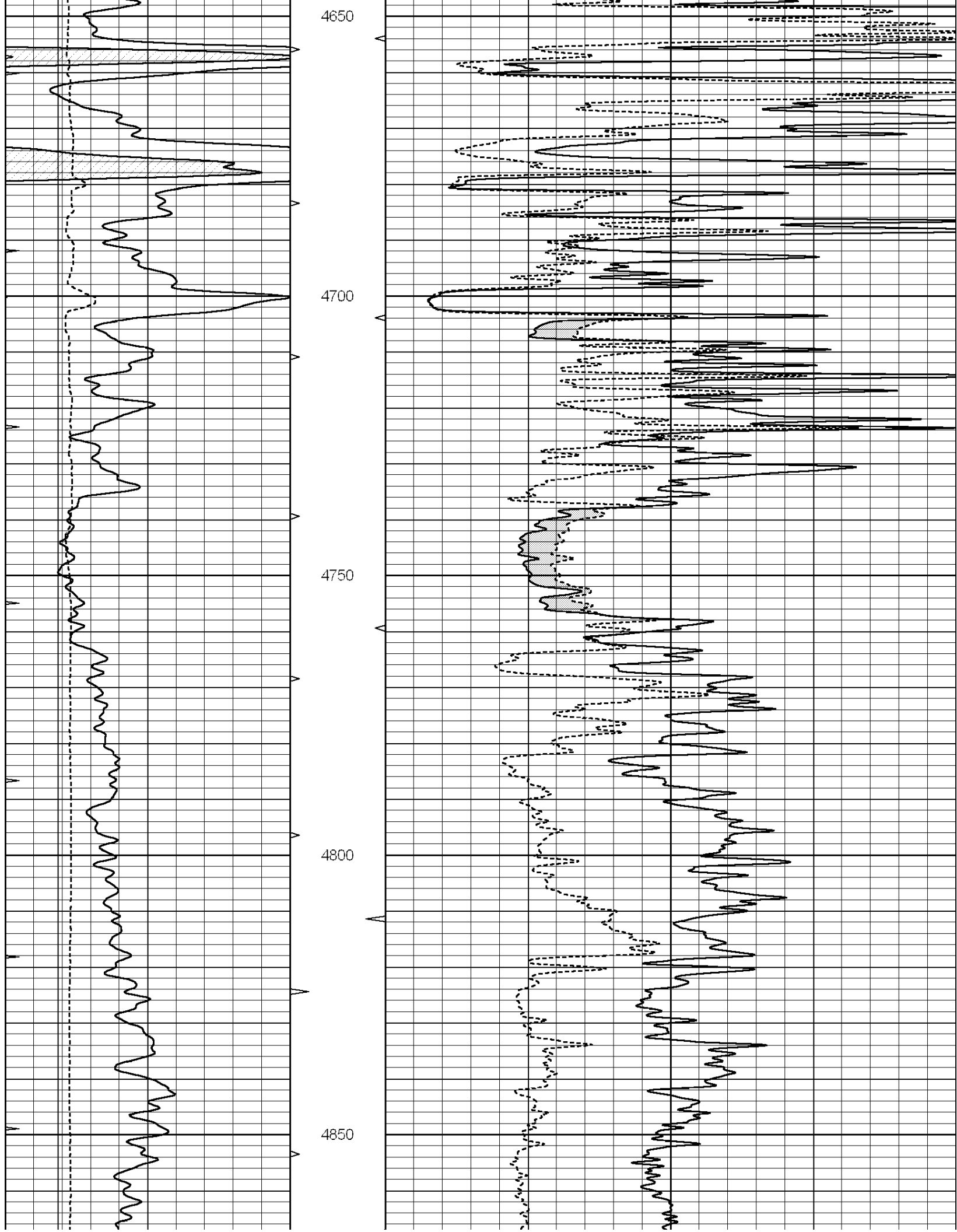


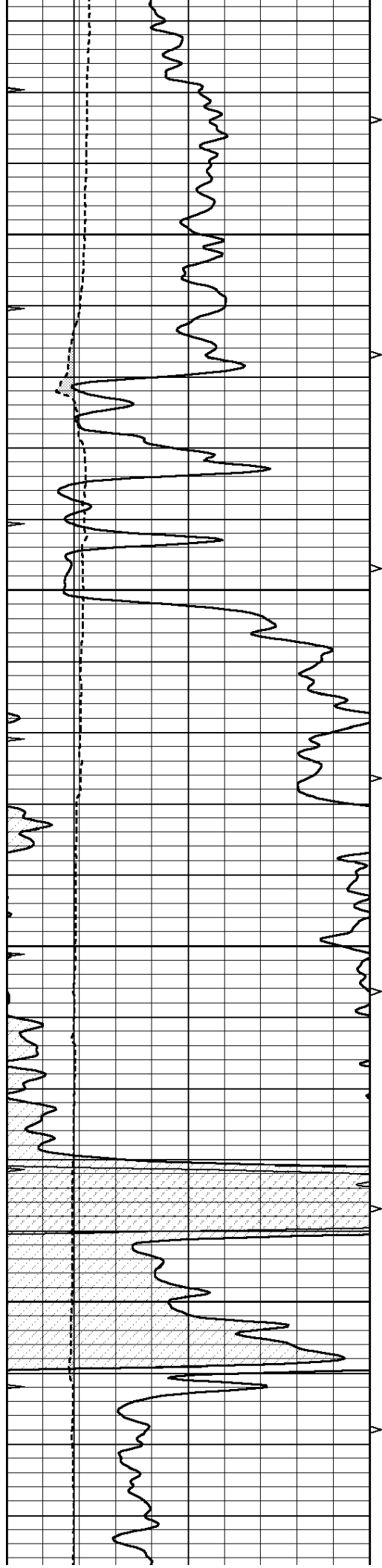










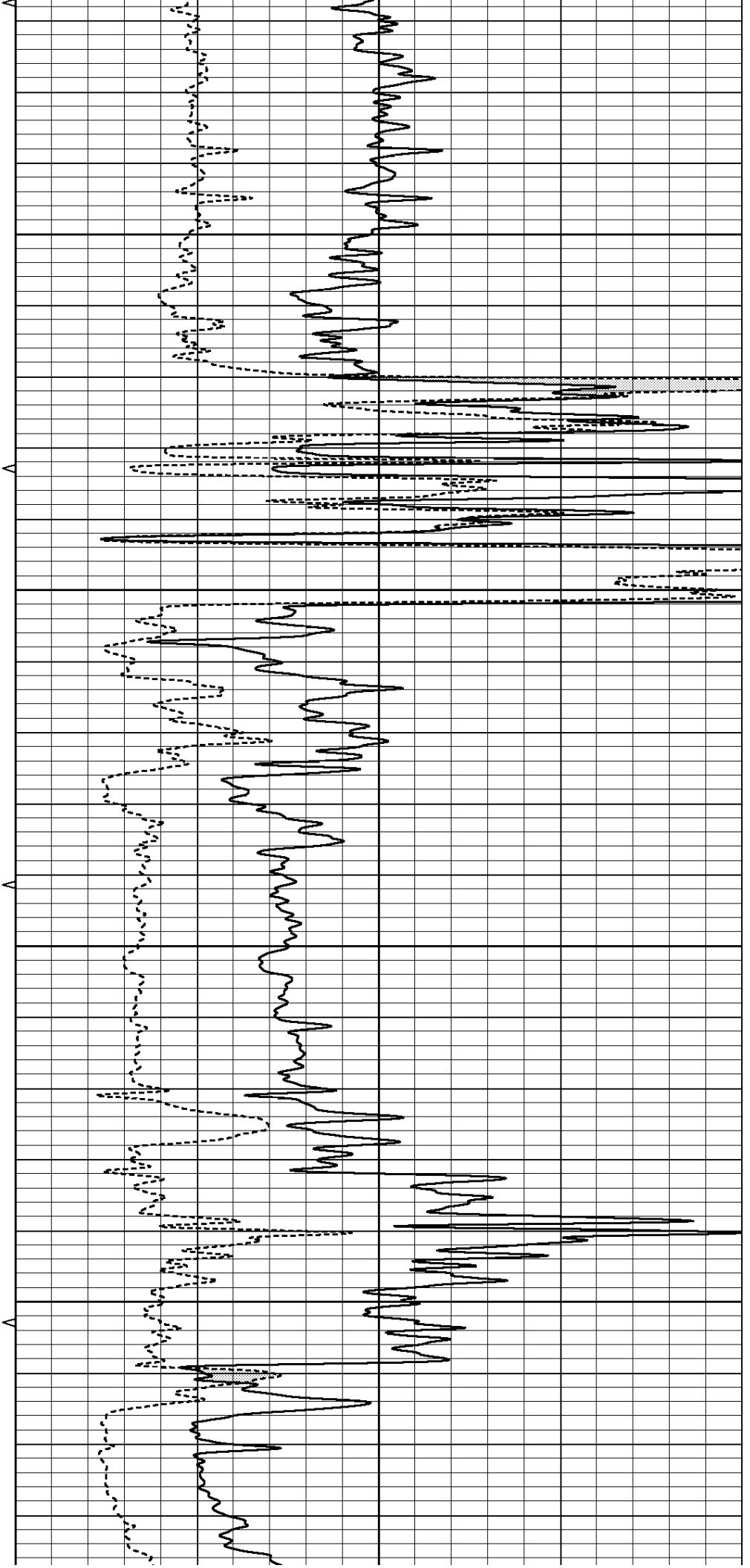


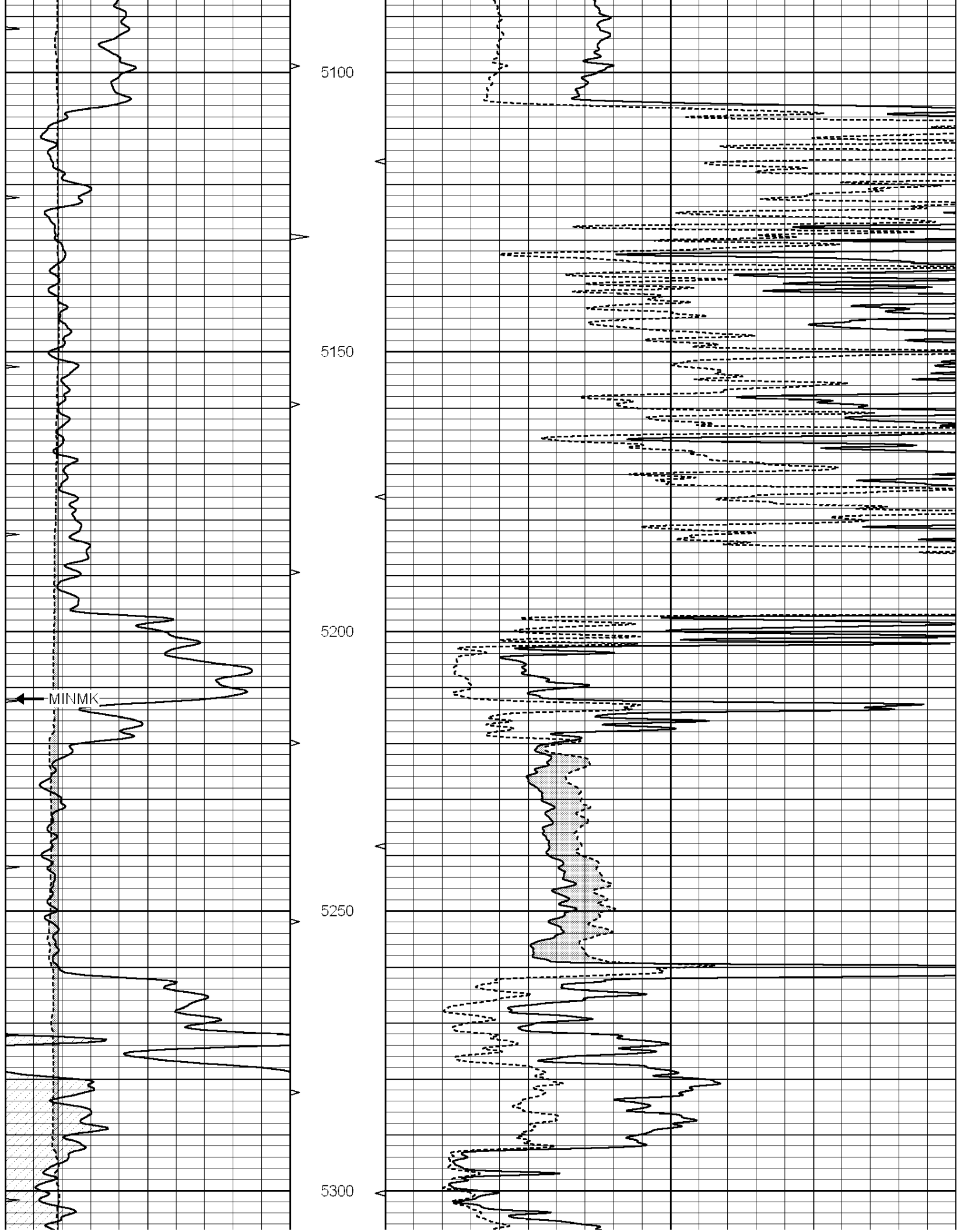
4900

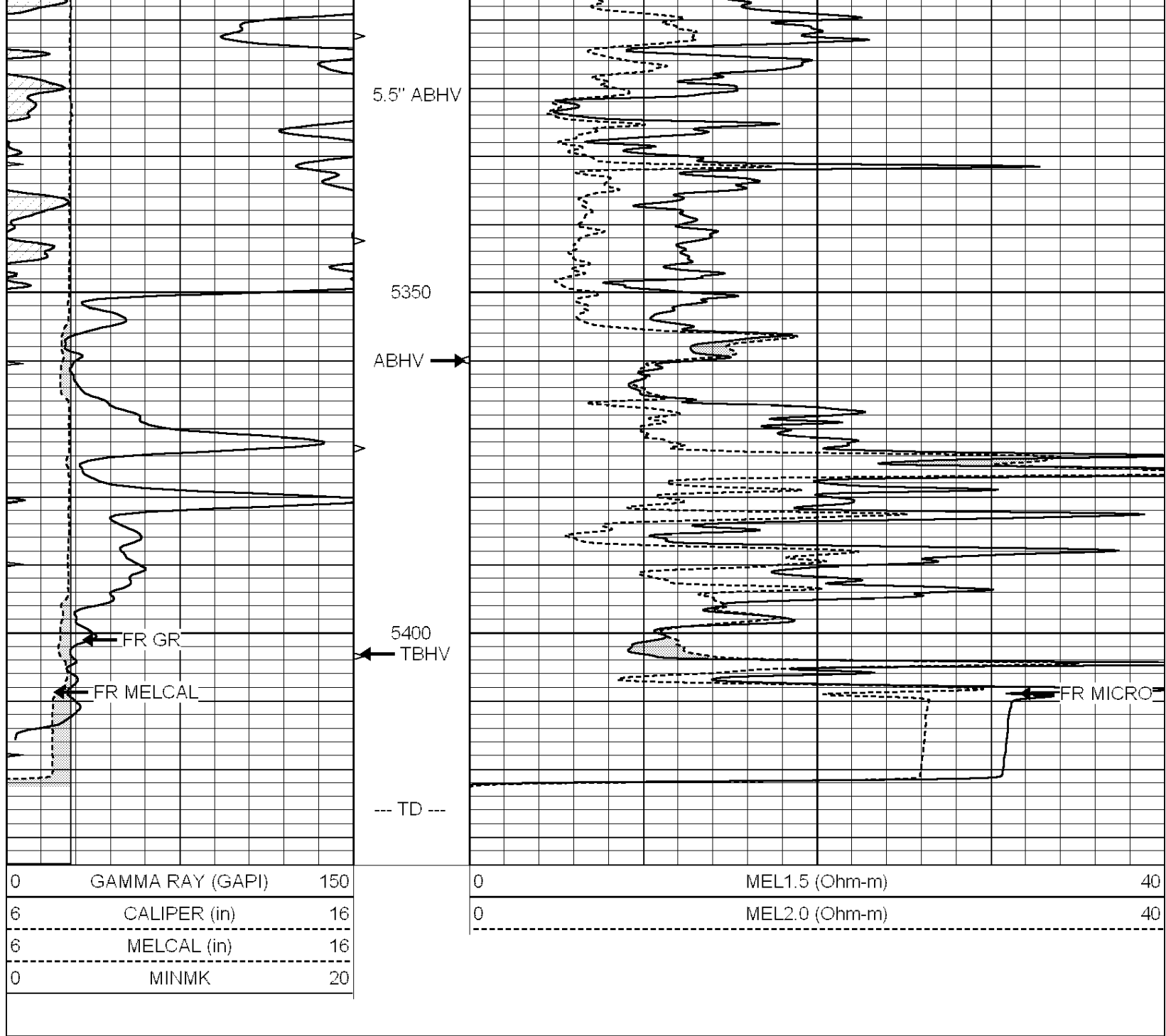
4950

5000

5050







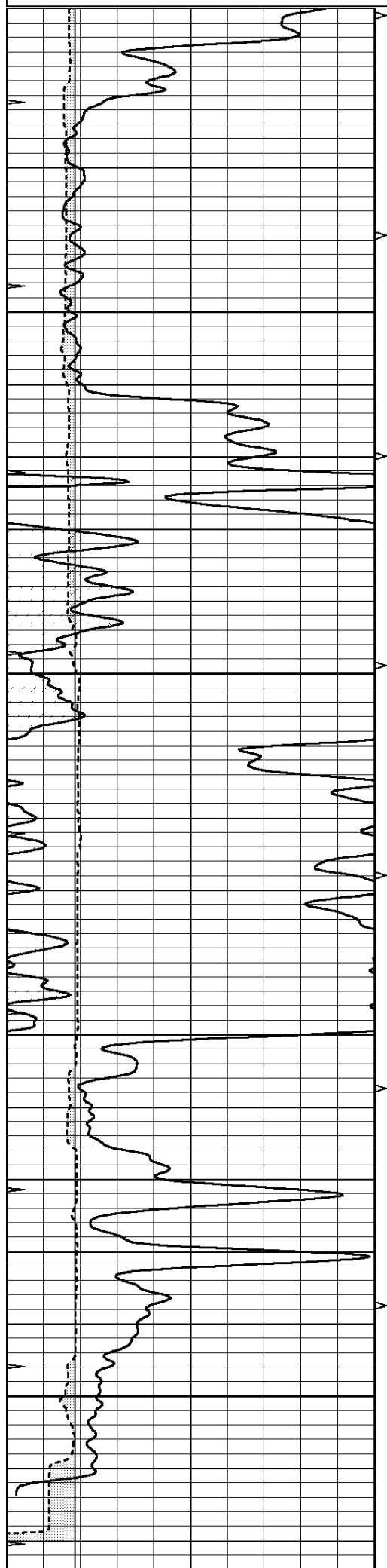
SUPERIOR  
Hays,  
Kansas

# REPEAT SECTION

Database File: 009571pdn.db  
 Dataset Pathname: pass4.1A  
 Presentation Format: micro  
 Dataset Creation: Wed Aug 08 16:28:37 2012  
 Charted by: Depth in Feet scaled 1:240

0	GAMMA RAY (GAPI)	150
6	CALIPER (in)	16
6	MELCAL (in)	16
0	MINMK	20

0	MEL1.5 (Ohm-m)	40
0	MEL2.0 (Ohm-m)	40



5250

5300

5350

5400

