



Pioneer Energy Services

Microresistivity Log

API No.	15-007-23,906-00-00	
Company	Chieftain Oil Company, Inc.	
Well	Palmer No. 2	
Field	Mcguire - Goemann South	
County	Barber	State
		Kansas
Location	1876' FNL & 330' FWL	
Sec: 3	Twp: 33 S	Rge: 10 W
Permanent Datum	Ground Level	Elevation 1473
Log Measured From	Kelly Bushing	12 Ft. Above Perm. Datum
Drilling Measured From	Kelly Bushing	
		K.B. 1485
		D.F. 1473
		G.L. 1473
		Elevation
		Other Services CNL/CDL DIL

Date	8/3/2012
Run Number	Two
Depth Driller	5014
Depth Logger	5016
Bottom Logged Interval	5015
Top Log Interval	3300
Casing Driller	8.625 @ 311
Casing Logger	305
Bit Size	7.875
Type Fluid in Hole	Chemical
Salinity, ppm CL	7200
Density / Viscosity	9.2 53
pH / Fluid Loss	10.0 11.0
Source of Sample	Flowline
Rm @ Meas. Temp	.75 @ 82
Rmf @ Meas. Temp	.56 @ 82
Rmc @ Meas. Temp	1.01 @ 82
Source of Rmf / Rmc	Charts
Rm @ BHT	.49 @ 126
Operating Rig Time	4 1/2 Hours
Max Rec. Temp. F	126
Equipment Number	17
Location	Hays
Recorded By	D. Martin
Witnessed By	David Barker

<<< Fold Here >>>

All interpretations are opinions based on inferences from electrical or other measurements and we cannot and do not guarantee the accuracy or correctness of any interpretation, and we shall not, except in the case of gross or willful negligence on our part, be liable or responsible for any loss, costs, damages, or expenses incurred or sustained by anyone resulting from any interpretation made by any of our officers, agents or employees. These interpretations are also subject to our general terms and conditions set out in our current Price Schedule.

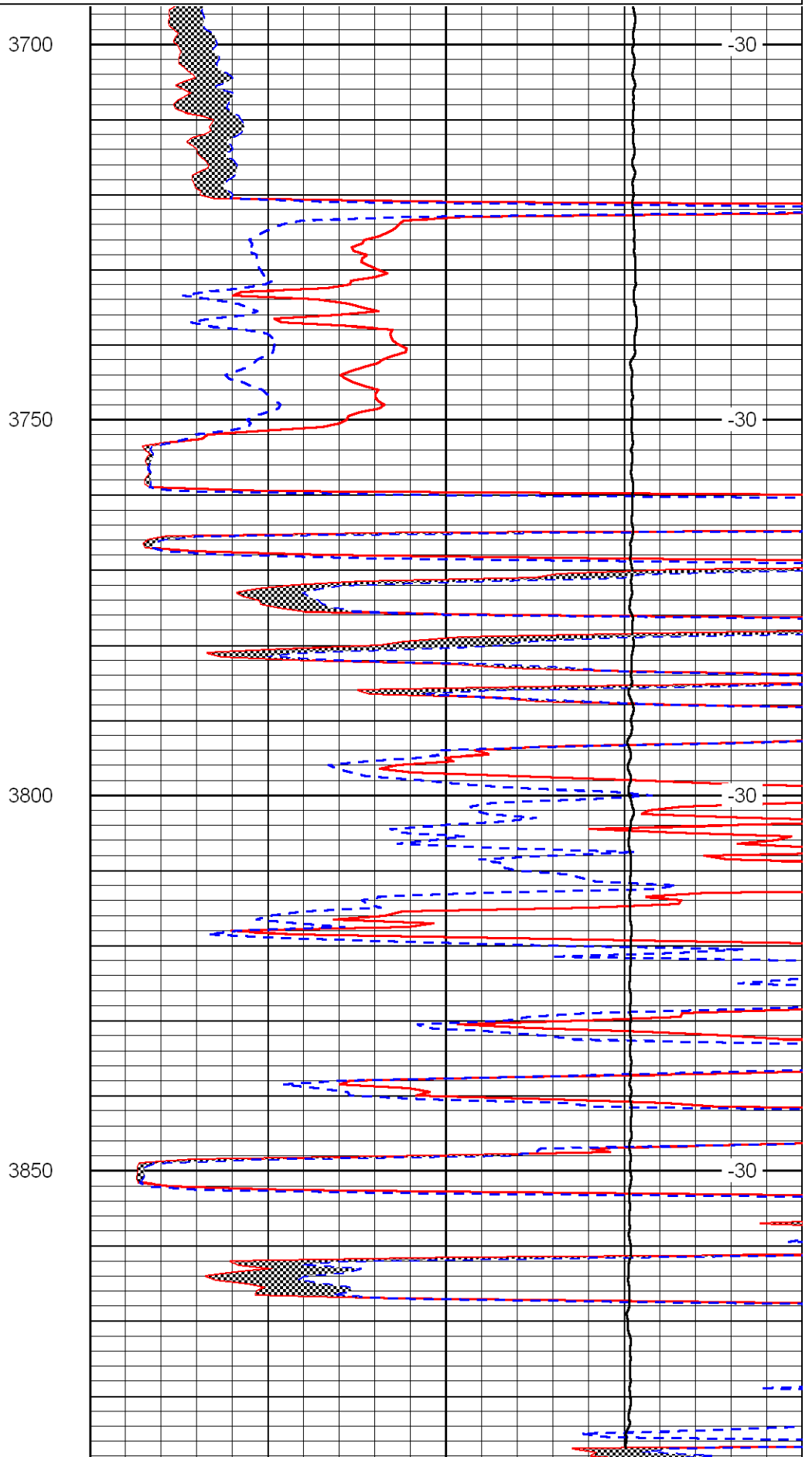
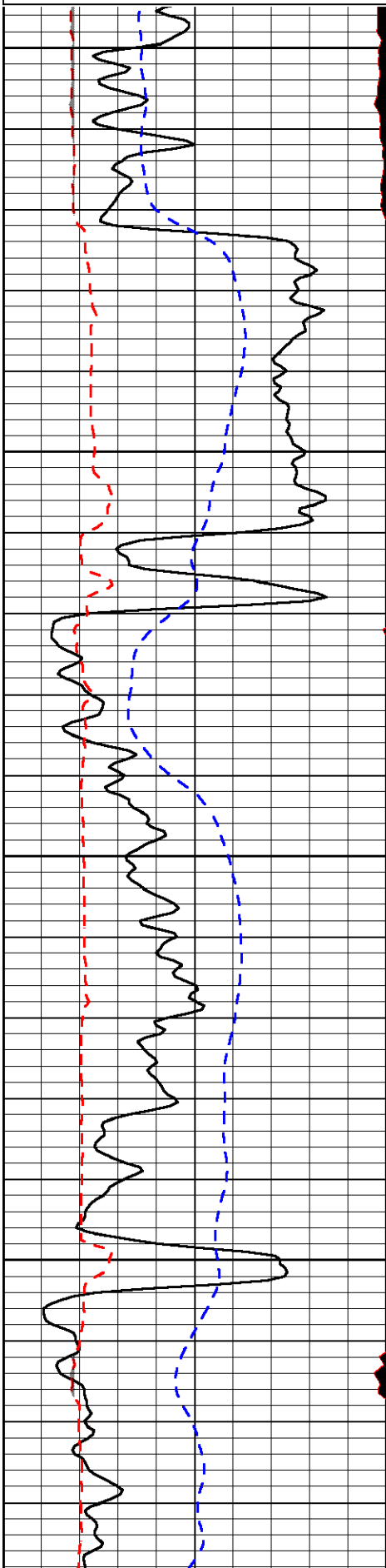
Comments

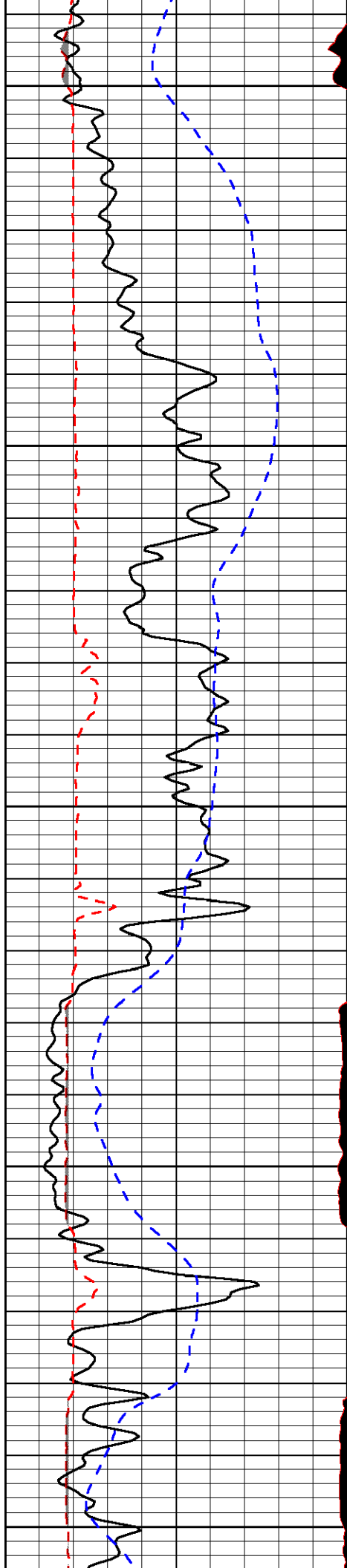
Thank you for using Log-Tech, Inc.
 (785) 625-3858
 Sharon, KS
 E Edge of Town to Tri-City Blacktop,
 2 S, E Into

Database File: chihd.db
 Dataset Pathname: DIL/chistk
 Presentation Format: micro
 Dataset Creation: Fri Aug 03 13:02:26 2012
 Charted by: Depth in Feet scaled 1:240

0	Gamma Ray	150
6	MCAL (GAPI)	16
2.875	Mud Cake (GAPI)	7.875
-200	SP	0

0	Micro Inverse 1 X 1	40
0	Micro Normal 2"	40
10000	Line Weight	0
		LSPD





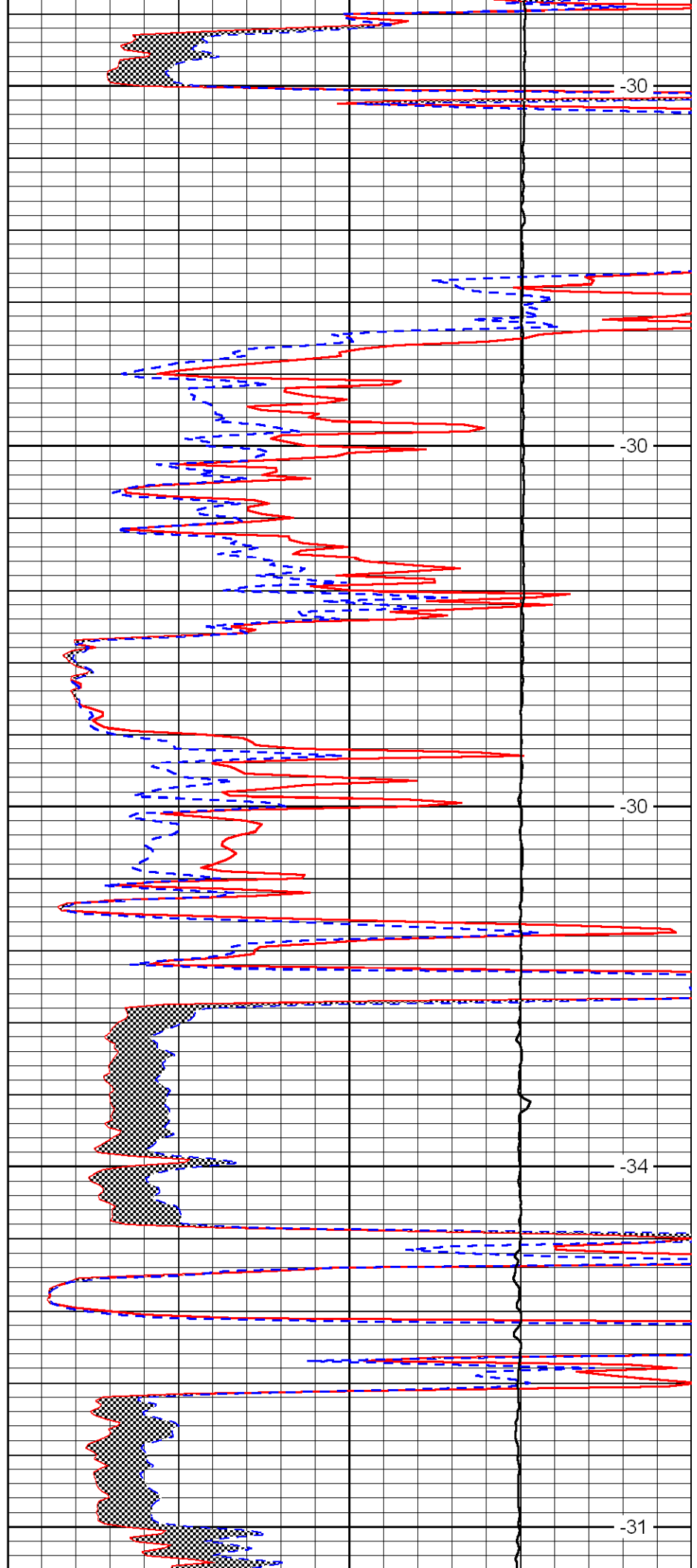
3900

3950

4000

4050

4100



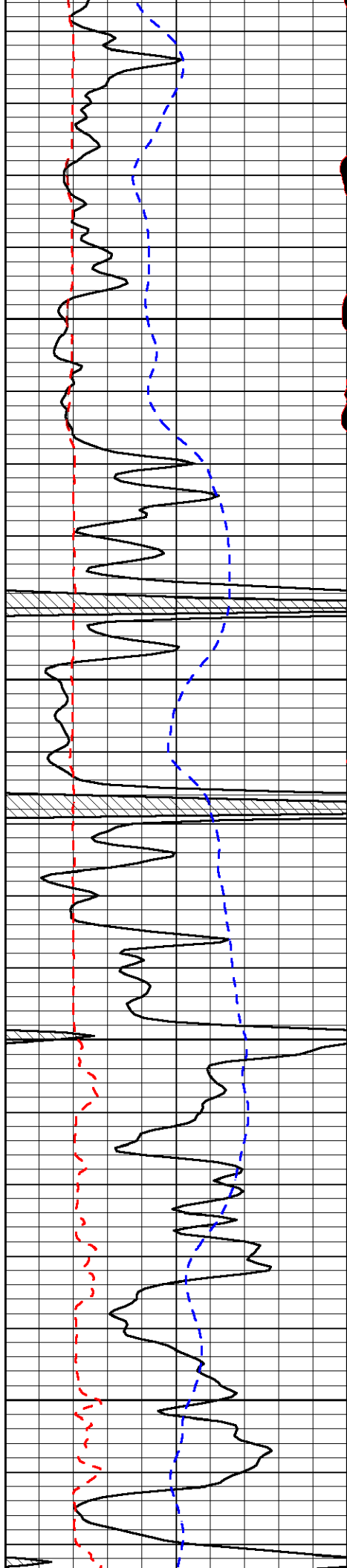
-30

-30

-30

-34

-31

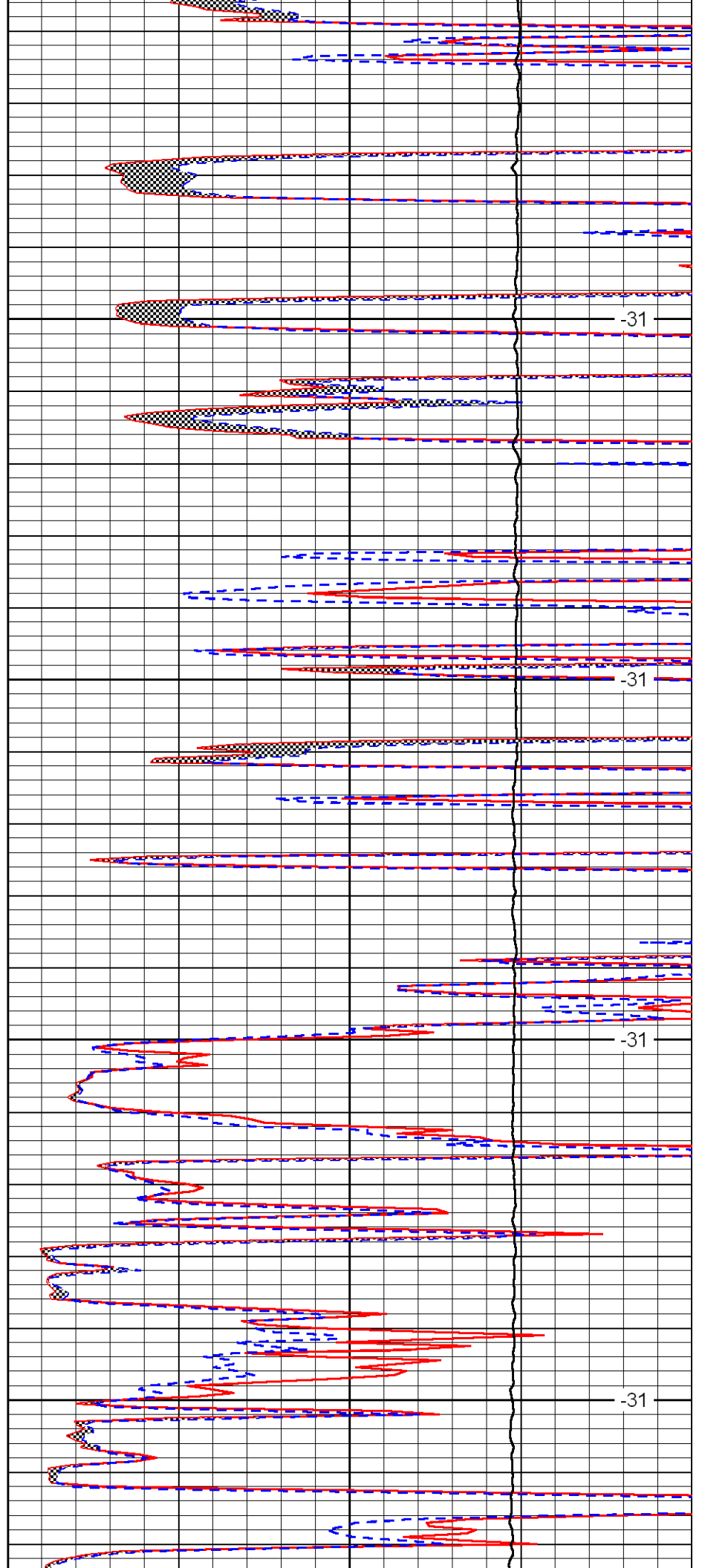


4150

4200

4250

4300

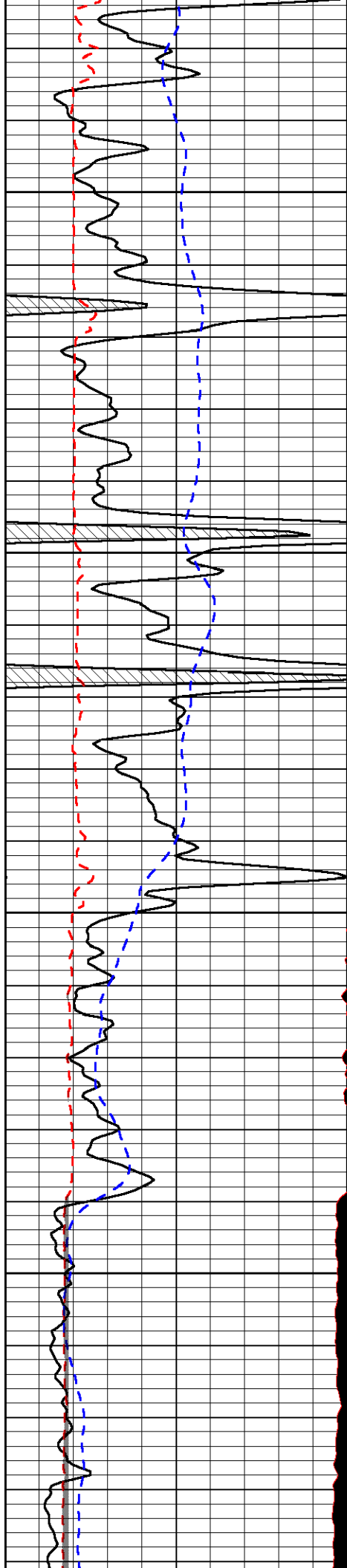


-31

-31

-31

-31

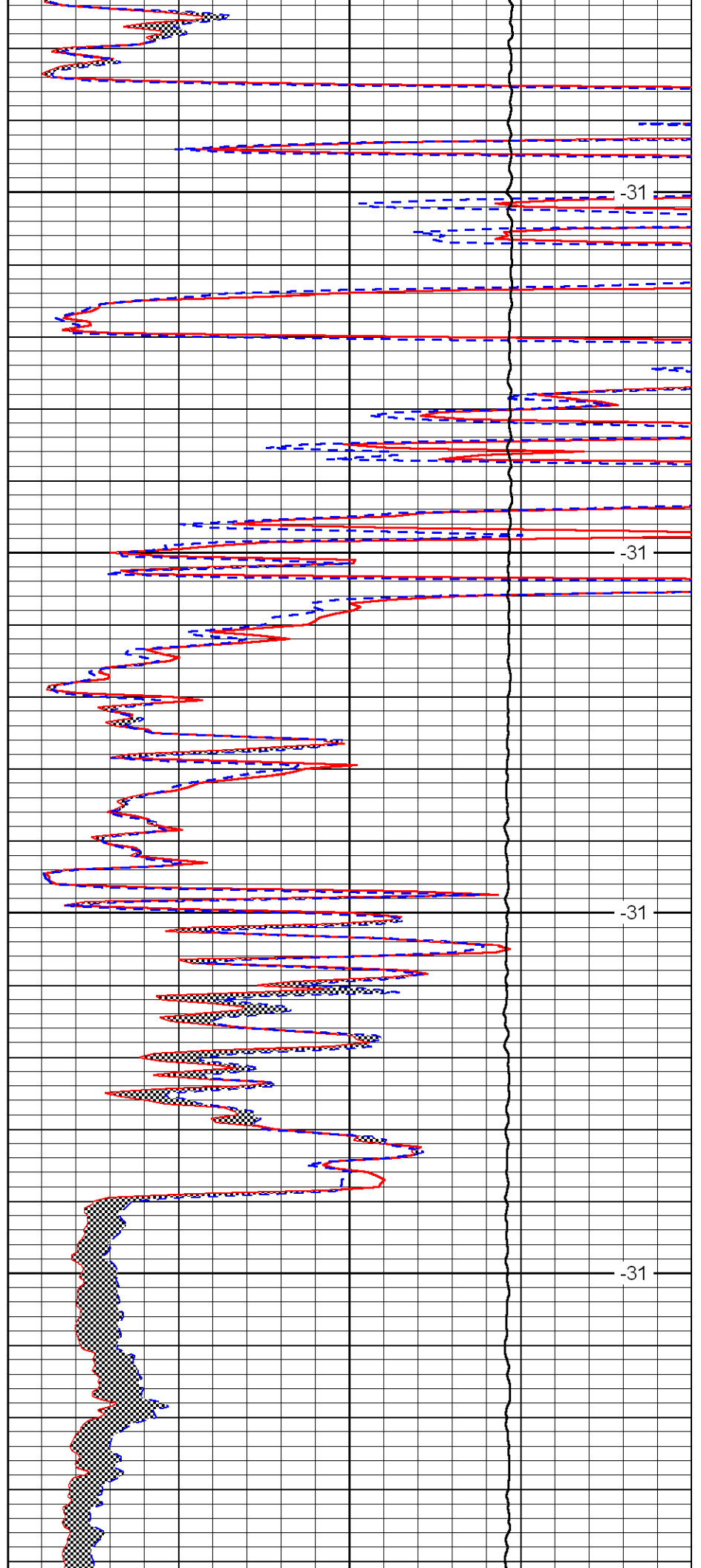


4350

4400

4450

4500

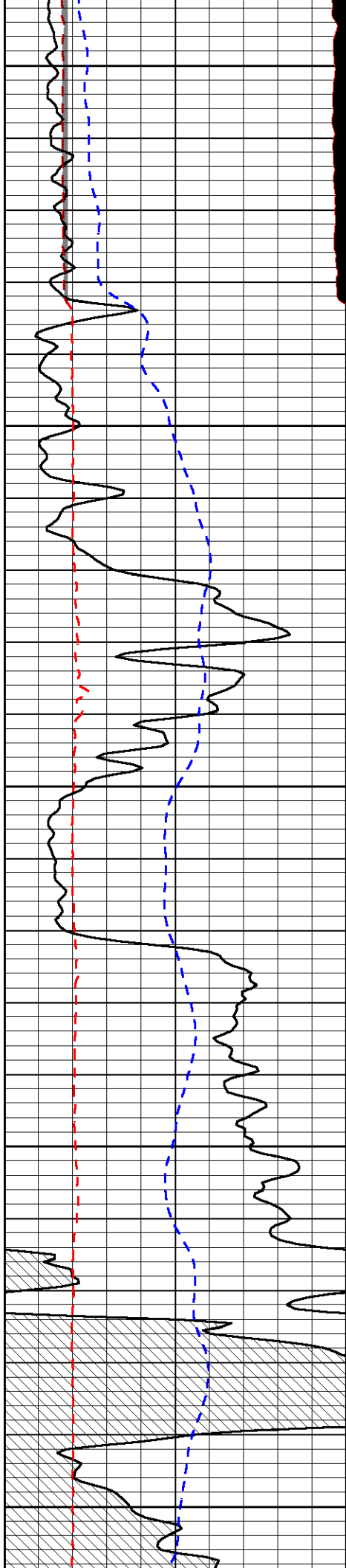


-31

-31

-31

-31



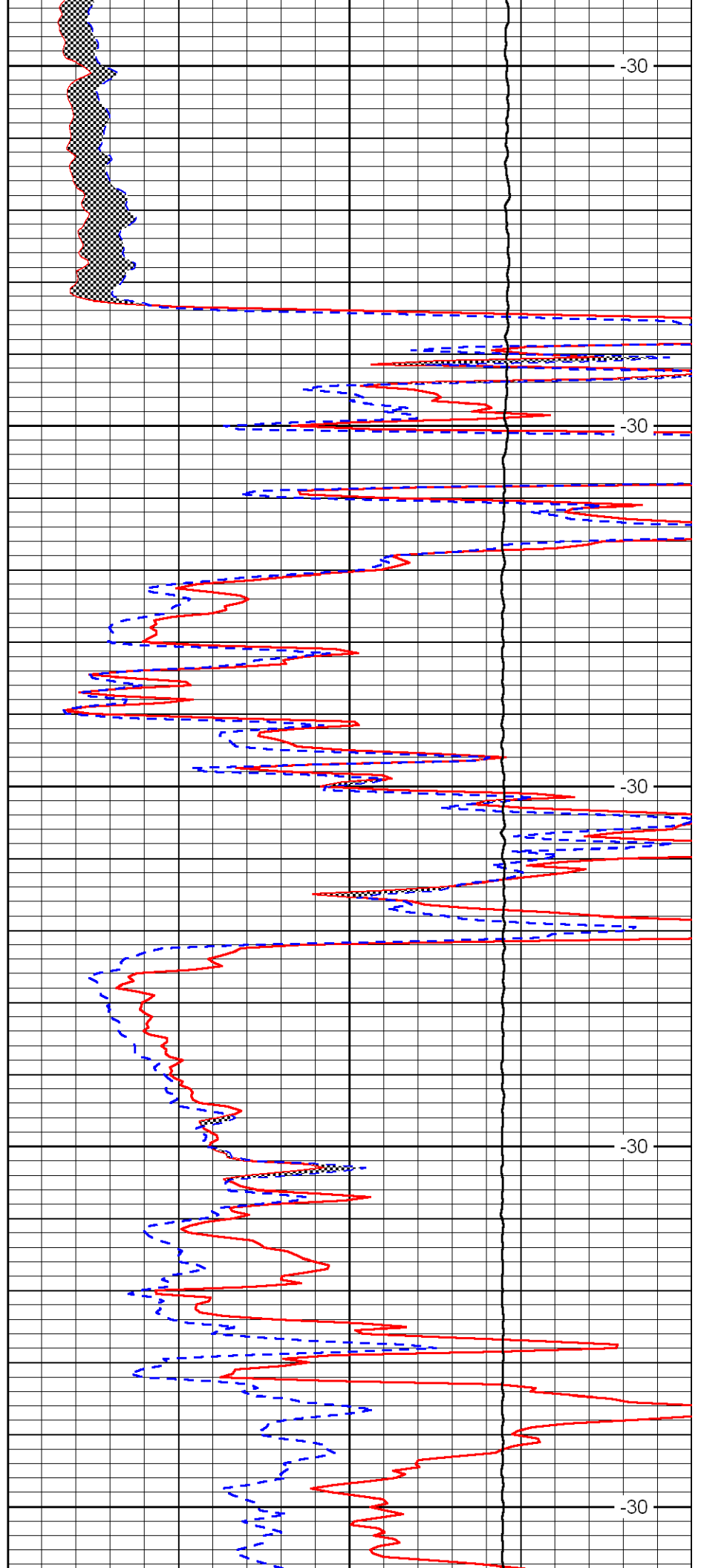
4550

4600

4650

4700

4750



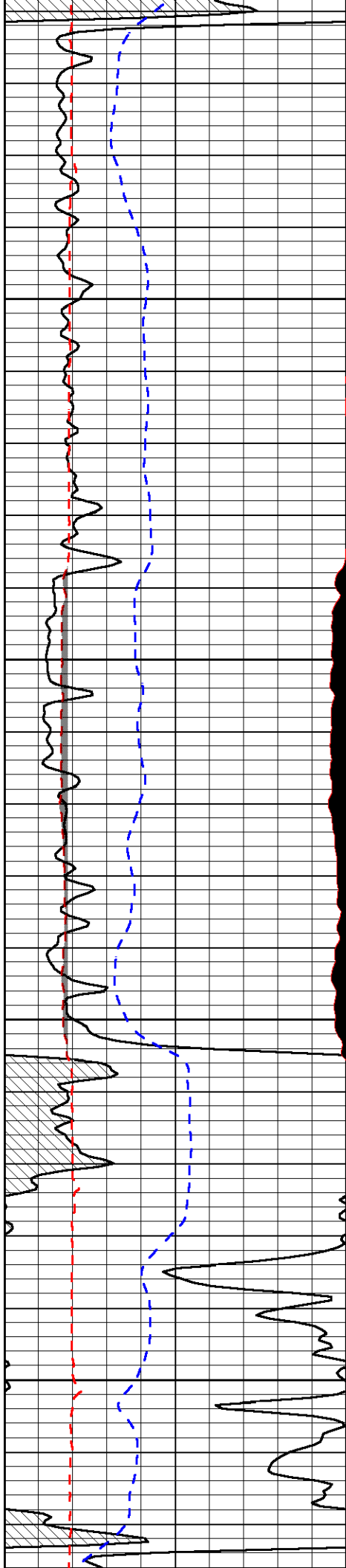
-30

-30

-30

-30

-30

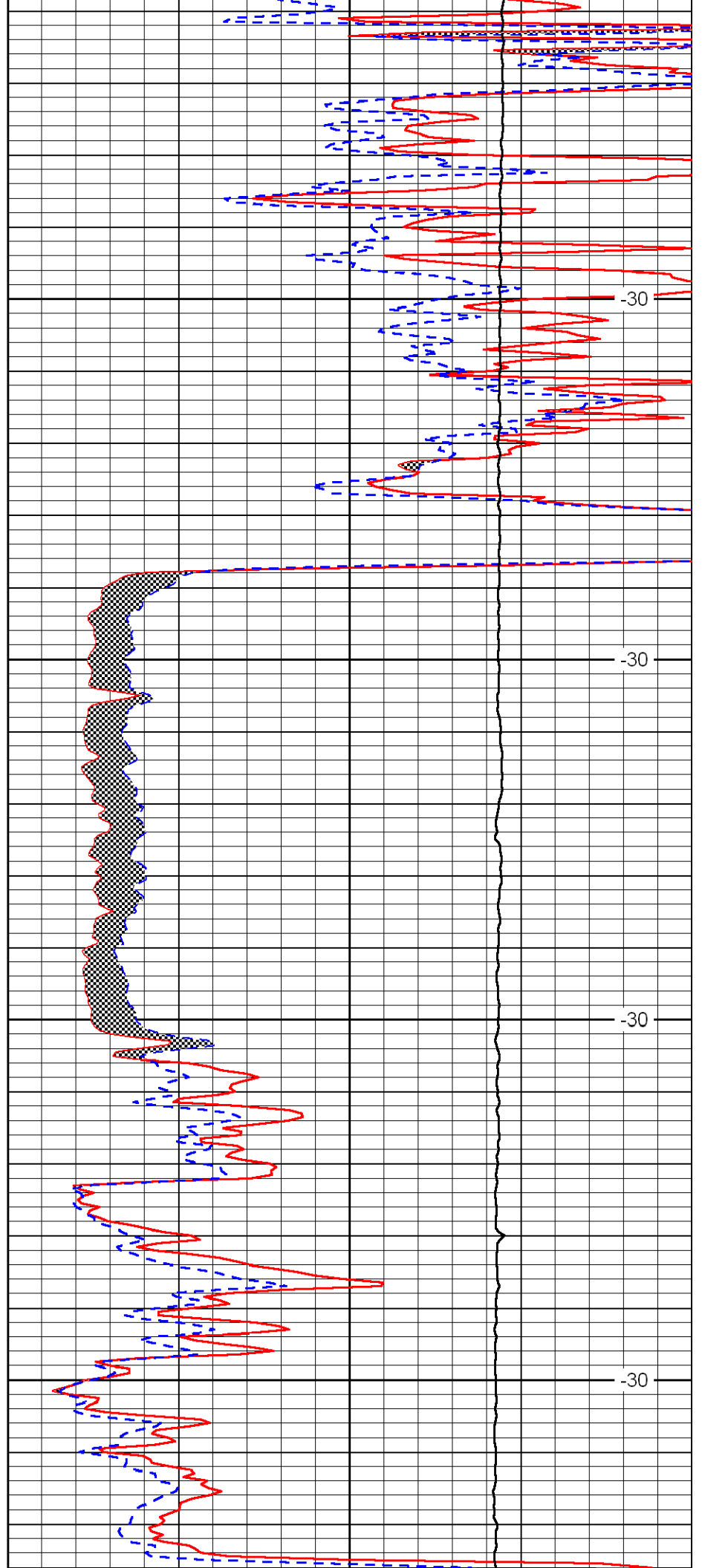


4800

4850

4900

4950

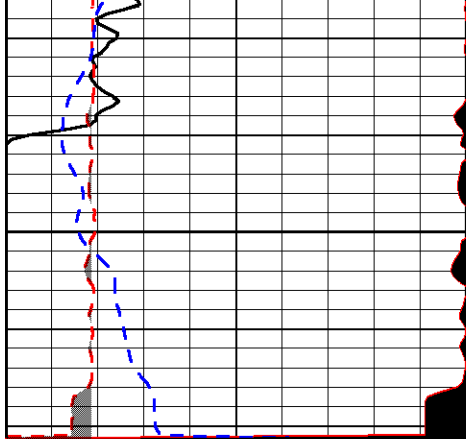


-30

-30

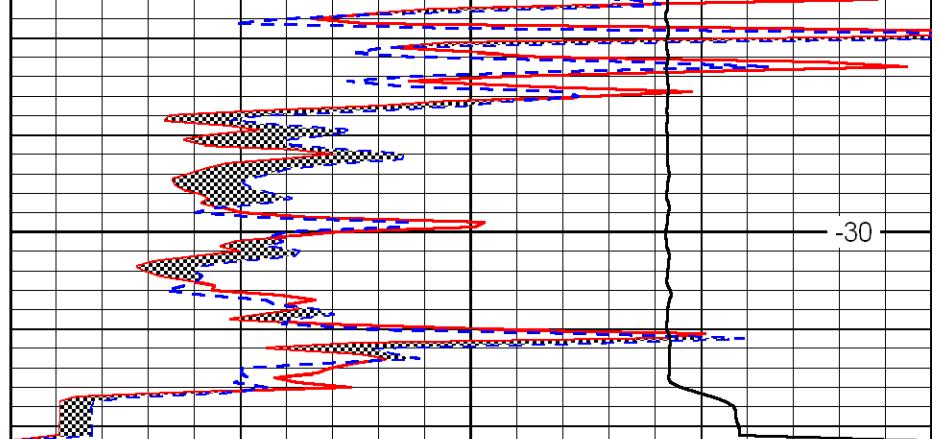
-30

-30



0	Gamma Ray	150
6	MCAL (GAPI)	16
2.875	Mud Cake (GAPI)	7.875
-200	SP	0

5000



0	Micro Inverse 1 X 1	40
0	Micro Normal 2''	40
10000	Line Weight	0

-30

LSPD