



Pioneer Energy Services

Dual Compensated Porosity Log

API No. 15-007-23,906-00-00

Company **Chieftain Oil Company, Inc.**
 Well **Palmer No. 2**
 Field **Mcguire - Goemann South**
 County **Barber** State **Kansas**

Location **1876' FNL & 330' FWL**

Sec: **3** Twp: **33 S** Rge: **10 W**

Other Services **DIL/MEL**

Permanent Datum **Ground Level** Elevation **1473**
 Log Measured From **Kelly Bushing** 12 Ft. Above Perm. Datum
 Drilling Measured From **Kelly Bushing**

K.B. 1485
 D.F. 1473
 G.L. 1473

Date **8/3/2012**

Run Number **One**

Type Log **CNL / CDL**

Depth Driller **5014**

Depth Logger **5016**

Bottom Logged Interval **4995**

Top Logged Interval **3300**

Type Fluid In Hole **Chemical**

Salinity, PPM CL **7200**

Density **9.2**

Level **Full**

Max. Rec. Temp. F **126**

Operating Rig Time **4 1/2 Hours**

Equipment -- Location **17 Hays**

Recorded By **D. Martin**

Witnessed By **David Barker**

Borehole Record		Casing Record				
Run No	Bit From	To	Size	Wgt. 23#	From	To
One	12.25	00	311	8.625	00	311
Two	7.875	311	TD			

<<< Fold Here >>>

All interpretations are opinions based on inferences from electrical or other measurements and we cannot and do not guarantee the accuracy or correctness of any interpretation, and we shall not, except in the case of gross or willful negligence on our part, be liable or responsible for any loss, costs, damages, or expenses incurred or sustained by anyone resulting from any interpretation made by any of our officers, agents or employees. These interpretations are also subject to our general terms and conditions set out in our current Price Schedule.

Comments

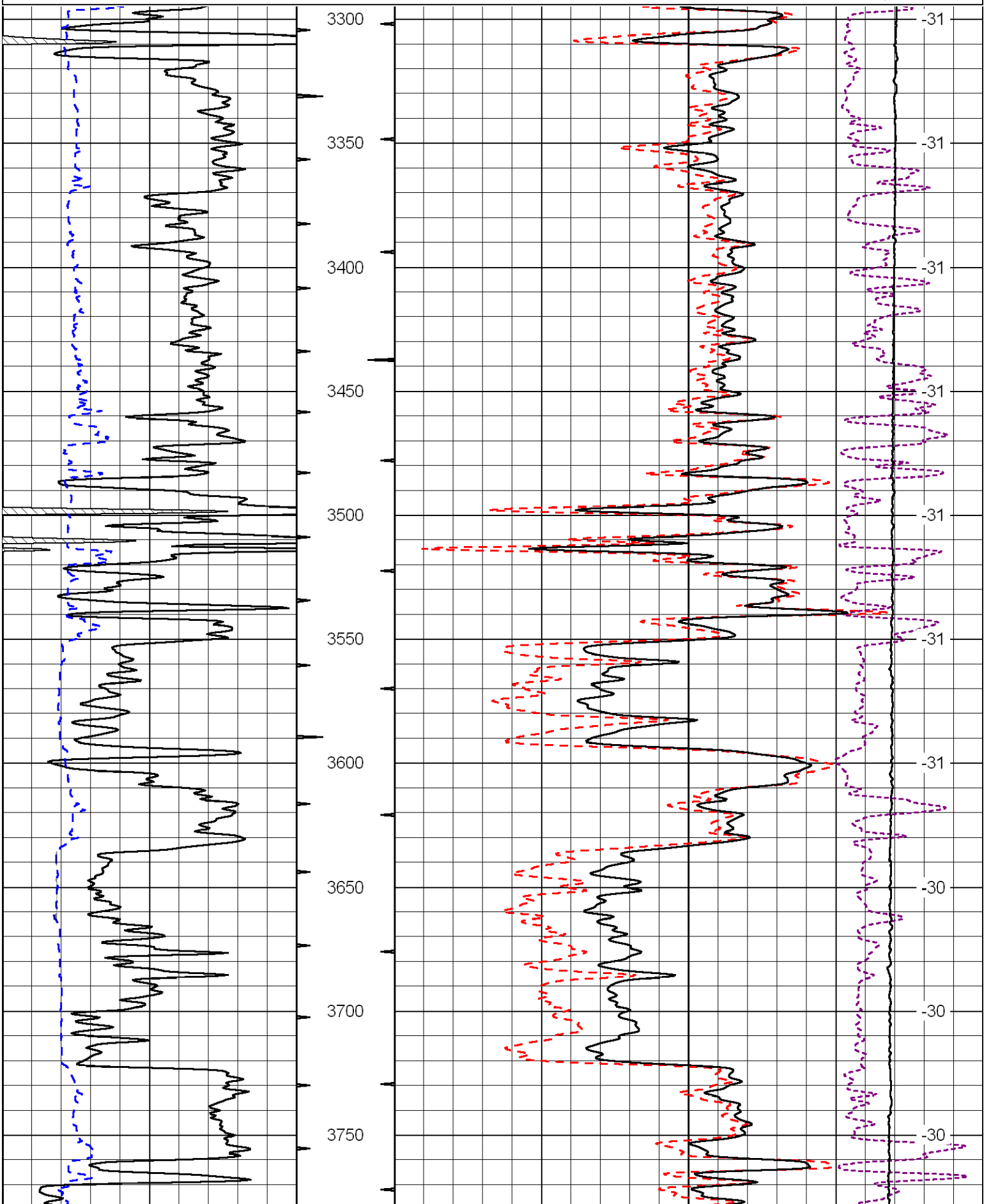
Thank you for using Log-Tech, Inc.
 (785) 625-3858

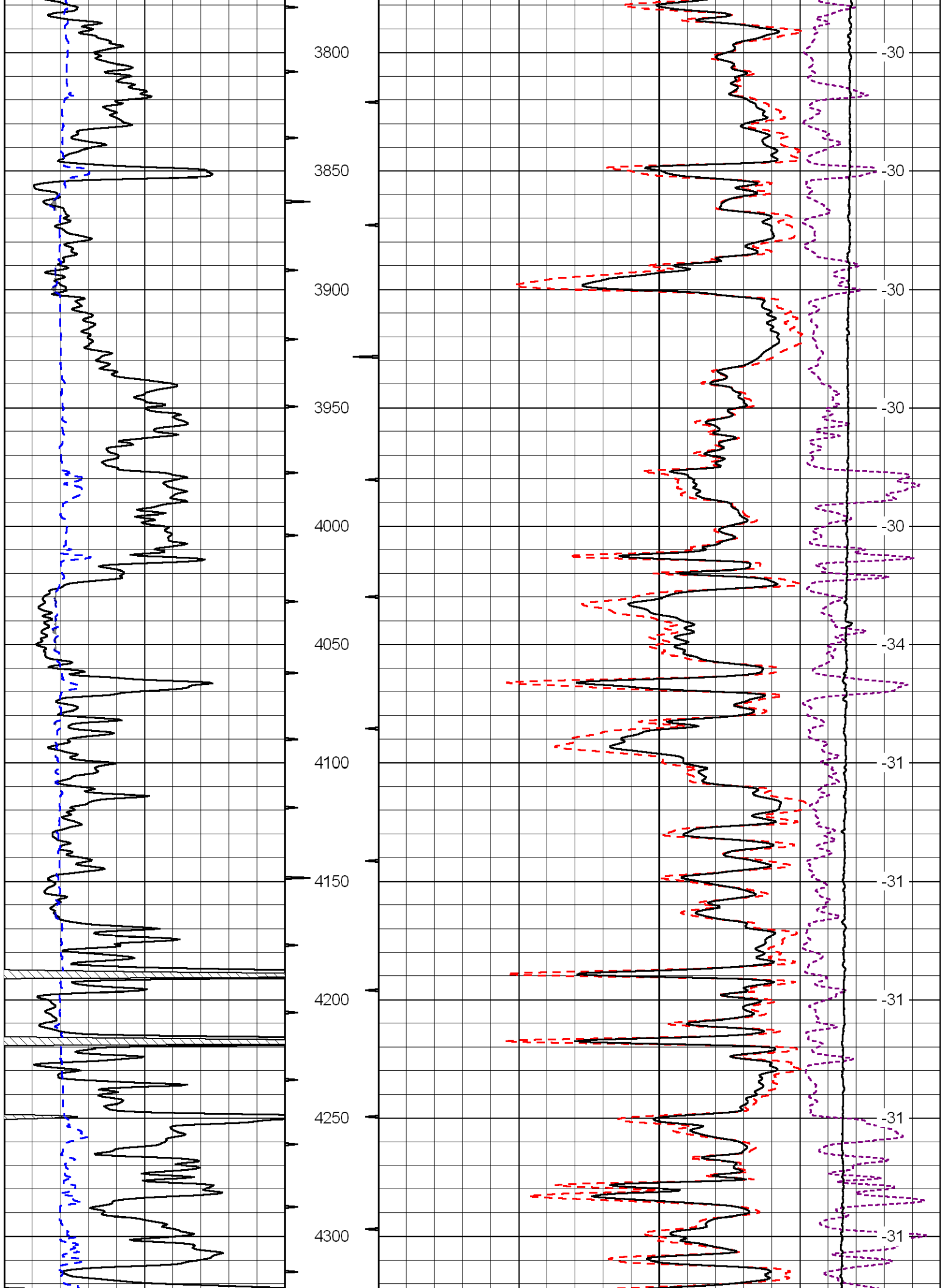
Sharon, KS
 E Edge of Town to Tri-City Blacktop,
 2 S, E Into

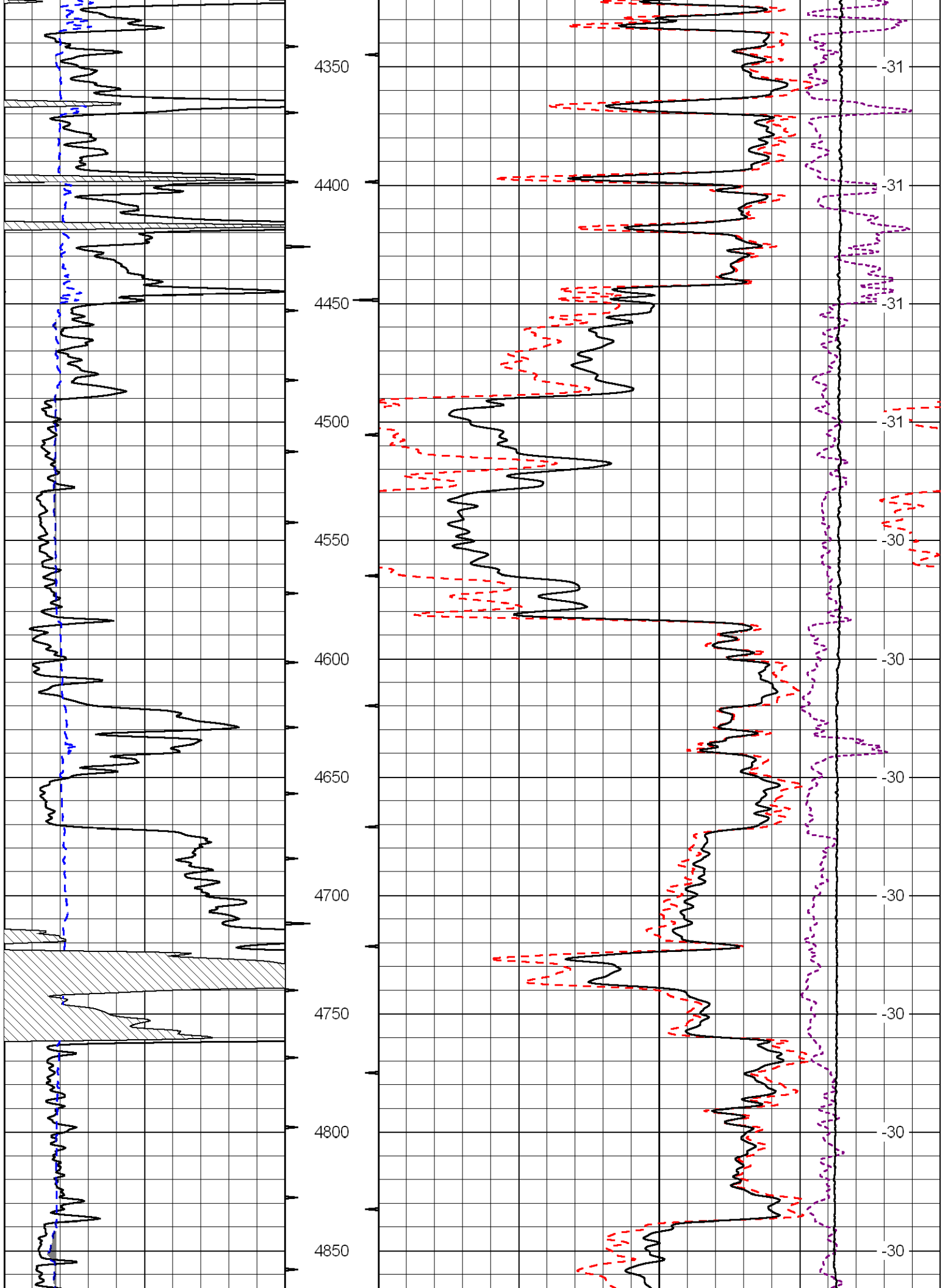
Database File: chihd.db
 Dataset Pathname: DIL/chistk
 Presentation Format: cdl
 Dataset Creation: Fri Aug 03 13:02:26 2012
 Charted by: Depth in Feet scaled 1:600

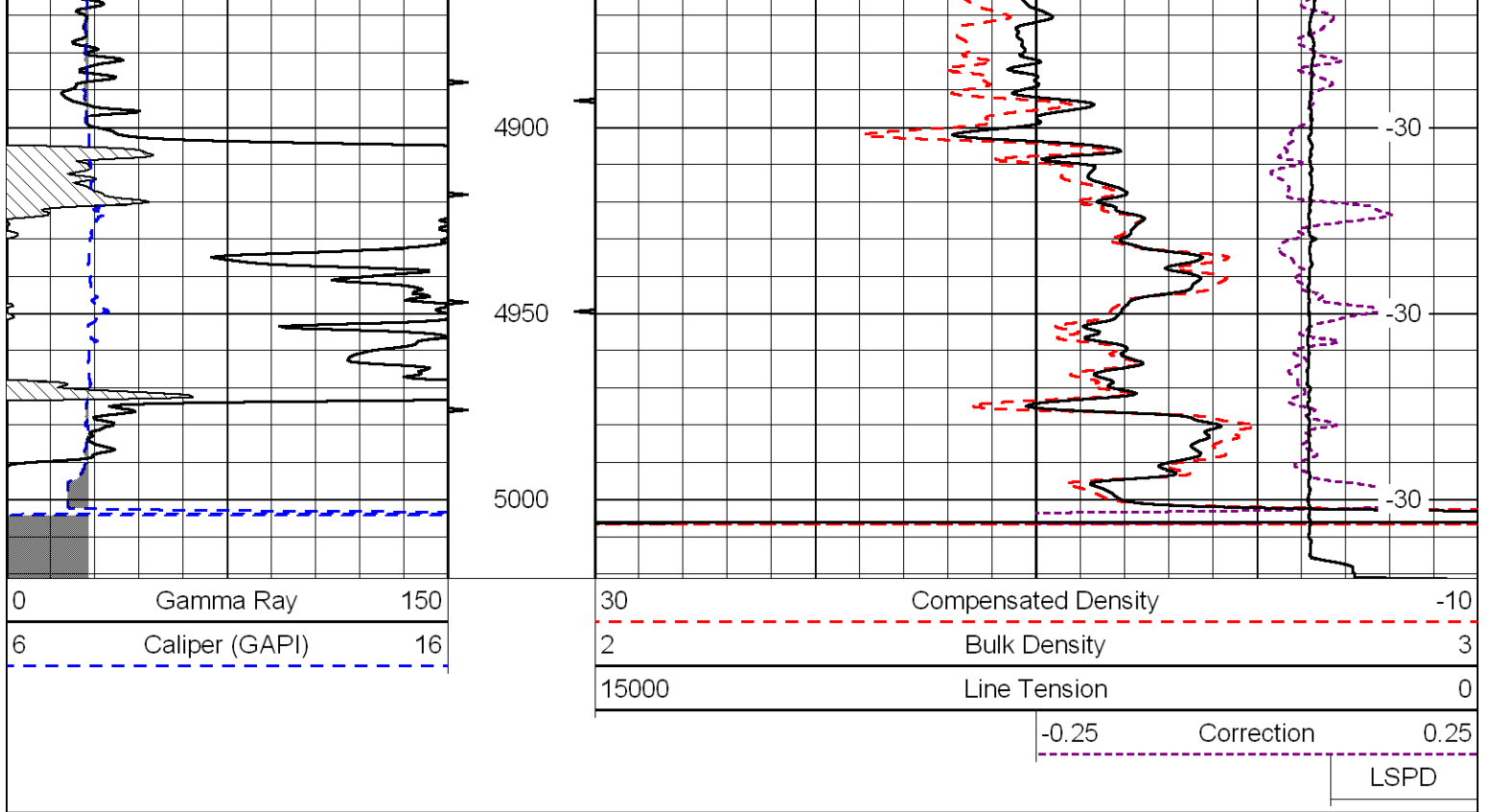
0	Gamma Ray	150
6	Caliper (GAPI)	16

30	Compensated Density	-10
2	Bulk Density	3
15000	Line Tension	0
-0.25	Correction	0.25
		LSPD









Database File: chihd.db
 Dataset Pathname: DIL/chistk
 Presentation Format: cndlspec
 Dataset Creation: Fri Aug 03 13:02:26 2012
 Charted by: Depth in Feet scaled 1:240

