



Pioneer Energy Services

Dual Induction Log

API No.	15-007-23,906-00-00	
Company	Chieftain Oil Company, Inc.	
Well	Palmer No. 2	
Field	Mcguire - Goemann South	
County	Barber	State Kansas
Location	1876' FNL & 330' FWL	
Sec: 3	Twp: 33 S	Rge: 10 W
Permanent Datum	Ground Level	Elevation 1473
Log Measured From	Kelly Bushing	12 Ft. Above Perm. Datum
Drilling Measured From	Kelly Bushing	K.B. 1485 D.F. 1473 G.L. 1473
Other Services	CNL/CDL MEL	

Date	8/3/2012	
Run Number	One	
Depth Driller	5014	
Depth Logger	5016	
Bottom Logged Interval	5015	
Top Log Interval	300	
Casing Driller	8.625 @ 311	
Casing Logger	305	
Bit Size	7.875	
Type Fluid in Hole	Chemical	
Salinity, ppm CL	7200	
Density / Viscosity	9.2	53
pH / Fluid Loss	10.0	11.0
Source of Sample	Flowline	
Rm @ Meas. Temp	.75 @ 82	
Rmf @ Meas. Temp	.56 @ 82	
Rmc @ Meas. Temp	1.01 @ 82	
Source of Rmf / Rmc	Charts	
Rm @ BHT	.49 @ 126	
Operating Rig Time	4 1/2 Hours	
Max Rec. Temp. F	126	
Equipment Number	17	
Location	Hays	
Recorded By	D. Martin	
Witnessed By	David Barker	

<<< Fold Here >>>

All interpretations are opinions based on inferences from electrical or other measurements and we cannot and do not guarantee the accuracy or correctness of any interpretation, and we shall not, except in the case of gross or willful negligence on our part, be liable or responsible for any loss, costs, damages, or expenses incurred or sustained by anyone resulting from any interpretation made by any of our officers, agents or employees. These interpretations are also subject to our general terms and conditions set out in our current Price Schedule.

Comments

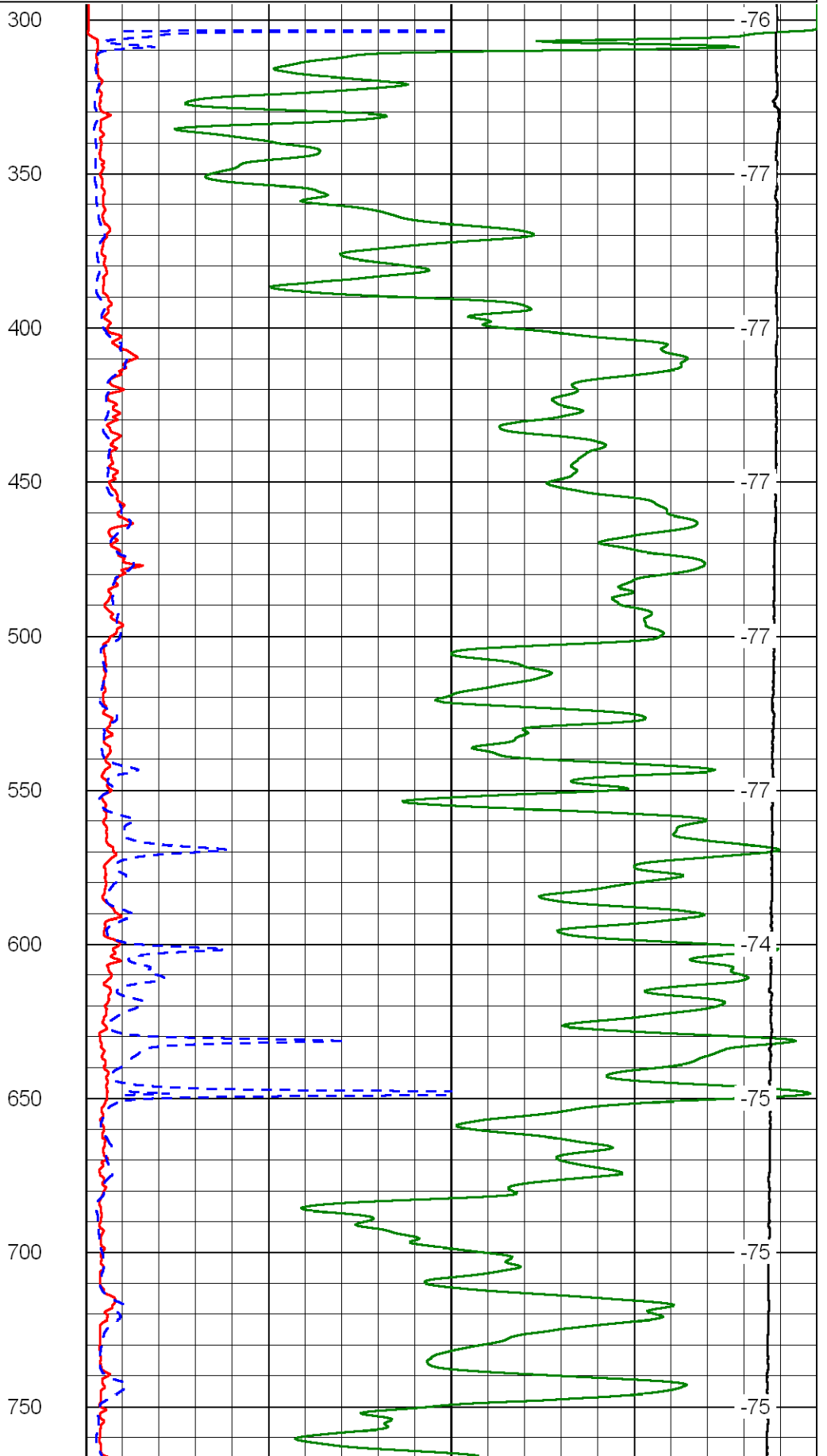
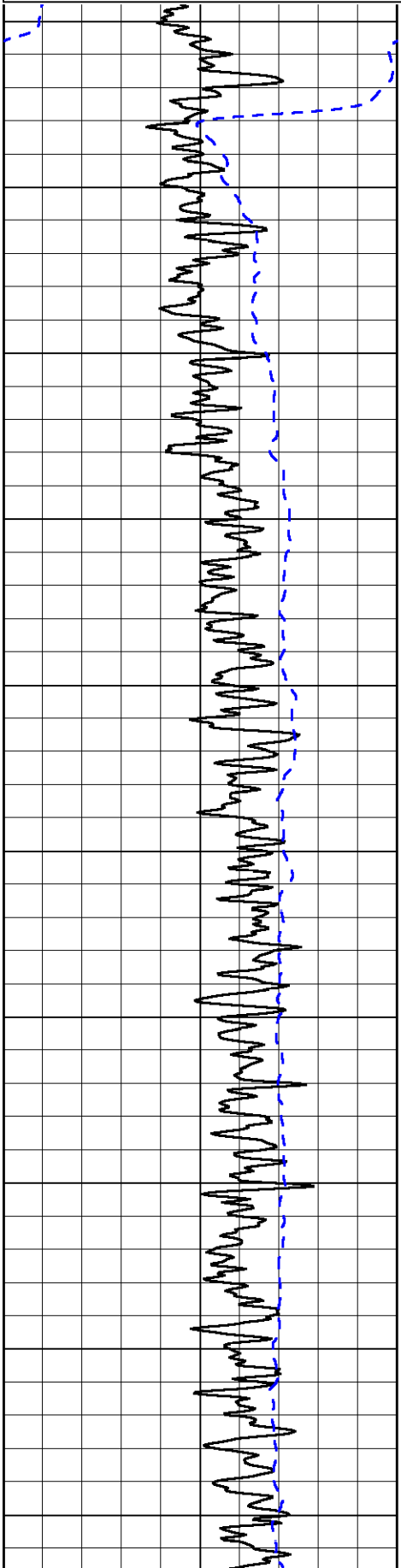
Thank you for using Log-Tech, Inc.
 (785) 625-3858
 Sharon, KS
 E Edge of Town to Tri-City Blacktop,
 2 S, E Into

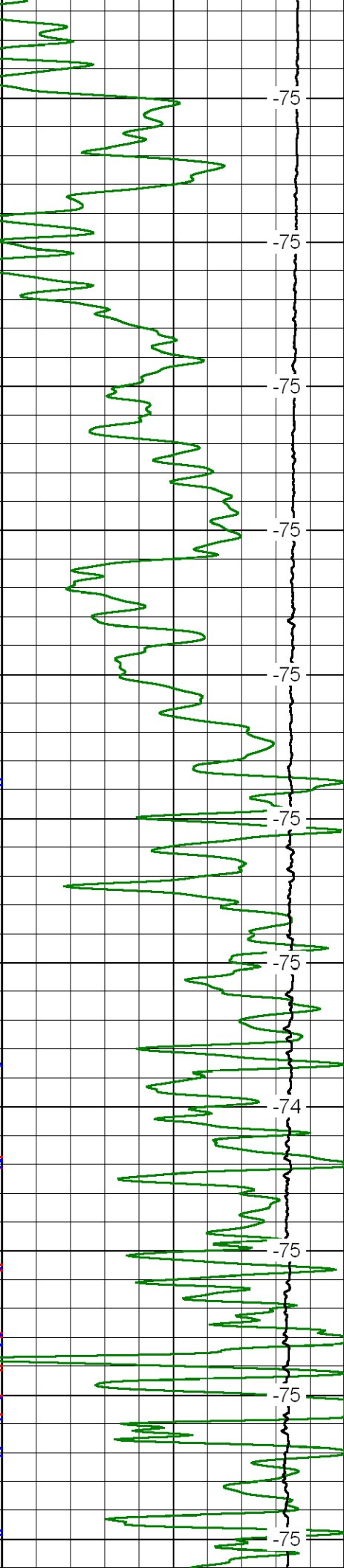
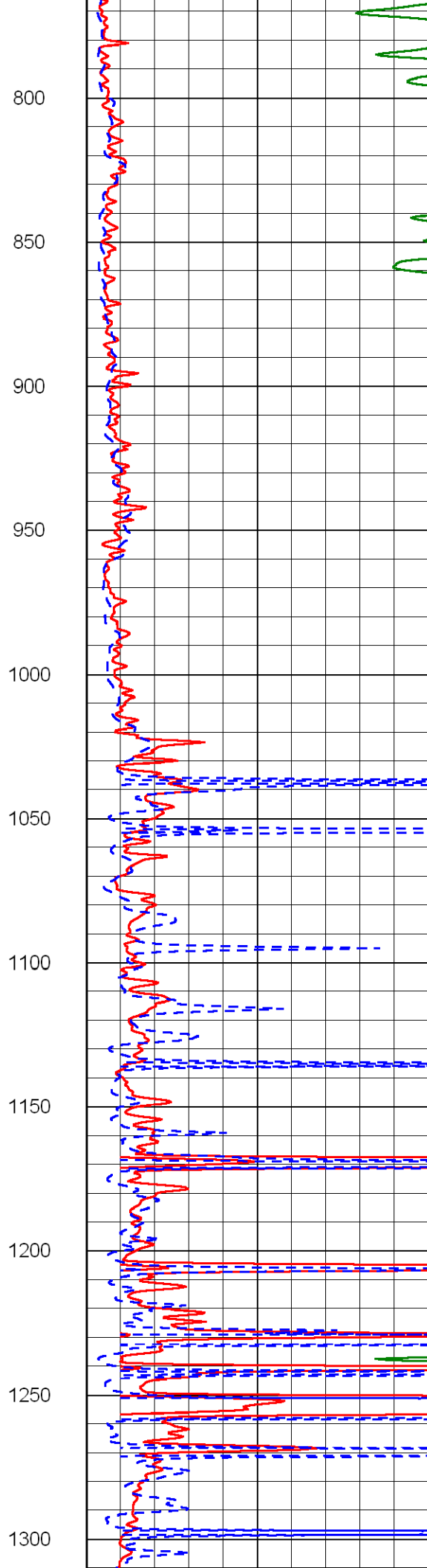
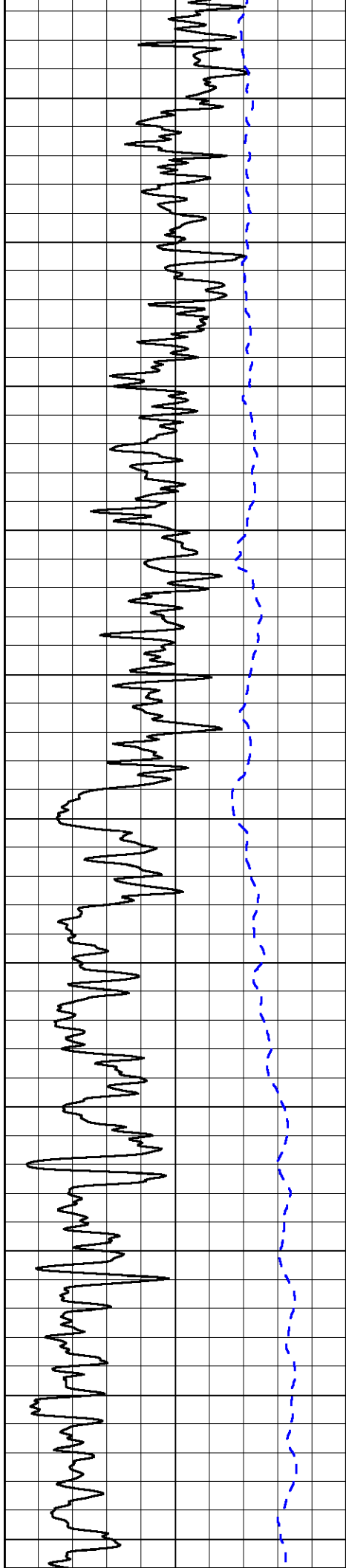
Database File: chihd.db
 Dataset Pathname: DIL/chistk
 Presentation Format: dil2in
 Dataset Creation: Fri Aug 03 13:02:26 2012
 Charted by: Depth in Feet scaled 1:600

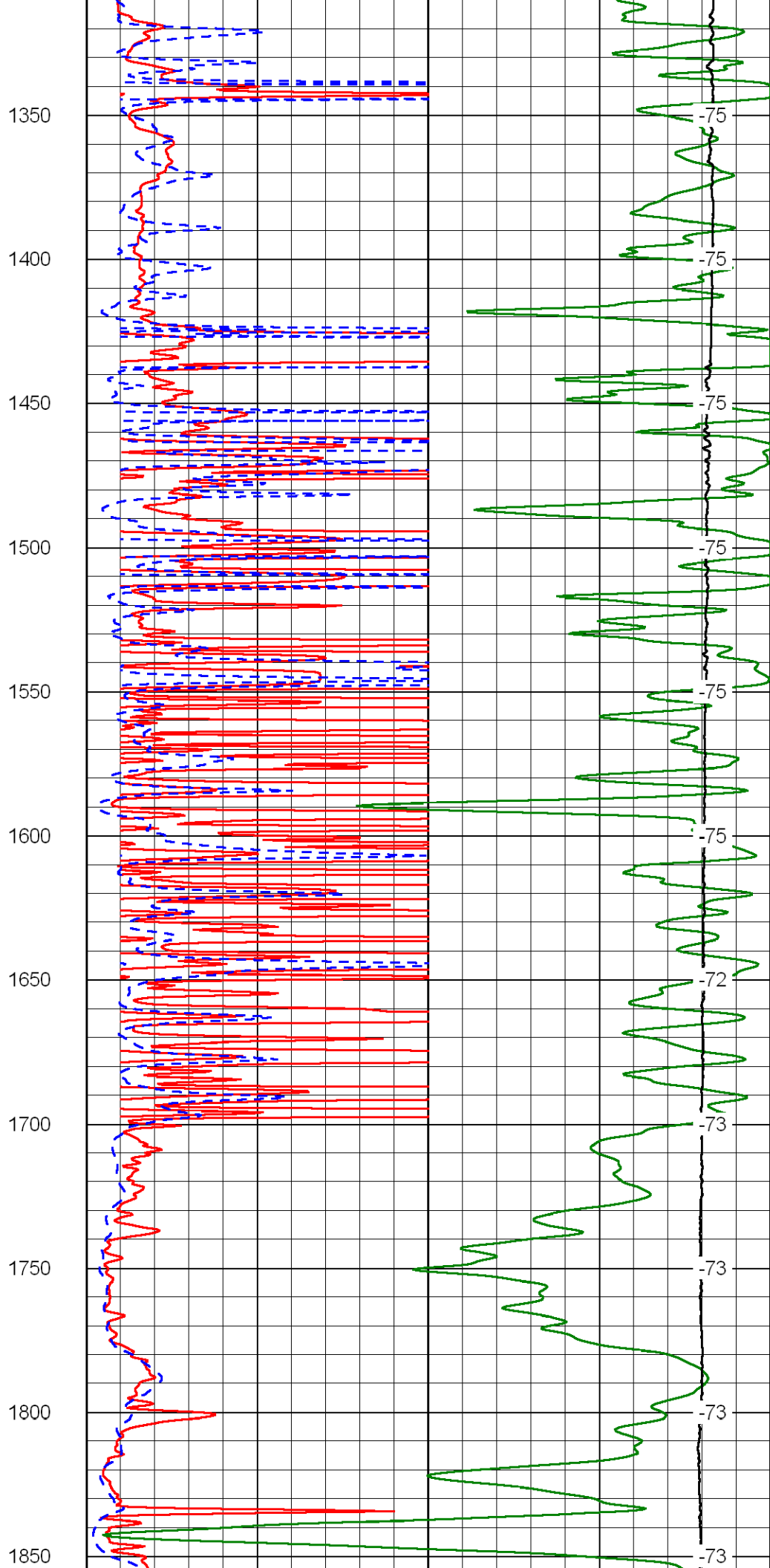
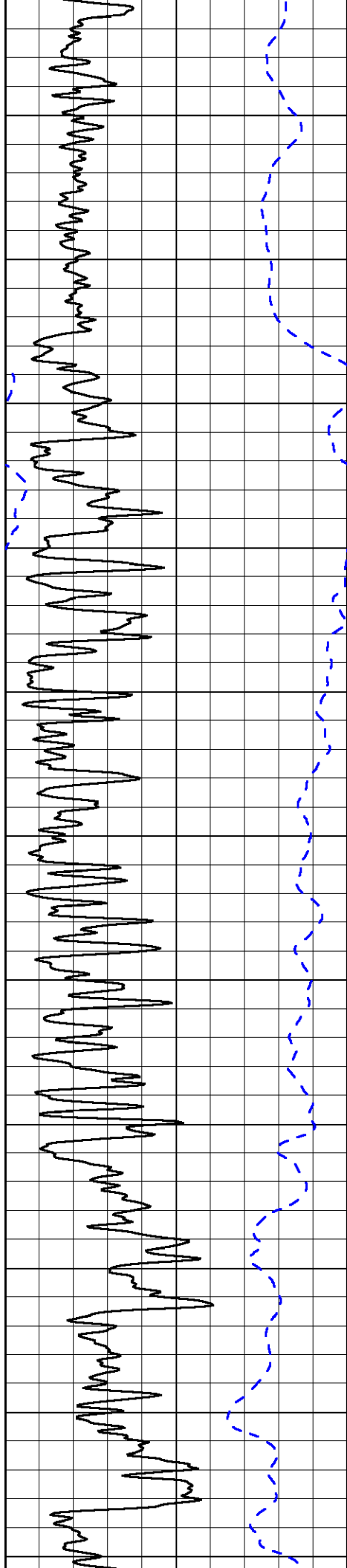
0	Gamma Ray	150
-200	SP	0

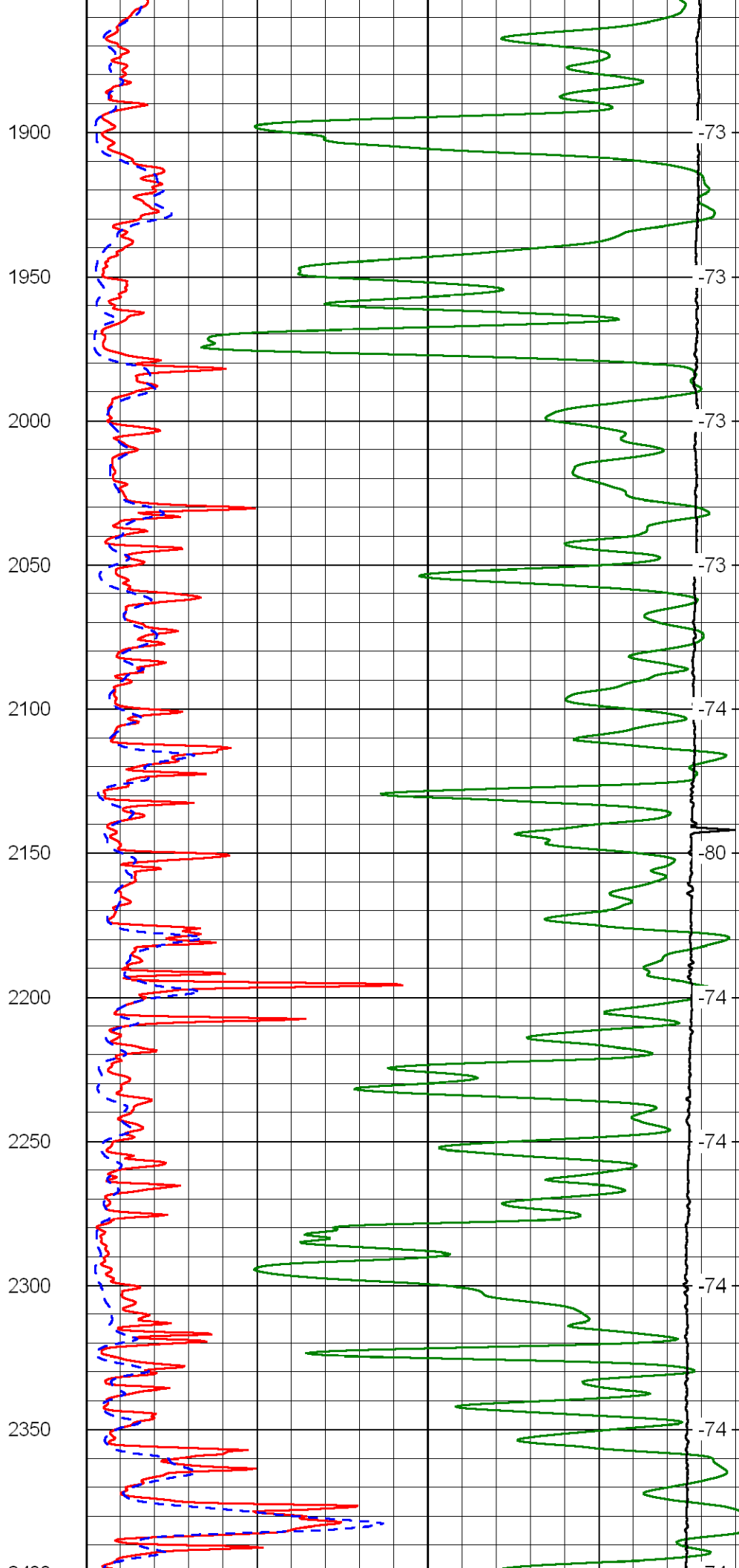
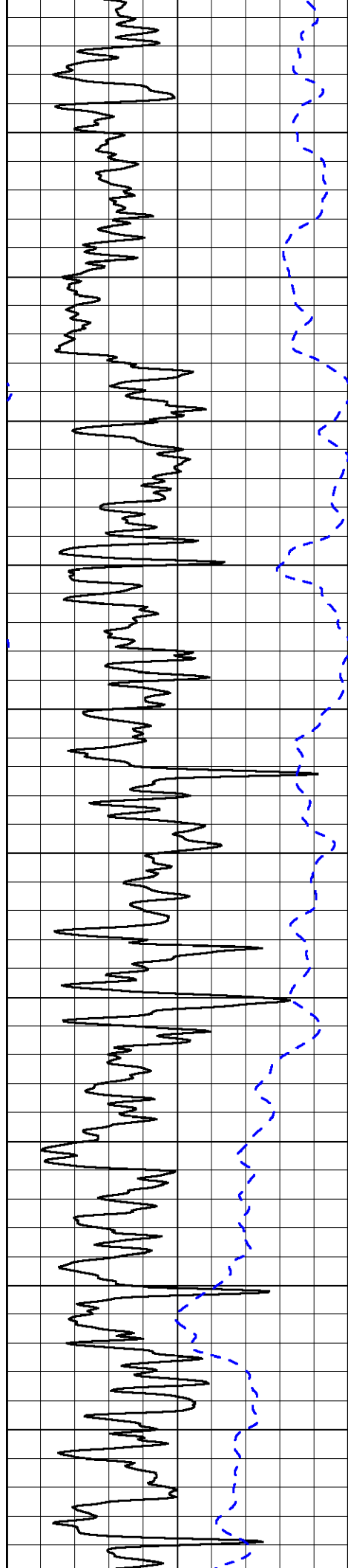
0	Shallow Resistivity	50
0	Deep Resistivity	50
1000	Conductivity	0
15000	Line Tension	0

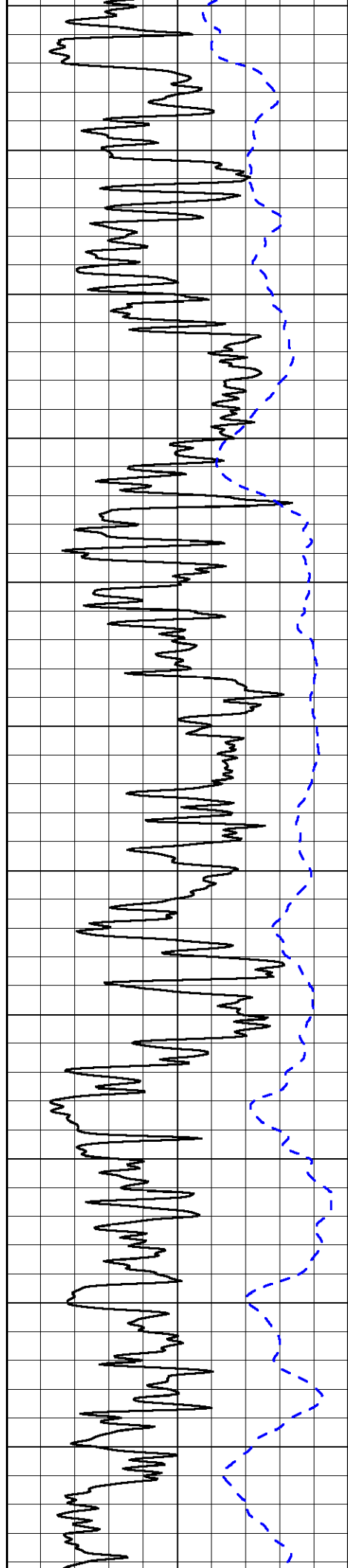
50	Shallow Resistivity	500
50	Deep Resistivity	500



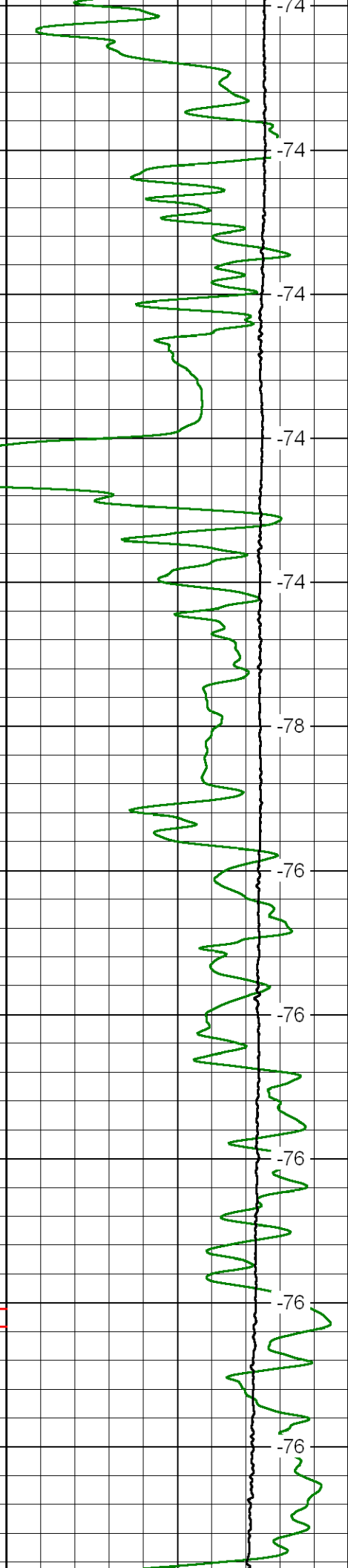
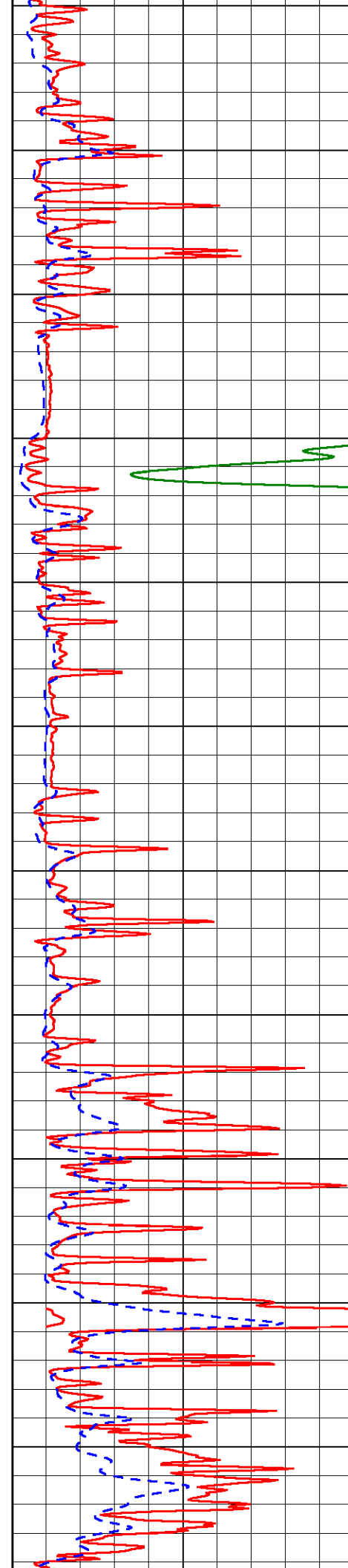




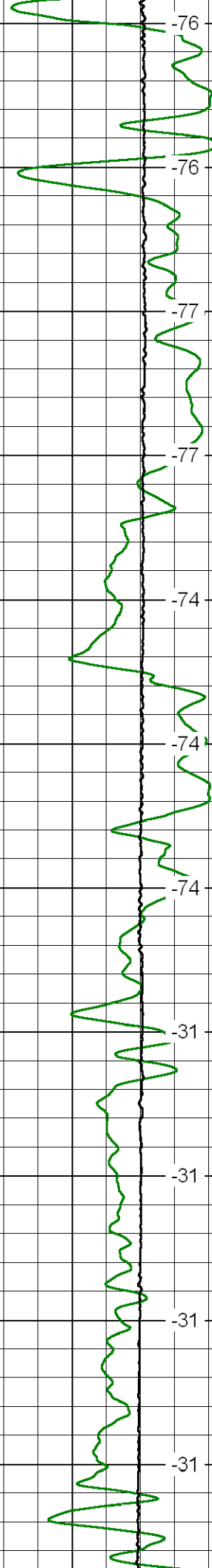
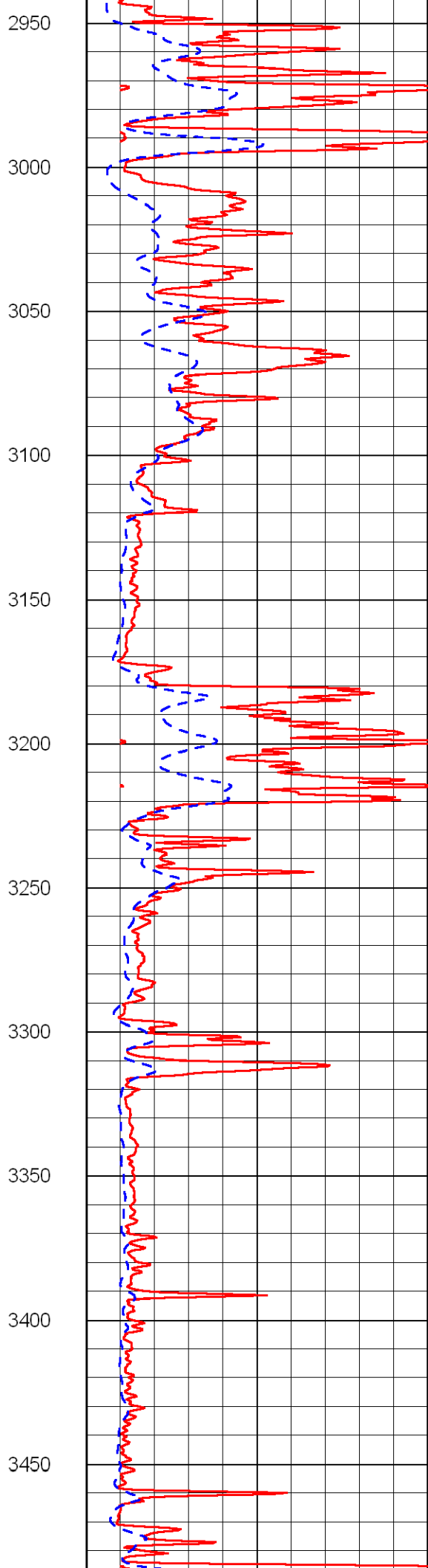
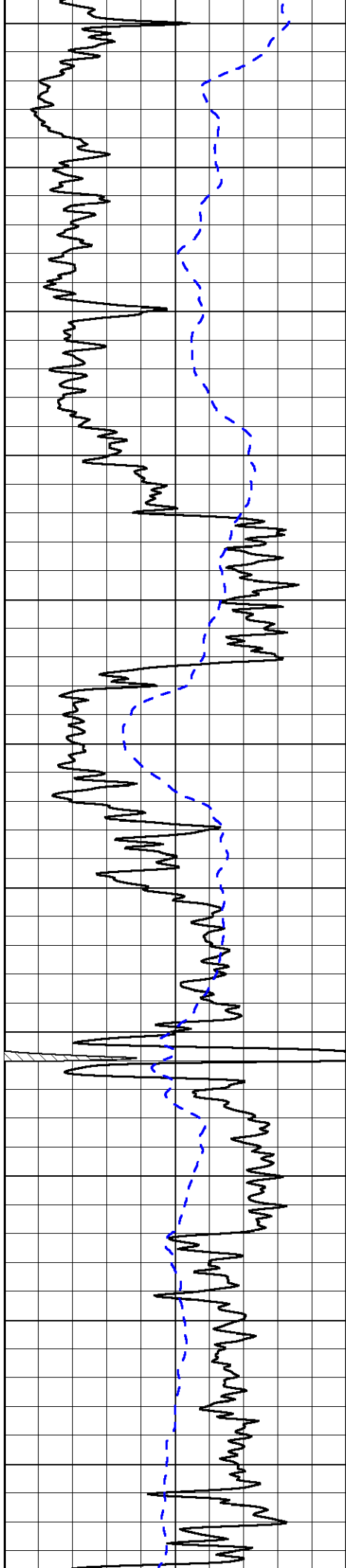


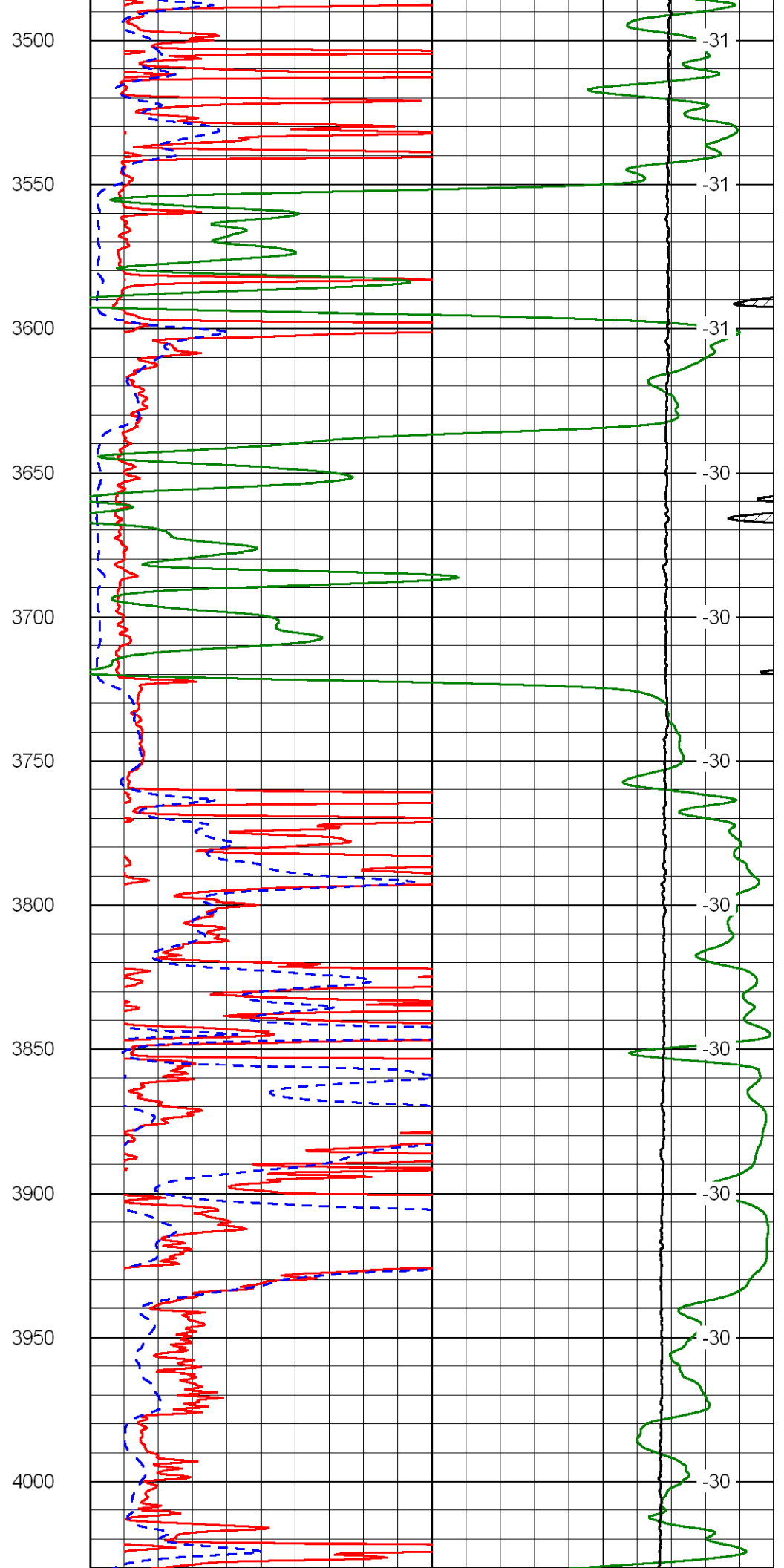
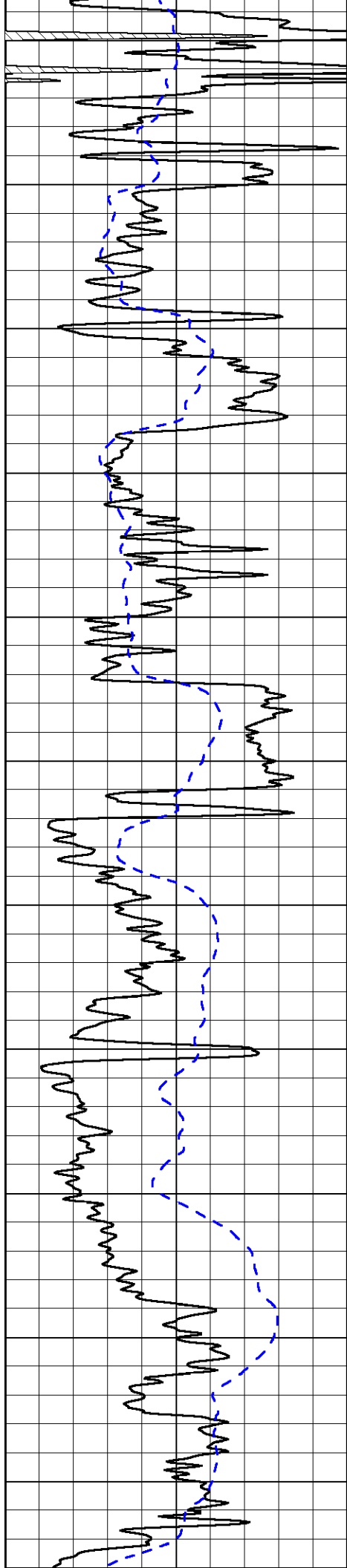


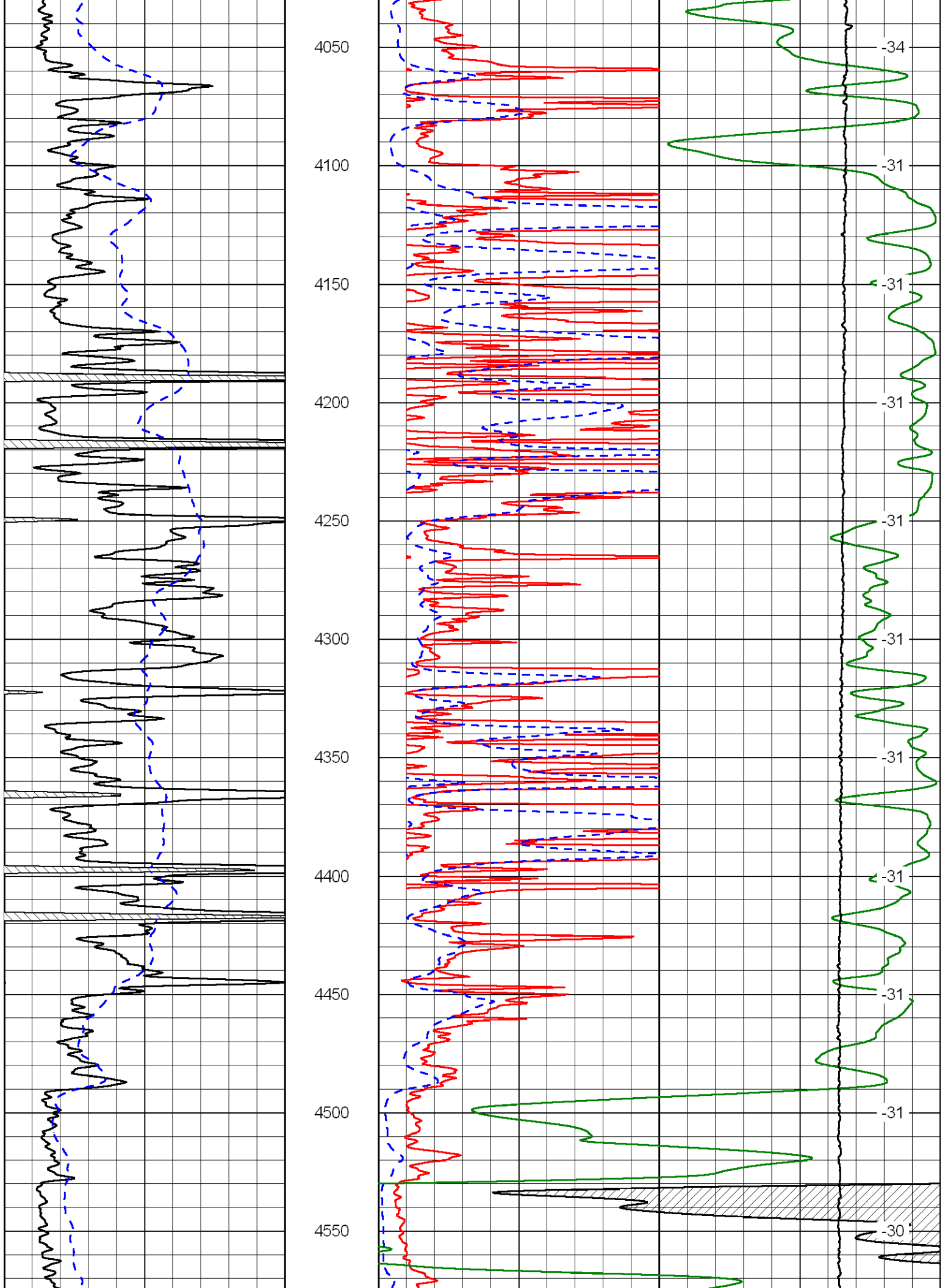
2400
2450
2500
2550
2600
2650
2700
2750
2800
2850
2900

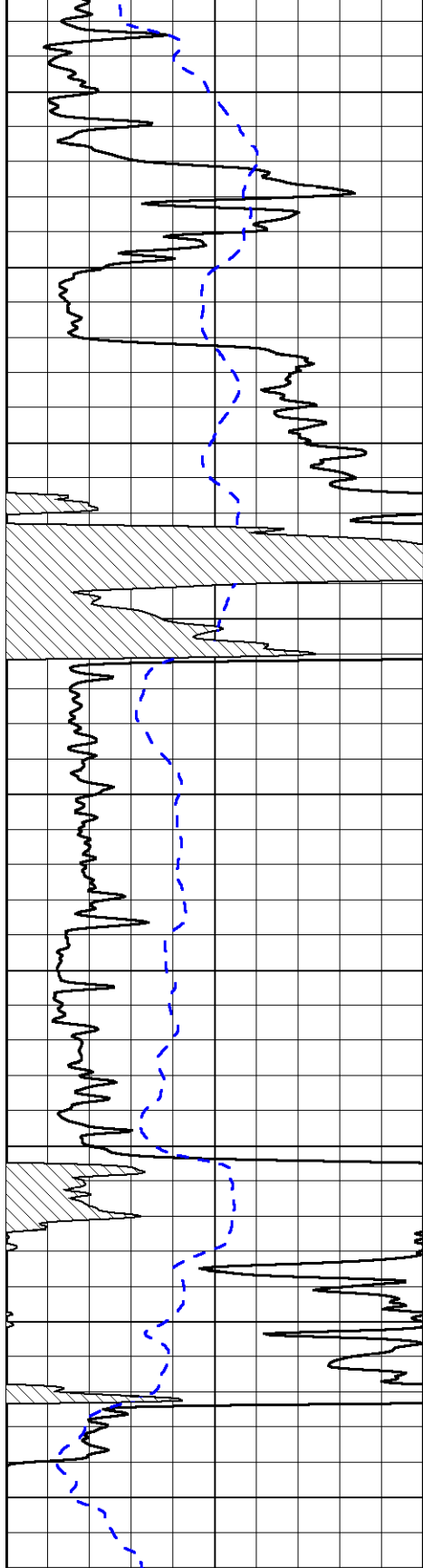


-74
-74
-74
-74
-74
-78
-76
-76
-76
-76
-76

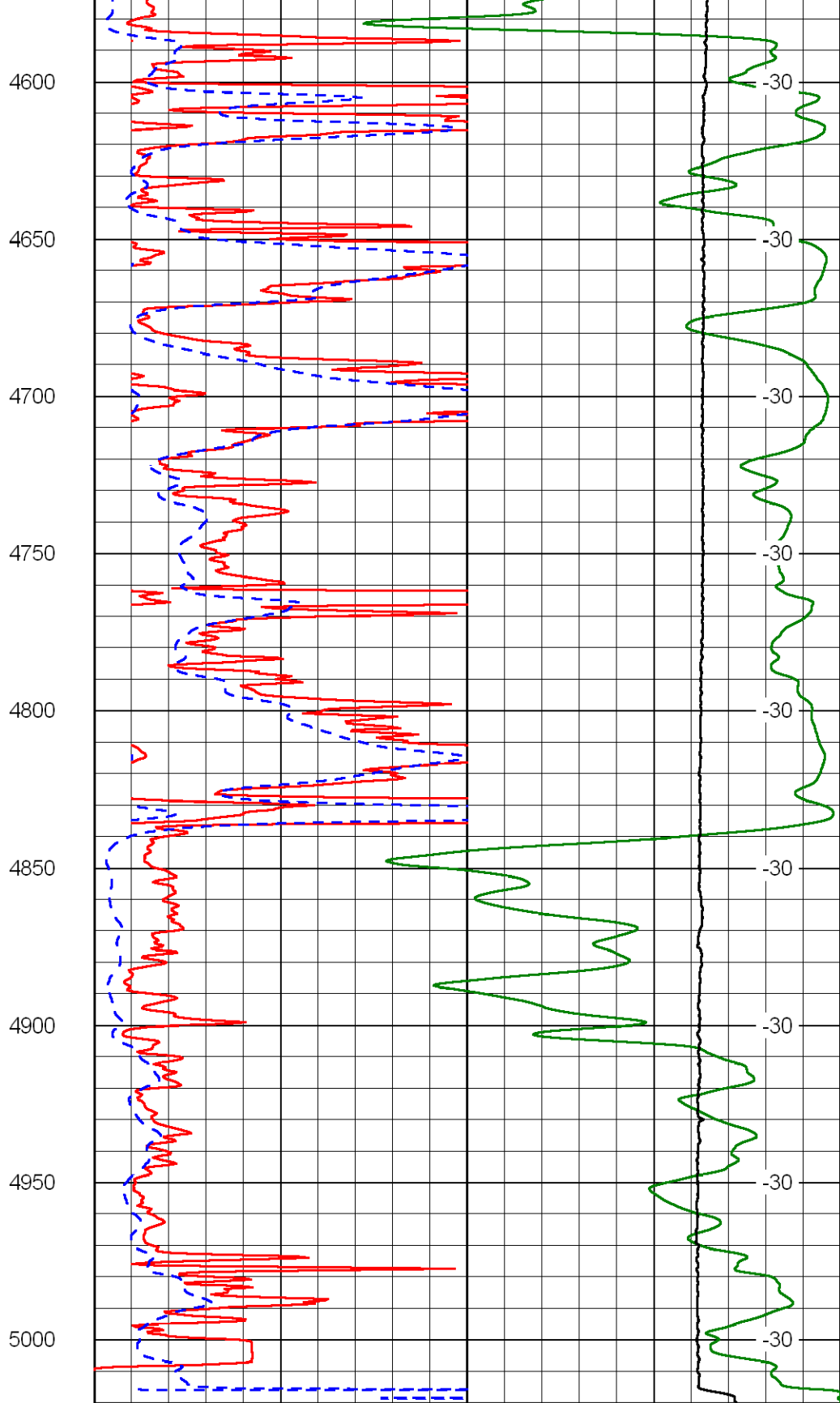








0 Gamma Ray 150
 -200 SP 0



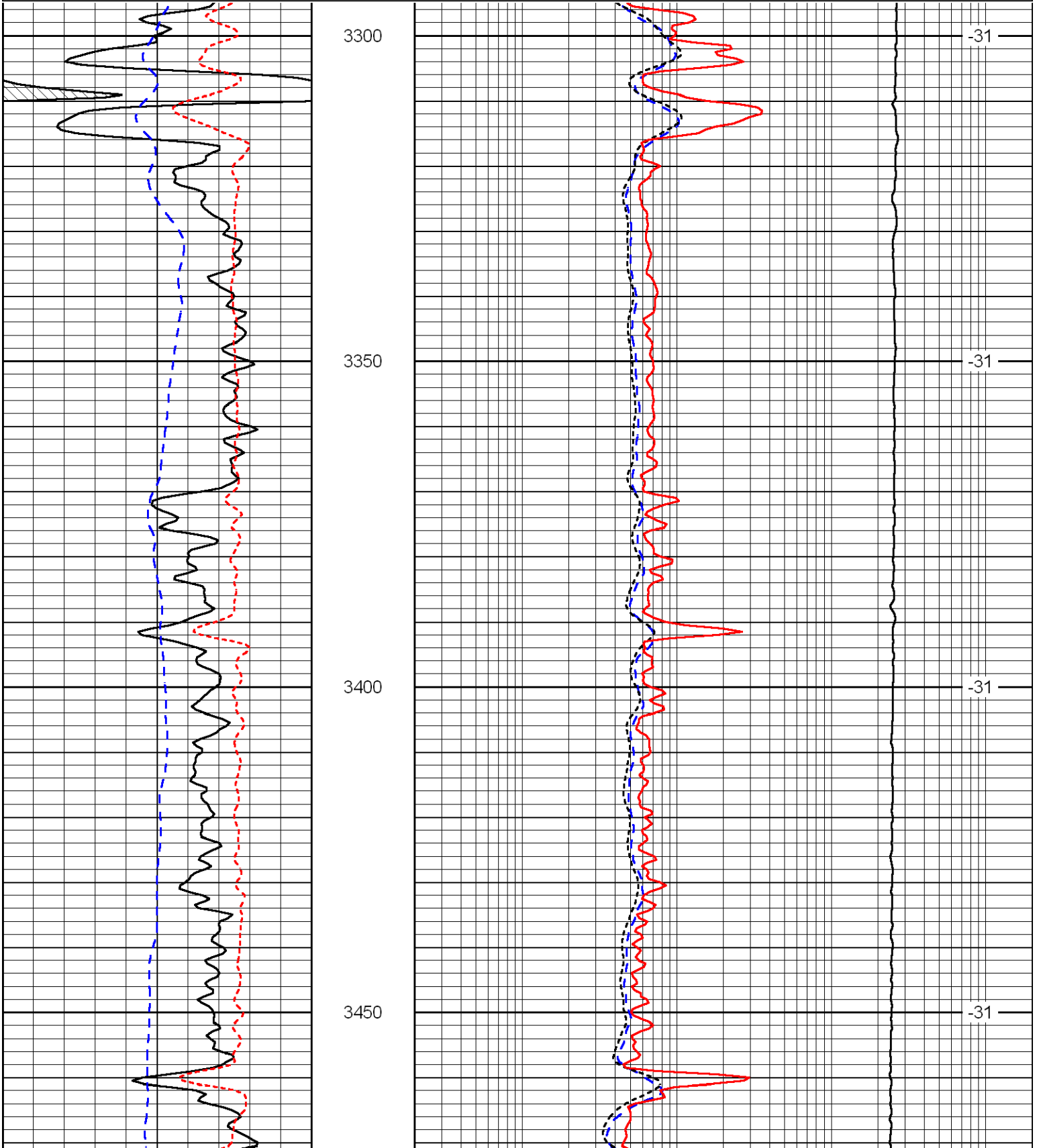
0 Shallow Resistivity 50
 0 Deep Resistivity 50
 1000 Conductivity 0
 15000 Line Tension 0
 50 Shallow Resistivity 500
 50 Deep Resistivity 500

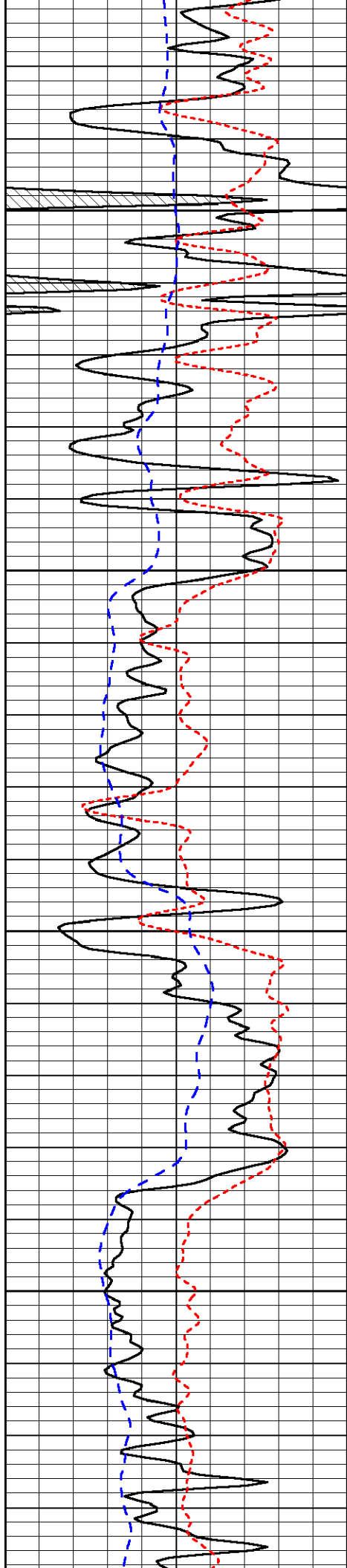
Database File: c:\mhd\ub
 Dataset Pathname: DIL/chistk
 Presentation Format: dil
 Dataset Creation: Fri Aug 03 13:02:26 2012
 Charted by: Depth in Feet scaled 1:240

0	Gamma Ray	150
-160	RXO/RT	40
-200	SP	0

0.2	Deep Resistivity	2000
0.2	Medium Resistivity	2000
0.2	Shallow Resistivity	2000
10000	Line Tension	0

LSPD



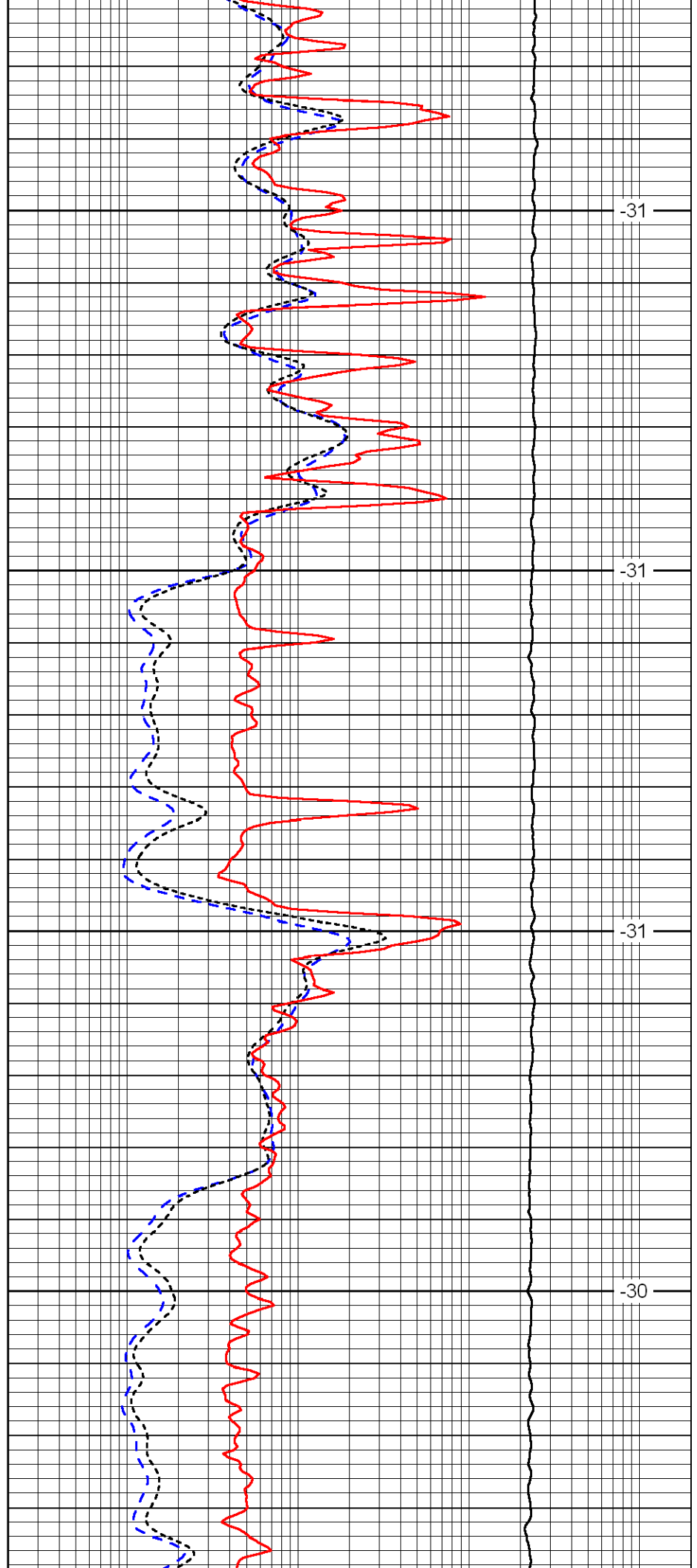


3500

3550

3600

3650

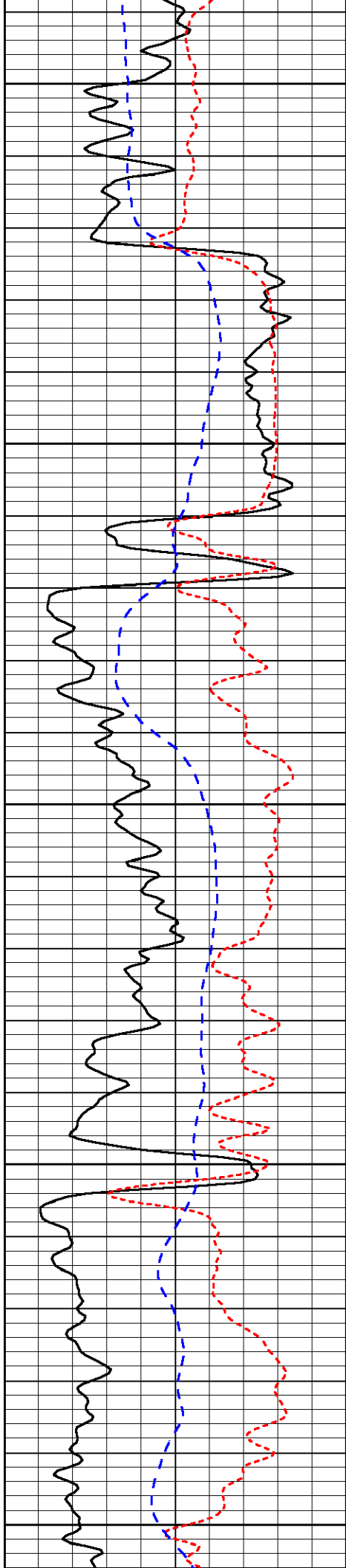


-31

-31

-31

-30



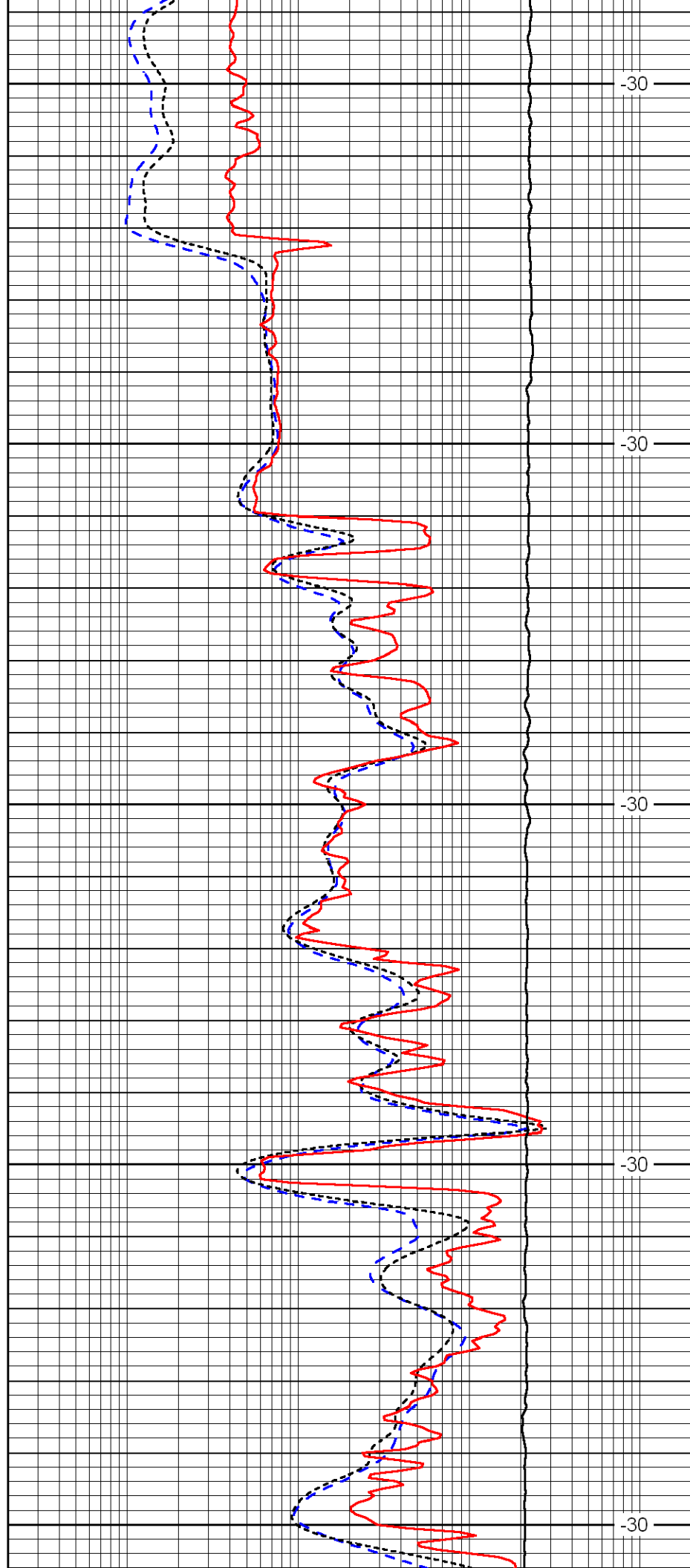
3700

3750

3800

3850

3900



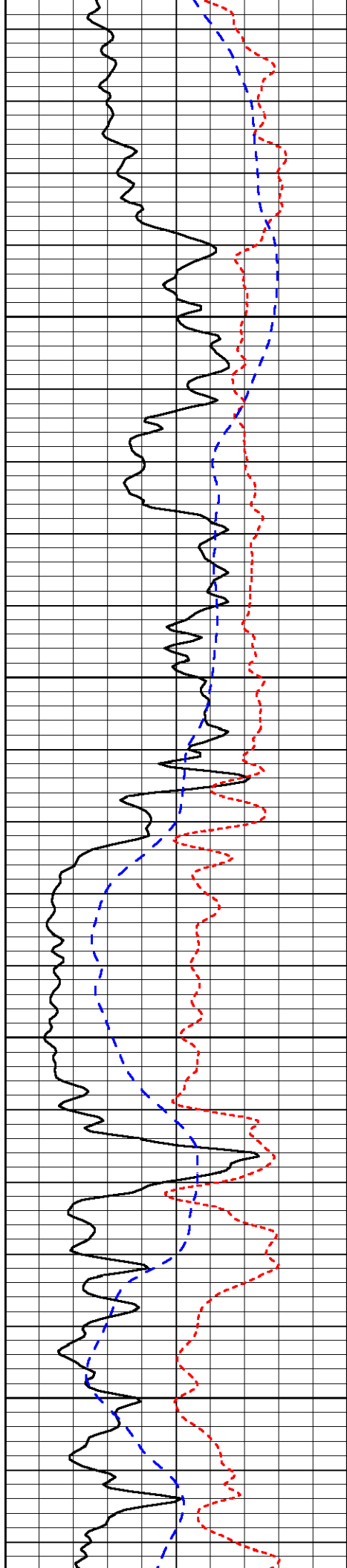
-30

-30

-30

-30

-30

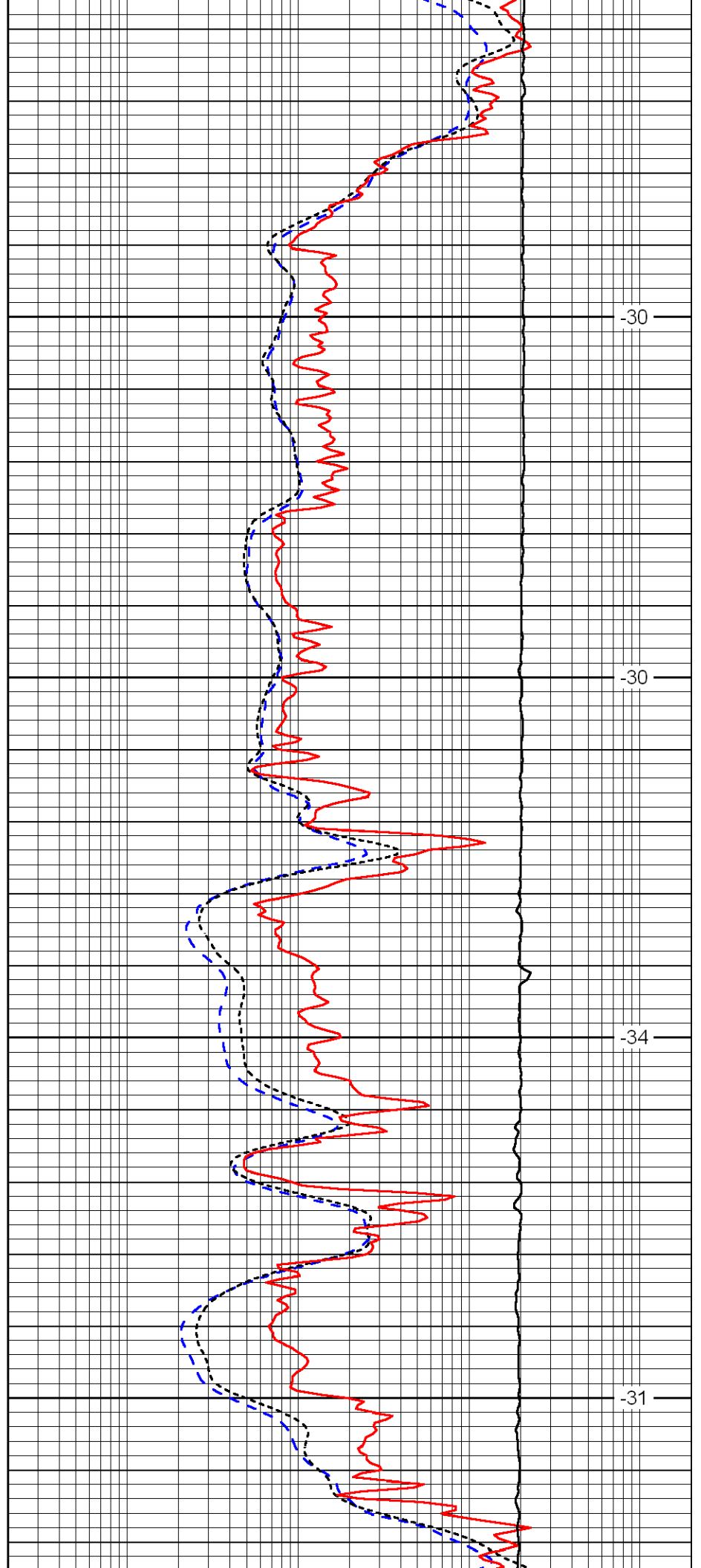


3950

4000

4050

4100

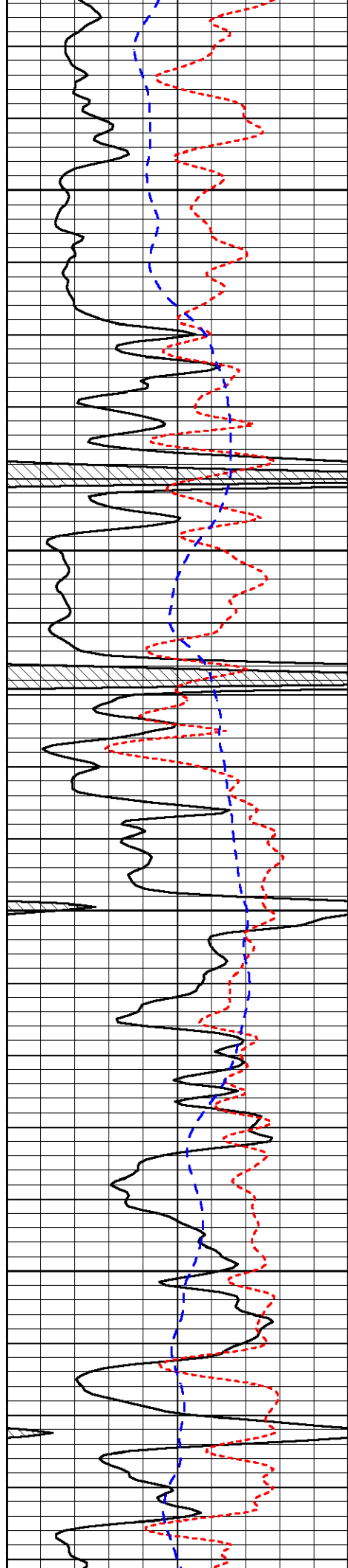


-30

-30

-34

-31

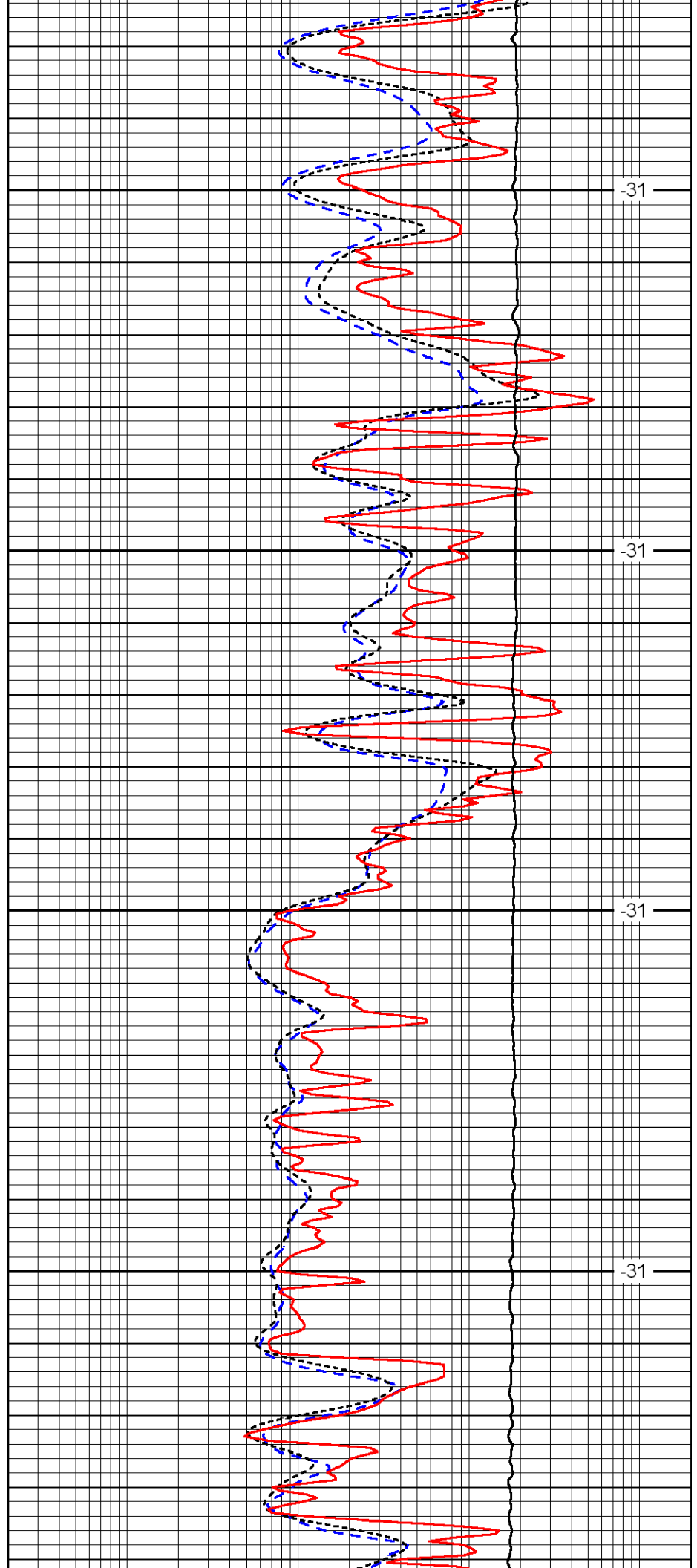


4150

4200

4250

4300

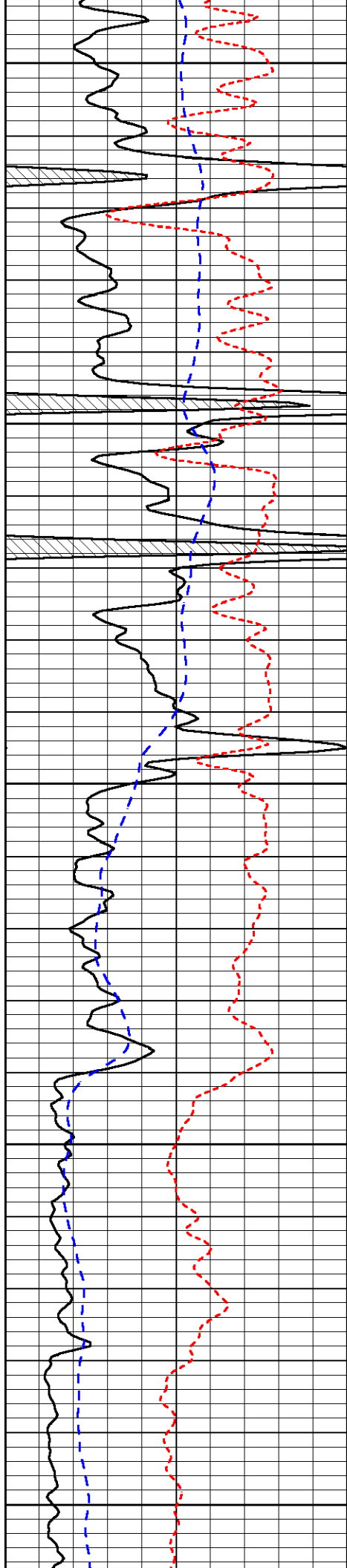


-31

-31

-31

-31



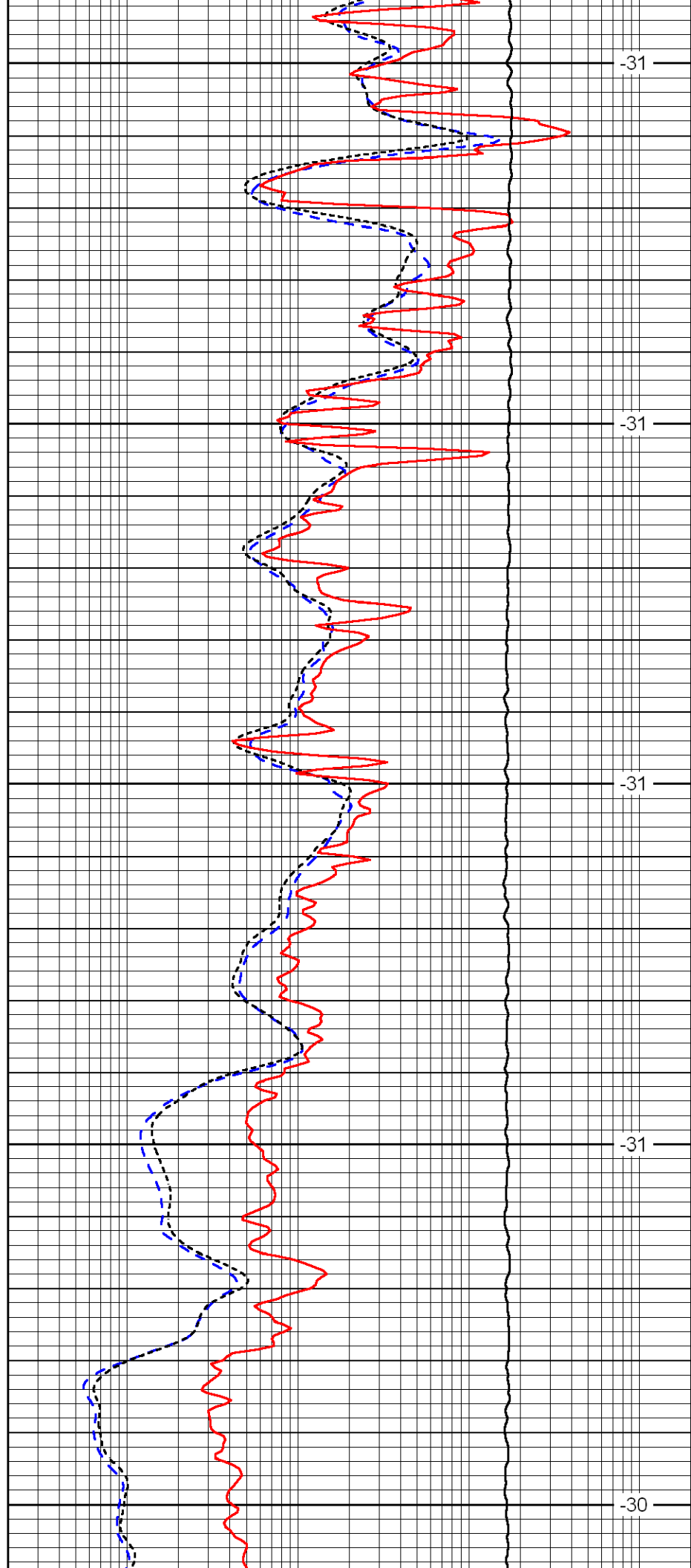
4350

4400

4450

4500

4550



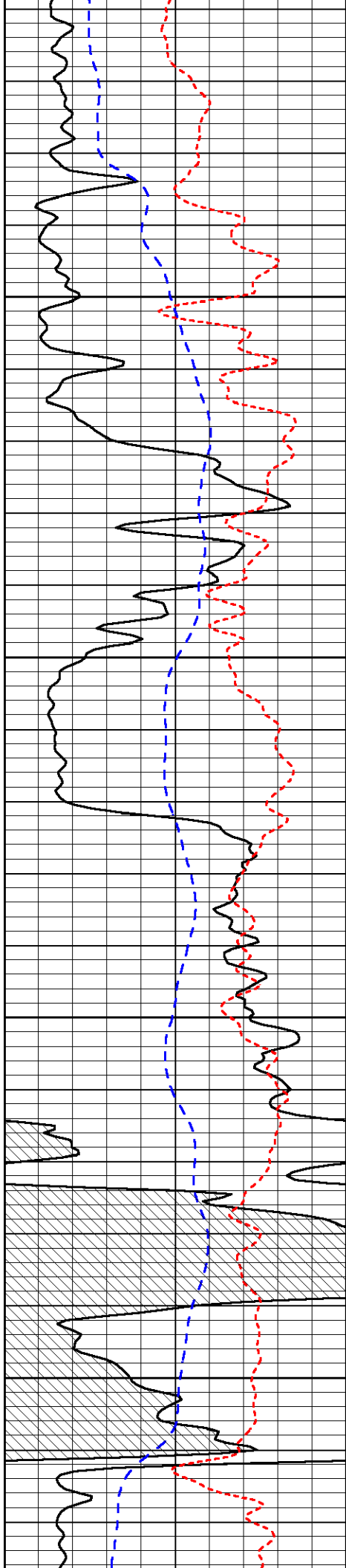
-31

-31

-31

-31

-30

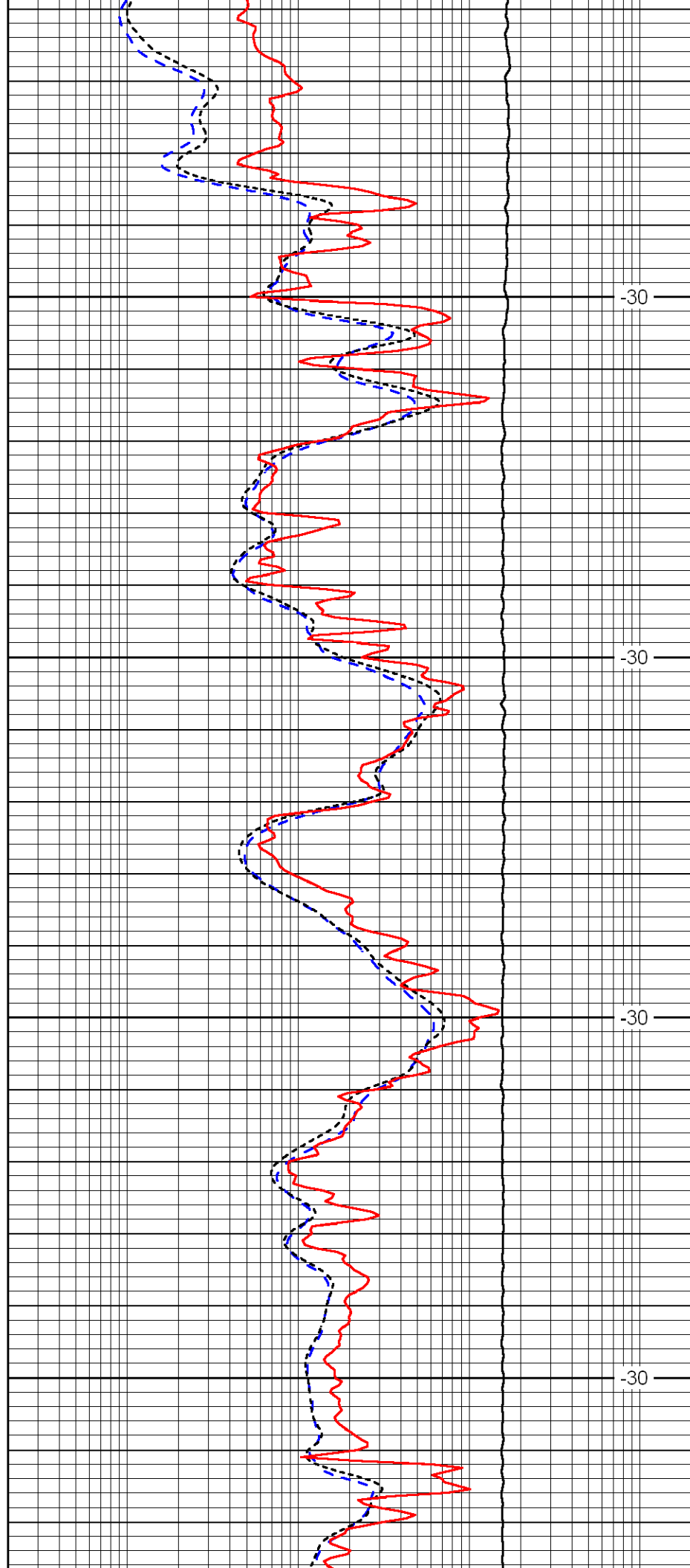


4600

4650

4700

4750

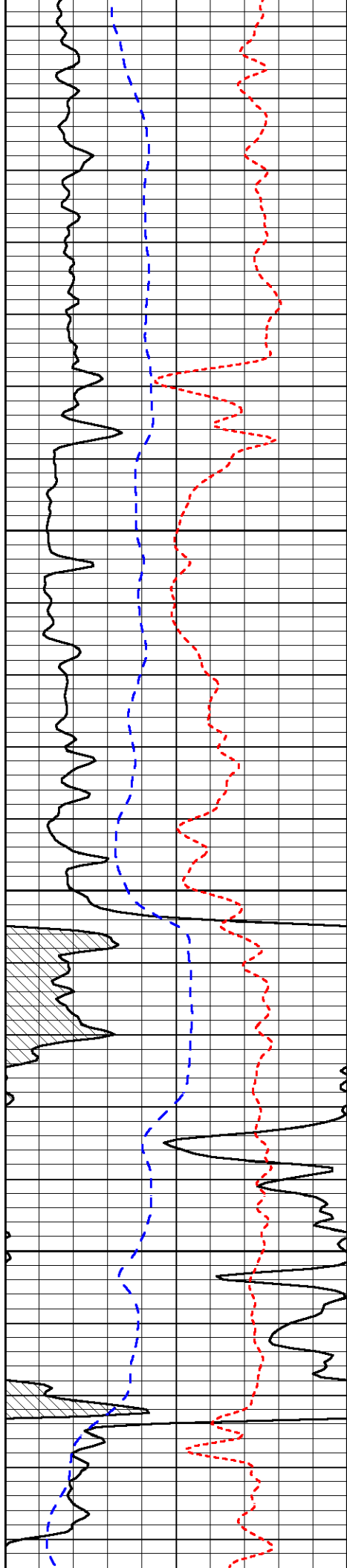


-30

-30

-30

-30

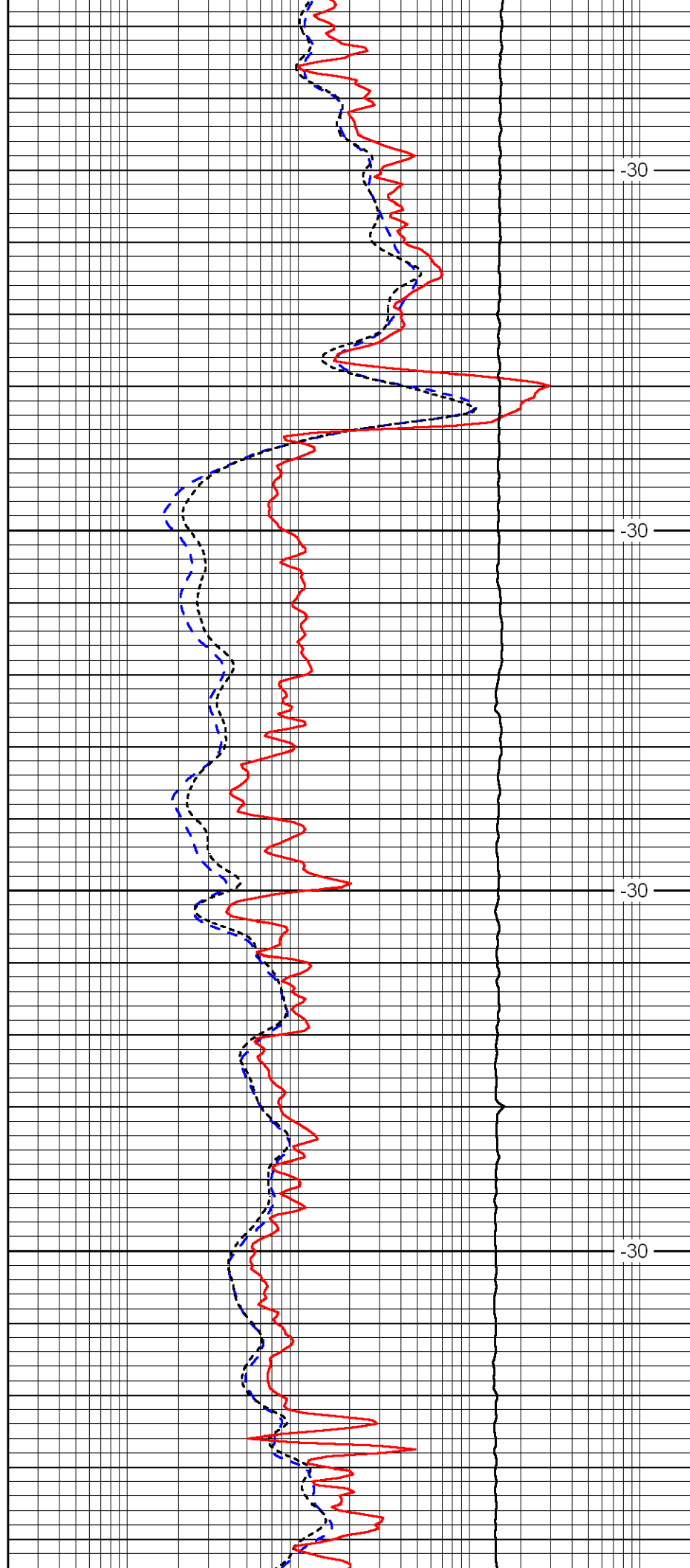


4800

4850

4900

4950



-30

-30

-30

-30

