

Company	John O Farmer Inc.	State	Kansas
Well	Hansen #1	County	Phillips
Field	Ray	Location:	330' FSL & 330' FVL
County	Phillips	API #:	15 147 20692
Location:	SEC 21 T1P 5S RGE 20W	Other Services	DIL CDNL
Permanent Datum	Ground Level	Elevation	2190'
Log Measured From	KB 5 ASL	K.E.	2195'
Drilling Measured From	KB	D.L.	2194'
Date	6-24-12	G.L.	2190'
Run Lumber	Two		
Depth Driller	3689		
Depth Logger	3689		
Bottom Logger Interval	3689		
Top Log Interval	3007		
Casing Driller	208		
Casing Logger	208		
Bit Size	7 7/8"		
Type Fluid in Hole	Chemical Mud		
Density/ Viscosity	9.2/90		
pH/ Fluid Loss	11.5/8.0		
Source of Sample	Pit		
Rm @ Meas. Temp	1.5@Schiefel		
Rmc @ Meas. Temp	1.8@Schiefel		
Source of Rm / Rmc	Calculated		
Rm @ BHT	1.2@105deaf		
Time Circulation Stopped	7:30 a.m.		
Time Logger on Bottom	11:00 a.m.		
Maximum Recorded Temperature	106 deaf		
Equipment Number	1045		
Location	Hays, KS		
Recorded By	L. Smith		
Witnessed By	Mr. Austin Klaus		

<<< Fold Here >>>

All interpretations are opinions based on inferences from electrical or other measurements and we cannot and do not guarantee the accuracy or correctness of any interpretation, and we shall not, except in the case of gross or willful negligence on our part, be liable or responsible for any loss, costs, damages, or expenses incurred or sustained by anyone resulting from any interpretation made by any of our officers, agents or employees. These interpretations are also subject to our general terms and conditions set out in our current Price Schedule.

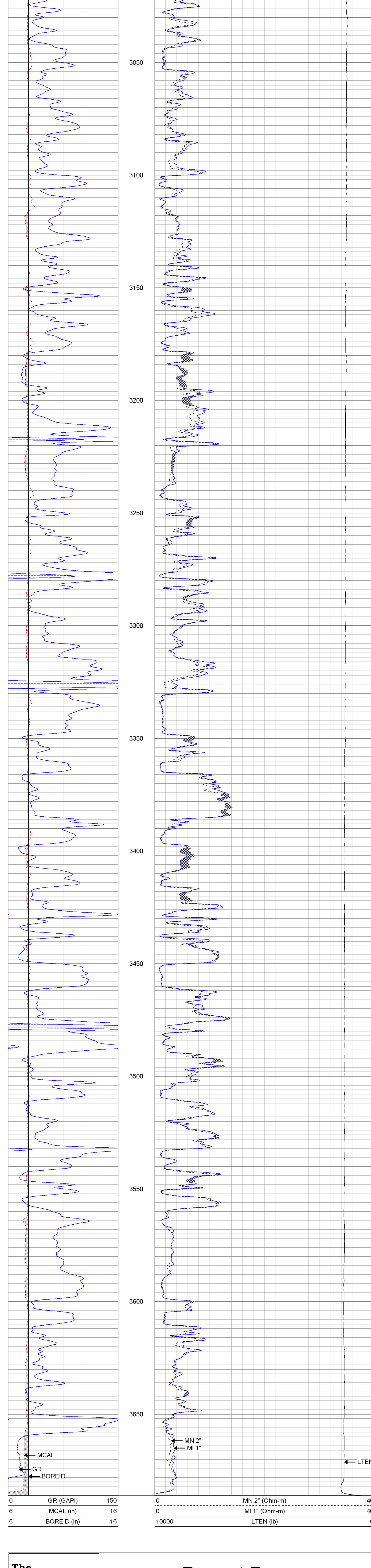
**Comments**

Thank you for using The Perforators LLC  
Hays, KS (785) 621-4604

**The Perforators** LLC **Main Pass**

Database File: jofhansen#1oh.db  
Dataset Pathname: pass6  
Presentation Format: kml  
Dataset Creation: Sun Jun 24 23:18:55 2012 by Log Open-Cased 100827  
Charted by: Depth in Feet scaled 1:240

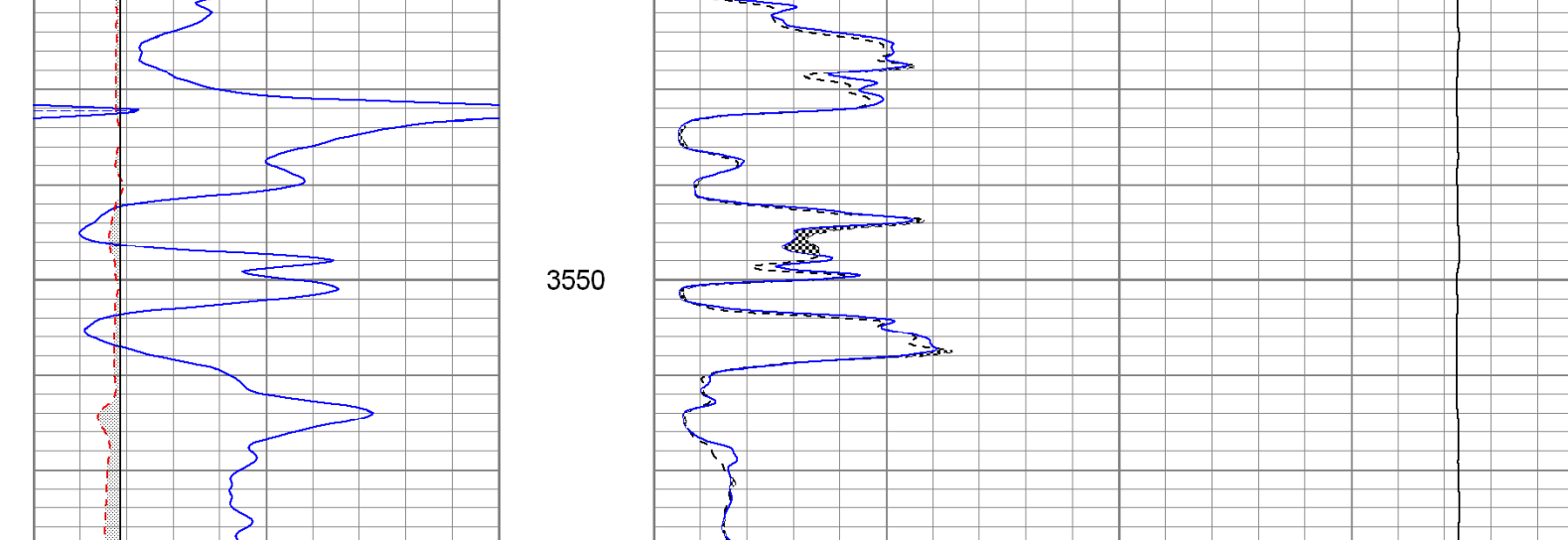
0	GR (GAPI)	150	0	MN 2" (Ohm-m)	40
6	MCAL (in)	16	0	MI 1" (Ohm-m)	40
6	BOREID (in)	16	10000	LTEN (lb)	0



**The Perforators** LLC **Repeat Pass**

Database File: jofhansen#1oh.db  
Dataset Pathname: pass5.1  
Presentation Format: kml  
Dataset Creation: Sun Jun 24 23:16:24 2012 by Calc Open-Cased 100827  
Charted by: Depth in Feet scaled 1:240

0	GR (GAPI)	150	0	MN 2" (Ohm-m)	40
6	MCAL (in)	16	0	MI 1" (Ohm-m)	40
6	BOREID (in)	16	10000	LTEN (lb)	0



**Calibration Report**

Database File: jofhansen#1oh.db  
Dataset Pathname: pass5  
Dataset Creation: Sun Jun 24 23:10:21 2012 by Log Open-Cased 100827

**Microlog Calibration Report**

Serial-Model: 1600-Pengo  
Performed: Wed May 30 19:47:44 2012

	Readings			References		Results	
	Zero	Cal		Zero	Cal	m	b
Normal	-0.0048	0.5892	V	0.0000	10.0000	Ohm-m	16.8352
Inverse	-0.0030	0.7660	V	0.0000	8.5000	Ohm-m	11.0526
Caliper	1.1428	2.4810	V	8.1000	14.0000	in	4.4087

**Gamma Ray Calibration Report**

Serial Number: 2000  
Tool Model: P2000  
Performed: Tue Jun 19 18:23:04 2012

Calibrator Value: 1.0 GAPI

Background Reading: 0.0 cps

Calibrator Reading: 1.0 cps

Sensitivity: 0.2200 GAPI/cps

Sensor	Offset (ft)	Schematic	Description	Len (ft)	OD (in)	Wt (lb)
GR	8.38		GR-P2000 (2000)	3.67	3.25	40.00
MN MI MCAL	1.30 1.30 1.30		ML-Pengo (1600)	6.96	3.50	100.00

Dataset: jofhansen#1oh.db: field/well/run1/pass5  
Total Length: 10.63 ft  
Total Weight: 140.00 lb  
O.D.: 3.50 in