



**COMPLETION
& PRODUCTION
SERVICES CO.**

**MICRO
LOG**

Company RED OAK ENERGY
Well COAKES/COLLINGWOOD UNIT # 1-22
Field WILDCAT
County WICHITA State KANSAS

Company RED OAK ENERGY
Well COAKES/COLLINGWOOD UNIT # 1-22
Field WILDCAT
County WICHITA
State KANSAS

Location: API #: 15-203-20262
2304' FNL & 1026' FWL
SEC 2 TWP 20S RGE 38W
Permanent Datum GROUND LEVEL Elevation 3408
Log Measured From KELLY BUSHING 11' A.G.L.
Drilling Measured From KELLY BUSHING
Other Services
CDL/CNL
DIL
Elevation
K.B. 3419
D.F.
G.L. 3408

Date	5-8-14
Run Number	TW0
Depth Driller	5100
Depth Logger	5100
Bottom Logged Interval	5097
Top Log Interval	2700
Casing Driller	351
Casing Logger	351
Bit Size	7.875
Type Fluid in Hole	CHEMICAL MUD
Density / Viscosity	9.4 / 58
pH / Fluid Loss	9.0 / 9.6
Source of Sample	FLOWLINE
Rm @ Meas. Temp	0.50 @ 74F
Rmf @ Meas. Temp	0.38 @ 74F
Rmc @ Meas. Temp	0.60 @ 74F
Source of Rmf / Rmc	MEASURED
Rm @ BHT	.290 @ 126F
Time Circulation Stopped	3 HOURS
Time Logger on Bottom	4:45 P.M.
Maximum Recorded Temperature	126F
Equipment Number	860
Location	HAYS, KS.
Recorded By	RUPP
Witnessed By	SCOTT BANKS

<<< Fold Here >>>

All interpretations are opinions based on inferences from electrical or other measurements and we cannot and do not guarantee the accuracy or correctness of any interpretation, and we shall not, except in the case of gross or willful negligence on our part, be liable or responsible for any loss, costs, damages, or expenses incurred or sustained by anyone resulting from any interpretation made by any of our officers, agents or employees. These interpretations are also subject to our general terms and conditions set out in our current Price Schedule.

Comments

NABORS COMPLETION & PRODUCTION SERVICES
785-628-6395
THANK YOU FOR YOUR BUSINESS
DIRECTIONS: SELKIRK EAST EDGE, 11.5S, 1E, 1/2S, E INTO.



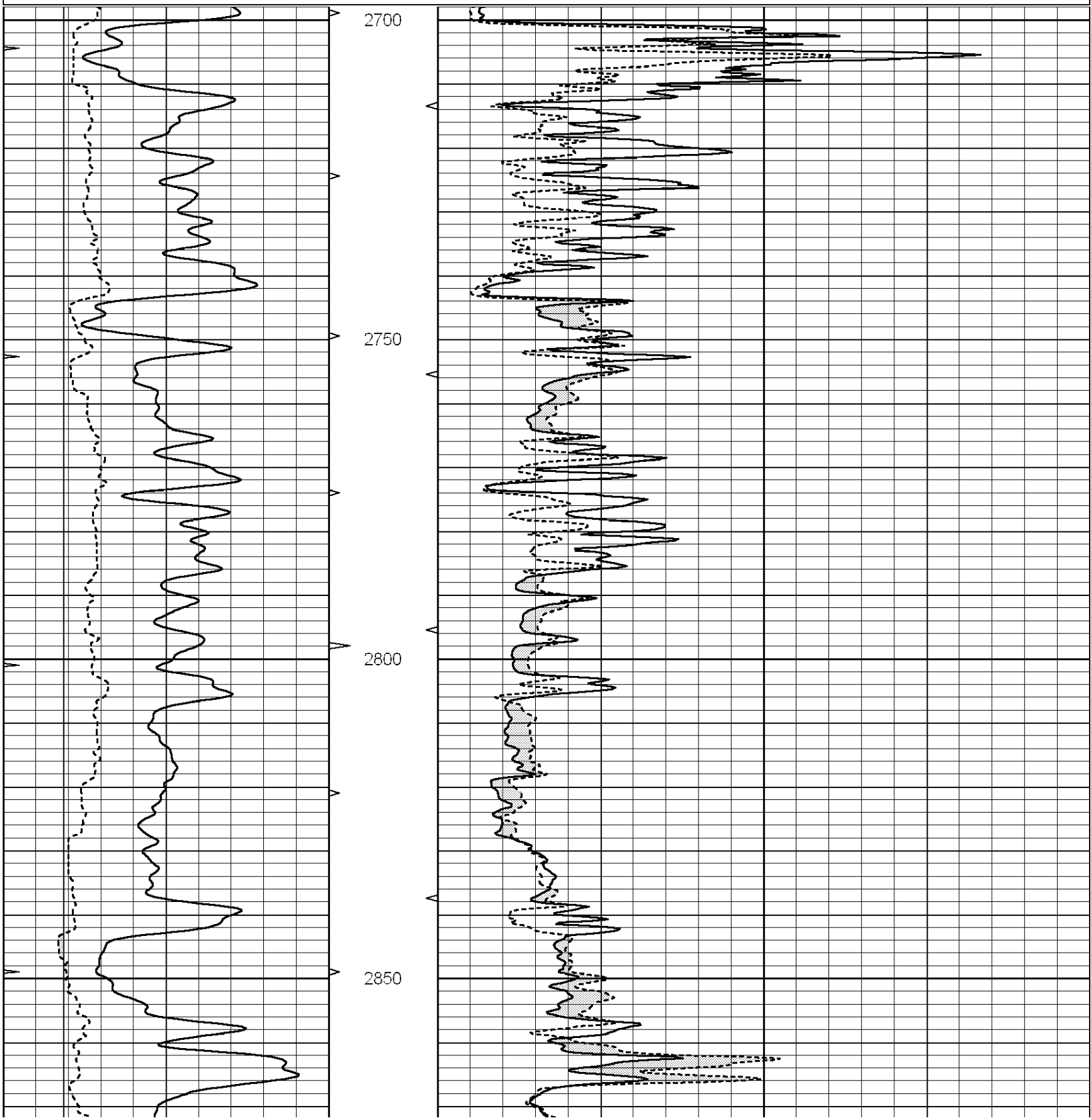
**COMPLETION
& PRODUCTION**

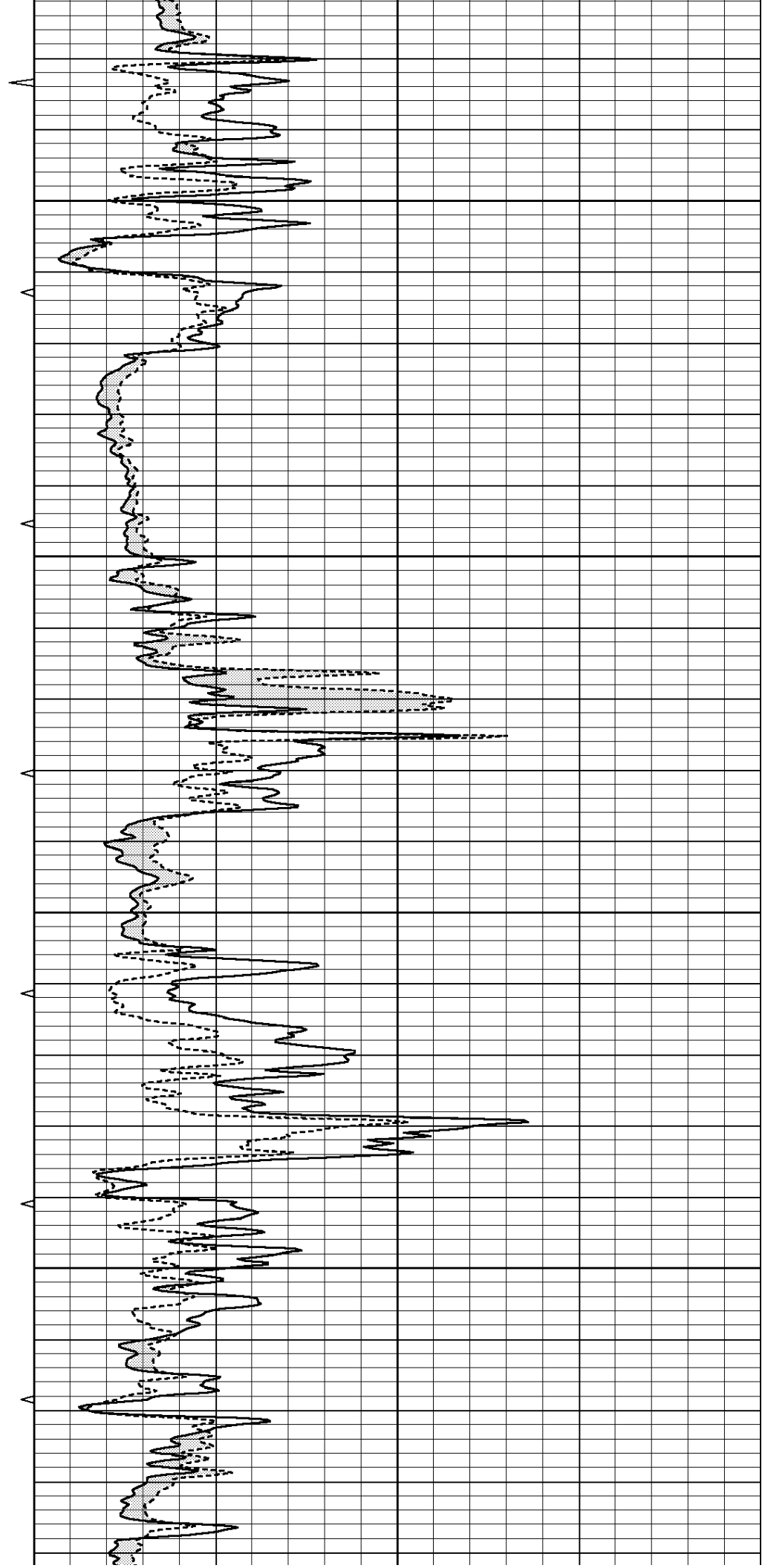
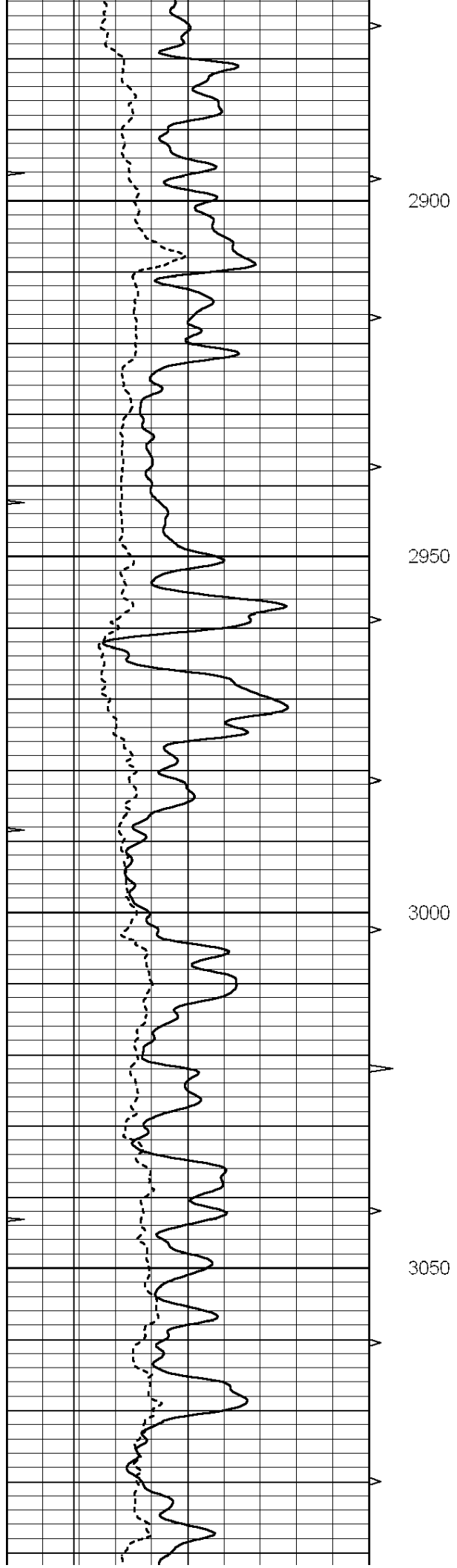
MAIN SECTION

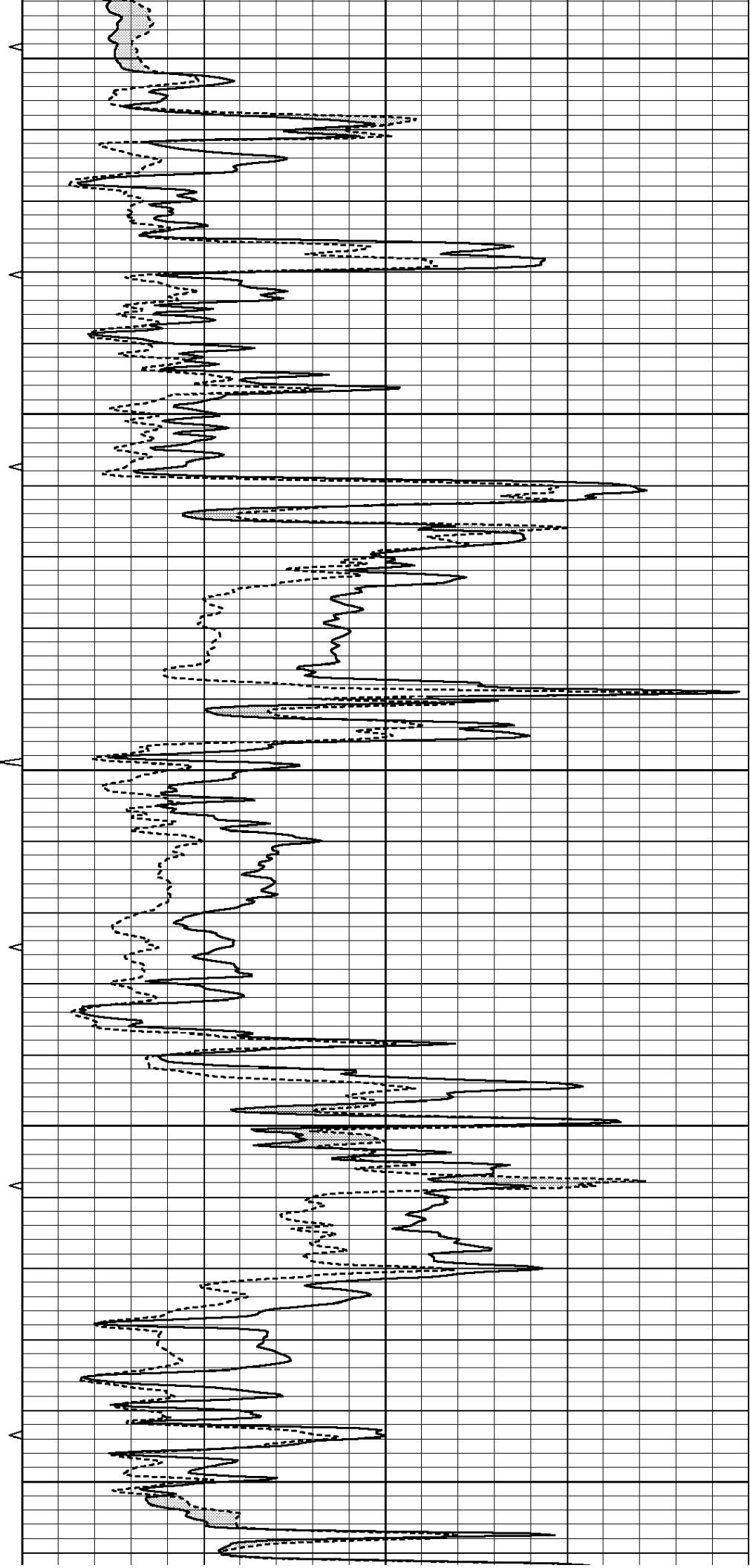
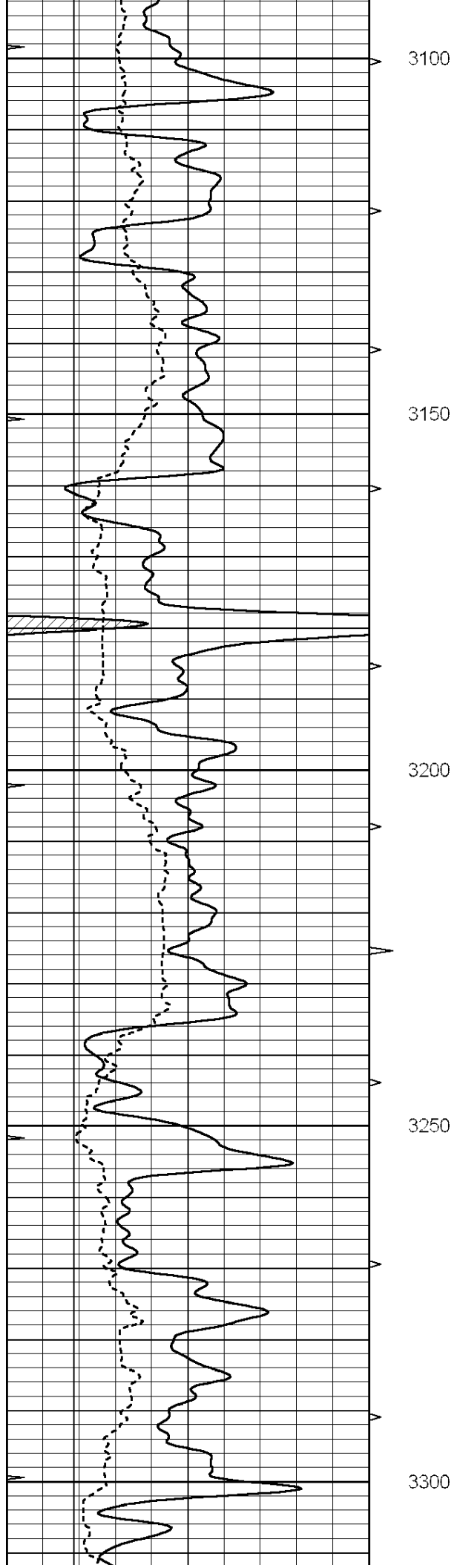
Database File: 24428ddn.db
 Dataset Pathname: pass8.1A
 Presentation Format: _micro
 Dataset Creation: Thu May 08 23:08:49 2014
 Charted by: Depth in Feet scaled 1:240

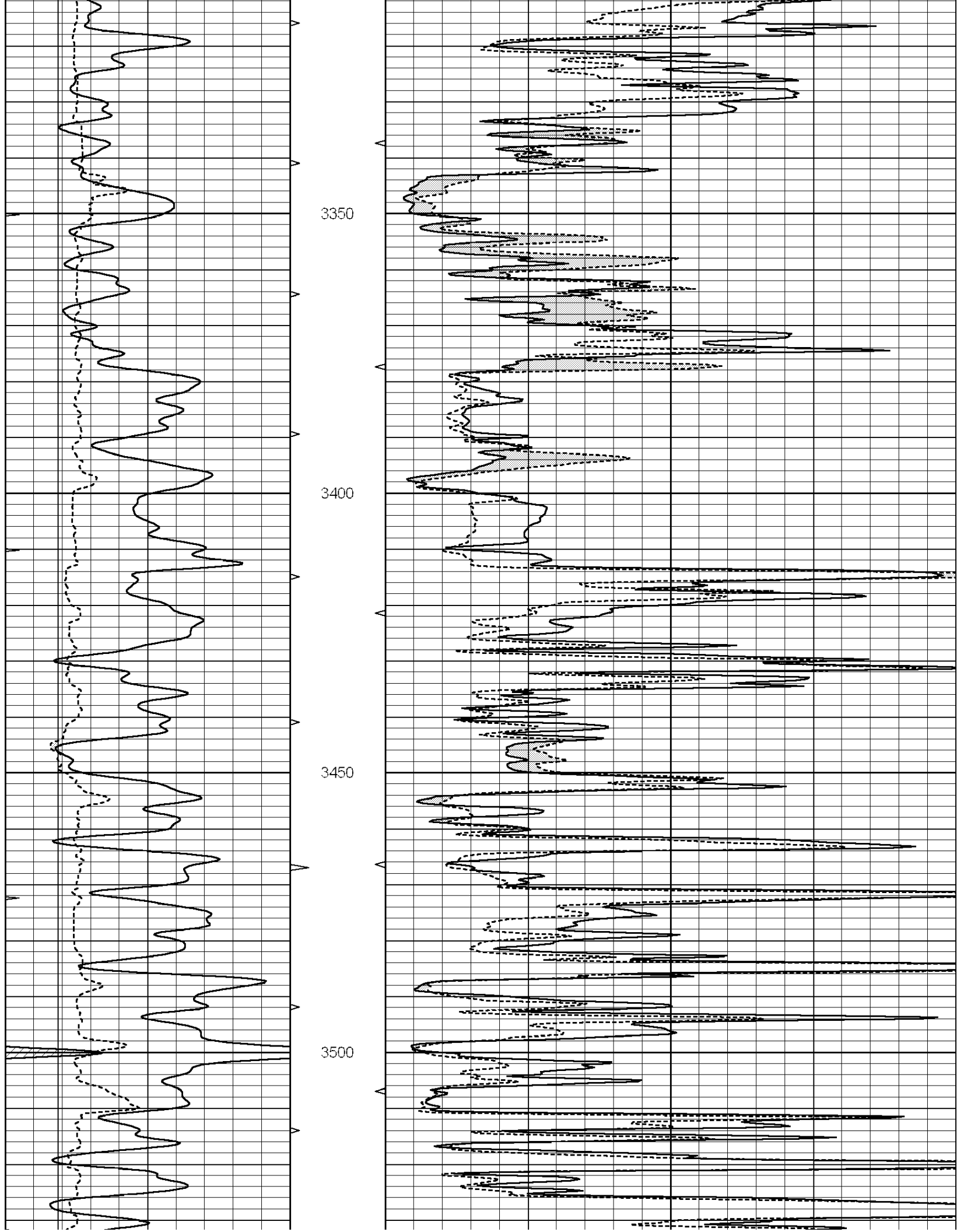
0	GAMMA RAY (GAPI)	150
6	MELCAL (in)	16
0	MINMK	20

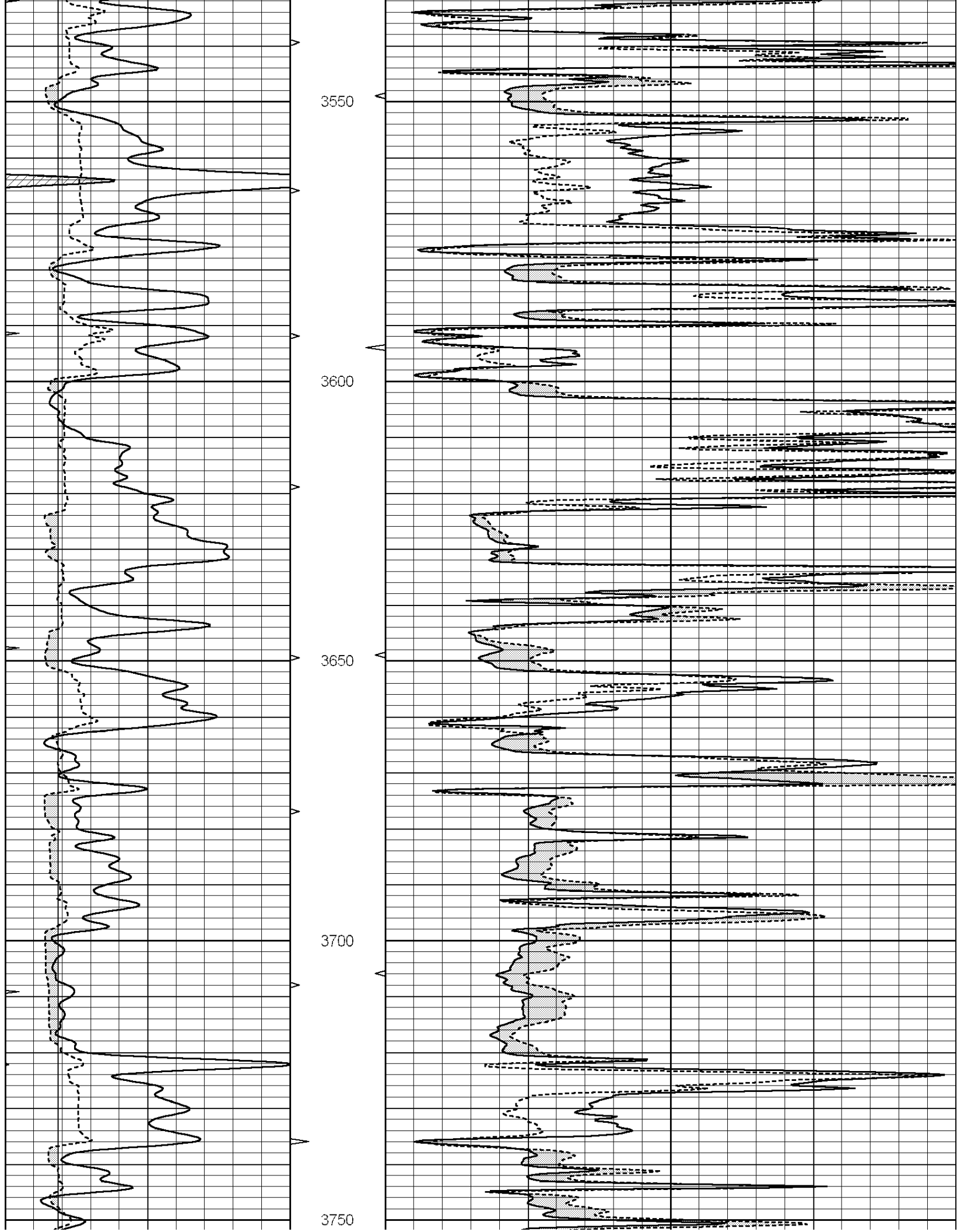
0	MEL1.5 (Ohm-m)	40
0	MEL2.0 (Ohm-m)	40

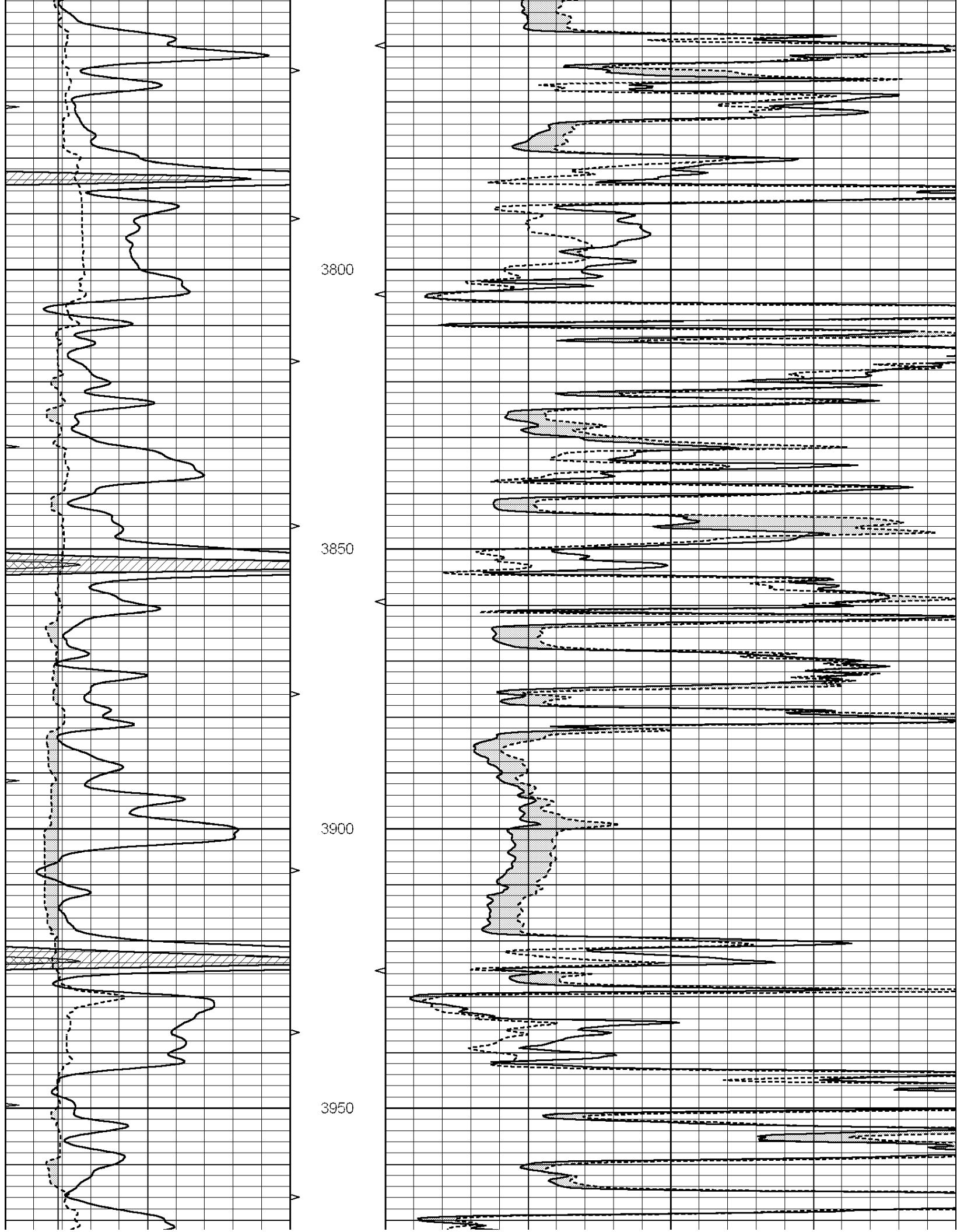


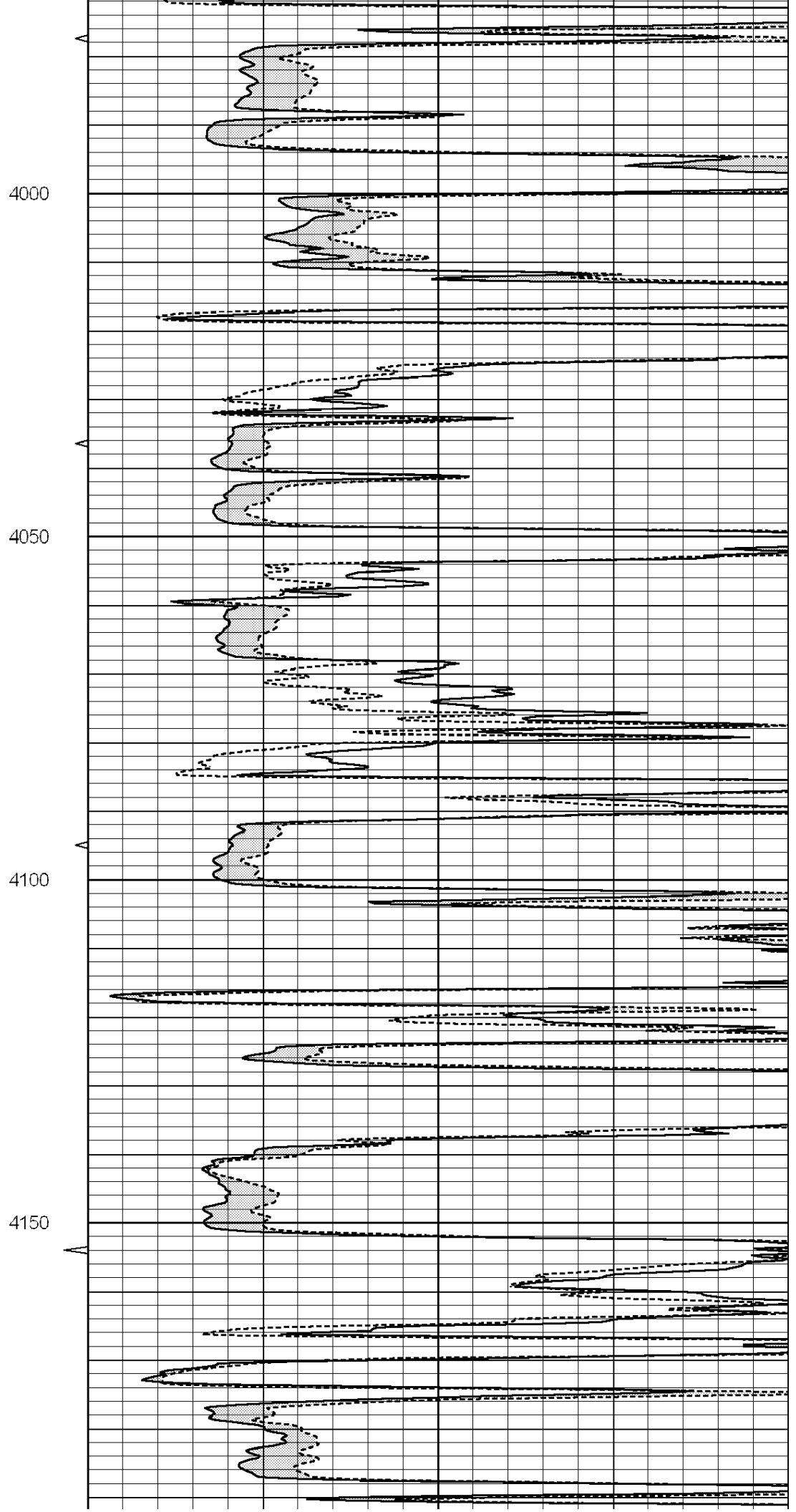
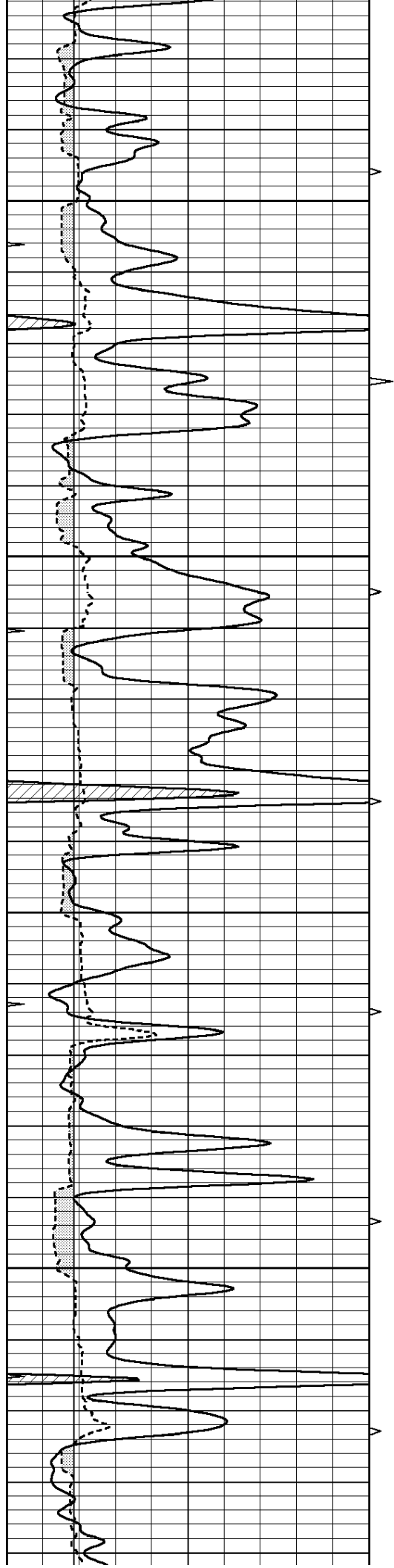


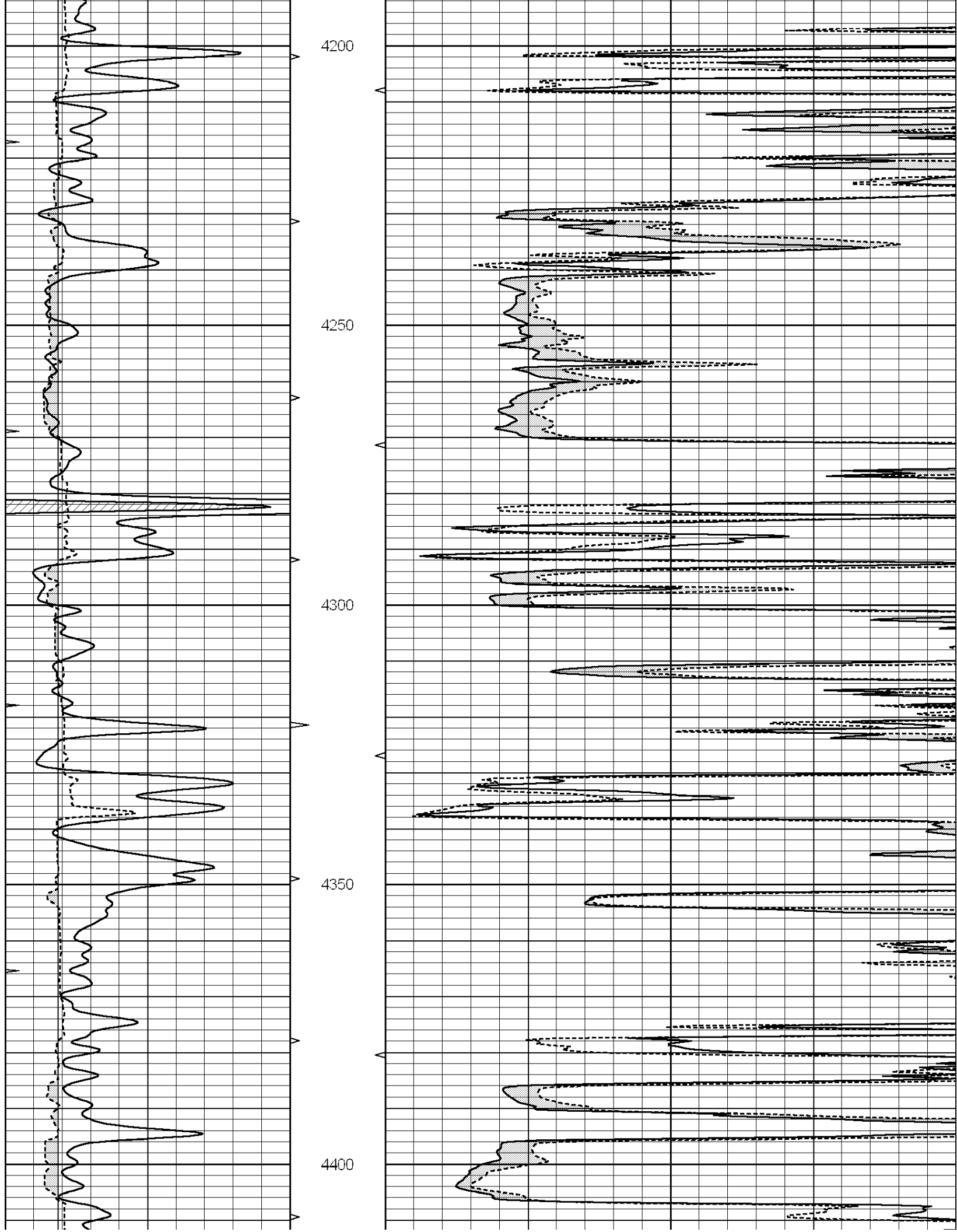


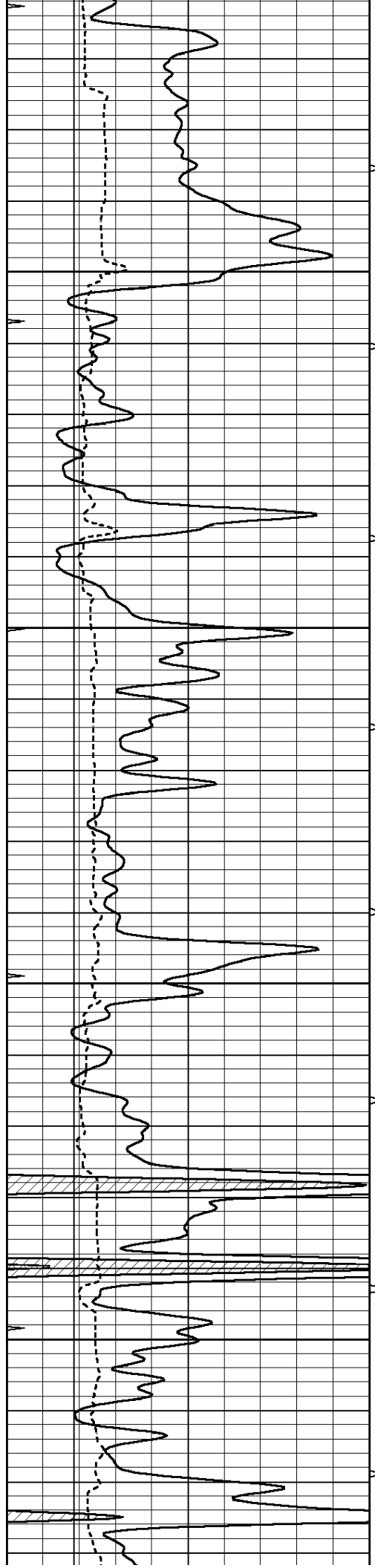










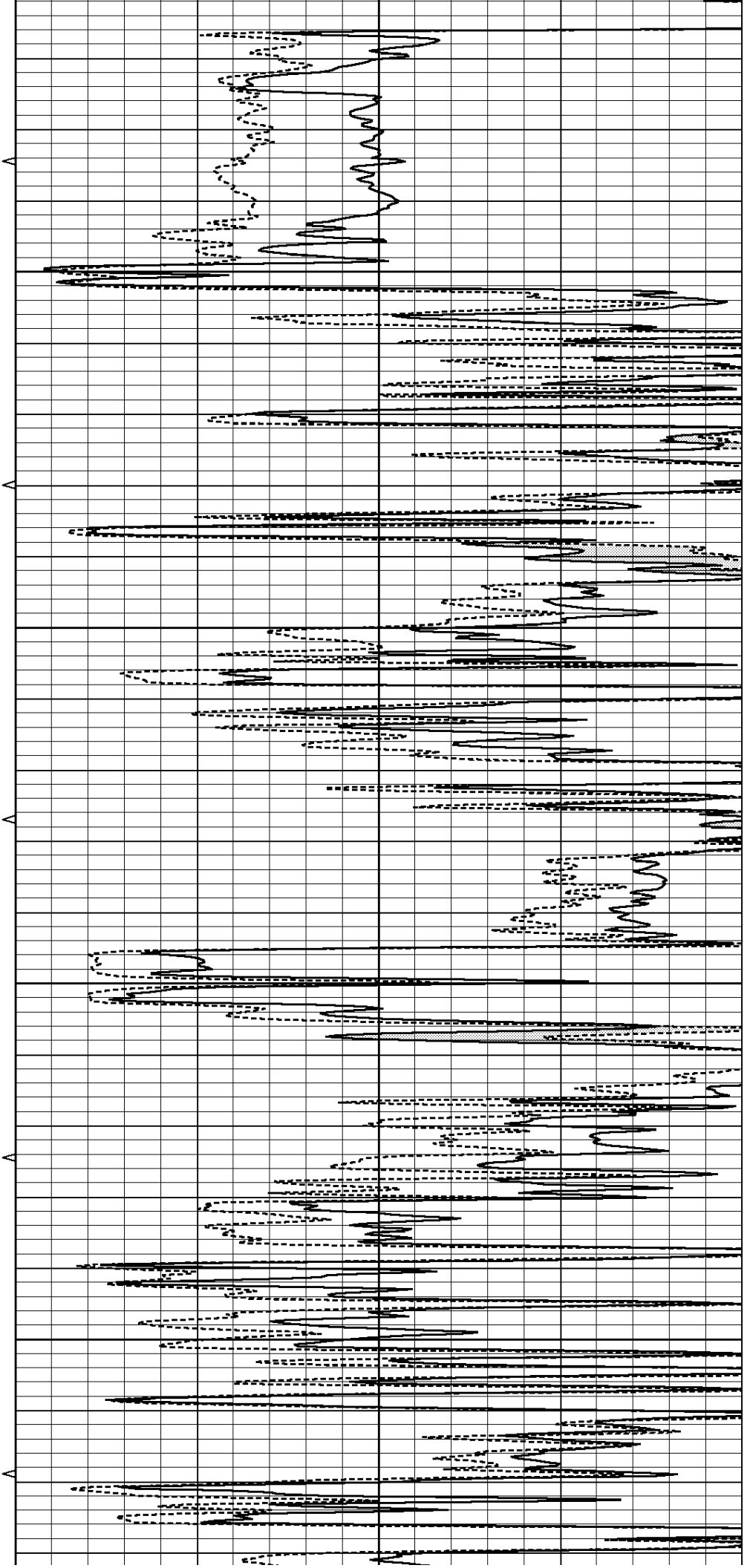


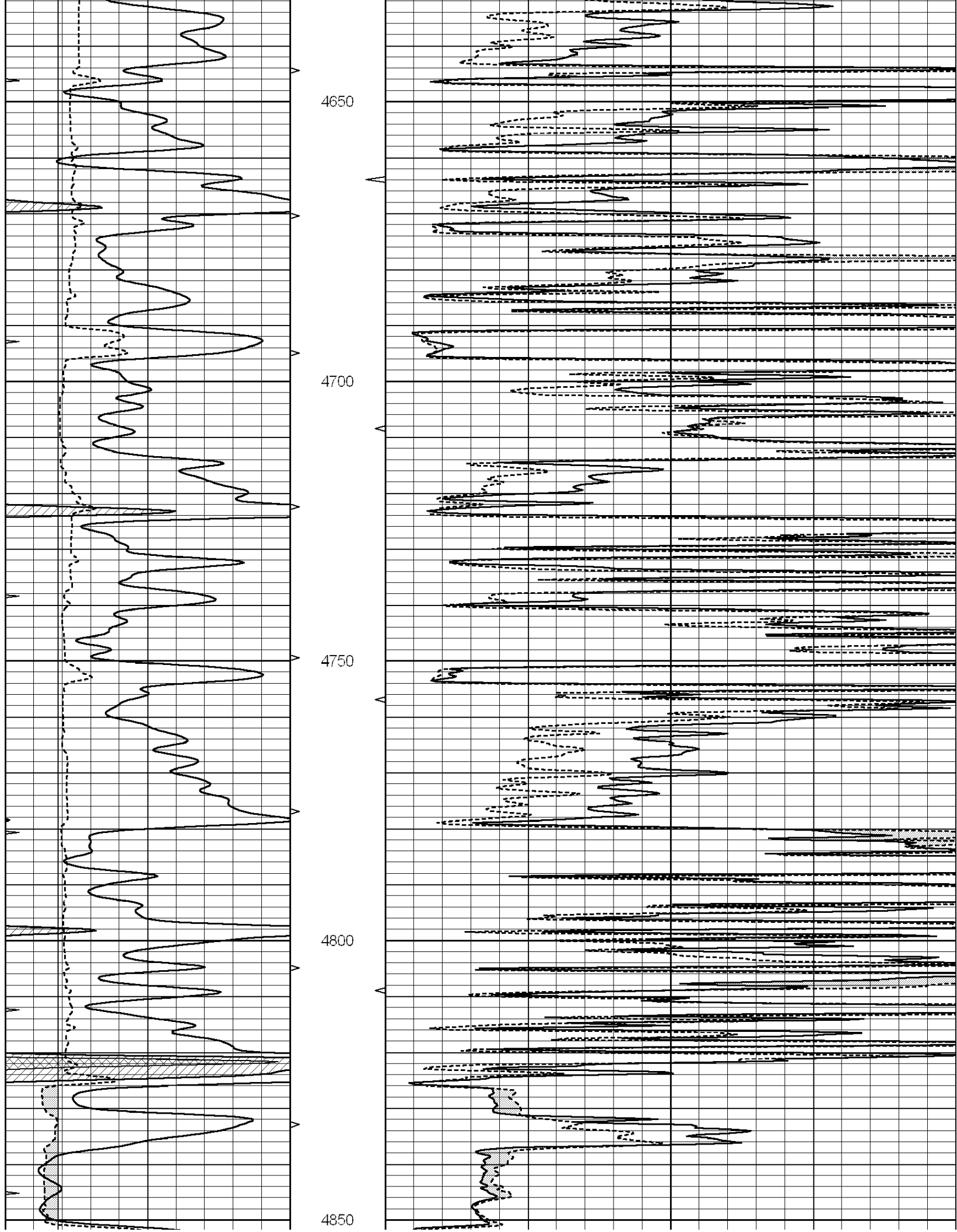
4450

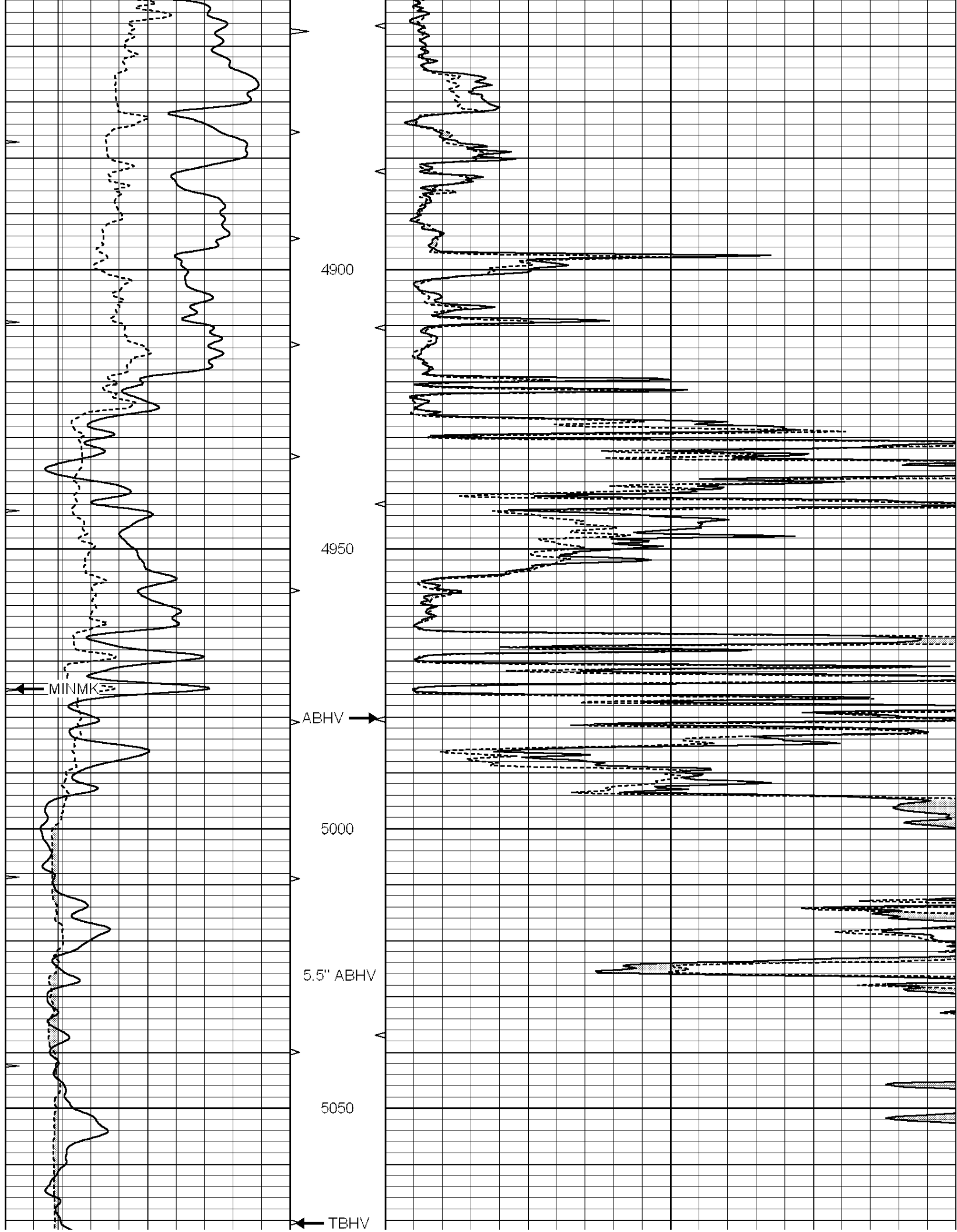
4500

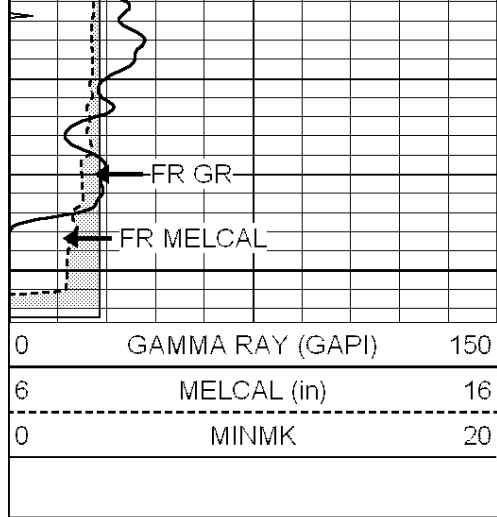
4550

4600

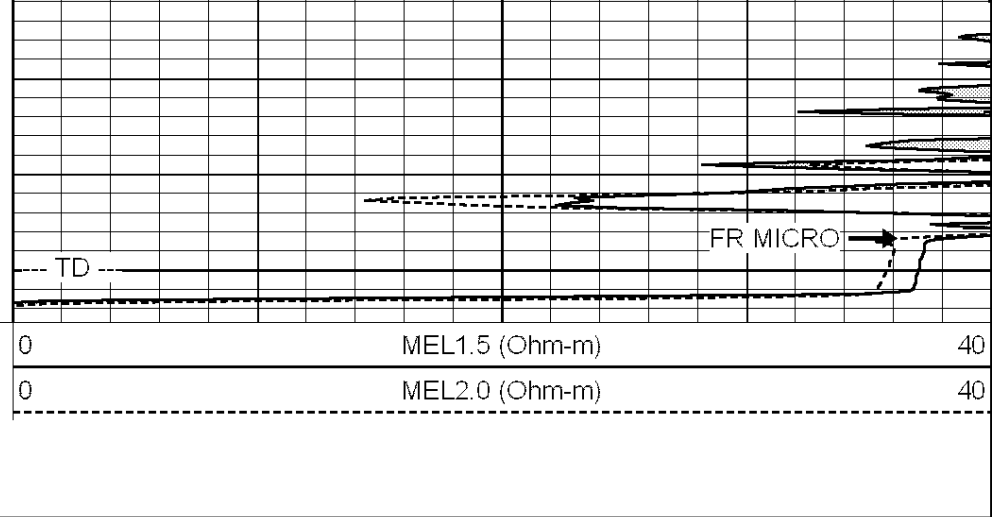








5100

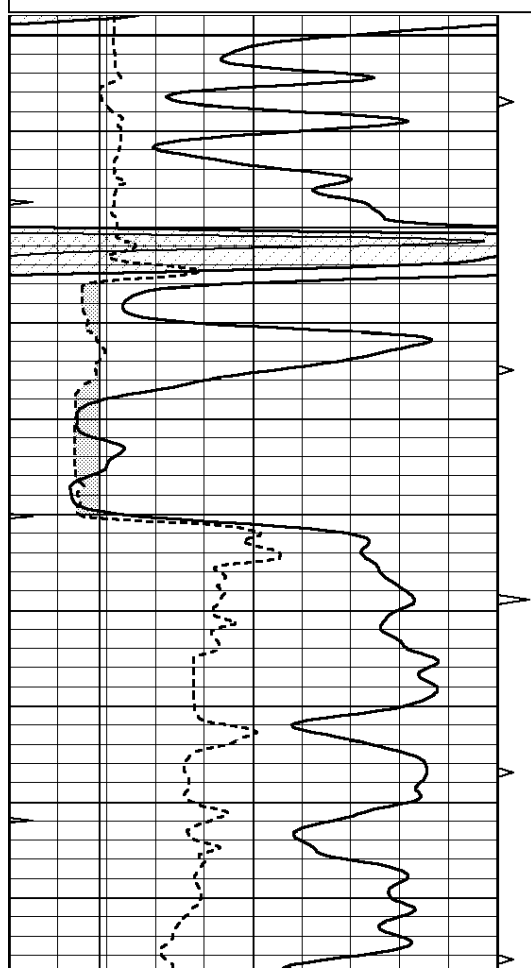


REPEAT SECTION

Database File: 24428ddn.db
 Dataset Pathname: pass7.1
 Presentation Format: _micro
 Dataset Creation: Thu May 08 22:07:28 2014 by Calc Open-Cased 090629
 Charted by: Depth in Feet scaled 1:240

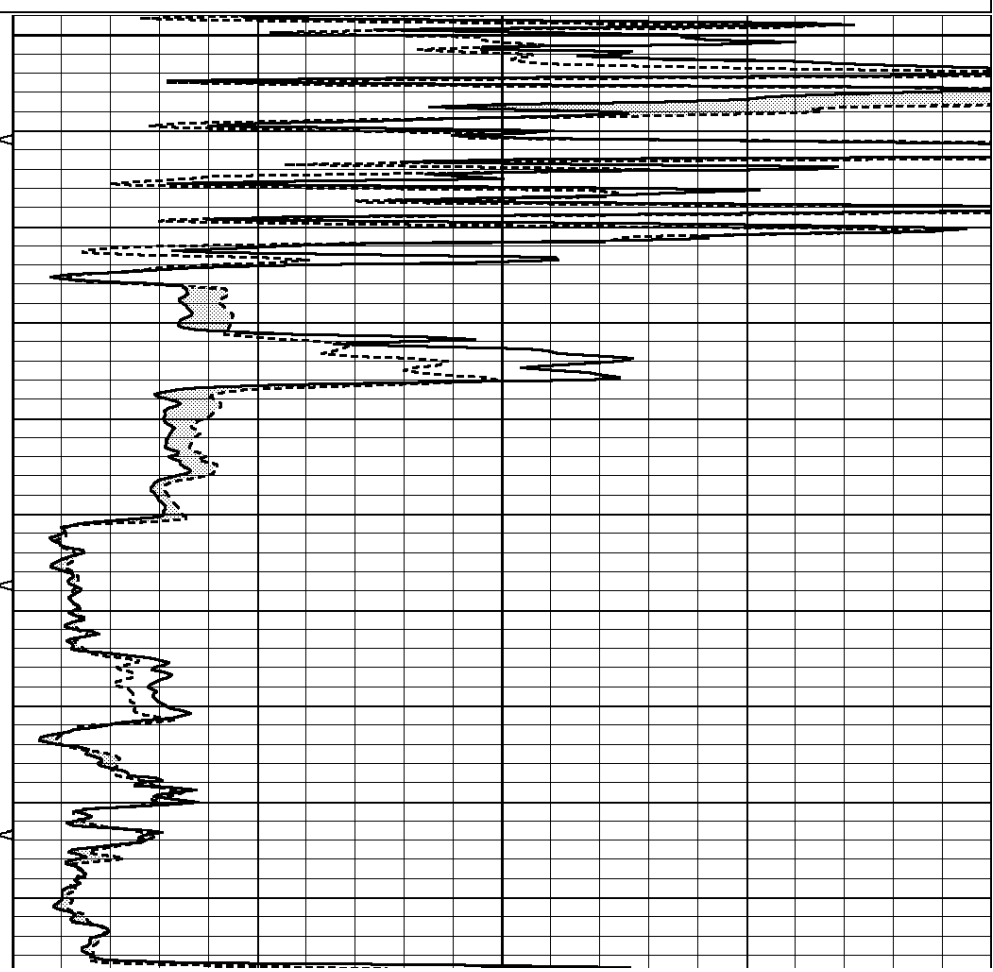
0	GAMMA RAY (GAPI)	150
6	MELCAL (in)	16
0	MINMK	20

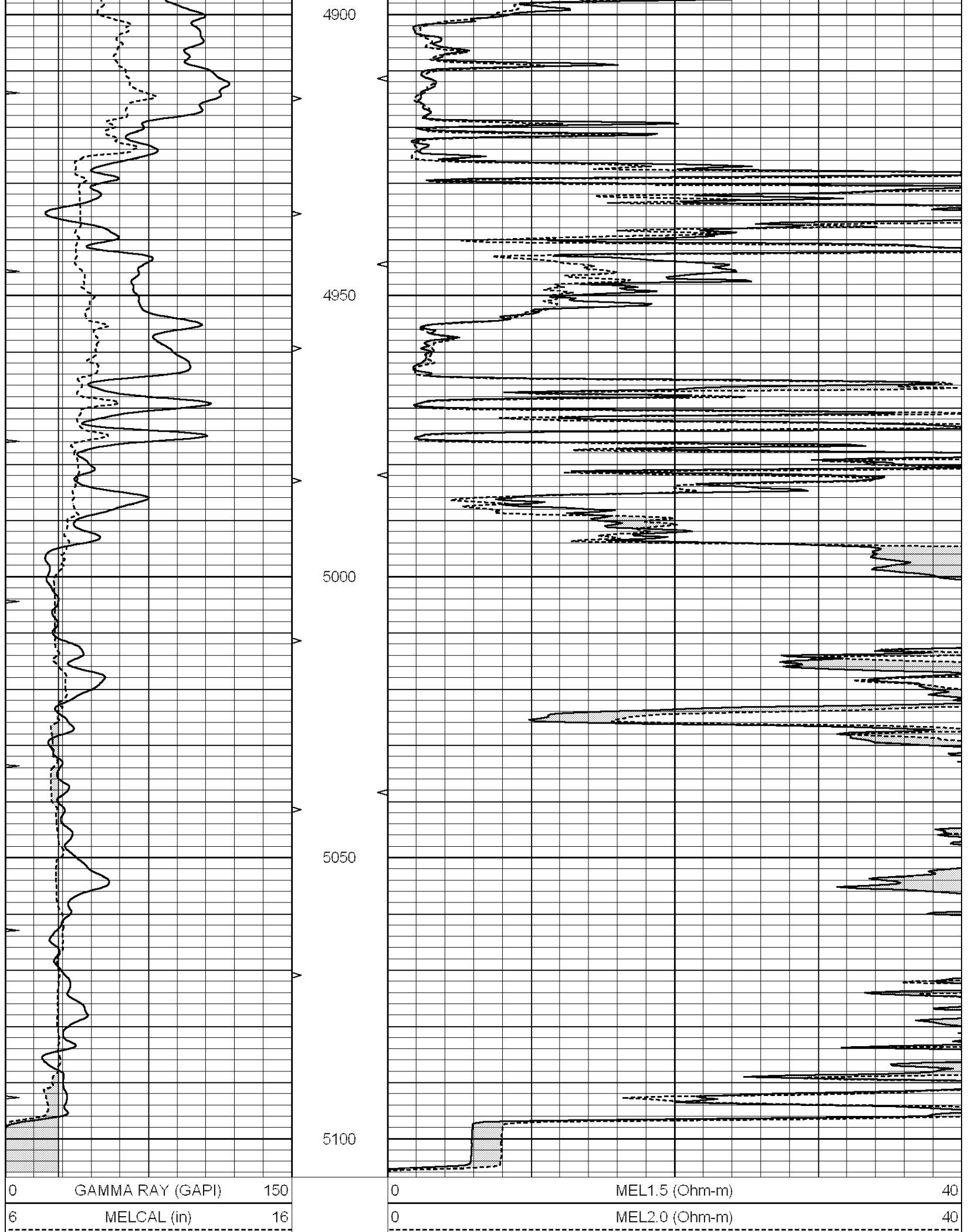
0	MEL1.5 (Ohm-m)	40
0	MEL2.0 (Ohm-m)	40



4800

4850





0	GAMMA RAY (GAPI)	150
6	MELCAL (in)	16

0	MEL1.5 (Ohm-m)	40
0	MEL2.0 (Ohm-m)	40

Calibration Report

Database File: 24428ddn.db
 Dataset Pathname: pass8.1A
 Dataset Creation: Thu May 08 23:08:49 2014

MICRO Calibration Report

Serial Number: MICRO4
 Tool Model: PROBE
 Performed: Thu May 08 22:03:47 2014

Caliper Calibration: Gain=2.847 Offset=-9.300

	Low Cal	High Cal
References	8.600	14.000
Readings	5.934	7.767

1.5" Calibration: Gain=42.000 Offset=-0.800

	Low Cal	High Cal
References	0.000	20.000
Readings	0.013	1.547

2" Calibration: Gain=45.000 Offset=-0.600

	Low Cal	High Cal
References	0.000	20.000
Readings	0.017	1.202

Gamma Ray Calibration Report

Serial Number: GR2
 Tool Model: OPEN
 Performed: Thu May 08 22:21:12 2014

Calibrator Value: 200.0 GAPI

Background Reading:	0.0	cps
Calibrator Reading:	740.0	cps

Sensitivity: 0.3700 GAPI/cps