

**COMPLETION
& PRODUCTION
SERVICES CO.**

**COMPENSATED
DENSITY / NEUTRON
LOG**

Company RED OAK ENERGY
Well COAKES/COLLINGWOOD UNIT # 1-22
Field WILDCAT
County WICHITA
State KANSAS

Company RED OAK ENERGY
Well COAKES/COLLINGWOOD UNIT # 1-22
Field WILDCAT
County WICHITA State KANSAS

Location: API #: 15-203-20262
2304' FNL & 1026' FWL
SEC 2 TWP 20S RGE 38W
Permanent Datum GROUND LEVEL Elevation 3408
Log Measured From KELLY BUSHING 11' A.G.L.
Drilling Measured From KELLY BUSHING
Other Services
DIL
MICRO
Elevation
K.B. 3419
D.F.
G.L. 3408

| | | | |
|------------------------------|--------------|--|--|
| Date | 5-8-14 | | |
| Run Number | ONE | | |
| Depth Driller | 5100 | | |
| Depth Logger | 5100 | | |
| Bottom Logged Interval | 5076 | | |
| Top Log Interval | 2700 | | |
| Casing Driller | 351 | | |
| Casing Logger | 351 | | |
| Bit Size | 7.875 | | |
| Type Fluid in Hole | CHEMICAL MUD | | |
| Density / Viscosity | 9.4 / 58 | | |
| pH / Fluid Loss | 9.0 / 9.6 | | |
| Source of Sample | FLOWLINE | | |
| Rim @ Meas. Temp | 0.50 @ 74F | | |
| Rmf @ Meas. Temp | 0.38 @ 74F | | |
| Rmc @ Meas. Temp | 0.60 @ 74F | | |
| Source of Rmf / Rmc | MEASURED | | |
| Rim @ BHT | .290 @ 126F | | |
| Time Circulation Stopped | 3 HOURS | | |
| Time Logger on Bottom | 4:45 P.M. | | |
| Maximum Recorded Temperature | 126F | | |
| Equipment Number | 860 | | |
| Location | HAYS, KS. | | |
| Recorded By | RUPP | | |
| Witnessed By | SCOTT BANKS | | |

<<< Fold Here >>>

All interpretations are opinions based on inferences from electrical or other measurements and we cannot and do not guarantee the accuracy or correctness of any interpretation, and we shall not, except in the case of gross or willful negligence on our part, be liable or responsible for any loss, costs, damages, or expenses incurred or sustained by anyone resulting from any interpretation made by any of our officers, agents or employees. These interpretations are also subject to our general terms and conditions set out in our current Price Schedule.

Comments

NABORS COMPLETION & PRODUCTION SERVICES
785-628-6395
THANK YOU FOR YOUR BUSINESS
DIRECTIONS: SELKIRK EAST EDGE, 11.5S, 1E, 1/2S, E INTO.

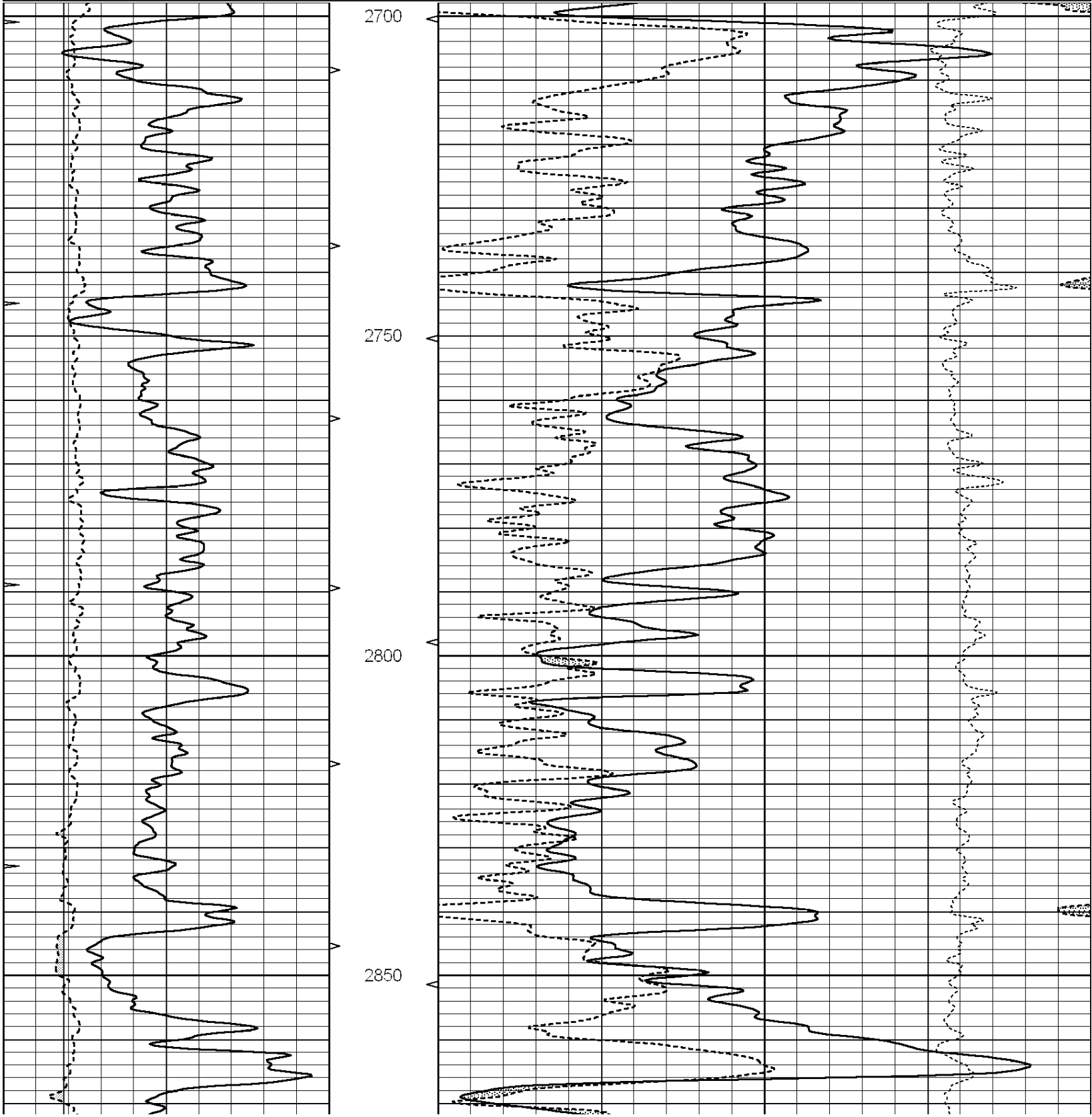


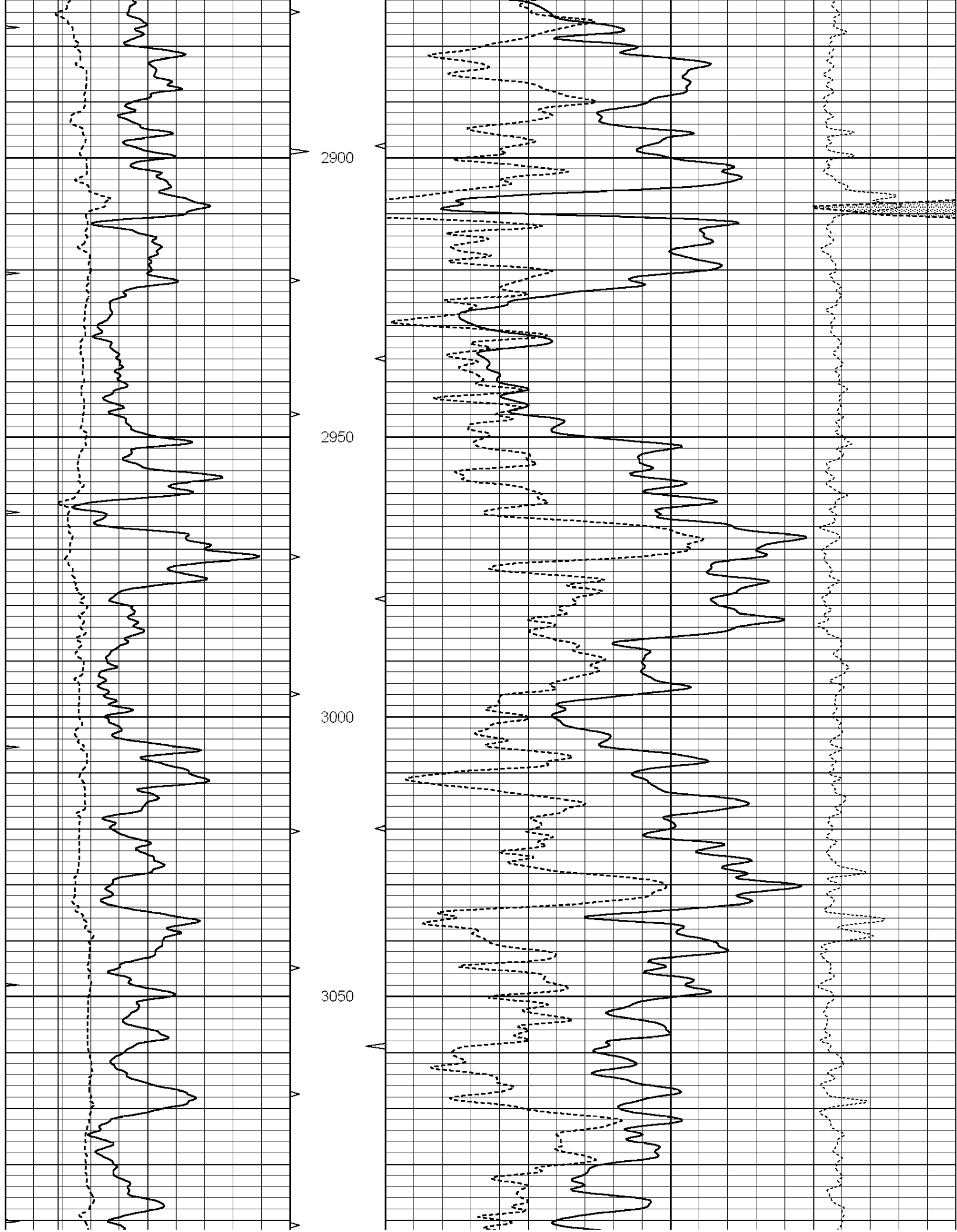
**COMPLETION
& PRODUCTION**

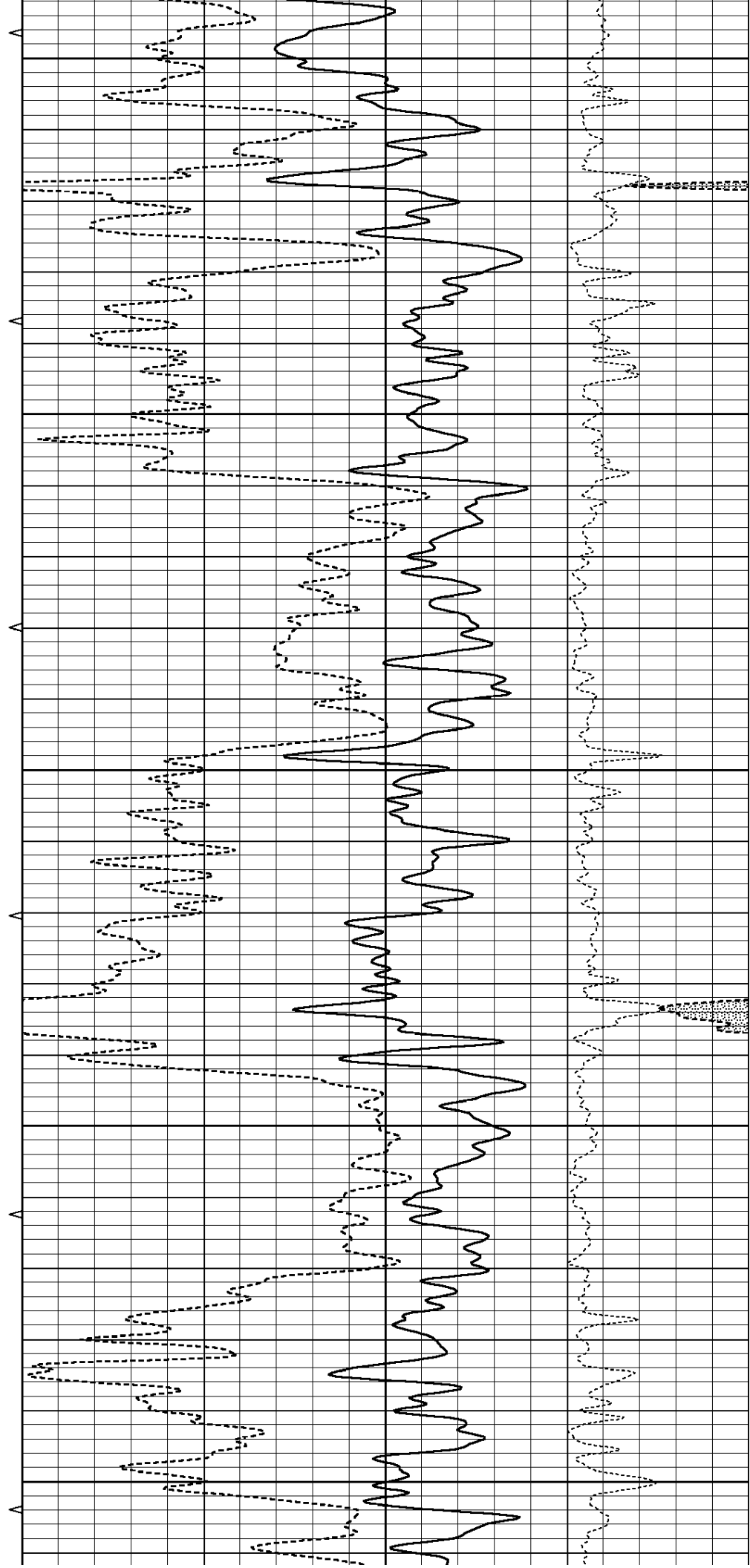
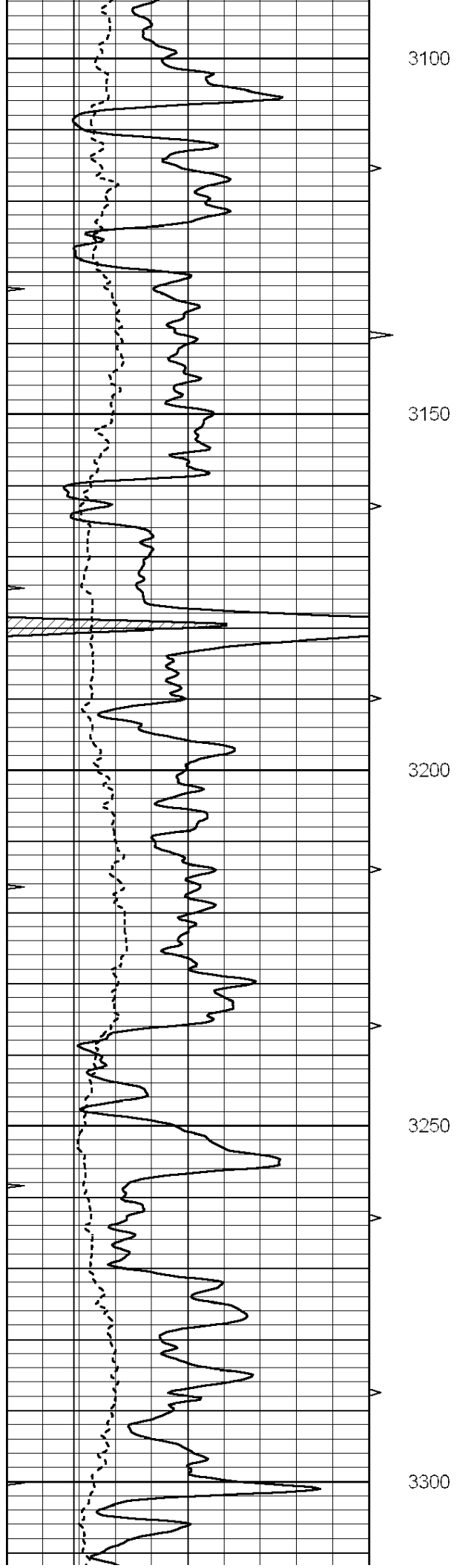
MAIN SECTION

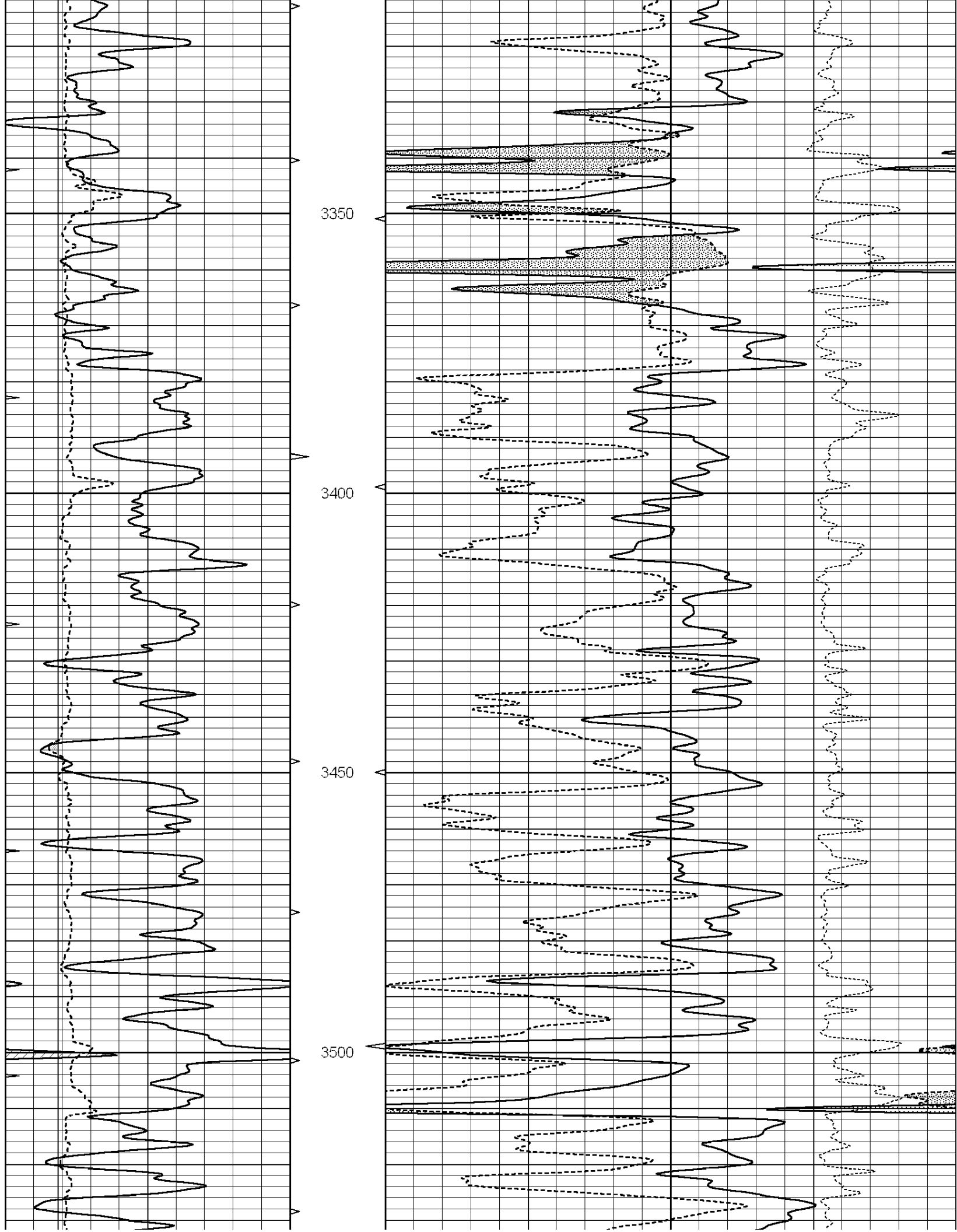
Database File: 24428ddn.db
 Dataset Pathname: pass5.1A
 Presentation Format: _den_neu
 Dataset Creation: Thu May 08 20:07:43 2014
 Charted by: Depth in Feet scaled 1:240

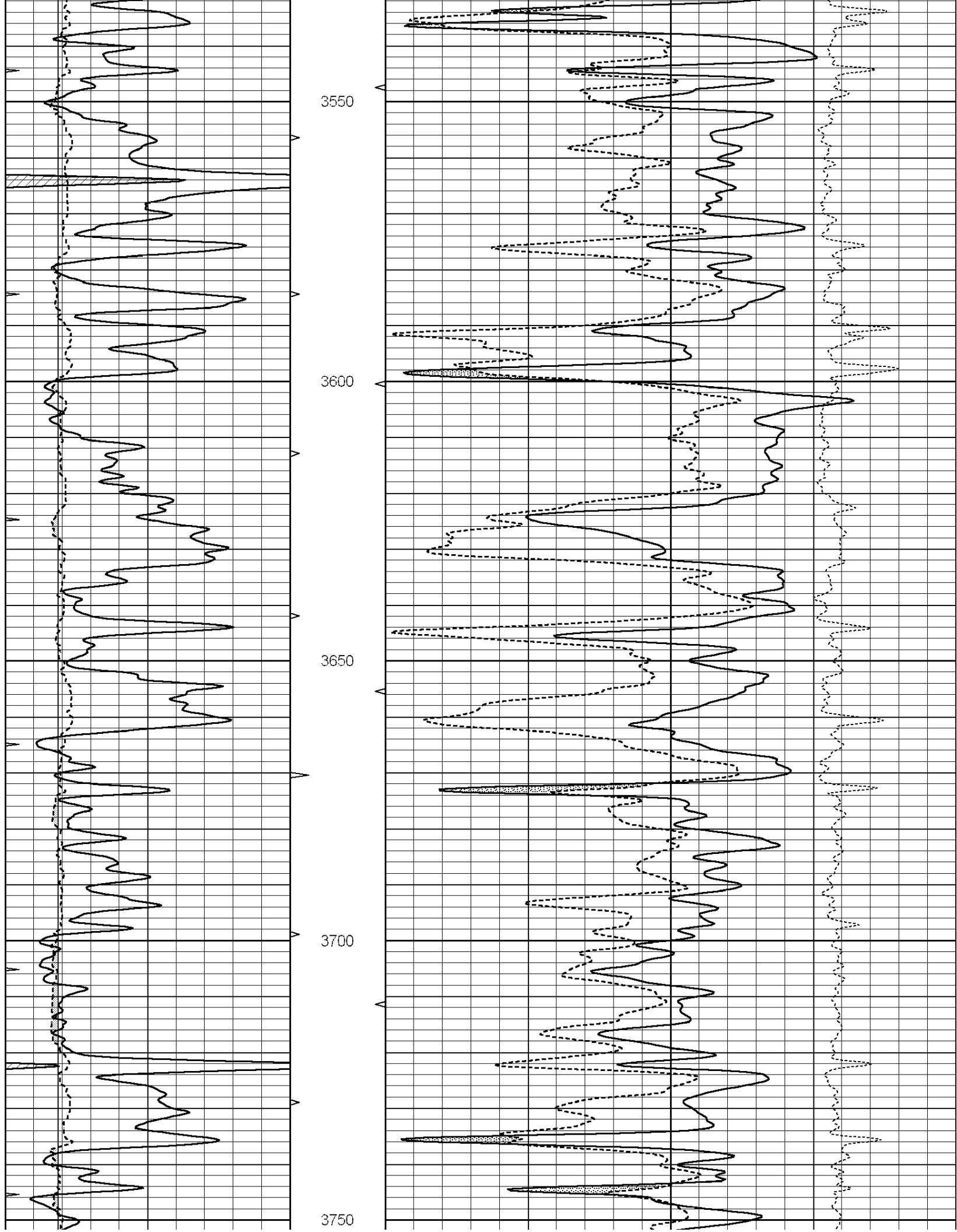
| | | | | | | |
|---|------------------|-----|----------|------|--------------------------|-----|
| 0 | GAMMA RAY (GAPI) | 150 | ABHV | 30 | COMPENSATED DENSITY (pu) | -10 |
| 6 | CALIPER (in) | 16 | 10 (ft3) | 0 30 | COMPENSATED NEUTRON (pu) | -10 |
| 0 | MINMK | 20 | TBHV | | -0.5 CORRECTION (g/cc) | 0.5 |
| | | | 0 (ft3) | 10 | | |

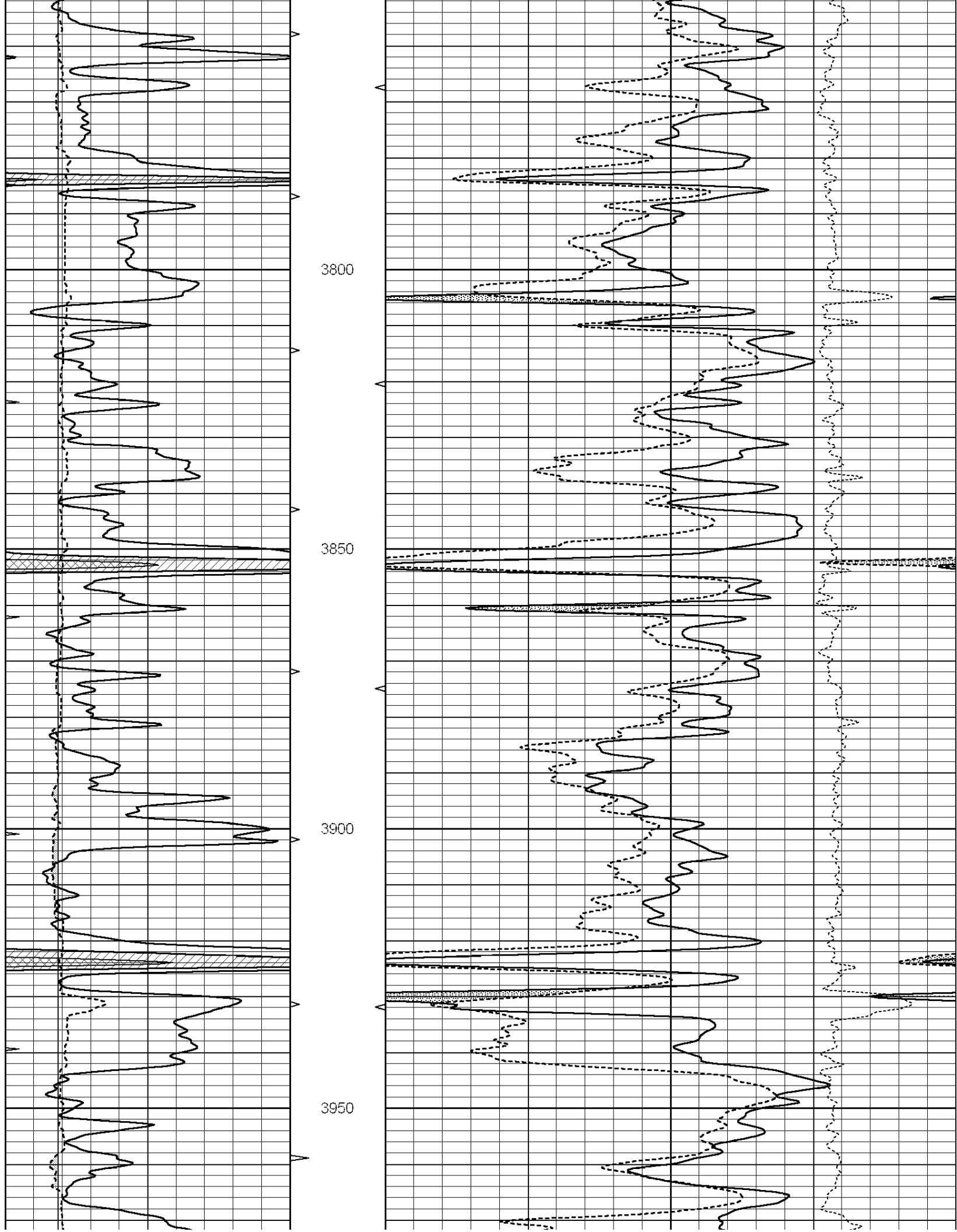


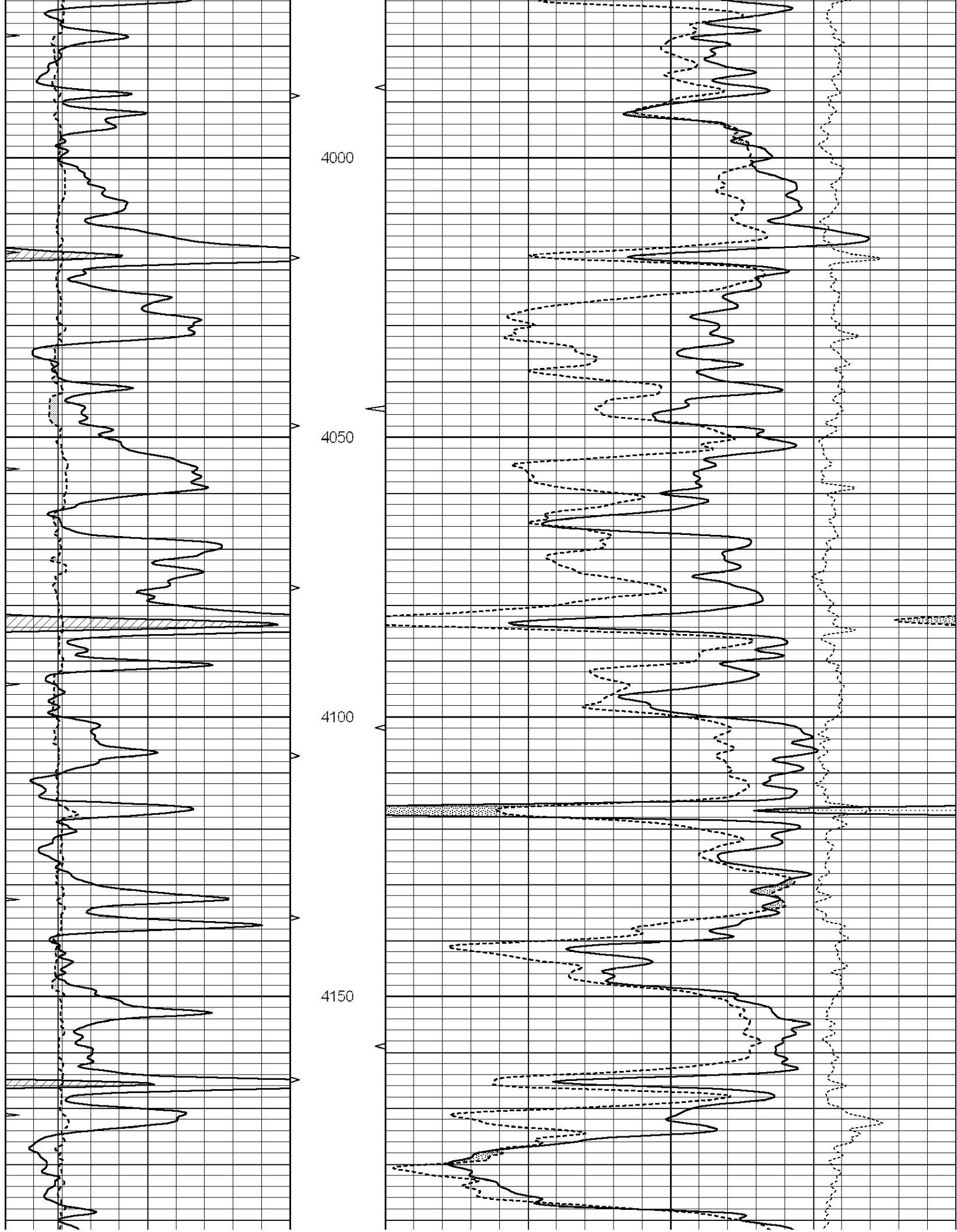


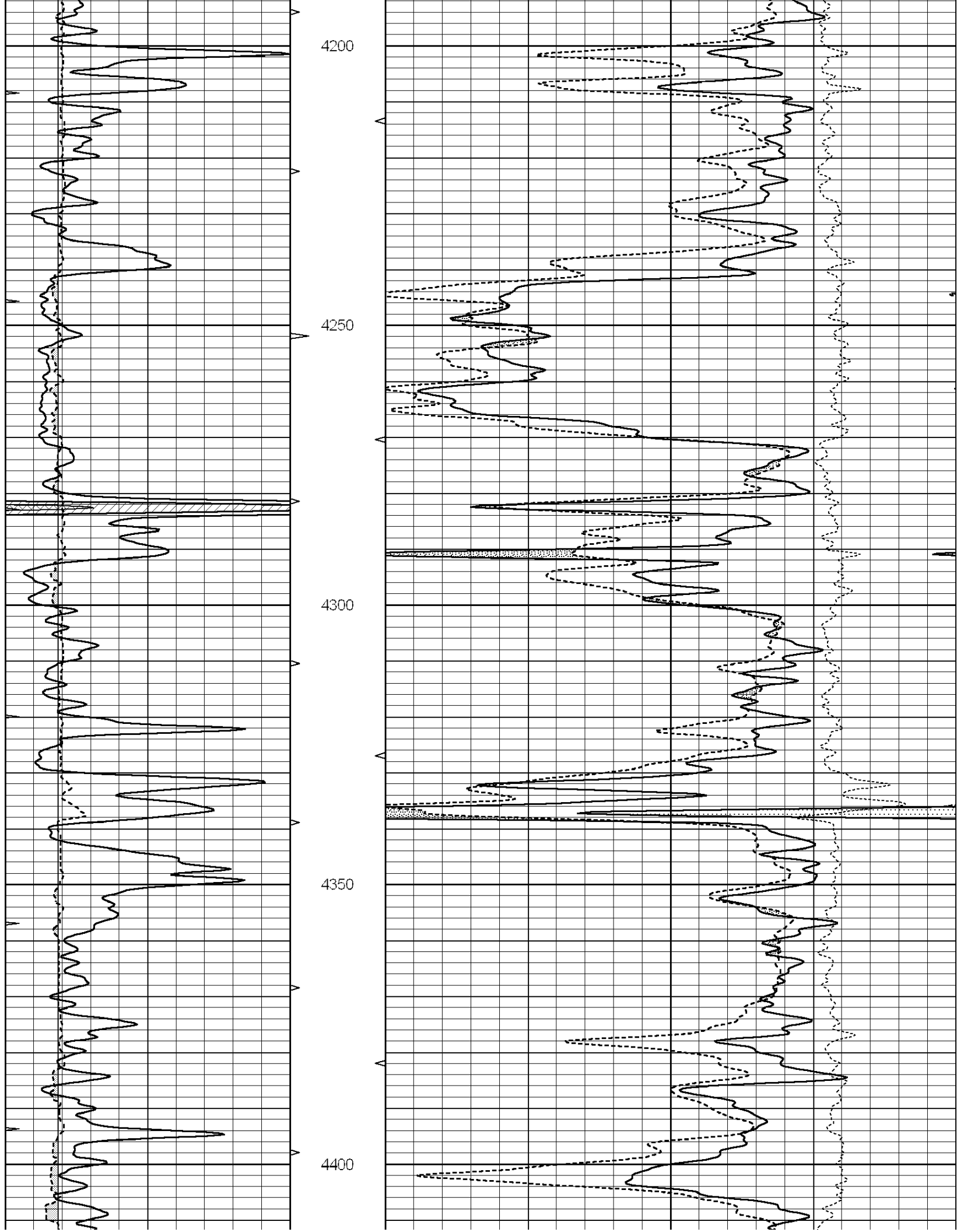


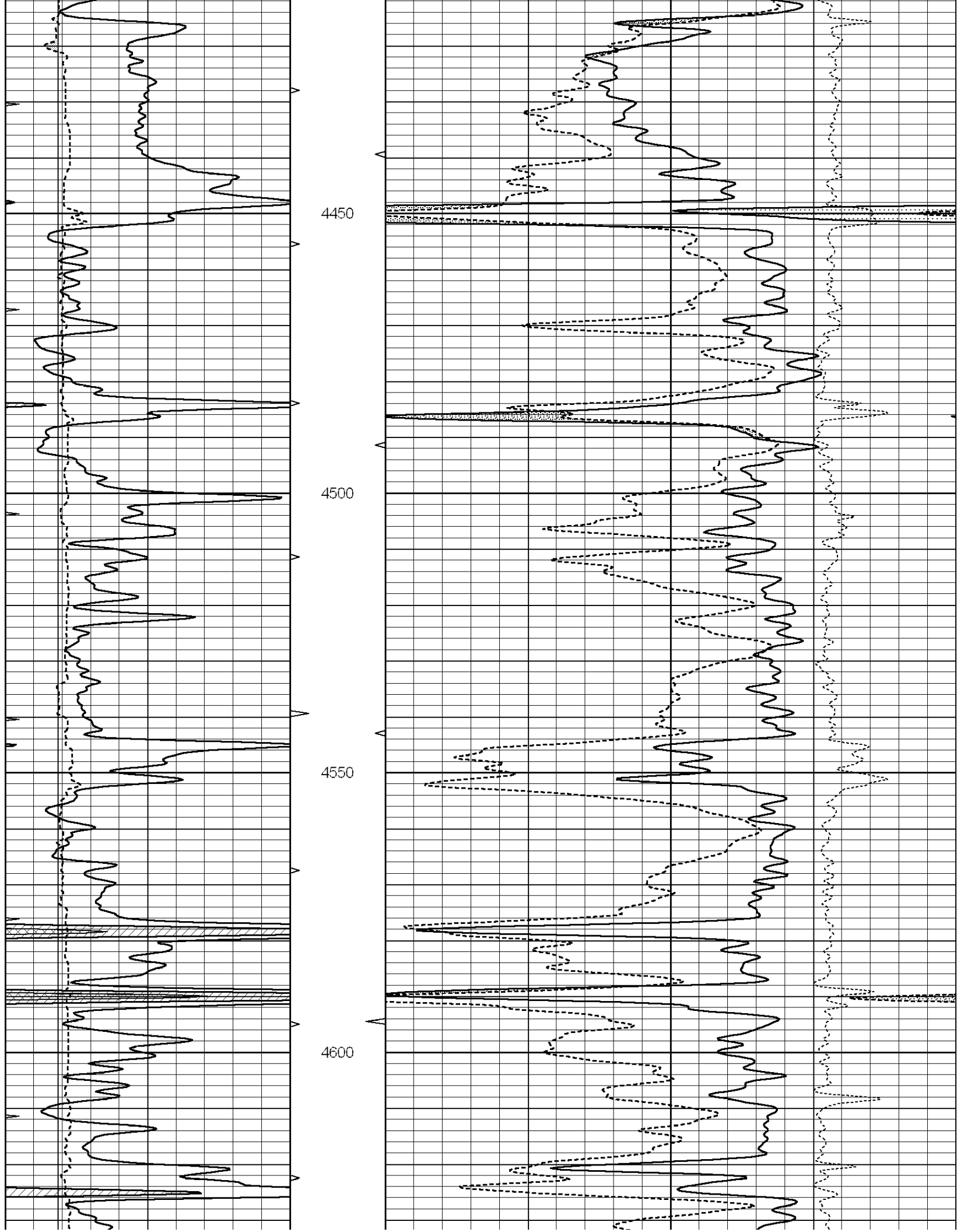


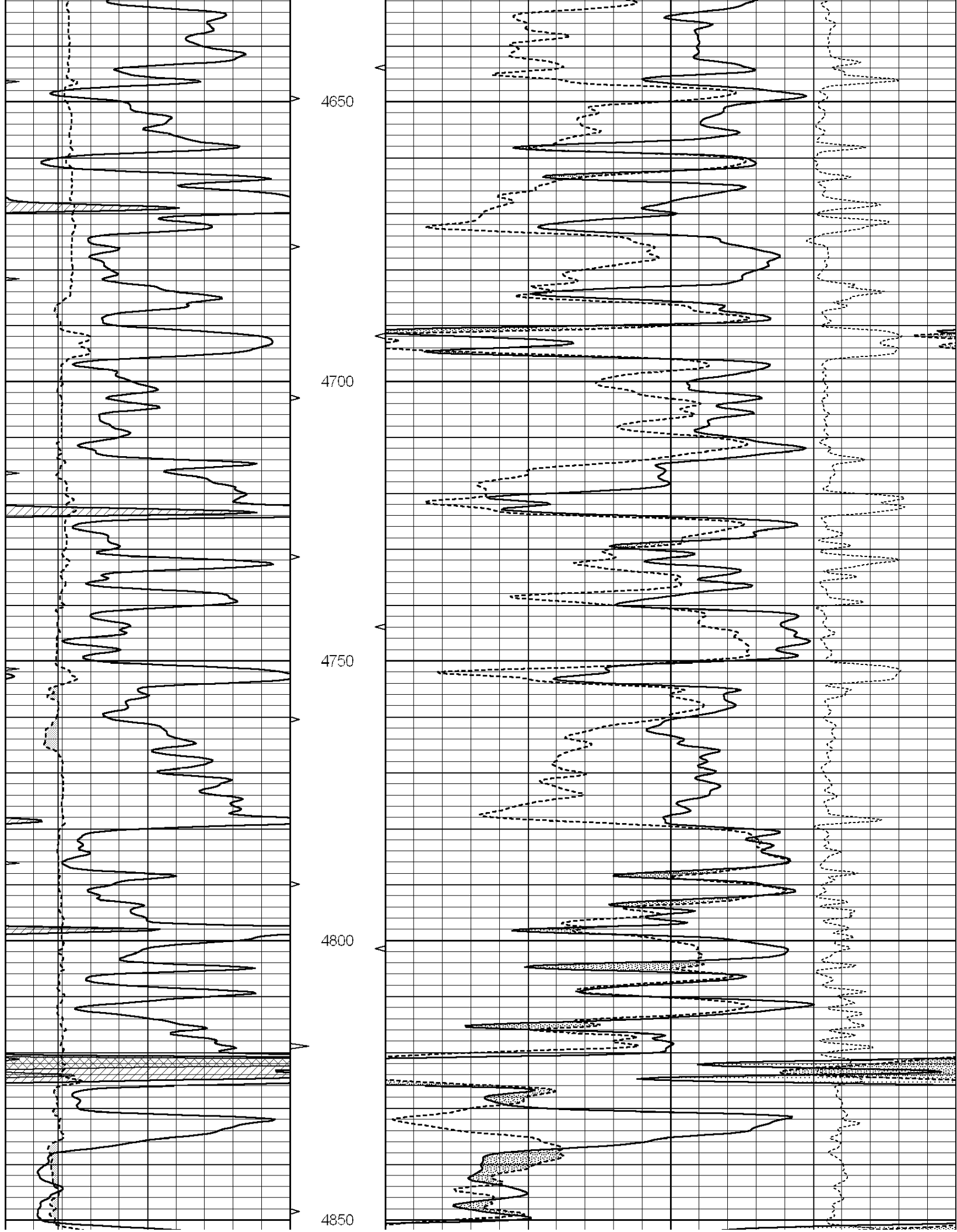


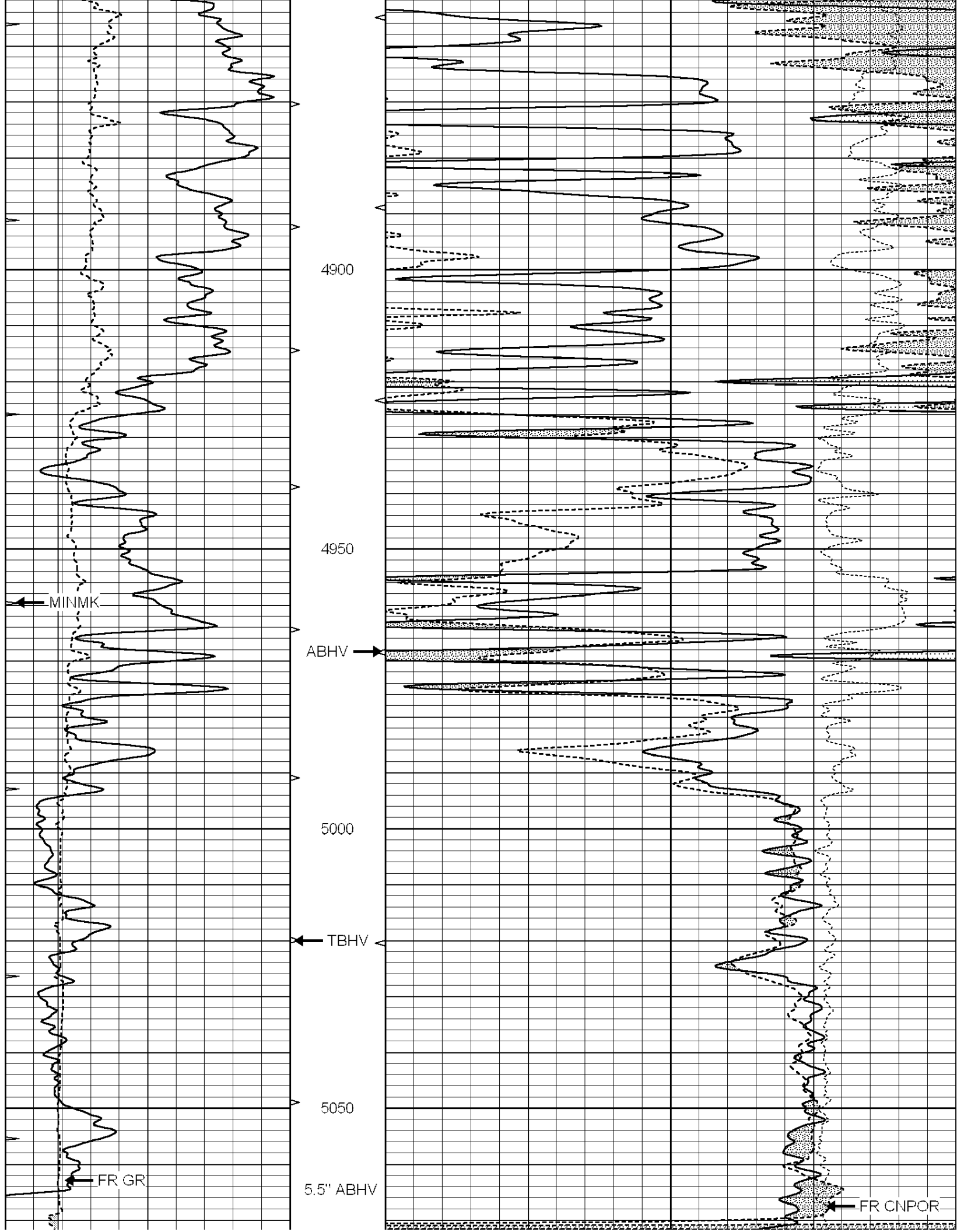


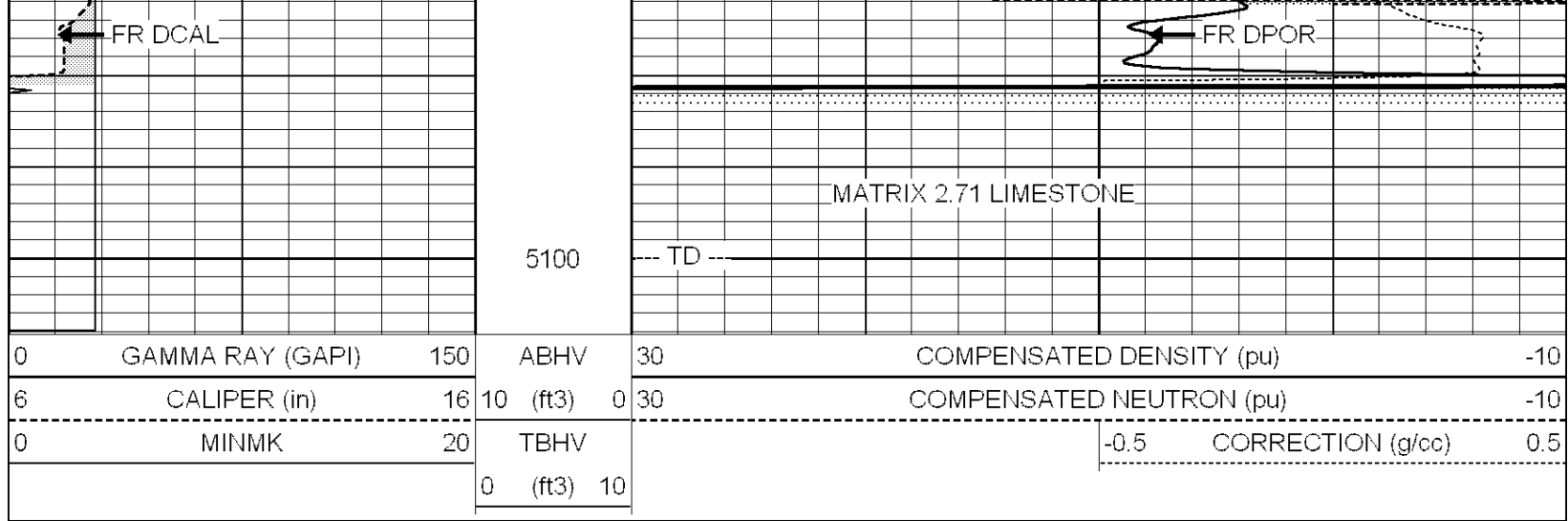








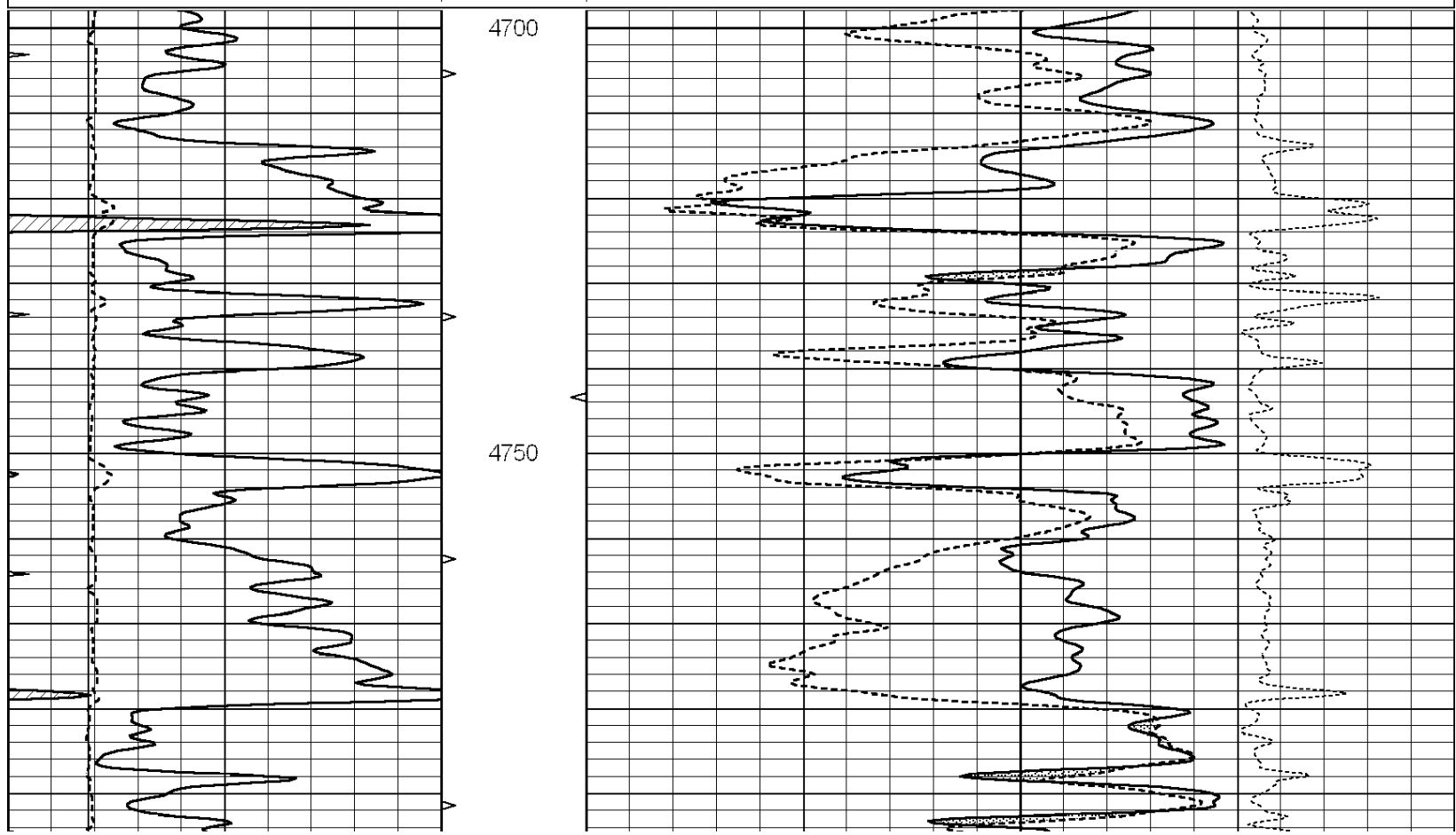


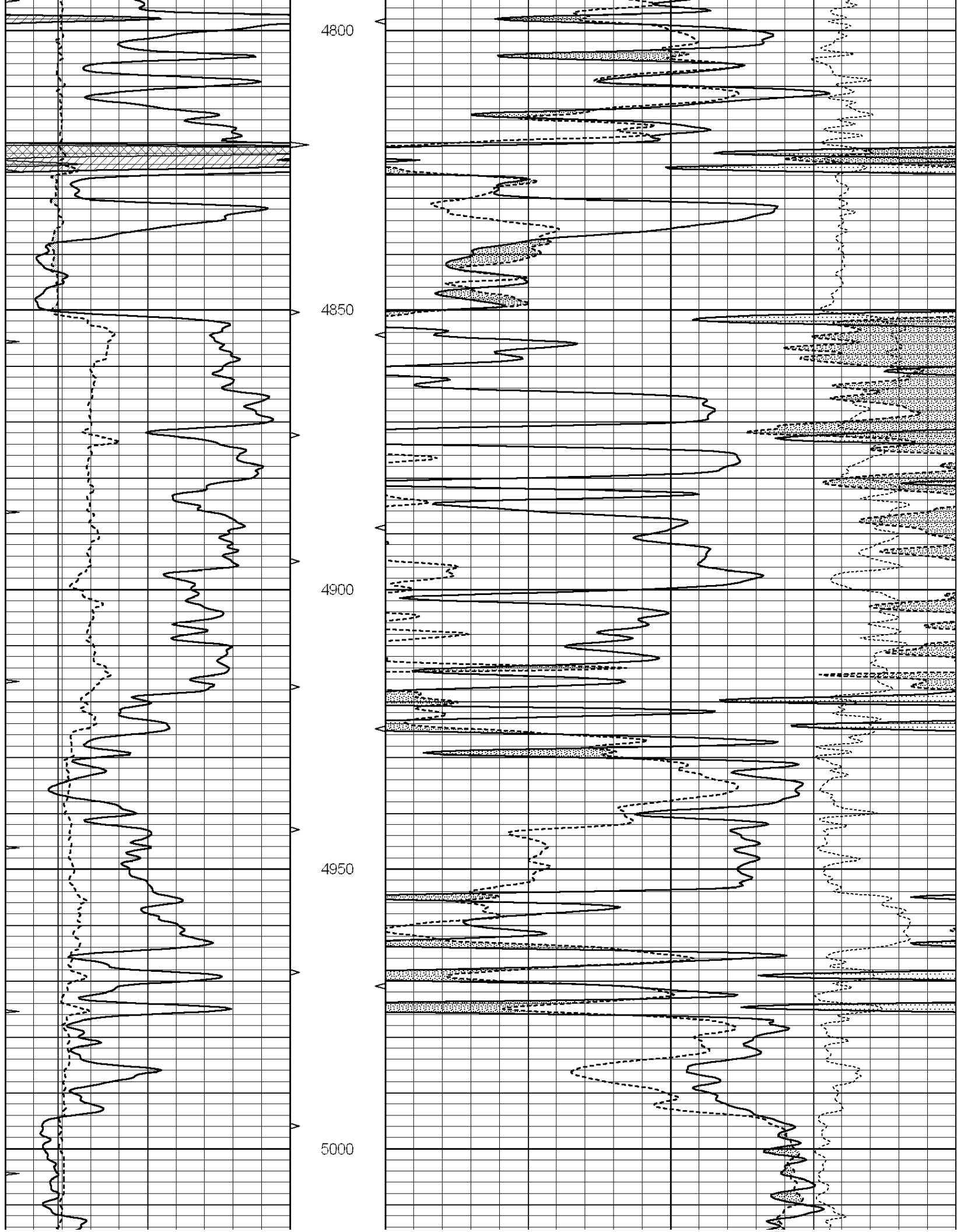


REPEAT SECTION

Database File: 24428ddn.db
 Dataset Pathname: pass4.2
 Presentation Format: _den_neu
 Dataset Creation: Thu May 08 20:15:54 2014
 Charted by: Depth in Feet scaled 1:240

| | | | | | | | |
|---|------------------|-----|----------|------|--------------------------|-------------------|-----|
| 0 | GAMMA RAY (GAPI) | 150 | ABHV | 30 | COMPENSATED DENSITY (pu) | -10 | |
| 6 | CALIPER (in) | 16 | 10 (ft3) | 0 30 | COMPENSATED NEUTRON (pu) | -10 | |
| 0 | MINMK | 20 | TBHV | | -0.5 | CORRECTION (g/cc) | 0.5 |
| | | | 0 (ft3) | 10 | | | |





| | | | | | |
|-----------|-------|------|--------|--------|-----|
| Magnesium | 1.710 | g/cc | 923.76 | 475.45 | cps |
| Aluminum | 2.580 | g/cc | 205.31 | 331.69 | cps |

Spine Angle = 76.54

Density/Spine Ratio = 0.563

| | Size | | Reading | |
|------------|-------|----|---------|---|
| Small Ring | 8.40 | in | 3.59 | V |
| Large Ring | 14.00 | in | 5.47 | V |

Compensated Neutron Calibration Report

Serial Number: 080620
 Tool Model: Probe

PRE-SURVEY VERIFICATION

| Detector | Readings | Measured | Target |
|-------------|----------|----------|--------|
| Short Space | cps | | |
| Long Space | cps | pu | pu |

POST-SURVEY VERIFICATION

| Detector | Readings | Measured | Target |
|-------------|----------|----------|--------|
| Short Space | cps | | |
| Long Space | cps | pu | pu |

Gamma Ray Calibration Report

Serial Number: 7
 Tool Model: Probe1
 Performed: Thu May 08 17:53:01 2014

Calibrator Value: 1.0 GAPI

Background Reading: 0.0 cps
 Calibrator Reading: 1.0 cps

Sensitivity: 0.3000 GAPI/cps