



**COMPLETION
& PRODUCTION
SERVICES CO.**

**DUAL
INDUCTION
LOG**

Company RED OAK ENERGY
Well COAKES/COLLINGWOOD UNIT # 1-22
Field WILDCAT
County WICHITA State KANSAS

Company RED OAK ENERGY
Well COAKES/COLLINGWOOD UNIT # 1-22
Field WILDCAT
County WICHITA
State KANSAS

Location: API #: 15-203-20262
2304' FNL & 1026' FWL
SEC 2 TWP 20S RGE 38W
Permanent Datum GROUND LEVEL Elevation 3408
Log Measured From KELLY BUSHING 11' A.G.L.
Drilling Measured From KELLY BUSHING
Other Services
CDL/CNL
MICRO
Elevation
K.B. 3419
D.F.
G.L. 3408

Date	5-8-14
Run Number	ONE
Depth Driller	5100
Depth Logger	5100
Bottom Logged Interval	5098
Top Log Interval	00
Casing Driller	351
Casing Logger	351
Bit Size	7.875
Type Fluid in Hole	CHEMICAL MUD
Density / Viscosity	9.4 / 58
pH / Fluid Loss	9.0 / 9.6
Source of Sample	FLOWLINE
Rim @ Meas. Temp	0.50 @ 74F
Rmf @ Meas. Temp	0.38 @ 74F
Rmc @ Meas. Temp	0.60 @ 74F
Source of Rmf / Rmc	MEASURED
Rim @ BHT	.290 @ 126F
Time Circulation Stopped	3 HOURS
Time Logger on Bottom	4:45 P.M.
Maximum Recorded Temperature	126F
Equipment Number	860
Location	HAYS, KS.
Recorded By	RUPP
Witnessed By	SCOTT BANKS

<<< Fold Here >>>

All interpretations are opinions based on inferences from electrical or other measurements and we cannot and do not guarantee the accuracy or correctness of any interpretation, and we shall not, except in the case of gross or willful negligence on our part, be liable or responsible for any loss, costs, damages, or expenses incurred or sustained by anyone resulting from any interpretation made by any of our officers, agents or employees. These interpretations are also subject to our general terms and conditions set out in our current Price Schedule.

Comments

NABORS COMPLETION & PRODUCTION SERVICES
785-628-6395
THANK YOU FOR YOUR BUSINESS
DIRECTIONS: SELKIRK EAST EDGE, 11.5S, 1E, 1/2S, E INTO.

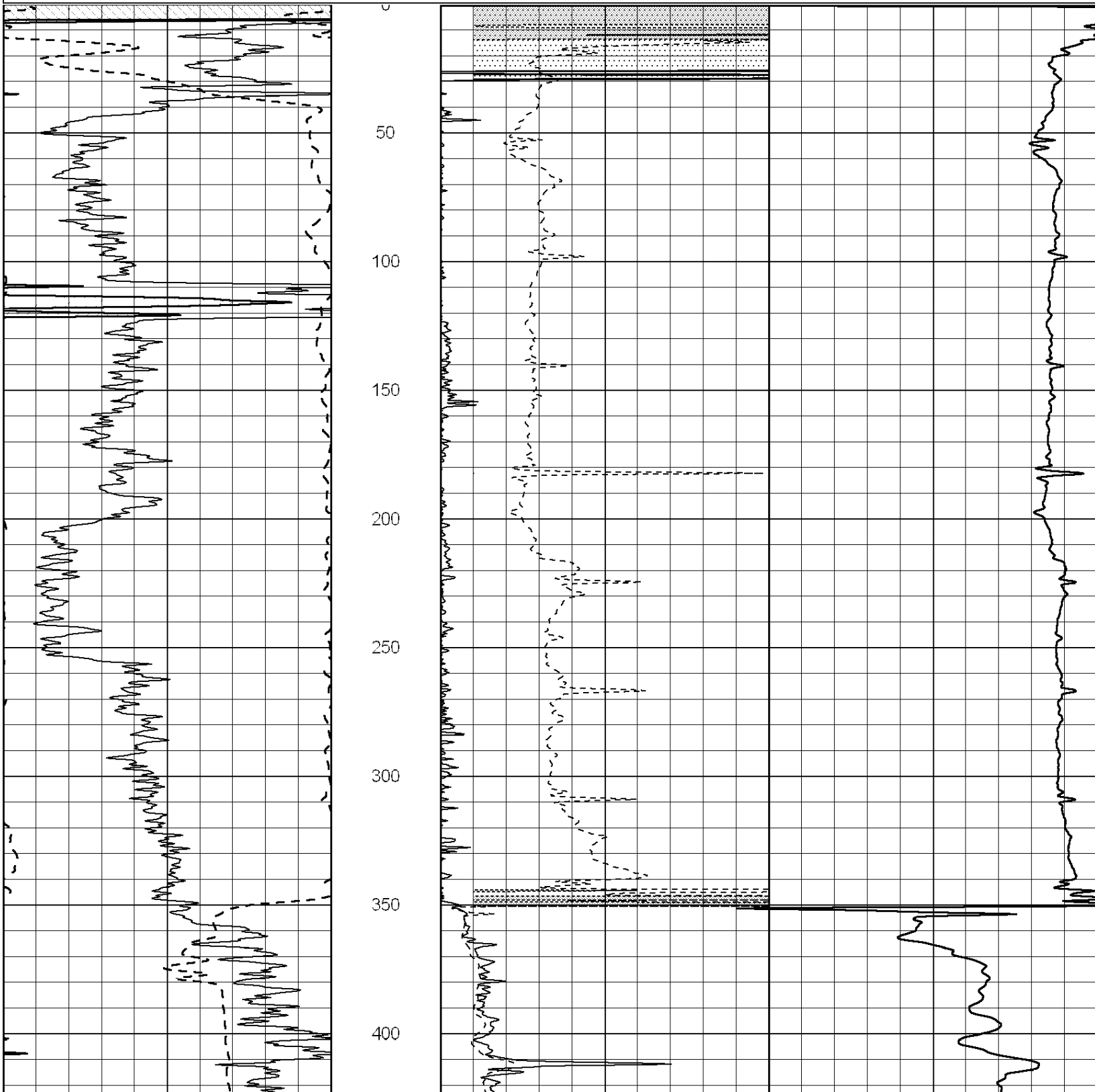


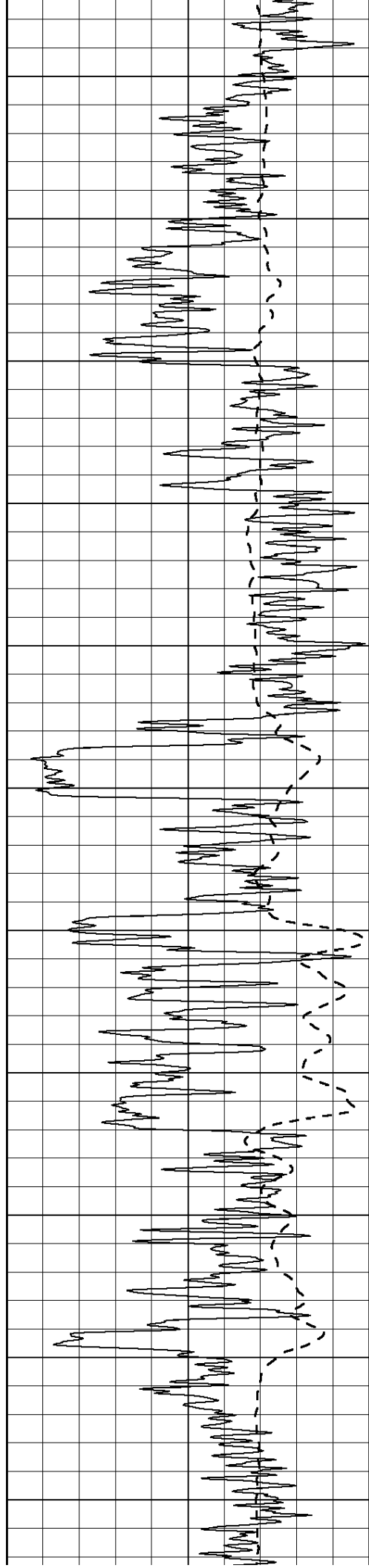
**COMPLETION
& PRODUCTION**

MAIN SECTION

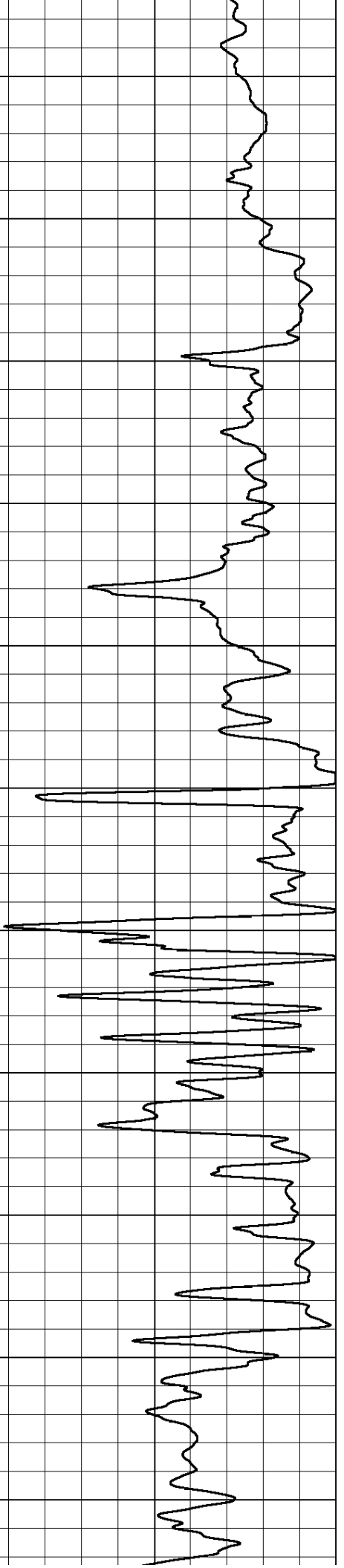
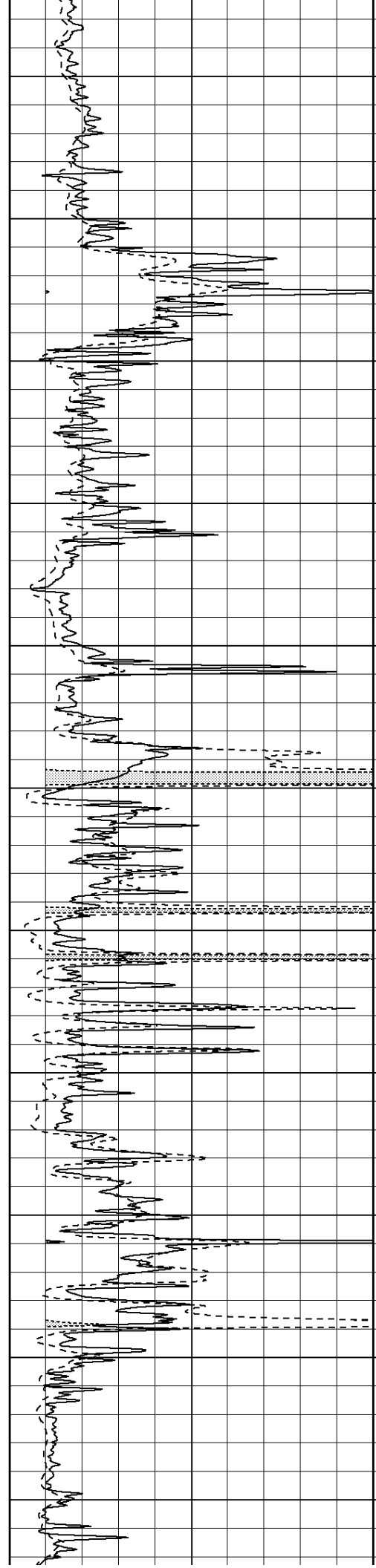
Database File: 24428ddn.db
 Dataset Pathname: pass5.1A
 Presentation Format: _dil2
 Dataset Creation: Thu May 08 20:07:43 2014
 Charted by: Depth in Feet scaled 1:600

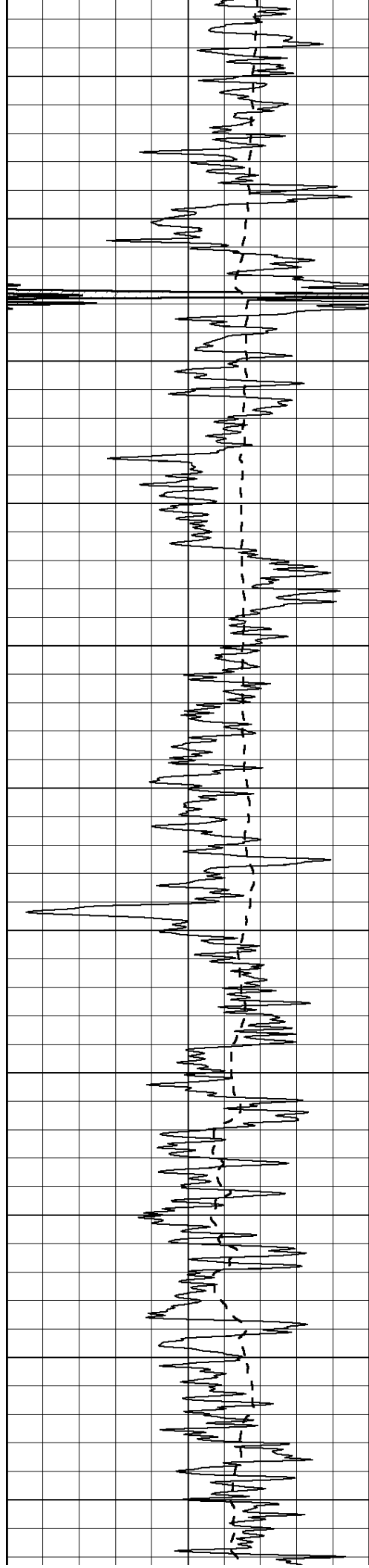
0	Gamma Ray (GAPI)	150	0	RLL3 (Ohm-m)	50
			0	Deep Induction (Ohm-m)	50
			1000	CILD (mmho/m)	0
			50	RILD X10 (Ohm-m)	500
			50	RLL3 X10 (Ohm-m)	500



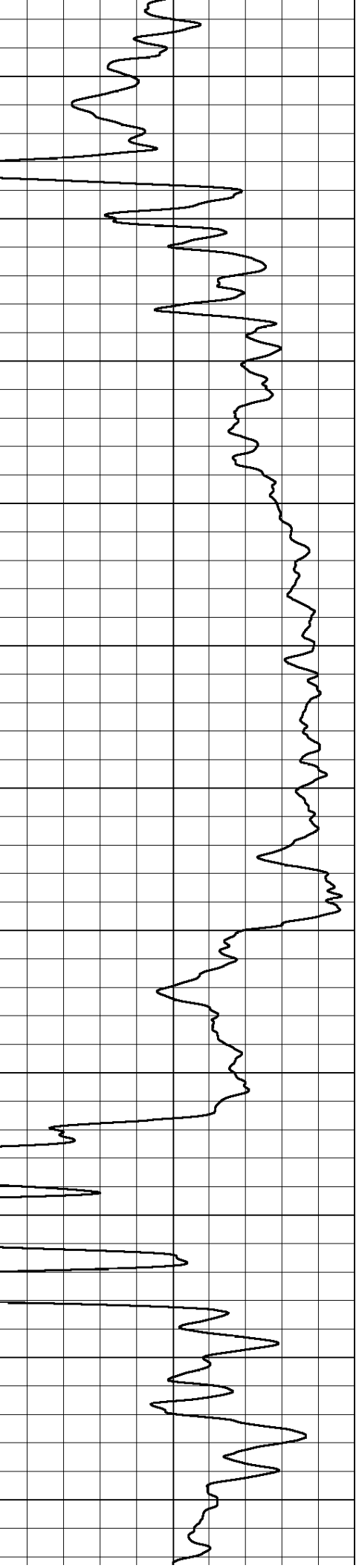
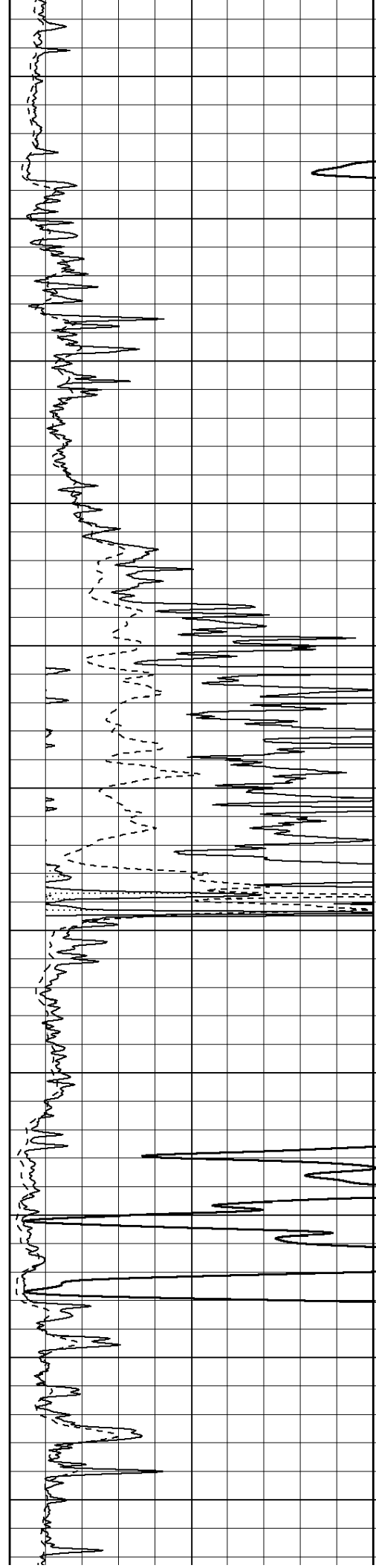


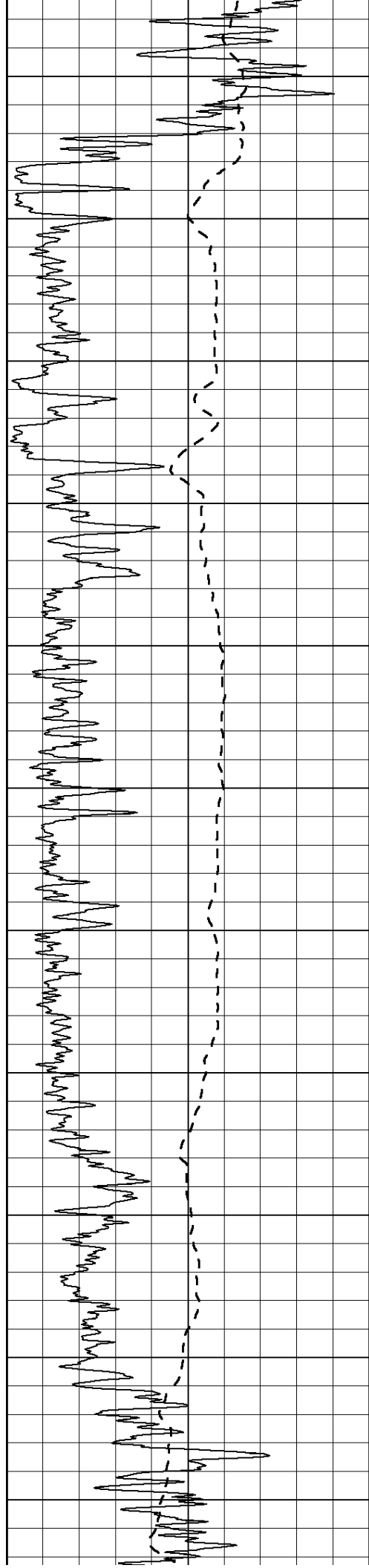
450
500
550
600
650
700
750
800
850
900
950



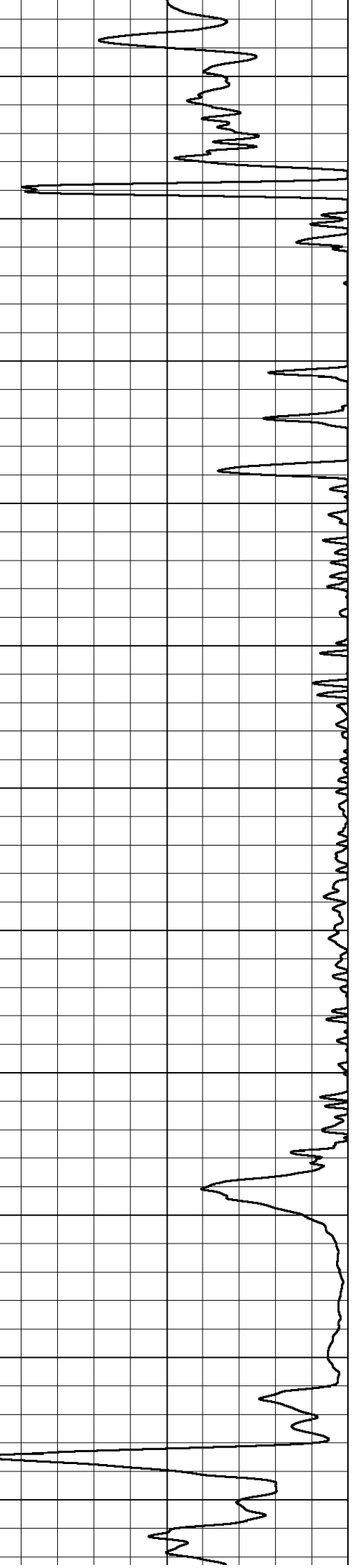
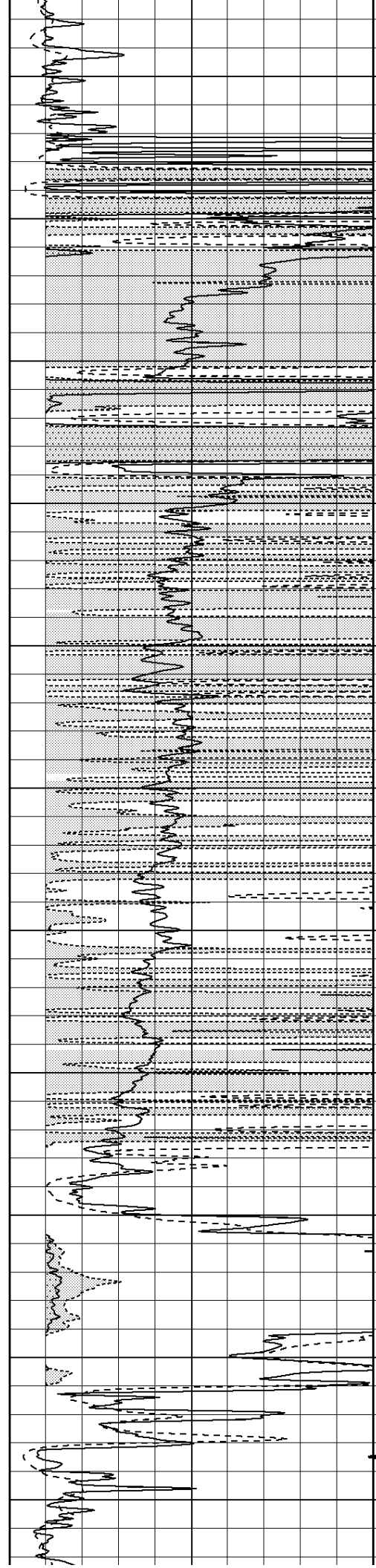


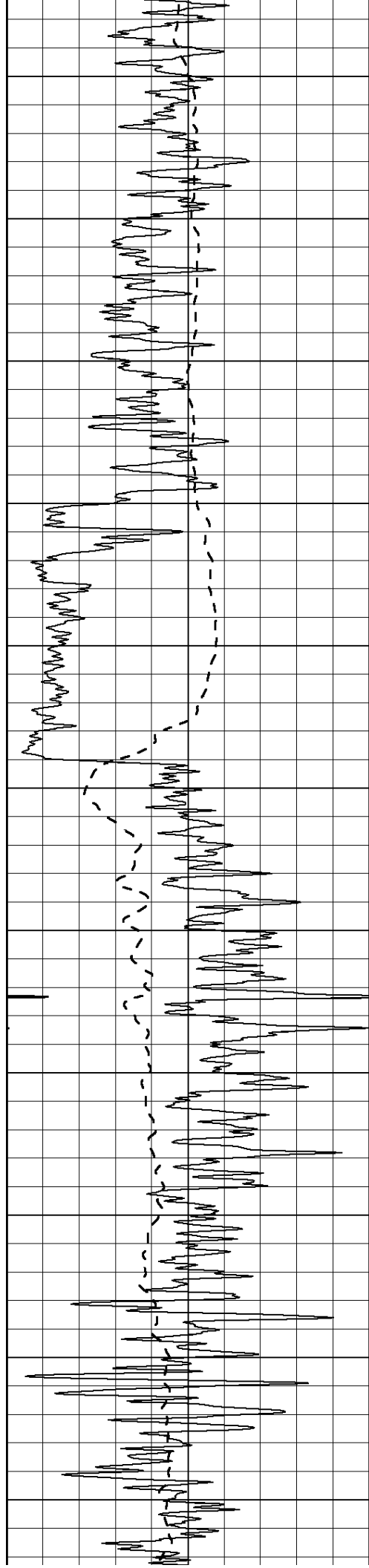
1000
1050
1100
1150
1200
1250
1300
1350
1400
1450
1500



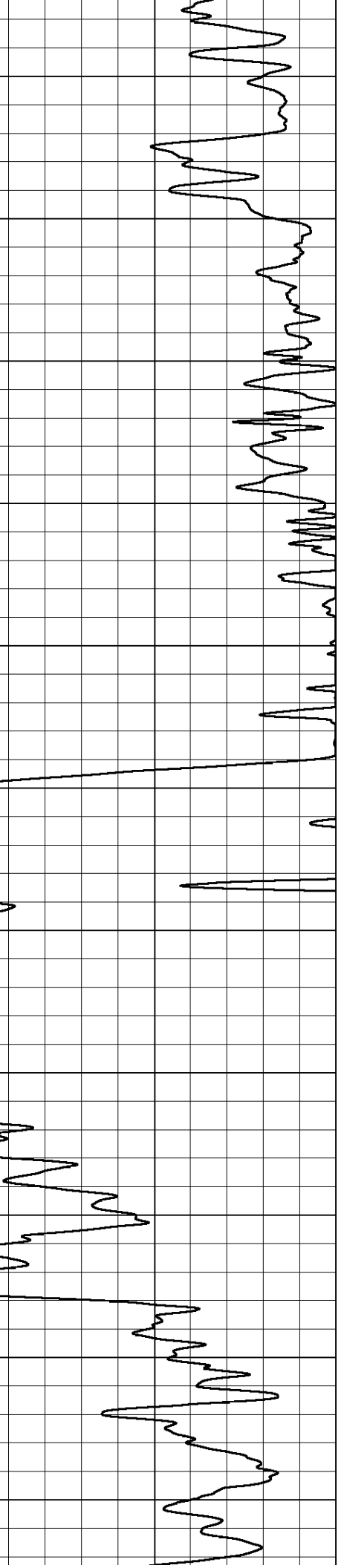
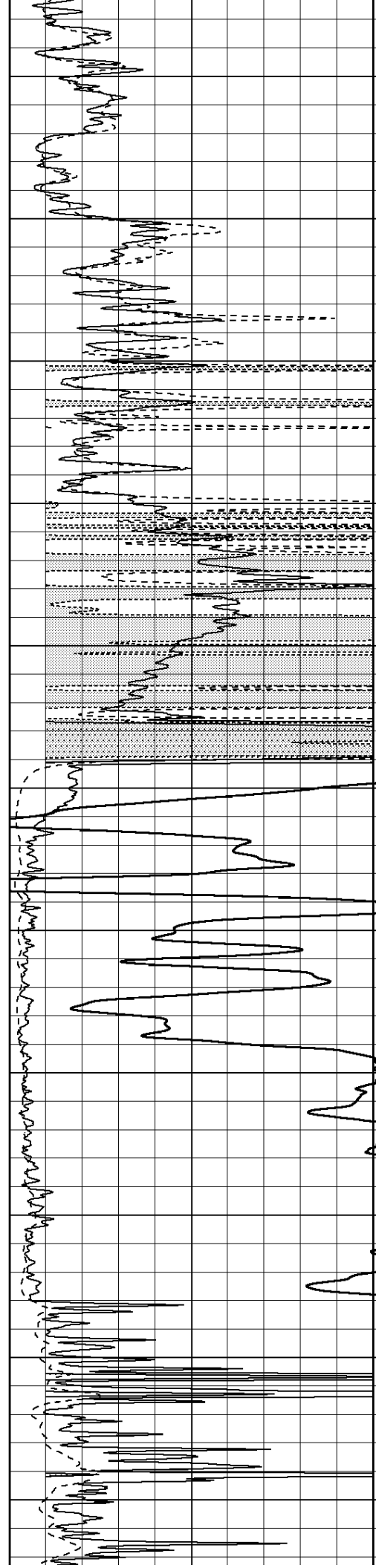


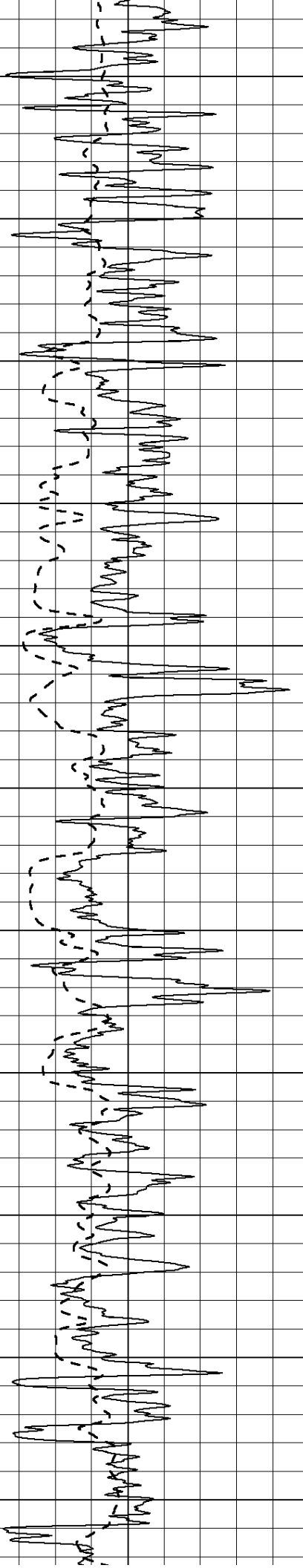
1550
1600
1650
1700
1750
1800
1850
1900
1950
2000
2050





2100
2150
2200
2250
2300
2350
2400
2450
2500
2550
2600





2650

2700

2750

2800

2850

2900

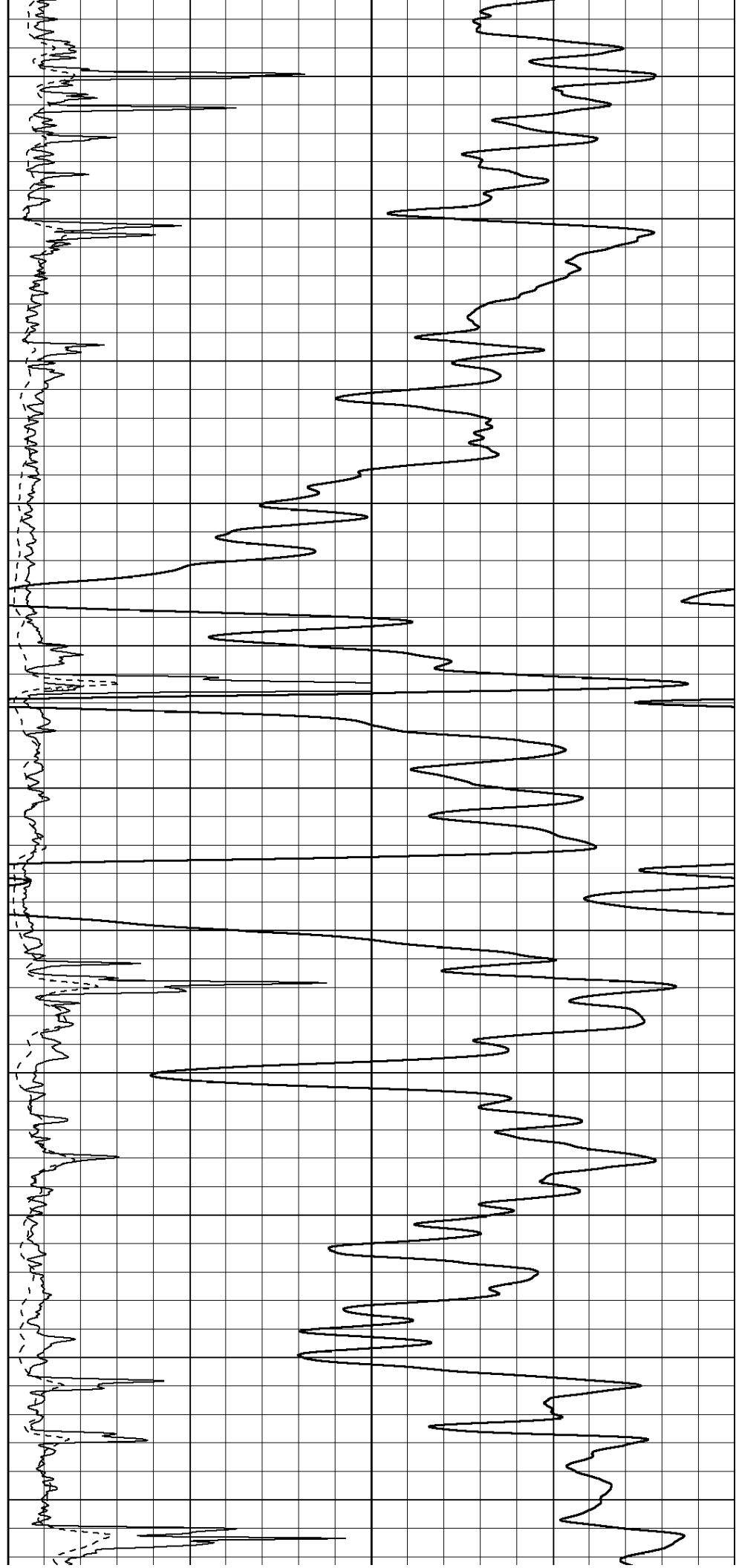
2950

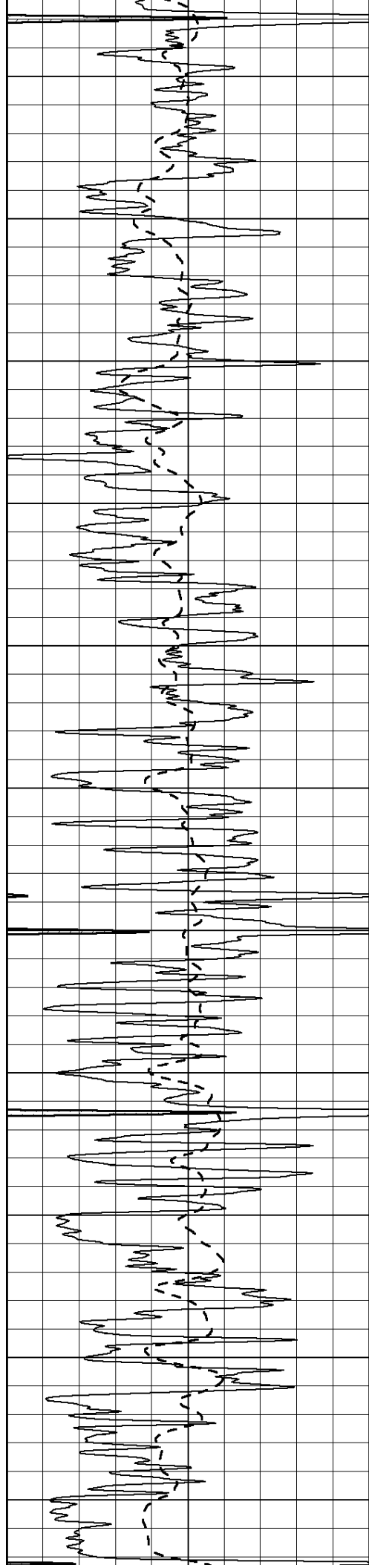
3000

3050

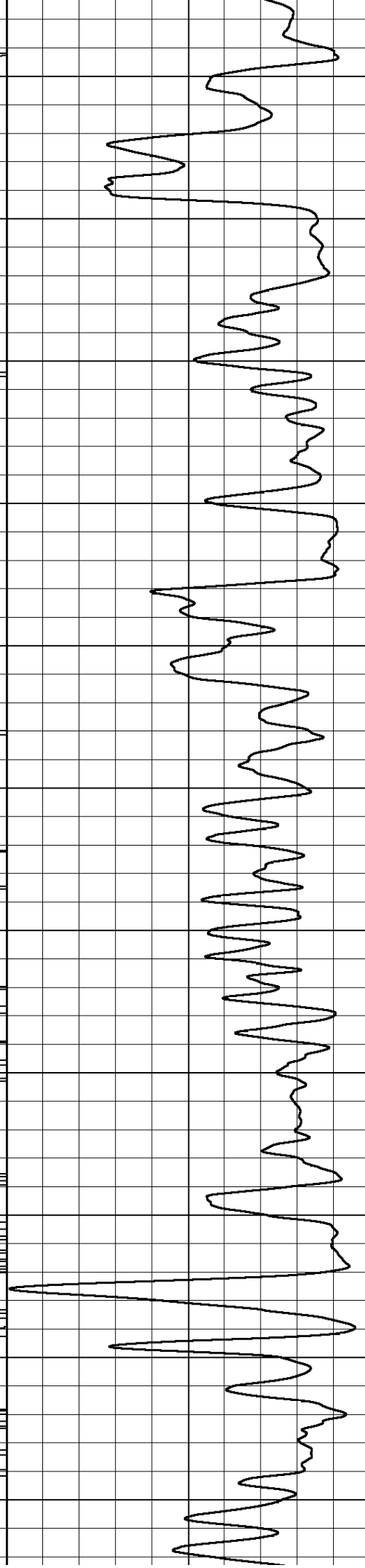
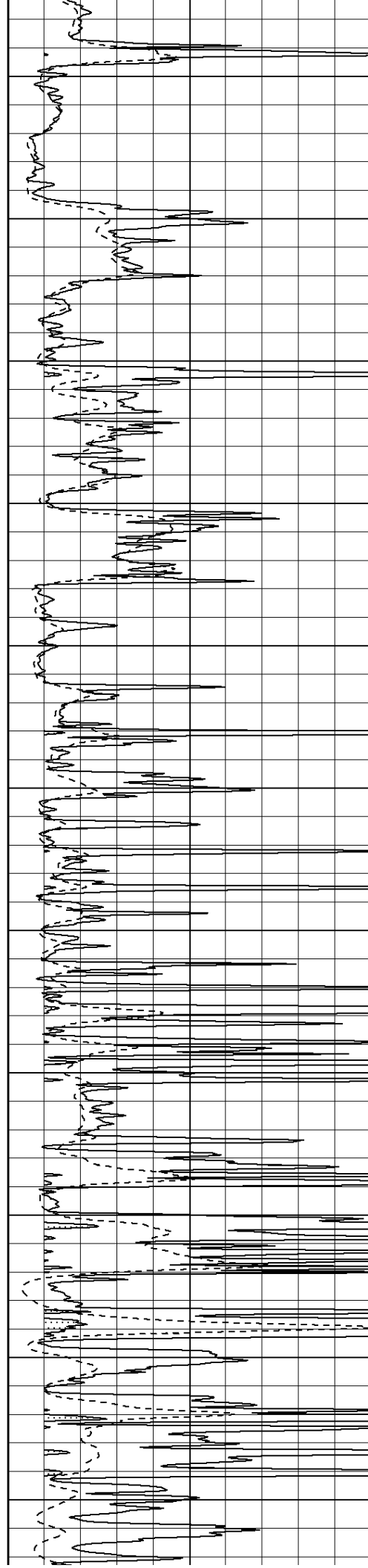
3100

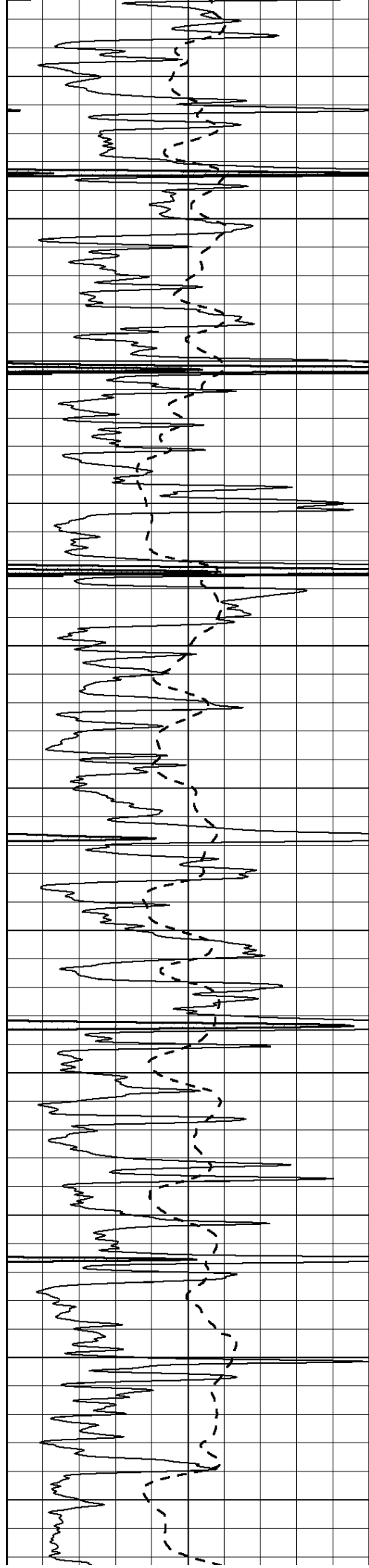
3150





3200
3250
3300
3350
3400
3450
3500
3550
3600
3650
3700





3750

3800

3850

3900

3950

4000

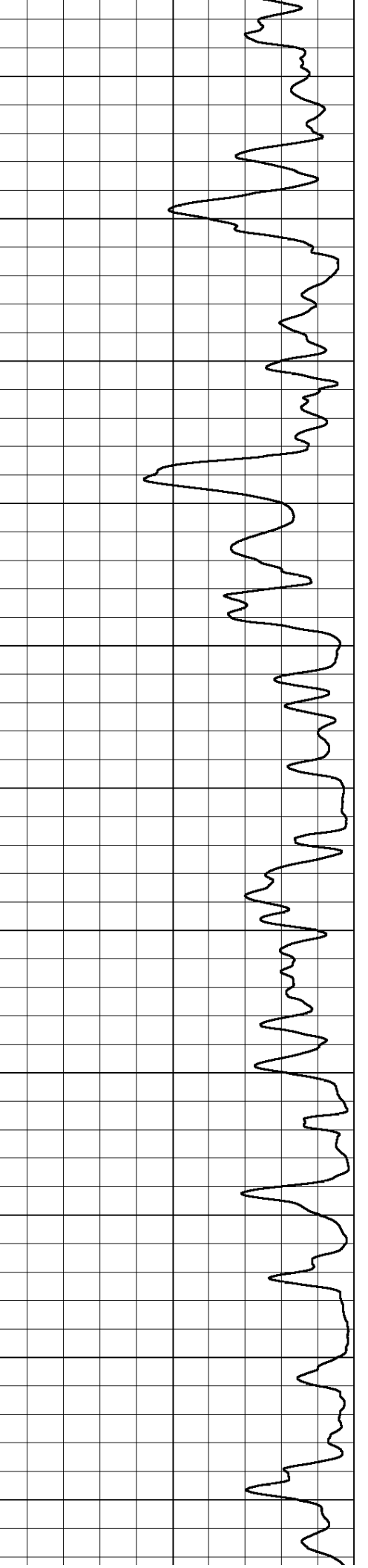
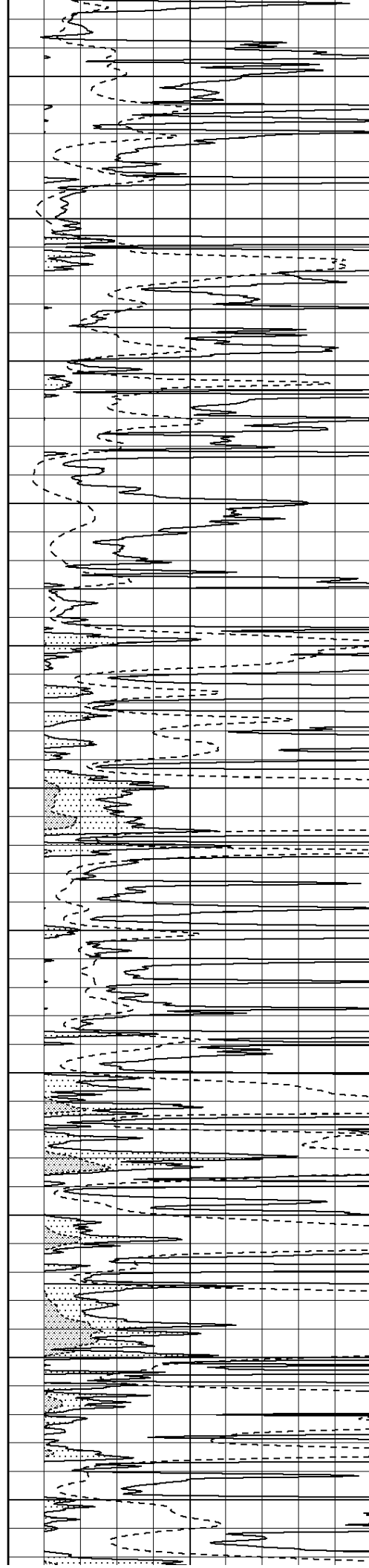
4050

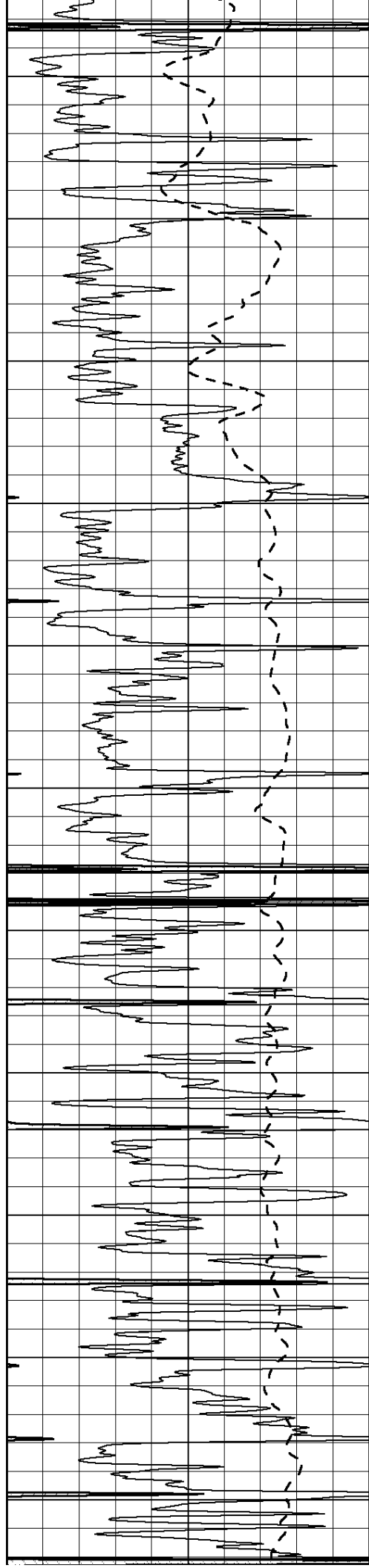
4100

4150

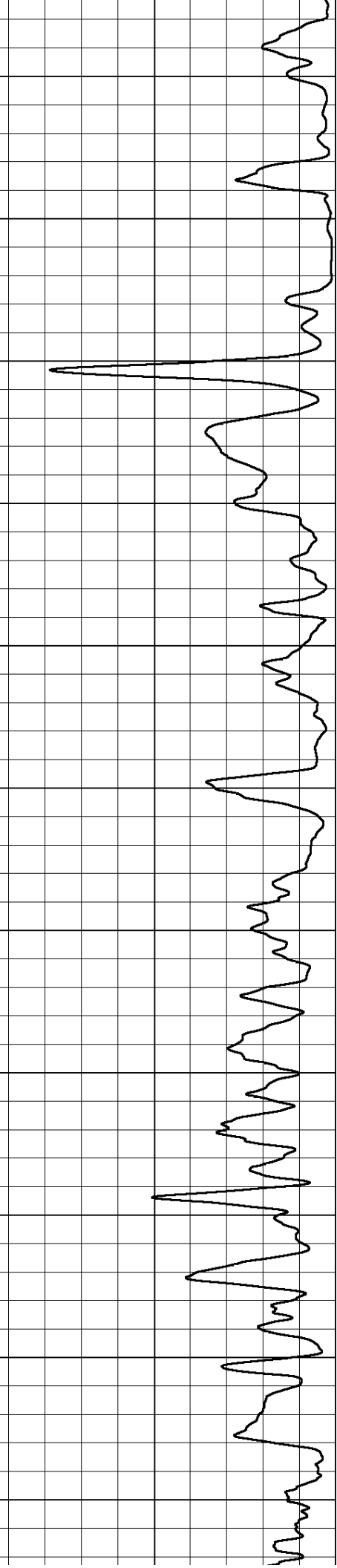
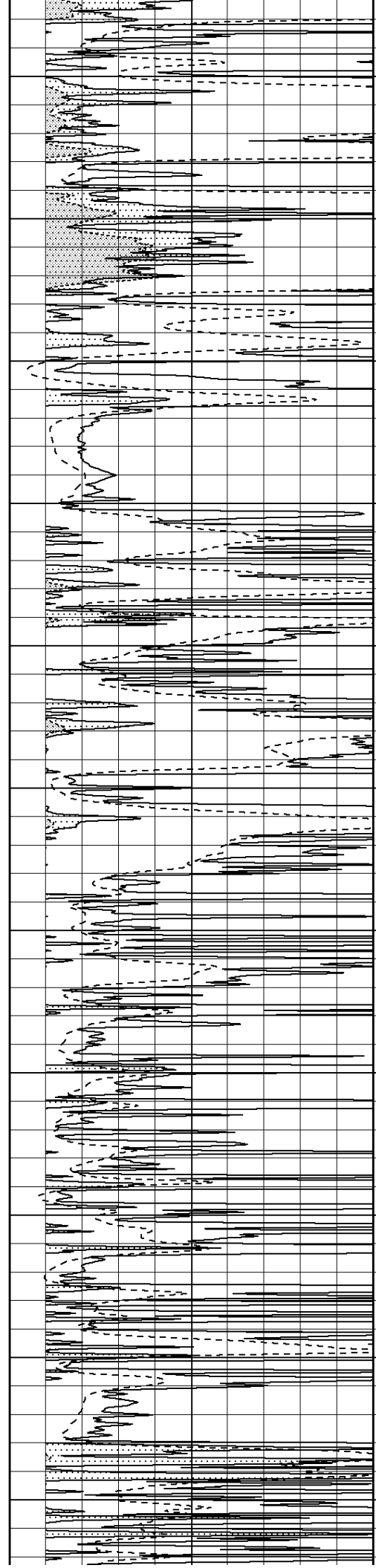
4200

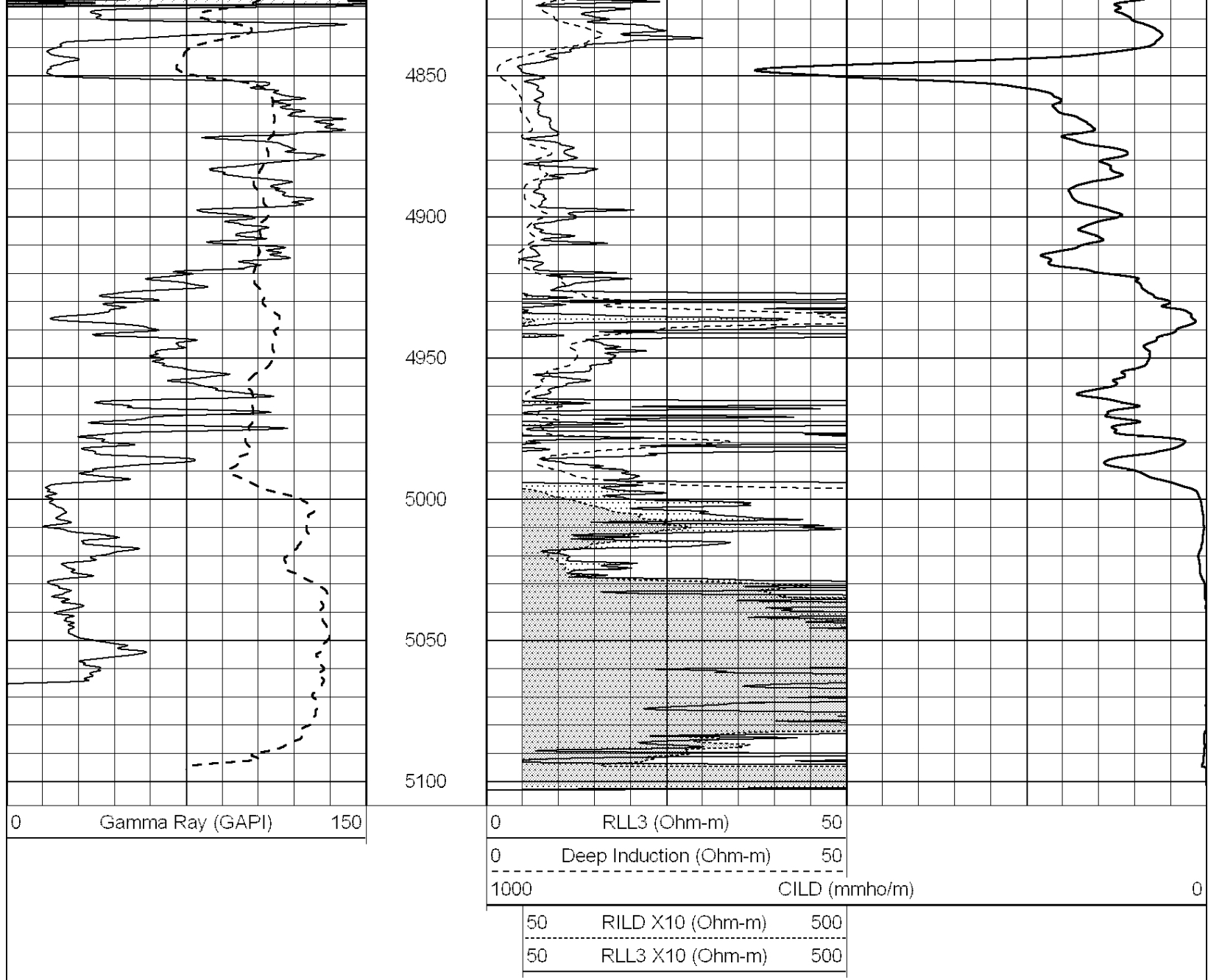
4250





4300
4350
4400
4450
4500
4550
4600
4650
4700
4750
4800

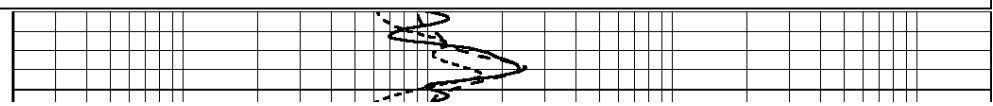


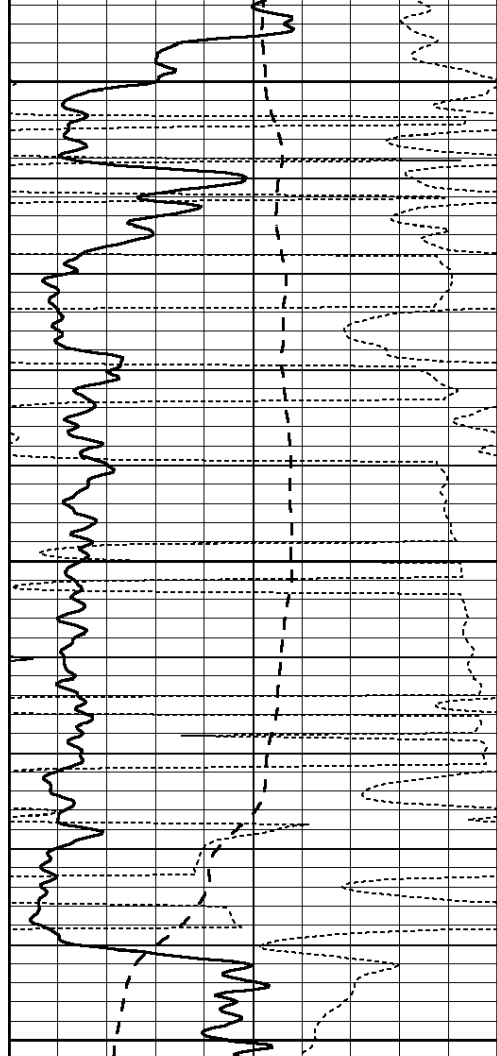


MAIN SECTION

Database File: 24428ddn.db
 Dataset Pathname: pass5.1A
 Presentation Format: _dil
 Dataset Creation: Thu May 08 20:07:43 2014
 Charted by: Depth in Feet scaled 1:240

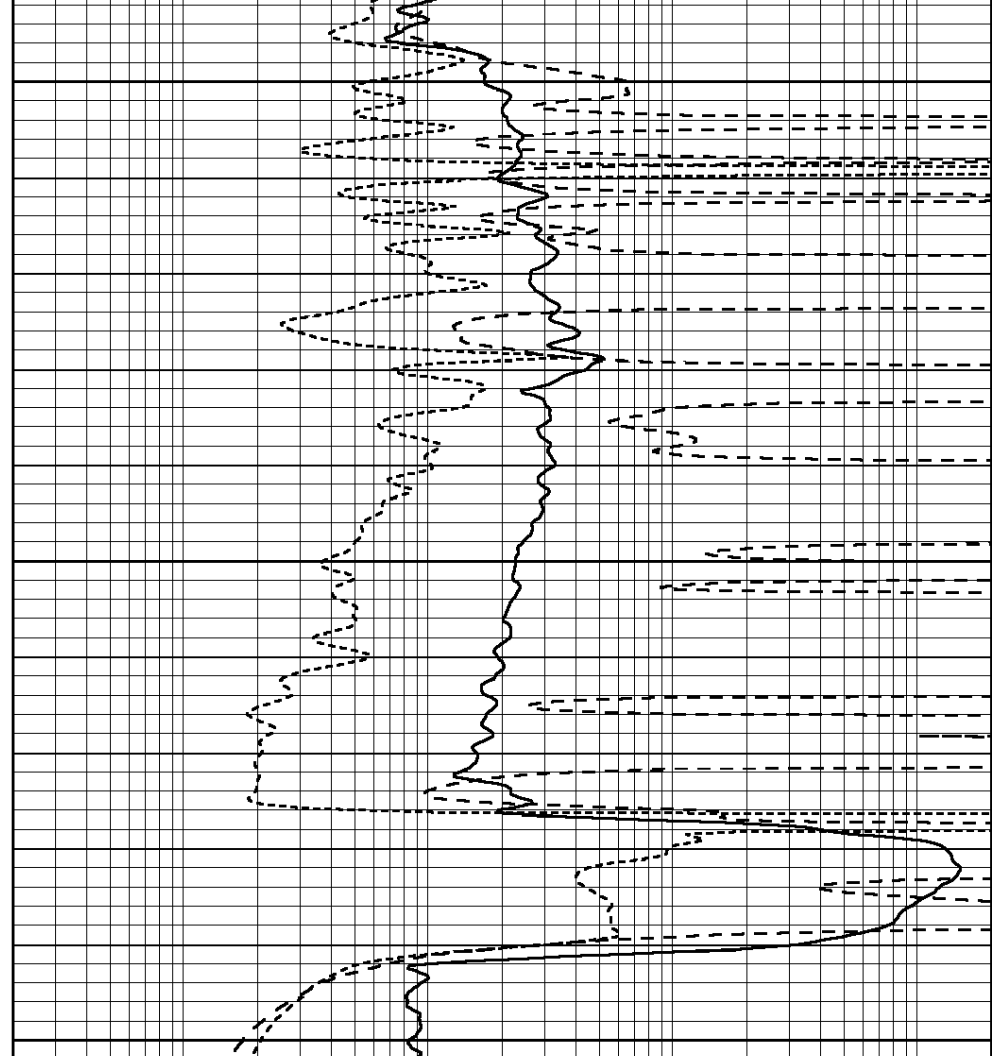
0	GAMMA RAY (GAPI)	150	0.2	RLL3 (Ohm-m)	2000
-100	SP (mV)	100	0.2	DEEP INDUCTION (Ohm-m)	2000
-250	RxoRt	50	0.2	MEDIUM INDUCTION (Ohm-m)	2000
0	MINMK	20			





2250
2300
2350

0	GAMMA RAY (GAPI)	150
-100	SP (mV)	100
-250	RxoRt	50
0	MINMK	20



0.2	RLL3 (Ohm-m)	2000
0.2	DEEP INDUCTION (Ohm-m)	2000
0.2	MEDIUM INDUCTION (Ohm-m)	2000



MAIN SECTION

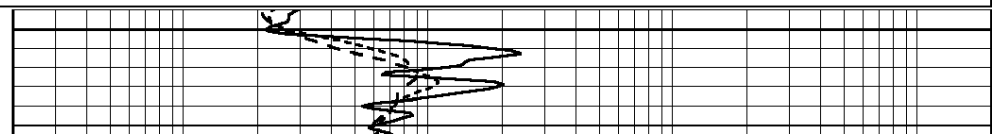
Database File: 24428ddn.db
 Dataset Pathname: pass5.1A
 Presentation Format: _dil
 Dataset Creation: Thu May 08 20:07:43 2014
 Charted by: Depth in Feet scaled 1:240

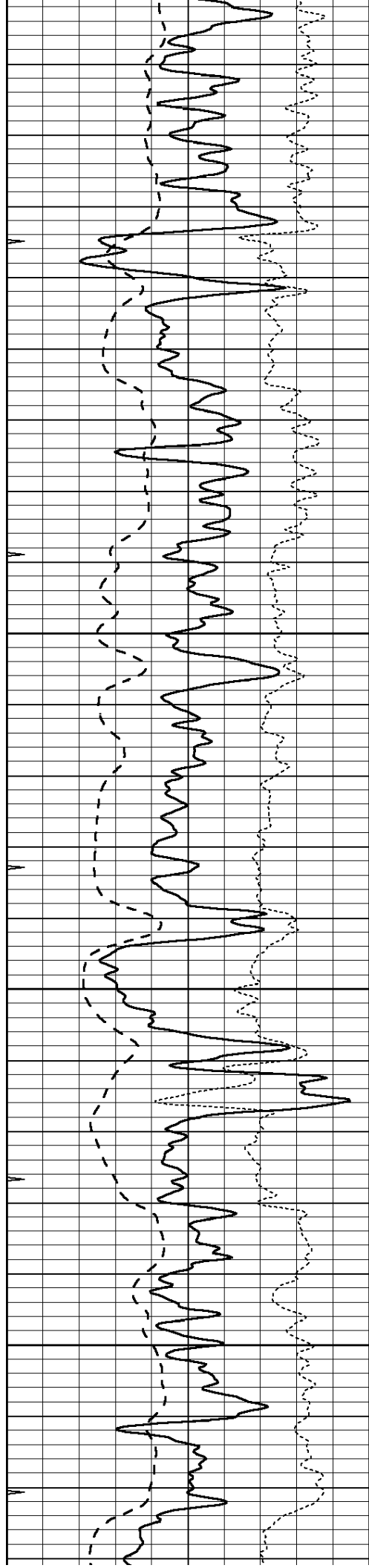
0	GAMMA RAY (GAPI)	150
-100	SP (mV)	100
-250	RxoRt	50
0	MINMK	20

0.2	RLL3 (Ohm-m)	2000
0.2	DEEP INDUCTION (Ohm-m)	2000
0.2	MEDIUM INDUCTION (Ohm-m)	2000



2700



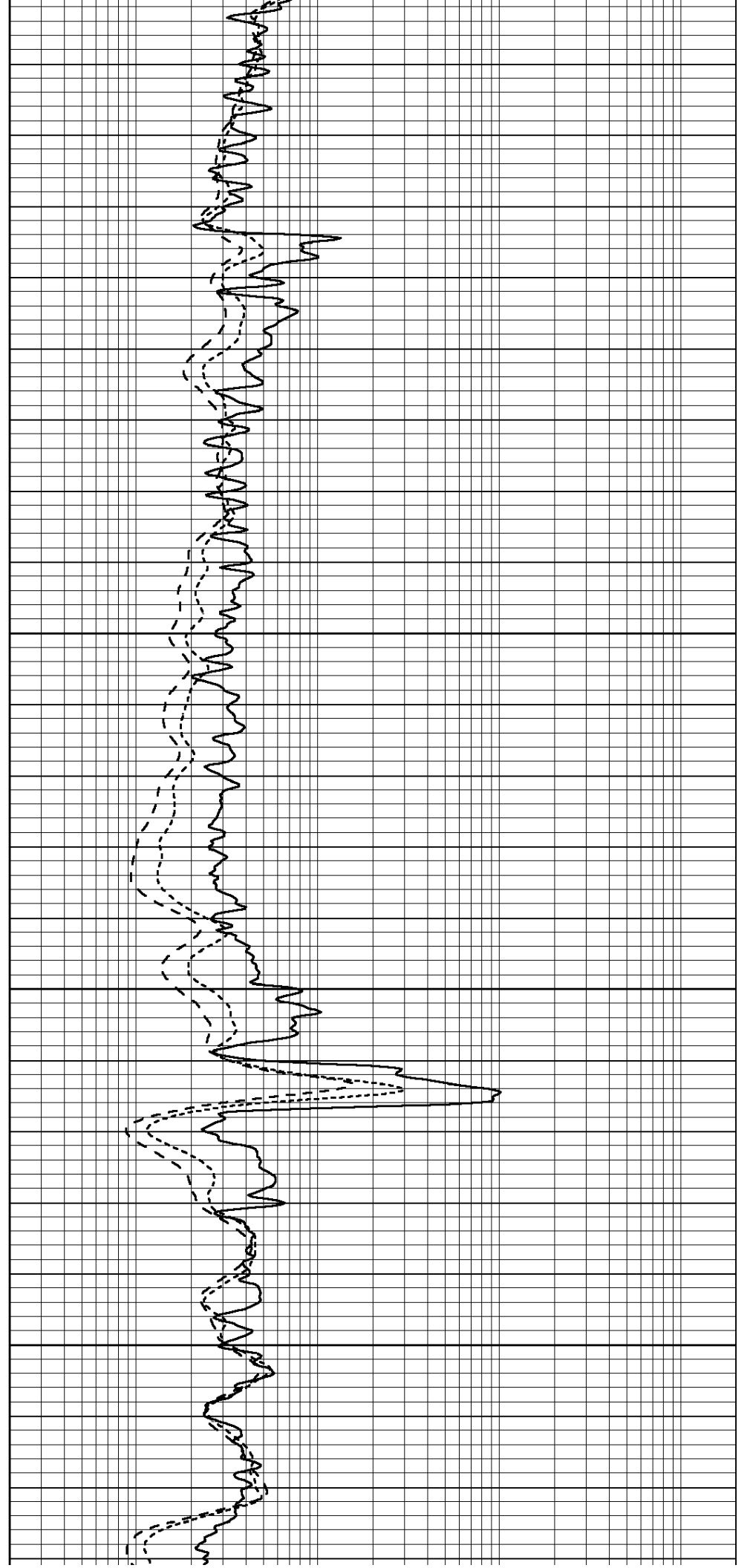


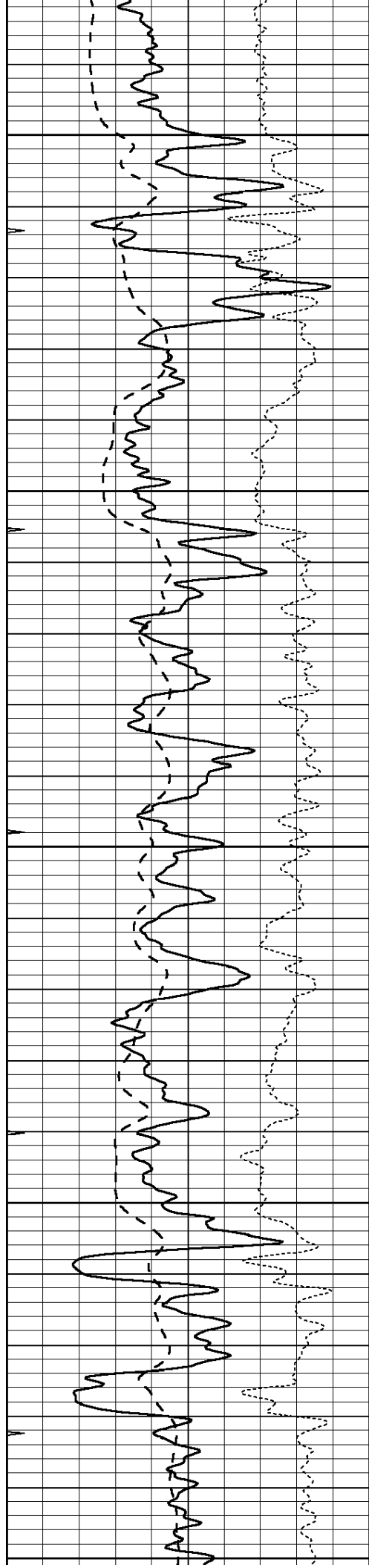
2750

2800

2850

2900





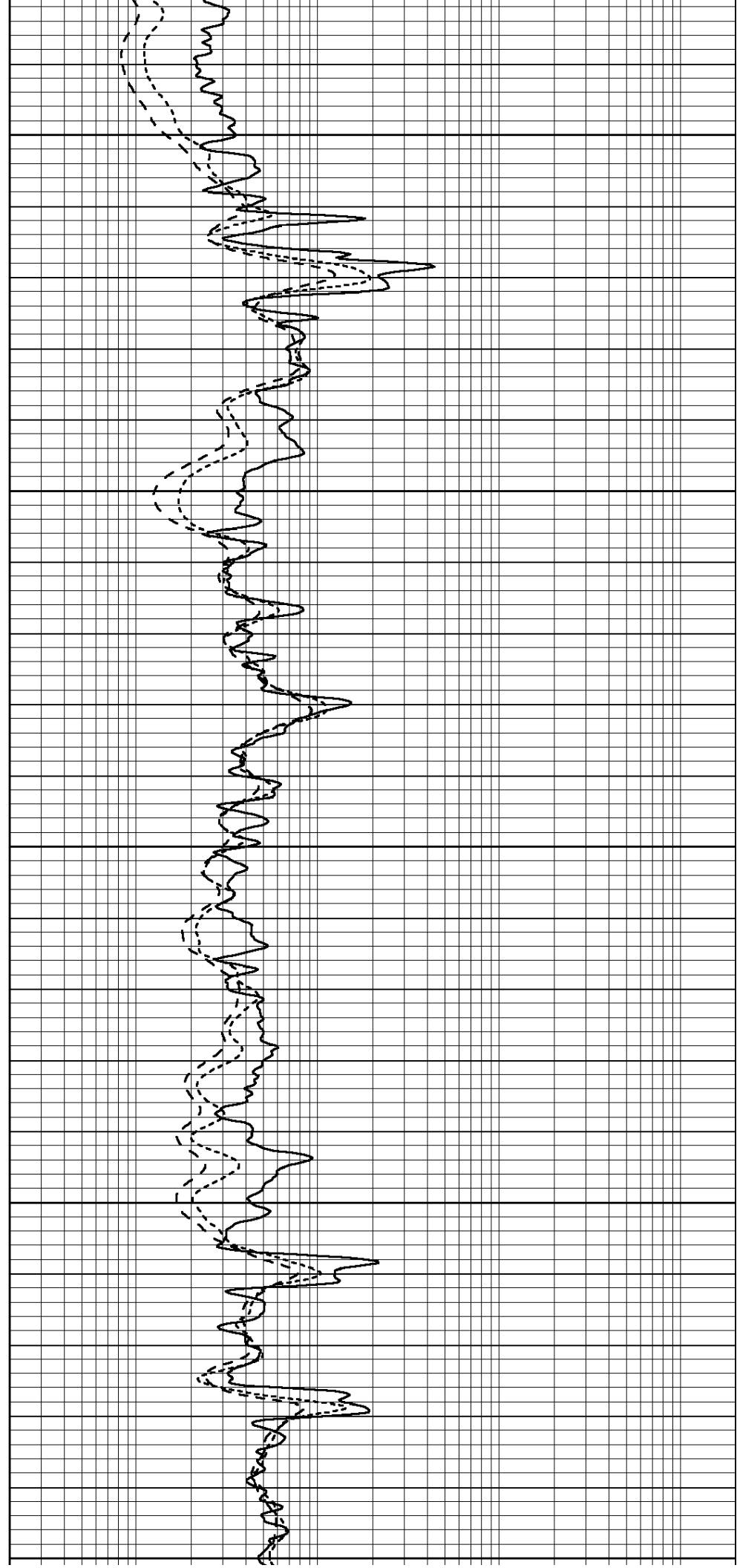
2950

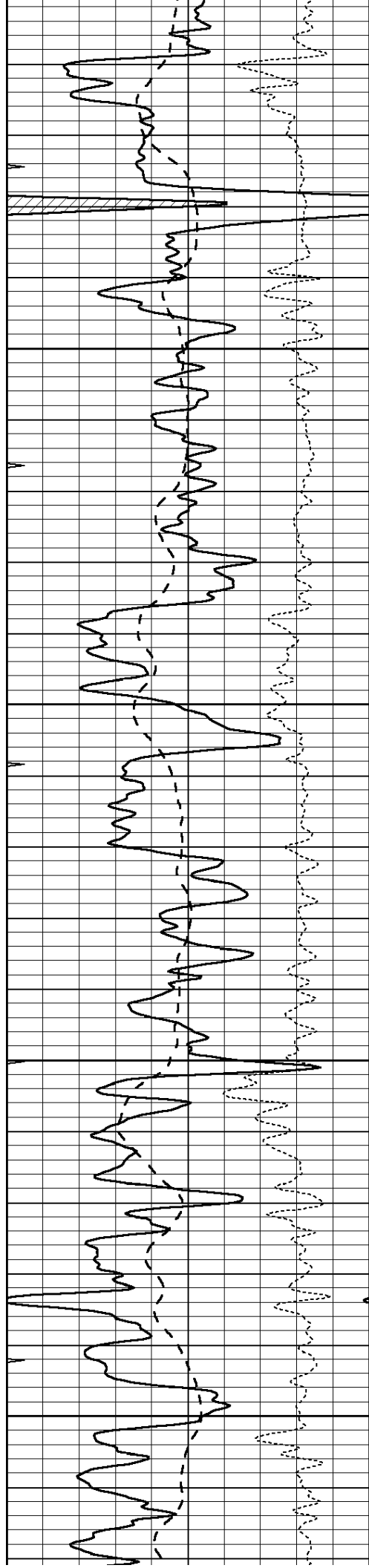
3000

3050

3100

3150



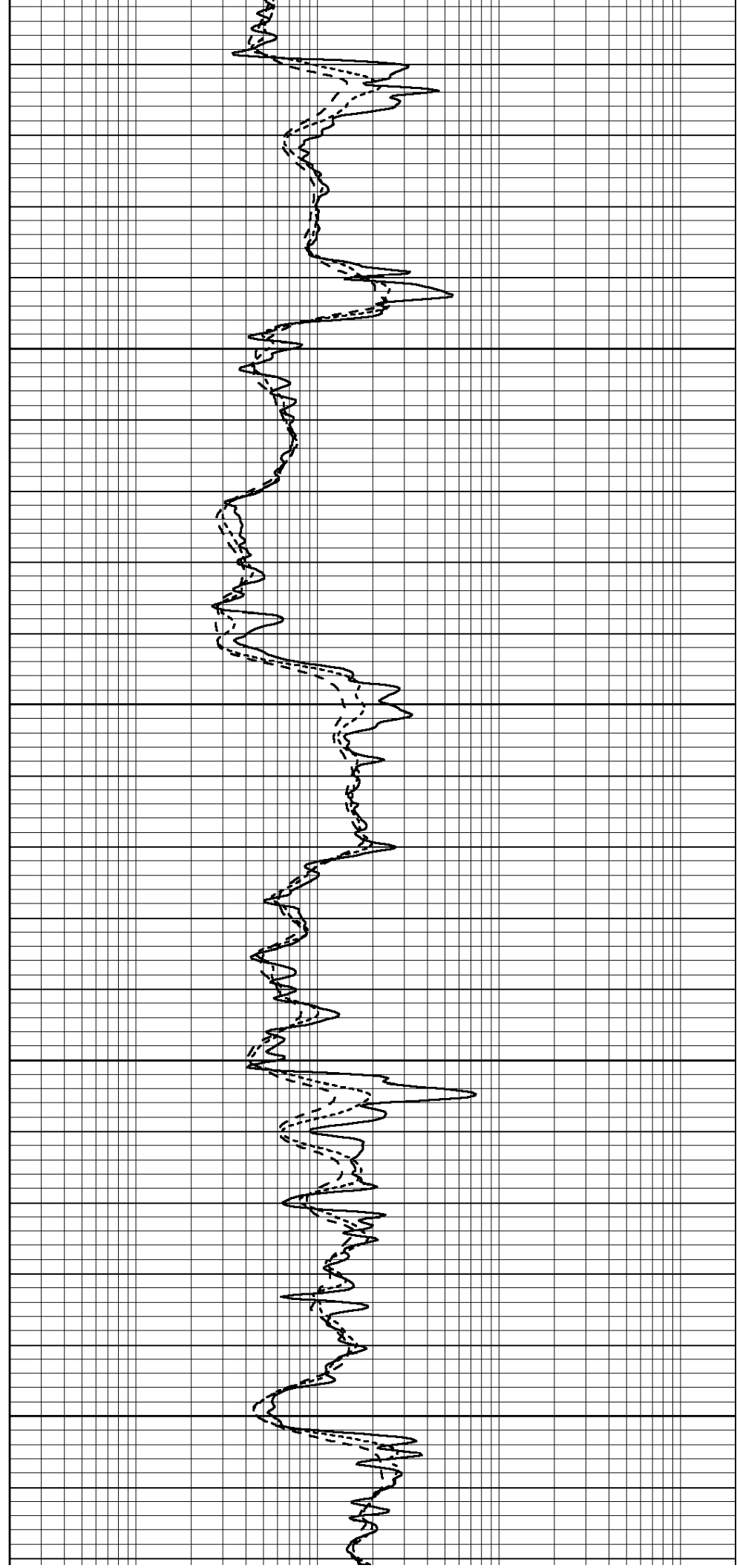


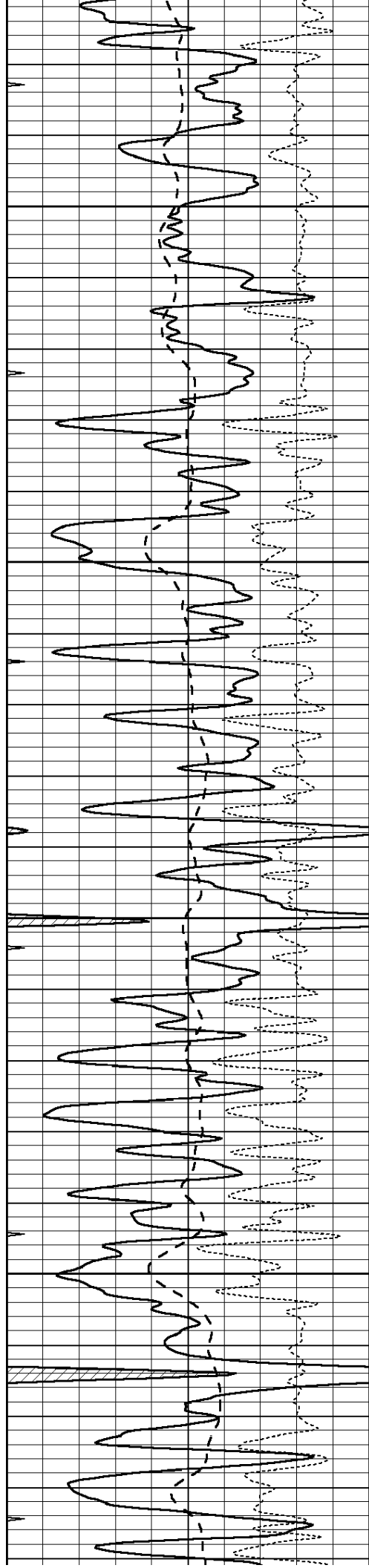
3200

3250

3300

3350



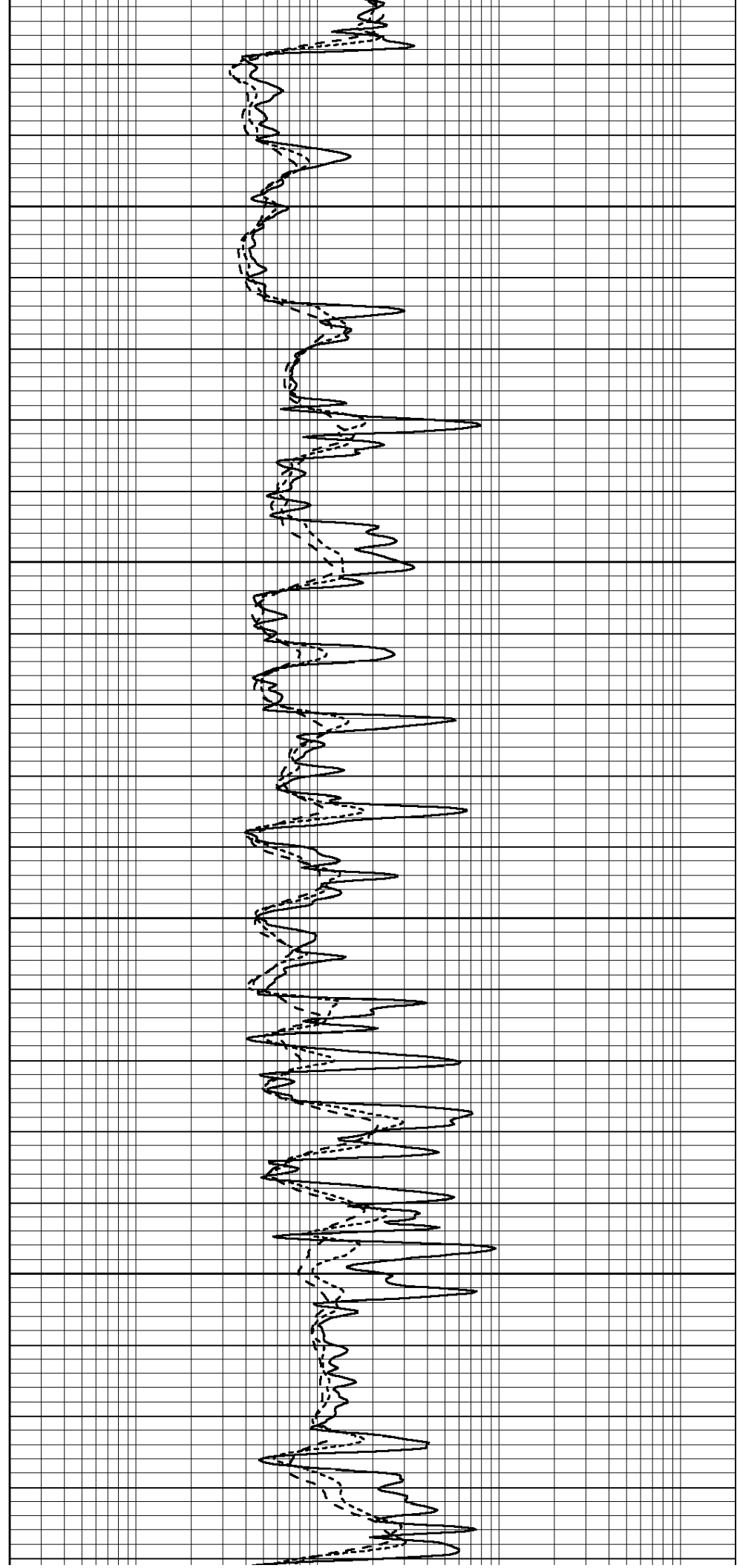


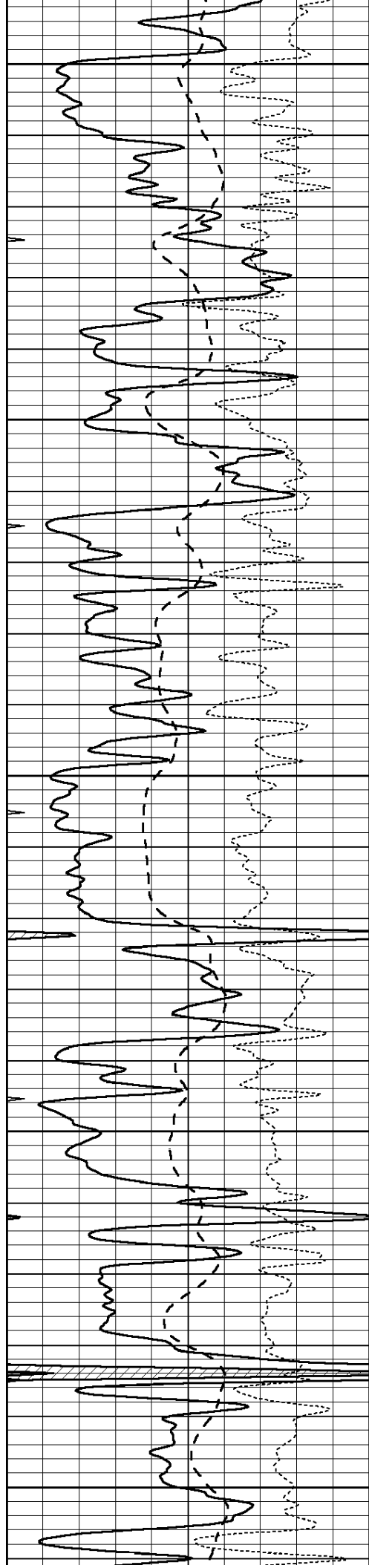
3400

3450

3500

3550





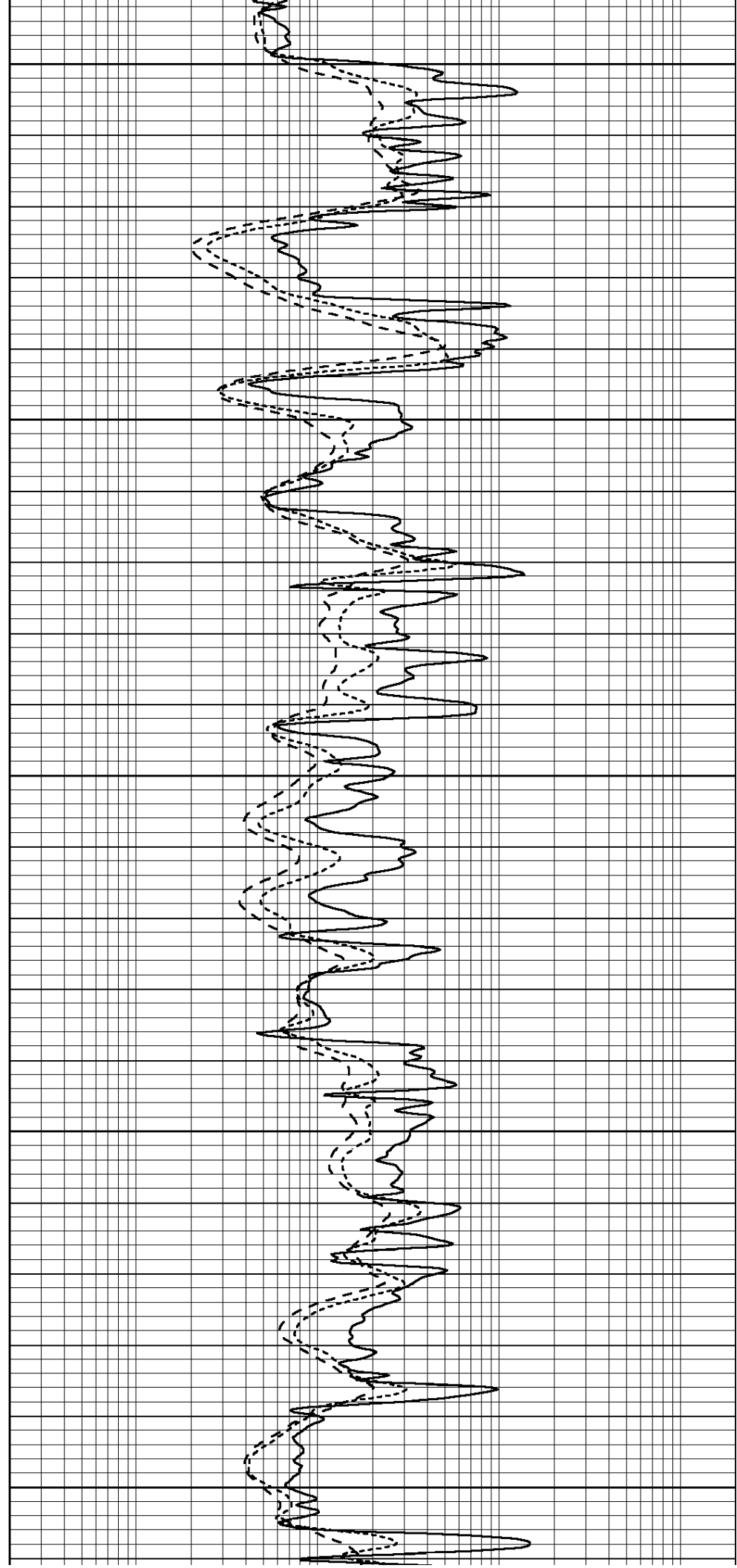
3600

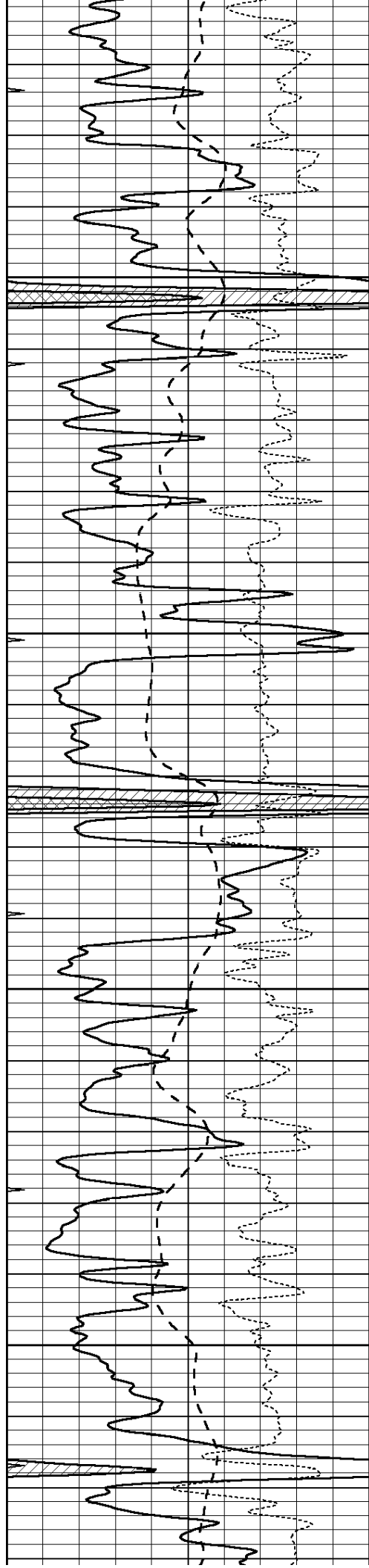
3650

3700

3750

3800



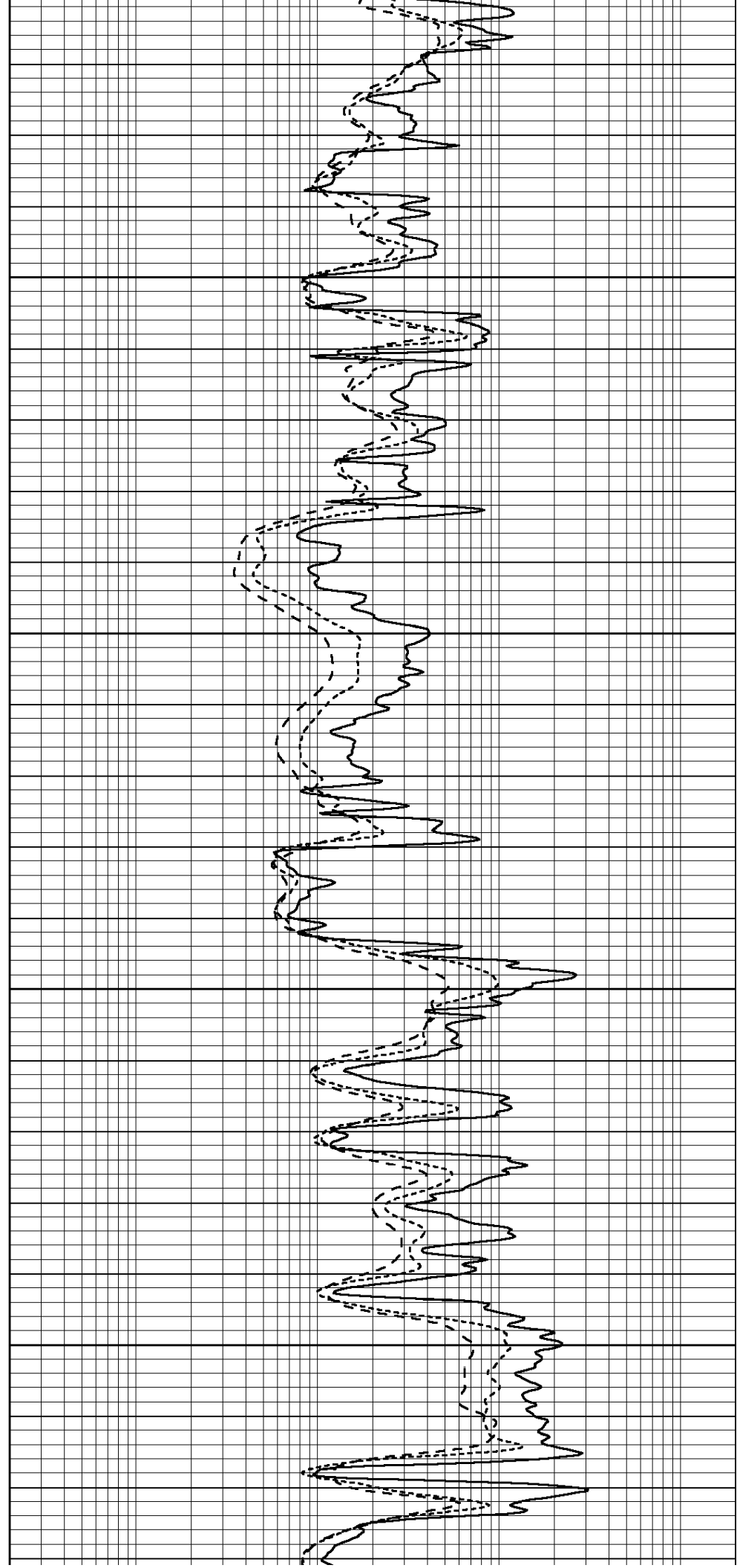


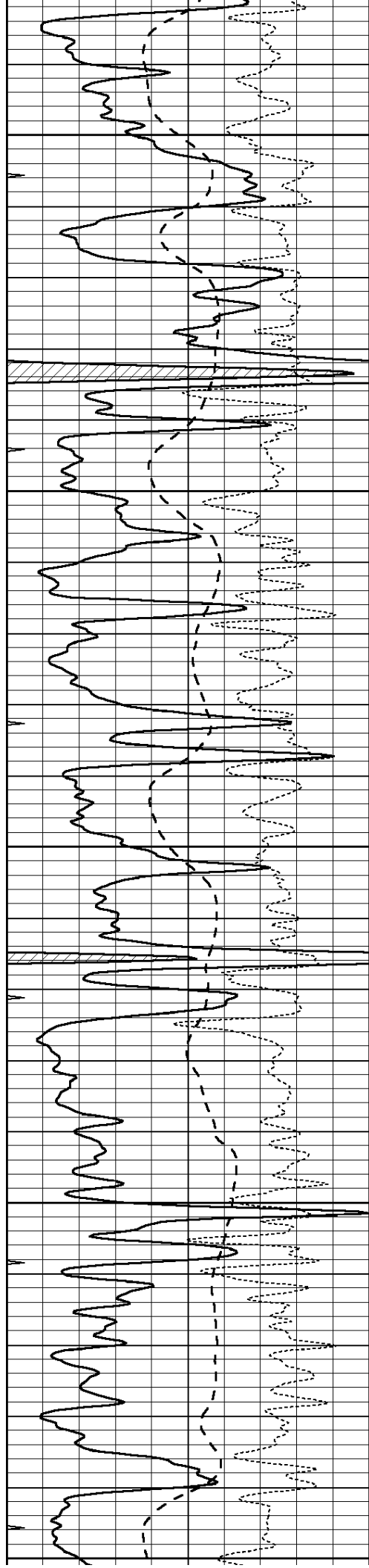
3850

3900

3950

4000





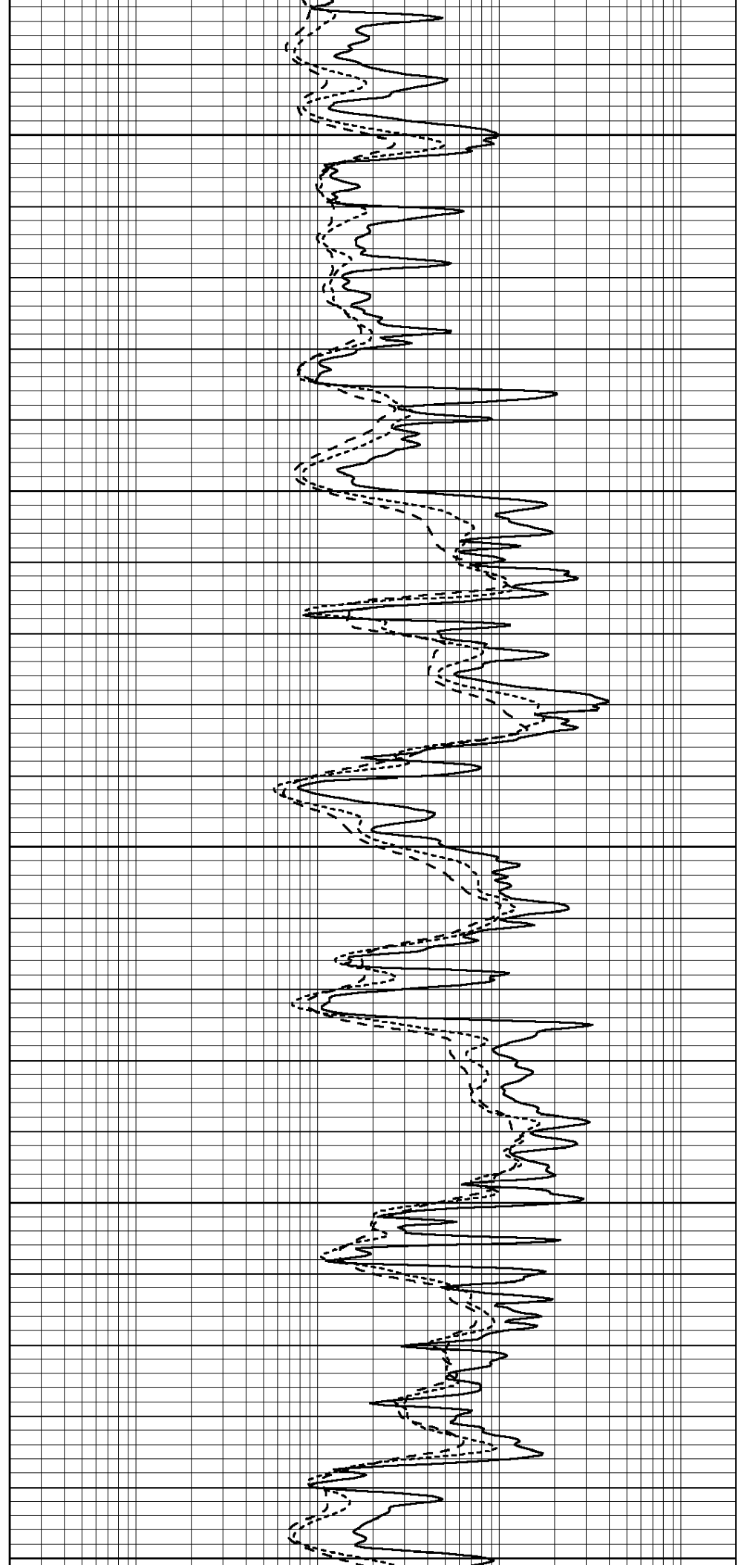
4050

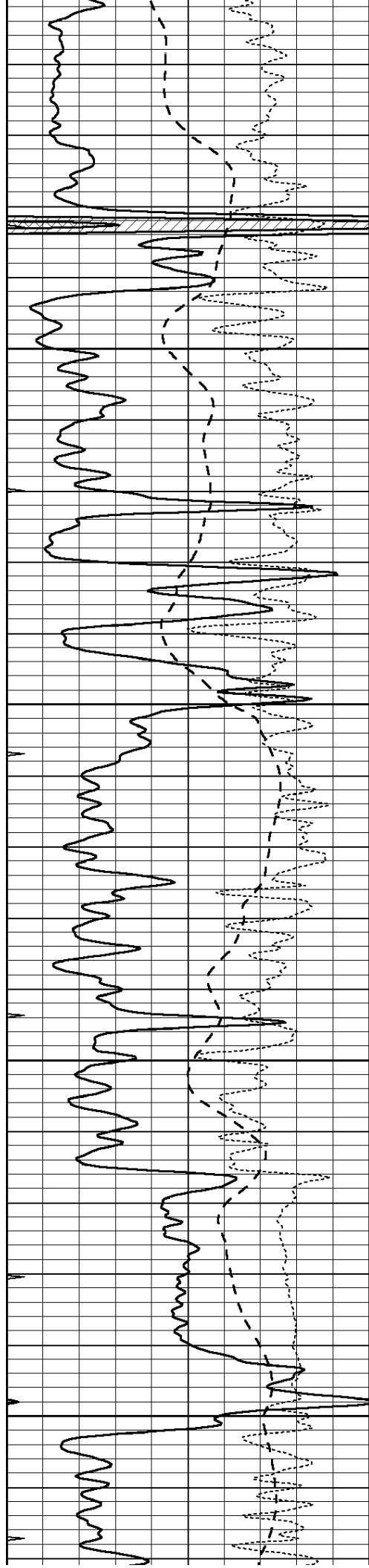
4100

4150

4200

4250



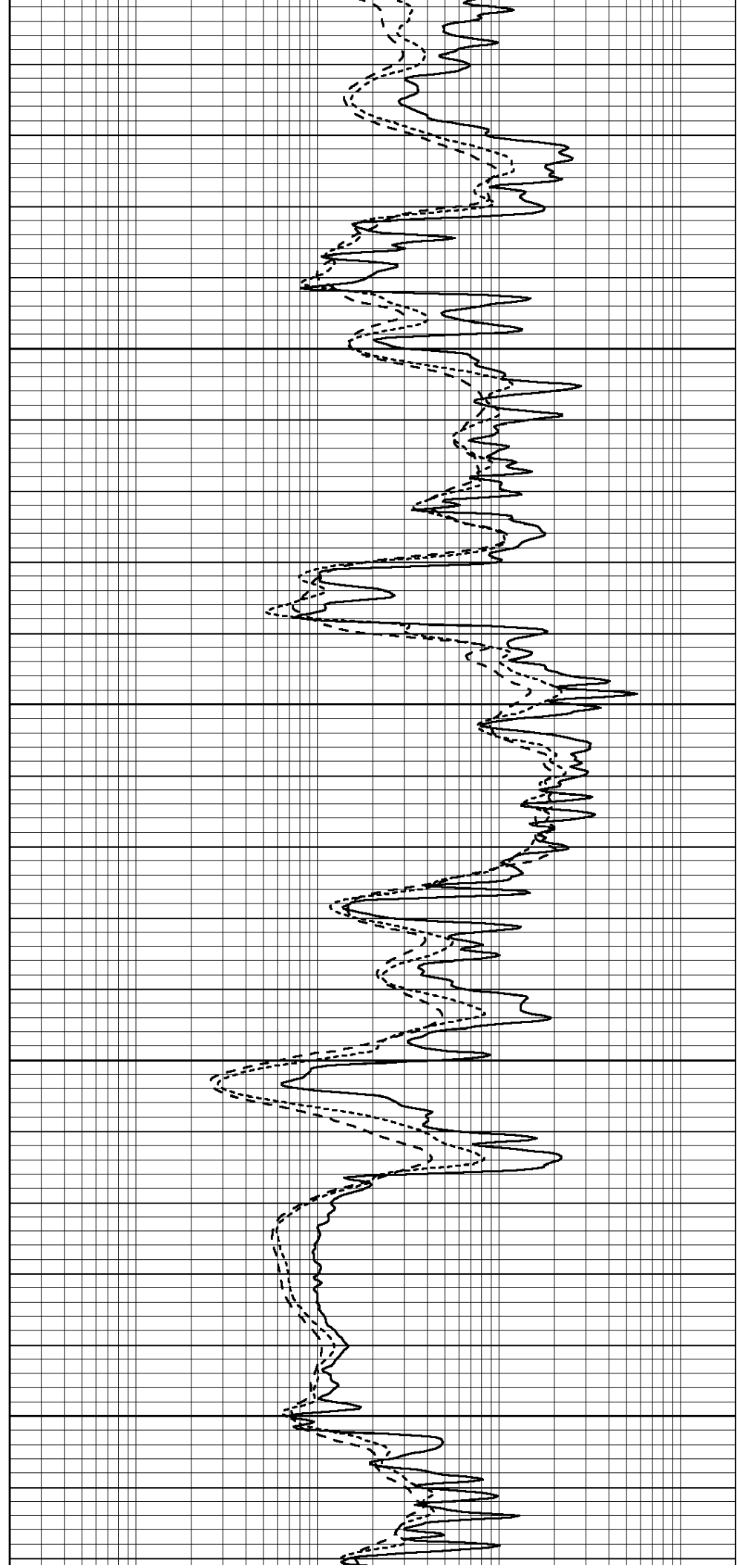


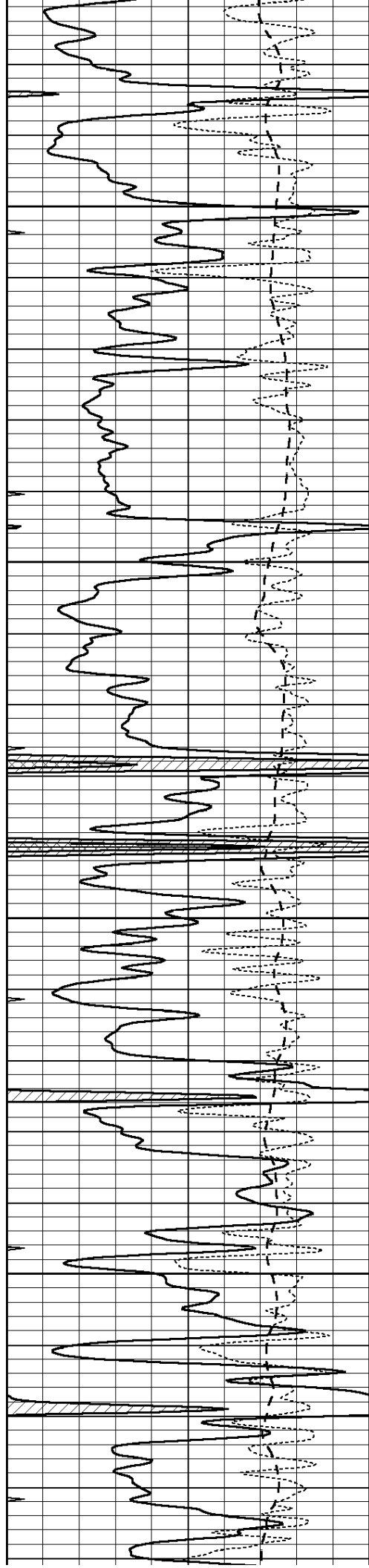
4300

4350

4400

4450



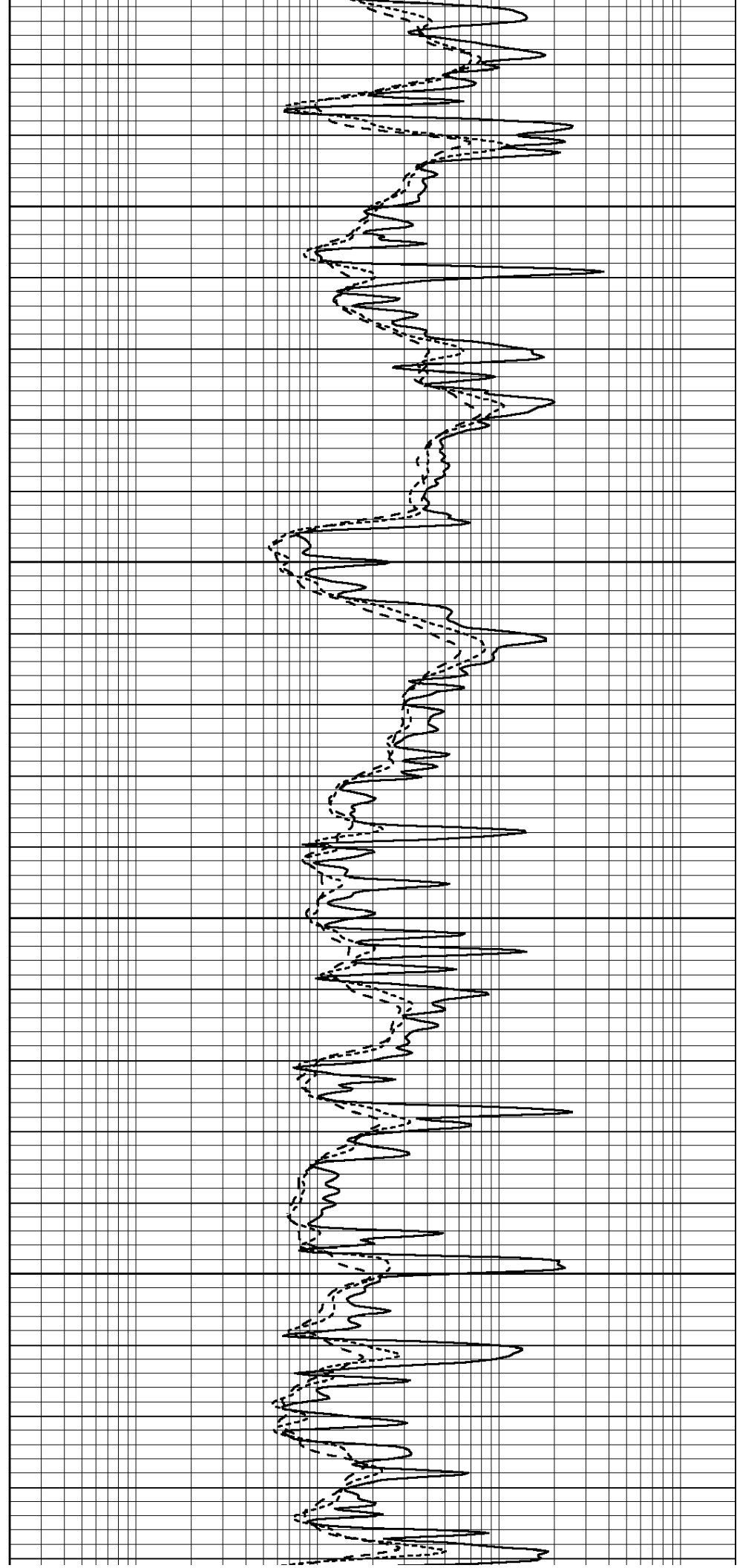


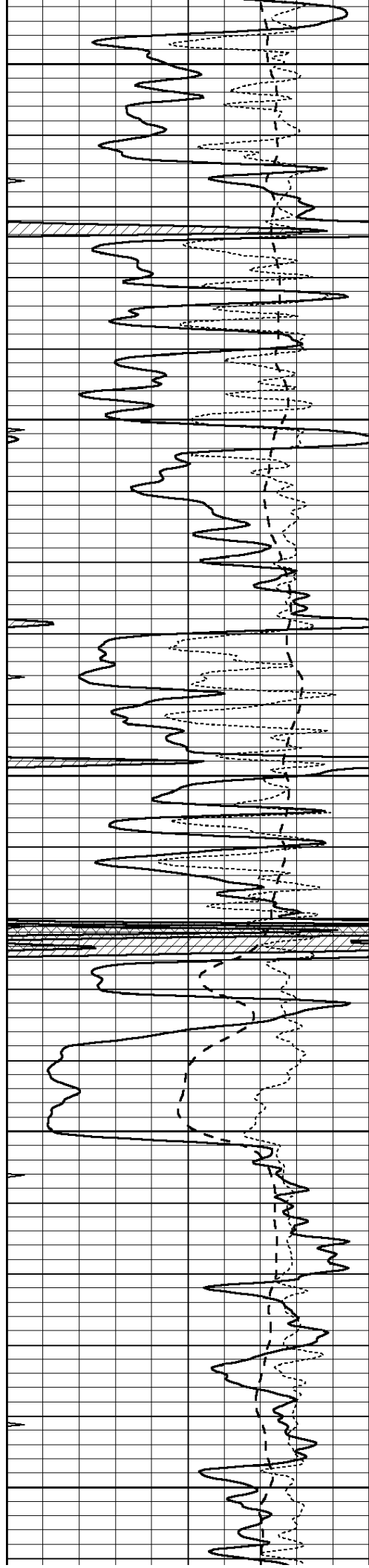
4500

4550

4600

4650





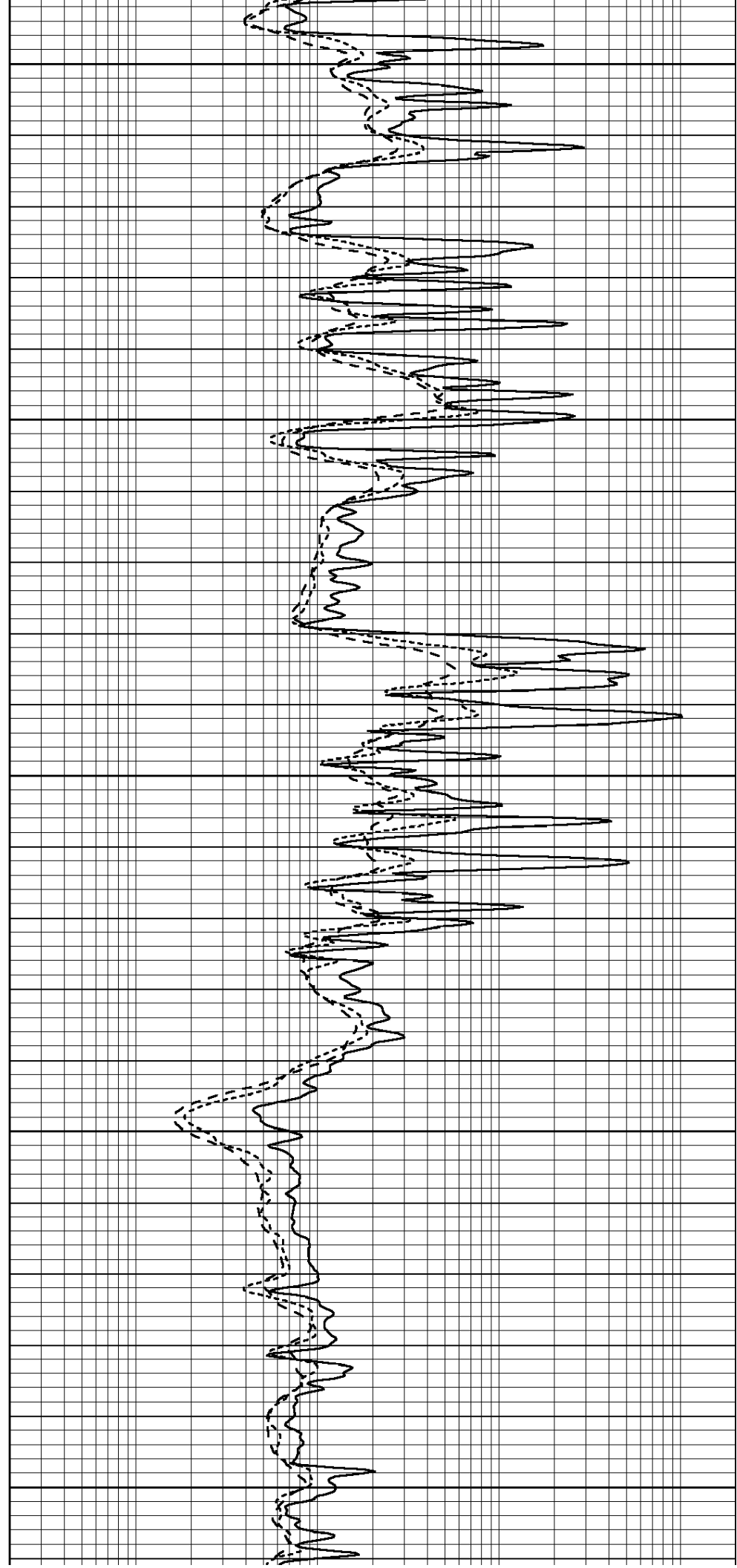
4700

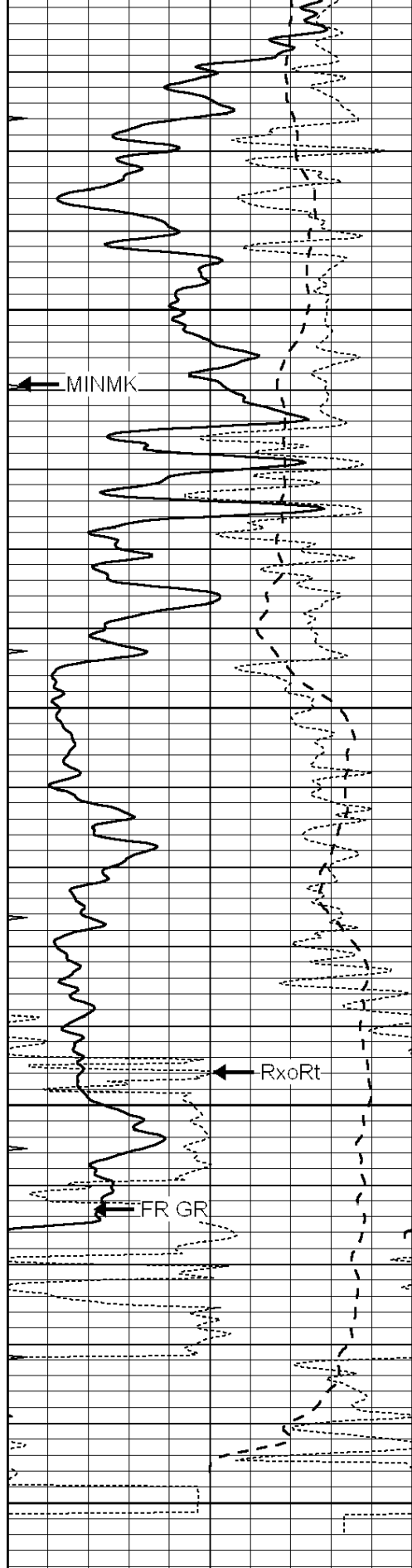
4750

4800

4850

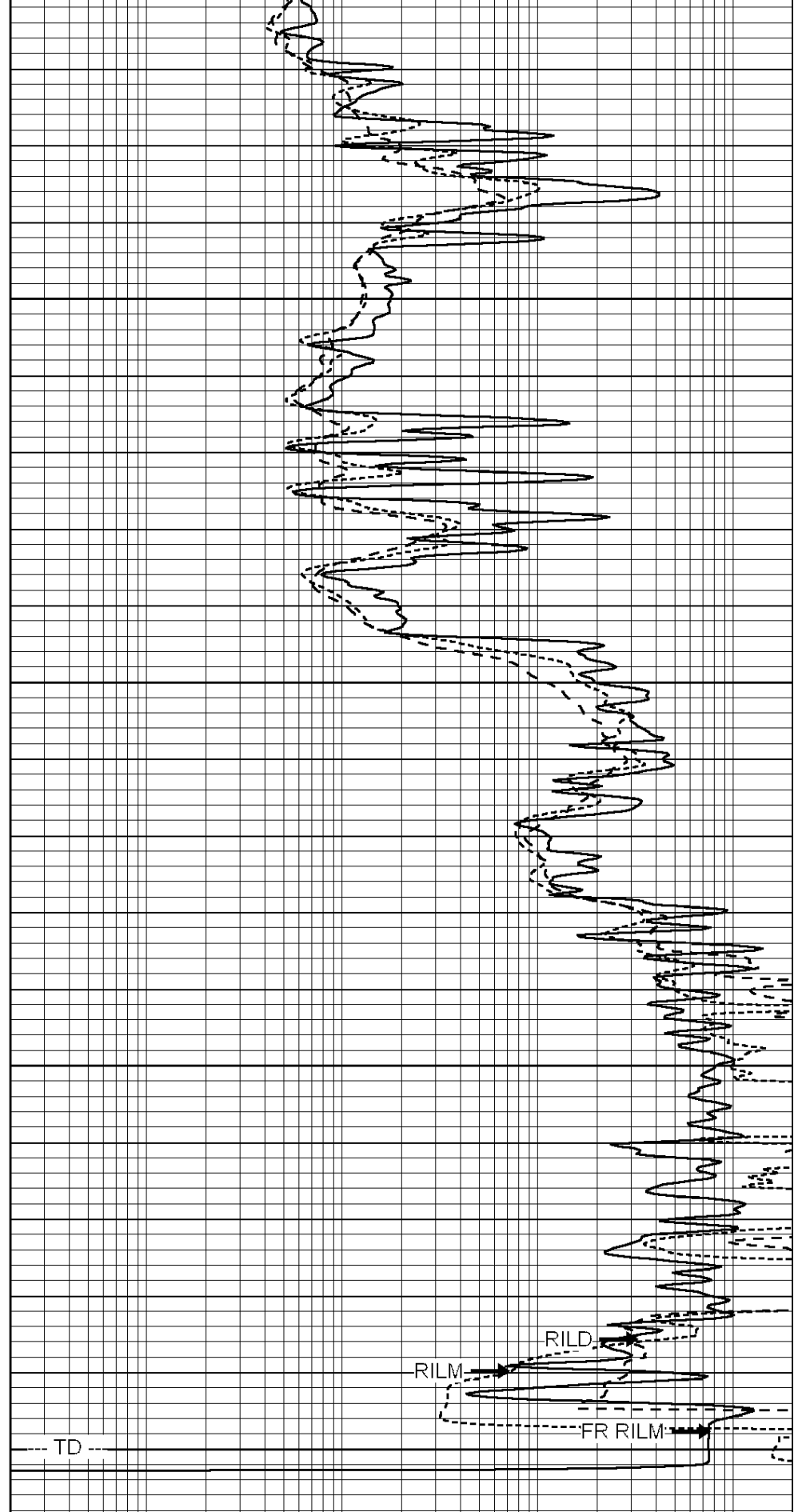
4900





4950
5000
5050
5100

0	GAMMA RAY (GAPI)	150
-100	SP (mV)	100
-250	RxoRt	50
0	MINMK	20



0.2	RLL3 (Ohm-m)	2000
0.2	DEEP INDUCTION (Ohm-m)	2000
0.2	MEDIUM INDUCTION (Ohm-m)	2000



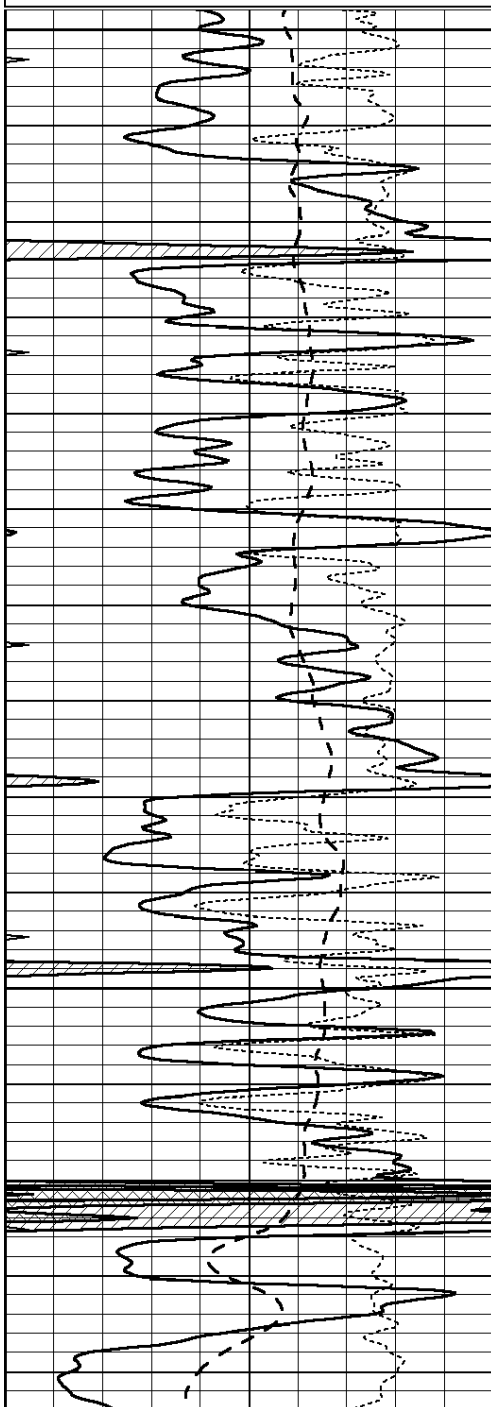
**COMPLETION
& PRODUCTION
SERVICES CO.**

REPEAT SECTION

Database File: 24428ddn.db
 Dataset Pathname: pass4.2
 Presentation Format: _dil
 Dataset Creation: Thu May 08 20:15:54 2014
 Charted by: Depth in Feet scaled 1:240

0	GAMMA RAY (GAPI)	150
-100	SP (mV)	100
-250	RxoRt	50
0	MINMK	20

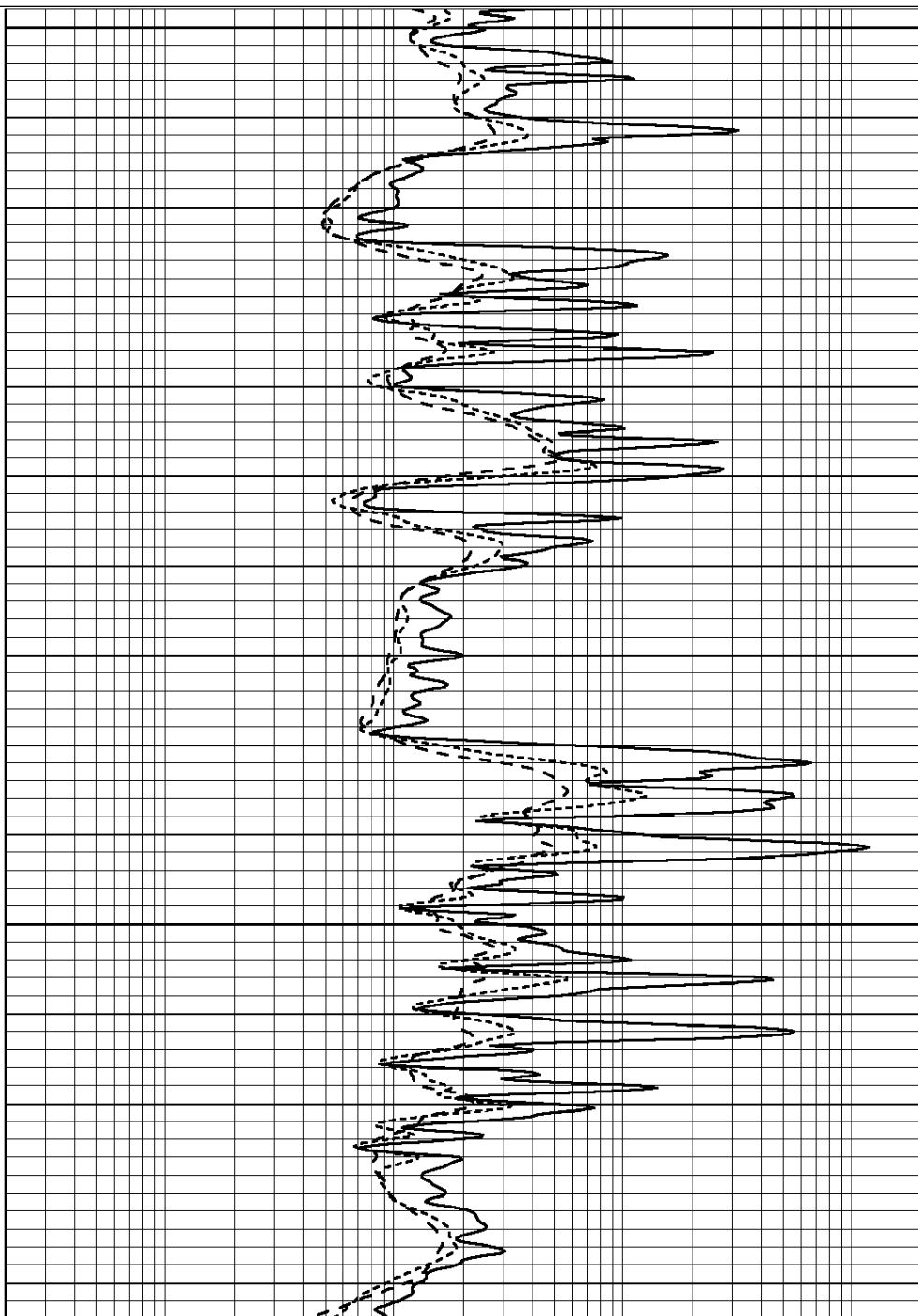
0.2	RLL3 (Ohm-m)	2000
0.2	DEEP INDUCTION (Ohm-m)	2000
0.2	MEDIUM INDUCTION (Ohm-m)	2000

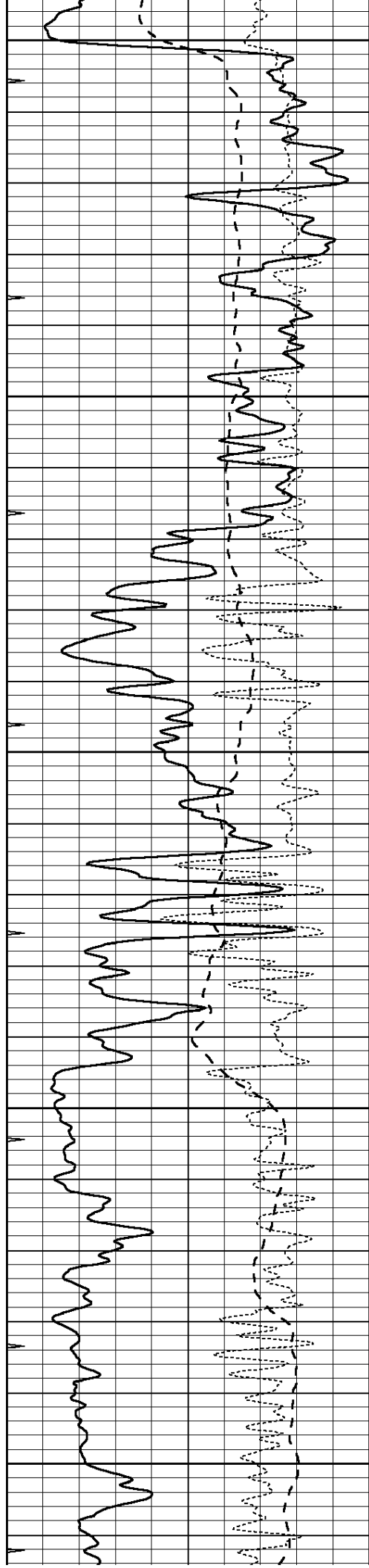


4700

4750

4800





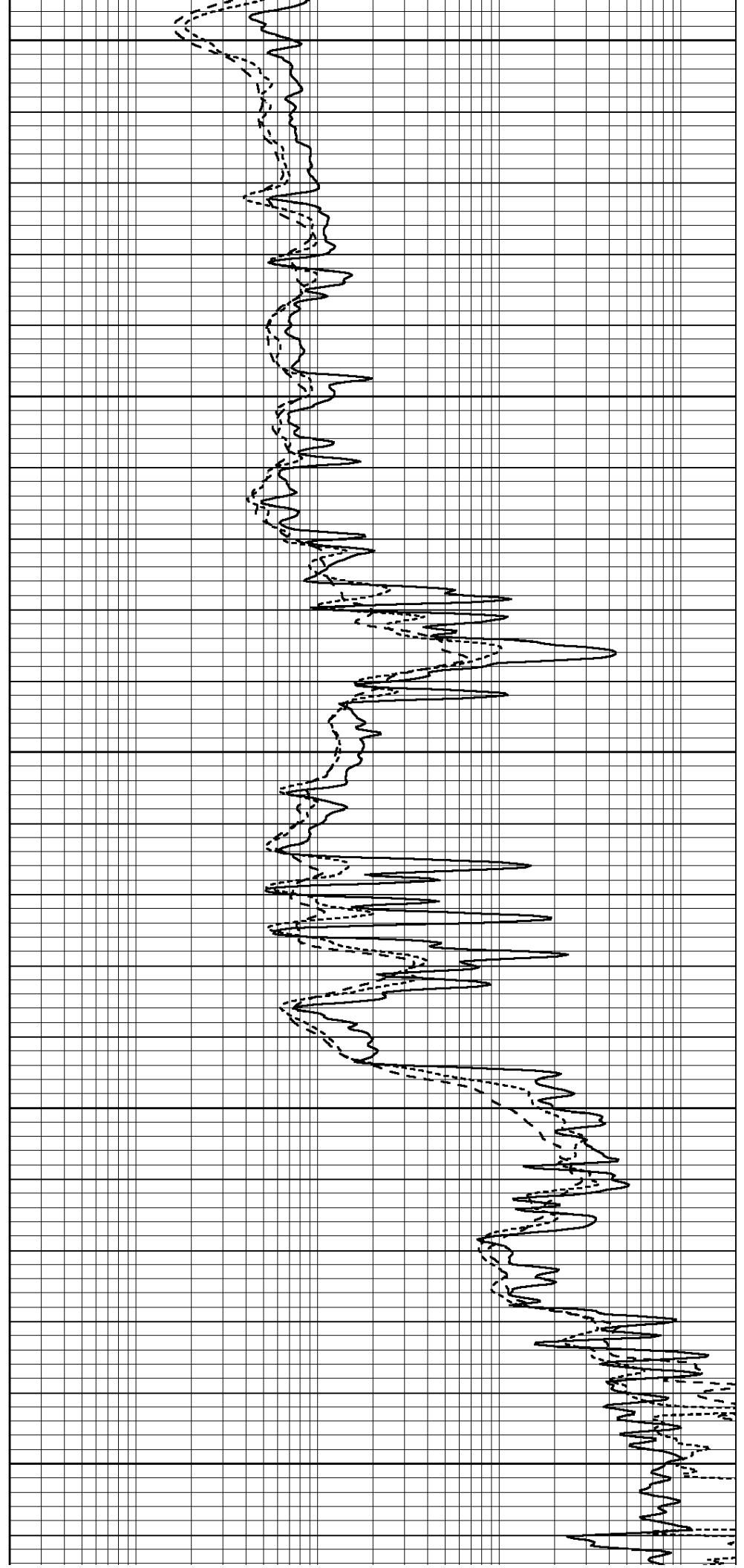
4850

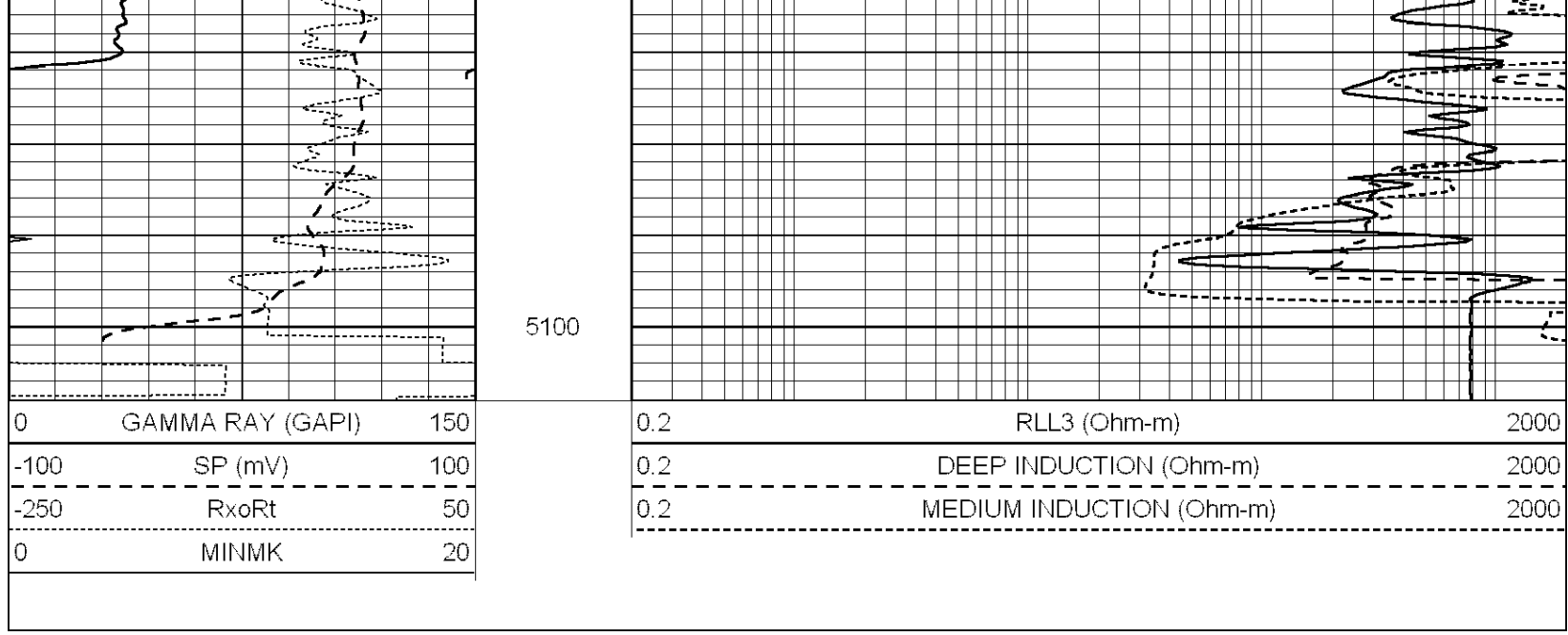
4900

4950

5000

5050





Calibration Report

Database File: 24428ddn.db
 Dataset Pathname: pass5.1A
 Dataset Creation: Thu May 08 20:07:43 2014

Dual Induction Calibration Report

Serial-Model: DIL3-GEAR
 Performed: Thu May 08 18:45:50 2014

Loop:	Readings			References			Results	
	Air	Loop		Air	Loop		m	b
Deep	0.011	0.656	V	0.000	400.000	mmho/m	550.000	6.000
Medium	0.013	0.740	V	0.000	462.500	mmho/m	540.000	-2.000
Internal:	Zero	Cal		Zero	Cal		m	b
Deep	0.002	0.645	V	0.000	400.000	mmho/m	560.000	-1.071
Medium	0.007	0.740	V	0.000	462.500	mmho/m	540.000	-4.000

Compensated Density Calibration Report

Serial-Model: GEAR2-GEARHART
 Source / Verifier: 147 / 147
 Master Calibration Performed: Sat Feb 15 00:21:33 2014

Master Calibration

	Density		Far Detector	Near Detector	
Magnesium	1.710	g/cc	923.76	475.45	cps
Aluminum	2.580	g/cc	205.31	331.69	cps
Spine Angle = 76.54			Density/Spine Ratio = 0.563		
	Size		Reading		
Small Ring	8.40	in	3.59	V	
Large Ring	14.00	in	5.47	V	

Compensated Neutron Calibration Report

Serial Number: 080620
 Tool Model: Probe

Tool Model:

Probe

PRE-SURVEY VERIFICATION

Detector	Readings	Measured	Target
Short Space	cps		
Long Space	cps	pu	pu

POST-SURVEY VERIFICATION

Detector	Readings	Measured	Target
Short Space	cps		
Long Space	cps	pu	pu

Gamma Ray Calibration Report

Serial Number:	7	
Tool Model:	Probe1	
Performed:	Thu May 08 17:53:01 2014	
Calibrator Value:	1.0	GAPI
Background Reading:	0.0	cps
Calibrator Reading:	1.0	cps
Sensitivity:	0.3000	GAPI/cps