



Pioneer Energy Services

Dual Induction Log

15-047-21643-00-00

Company Toto Energy, LLC
Well River Dance #25-1
Field Wils
County Edwards **State** Kansas
Location N2 N2 S2 SW
 1245' FSL / 1320' FWL
Sec: 25 **Twp:** 25S **Rge:** 16W
Permanent Datum Ground Level **Elevation** 2046
Log Measured From Kelly Bushing **6 Ft. Above Perm. Datum**
Drilling Measured From Kelly Bushing
Other Services CNL / CDL MEL
Elevation K.B. 2052
 D.F. G.L. 2046

Date	6/22/2014
Run Number	One
Depth Driller	4804
Depth Logger	4804
Bottom Logged Interval	4803
Top Log Interval	300
Casing Driller	8.625 @ 307
Casing Logger	306
Bit Size	7.875
Type Fluid in Hole	Chemical
Salinity, ppm CL	8900
Density / Viscosity	9.3 52
pH / Fluid Loss	9.0 11.2
Source of Sample	Flowline
Rm @ Meas. Temp	0.44 @ 80
Rmf @ Meas. Temp	0.33 @ 80
Rmc @ Meas. Temp	0.59 @ 80
Source of Rmf / Rmc	Charts
Rm @ BHT	0.28 @ 124
Operating Rig Time	4 Hours
Max Rec. Temp. F	124
Equipment Number	17
Location	Hays
Recorded By	R. Barnhart
Witnessed By	Sonia McDanel

<<< Fold Here >>>

All interpretations are opinions based on inferences from electrical or other measurements and we cannot and do not guarantee the accuracy or correctness of any interpretation, and we shall not, except in the case of gross or willful negligence on our part, be liable or responsible for any loss, costs, damages, or expenses incurred or sustained by anyone resulting from any interpretation made by any of our officers, agents or employees. These interpretations are also subject to our general terms and conditions set out in our current Price Schedule.

Comments

Thank you for using Log-Tech, Inc.
 (785) 625-3858

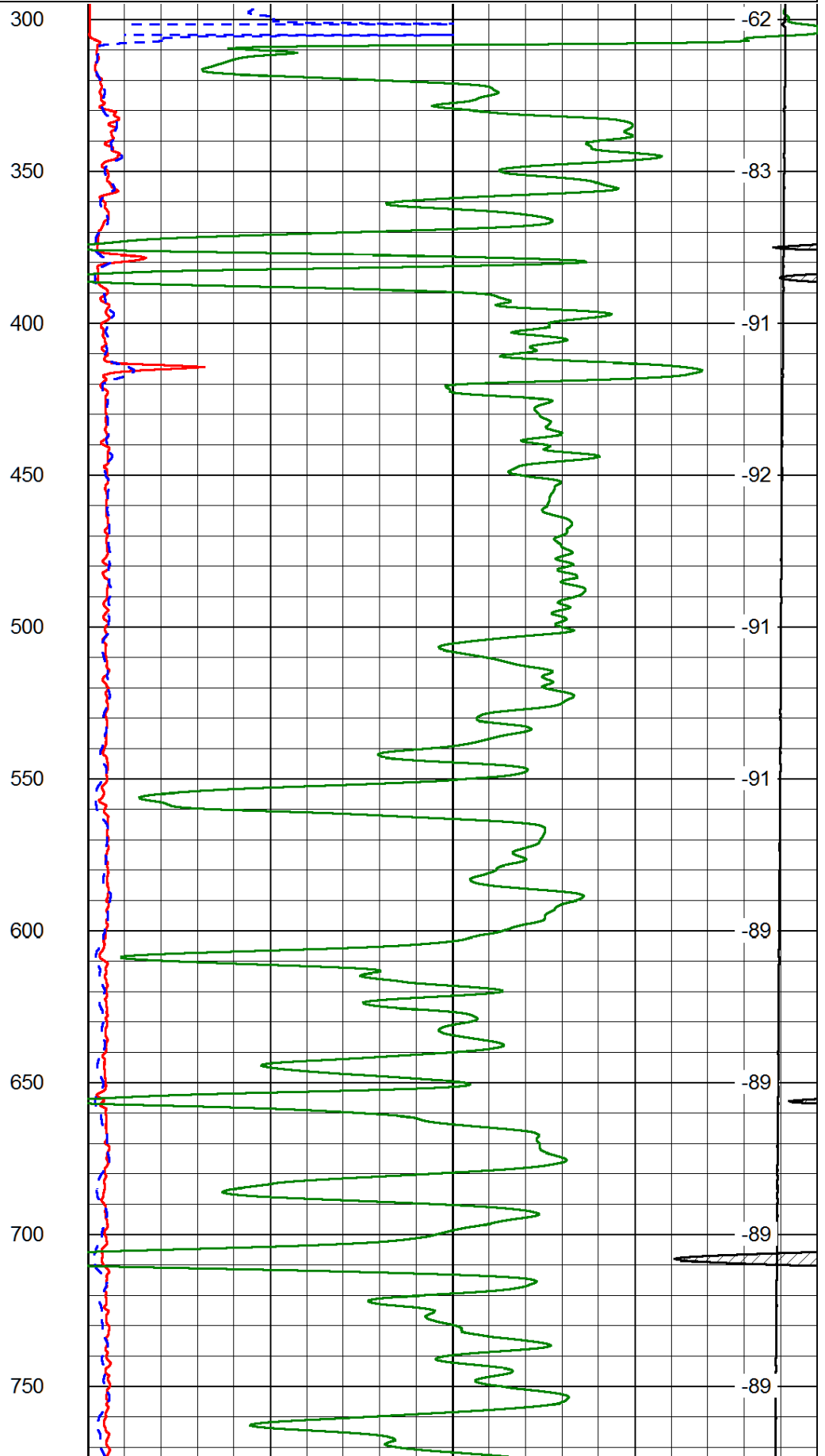
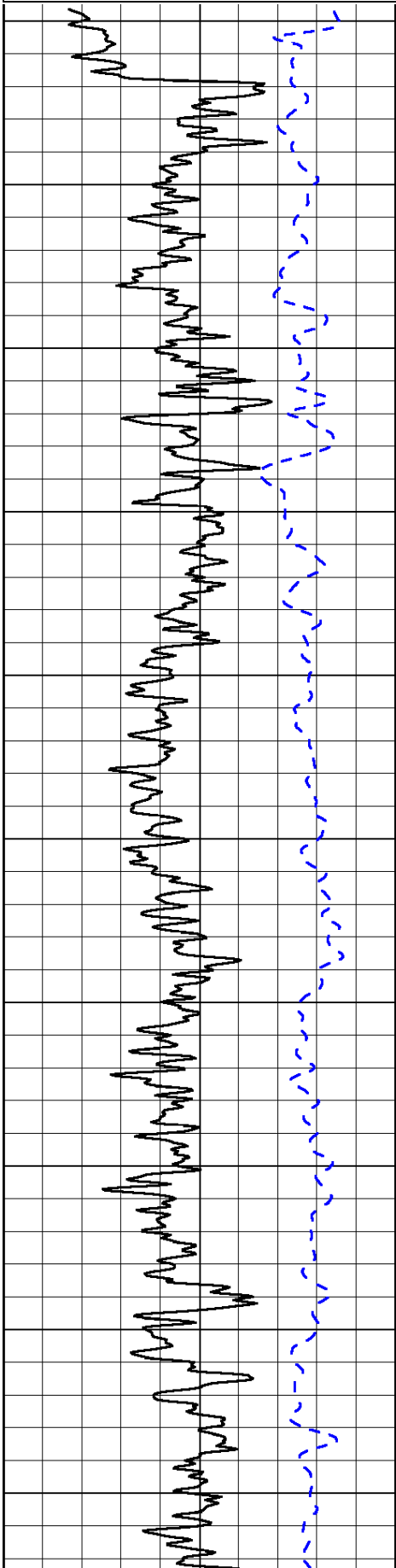
 St. John, KS:
 Hwy 283 & Hwy 50: 7S to 70 Rd., 16E, 3/4S, E into

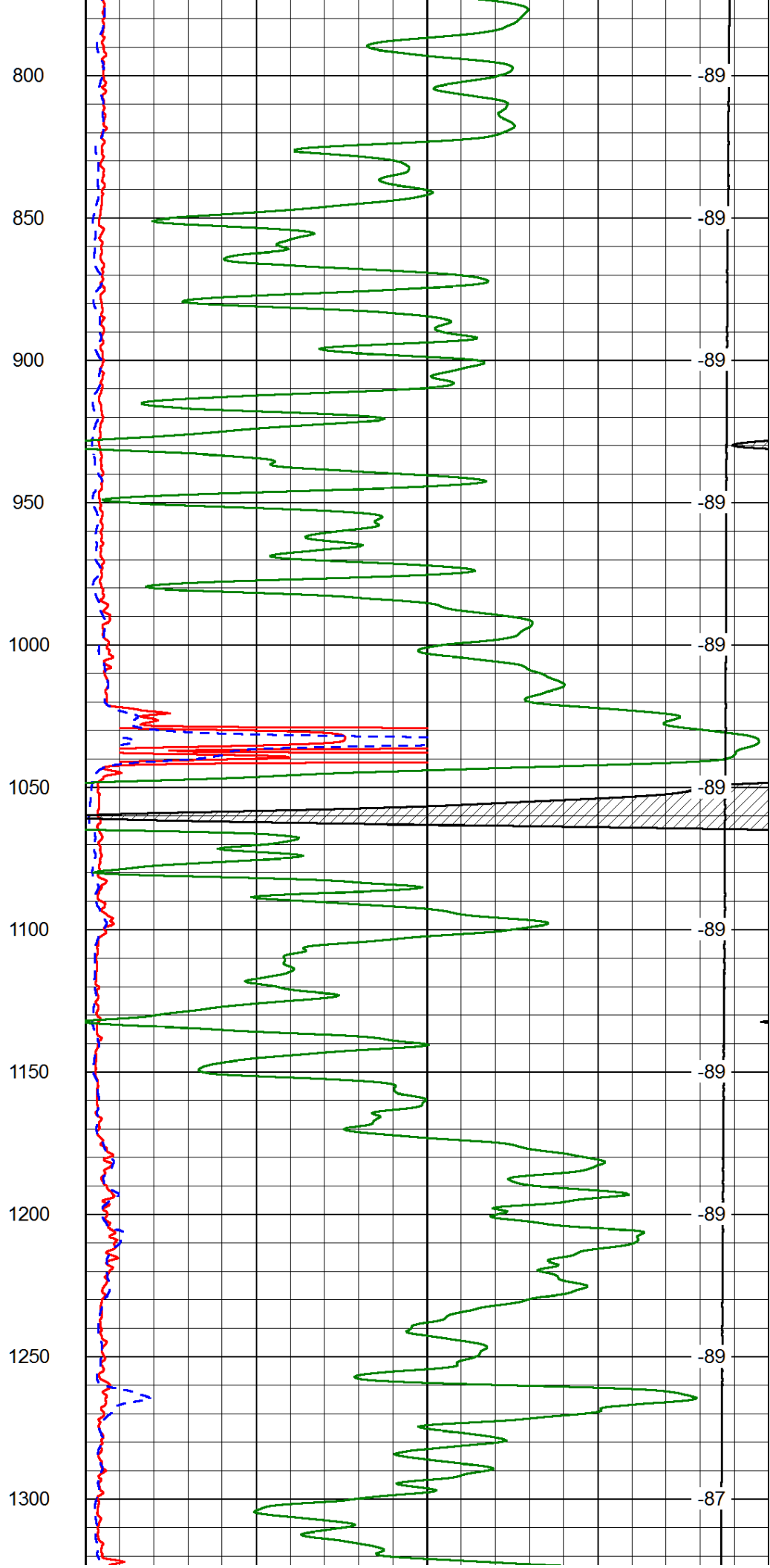
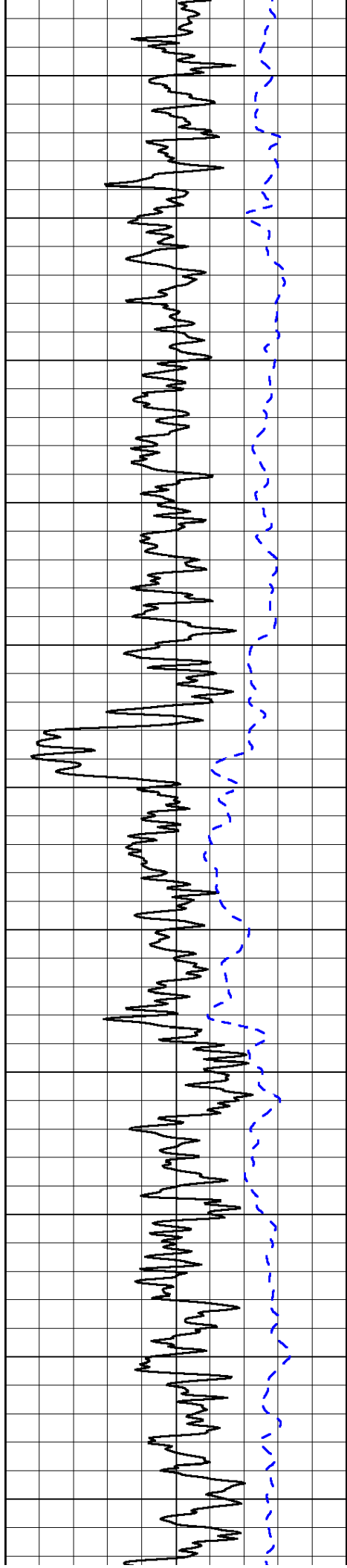
Database File: toto hd.db
 Dataset Pathname: dil/totmain
 Presentation Format: dil2in
 Dataset Creation: Sun Jun 22 05:43:30 2014
 Charted by: Depth in Feet scaled 1:600

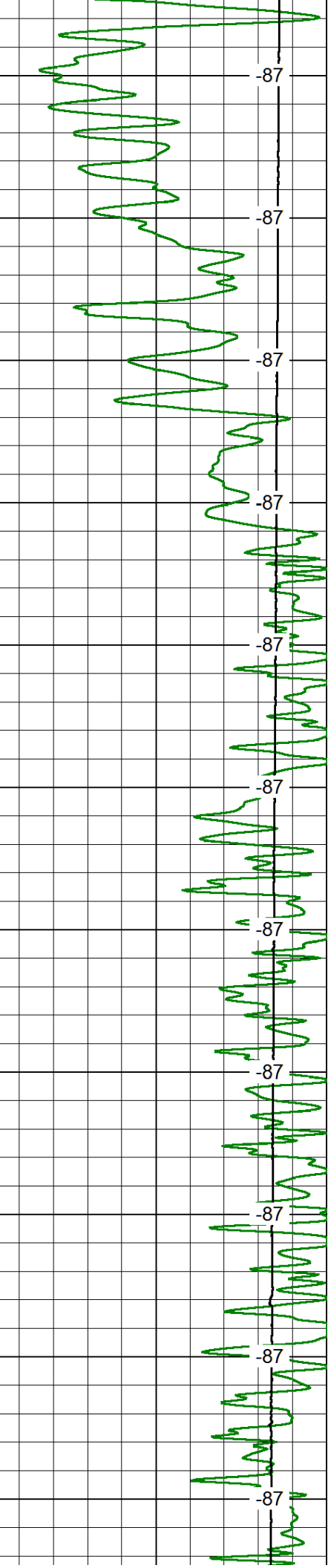
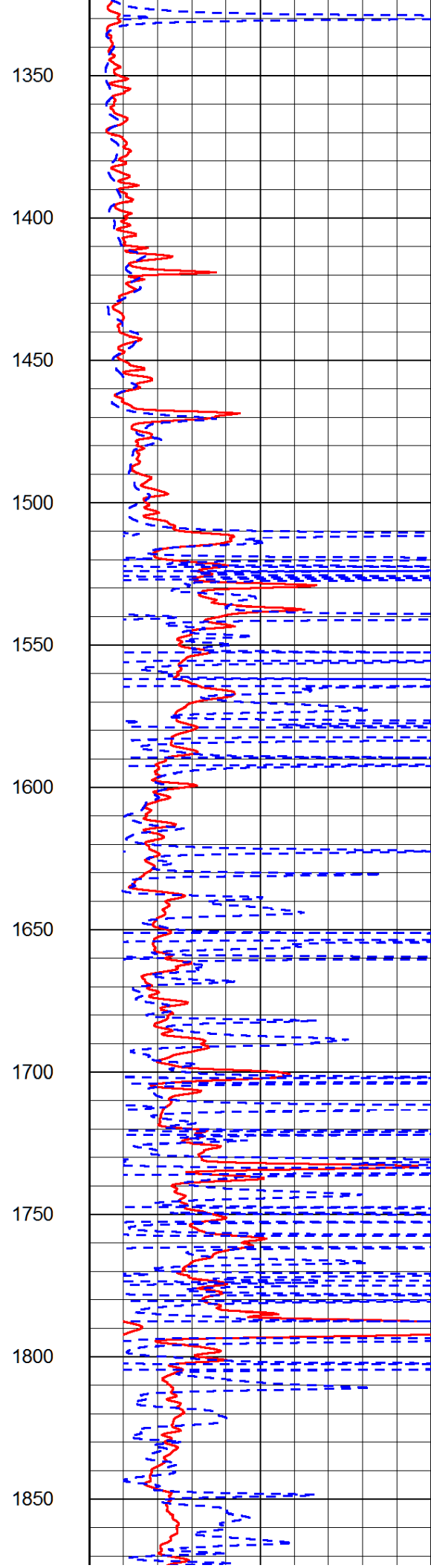
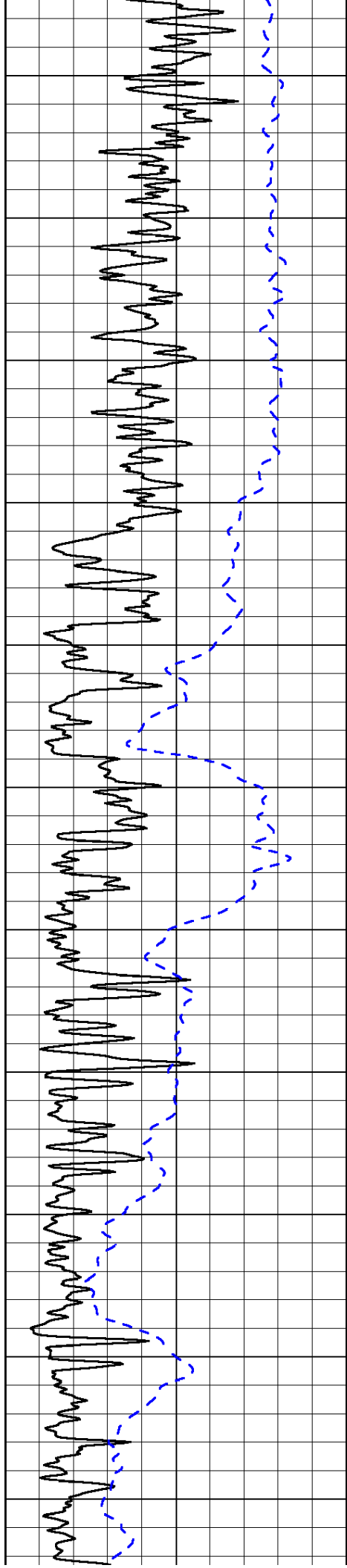
0	Gamma Ray	150
-200	SP (mV)	0

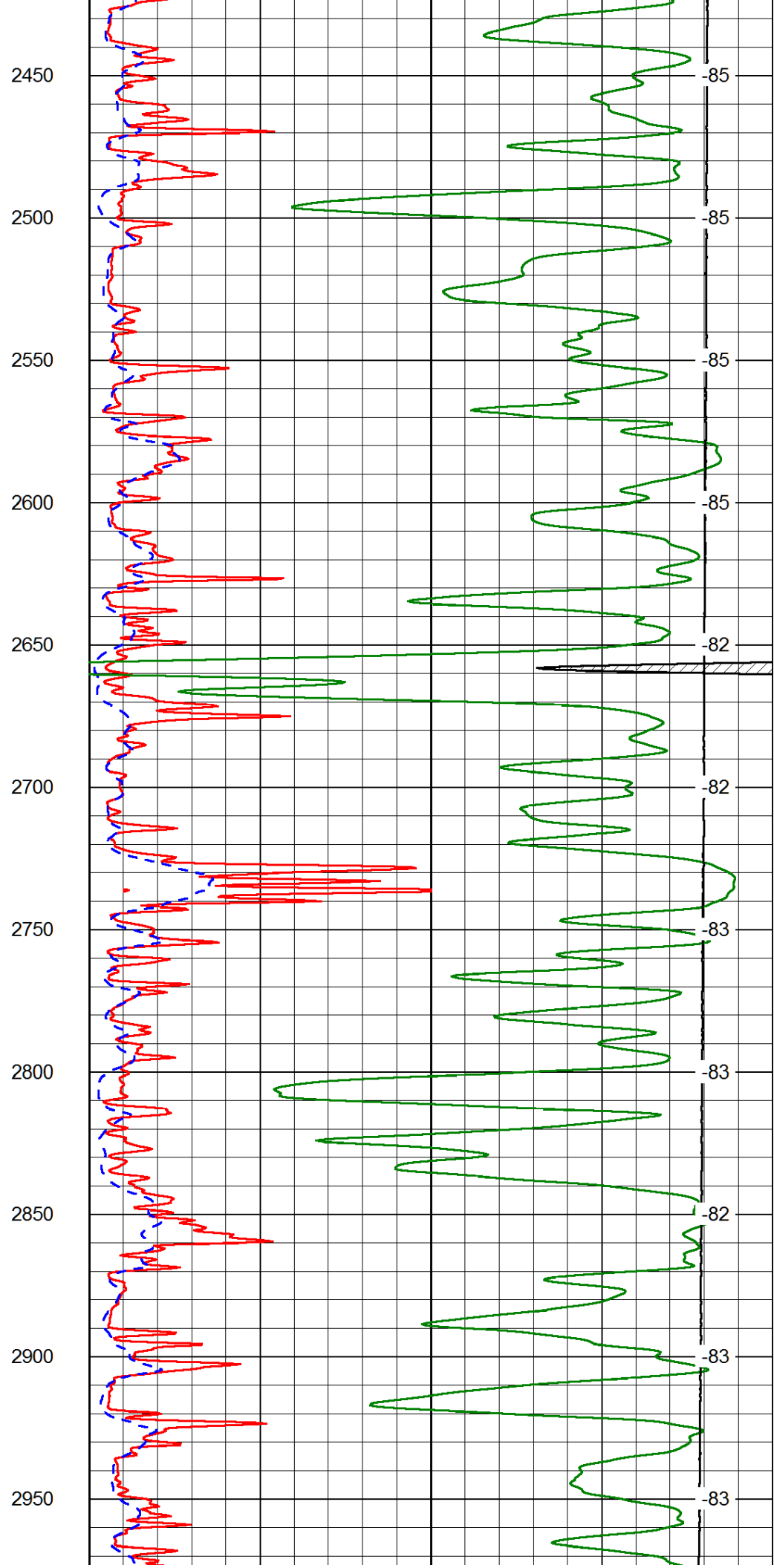
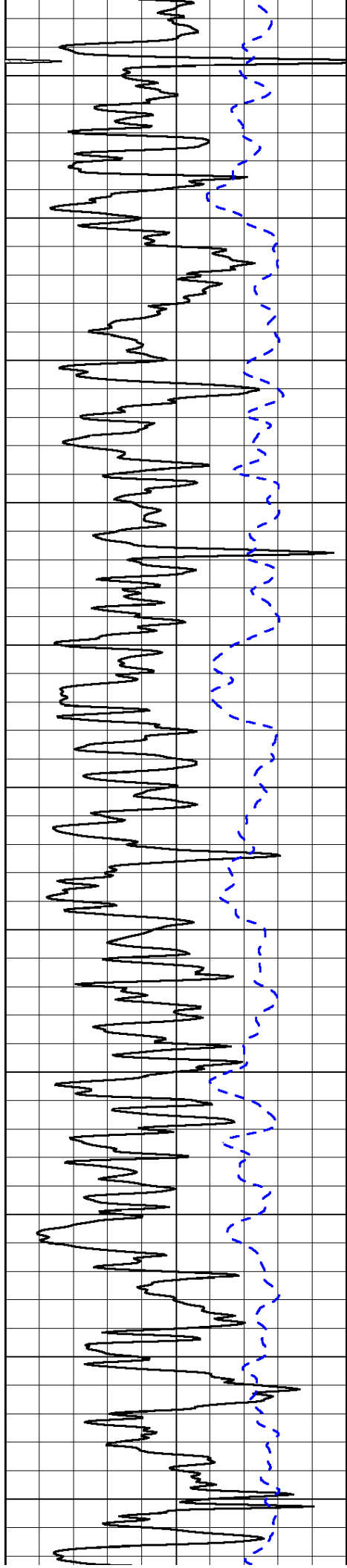
0	Shallow Resistivity	50
0	Deep Resistivity	50
1000	Conductivity	0
15000	Line Tension	0
50	Shallow Resistivity	500
50	Deep Resistivity	500

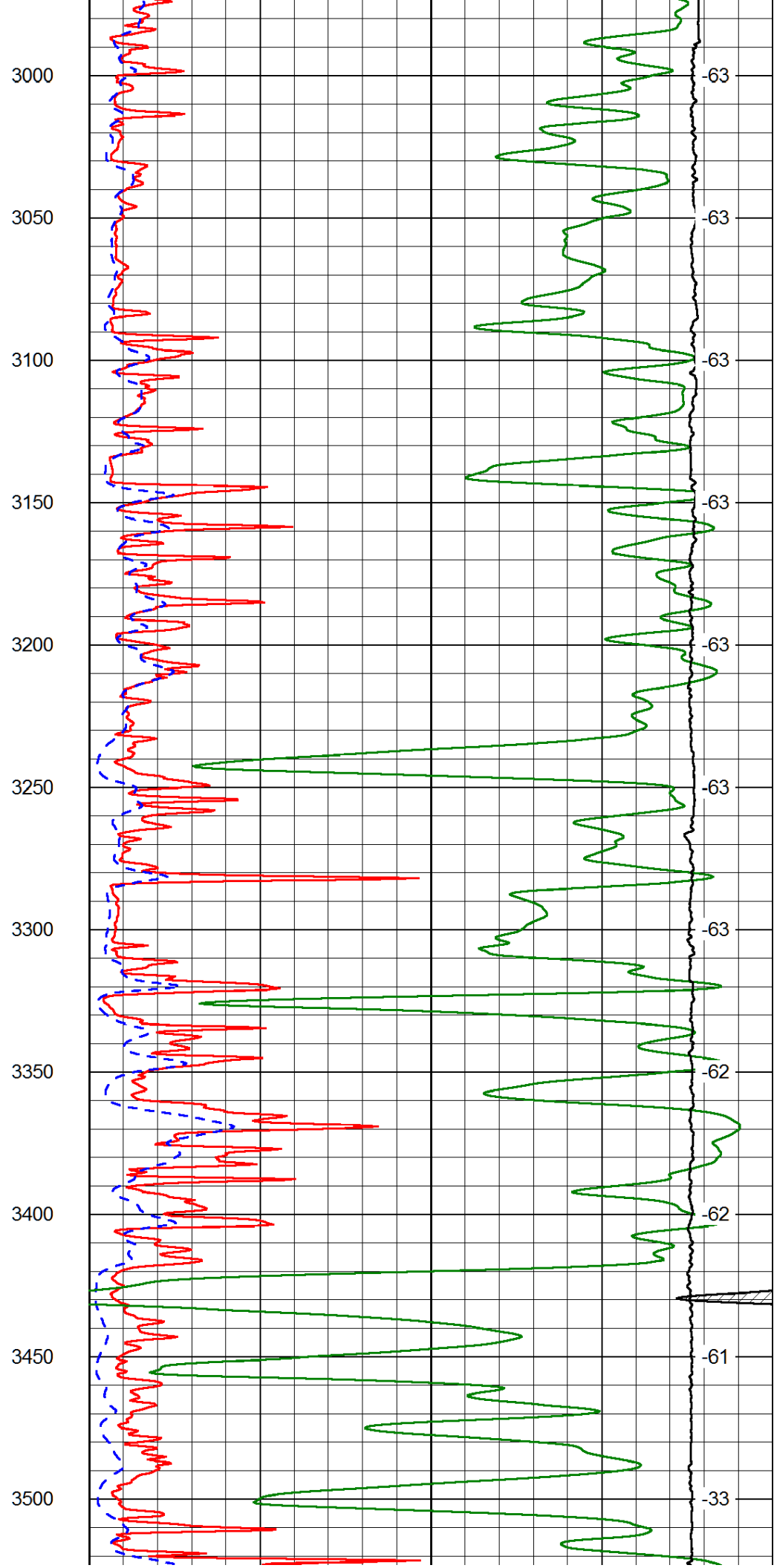
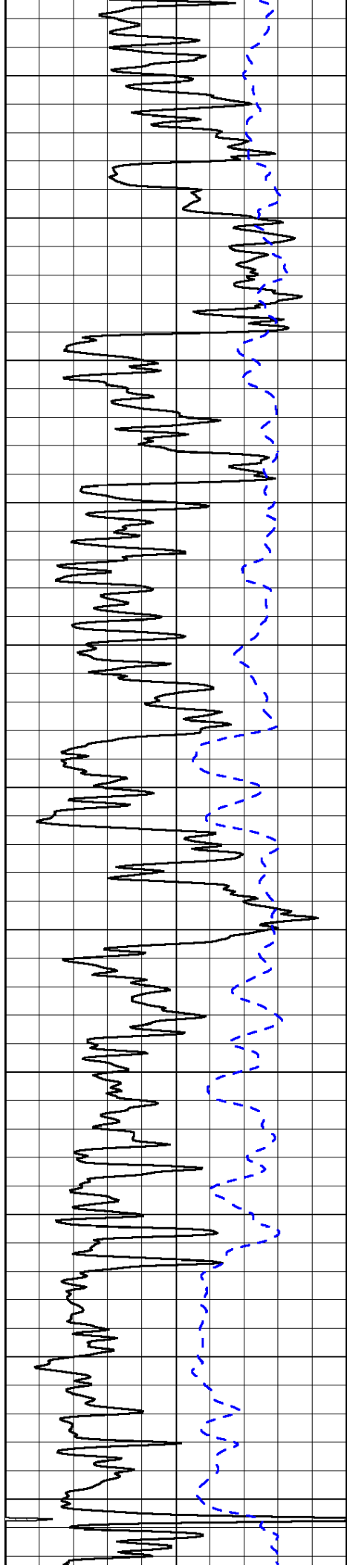
LSPD

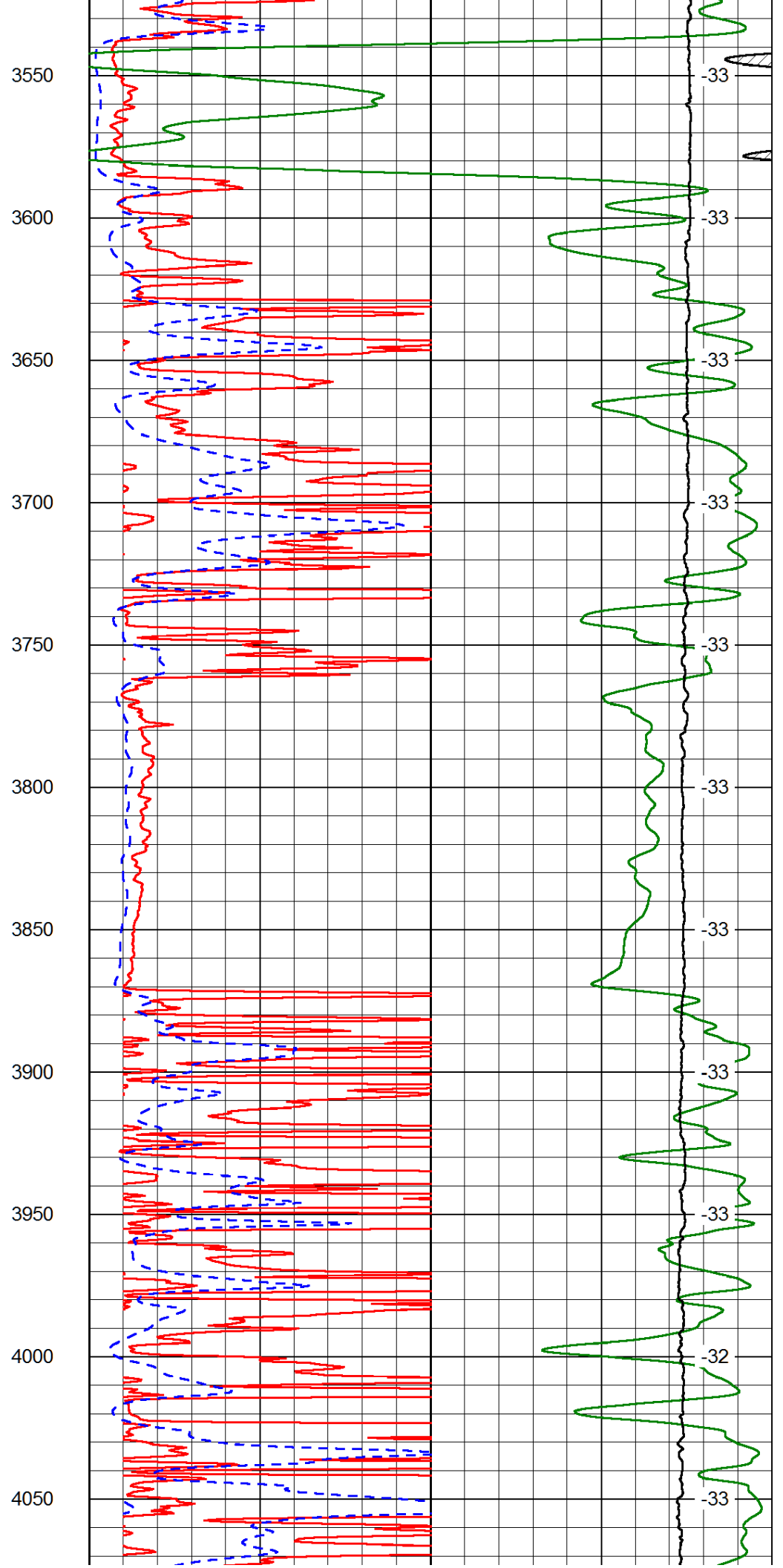
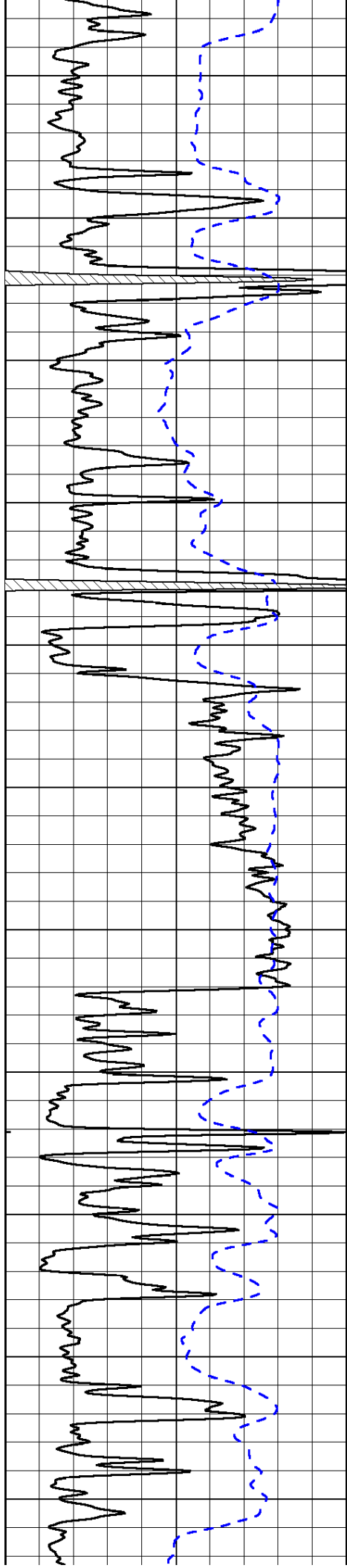


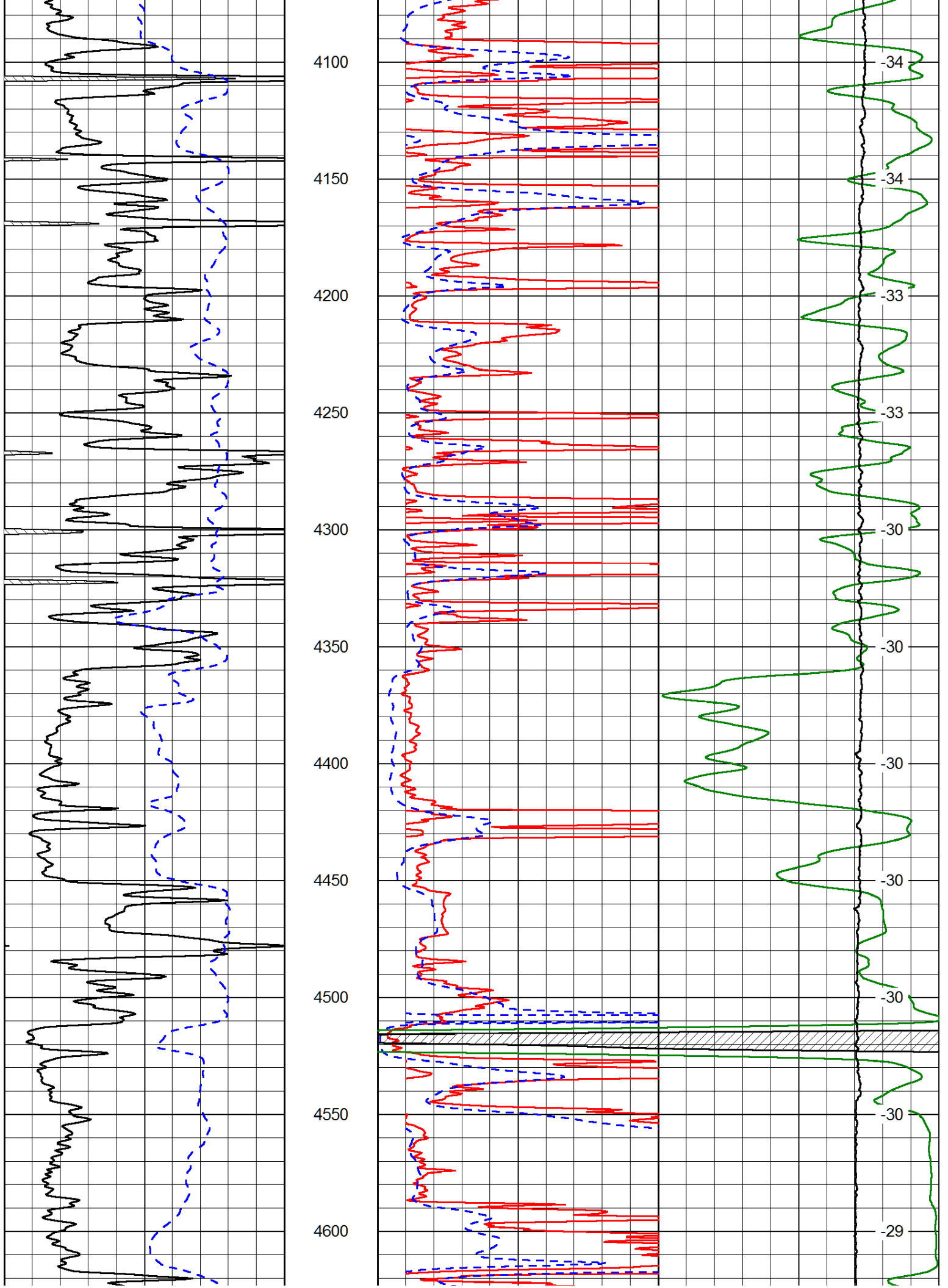


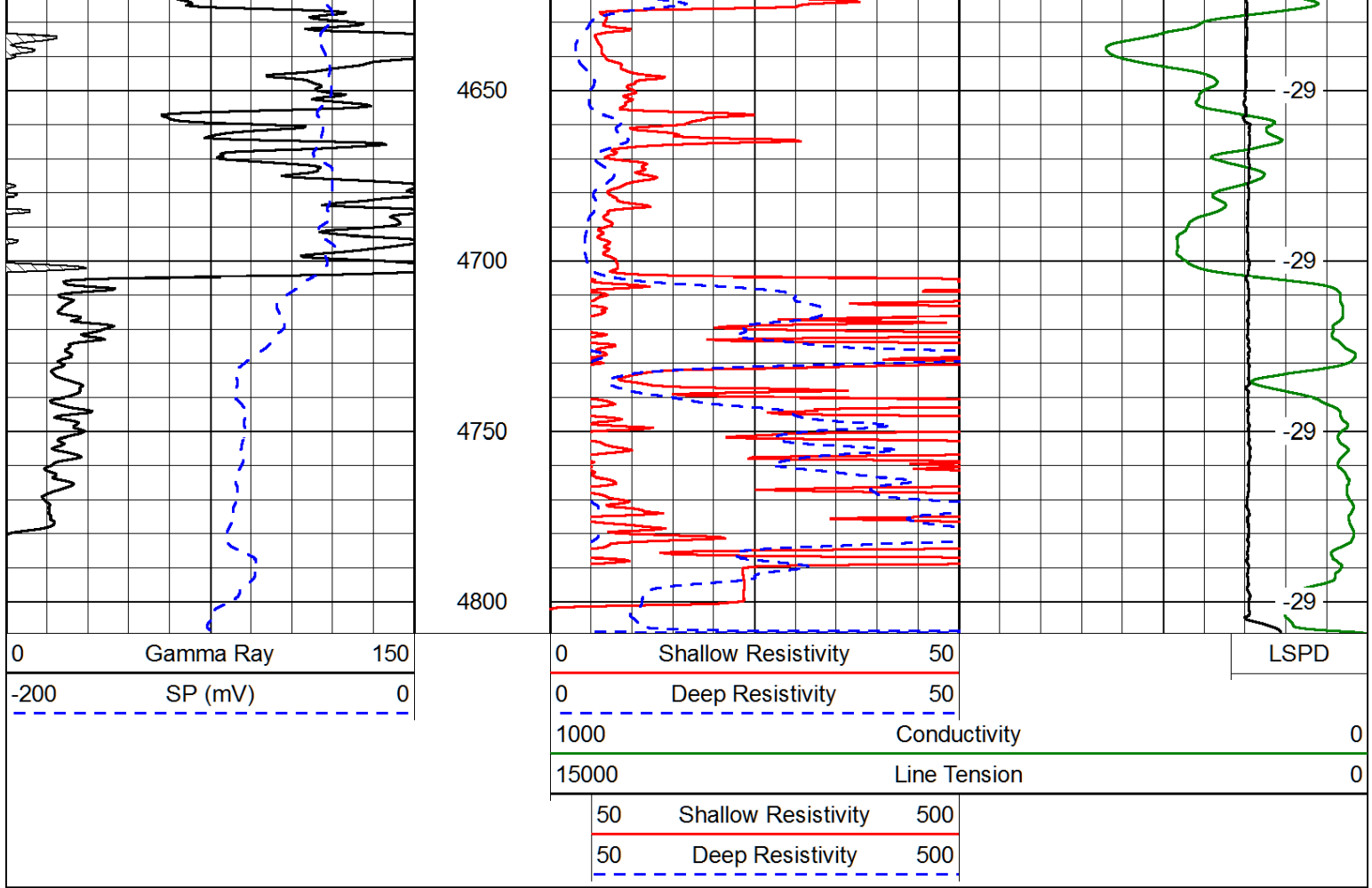




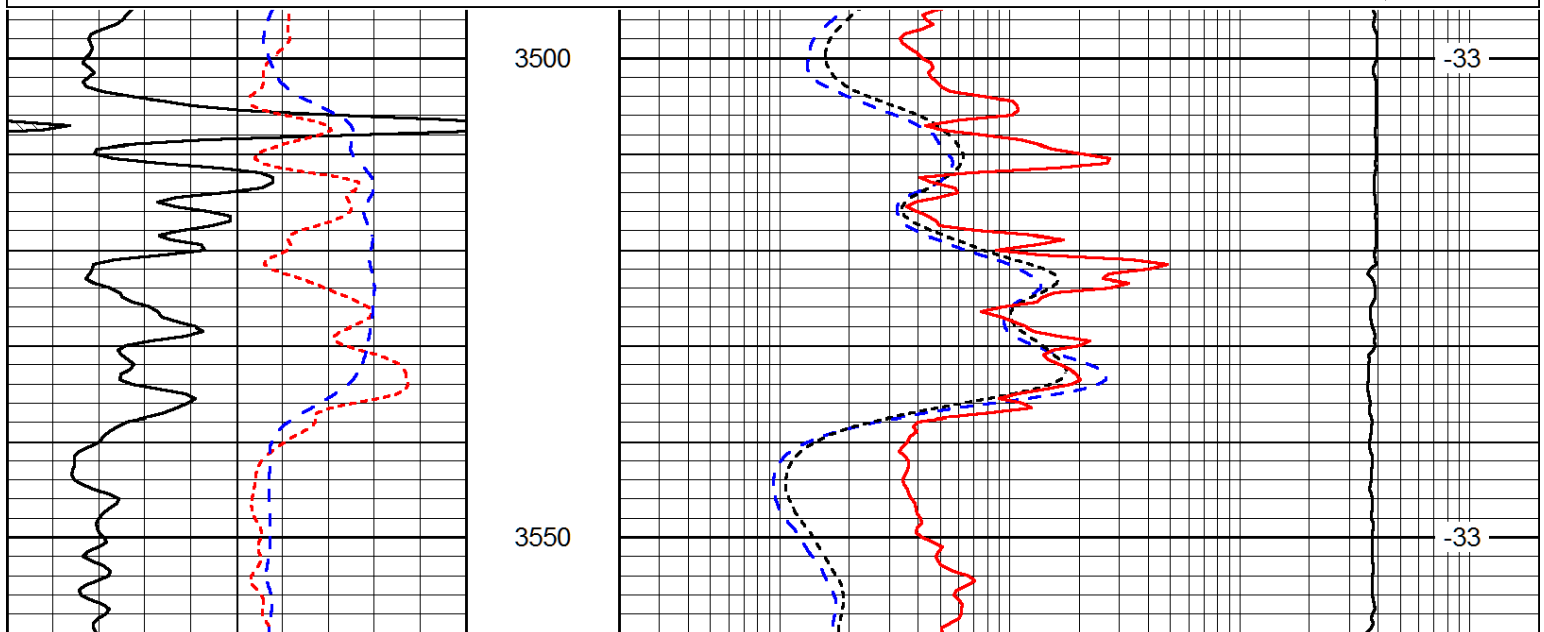
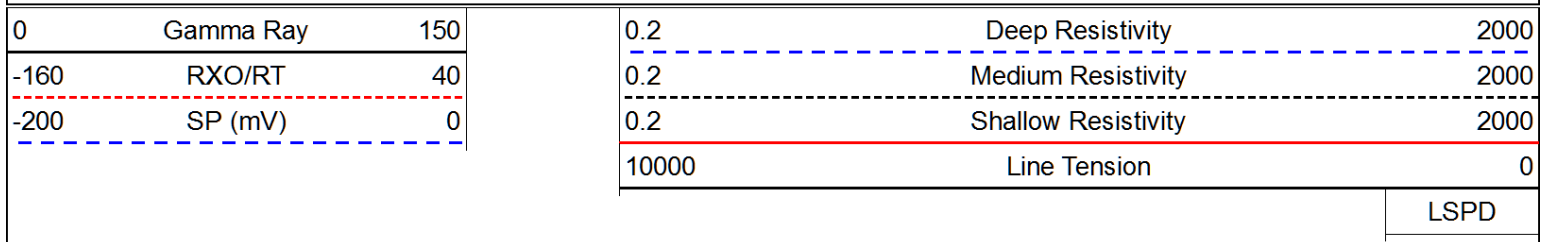


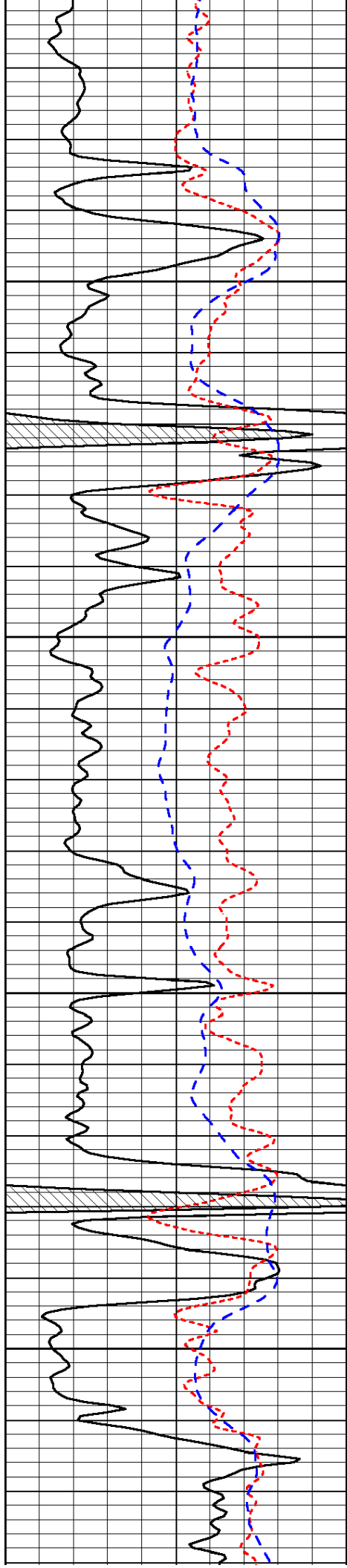






Database File: toto hd.db
 Dataset Pathname: dil/totmain
 Presentation Format: dil
 Dataset Creation: Sun Jun 22 05:43:30 2014
 Charted by: Depth in Feet scaled 1:240



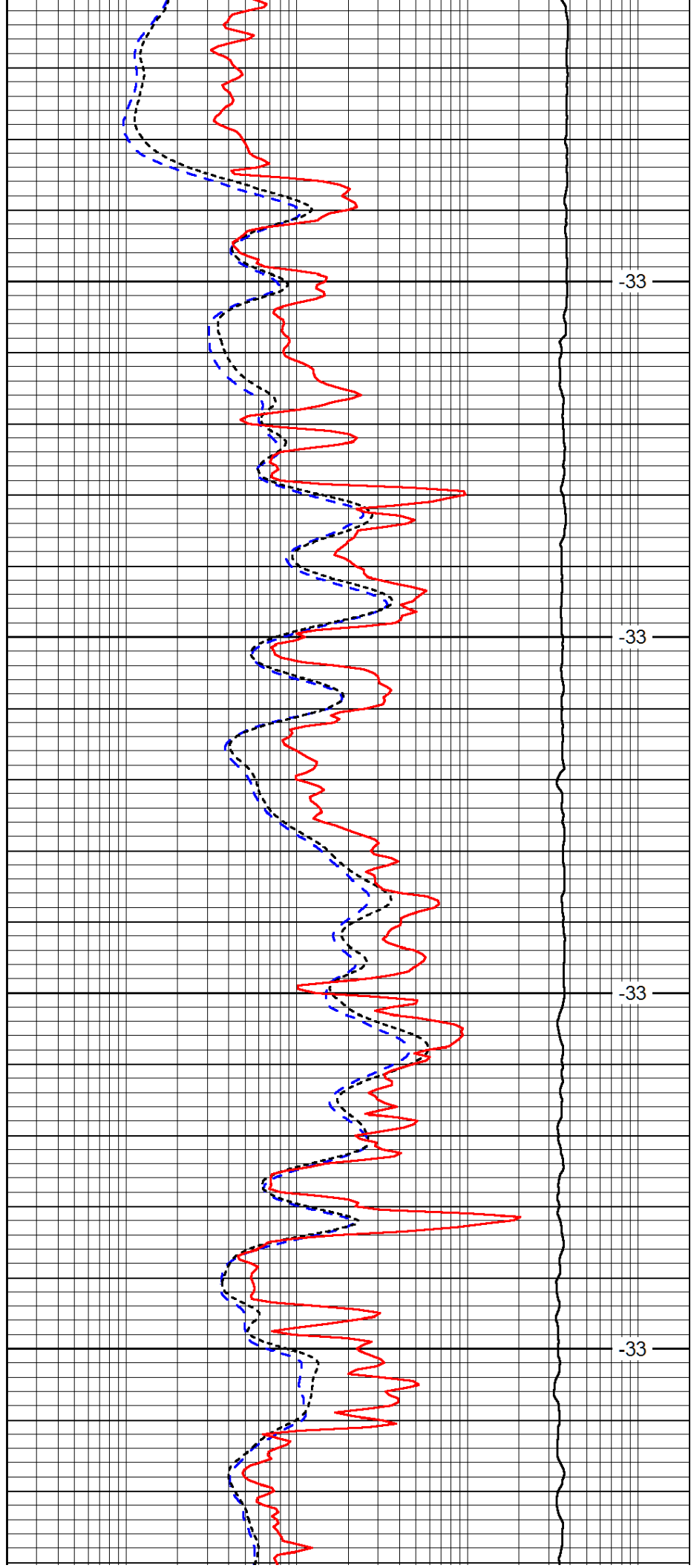


3600

3650

3700

3750

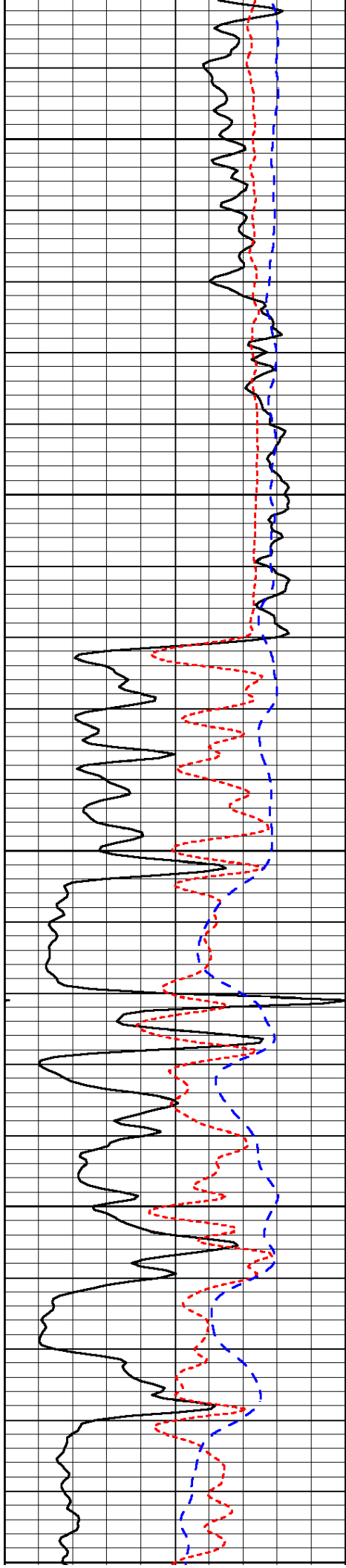


-33

-33

-33

-33



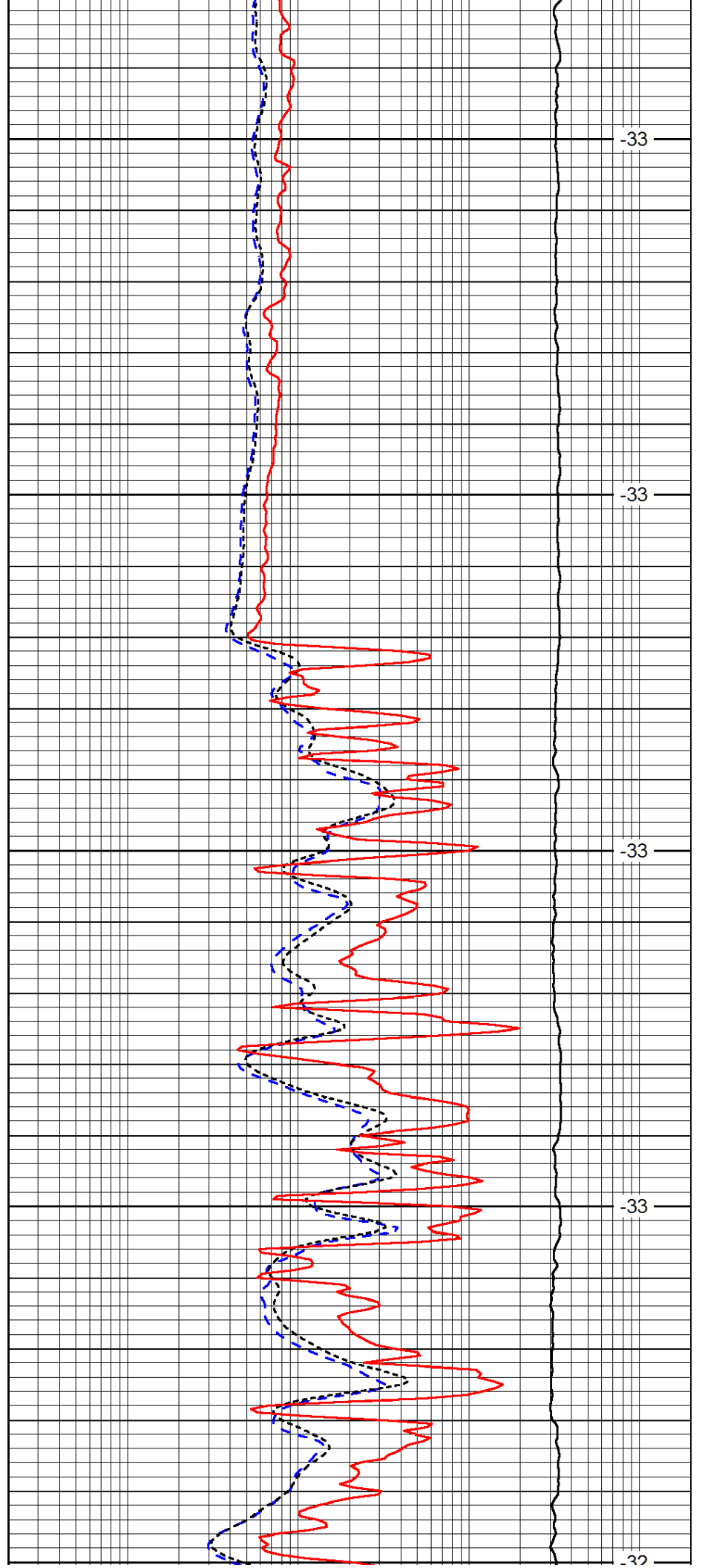
3800

3850

3900

3950

4000



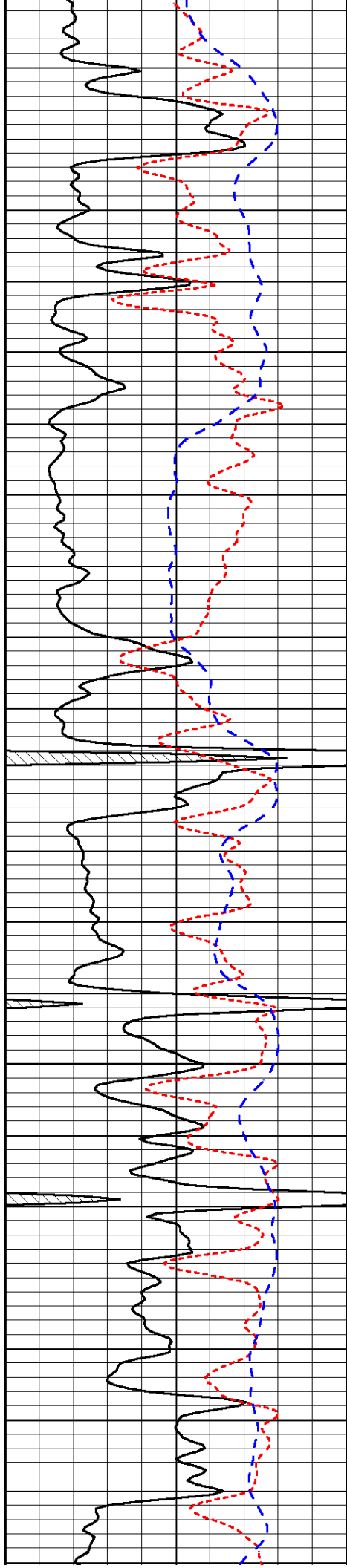
-33

-33

-33

-33

-32

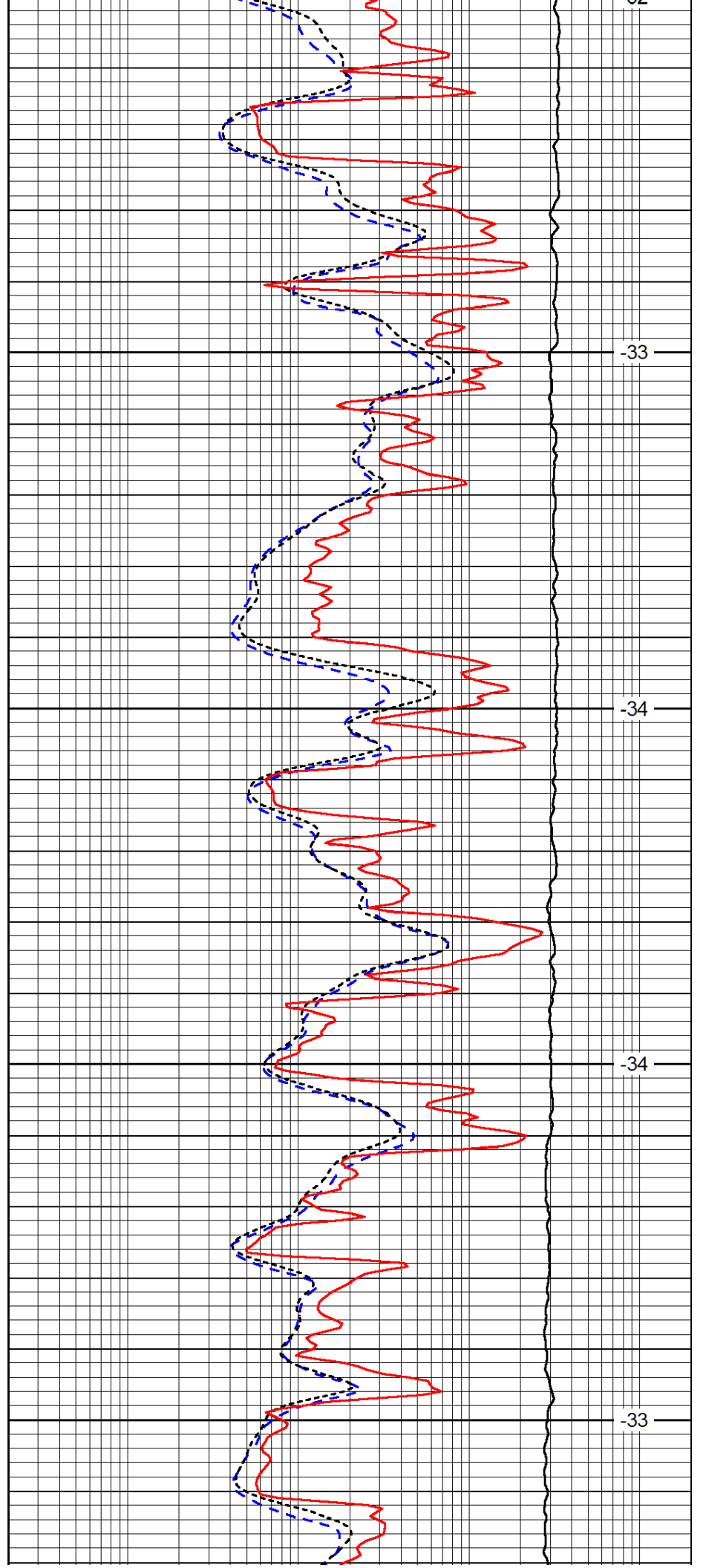


4050

4100

4150

4200

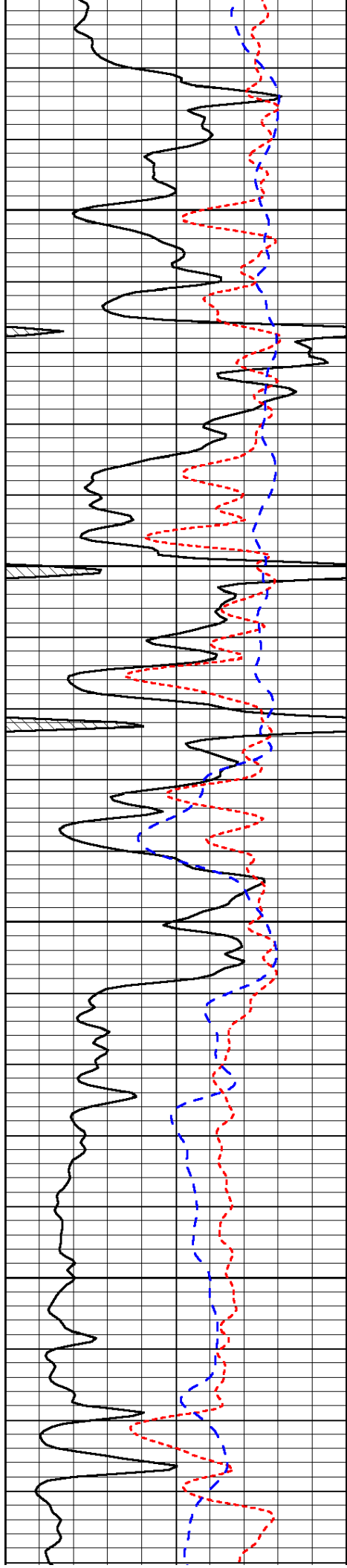


-33

-34

-34

-33

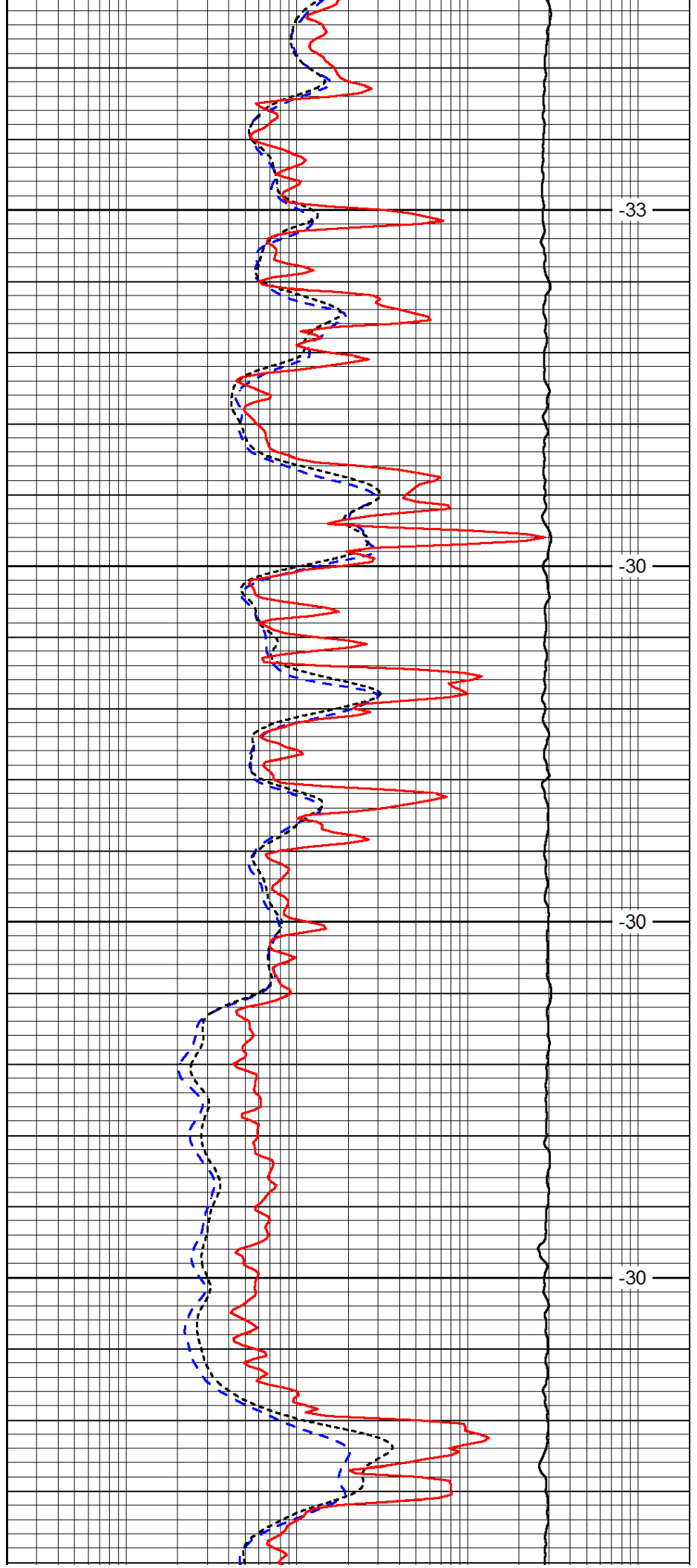


4250

4300

4350

4400

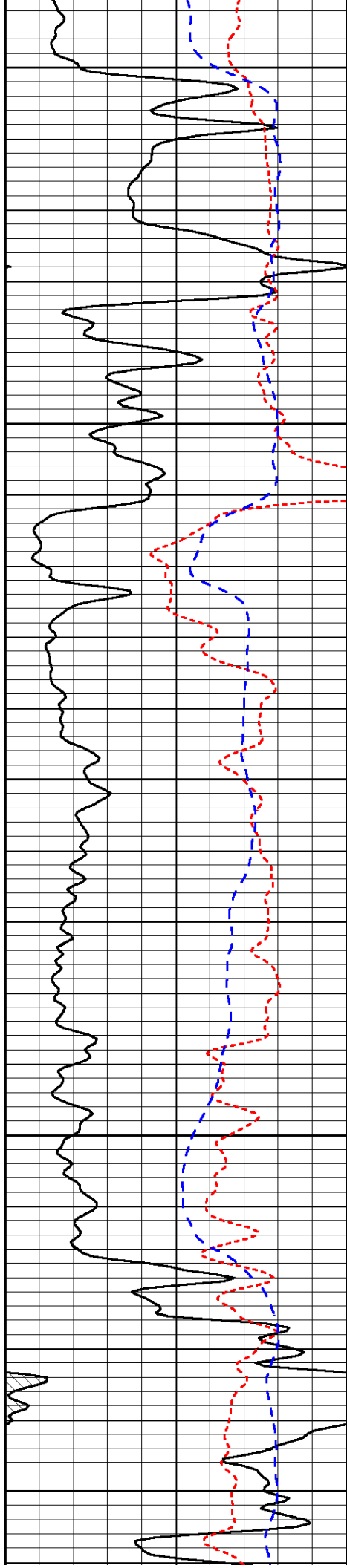


-33

-30

-30

-30



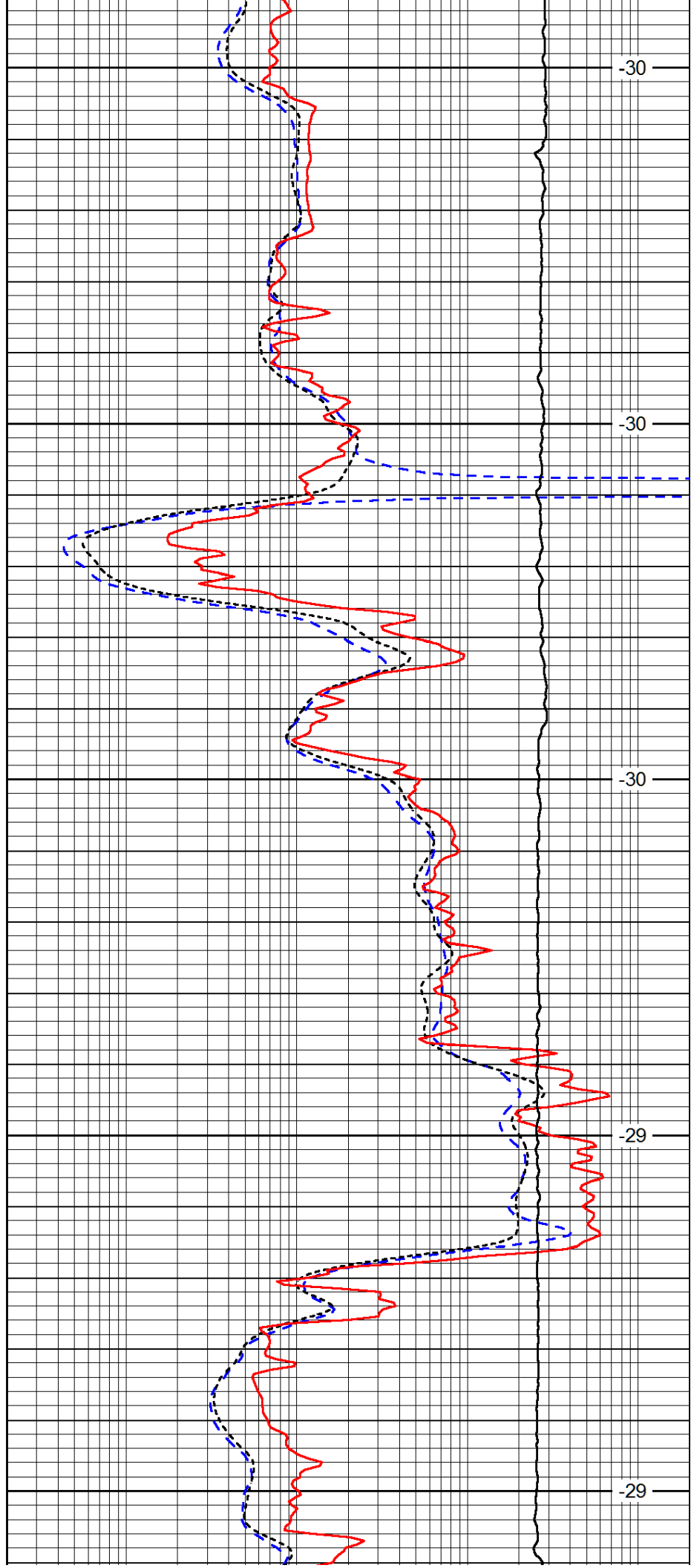
4450

4500

4550

4600

4650



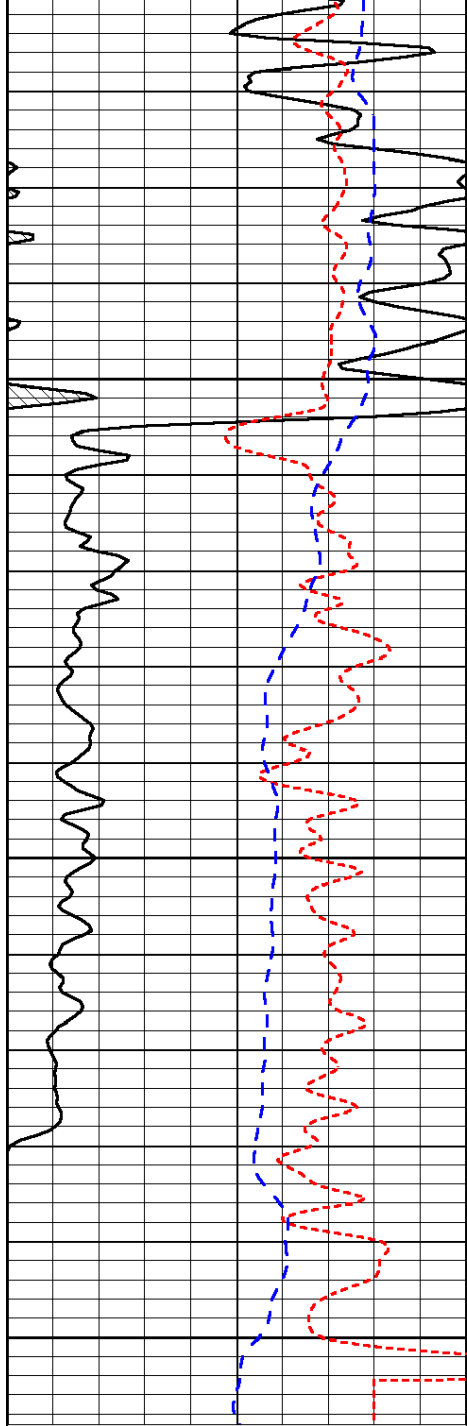
-30

-30

-30

-29

-29

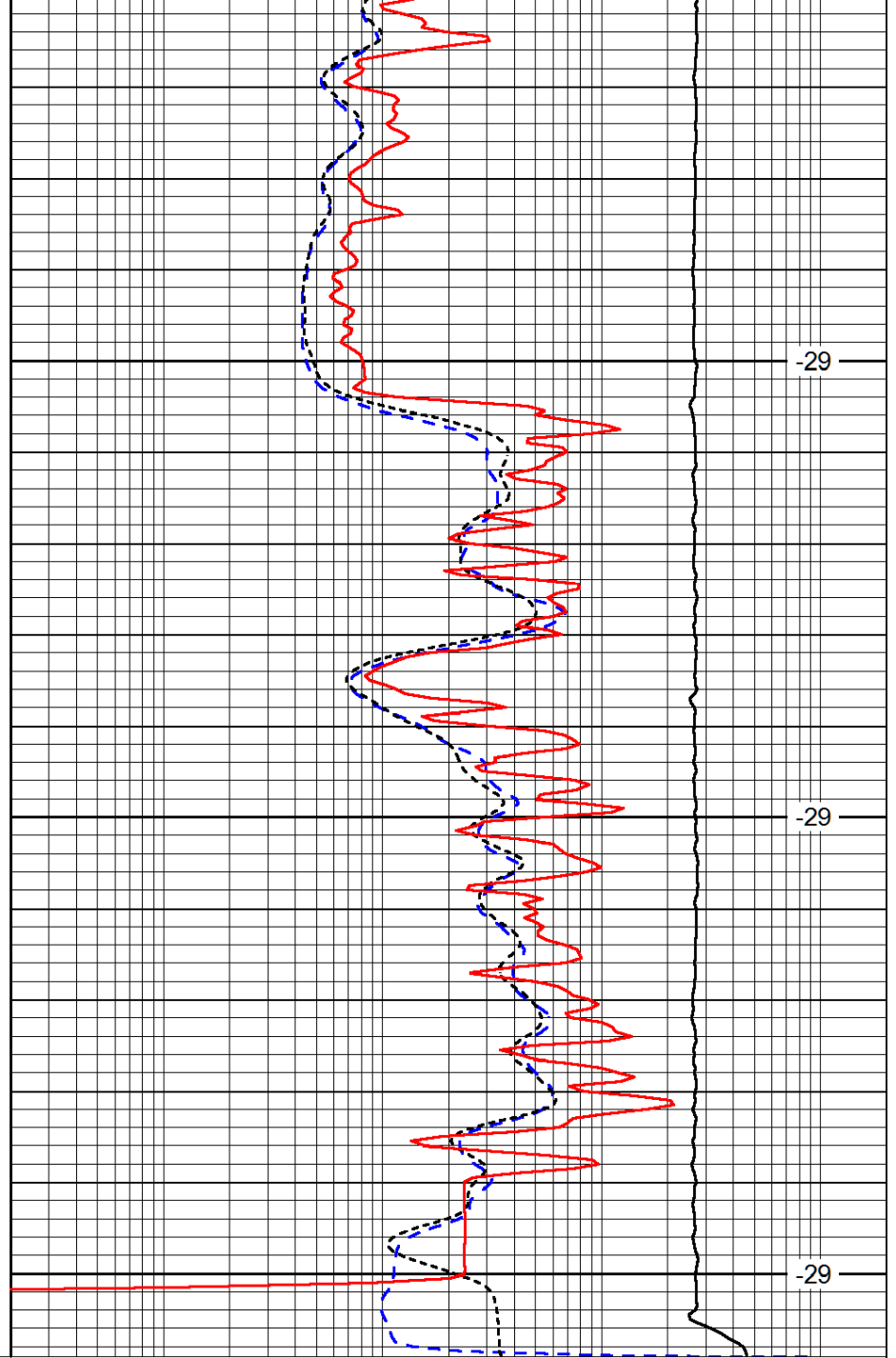


4700

4750

4800

0	Gamma Ray	150
-160	RXO/RT	40
-200	SP (mV)	0



-29

-29

-29

0.2	Deep Resistivity	2000
0.2	Medium Resistivity	2000
0.2	Shallow Resistivity	2000
10000	Line Tension	0

LSPD