



MIDWEST SURVEYS
 LOGGING - PERFORATING - CONSULTING SERVICES
 P.O. Box 66, Osawatomie, KS 66064
 913 / 755 - 2128

GAMMA RAY / NEUTRON / CCL

File No.

Company **RJ Enterprises**

Well **Sobba No.- 20**

Field **Bush City Shoestring**

County **Anderson** State **Kansas**

Location **4348 FSL & 4734 FEL**

Sec. **18** Twp. **21S** Rge. **20E**

Permit/Datum **GL** Elevation **NA**

Log Measured From **GL** Other Services **Perforate**

Drilling Measured From **GL** KB NA
DF NA
GL NA

Date **02-19-2013**

Run Number **One**

Depth Driller **828.0**

Depth Logger **822.0**

Bottom Logged Interval **821.0**

Top Log Interval **20.0**

Fluid Level **Full**

Type Fluid **Water**

Density / Viscosity **NA**

Salinity - PPM Cl **NA**

Max Recorded Temp **NA**

Estimated Cement Top **0.0**

Equipment No. **104** Location **Oswatomie**

Recorded By **Gary Windisch**

Witnessed By **Jason Kent**

BOREHOLE RECORD				CASING RECORD			
RUN	BIT	FROM	TO	SIZE	WGT.	FROM	TO
One	9.875"	0.0	20.0	7.00"	17.0#	0.0	20.0
Two	5.625"	20.0	828.0	2.875"	6.5#	0.0	822.3

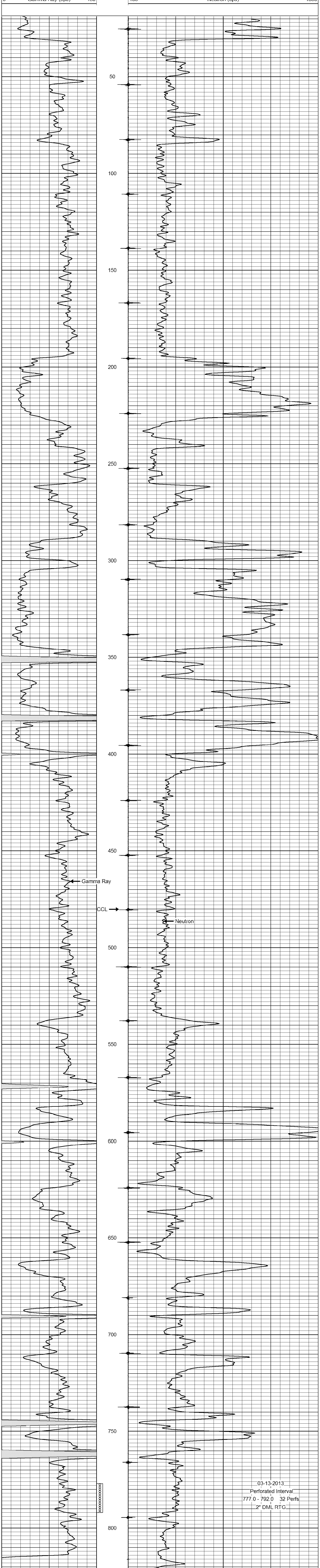
<<< Fold Here >>>

All interpretations are opinions based on inferences from electrical or other measurements and we cannot and do not guarantee the accuracy or correctness of any interpretation, and we shall not, except in the case of gross or willful negligence on our part, be liable or responsible for any loss, costs, damages, or expenses incurred or sustained by anyone resulting from any interpretation made by any of our officers, agents or employees. These interpretations are also subject to our general terms and conditions set out in our current Price Schedule.

Comments

Drilling Contractor :
RJ Enterprises

Database File: **sobba20.db**
 Dataset Pathname: **pass1**
 Presentation Format: **gr-n-ccl**
 Dataset Creation: **Tue Feb 19 13:53:02 2013 by Log SCH 111116**
 Charted by: **Depth in Feet scaled 1:240**



03-13-2013
 Perforated Interval
 777.0 - 792.0 32 Perfs
 2" DML RTG.