



**COMPLETION
& PRODUCTION
SERVICES CO.**

**MICRO
LOG**

Company DOWNING - NELSON OIL CO. INC.
Well TAMMY "B" #1
Field WAKEENEY
County TREGO
State KANSAS

Company DOWNING - NELSON OIL COMPANY, INC.
Well TAMMY "B" #1
Field WAKEENEY
County TREGO State KANSAS

Location: API # : 15-195-22857-0000
575' FSL & 830' FEL
NW - SE - SW - SW
SEC 26 TWP 11S RGE 23W
Permanent Datum GROUND LEVEL Elevation 2380
Log Measured From KELLY BUSHING 8' A.G.L.
Drilling Measured From KELLY BUSHING
Other Services
CDL/CNL
DIL/SONIC
Elevation
K.B. 2388
D.F. 2386
G.L. 2380

Date	3/31/13
Run Number	TWO
Depth Driller	4150
Depth Logger	4150
Bottom Logged Interval	4128
Top Log Interval	3300
Casing Driller	8 5/8"@220'
Casing Logger	220
Bit Size	7 7/8"
Type Fluid in Hole	CHEMICAL MUD
Density / Viscosity	8.9/56
pH / Fluid Loss	10.5/8.0
Source of Sample	FLOWLINE
Rim @ Meas. Temp	.950@80F
Rmf @ Meas. Temp	.713@80F
Rmc @ Meas. Temp	1.14@80F
Source of Rmf / Rmc	MEASUREMENT
Rim @ BHT	.650@117F
Time Circulation Stopped	4 HOURS
Time Logger on Bottom	5:30 P.M.
Maximum Recorded Temperature	117F
Equipment Number	4854
Location	HAYS, KANSAS
Recorded By	JEFF LUEBBERS
Witnessed By	RON NELSON

<<< Fold Here >>>

All interpretations are opinions based on inferences from electrical or other measurements and we cannot and do not guarantee the accuracy or correctness of any interpretation, and we shall not, except in the case of gross or willful negligence on our part, be liable or responsible for any loss, costs, damages, or expenses incurred or sustained by anyone resulting from any interpretation made by any of our officers, agents or employees. These interpretations are also subject to our general terms and conditions set out in our current Price Schedule.

Comments

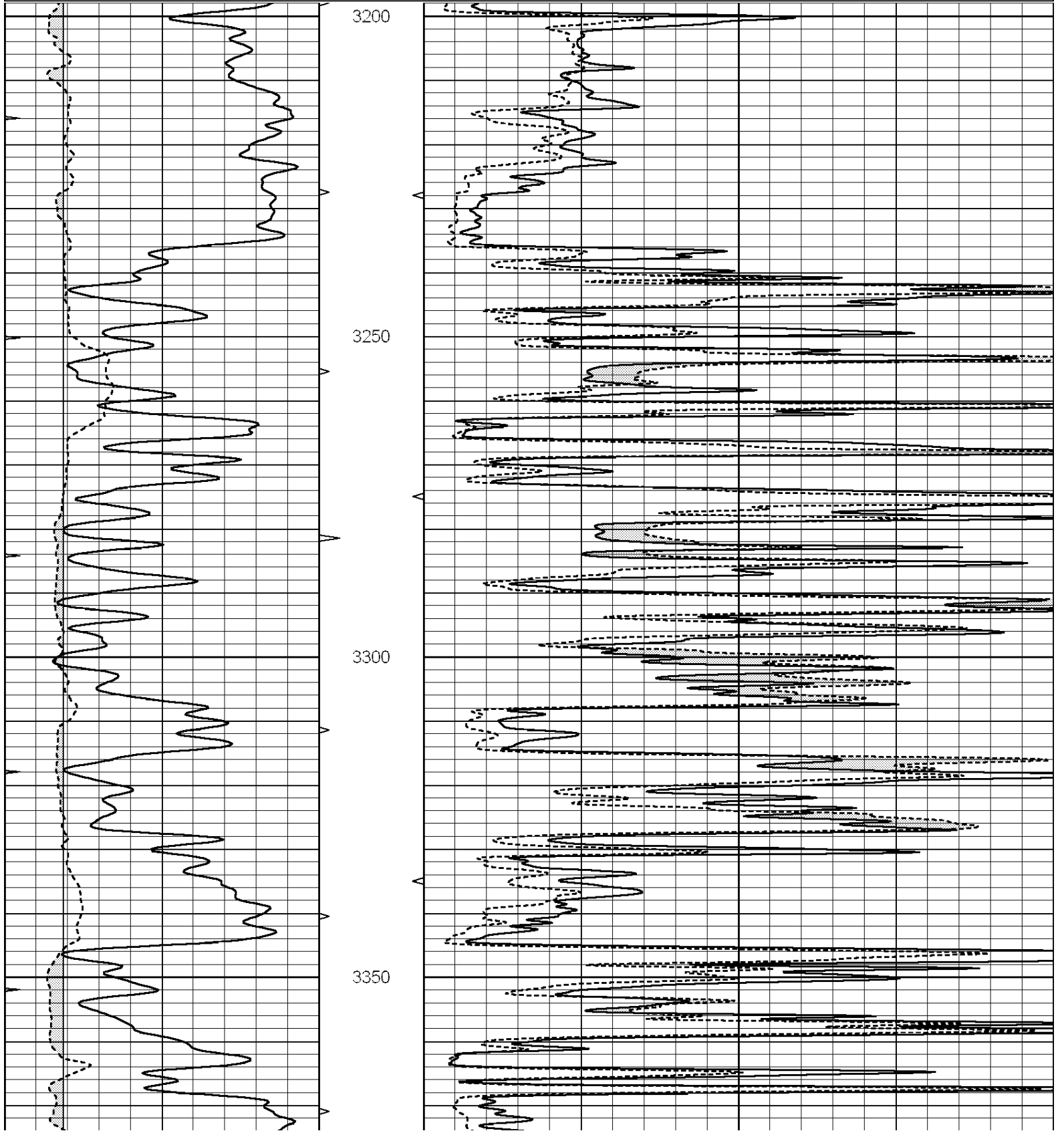
THANK YOU FOR USING "NABORS" HAYS, KANSAS (785) 628-6395
DIRECTIONS
WAKEENEY, KS. (N. EDGE) TO HIXON RD., "H RD.", 1E. TO "270TH RD.", 2N., E. INTO

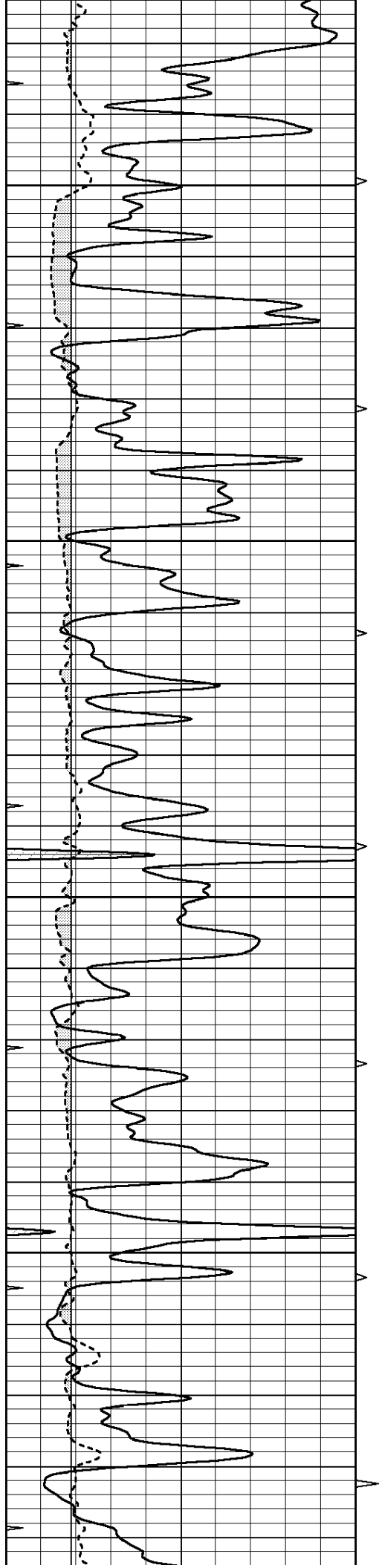


MAIN SECTION

Database File: 010733ddn.db
 Dataset Pathname: pass7.10
 Presentation Format: micro
 Dataset Creation: Sun Mar 31 20:24:54 2013
 Charted by: Depth in Feet scaled 1:240

0	GAMMA RAY (GAPI)	150	ABHV	0	MEL1.5 (Ohm-m)	40
6	CALIPER (in)	16	10 (ft3)	0	MEL2.0 (Ohm-m)	40
0	MINMK	20	TBHV			
			0 (ft3)	10		



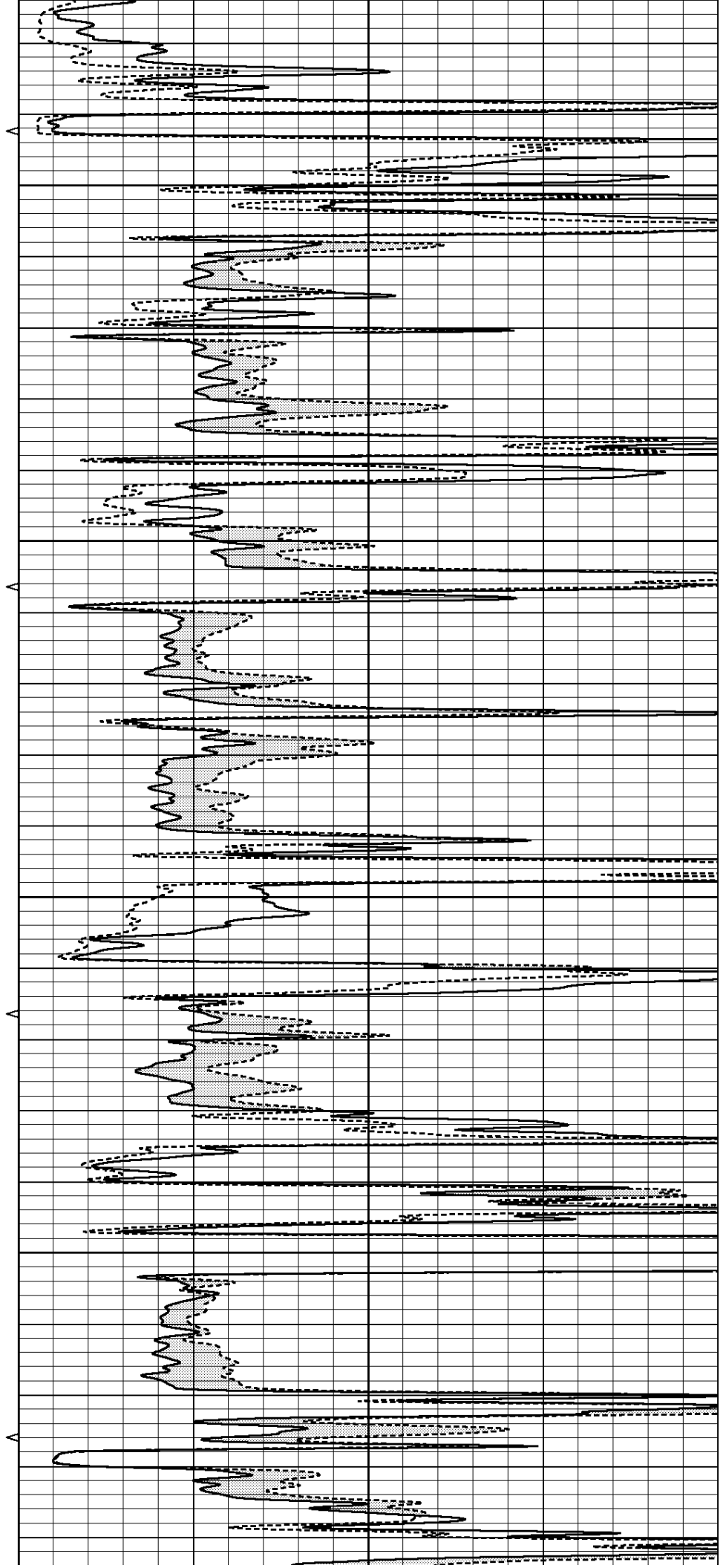


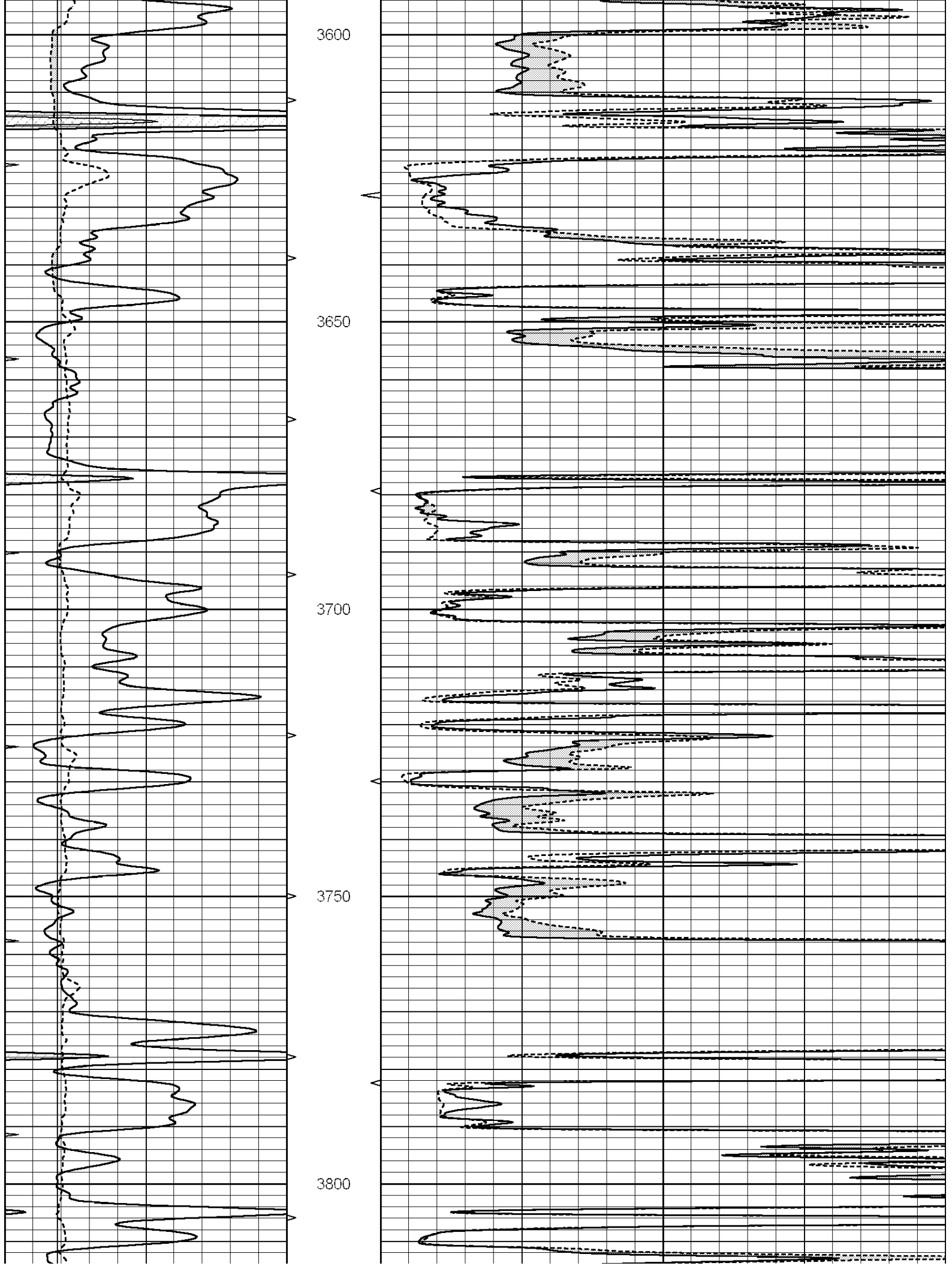
3400

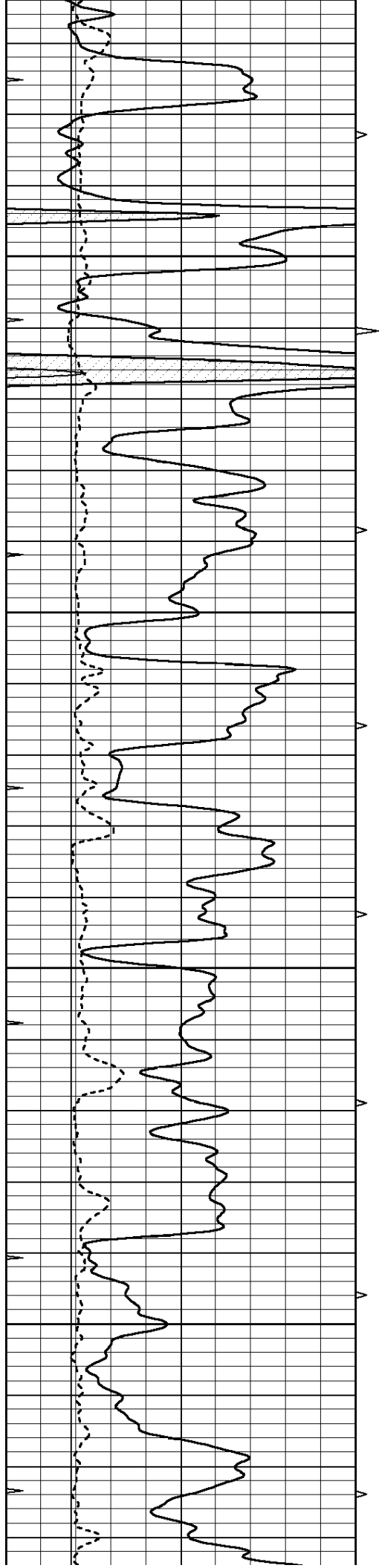
3450

3500

3550





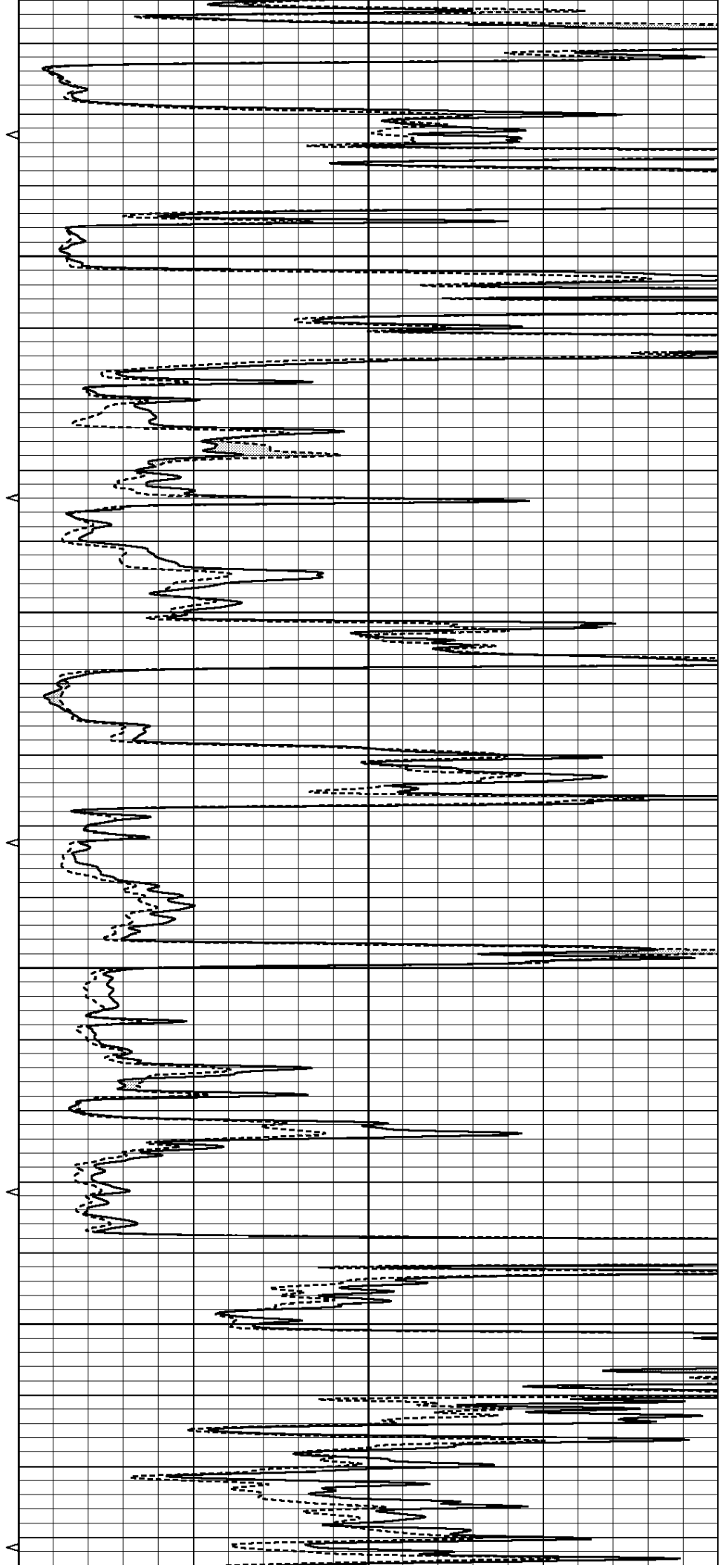


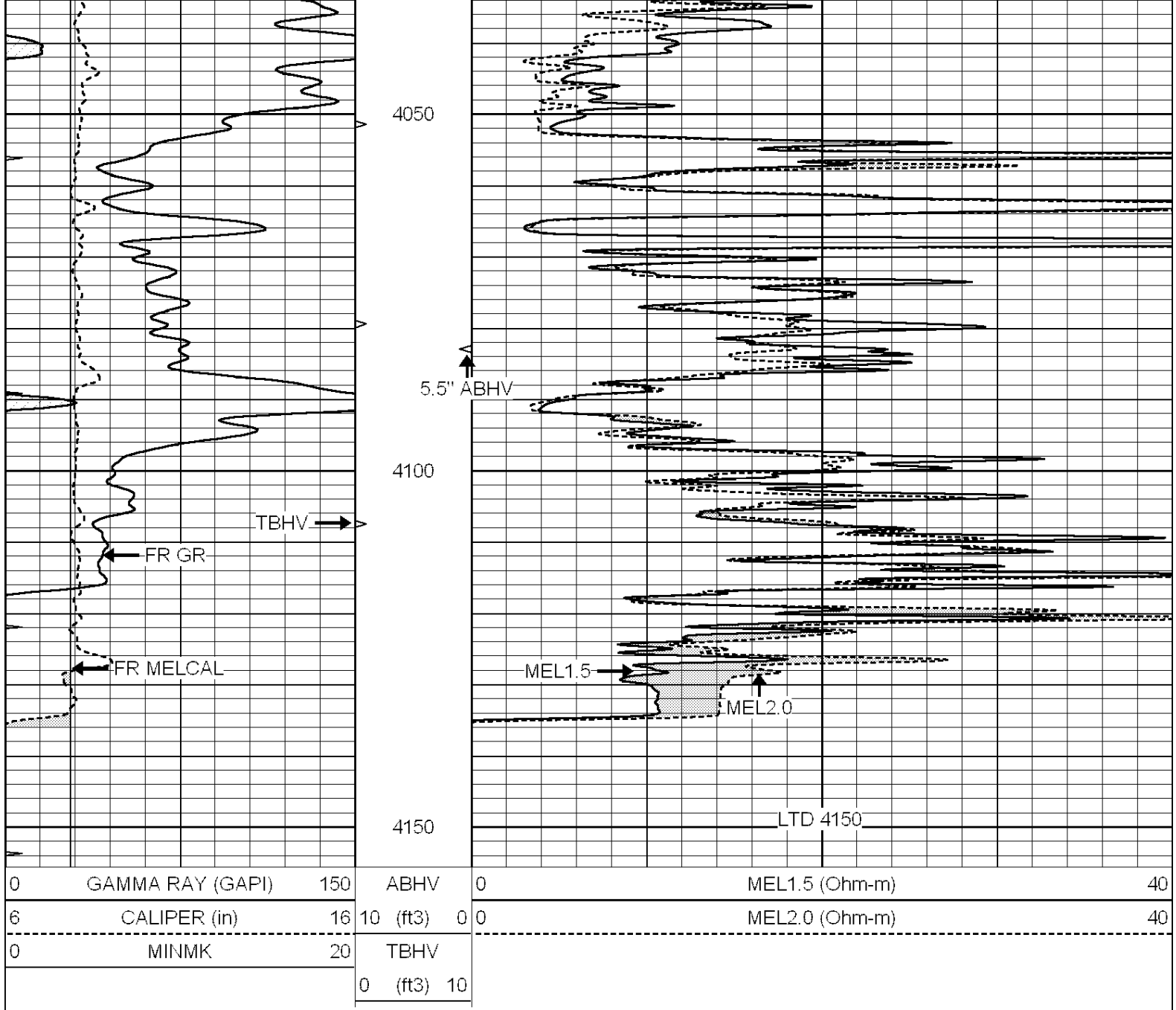
3850

3900

3950

4000

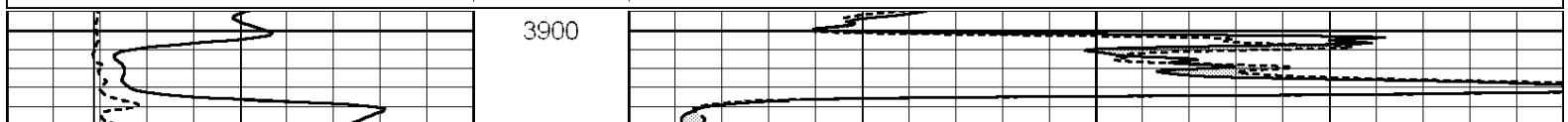


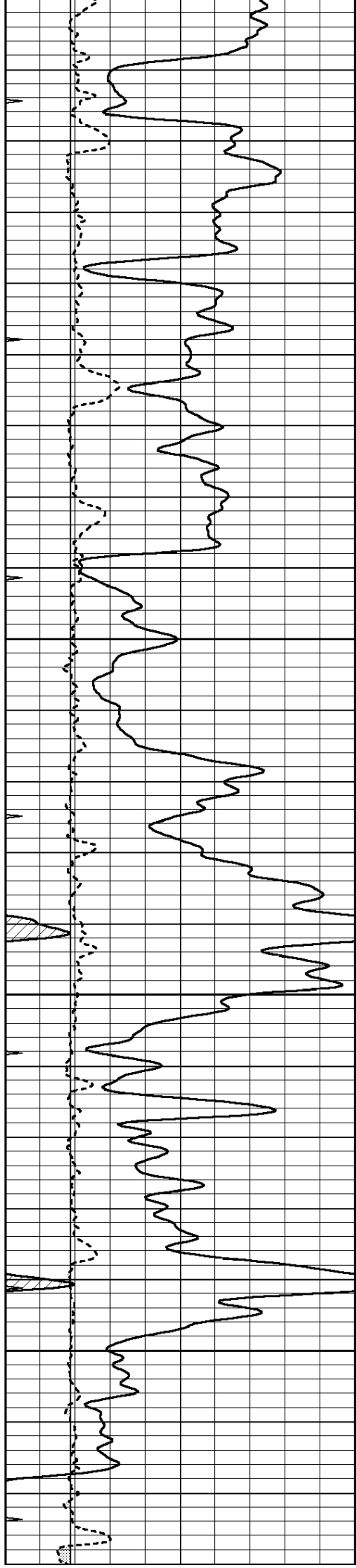


REPEAT SECTION

Database File: 010733ddn.db
 Dataset Pathname: pass6.9
 Presentation Format: micro
 Dataset Creation: Sun Mar 31 20:11:42 2013
 Charted by: Depth in Feet scaled 1:240

0	GAMMA RAY (GAPI)	150	ABHV	0	MEL1.5 (Ohm-m)	40
6	CALIPER (in)	16	10 (ft3)	0 0	MEL2.0 (Ohm-m)	40
0	MINMK	20	TBHV			
			0 (ft3)	10		



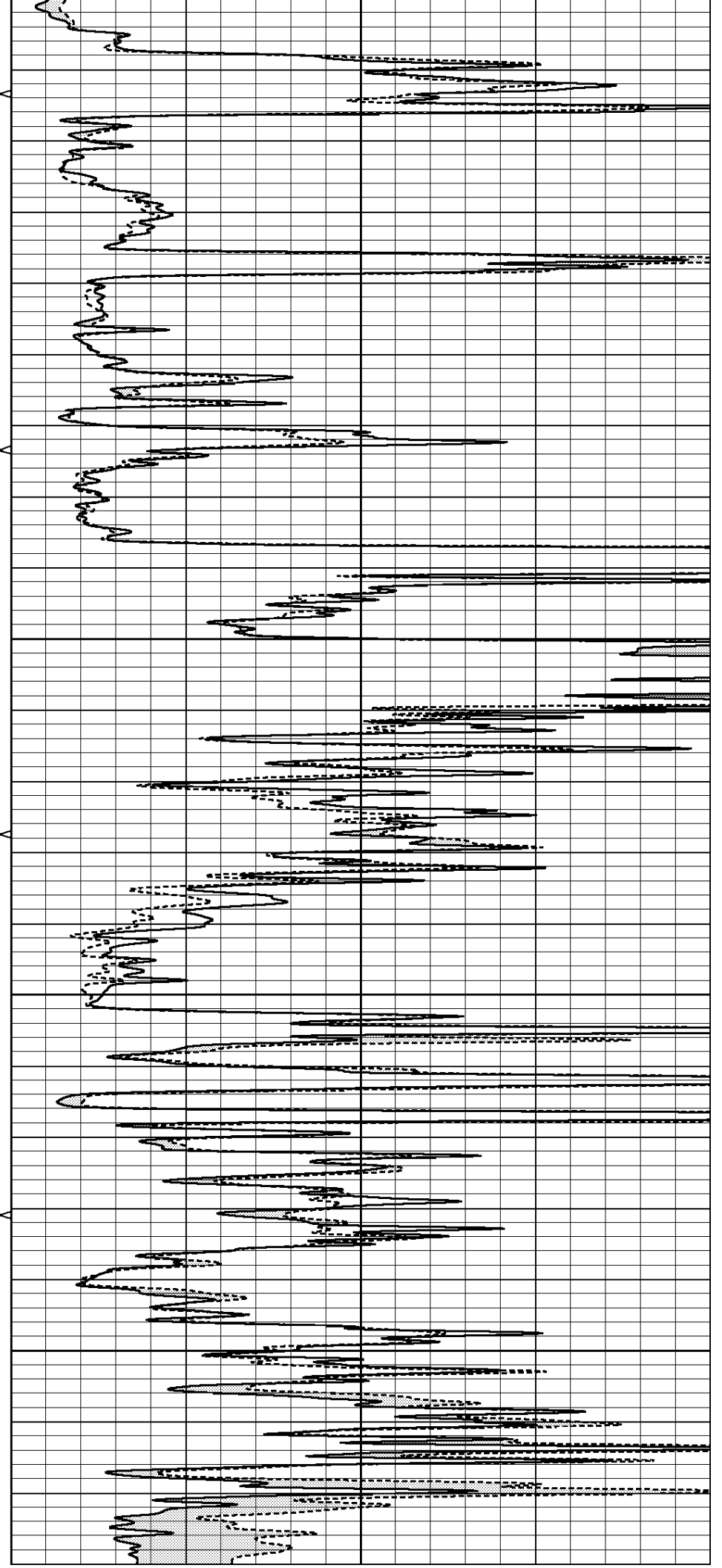


3950

4000

4050

4100



			4150					
0	GAMMA RAY (GAPI)	150	ABHV	0	MEL1.5 (Ohm-m)	40		
6	CALIPER (in)	16	10 (ft3)	0	MEL2.0 (Ohm-m)	40		
0	MINMK	20	TBHV					
			0 (ft3)	10				

Calibration Report

Database File: 010733ddn.db
 Dataset Pathname: pass7.10
 Dataset Creation: Sun Mar 31 20:24:54 2013

MICRO Calibration Report

Serial Number: 2
 Tool Model: PROBE
 Performed: Sun Mar 31 19:20:55 2013

Caliper Calibration: Gain=7.143 Offset=6.000

References	Low Cal	High Cal
Readings	8.000	16.000
	0.280	1.400

1.5" Calibration: Gain=48.000 Offset=-2.500

References	Low Cal	High Cal
Readings	0.000	20.000
	0.015	0.458

2" Calibration: Gain=52.000 Offset=-1.000

References	Low Cal	High Cal
Readings	0.000	20.000
	0.003	0.384

Gamma Ray Calibration Report

Serial Number: GR3
 Tool Model: OPEN
 Performed: Sun Mar 31 19:26:02 2013

Calibrator Value: 200.0 GAPI

Background Reading:	3.0	cps
Calibrator Reading:	186.0	cps

Sensitivity: 1.2000 GAPI/cps