



**COMPLETION
& PRODUCTION
SERVICES CO.**

**SONIC
LOG**

Company DOWNING - NELSON OIL CO. INC.
Well TAMMY "B" #1
Field WAKEENEY
County TREGO
State KANSAS

Company DOWNING - NELSON OIL COMPANY, INC.
Well TAMMY "B" #1
Field WAKEENEY
County TREGO State KANSAS

Location: API # : 15-195-22857-0000
575' FSL & 830' FEL
NW - SE - SW - SW
SEC 26 TWP 11S RGE 23W
Permanent Datum GROUND LEVEL Elevation 2380
Log Measured From KELLY BUSHING 8' A.G.L.
Drilling Measured From KELLY BUSHING
Other Services
CDL/CNL
DIL/MEL
Elevation
K.B. 2388
D.F. 2386
G.L. 2380

Date	3/31/13
Run Number	TWO
Depth Driller	4150
Depth Logger	4150
Bottom Logged Interval	4138
Top Log Interval	200
Casing Driller	8 5/8"@220'
Casing Logger	220
Bit Size	7 7/8"
Type Fluid in Hole	CHEMICAL MUD
Density / Viscosity	8.9/56
pH / Fluid Loss	10.5/8.0
Source of Sample	FLOWLINE
Rim @ Meas. Temp	.950@80F
Rmf @ Meas. Temp	.713@80F
Rmc @ Meas. Temp	1.14@80F
Source of Rmf / Rmc	MEASUREMENT
Rim @ BHT	.650@117F
Time Circulation Stopped	4 HOURS
Time Logger on Bottom	5:30 P.M.
Maximum Recorded Temperature	117F
Equipment Number	4854
Location	HAYS, KANSAS
Recorded By	JEFF LUEBBERS
Witnessed By	RON NELSON

<<< Fold Here >>>

All interpretations are opinions based on inferences from electrical or other measurements and we cannot and do not guarantee the accuracy or correctness of any interpretation, and we shall not, except in the case of gross or willful negligence on our part, be liable or responsible for any loss, costs, damages, or expenses incurred or sustained by anyone resulting from any interpretation made by any of our officers, agents or employees. These interpretations are also subject to our general terms and conditions set out in our current Price Schedule.

Comments

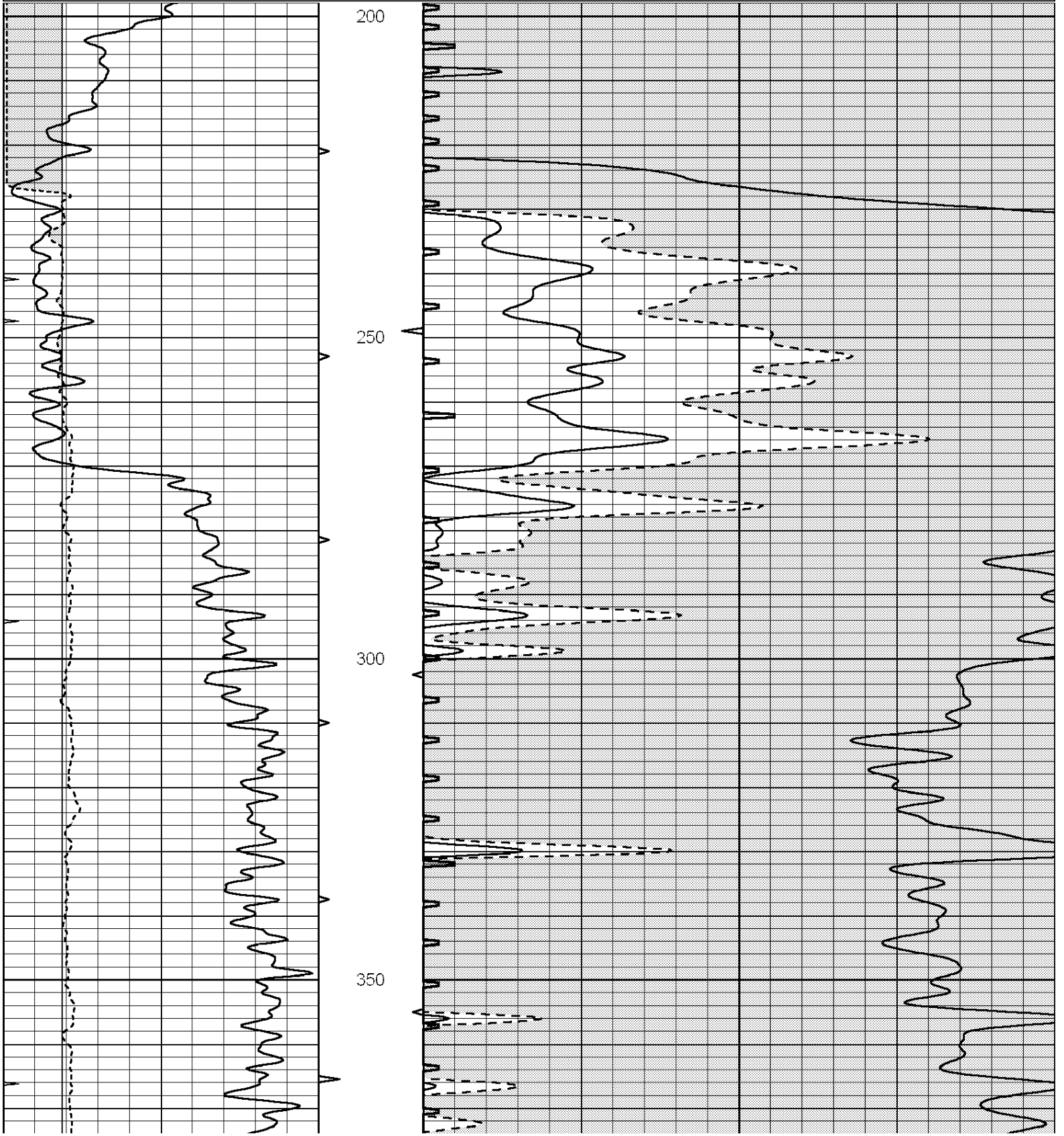
THANK YOU FOR USING "NABORS" HAYS, KANSAS (785) 628-6395
DIRECTIONS
WAKEENEY, KS. (N. EDGE) TO HIXON RD., "H RD.", 1E. TO "270TH RD.", 2N., E. INTO

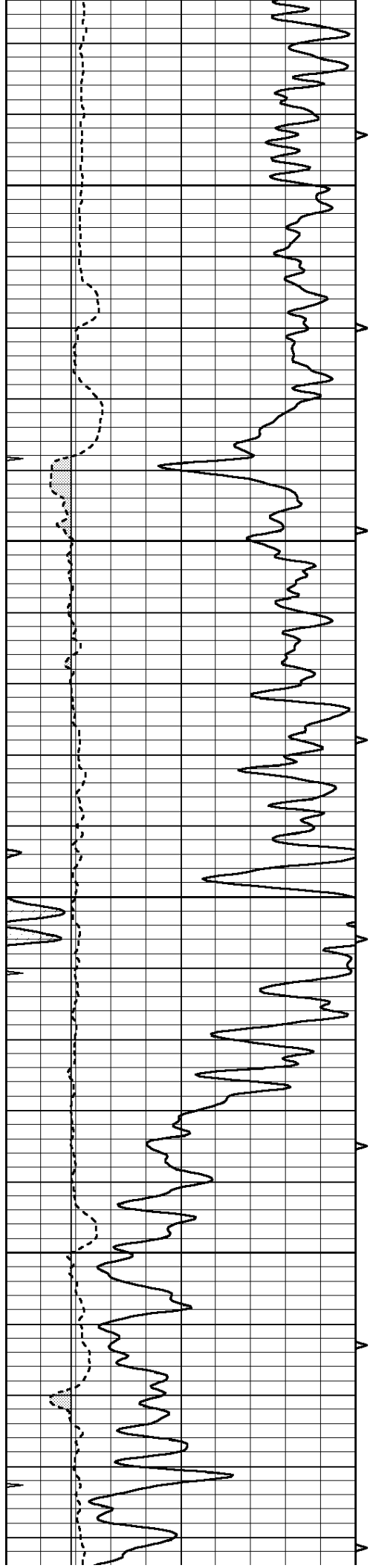


MAIN SECTION

Database File: 010733ddn.db
 Dataset Pathname: pass7.14
 Presentation Format: slt
 Dataset Creation: Sun Mar 31 21:05:39 2013
 Charted by: Depth in Feet scaled 1:240

0	GAMMA RAY (GAPI)	150	ABHV	140	DELTA TIME (usec/ft)	40	
6	CALIPER (in)	16	10 (ft3)	0	30	SONIC POROSITY (pu)	-10
0	MINMK	20	TBHV	0	ITT (msec)	20	
			0 (ft3)	10			



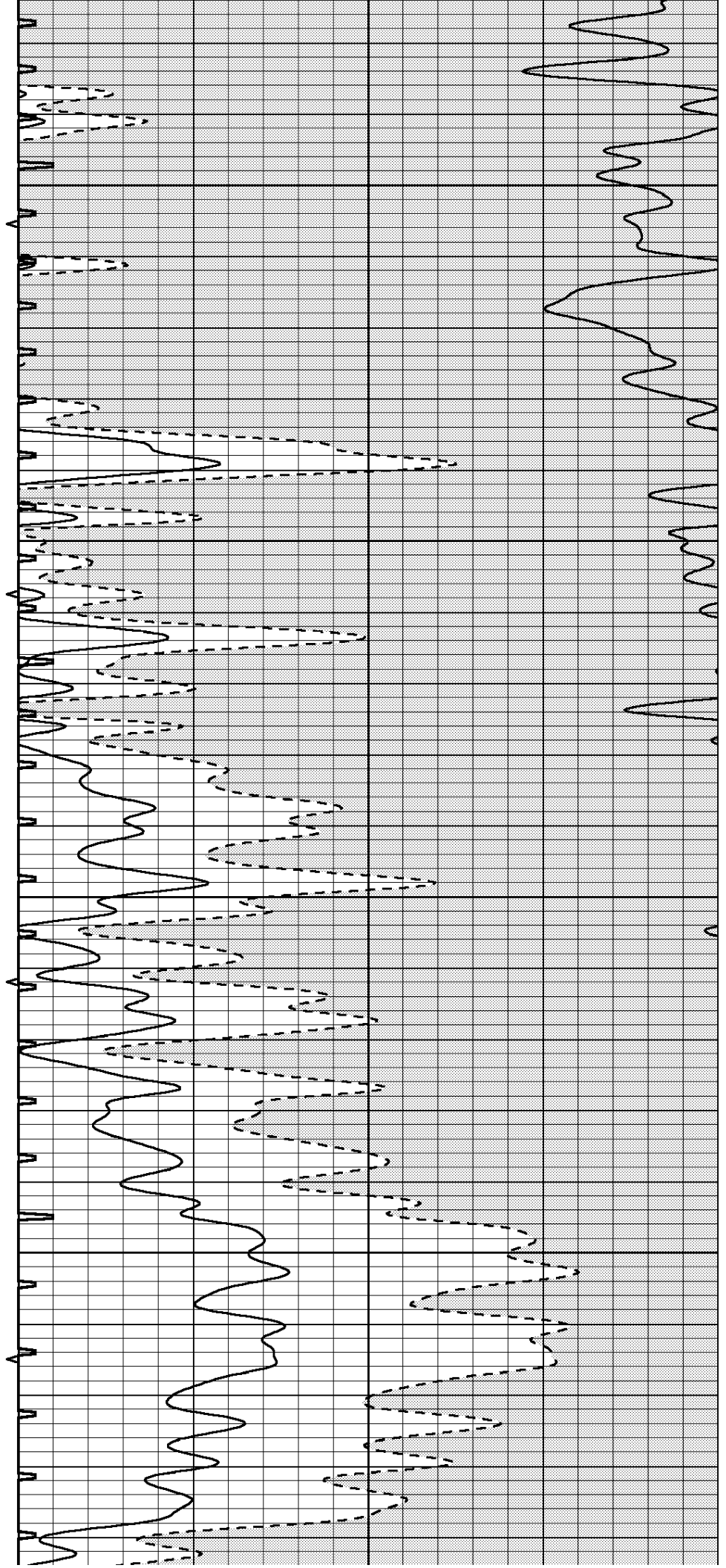


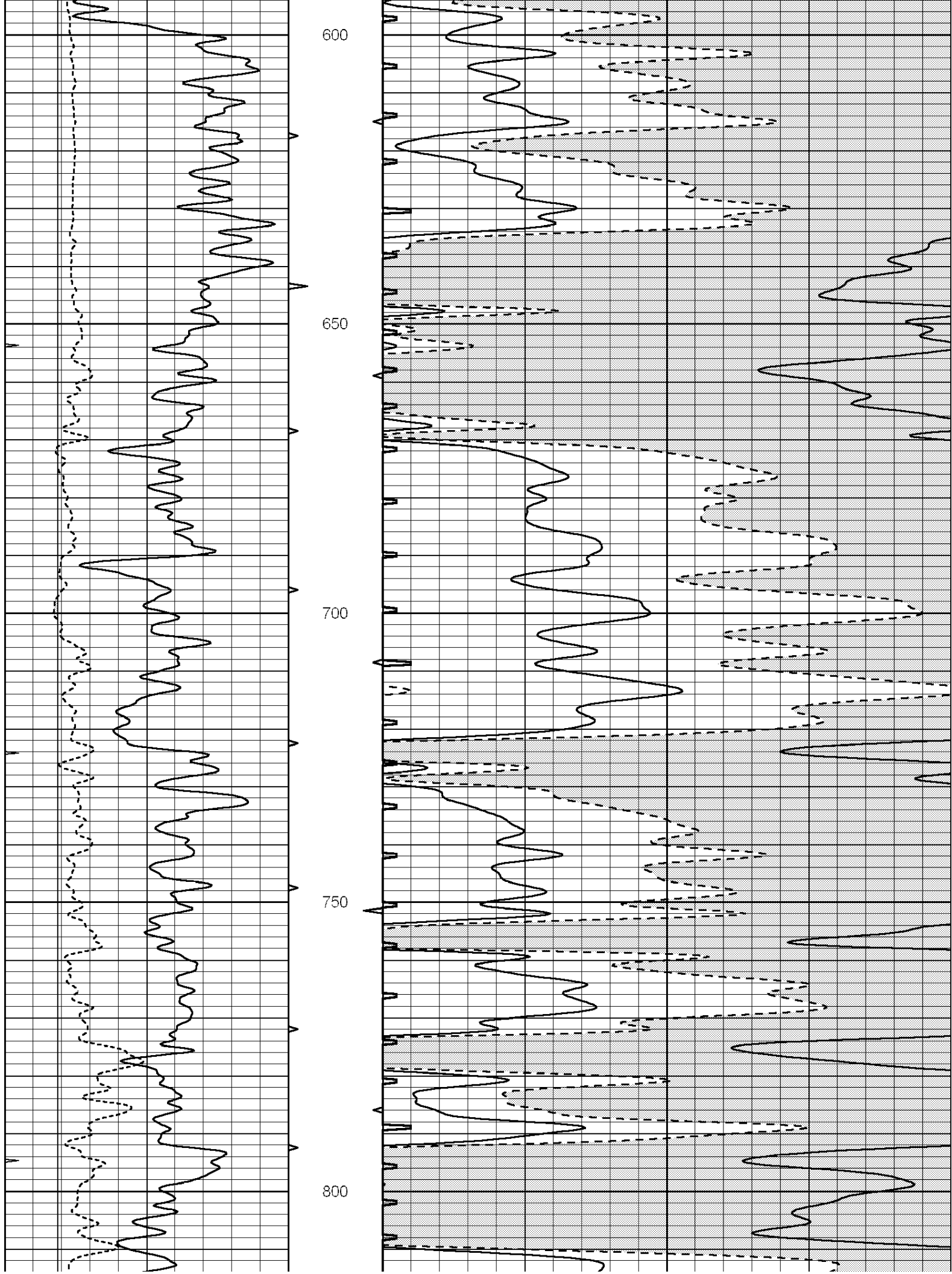
400

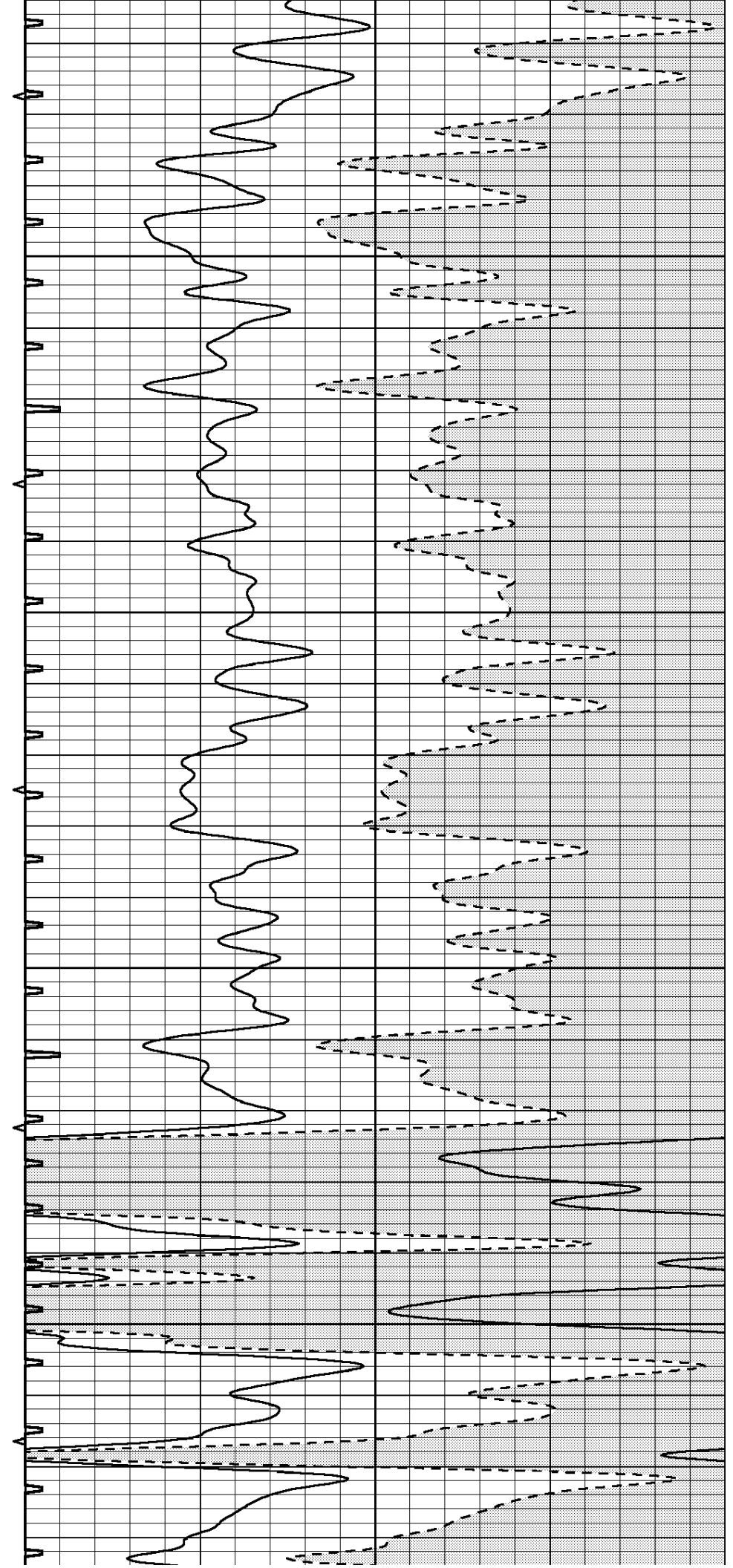
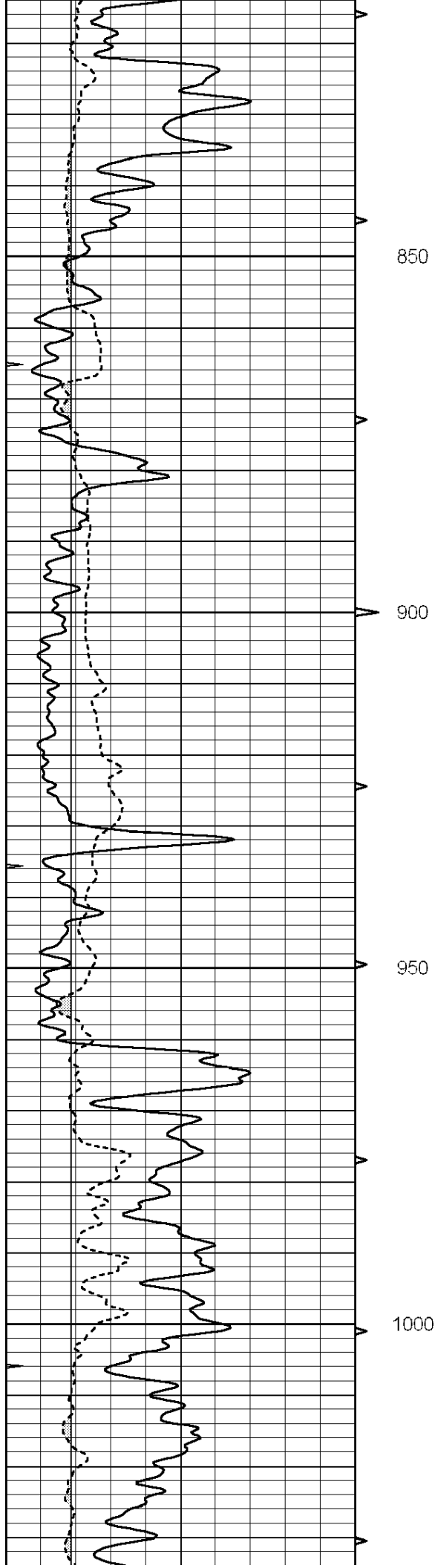
450

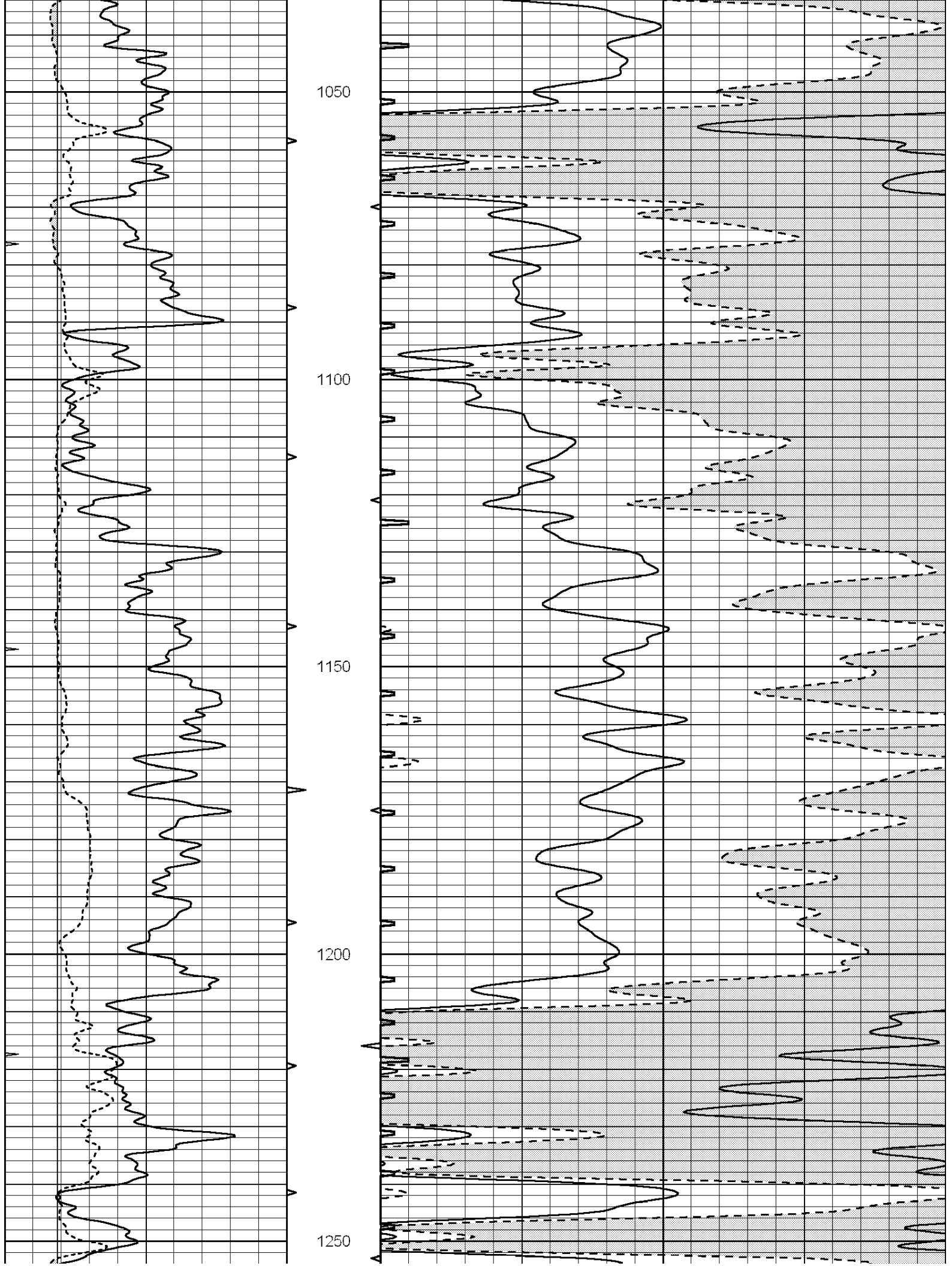
500

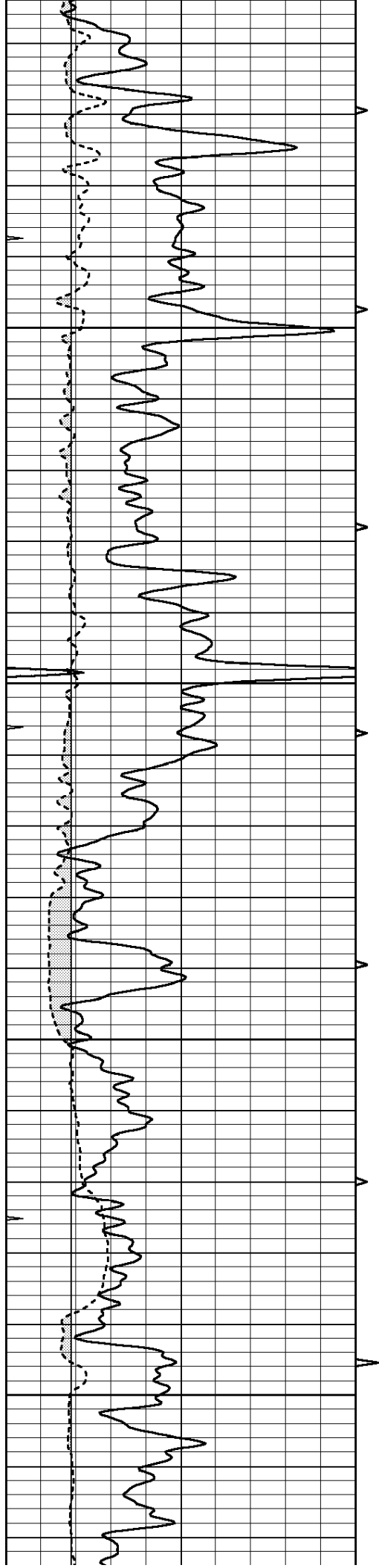
550









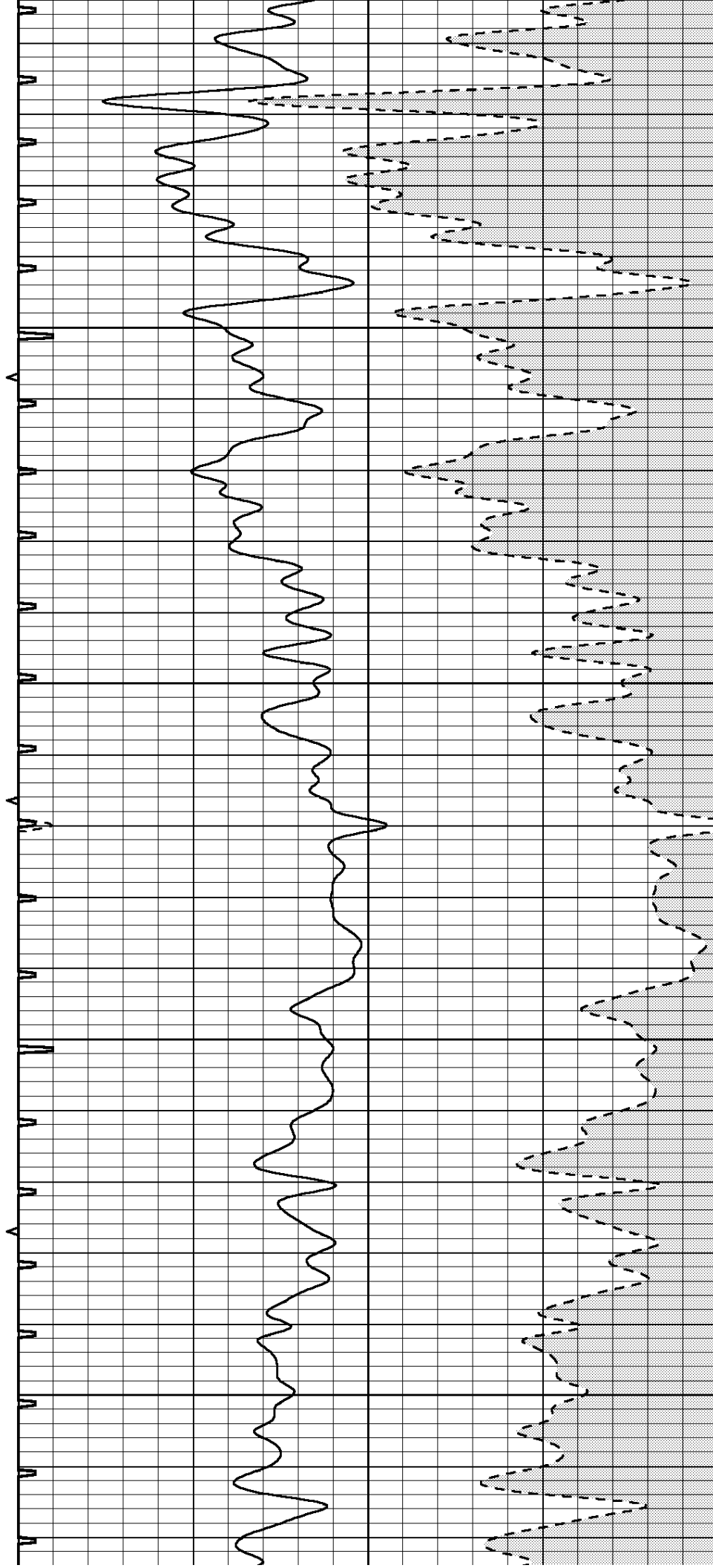


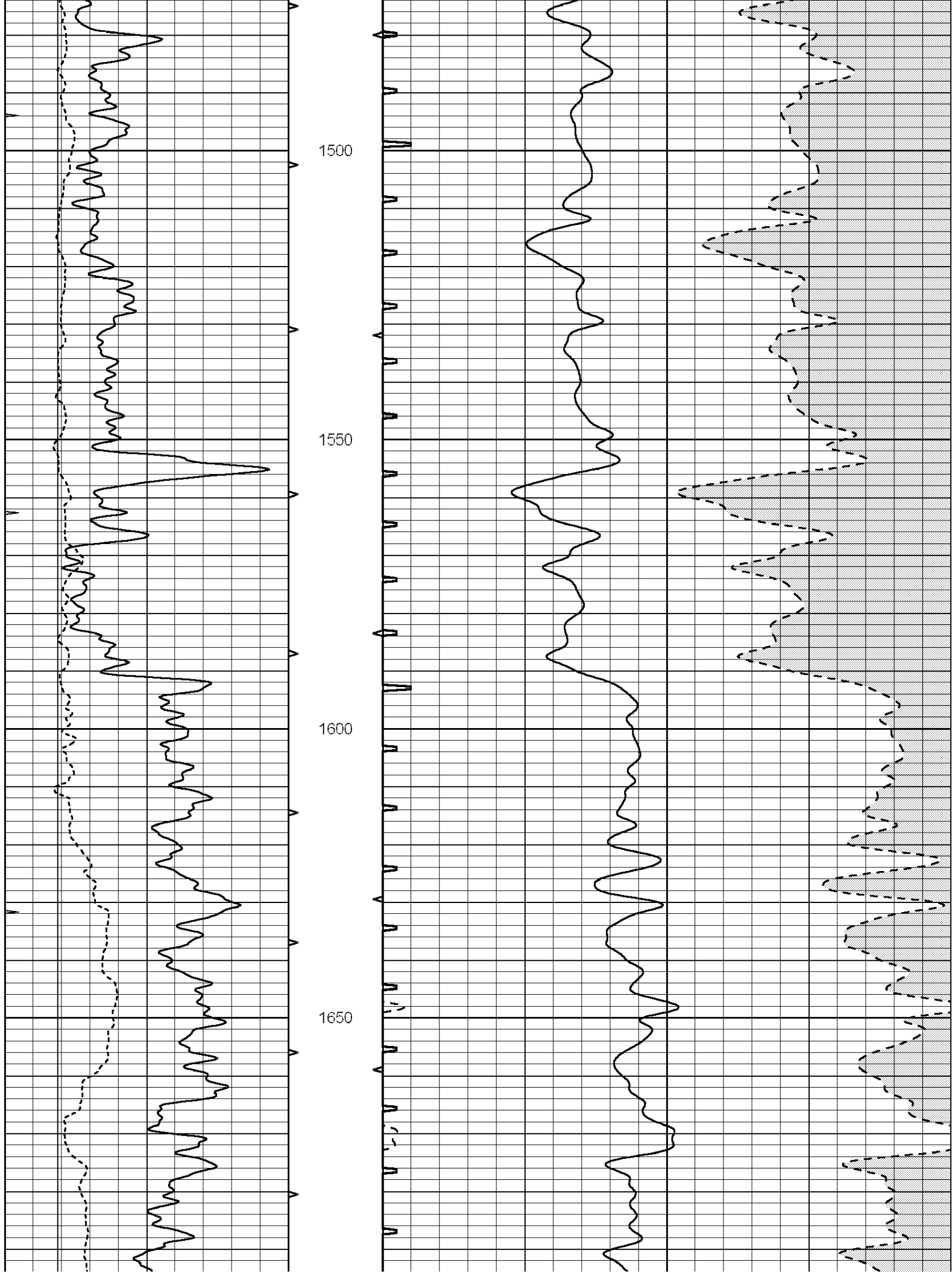
1300

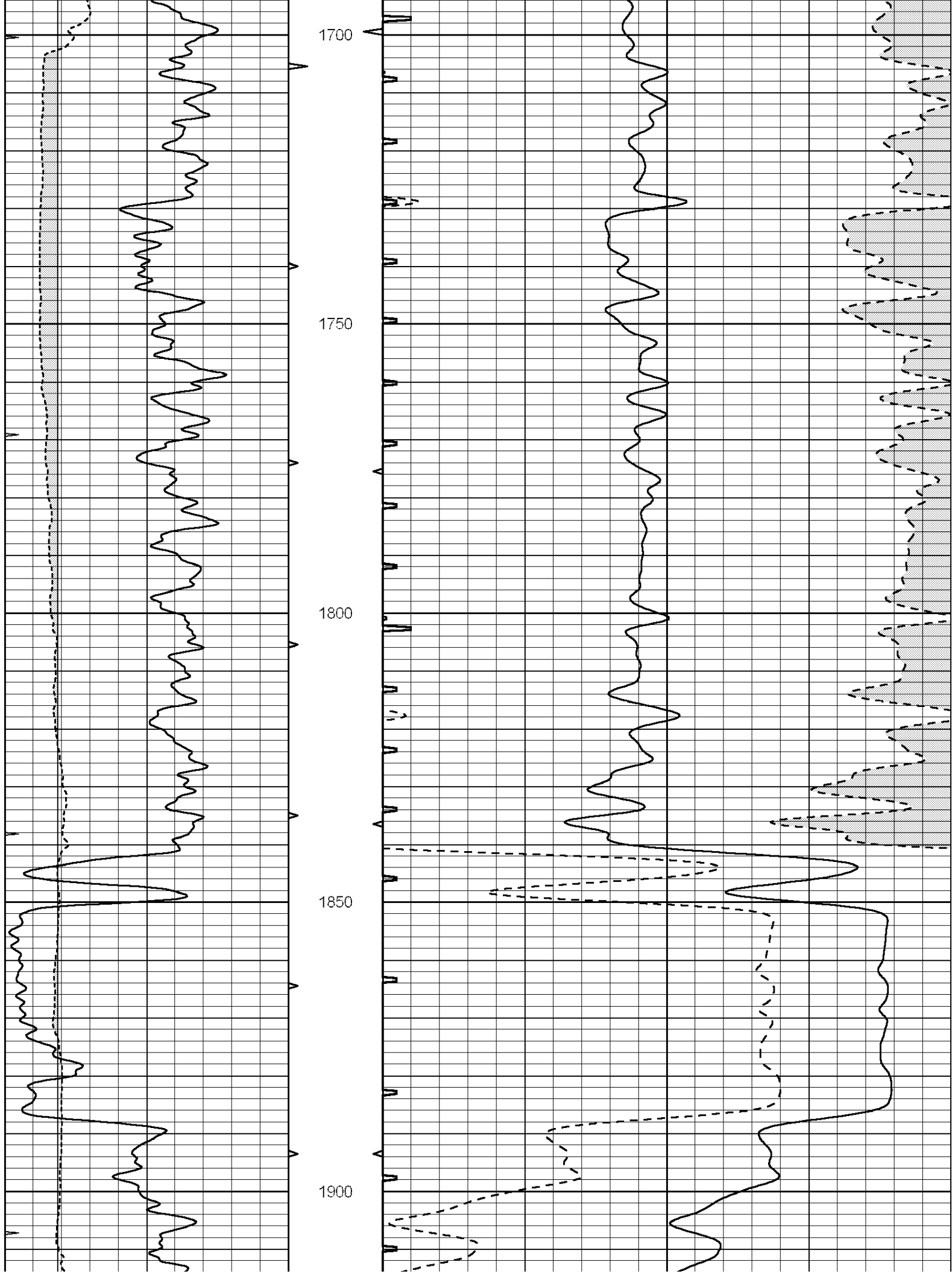
1350

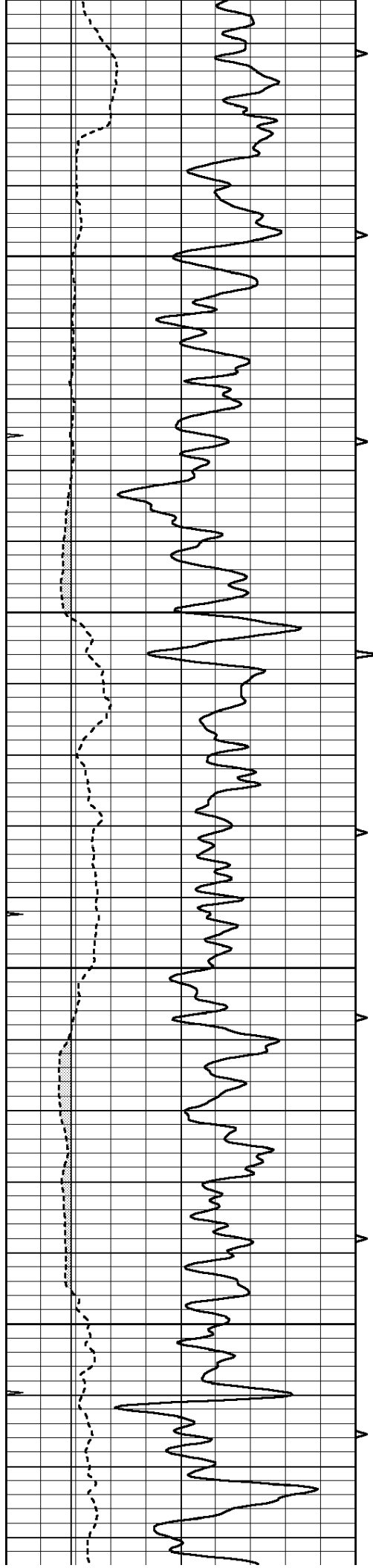
1400

1450







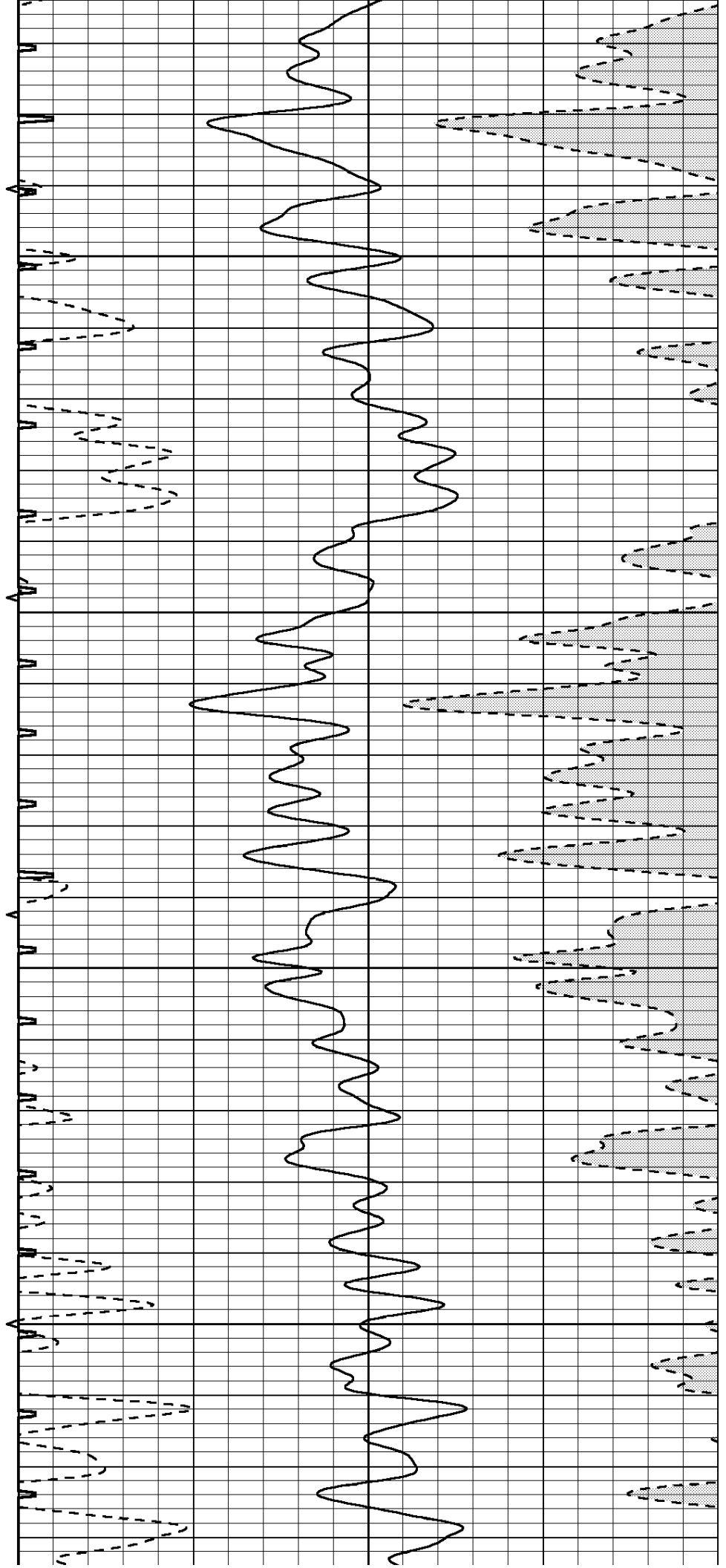


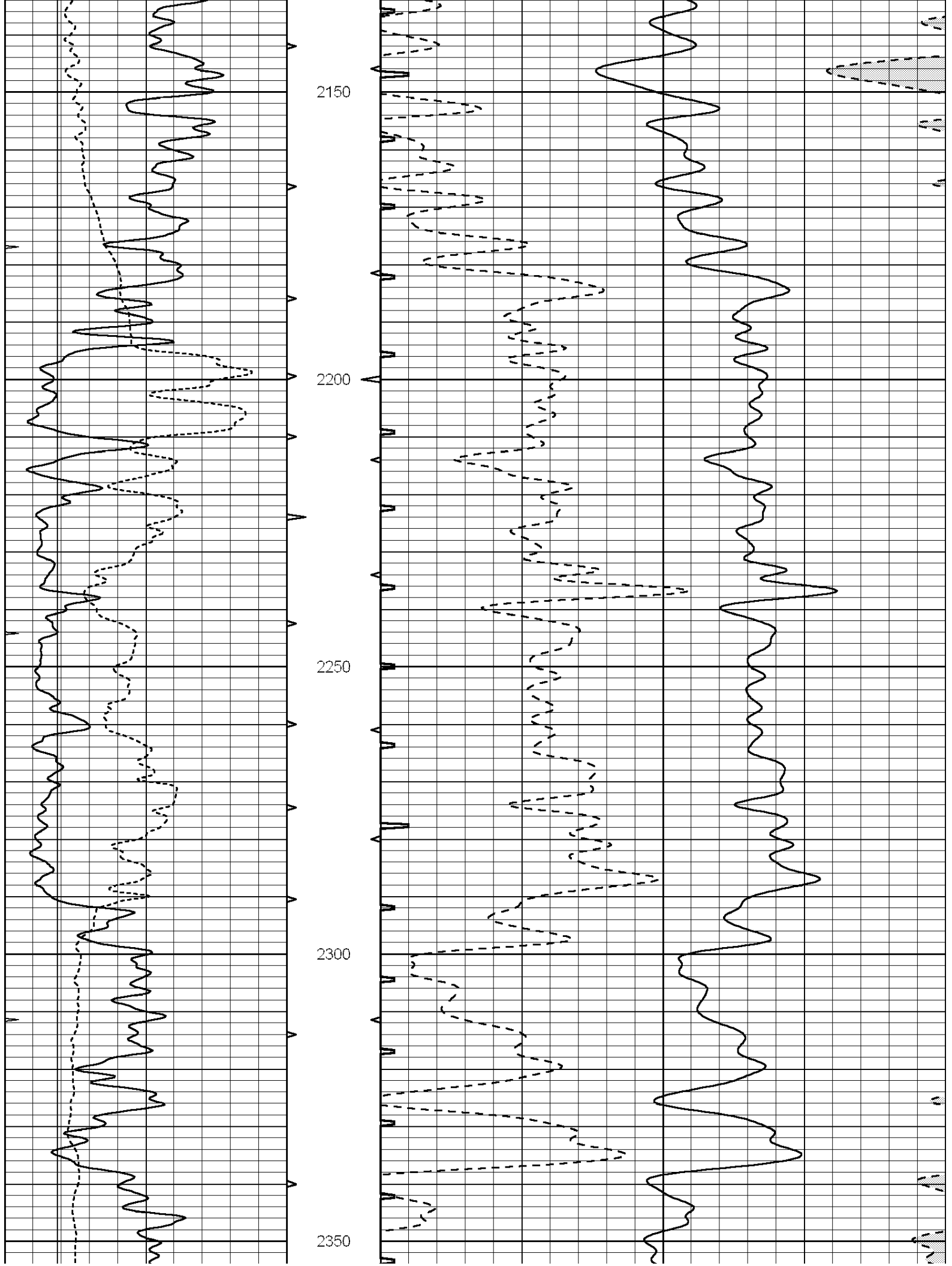
1950

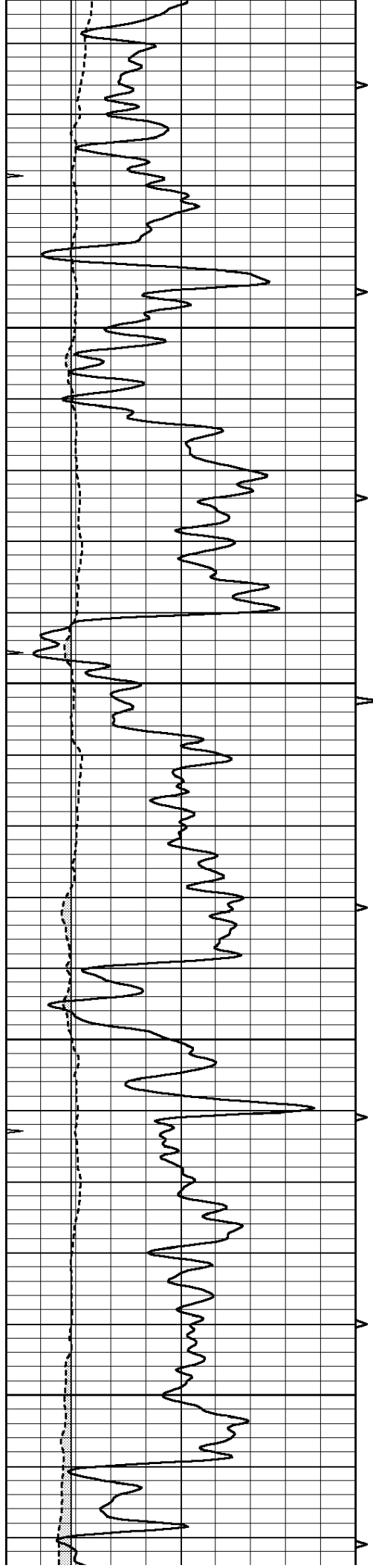
2000

2050

2100





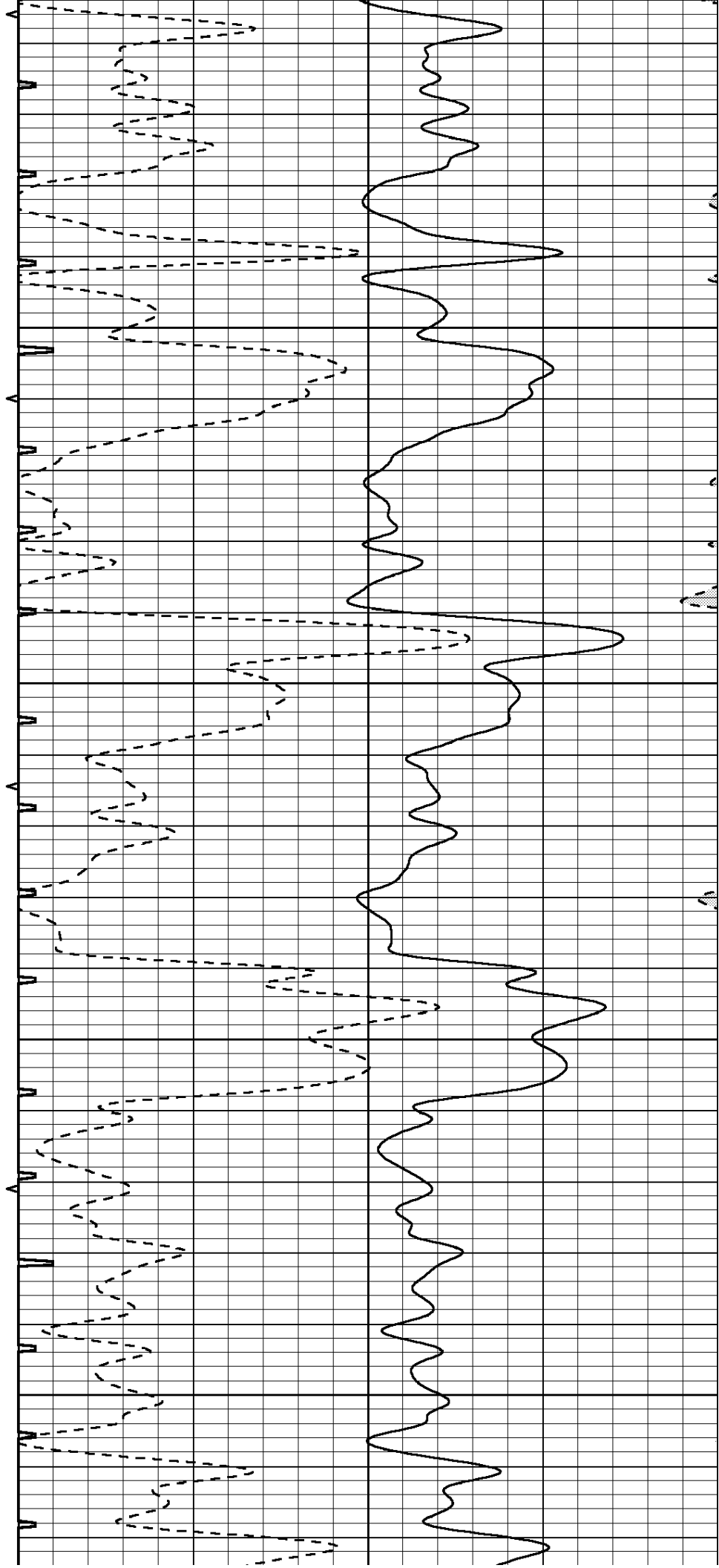


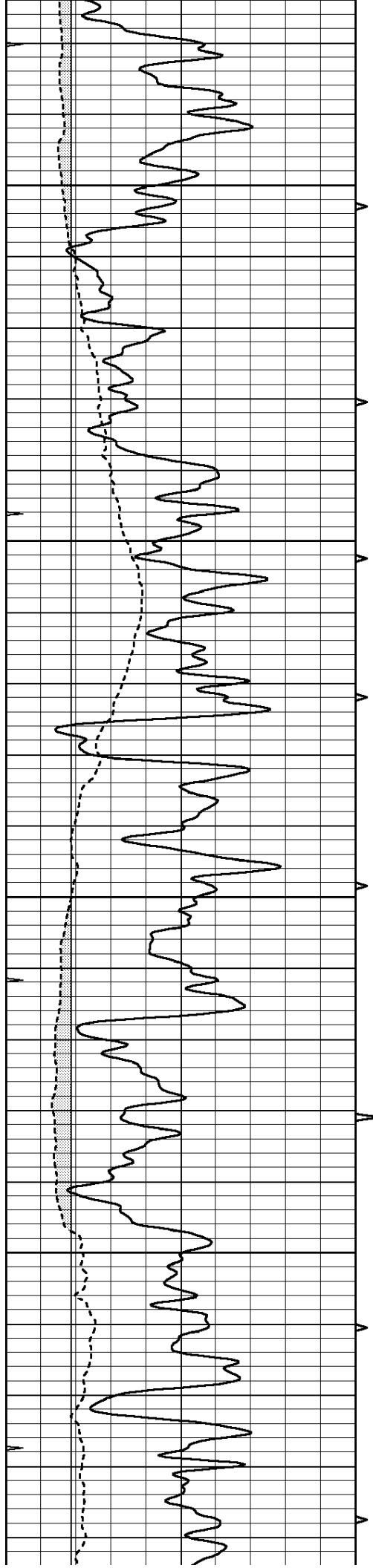
2400

2450

2500

2550



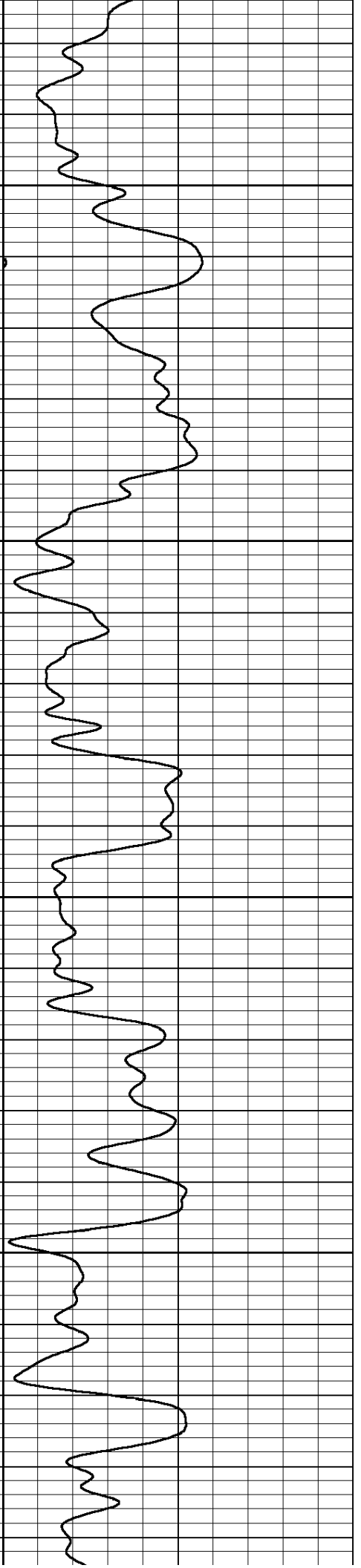
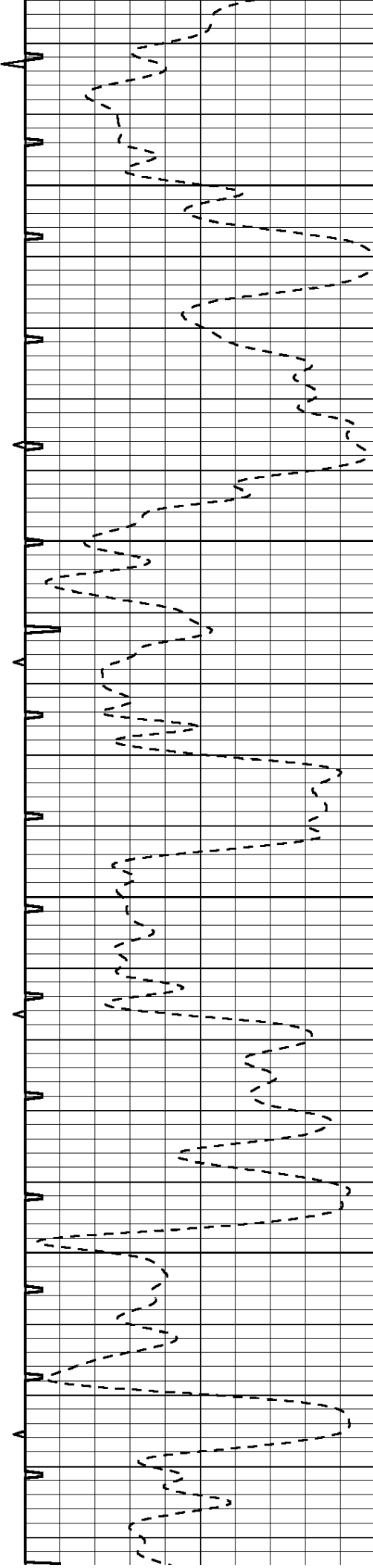


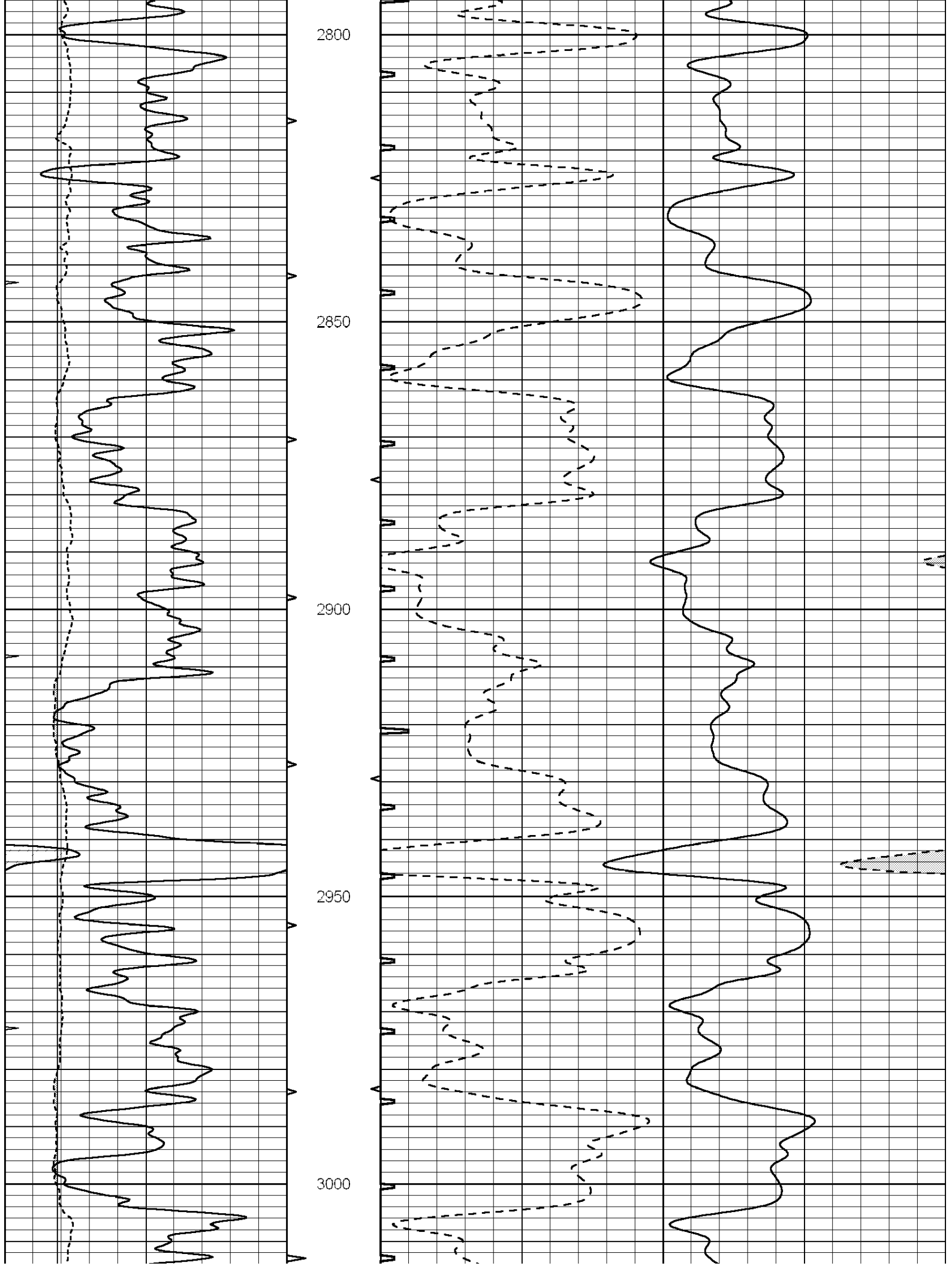
2600

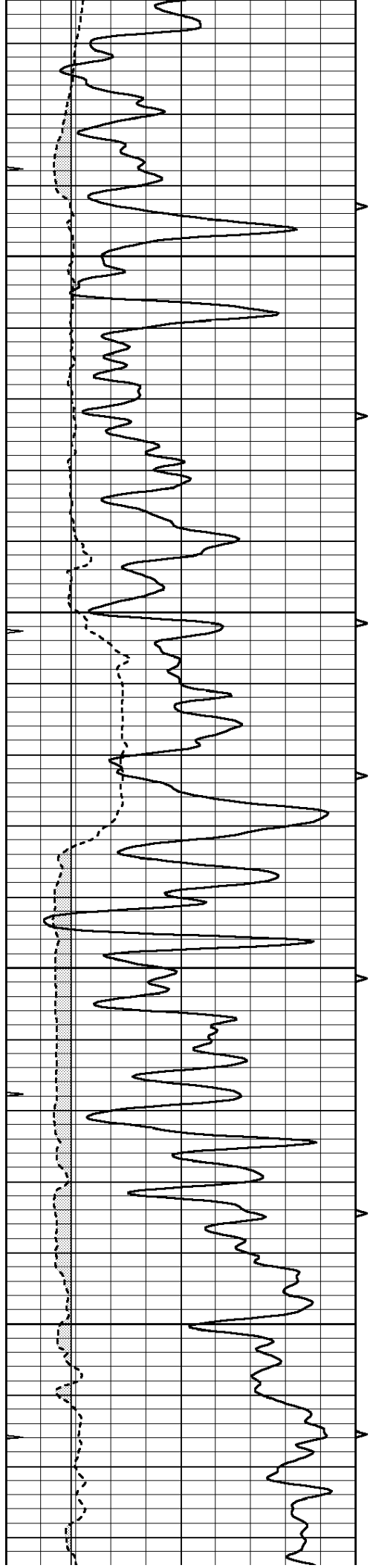
2650

2700

2750





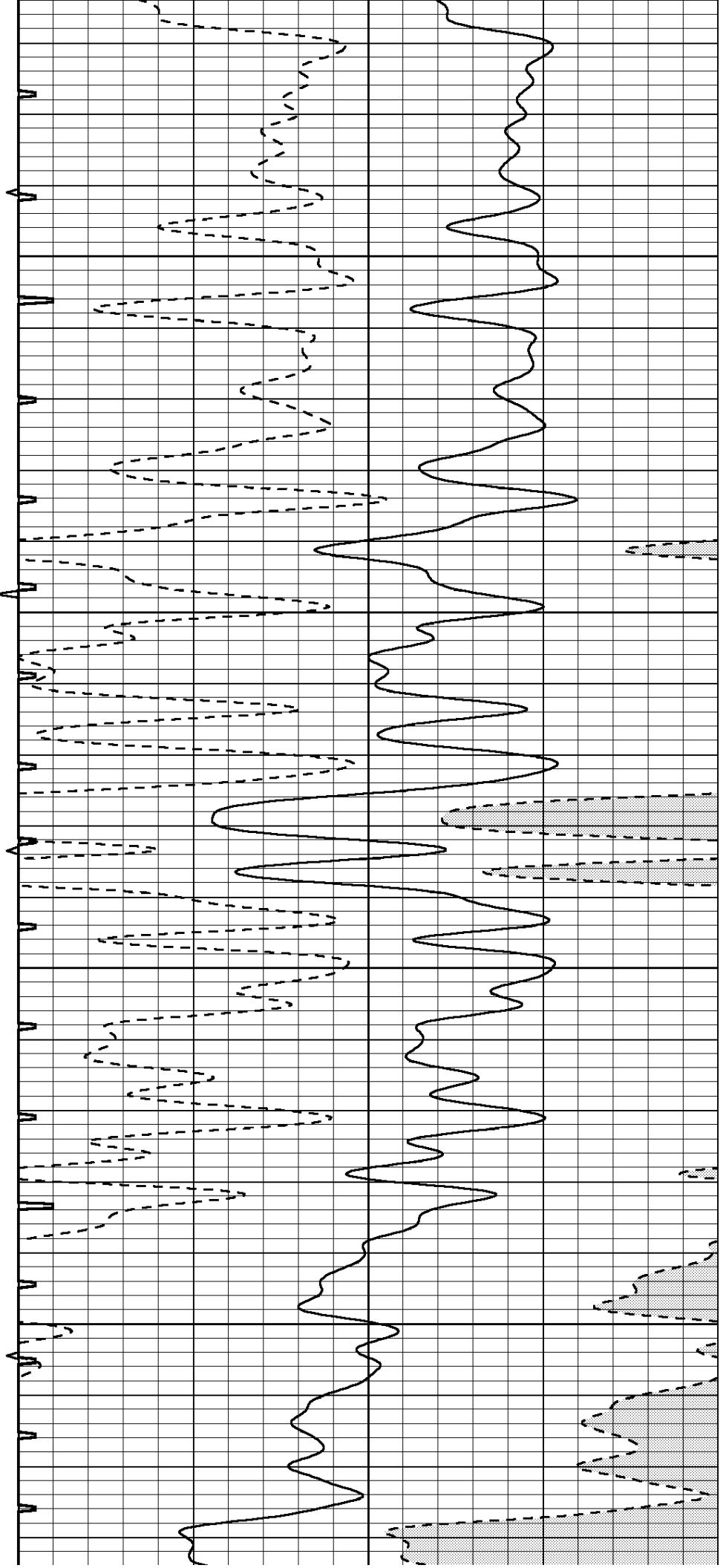


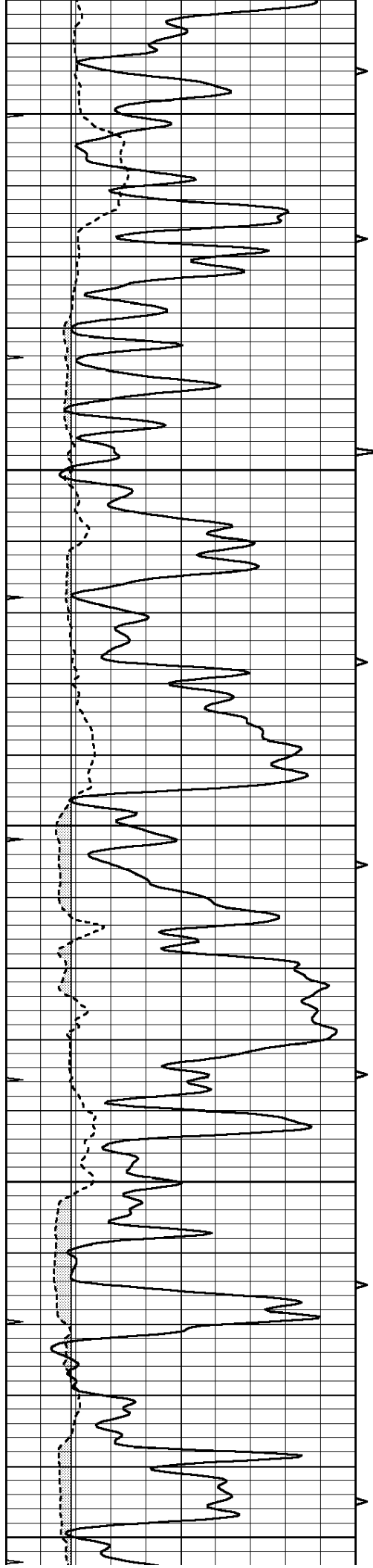
3050

3100

3150

3200





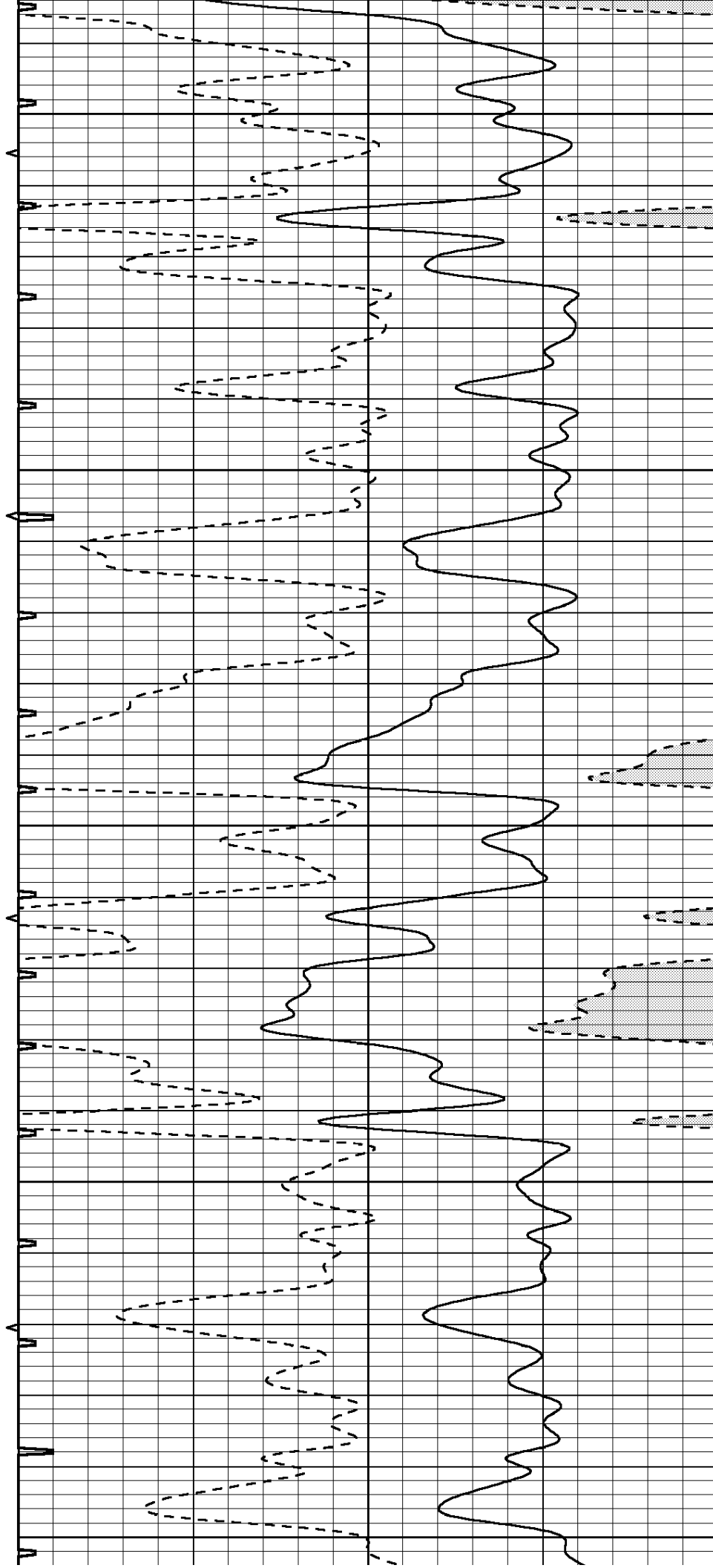
3250

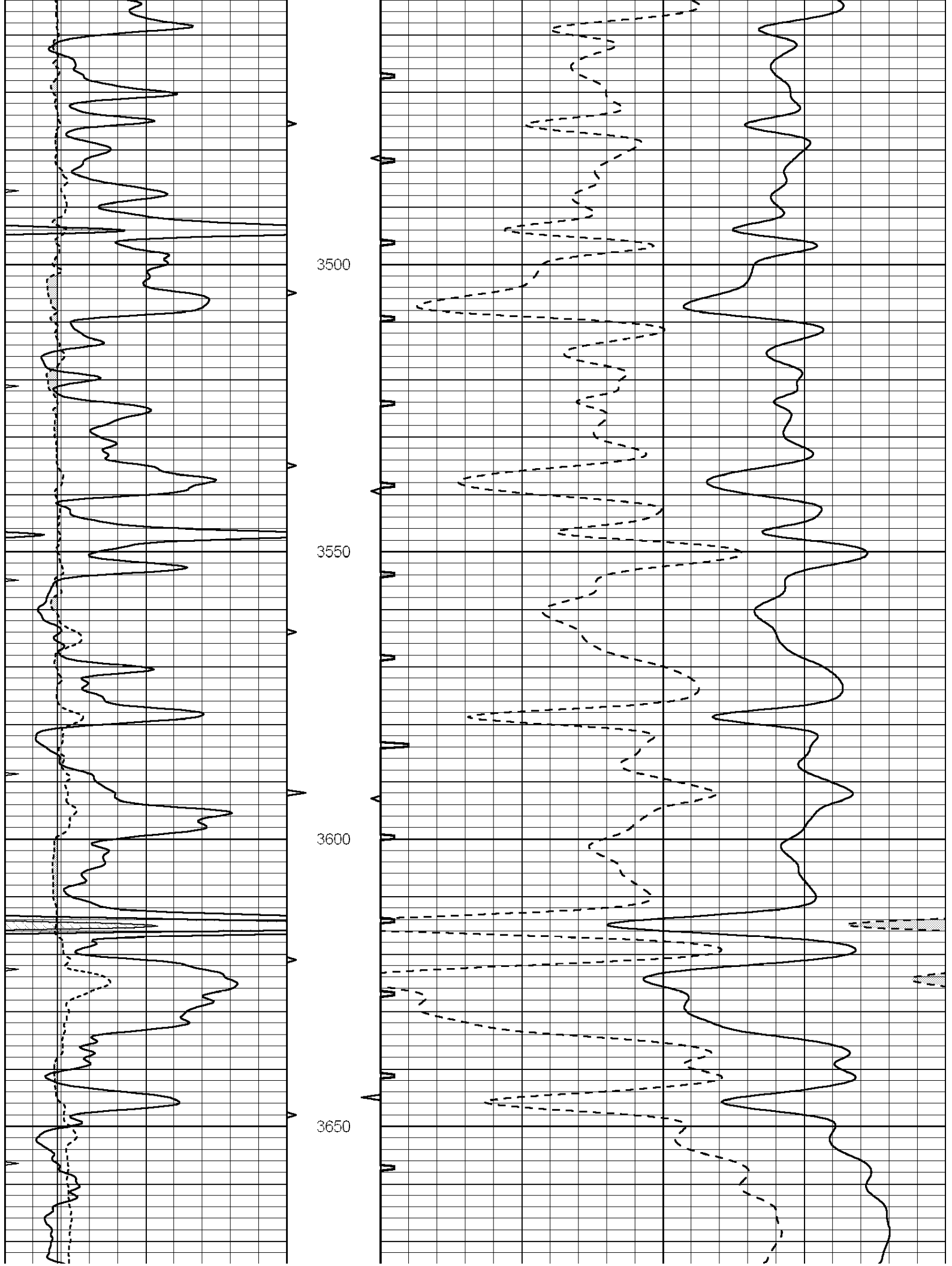
3300

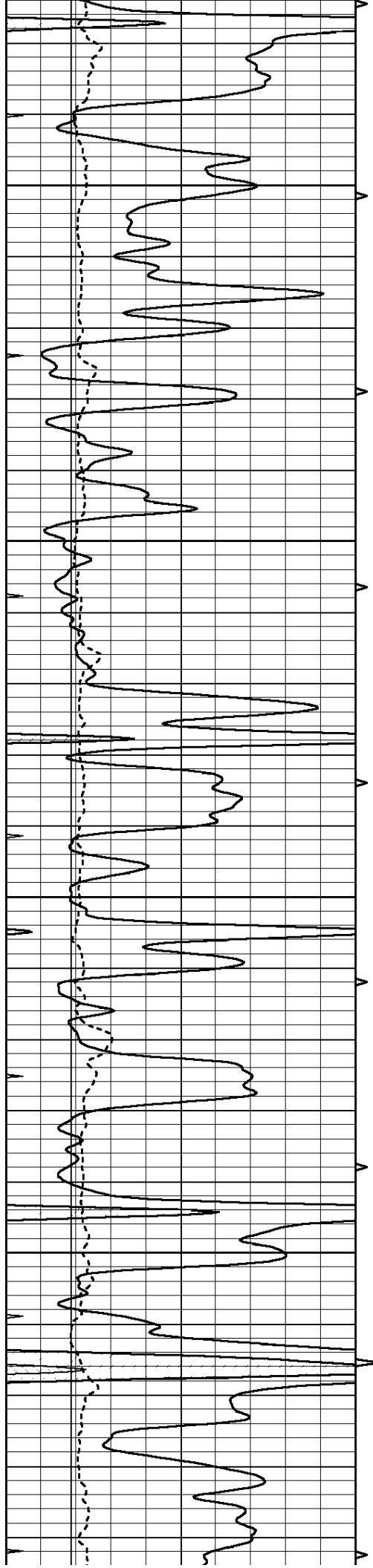
3350

3400

3450





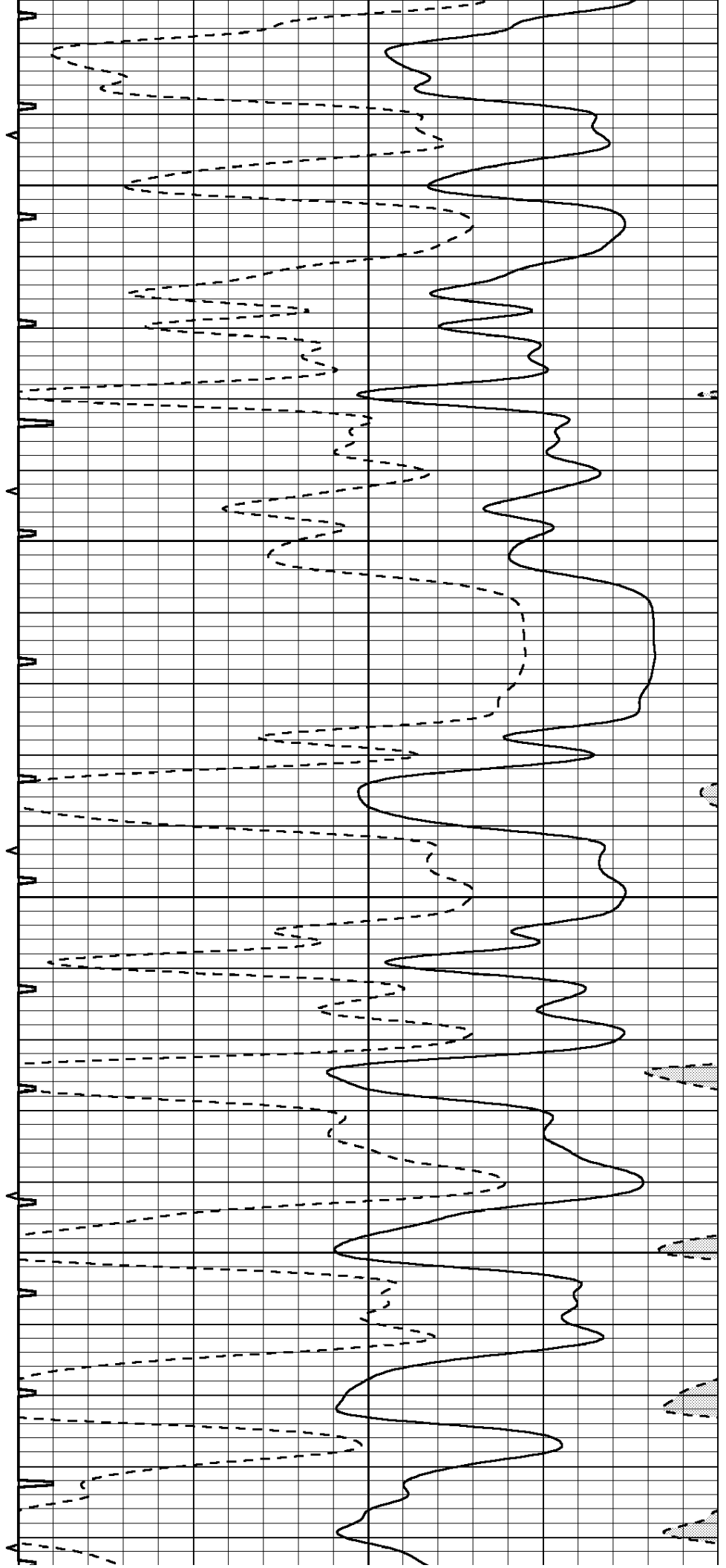


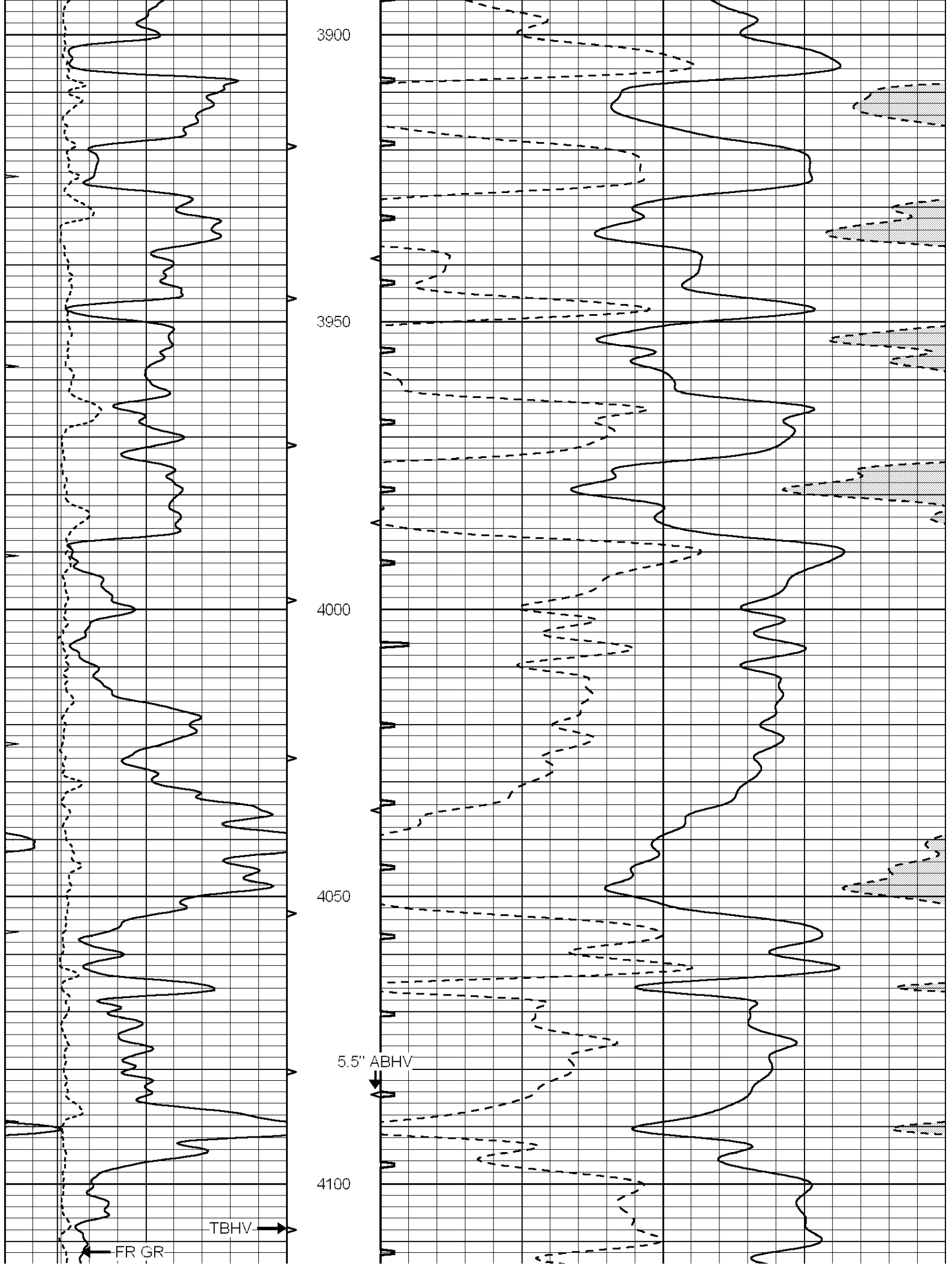
3700

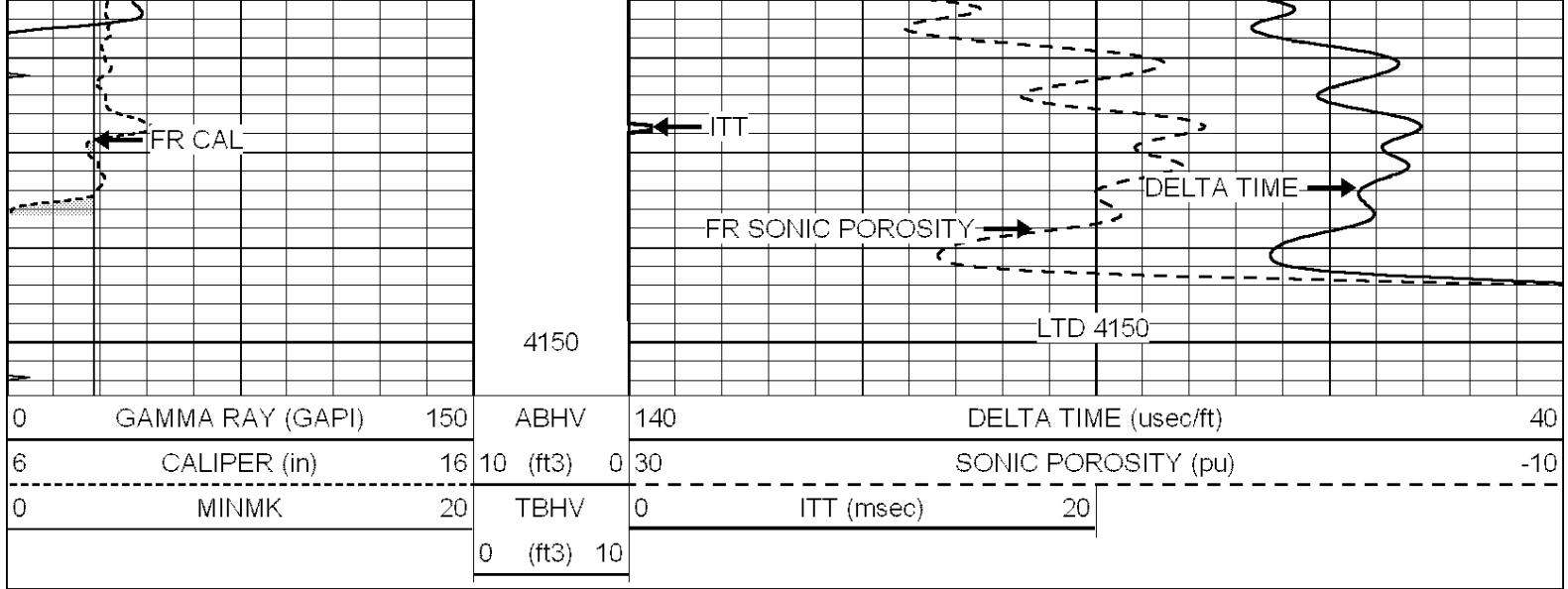
3750

3800

3850

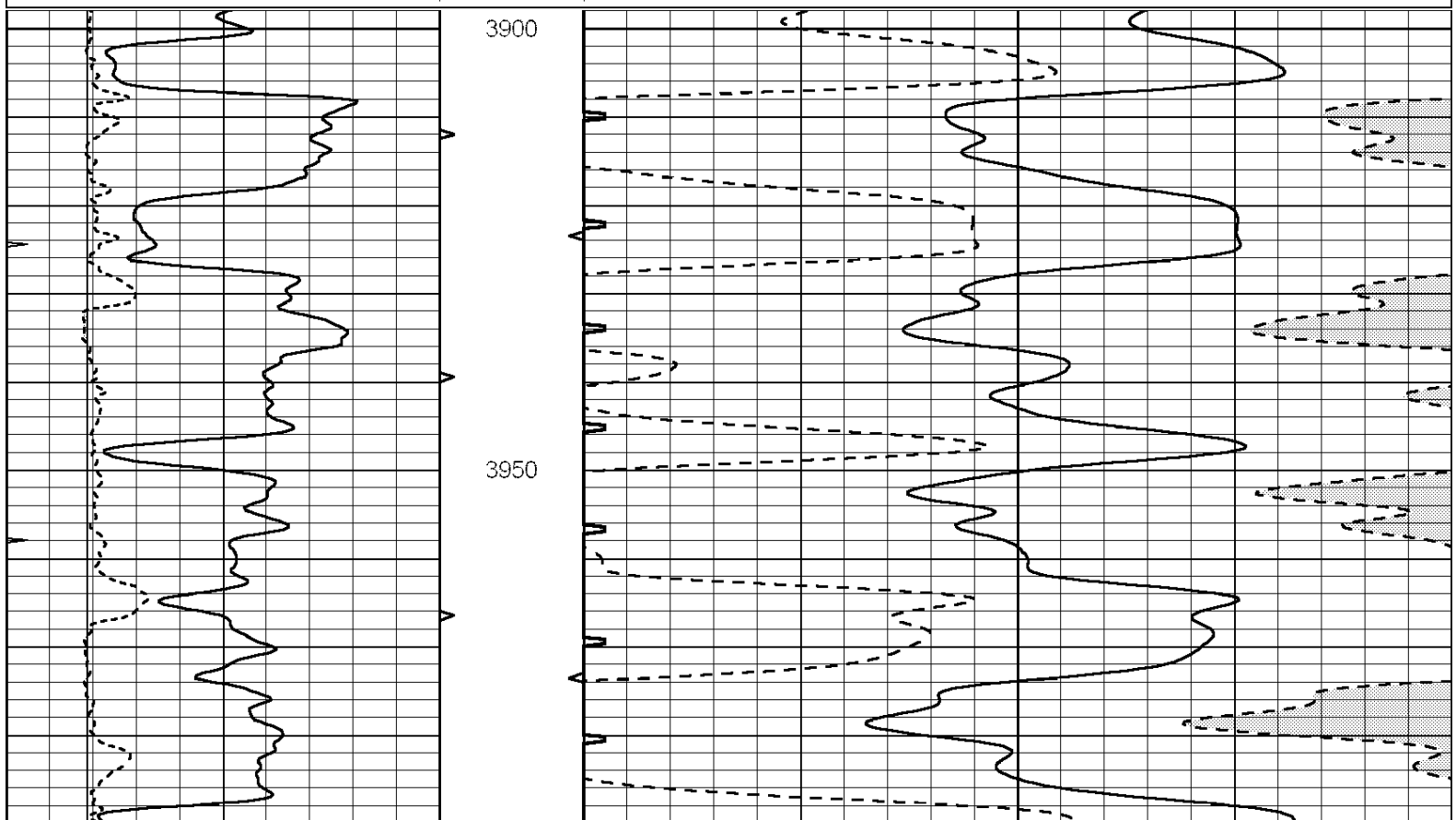
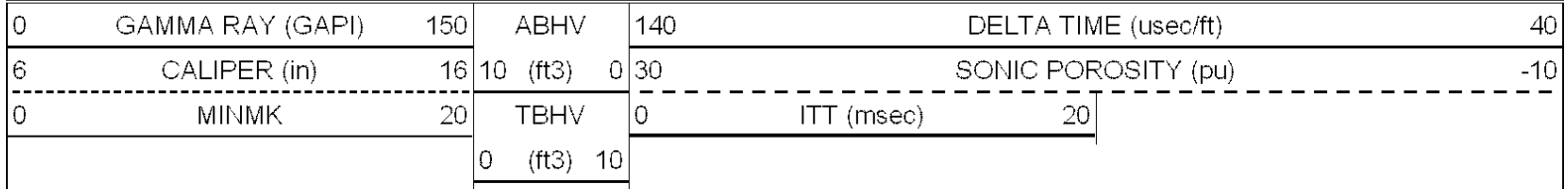


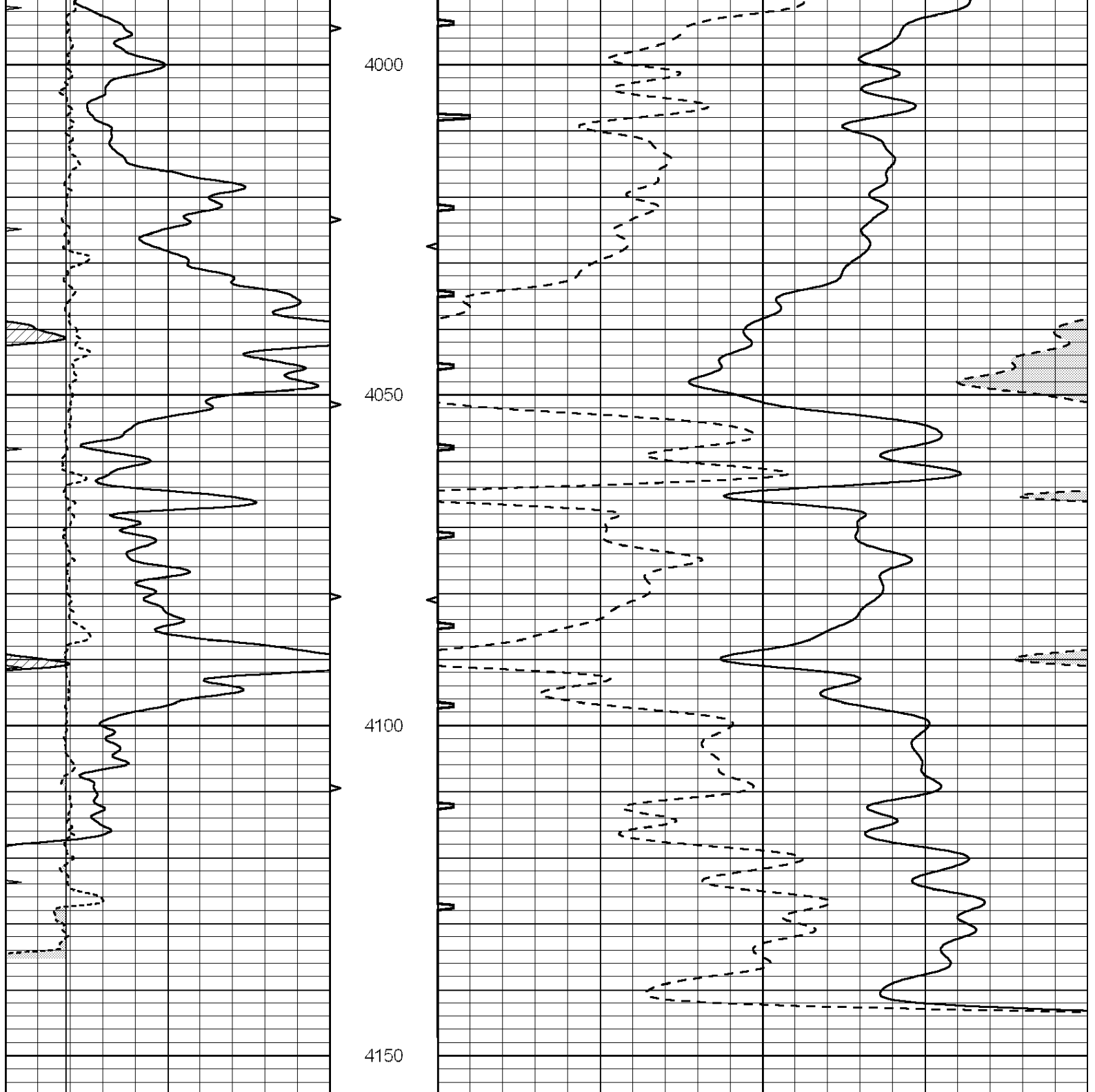




REPEAT SECTION

Database File: 010733ddn.db
 Dataset Pathname: pass6.9
 Presentation Format: slt
 Dataset Creation: Sun Mar 31 20:11:42 2013
 Charted by: Depth in Feet scaled 1:240





0	GAMMA RAY (GAPI)	150	ABHV	140	DELTA TIME (usec/ft)	40
6	CALIPER (in)	16	10 (ft3)	0 30	SONIC POROSITY (pu)	-10
0	MINMK	20	TBHV	0	ITT (msec)	20
			0 (ft3)	10		