



**COMPLETION
& PRODUCTION
SERVICES CO.**

**COMPENSATED
DENSITY / NEUTRON
LOG**

Company DOWNING - NELSON OIL CO. INC.
Well TAMMY "B" #1
Field WAKEENEY
County TREGO
State KANSAS

Company DOWNING - NELSON OIL COMPANY, INC.
Well TAMMY "B" #1
Field WAKEENEY
County TREGO State KANSAS

Location: API # : 15-195-22857-0000
575' FSL & 830' FEL
NW - SE - SW - SW
SEC 26 TWP 11S RGE 23W
Permanent Datum GROUND LEVEL Elevation 2380
Log Measured From KELLY BUSHING 8' A.G.L.
Drilling Measured From KELLY BUSHING
Other Services
DIL/MEL
SONIIC
Elevation
K.B. 2388
D.F. 2386
G.L. 2380

Date	3/31/13		
Run Number	ONE		
Depth Driller	4150		
Depth Logger	4150		
Bottom Logged Interval	4126		
Top Log Interval	3300		
Casing Driller	8 5/8"@220'		
Casing Logger	220		
Bit Size	7 7/8"		
Type Fluid in Hole	CHEMICAL MUD	CHLORIDES 2,000 PPM	
Density / Viscosity	8.9/56		
pH / Fluid Loss	10.5/8.0		
Source of Sample	FLOWLINE		
Rim @ Meas. Temp	.950@80F		
Rmf @ Meas. Temp	.713@80F		
Rmc @ Meas. Temp	1.14@80F		
Source of Rmf / Rmc	MEASUREMENT		
Rim @ BHT	.650@117F		
Time Circulation Stopped	2 HOURS		
Time Logger on Bottom	5:30 P.M.		
Maximum Recorded Temperature	117F		
Equipment Number	4854		
Location	HAYS, KANSAS		
Recorded By	JEFF LUEBBERS		
Witnessed By	RON NELSON		

<<< Fold Here >>>

All interpretations are opinions based on inferences from electrical or other measurements and we cannot and do not guarantee the accuracy or correctness of any interpretation, and we shall not, except in the case of gross or willful negligence on our part, be liable or responsible for any loss, costs, damages, or expenses incurred or sustained by anyone resulting from any interpretation made by any of our officers, agents or employees. These interpretations are also subject to our general terms and conditions set out in our current Price Schedule.

Comments

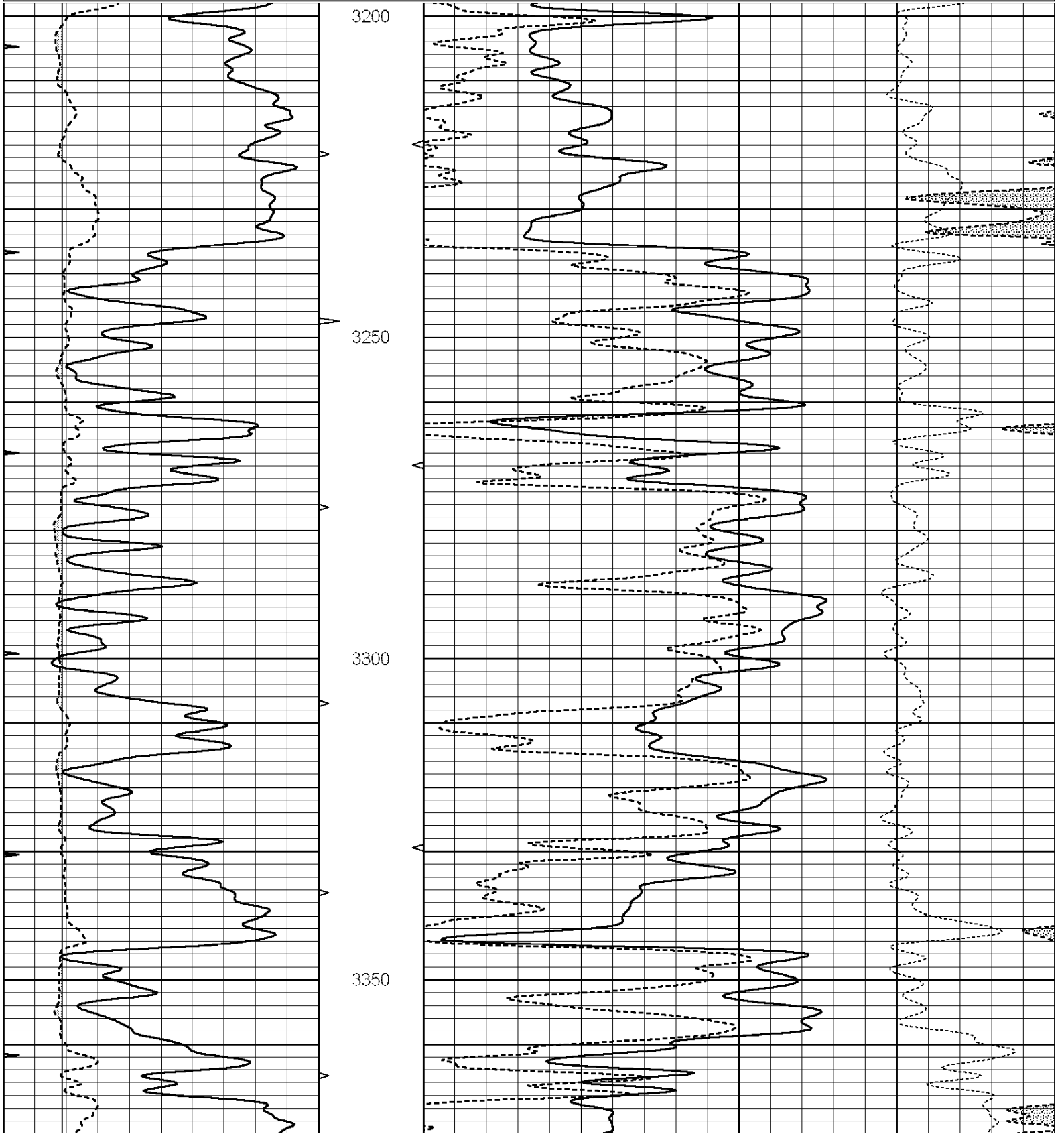
THANK YOU FOR USING "NABORS" HAYS, KANSAS (785) 628-6395
DIRECTIONS
WAKEENEY, KS. (N. EDGE) TO HIXON RD., "H RD.", 1E. TO "270TH RD.", 2N., E. INTO

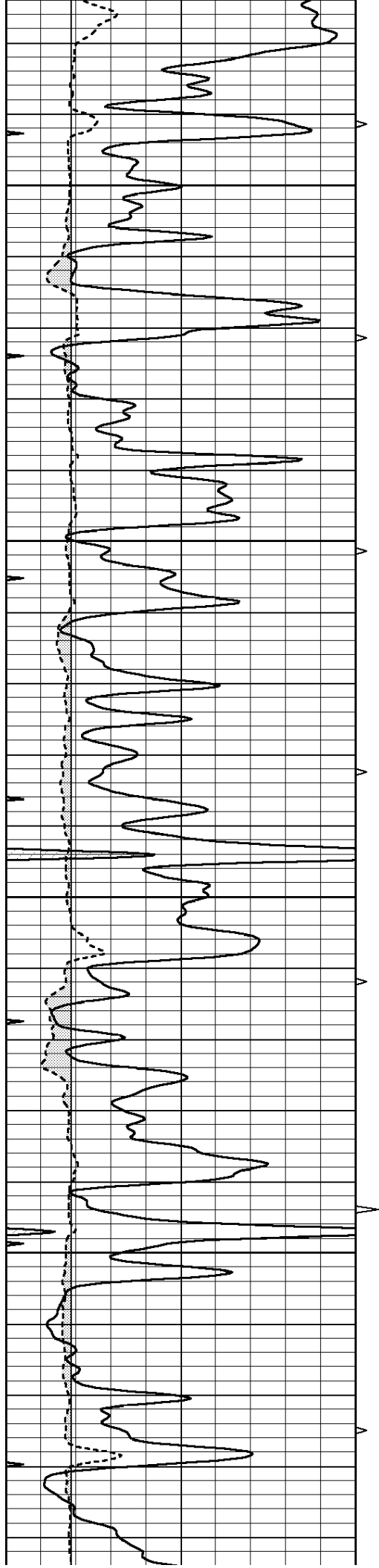


MAIN SECTION

Database File: 010733ddn.db
 Dataset Pathname: pass4.9
 Presentation Format: den_neu
 Dataset Creation: Sun Mar 31 18:40:36 2013 by Calc SOC 120430
 Charted by: Depth in Feet scaled 1:240

0	GAMMA RAY (GAPI)	150	ABHV	30	COMPENSATED DENSITY (pu)	-10
6	CALIPER (in)	16	10 (ft3)	0 30	COMPENSATED NEUTRON (pu)	-10
0	MINMK	20	TBHV		-0.25 CORRECTION (g/cc)	0.25
			0 (ft3)	10		



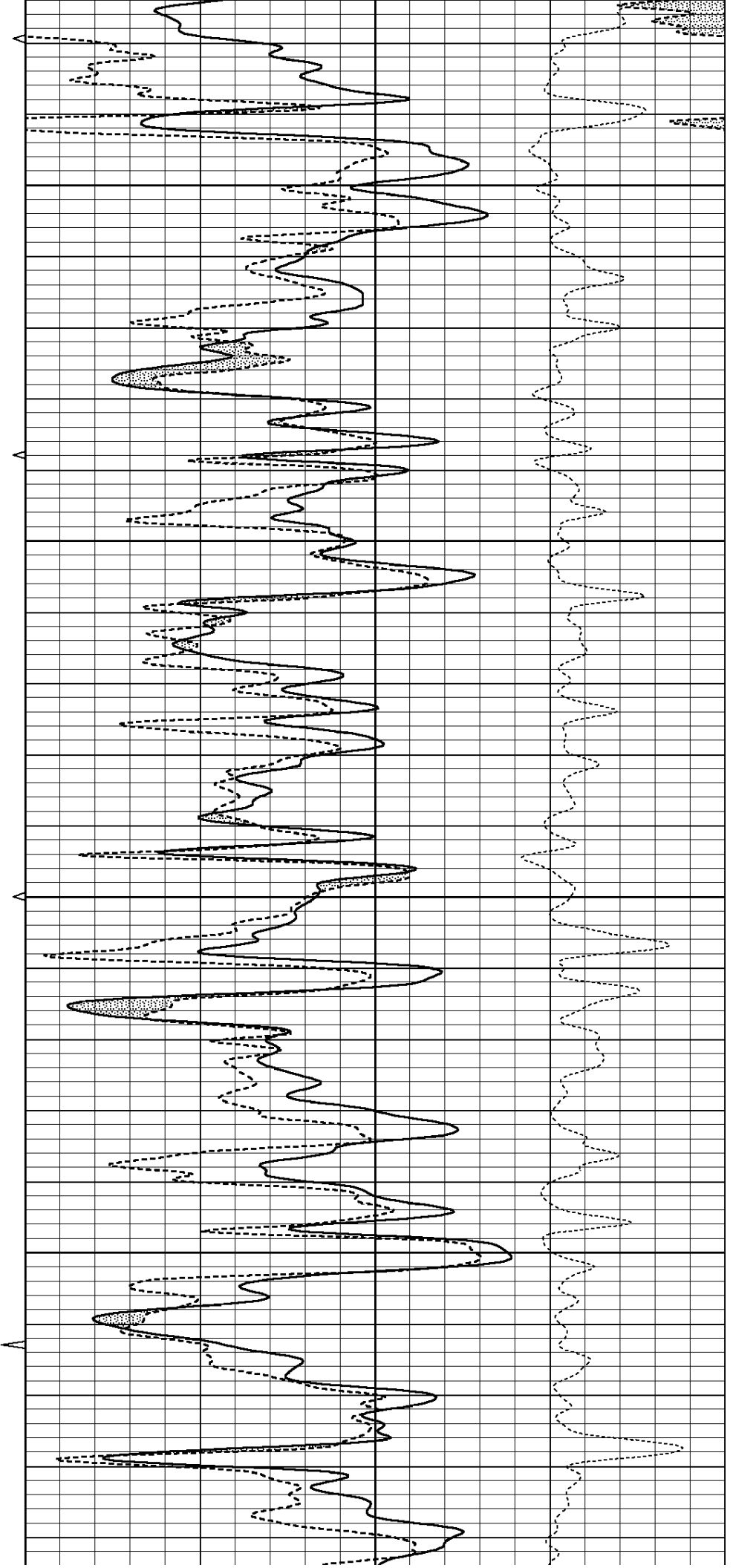


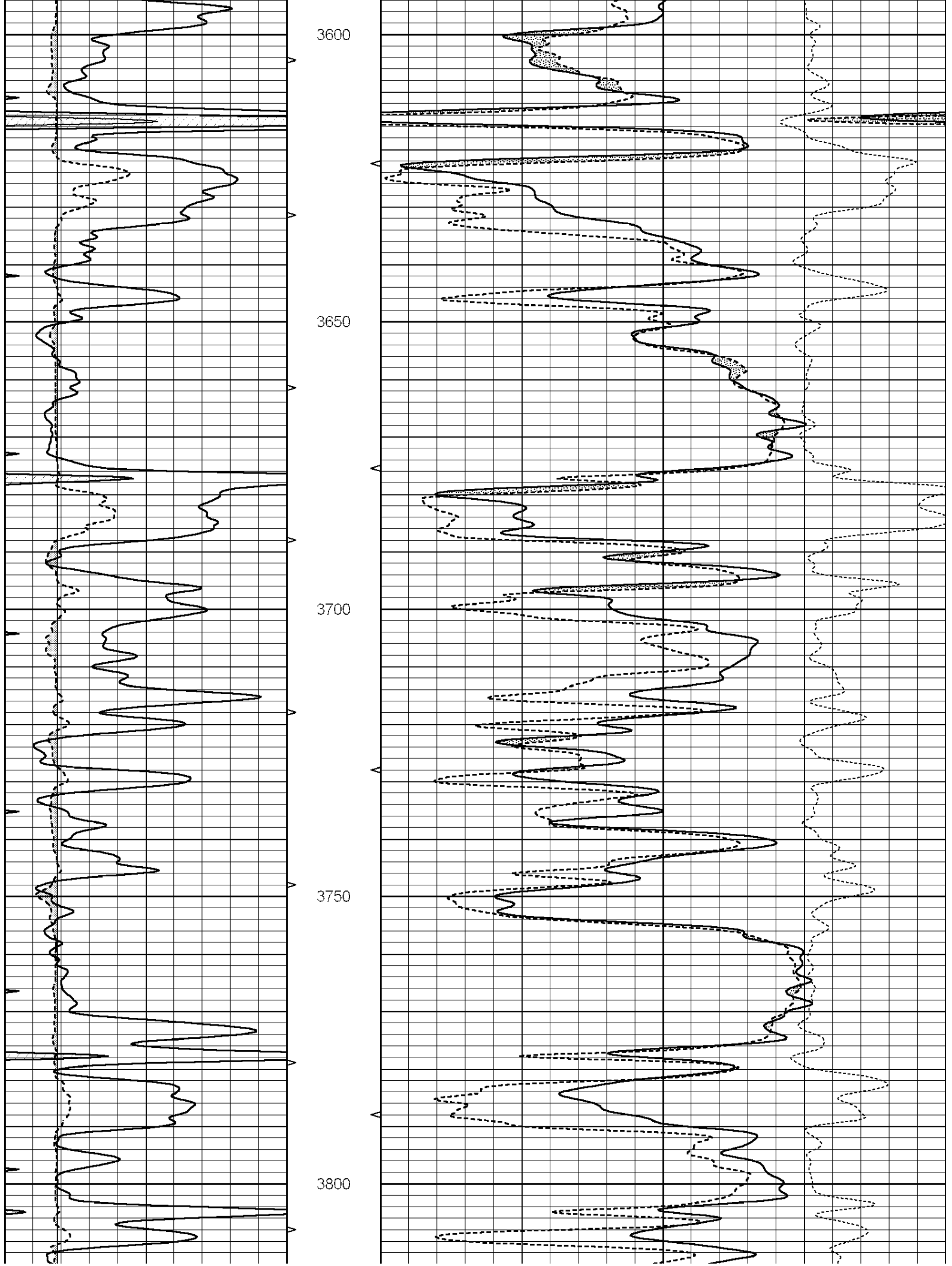
3400

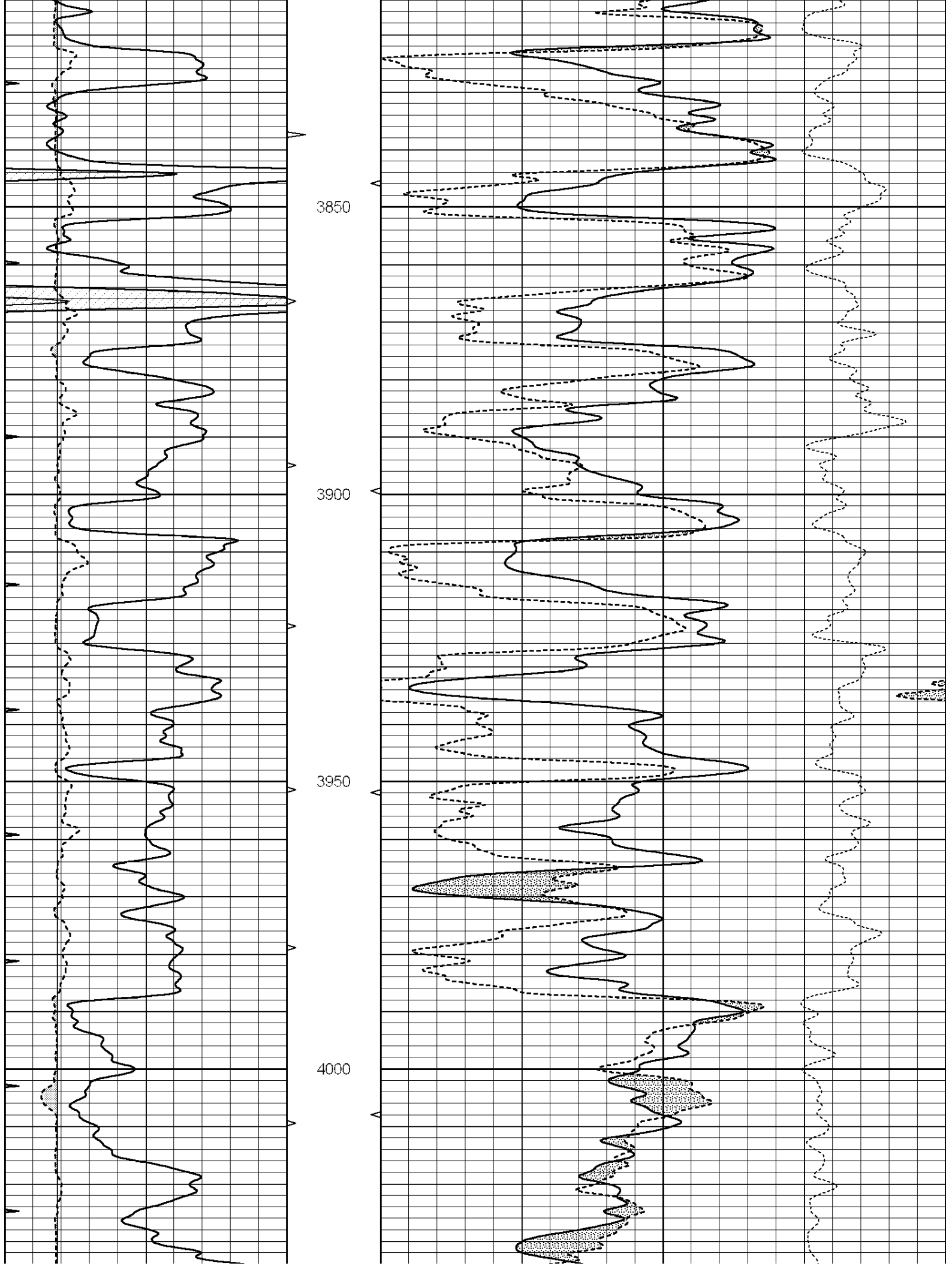
3450

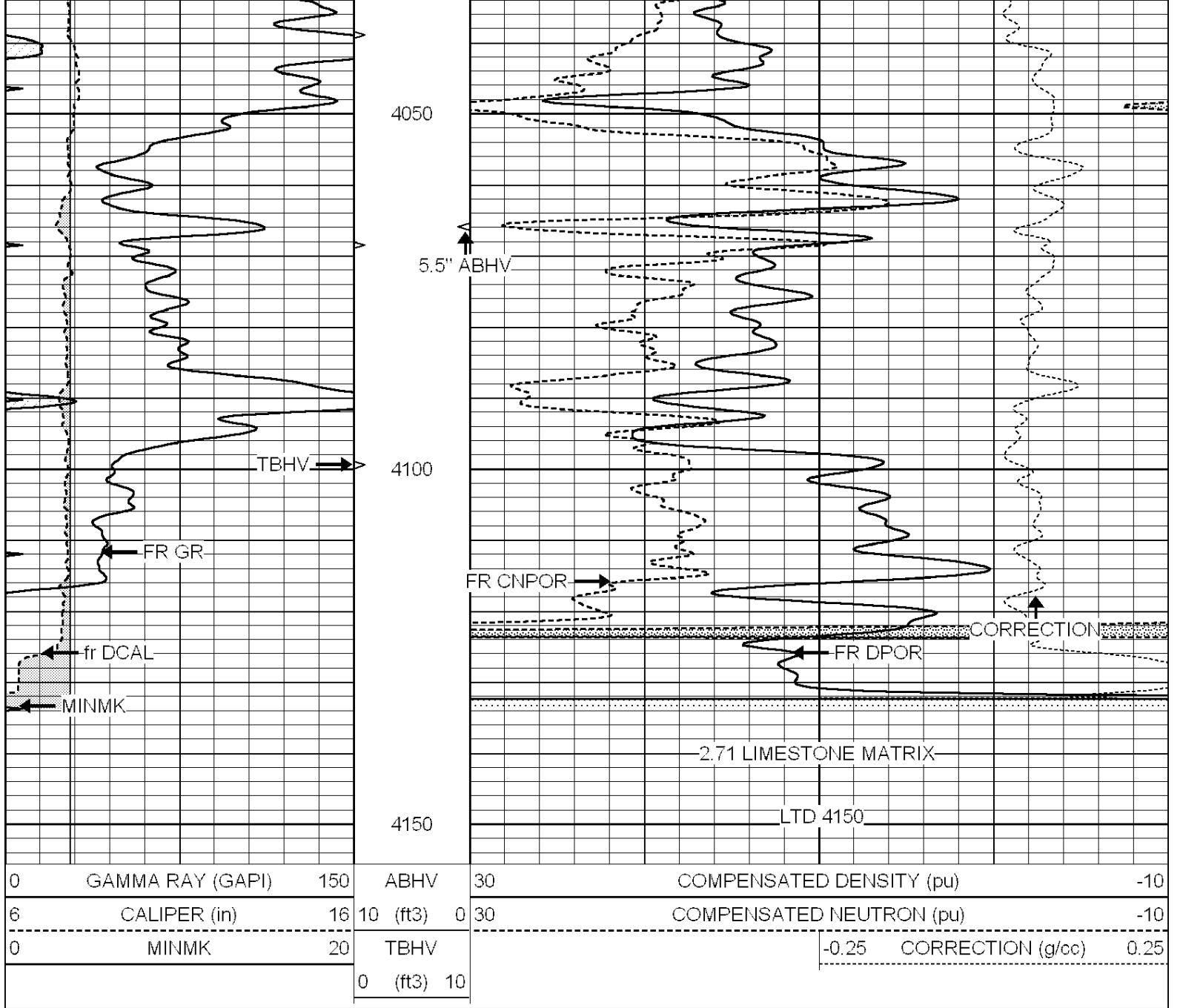
3500

3550





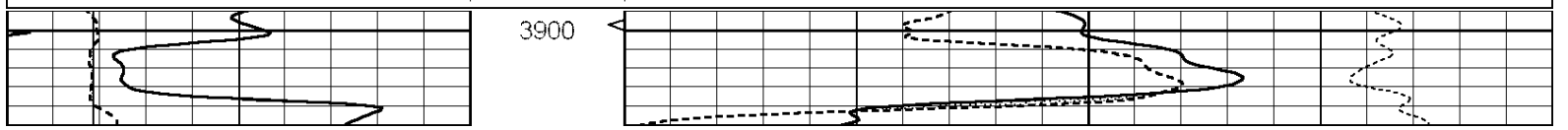


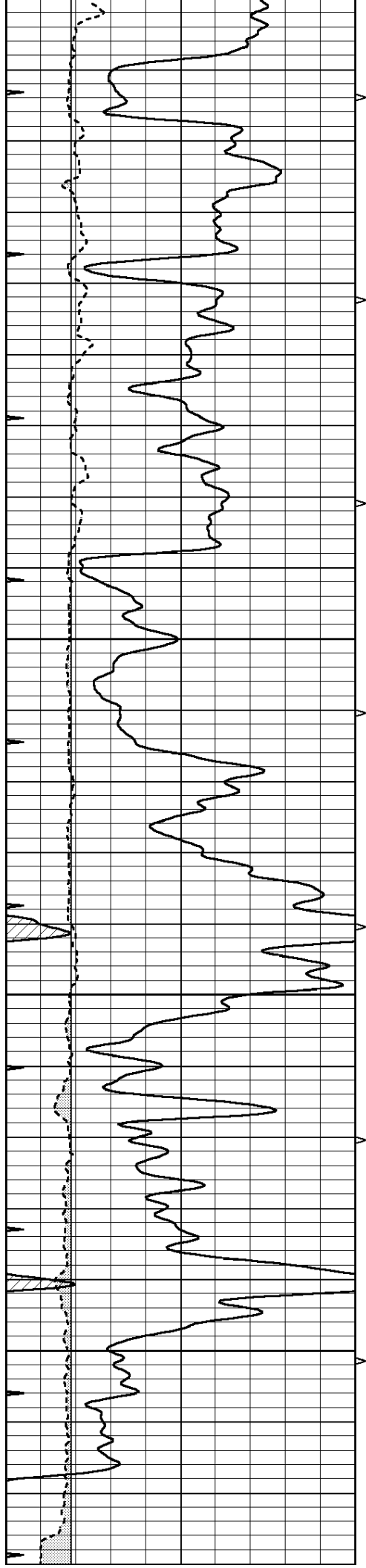


REPEAT SECTION

Database File: 010733ddn.db
 Dataset Pathname: pass3.7
 Presentation Format: den_neu
 Dataset Creation: Sun Mar 31 18:41:28 2013 by Calc SOC 120430
 Charted by: Depth in Feet scaled 1:240

0	GAMMA RAY (GAPI)	150	ABHV	30	COMPENSATED DENSITY (pu)	-10
6	CALIPER (in)	16	10 (ft3)	0 30	COMPENSATED NEUTRON (pu)	-10
0	MINMK	20	TBHV		-0.25	CORRECTION (g/cc) 0.25
			0 (ft3)	10		



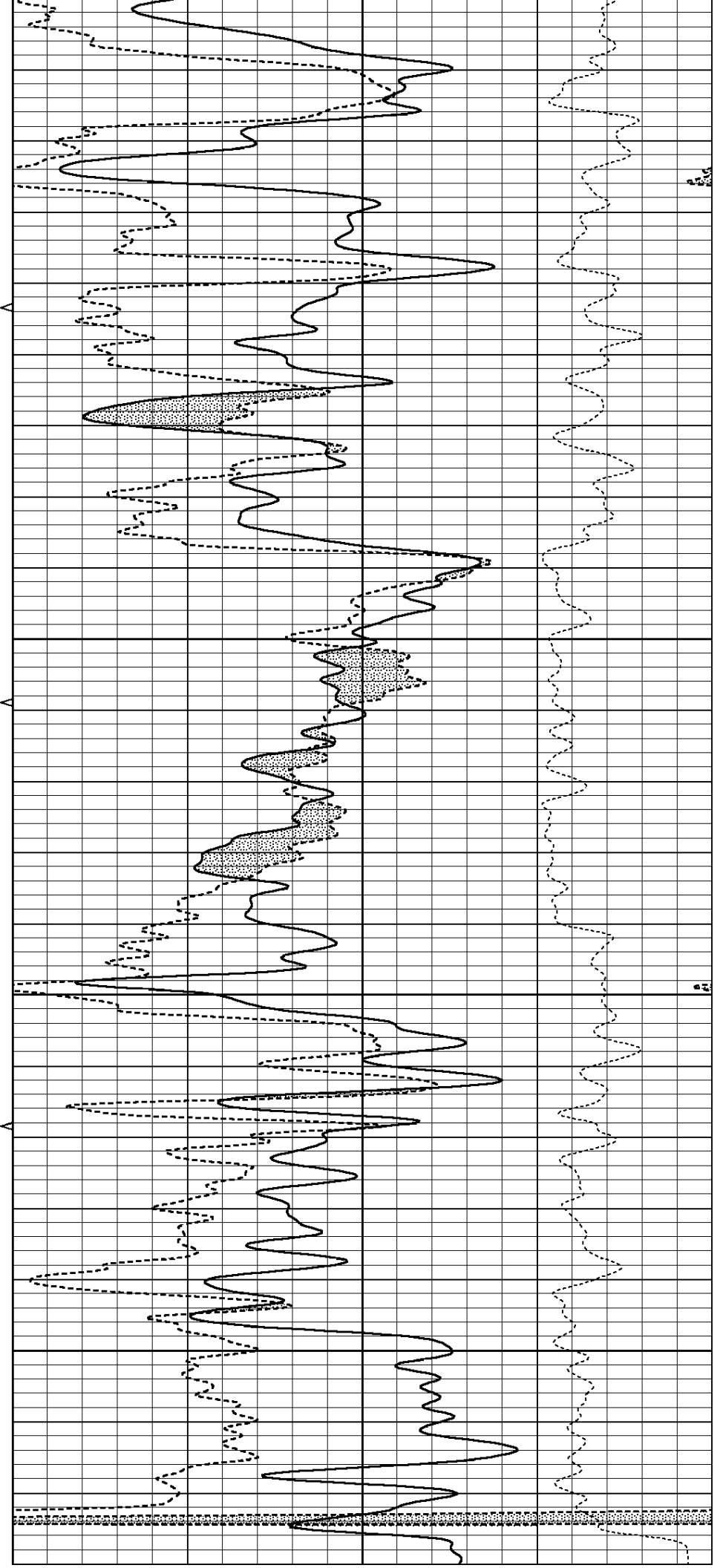


3950

4000

4050

4100



	Background	Magnesium	Aluminum	Sanctions	
Window 1	1686.6	11612.8	3932.0	12718.8	cps
Window 2	1531.4	9204.7	3267.8	9851.9	cps
Window 3	1198.3	4733.6	1952.5	4920.6	cps
Window 4	317.3	321.2	325.9	303.6	cps
Long Space	0.0	7673.3	1736.4	8320.4	cps
Short Space	1.7	2548.5	1657.2	2628.8	cps
Rho		1.7100	2.5900	1.3800	g/cc
Pe		0.0000	2.5700	1.5500	

Rib Angle : 43.8 Rib Slope : 0.961 Density/Spine Ratio : 0.569
 Spine Angle : 73.8 Spine Slope : 3.453 Spine Intercept : -18.1

Before Survey Verification

Performed Wed Dec 31 18:00:00 1969

Window 1	0.0	0.0	0.0	0.0	cps
Window 2	0.0	0.0	0.0	0.0	cps
Window 3	0.0	0.0	0.0	0.0	cps
Window 4	0.0	0.0	0.0	0.0	cps
Long Space	0.0	0.0	0.0	0.0	cps
Short Space	0.0	0.0	0.0	0.0	cps
Measured Rho		0.0000	0.0000	0.0000	g/cc
Measured Correction		0.0000	0.0000	0.0000	g/cc
Measured Pe			0.0000	0.0000	

After Survey Verification

Performed Wed Dec 31 18:00:00 1969

Window 1	0.0	0.0	0.0	0.0	cps
Window 2	0.0	0.0	0.0	0.0	cps
Window 3	0.0	0.0	0.0	0.0	cps
Window 4	0.0	0.0	0.0	0.0	cps
Long Space	0.0	0.0	0.0	0.0	cps
Short Space	0.0	0.0	0.0	0.0	cps
Measured Rho		0.0000	0.0000	0.0000	g/cc
Measured Correction		0.0000	0.0000	0.0000	g/cc
Measured Pe			0.0000	0.0000	

Compensated Neutron Calibration Report

Serial Number: 070808
 Tool Model: Probe

PRE-SURVEY VERIFICATION

Detector	Readings	Measured	Target
Short Space	cps		
Long Space	cps	pu	pu

POST-SURVEY VERIFICATION

Detector	Readings	Measured	Target
Short Space	cps		
Long Space	cps	pu	pu

Gamma Ray Calibration Report

Serial Number: 070559
 Tool Model: OPEN_GR
 Performed: Sun Mar 31 10:13:29 2013

Calibrator Value:	1.0	GAPI
Background Reading:	0.0	cps
Calibrator Reading:	1.0	cps
Sensitivity:	0.3500	GAPI/cps