



**GAMMA RAY
NEUTRON
COMPLETION LOG**

Company: VIVA INTERNATIONAL, INC.
Well: GLADES #V-29
Field: VERNON
County: WOODSON
State: KANSAS

Date: 8-13-12
Run Number: 1 NW
Depth Logger: 1077.9
Top Log Interval: 0
Bottom Logged Interval: 1077.9
Fluid Level: FULL
Type Fluid: WATER
Production Casing: 2 7/8" @ TD @
Max. Recorded Temp.:
Estimated Cement Top:
Calculated Cement Top:
Amount & Type Cement:
Drilling Contractor:
Equipment Number: 109
Location: SANBORN, G.
Recorded By: WEST, T.

Company: VIVA INTERNATIONAL, INC.
Well: GLADES #V-29
Field: VERNON
County: WOODSON
State: KANSAS
Location: API #: 15-207-28250-00-00
SEC 9 TWP 24S RGE 16E
Permament Datum: 2145' FSL & 180' FEL
Log Measured From: GL
Drilling Measured From: GL
Elevation: 1057' ESK 8
D.F.: 1057' EST

Company: VIVA INTERNATIONAL, INC.
Well: GLADES #V-29
Field: VERNON
County: WOODSON
State: KANSAS
Location: API #: 15-207-28250-00-00
SEC 9 TWP 24S RGE 16E
Permament Datum: 2145' FSL & 180' FEL
Log Measured From: GL
Drilling Measured From: GL
Elevation: 1057' ESK 8
D.F.: 1057' EST

<< Fold Here >>

All interpretations are opinions based on inferences from electrical or other measurements and we cannot and do not guarantee the accuracy or correctness of any interpretation, and we shall not, except in the case of gross or willful negligence on our part, be liable or responsible for any loss, costs, damages, or expenses incurred or sustained by anyone resulting from any interpretation made by any of our officers, agents or employees. These interpretations are also subject to our general terms and conditions set out in our current Price Schedule.

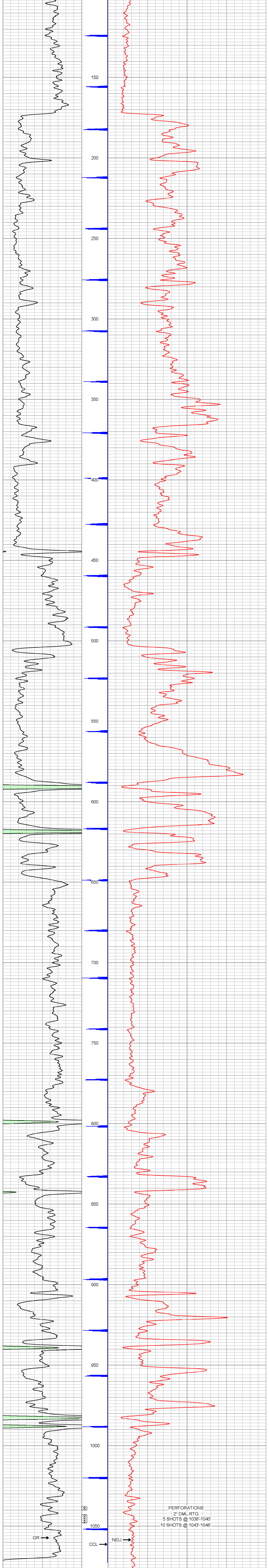
Comments

THANK YOU

Sensor	Offset (ft)	Schematic	Description	Len (ft)	OD (in)	Wt (lb)
GR	7.59		GR-TITAN_169 (TIT169_001) Titan 1 11/16" Gamma Ray	4.75	1.69	20.00
CCL	5.05		CCL-TITAN_169 (TIT169) Titan 1 11/16" Logging CCL	1.83	1.69	7.50
NEU	0.63		NEU-TITAN (TIT801) TITAN 1 11/16" Neutron	4.33	1.69	25.00

Dataset: glades #v29.db; field/well/run1/pass1
Total Length: 10.92 ft
Total Weight: 52.50 lb
O.D.: 1.69 in

Database File: g:\glades #v29.db
Dataset Pathname: pass1
Presentation Format: gr-n-ccl
Dataset Creation: Mon Aug 13 09:43:12 2012 by Log Std Casedhole 09061
Charted by: Depth in Feet scaled 1:240



PERFORATIONS
2' DML-RTG
5 SHOTS @ 1038'-1040'
10 SHOTS @ 1043'-1048'

GR → NEU →

150 gr 300.3 CCL.05 100 NEU (cps) 1800

0 GR 150

Company: VIVA INTERNATIONAL, INC.
Well: GLADES #V-29
Field: VERNON
County: WOODSON SEC. 9 TWP. 24S RGE 16E
State: KANSAS Date: 8-13-12

