



Pioneer Energy Services

Radiation Guard Log

15-195-22,840-00-00

API No.

Company Palomino Petroleum, Inc.

Well 18-2 No. 1

Field Revilo

County Trego State Kansas

Location NE NE SE NW

1,775' FNL & 2,351' FWL

Other Services
MEL

Sec: 18 Twp: 15S Rge: 25W

Permanent Datum Ground Level Elevation 2409
Log Measured From Kelly Bushing 5 Ft. Above Perm. Datum
Drilling Measured From Kelly Bushing

Elevation
K.B. 2414
D.F. 2409
G.L. 2409

Date 12/20/2012

Run Number One

Depth Driller 4440

Depth Logger 4440

Bottom Logged Interval 4439

Top Log Interval 200

Casing Driller 8.625 @ 217

Casing Logger 217

Bit Size 7.875

Type Fluid in Hole Chemical

Salinity, ppm CL 2900

Density / Viscosity 9.4 58

pH / Fluid Loss 10.0 7.6

Source of Sample Flowline

Rm @ Meas. Temp 1.0 @ 58

Rmf @ Meas. Temp .75 @ 58

Rmc @ Meas. Temp 1.35 @ 58

Source of Rmf / Rmc Charts

Rm @ BHT .48 @ 120

Operating Rig Time 4 Hours

Max Rec. Temp. F 120

Equipment Number 108

Location Hays

Recorded By J. Long

Witnessed By Kevin Bailey

<<< Fold Here >>>

All interpretations are opinions based on inferences from electrical or other measurements and we cannot and do not guarantee the accuracy or correctness of any interpretation, and we shall not, except in the case of gross or willful negligence on our part, be liable or responsible for any loss, costs, damages, or expenses incurred or sustained by anyone resulting from any interpretation made by any of our officers, agents or employees. These interpretations are also subject to our general terms and conditions set out in our current Price Schedule.

Comments

Thank you for using Log-Tech, Inc.
(785) 625-3858

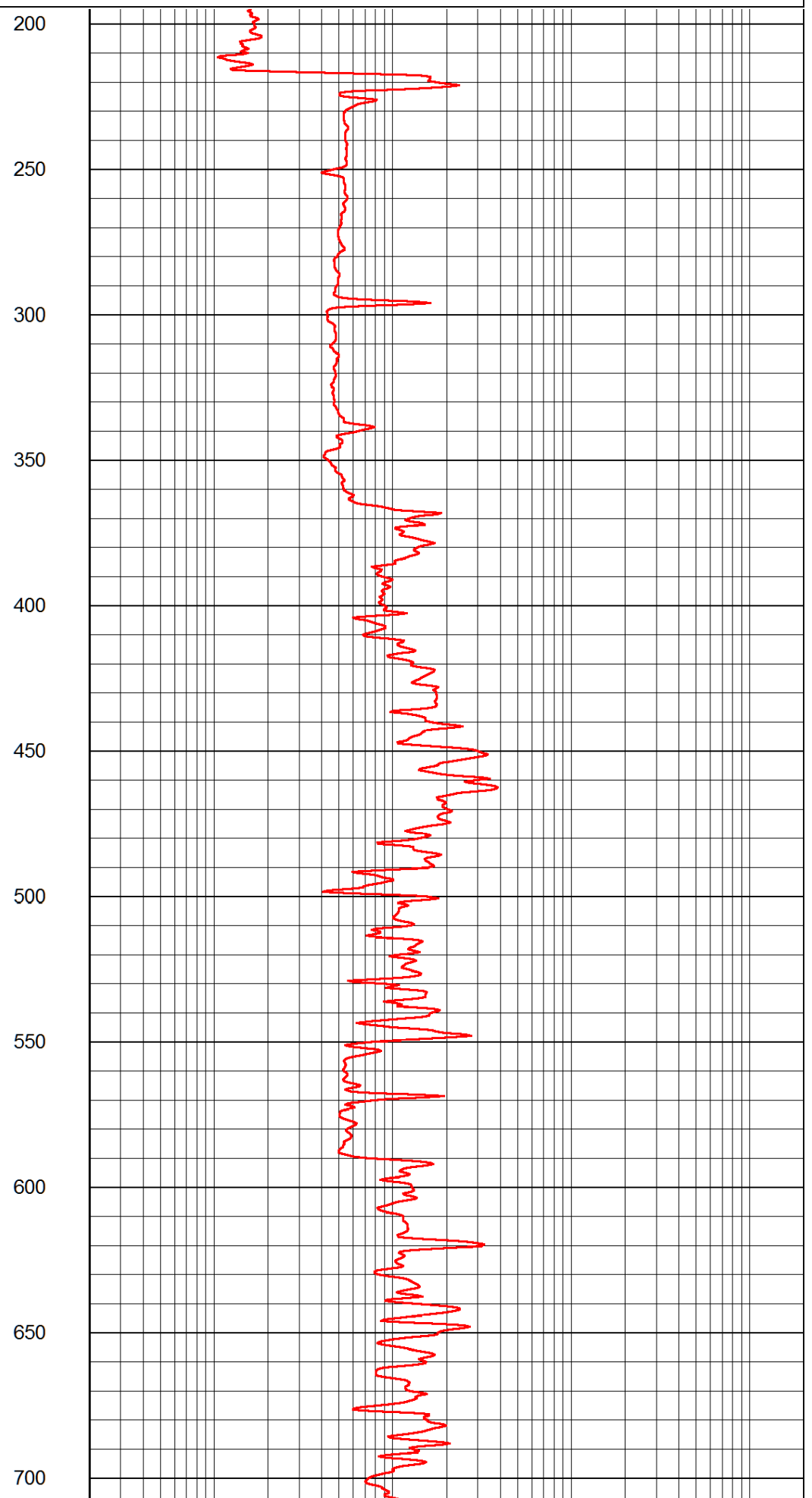
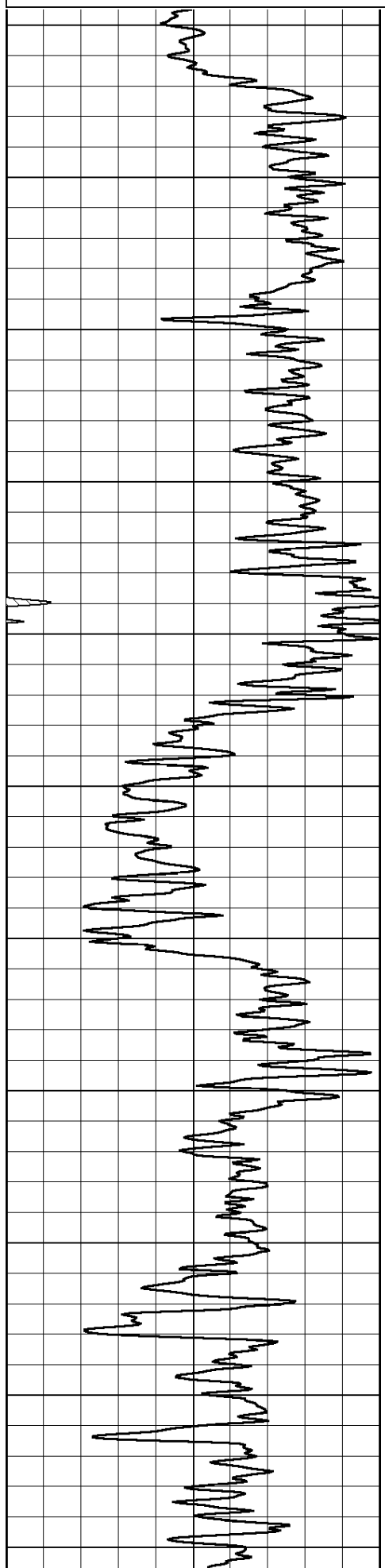
Utica, 1/2 East to E Road, 4 North to County Line, 4 North at jog in road, 1/4 East, South Into

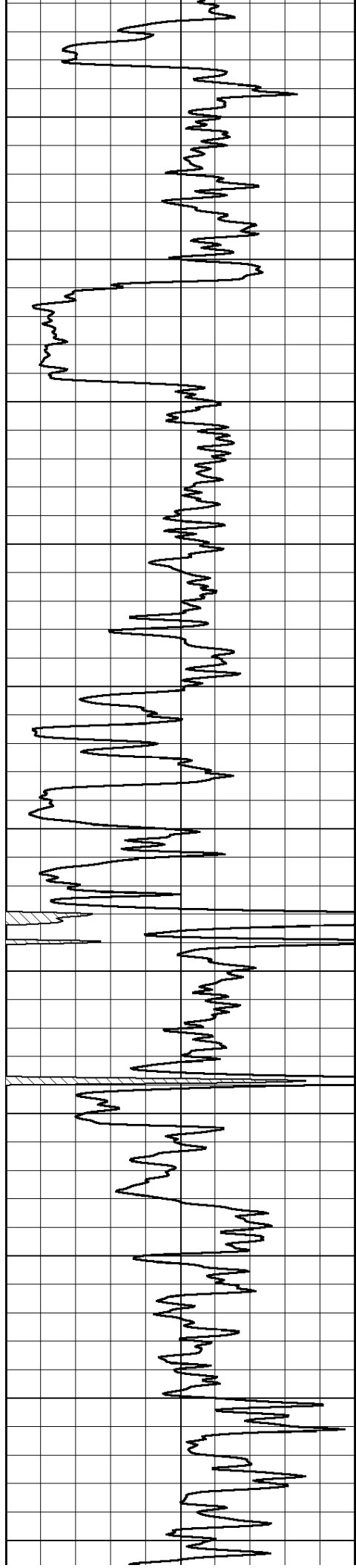
Database File: palomino_18-2_1hd.db
Dataset Pathname: rag/palorag
Presentation Format: rag2in
Dataset Creation: Thu Dec 20 13:29:49 2012
Charted by: Depth in Feet scaled 1:600

0 Gamma Ray (GAPI) 150

0.2 Igrd (Ohm-m)

2000





750

800

850

900

950

1000

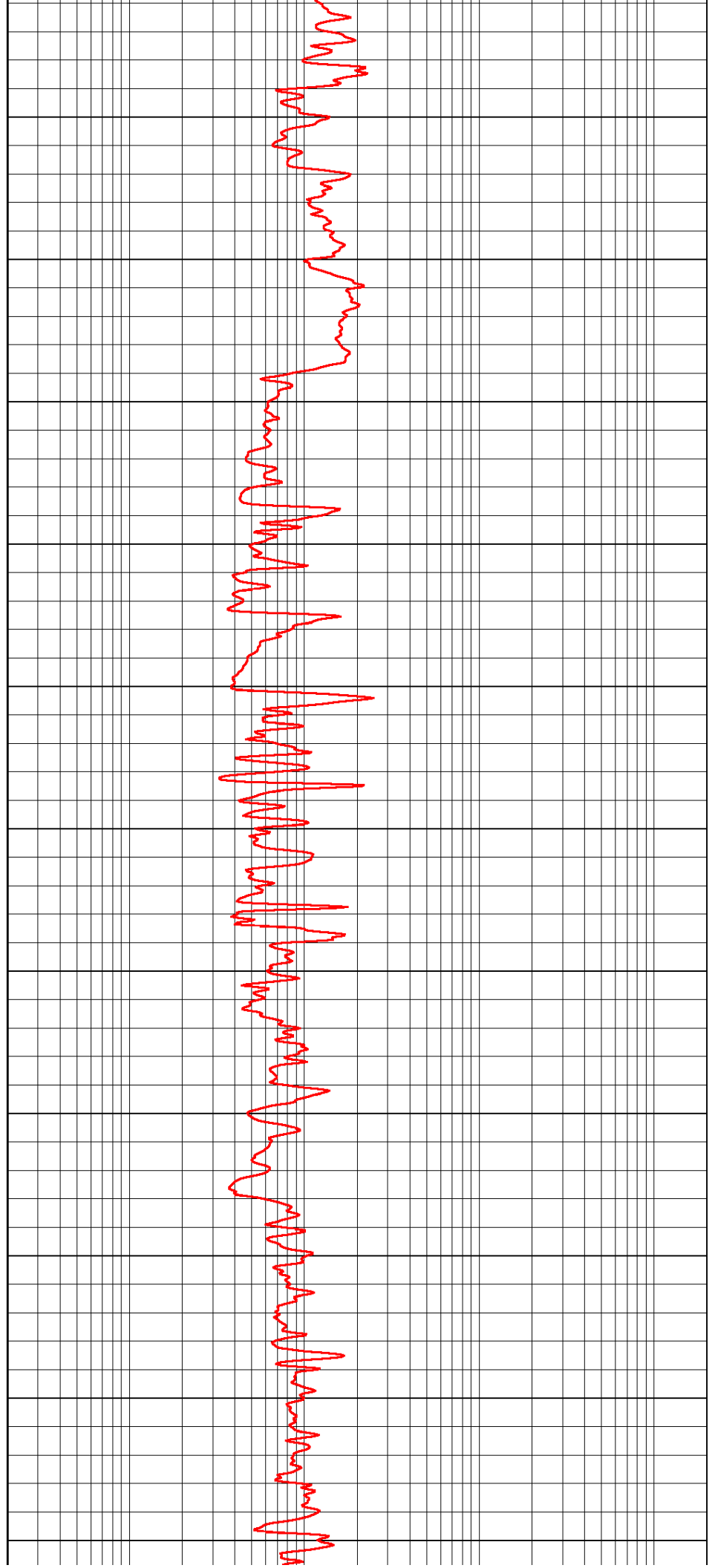
1050

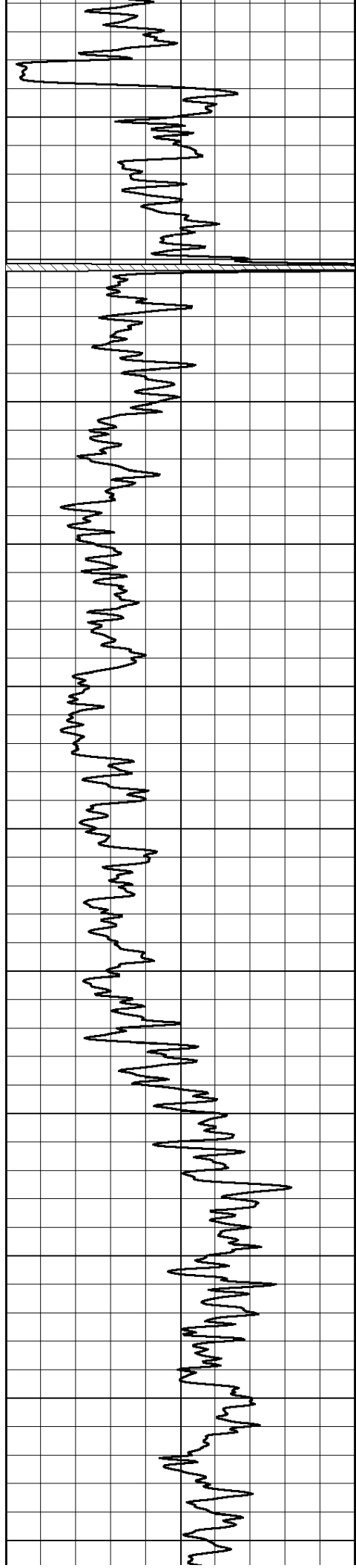
1100

1150

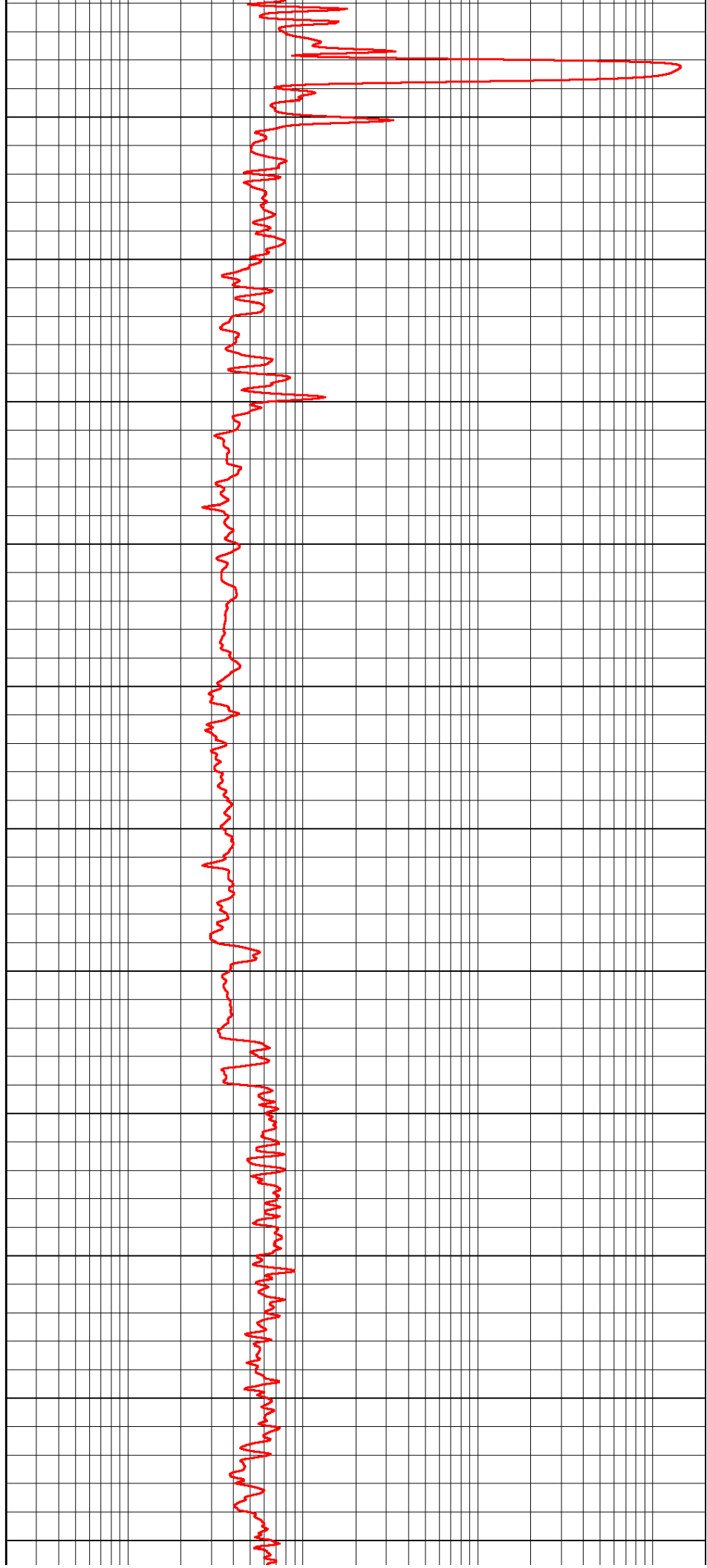
1200

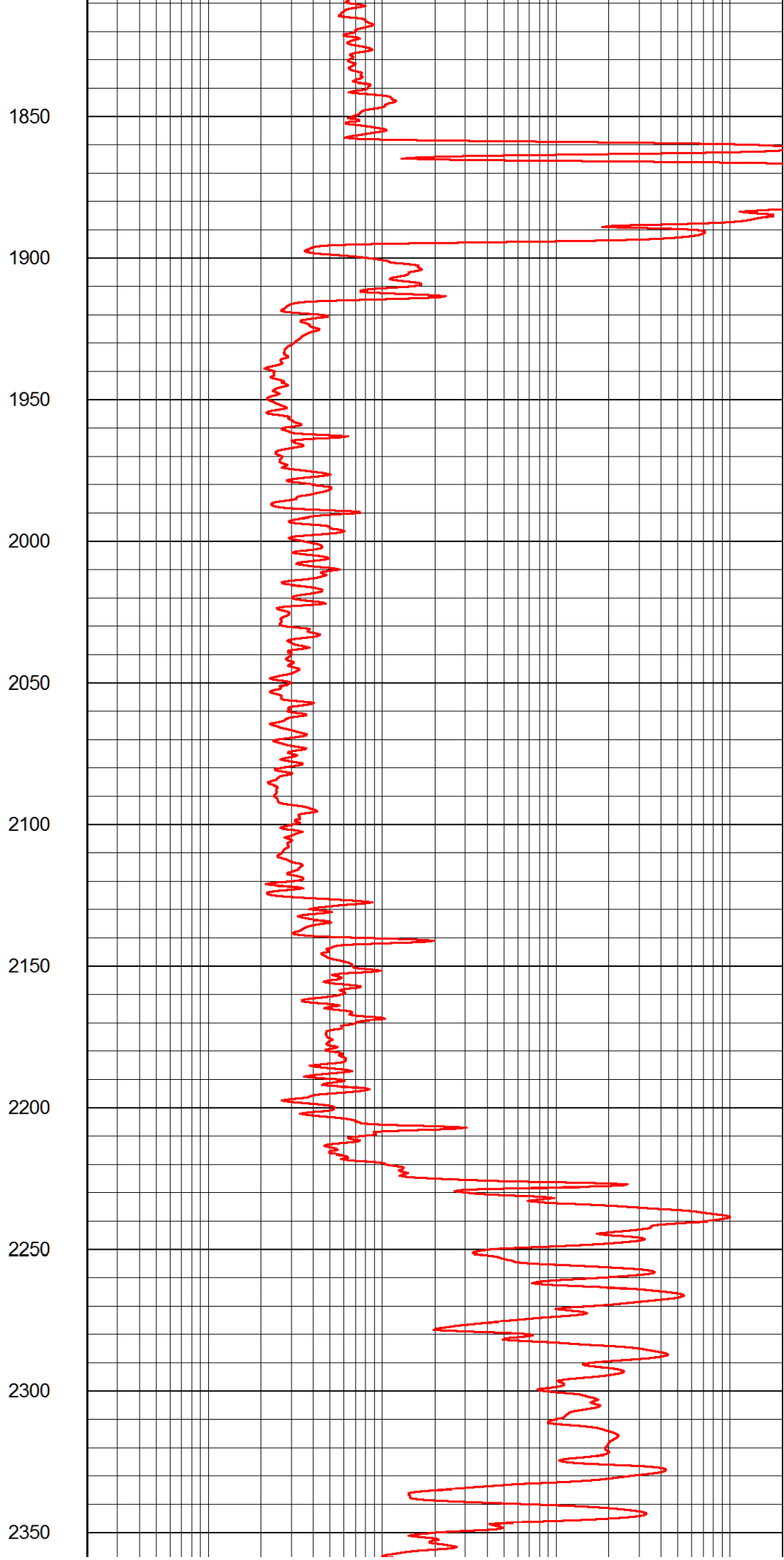
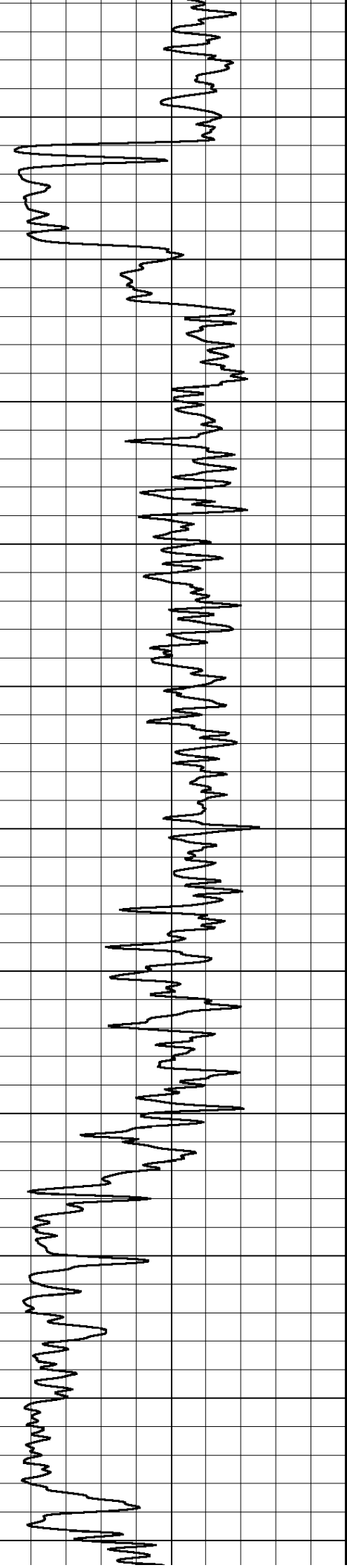
1250

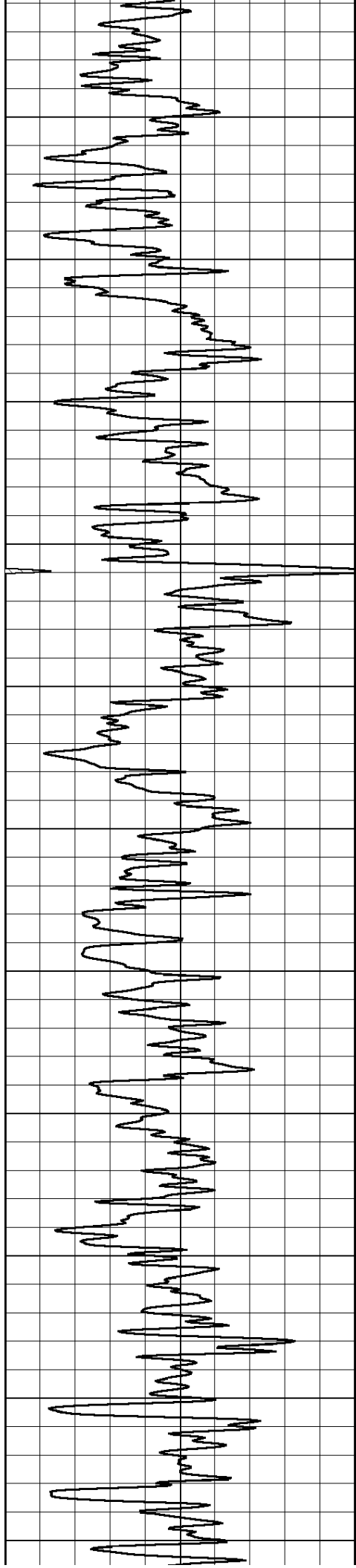




1300
1350
1400
1450
1500
1550
1600
1650
1700
1750
1800







2400

2450

2500

2550

2600

2650

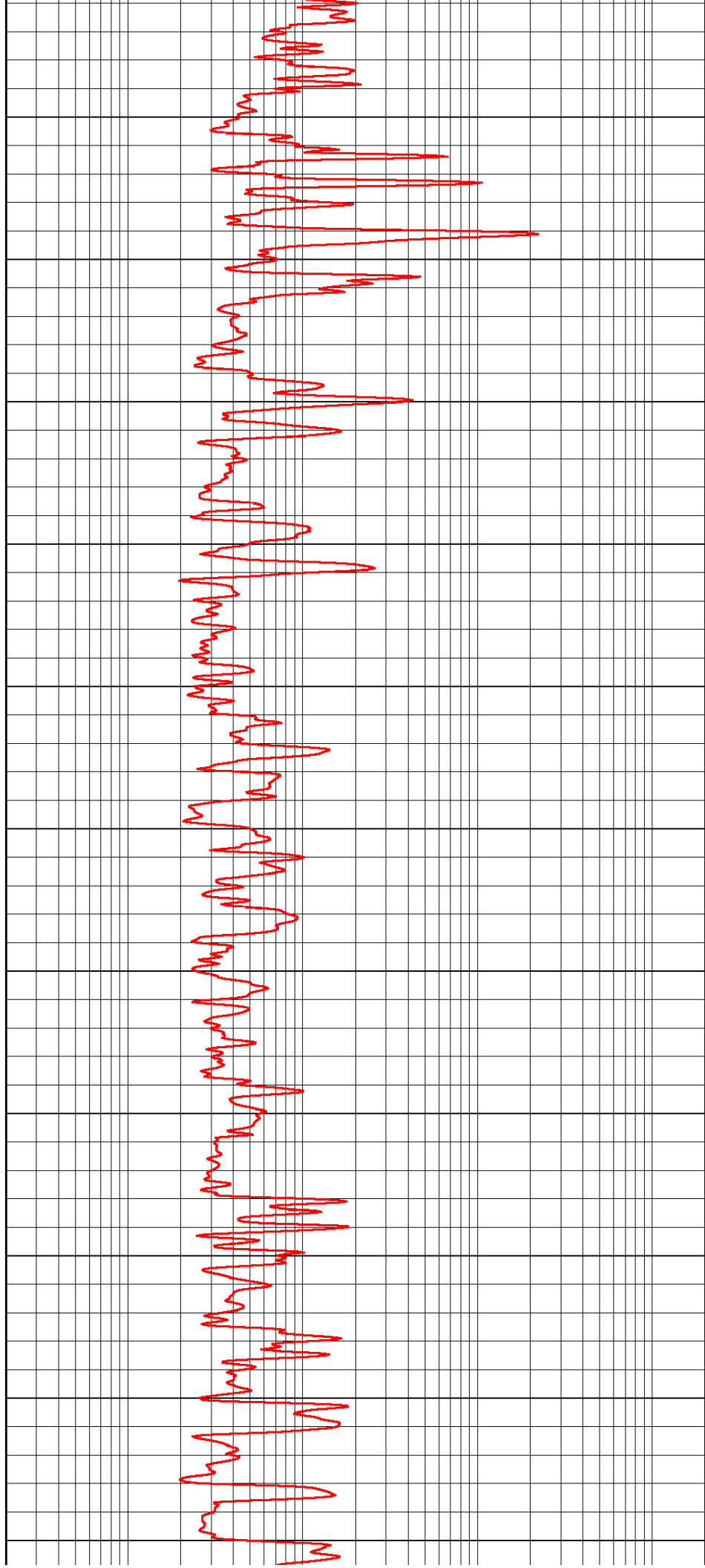
2700

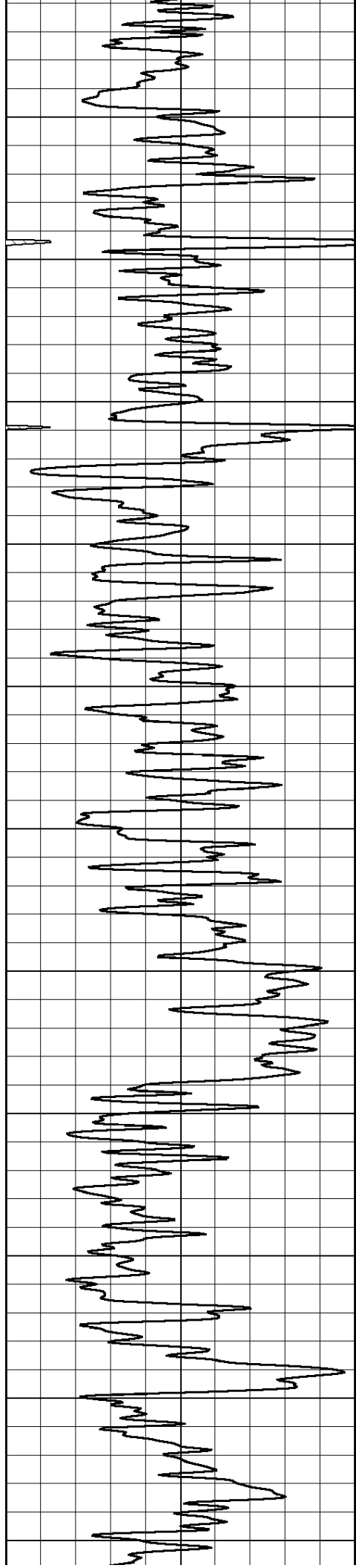
2750

2800

2850

2900





2950

3000

3050

3100

3150

3200

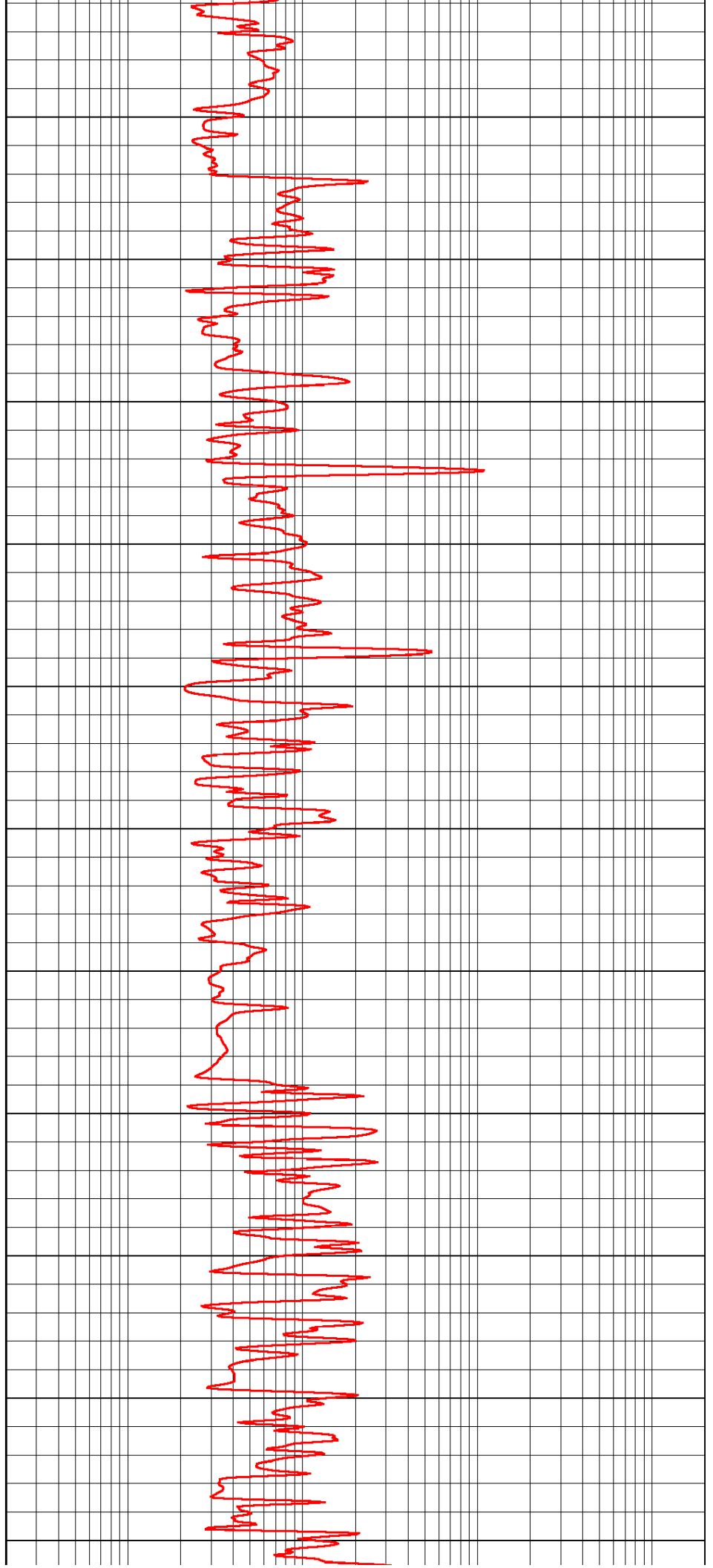
3250

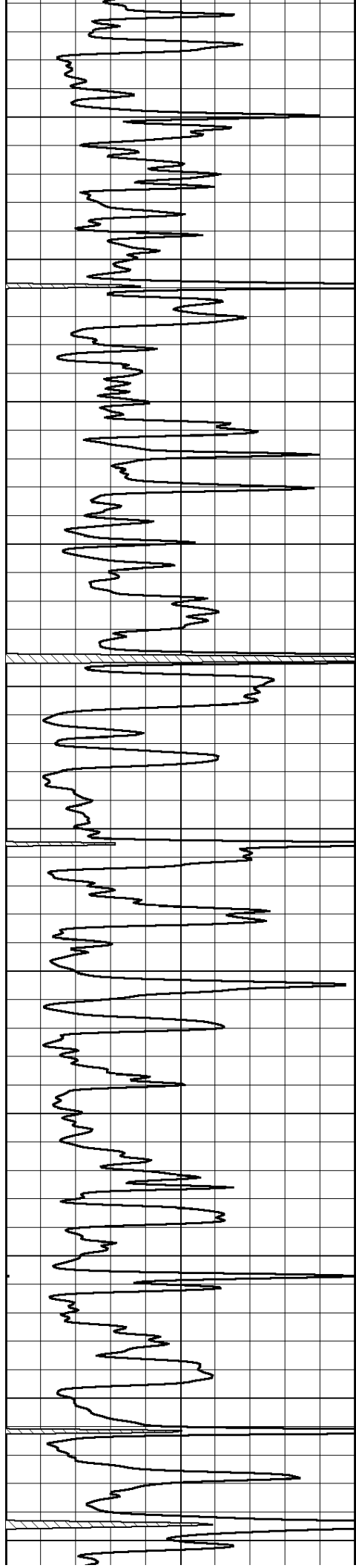
3300

3350

3400

3450





3500

3550

3600

3650

3700

3750

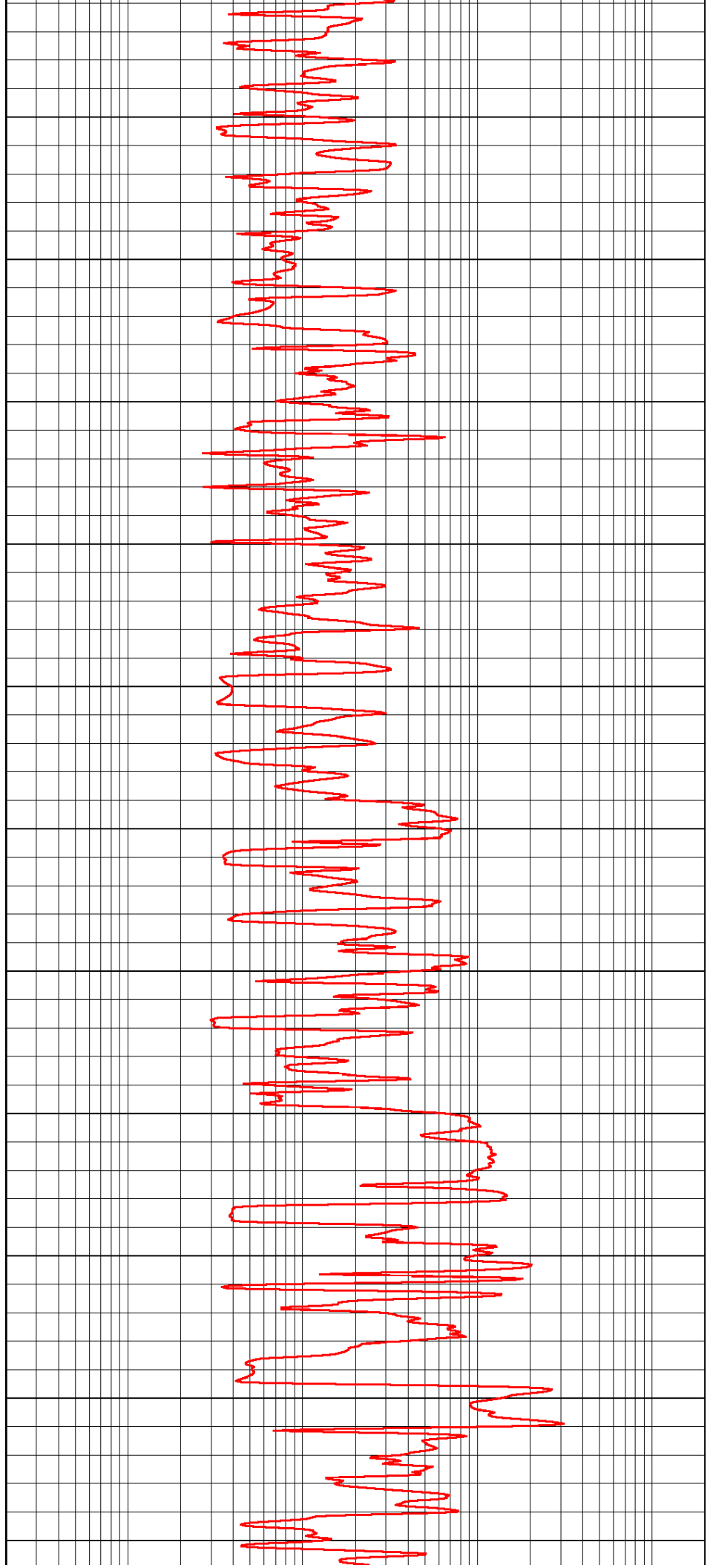
3800

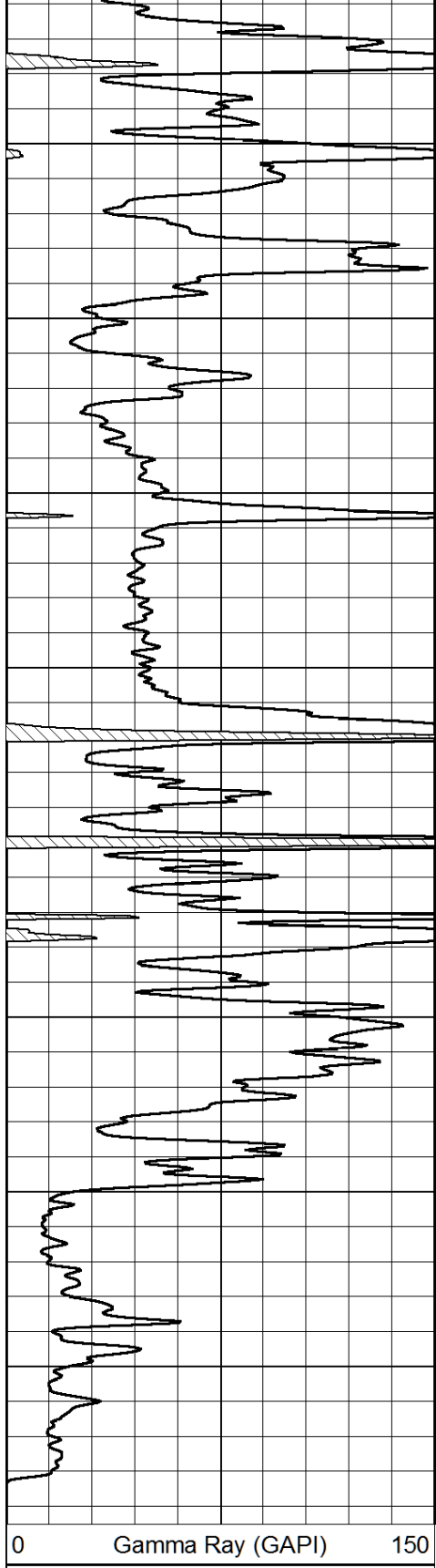
3850

3900

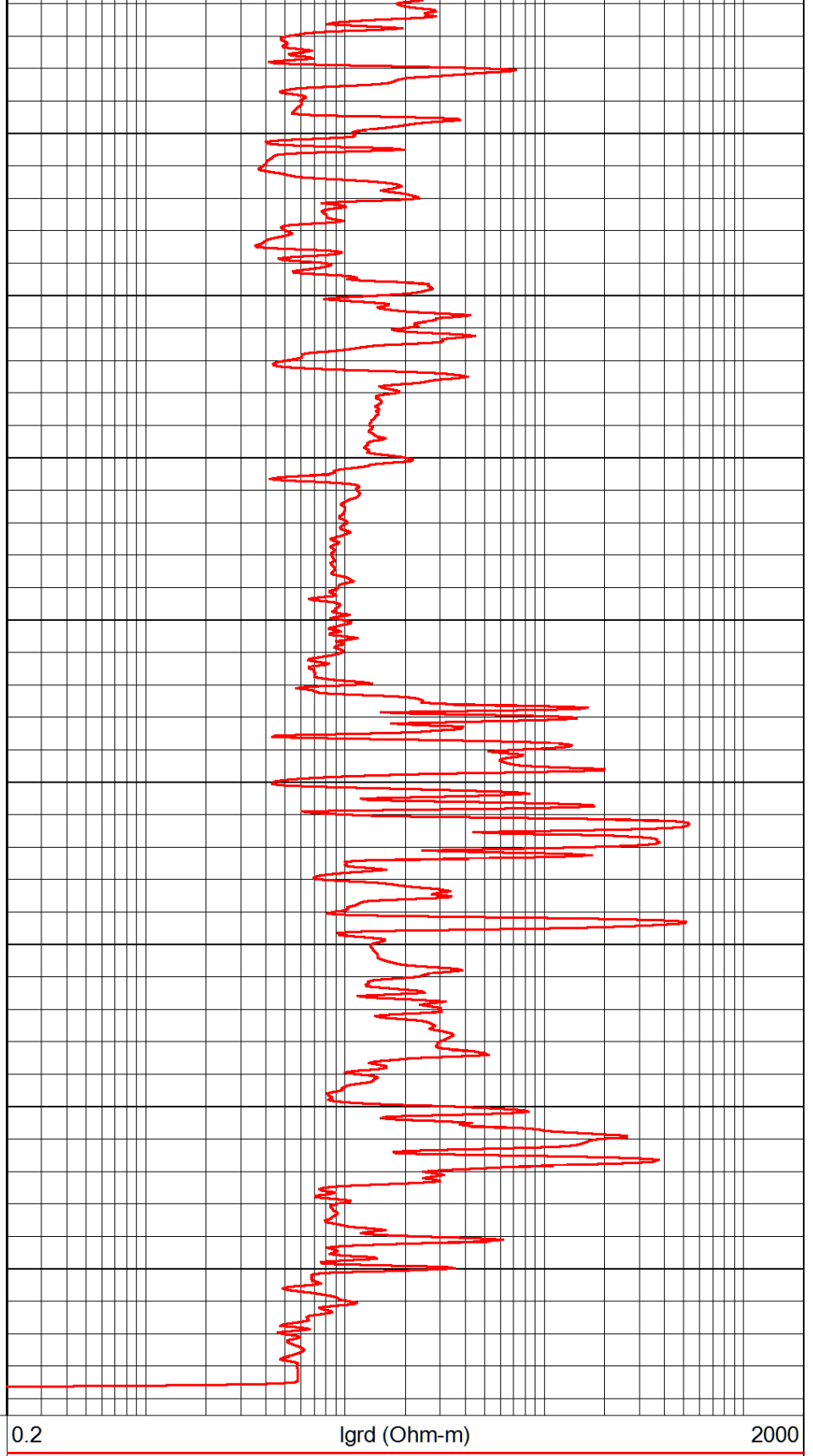
3950

4000





4050
4100
4150
4200
4250
4300
4350
4400

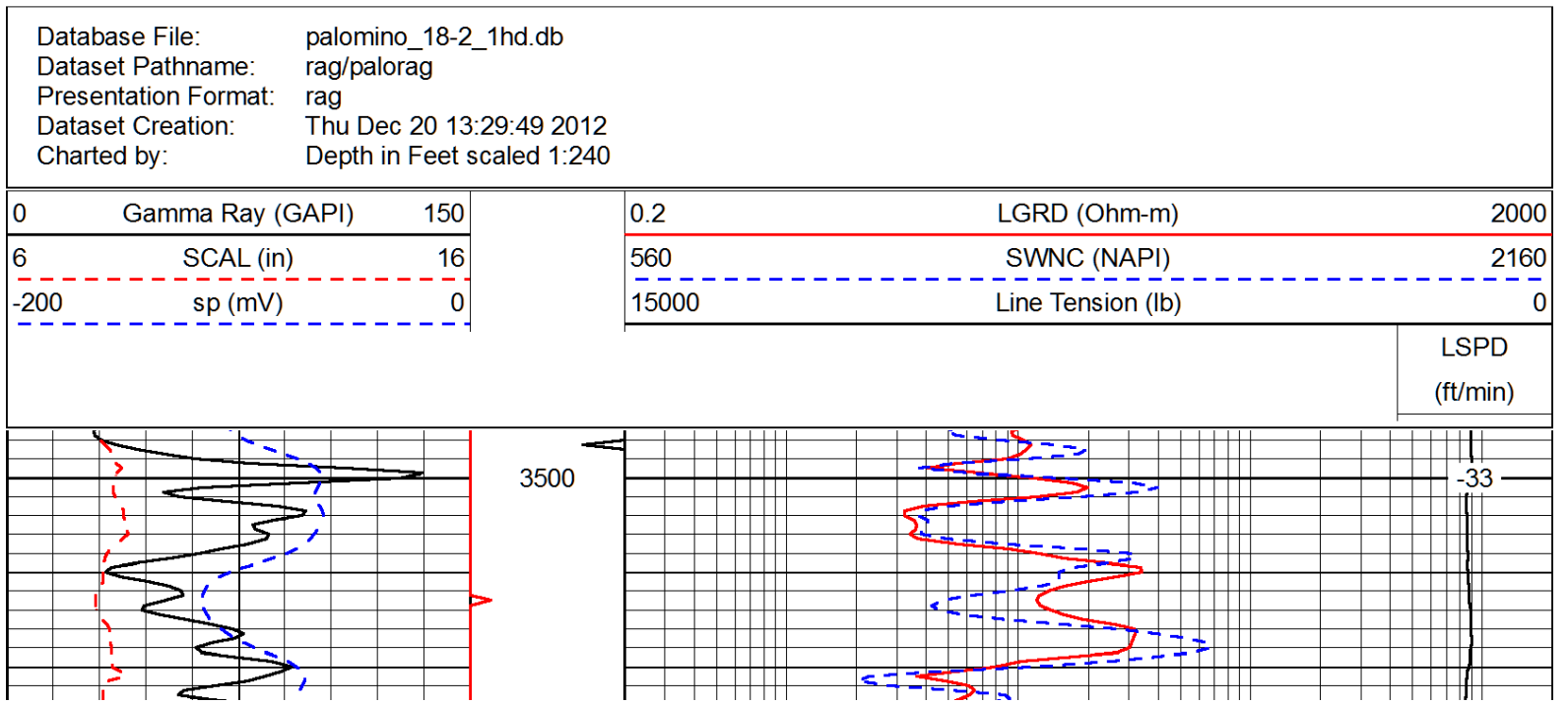
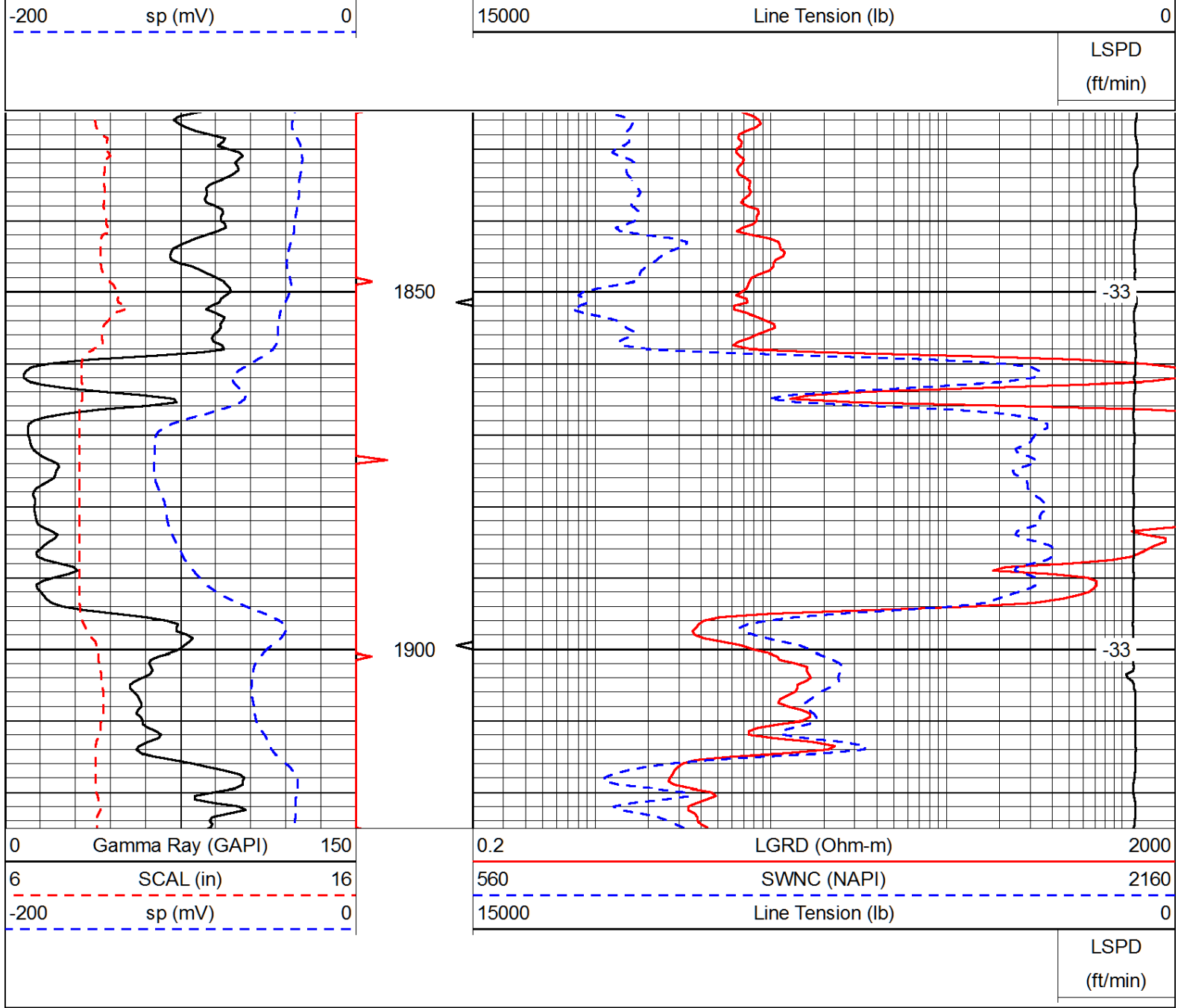


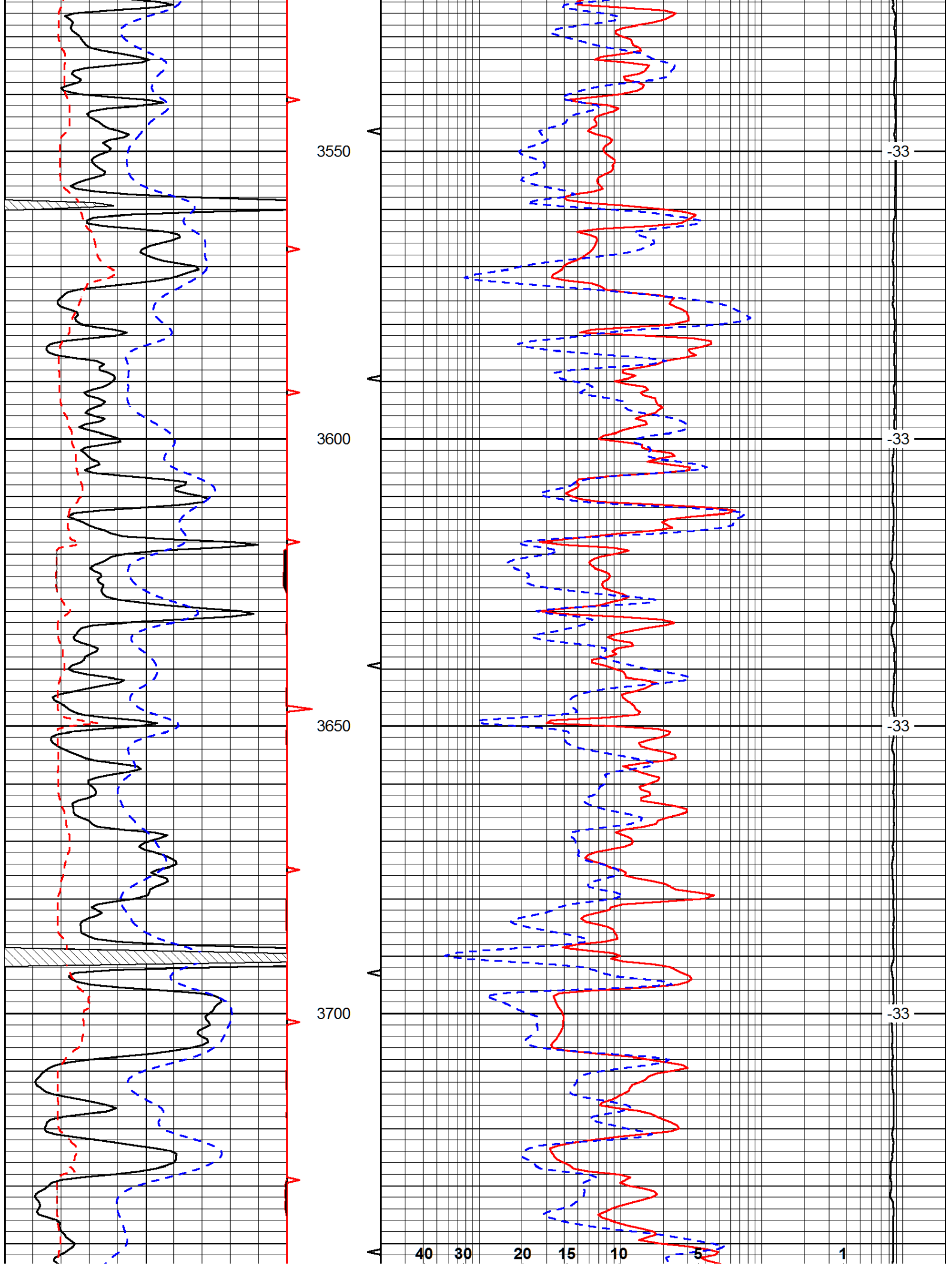
0.2 2000

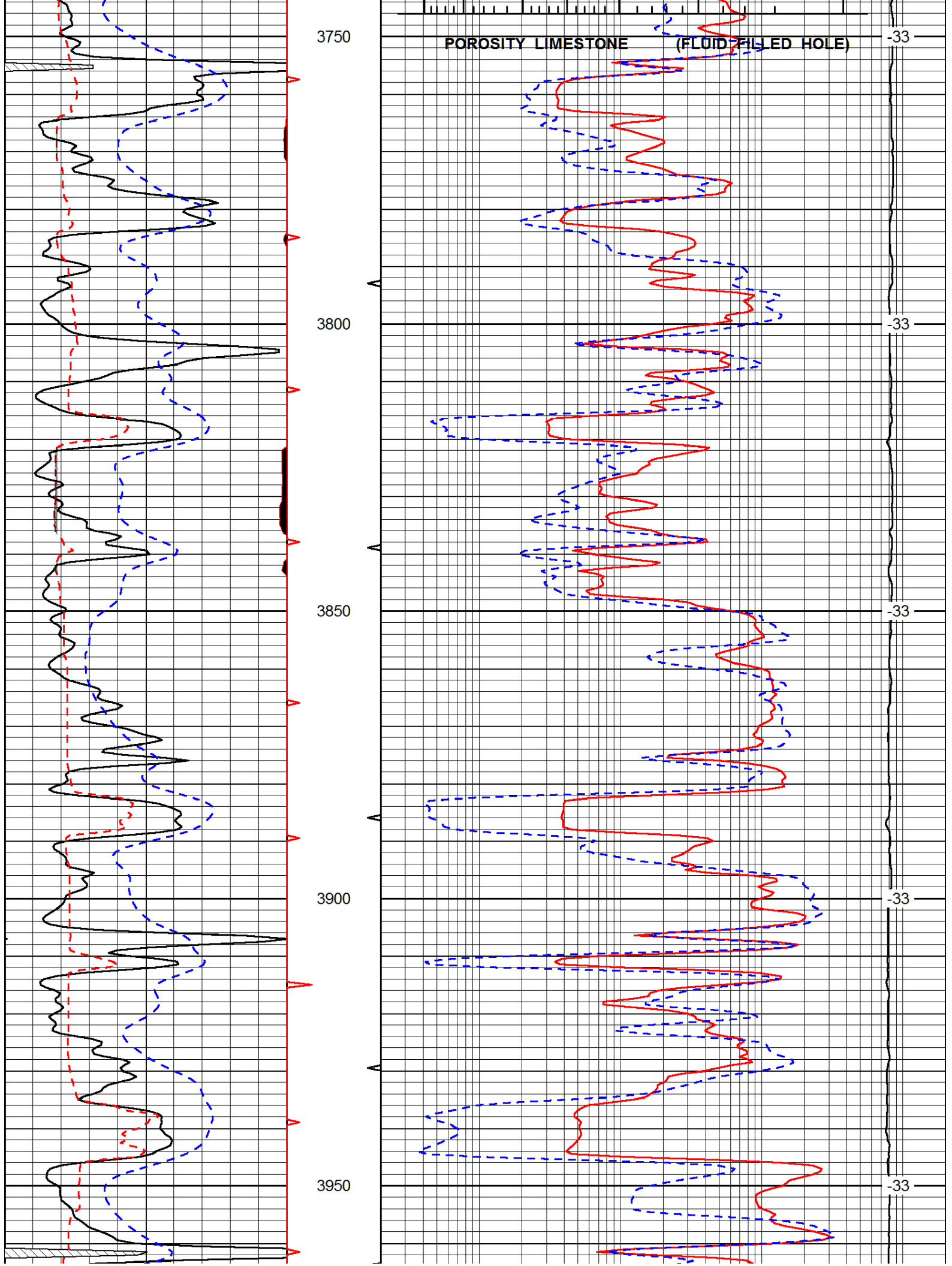
Database File: palomino_18-2_1hd.db
 Dataset Pathname: rag/palorag
 Presentation Format: rag
 Dataset Creation: Thu Dec 20 13:29:49 2012
 Charted by: Depth in Feet scaled 1:240

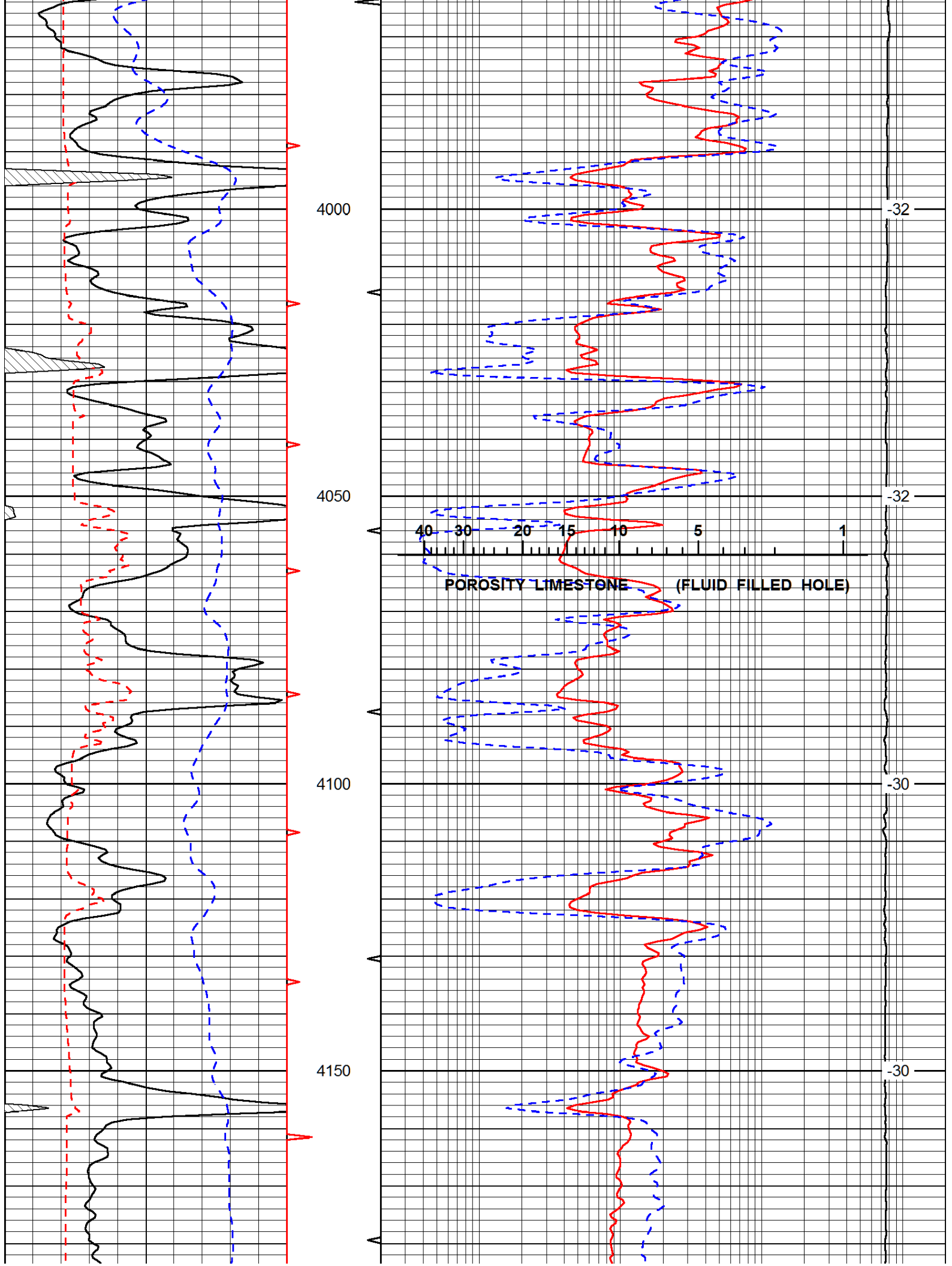
0	Gamma Ray (GAPI)	150
6	SCAL (in)	16

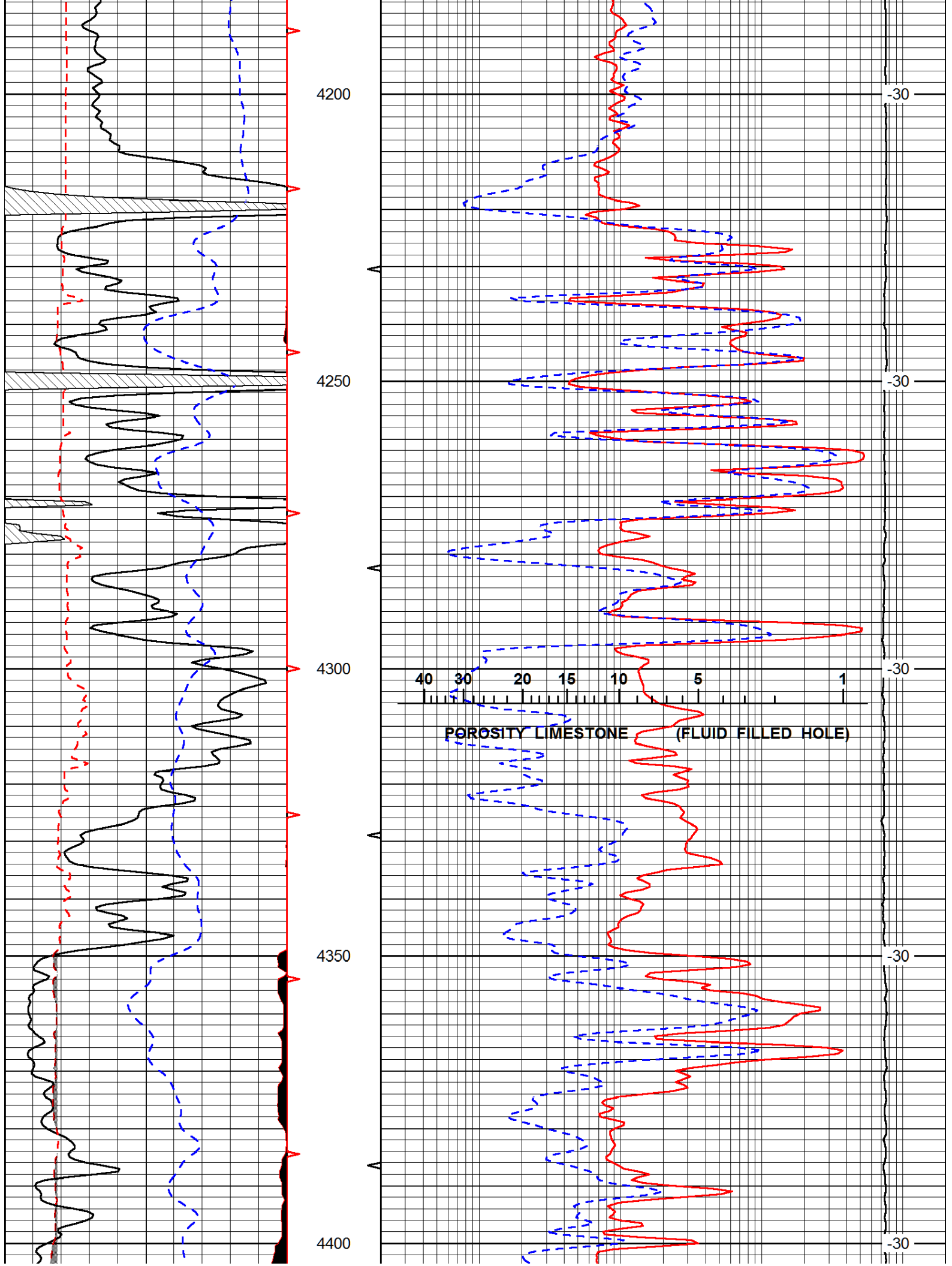
0.2	LGRD (Ohm-m)	2000
560	SWNC (NAPI)	2160

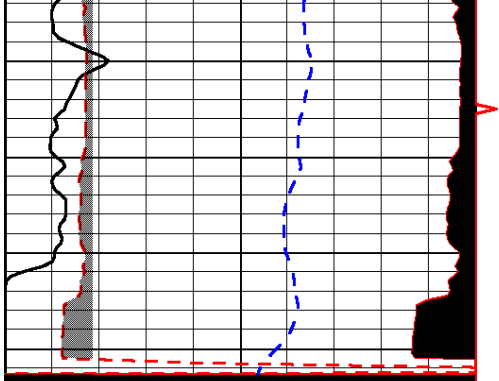




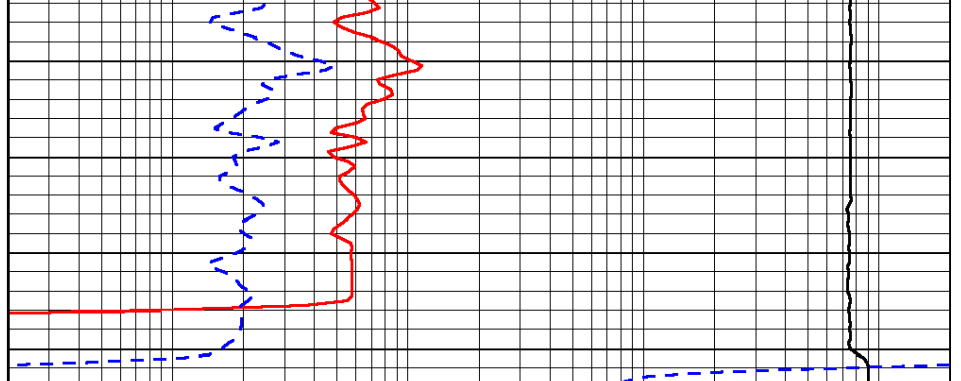








0	Gamma Ray (GAPI)	150
6	SCAL (in)	16
-200	sp (mV)	0



0.2	LGRD (Ohm-m)	2000
560	SWNC (NAPI)	2160
15000	Line Tension (lb)	0

LSPD (ft/min)
