



Pioneer Energy Services

Dual Induction Log

API No.	15-159-22,179-00-00		
Company	American Warrior, Inc.		
Well	Vokland No.1-32		
Field	Chase-Silica		
County	Rice	State	Kansas
Location	1416' FSL & 2544' FEL		
Sec: 32	Twp: 18S	Rge: 9W	Other Services CNL/CDL

Permanent Datum	Ground Level	Elevation 1718	K.B. 1726
Log Measured From	Kelly Bushing	8 Ft. Above Perm. Datum	D.F. 1718
Drilling Measured From	Kelly Bushing		G.L. 1718
Date	12/17/2012		
Run Number	One		
Depth Driller	3255		
Depth Logger	3230		
Bottom Logged Interval	3229		
Top Log Interval	300		
Casing Driller	8.625 @ 332		
Casing Logger	328		
Bit Size	7.875		
Type Fluid in Hole	Chemical		
Salinity,ppm CL	5.700		
Density / Viscosity	9.15	48	
pH / Fluid Loss	11.0	7.2	
Source of Sample	Flowline		
Rm @ Meas. Temp	.6	@ 48	
Rmf @ Meas. Temp	.45	@ 48	
Rmc @ Meas. Temp	.81	@ 48	
Source of Rmf / Rmc	Charts		
Rm @ BHT	.26	@ 111	
Operating Rig Time	2 Hours		
Max Rec. Temp. F	111		
Equipment Number	10		
Location	Hays		
Recorded By	C. Desaire		
Witnessed By	Kurt Talbott		

<<< Fold Here >>>

All interpretations are opinions based on inferences from electrical or other measurements and we cannot and do not guarantee the accuracy or correctness of any interpretation, and we shall not, except in the case of gross or willful negligence on our part, be liable or responsible for any loss, costs, damages, or expenses incurred or sustained by anyone resulting from any interpretation made by any of our officers, agents or employees. These interpretations are also subject to our general terms and conditions set out in our current Price Schedule.

Comments

Thank you for using Log-Tech, Inc.
(785) 625-3858

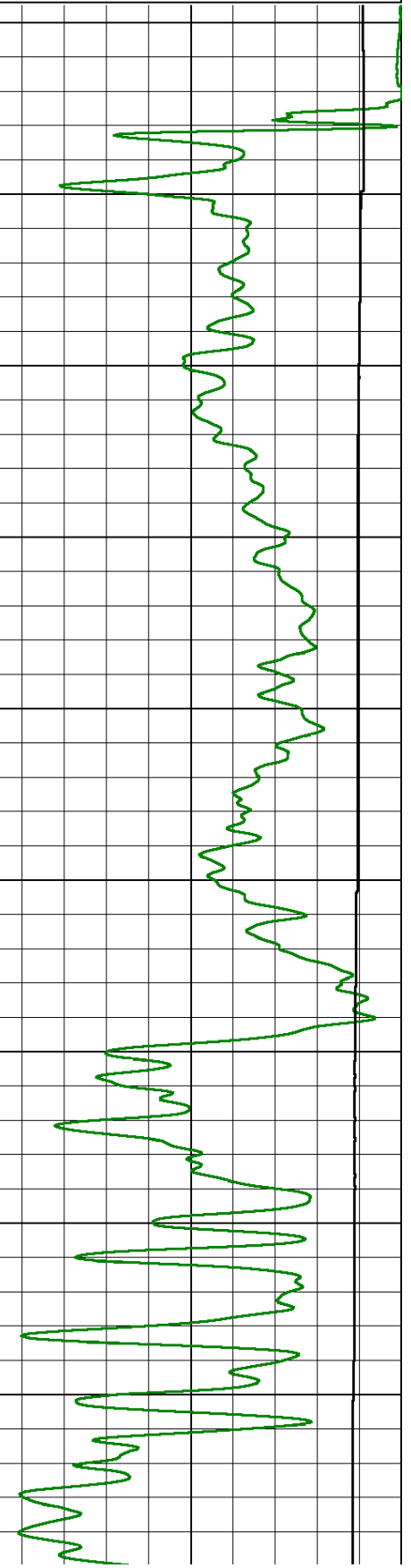
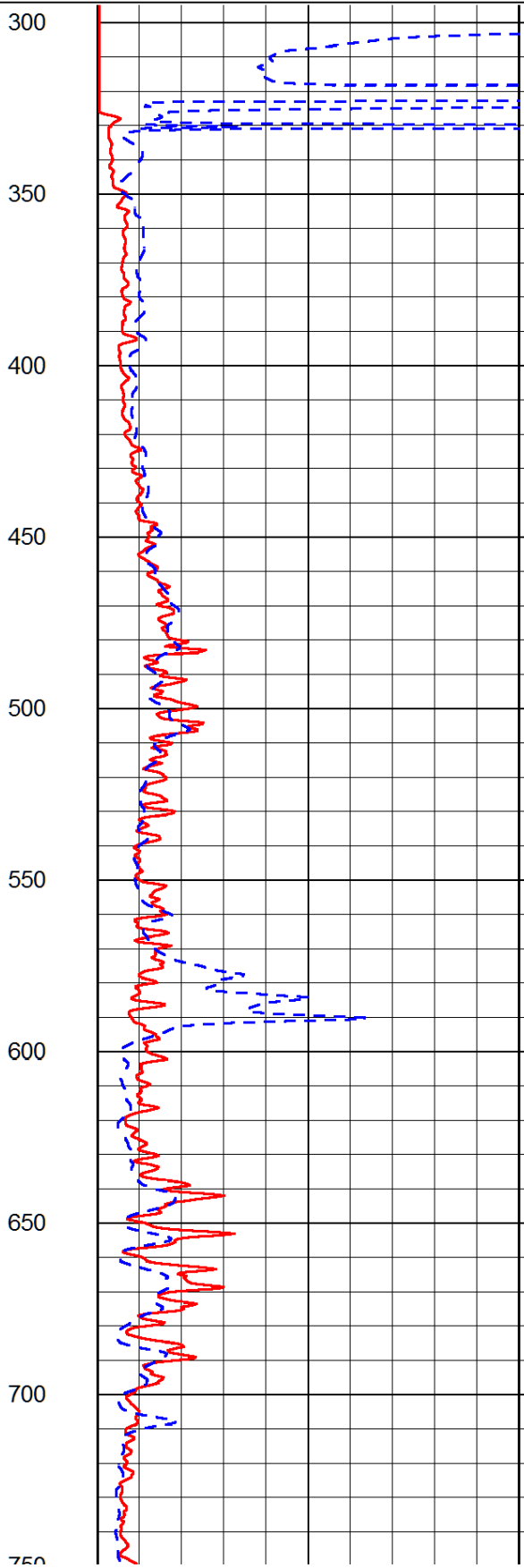
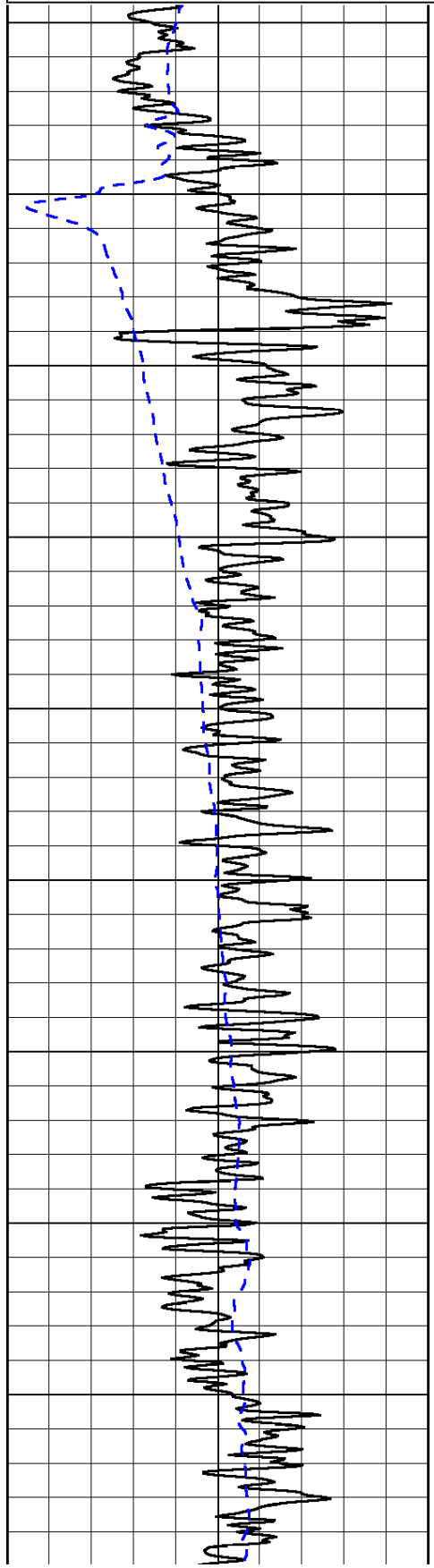
Chase KS, 4 N, 1/2 E, N Into

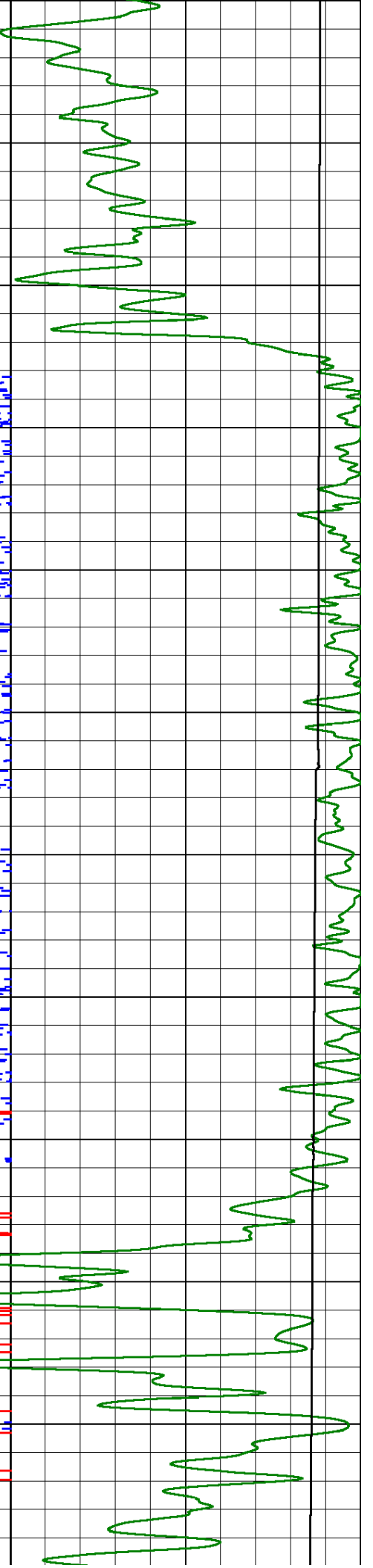
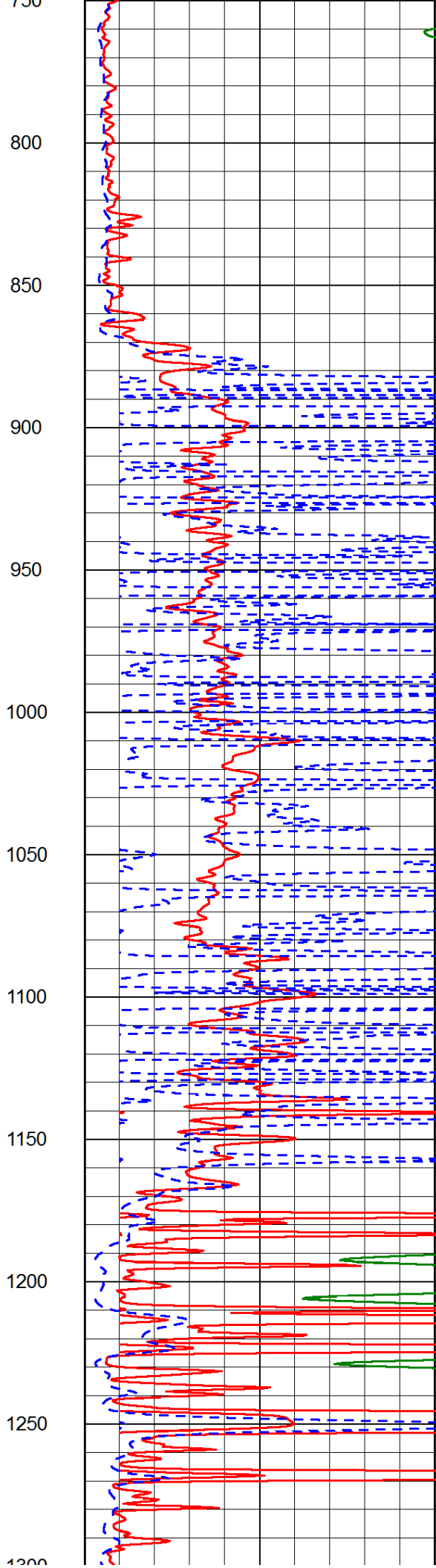
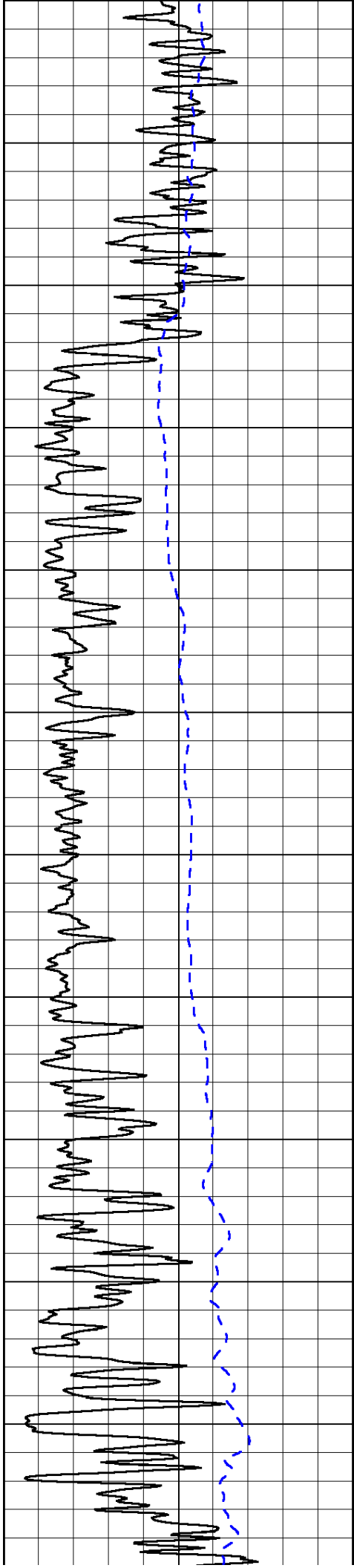
0	Gamma Ray (GAPI)	150
-200	SP (mV)	0

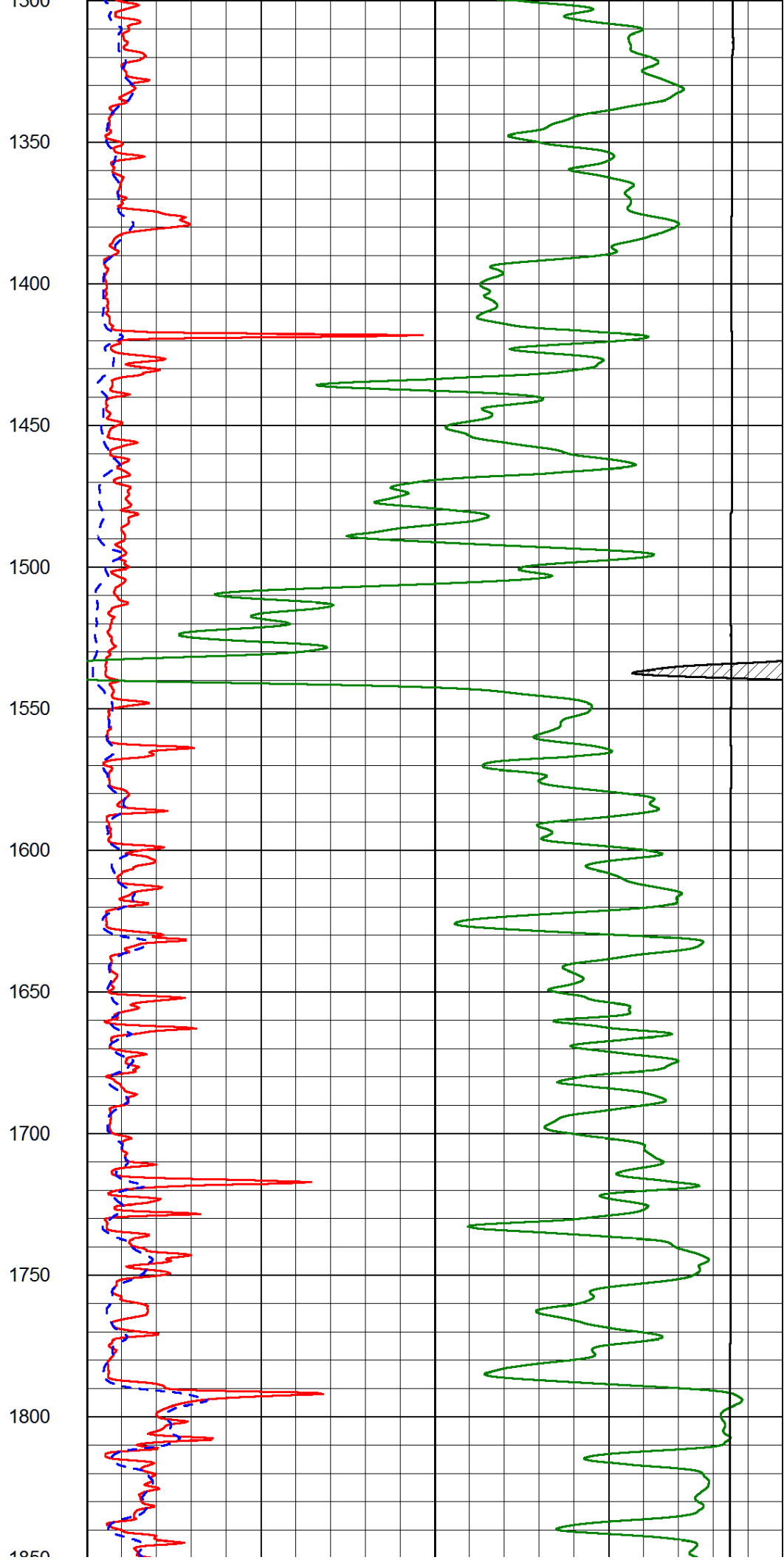
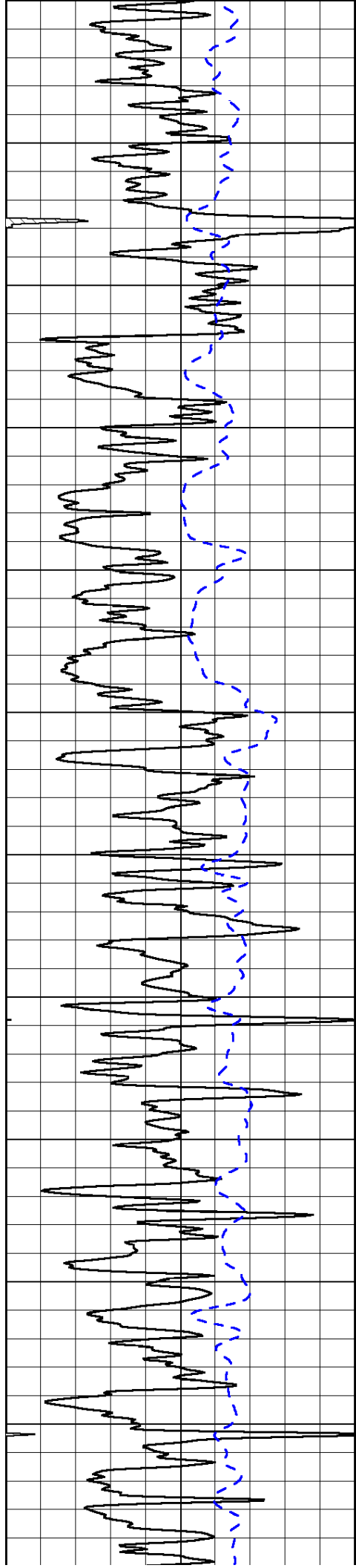
0	Shallow Resistivity (Ohm-m)	50
0	Deep Resistivity (Ohm-m)	50

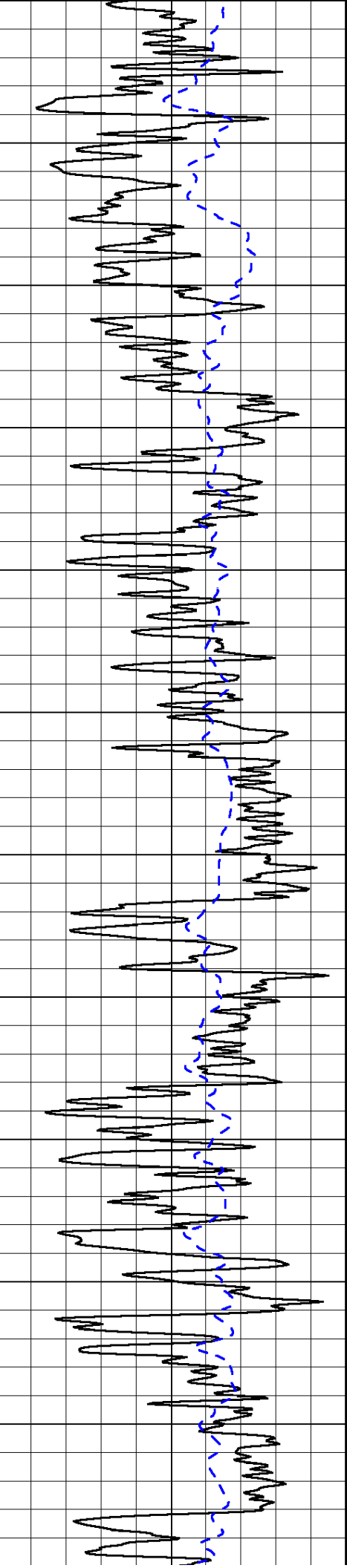
1000	Conductivity (Ohm-m)	0
15000	Line Tension (lb)	0

Shallow Resistivity		
50	(Ohm-m)	500
50	Deep Resistivity (Ohm-m)	500

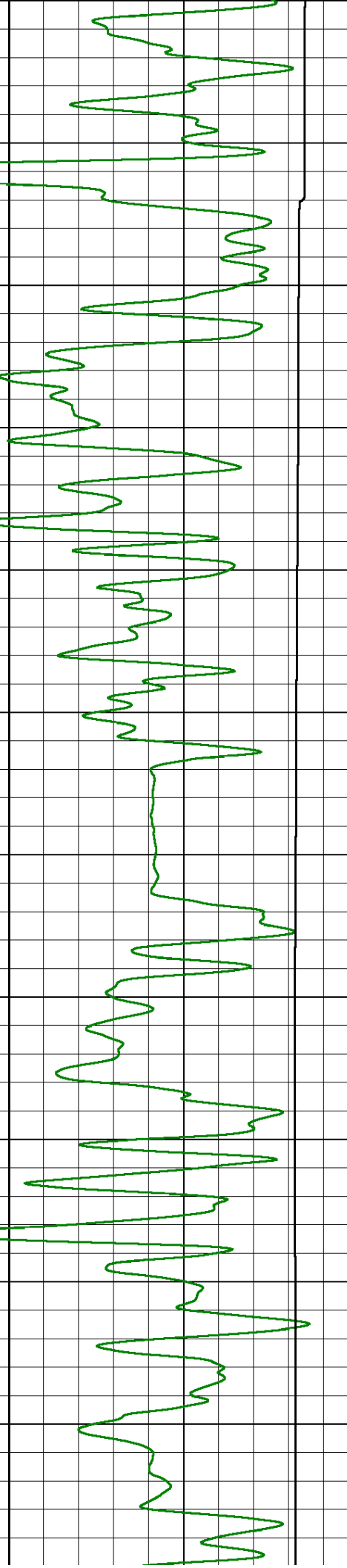
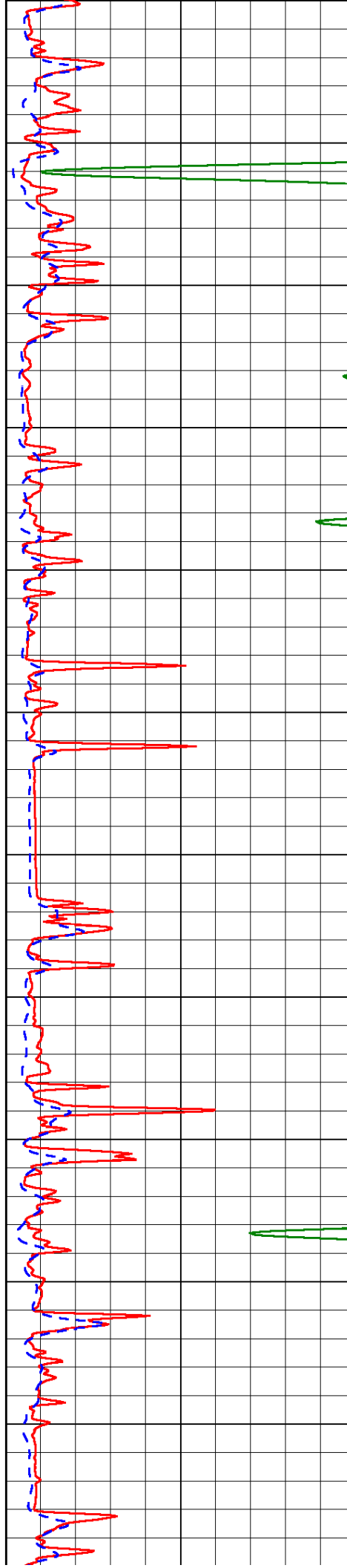


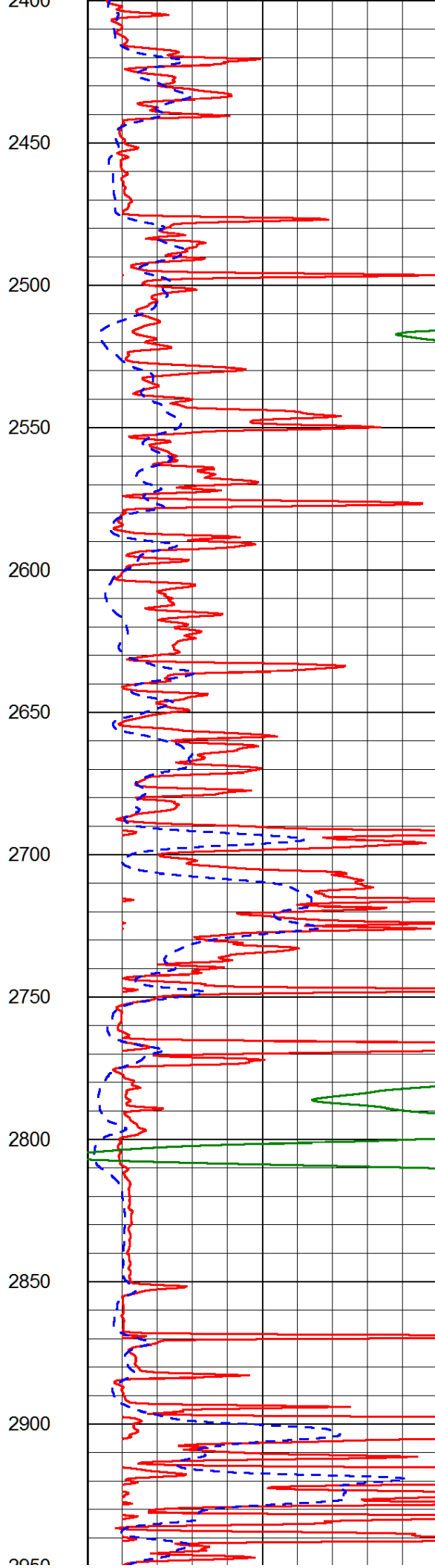
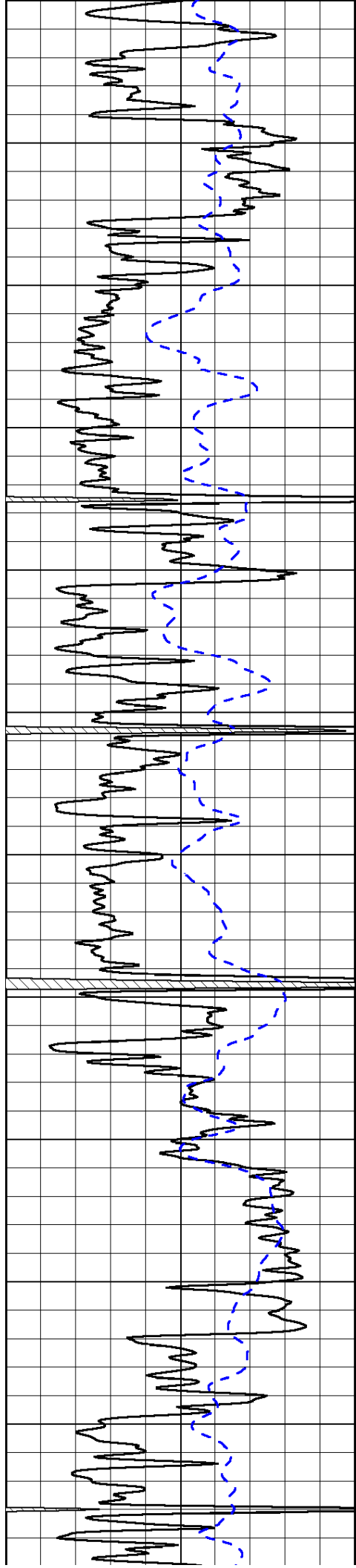


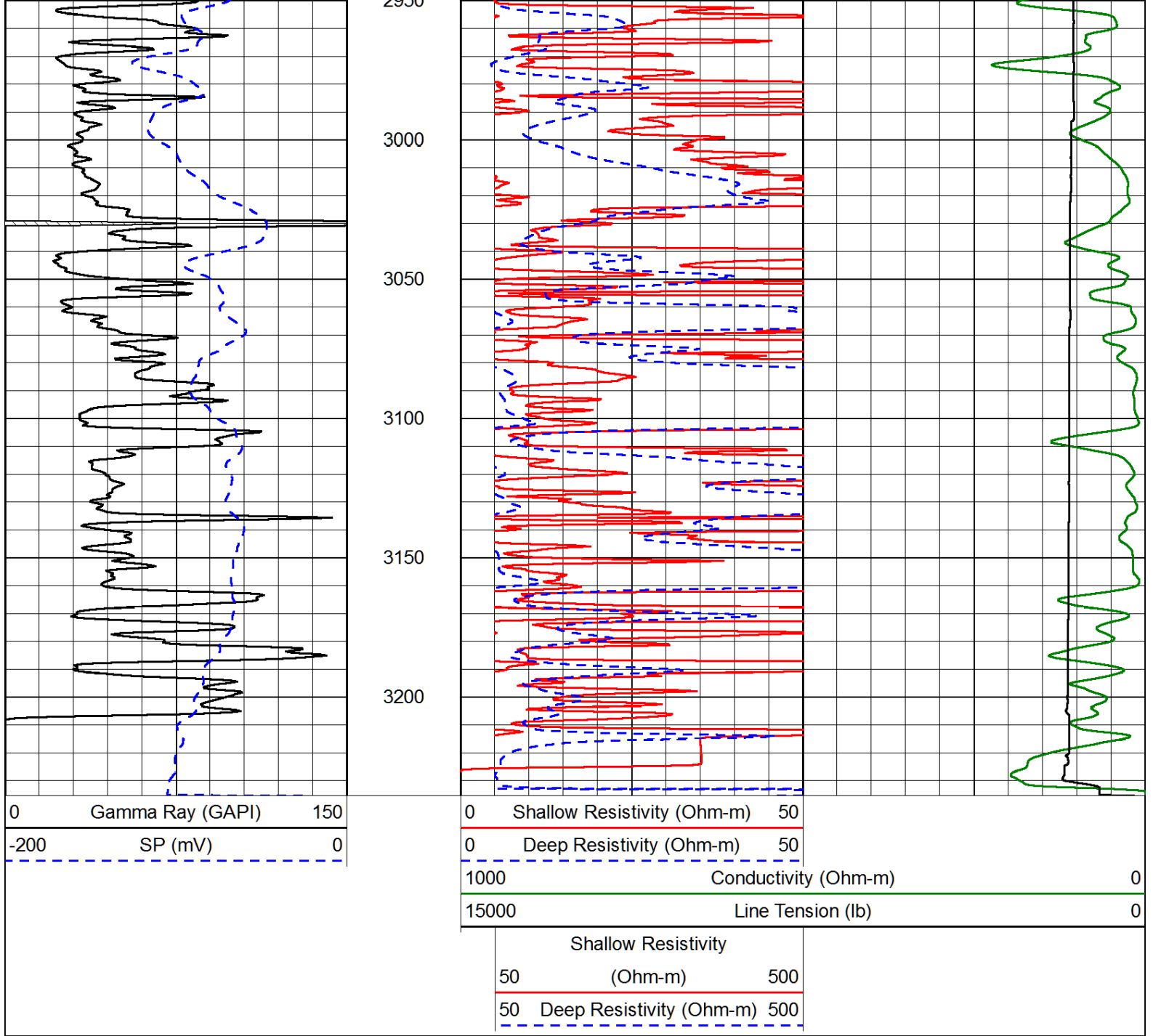




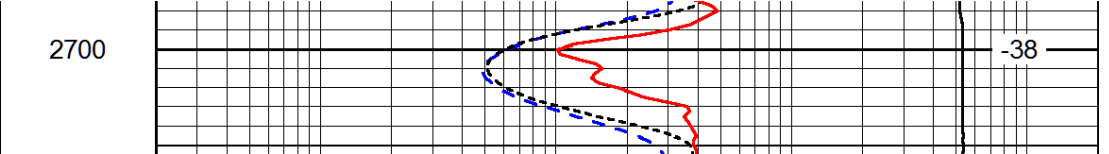
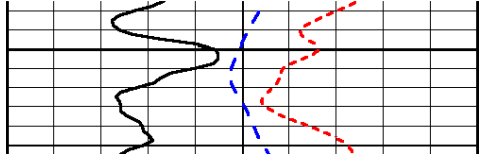
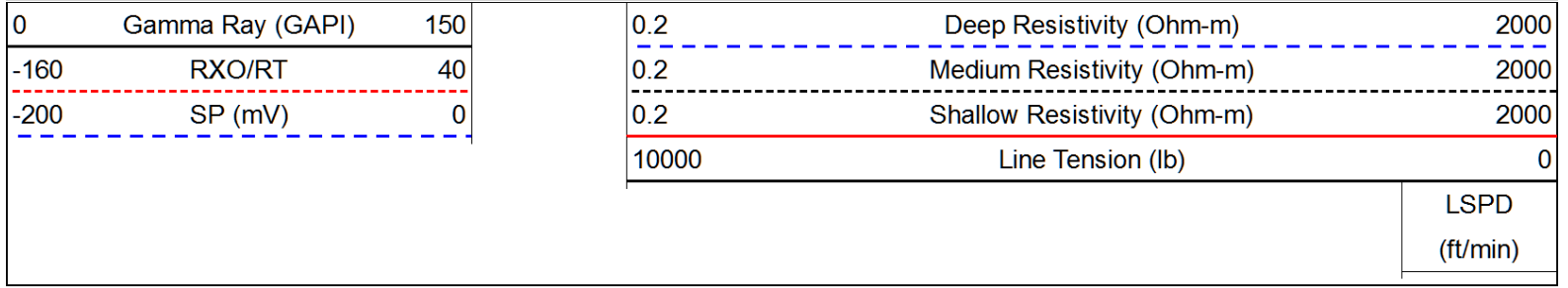
1850
1900
1950
2000
2050
2100
2150
2200
2250
2300
2350
2400

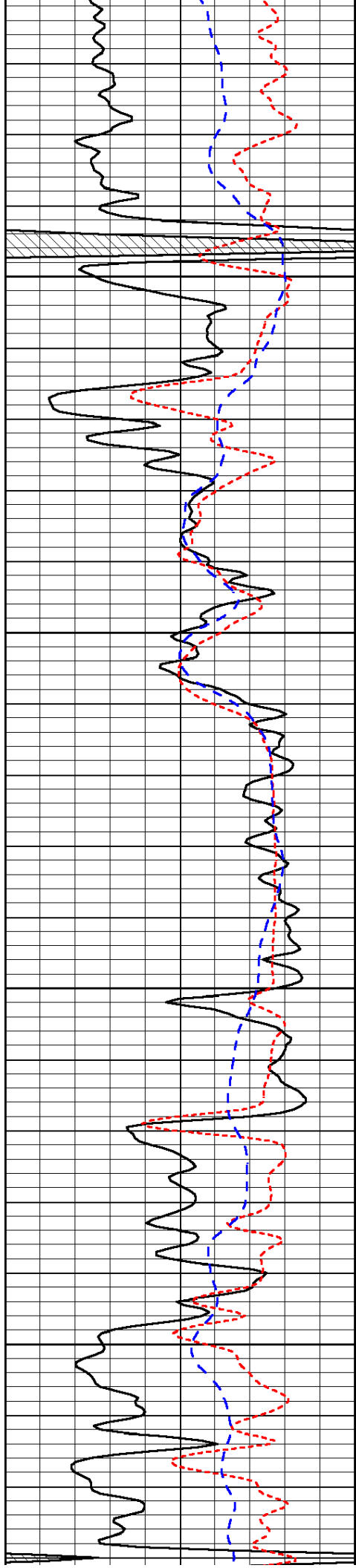






Database File: amwarriorhd.db
 Dataset Pathname: dil/awstk
 Presentation Format: dil
 Dataset Creation: Mon Dec 17 10:39:32 2012
 Charted by: Depth in Feet scaled 1:240



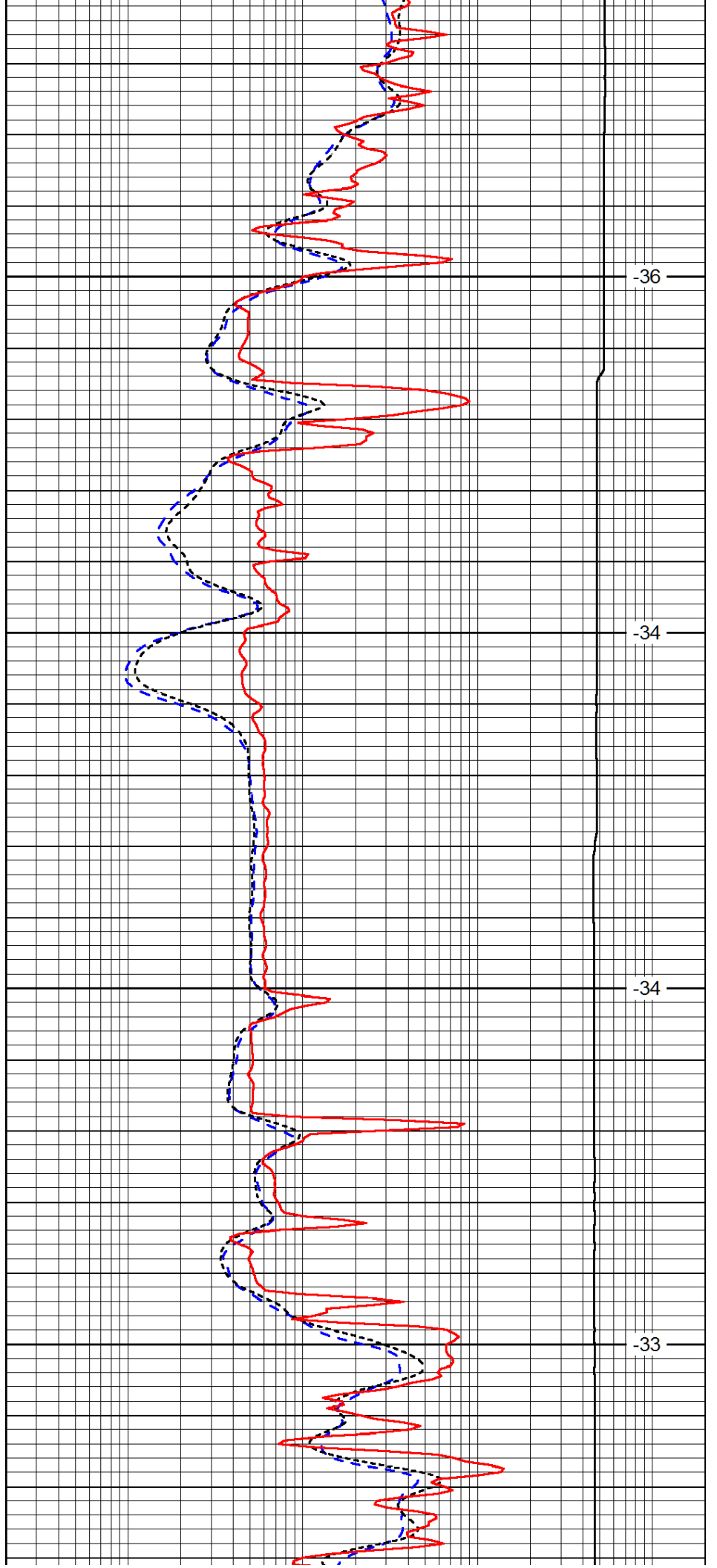


2750

2800

2850

2900

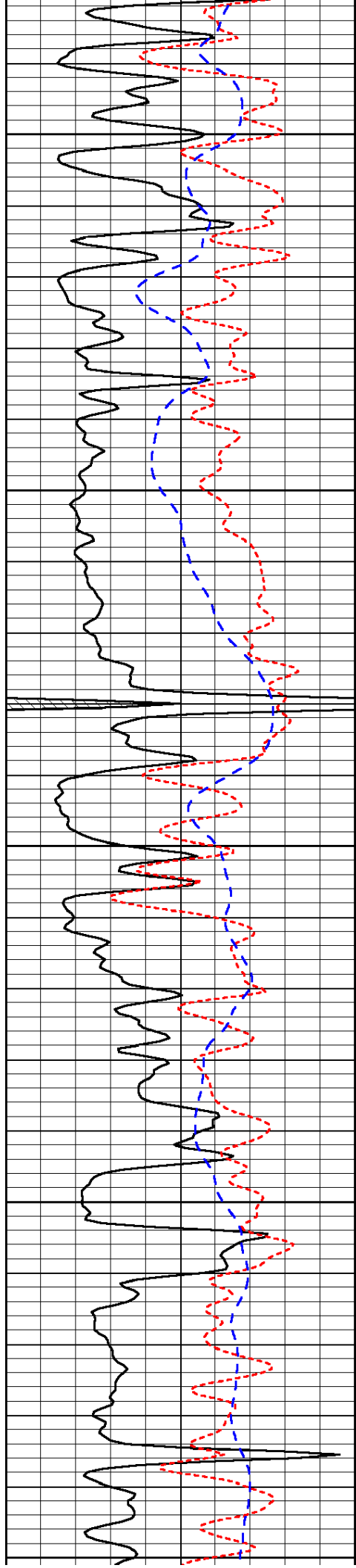


-36

-34

-34

-33



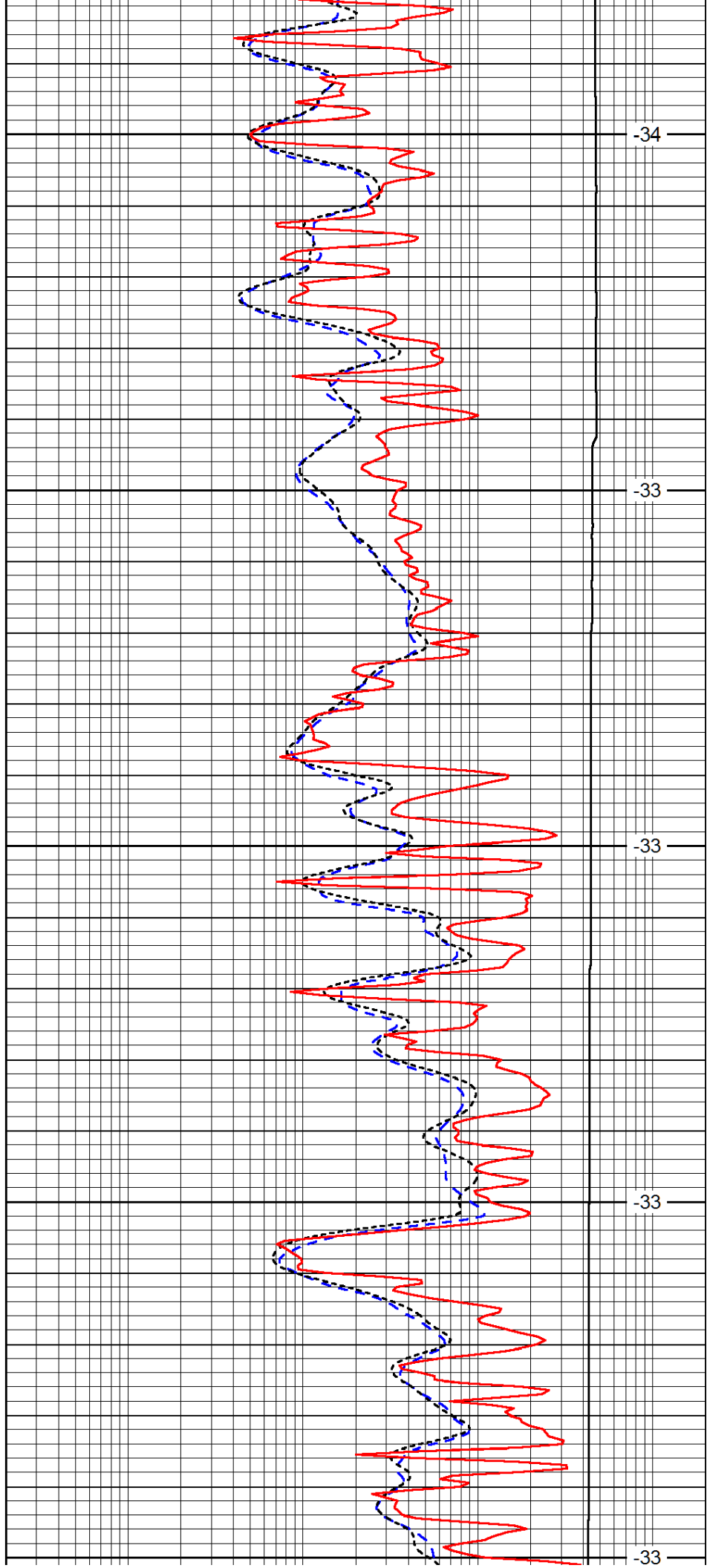
2950

3000

3050

3100

3150



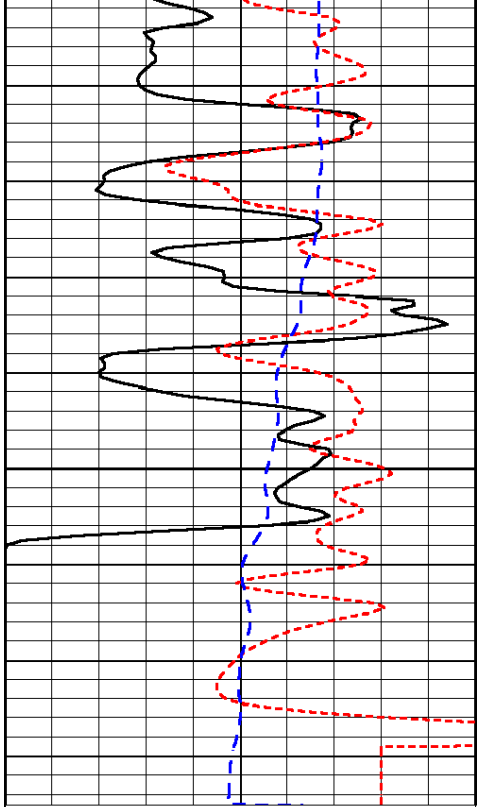
-34

-33

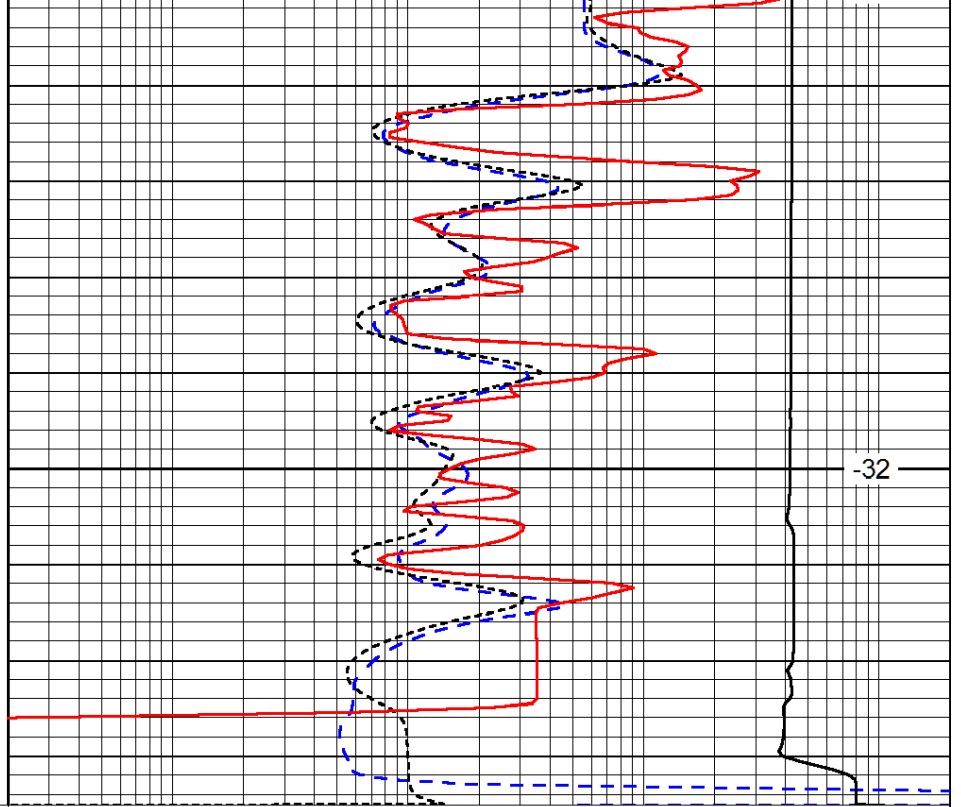
-33

-33

-33



3200



-32

0	Gamma Ray (GAPI)	150
-160	RXO/RT	40
-200	SP (mV)	0

0.2	Deep Resistivity (Ohm-m)	2000
0.2	Medium Resistivity (Ohm-m)	2000
0.2	Shallow Resistivity (Ohm-m)	2000
10000	Line Tension (lb)	0

LSPD
(ft/min)