



Pioneer Energy Services

## Dual Compensated Porosity Log

API No. 15-159-22,179-00-00

Company: American Warrior, Inc.  
 Well: Volkland No.1-32  
 Field: Chase-Silica  
 County: Rice  
 State: Kansas

Location: 1416' FSL & 2544' FEL

Sec: 32 Twp: 18S Rge: 9W

Other Services: DIL

Permanent Datum: Ground Level Elevation 1718  
 Log Measured From: Kelly Bushing 8 Ft. Above Perm. Datum  
 Drilling Measured From: Kelly Bushing

K.B. 1726  
 D.F. 1718  
 G.L.

Date: 12/17/2012

Run Number: One

Type Log: CNL / CDL

Depth Driller: 3255

Depth Logger: 3230

Bottom Logged Interval: 3209

Top Logged Interval: 2700

Type Fluid In Hole: Chemical

Salinity, PPM CL: 5.700

Density: 9.15

Level: Full

Max. Rec. Temp. F: 111

Operating Rig Time: 2 Hours

Equipment -- Location: 10 Hays

Recorded By: C. Desaire

Witnessed By: Kurt Talbott

Borehole Record				Casing Record			
Run No.	Bit	From	To	Size	Wgt.	From	To
One	12.25	00	332	8.625	23#	00	332
Two	7.875	332	TD				

<<< Fold Here >>>

All interpretations are opinions based on inferences from electrical or other measurements and we cannot and do not guarantee the accuracy or correctness of any interpretation, and we shall not, except in the case of gross or willful negligence on our part, be liable or responsible for any loss, costs, damages, or expenses incurred or sustained by anyone resulting from any interpretation made by any of our officers, agents or employees. These interpretations are also subject to our general terms and conditions set out in our current Price Schedule.

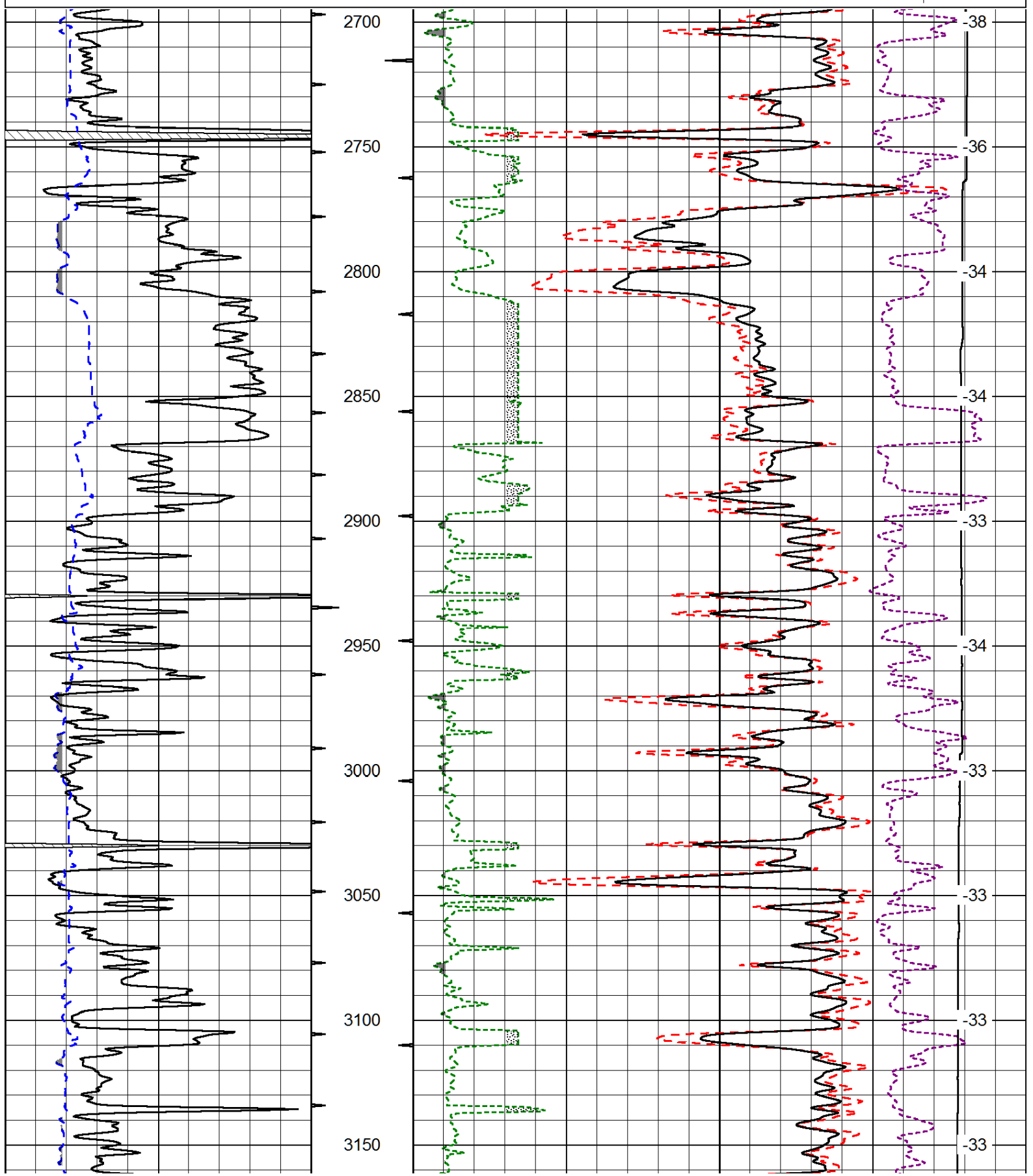
Comments

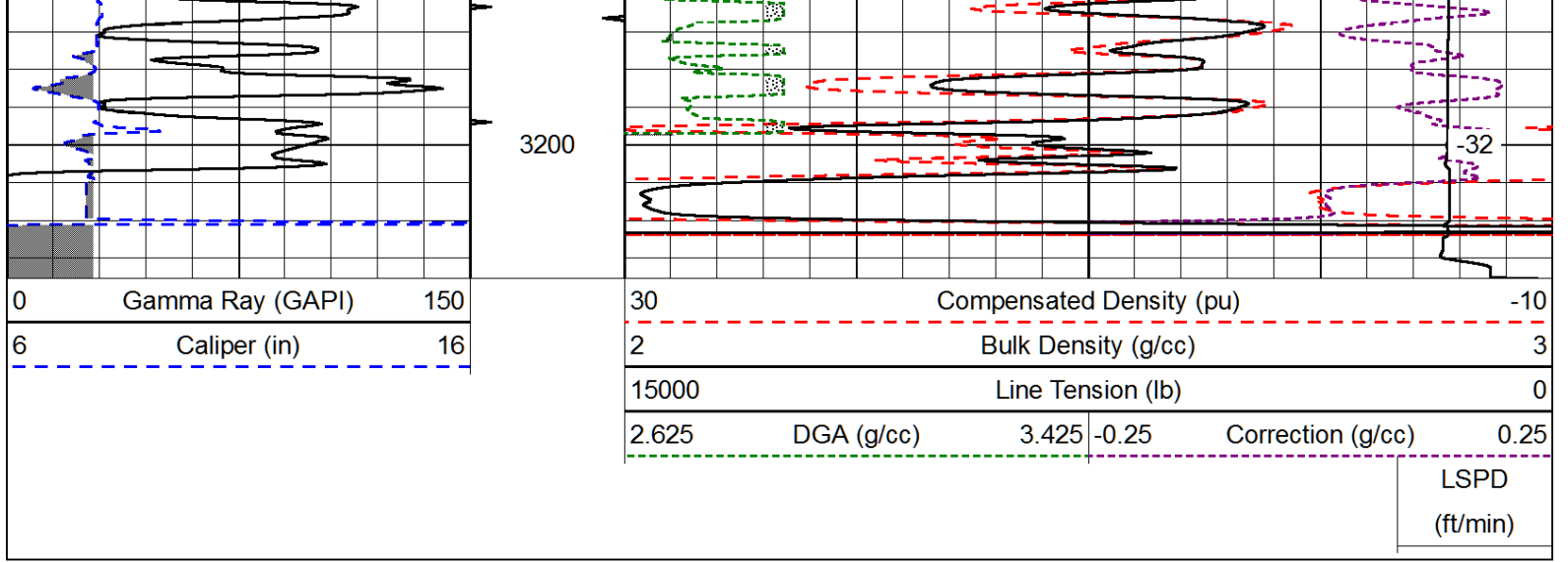
Thank you for using Log-Tech, Inc.  
 (785) 625-3858

Chase KS, 4 N, 1/2 E, N Into

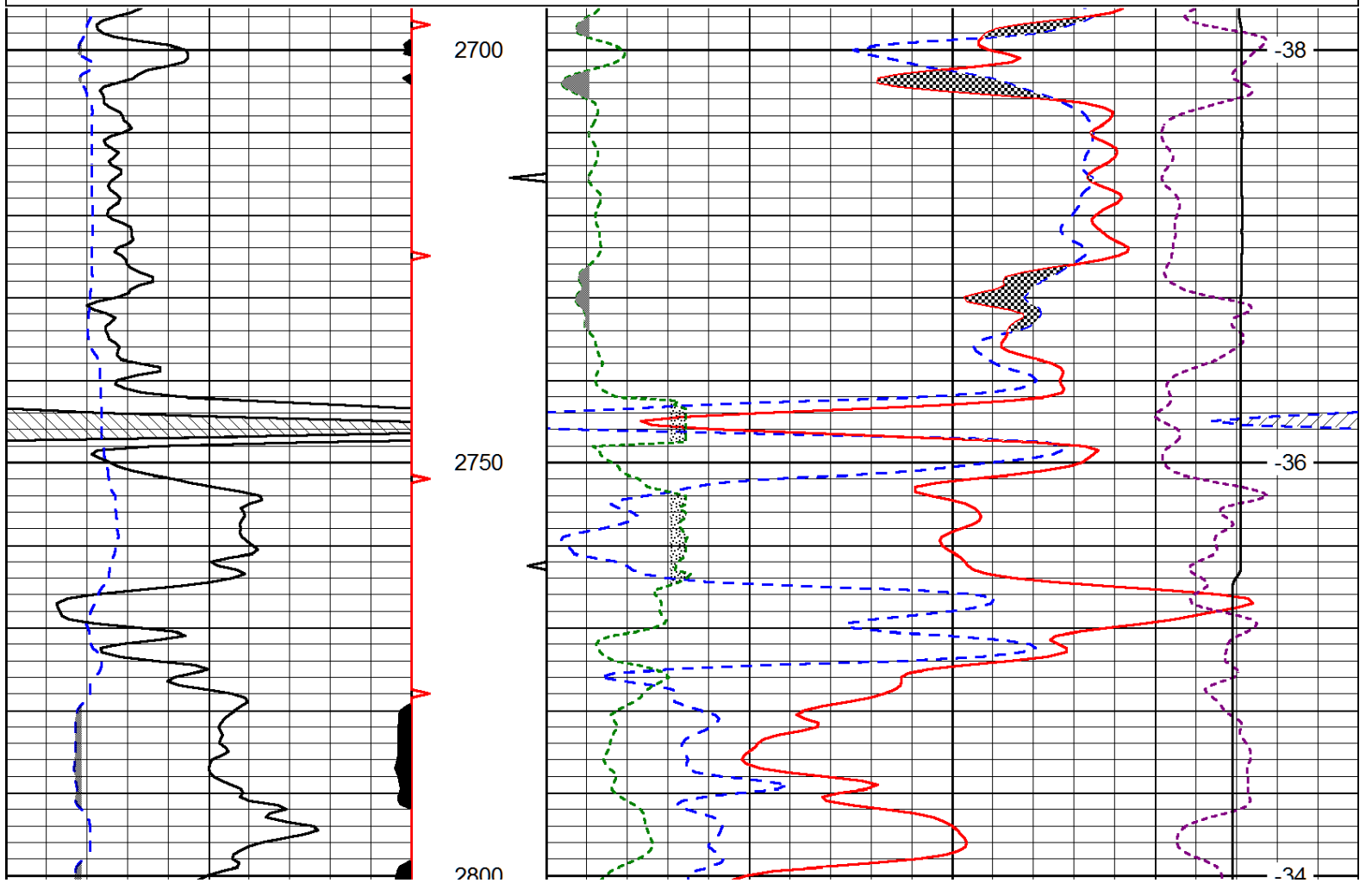
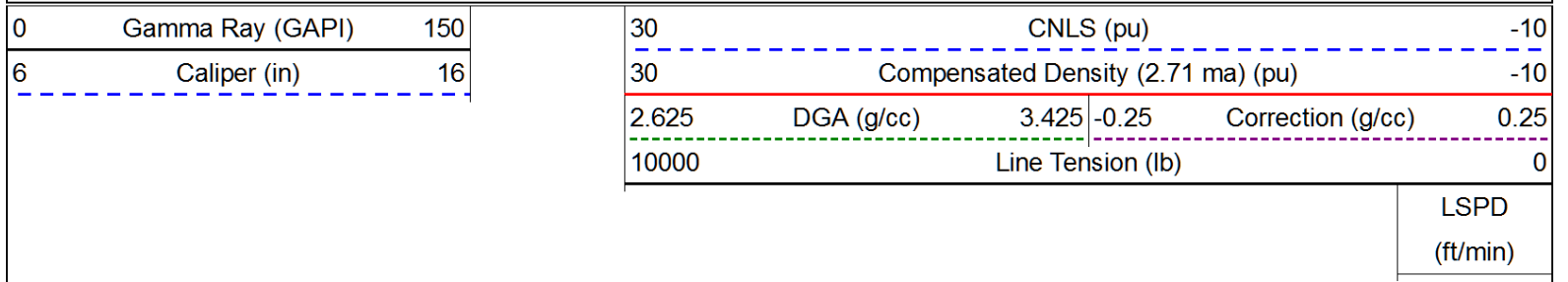
0	Gamma Ray (GAPI)	150
6	Caliper (in)	16

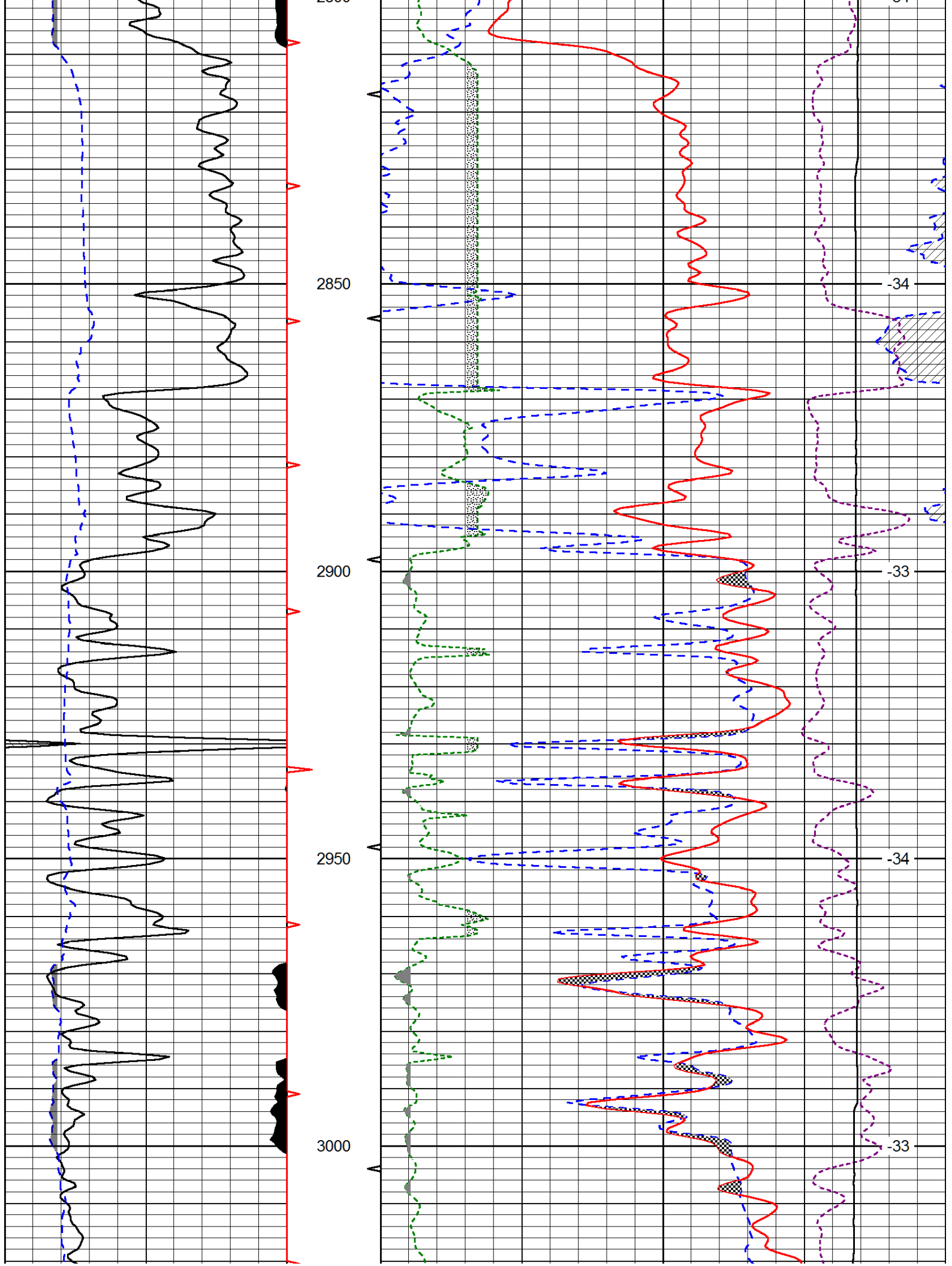
30	Compensated Density (pu)		-10
2	Bulk Density (g/cc)		3
15000	Line Tension (lb)		0
2.625	DGA (g/cc)	3.425	-0.25
			Correction (g/cc)
			0.25
			LSPD (ft/min)

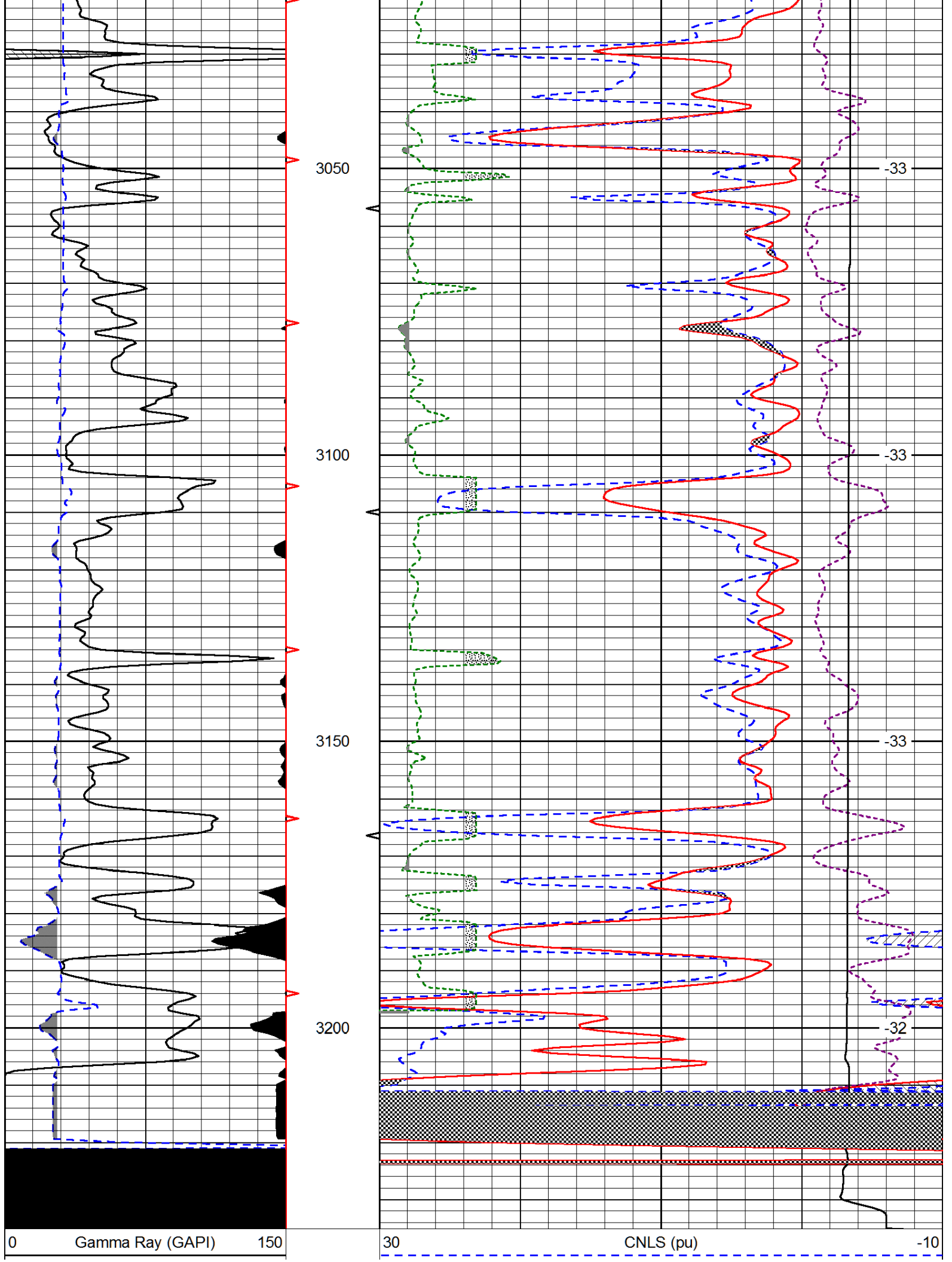




Database File: amwarriorhd.db  
 Dataset Pathname: dil/awstk  
 Presentation Format: cndlspec  
 Dataset Creation: Mon Dec 17 10:39:32 2012  
 Charted by: Depth in Feet scaled 1:240







6 Caliper (in) 16

30	Compensated Density (2.71 ma) (pu)			-10	
2.625	DGA (g/cc)	3.425	-0.25	Correction (g/cc)	0.25
10000	Line Tension (lb)			0	
				LSPD (ft/min)	