



Pioneer Energy Services

Radiation Guard Log

15-063-22063-00-00

API No.

Company Palomino Petroleum, Inc.

Well Trebor #1

Field Wildcat

County Gove State Kansas

Location

1622' FNL & 1920' FEL

Other Services
MEL

Sec: 13 Twp: 15S Rge: 26W

Permanent Datum Ground Level Elevation 2403

Log Measured From Kelly Bushing 11 Ft. Above Perm. Datum

Drilling Measured From Kelly Bushing

Elevation
K.B. 2414
D.F. 2403
G.L. 2403

Date 12/8/2012

Run Number One

Depth Driller 4440

Depth Logger 4438

Bottom Logged Interval 4437

Top Log Interval 200

Casing Driller 8.625 @ 225

Casing Logger 223

Bit Size 7.875

Type Fluid in Hole Chemical

Salinity, ppm CL 2600

Density / Viscosity 9.35 48

pH / Fluid Loss 11.0 6.4

Source of Sample Flowline

Rm @ Meas. Temp 0.70 @ 44

Rmf @ Meas. Temp 0.53 @ 44

Rmc @ Meas. Temp 0.95 @ 44

Source of Rmf / Rmc Charts

Rm @ BHT 0.25 @ 122

Operating Rig Time 4 Hours

Max Rec. Temp. F 122

Equipment Number 91

Location Hays

Recorded By D. Schmidt

Witnessed By Kevin Bailey

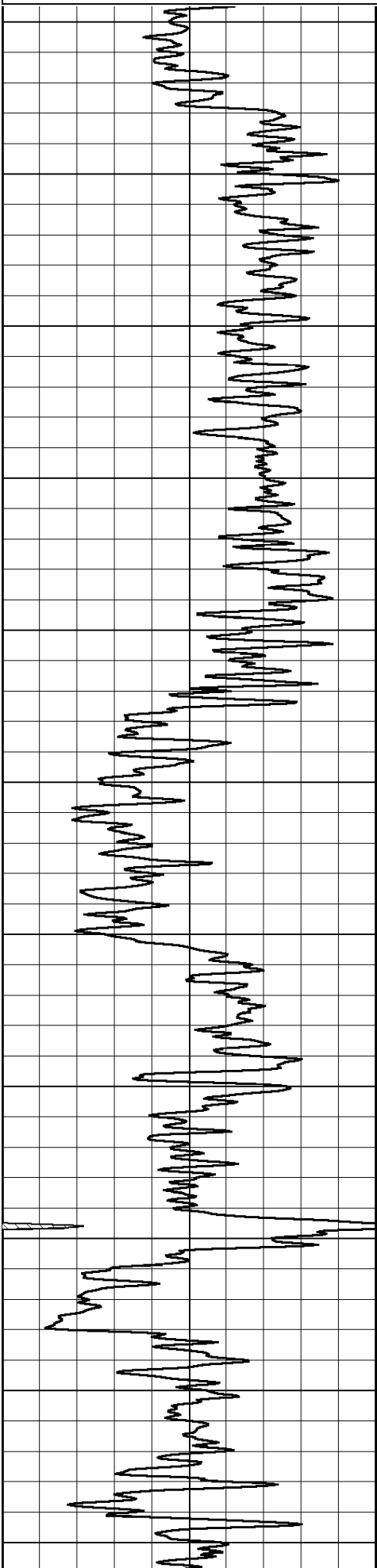
<<< Fold Here >>>

All interpretations are opinions based on inferences from electrical or other measurements and we cannot and do not guarantee the accuracy or correctness of any interpretation, and we shall not, except in the case of gross or willful negligence on our part, be liable or responsible for any loss, costs, damages, or expenses incurred or sustained by anyone resulting from any interpretation made by any of our officers, agents or employees. These interpretations are also subject to our general terms and conditions set out in our current Price Schedule.

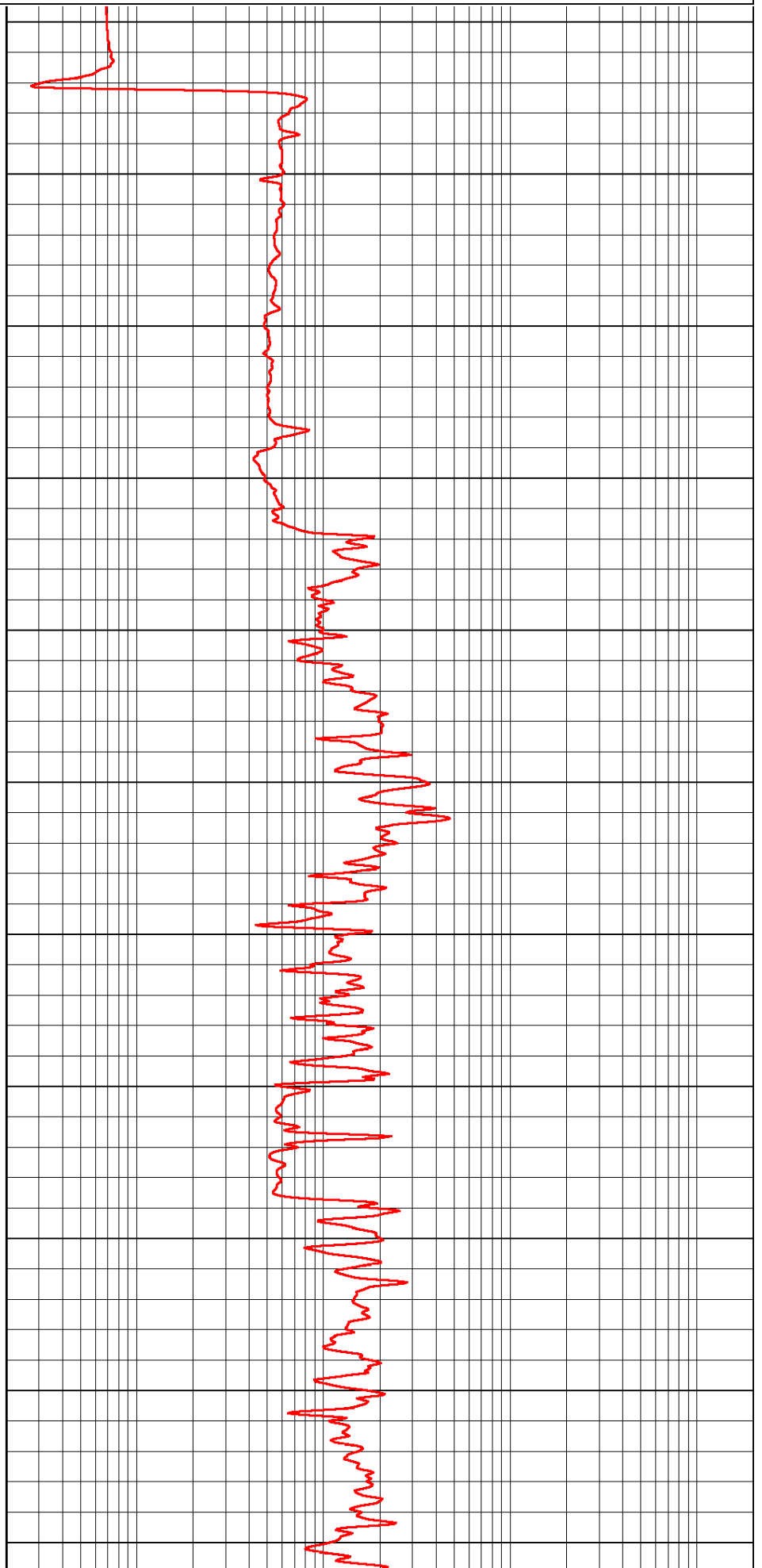
Comments

Thank you for using Log-Tech, Inc.
(785) 625-3858
Wakeeney,
9 South on Hwy 283 to R Rd, 12 West to 130th, 7 South to Y Rd,
1 West, 1 South, 1 West, 1 South,
West & South into

Database File: palomino_120812hd.db
Dataset Pathname: rag/palrag
Presentation Format: rag2in
Dataset Creation: Sat Dec 08 05:35:19 2012
Charted by: Depth in Feet scaled 1:600



200
250
300
350
400
450
500
550
600
650
700



750

800

850

900

950

1000

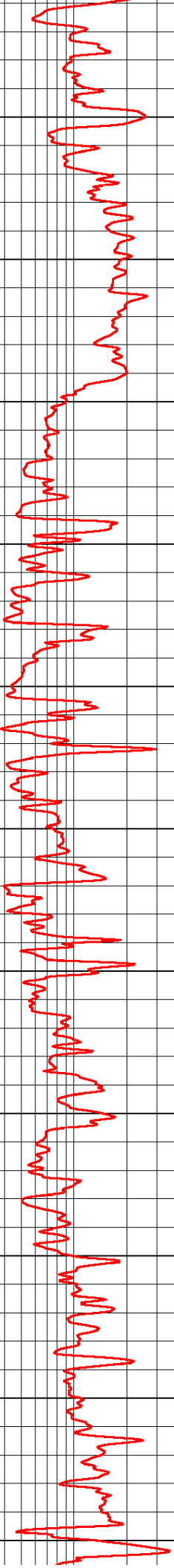
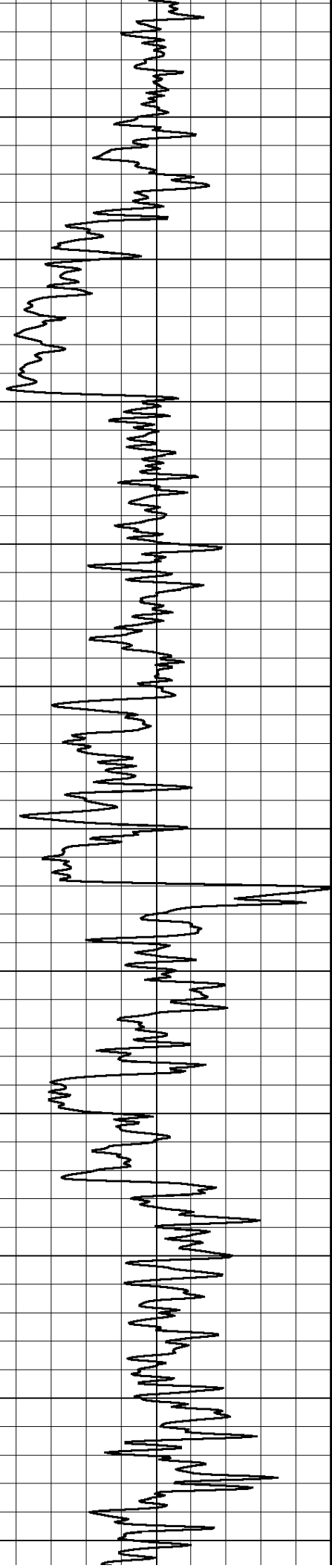
1050

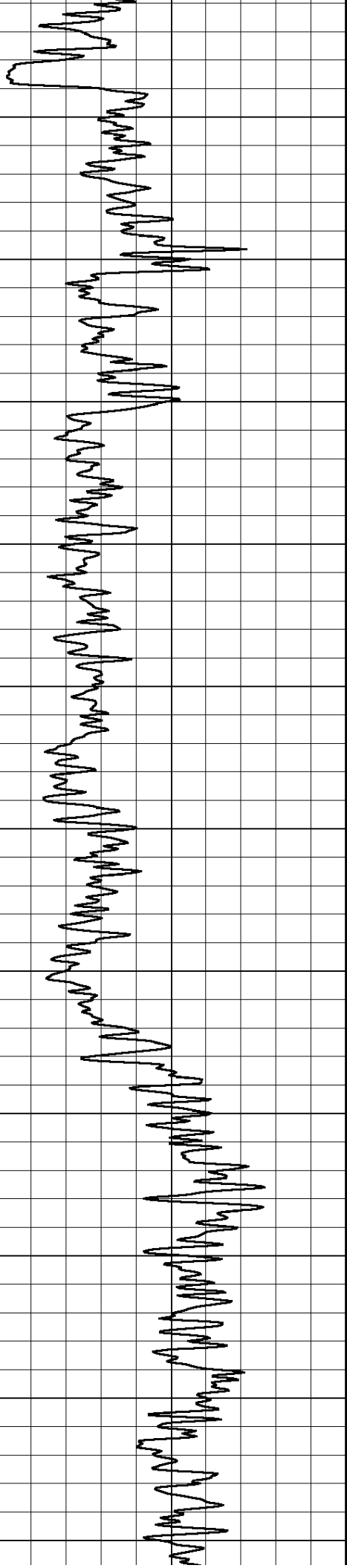
1100

1150

1200

1250





1300

1350

1400

1450

1500

1550

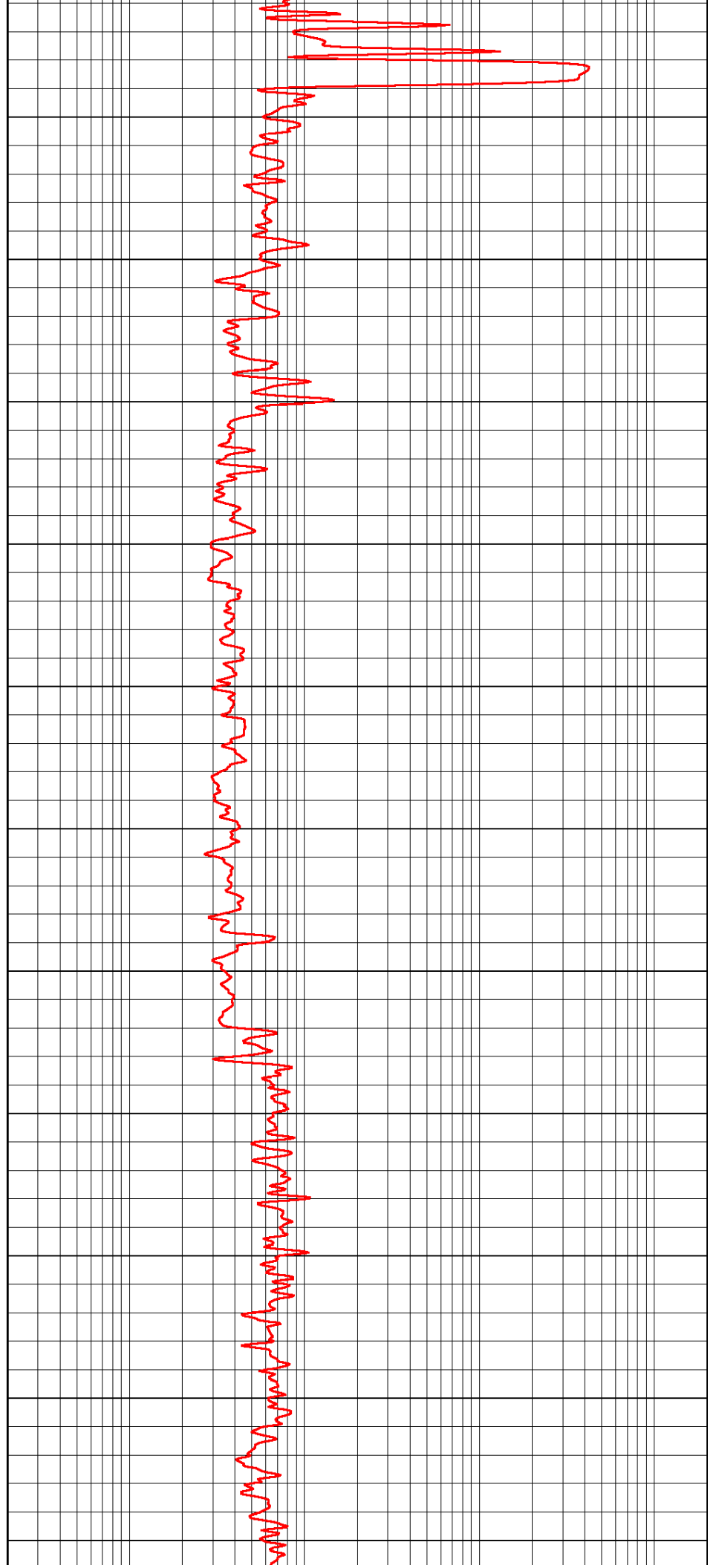
1600

1650

1700

1750

1800



1300

1350

1400

1450

1500

1550

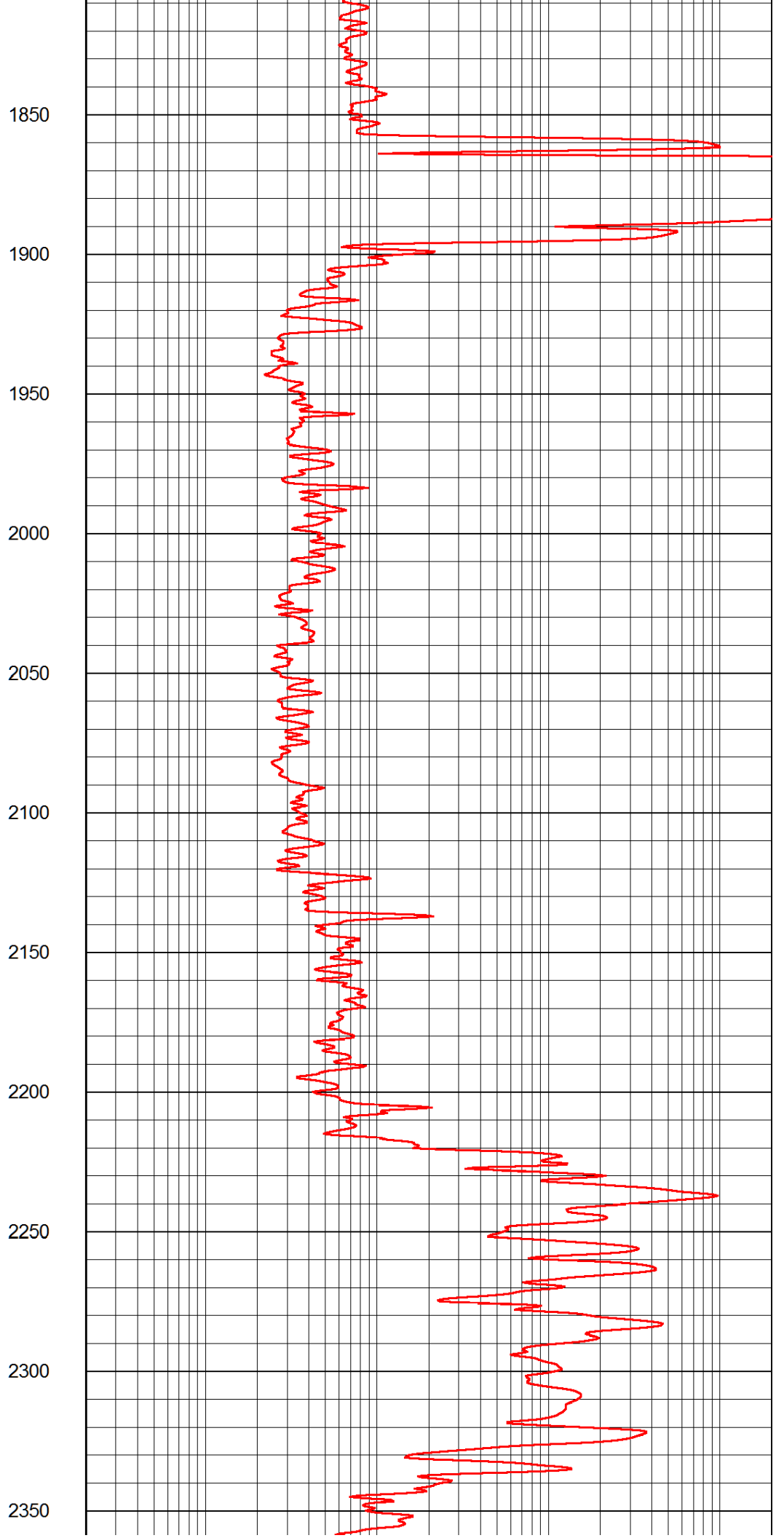
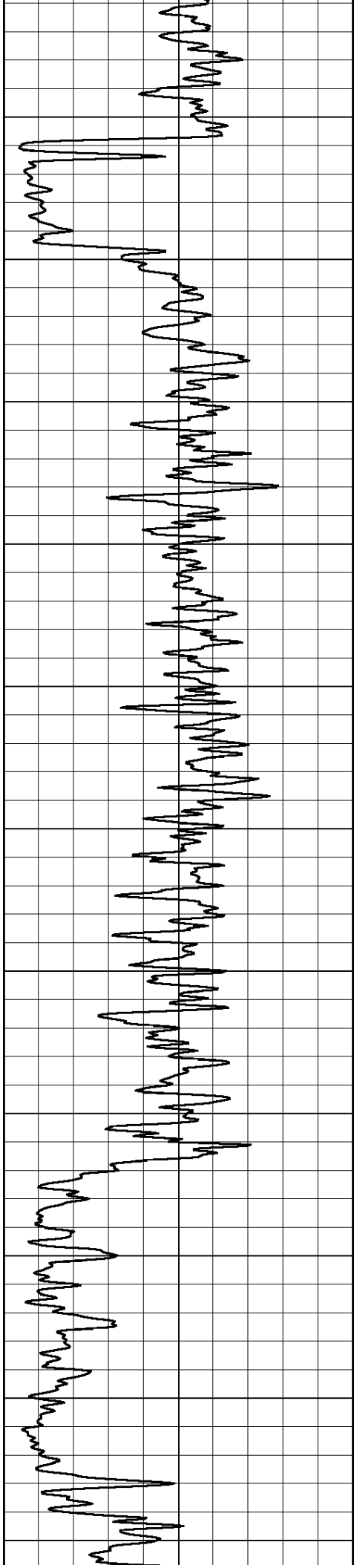
1600

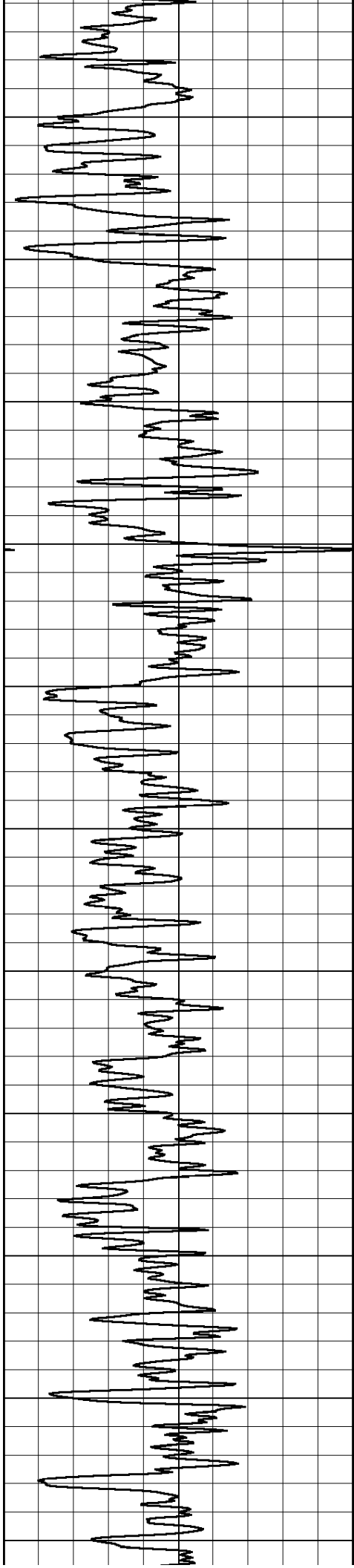
1650

1700

1750

1800





2400

2450

2500

2550

2600

2650

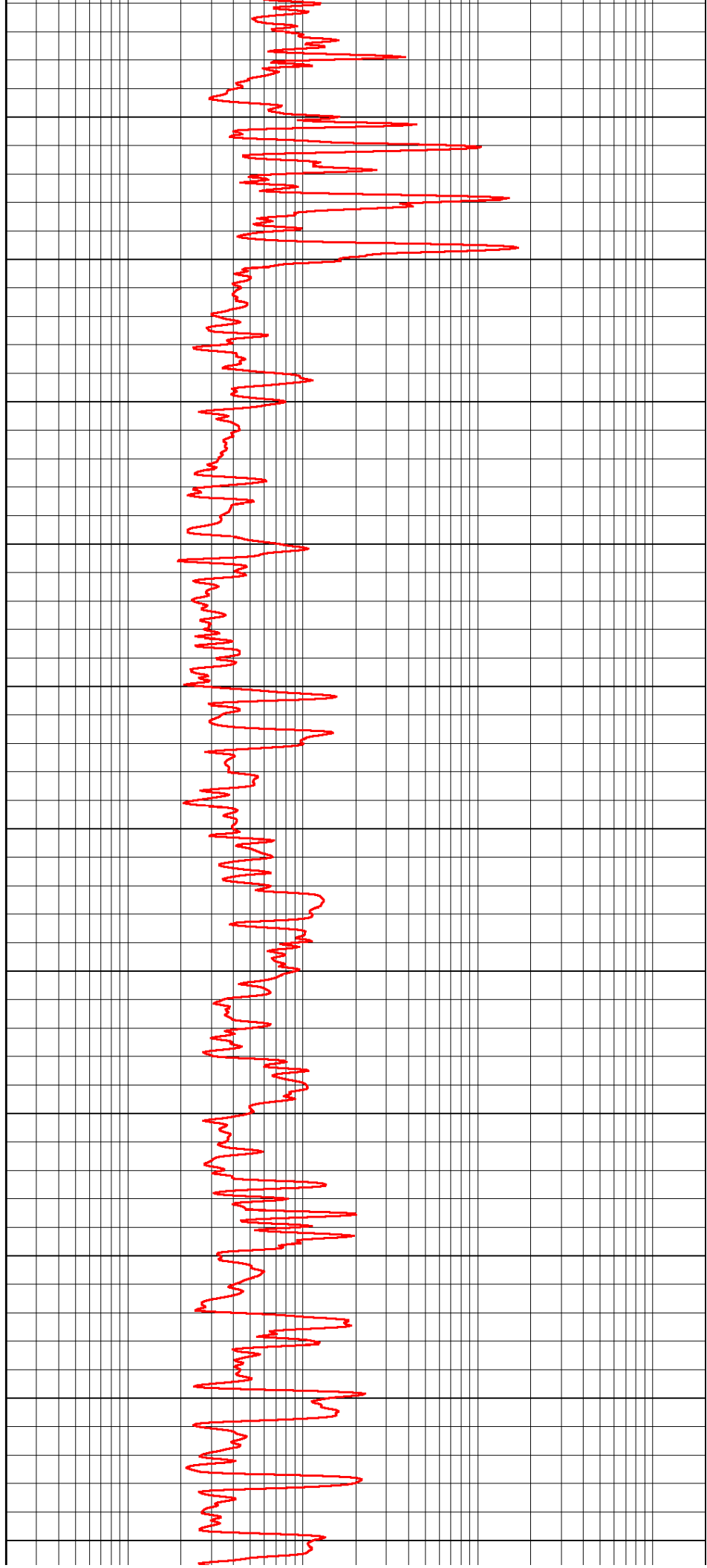
2700

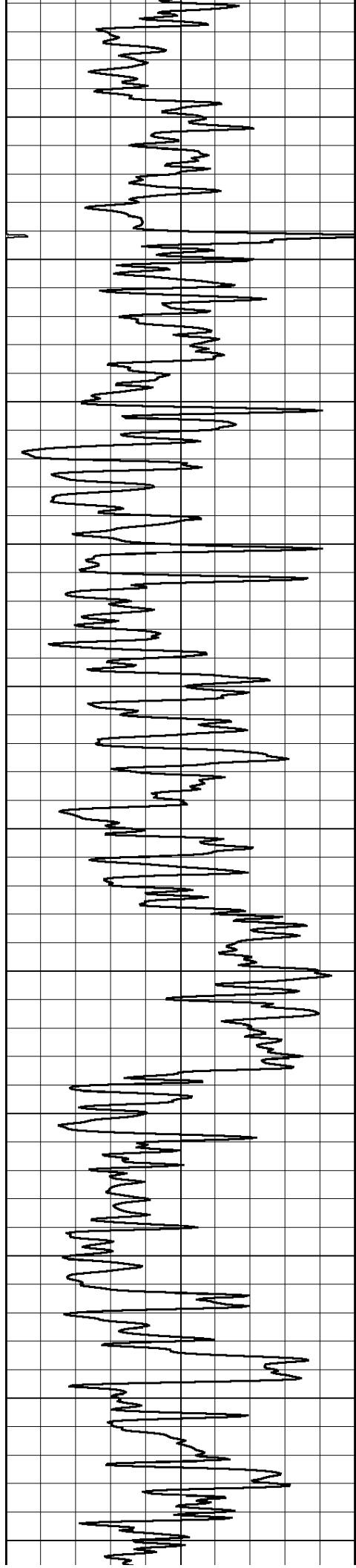
2750

2800

2850

2900





2950

3000

3050

3100

3150

3200

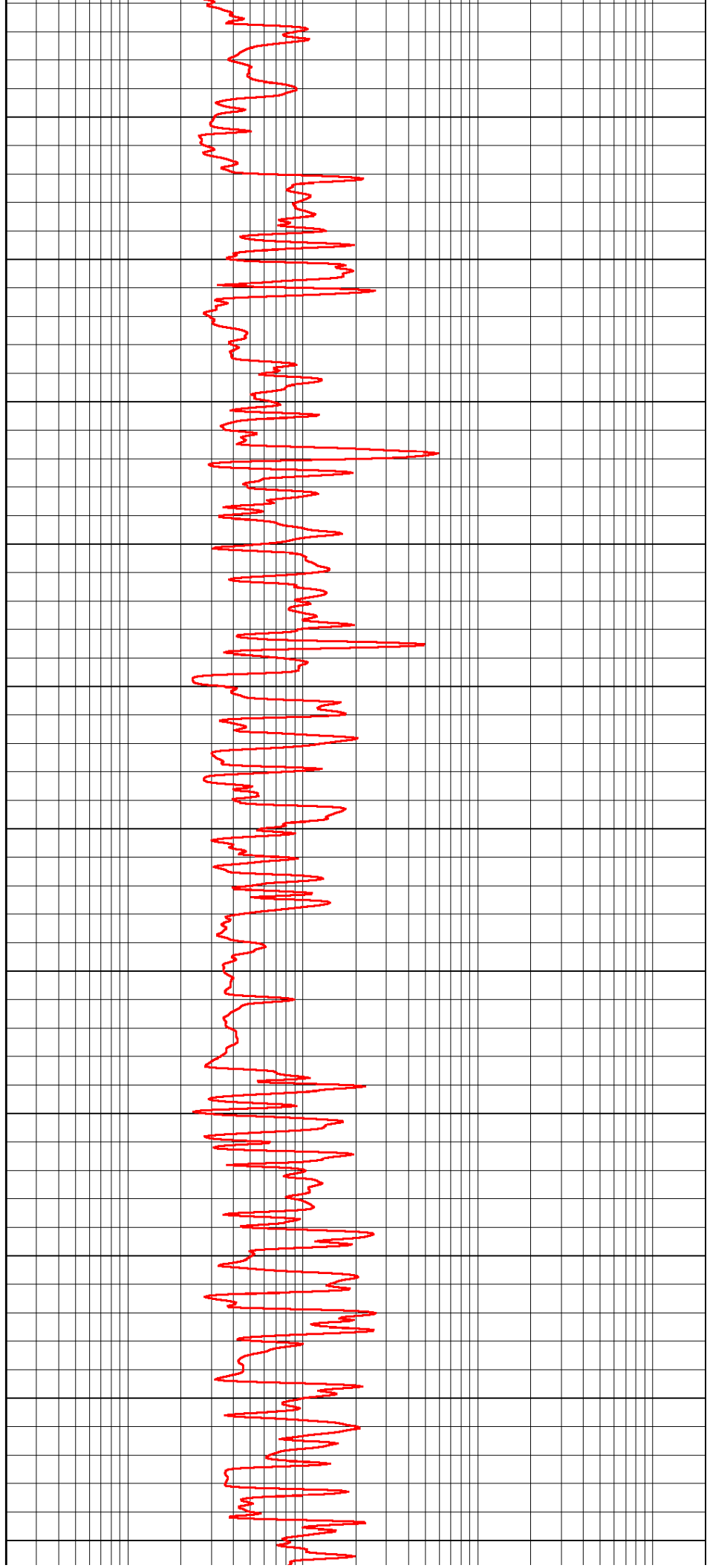
3250

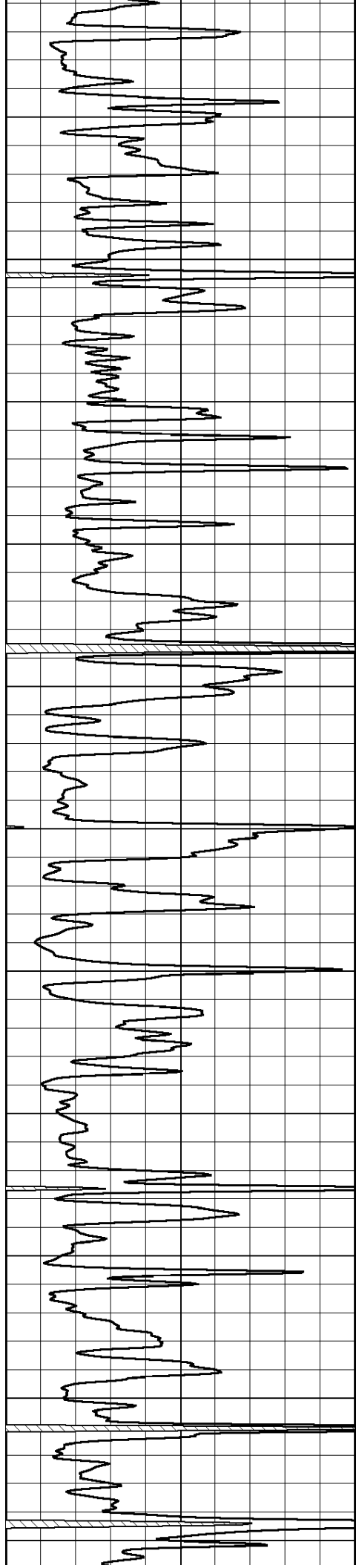
3300

3350

3400

3450





3500

3550

3600

3650

3700

3750

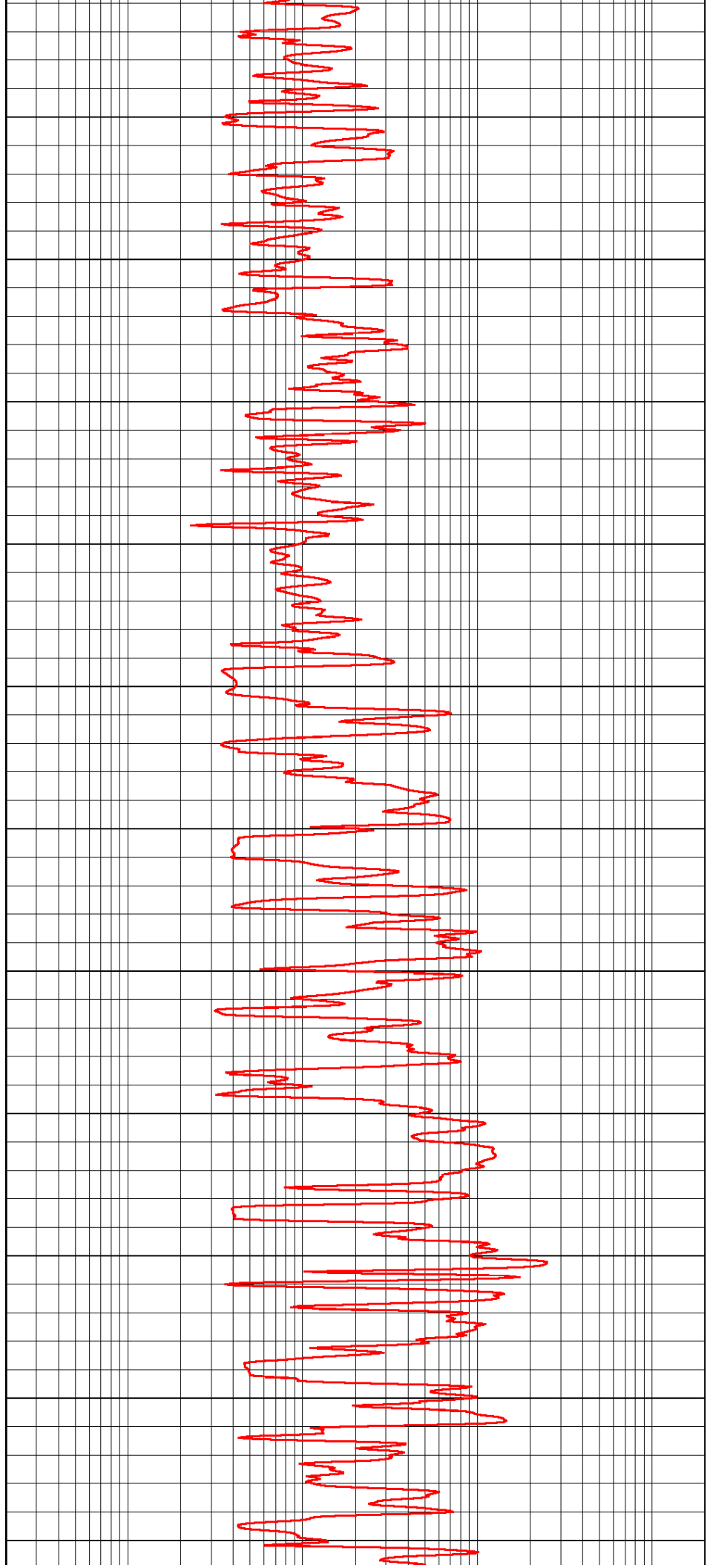
3800

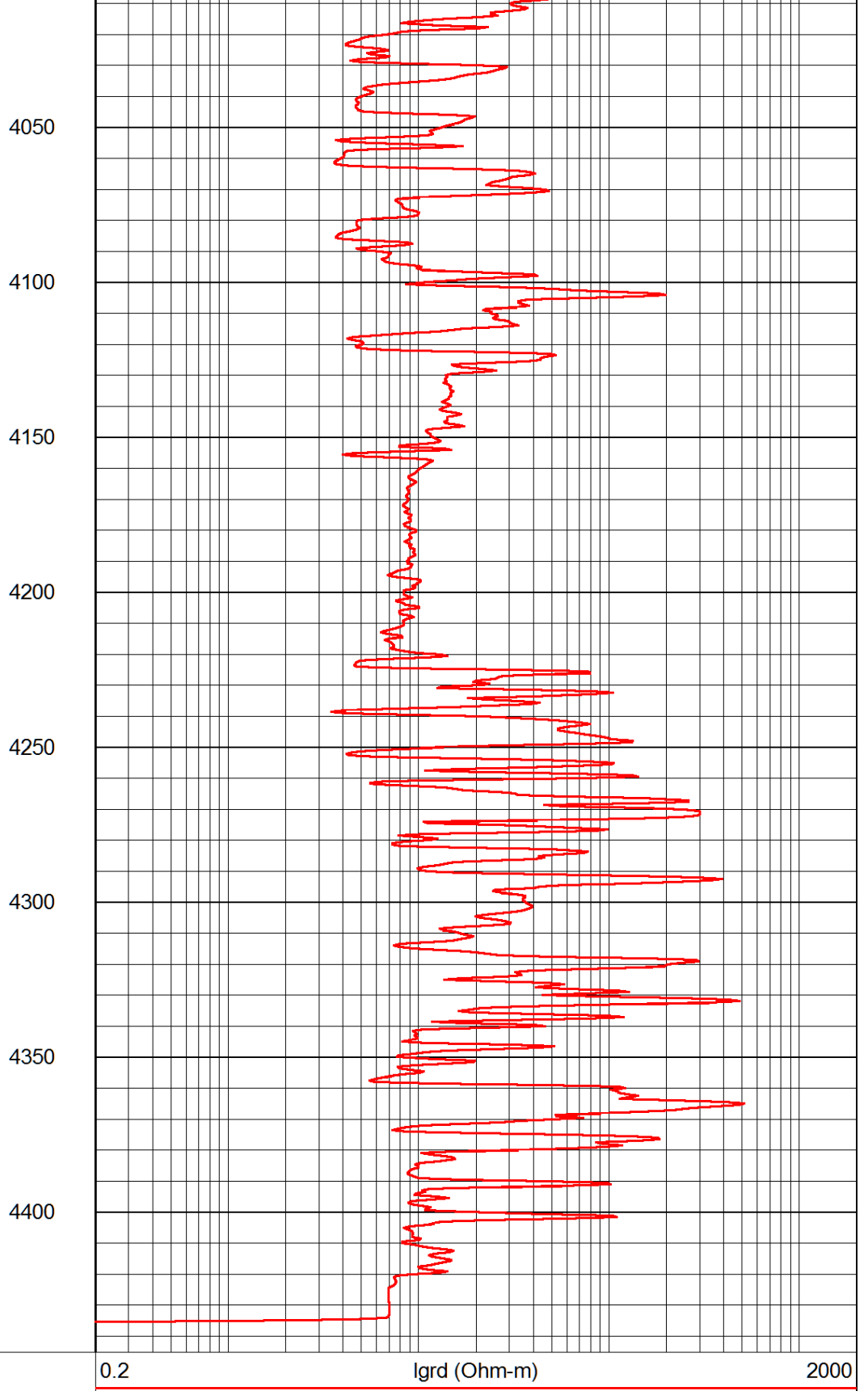
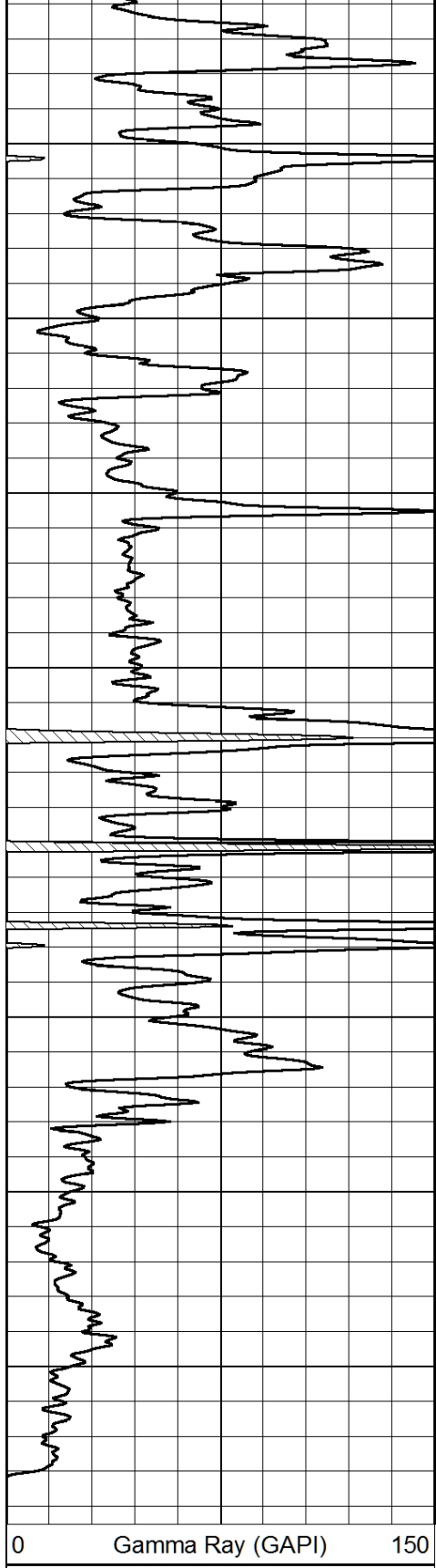
3850

3900

3950

4000

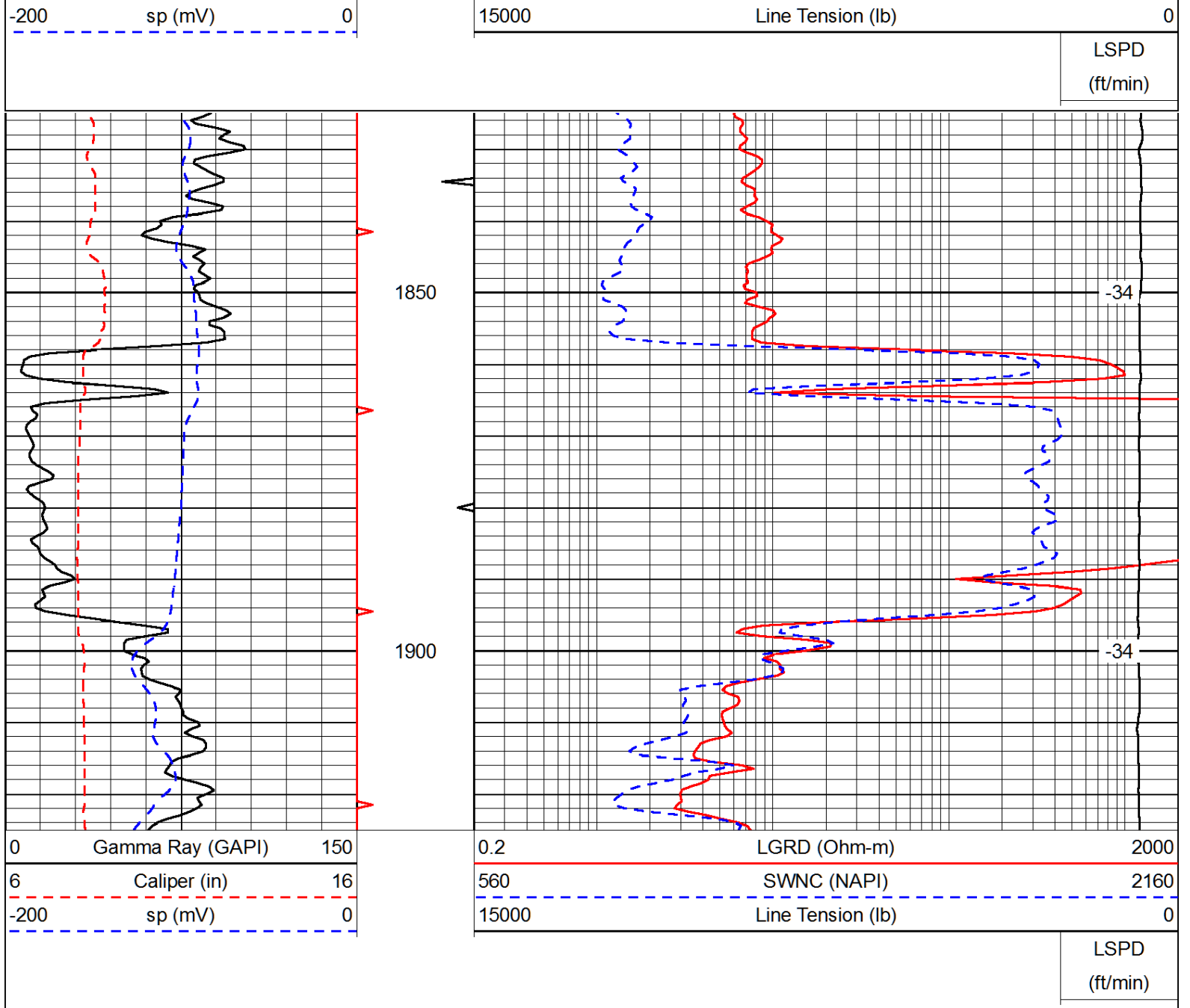




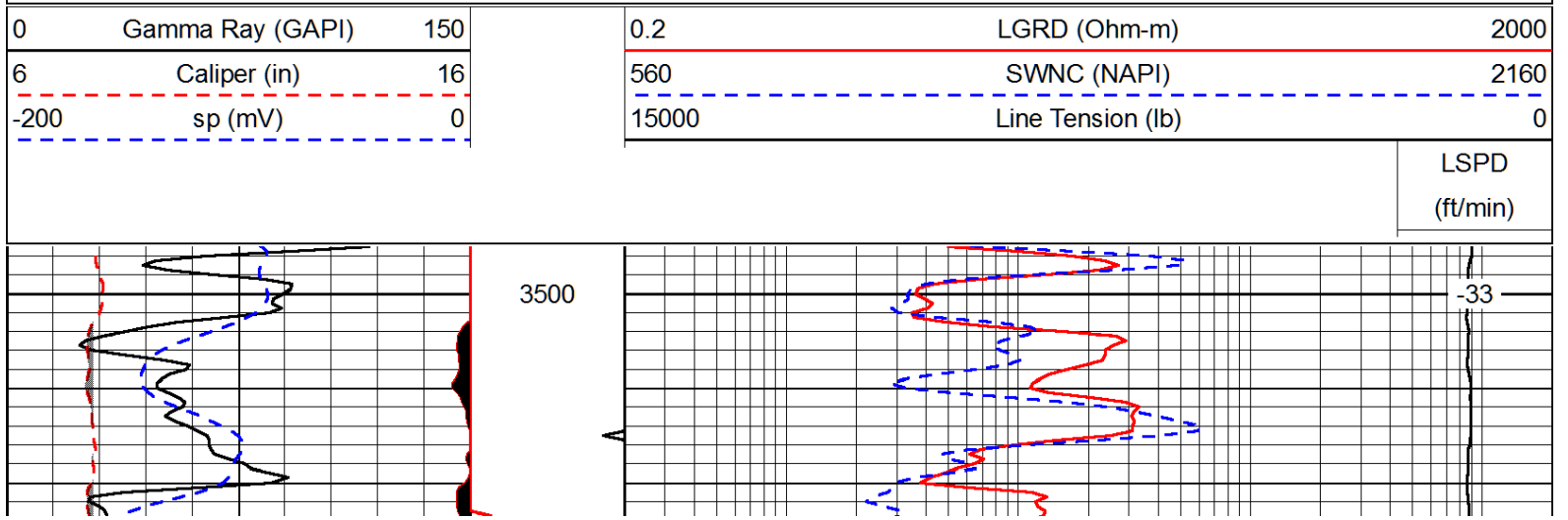
Database File: palomino_120812hd.db
 Dataset Pathname: rag/palrag
 Presentation Format: rag
 Dataset Creation: Sat Dec 08 05:35:19 2012
 Charted by: Depth in Feet scaled 1:240

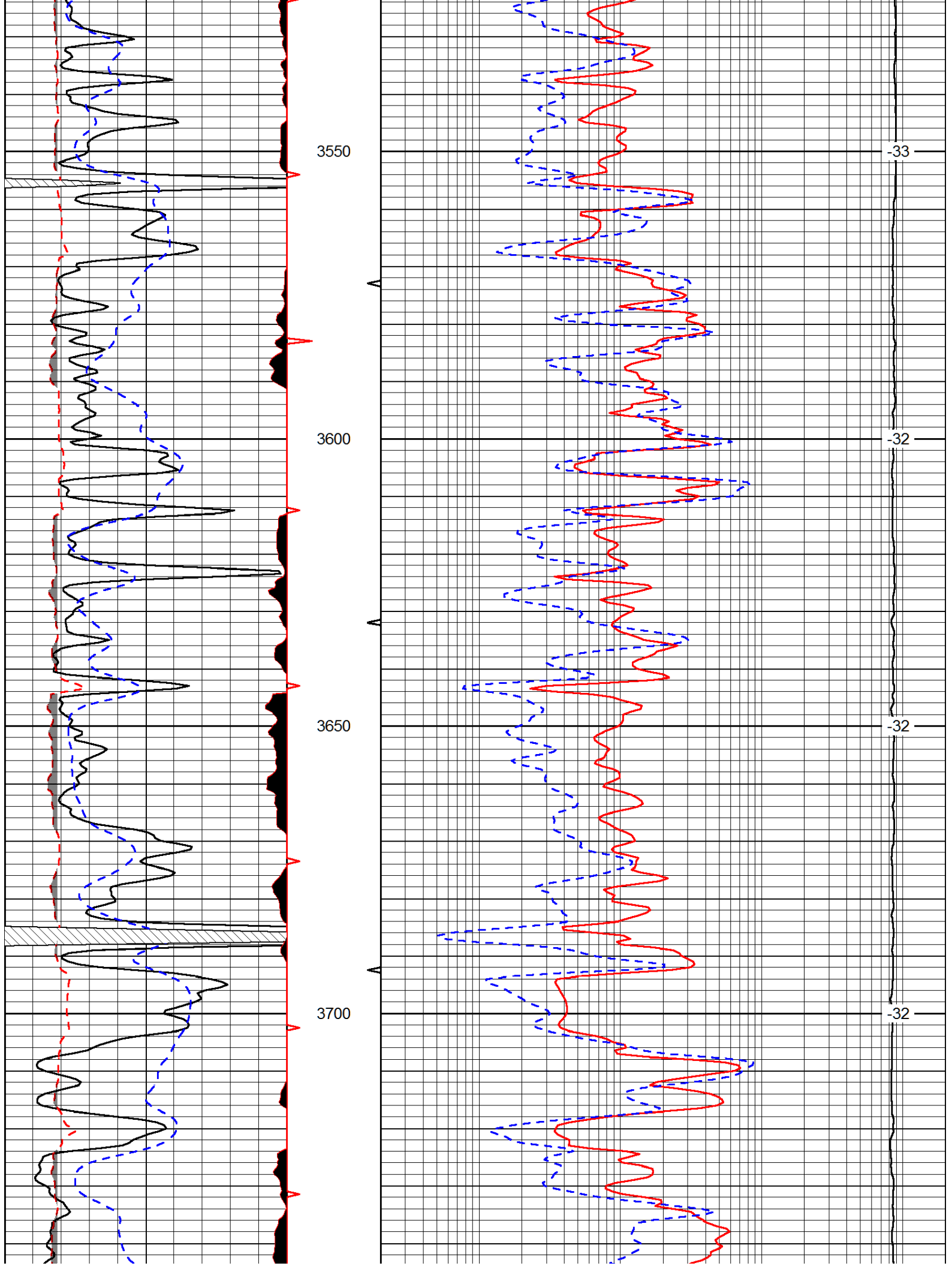
0	Gamma Ray (GAPI)	150
6	Caliper (in)	16

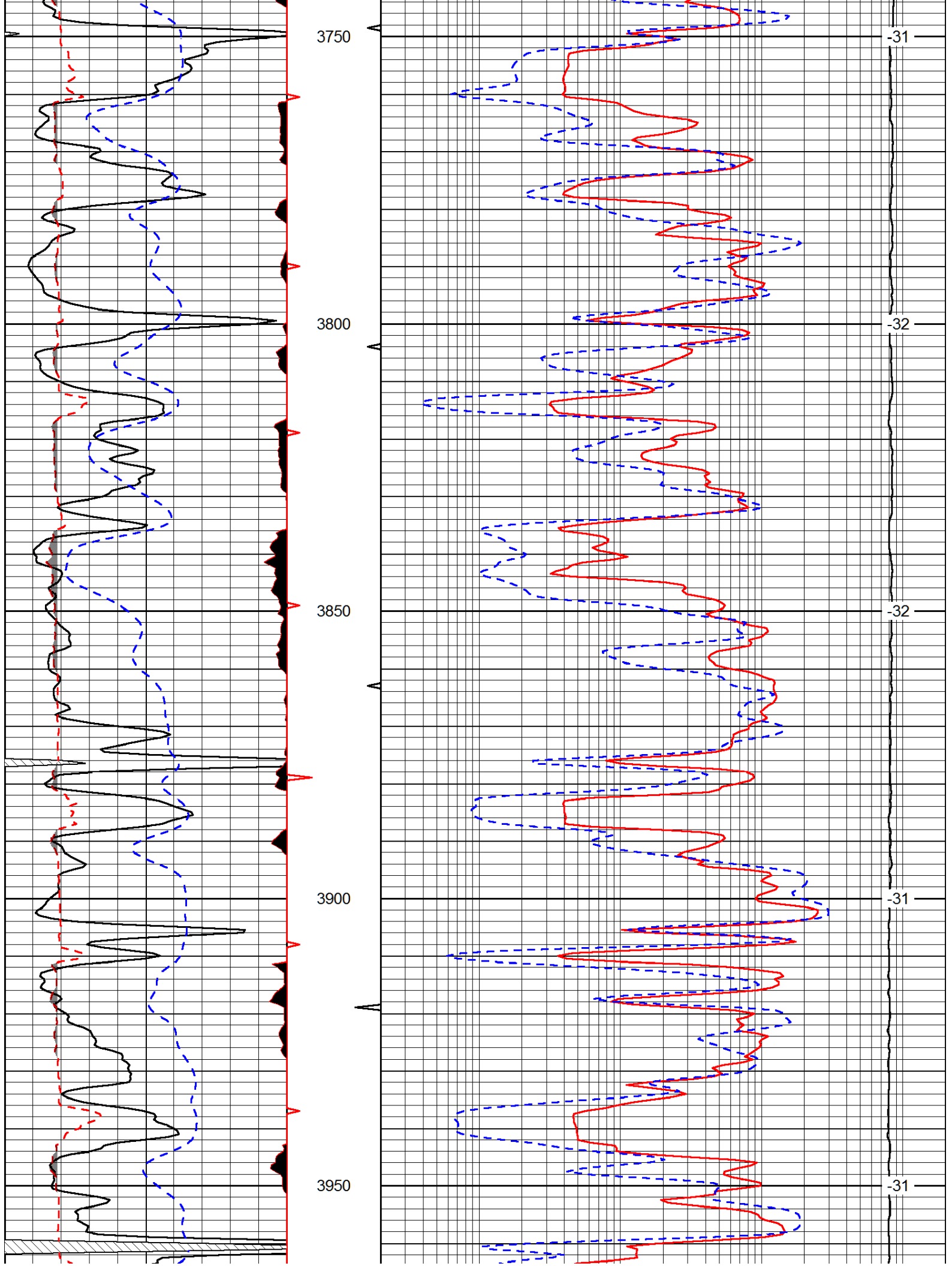
0.2	LGRD (Ohm-m)	2000
560	SWNC (NAPI)	2160

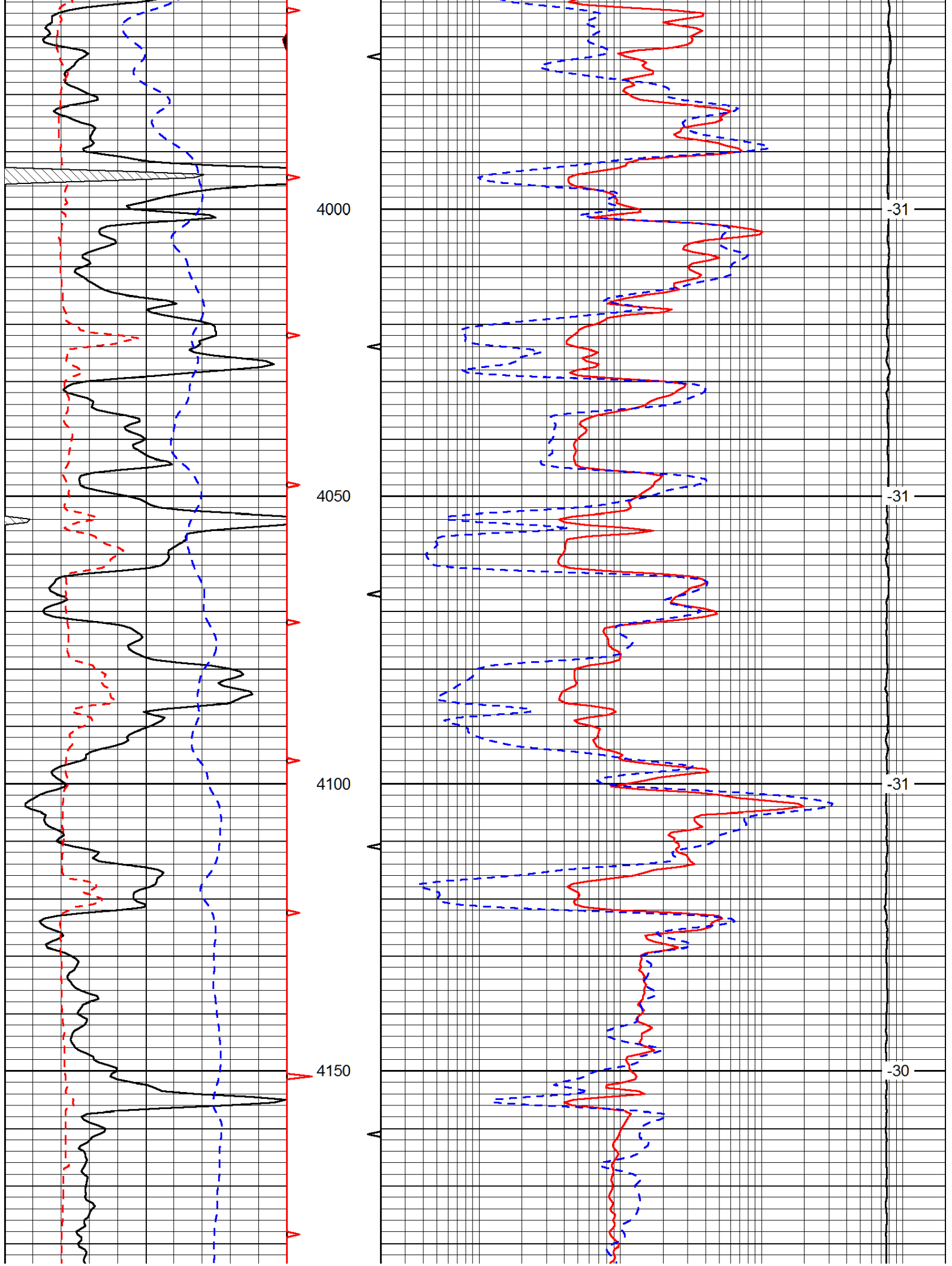


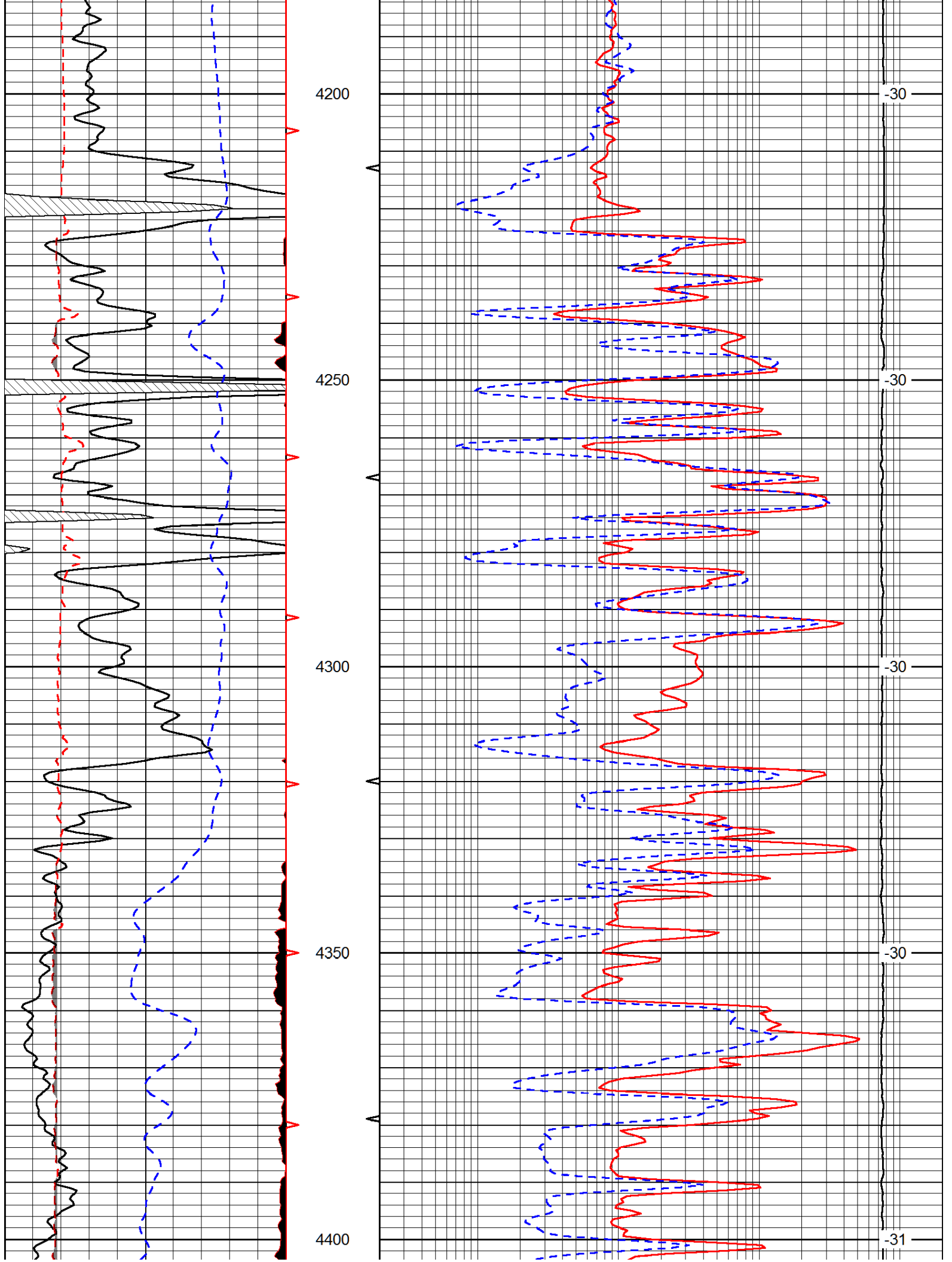
Database File: palomino_120812hd.db
 Dataset Pathname: rag/palrag
 Presentation Format: rag
 Dataset Creation: Sat Dec 08 05:35:19 2012
 Charted by: Depth in Feet scaled 1:240

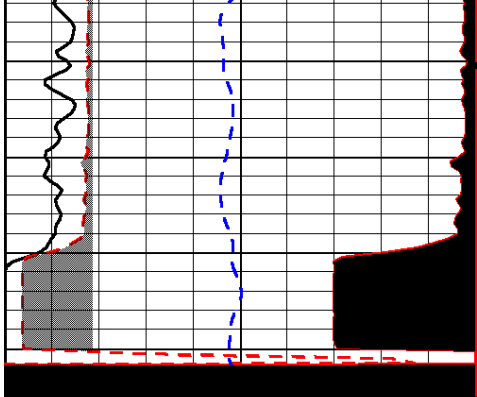




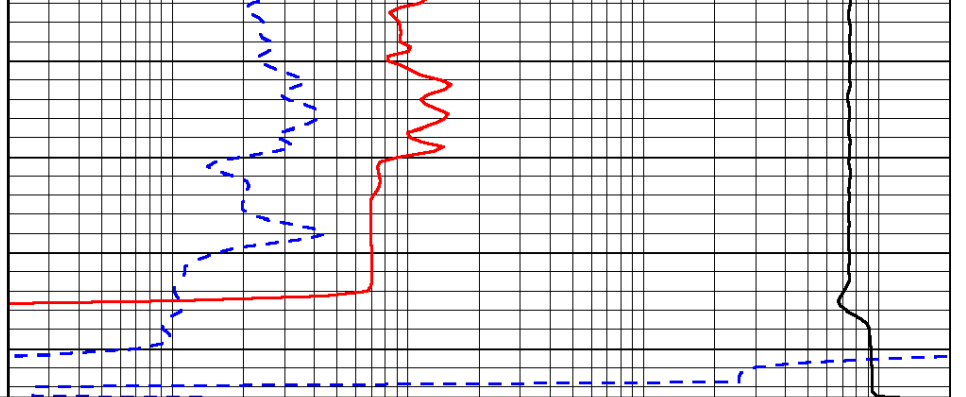








0	Gamma Ray (GAPI)	150
6	Caliper (in)	16
-200	sp (mV)	0



0.2	LGRD (Ohm-m)	2000
560	SWNC (NAPI)	2160
15000	Line Tension (lb)	0

LSPD (ft/min)
