



Pioneer Energy Services

Microresistivity Log

API No.	15-063-22063-00-00		
Company	Palomino Petroleum, Inc.		
Well	Trebtor #1		
Field	Wildcat		
County	Gove	State	Kansas
Location	1622' FNL & 1920' FEL		
Sec: 13	Twp: 15S	Rge: 26W	Other Services RAG

Permanent Datum	Ground Level	Elevation 2403
Log Measured From	Kelly Bushing	11 Ft. Above Perm. Datum
Drilling Measured From	Kelly Bushing	

Date	12/8/2012
Run Number	Two
Depth Driller	4440
Depth Logger	4438
Bottom Logged Interval	3500
Top Log Interval	200
Casing Driller	8.625 @ 225
Casing Logger	223
Bit Size	7.875
Type Fluid in Hole	Chemical
Salinity, ppm CL	2600
Density / Viscosity	9.35 48
pH / Fluid Loss	11.0 6.4
Source of Sample	Flowline
Rm @ Meas. Temp	0.70 @ 44
Rmf @ Meas. Temp	0.53 @ 44
Rmc @ Meas. Temp	0.95 @ 44
Source of Rmf / Rmc	Charts
Rm @ BHT	0.25 @ 122
Operating Rig Time	4 Hours
Max Rec. Temp. F	122
Equipment Number	91
Location	Hays
Recorded By	D. Schmidt
Witnessed By	Kevin Bailey

<<< Fold Here >>>

All interpretations are opinions based on inferences from electrical or other measurements and we cannot and do not guarantee the accuracy or correctness of any interpretation, and we shall not, except in the case of gross or willful negligence on our part, be liable or responsible for any loss, costs, damages, or expenses incurred or sustained by anyone resulting from any interpretation made by any of our officers, agents or employees. These interpretations are also subject to our general terms and conditions set out in our current Price Schedule.

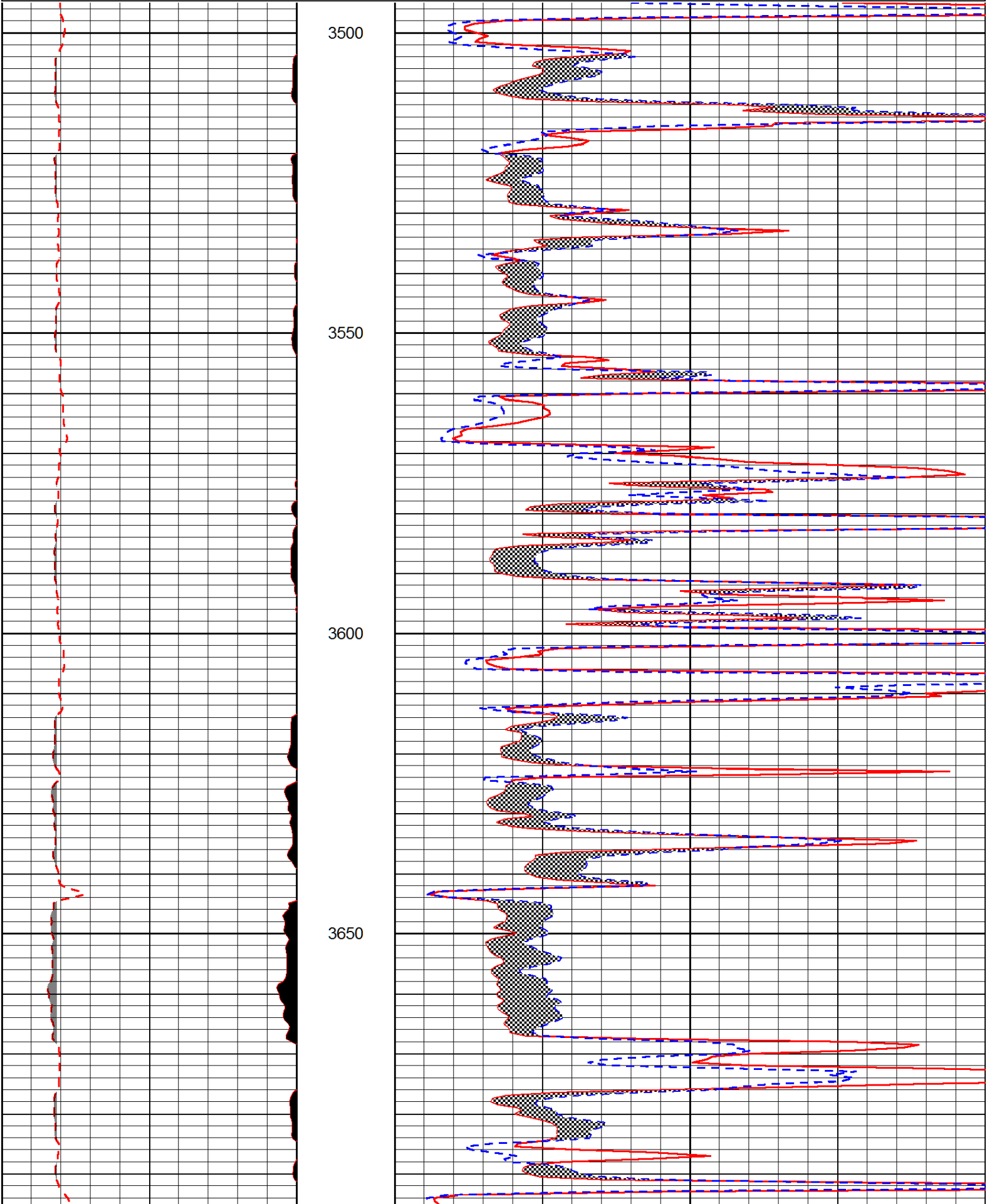
Comments

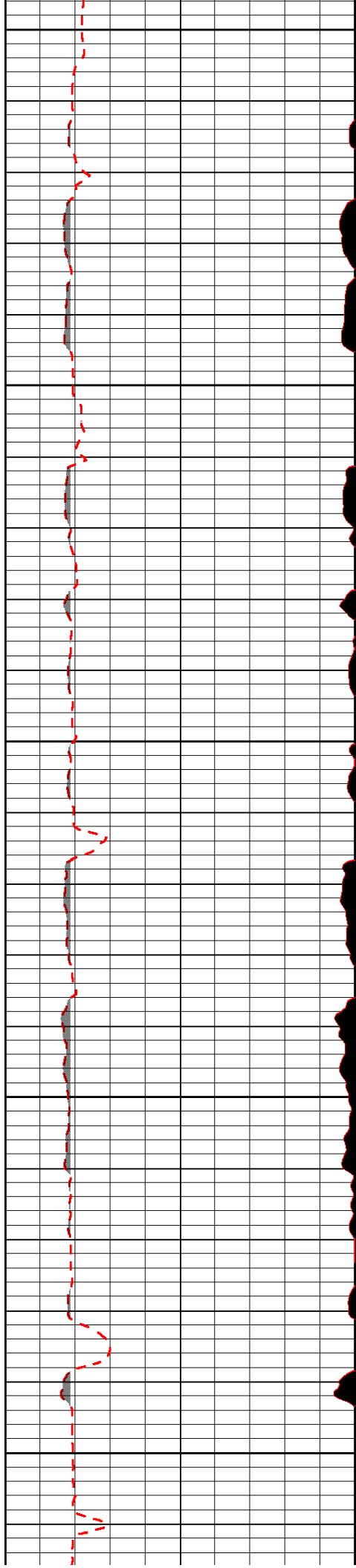
Thank you for using Log-Tech, Inc.
 (785) 625-3858
 Wakeeney,
 9 South on Hwy 283 to R Rd, 12 West to 130th, 7 South to Y Rd,
 1 West, 1 South, 1 West, 1 South,
 West & South into

Database File: palomino_120812hd.db
 Dataset Pathname: rag/palmel
 Presentation Format: micro
 Dataset Creation: Sat Dec 08 06:25:11 2012
 Charted by: Depth in Feet scaled 1:240

6	MCAL (in)	16
2.875	Mud Cake (in)	7.875

0	Micro Inverse 1 X 1 (Ohm-m)	40
0	Micro Normal 2" (Ohm-m)	40





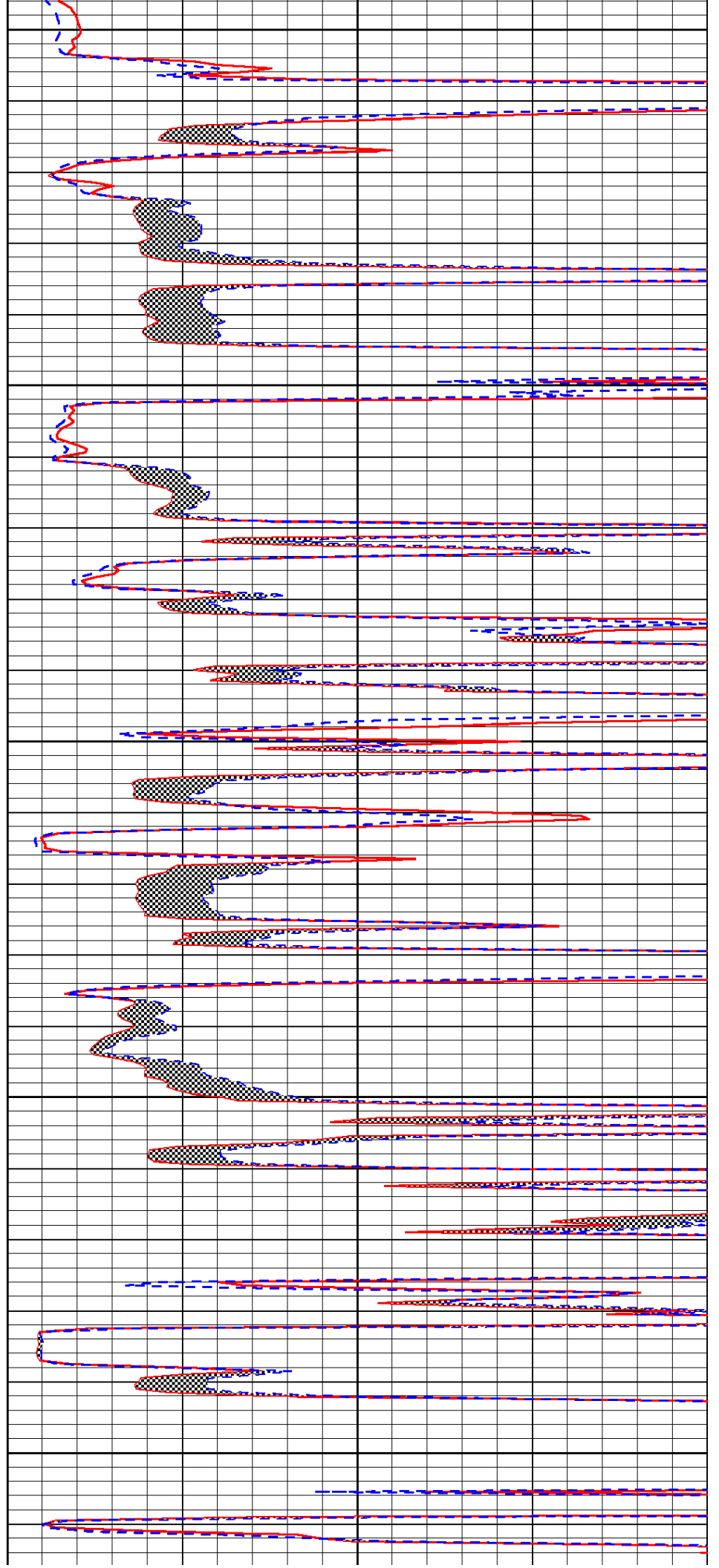
3700

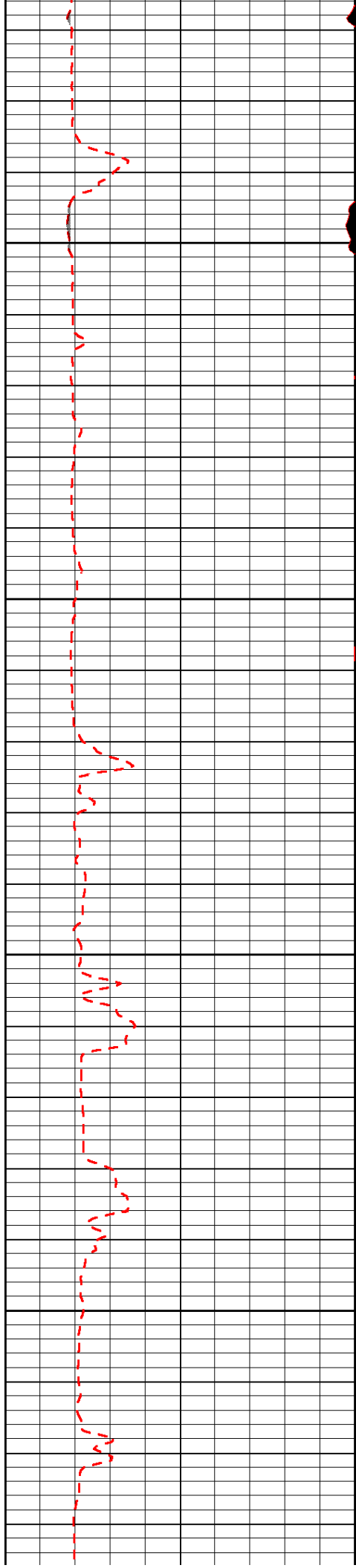
3750

3800

3850

3900



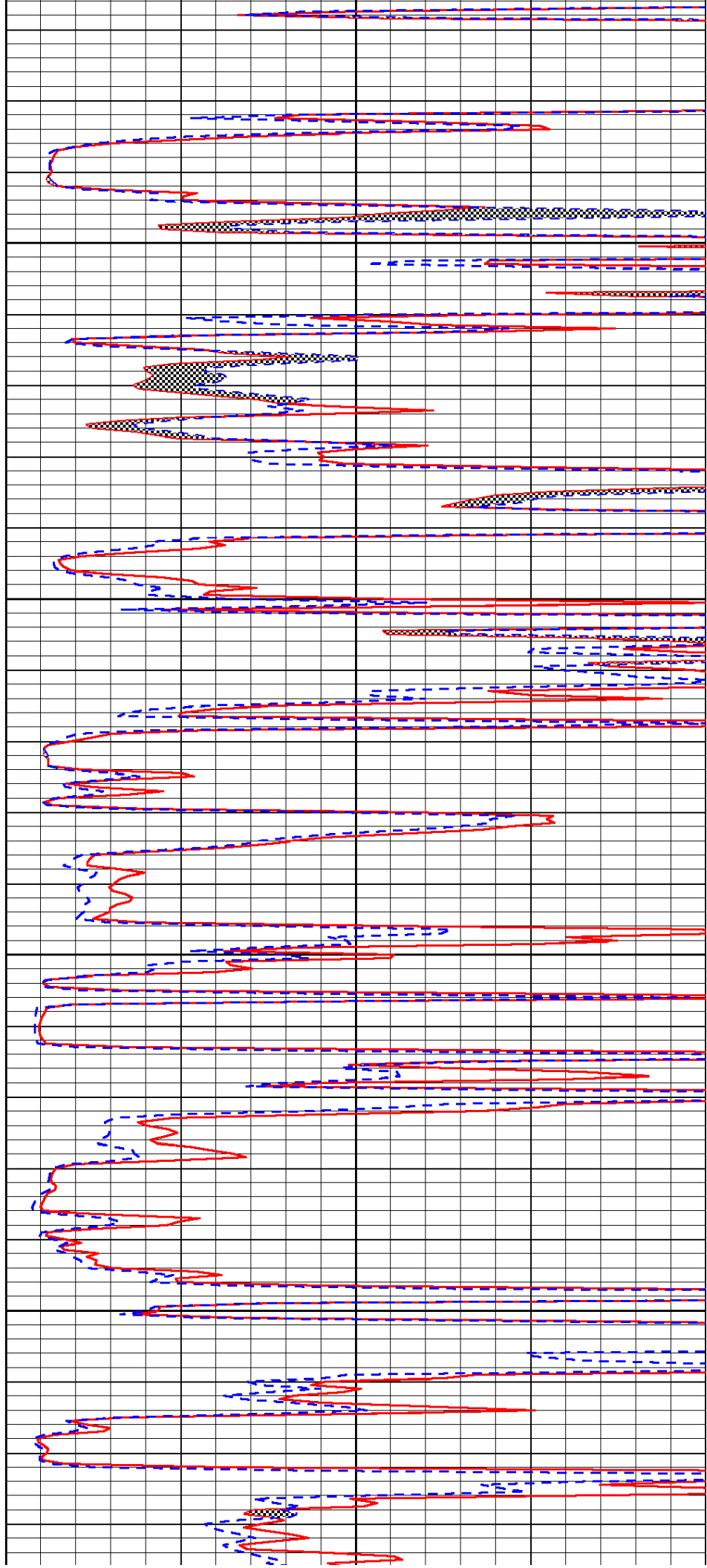


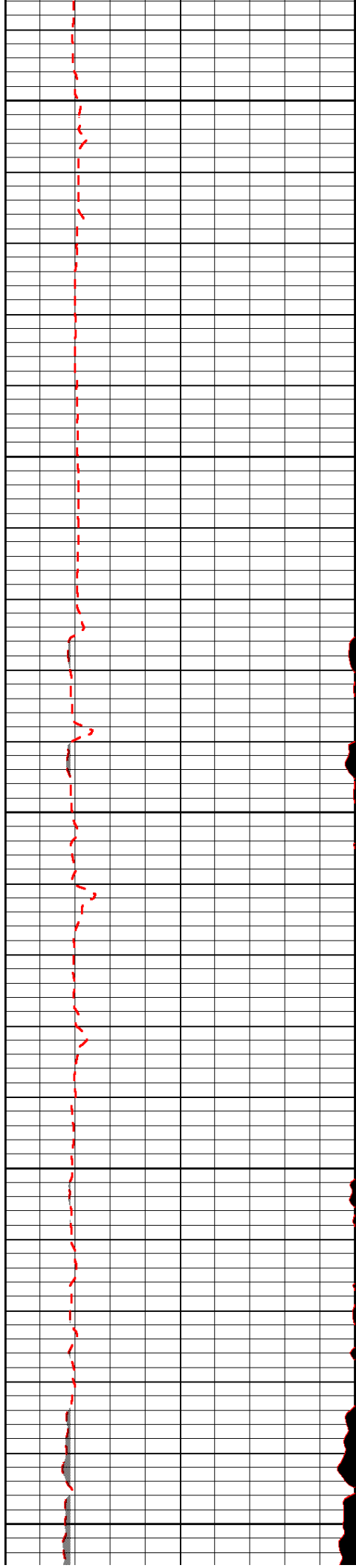
3950

4000

4050

4100





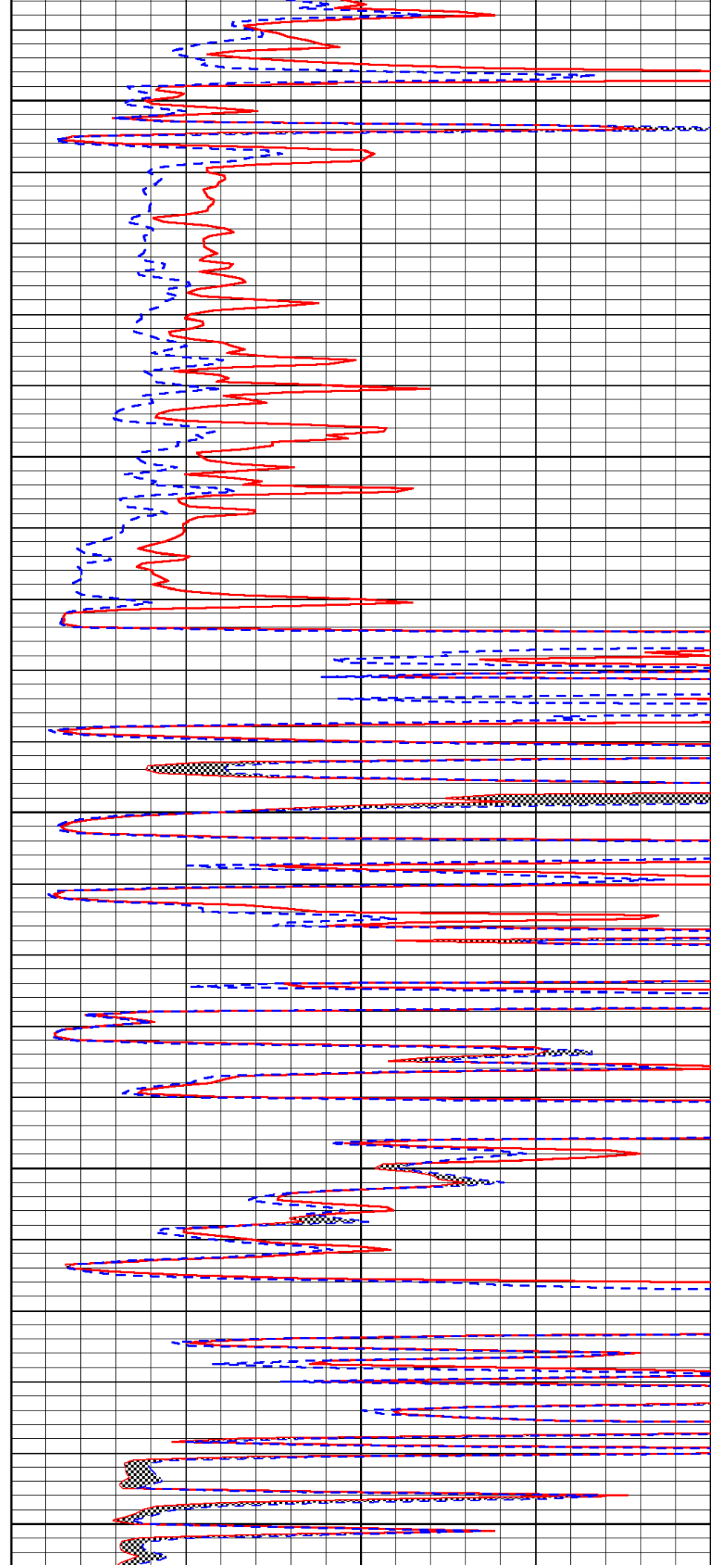
4150

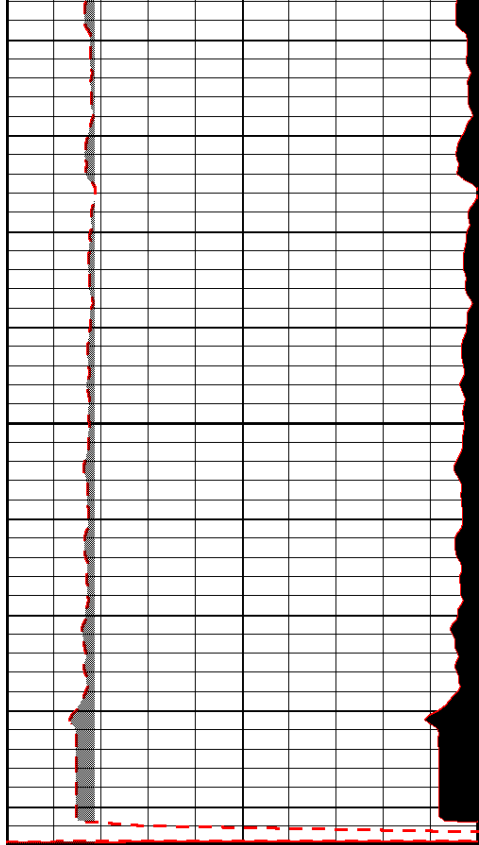
4200

4250

4300

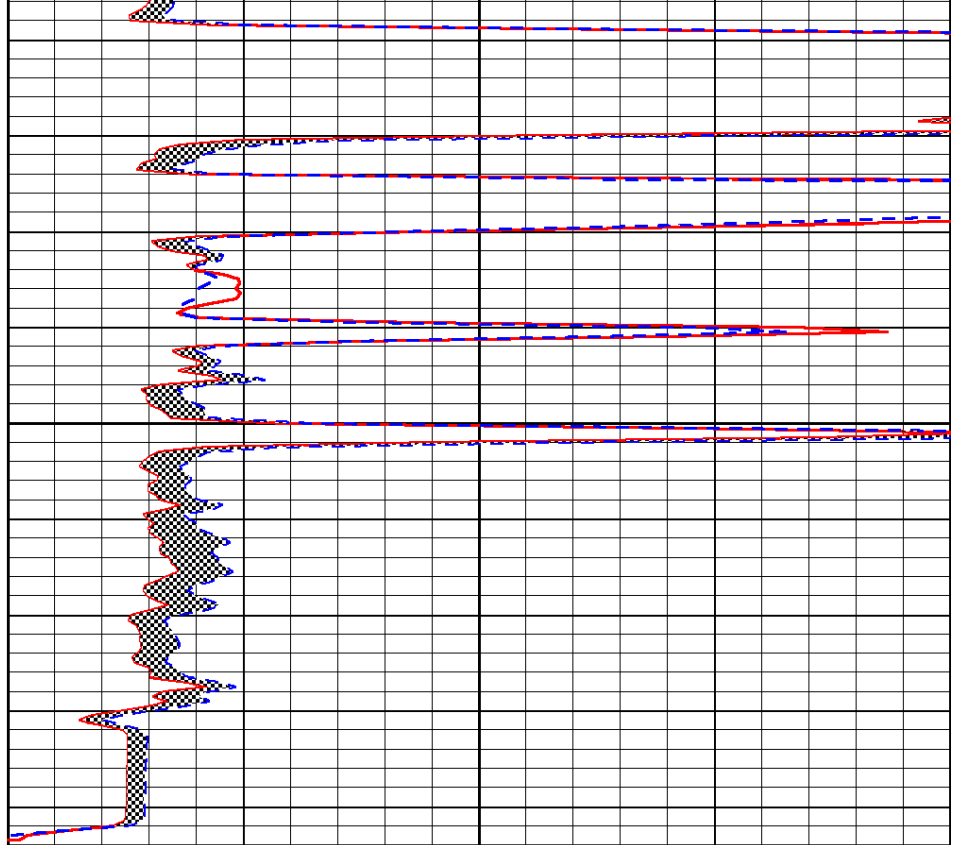
4350





6	MCAL (in)	16
2.875	Mud Cake (in)	7.875

4400



0	Micro Inverse 1 X 1 (Ohm-m)	40
0	Micro Normal 2" (Ohm-m)	40