



Pioneer Energy Services

Dual Induction Log

15-063-22064-00-00

API No.

Company Palomino Petroleum, Inc.

Well Polly #1

Field Wildcat

County Gove State Kansas

Location 1485' FNL & 511' FEL

Sec: 14 Twp: 15S Rge: 26W

Permanant Datum Ground Level Elevation 2390

Log Measured From Kelly Bushing 5 Ft. Above Perm. Datum

Drilling Measured From Kelly Bushing

Other Services
CNL/CDL
MEL

Elevation
K.B. 2395
D.F.
G.L. 2390

Date 11/28/2012

Run Number One

Depth Driller 4400

Depth Logger 4400

Bottom Logged Interval 4399

Top Log Interval 200

Casing Driller 8.625 @ 219

Casing Logger 216

Bit Size 7.875

Type Fluid in Hole Chemical

Salinity,ppm CL 3700

Density / Viscosity 9.45 48

pH / Fluid Loss 9.0 8.0

Source of Sample Flowline

Rm @ Meas. Temp 0.60 @ 64

Rmf @ Meas. Temp 0.45 @ 64

Rmc @ Meas. Temp 0.81 @ 64

Source of Rmf / Rmc Charts

Rm @ BHT 0.31 @ 122

Operating Rig Time 4 Hours

Max Rec. Temp. F 122

Equipment Number 91

Location Hays

Recorded By D. Schmidt

Witnessed By Jerry A. Smith

<<< Fold Here >>>

All interpretations are opinions based on inferences from electrical or other measurements and we cannot and do not guarantee the accuracy or correctness of any interpretation, and we shall not, except in the case of gross or willful negligence on our part, be liable or responsible for any loss, costs, damages, or expenses incurred or sustained by anyone resulting from any interpretation made by any of our officers, agents or employees. These interpretations are also subject to our general terms and conditions set out in our current Price Schedule.

Comments

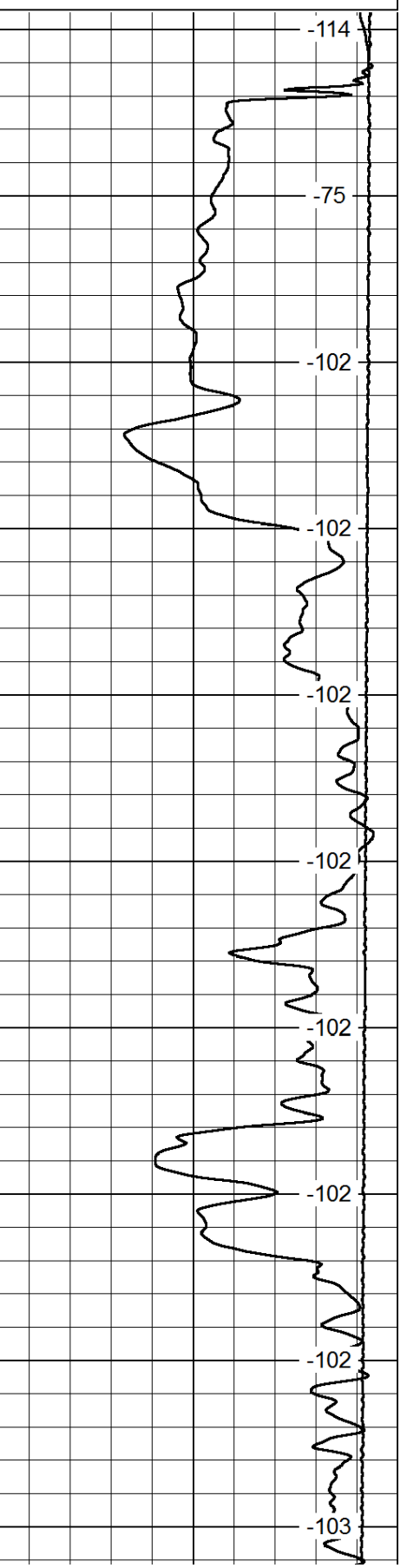
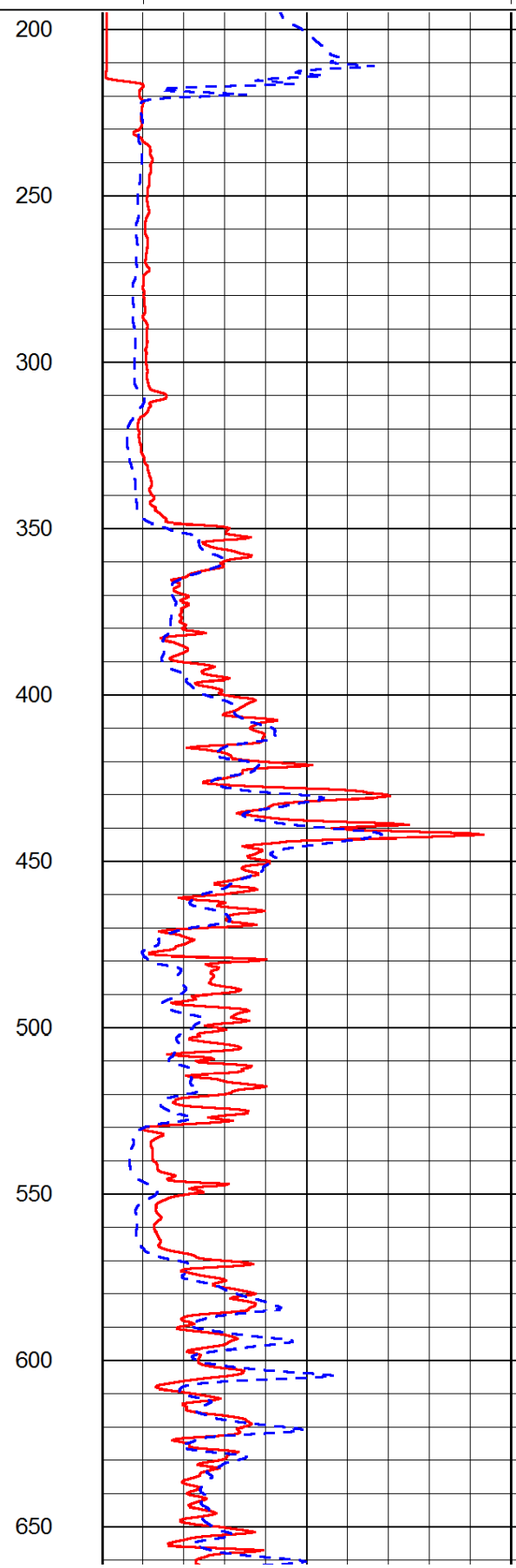
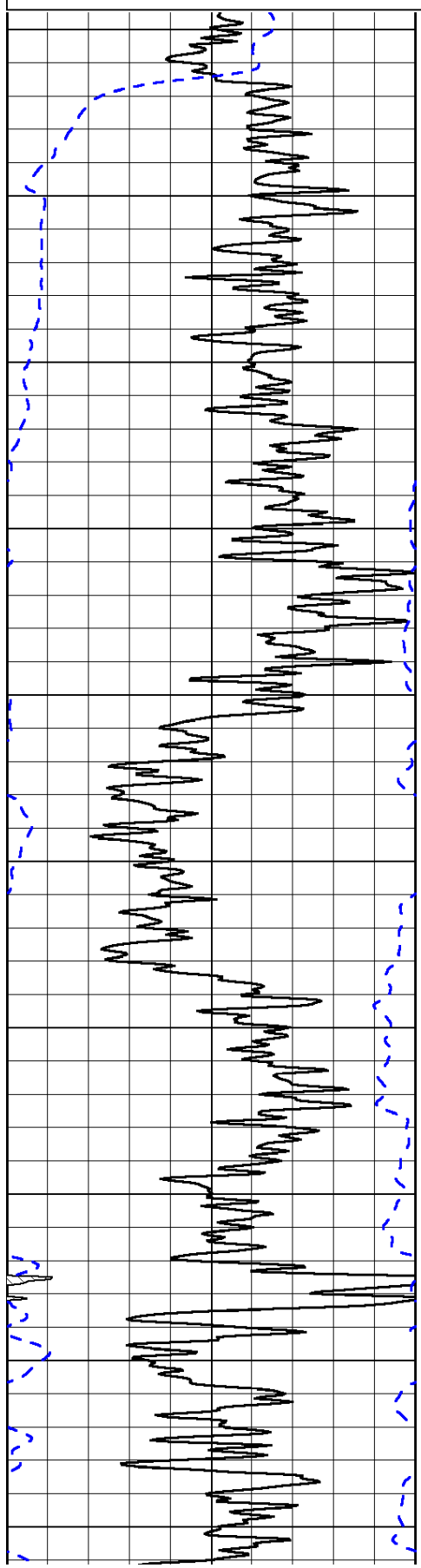
Thank you for using Pioneer Energy Services
www.pioneerenergy.com
 785 625 3858
 Wakeeney,
 9 1/2 South on Hwy 283 to R Rd, 11 West to 130th, 7 South to Y Rd,
 1 West to 120th, 1 South to Z Rd, 1 West to 110th, 1 West,
 1 South, East into

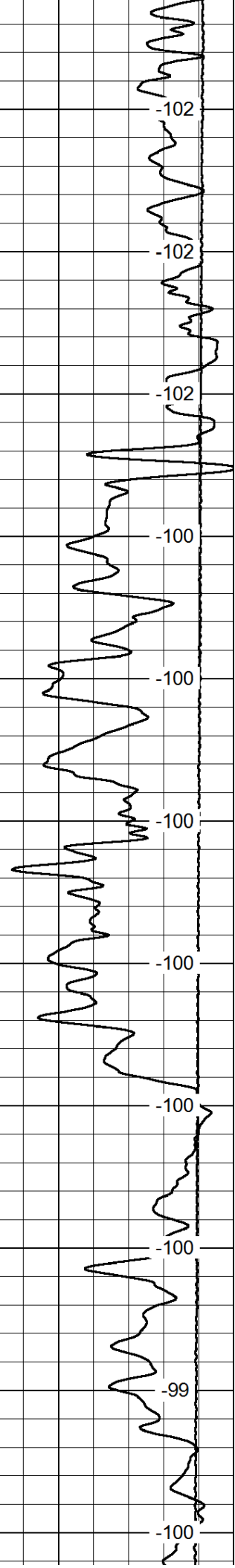
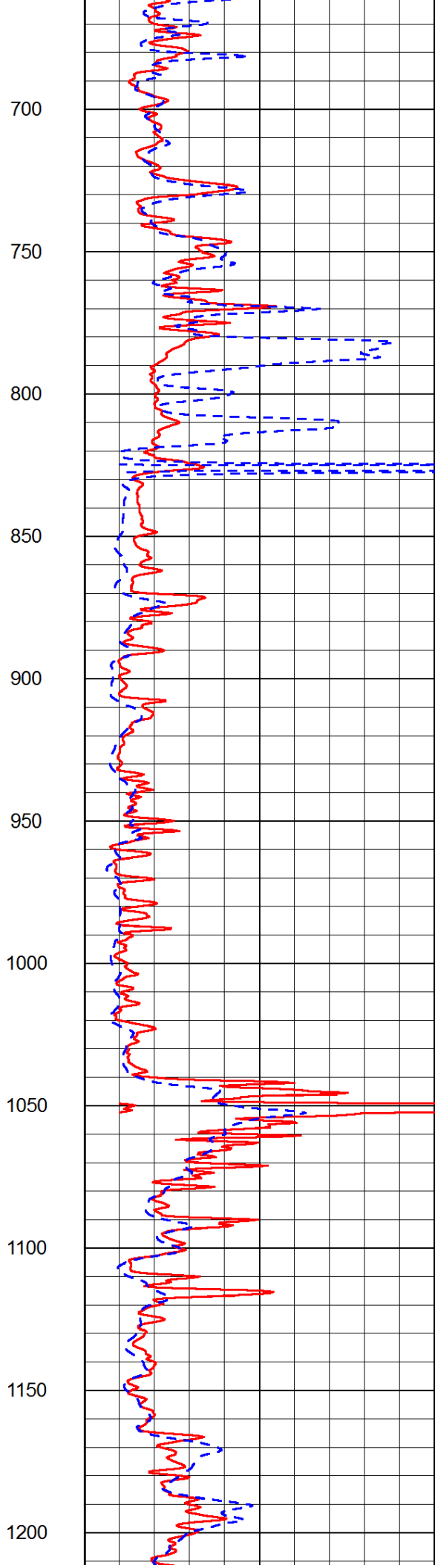
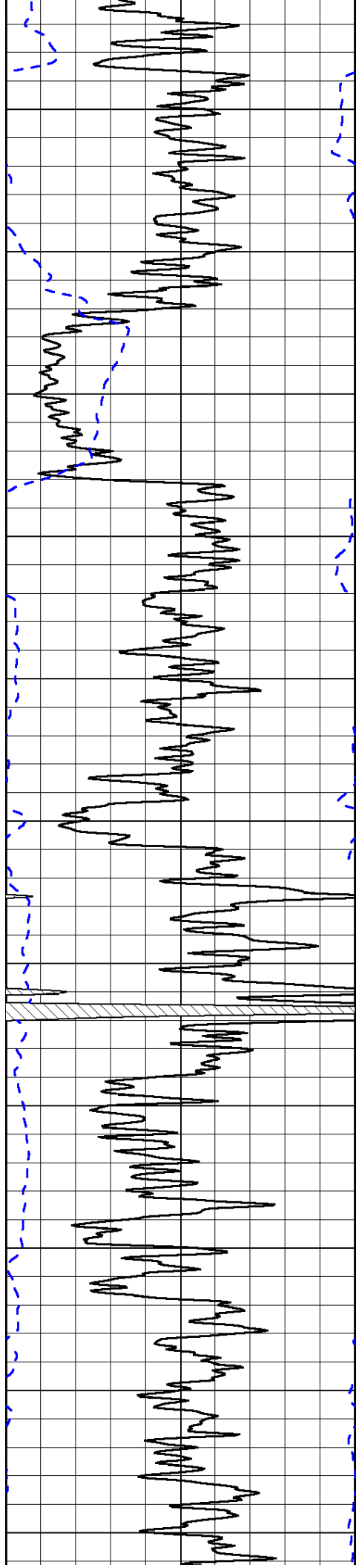
Database File: c:\warrior\data\palomino_polly #1\palomino_112912hd.db
 Dataset Pathname: dil\palstack
 Presentation Format: dil2in
 Dataset Creation: Wed Nov 28 17:35:23 2012
 Charted by: Depth in Feet scaled 1:600

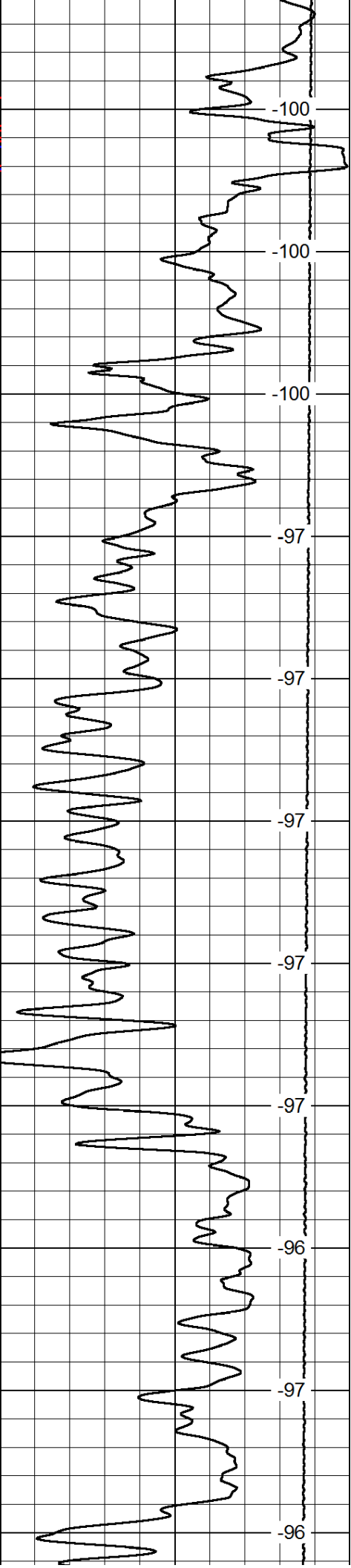
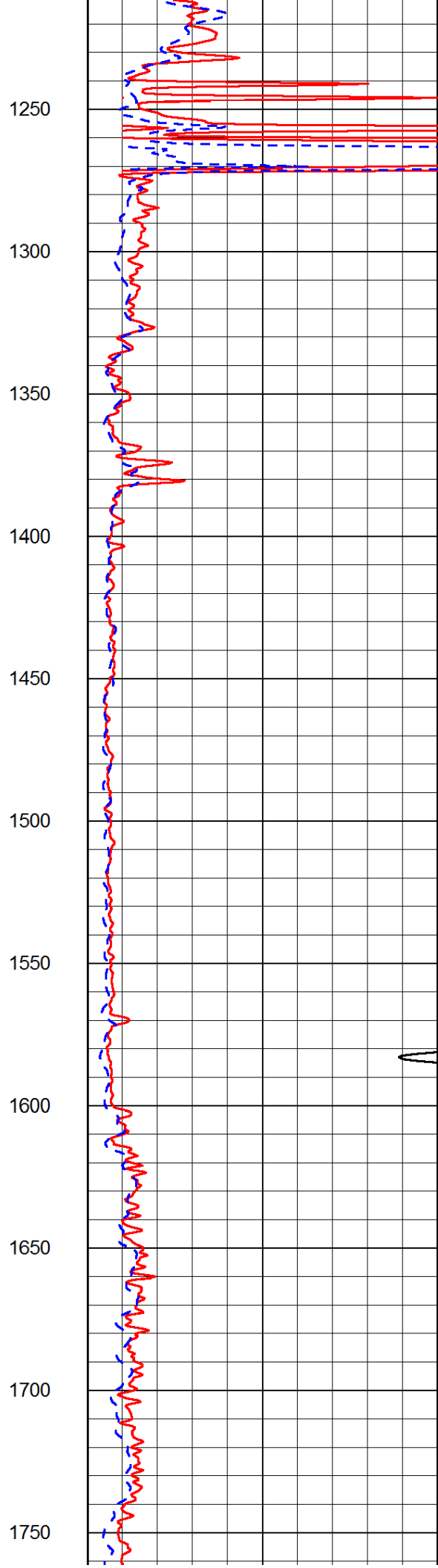
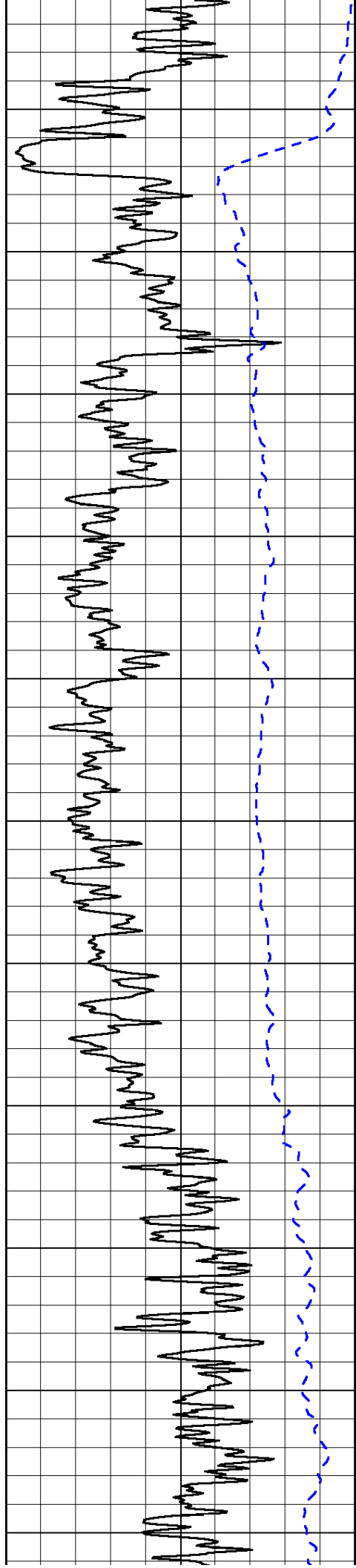
0	Gamma Ray	150
-200	SP (mV)	0

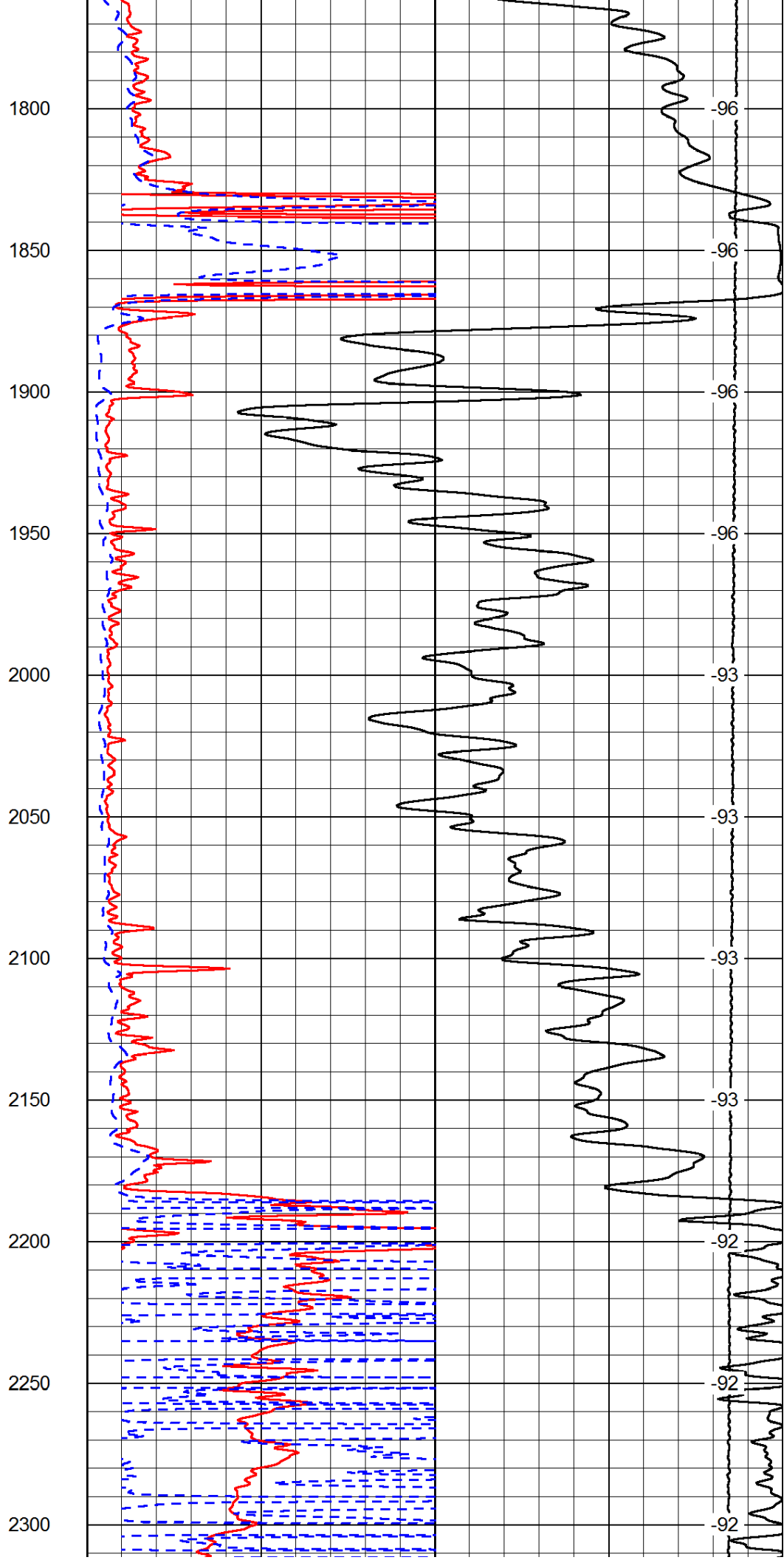
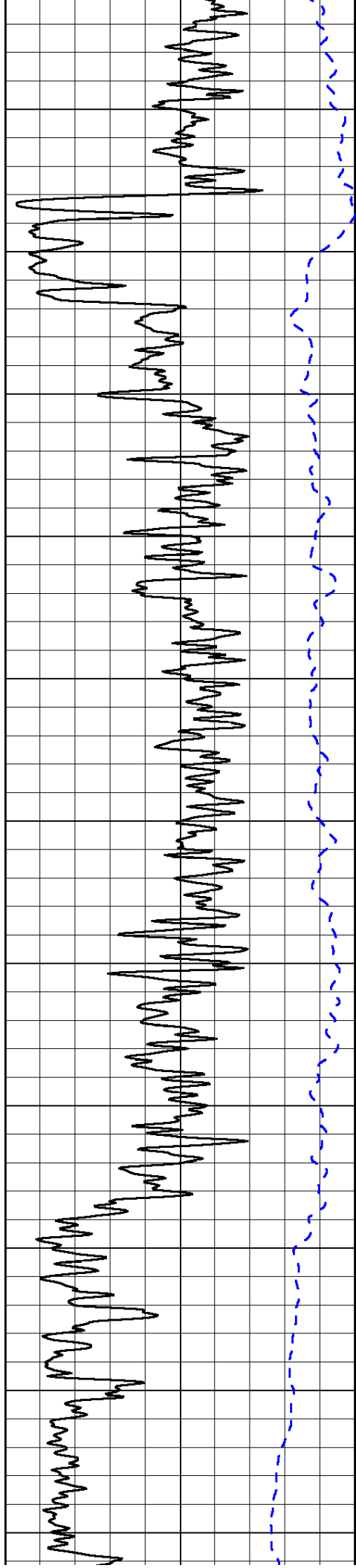
0	Shallow Resistivity	50
0	Deep Resistivity	50
1000	Conductivity	0
15000	Line Tension	0
50	Shallow Resistivity	500
50	Deep Resistivity	500

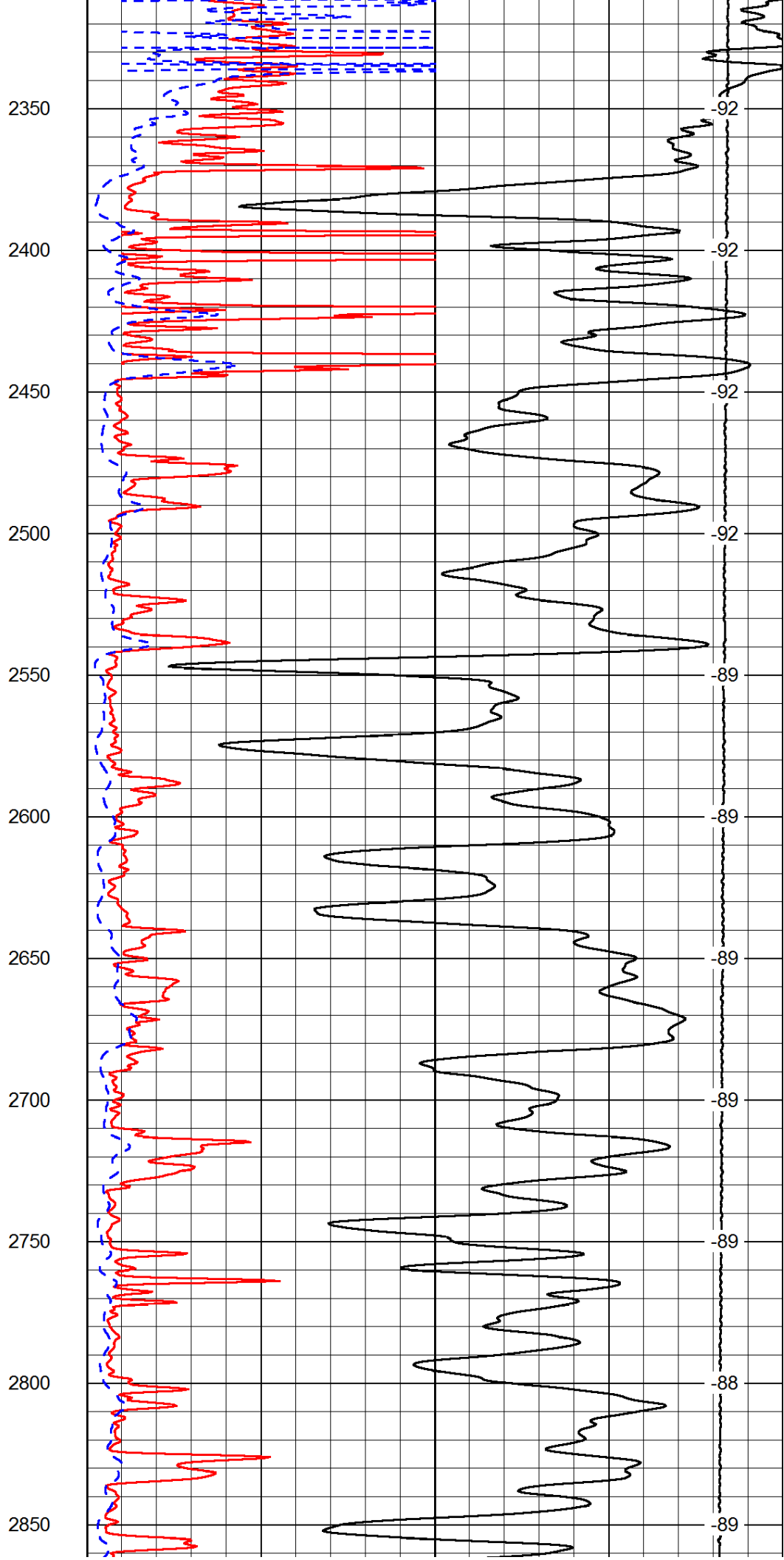
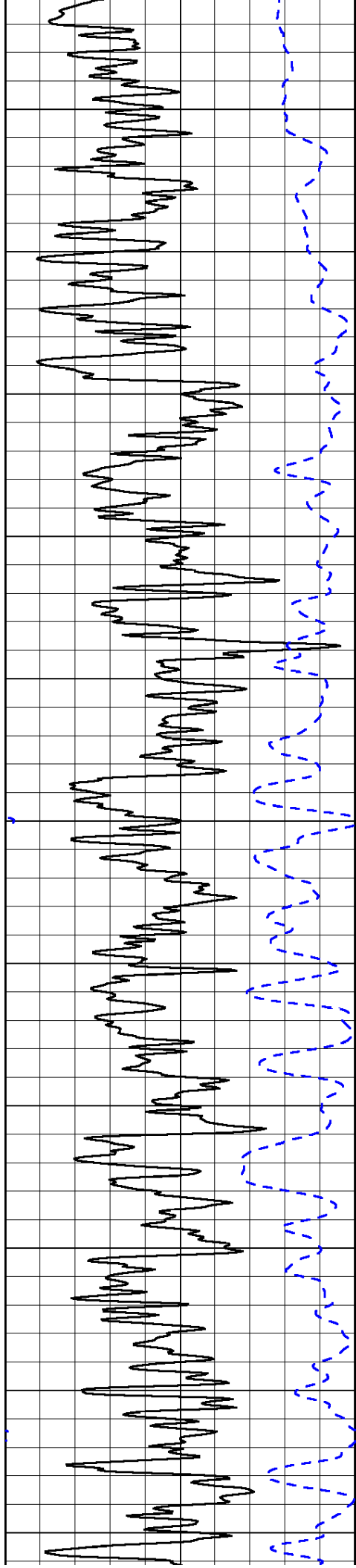
LSPD

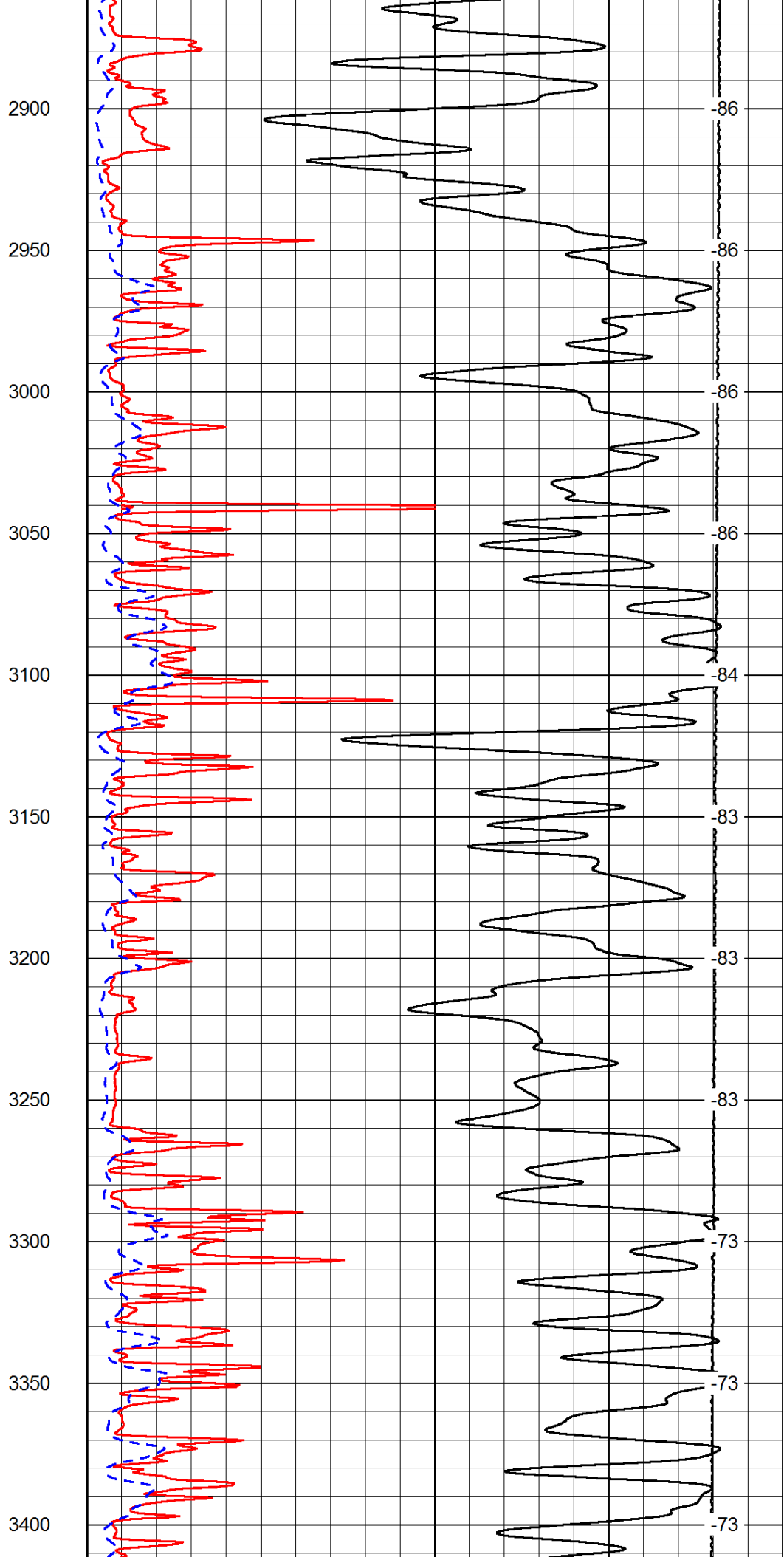
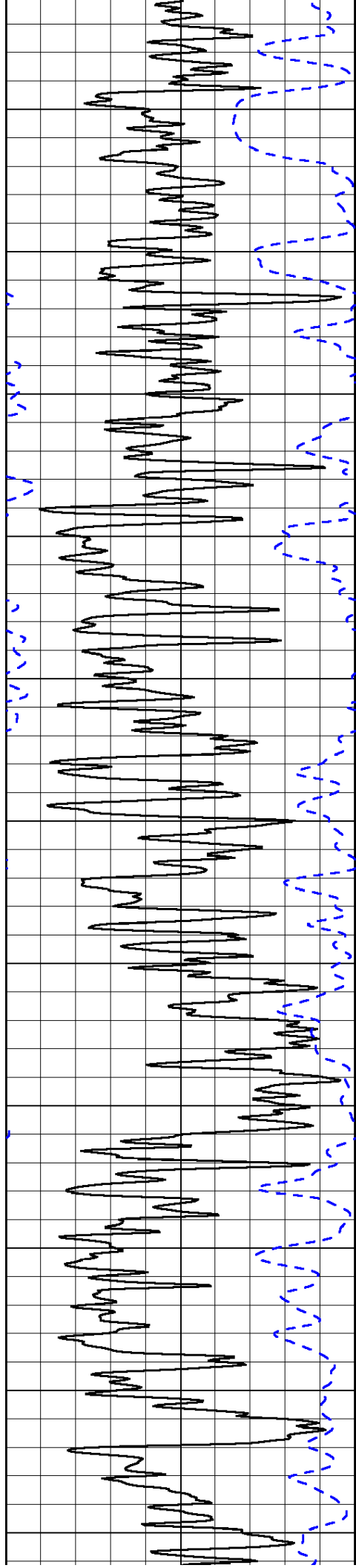


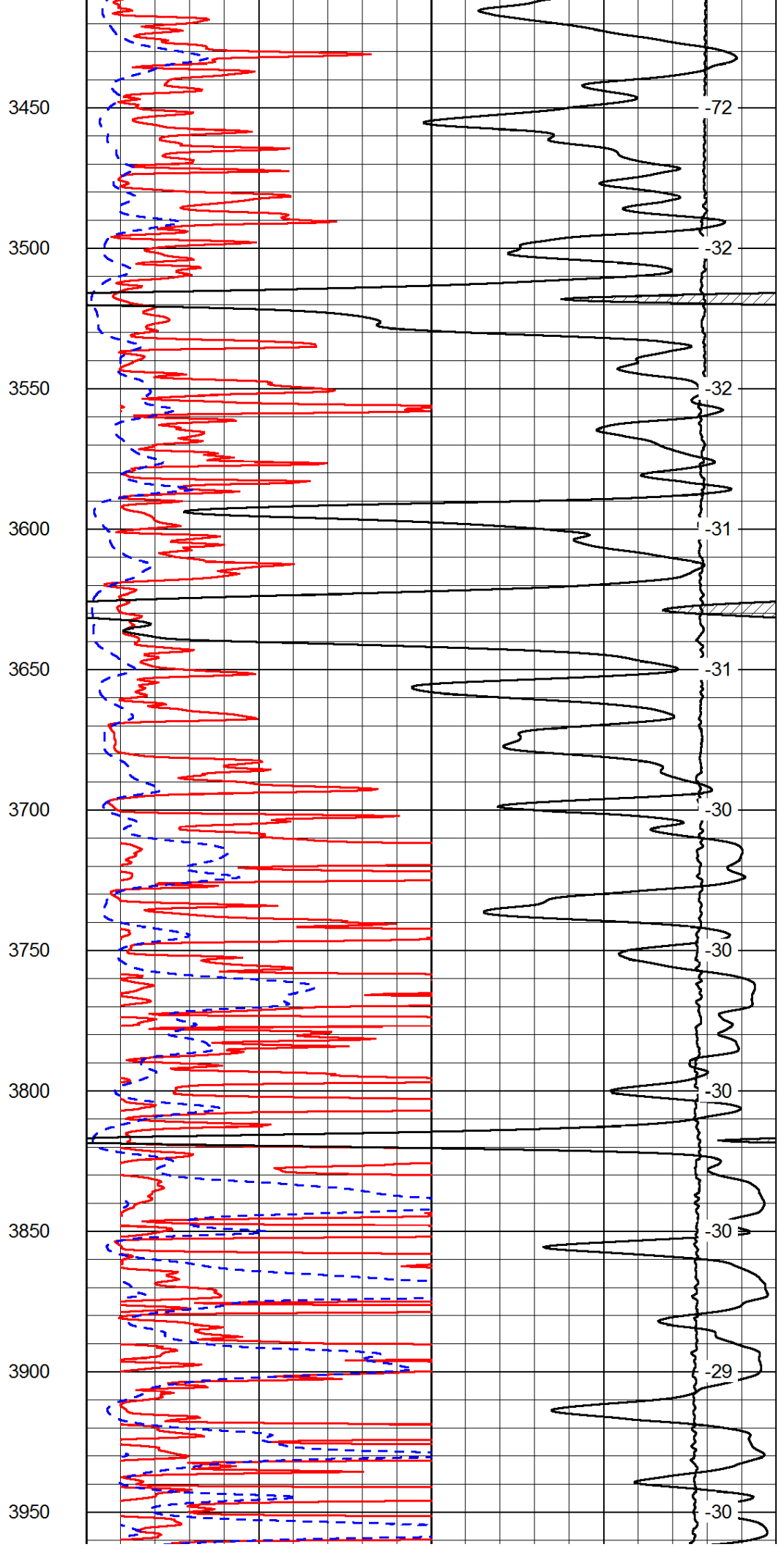
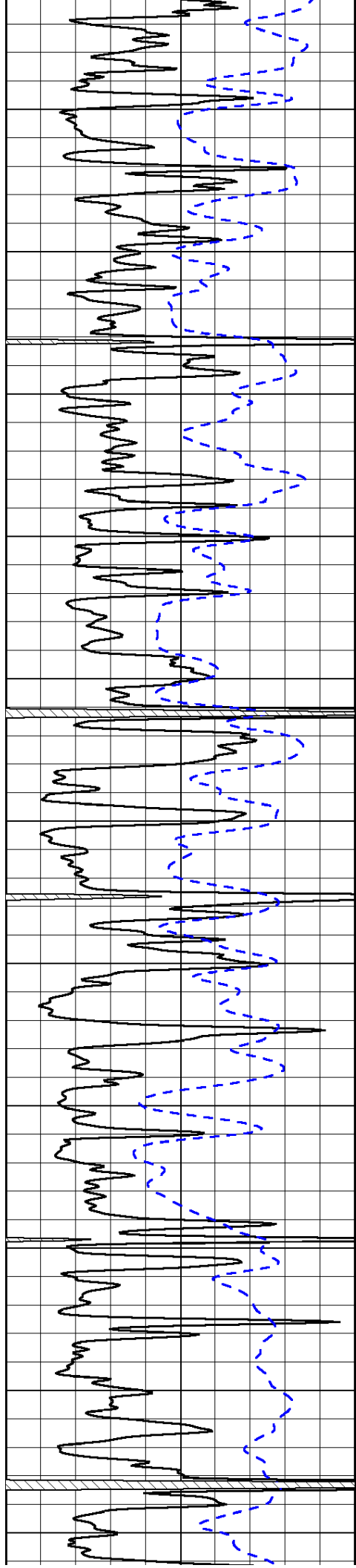


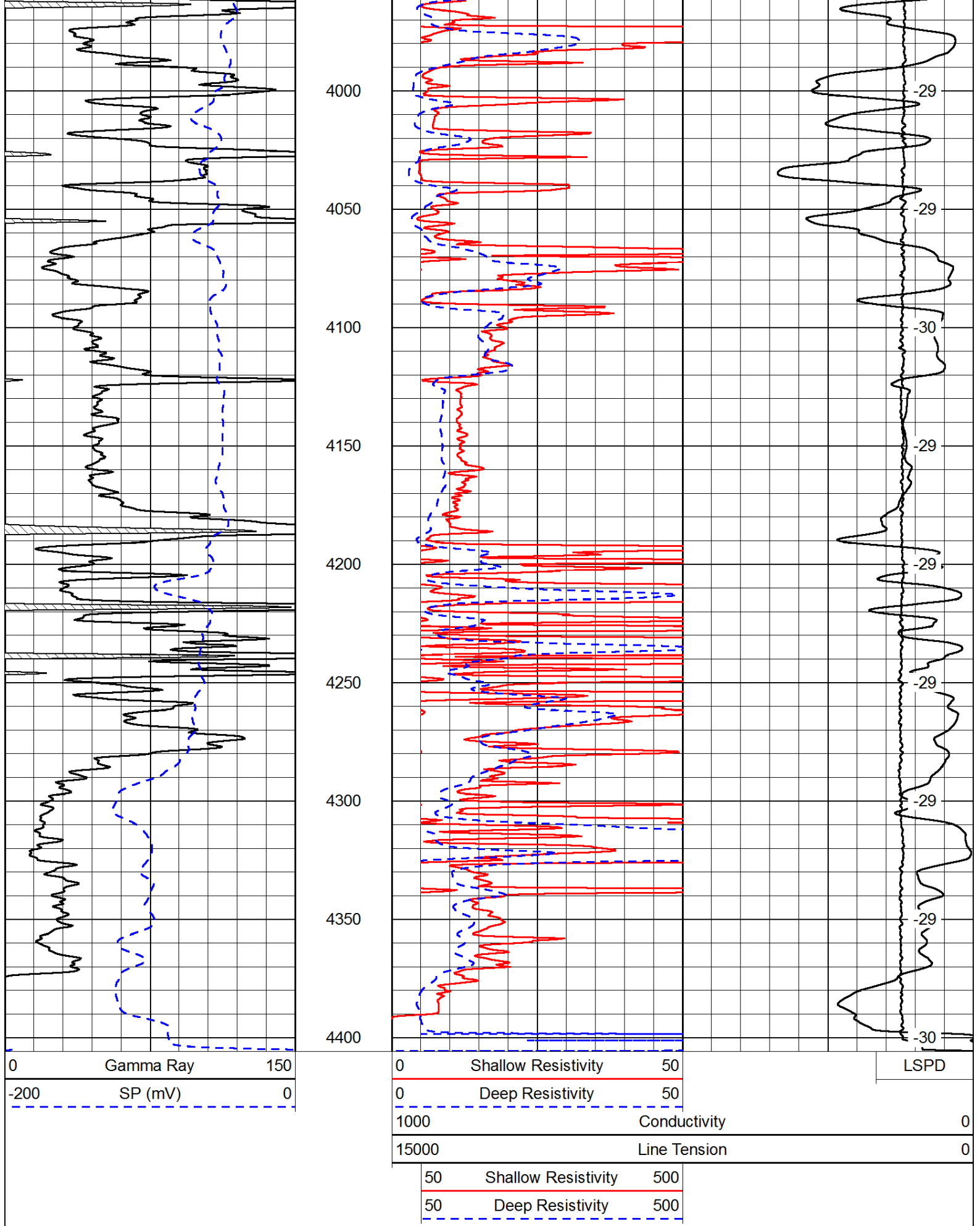










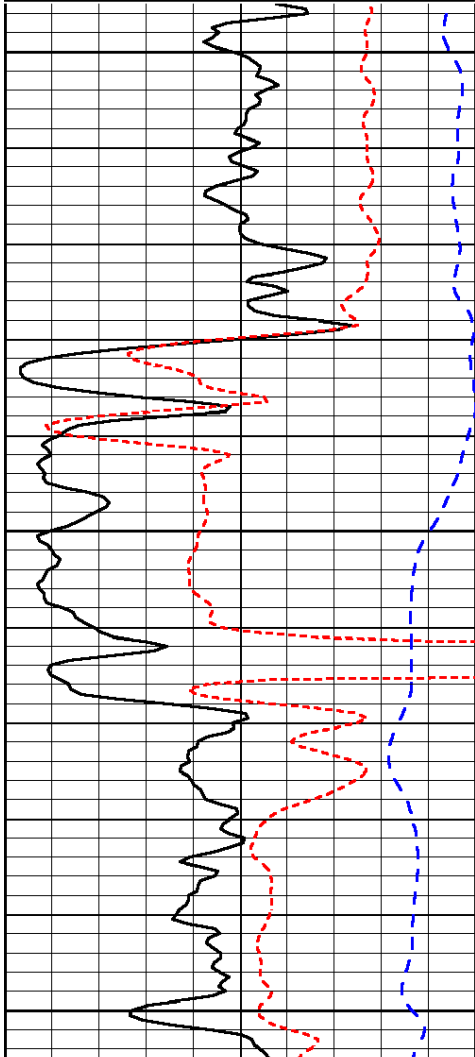


Presentation Format: dil
 Dataset Creation: Wed Nov 28 17:35:23 2012
 Charted by: Depth in Feet scaled 1:240

0	Gamma Ray	150
-200	SP (mV)	0
-160	RxoRt	40

0.2	Deep Resistivity	2000
0.2	Medium Resistivity	2000
0.2	Shallow Resistivity	2000
15000	Line Tension	0

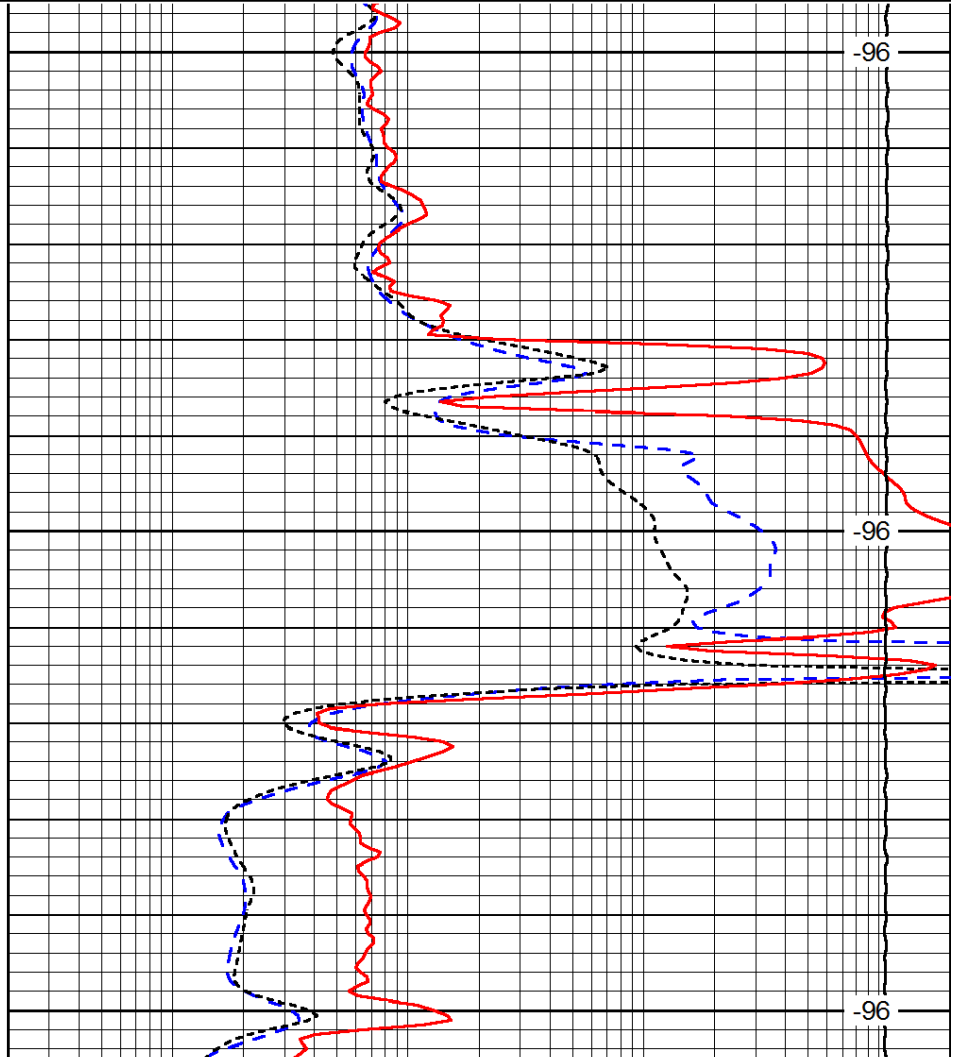
LSPD



1800

1850

1900



-96

-96

-96

0	Gamma Ray	150
-200	SP (mV)	0
-160	RxoRt	40

0.2	Deep Resistivity	2000
0.2	Medium Resistivity	2000
0.2	Shallow Resistivity	2000
15000	Line Tension	0

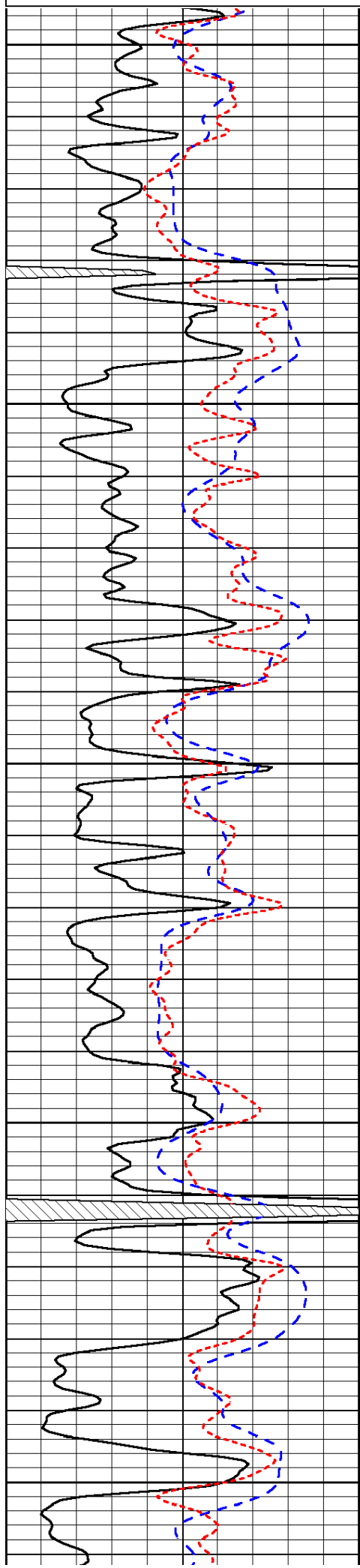
LSPD

Database File: c:\warrior\data\palomino_polly #1\palomino_112912hd.db
 Dataset Pathname: dil/palstack
 Presentation Format: dil
 Dataset Creation: Wed Nov 28 17:35:23 2012
 Charted by: Depth in Feet scaled 1:240

0	Gamma Ray	150
-200	SP (mV)	0
-160	RxoRt	40

0.2	Deep Resistivity	2000
0.2	Medium Resistivity	2000
0.2	Shallow Resistivity	2000
15000	Line Tension	0

LSPD



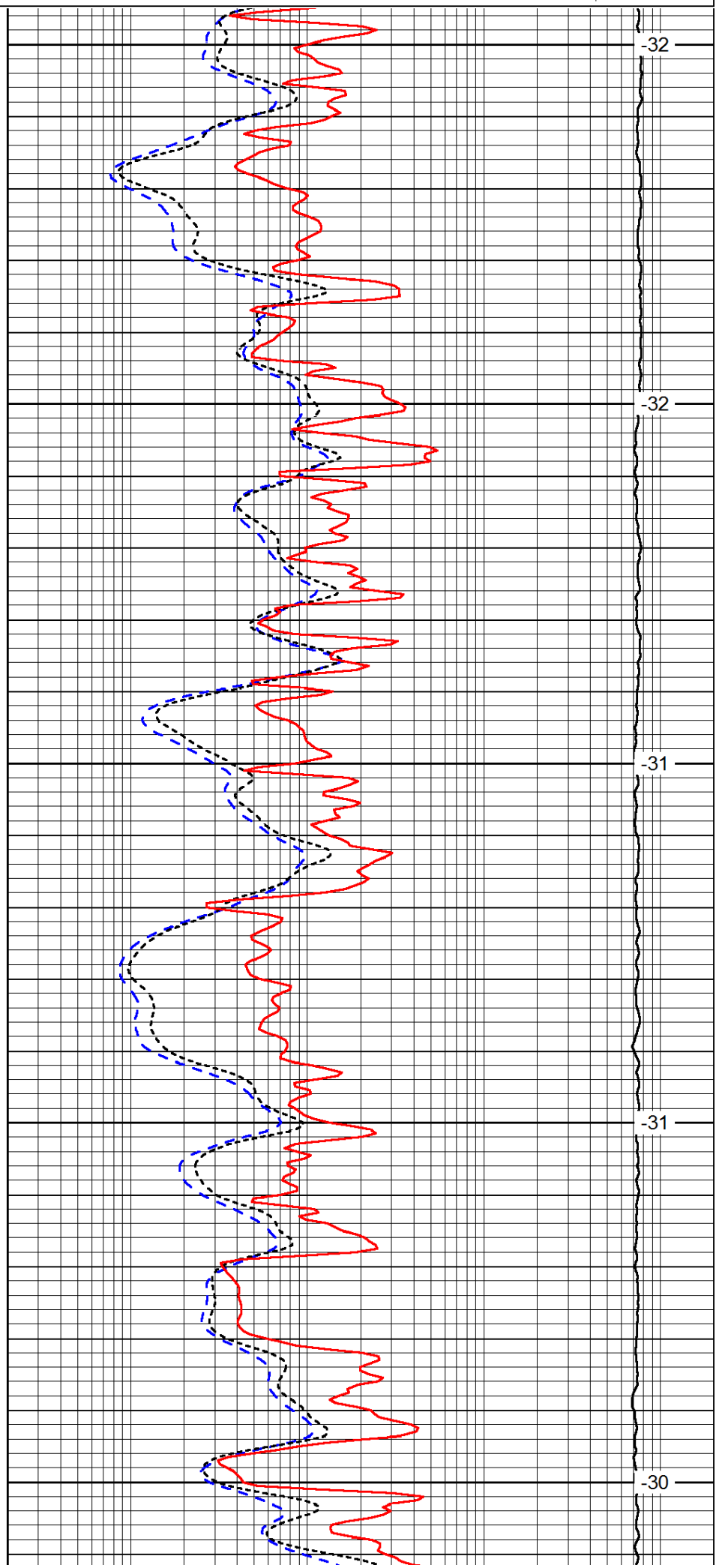
3500

3550

3600

3650

3700



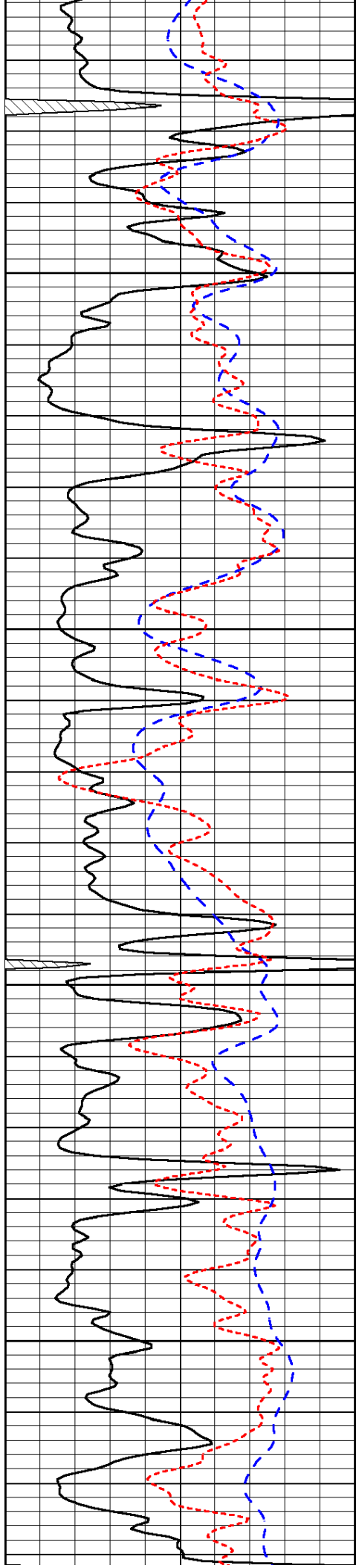
-32

-32

-31

-31

-30

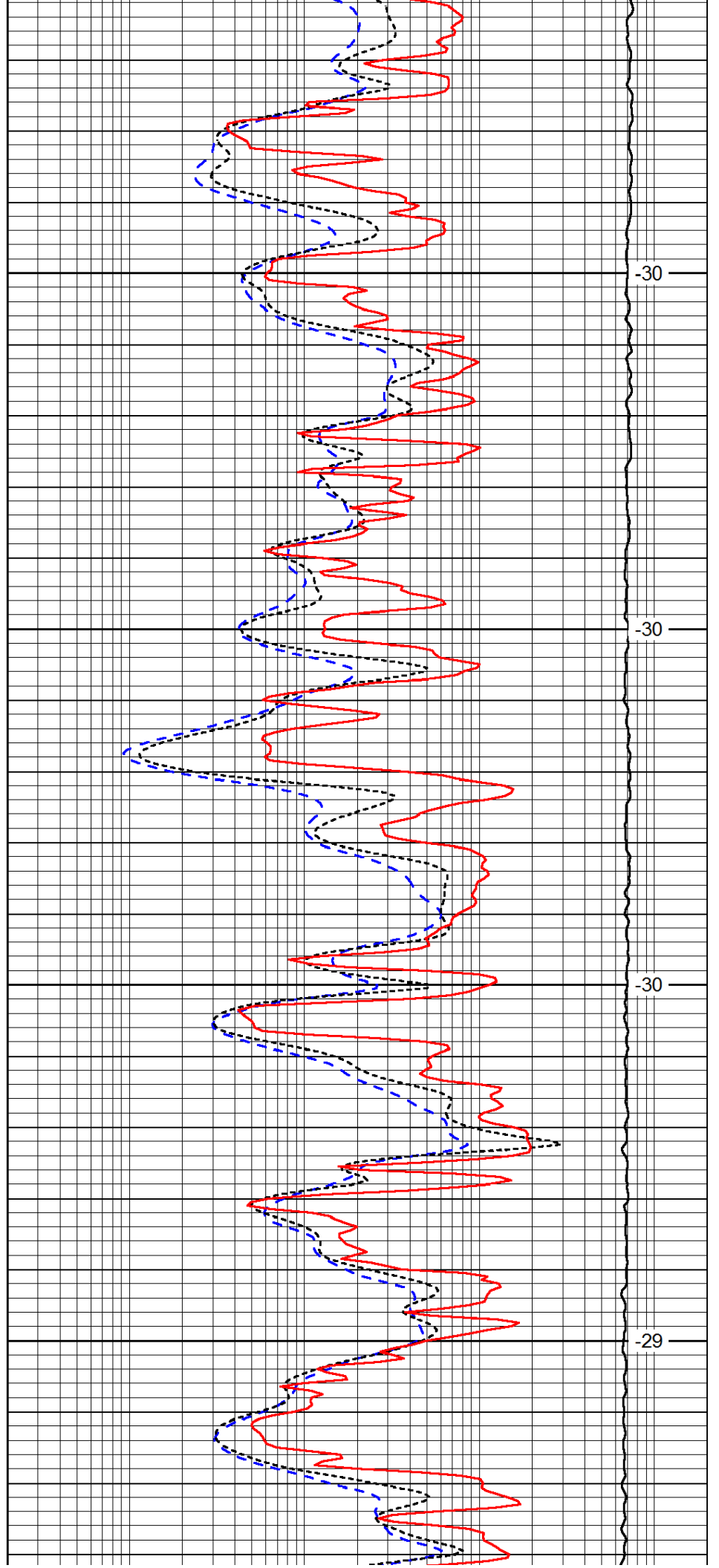


3750

3800

3850

3900

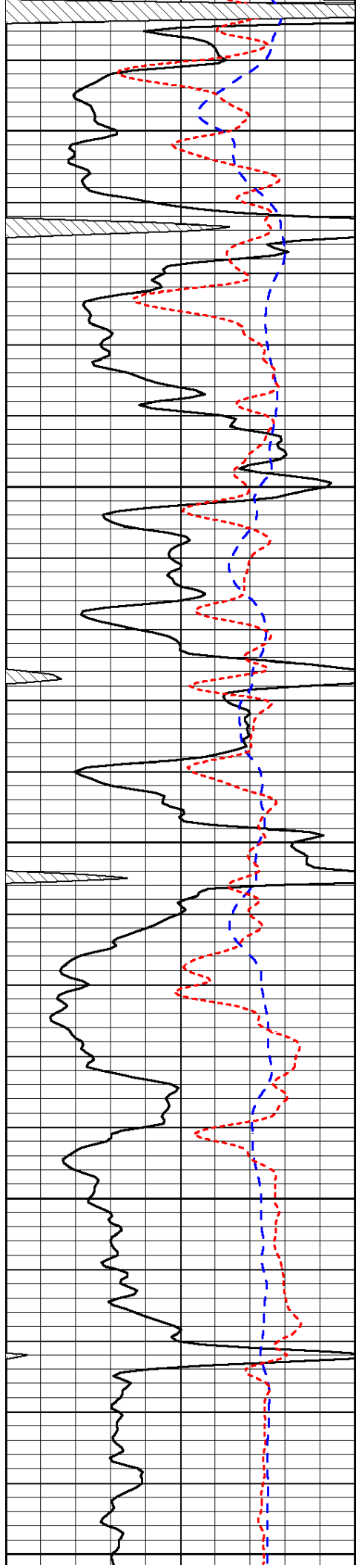


-30

-30

-30

-29



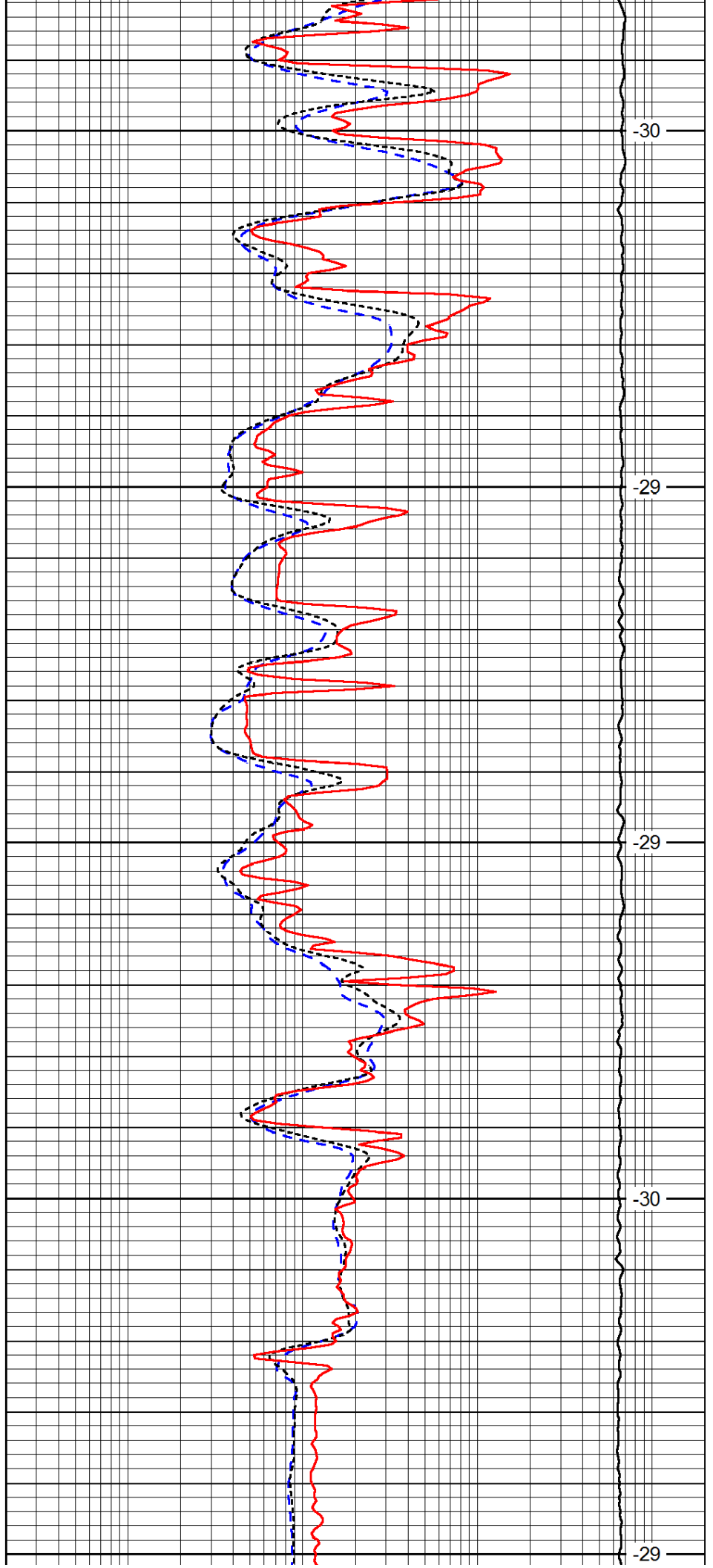
3950

4000

4050

4100

4150



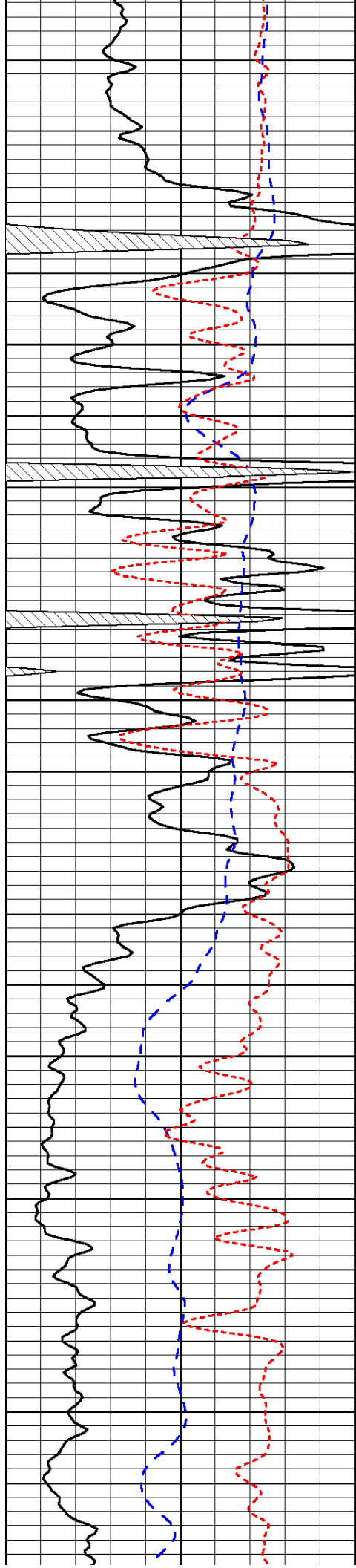
-30

-29

-29

-30

-29

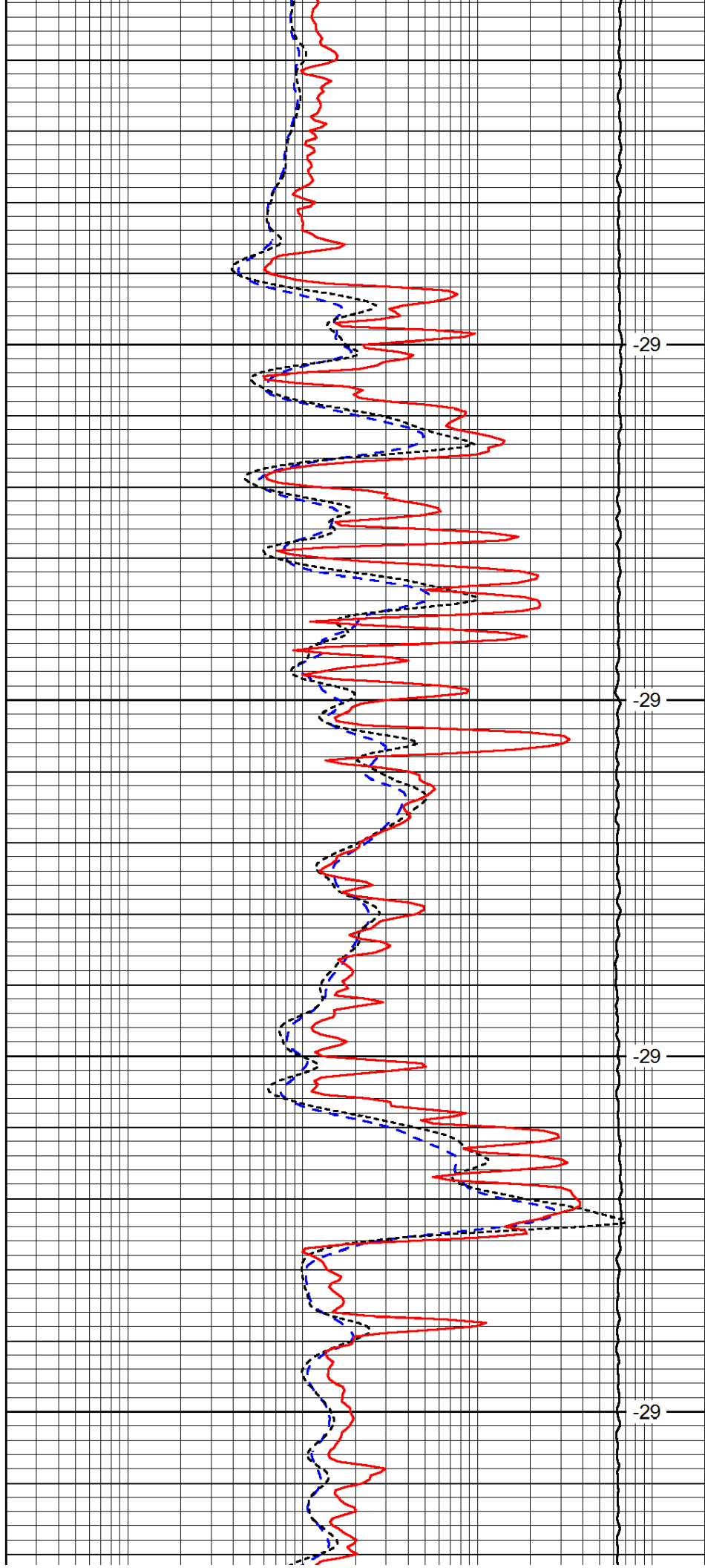


4200

4250

4300

4350

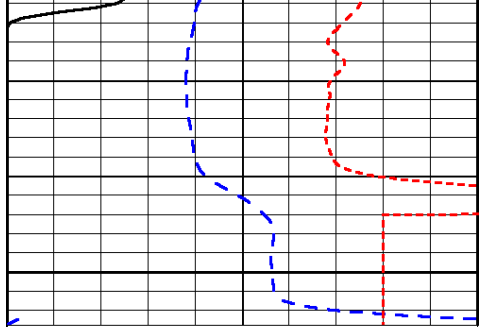


-29

-29

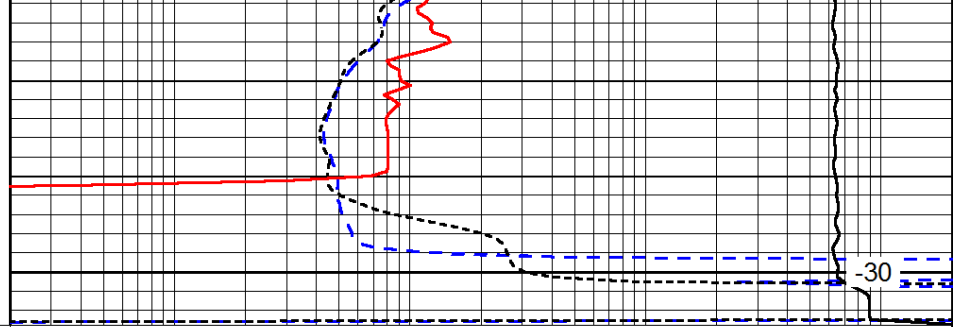
-29

-29



0	Gamma Ray	150
-200	SP (mV)	0
-160	RxoRt	40

4400



0.2	Deep Resistivity	2000
0.2	Medium Resistivity	2000
0.2	Shallow Resistivity	2000
15000	Line Tension	0

-30

LSPD