



Pioneer Energy Services

## Dual Compensated Porosity Log

15-063-22064-00-00

API No.

Company **Palomino Petroleum, Inc.**  
 Well **Polly #1**  
 Field **Wildcat**  
 County **Gove** State **Kansas**

Location **1485' FNL & 511' FEL**  
 Sec: **14** Twp: **15S** Rge: **26W**

Other Services  
CNL/CDL  
DIL

Elevation  
K.B. 2395  
D.F.  
G.L. 2390

Permanent Datum	Ground Level	Elevation 2390
Log Measured From	Kelly Bushing	5 Ft. Above Perm. Datum
Drilling Measured From	Kelly Bushing	
Date	11/28/2012	
Run Number	One	
Type Log	CNL / CDL	
Depth Driller	4400	
Depth Logger	4400	
Bottom Logged Interval	4379	
Top Logged Interval	3500	
Type Fluid In Hole	Chemical	
Salinity, PPM CL	3700	
Density	9.45	
Level	Full	
Max. Rec. Temp. F	122	
Operating Rig Time	4 Hours	
Equipment -- Location	91 Hays	
Recorded By	D. Schmidt	
Witnessed By	Jerry A. Smith	

Borehole Record				Casing Record			
Run No.	Bit	From	To	Size	Wgt.	From	To
1	12.25	00	219	8.625	24#	00	219
2	7.875	219	4400				

<<< Fold Here >>>

All interpretations are opinions based on inferences from electrical or other measurements and we cannot and do not guarantee the accuracy or correctness of any interpretation, and we shall not, except in the case of gross or willful negligence on our part, be liable or responsible for any loss, costs, damages, or expenses incurred or sustained by anyone resulting from any interpretation made by any of our officers, agents or employees. These interpretations are also subject to our general terms and conditions set out in our current Price Schedule.

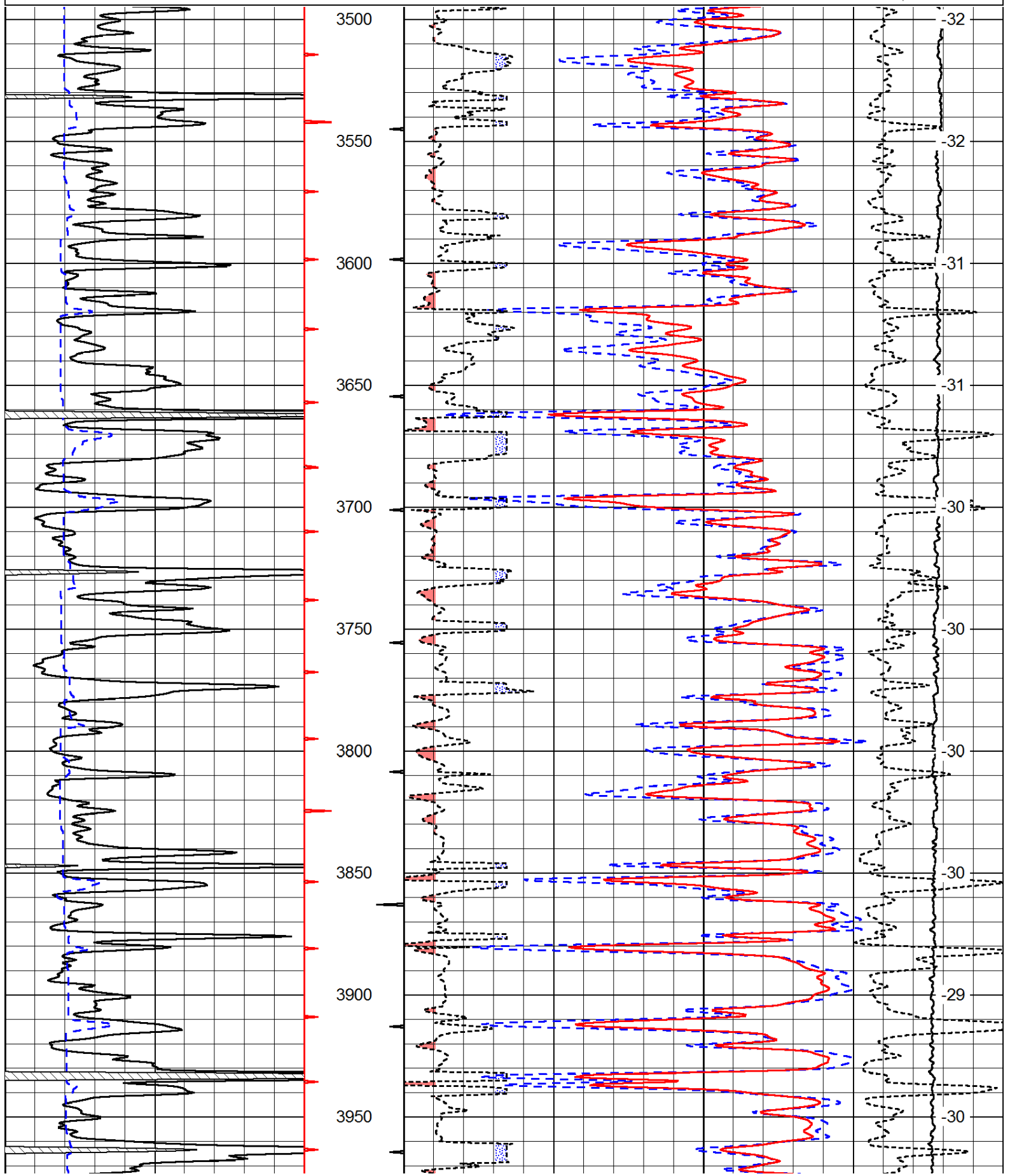
### Comments

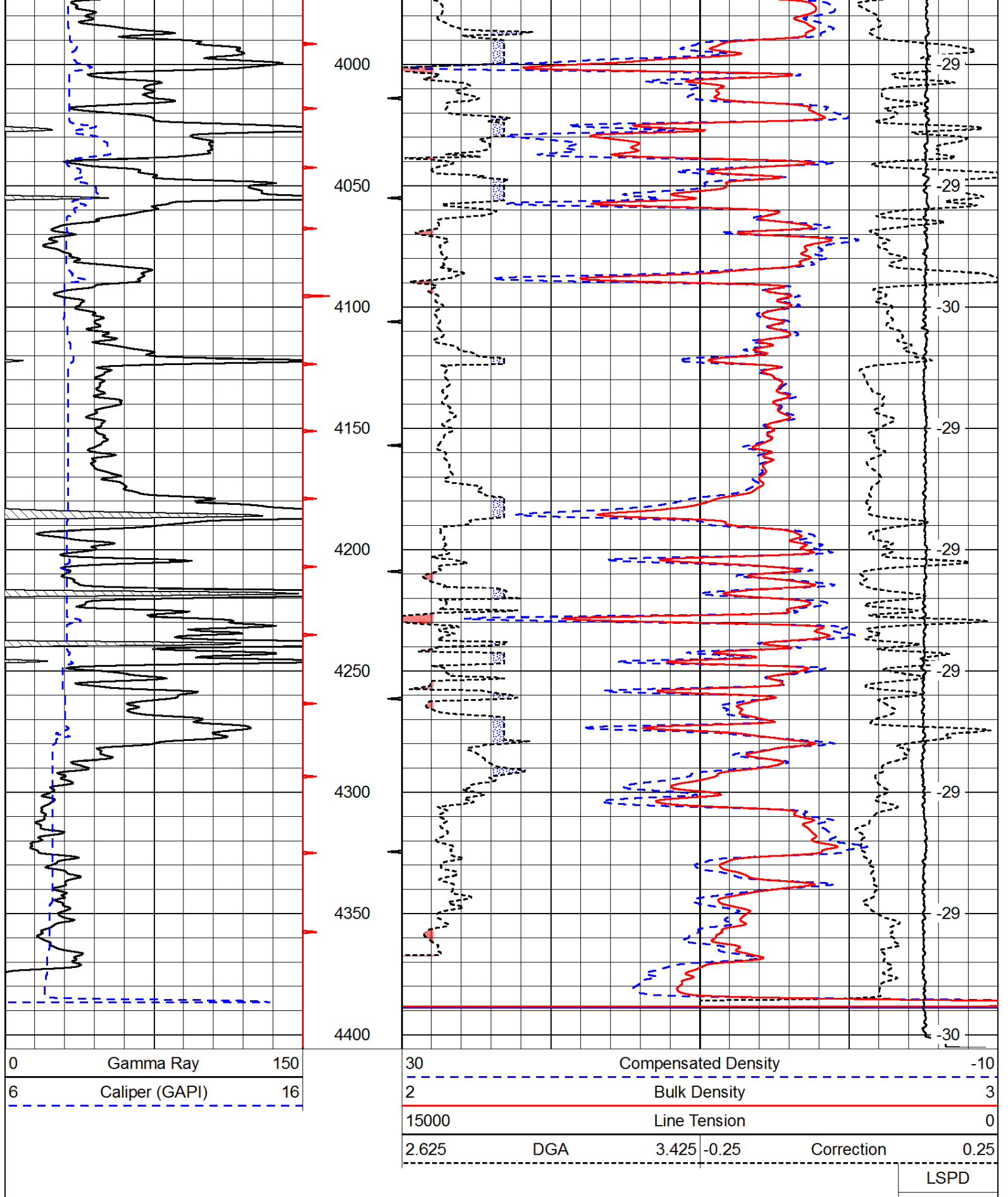
Thank you for using Pioneer Energy Services  
[www.pioneerenergy.com](http://www.pioneerenergy.com)  
 785 625 3858  
 Wakeeney,  
 9 1/2 South on Hwy 283 to R Rd, 11 West to 130th, 7 South to Y Rd,  
 1 West to 120th, 1 South to Z Rd, 1 West to 110th, 1 West,  
 1 South, East into

Database File: c:\warrior\data\palomino\_polly #1\palomino\_112912hd.db  
 Dataset Pathname: dil\palstack  
 Presentation Format: cdl  
 Dataset Creation: Wed Nov 28 17:35:23 2012  
 Charted by: Depth in Feet scaled 1:600

0	Gamma Ray	150
6	Caliper (GAPI)	16

30	Compensated Density		-10
2	Bulk Density		3
15000	Line Tension		0
2.625	DGA	3.425	-0.25
Correction			0.25
LSPD			





Database File: c:\warrior\data\palomino\_polly #1\palomino\_112912hd.db  
 Dataset Pathname: dil/palstack  
 Presentation Format: cndlspec  
 Dataset Creation: Wed Nov 28 17:35:23 2012  
 Charted by: Depth in Feet scaled 1:240

0	Gamma Ray	150	30	Compensated Neutron (Limestone)		-10
6	Caliper (GAPI)	16	30	Compensated Density (Limestone)		-10
			2.625	DGA	3.425	-0.25
			Correction			0.25
			Line Tension			0
						LSPD

