



Pioneer Energy Services

# Microresistivity Log

15-063-22064-00-00

API No.

Company Palomino Petroleum, Inc.

Well Polly #1

Field Wildcat

County Gove State

Kansas

Location 1485' FNL & 511' FEL

Other Services  
CNL/CDL  
DIL

Sec: 14 Twp: 15S Rge: 26W

Permanent Datum Ground Level Elevation 2390  
Log Measured From Kelly Bushing 5 Ft. Above Perm. Datum  
Drilling Measured From Kelly Bushing

Elevation

K.B. 2395  
D.F.  
G.L. 2390

Date 11/28/2012

Run Number Two

Depth Driller 4400

Depth Logger 4400

Bottom Logged Interval 4399

Top Log Interval 3500

Casing Driller 8.625 @ 219

Casing Logger 216

Bit Size 7.875

Type Fluid in Hole Chemical

Salinity, ppm CL 3700

Density / Viscosity 9.45 48

pH / Fluid Loss 9.0 8.0

Source of Sample Flowline

Rm @ Meas. Temp 0.60 @ 64

Rmf @ Meas. Temp 0.45 @ 64

Rmc @ Meas. Temp 0.81 @ 64

Source of Rmf / Rmc Charts

Rm @ BHT 0.31 @ 122

Operating Rig Time 4 Hours

Max Rec. Temp. F 122

Equipment Number 91

Location Hays

Recorded By D. Schmidt

Witnessed By Jerry A. Smith

<<< Fold Here >>>

All interpretations are opinions based on inferences from electrical or other measurements and we cannot and do not guarantee the accuracy or correctness of any interpretation, and we shall not, except in the case of gross or willful negligence on our part, be liable or responsible for any loss, costs, damages, or expenses incurred or sustained by anyone resulting from any interpretation made by any of our officers, agents or employees. These interpretations are also subject to our general terms and conditions set out in our current Price Schedule.

### Comments

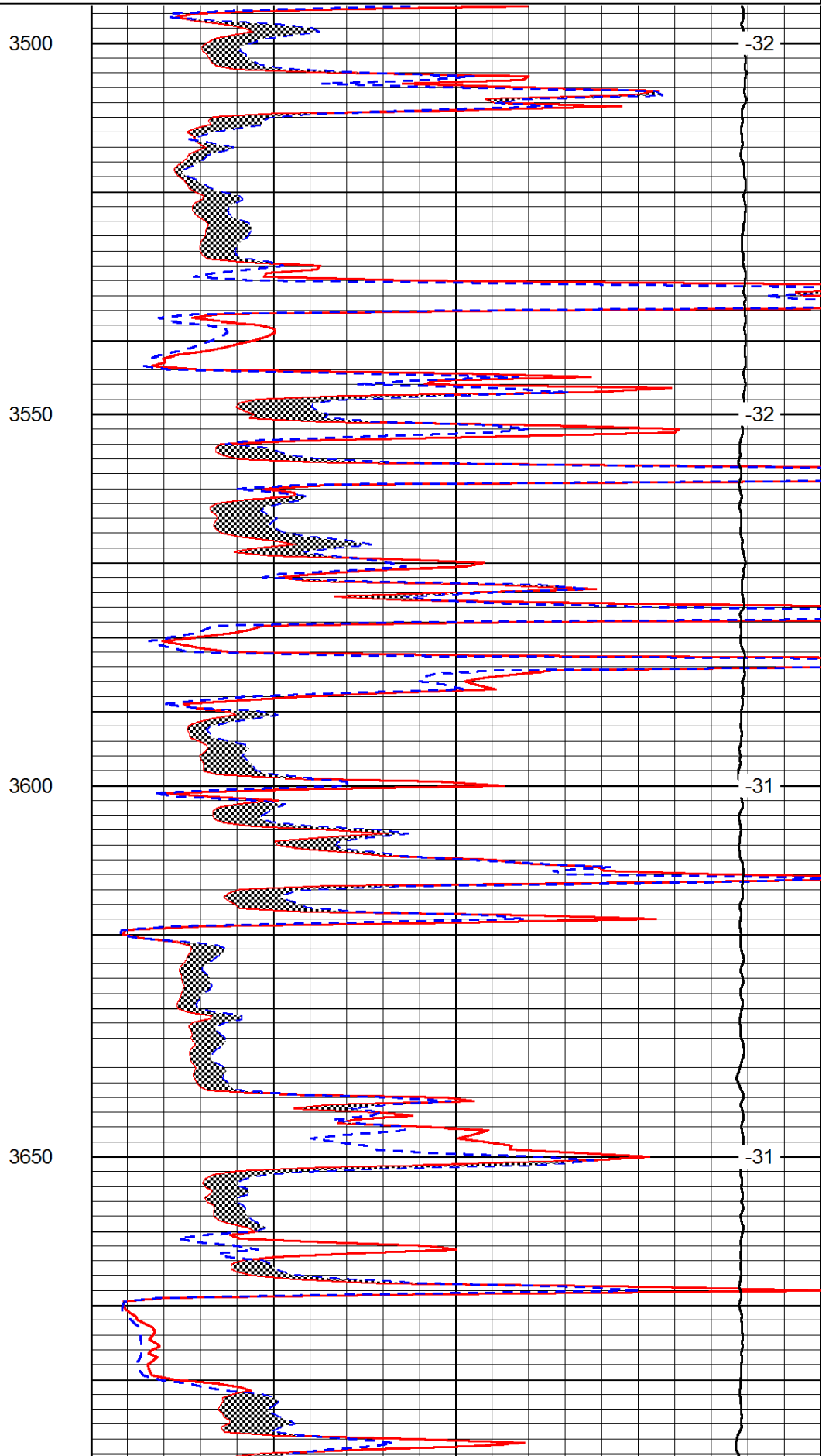
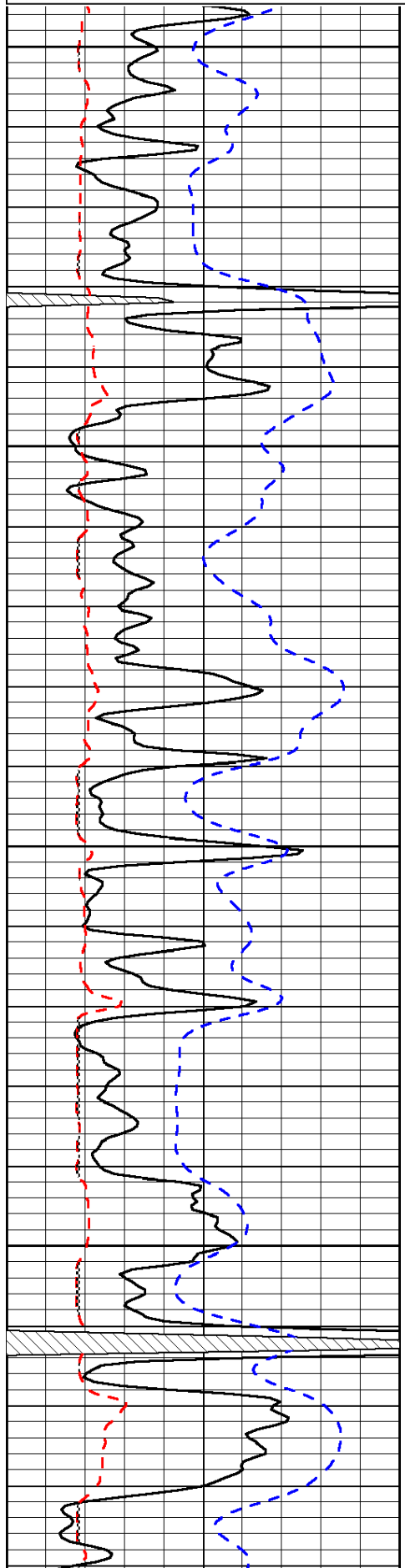
Thank you for using Pioneer Energy Services  
[www.pioneerres.com](http://www.pioneerres.com)  
 785 625 3858  
 Wakeeney,  
 9 1/2 South on Hwy 283 to R Rd, 11 West to 130th, 7 South to Y Rd,  
 1 West to 120th, 1 South to Z Rd, 1 West to 110th, 1 West,  
 1 South, East into

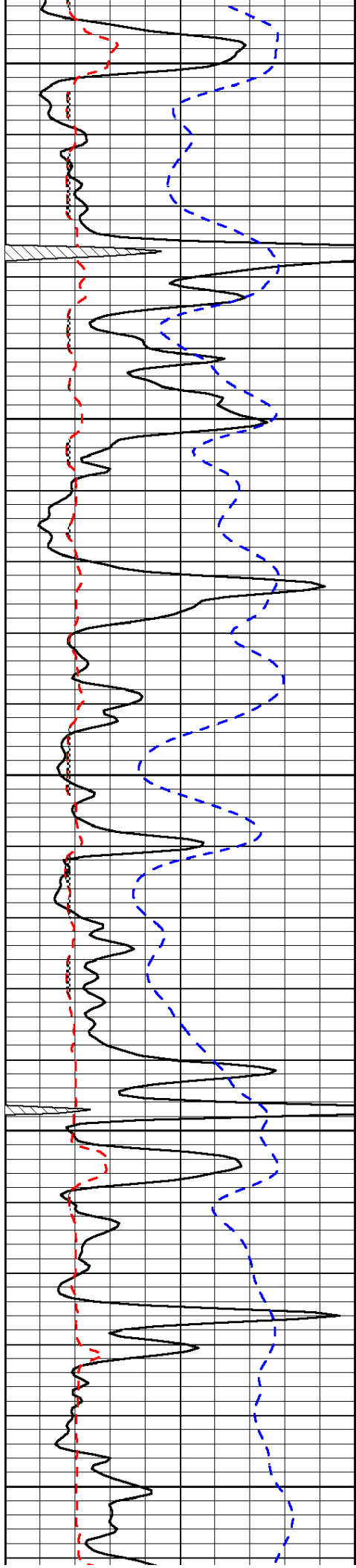
Database File: c:\warrior\data\palomino\_polly #1\palomino\_112912hd.db  
 Dataset Pathname: dil\palstack  
 Presentation Format: micro  
 Dataset Creation: Wed Nov 28 17:35:23 2012  
 Charted by: Depth in Feet scaled 1:240

0	Gamma Ray	150
6	Micro Log Caliper (GAPI)	16
-200	SP (mV)	0

0	Micro Inverse 1 X 1	40
0	Micro Normal 2"	40
15000	Line Weight	0

LSPD





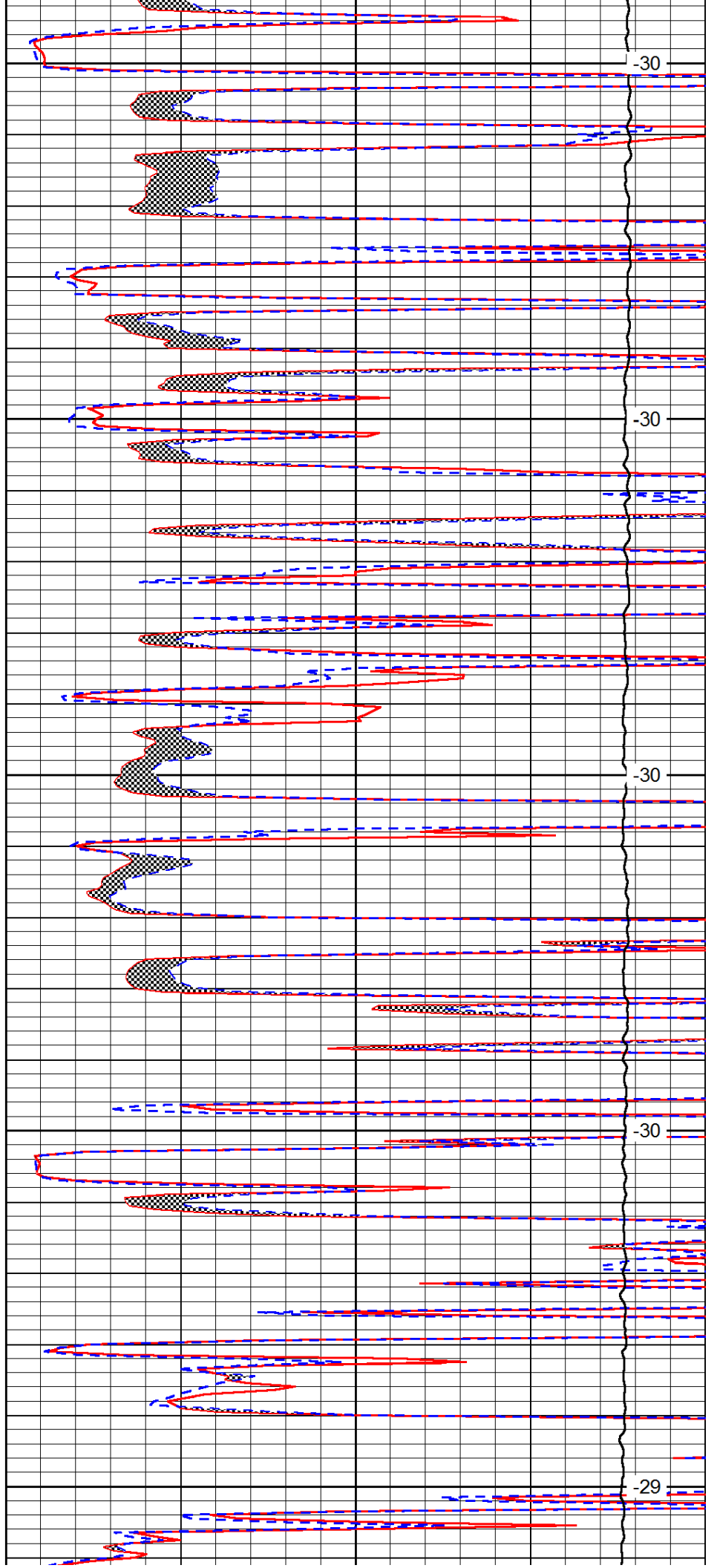
3700

3750

3800

3850

3900



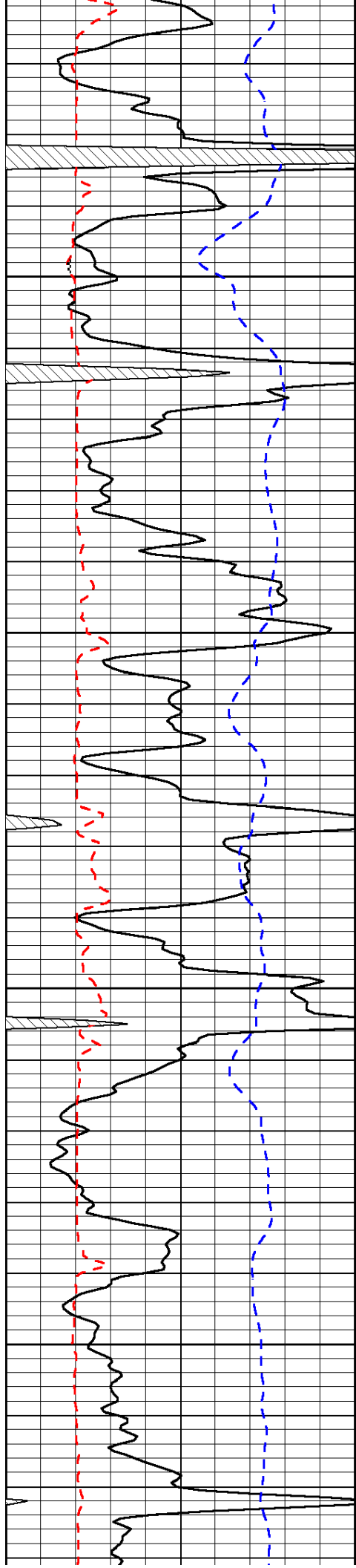
-30

-30

-30

-30

-29

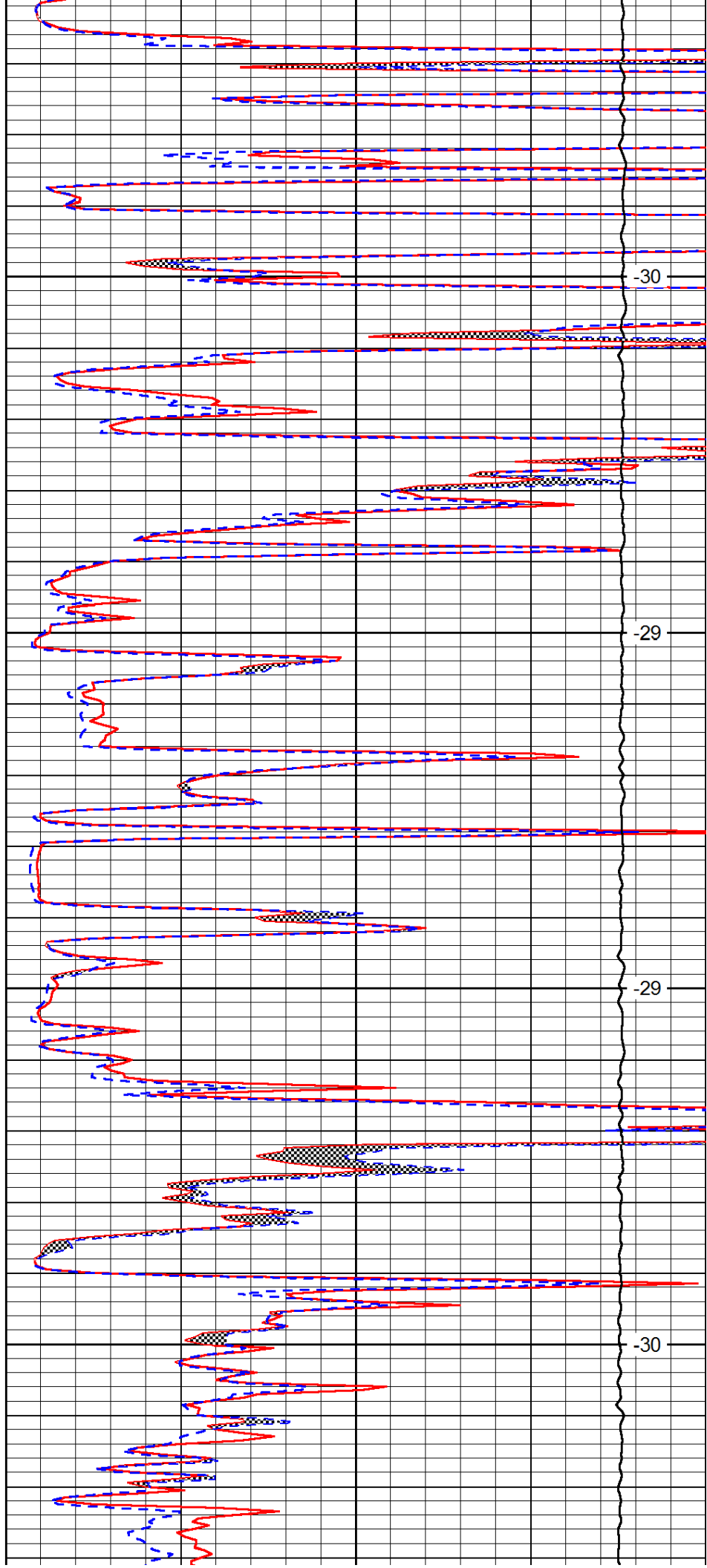


3950

4000

4050

4100

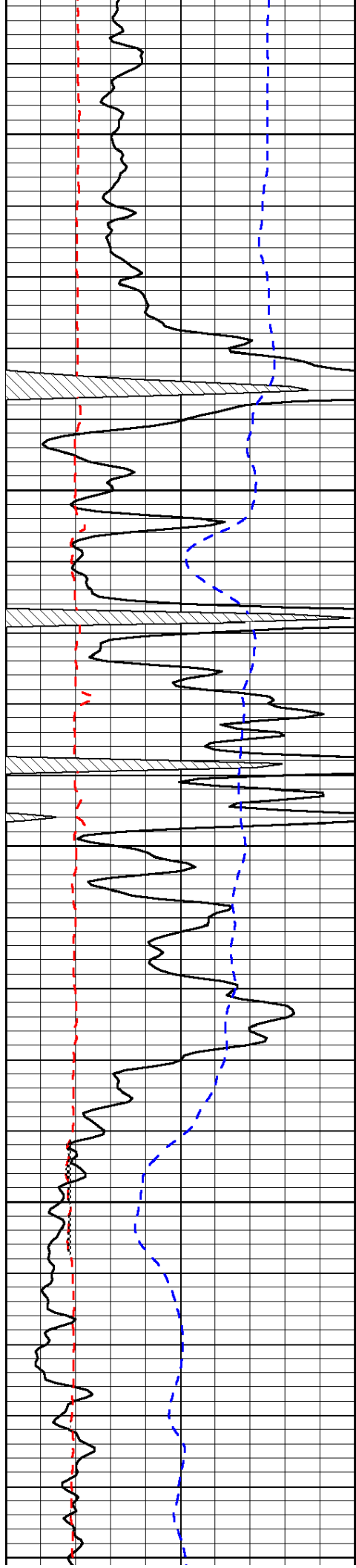


-30

-29

-29

-30



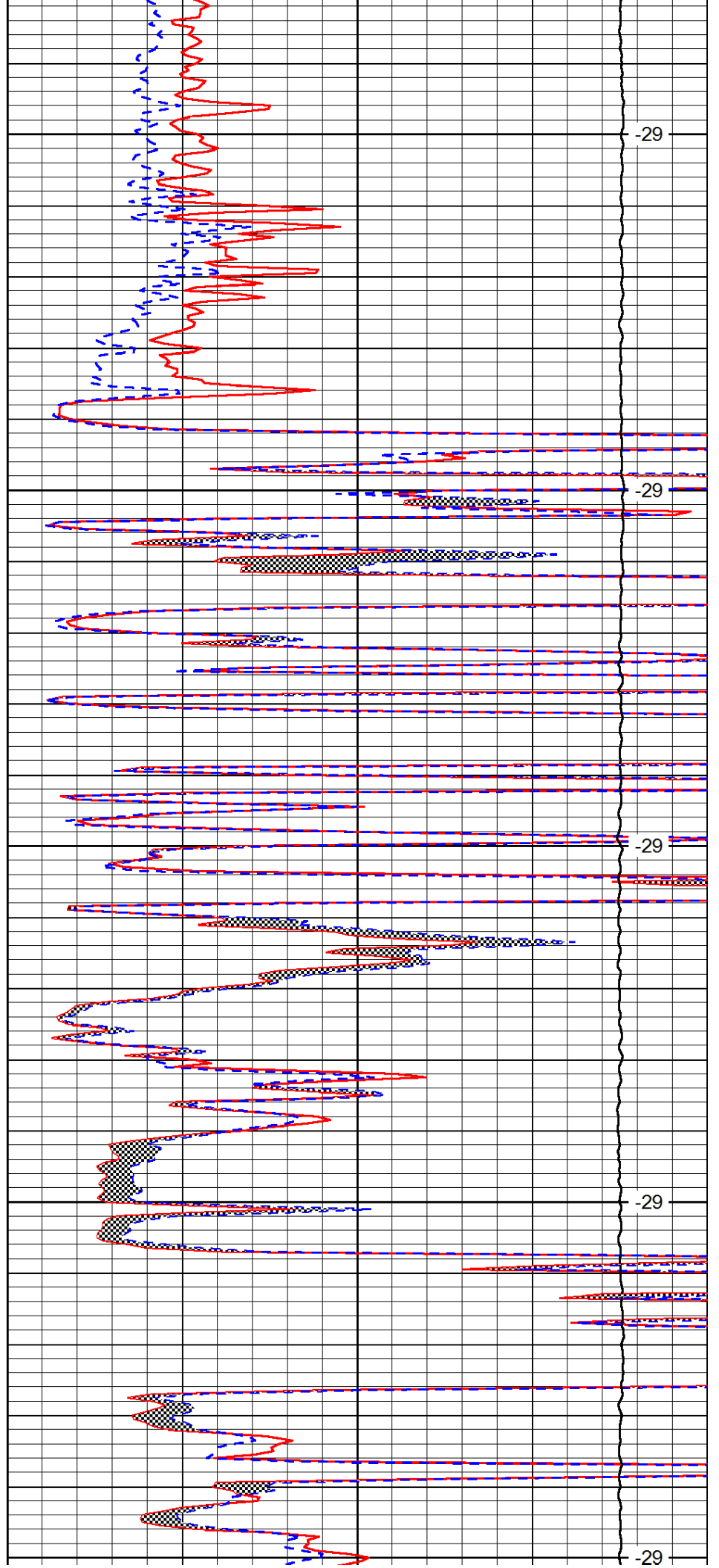
4150

4200

4250

4300

4350



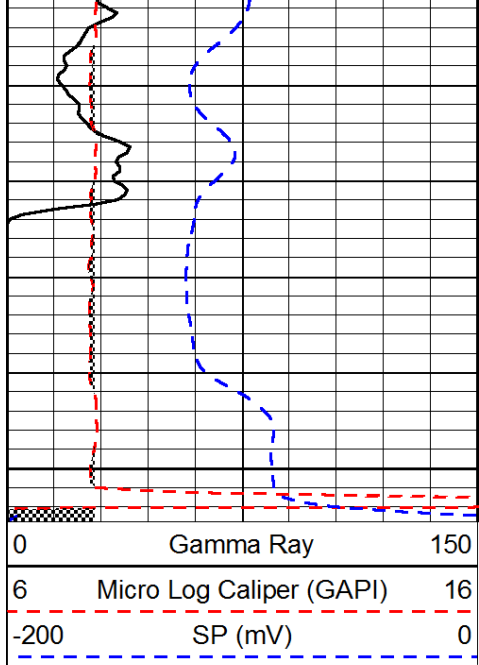
-29

-29

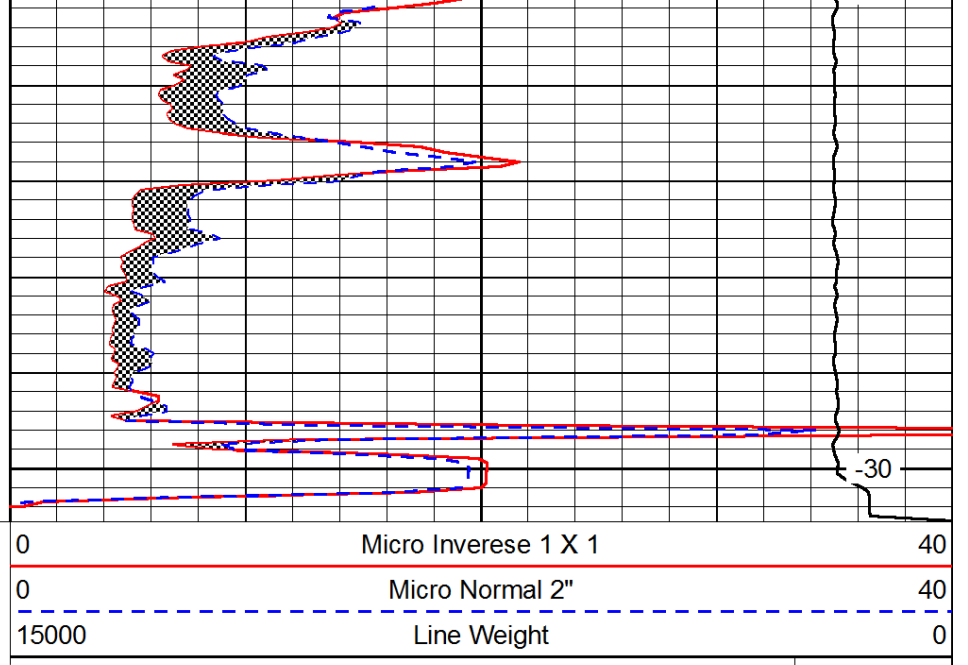
-29

-29

-29



4400



LSPD