

PLOTTED GEOLOGICAL LOG

WellSight Systems

Scale 1:240 (5"=100') Imperial

Well Name: BERAN - TRAPP #1-7

Location: SEC. 7-T12S-R13W

Licence Number: API # 15-167-23819-00-00

Spud Date: 8/30/2012

Surface Coordinates: 1859' FNL & 802' FEL
7-T12S-R13W

Region: RUSSELL CO., KS

Drilling Completed: 9/05/2012

Bottom Hole Coordinates:

Ground Elevation (ft): 1614'

K.B. Elevation (ft): 1624'

Logged Interval (ft): 1400' **To:** 3450' **Total Depth (ft):** 3450'

Formation: Arbuckle

Type of Drilling Fluid: Chemical Mud by Mud-Co

Printed by MUD.LOG from WellSight Systems 1-800-447-1534 www.WellSight.com

OPERATOR

Company: ROBERTS RESOURCES, INC.

Address: 2020 N. TYLER RD.

SUITE 106

WICHITA, KS 67212

GEOLOGIST

Name: Kent Roberts

Company: Roberts Resources, Inc.

Address: 2020 N. Tyler, Suite 106

Wichita, KS 67212

Phone 316-721-2817

INFORMATION

DRILLING CONTRACTOR: Val Drlg., Rig #6

MUD TYPE: Chemical

DRILLING TIME KEPT FROM: 1400' to RTD

SAMPLES SAVED FROM: 1400' to RTD

SAMPLES EXAMINED FROM: 2400' to RTD

GEOLOGICAL SUPERVISION FROM: 440' to RTD

ELECTRICAL SURVEYS: CNL/CDL, DIL, MEL by Pioneer

DAILY ACTIVITY @ 0700 HRS

8/30/12 MIRT. Spud @ 8:15PM

8/31/12 Depth 441' WOC

9/01/12 Depth 1409' Drilling

9/02/12 Depth 2312' Drilling

9/03/12 Depth 2888' TIH w/ DST #1

9/04/12 Depth 2950' Drilling

9/05/12 Depth 3263 Drilling. RTD @ 2:00 PM

CASING DATA

CONDUCTOR CASING: None

SURFACE CASING: 8-5/8" x 23# @ 441' w. 225 sacks

PRODUCTION : 5-1/2 x 15.5 set @ 3343' w/ 125 sacks

FORMATION TOPS

WELL NAME: Beran - Trapp #1-7

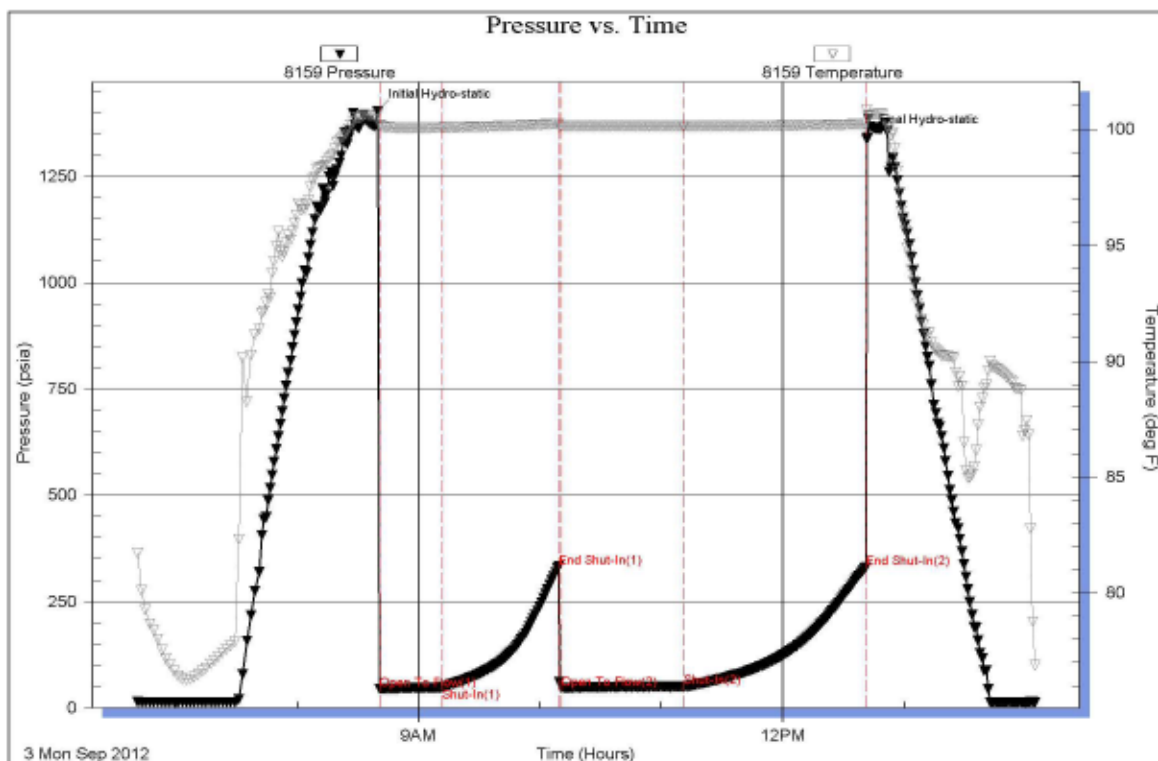
ELEV.

G.L. = 1614

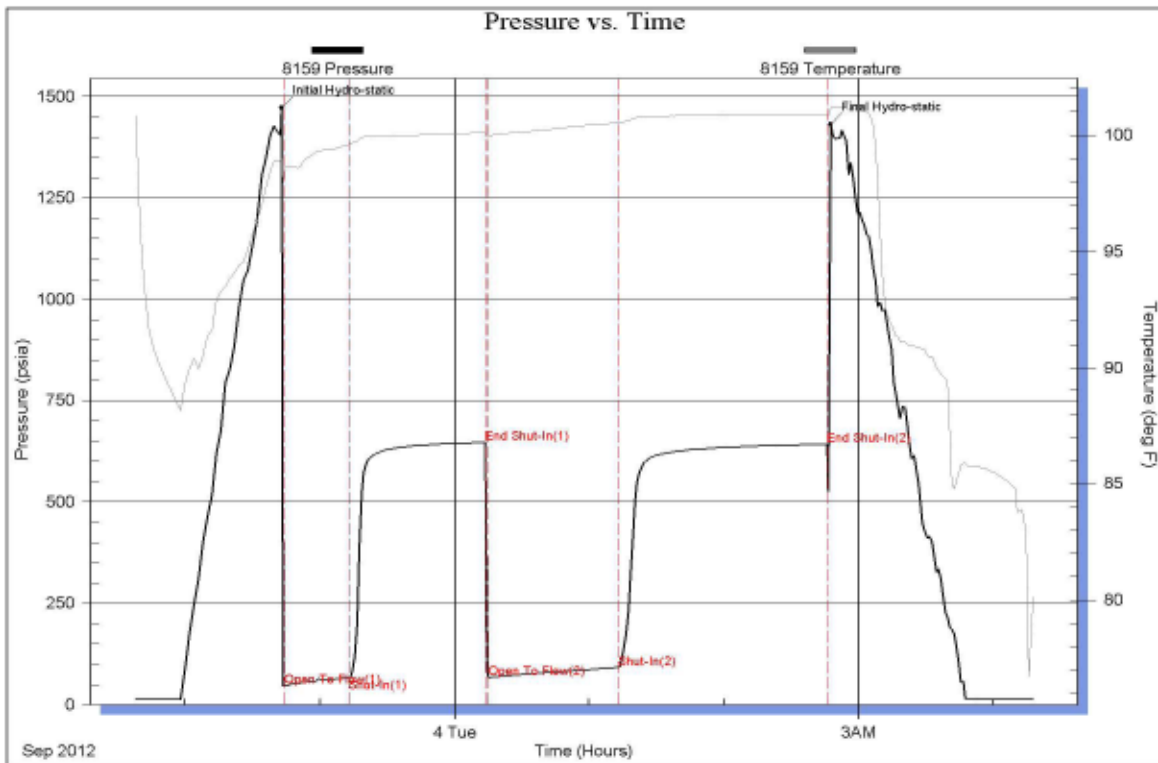
K.B. = 1624

KEY WELLS

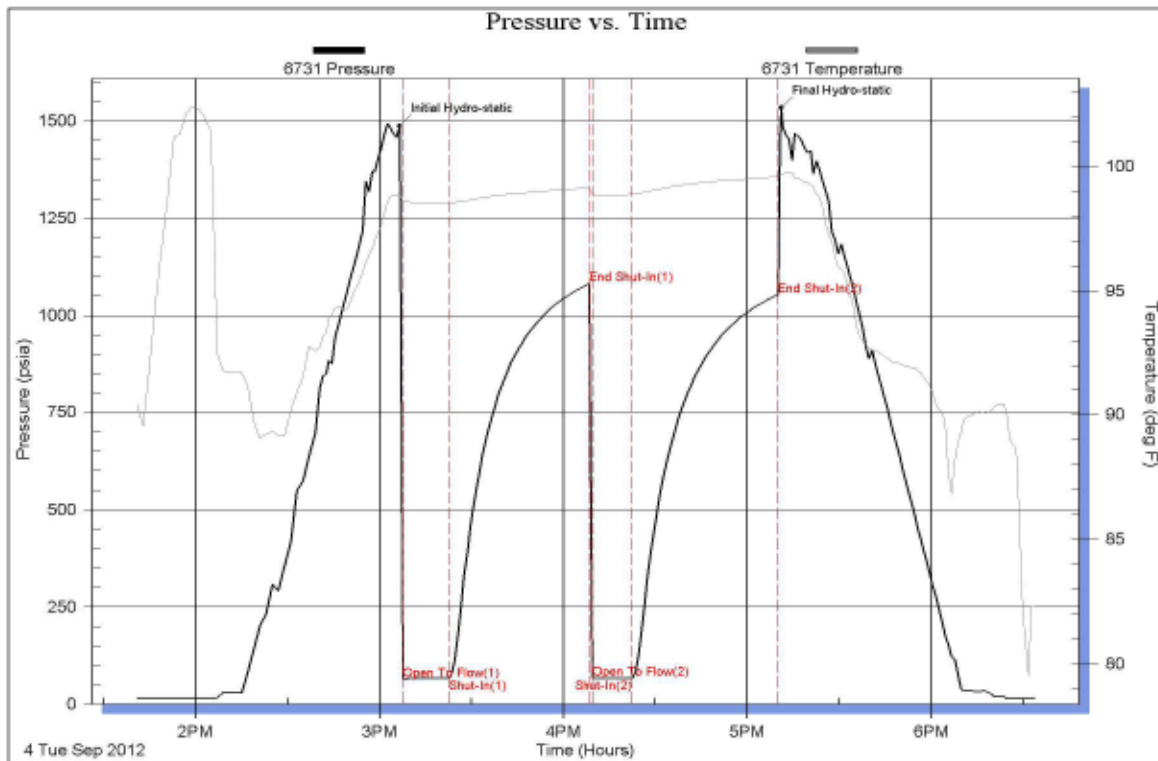
FORMATION TOPS	Sample		E- Log		Beran #1	Trapp B-1
Anhydrite	675	949	669	955	950	948
Heebner	2780	-1156	2777	-1153	-1157	-1144
Lansing	2831	-1207	2828	-1204	-1209	-1199
Lansing "C" Zone	2876	-1252	2873	-1249	-1254	-1241
Lansing "G" Zone	2939	-1315	2936	-1312	-1317	-1304
BKC	3113	-1489	3110	-1486	-1485	-1477
Simpson	3310	-1686	3304	-1680	NDE	-1673
Arbuckle	3354	-1730	3354	-1730	NDE	-1723
Total Depth	3450	-1826	3449	-1825	-1546	-1783



DST #1 2844-2888'
 30-60-60-90
 IF: Weak 1/2 inch
 ISI: No blow
 FF: Weak 2 inches
 FSI: No blow
 Rec: 15' SOCM
 HP: 1402-1341
 FP: 44-48 / 46-49
 SIP: 332-330



DST #2 2896-2944
 30-60-60-90
 IF: Weak 5 inches
 ISI: No blow
 FF: Weak 10 inches
 FSI: No blow
 Rec: 180' GIP, 5' clean oil,
 85' WCM
 HP: 1472-1431
 FP: 47-66 / 67-91
 SIP: 645-641



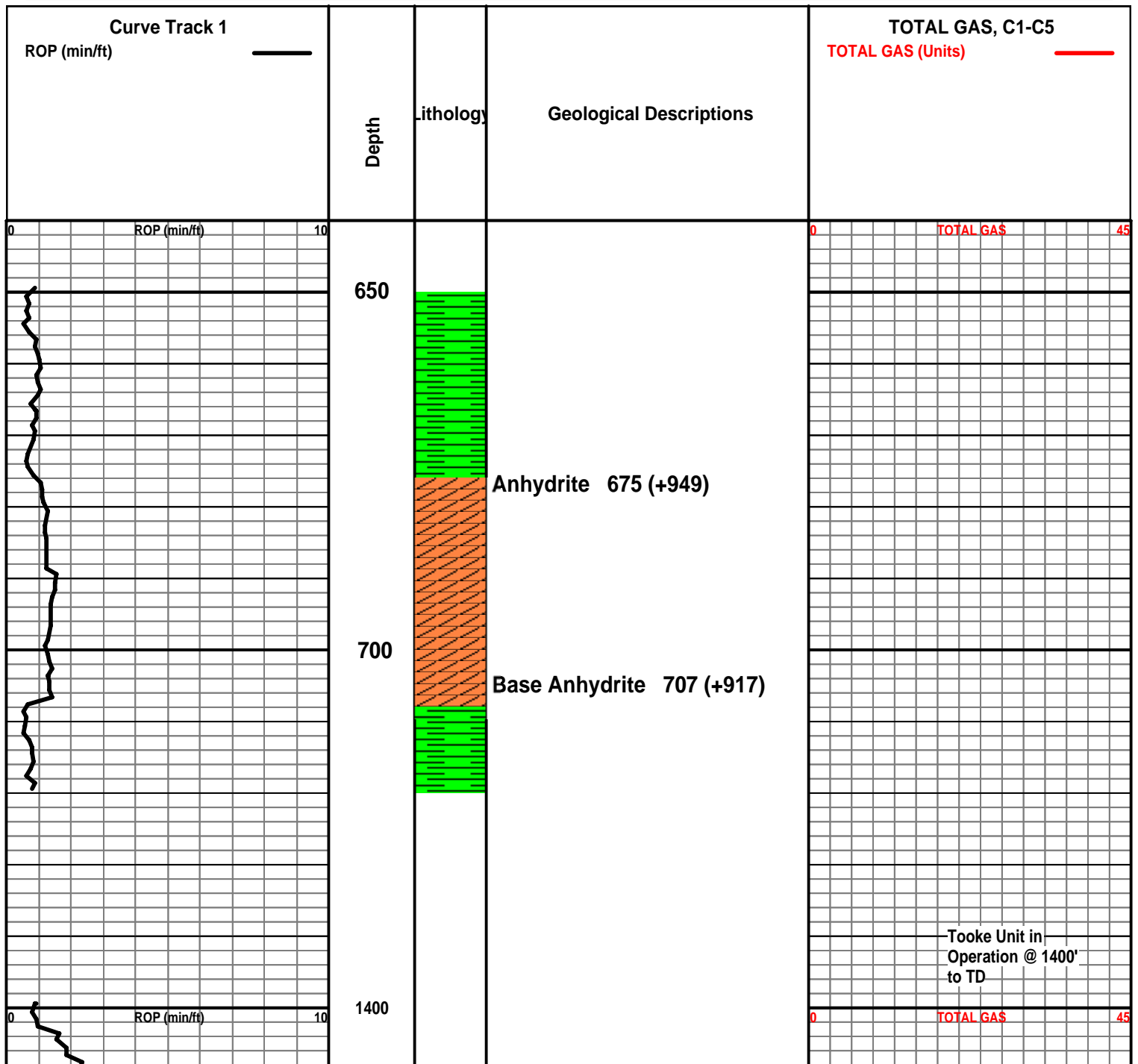
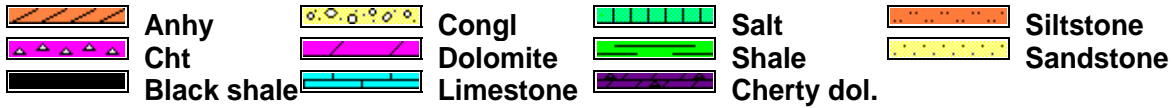
DST #3 2970-3050
 15-45-15-45
 IF: Very Weak Surface
 blow
 ISI: No blow
 FF: Very Weak died in 7
 minutes
 FSI: No blow
 Rec: 5' Mud
 HP: 1554 -1534
 FP: 64-66 / 66-66
 SIP: 1082 - 1053

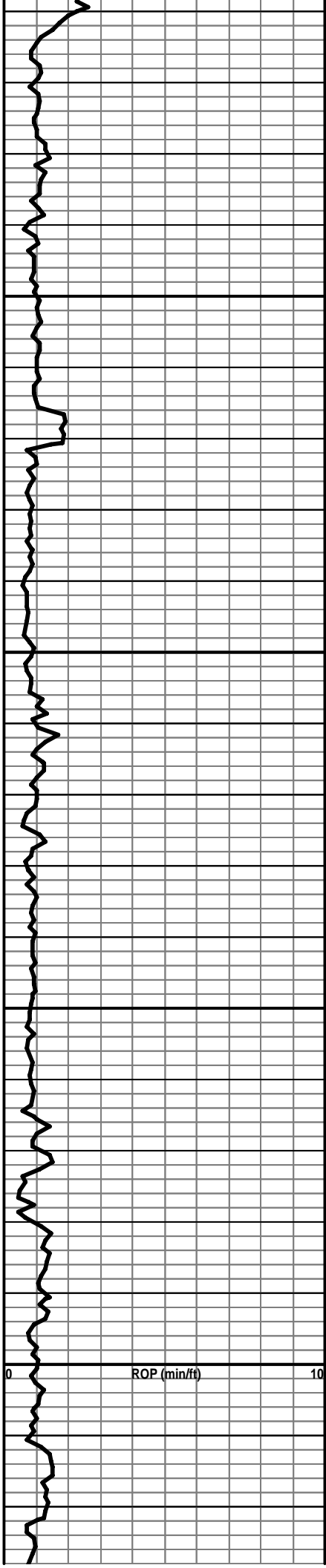
Based on sample examination, DST results and E-Log measurements production casing was ran for further testing of the LKC "C" & "G" zones.

Respectfully Submitted

Kent Roberts
Geologist

ROCK TYPES

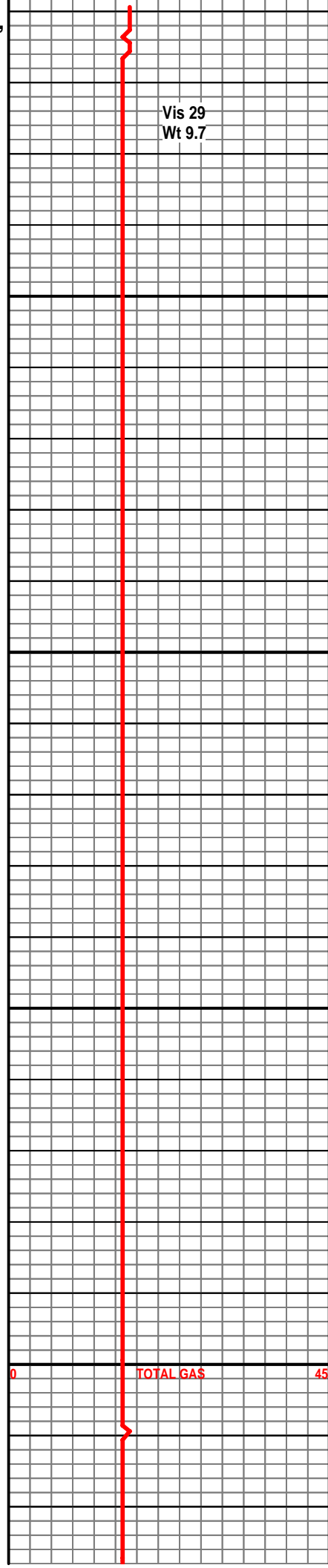


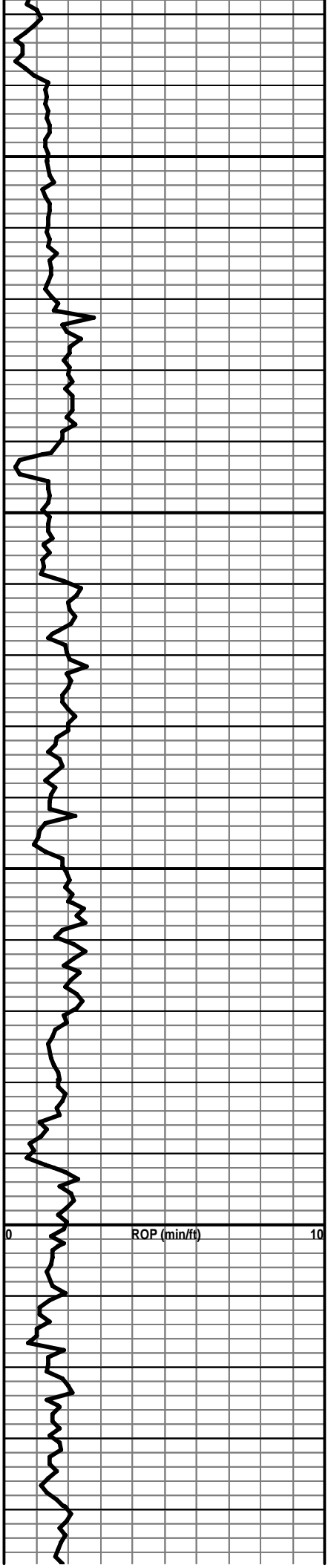


Sample quality poor. All Shale,
Red, Gry, Mrn, Scat Gyp, Clr,
Wht

KRIDER 1438 (+186)

FT. RILEY 1565 (+59)





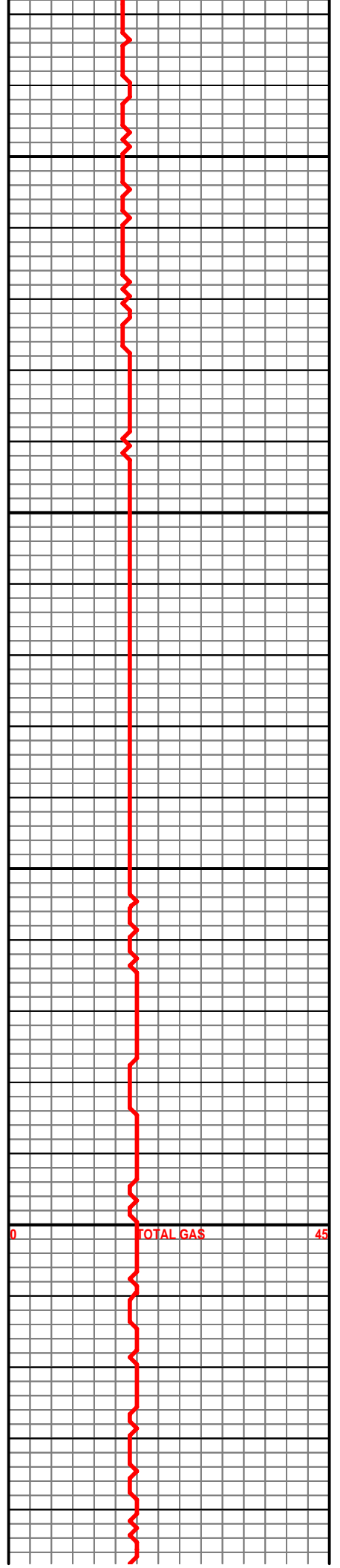
1650

1700

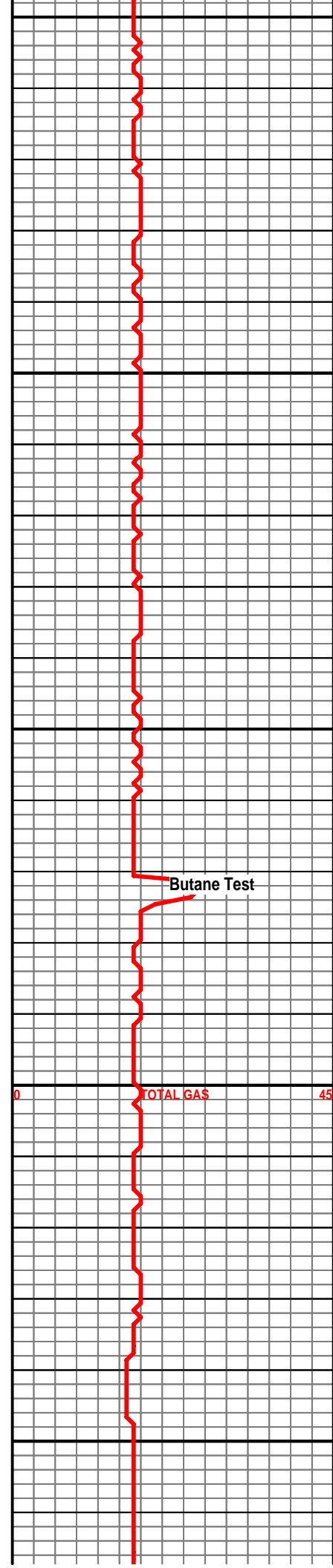
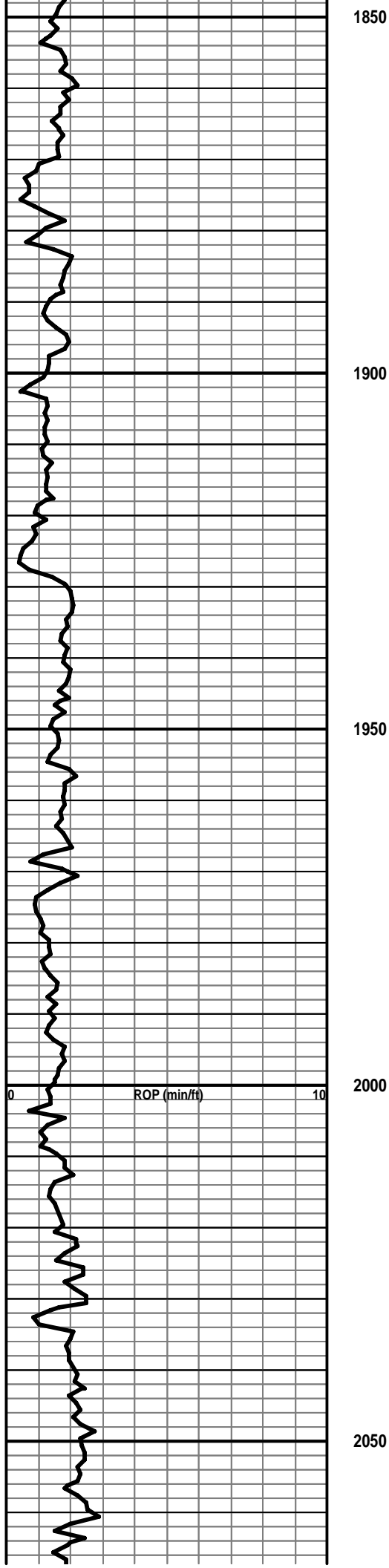
1750

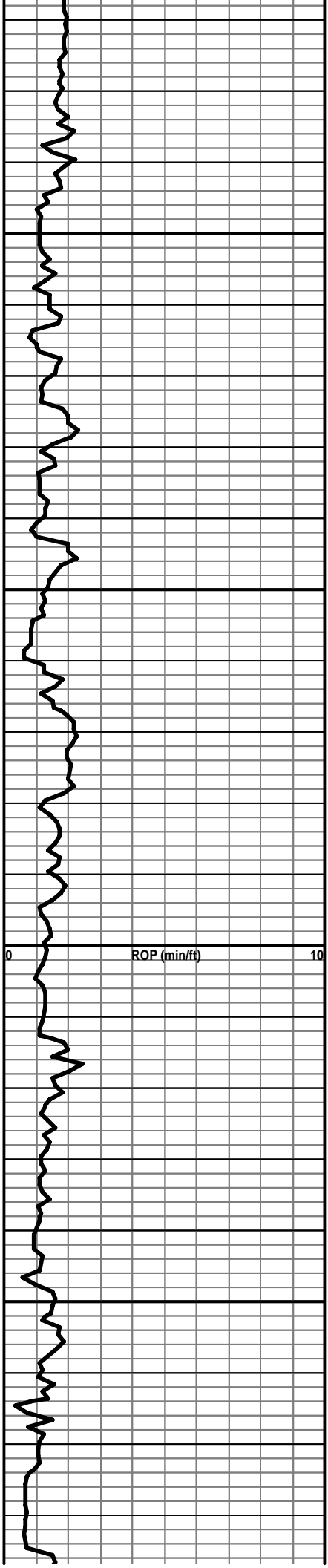
1800

ROP (min/ft)



TOTAL GAS



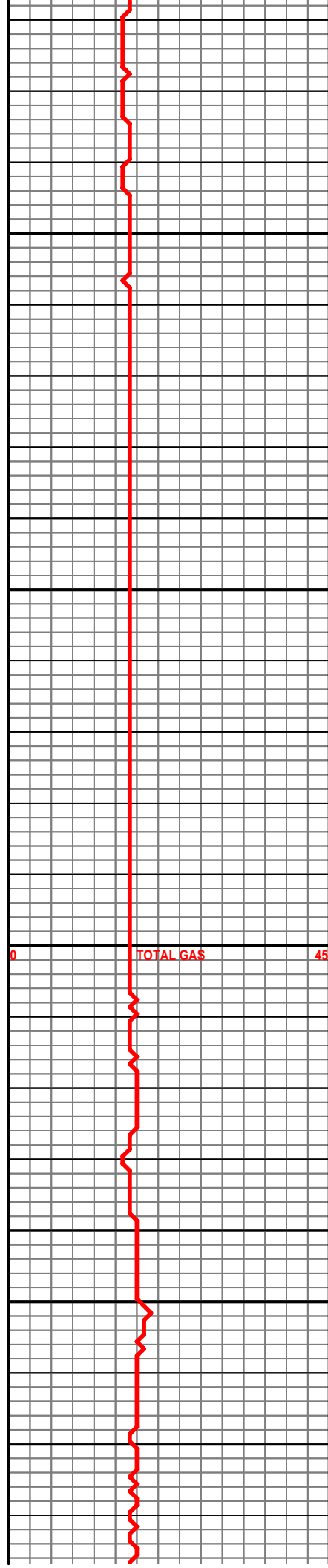


2100

2150

2200

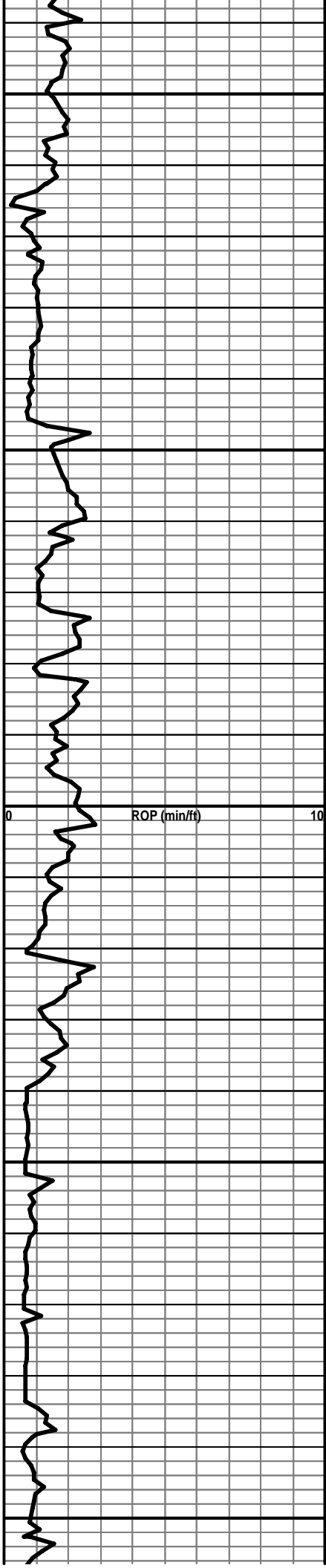
2250



0

TOTAL GAS

45



2300

2350

2400

2450

2500

ROP (min/ft)

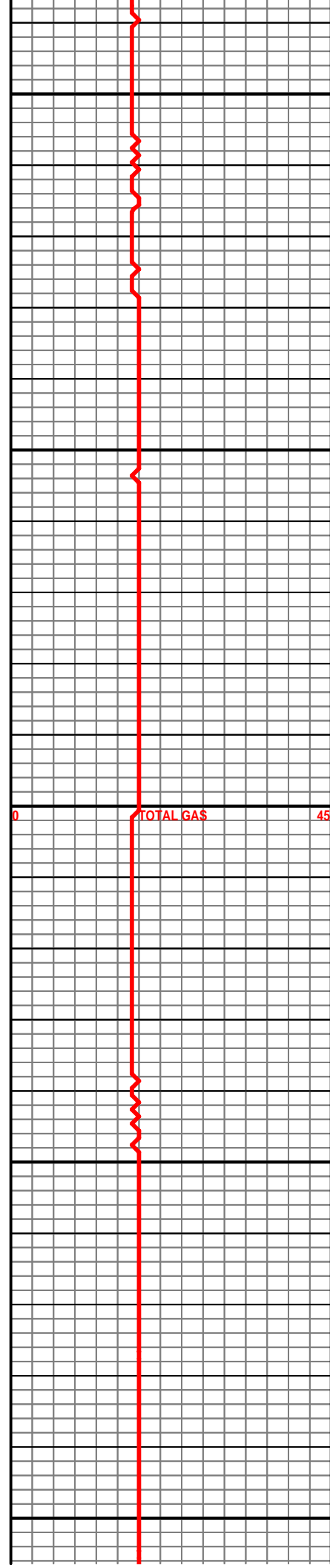
0

10

ELMONT 2346 (-722)

SAMPLES ALL SHALE, RED,
GRY, MRN, GYP, CLR-WHT

DISPLACE MUD SYSTEM



0

TOTAL GAS

45

