

Tucker
WIRELINE SERVICES

**MICRO
LOG**

Company ANDERSON ENERGY, INC
Well NORTH TRUST #1
Field BRENNER SOUTH
County TREGO
State KANSAS
Country USA
API No. 15-195-22815-0000

File No : TUL-588693
Company : ANDERSON ENERGY, INC
Well : NORTH TRUST #1
Field : BRENNER SOUTH
County : TREGO
State : KANSAS
Country : USA
API No : 15-195-22815-0000

Location :
385' FNL & 330' FWL
S/2 NW NW NW

LSD : Sect : 24 Twp : 15S Rge : 21W

Permanent Datum:	GL	Elevations:	Ft	Services:	CNT	CST
Drilling Measured From:	KB	KB 2170.00	Ft		LDT	PIT
Log Measured From:	KB	DF 2169.00	Ft		MLT	DIPLOG
Above Permanent Datum:	9.00 Ft	GL 2161.00	Ft			
Date	2012-09-17					
Run Number	1					
Depth--Driller	4270.0 Ft					
Depth--Logger	4265.0 Ft					
First Reading	4229.0 Ft					
Last Reading	294.0 Ft					
Casing--Driller	294.0 Ft					
Casing--Logger	294.0 Ft					
Bit Size	7.875 In					
Casing Size	8.625 In					
Hole Fluid Type	CHEM-GEL					
Density	9.2 LBS/GAL					
Fluid Loss	8.0 CC					
PH/Viscosity	9.5 52.0 SEC					
Sample Source	MEASURED					
RM@Measured Temp.	2.000 @ 75 F					
RMF@Measured Temp	1.600 @ 75 F					
RMC@Measured Temp.	2.400 @ 75 F					
Source RMF/RMC	CALCULATED/CALCULATED					
RM@BHT	1.300 @ 119 F					
Time Circulation Stopped	2012-09-17 01:40					
Max Recorded Temp.	119 F					
Equipment/Base	TRK 127 TULSA					
Recorded By	SHELDON TYLER					
Witnessed By	R. FISHER					

The customer is hereby warned that by providing the log data herein, Tucker Technologies, Inc. does not agree to provide any interpretation of log data, conversion of log data to physical rock parameters or recommendations. Tucker Technologies, Inc. does not guarantee or warrant either expressly or impliedly, the accuracy of any interpretation of log data, conversion of log data to physical rock parameters or recommendations which may be given by Tucker Technologies, Inc. personnel. Any interpretation, conversion or recommendation is not part of the consideration for the agreement between the parties and is not part of any part of the charge by Tucker Technologies, Inc. for its services. Any user of the log data is warned that said user is not entitled to rely on interpretations, conversions or recommendations as aforesaid.

Bitsize Intervals		Casing Strings		
Size (In)	Bottom (Ft)	Size (In)	Weight (Lbs)	Bottom (Ft)
7.875	4270.00	8.625	32.00	294.00

Run Number	1	
Date	2012-09-17	
Date/Time On Bottom	2012-09-17 03:40	
Depth to Fluid	0.0	Ft
Salinity	0.000	PPM
RMF@BHT	1.040	@ 119 F
RMC@BHT	1.560	@ 119 F

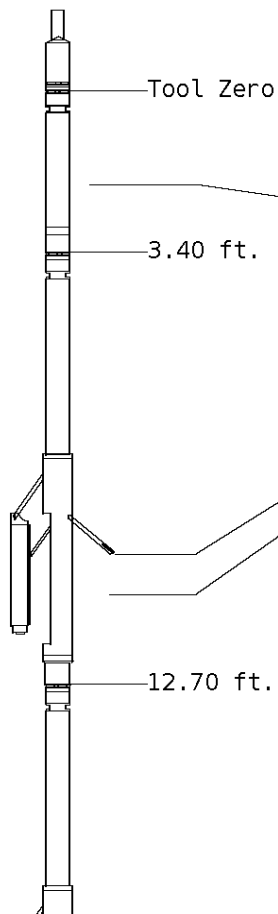
ALL PRESENTATIONS AS PER CUSTOMER REQUEST
 GRT, CNT, LDT, MLT, CST AND PIT RUN IN COMBINATION.
 CALIPERS ORIENTED ON X-Y AXIS.
 2.71 G/CC USED TO CALCULATED POROSITY.
 ANNULAR HOLE VOLUME CALCULATED UISING 5.500" PRODUCTION CASING.

GRT: GRP.
 CNT: PHIN, CLCNIN
 LDT: PORL, LCORN, PECLN, LDENN, PORLLS, CLLDIN.
 MLT: NOR_R, INV_R, MSCLPIN.
 CST: PORS, DDCDTF, TT1PF, TT3PF, ITT.
 PIT: ILD, ILM, SPU, SFLAEC

OPERATORS:
 J.T
 A.DJAHO
 B.SMITH

Tool String Schematic

Total Tool Length - 66.95 ft.
Maximum Outside diameter - 6.00 in.
Net Weight in Air - 1171.00 lbs.



Tool: GRT-B **Length:** 3.40 ft. **O.D.** 3.60 in.
 Gamma Ray Controller

Sonde ID :GRT-BC-43

Measure Point	Tool Offset	Stack Offset	Bottom Offset
GRP	2.00	2.00	64.95

Tool: CNT-AA **Length:** 9.30 ft. **O.D.** 4.36 in.
 Compensated Neutron A Pad on NDT-A

Sonde ID :NDT-BB-134

Source ID :N-1044

Pad ID :CNP-AE-42

Measure Point	Tool Offset	Stack Offset	Bottom Offset
CLCN	6.00	9.40	57.55
PHIN	6.80	10.20	56.75

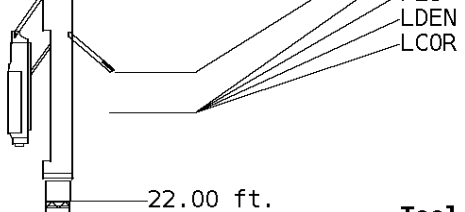
Tool: LDT-DA **Length:** 9.30 ft. **O.D.** 4.80 in.
 Litho Density D Pad on NDT-A

Sonde ID :PDT-GA-466

Source ID :CSV-587

Pad ID :LDP-DA-02

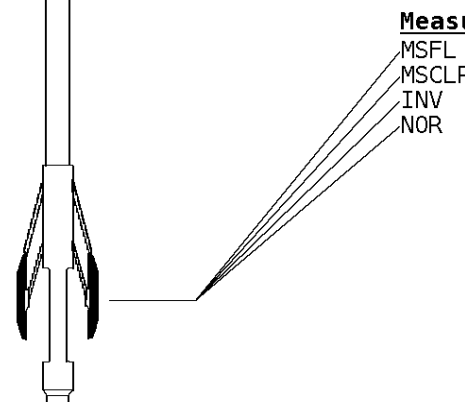
Measure Point	Tool Offset	Stack Offset	Bottom Offset
CLLD	6.00	18.70	48.25
PEL	7.00	19.70	47.25
PES	7.40	20.10	46.85



7.20 19.90 47.05
 7.20 19.90 47.05

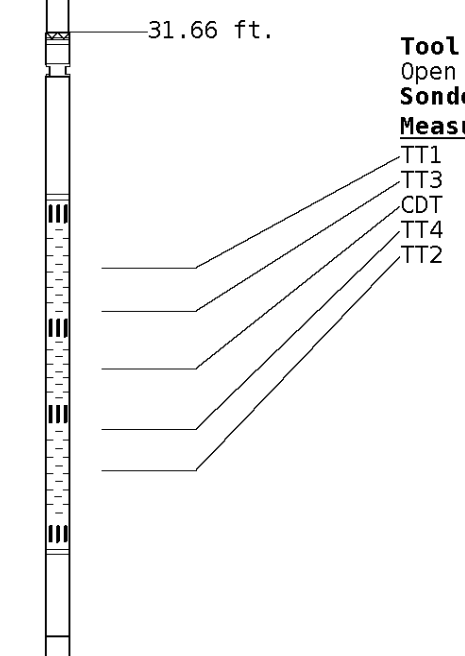
Tool: MST-DA **Length:** 9.66 ft. **O.D.** 6.00 in.
 Micro Spherically Focused (IC)
Sonde ID :MLT-DA-21

Measure Point	Tool Offset	Stack Offset	Bottom Offset
MSFL	7.60	29.60	37.35
MSCLP	7.60	29.60	37.35
INV	7.60	29.60	37.35
NOR	7.60	29.60	37.35



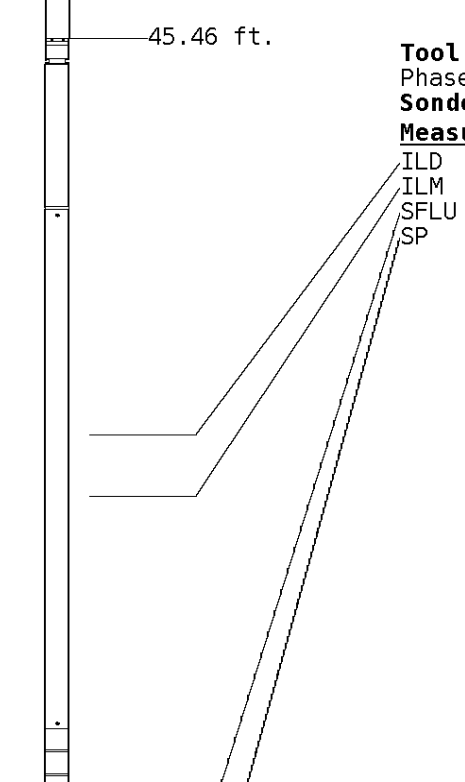
Tool: CST-AD **Length:** 13.80 ft. **O.D.** 3.60 in.
 Open Hole Sonic
Sonde ID :CST-AB-38

Measure Point	Tool Offset	Stack Offset	Bottom Offset
TT1	4.80	36.46	30.49
TT3	5.80	37.46	29.49
CDT	7.30	38.96	27.99
TT4	8.80	40.46	26.49
TT2	9.80	41.46	25.49



Tool: PIT-CA **Length:** 21.49 ft. **O.D.** 3.62 in.
 Phased Dual Induction w/ RM & D
Sonde ID :PIT-AC-13

Measure Point	Tool Offset	Stack Offset	Bottom Offset
ILD	8.92	54.38	12.56
ILM	10.10	55.56	11.39
SFLU	17.49	62.95	4.00
SP	20.60	66.06	0.88



LWT 66.95 ft.

Well File: ANDERSON NORTHTRUST 1 SEP17 QUINT DIPMETER

Scale: 1:240

Segment: V1.D1.S5 Reprocess of MAIN

Acquired: 2012-09/17 04:53 3.2.0-11172

Reference: 0

Processed: 2012-09/17 06:15 3.2.0-11172

TENSION
LBS

10000 0

BIT SIZE
INCHES (IN)

6 16

GAMMA RAY
API UNITS

150 300
0 150

CALIPER MICRO
INCHES (IN)

16 26
6 16

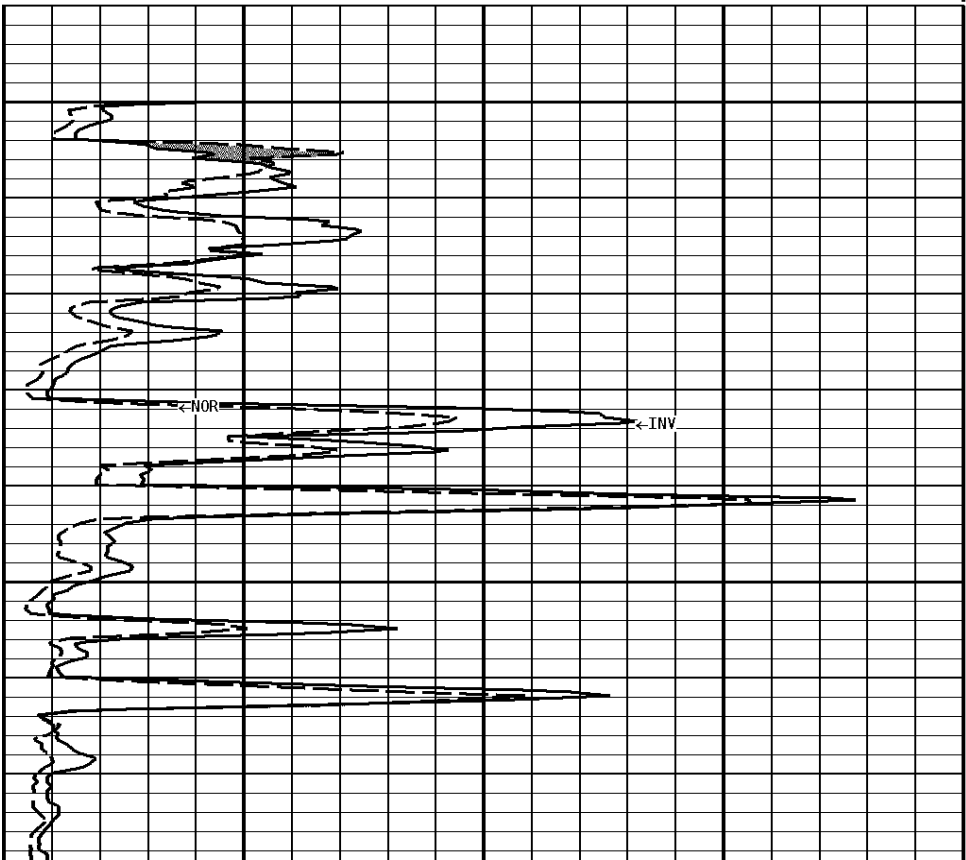
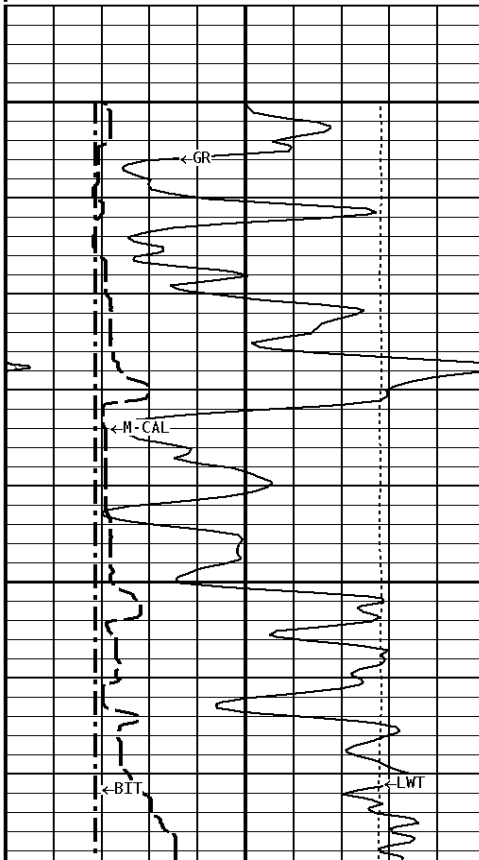
MICRO-INVERSE
OHMM

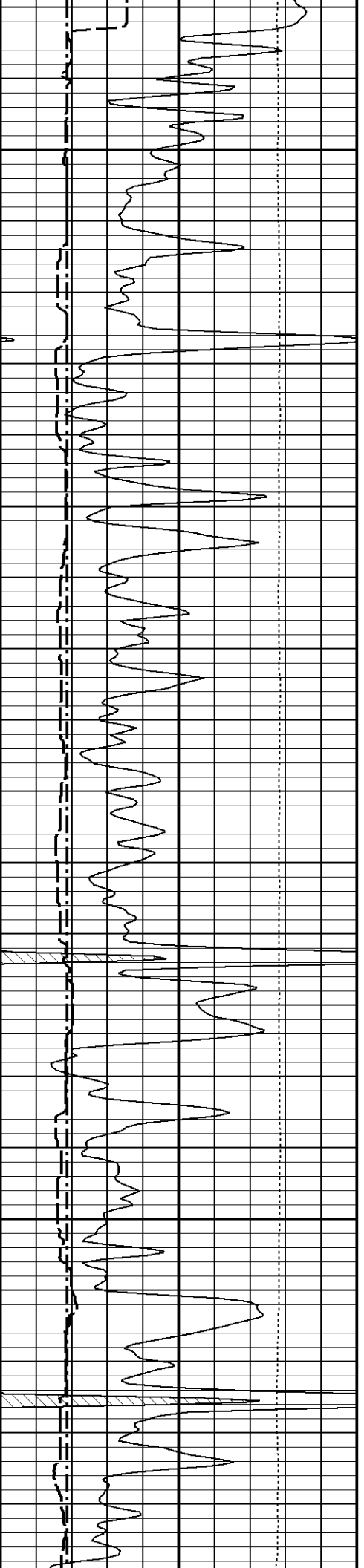
0 40

MICRO-NORMAL
OHMM

0 40

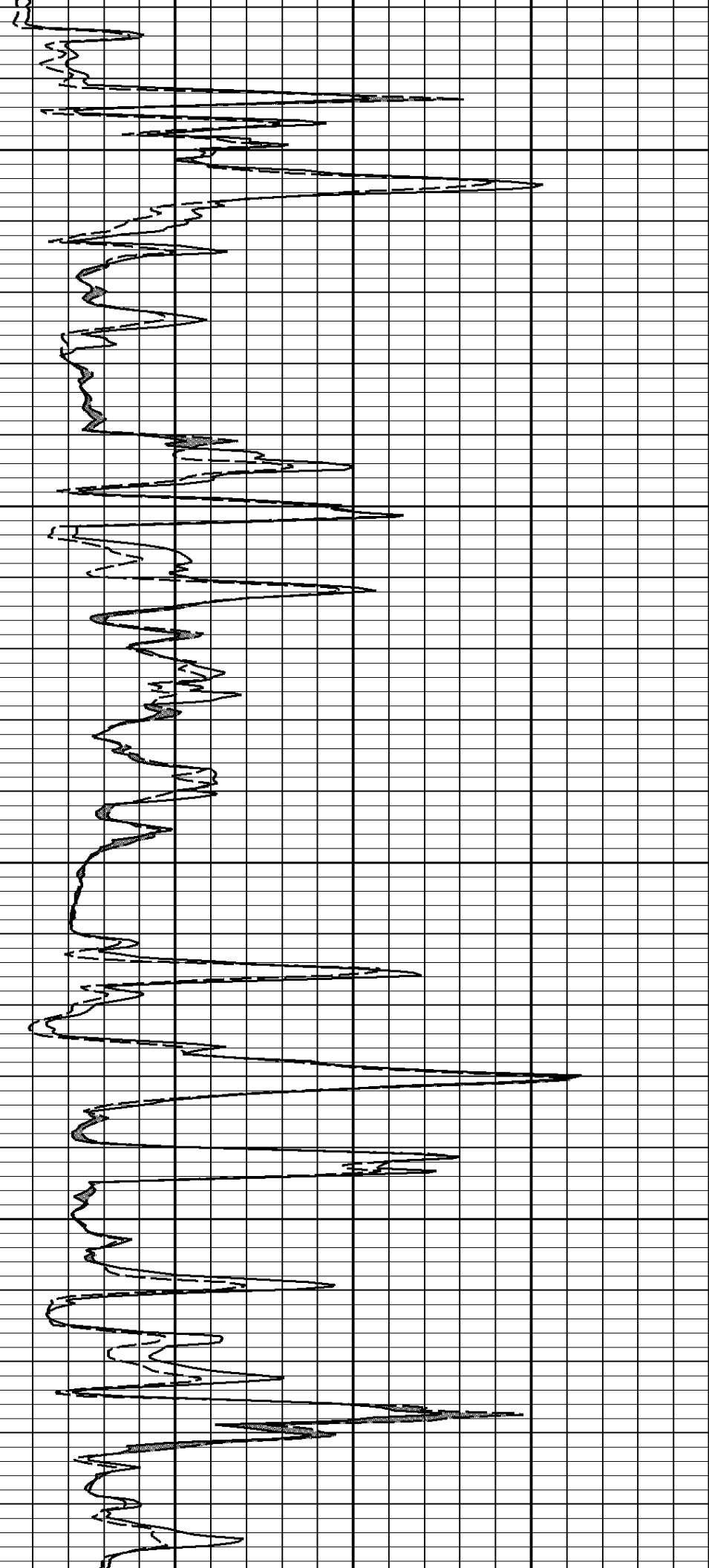
1:240 MAIN SECTION

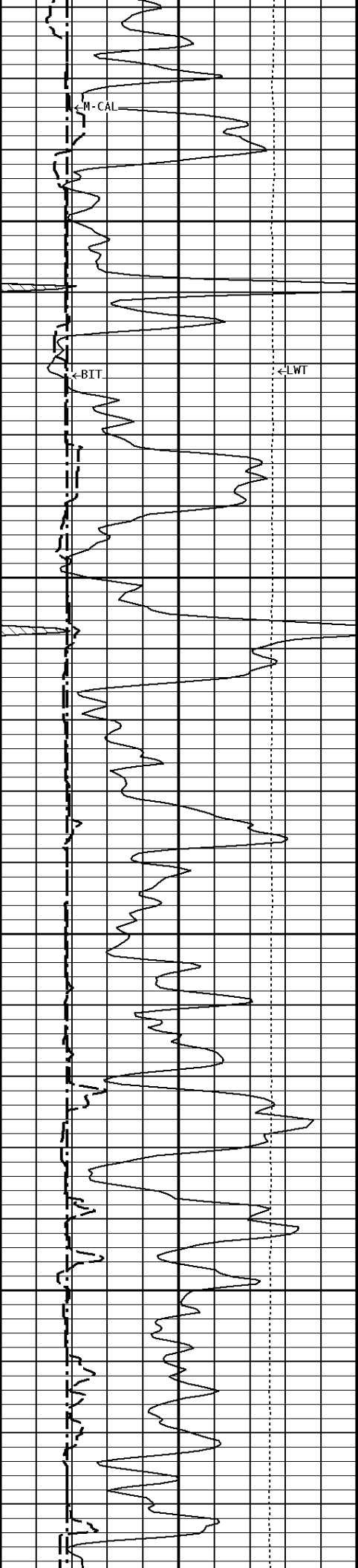




3300

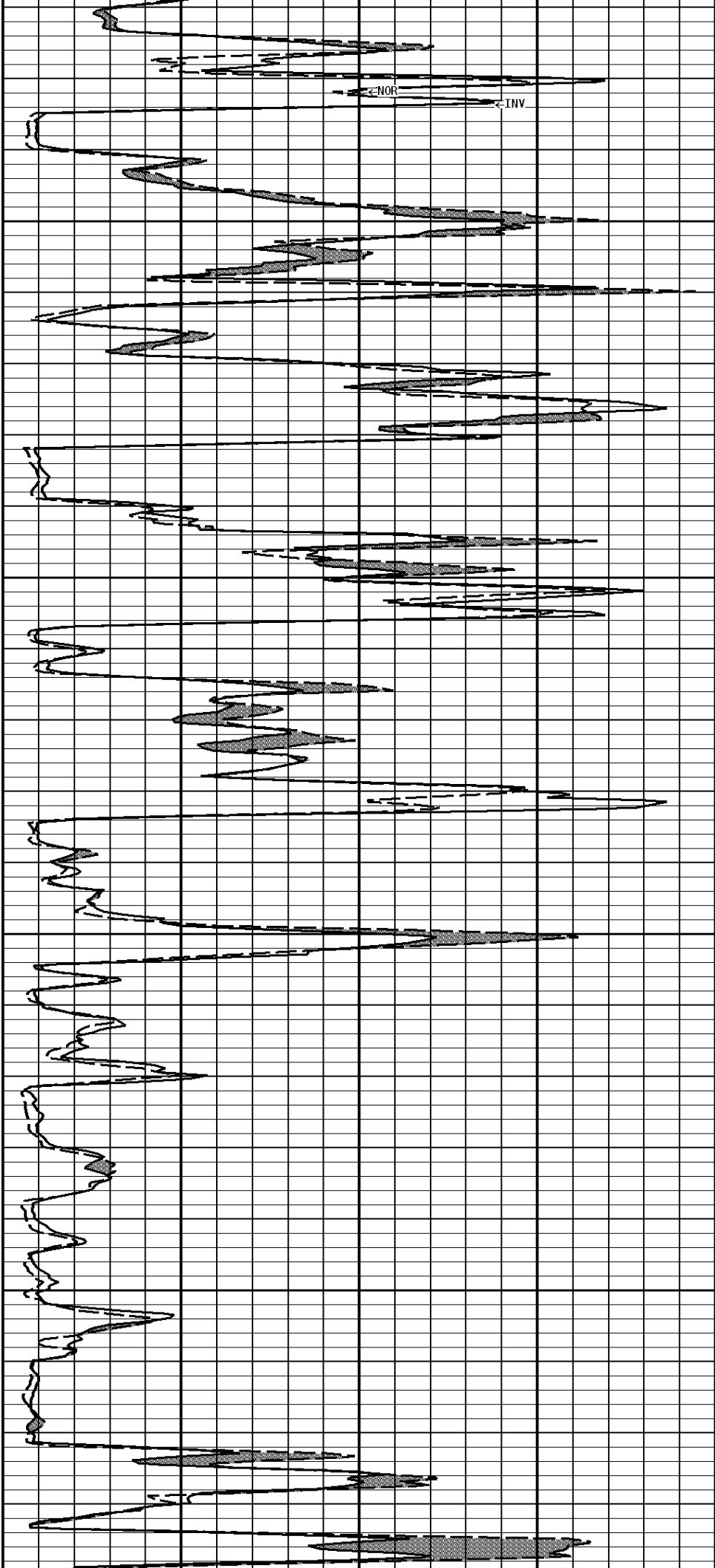
3400

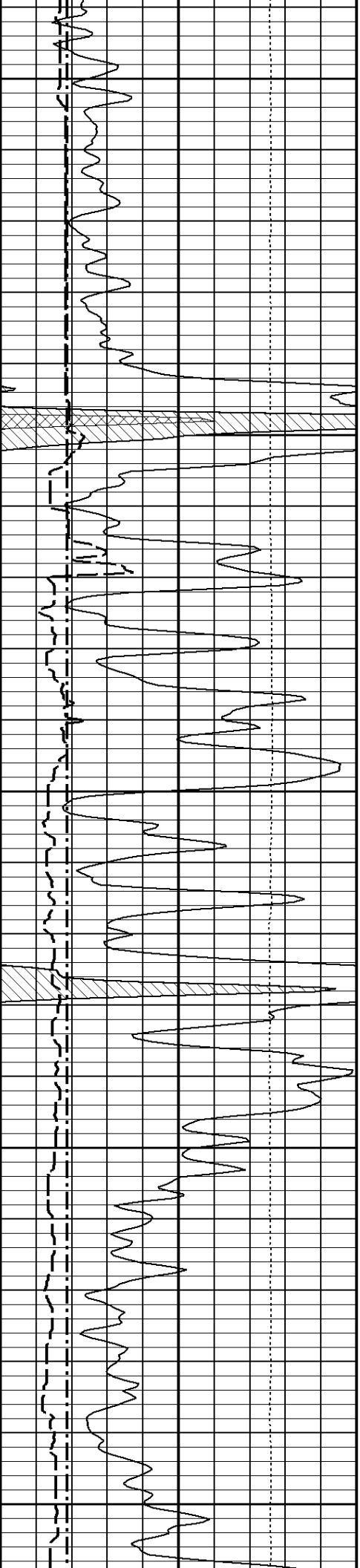




3800

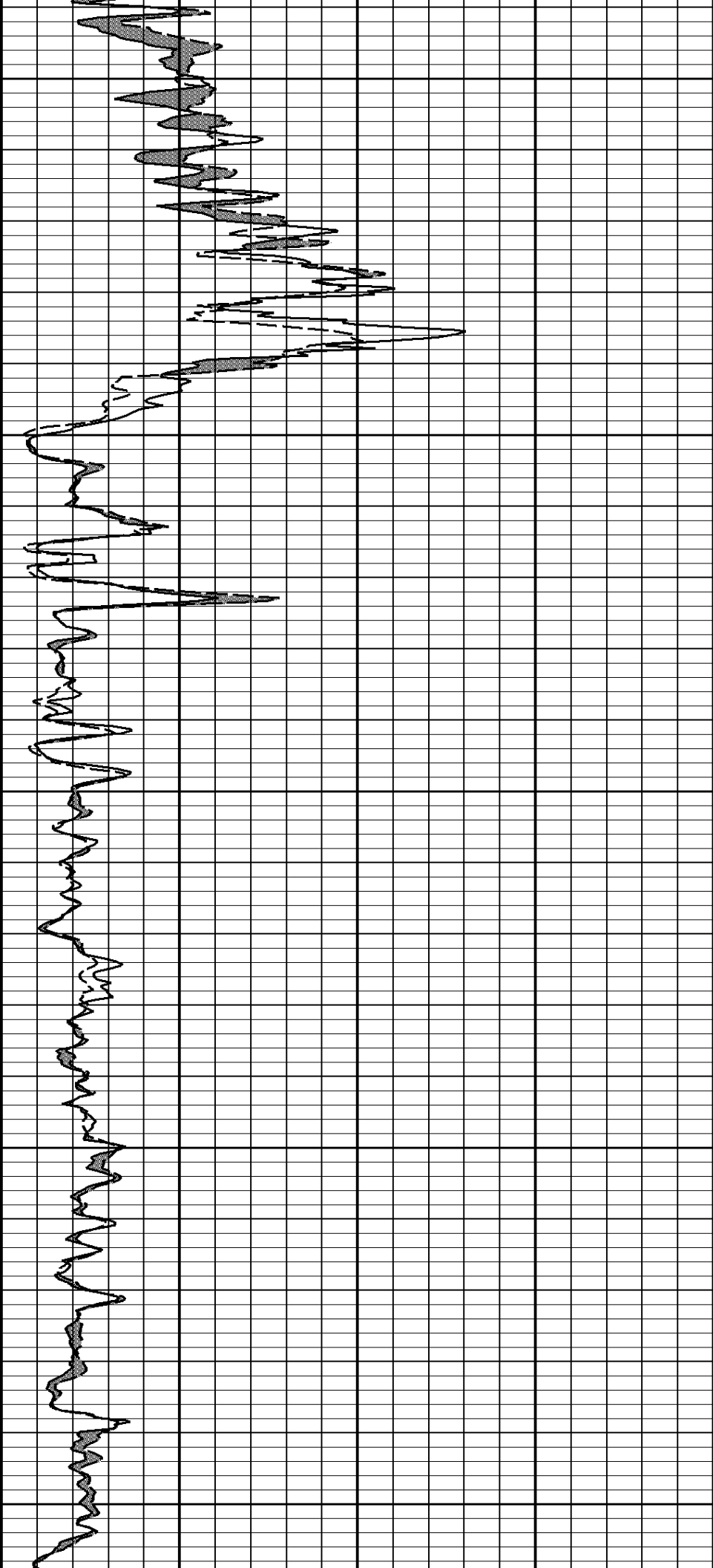
3900

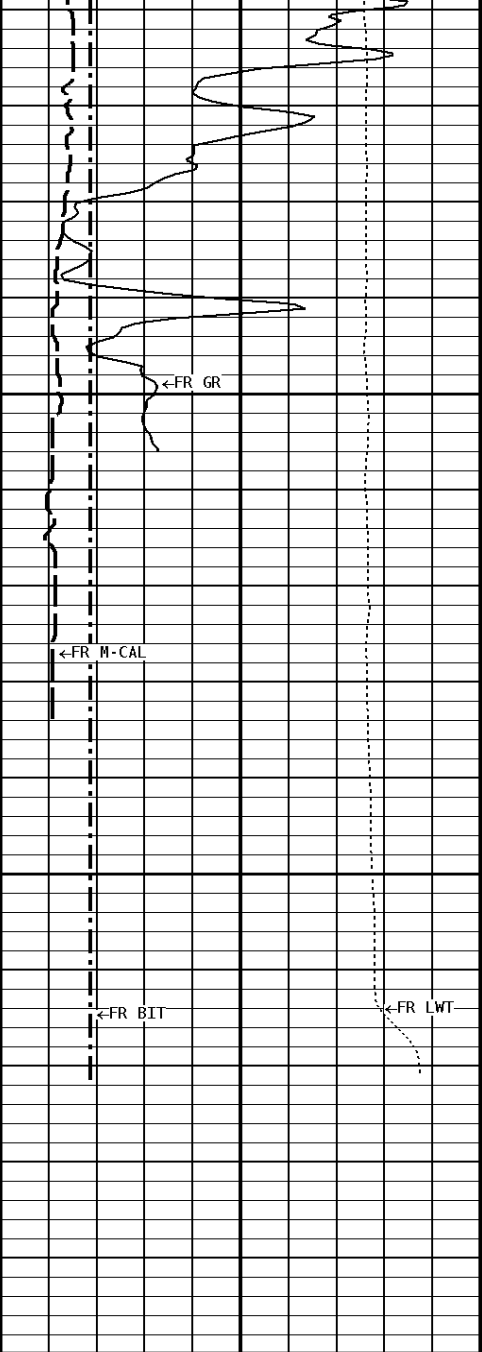




4000

4100

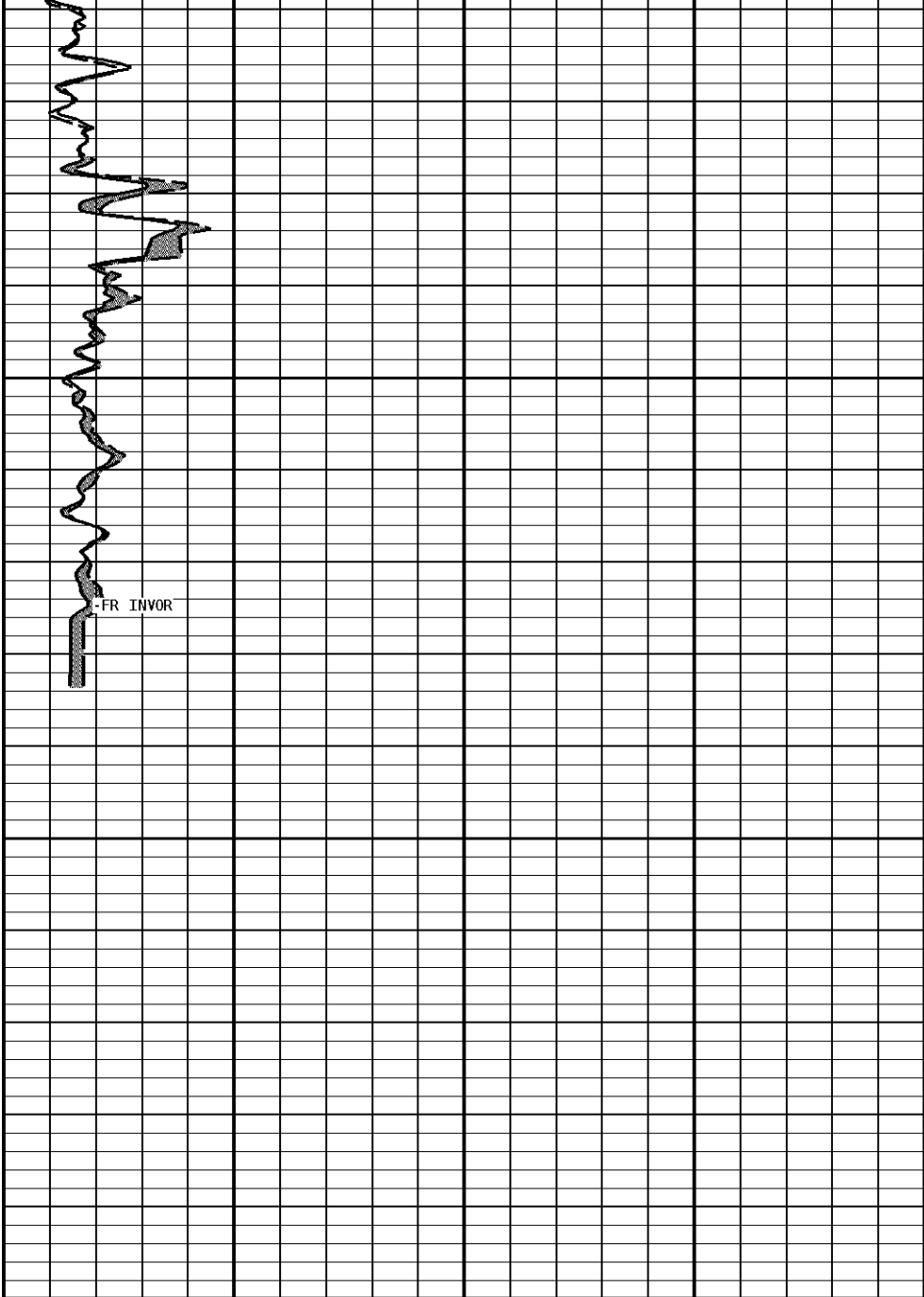




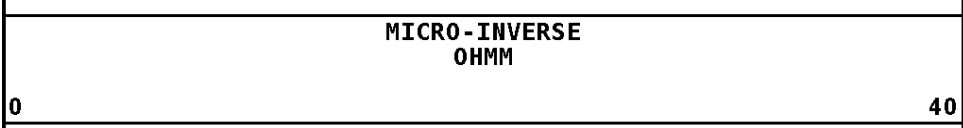
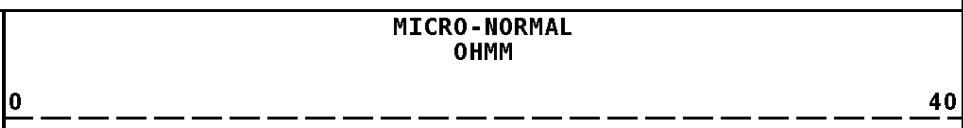
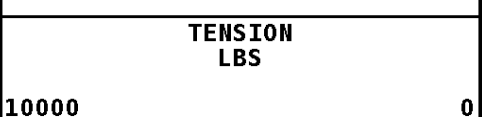
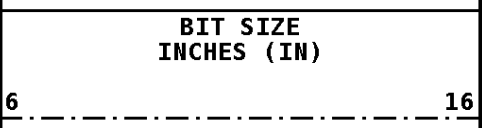
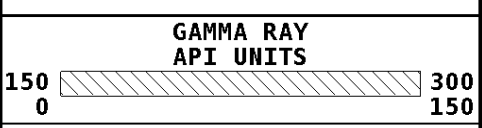
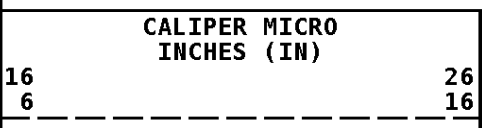
4200

4265

File #1.1.5



1:240 MAIN SECTION



Well File: ANDERSON NORTHTRUST 1 SEP17 QUINT DIPMETER

Scale: 1:240

Segment: V1.D1.S7 Reprocess of REPEAT

Acquired: 2012-09/17 06:27 3.2.0-11172

Reference: 0

Processed: 2012-09/17 06:38 3.2.0-11172

TENSION
LBS

10000 0

BIT SIZE
INCHES (IN)

6 16

GAMMA RAY
API UNITS

150 0 300 150

CALIPER MICRO
INCHES (IN)

16 6 26 16

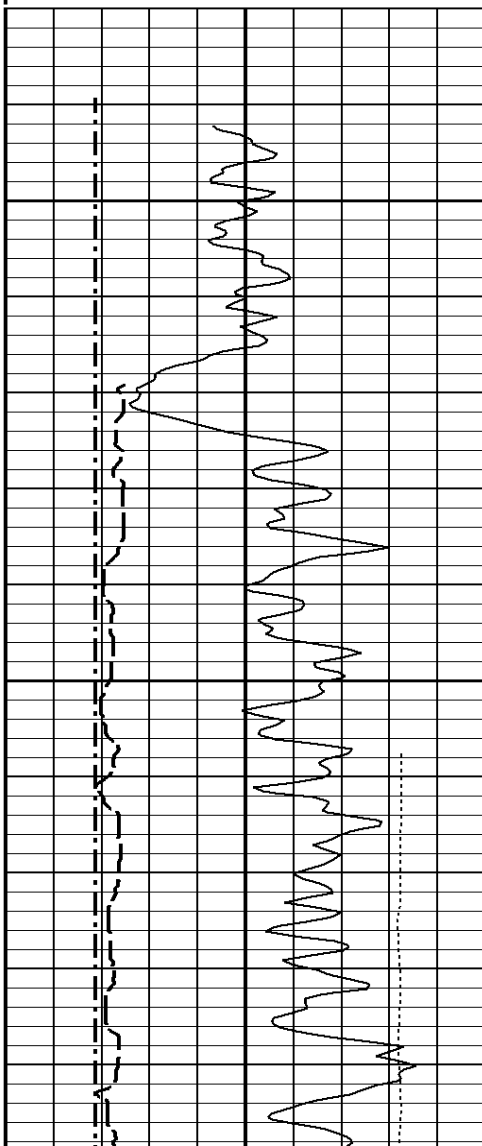
MICRO-INVERSE
OHMM

0 40

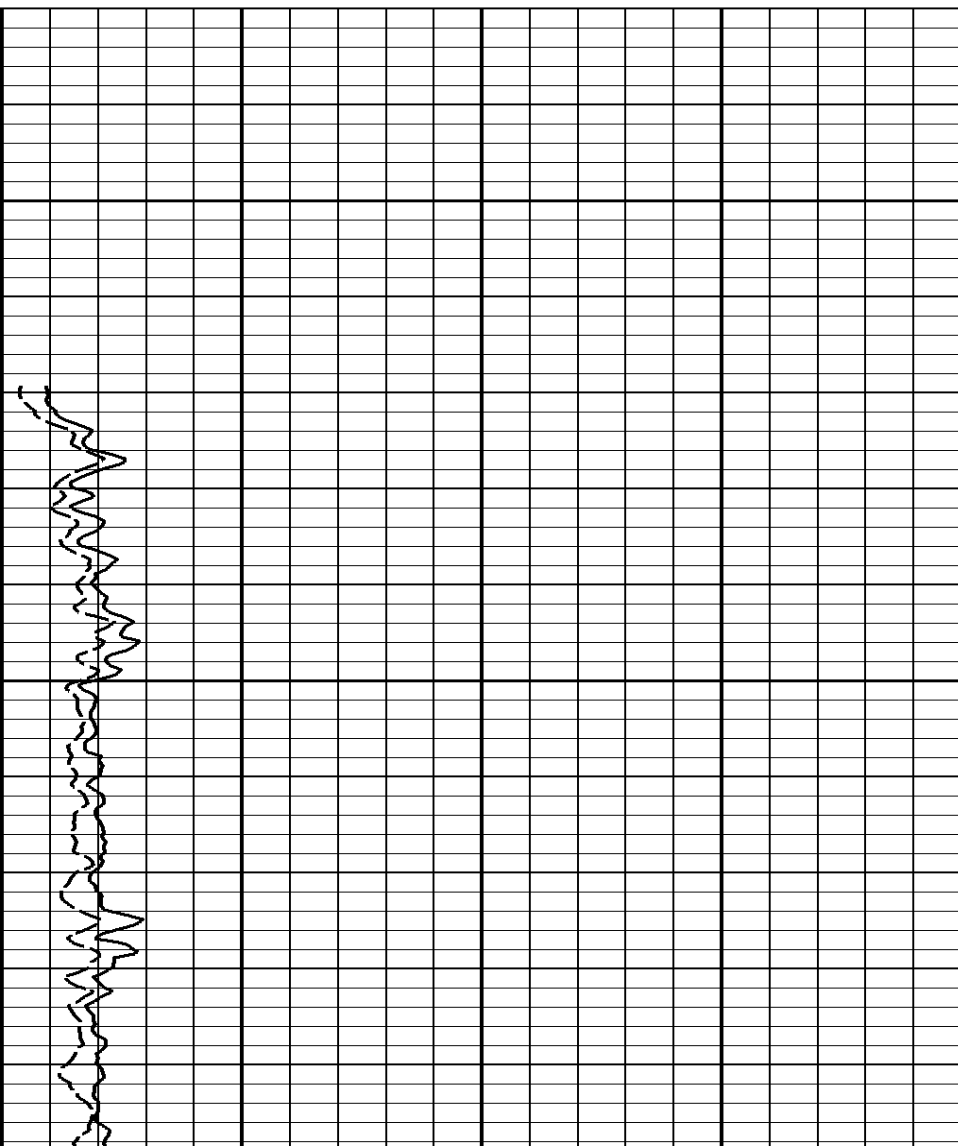
MICRO-NORMAL
OHMM

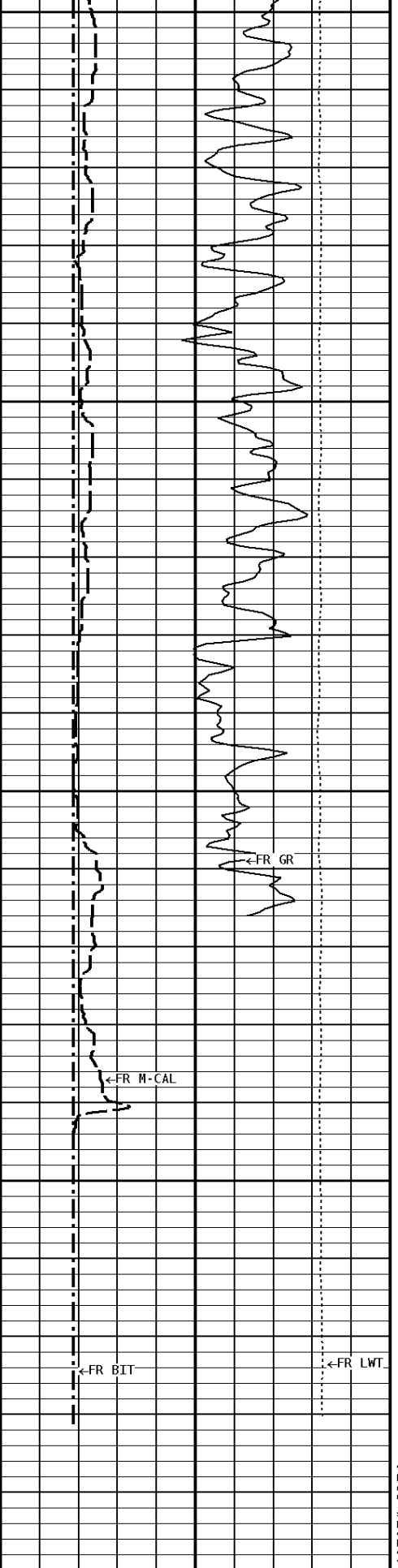
0 40

1:240 REPEAT SECTION



1200



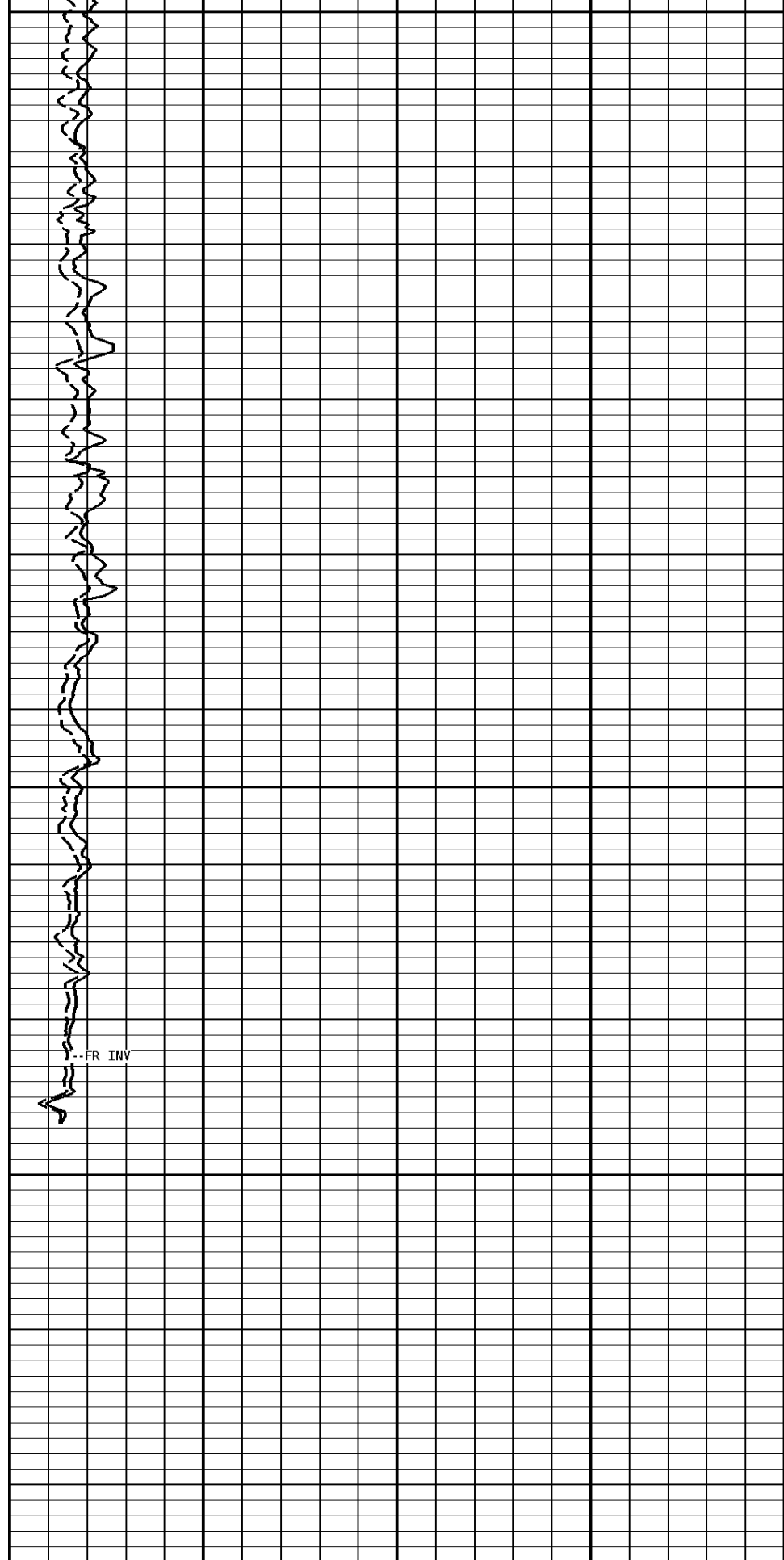


1300

1400

1474

File #1.1.7



FR INV

1:240 REPEAT SECTION

CALIPER MICRO INCHES (IN)	
16 6	26 16
GAMMA RAY API UNITS	
150 0	300 150
BIT SIZE INCHES (IN)	
6	16
TENSION LBS	
10000	0

MICRO-NORMAL OHMM	
0	40
MICRO-INVERSE OHMM	
0	40

*** Calibration Summary ***

Shop Calibration						
GRT-B						
Performed : 12-Jul-2012			Time : 09:53			
Sensor Suite : GR-GR5			ID : GRT-BC-43			
	Measured	Units	Calibrated	Units		
GR	Background	Jig	Jig	GRAPI		
	46	309	175			
Shop Calibration						
MST-DA						
Performed : 30-JUL-2012			Time : 14:56			
Sensor Suite : CALI-MSN			ID : MLT-DA-21			
	Jig - Measured	Jig - Calibrated	Units			
CL # 1	Ring#1 Ring#2	Ring#1 Ring#2	IN.			
	6.9 11.3	6.0 12.0				
Performed : 12-Jul-2012			Time : 10:32			
Sensor Suite : MSTDA-NI			ID : MLT-DA-21			
Internal						
	Measured	Units	Calibrated	Units		
	Zero Reference		Zero Reference			
INV-V	0.0 29787.6		0.00 1946.00	MV		
NOR-V	18.9 30109.6		0.00 1546.00	MV		
IN-C	0.0 60619.2		0.00 15.46	UA		
INV-R			40.71	OHMM		
NOR-R			55.11	OHMM		
Performed : 12-Jul-2012			Time : 10:35			
Sensor Suite : MSTDAMSF			ID : MLT-DA-21			
Internal						
	Measured	Units	Calibrated	Units		
	Zero Reference		Zero Reference			
MSFC	15.0 42170.2		0.00 1522.00	UA		
MSFB	32729.5 54955.1		0.00 1522.00	MA		
MOM1	0.0 43114.6		0.00 1522.00	MV		
MSFRA			43.30	OHMM		



Tucker
WIRELINE SERVICES

Company: ANDERSON ENERGY, INC
 Well: NORTH TRUST #1
 Location: 385' FNL & 330' FWL
 Logged: 2012-09-17
 K.B. Elev: 2170.0

