



Pioneer Energy Services

Microresistivity Log

API No.	15-051-26393-00-00	
Company	American Warrior, Inc.	
Well	Nicholson #1-16	
Field	District 57 North	
County	Ellis	State
Location	2106' FSL & 1512' FWL	
Sec:	16	Twp: 12S Rge: 20W
Other Services	CNL/CDL DIL	

Permanent Datum	Ground Level	Elevation 2239
Log Measured From	Kelly Bushing	8 Ft. Above Perm. Datum
Drilling Measured From	Kelly Bushing	
Date	9/30/2012	
Run Number	Two	
Depth Driller	4000	
Depth Logger	4002	
Bottom Logged Interval	4001	
Top Log Interval	3200	
Casing Driller	8.625 @ 223	
Casing Logger	222	
Bit Size	7.875	
Type Fluid in Hole	Chemical	
Salinity, ppm CL	4000	
Density / Viscosity	9.0	60
pH / Fluid Loss	10.5	8.0
Source of Sample	Flowline	
Rm @ Meas. Temp	0.55 @	68
Rmf @ Meas. Temp	0.41 @	68
Rmc @ Meas. Temp	0.74 @	68
Source of Rmf / Rmc	Charts	
Rm @ BHT	0.32 @	118
Operating Rig Time	4 Hours	
Max Rec. Temp. F	118	
Equipment Number	91	
Location	Hays	
Recorded By	D. Schmidt	
Witnessed By	Jason Alm	

<<< Fold Here >>>

All interpretations are opinions based on inferences from electrical or other measurements and we cannot and do not guarantee the accuracy or correctness of any interpretation, and we shall not, except in the case of gross or willful negligence on our part, be liable or responsible for any loss, costs, damages, or expenses incurred or sustained by anyone resulting from any interpretation made by any of our officers, agents or employees. These interpretations are also subject to our general terms and conditions set out in our current Price Schedule.

Comments

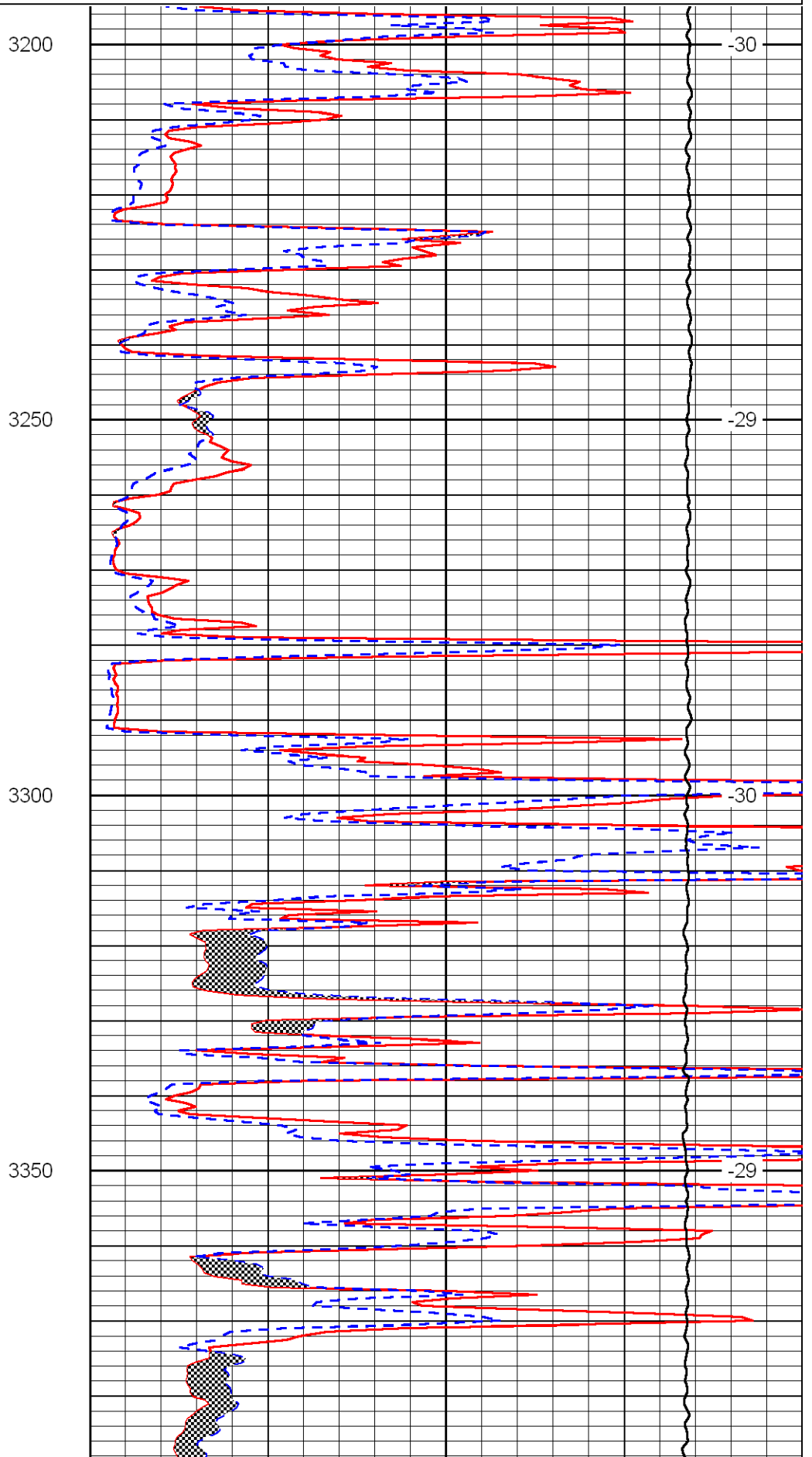
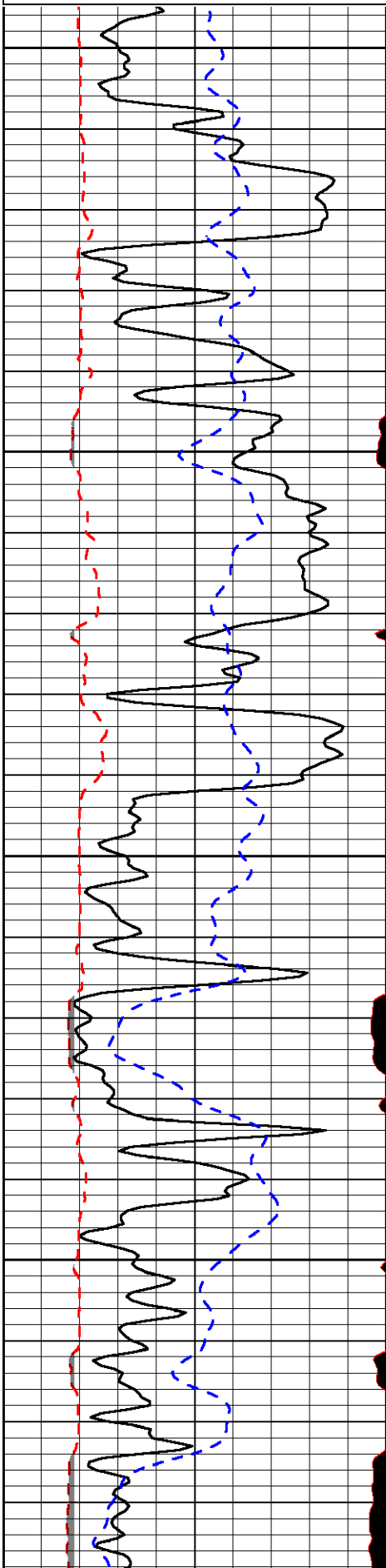
Thank you for using Log-Tech, Inc.
 (785) 625-3858

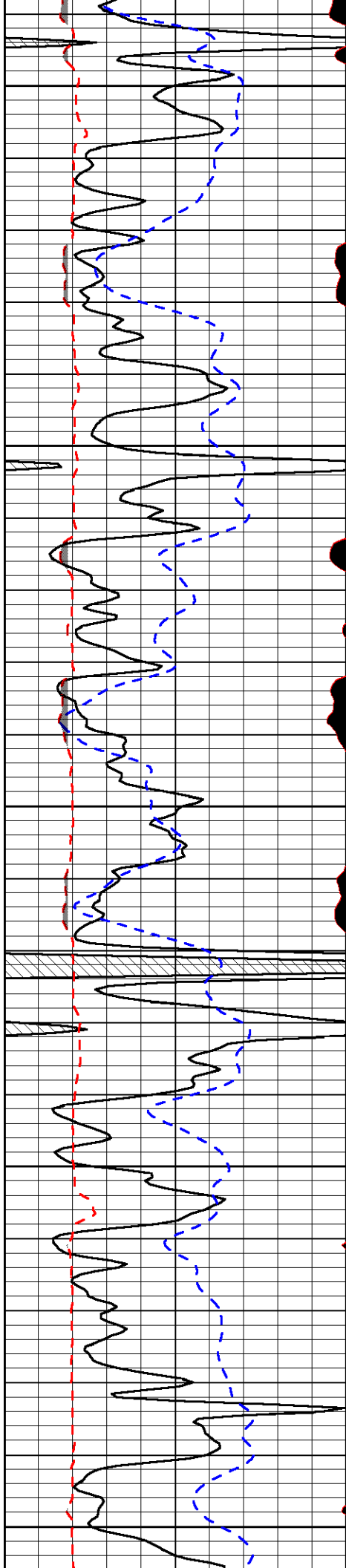
 Ellis,
 2 1/2 North to curve, continue 1 1/4 North,
 East into thru gate

Database File: aw_092912hd.db
 Dataset Pathname: dil/awstack
 Presentation Format: micro
 Dataset Creation: Sun Sep 30 05:51:04 2012
 Charted by: Depth in Feet scaled 1:240

0	Gamma Ray	150
6	MCAL (GAPI)	16
2.875	Mud Cake (GAPI)	7.875
-200	SP	0

0	Micro Inverse 1 X 1	40
0	Micro Normal 2"	40
10000	Line Weight	0
		LSPD





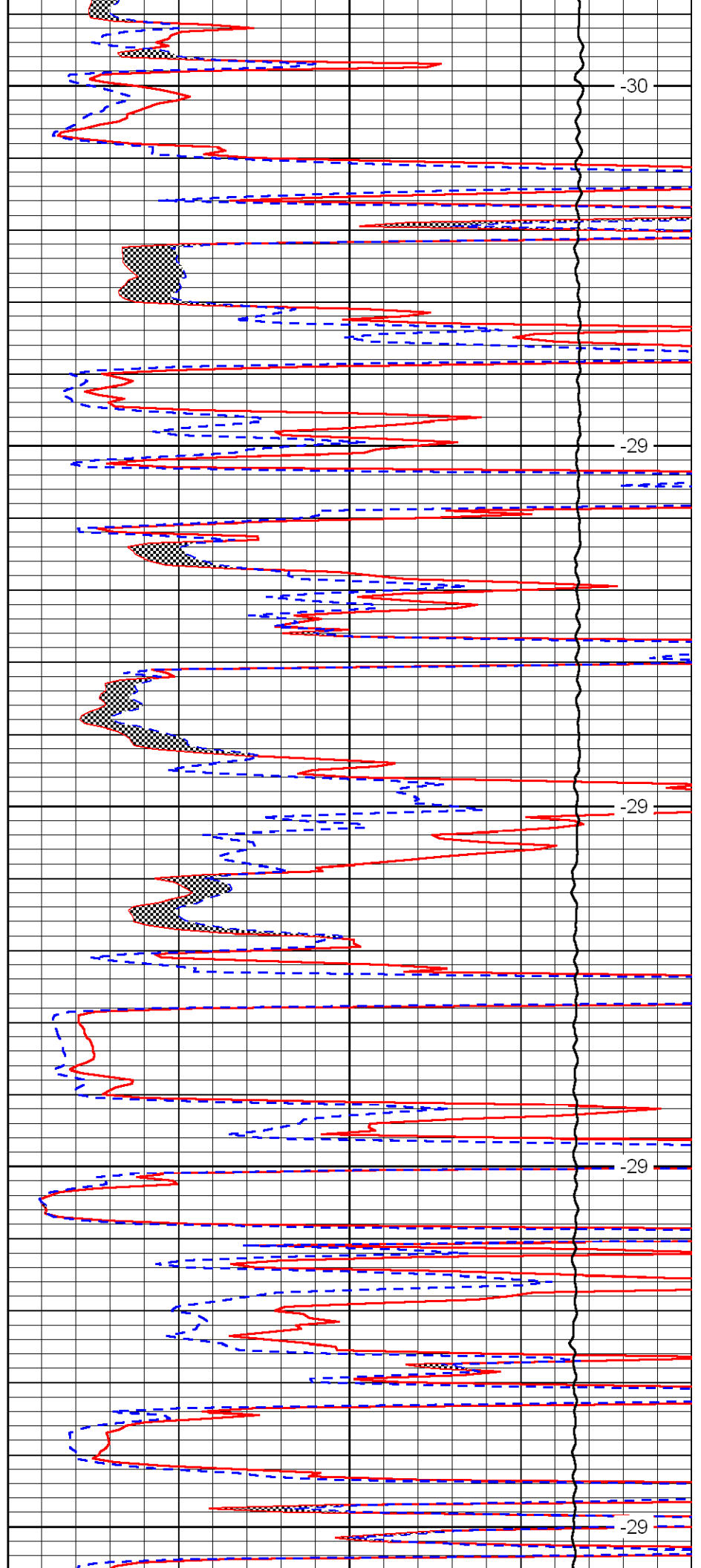
3400

3450

3500

3550

3600



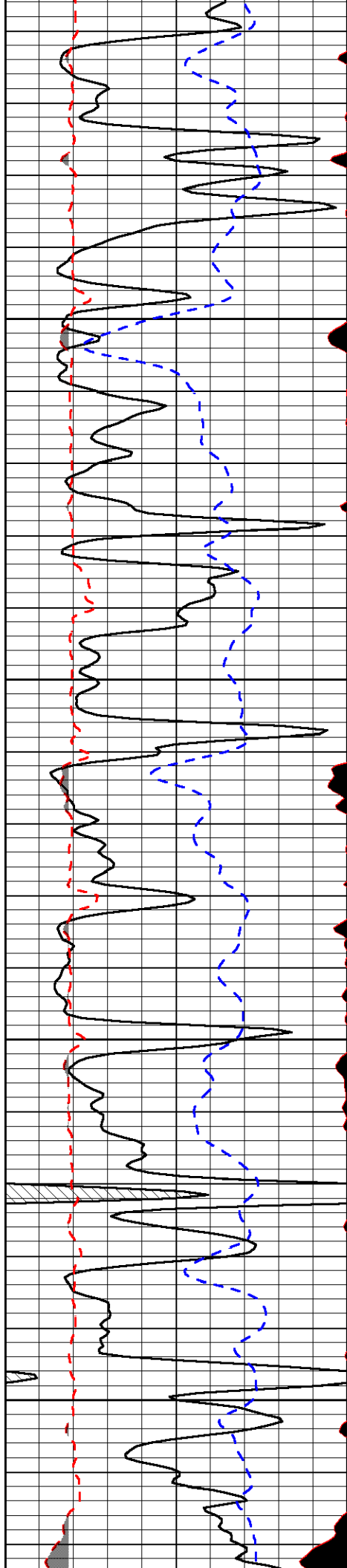
-30

-29

-29

-29

-29

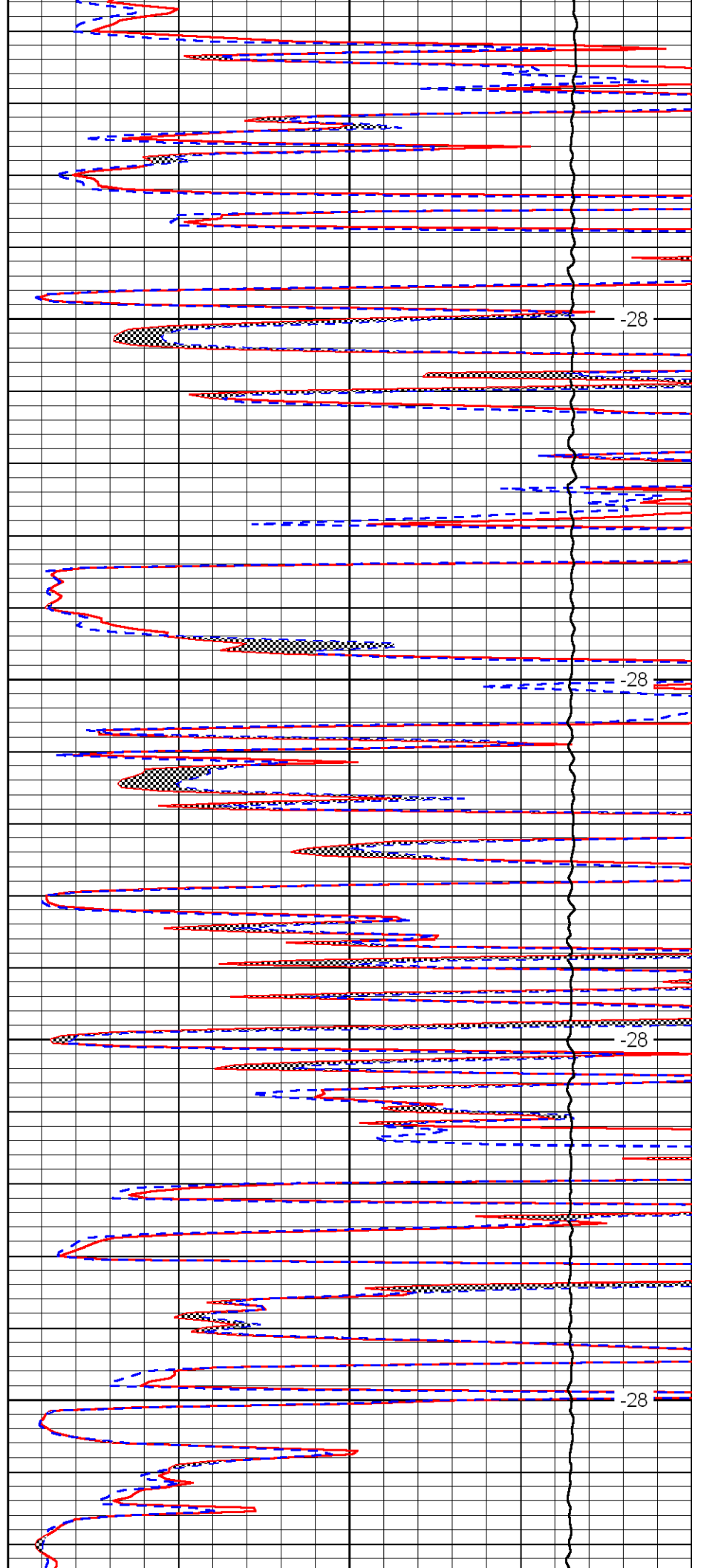


3650

3700

3750

3800

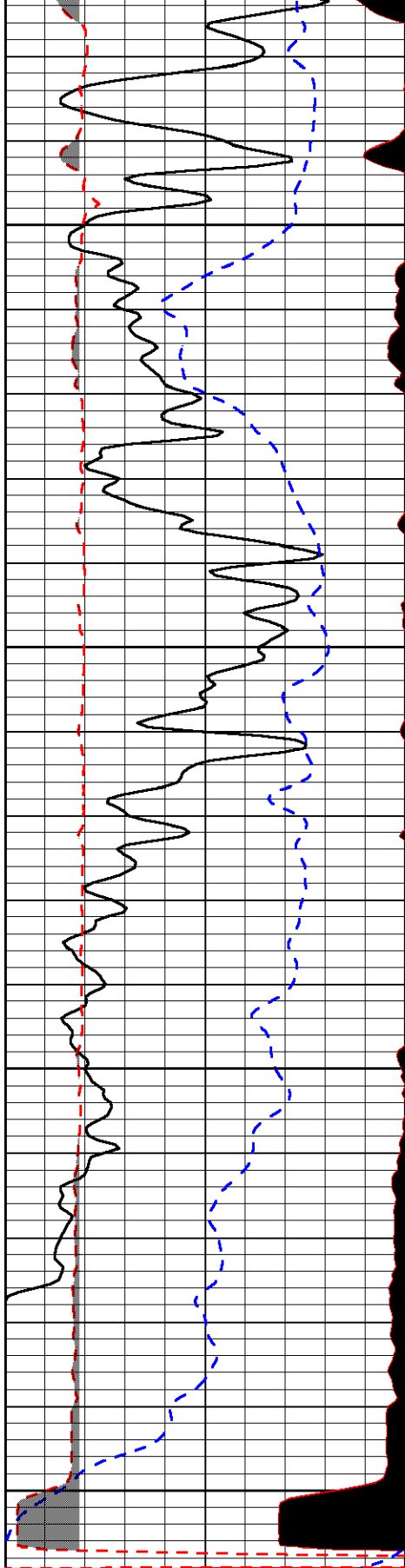


-28

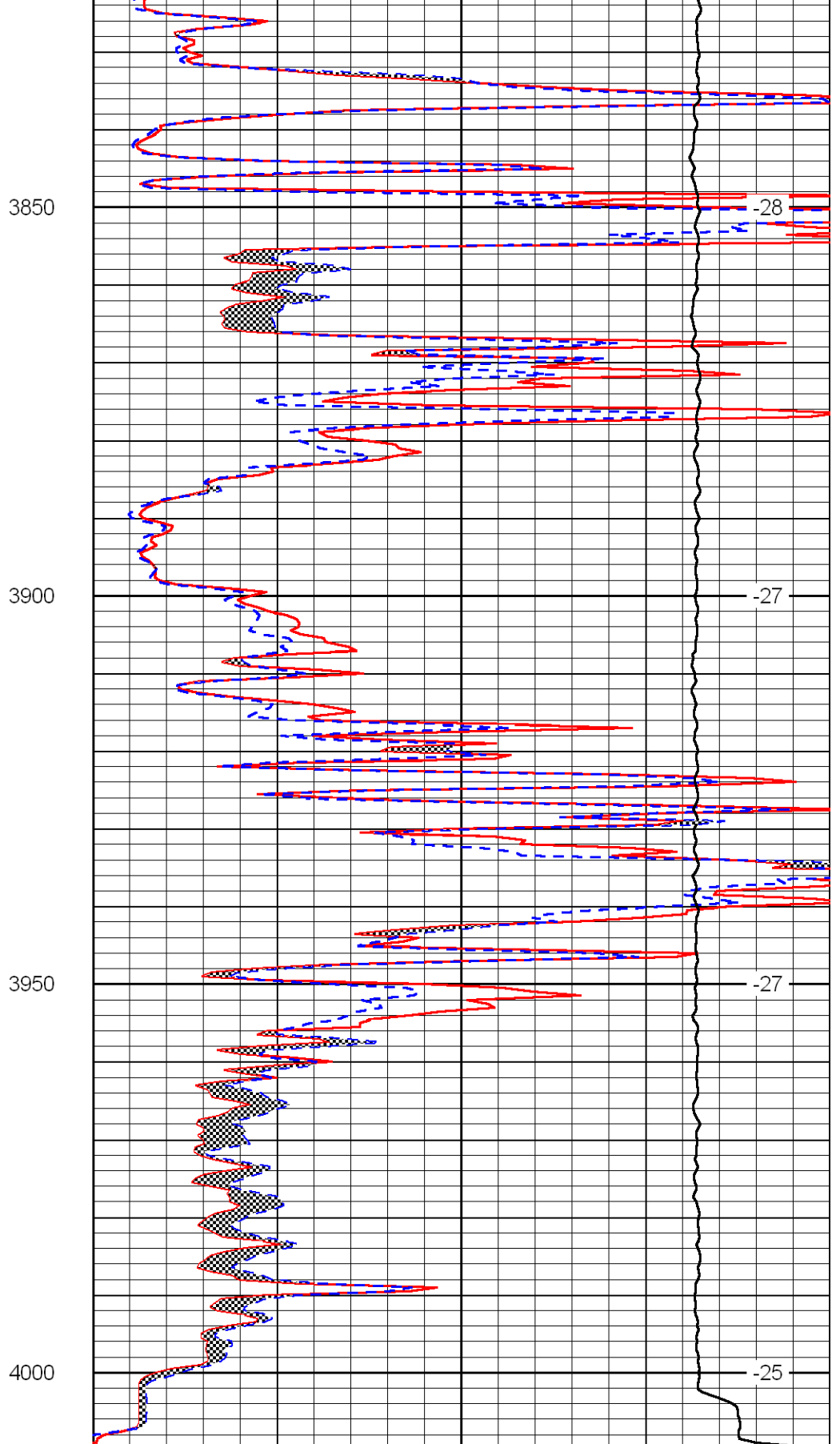
-28

-28

-28



0	Gamma Ray	150
6	MCAL (GAPI)	16
2.875	Mud Cake (GAPI)	7.875
-200	SP	0



0	Micro Inverse 1 X 1	40
0	Micro Normal 2''	40
10000	Line Weight	0

LSPD