



Pioneer Energy Services

Dual Induction Log

API No.	15-051-26393-00-00	
Company	American Warrior, Inc.	
Well	Nicholson #1-16	
Field	District 57 North	
County	Ellis	State
Location	2106' FSL & 1512' FWL	
Sec:	16	Twp: 12S Rge: 20W
Other Services	CNL/CDL MEL	
Elevation	K.B. 2247 D.F. 2239 G.L. 2239	

Permanent Datum	Ground Level	Elevation 2239
Log Measured From	Kelly Bushing	8 Ft. Above Perm. Datum
Drilling Measured From	Kelly Bushing	
Date	9/30/2012	
Run Number	One	
Depth Driller	4000	
Depth Logger	4002	
Bottom Logged Interval	4001	
Top Log Interval	200	
Casing Driller	8.625 @ 223	
Casing Logger	222	
Bit Size	7.875	
Type Fluid in Hole	Chemical	
Salinity, ppm CL	4000	
Density / Viscosity	9.0	60
pH / Fluid Loss	10.5	8.0
Source of Sample	Flowline	
Rm @ Meas. Temp	0.55 @ 68	
Rmf @ Meas. Temp	0.41 @ 68	
Rmc @ Meas. Temp	0.74 @ 68	
Source of Rmf / Rmc	Charts	
Rm @ BHT	0.32 @ 118	
Operating Rig Time	4 Hours	
Max Rec. Temp. F	118	
Equipment Number	91	
Location	Hays	
Recorded By	D. Schmidt	
Witnessed By	Jason Alm	

<<< Fold Here >>>

All interpretations are opinions based on inferences from electrical or other measurements and we cannot and do not guarantee the accuracy or correctness of any interpretation, and we shall not, except in the case of gross or willful negligence on our part, be liable or responsible for any loss, costs, damages, or expenses incurred or sustained by anyone resulting from any interpretation made by any of our officers, agents or employees. These interpretations are also subject to our general terms and conditions set out in our current Price Schedule.

Comments

Thank you for using Log-Tech, Inc.
 (785) 625-3858

 Ellis,
 2 1/2 North to curve, continue 1 1/4 North,
 East into thru gate

Database File: aw_092912hd.db
 Dataset Pathname: dil/awstack
 Presentation Format: dil2in
 Dataset Creation: Sun Sep 30 05:51:04 2012
 Charted by: Depth in Feet scaled 1:600

0 Gamma Ray 150
-200 SP 0

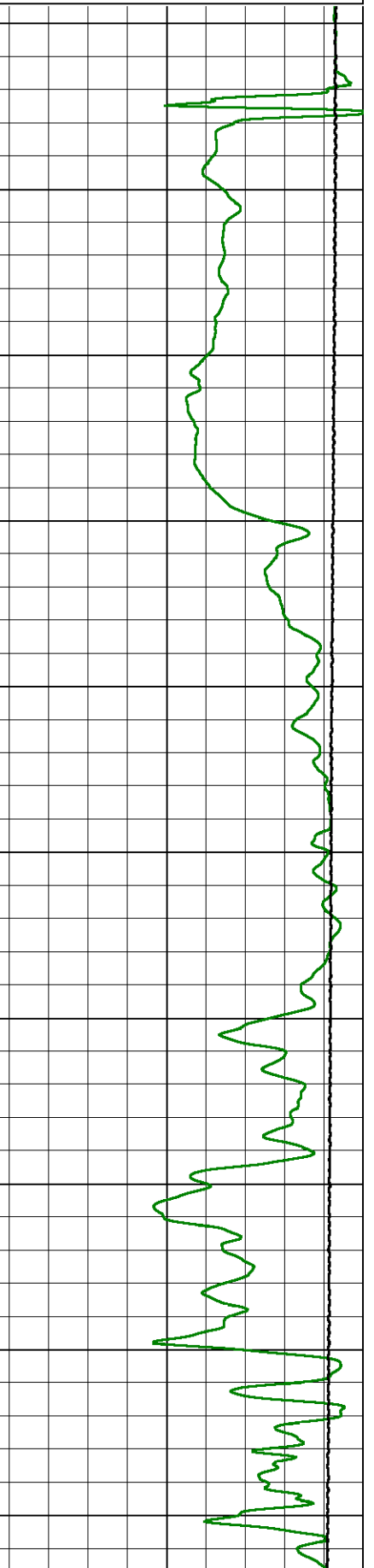
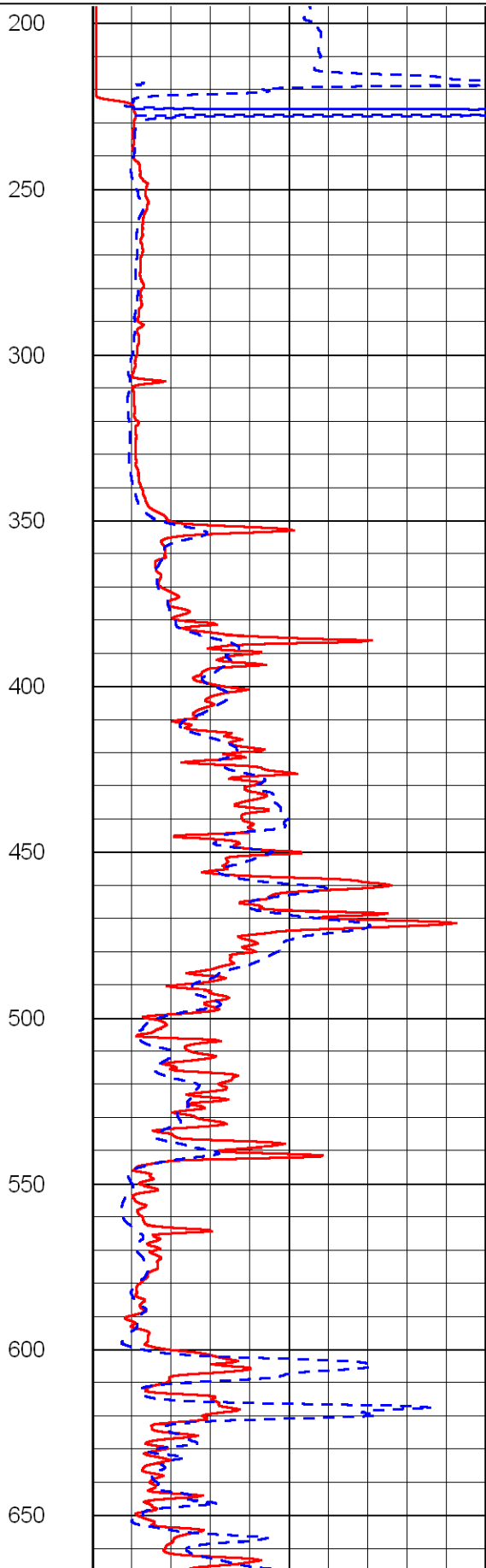
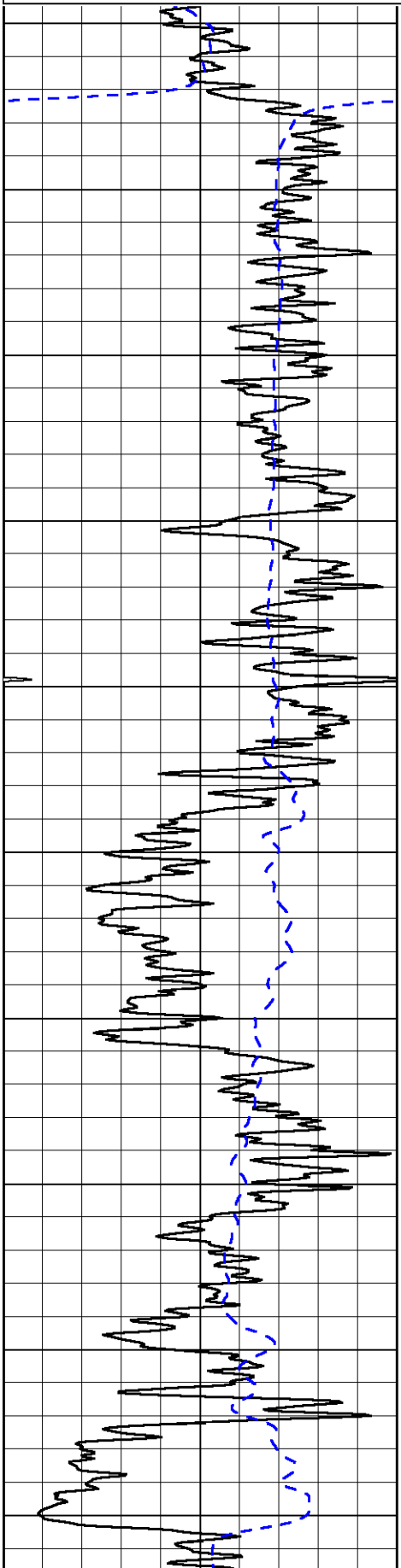
0 Shallow Resistivity 50
0 Deep Resistivity 50

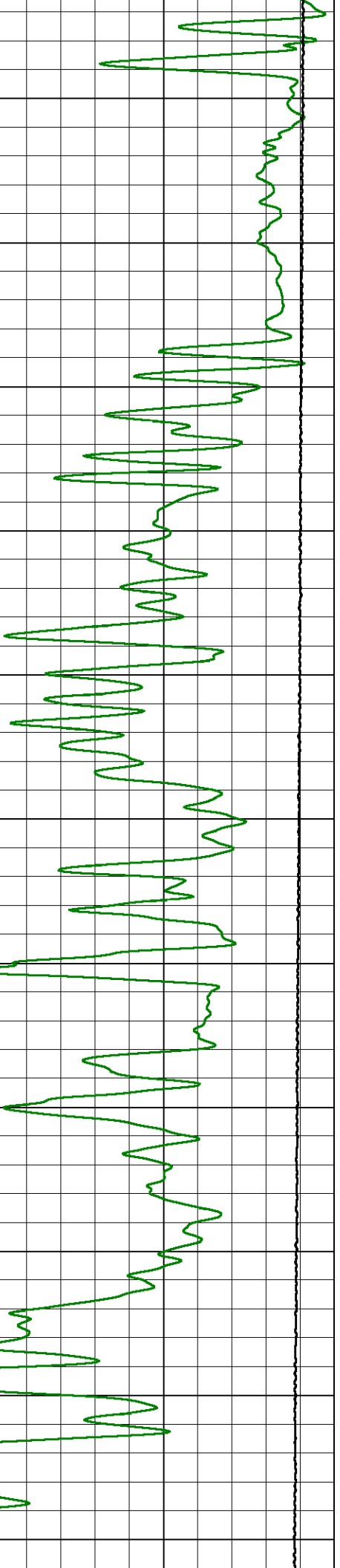
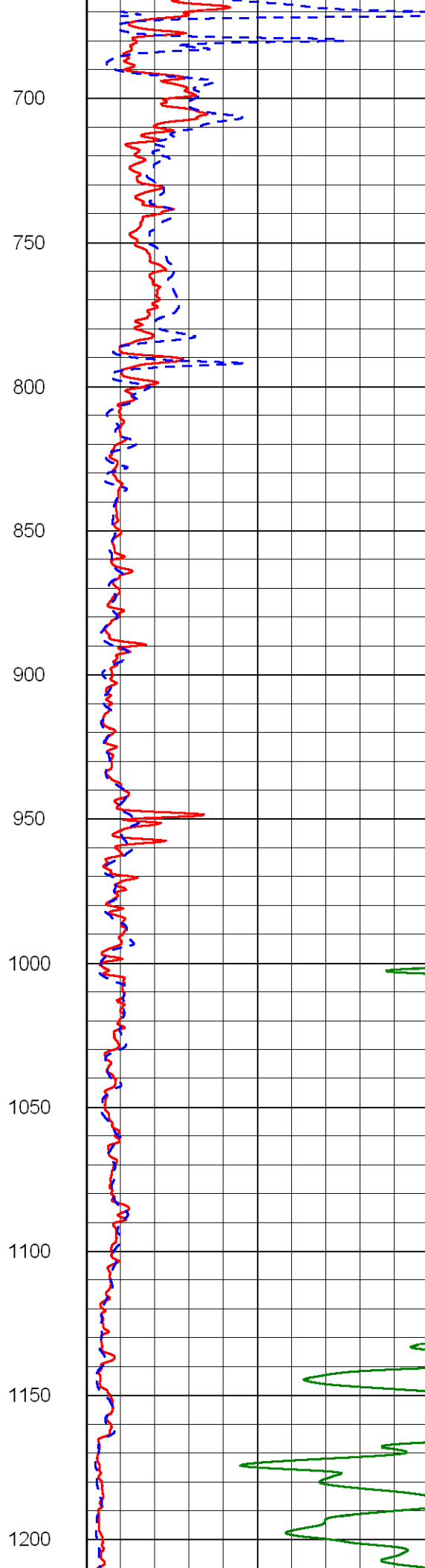
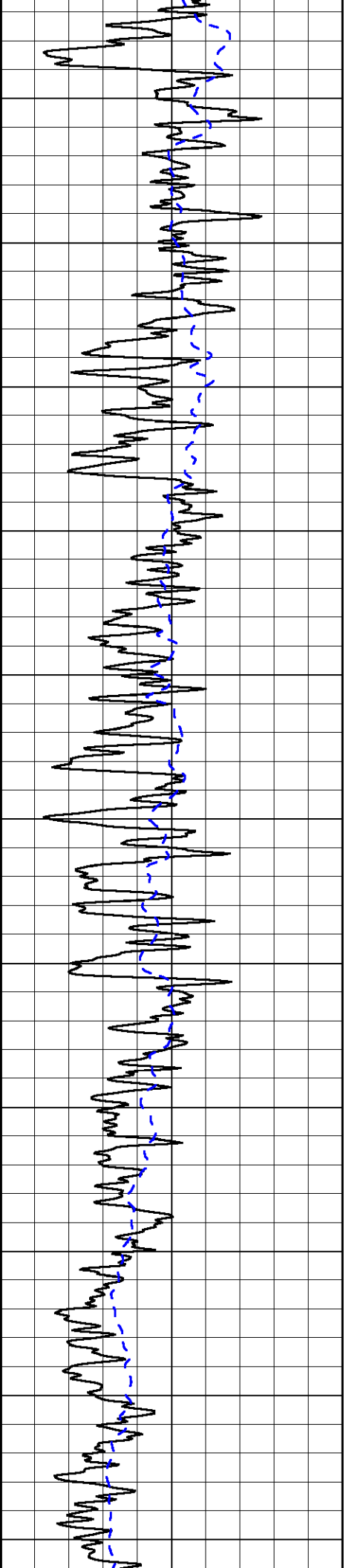
1000 Conductivity 0

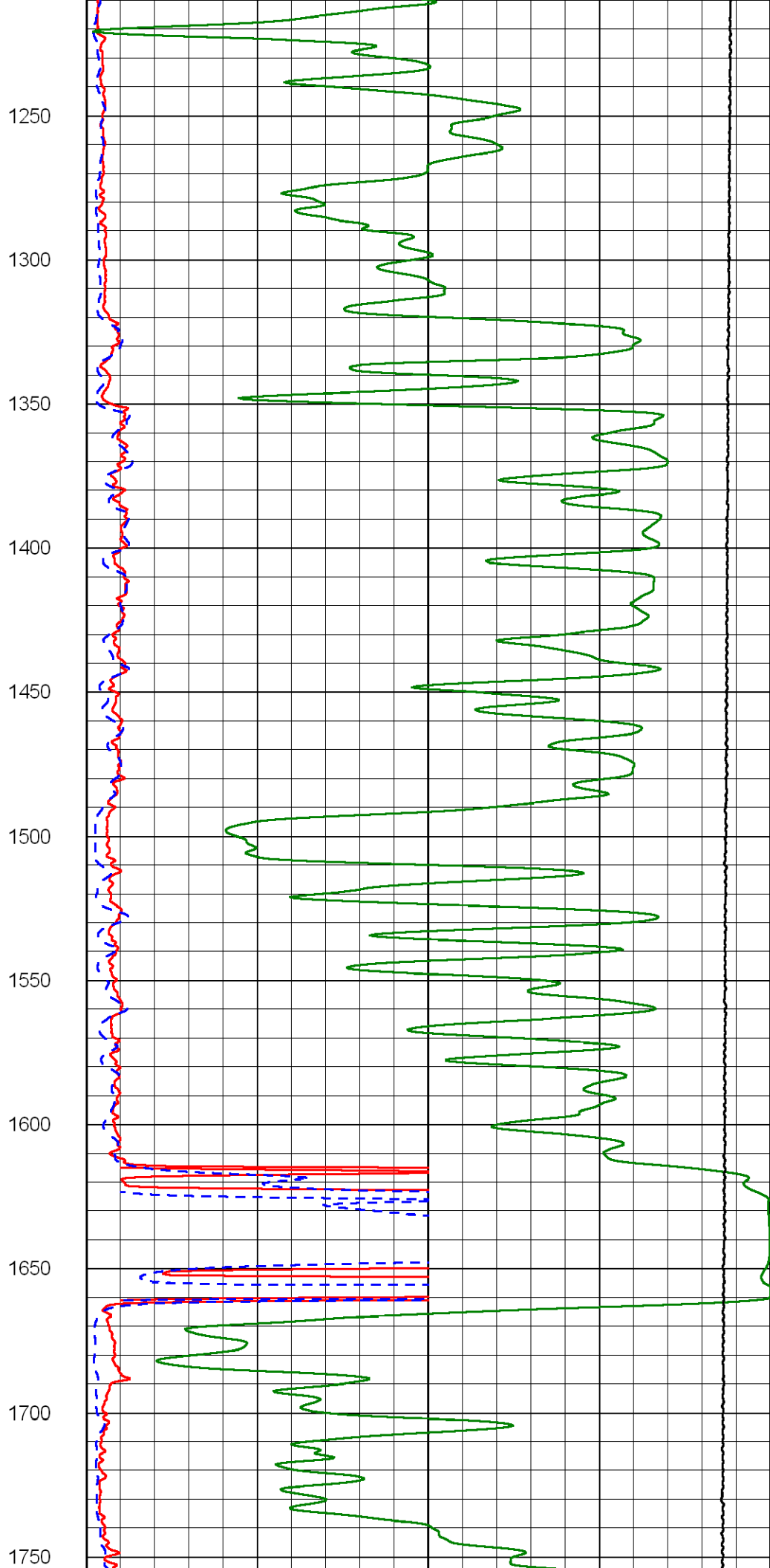
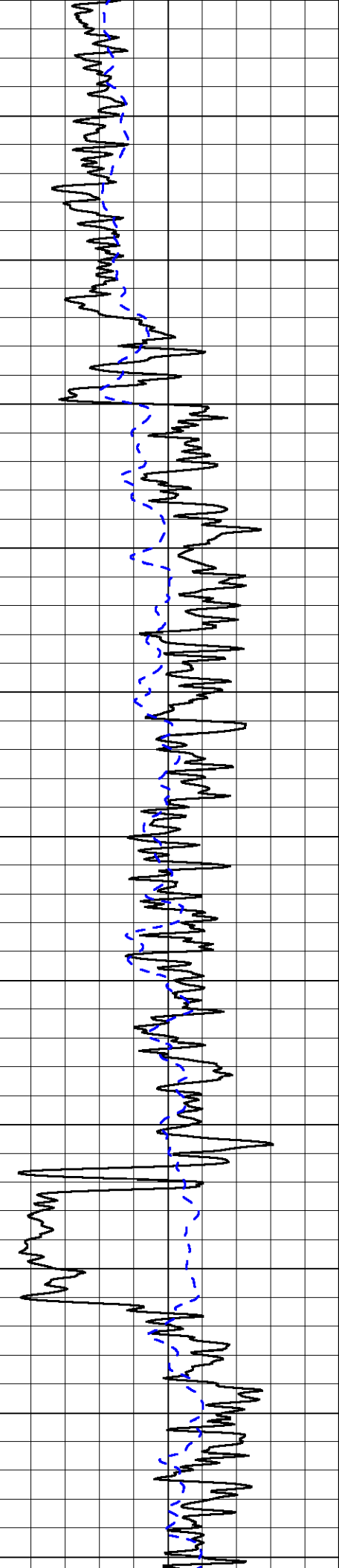
15000 Line Tension 0

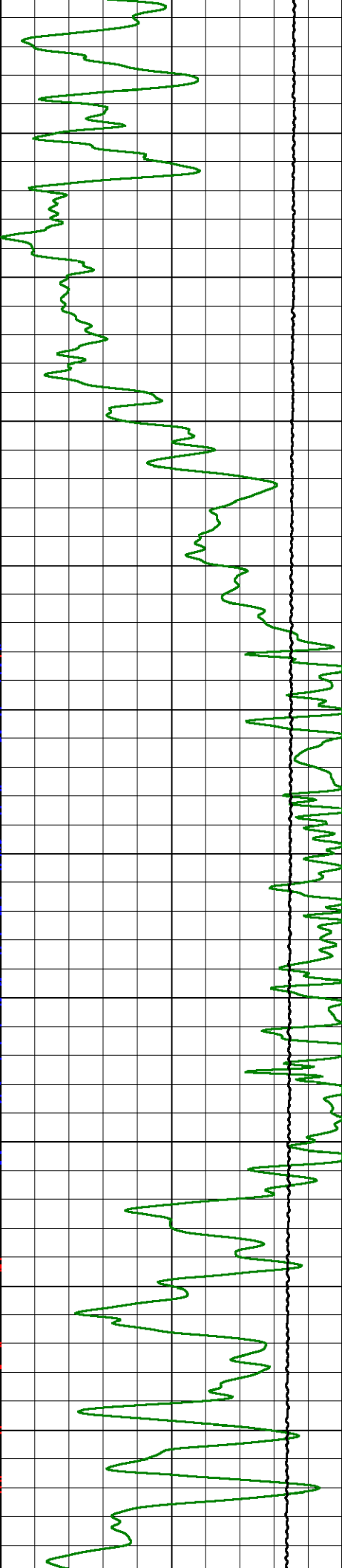
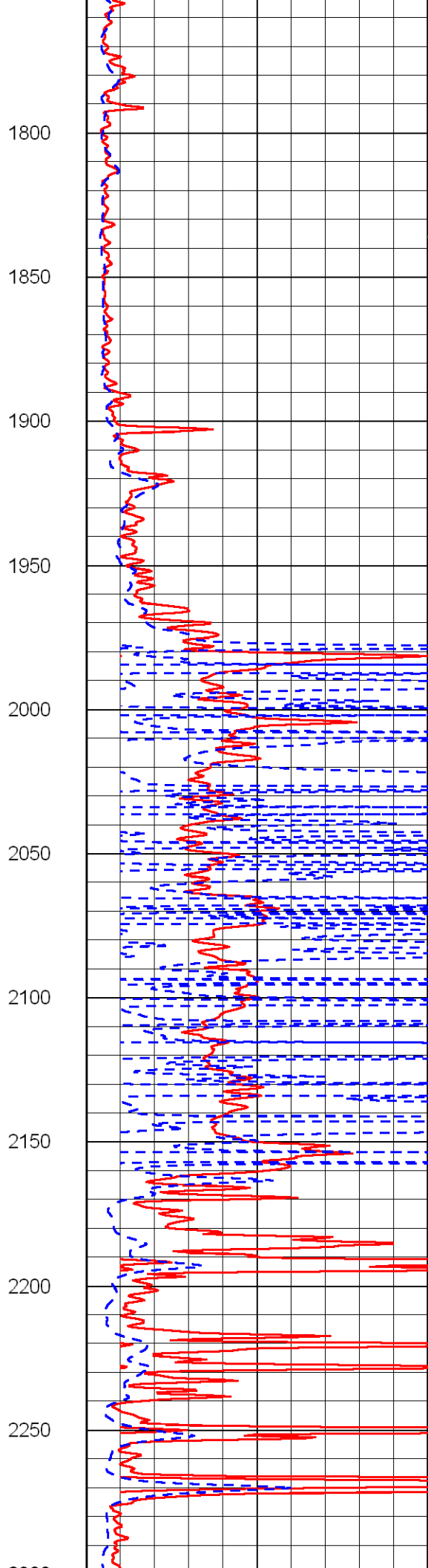
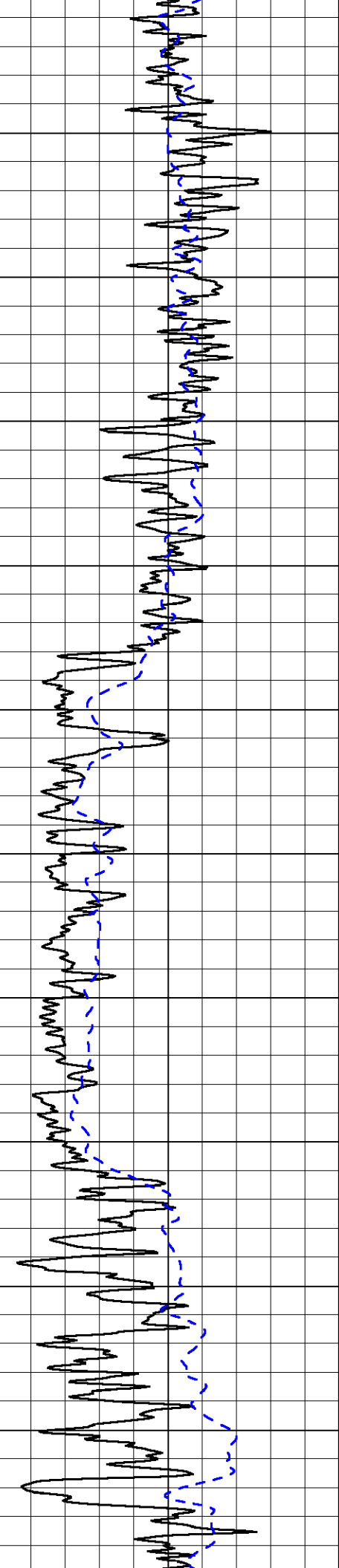
50 Shallow Resistivity 500

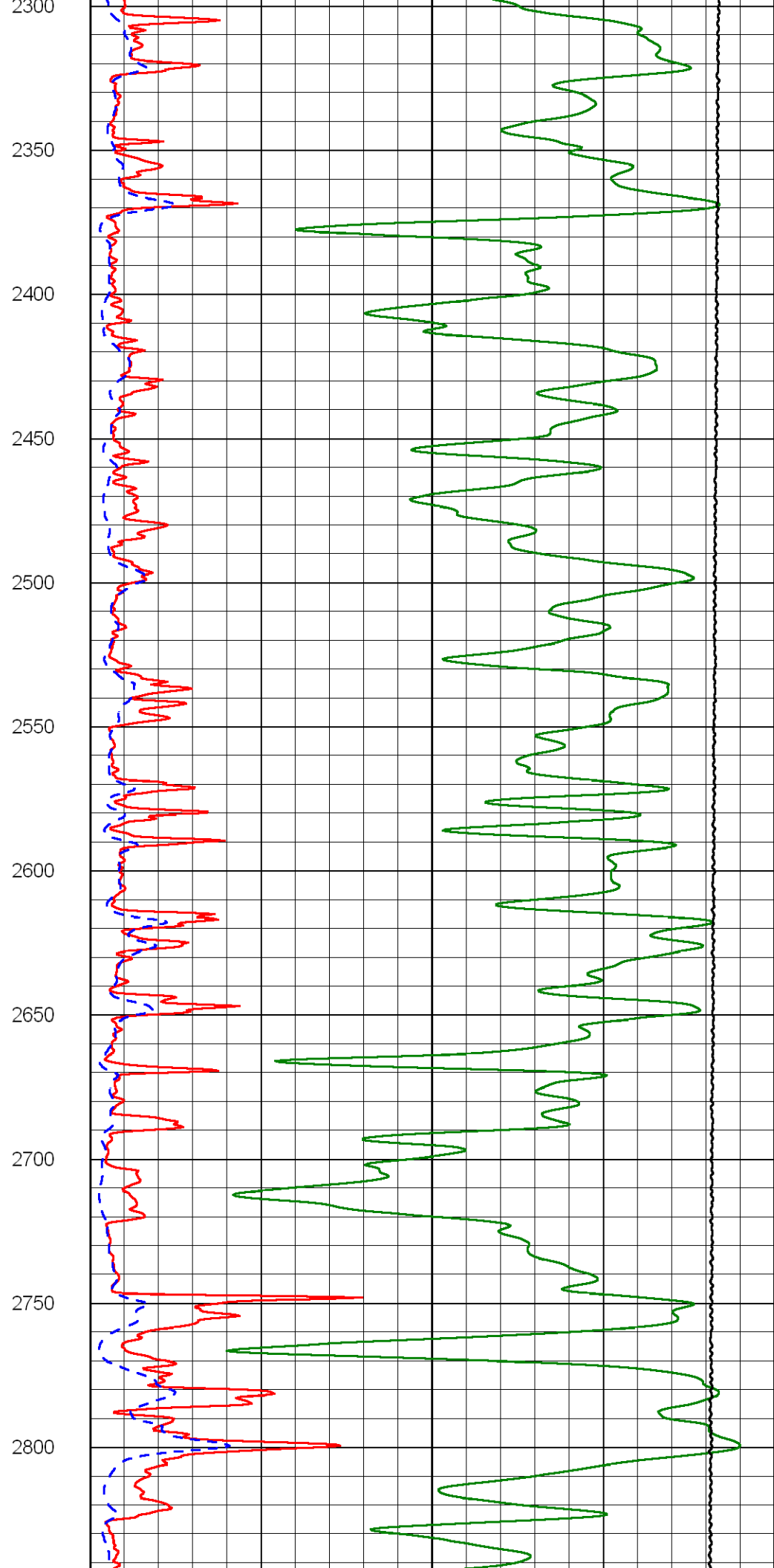
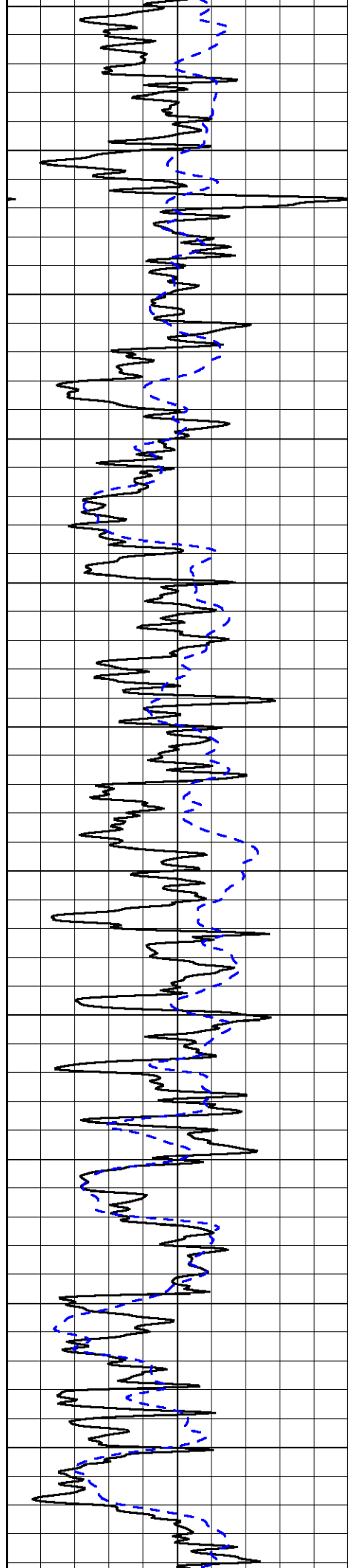
50 Deep Resistivity 500

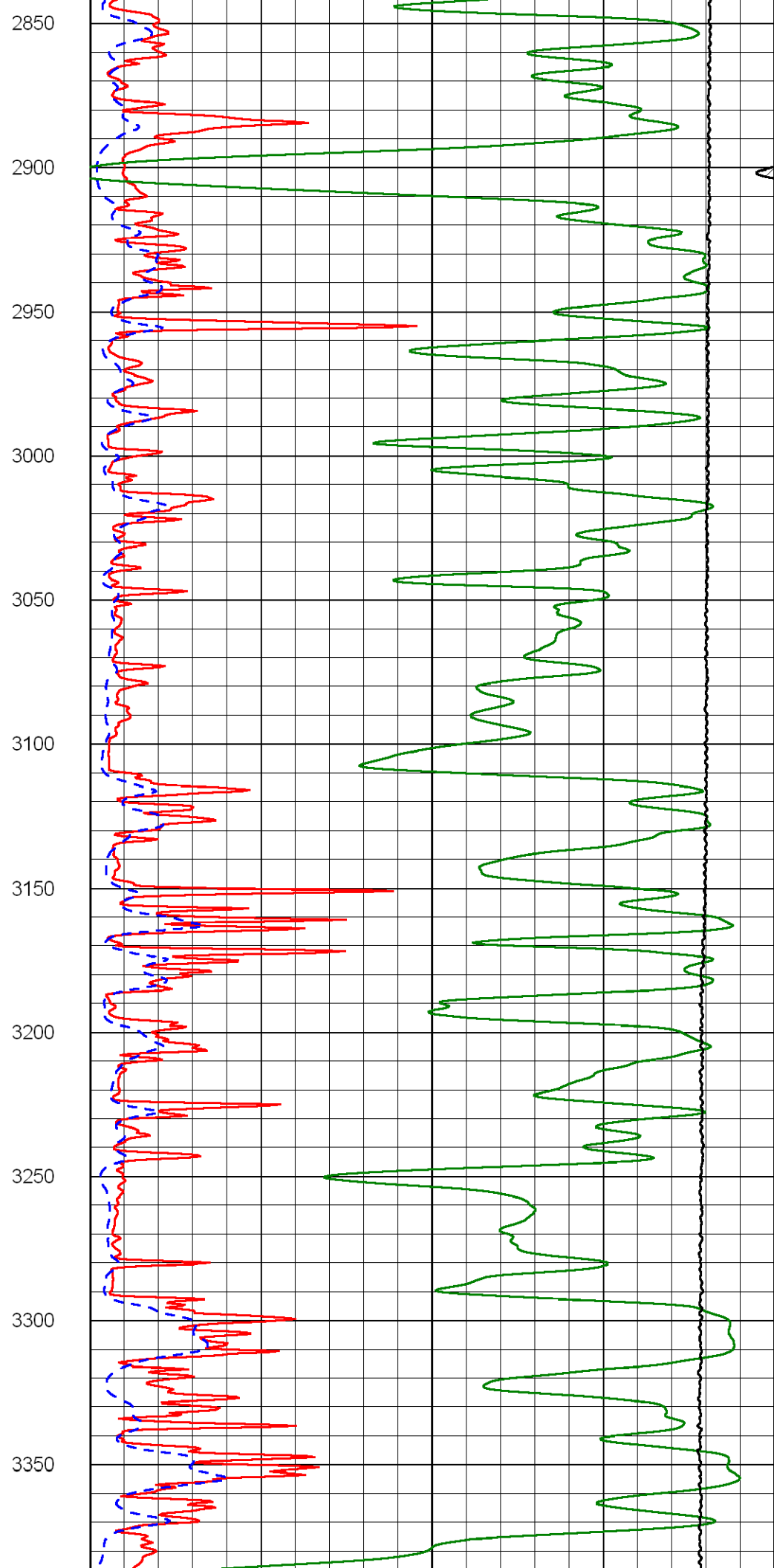
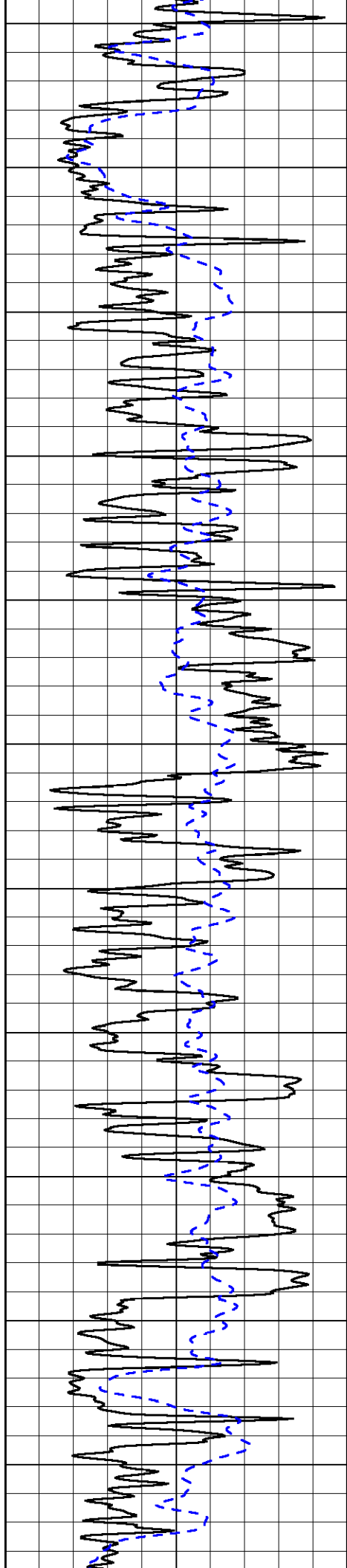


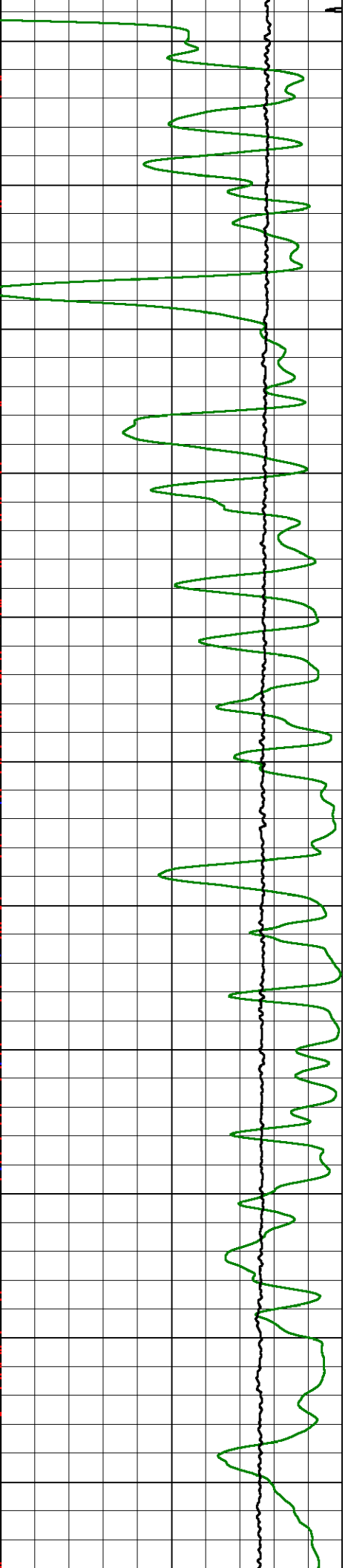
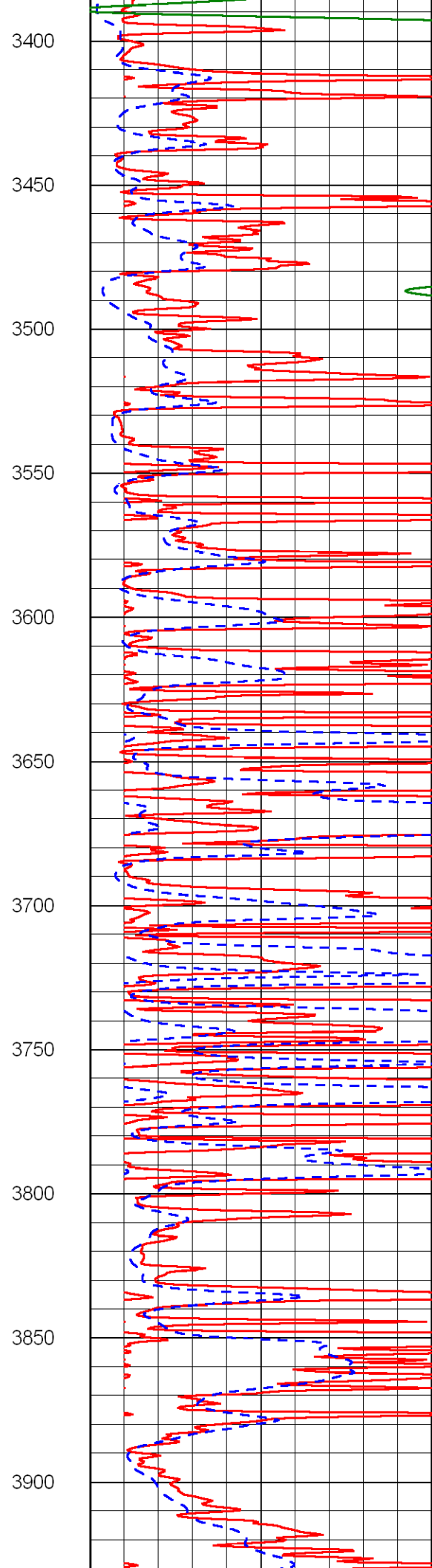
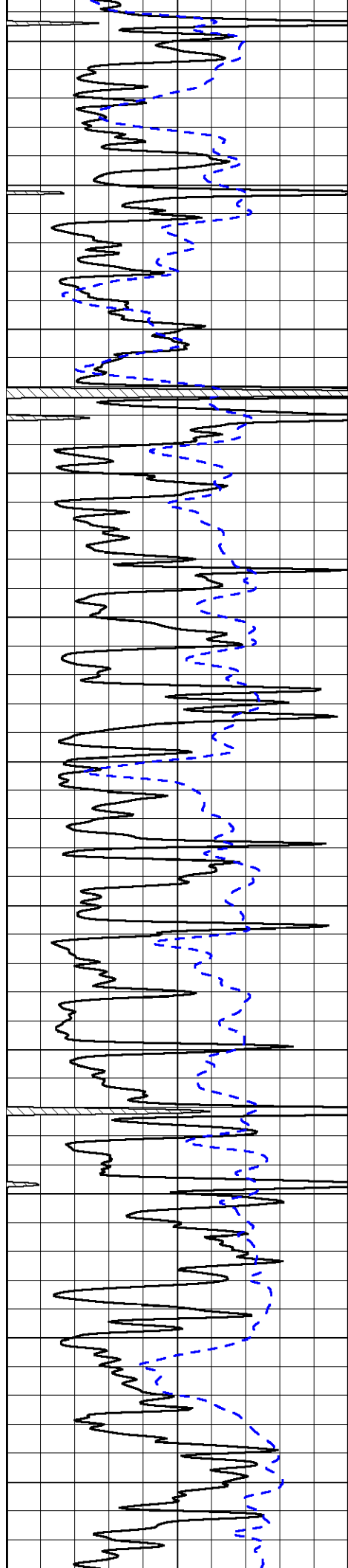


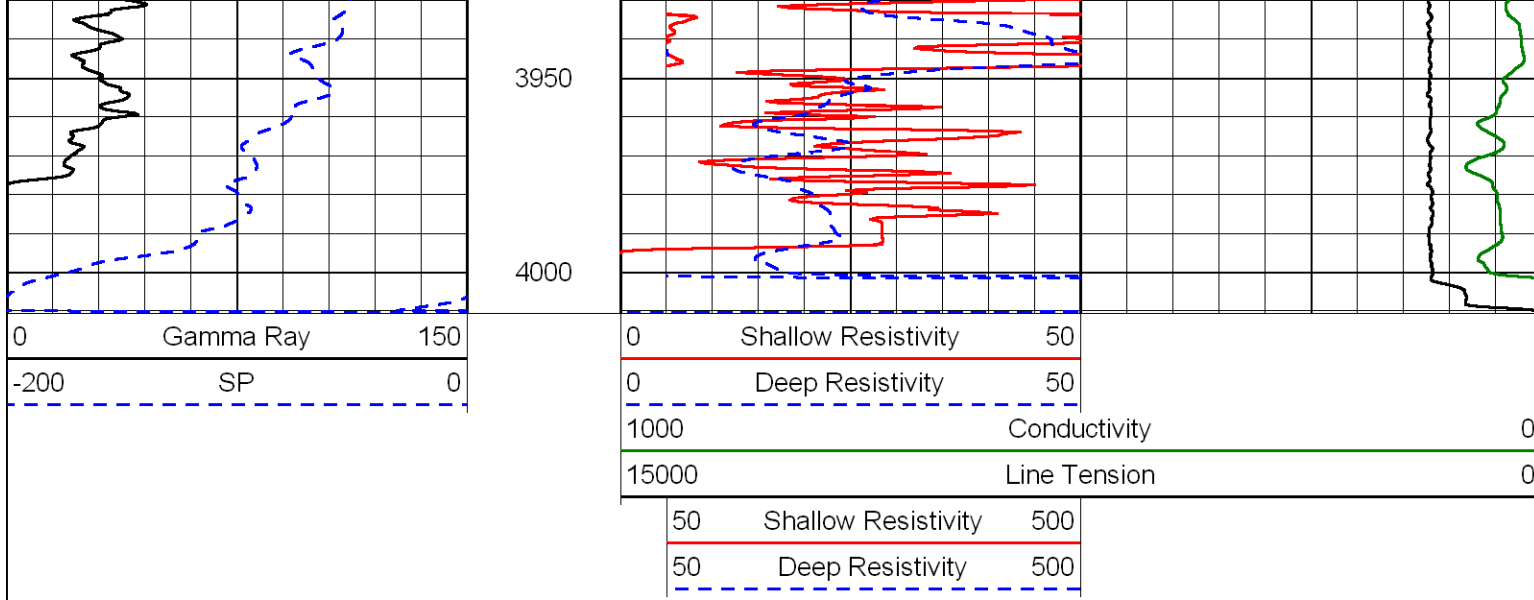




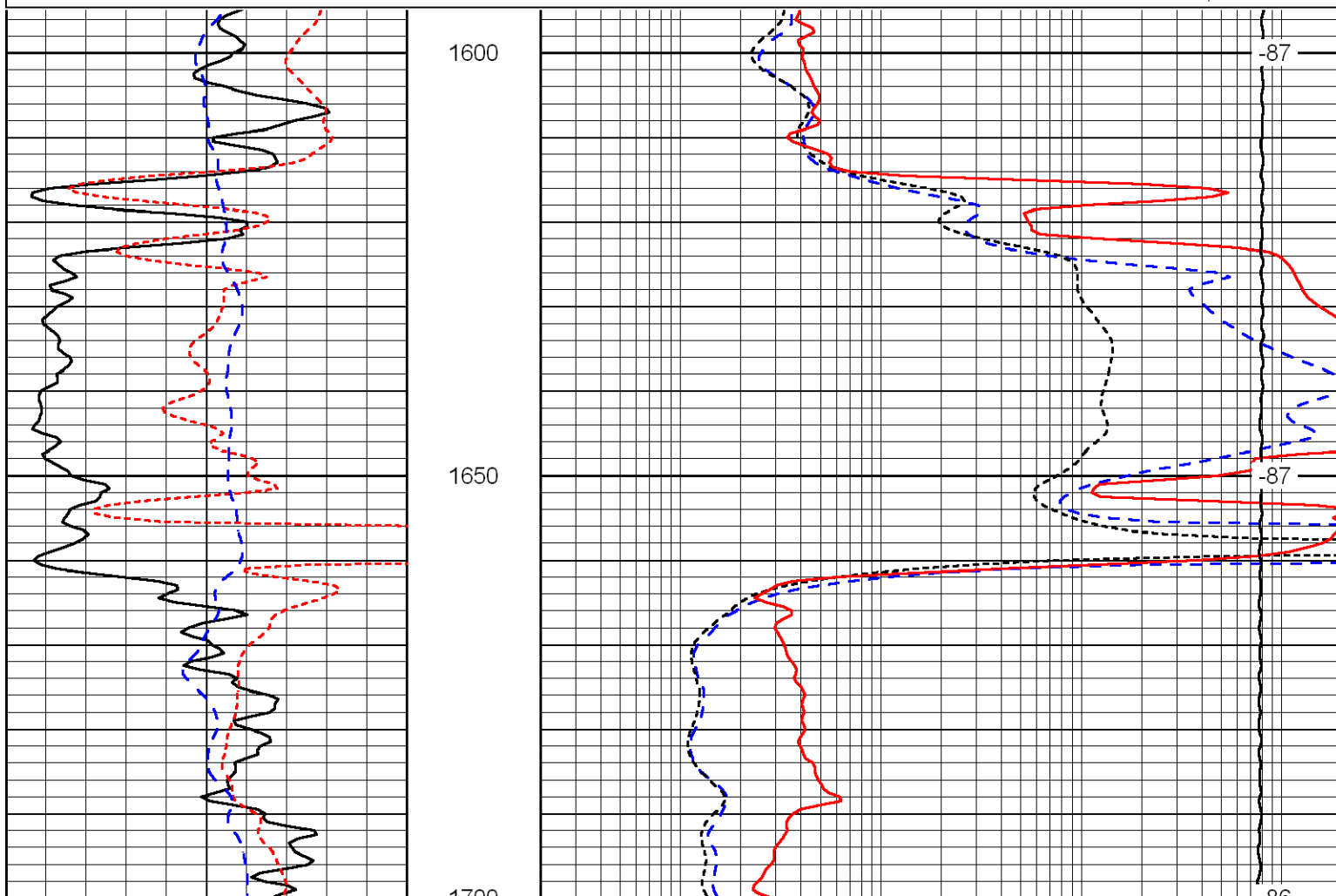
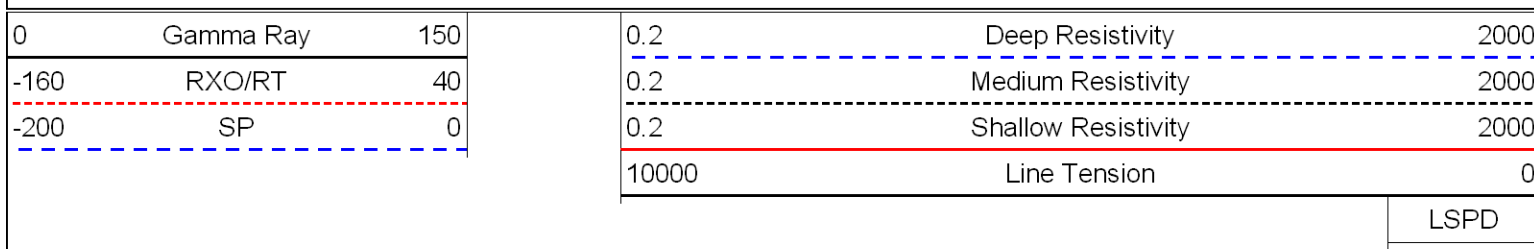


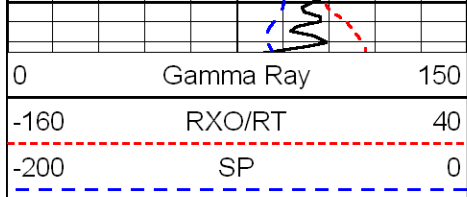




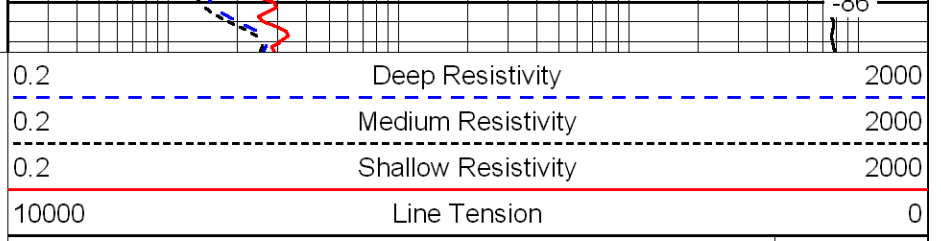


Database File: aw_092912hd.db
 Dataset Pathname: dil/awstack
 Presentation Format: dil
 Dataset Creation: Sun Sep 30 05:51:04 2012
 Charted by: Depth in Feet scaled 1:240



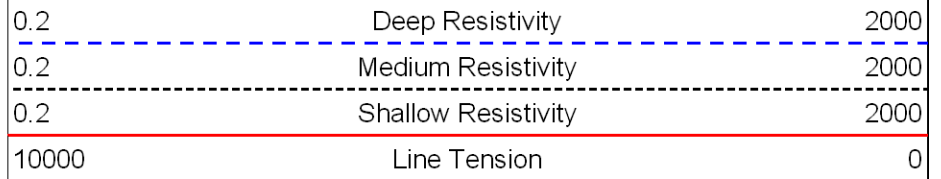
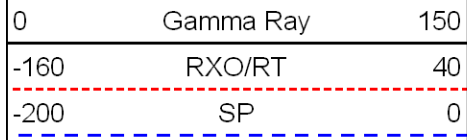


1700

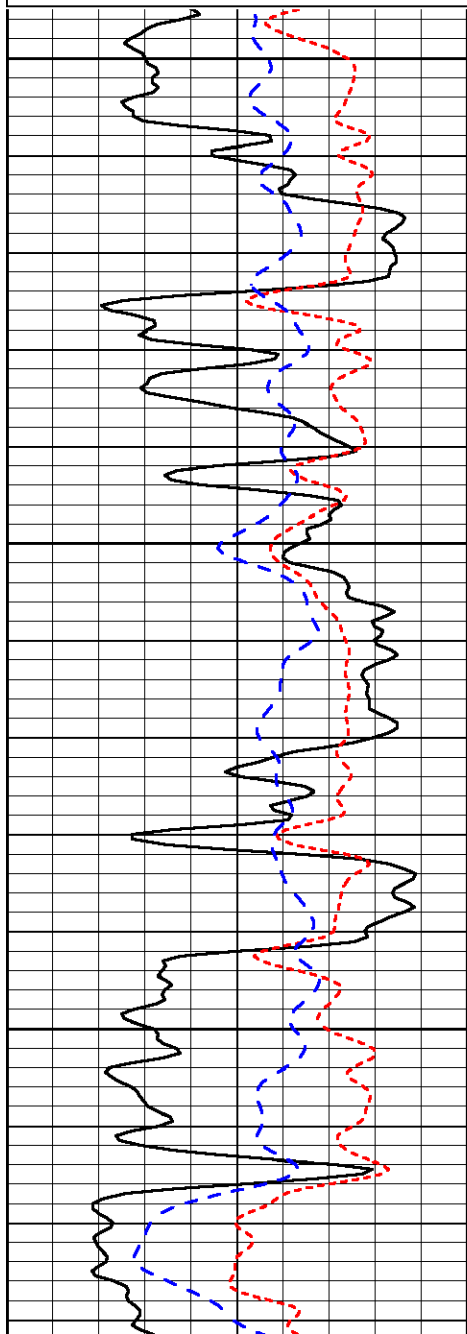


LSPD

Database File: aw_092912hd.db
 Dataset Pathname: dil/awstack
 Presentation Format: dil
 Dataset Creation: Sun Sep 30 05:51:04 2012
 Charted by: Depth in Feet scaled 1:240



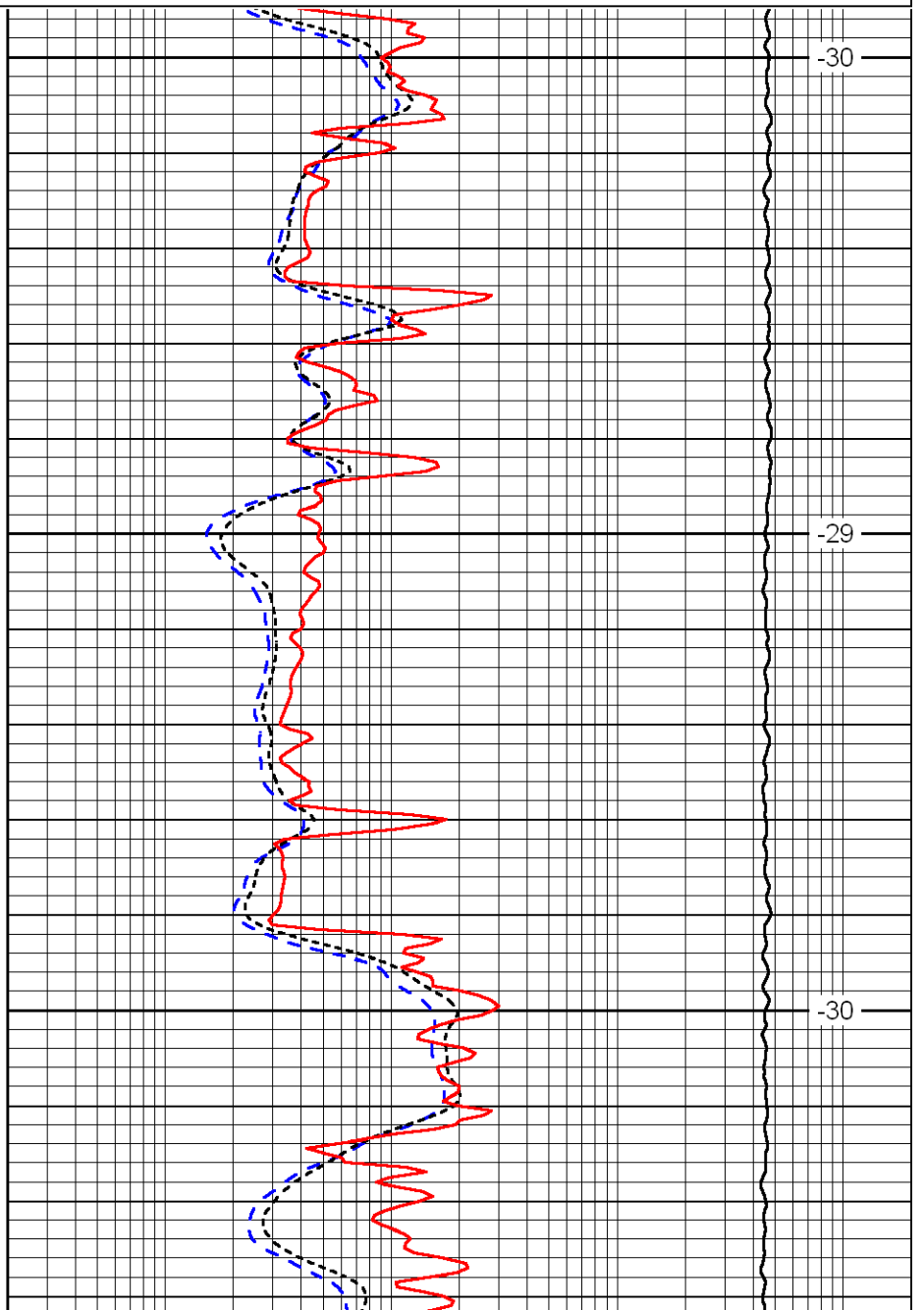
LSPD



3200

3250

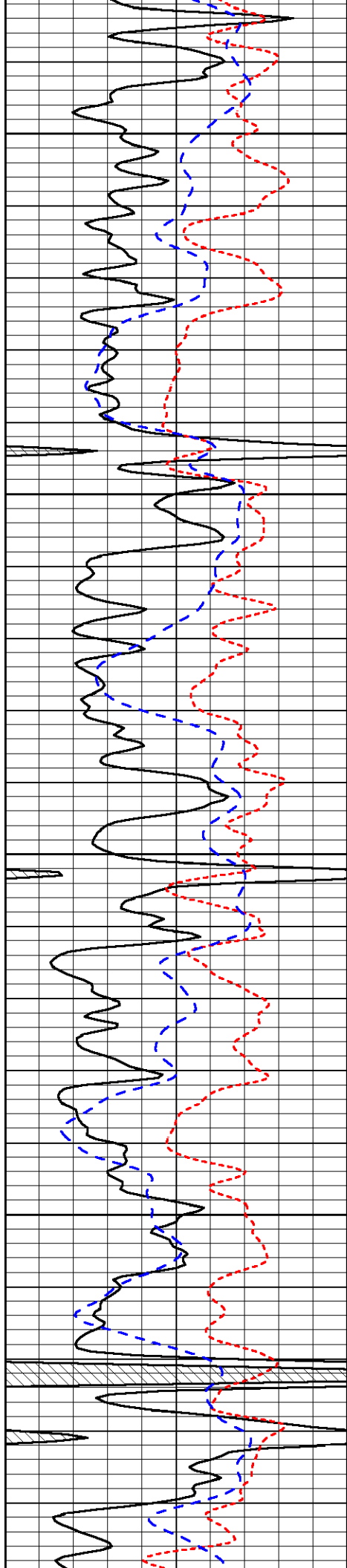
3300



-30

-29

-30



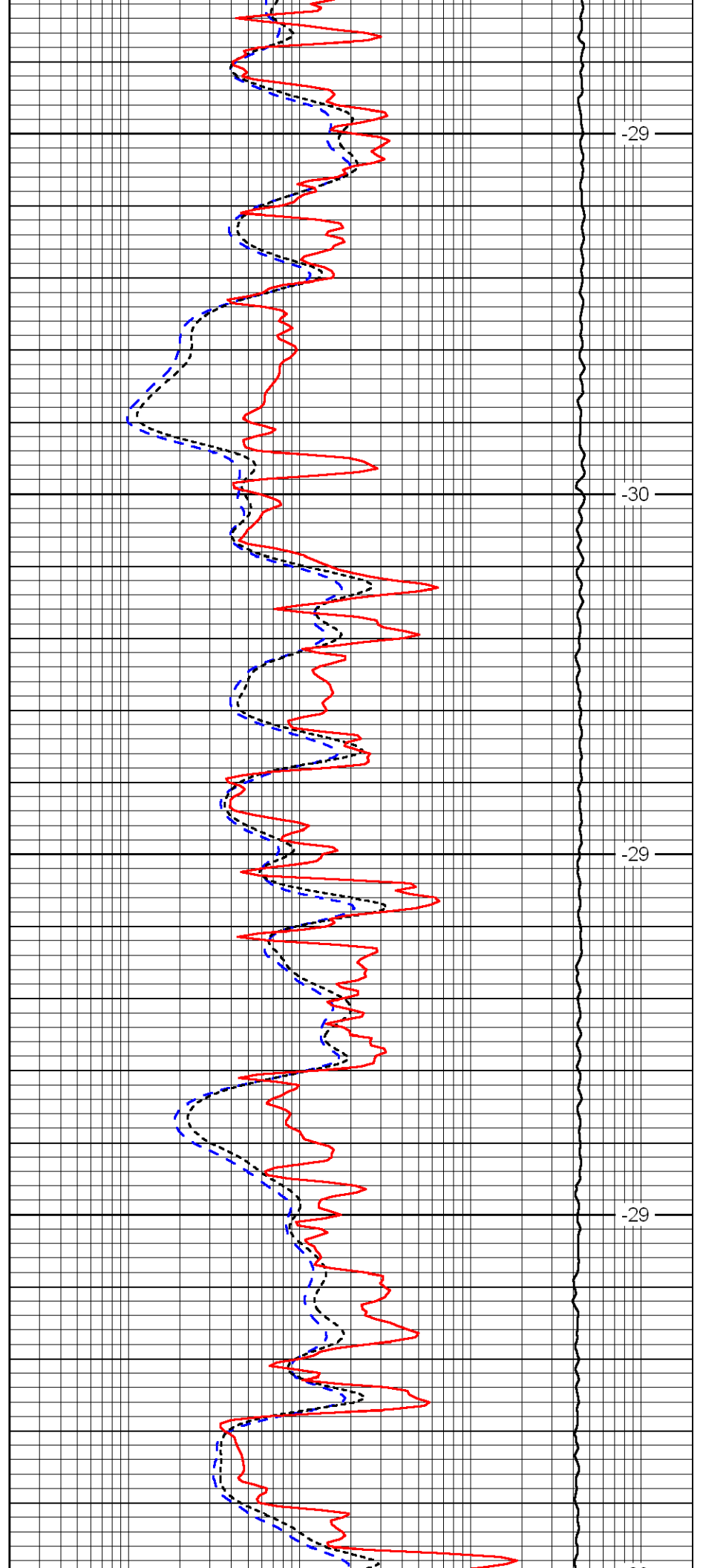
3350

3400

3450

3500

3550



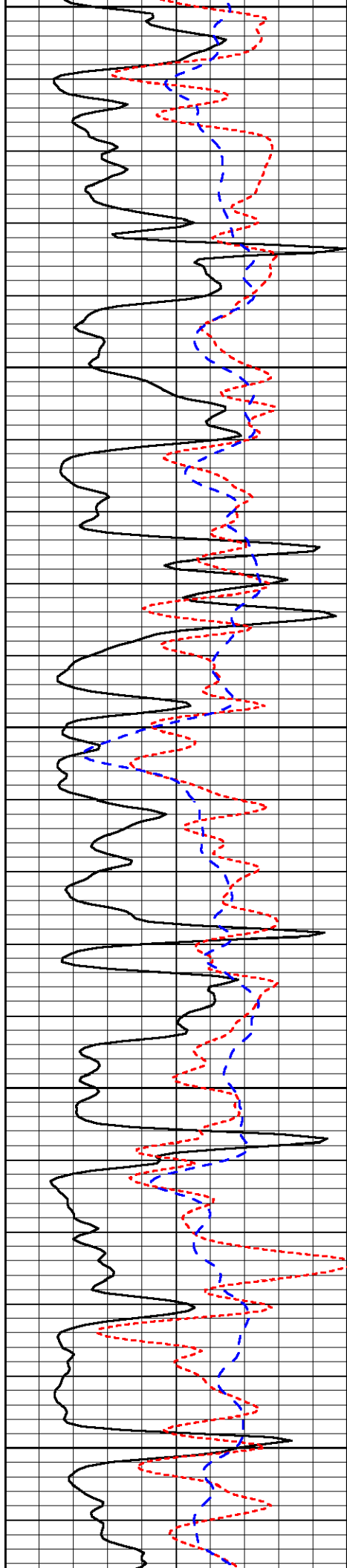
-29

-30

-29

-29

-30



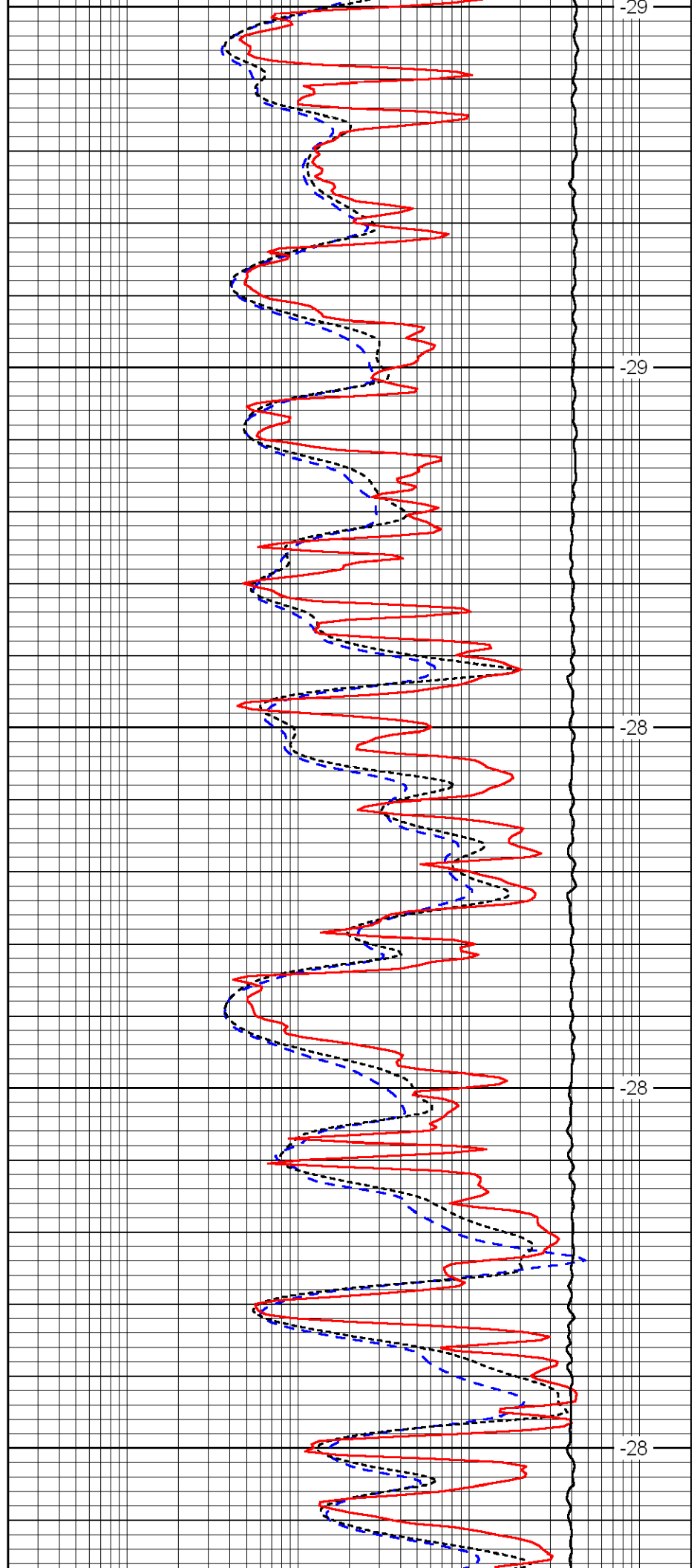
3550

3600

3650

3700

3750



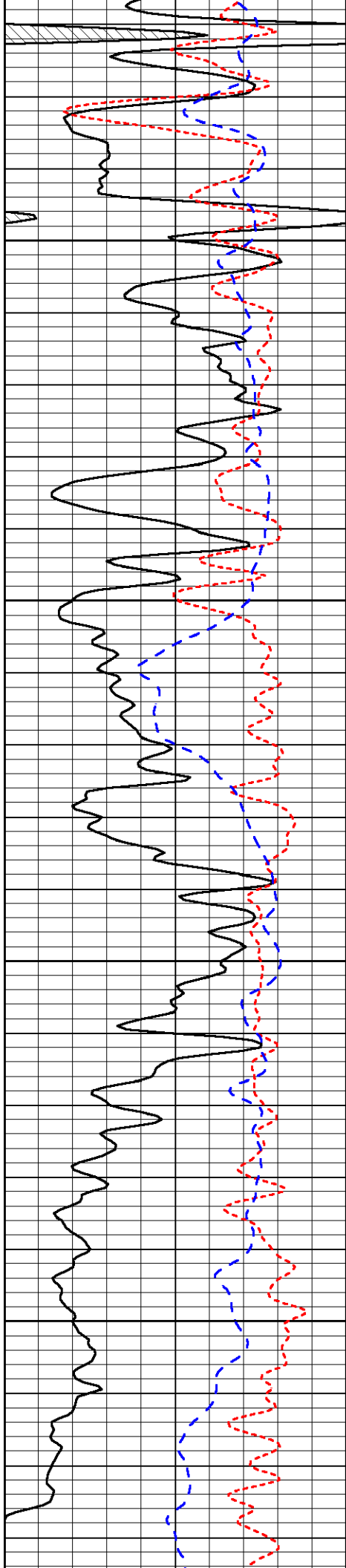
-29

-29

-28

-28

-28

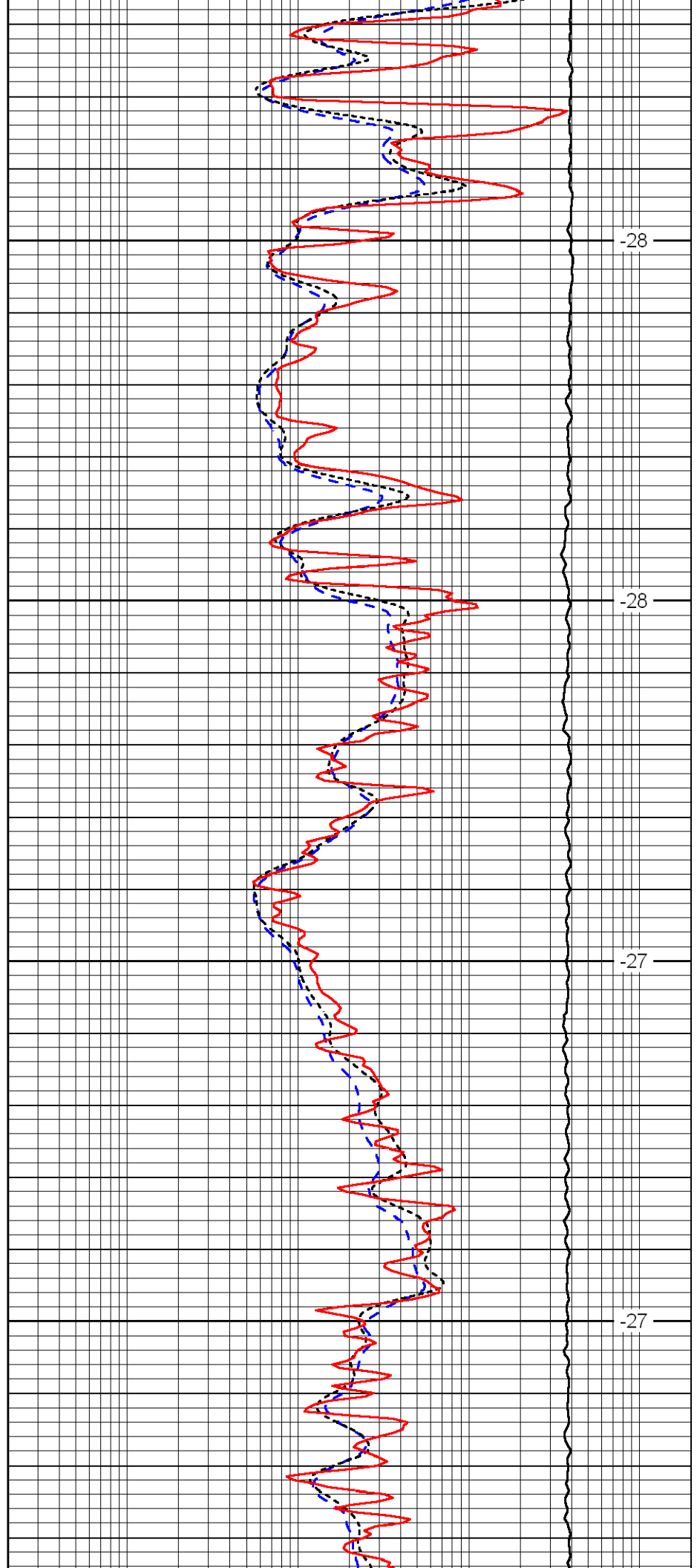


3800

3850

3900

3950

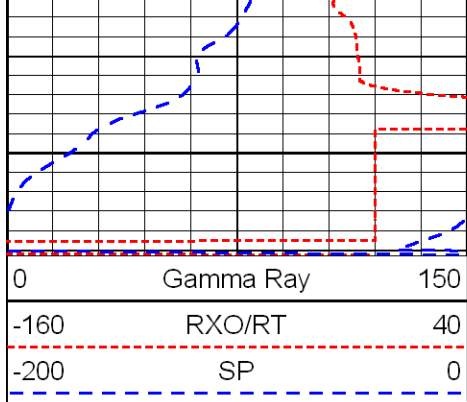


-28

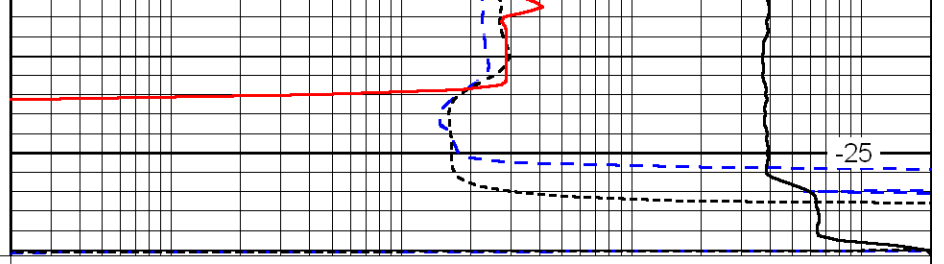
-28

-27

-27



4000



0.2	Deep Resistivity	2000
0.2	Medium Resistivity	2000
0.2	Shallow Resistivity	2000
10000	Line Tension	0

LSPD