

**GAMMA RAY
NEUTRON
OPEN HOLE**

Company **N & W ENTERPRISES, INC.**

Well **OPLOTNIK #6**

Field **WALNUT SE**

County **CRAWFORD**

State **KANSAS**

Location: **SEC 29 TWP 28S RGE 22E**

API #: **15-037-22227-00-00**

Other Services

Permanent Datum **GL** Elevation **961EST**

Log Measured From **GL**

Drilling Measured From **GL**

Date **4-9-13**

Run Number **1 NW**

Depth Diller **4-19-13**

Depth Logger **440.2**

Top Log Interval **0**

Bottom Logged Interval **440.2**

Fluid Level **FULL**

Type Fluid **WATER**

Production Casing **7" @ 20'**

Max. Recorded Temp. **2 7/8" @ TD**

Estimated Cement Top
Calculated Cement Top
Amount & Type Cement
Amount & Type Admix
Drilling Contractor
Equipment Number
Location
Recorded By
Witnessed By

<<< Fold Here >>>

All interpretations are opinions based on inferences from electrical or other measurements and we cannot and do not guarantee the accuracy or correctness of any interpretation, and we shall not, except in the case of gross or willful negligence on our part, be liable or responsible for any loss, costs, damages, or expenses incurred or sustained by anyone resulting from any interpretation made by any of our officers, agents or employees. These interpretations are also subject to our general terms and conditions set out in our current Price Schedule.

Comments

THANK YOU

Sensor	Offset (ft)	Schematic	Description	Len (ft)	OD (in)	Wt (lb)
GR	7.59		GR-TITAN_169 (TIT169_001) Titan 1 11/16" Gamma Ray	4.75	1.69	20.00
CCL	5.05		CCL-TITAN_169 (TIT169) Titan 1 11/16" Logging CCL	1.83	1.69	7.50
NEU	0.63		NEU-TITAN (TIT801) TITAN 1 11/16" Neutron	4.33	1.69	25.00

Dataset: oplotnik #6.db: field/well/run1/pass2

Total Length: 10.92 ft

Total Weight: 52.50 lb

O.D.: 1.69 in

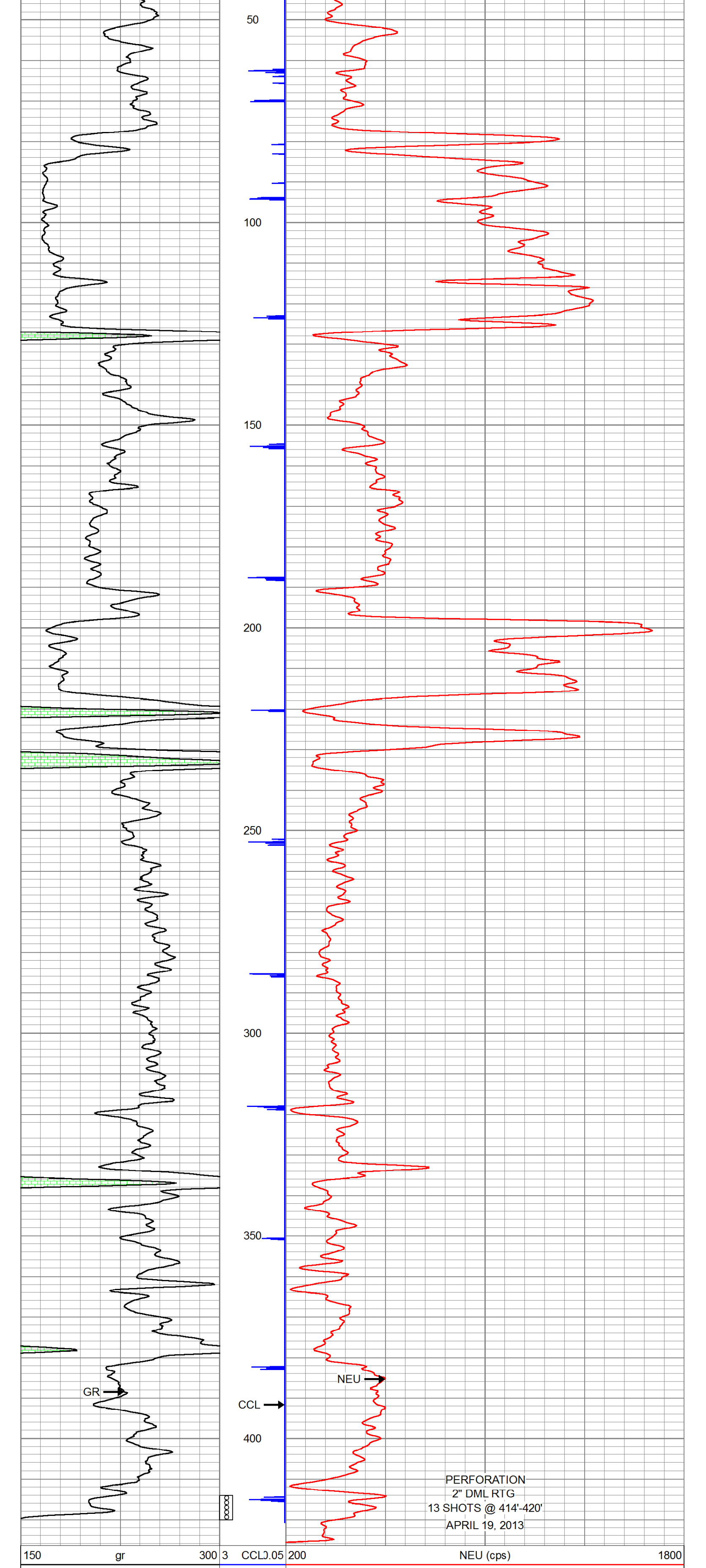
Database File: e:\oplotnik #6.db

Dataset Pathname: pass2

Presentation Format: gr-n-ccl

Dataset Creation: Fri Apr 19 15:04:25 2013 by Log Std Casedhole 09061

Charted by: Depth in Feet scaled 1:240



PERFORATION
2" DML RTG
13 SHOTS @ 414'-420'
APRIL 19, 2013

150 gr 300 3 CCL0.05 200 NEU (cps) 1800

0 GR 150

150 gr 300 3 CCL0.05 200 NEU (cps) 1800

0 GR 150

Company N & W ENTERPRISES, INC.
Well OPLOTNIK #6
Field WALNUT SE
County CRAWFORD SEC. 29 TWP. 28S RGE. 22E
State KANSAS Date 4-9-13

