



Pioneer Energy Services

Sonic Cement  
Bond Log

15-063-22036-00-00

Company Lario Oil & Gas Company  
Well Stevenson Trust No. 1-4  
Field Logo Southeast  
County Gove State Kansas

Location

2310' FSL & 2970' FWL

Sec: 4 Twp: 13S Rge: 31W

Other Services

Perforate

Permanent Datum Ground Level Elevation 2911  
Log Measured From Kelly Bushing 5 Ft. Above Perm. Datum  
Drilling Measured From Kelly Bushing

K.B. 2916  
D.F. 2914  
G.L. 2911

Run Number	One	
Date Survey	10/4/2012	
Date Cementing	9/5/2012	
Type Cementing Operation	Primary	
Depth Driller	4700	
Depth Logger	4626	
Logged Interval	4624 to 2900	to
Casing Driller	5.5 @ T.D.	@
Float Collar -- D.V. Tool		2118
Squeeze Depth		
Amount & Type Cement		
Amount & Type Admix		
Type Fluid In Hole	Water	
Fluid Level	490	
Salinity PPM CL		
Weight lb/gal -- Vis.		
Approx. Logged Cement Top	3100	
Calculated Cement Top		
Max. Hole Temperature	122	
Tool No.	D-1	
Spacing Recorded	3-5	
Equipment -- Location	72 Hays	
Recorded By	K. Ladrigan	
Witnessed By	Mike Ketterling	Larry Karlin

<<< Fold Here >>>

All interpretations are opinions based on inferences from electrical or other measurements and we cannot and do not guarantee the accuracy or correctness of any interpretation, and we shall not, except in the case of gross or willful negligence on our part, be liable or responsible for any loss, costs, damages, or expenses incurred or sustained by anyone resulting from any interpretation made by any of our officers, agents or employees. These interpretations are also subject to our general terms and conditions set out in our current Price Schedule.

Comments

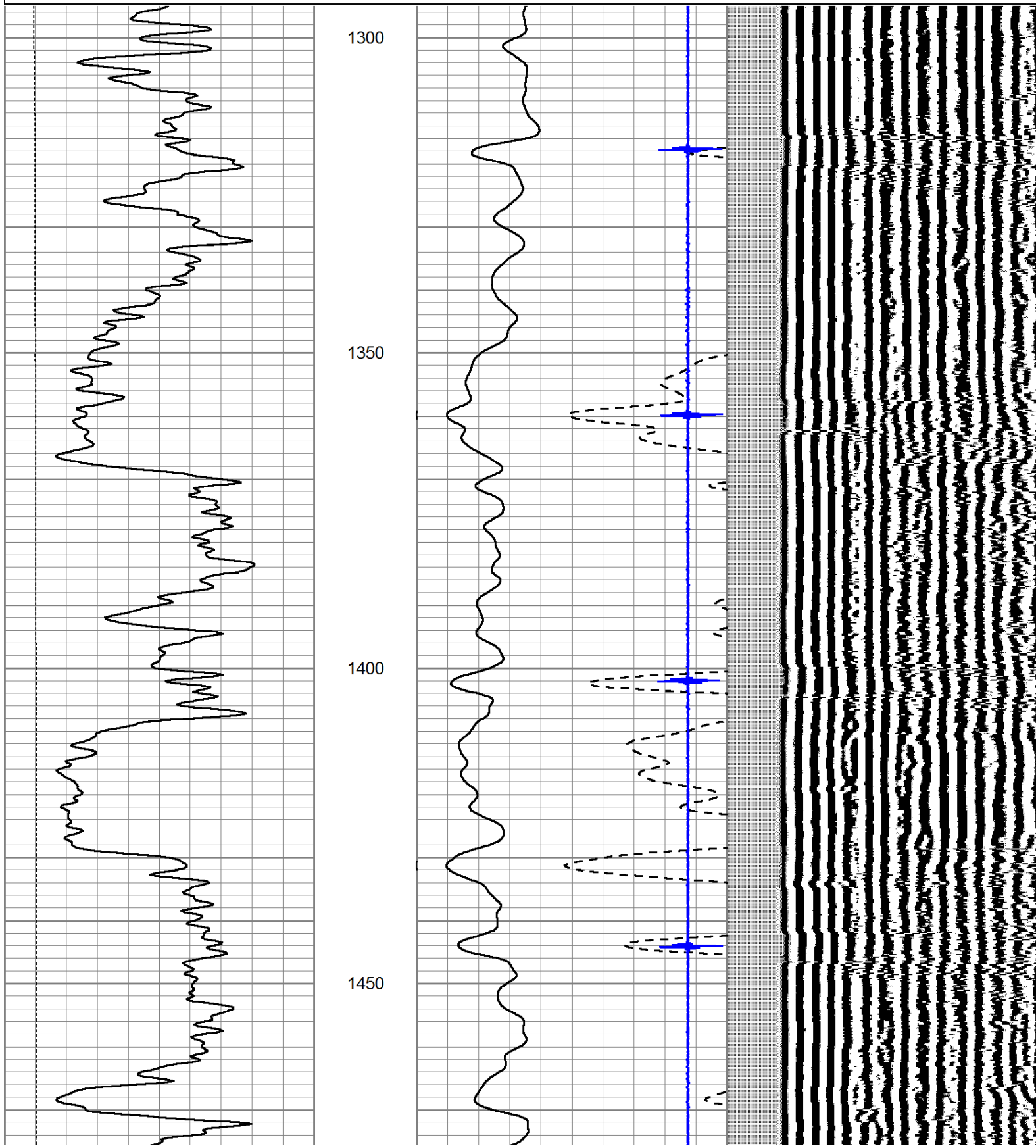
Thank you for using Pioneer Energy Services, Inc. 785.625.3858  
Oakley, KS., South on HWY 83 to Seneca Road (Gove Road)  
5 East to 16 Road, 1/2 South  
West Into.

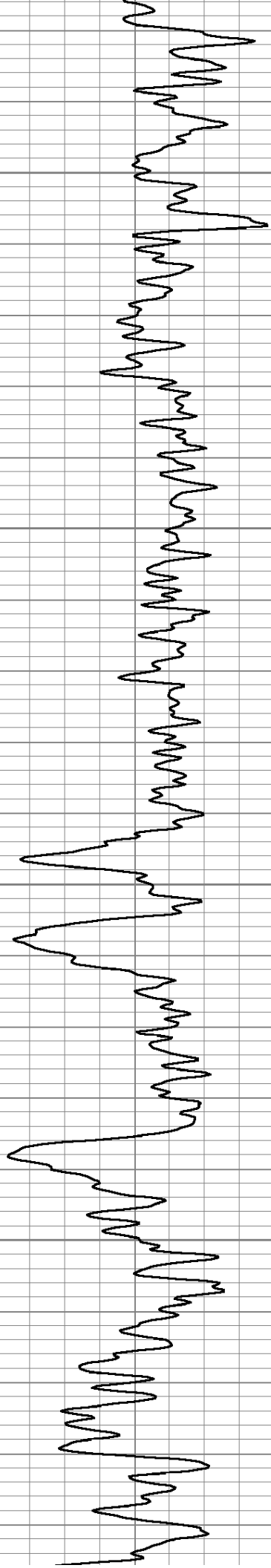


D.V. Tool @ 2118

Database File: lario-stevensontrust1-4.db  
 Dataset Pathname: Stevenson/grcbl/pass5  
 Presentation Format: cldig  
 Dataset Creation: Thu Oct 04 14:50:03 2012 by Log SCH 111116  
 Charted by: Depth in Feet scaled 1:240

0	GR (GAPI)	150	AMP3	0	Amplitude (mV)	100	200	Variable Density	1200
0	LTEN (lb)	5000	(mV)	0	Amplified Amplitude (mV)	20			
			-100 10	7	Collar Locator	-1			



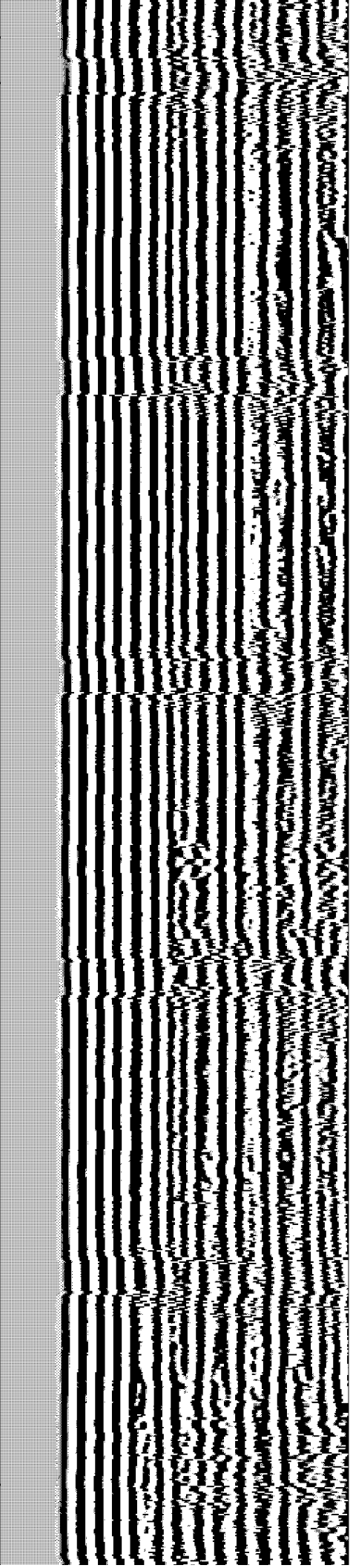
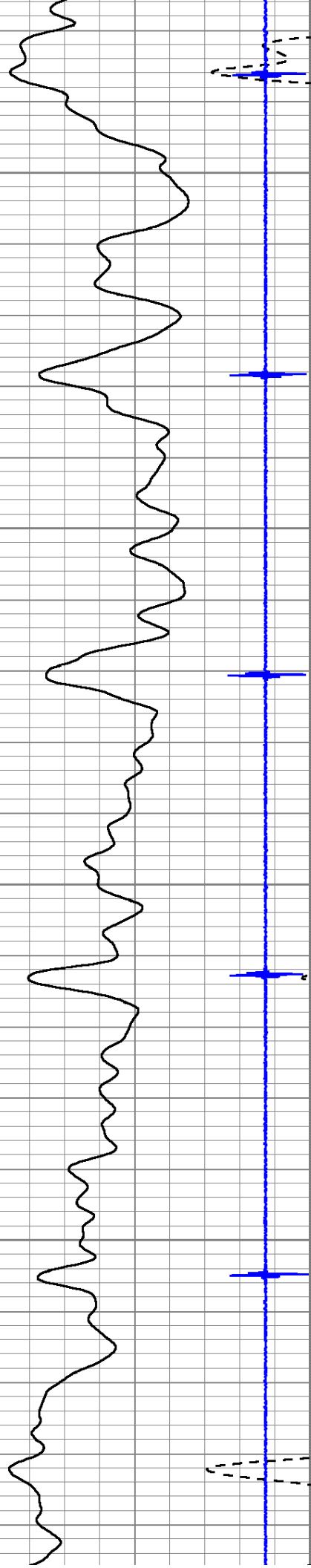


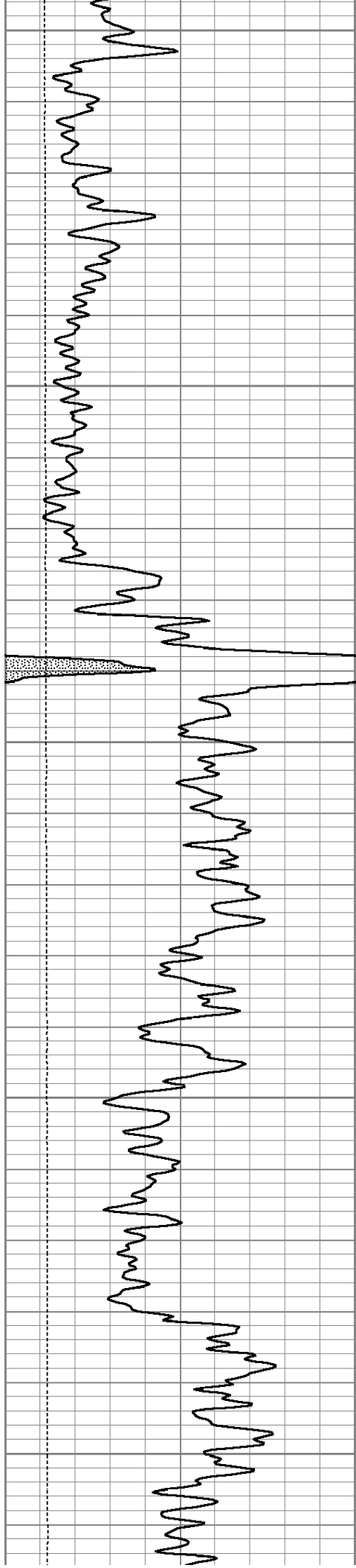
1500

1550

1600

1650





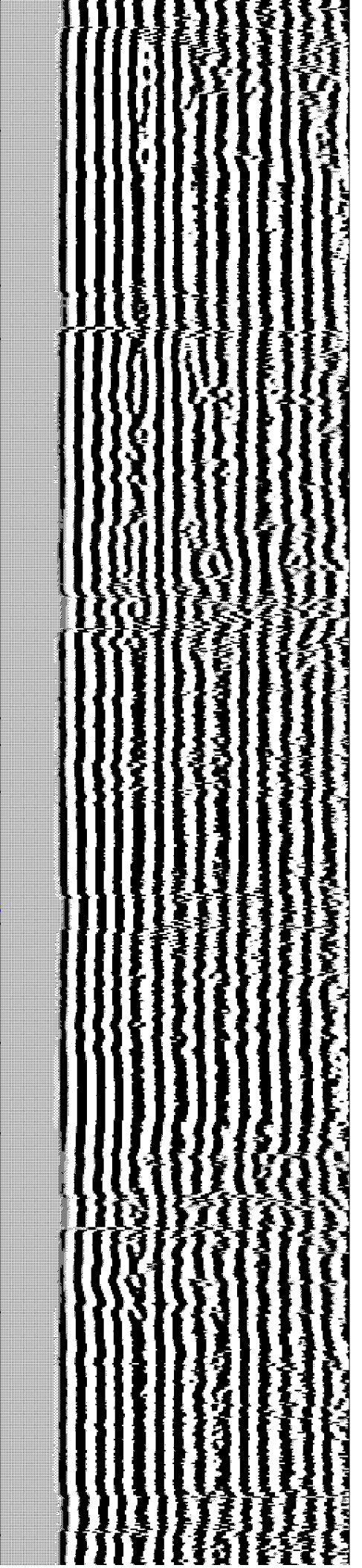
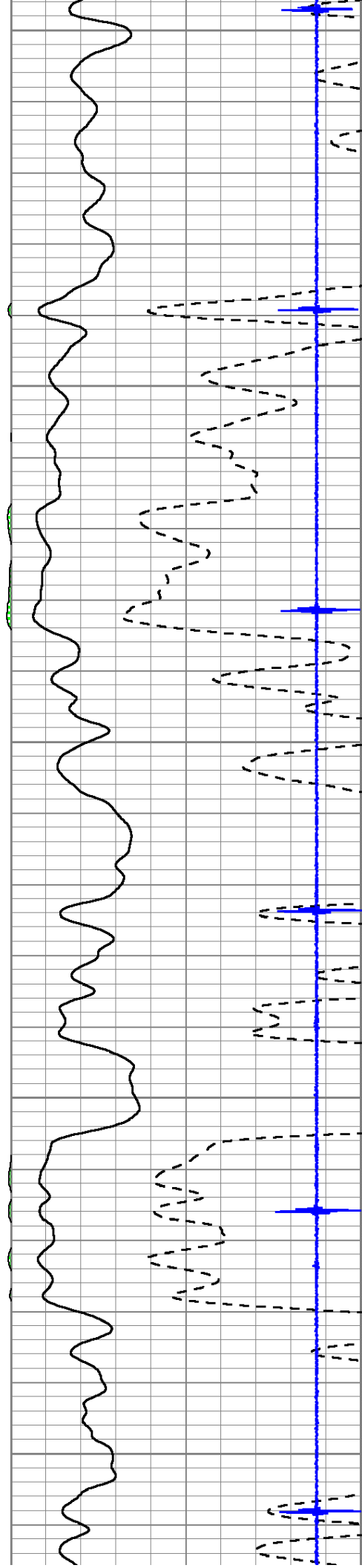
1700

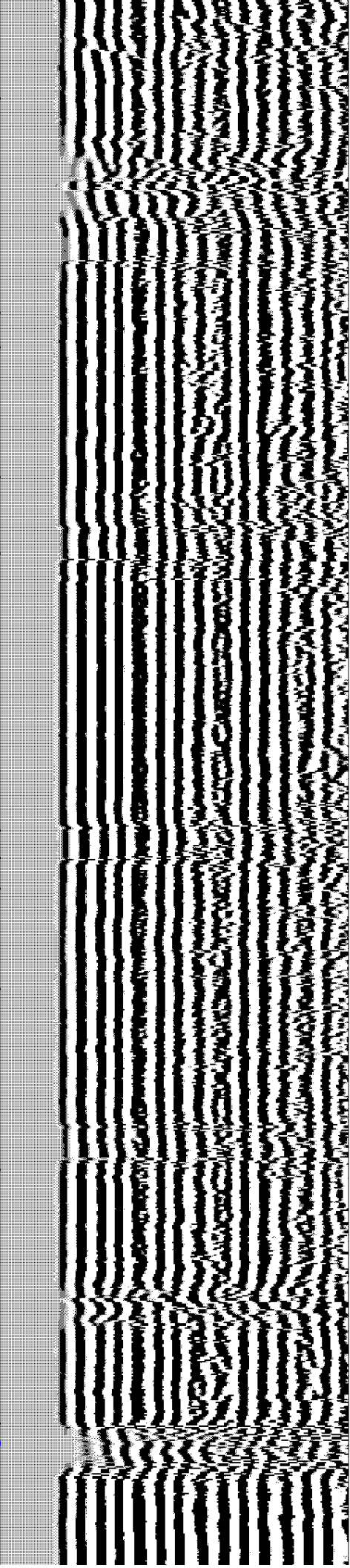
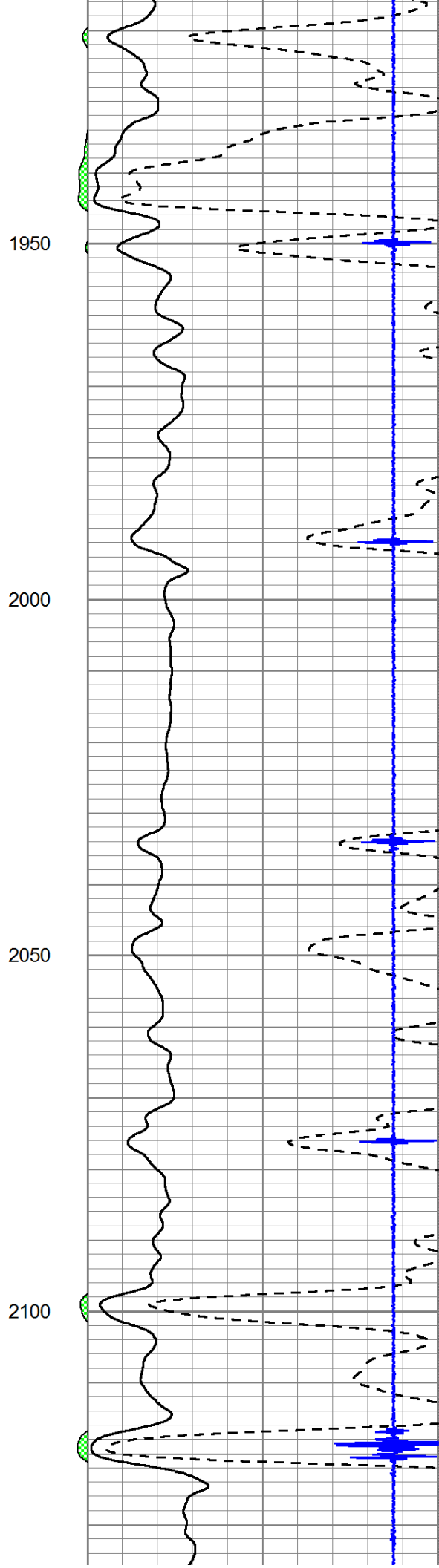
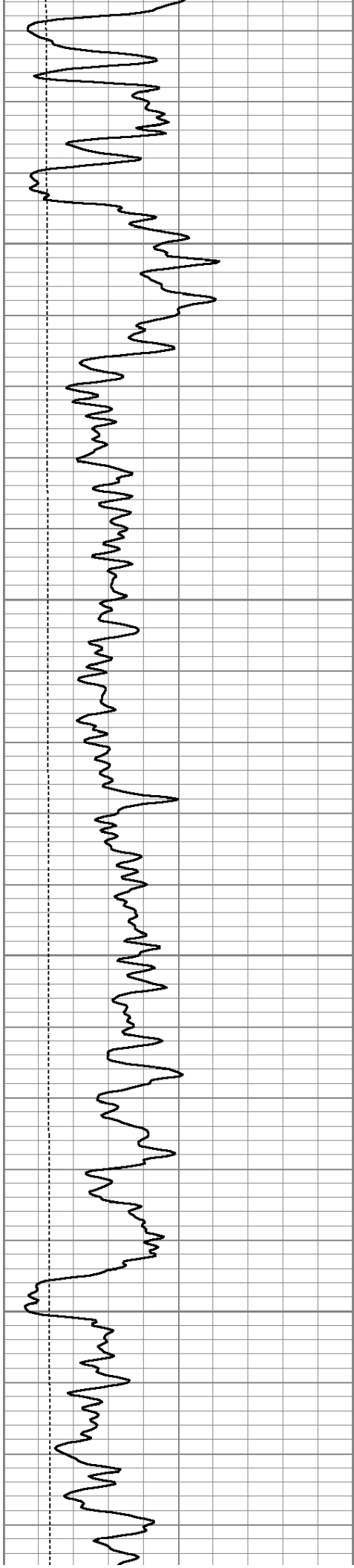
1750

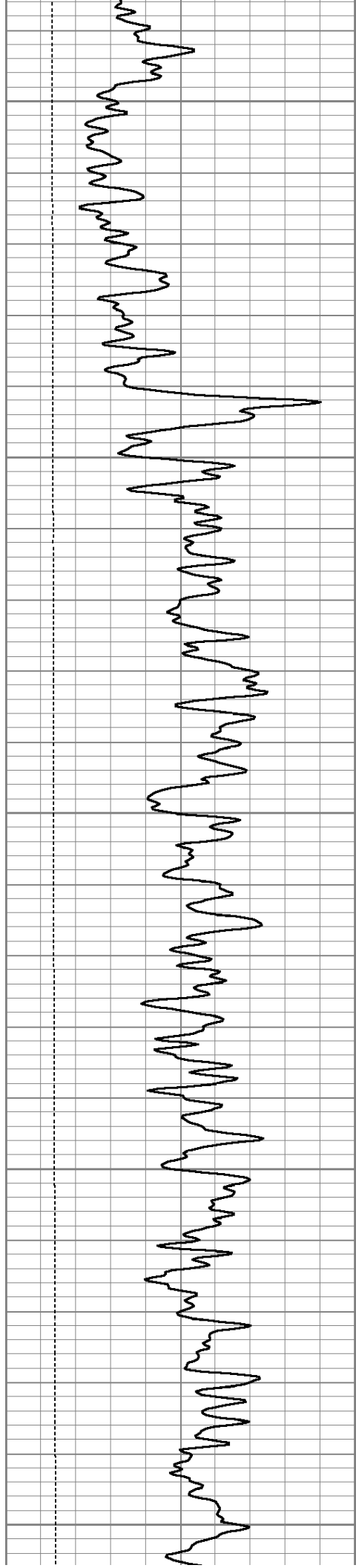
1800

1850

1900







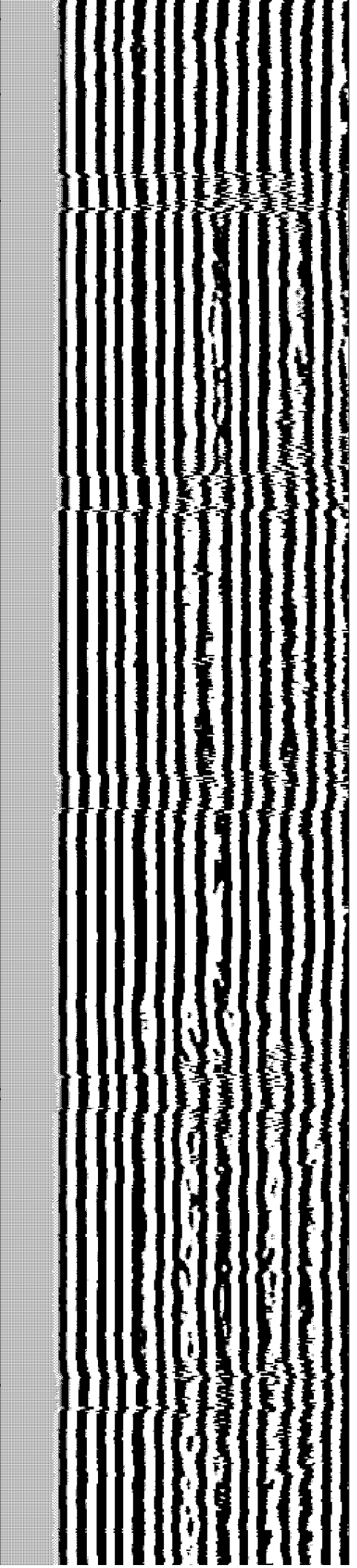
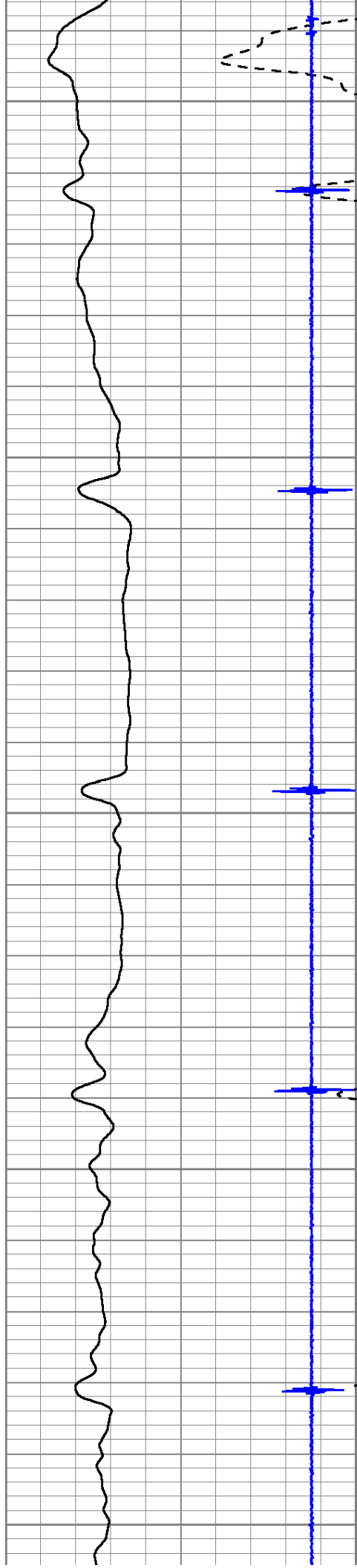
2150

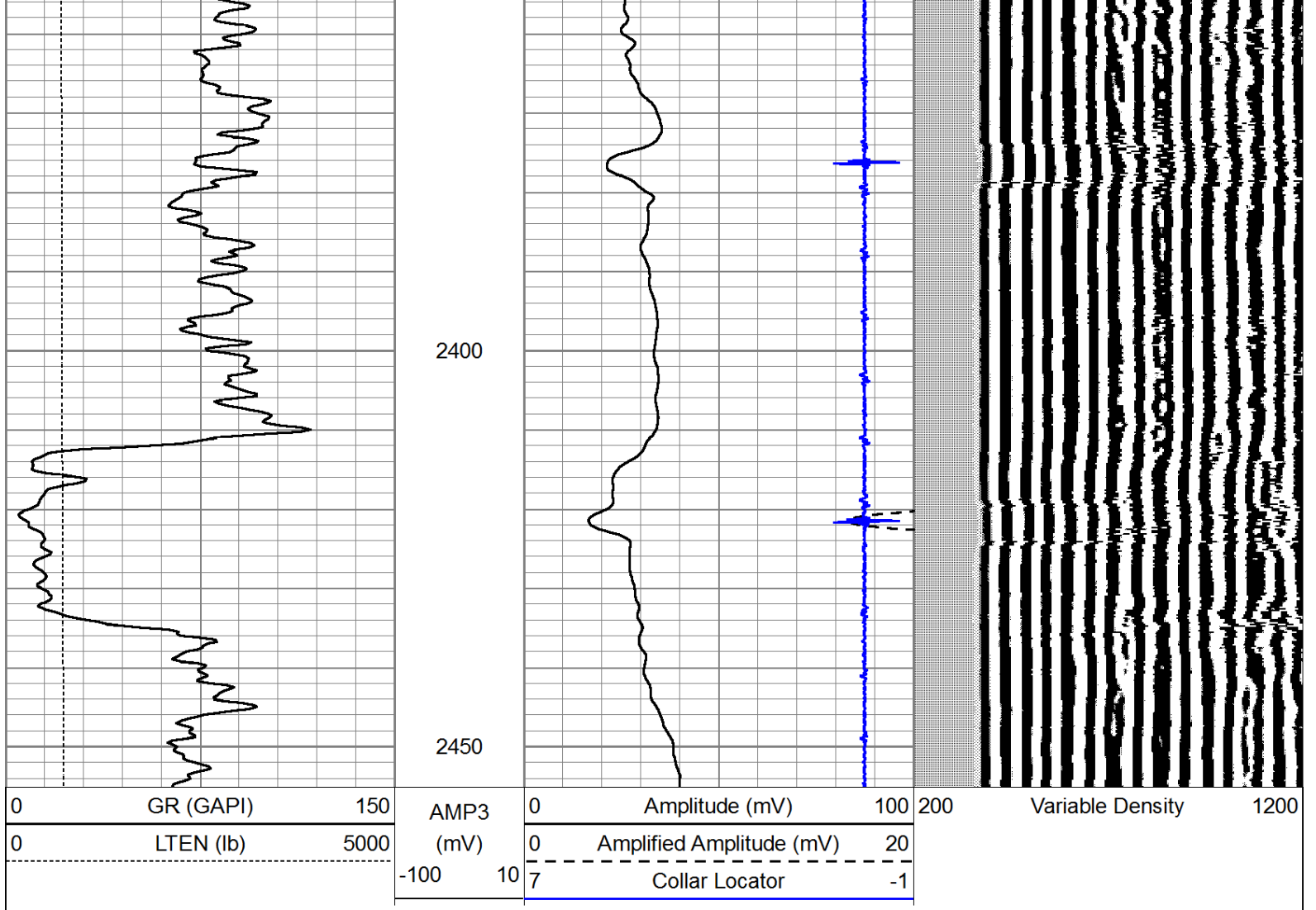
2200

2250

2300

2350

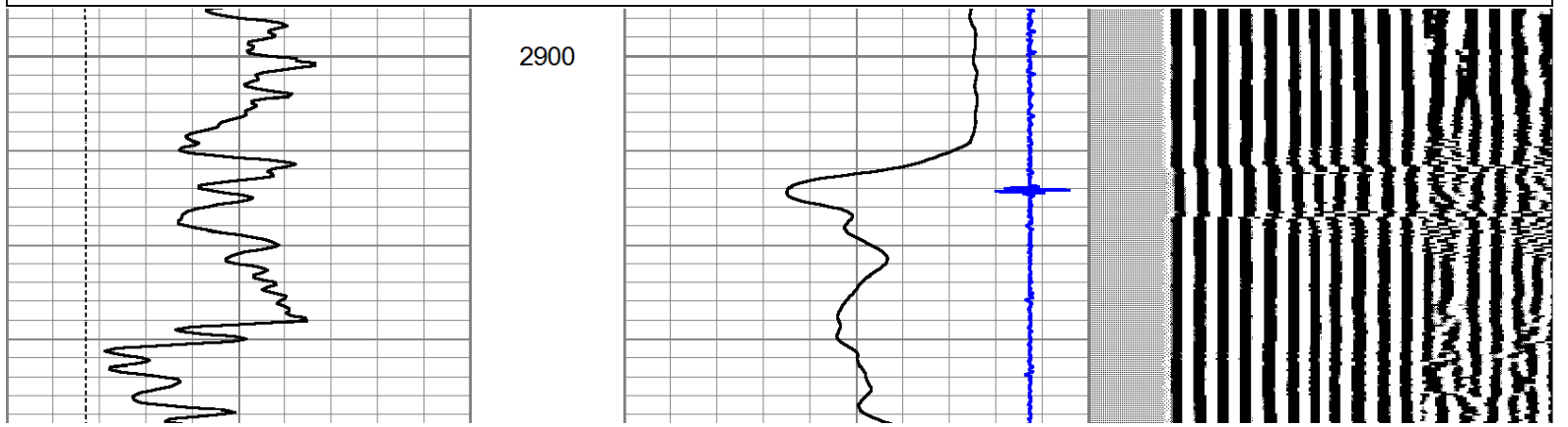
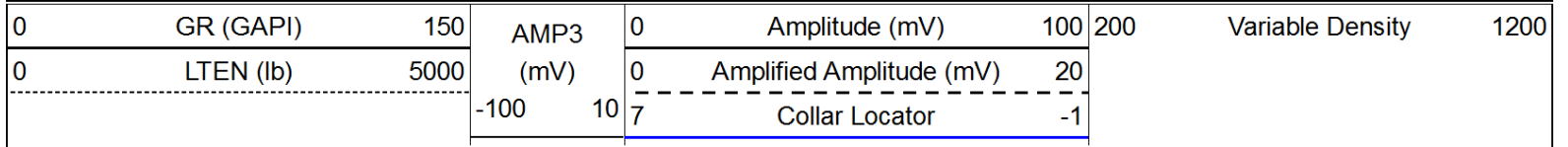


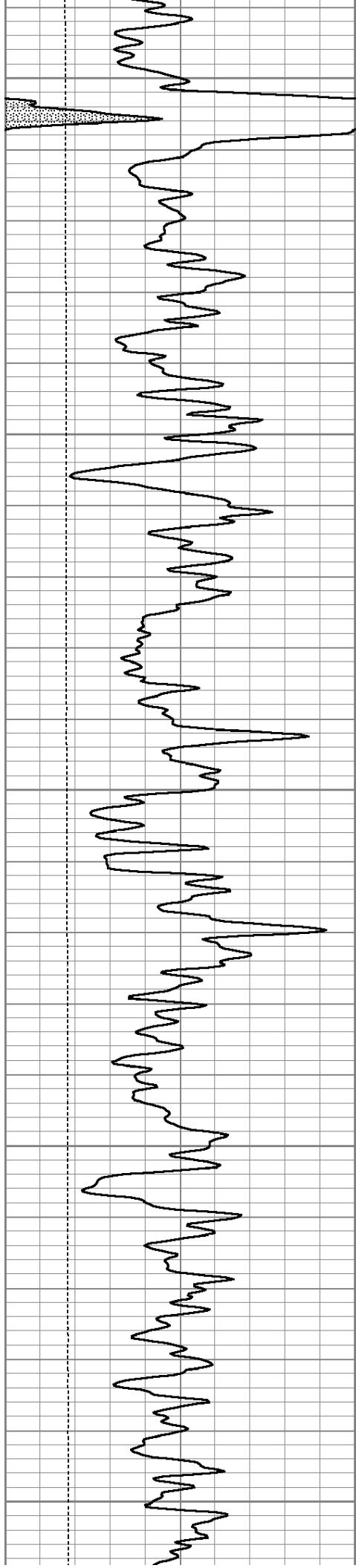


# Main Pass

Pioneer Energy Services

Database File: lario-stevensontrust1-4.db  
 Dataset Pathname: Stevenson/grcbl/pass4.2  
 Presentation Format: cldig  
 Dataset Creation: Thu Oct 04 14:55:32 2012  
 Charted by: Depth in Feet scaled 1:240





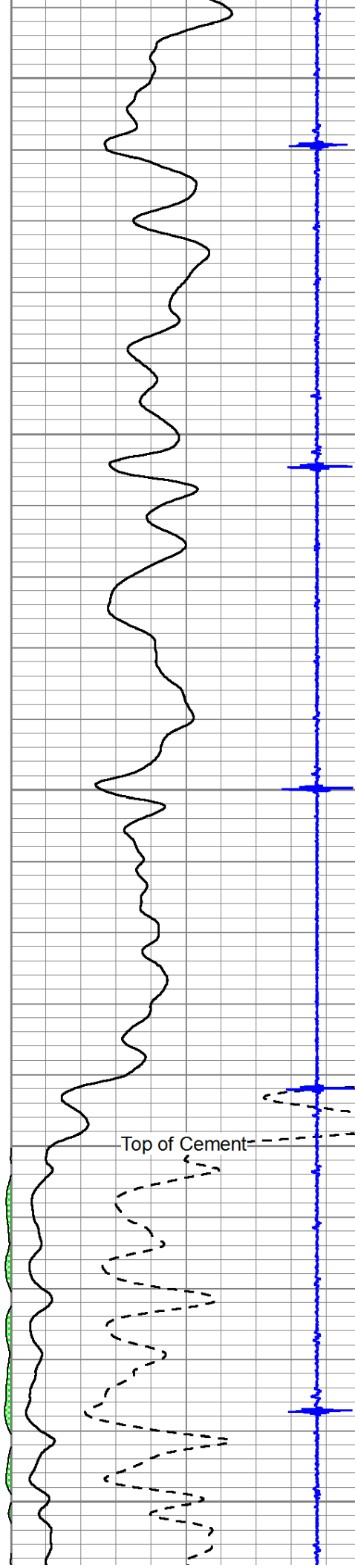
2950

3000

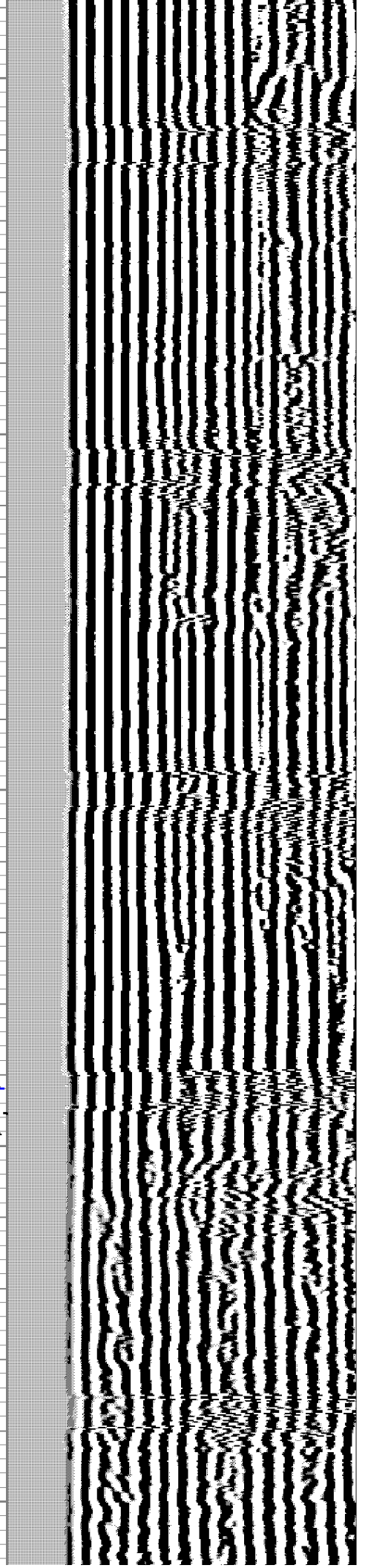
3050

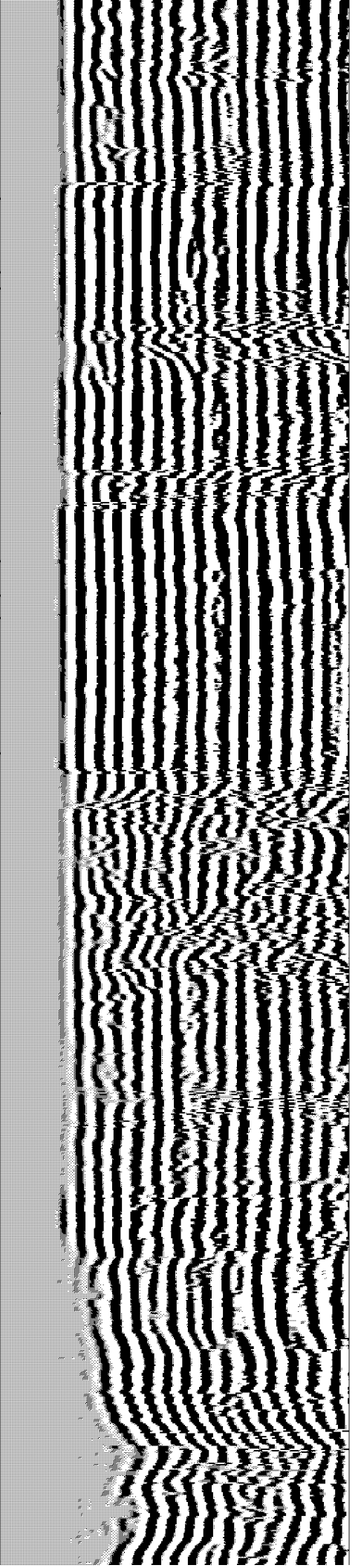
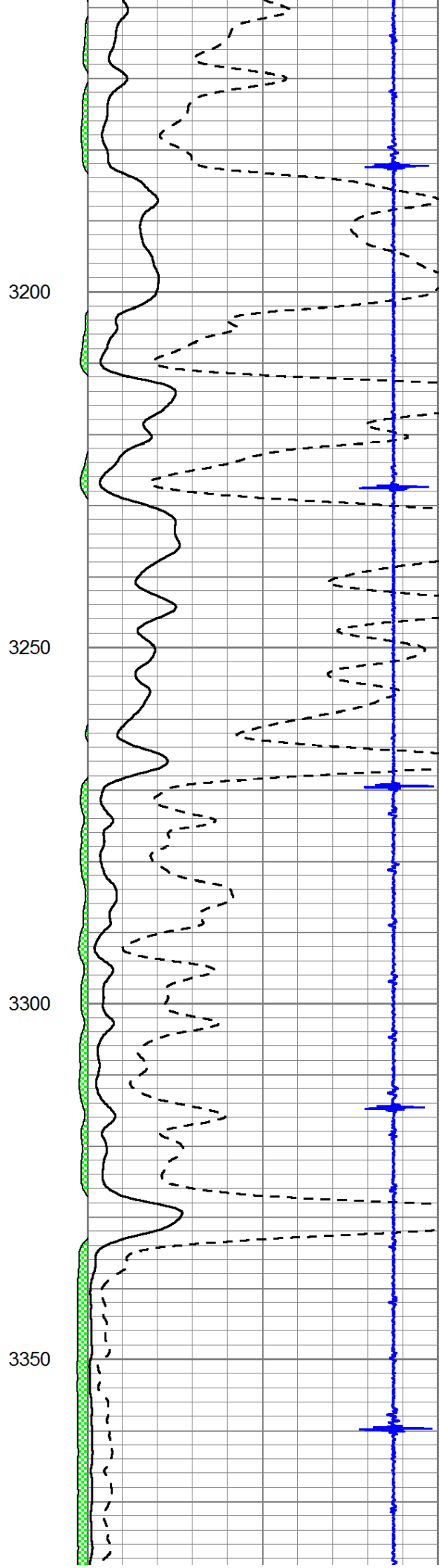
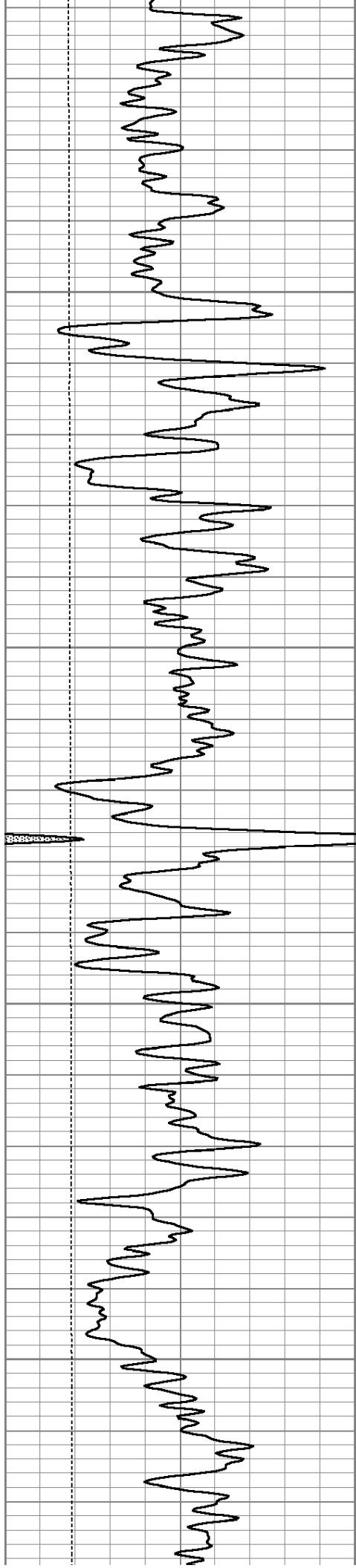
3100

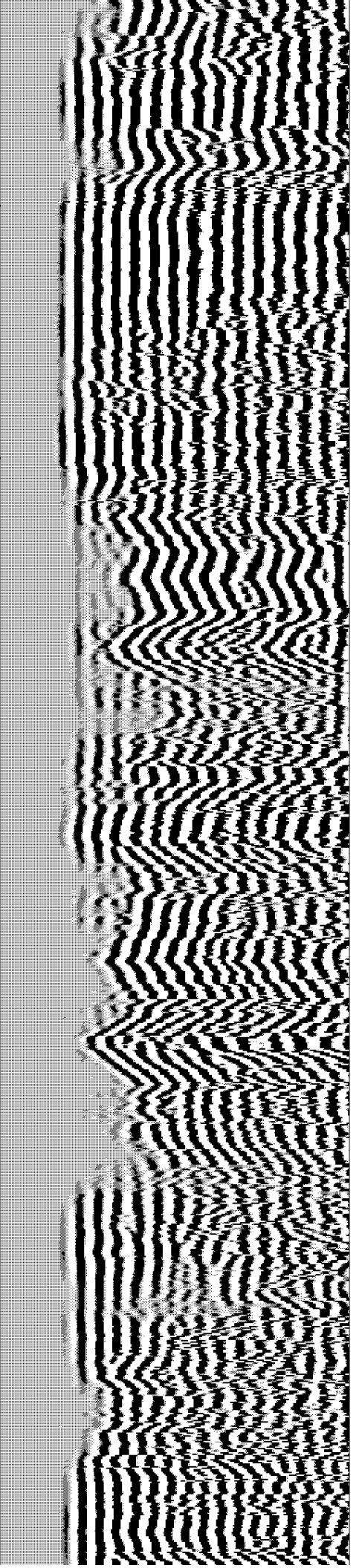
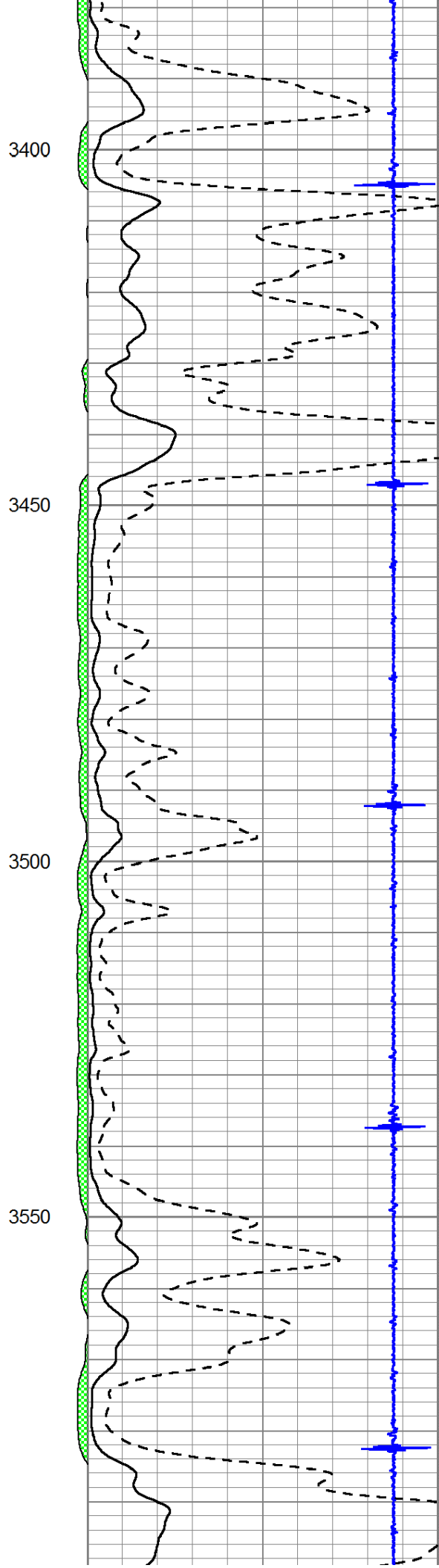
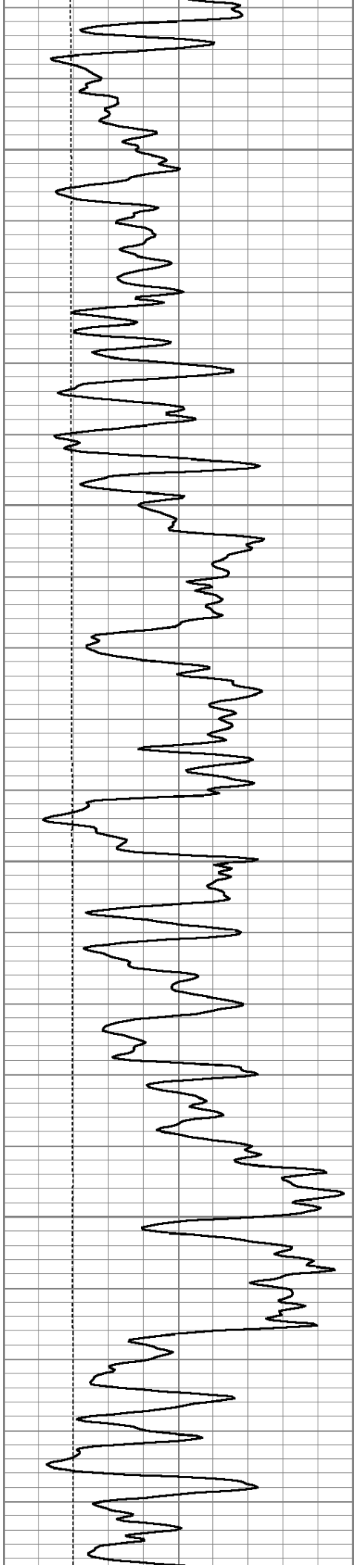
3150

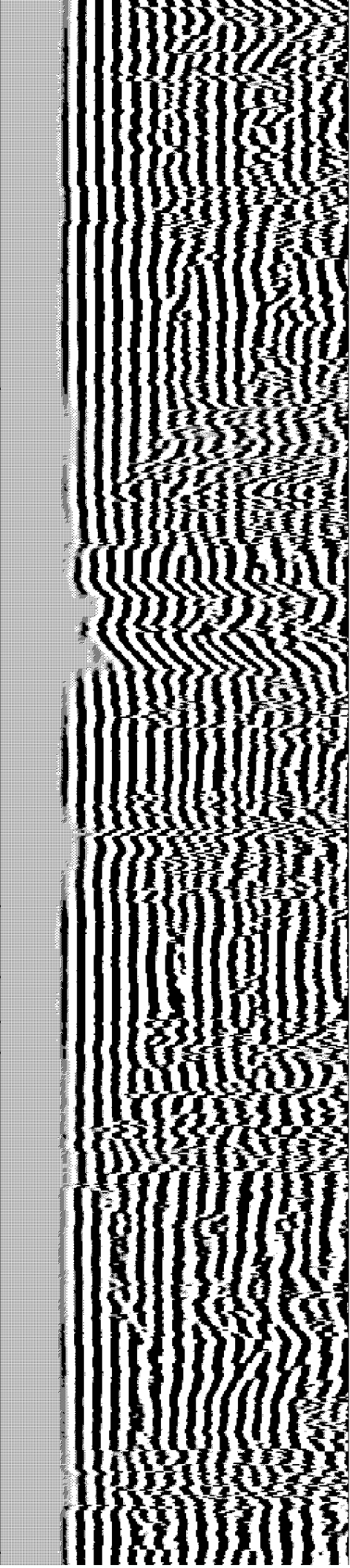
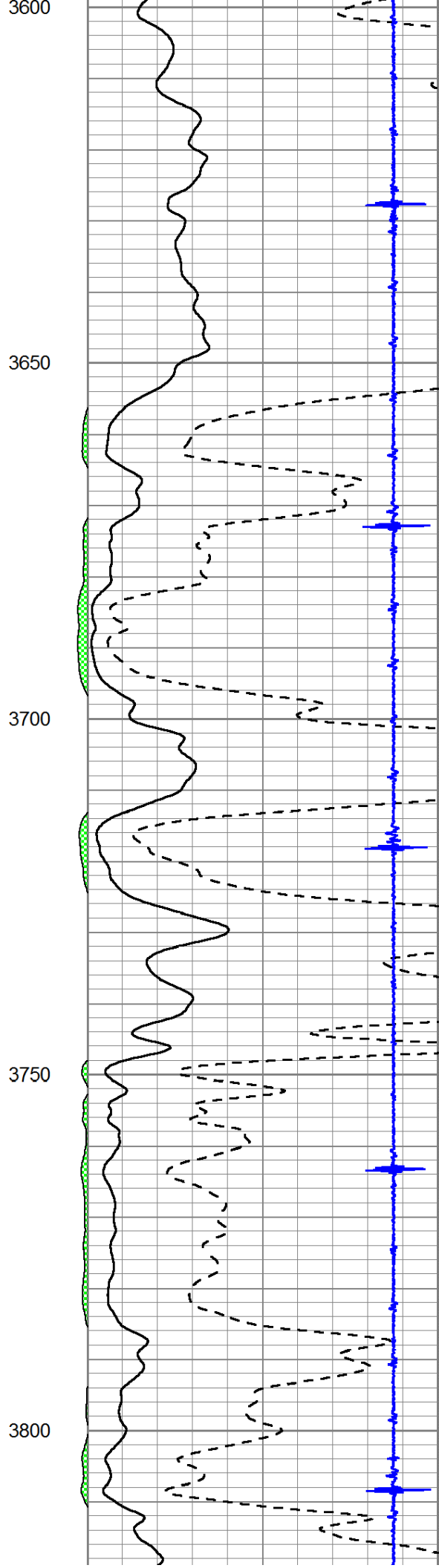
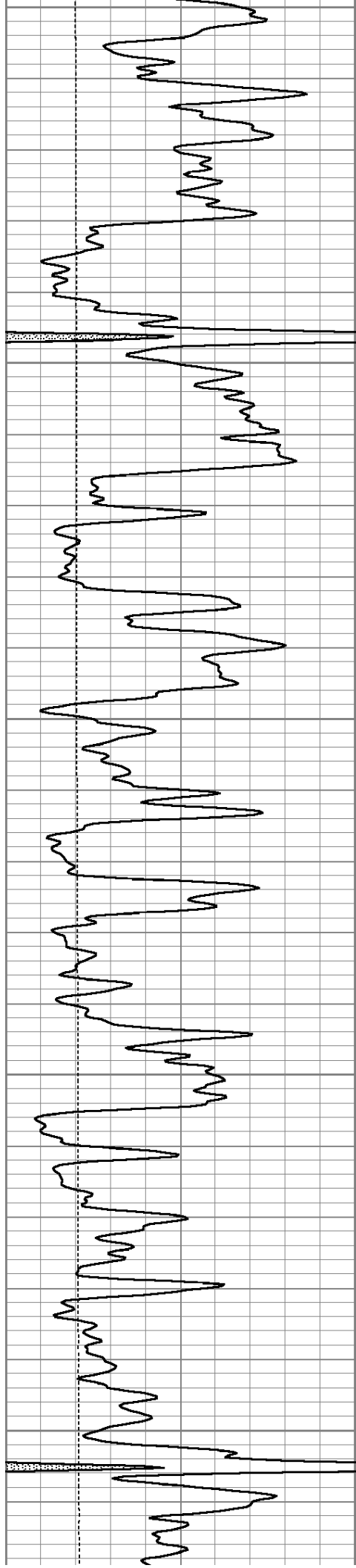


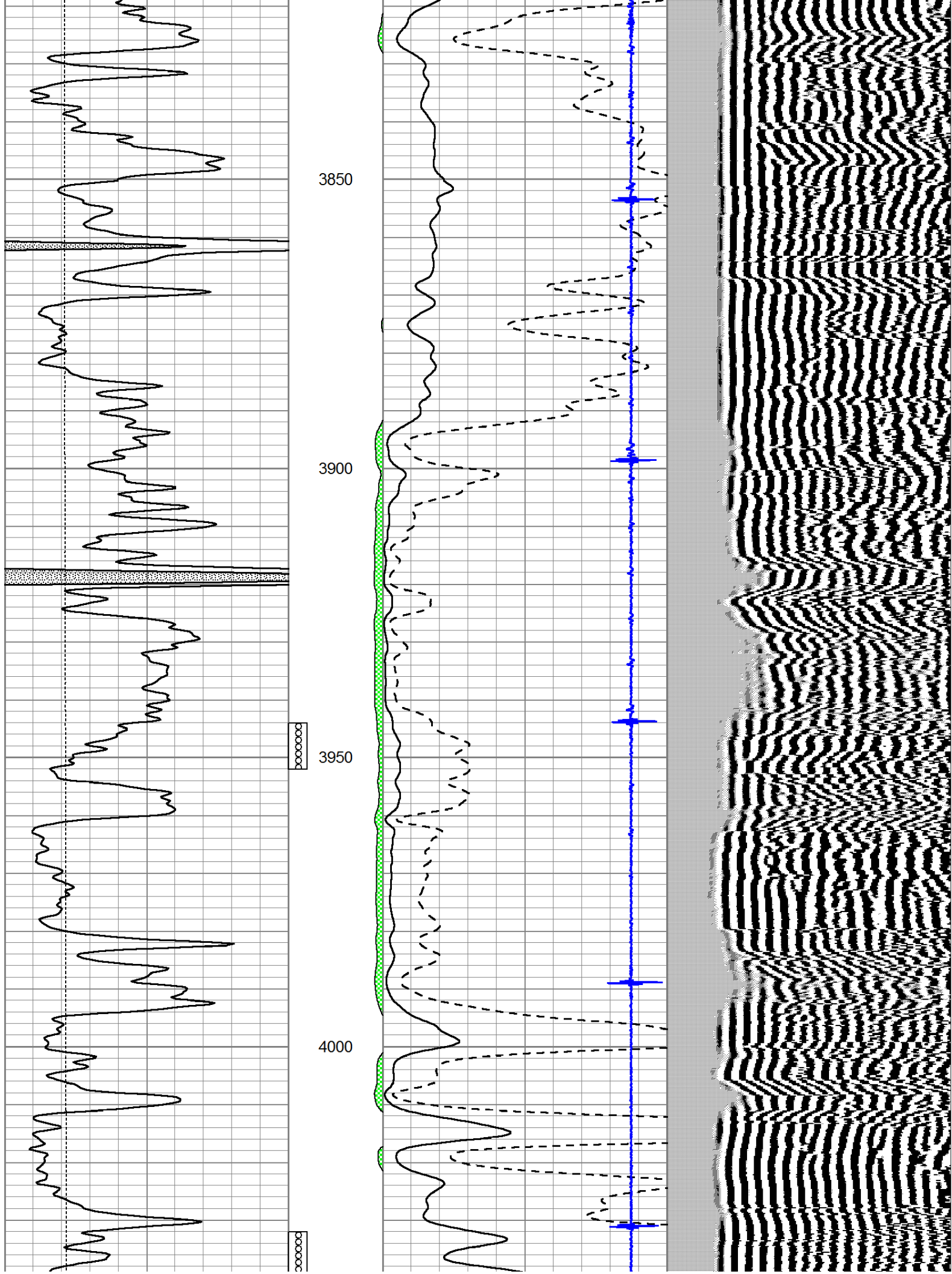
Top of Cement

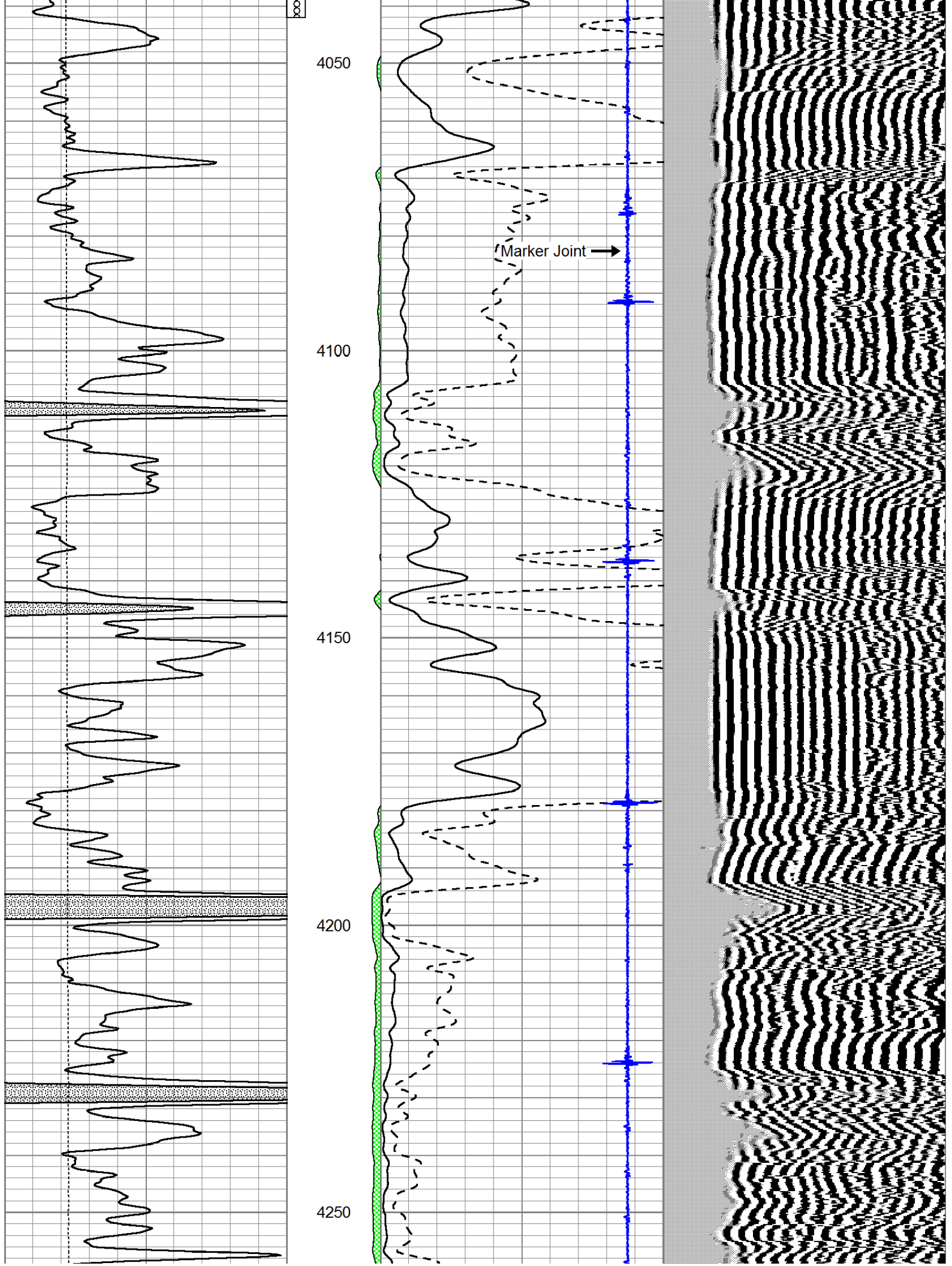


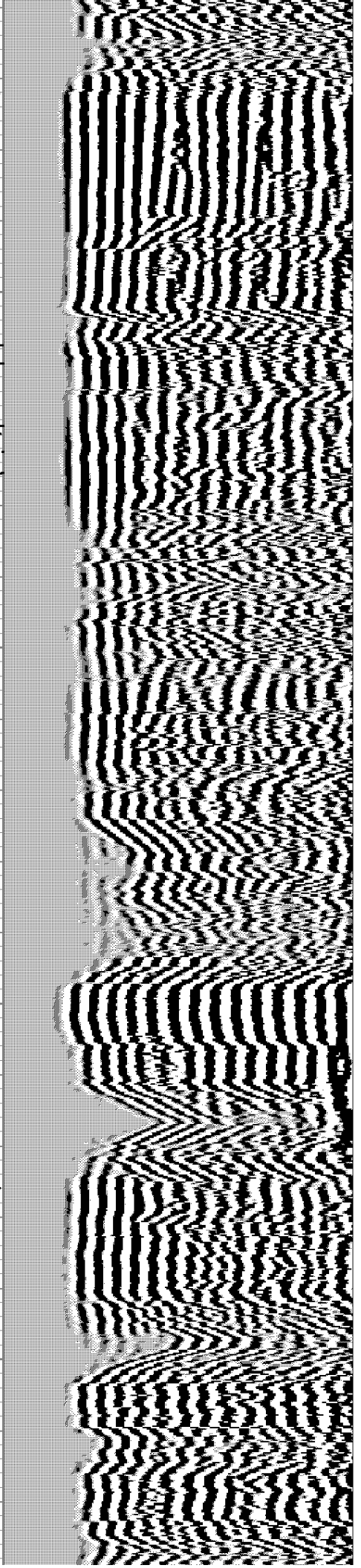
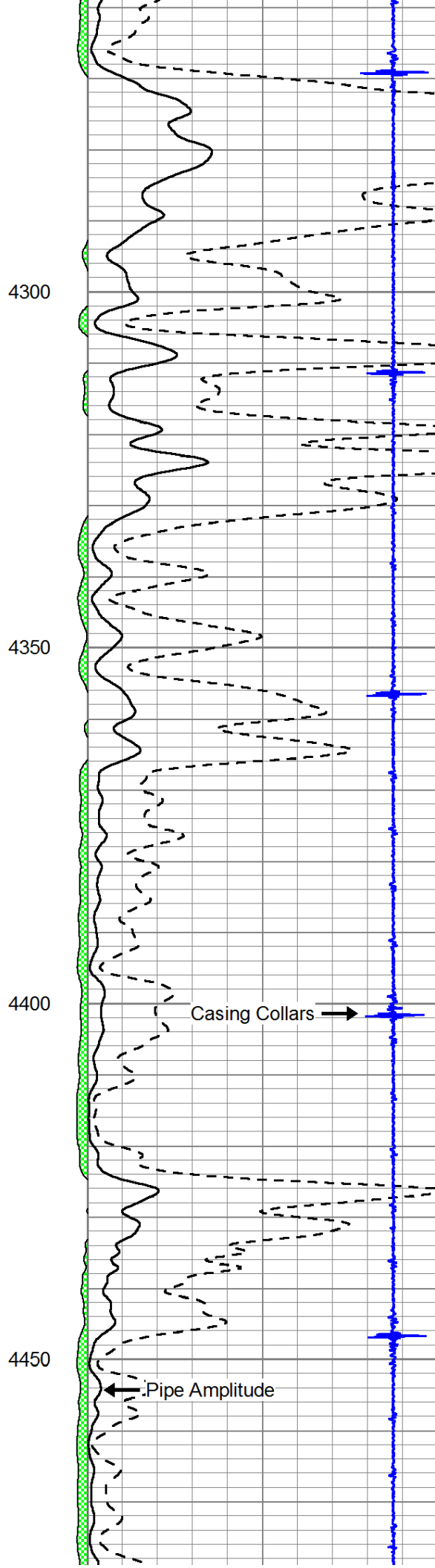
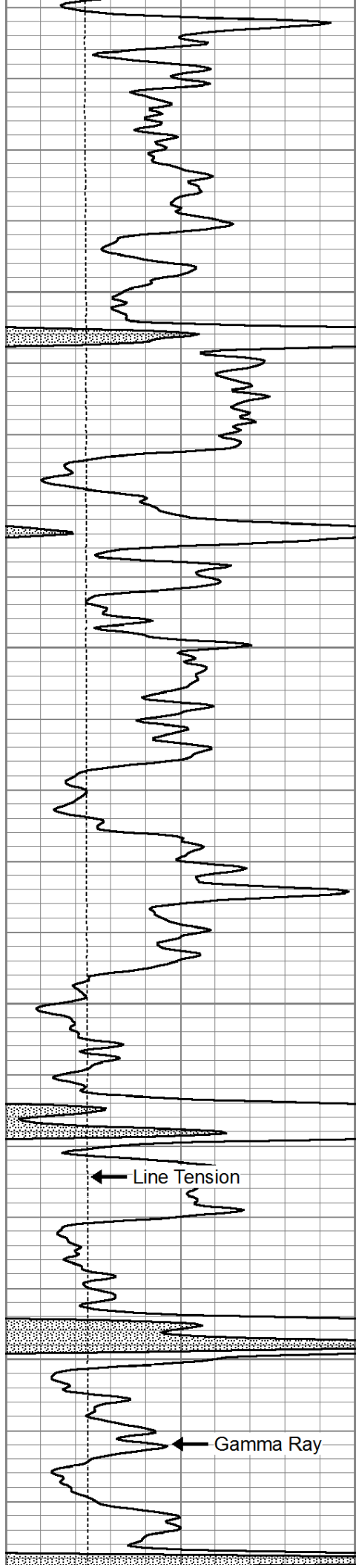


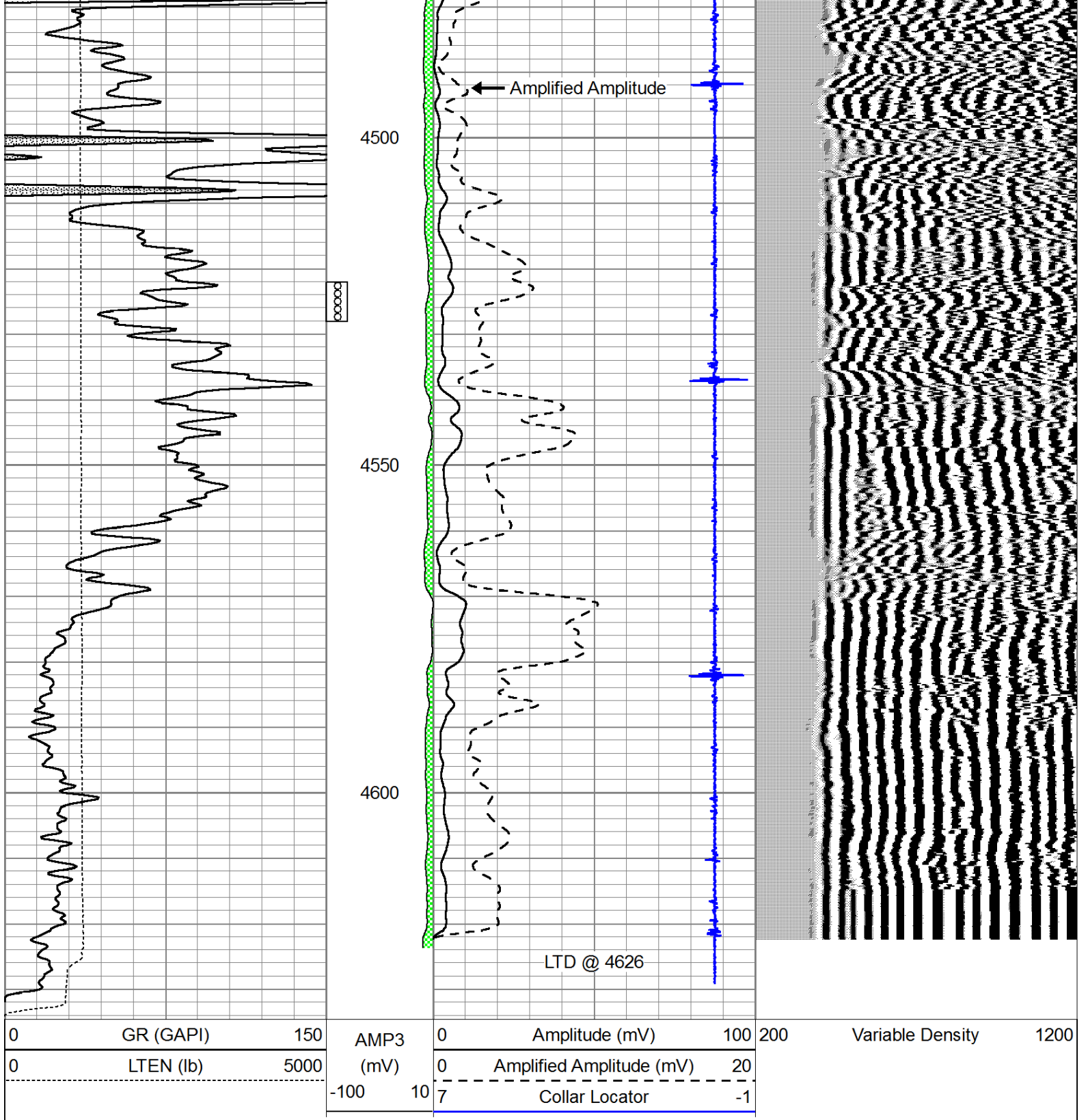












Pioneer Energy Services

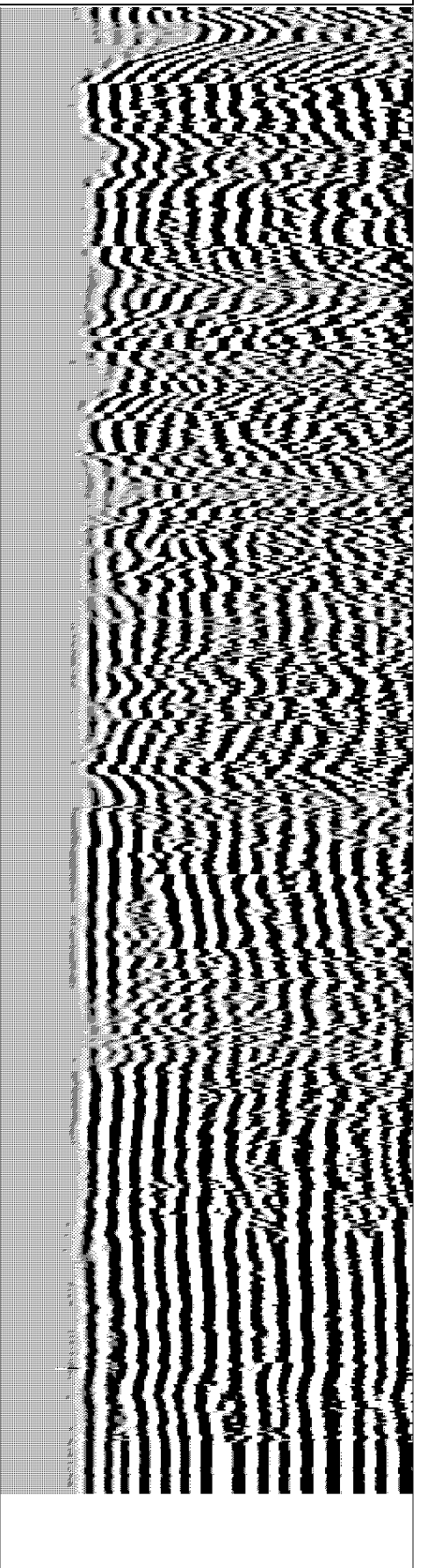
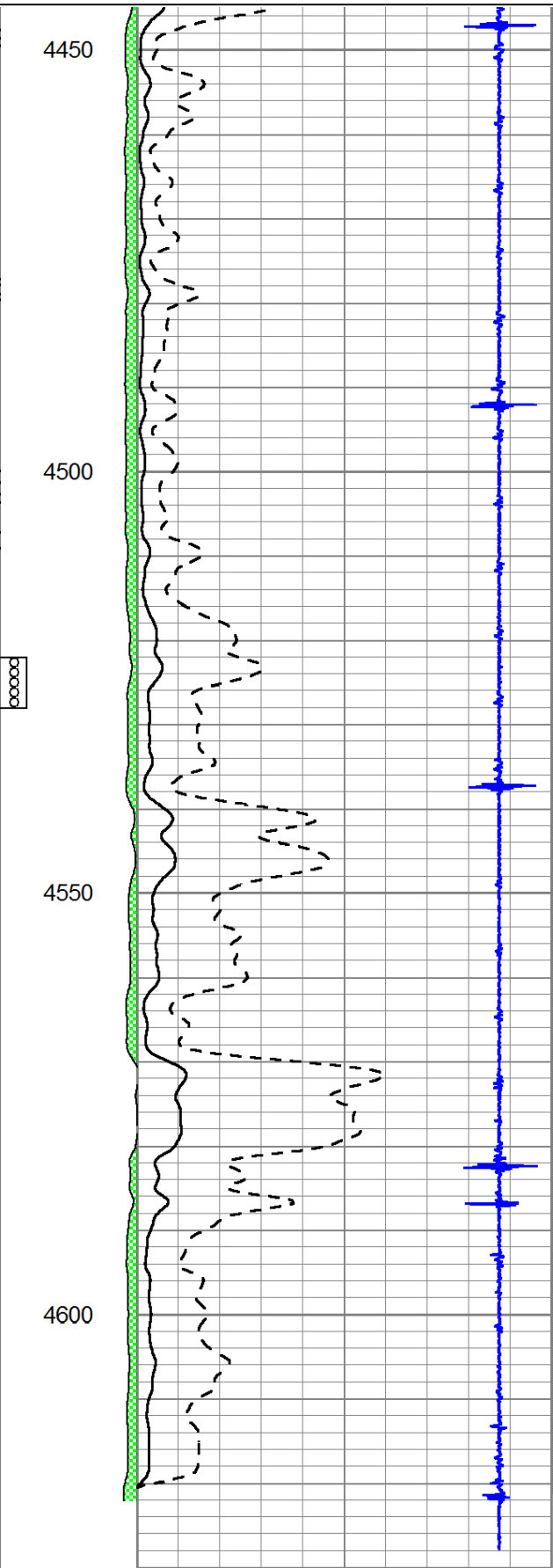
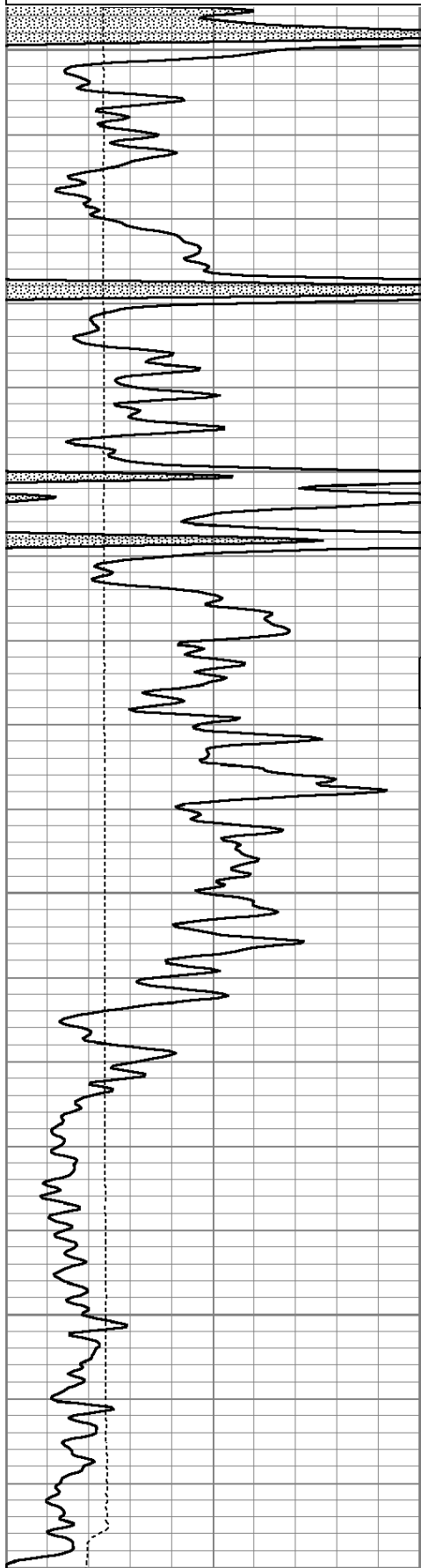
# Repeat Section

Database File: lario-stevensontrust1-4.db  
 Dataset Pathname: Stevenson/grcbl/pass2  
 Presentation Format: cblig  
 Dataset Creation: Thu Oct 04 14:13:41 2012 by Log SCH 111116  
 Charted by: Depth in Feet scaled 1:240



0	LTEN (lb)	5000
---	-----------	------

(mV)	0	Amplified Amplitude (mV)	20
-100	10	7	Collar Locator
			-1



0	GR (GAPI)	150
0	LTEN (lb)	5000

AMP3	0	Amplitude (mV)	100
(mV)	0	Amplified Amplitude (mV)	20
-100	10	7	Collar Locator
			-1

200	Variable Density	1200
-----	------------------	------