



Pioneer Energy Services

Radiation Guard Log

15-109-21,154-00-00

API No.

Company Palomino Petroleum, Inc.

Well Stoll-Olivia No.1

Field Wildcat

County Logan State

Kansas

Location

1029' FNL & 1216' FEL

Other Services
BHCS

Sec: 23 Twp: 13S Rge: 33W

Permanent Datum Ground Level

Log Measured From Kelly Bushing

Elevation 2945

Drilling Measured From Kelly Bushing 10 Ft. Above Perm. Datum

K.B. 2955
D.F. 2945
G.L. 2945

Date 1/21/2013

Run Number One

Depth Driller 4600

Depth Logger 4601

Bottom Logged Interval 4600

Top Log Interval 200

Casing Driller 8.625 @ 223

Casing Logger 222

Bit Size 7.875

Type Fluid in Hole Chemical

Salinity,ppm CL 5,500

Density / Viscosity 9.1 45

pH / Fluid Loss 10.5 4.8

Source of Sample Flowline

Rm @ Meas. Temp .44 @ 42

Rmf @ Meas. Temp .33 @ 42

Rmc @ Meas. Temp .59 @ 42

Source of Rmf / Rmc Charts

Rm @ BHT .15 @ 122

Operating Rig Time 4 1/2 Hours

Max Rec. Temp. F 122

Equipment Number 17

Location Hays

Recorded By C. Desaire

Witnessed By Kevin Bailey

<<< Fold Here >>>

All interpretations are opinions based on inferences from electrical or other measurements and we cannot and do not guarantee the accuracy or correctness of any interpretation, and we shall not, except in the case of gross or willful negligence on our part, be liable or responsible for any loss, costs, damages, or expenses incurred or sustained by anyone resulting from any interpretation made by any of our officers, agents or employees. These interpretations are also subject to our general terms and conditions set out in our current Price Schedule.

Comments

Thank you for using Pioneer Energy Services
www.pioneerenergy.com
785 625 3858

Oakley KS, 13 S to Quail Rd,
5 W to 390 Rd, 1/2 S, W Into at farm

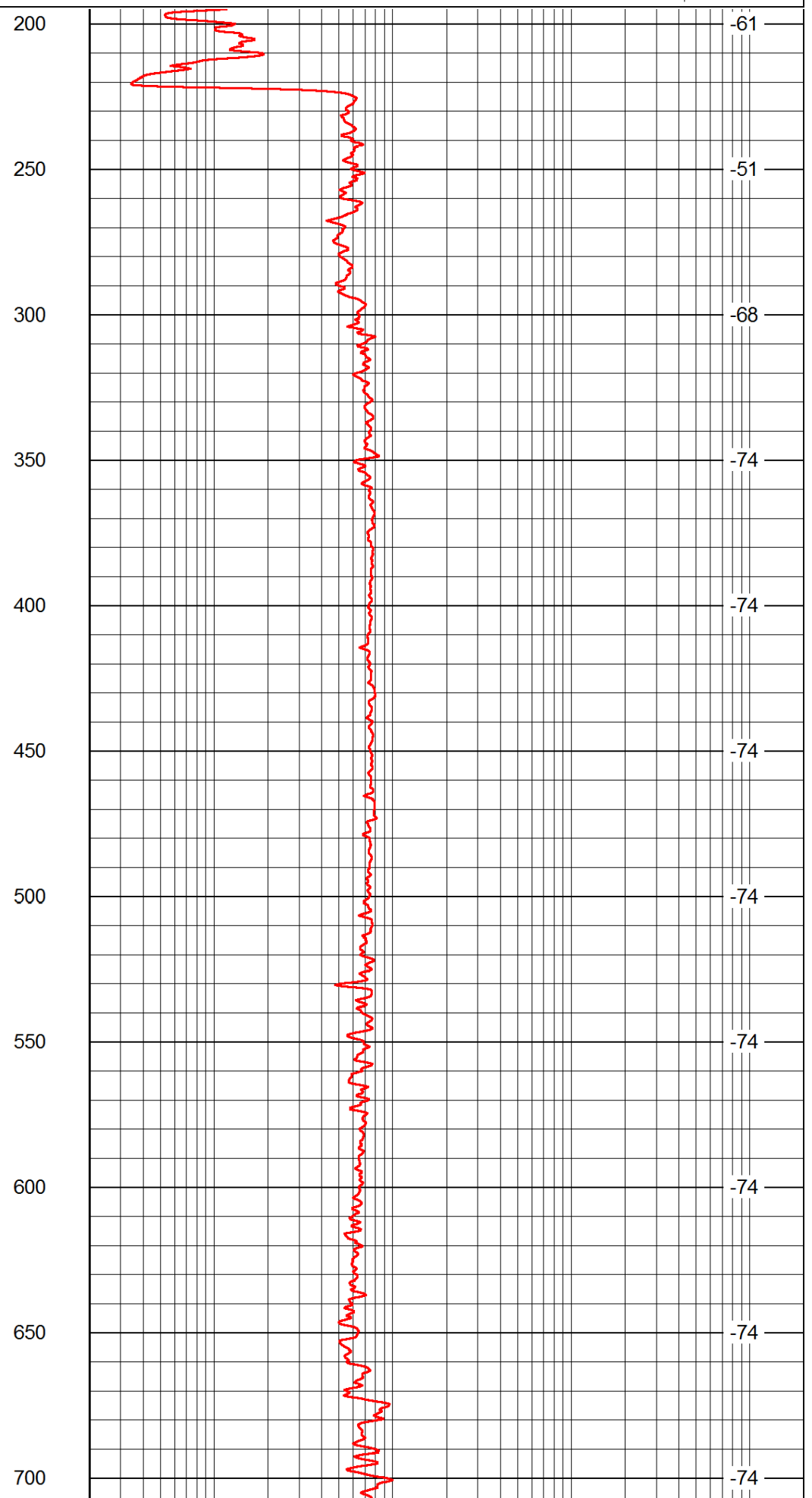
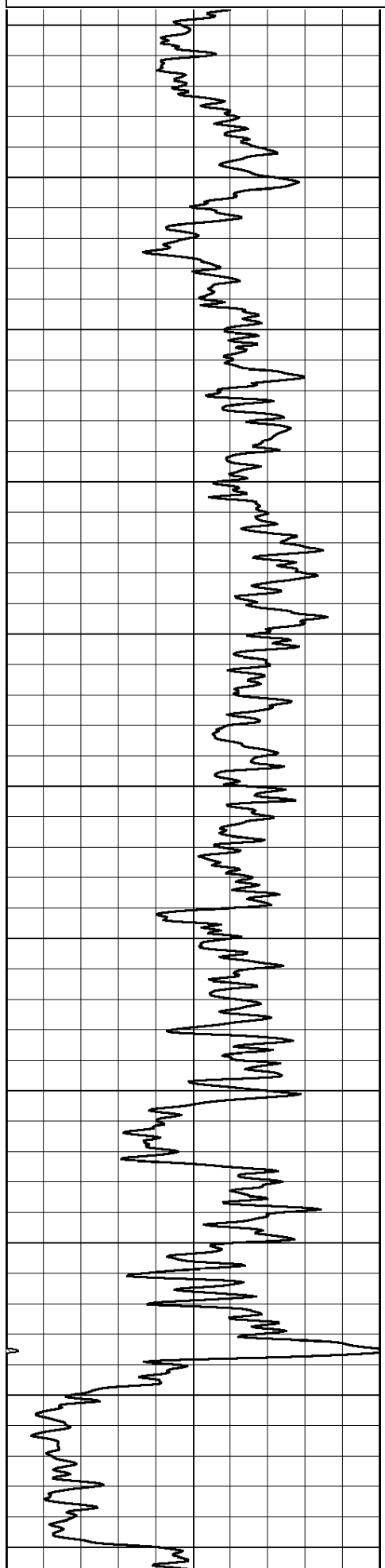
Database File: c:\warrior\data\palomino_stoll-olivia #1\palominohd.db
 Dataset Pathname: rag/palrag2
 Presentation Format: rag2in
 Dataset Creation: Mon Jan 21 11:07:35 2013
 Charted by: Depth in Feet scaled 1:600

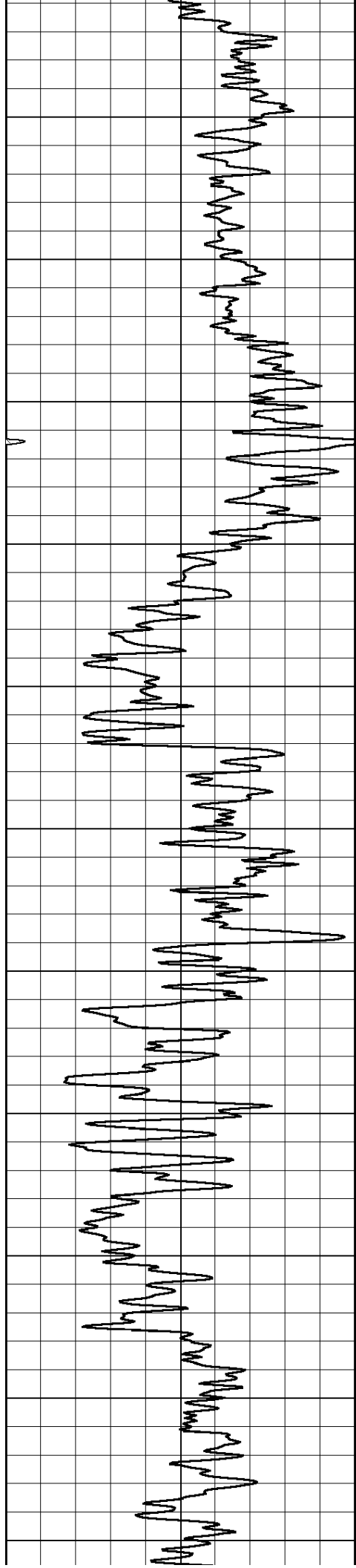
0 Gamma Ray 150

0.2 lgrd

2000

LSPD





750

800

850

900

950

1000

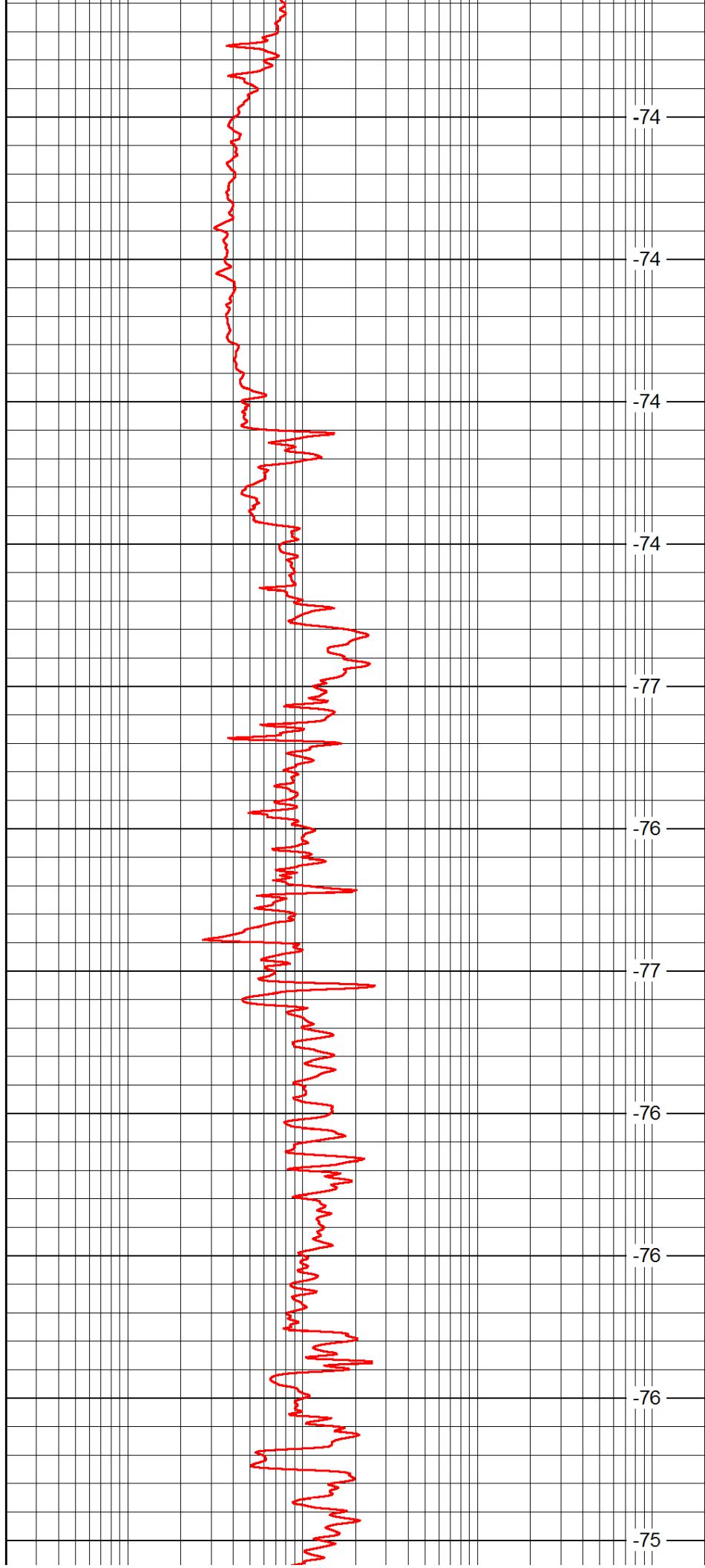
1050

1100

1150

1200

1250



-74

-74

-74

-74

-77

-76

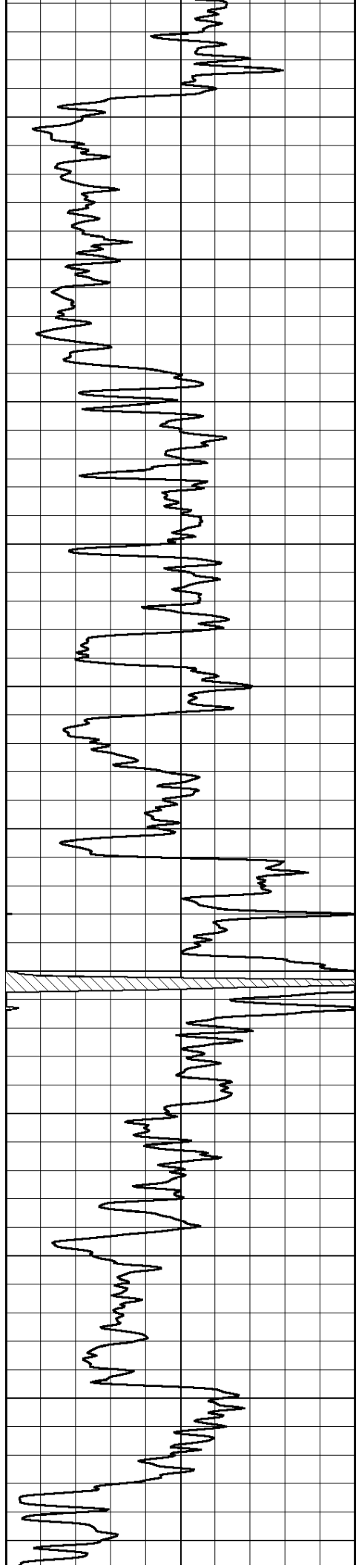
-77

-76

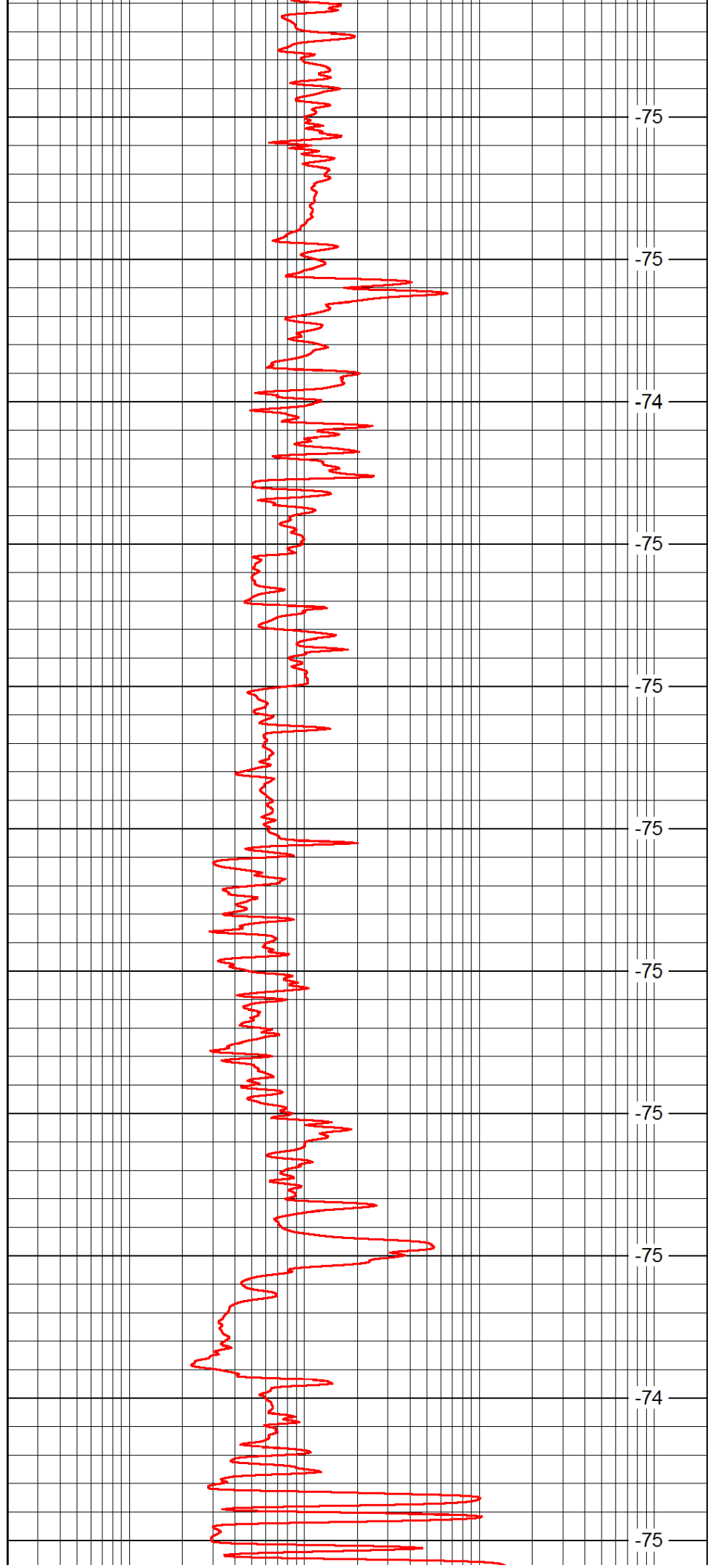
-76

-76

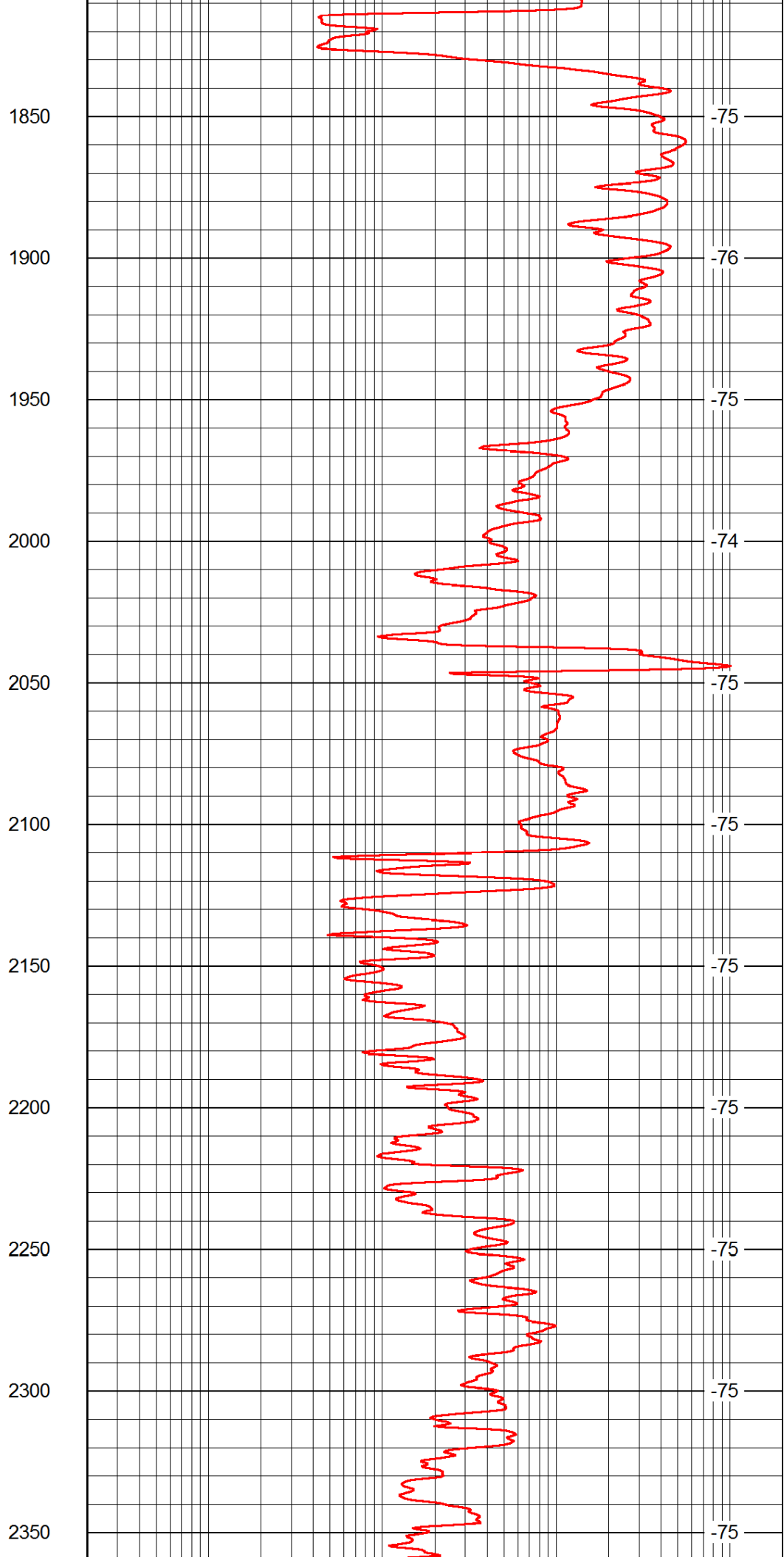
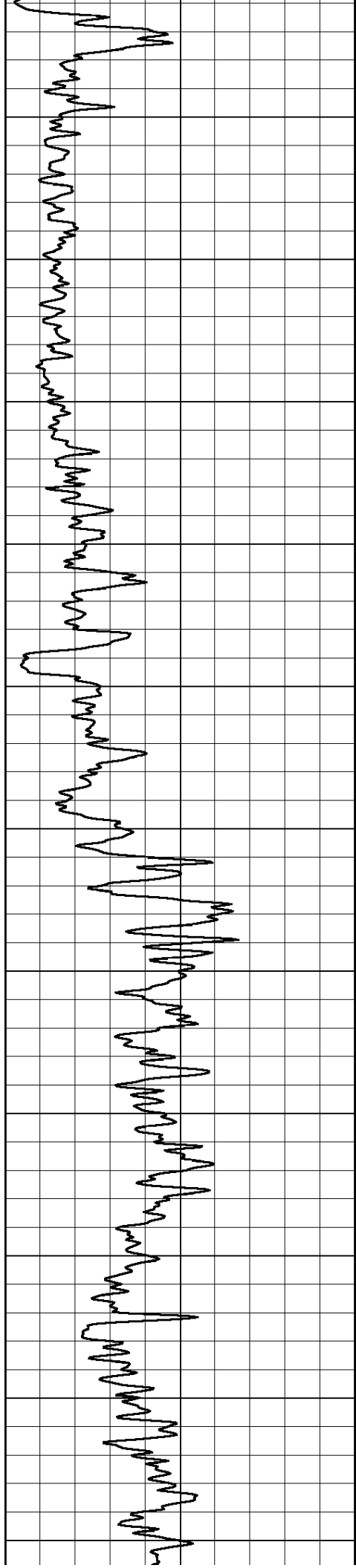
-75

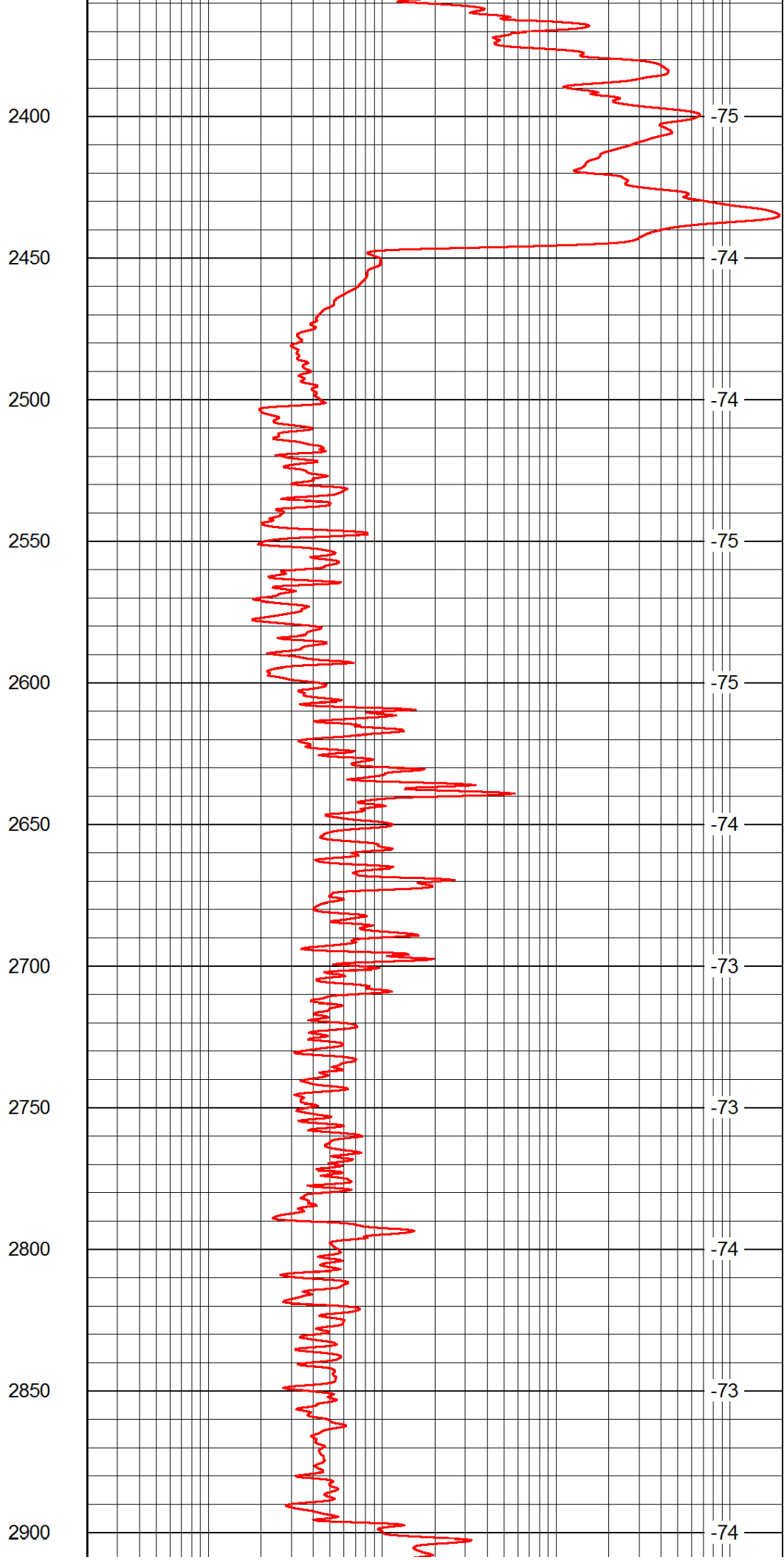
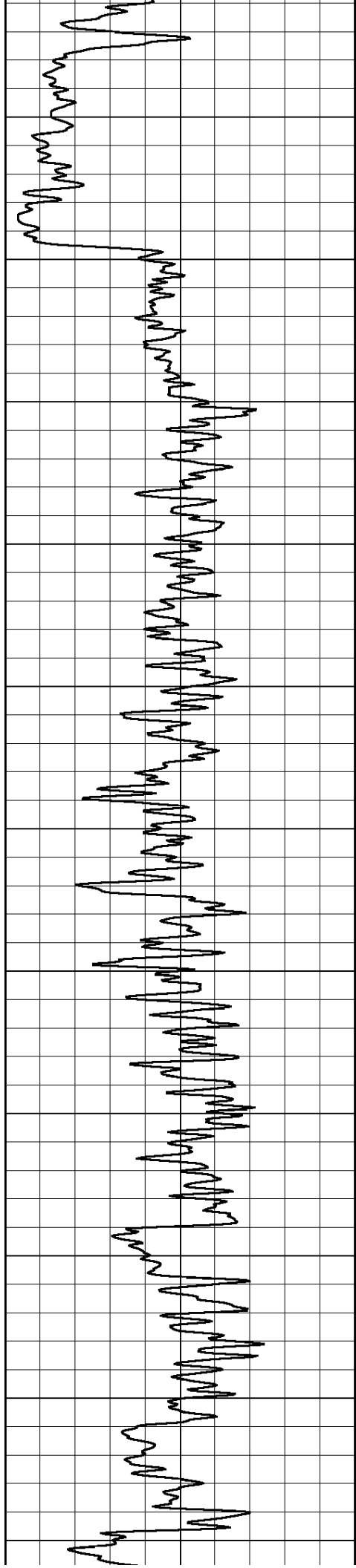


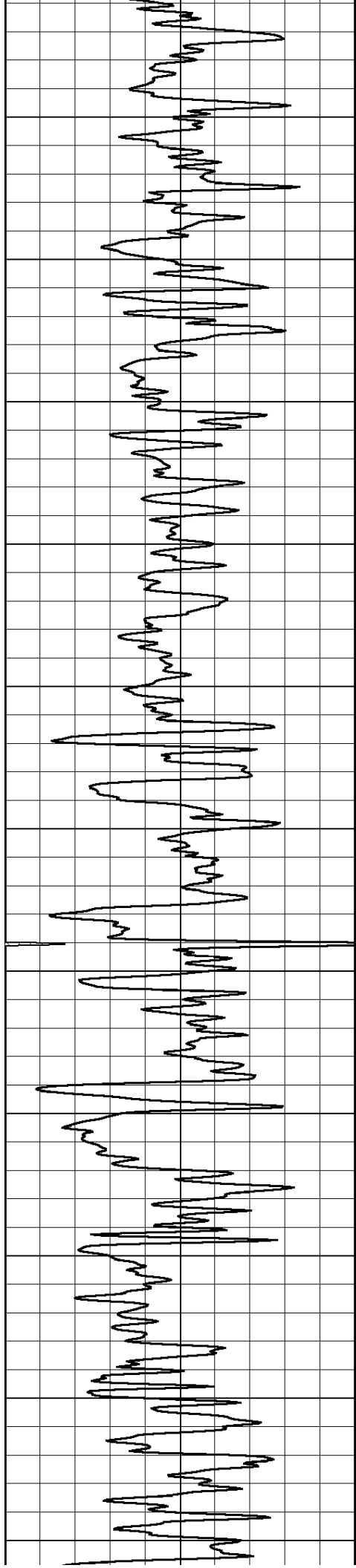
1300
1350
1400
1450
1500
1550
1600
1650
1700
1750
1800



-75
-75
-74
-75
-75
-75
-75
-75
-75
-74
-75







2950

3000

3050

3100

3150

3200

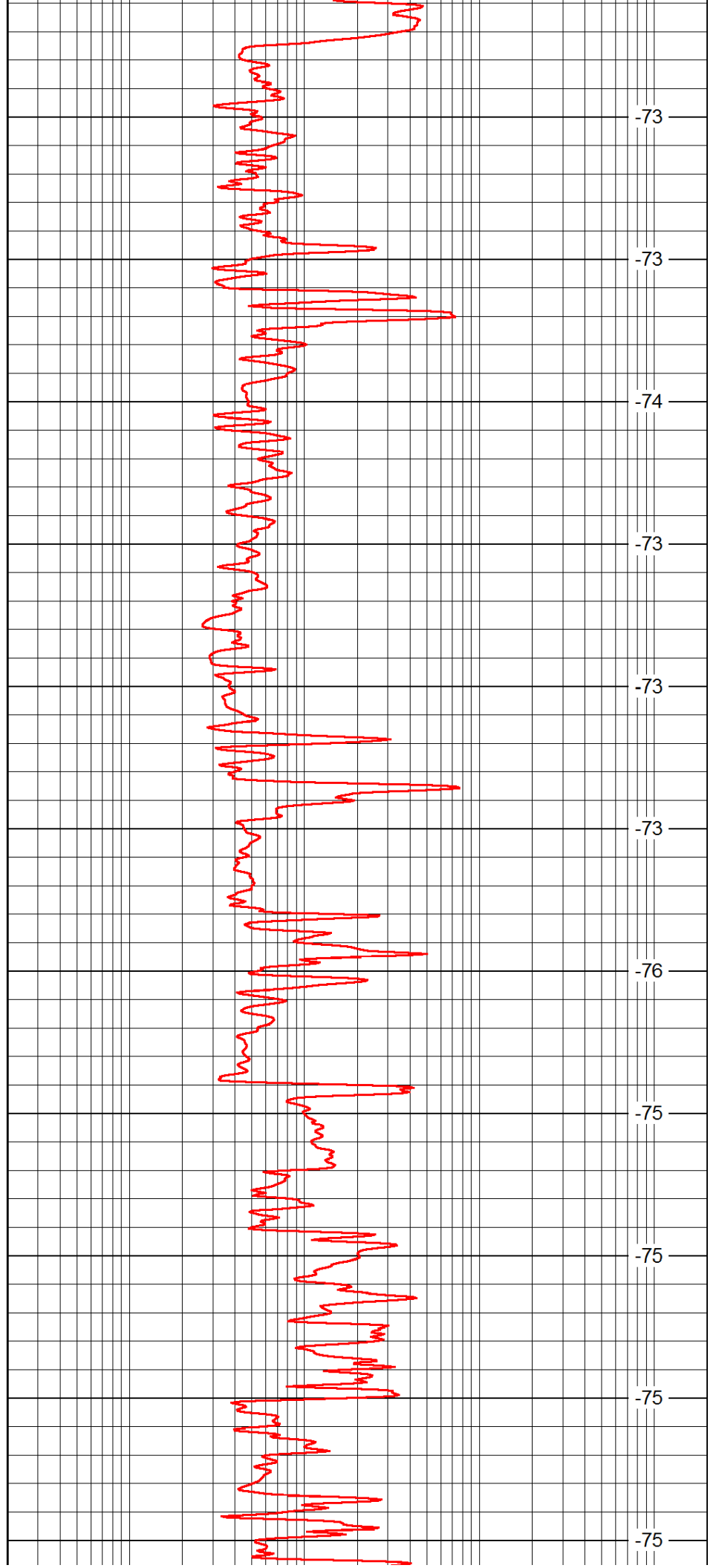
3250

3300

3350

3400

3450



-73

-73

-74

-73

-73

-73

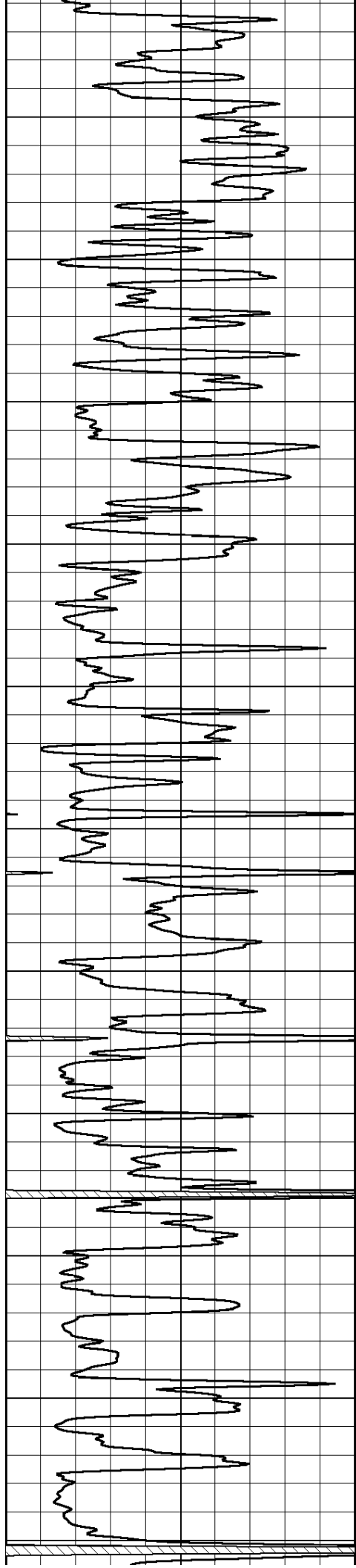
-76

-75

-75

-75

-75



3500

3550

3600

3650

3700

3750

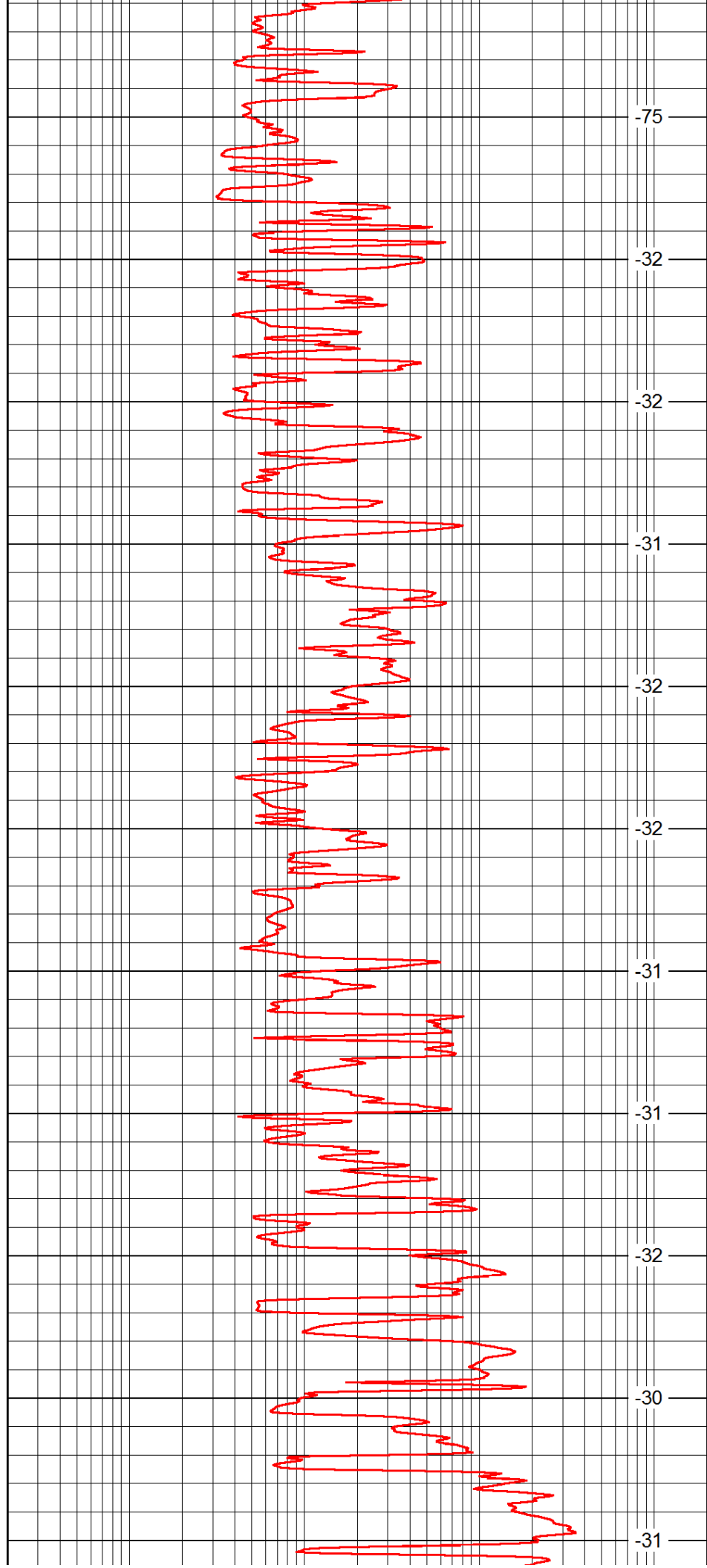
3800

3850

3900

3950

4000



-75

-32

-32

-31

-32

-32

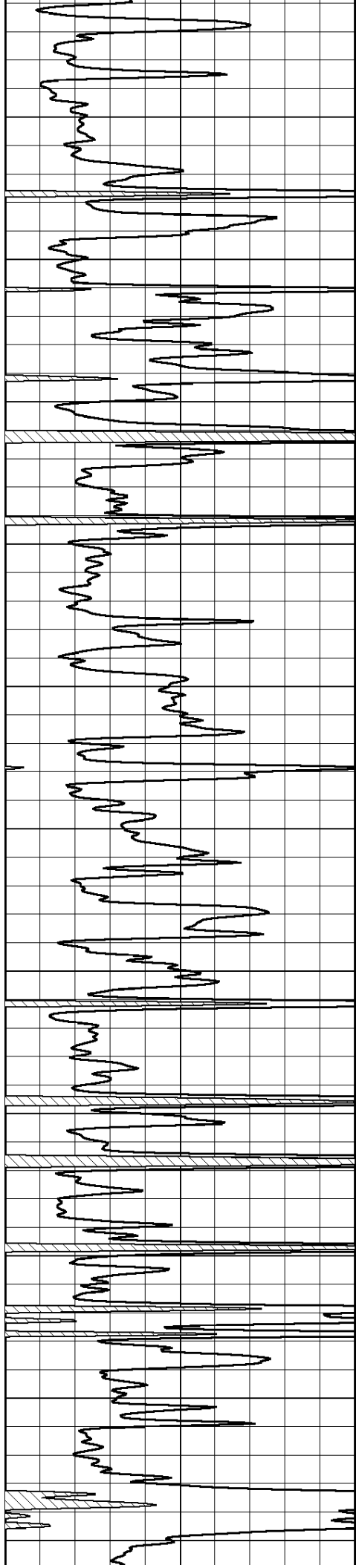
-31

-31

-32

-30

-31



4050

4100

4150

4200

4250

4300

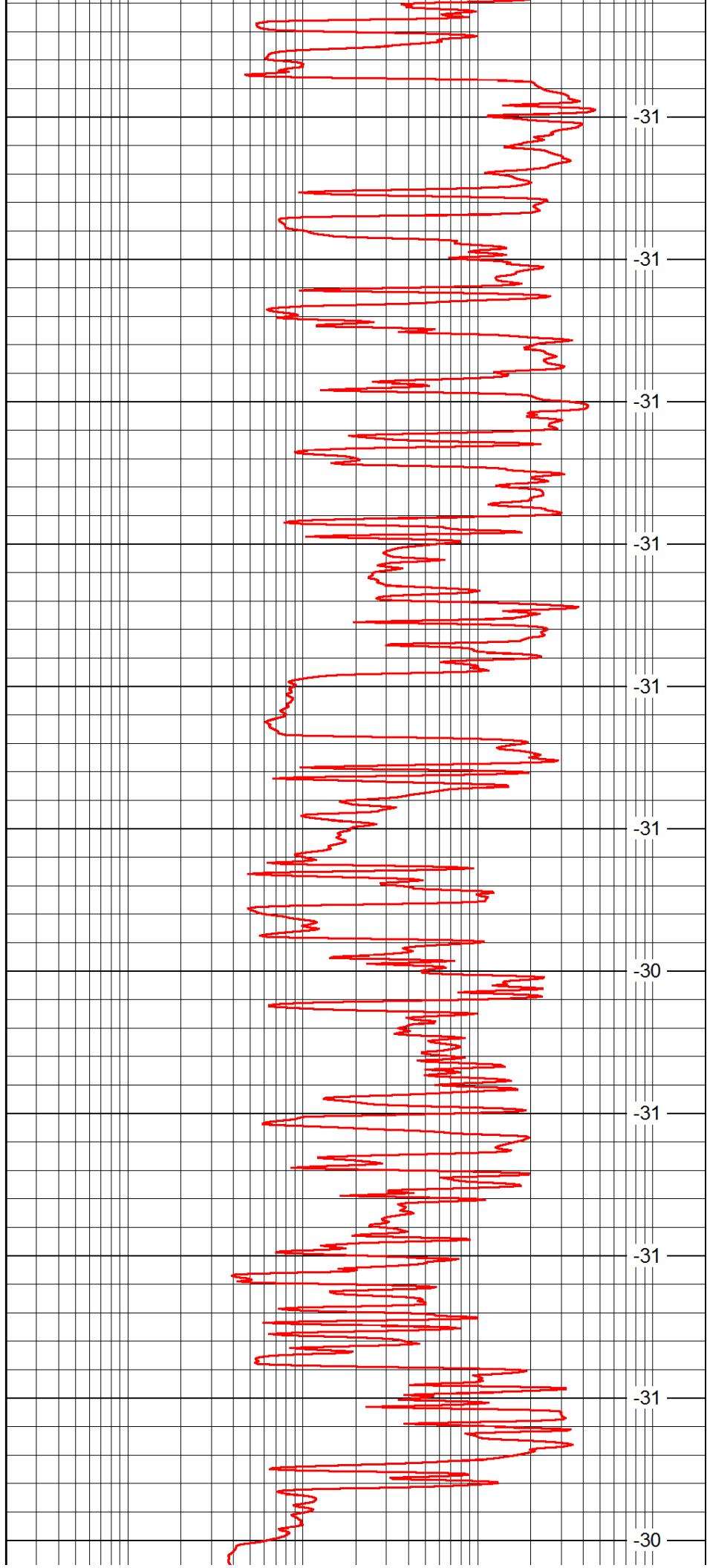
4350

4400

4450

4500

4550



-31

-31

-31

-31

-31

-31

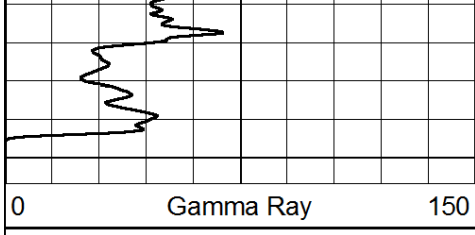
-30

-31

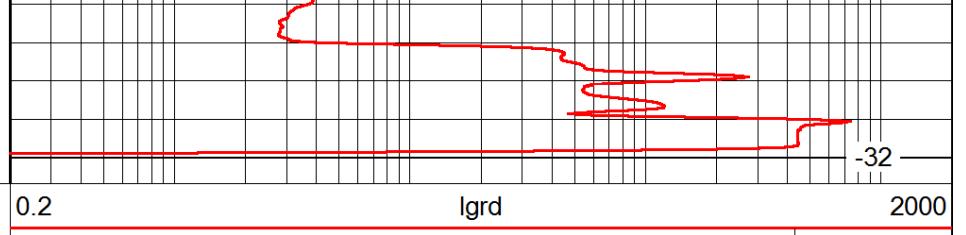
-31

-31

-30



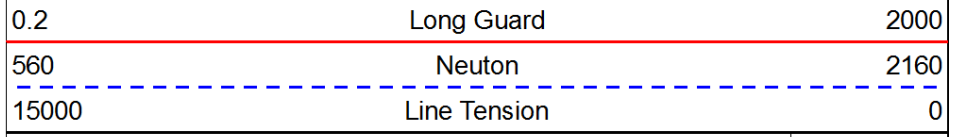
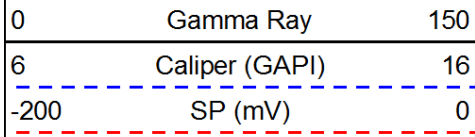
4600



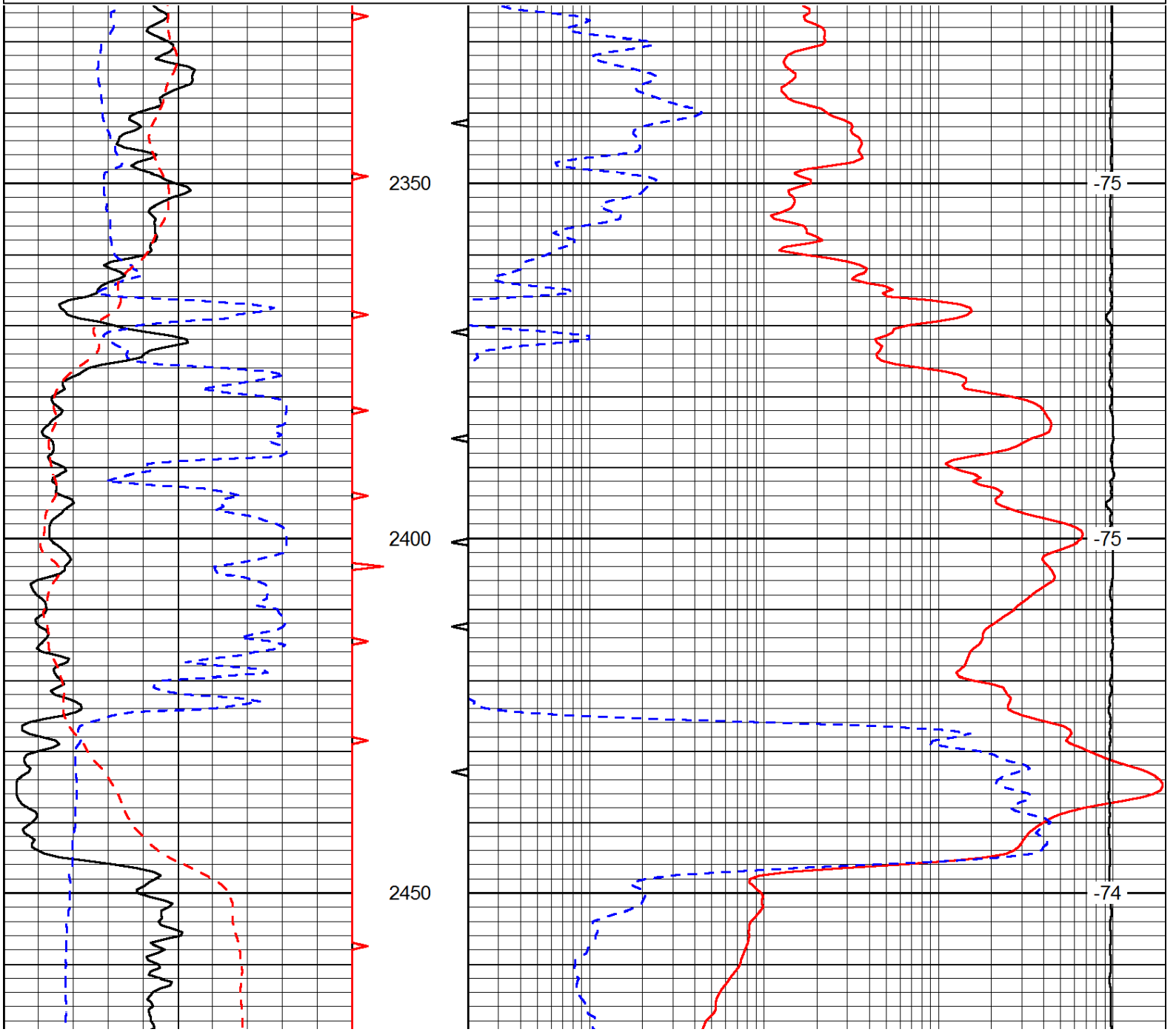
-32

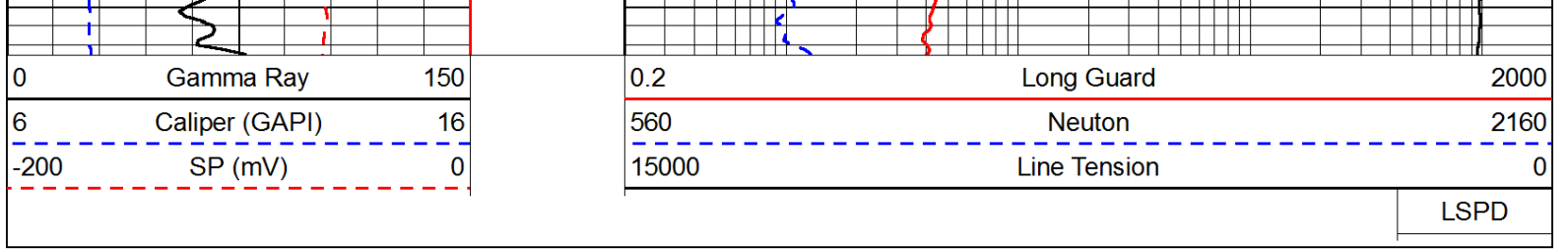
LSPD

Database File: c:\warrior\data\palomino_stoll-olivia #1\palominohd.db
 Dataset Pathname: rag/palrag2
 Presentation Format: rag
 Dataset Creation: Mon Jan 21 11:07:35 2013
 Charted by: Depth in Feet scaled 1:240

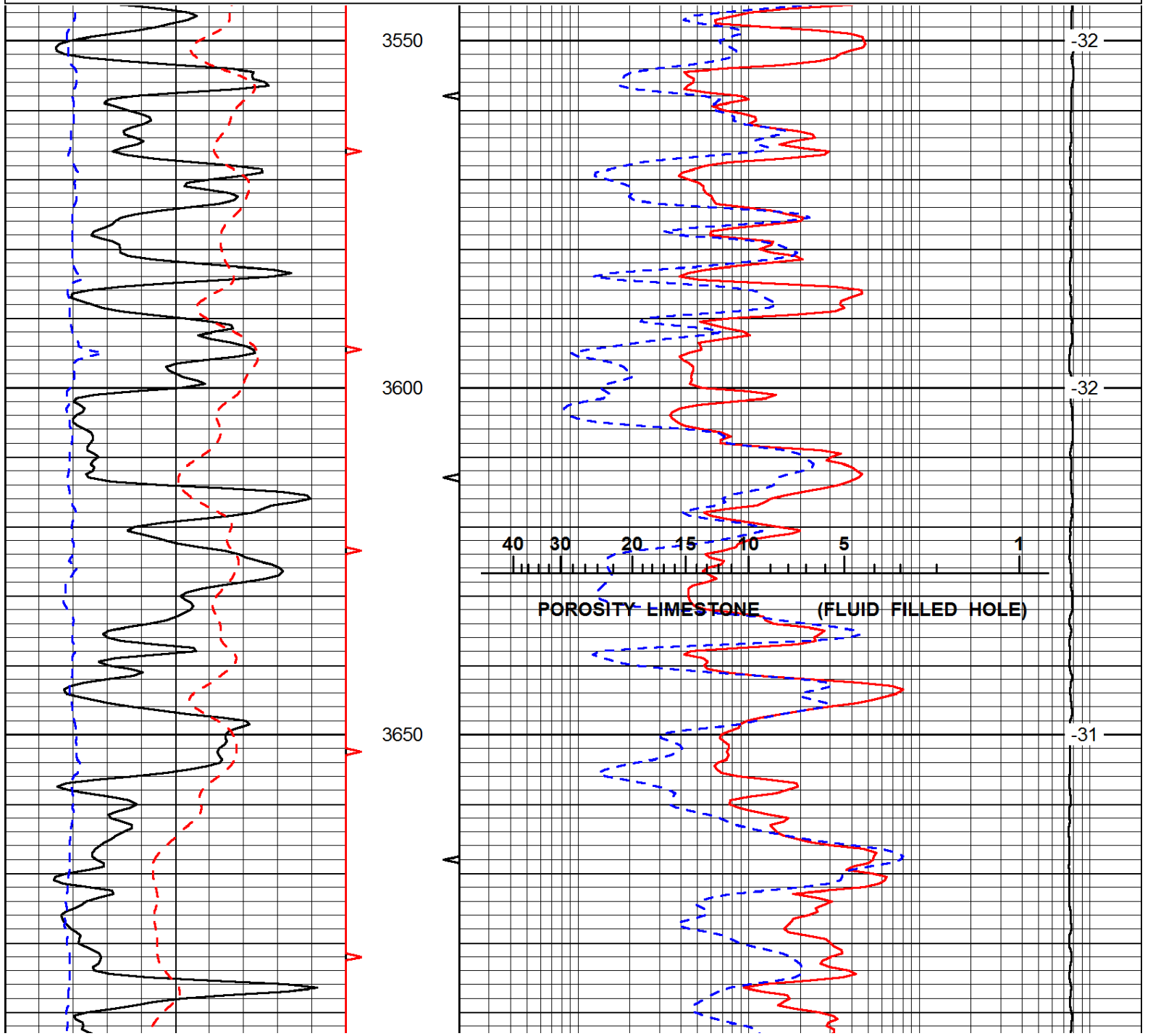
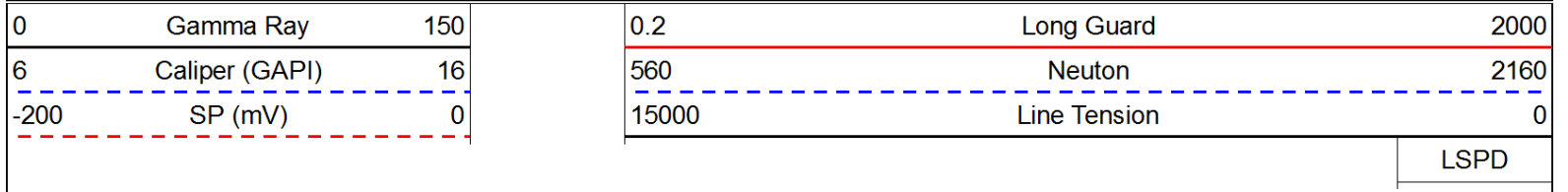


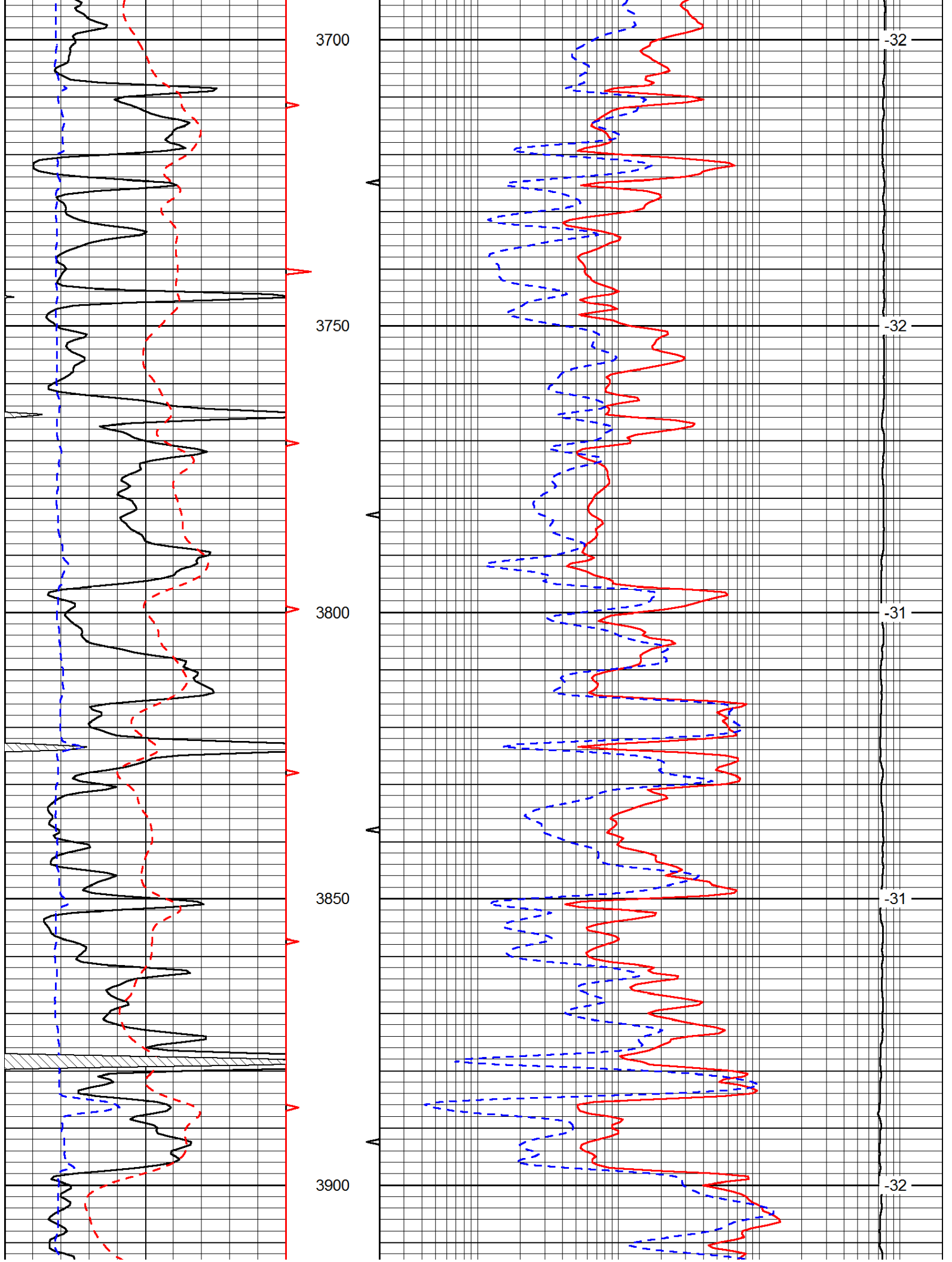
LSPD

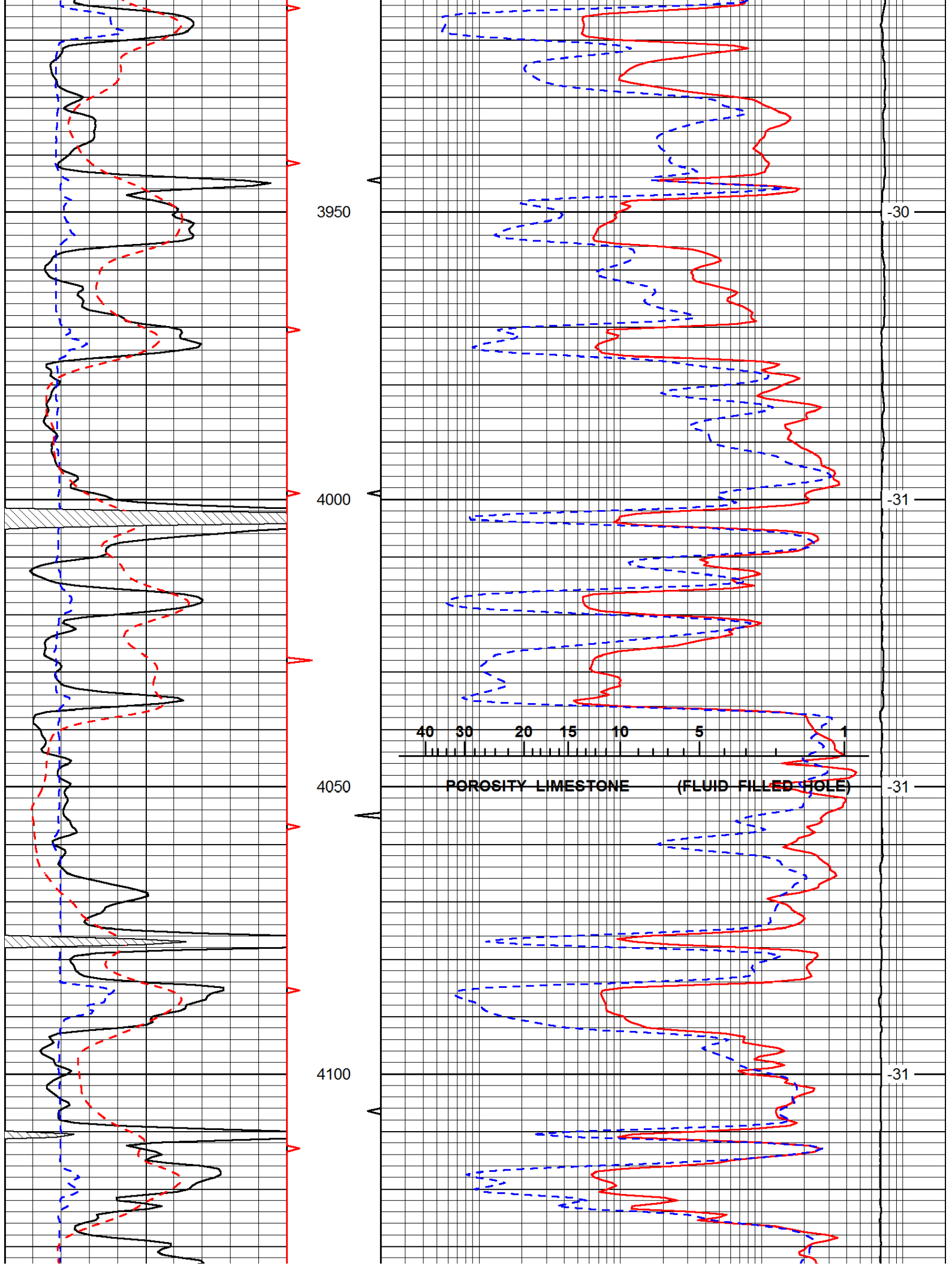


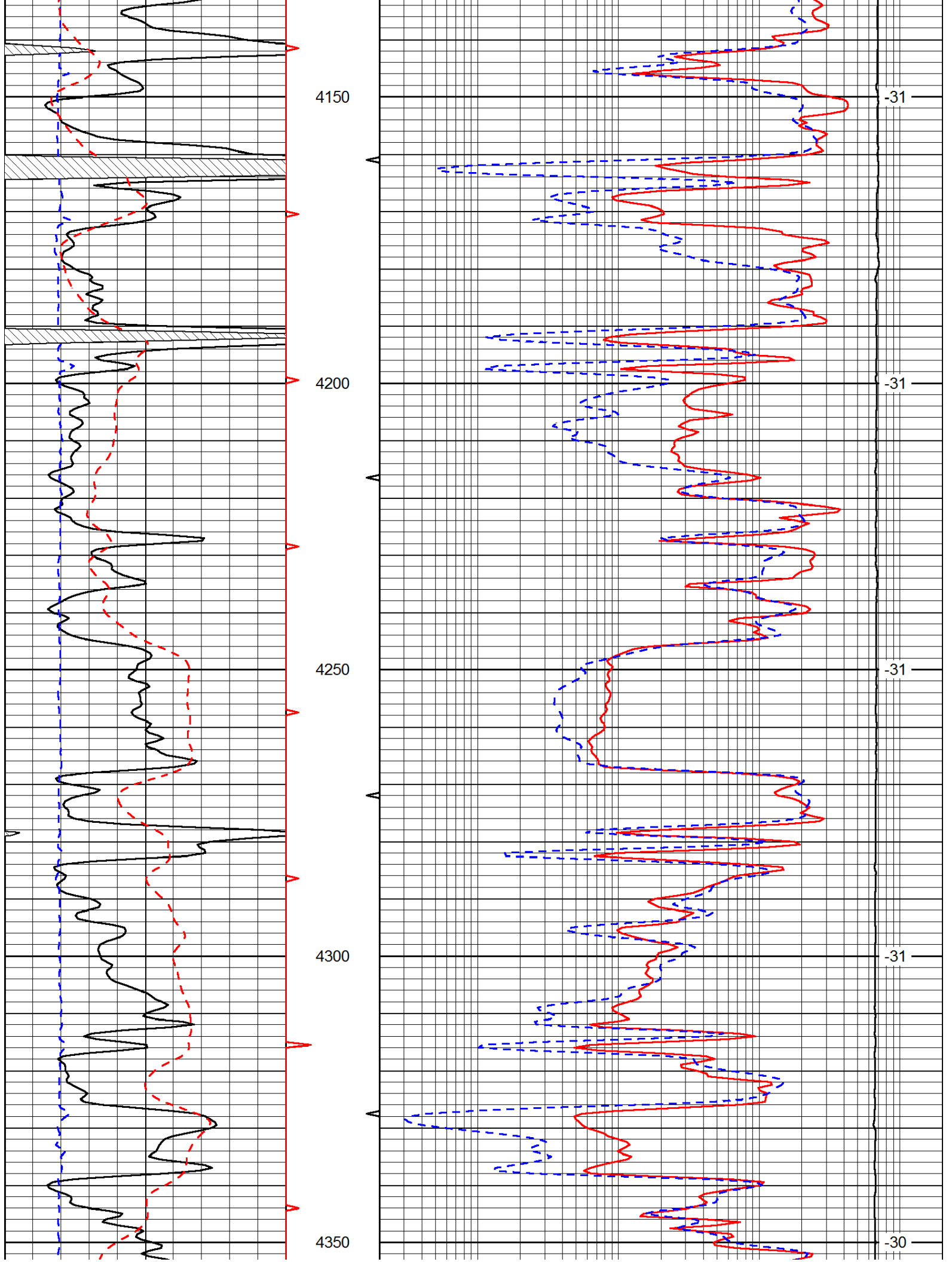


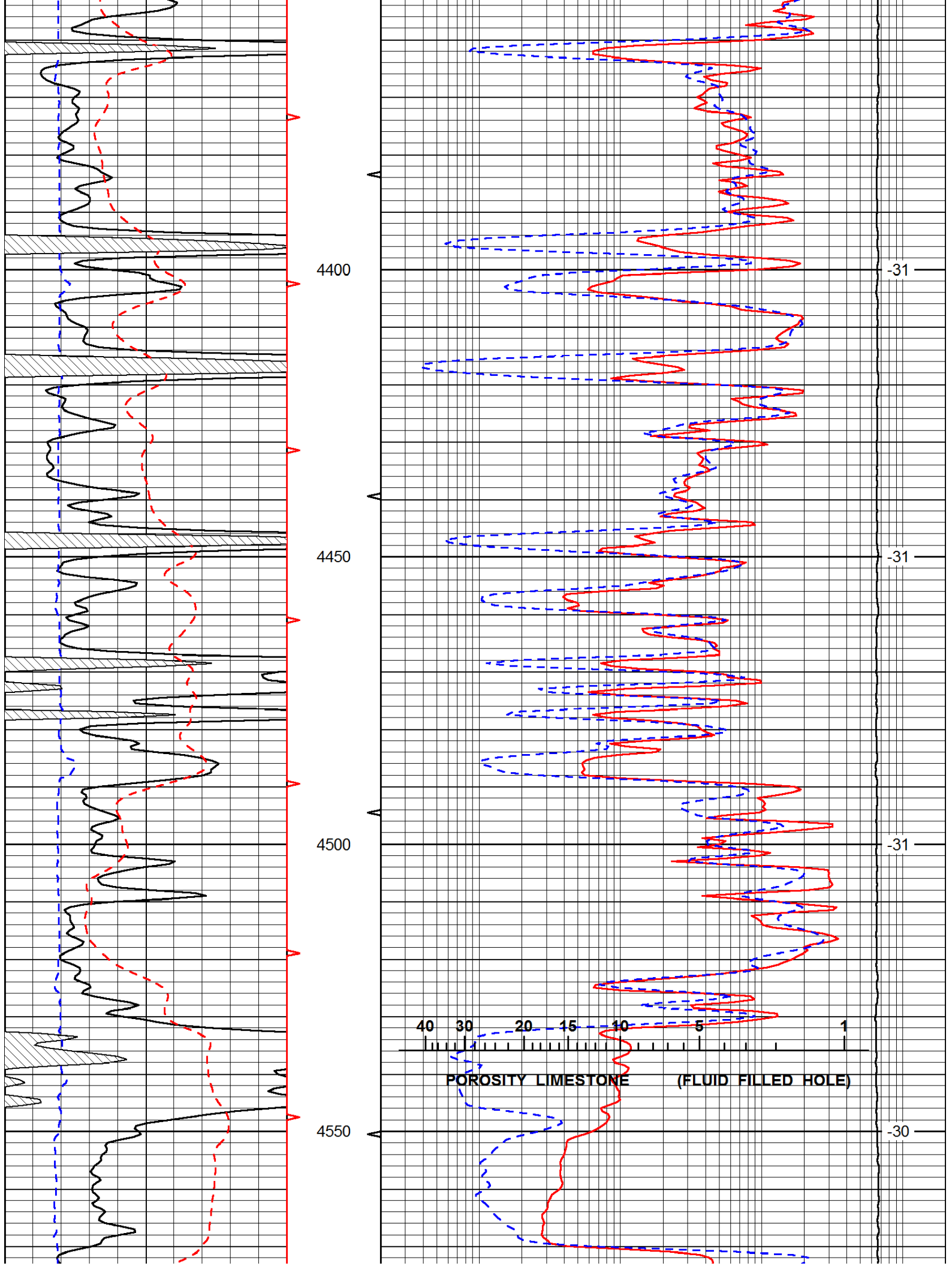
Database File: c:\warrior\data\palomino_stoll-olivia #1\palominohd.db
 Dataset Pathname: rag/palrag2
 Presentation Format: rag
 Dataset Creation: Mon Jan 21 11:07:35 2013
 Charted by: Depth in Feet scaled 1:240

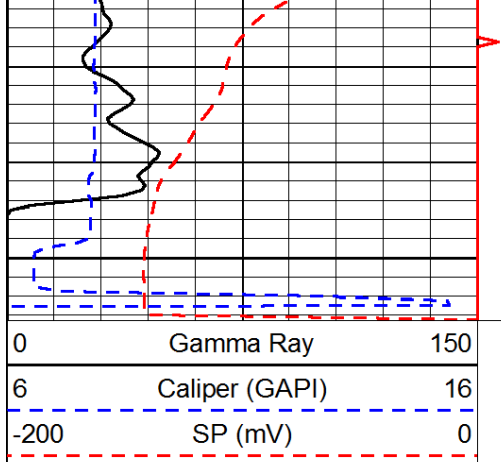




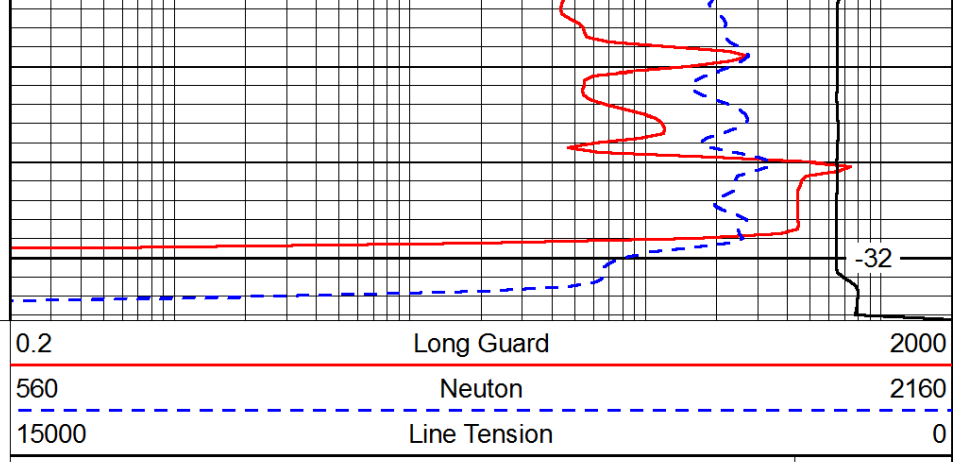








4600



-32

LSPD