



Pioneer Energy Services

Borehole Compensated Sonic Log

15-109-21,154-00-00

API No.

Company **Palomino Petroleum, Inc.**
 Well **Stoll-Olivia No.1**
 Field **Wildcat**
 County **Logan** State **Kansas**

Location **1029' FNL & 1216' FEL**
 Sec: **23** Twp: **13S** Rge: **33W**

Permanent Datum **Ground Level** Elevation **2945**
 Log Measured From **Kelly Bushing** 10 Ft. Above Perm. Datum
 Drilling Measured From **Kelly Bushing**

Other Services
RAG
 Elevation
 K.B. 2955
 D.F. 2945
 G.L. 2945

Date	1/21/2013	
Run Number	Two	
Type Log	BHC Sonic	
Depth Driller	4600	
Depth Logger	4601	
Bottom Logged Interval	4590	
Top Logged Interval	200	
Type Fluid In Hole	Chemical	
Salinity, PPM CL	5.500	
Density	9.1	
Level	Full	
Max. Rec. Temp. F	122	
Operating Rig Time	4 1/2 Hours	
Equipment -- Location	17 Hays	
Recorded By	C. Desaire	
Witnessed By	Kevin Bailey	

Borehole Record				Casing Record			
Run No.	Bit	From	To	Size	Wgt.	From	To
1	12.25	00	223	8.625	24#	00	223
2	7.875	223	4600				

<<< Fold Here >>>

All interpretations are opinions based on inferences from electrical or other measurements and we cannot and do not guarantee the accuracy or correctness of any interpretation, and we shall not, except in the case of gross or willful negligence on our part, be liable or responsible for any loss, costs, damages, or expenses incurred or sustained by anyone resulting from any interpretation made by any of our officers, agents or employees. These interpretations are also subject to our general terms and conditions set out in our current Price Schedule.

Comments

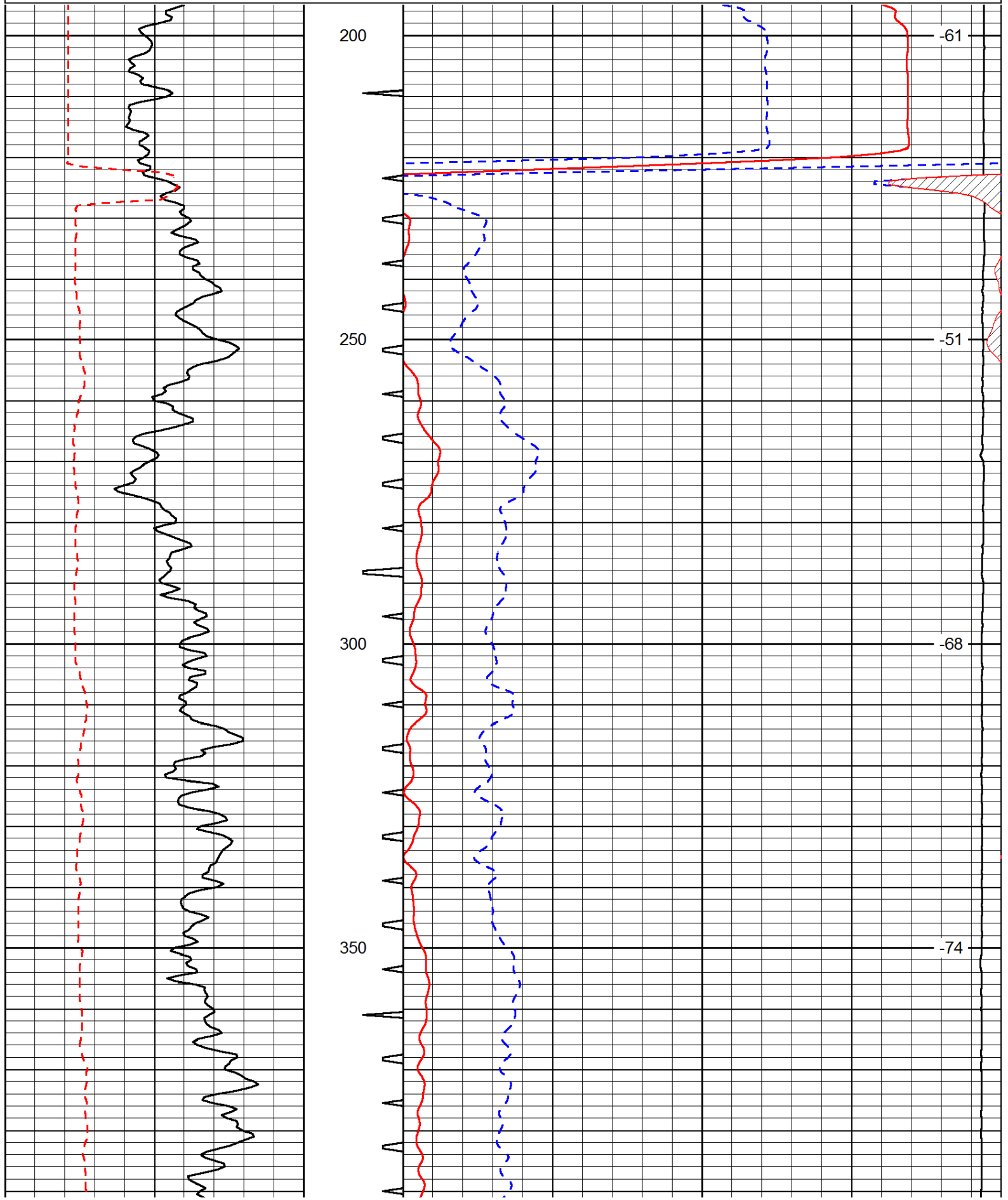
Thank you for using Pioneer Energy Services
www.pioneerenergy.com
 785 625 3858

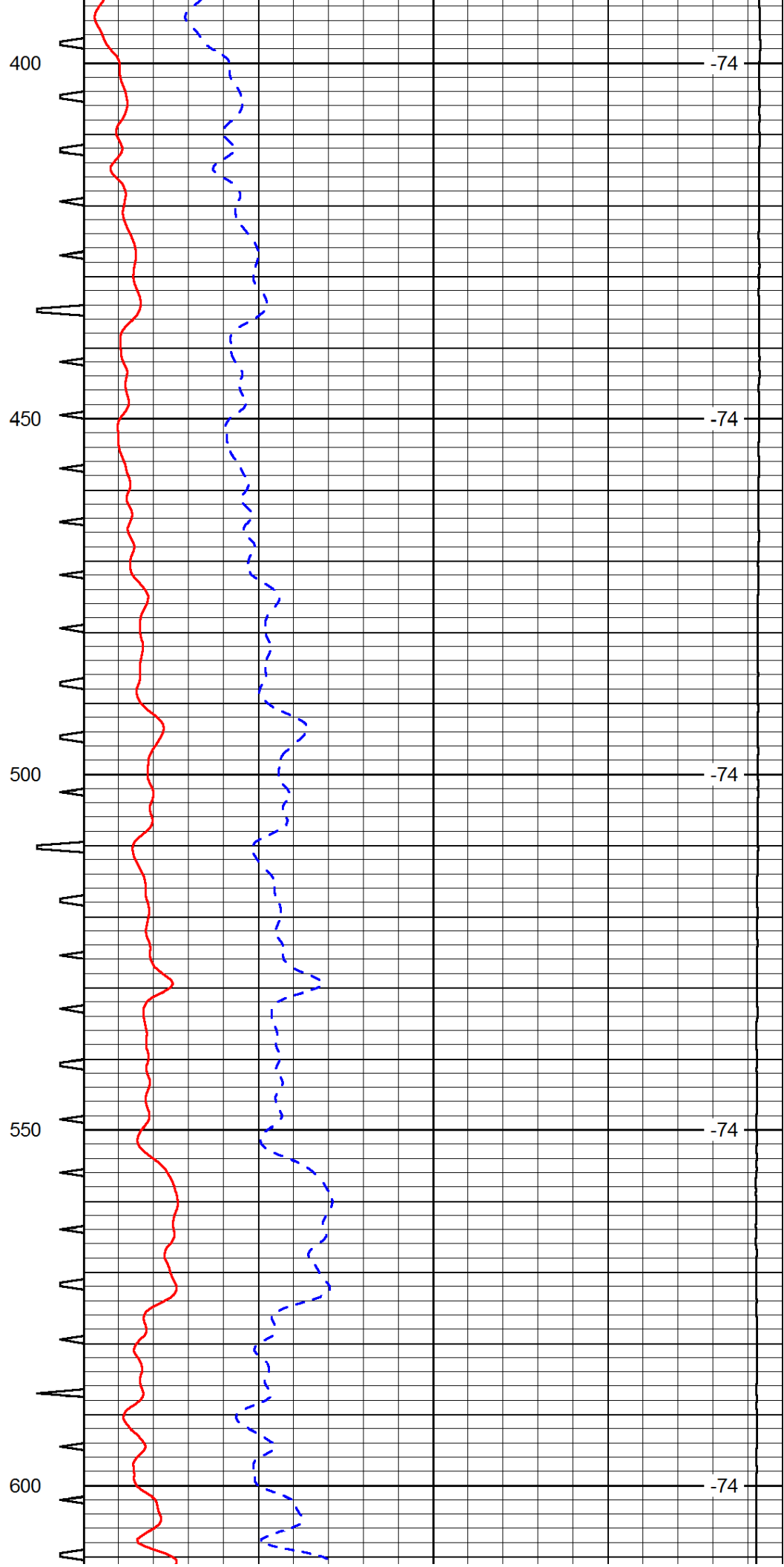
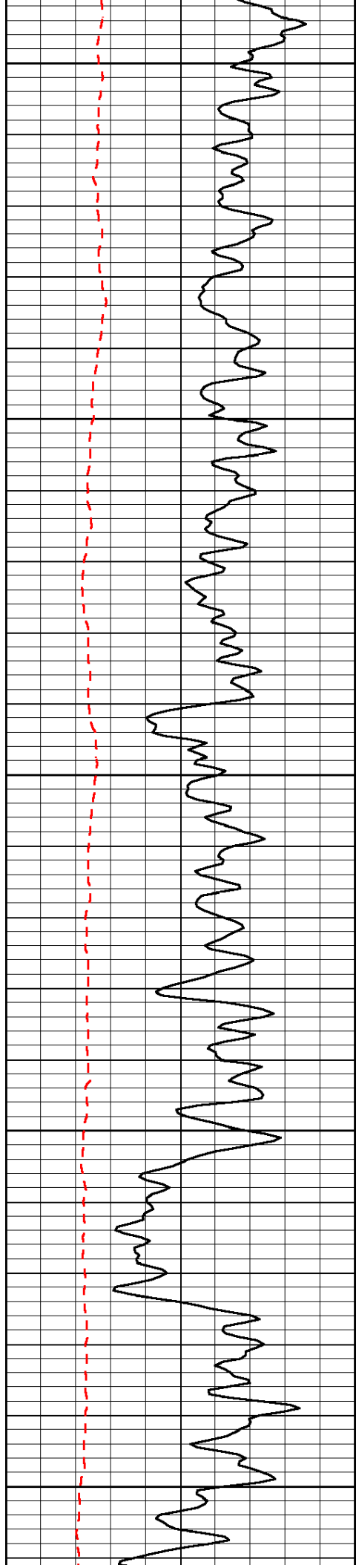
Oakley KS, 13 S to Quail Rd,
 5 W to 390 Rd, 1/2 S, W Into at farm

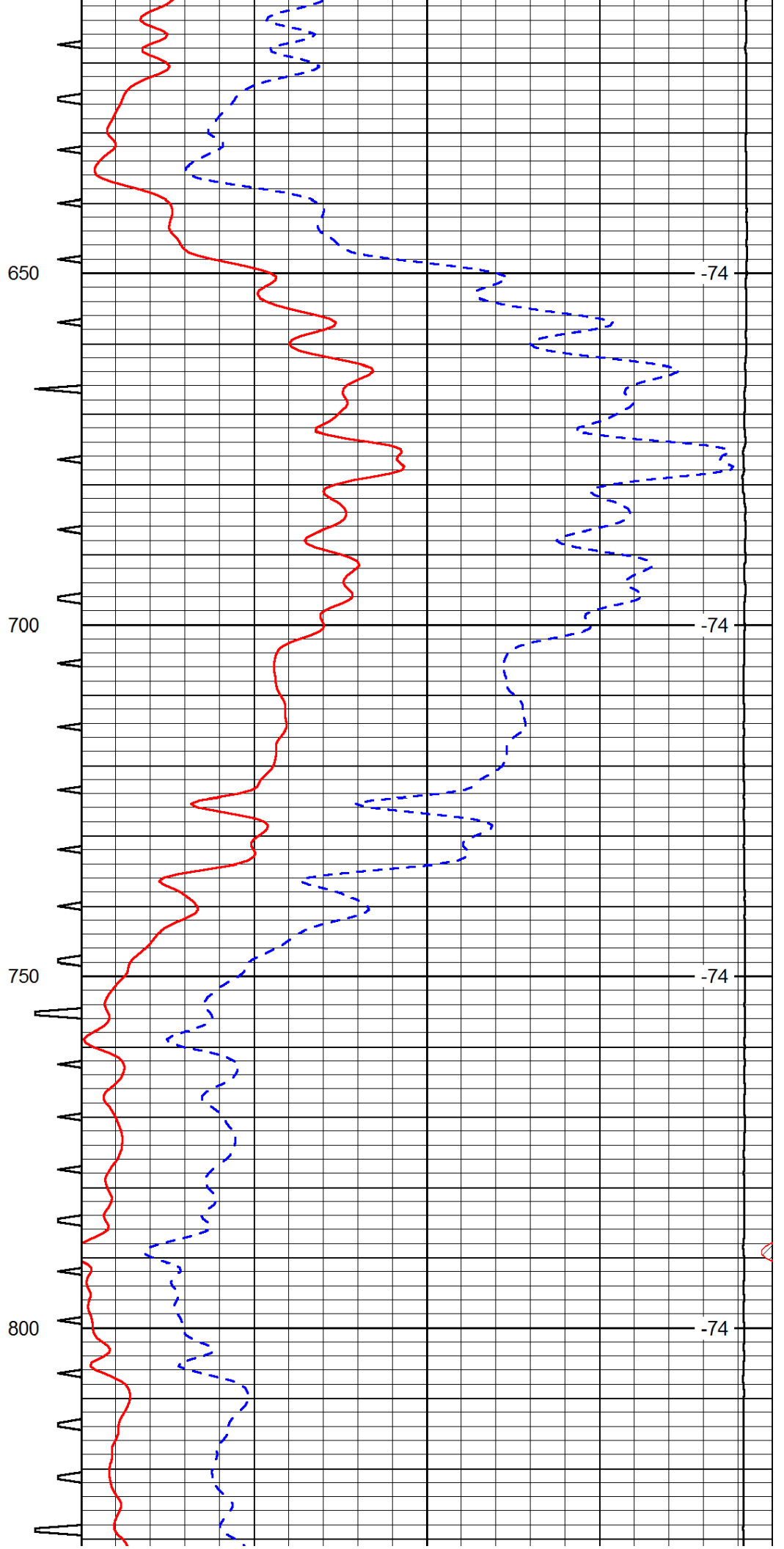
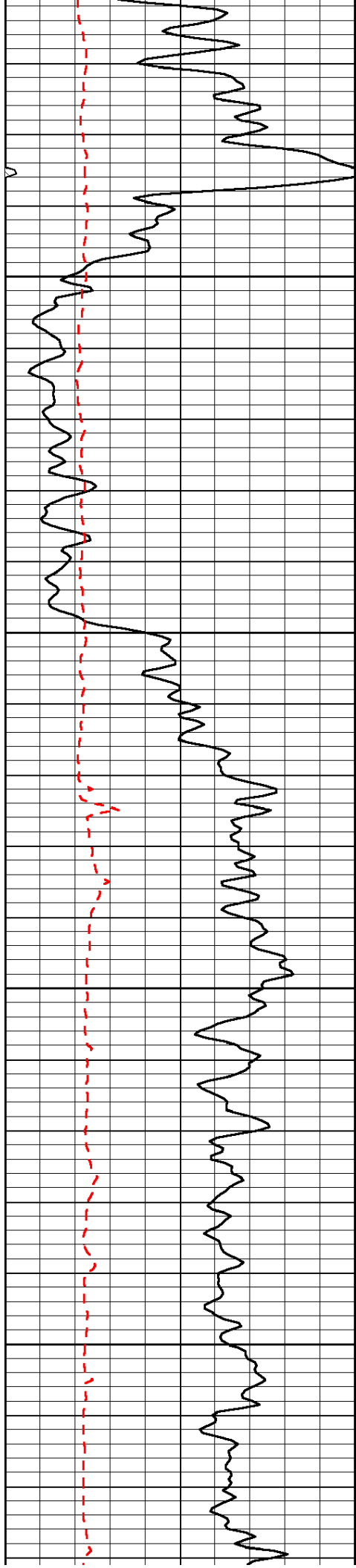
Database File: c:\warrior\data\palomino_stoll-olivia #1\palominohd.db
 Dataset Pathname: rag/palrag2
 Presentation Format: sonic
 Dataset Creation: Mon Jan 21 11:07:35 2013
 Charted by: Depth in Feet scaled 1:240

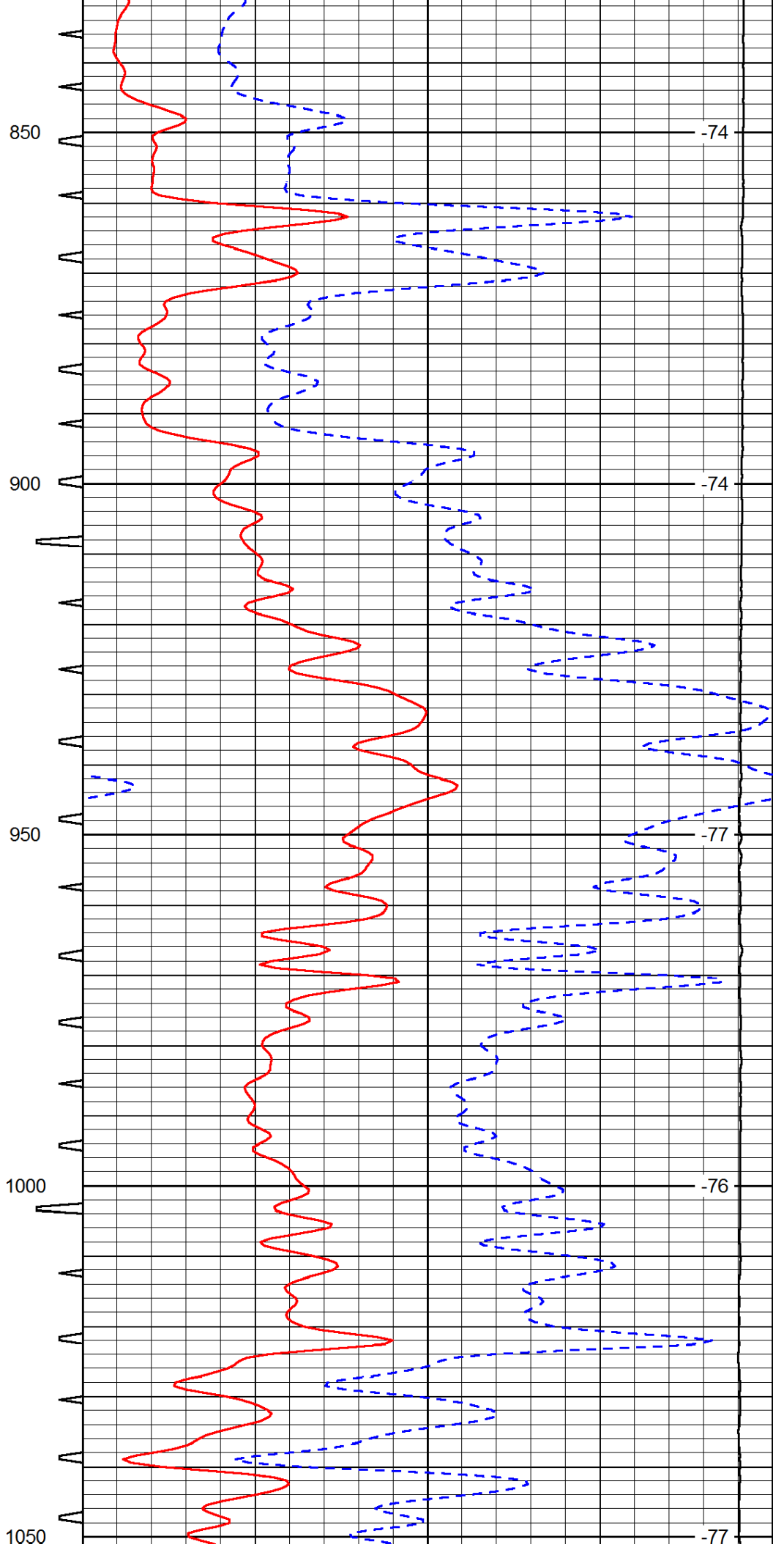
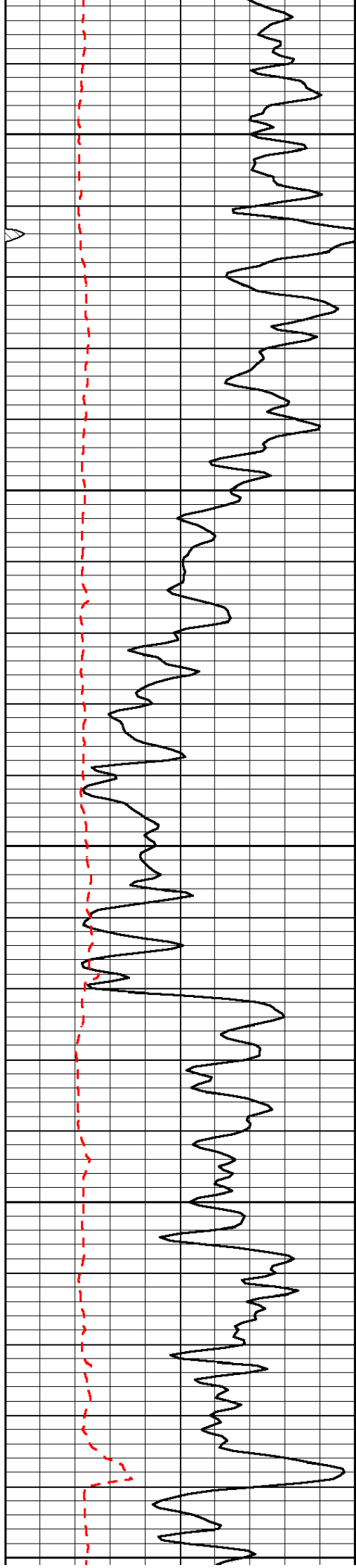
0	Gamma Ray	150	Sonic Int	140	Delta Time (usec/ft)	40
150	Gamma Ray	300	5	0	SPOR	-10
6	scal (GAPI)	16		15000	LTEN (lb)	0

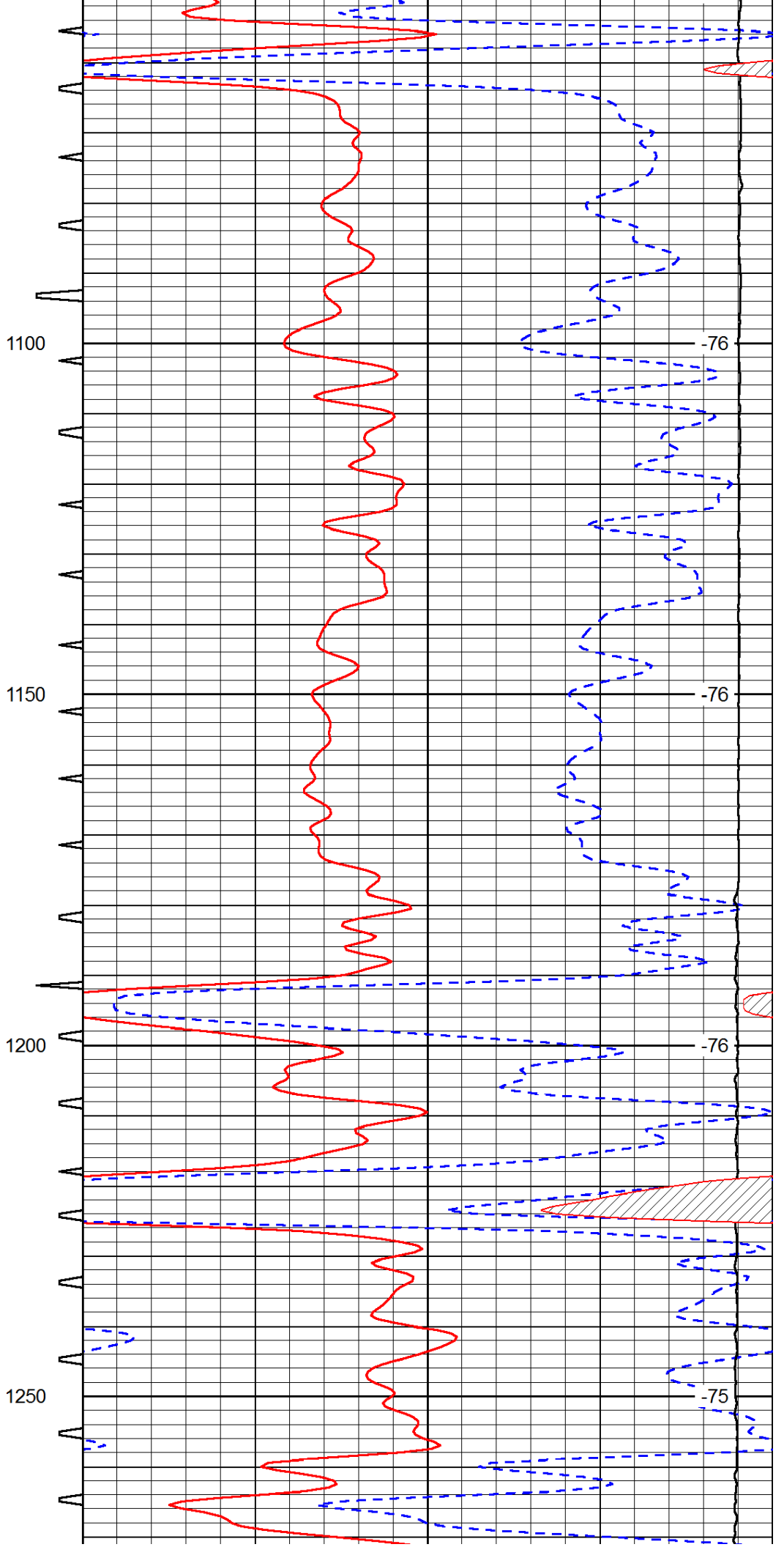
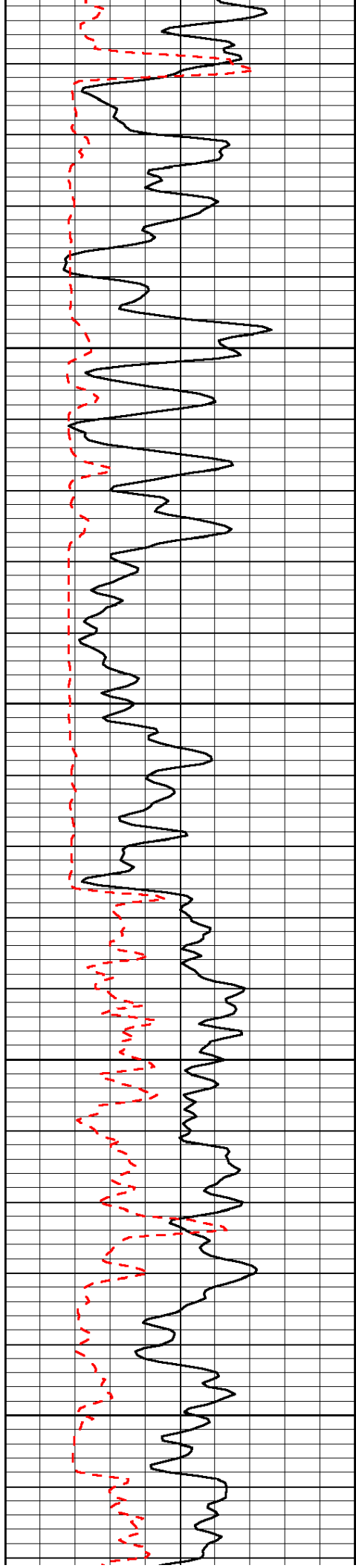
LSPD

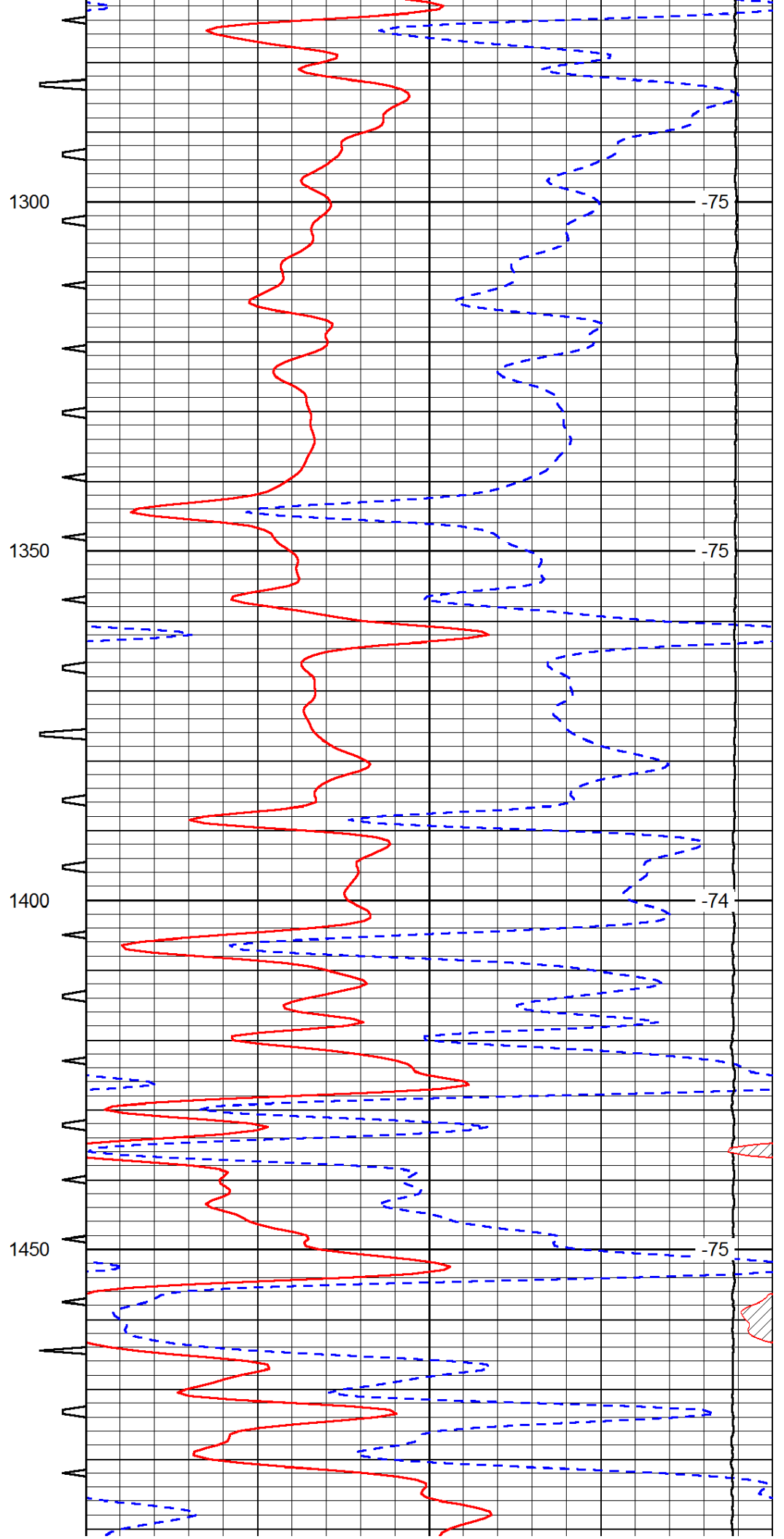
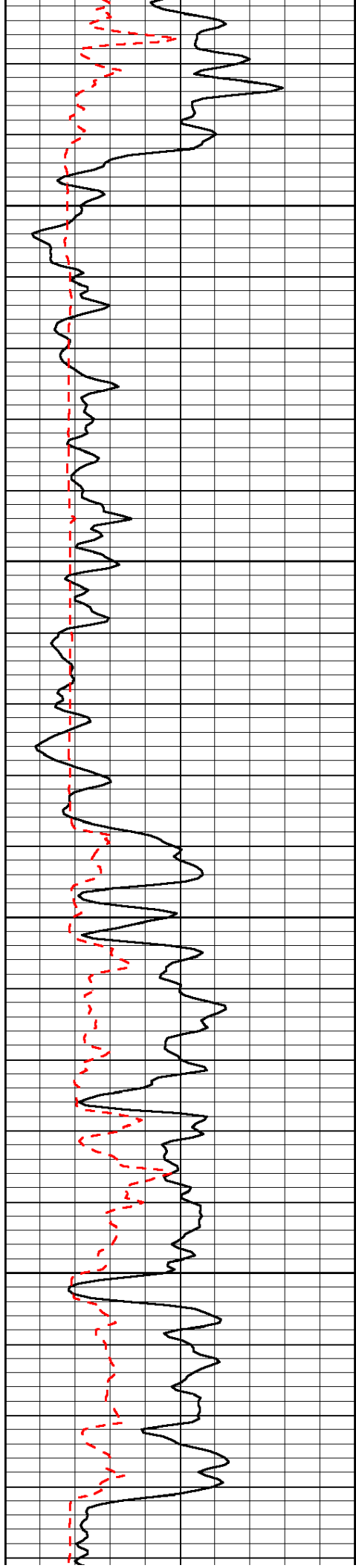


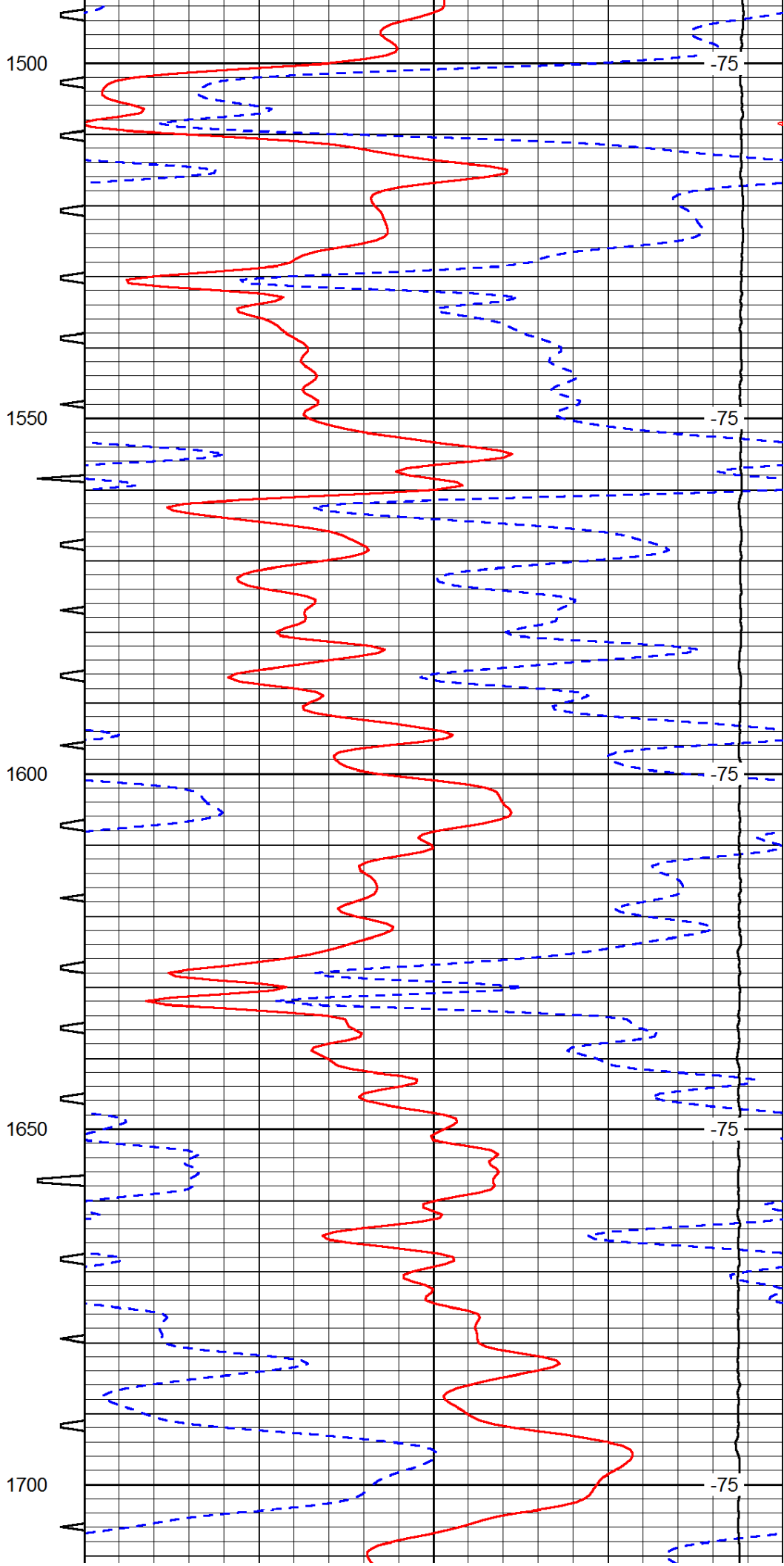
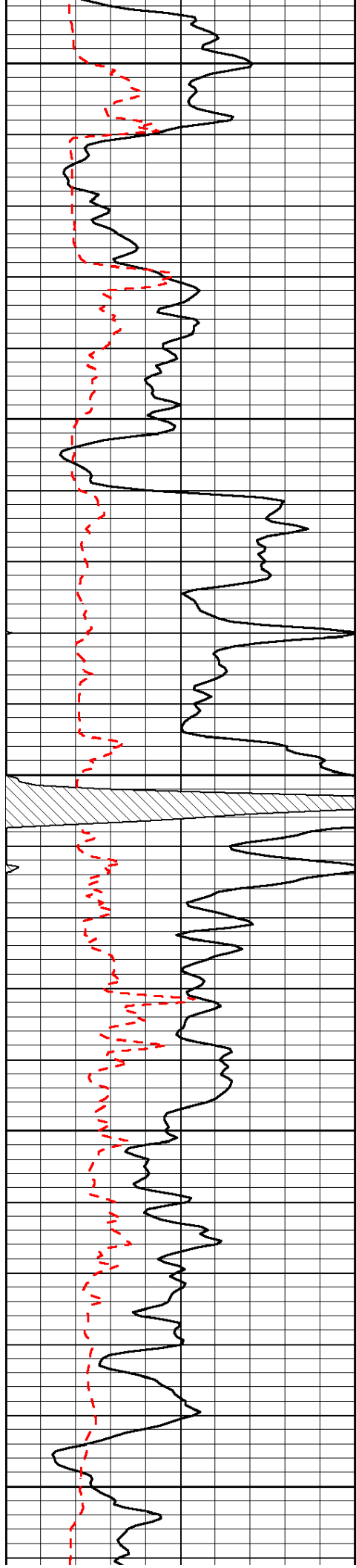


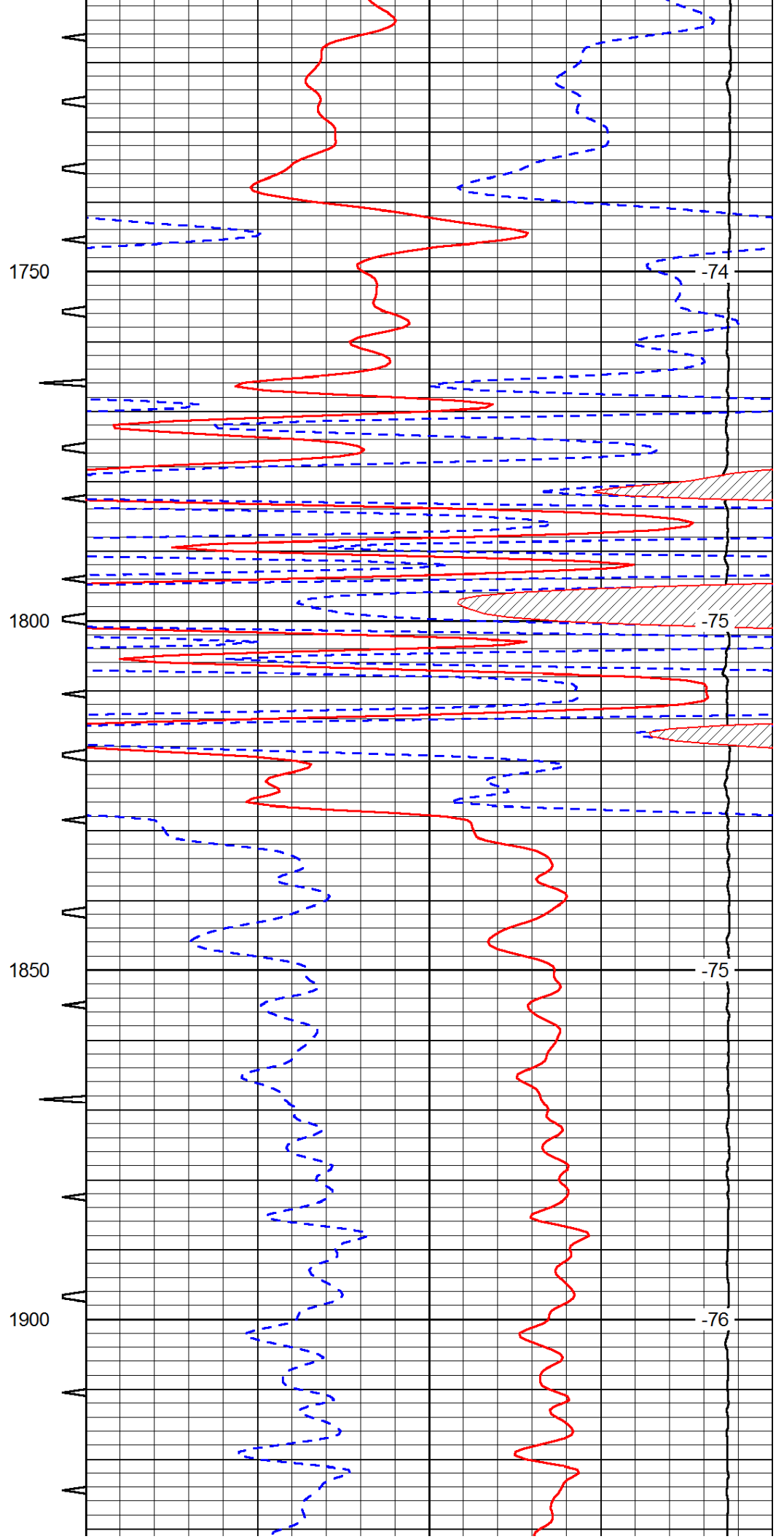
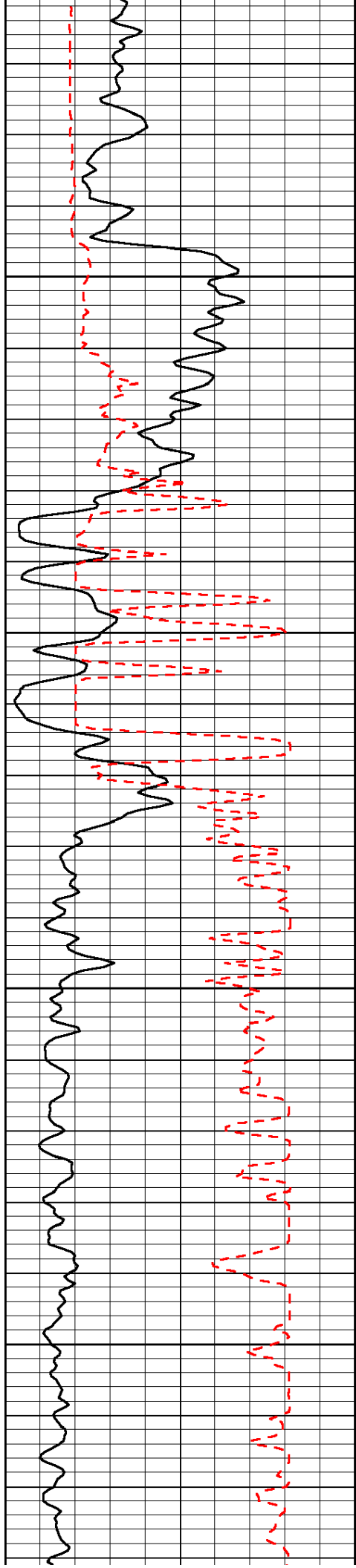


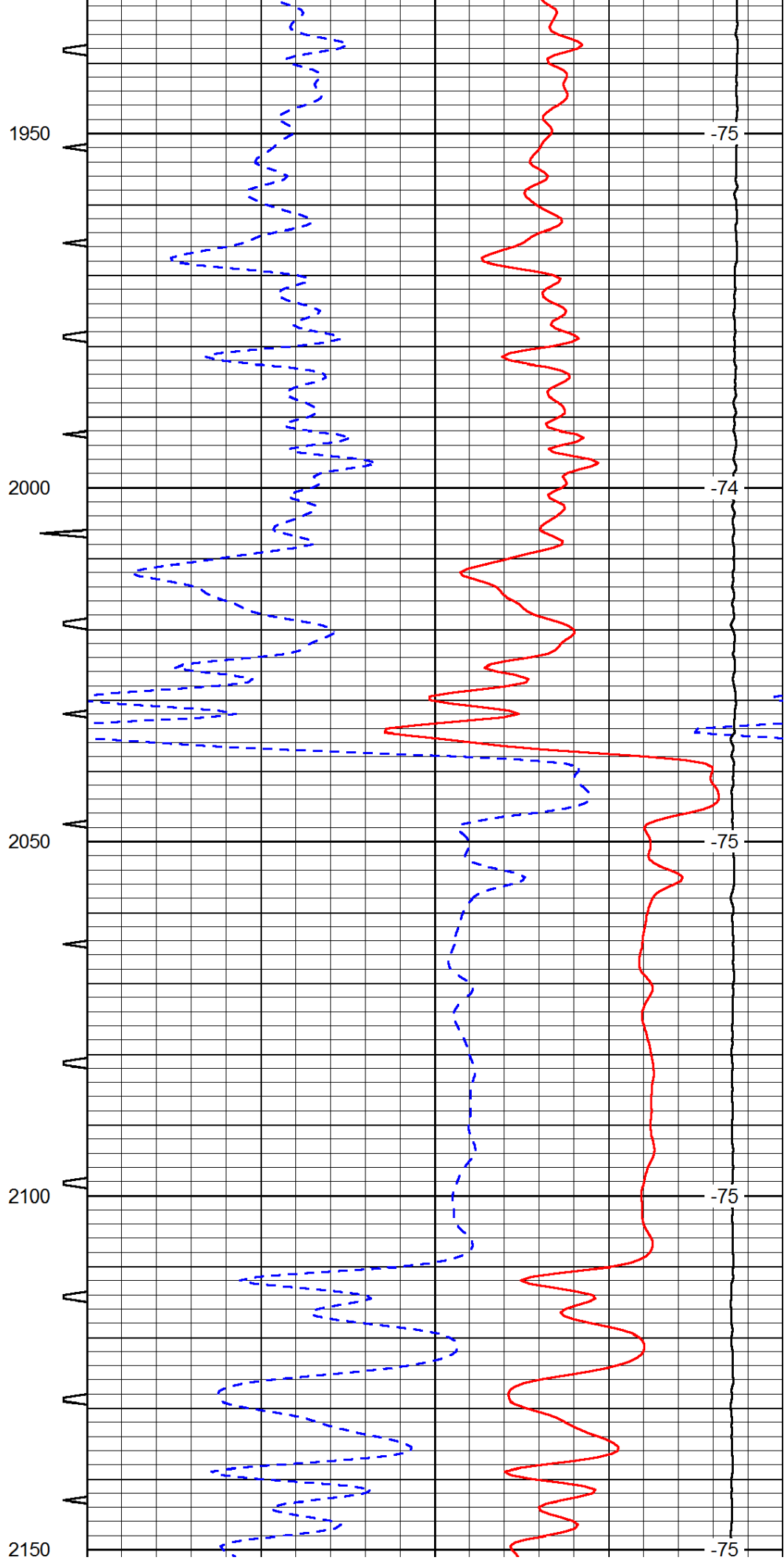
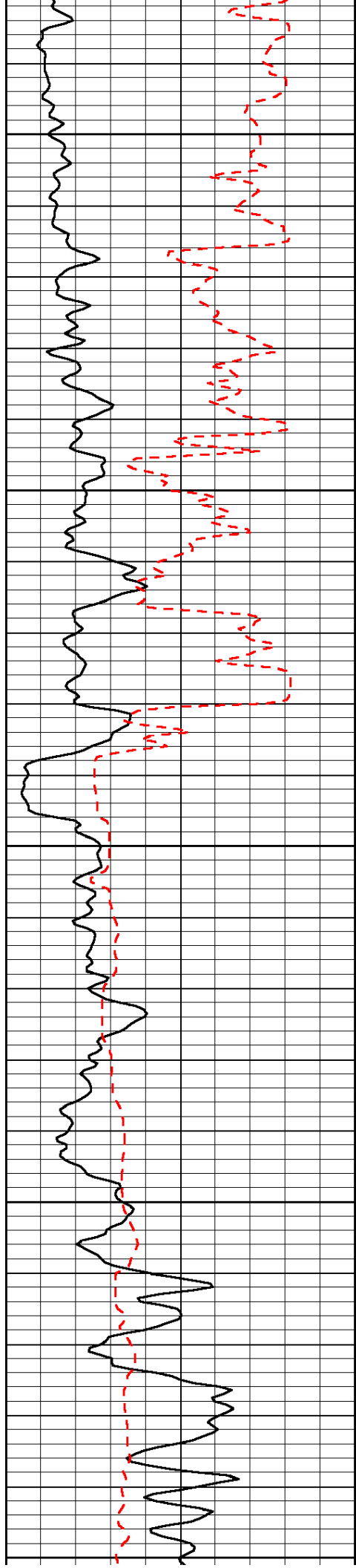


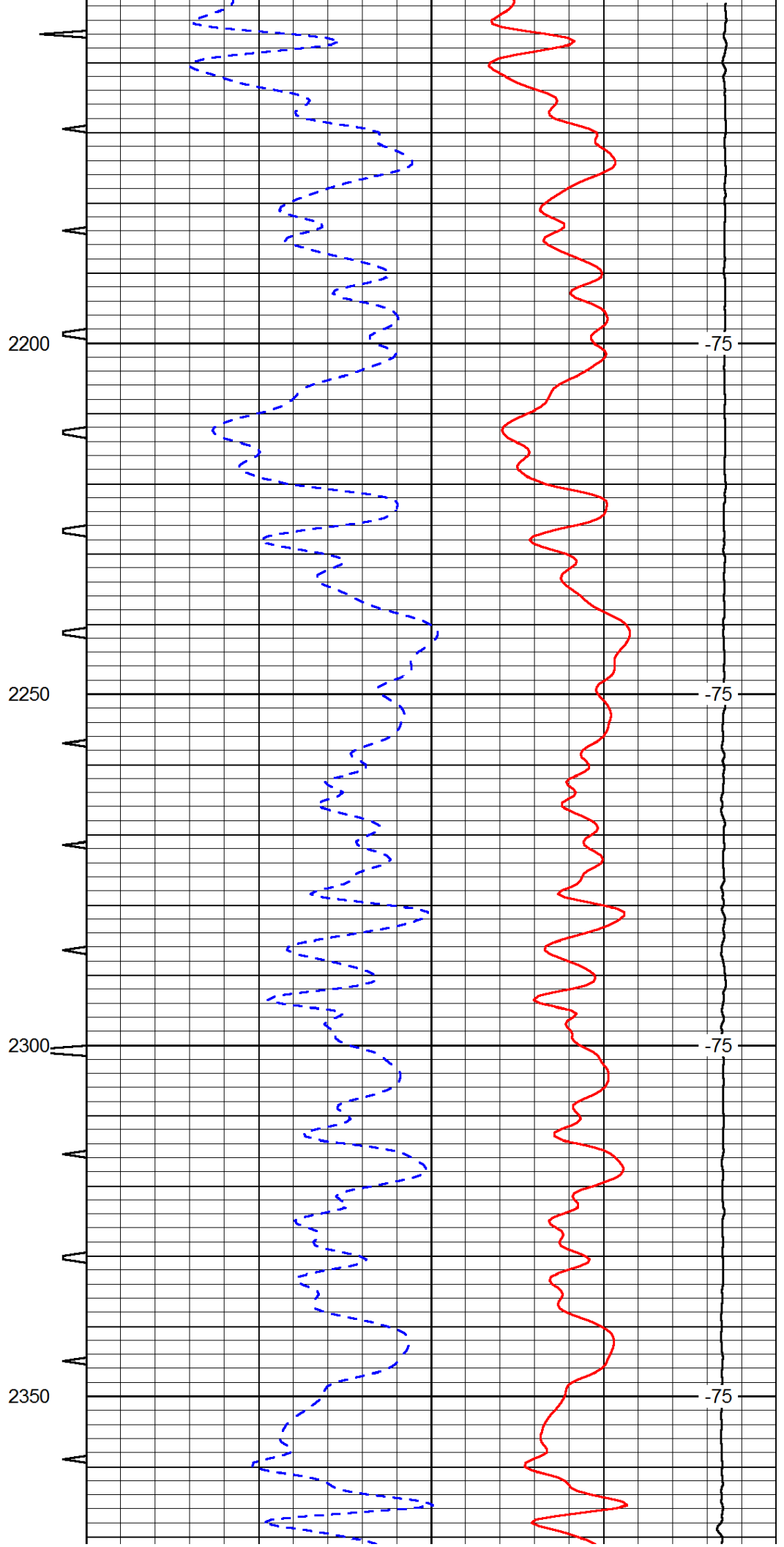
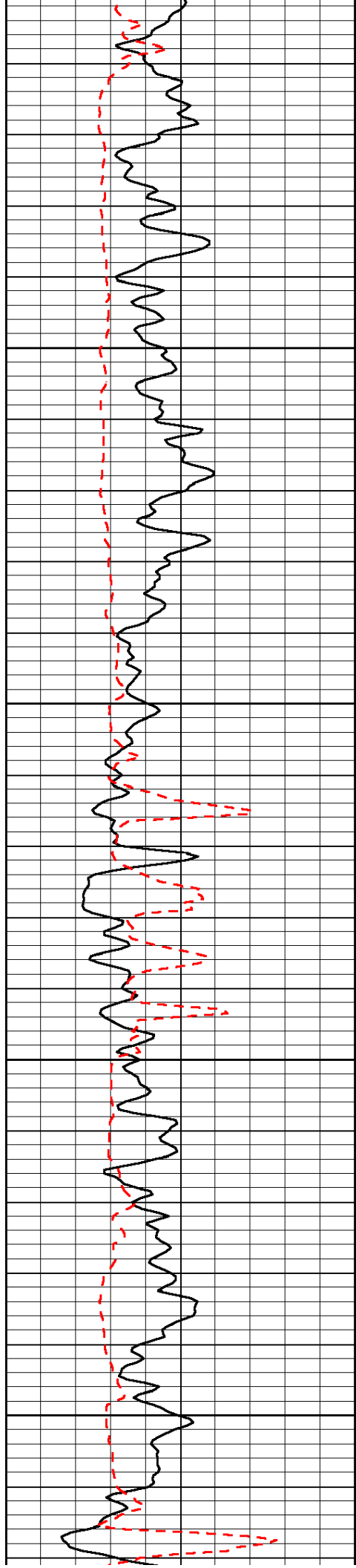


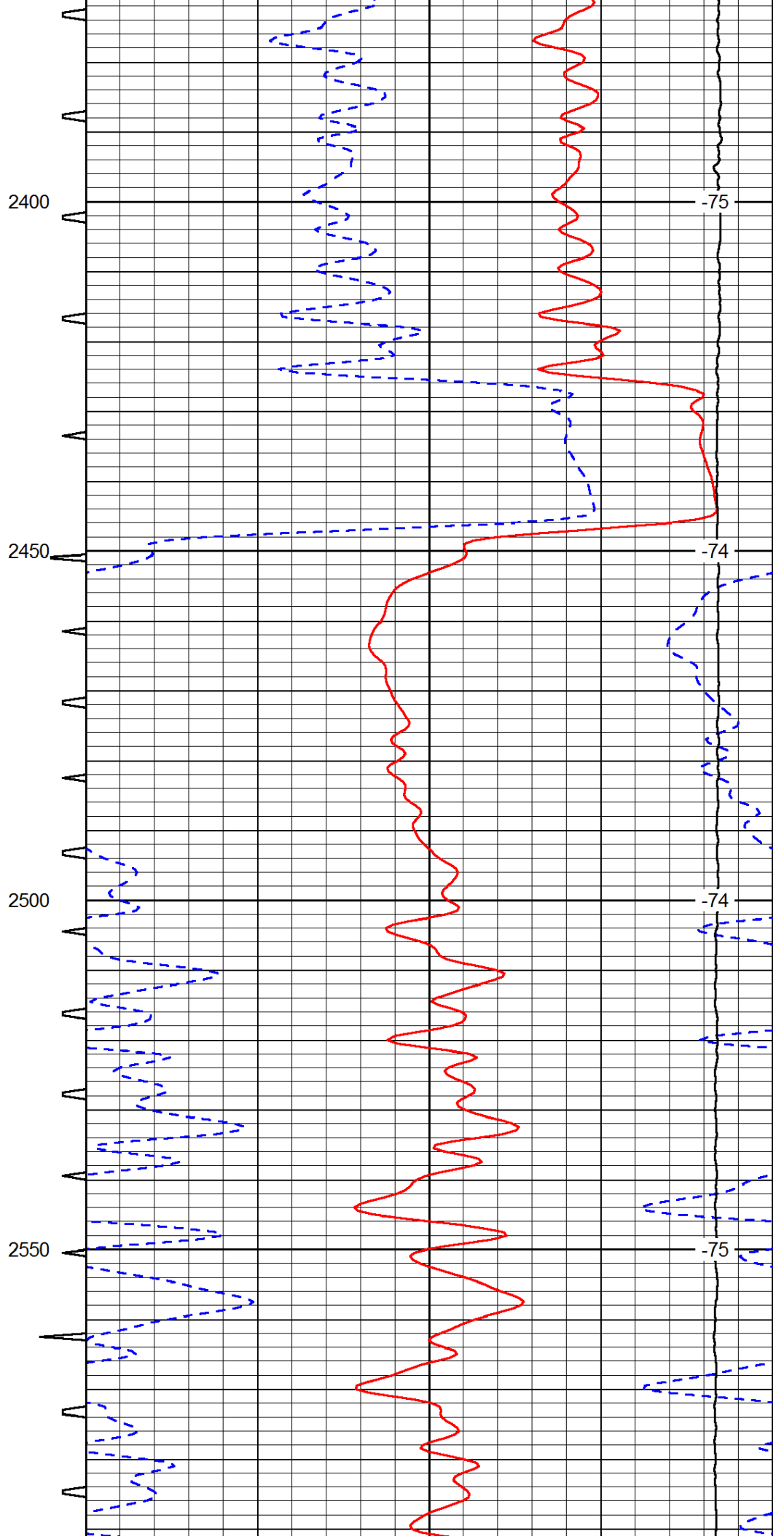
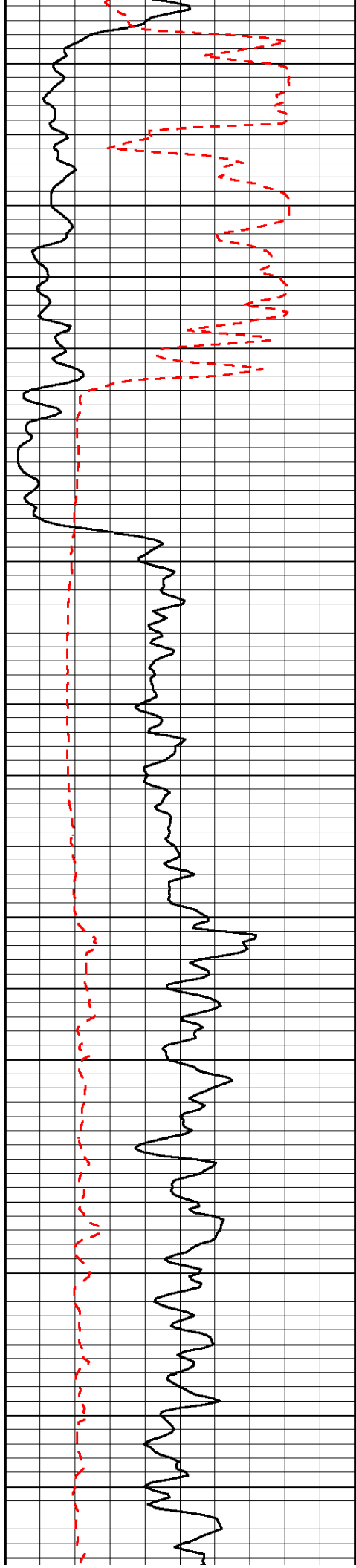


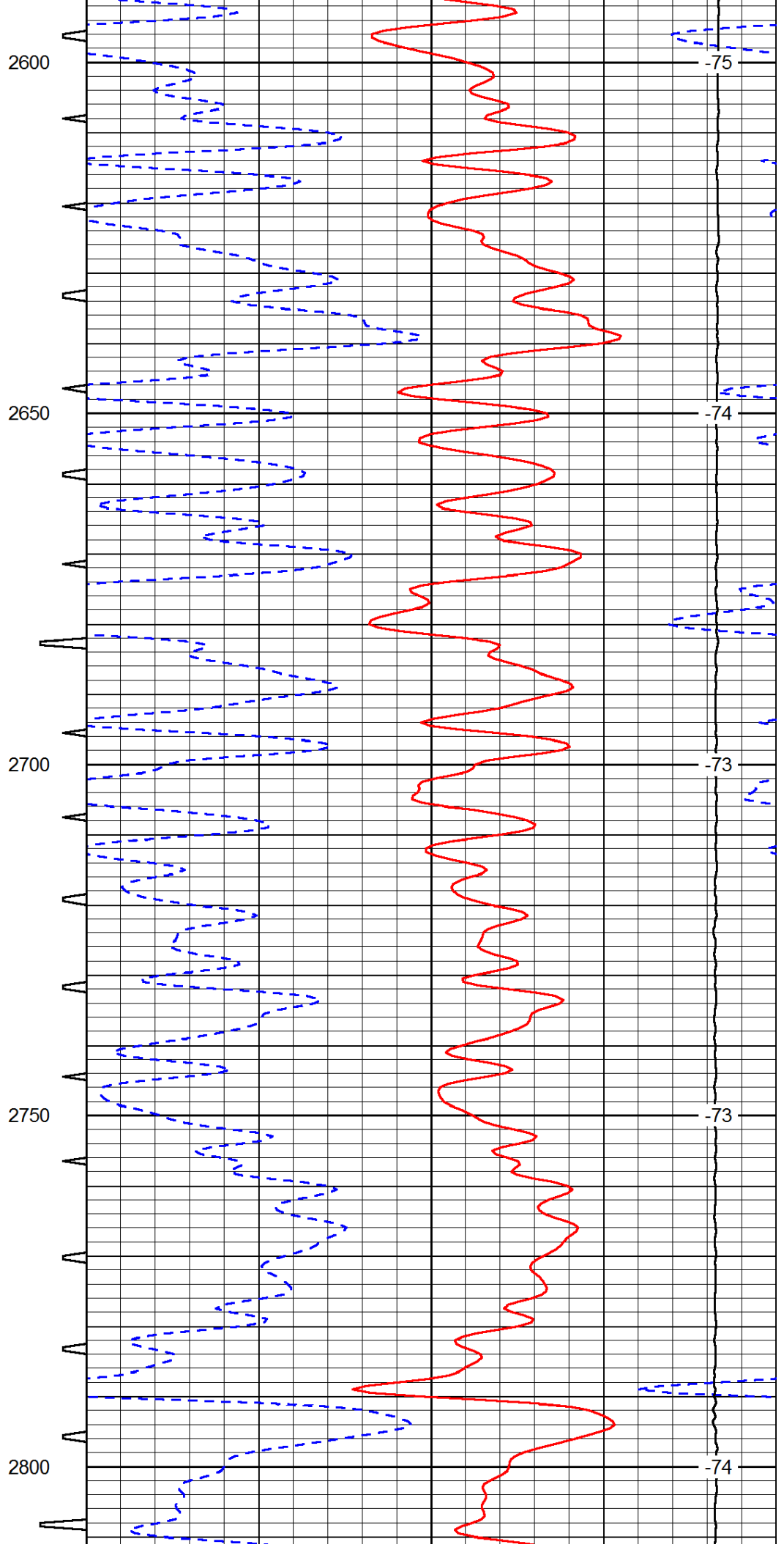
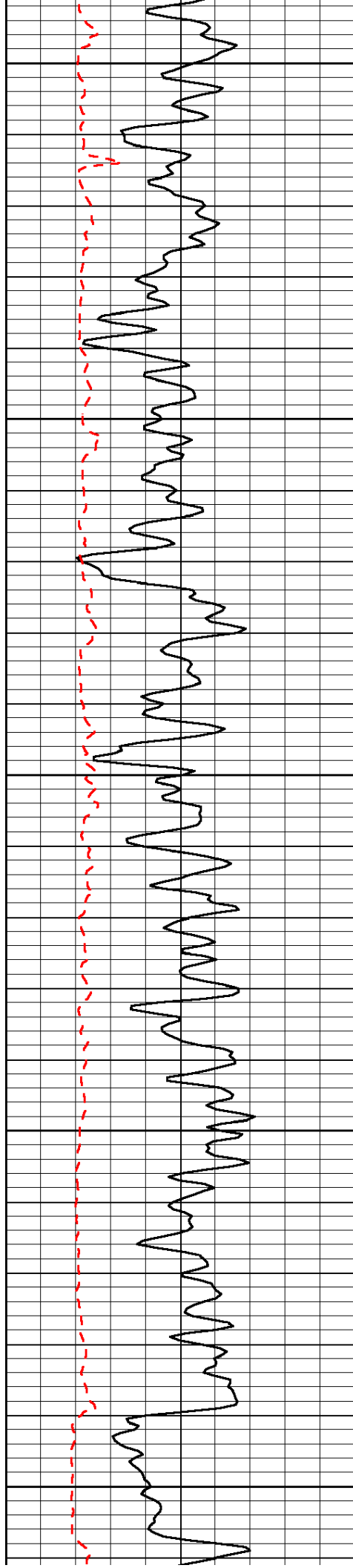


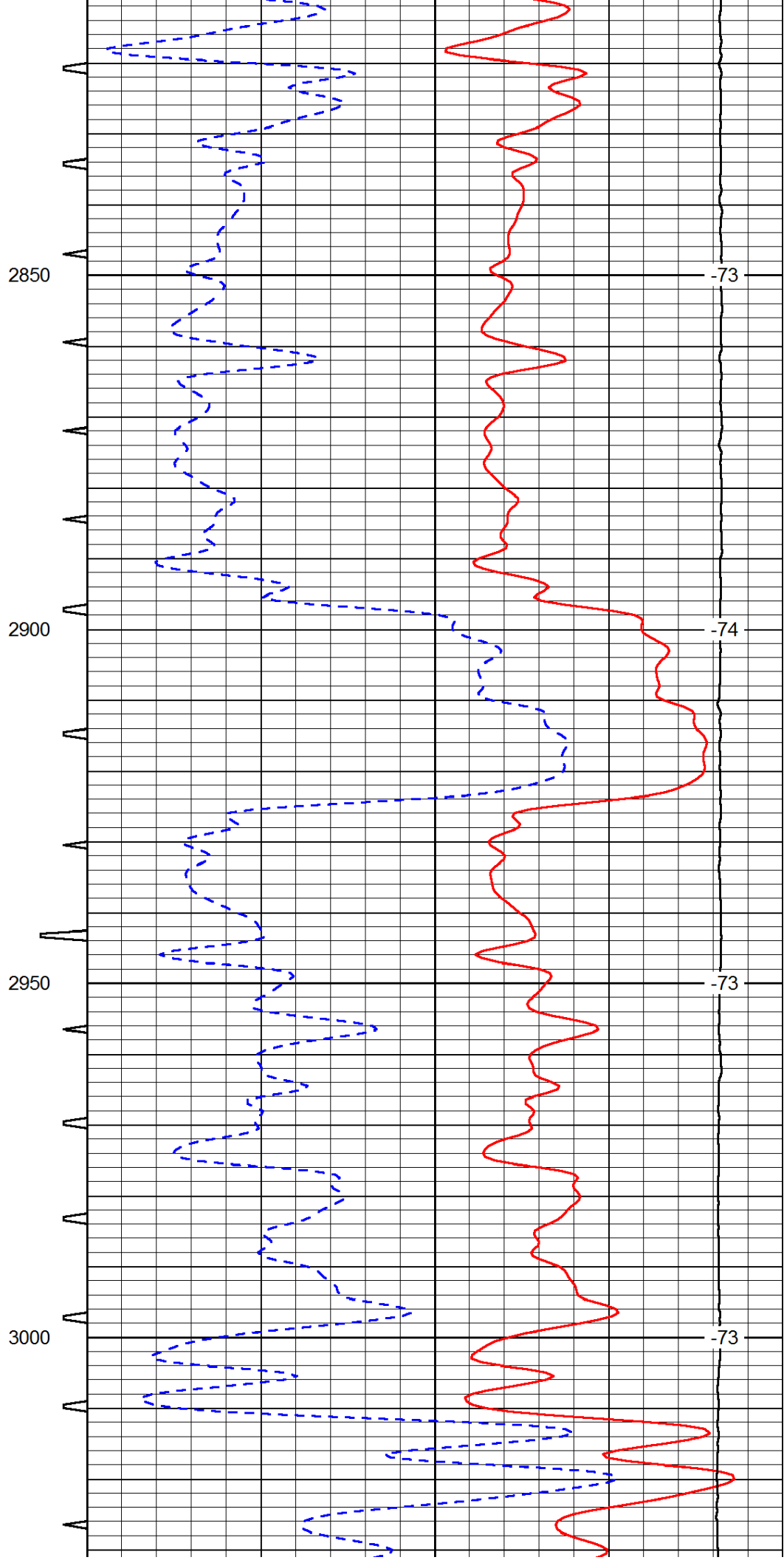
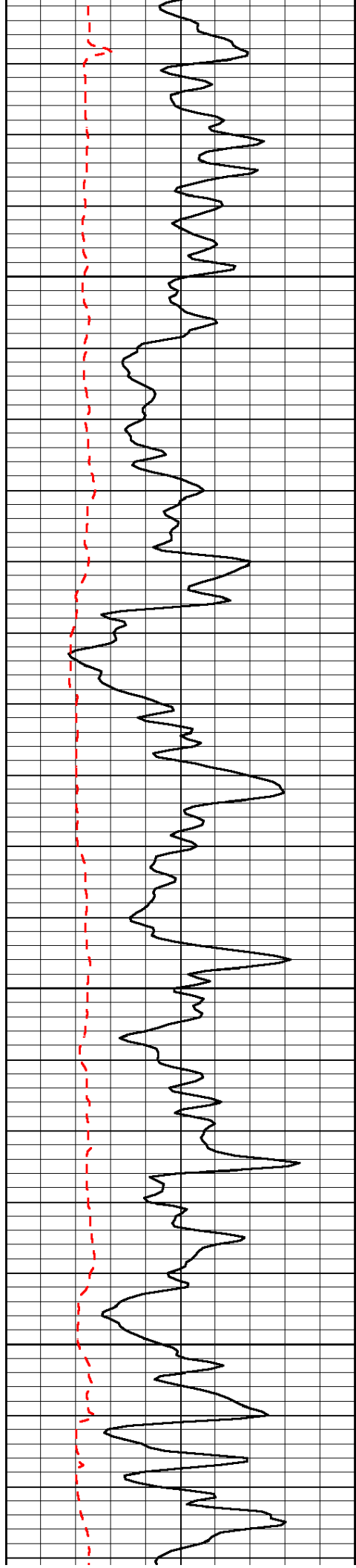


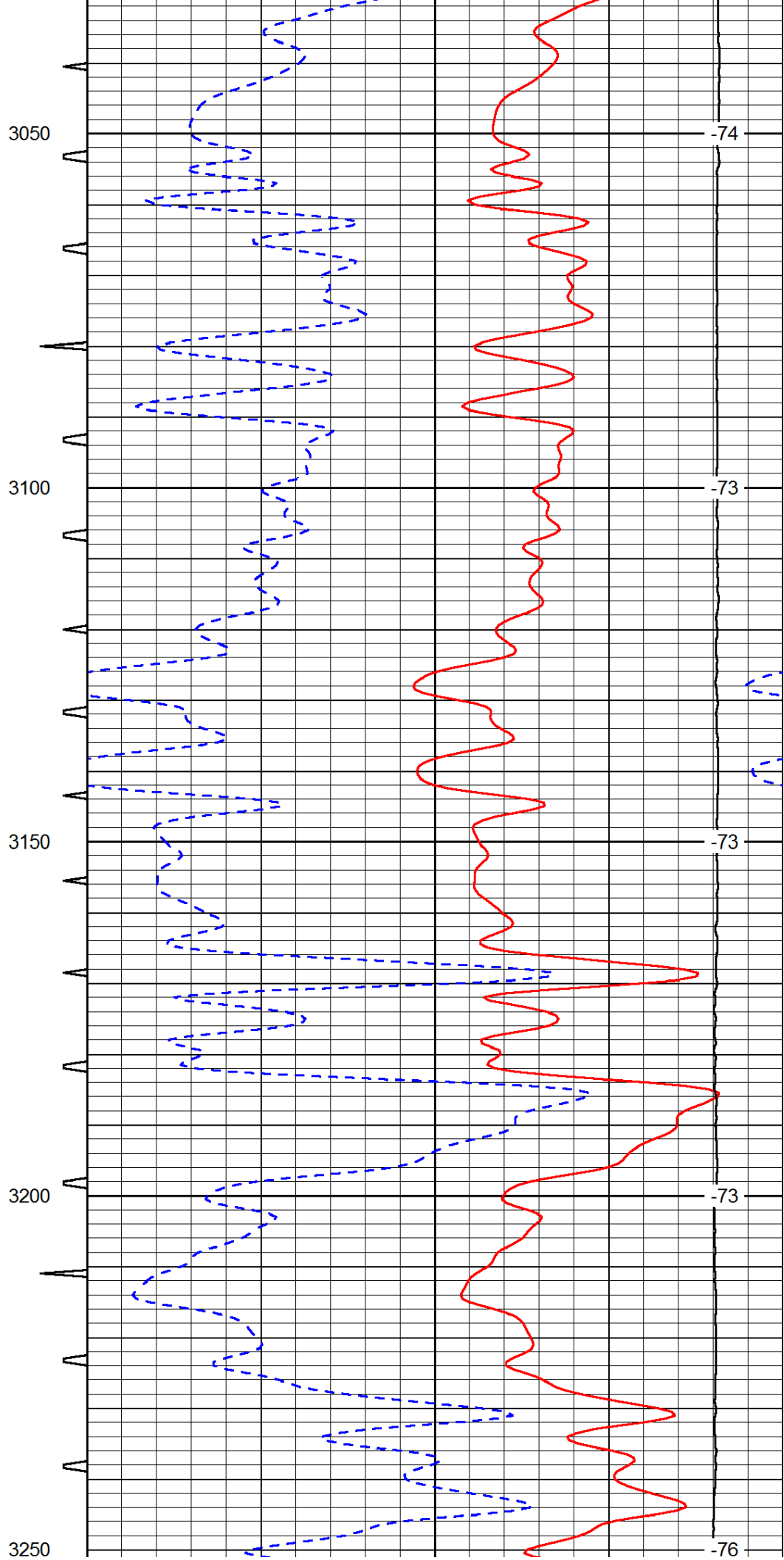
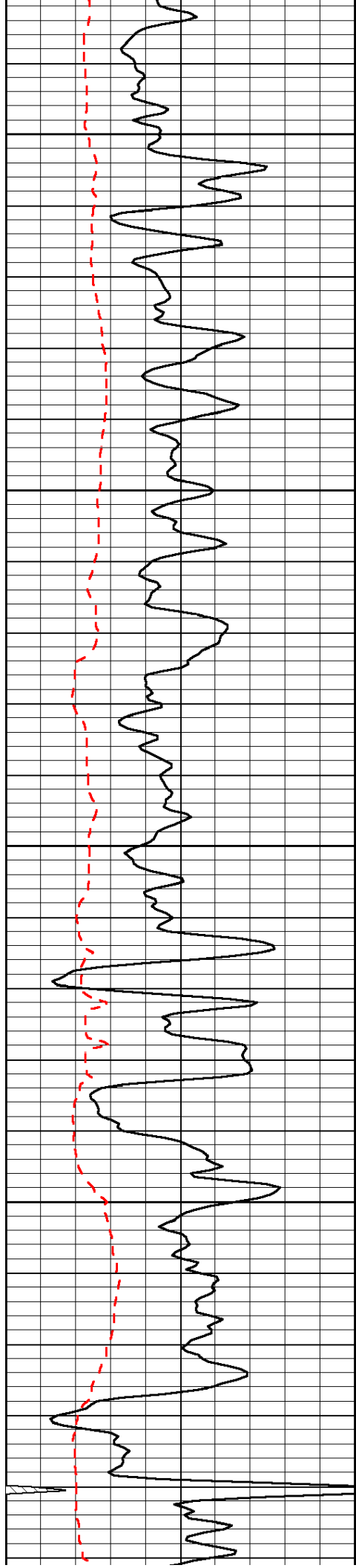


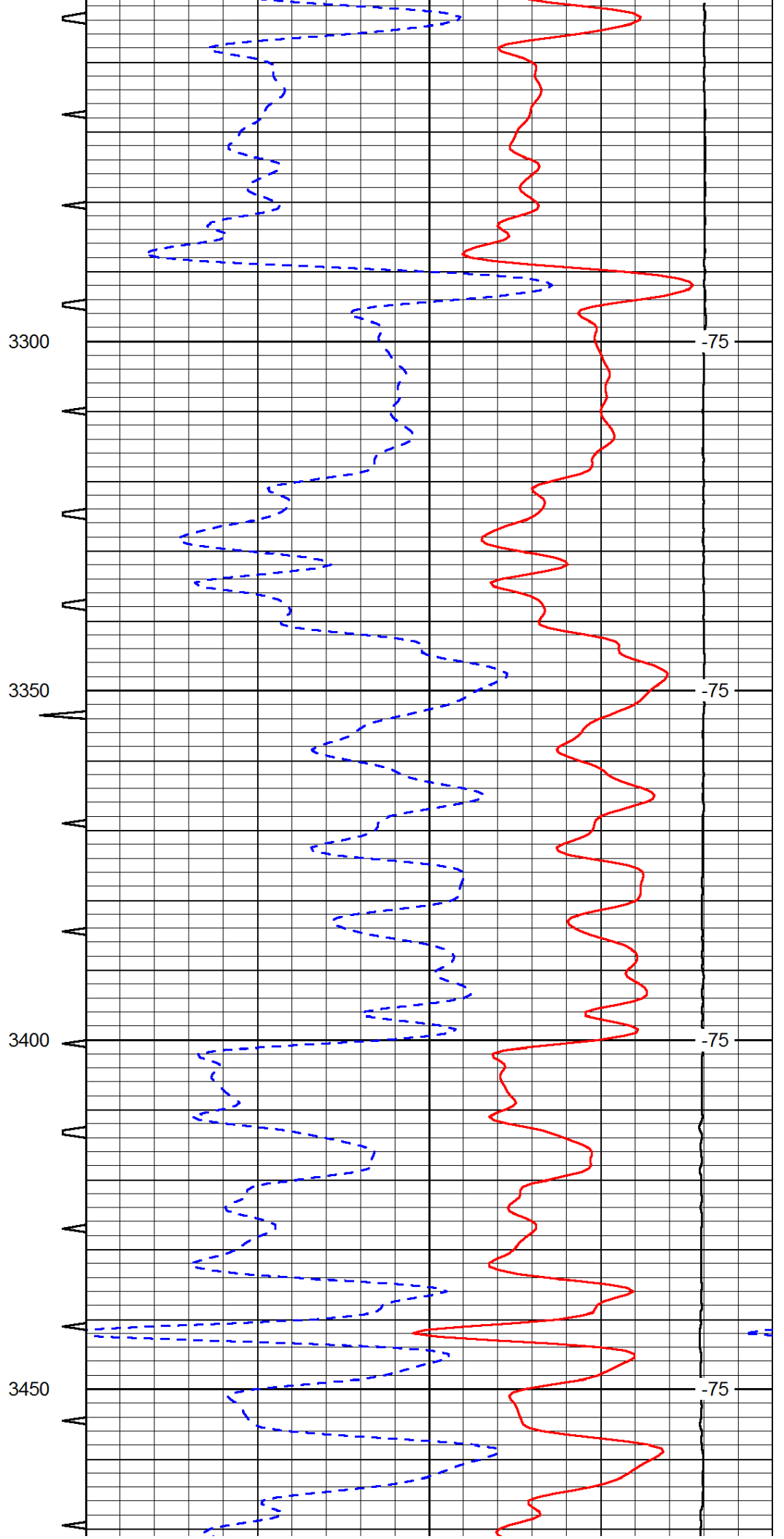
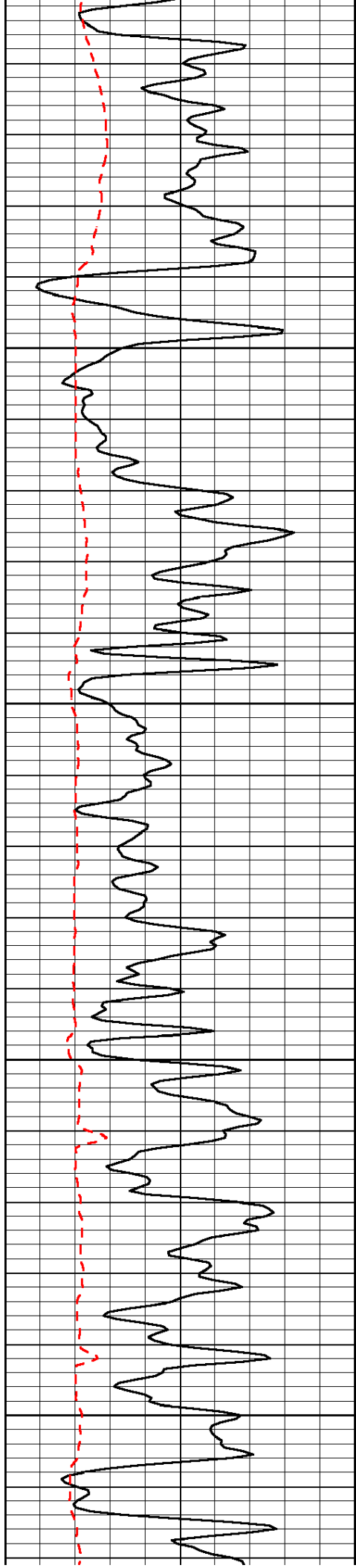


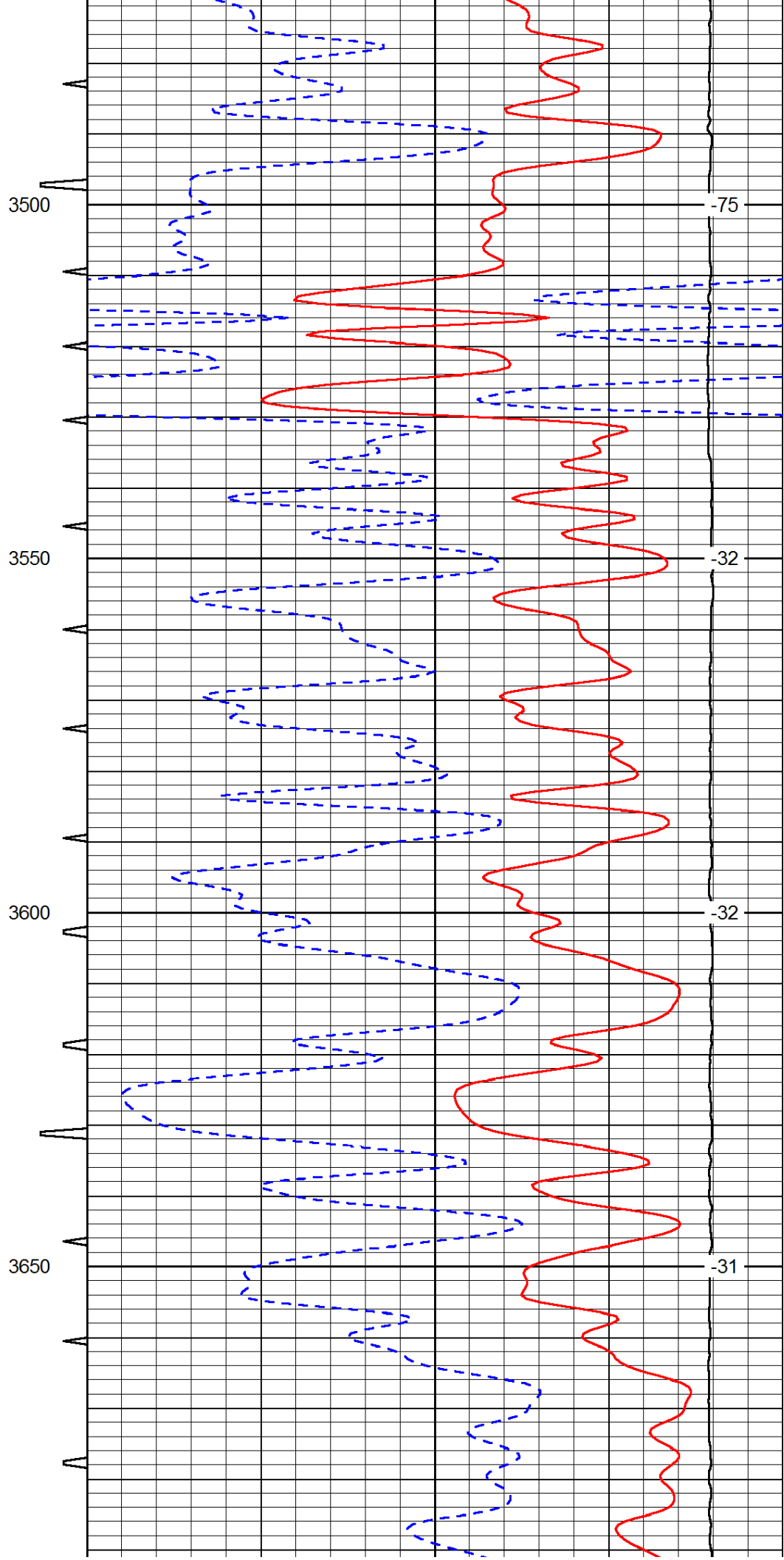
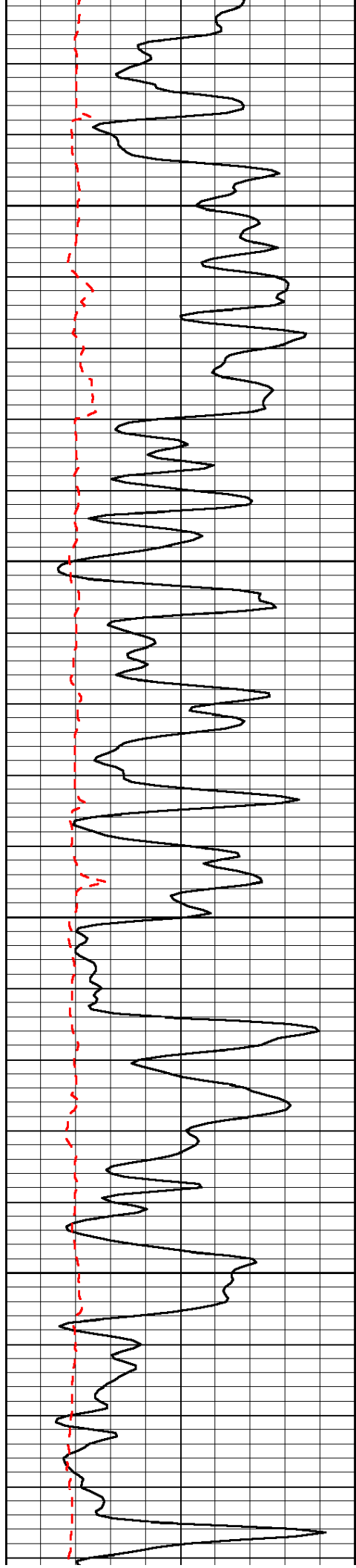


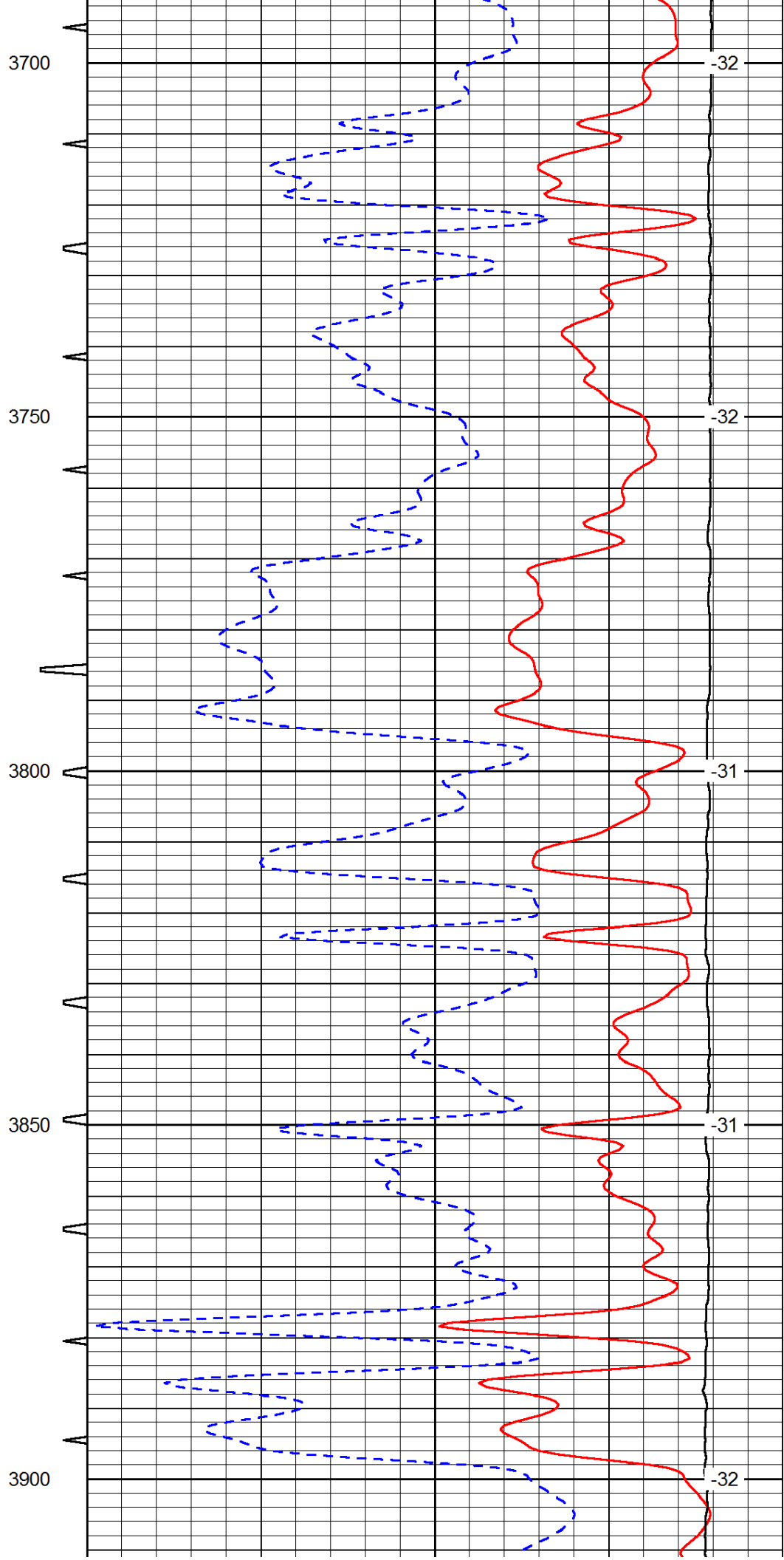
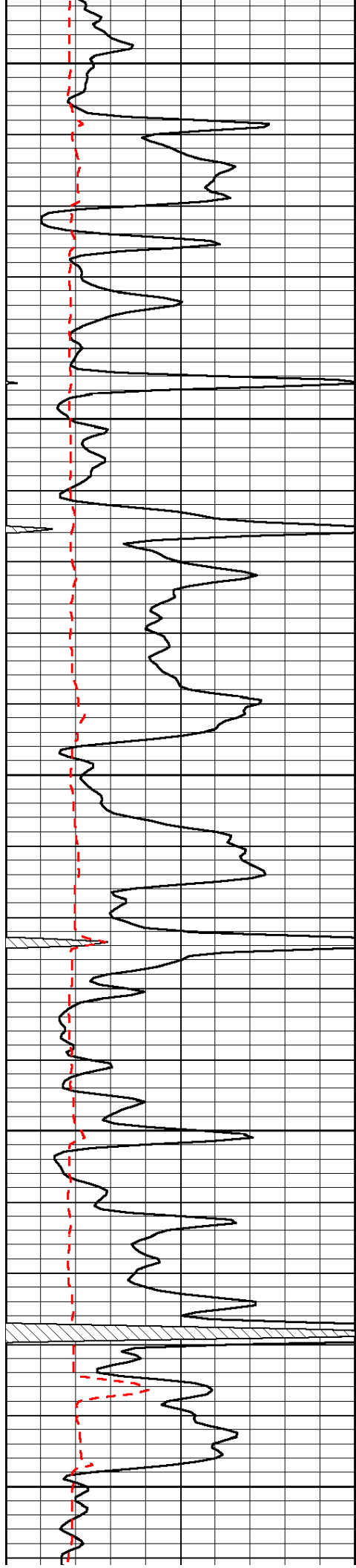


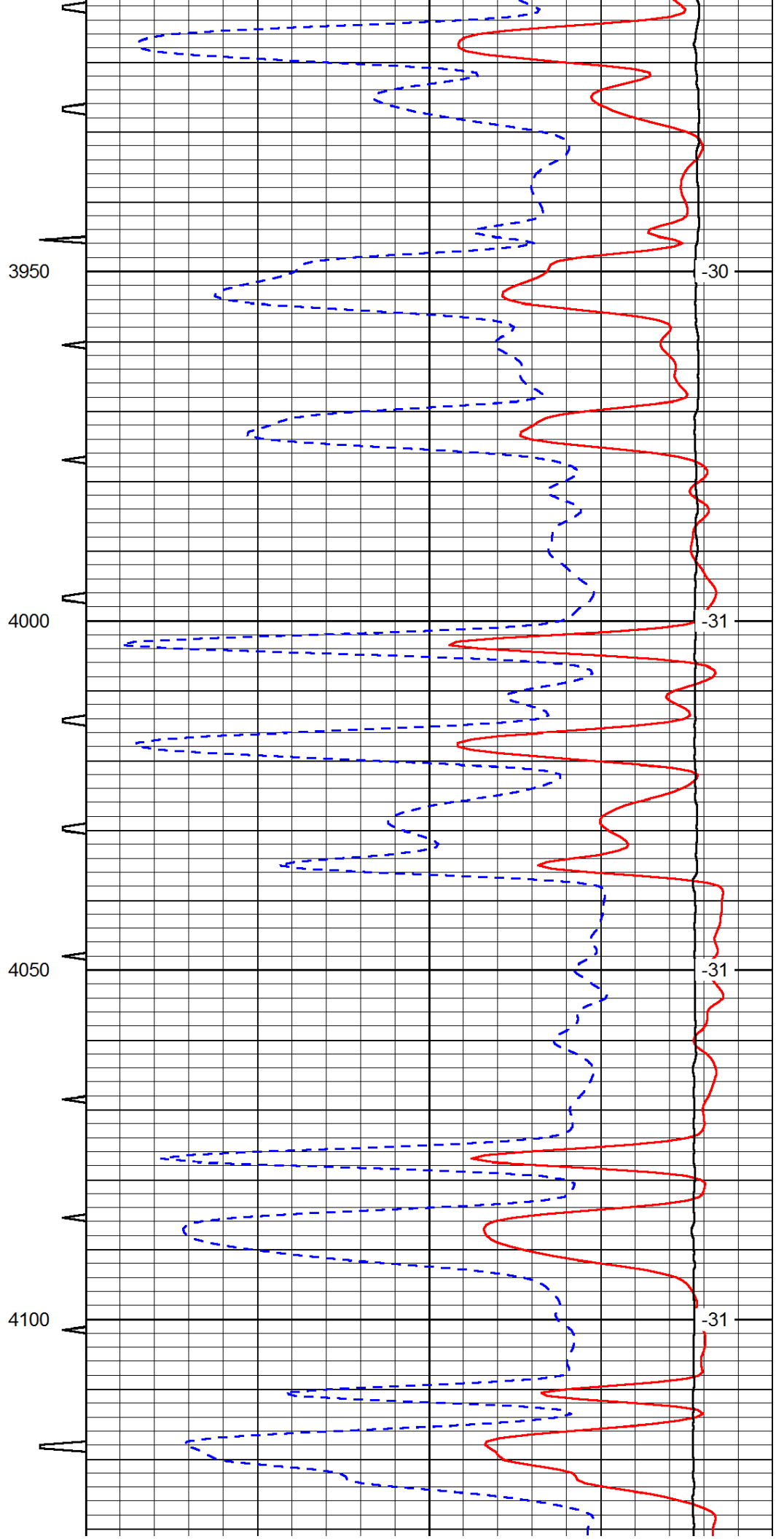
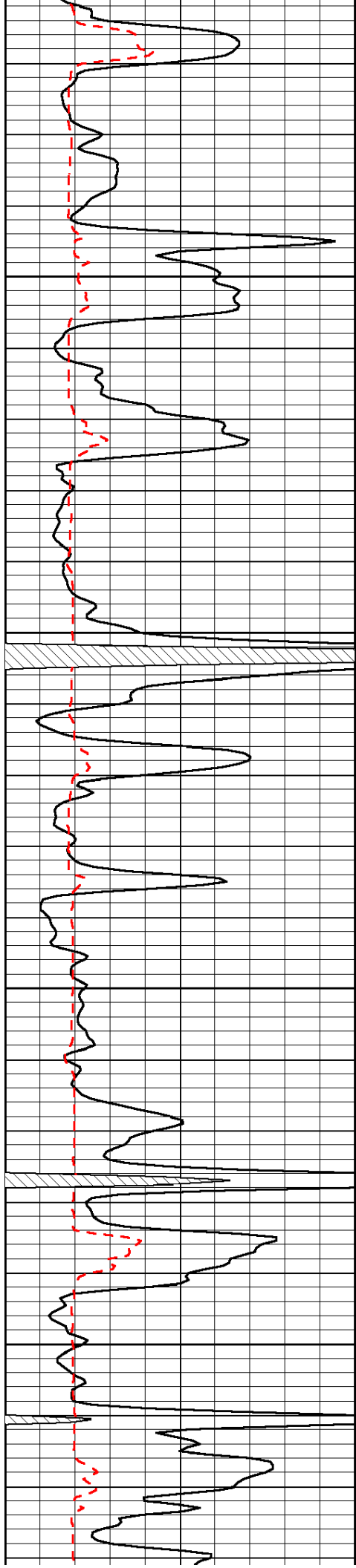


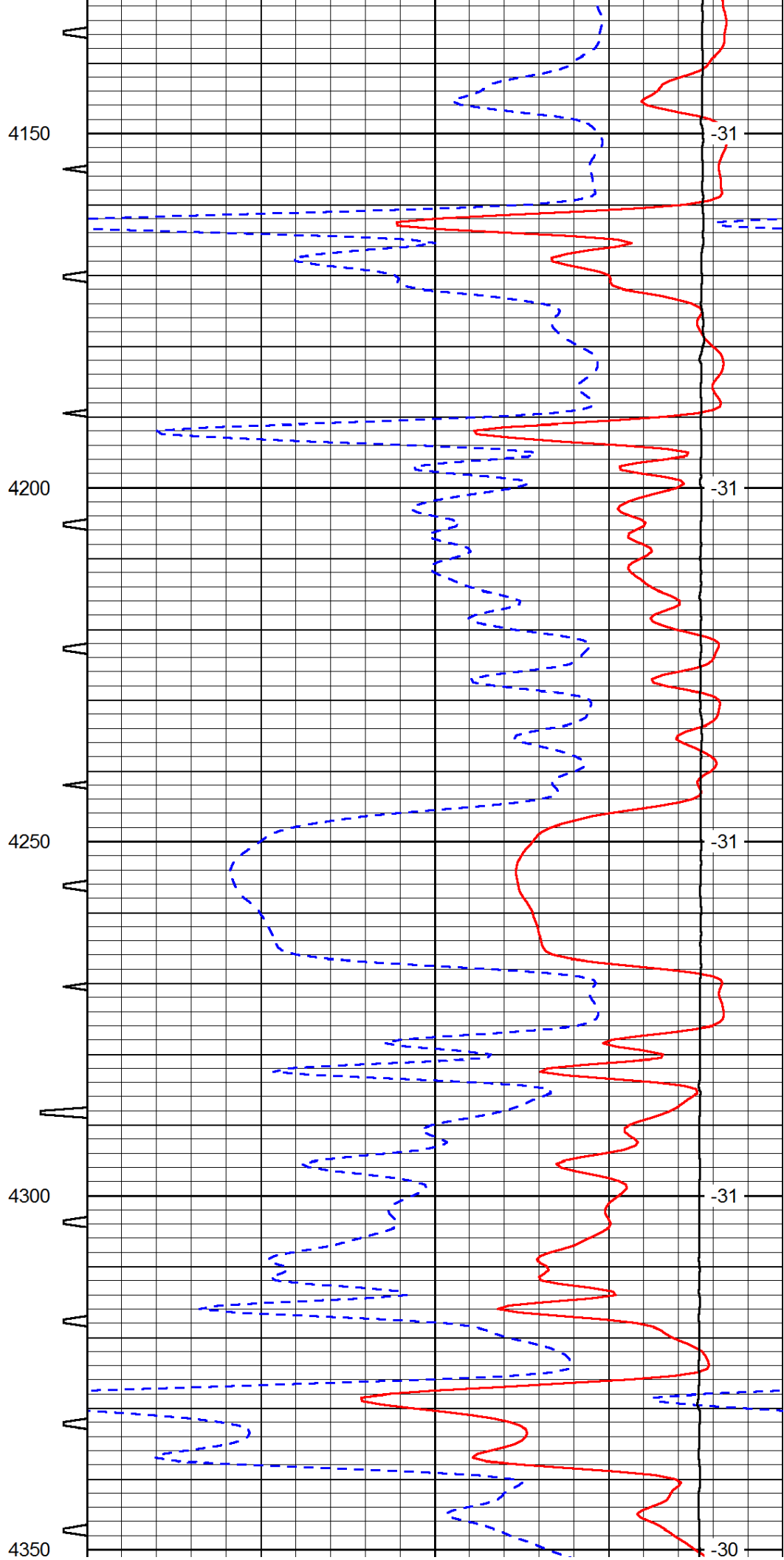
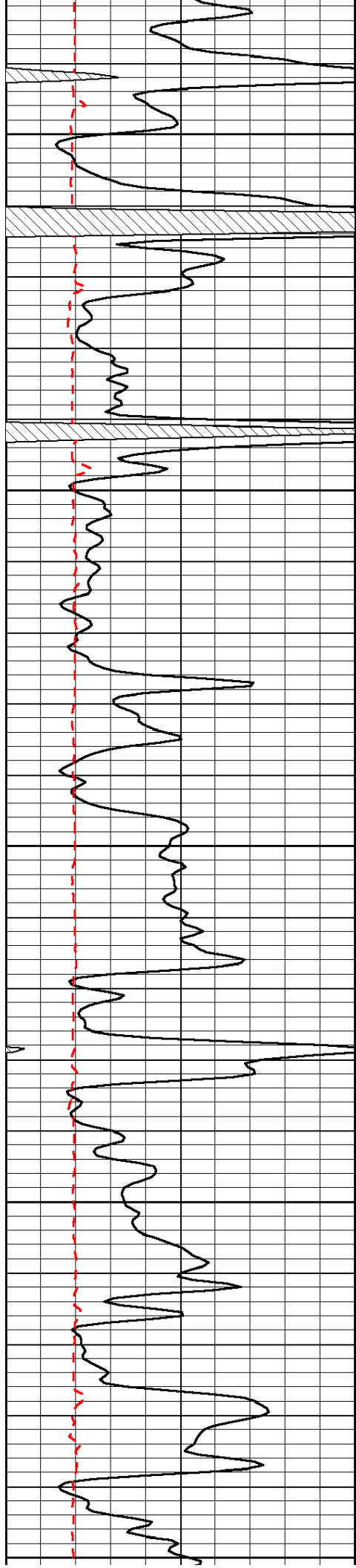


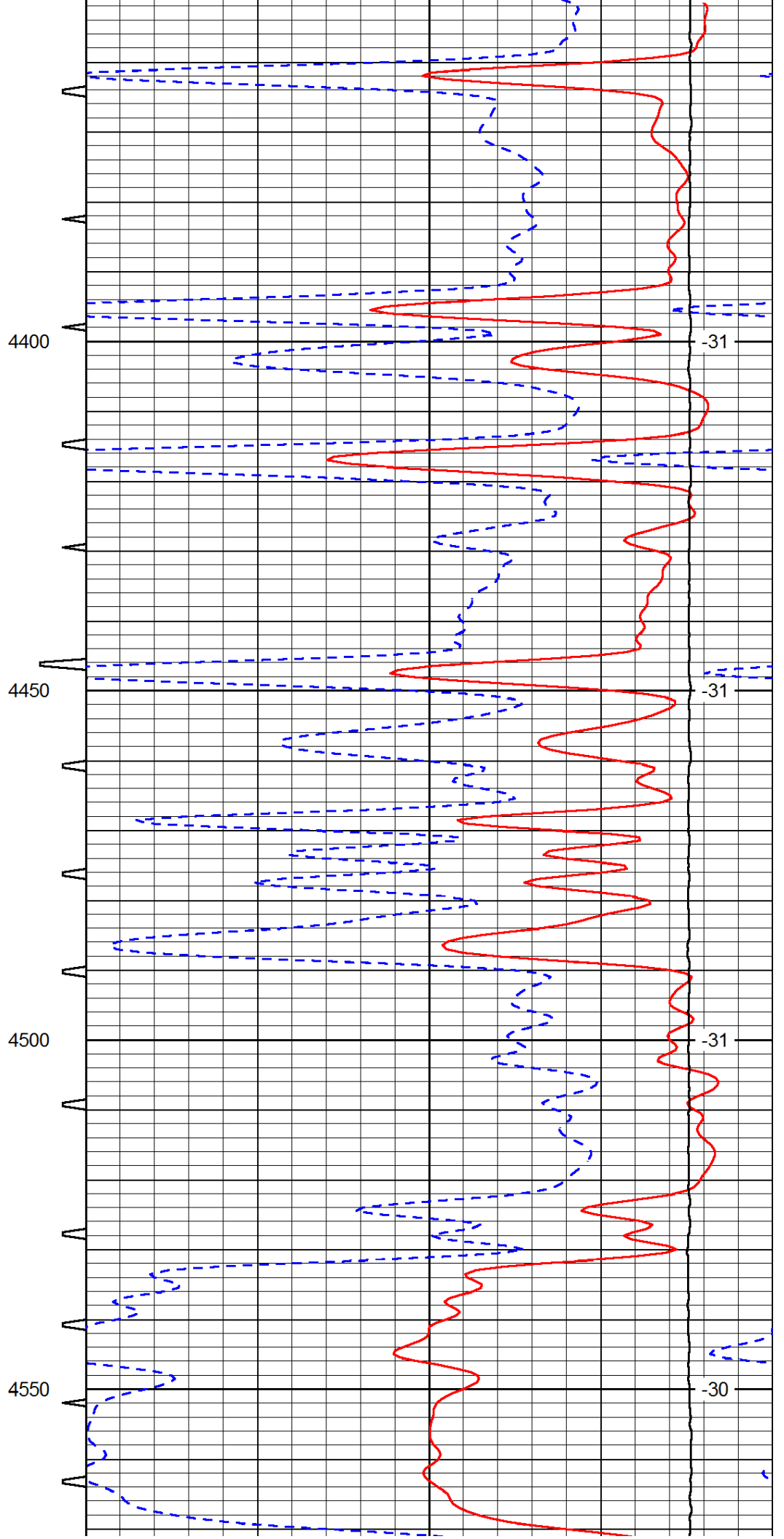
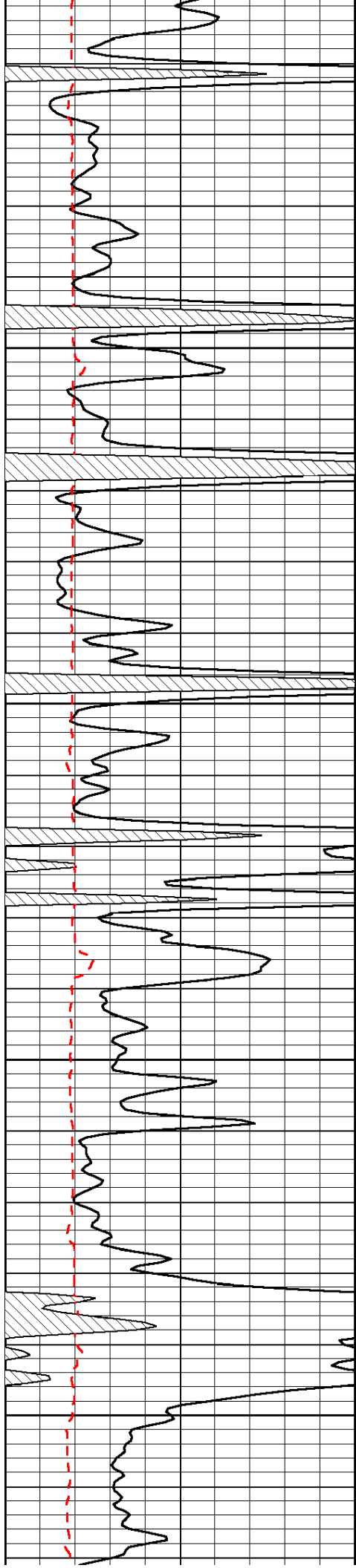


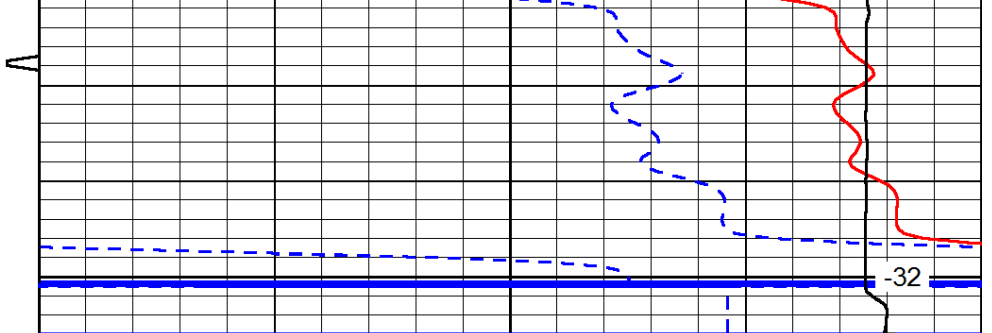
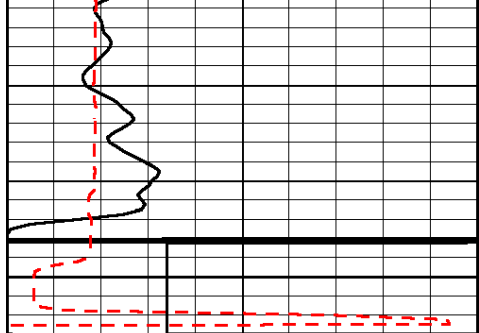












0	Gamma Ray	150
150	Gamma Ray	300
6	scal (GAPI)	16

Sonic Int	140	Delta Time (usec/ft)	40
5	0	SPOR	-10
	30	LTEN (lb)	0
	15000		

LSPD