



Pioneer Energy Services

# Radiation Guard Log

15-135-25509-00-00

Company **Palomino Petroleum, Inc.**  
 Well **B & P #1**  
 Field **Dumler**  
 County **Ness** State **Kansas**

Location **789' FNL & 654' FWL**

Sec: **12** Twp: **17S** Rge: **26W**

Other Services  
**MEL**

Permanent Datum **Ground Level** Elevation **2504**  
 Log Measured From **Kelly Bushing** 10 Ft. Above Perm. Datum  
 Drilling Measured From **Kelly Bushing**

Elevation  
 K.B. 2514  
 D.F. 2504  
 G.L. 2504

Date	1/3/2013	
Run Number	One	
Depth Driller	4565	
Depth Logger	4564	
Bottom Logged Interval	4563	
Top Log Interval	200	
Casing Driller	8.625 @ 221	
Casing Logger	222	
Bit Size	7.875	
Type Fluid in Hole	Chemical	
Salinity, ppm CL	3000	
Density / Viscosity	9.4 57	
pH / Fluid Loss	10.5 6.8	
Source of Sample	Flowline	
Rm @ Meas. Temp	0.85 @ 43	
Rmf @ Meas. Temp	0.64 @ 43	
Rmc @ Meas. Temp	1.15 @ 43	
Source of Rmf / Rmc	Charts	
Rm @ BHT	0.30 @ 124	
Operating Rig Time	4 Hours	
Max Rec. Temp. F	124	
Equipment Number	91	
Location	Hays	
Recorded By	D. Schmidt	
Witnessed By	Ken Wallace	

<<< Fold Here >>>

All interpretations are opinions based on inferences from electrical or other measurements and we cannot and do not guarantee the accuracy or correctness of any interpretation, and we shall not, except in the case of gross or willful negligence on our part, be liable or responsible for any loss, costs, damages, or expenses incurred or sustained by anyone resulting from any interpretation made by any of our officers, agents or employees. These interpretations are also subject to our general terms and conditions set out in our current Price Schedule.

### Comments

Thank you for using Log-Tech, Inc.  
(785) 625-3858

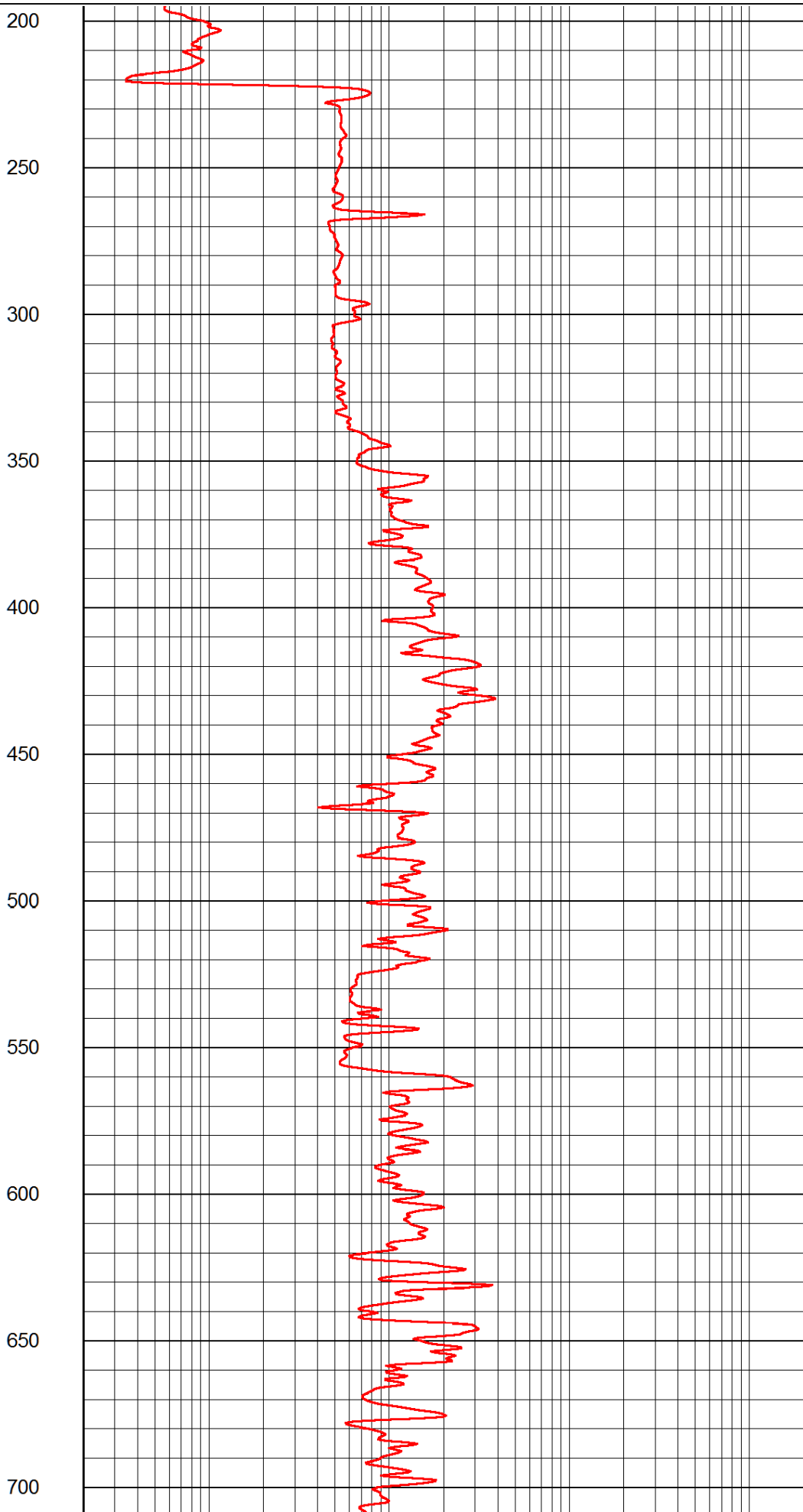
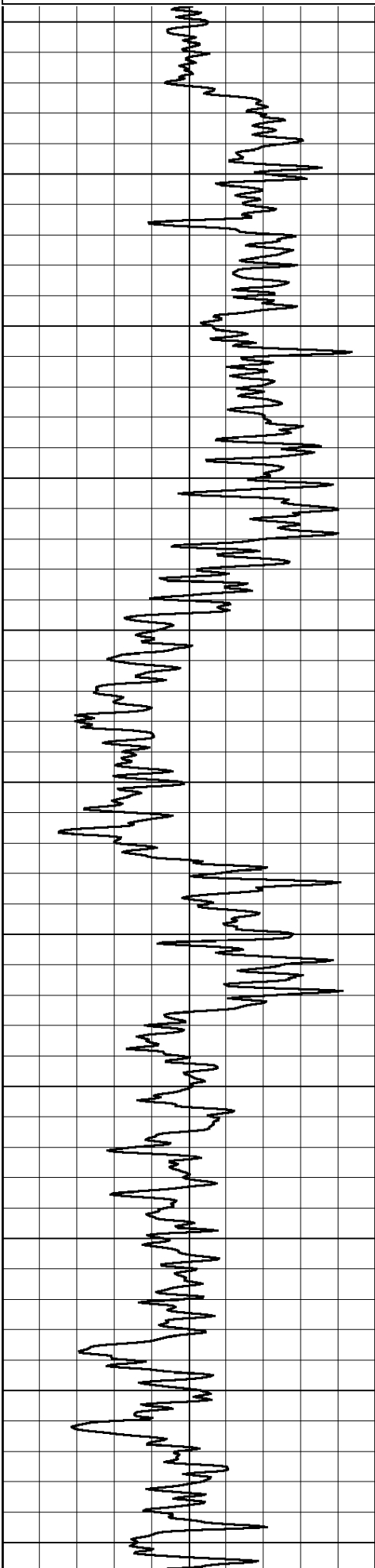
Utica,  
East to E Rd, 3 South,  
East into

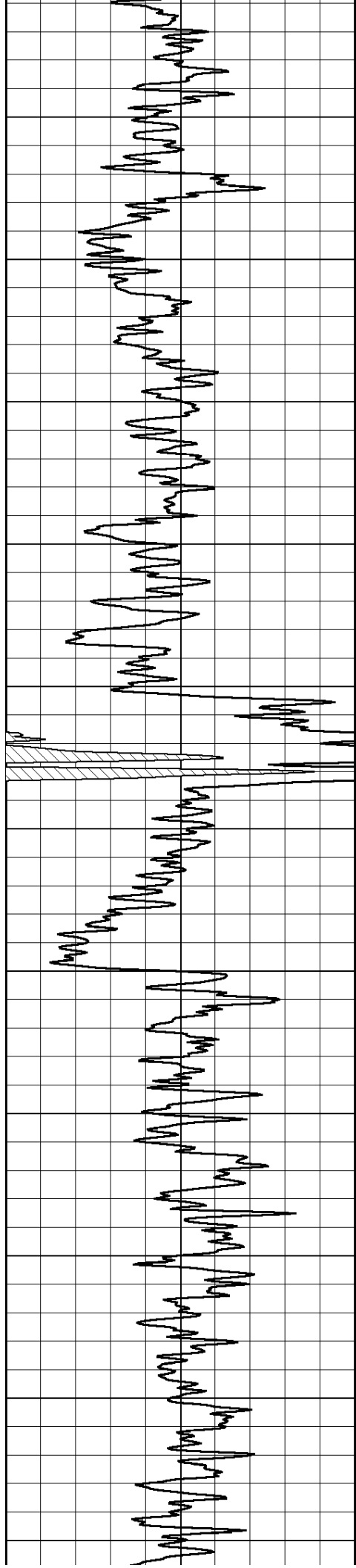
Database File: palomino\_010313hd.db  
 Dataset Pathname: rag/palrag  
 Presentation Format: rag2in  
 Dataset Creation: Thu Jan 03 17:01:24 2013  
 Charted by: Depth in Feet scaled 1:600

0 Gamma Ray (GAPI) 150

0.2 Igrd (Ohm-m)

2000





750

800

850

900

950

1000

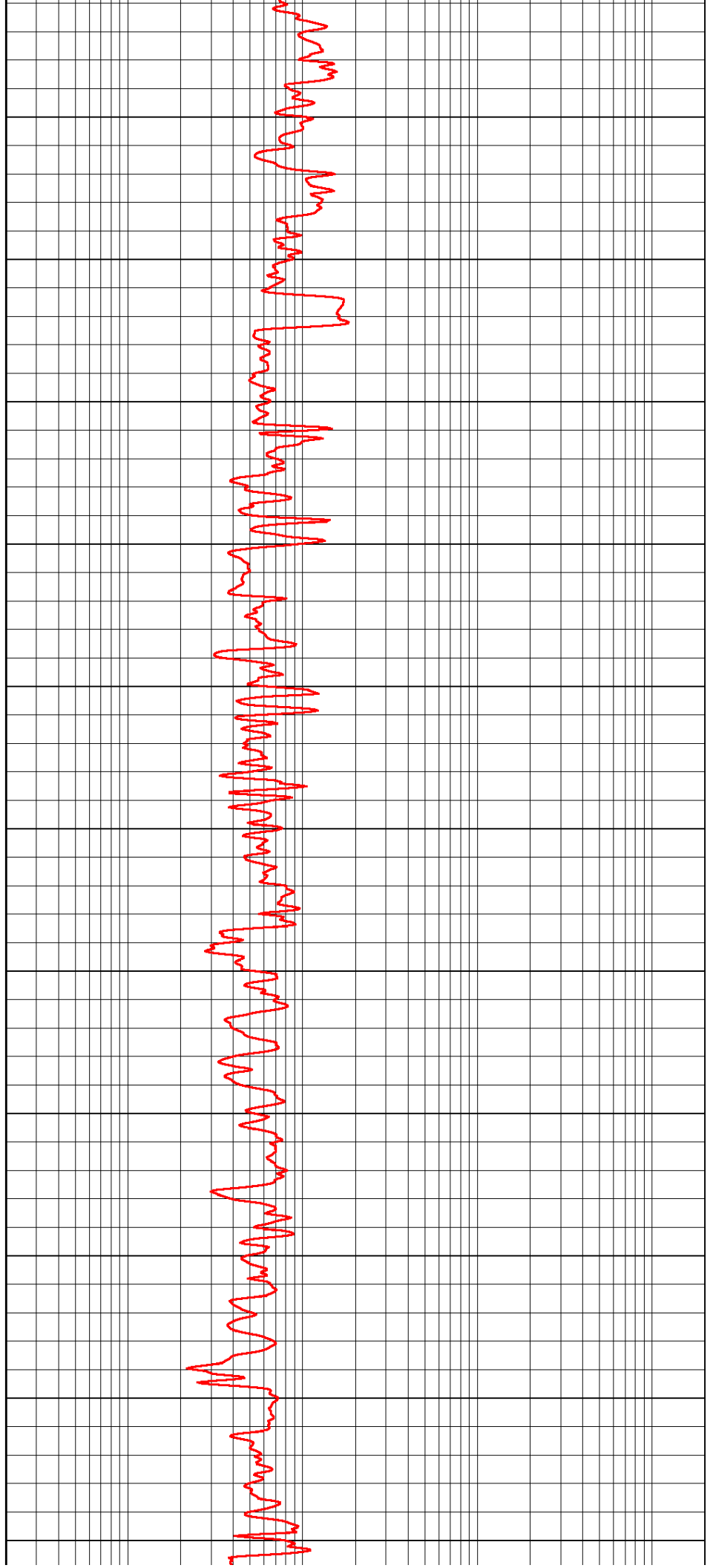
1050

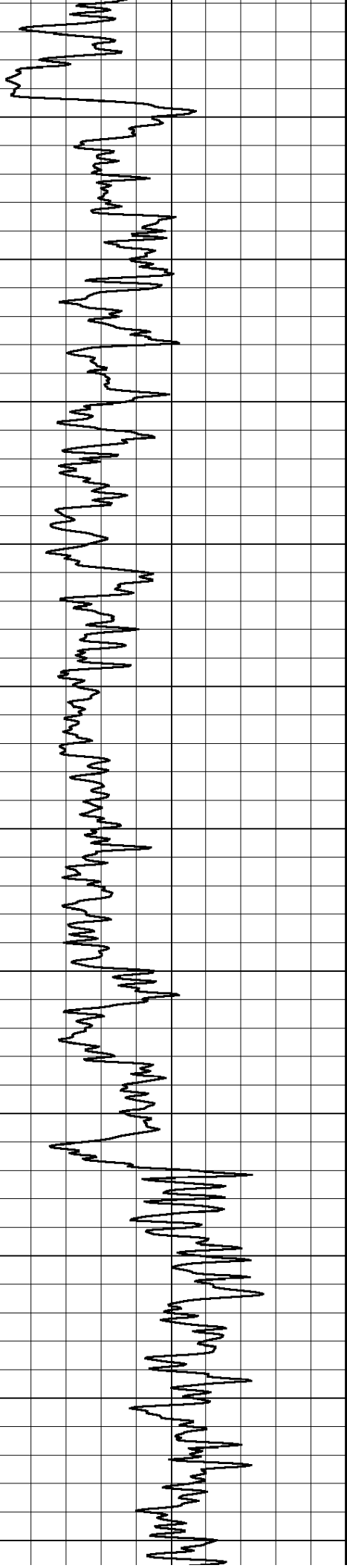
1100

1150

1200

1250





1300

1350

1400

1450

1500

1550

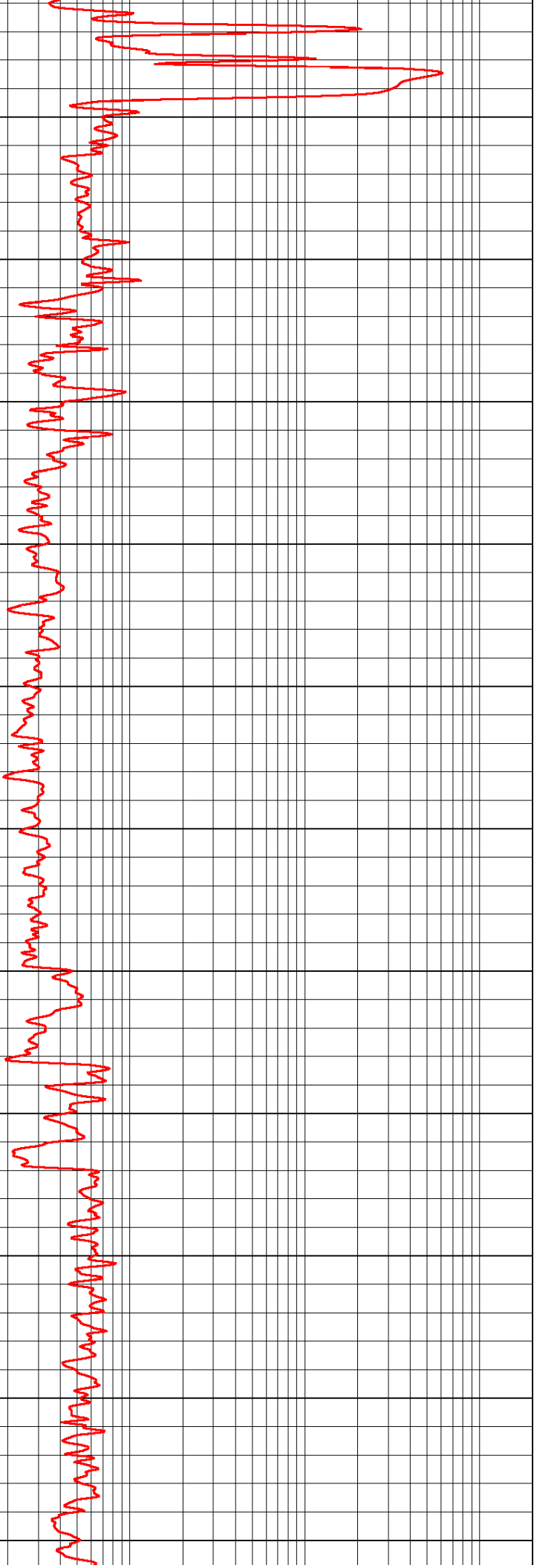
1600

1650

1700

1750

1800



1300

1350

1400

1450

1500

1550

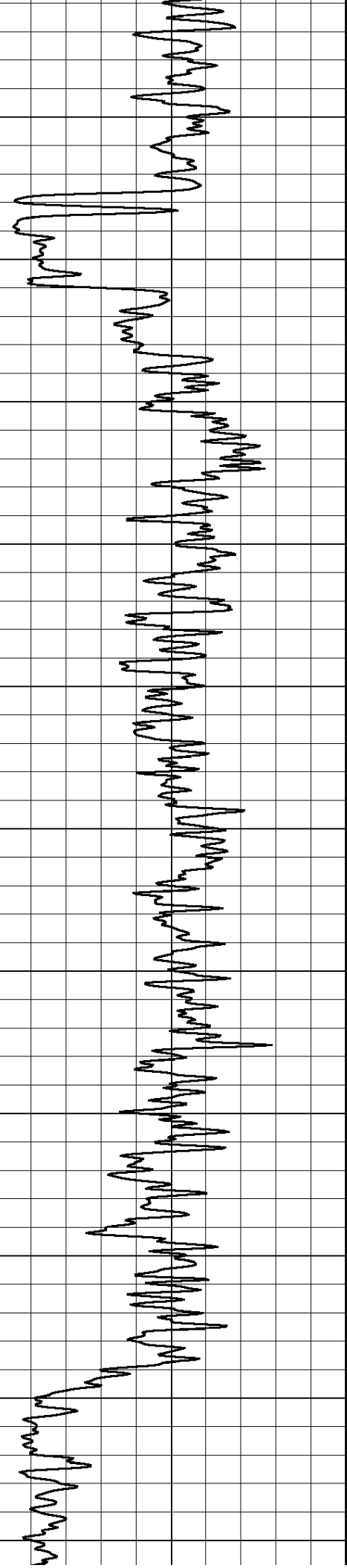
1600

1650

1700

1750

1800



1850

1900

1950

2000

2050

2100

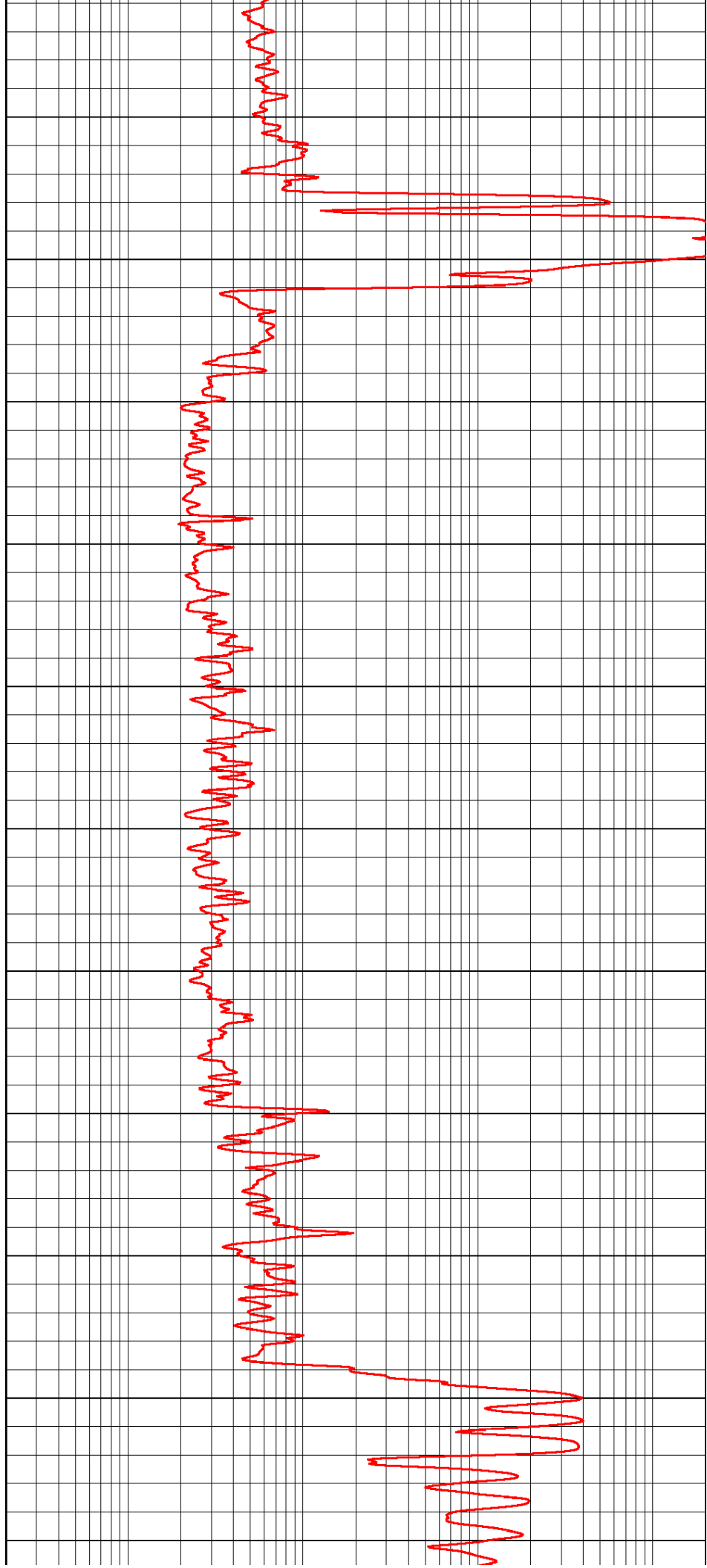
2150

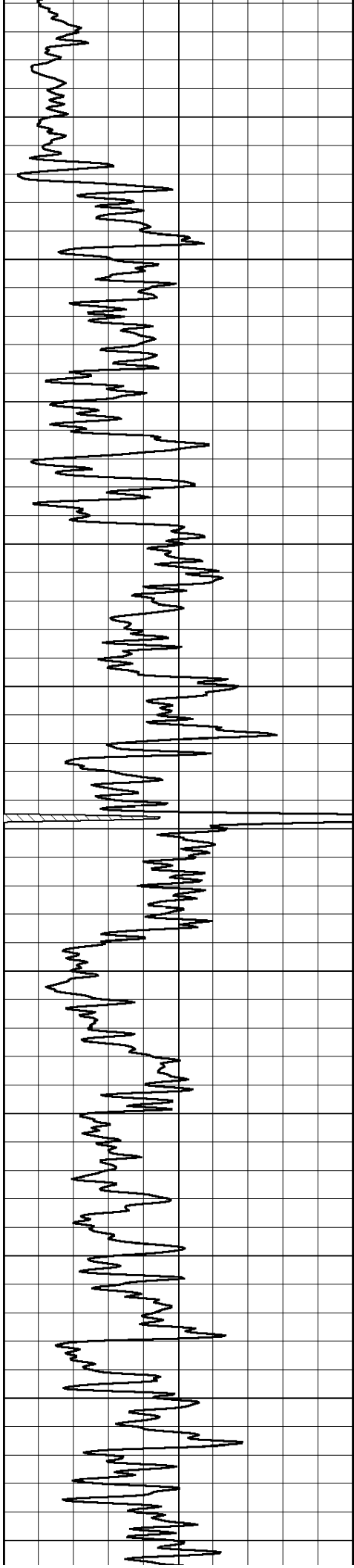
2200

2250

2300

2350





2400

2450

2500

2550

2600

2650

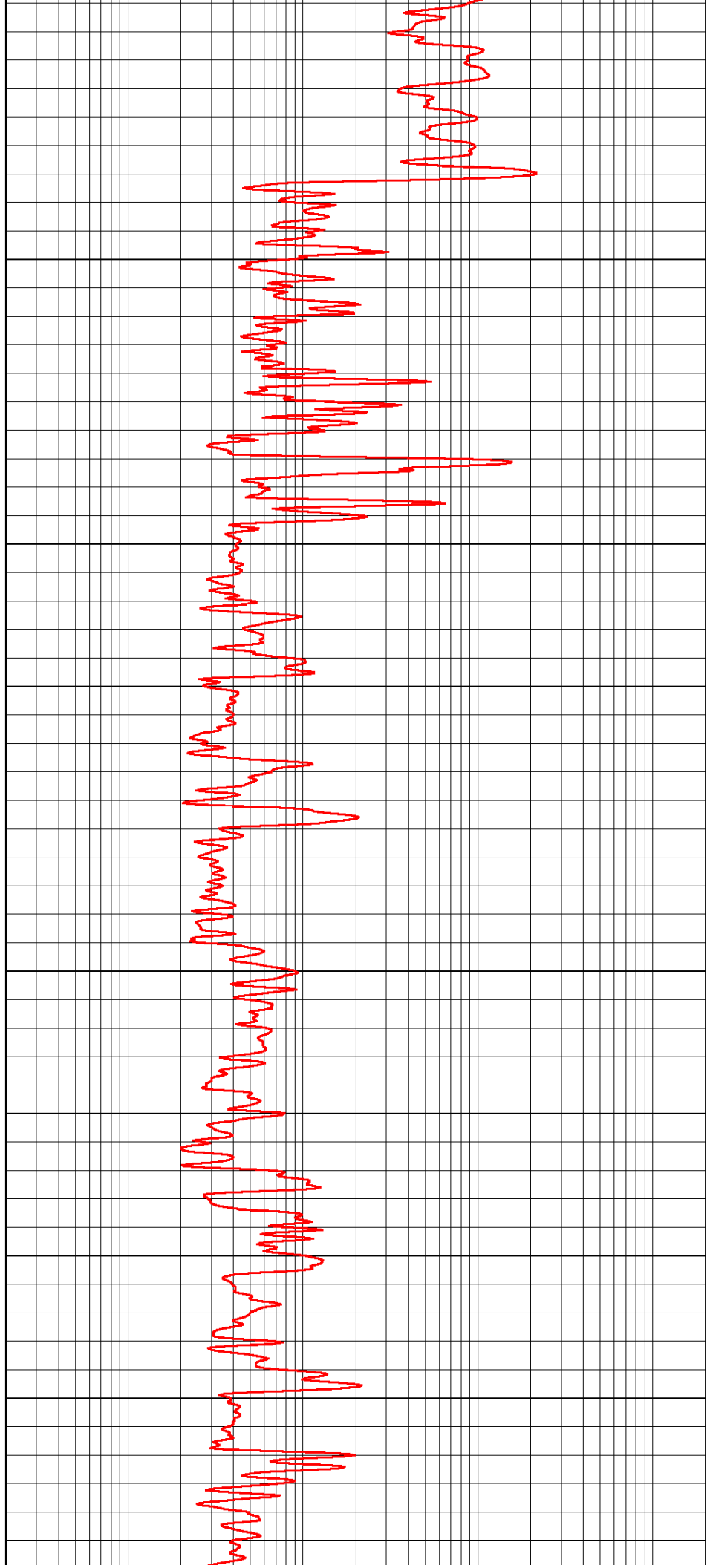
2700

2750

2800

2850

2900



2400

2450

2500

2550

2600

2650

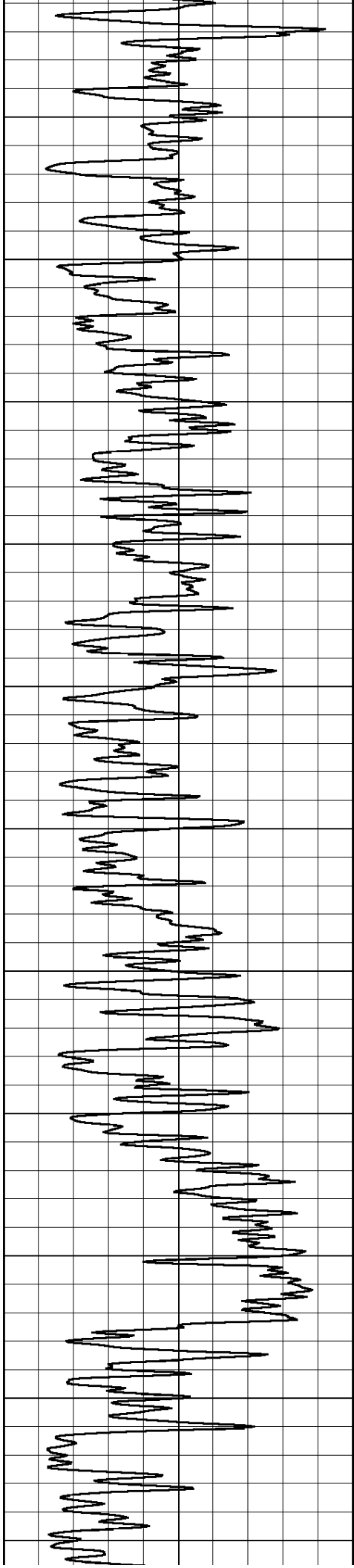
2700

2750

2800

2850

2900



2950

3000

3050

3100

3150

3200

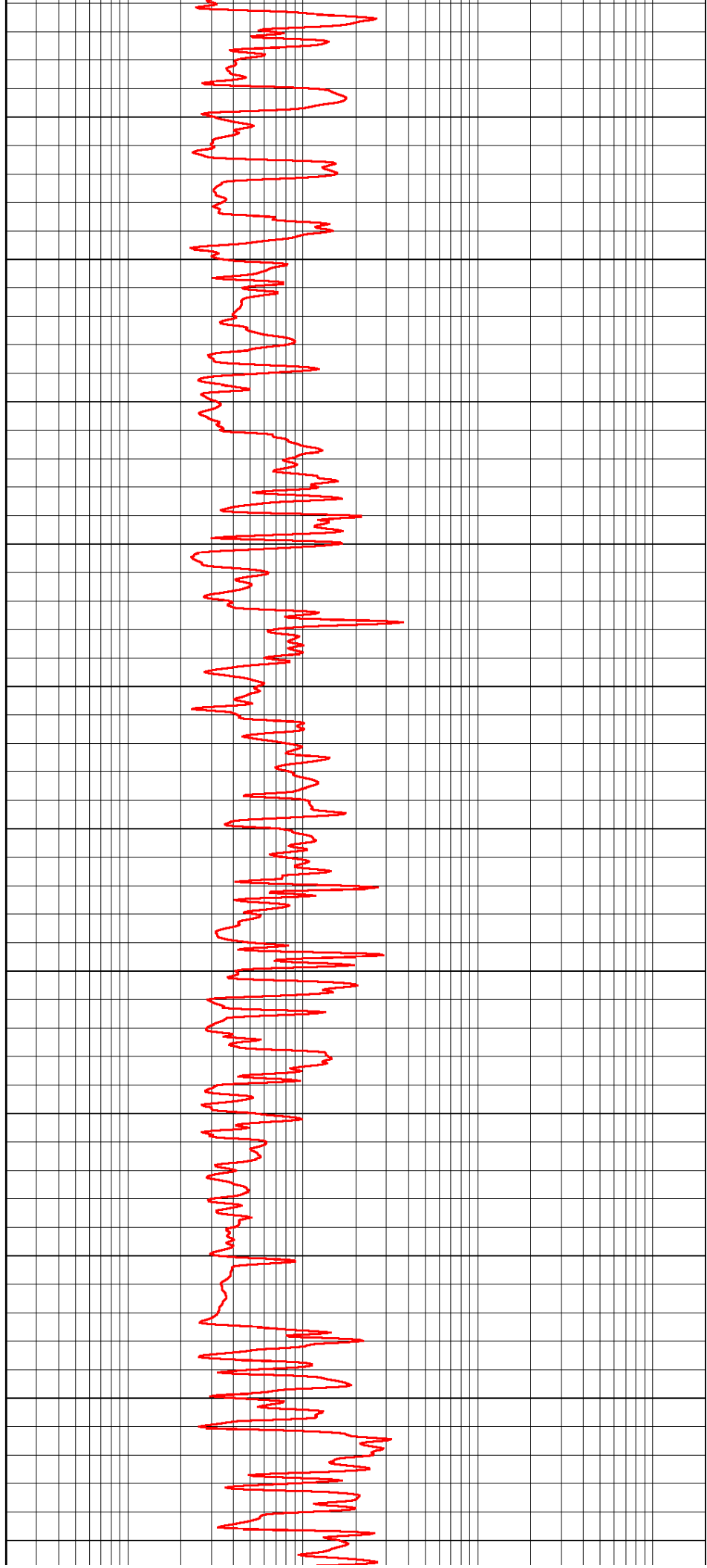
3250

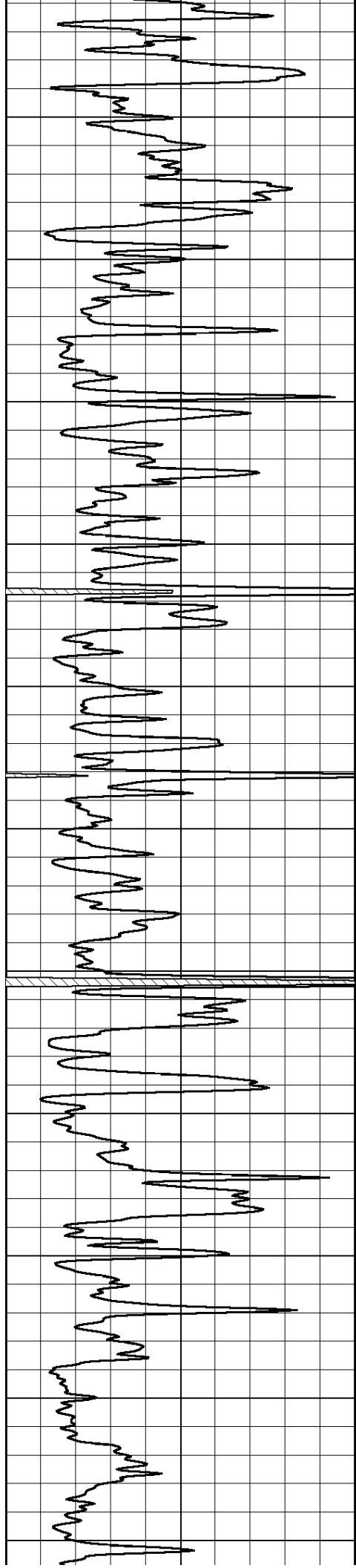
3300

3350

3400

3450





3500

3550

3600

3650

3700

3750

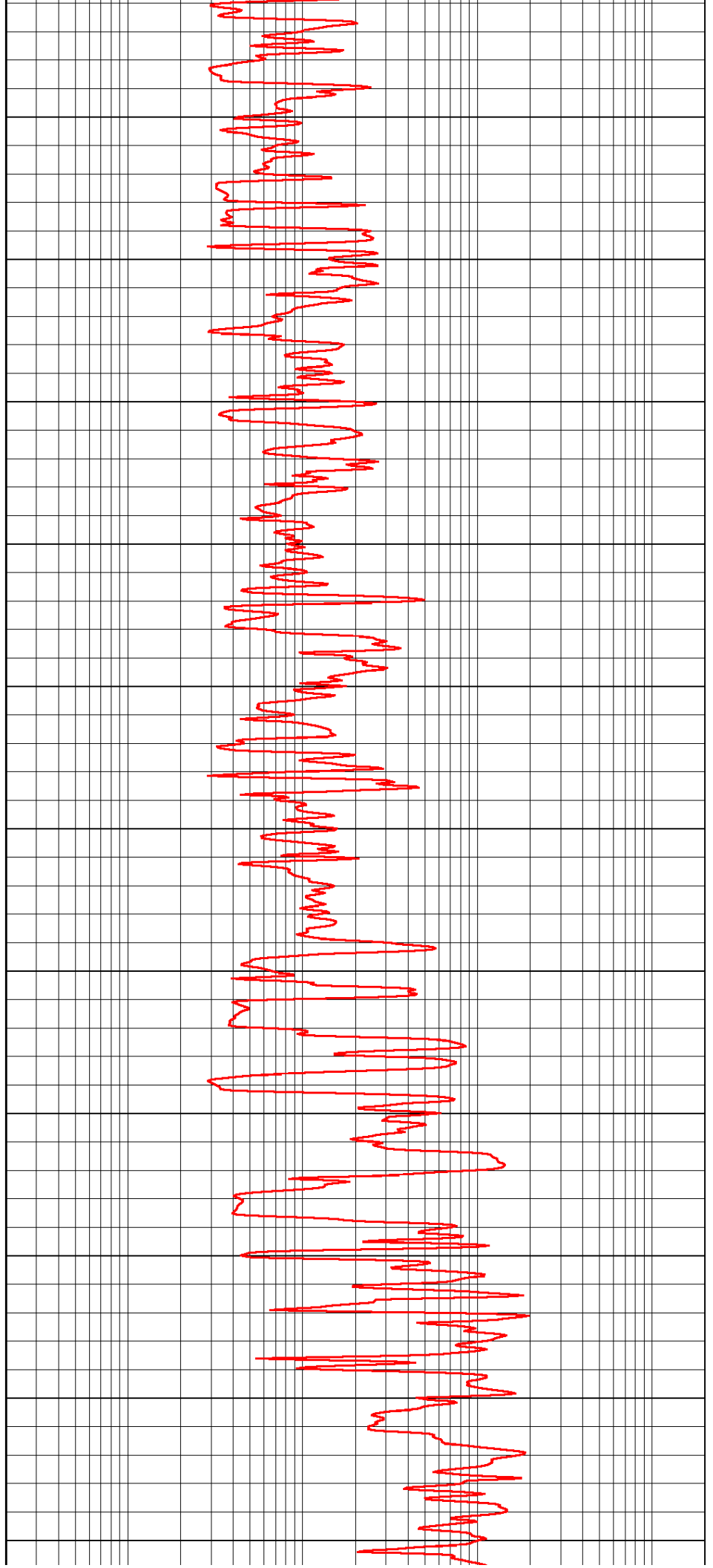
3800

3850

3900

3950

4000



3500

3550

3600

3650

3700

3750

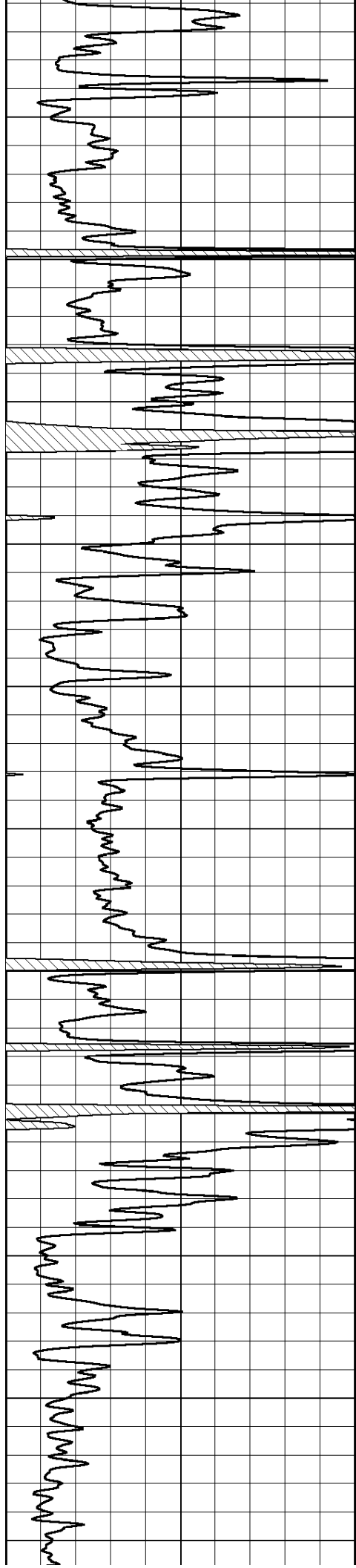
3800

3850

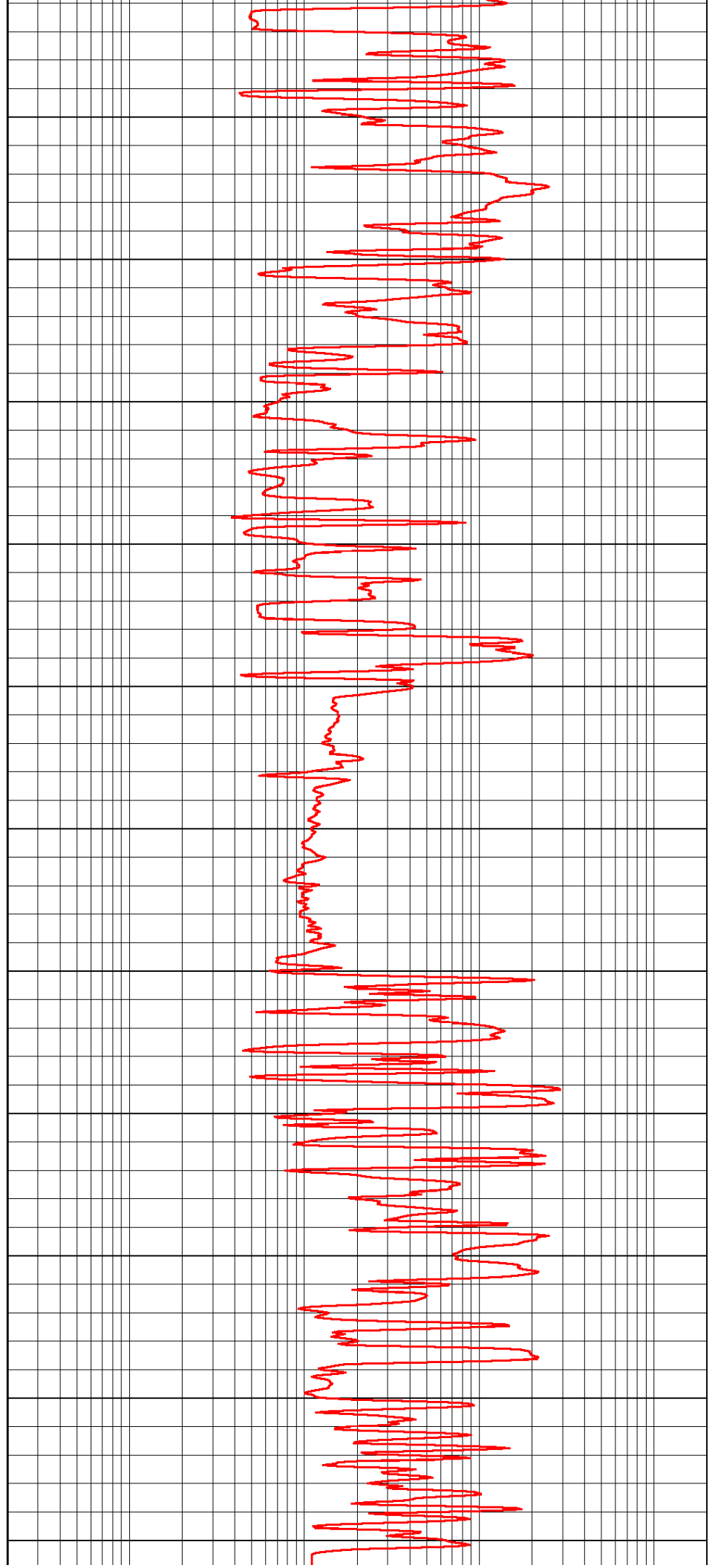
3900

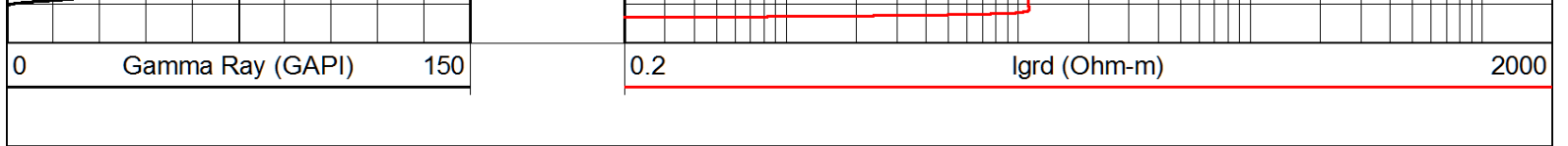
3950

4000

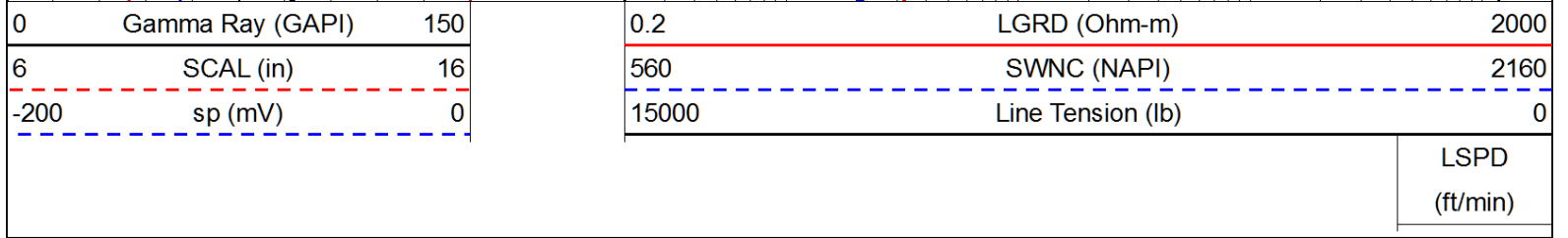
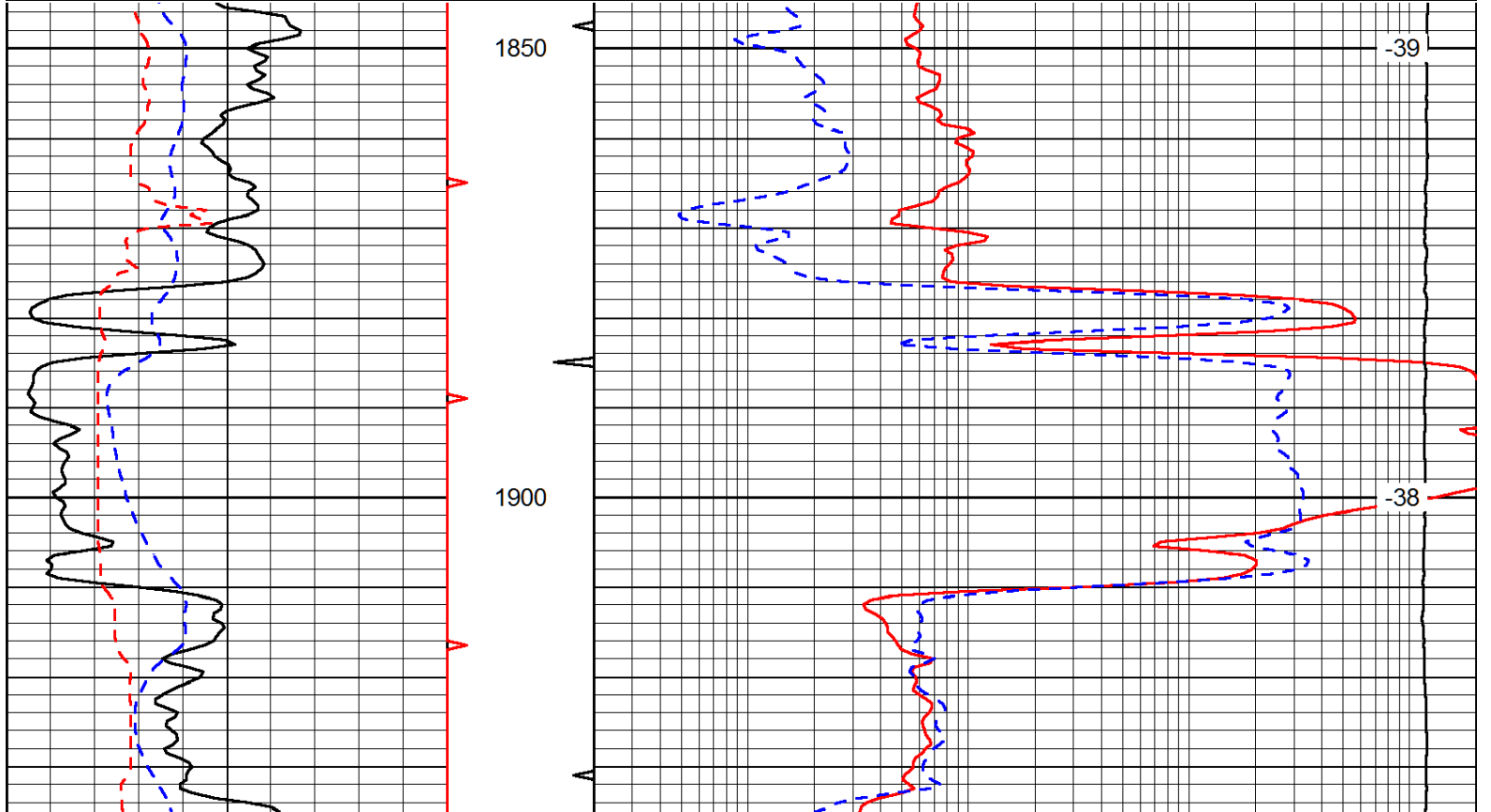
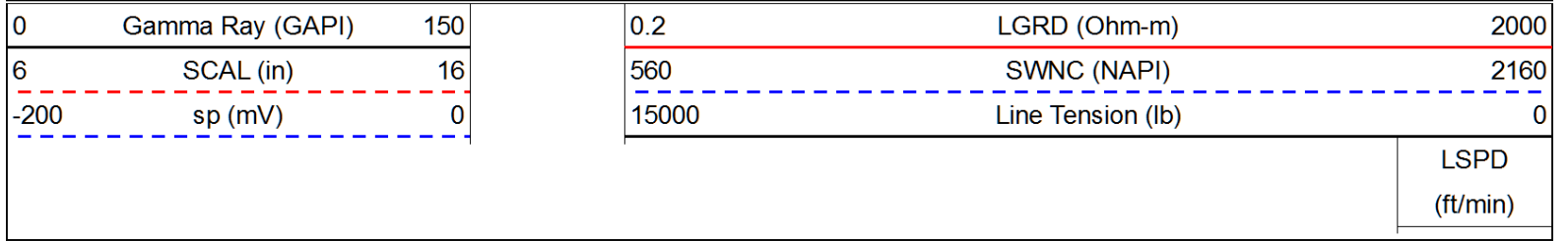


4050  
4100  
4150  
4200  
4250  
4300  
4350  
4400  
4450  
4500  
4550

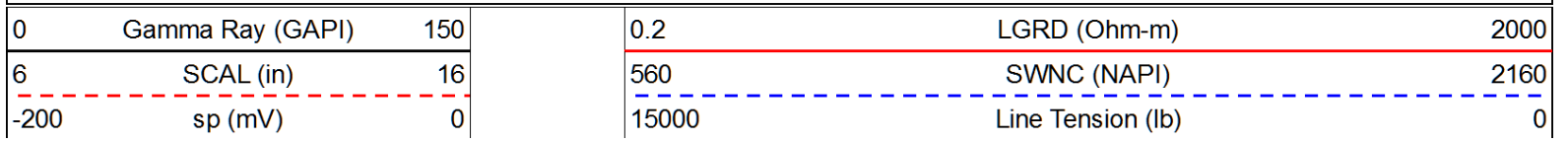




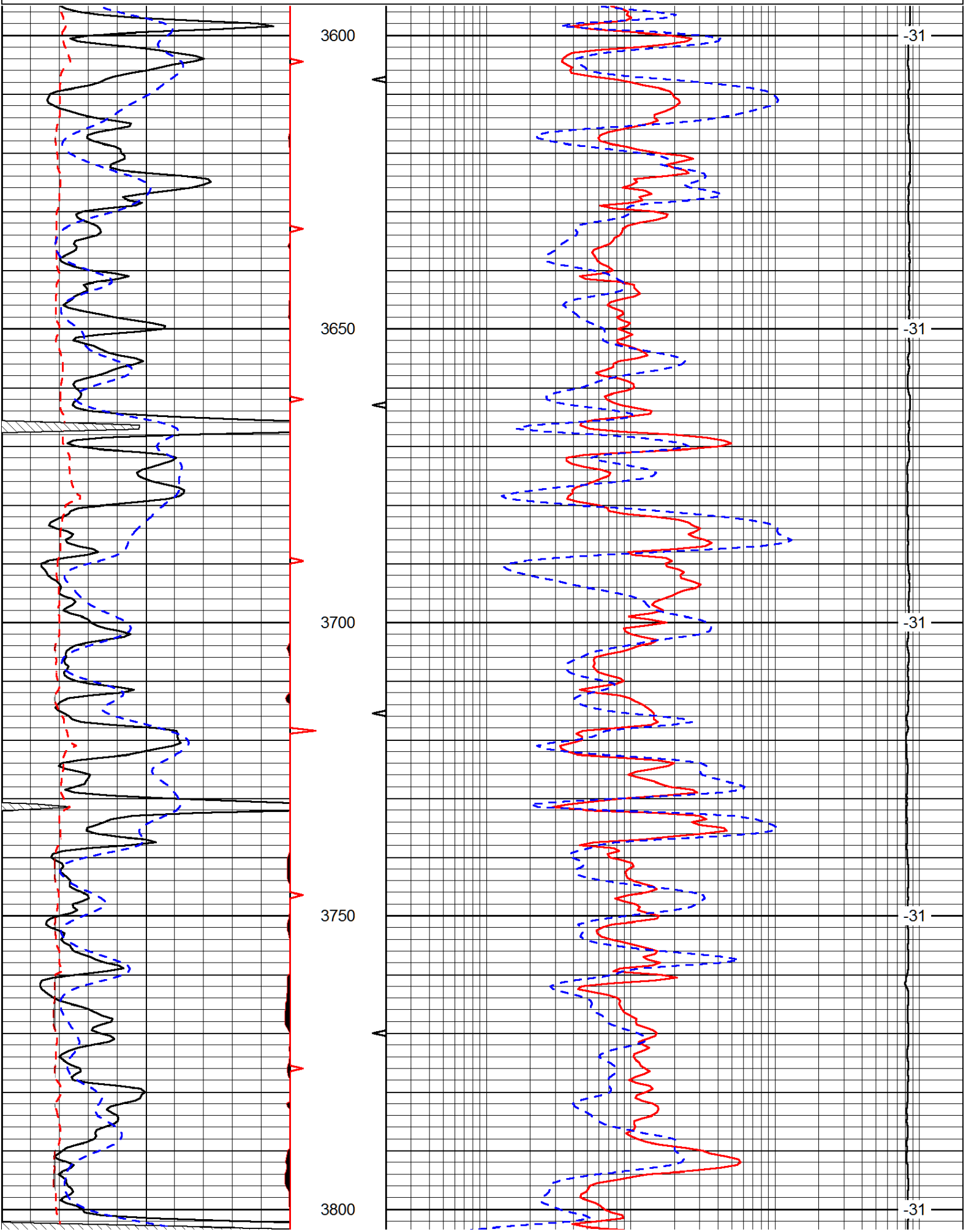
Database File: palomino\_010313hd.db  
 Dataset Pathname: rag/palrag  
 Presentation Format: rag  
 Dataset Creation: Thu Jan 03 17:01:24 2013  
 Charted by: Depth in Feet scaled 1:240

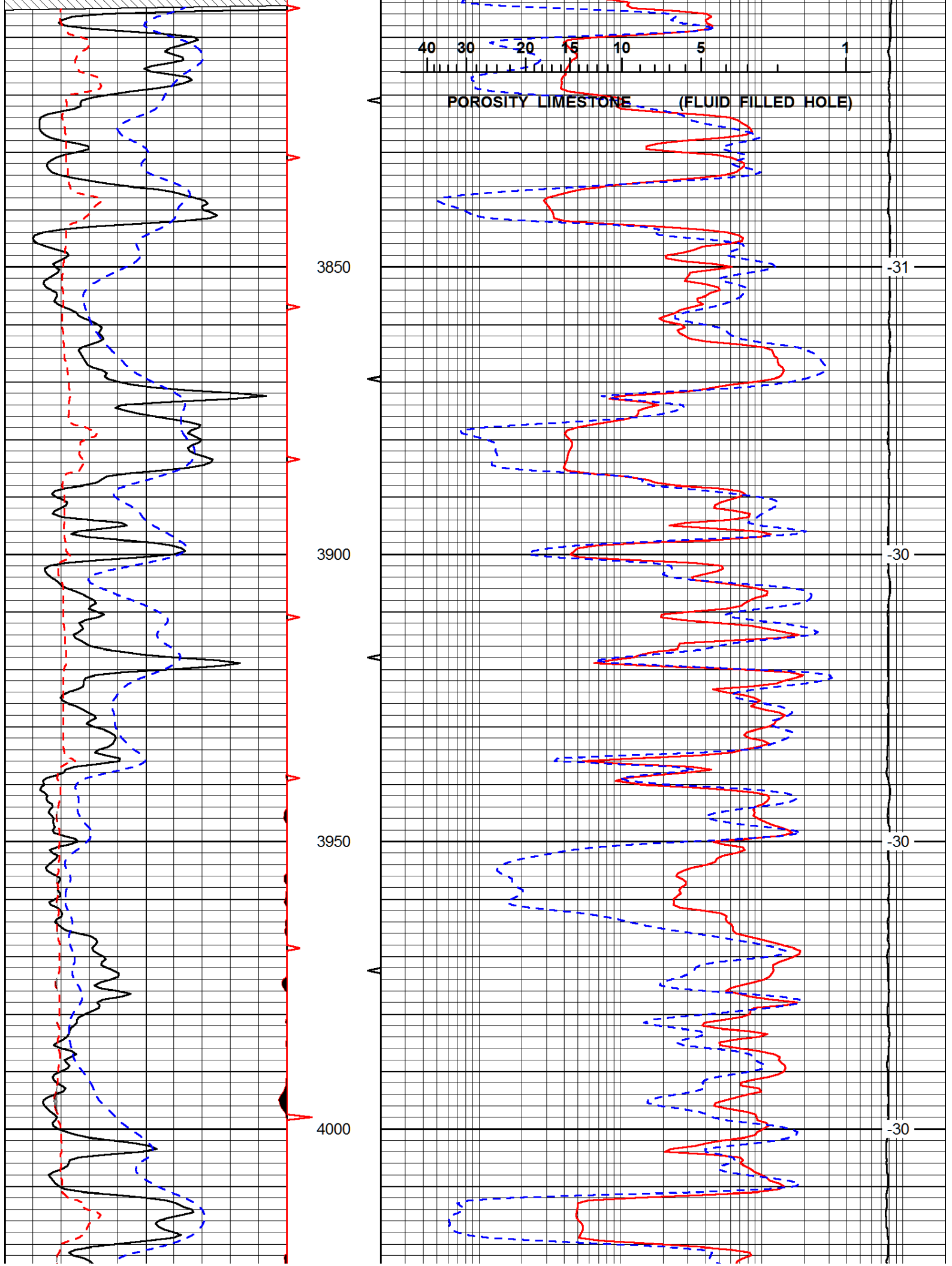


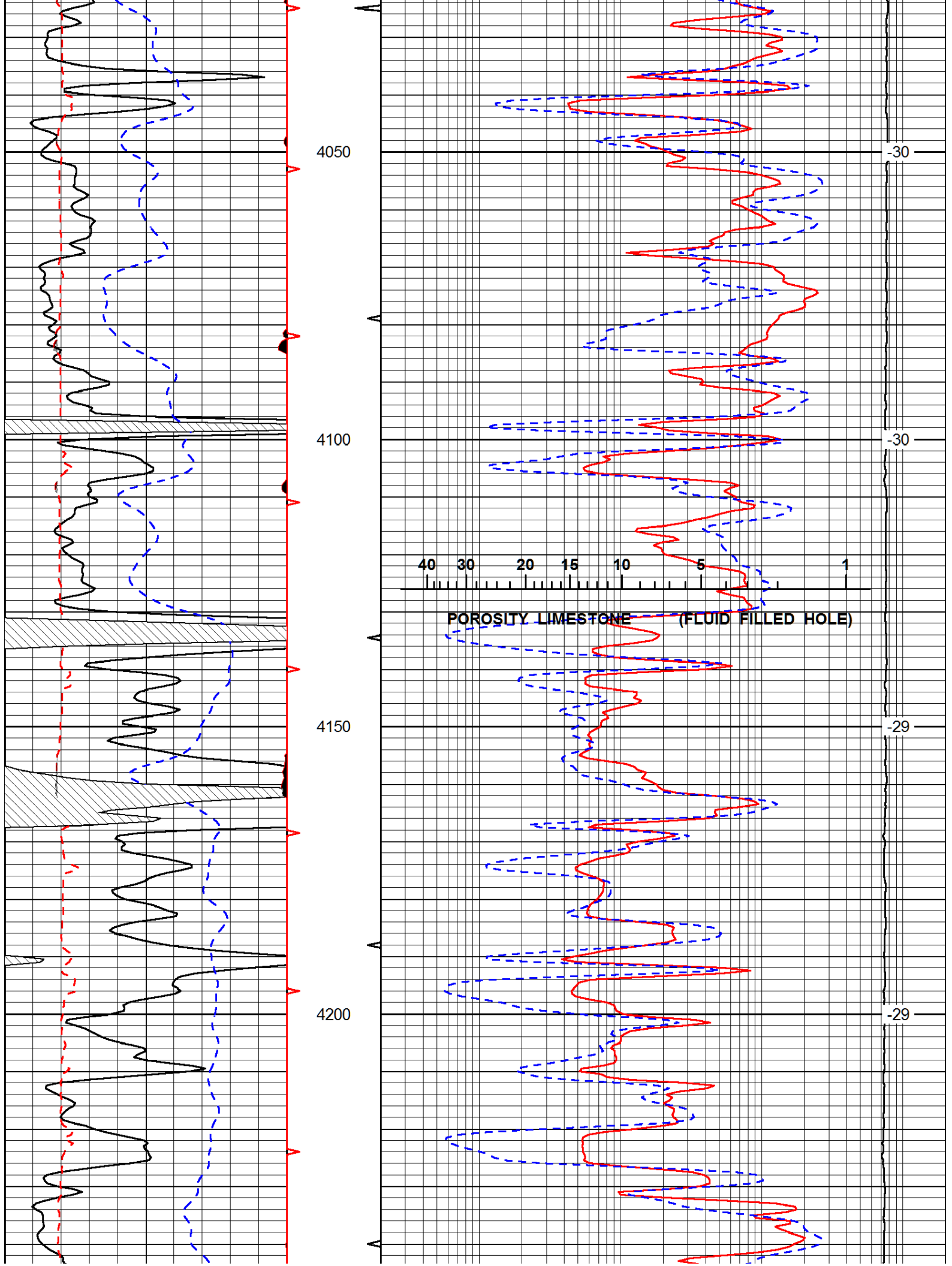
Database File: palomino\_010313hd.db  
 Dataset Pathname: rag/palrag  
 Presentation Format: rag  
 Dataset Creation: Thu Jan 03 17:01:24 2013  
 Charted by: Depth in Feet scaled 1:240

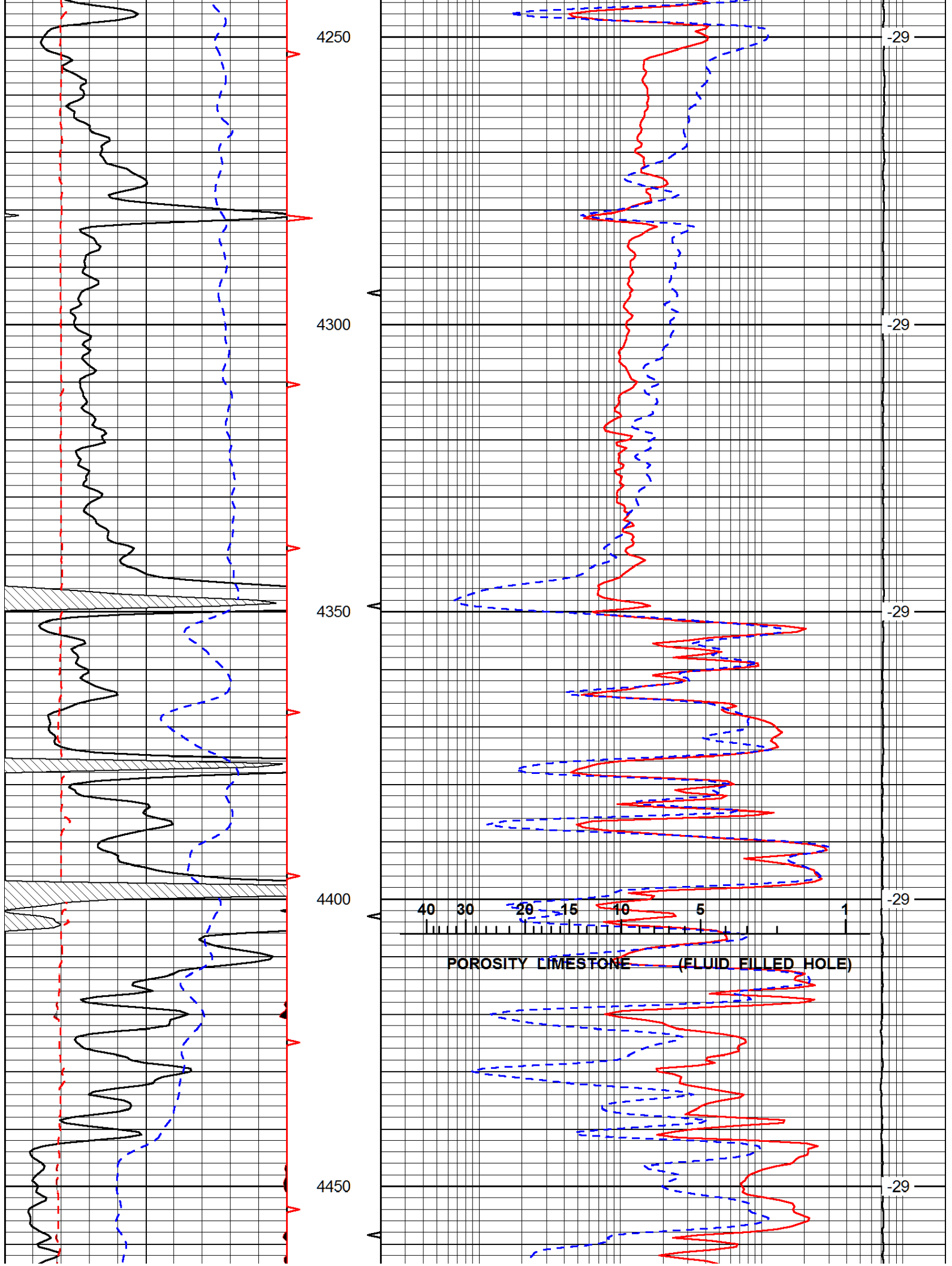


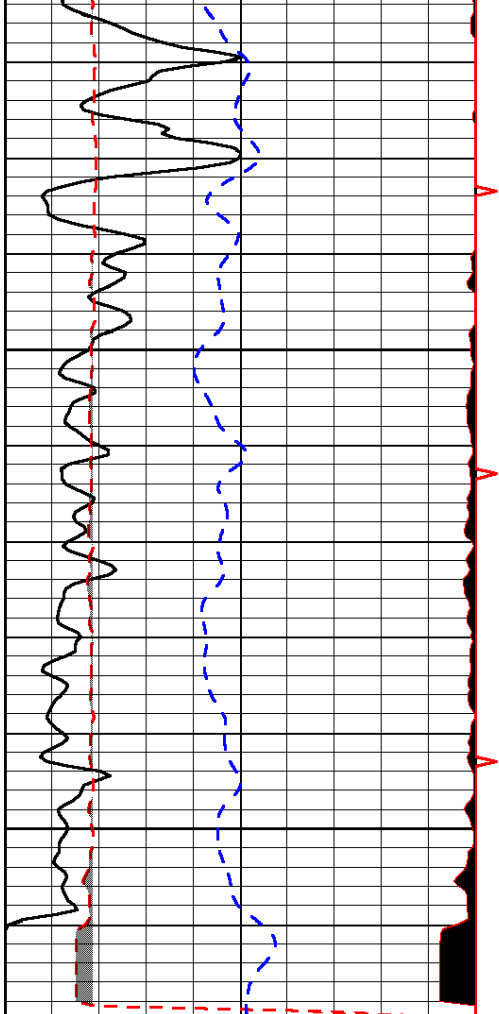
LSPD  
(ft/min)







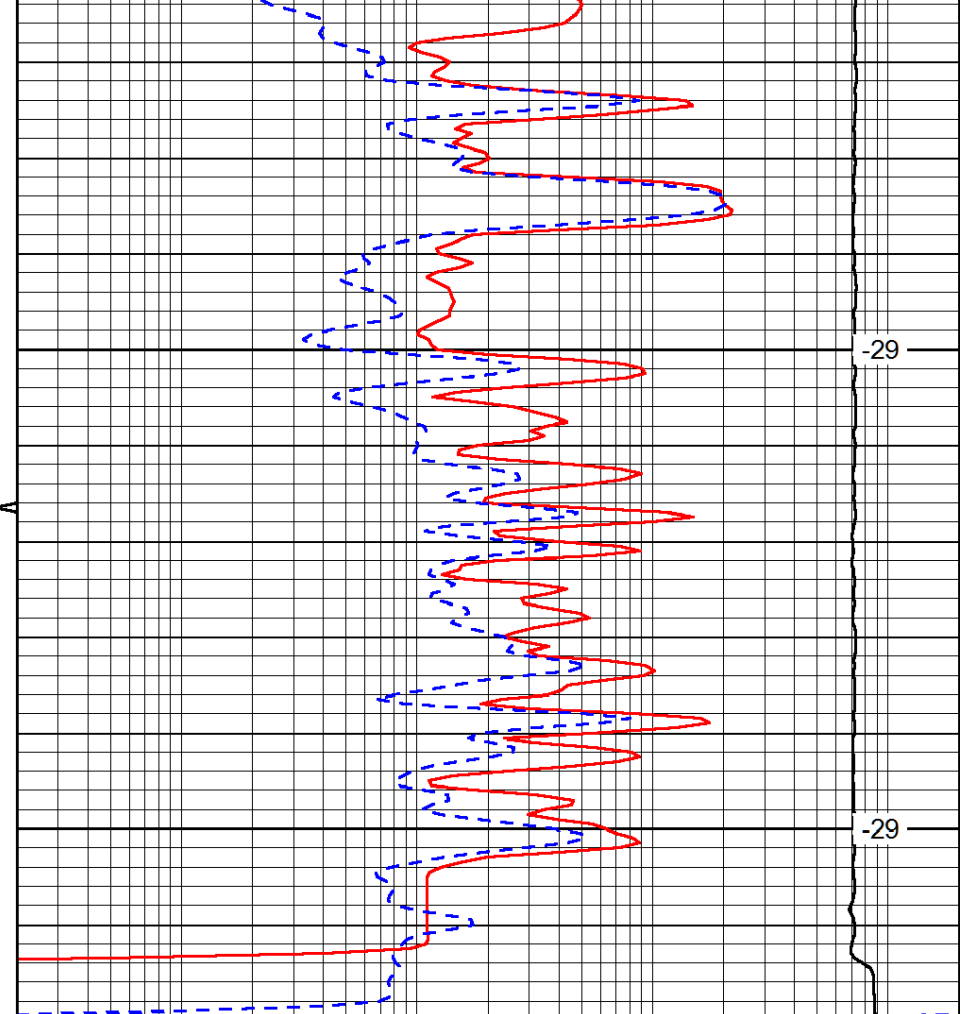




4500

4550

0	Gamma Ray (GAPI)	150
6	SCAL (in)	16
-200	sp (mV)	0



-29

-29

0.2	LGRD (Ohm-m)	2000
560	SWNC (NAPI)	2160
15000	Line Tension (lb)	0

LSPD  
(ft/min)