



Pioneer Energy Services

Microresistivity Log

API No.	15-063-22,072-00-00		
Company	Palomino Petroleum, Inc.		
Well	Elza-Trebor No.1		
Field			
County	Gove	State	Kansas
Location	148' FSL & 983' FEL		
Sec: 12	Twp: 15S	Rge: 26W	Other Services RAG

Permanent Datum	Ground Level	Elevation 2371	K.B. 2376
Log Measured From	Kelly Bushing	5 Ft. Above Perm. Datum	D.F. 2371
Drilling Measured From	Kelly Bushing		G.L. 2371
Date	12/19/2012		
Run Number	Two		
Depth Driller	4400		
Depth Logger	4400		
Bottom Logged Interval	4399		
Top Log Interval	3500		
Casing Driller	8.625 @ 217		
Casing Logger	217		
Bit Size	7.875		
Type Fluid in Hole	Chemical		
Salinity, ppm CL	2,600		
Density / Viscosity	9.3	47	
pH / Fluid Loss	10.5	7.0	
Source of Sample	Flowline		
Rm @ Meas. Temp	.95	@ 54	
Rmf @ Meas. Temp	.71	@ 54	
Rmc @ Meas. Temp	1.28	@ 54	
Source of Rmf / Rmc	Charts		
Rm @ BHT	.43	@ 120	
Operating Rig Time	4 Hours		
Max Rec. Temp. F	120		
Equipment Number	10		
Location	Hays		
Recorded By	C. Desaire		
Witnessed By	Jerry Smith		

<<< Fold Here >>>

All interpretations are opinions based on inferences from electrical or other measurements and we cannot and do not guarantee the accuracy or correctness of any interpretation, and we shall not, except in the case of gross or willful negligence on our part, be liable or responsible for any loss, costs, damages, or expenses incurred or sustained by anyone resulting from any interpretation made by any of our officers, agents or employees. These interpretations are also subject to our general terms and conditions set out in our current Price Schedule.

Comments

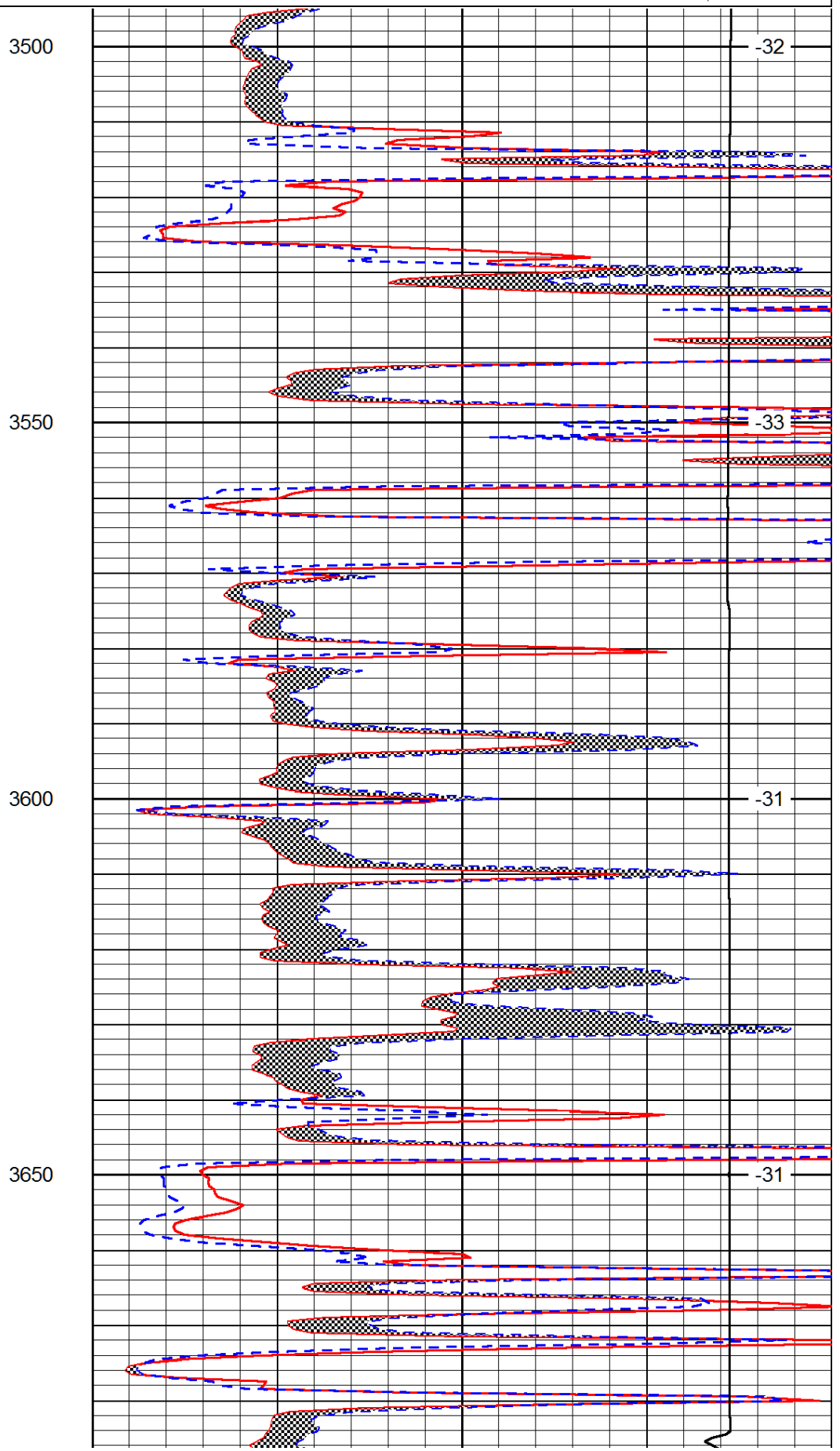
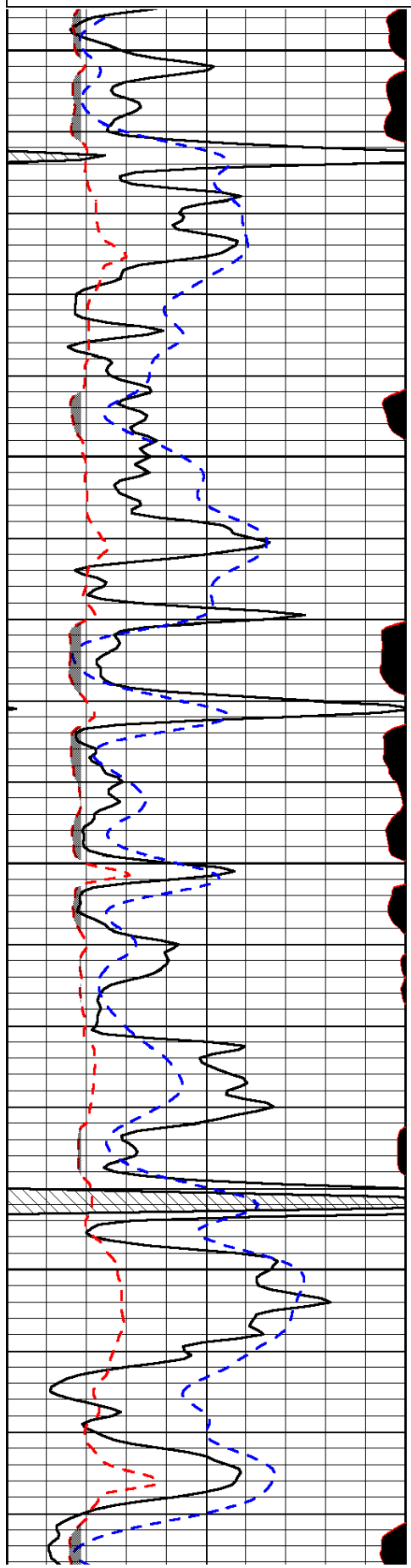
Thank you for using Log-Tech, Inc.
(785) 625-3858

Utica KS, 1 E to E Rd, 8 N, W Into

Database File: c:\warrior\data\palomino_elzatrebor_#1\palominohd.db
 Dataset Pathname: rag/palrag2
 Presentation Format: micro
 Dataset Creation: Wed Dec 19 16:28:26 2012
 Charted by: Depth in Feet scaled 1:240

0	Gamma Ray (GAPI)	150
6	MCAL (in)	16
2.875	Mud Cake (in)	7.875
-200	SP (mV)	0

0	Micro Inverse 1 X 1 (Ohm-m)	40
0	Micro Normal 2" (Ohm-m)	40
10000	Line Weight (lb)	0
	LSPD (ft/min)	



3500

-32

3550

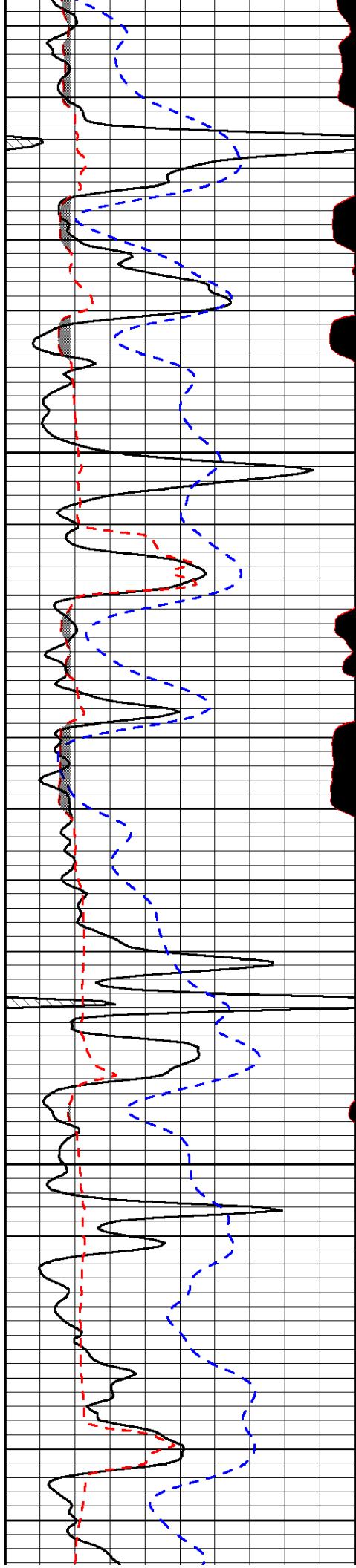
-33

3600

-31

3650

-31



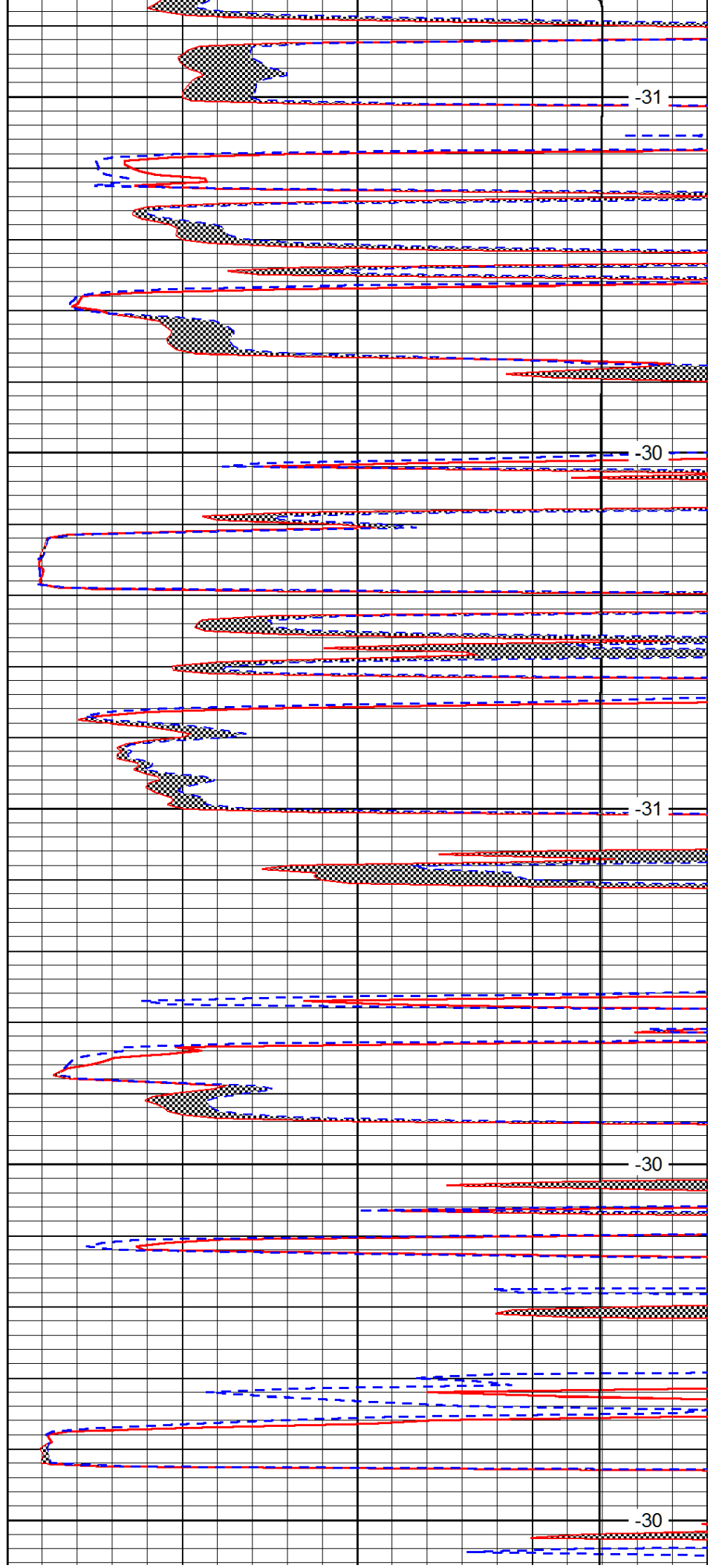
3700

3750

3800

3850

3900



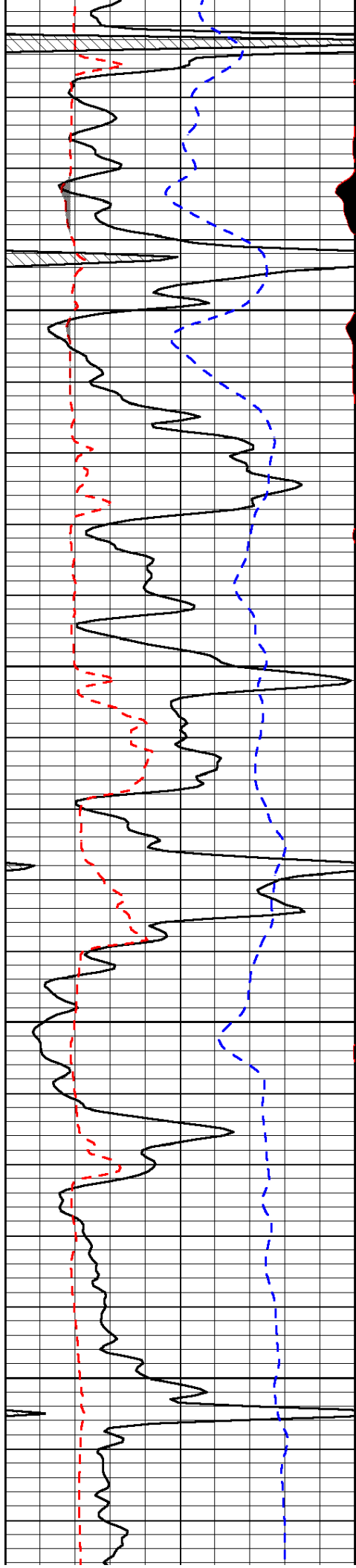
-31

-30

-31

-30

-30

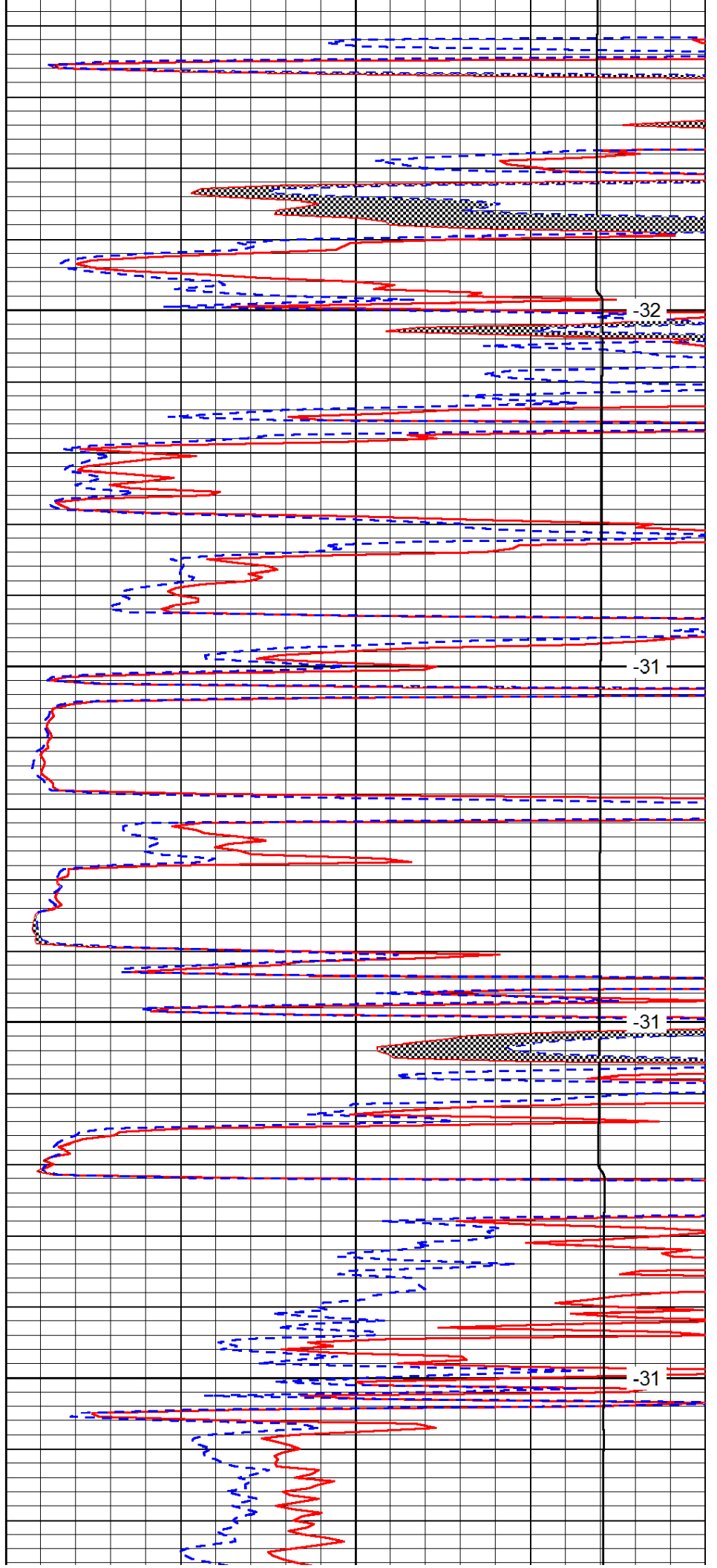


3950

4000

4050

4100

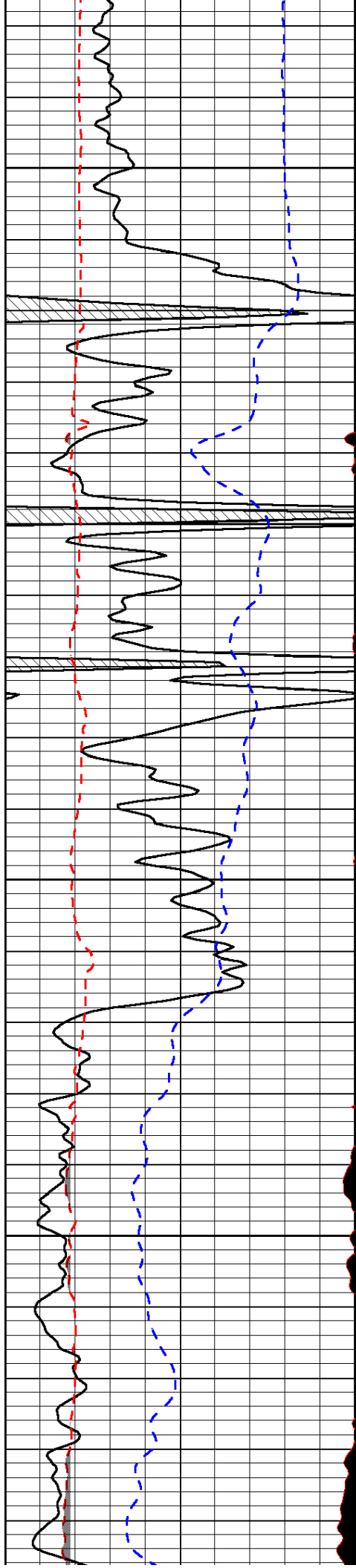


-32

-31

-31

-31

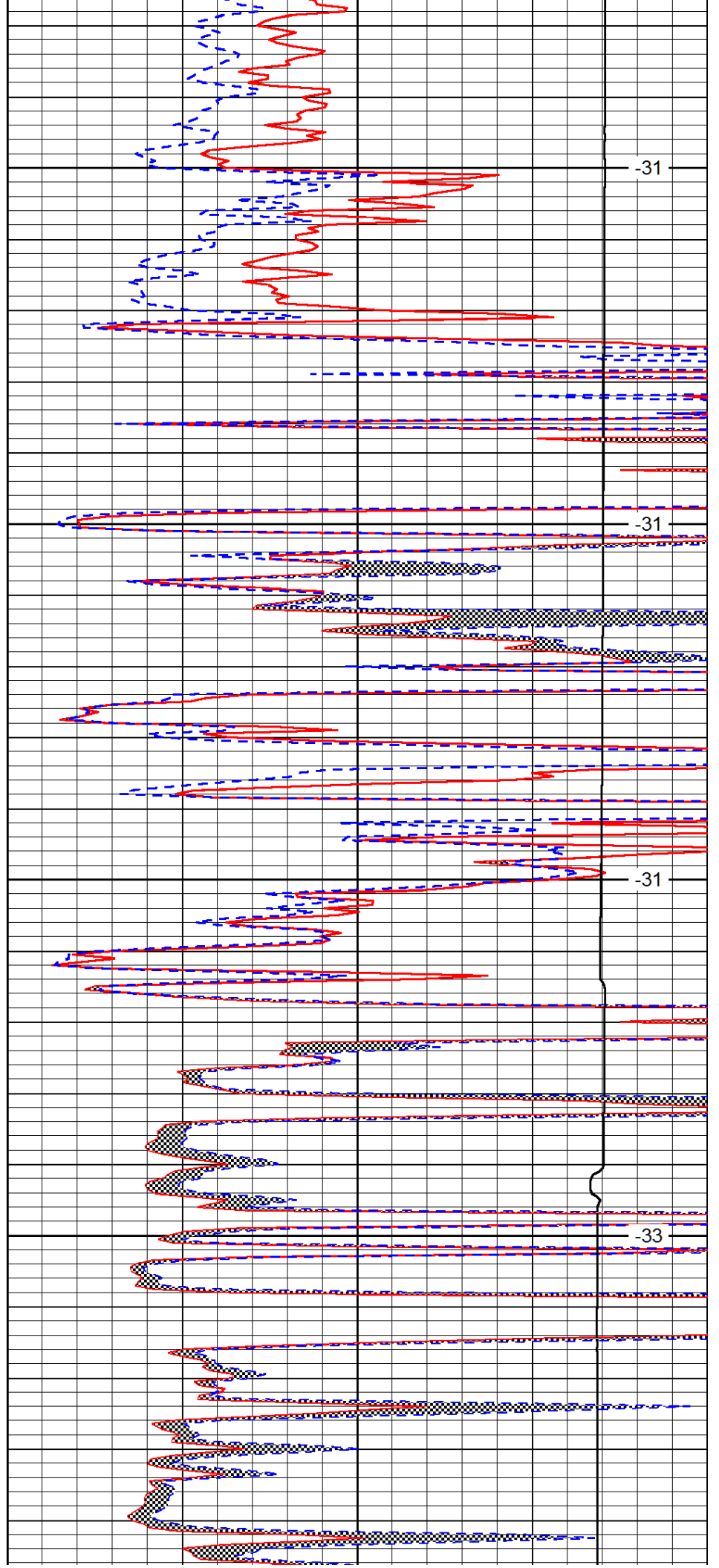


4150

4200

4250

4300

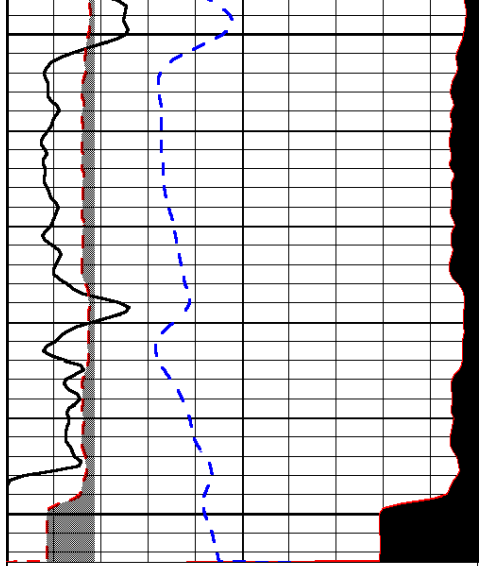


-31

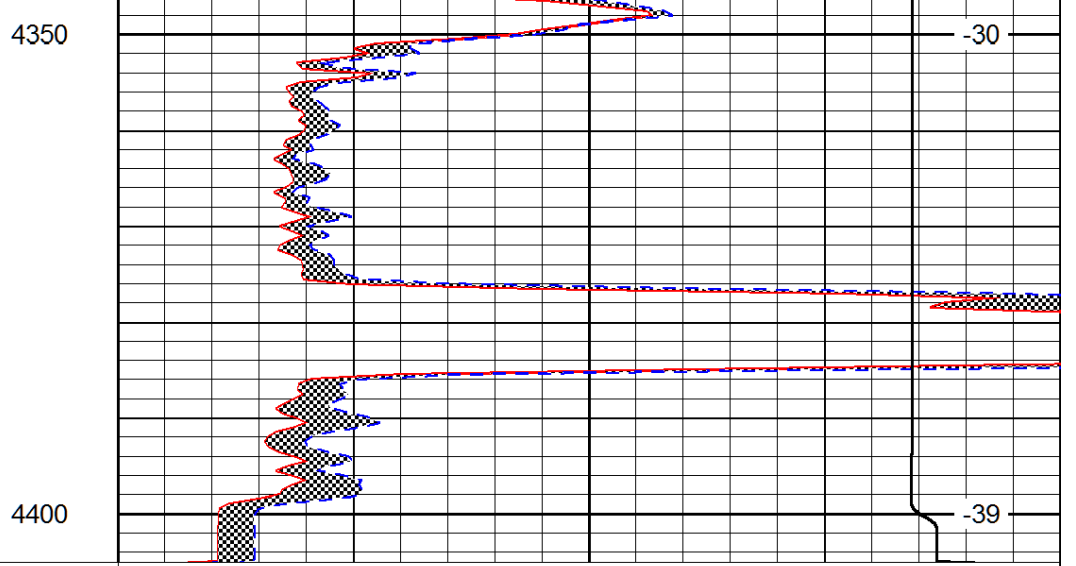
-31

-31

-33



0	Gamma Ray (GAPI)	150
6	MCAL (in)	16
2.875	Mud Cake (in)	7.875
-200	SP (mV)	0



0	Micro Inverse 1 X 1 (Ohm-m)	40
0	Micro Normal 2" (Ohm-m)	40
10000	Line Weight (lb)	0

LSPD
(ft/min)