



Pioneer Energy Services

Radiation Guard Log

15-063-22,072-00-00

API No.

Company Palomino Petroleum, Inc.

Well Elza-Trebor No.1

Field

County Gove State Kansas

Location

148' FSL & 983' FEL

Other Services
MEL

Sec: 12 Twp: 15S Rge: 26W

Permanent Datum Ground Level Elevation 2371
Log Measured From Kelly Bushing 5 Ft. Above Perm. Datum
Drilling Measured From Kelly Bushing

Elevation
K.B. 2376
D.F. 2371
G.L. 2371

Date 12/19/2012

Run Number One

Depth Driller 4400

Depth Logger 4400

Bottom Logged Interval 4399

Top Log Interval 200

Casing Driller 8.625 @ 217

Casing Logger 217

Bit Size 7.875

Type Fluid in Hole Chemical

Salinity, ppm CL 2,600

Density / Viscosity 9.3 47

pH / Fluid Loss 10.5 7.0

Source of Sample Flowline

Rm @ Meas. Temp .95 @ 54

Rmf @ Meas. Temp .71 @ 54

Rmc @ Meas. Temp 1.28 @ 54

Source of Rmf / Rmc Charts

Rm @ BHT .43 @ 120

Operating Rig Time 4 Hours

Max Rec. Temp. F 120

Equipment Number 10

Location Hays

Recorded By C. Desaire

Witnessed By Jerry Smith

<<< Fold Here >>>

All interpretations are opinions based on inferences from electrical or other measurements and we cannot and do not guarantee the accuracy or correctness of any interpretation, and we shall not, except in the case of gross or willful negligence on our part, be liable or responsible for any loss, costs, damages, or expenses incurred or sustained by anyone resulting from any interpretation made by any of our officers, agents or employees. These interpretations are also subject to our general terms and conditions set out in our current Price Schedule.

Comments

Thank you for using Log-Tech, Inc.
(785) 625-3858

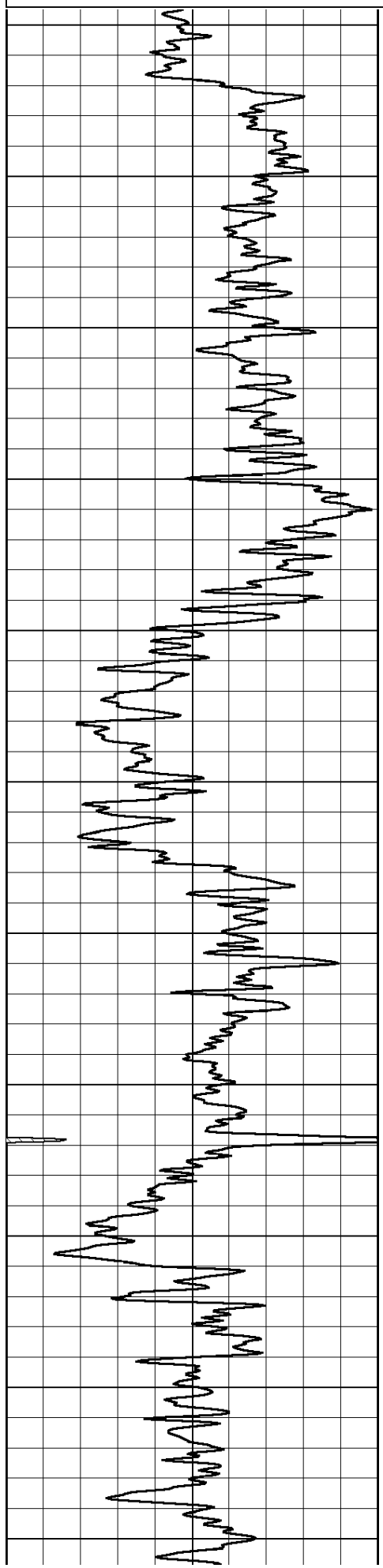
Utica KS, 1 E to E Rd, 8 N, W Into

Database File: c:\warrior\data\palomino_elzatrebor_#1\palominohd.db
 Dataset Pathname: rag/palrag2
 Presentation Format: rag2in
 Dataset Creation: Wed Dec 19 16:28:26 2012
 Charted by: Depth in Feet scaled 1:600

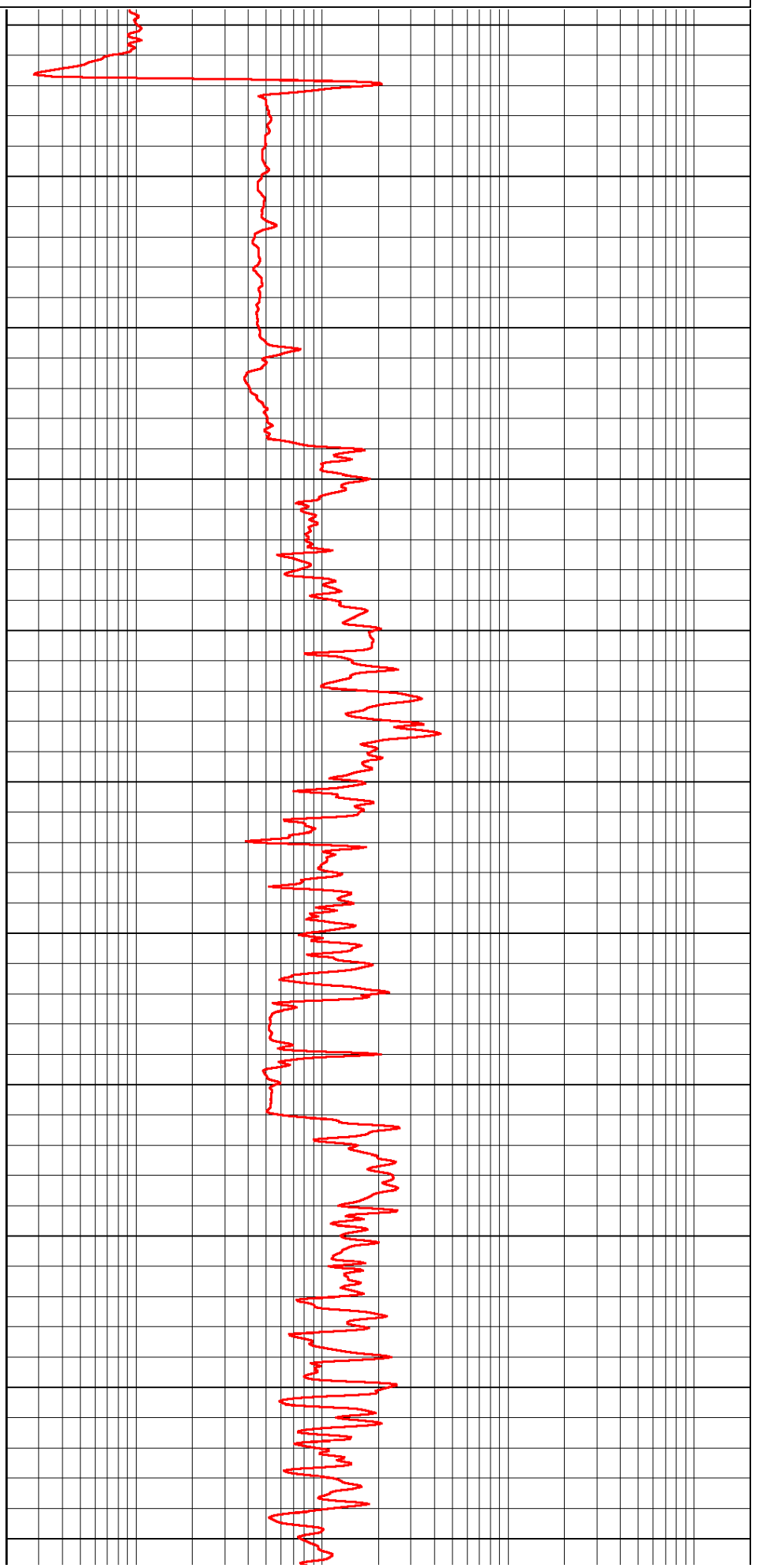
0 Gamma Ray (GAPI) 150

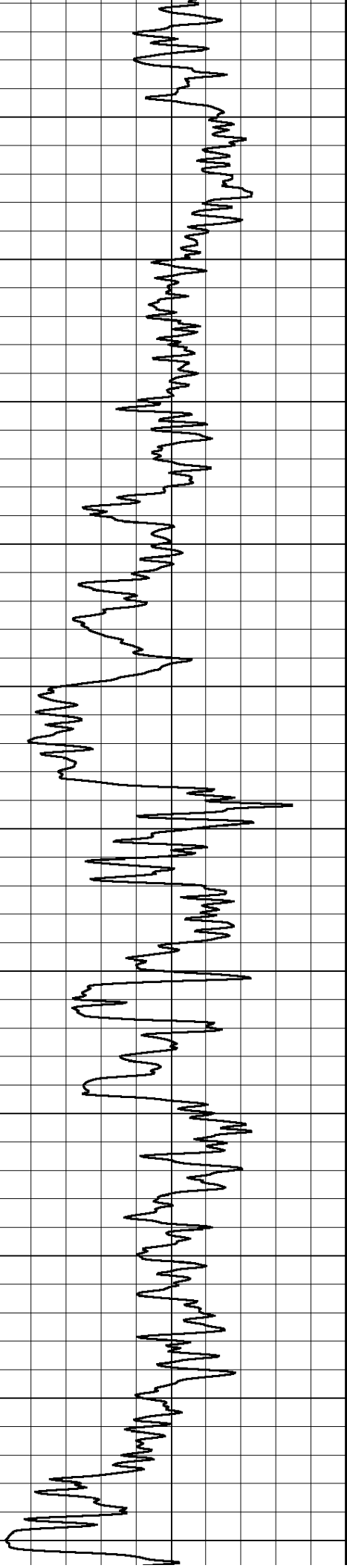
0.2 Igrd (Ohm-m)

2000



200
250
300
350
400
450
500
550
600
650
700





750

800

850

900

950

1000

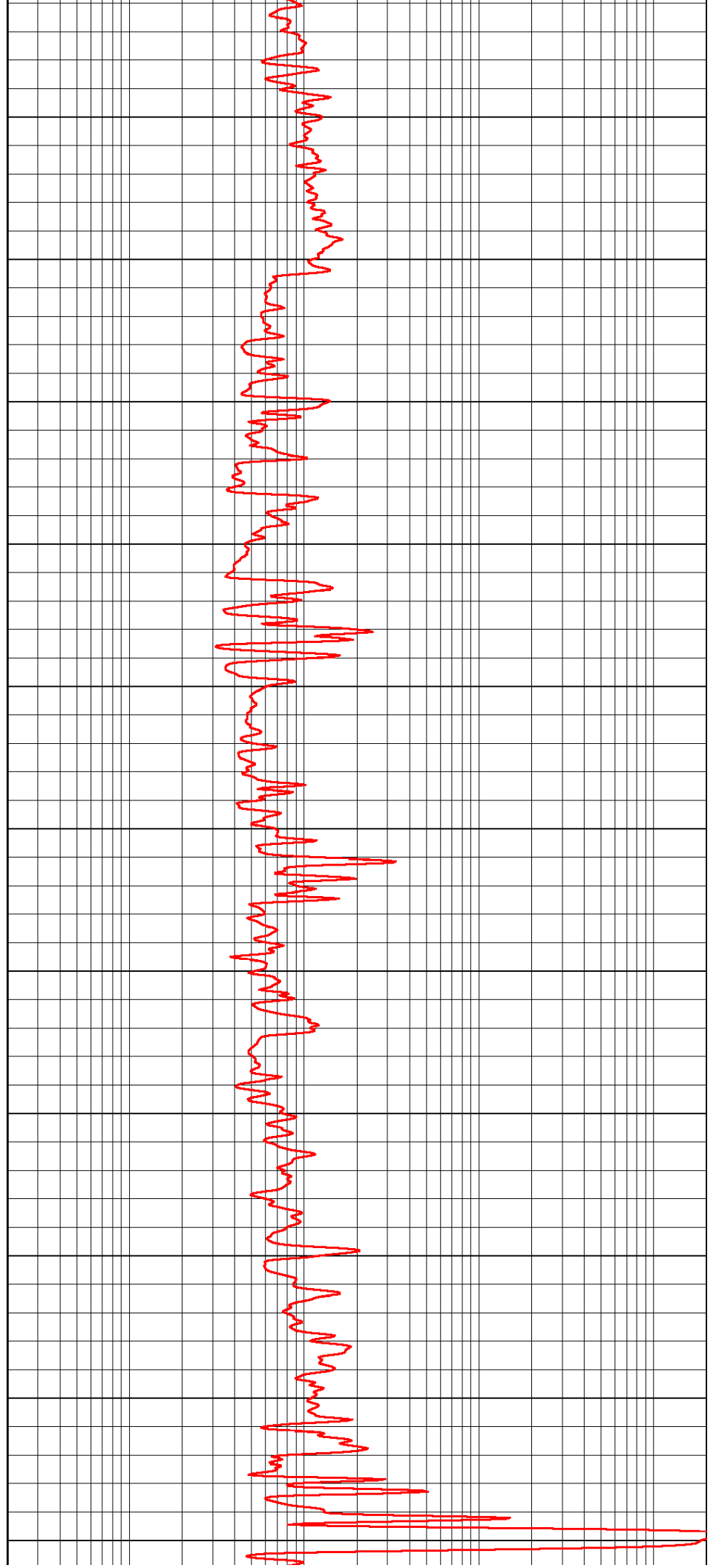
1050

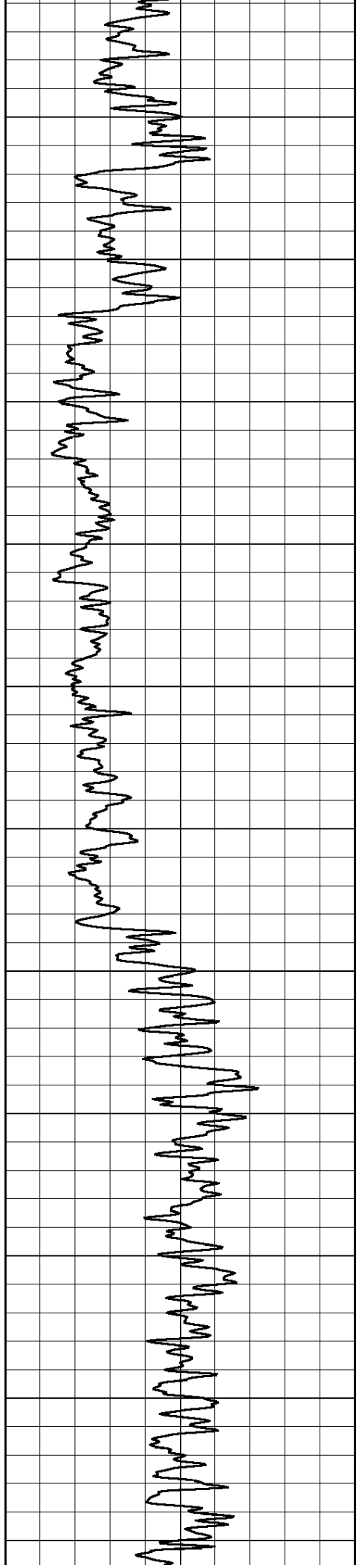
1100

1150

1200

1250





1300

1350

1400

1450

1500

1550

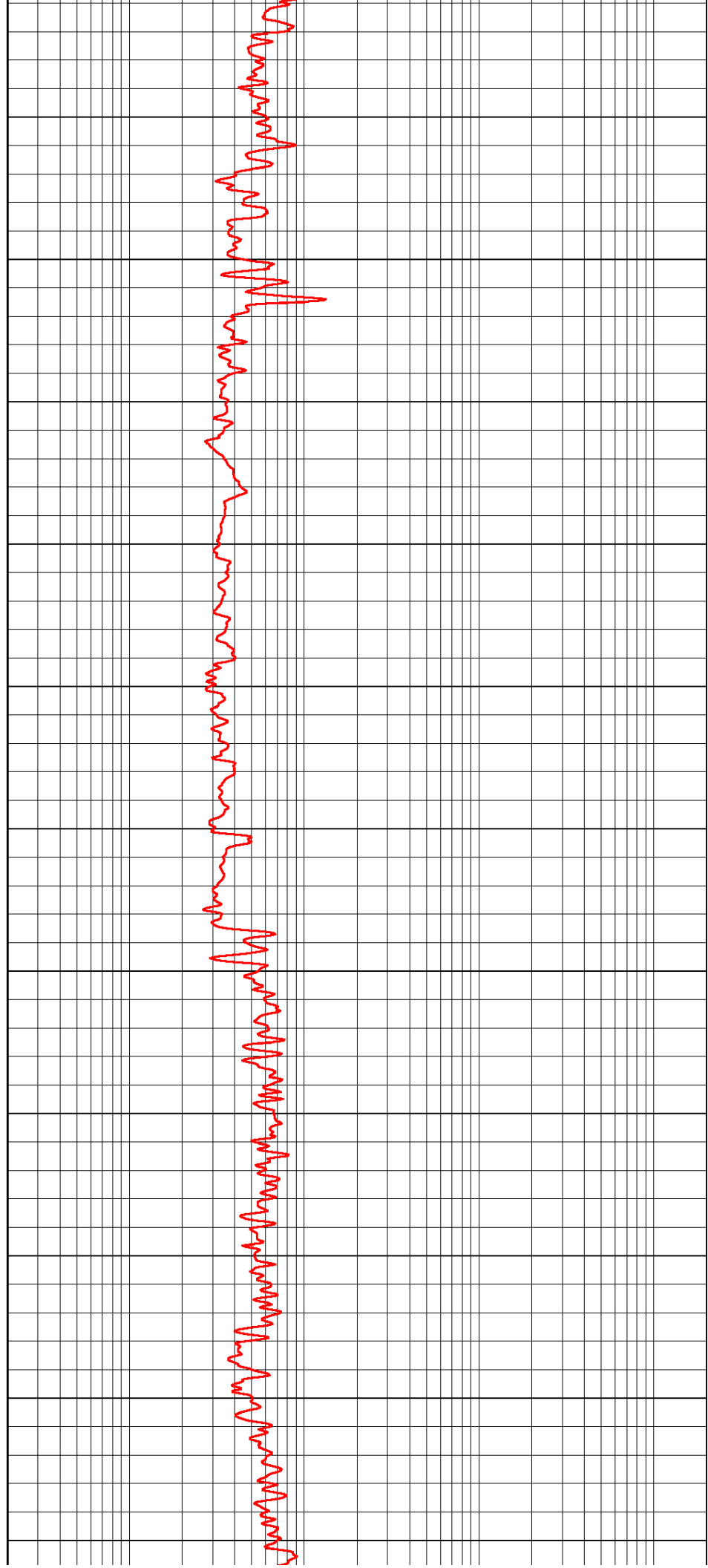
1600

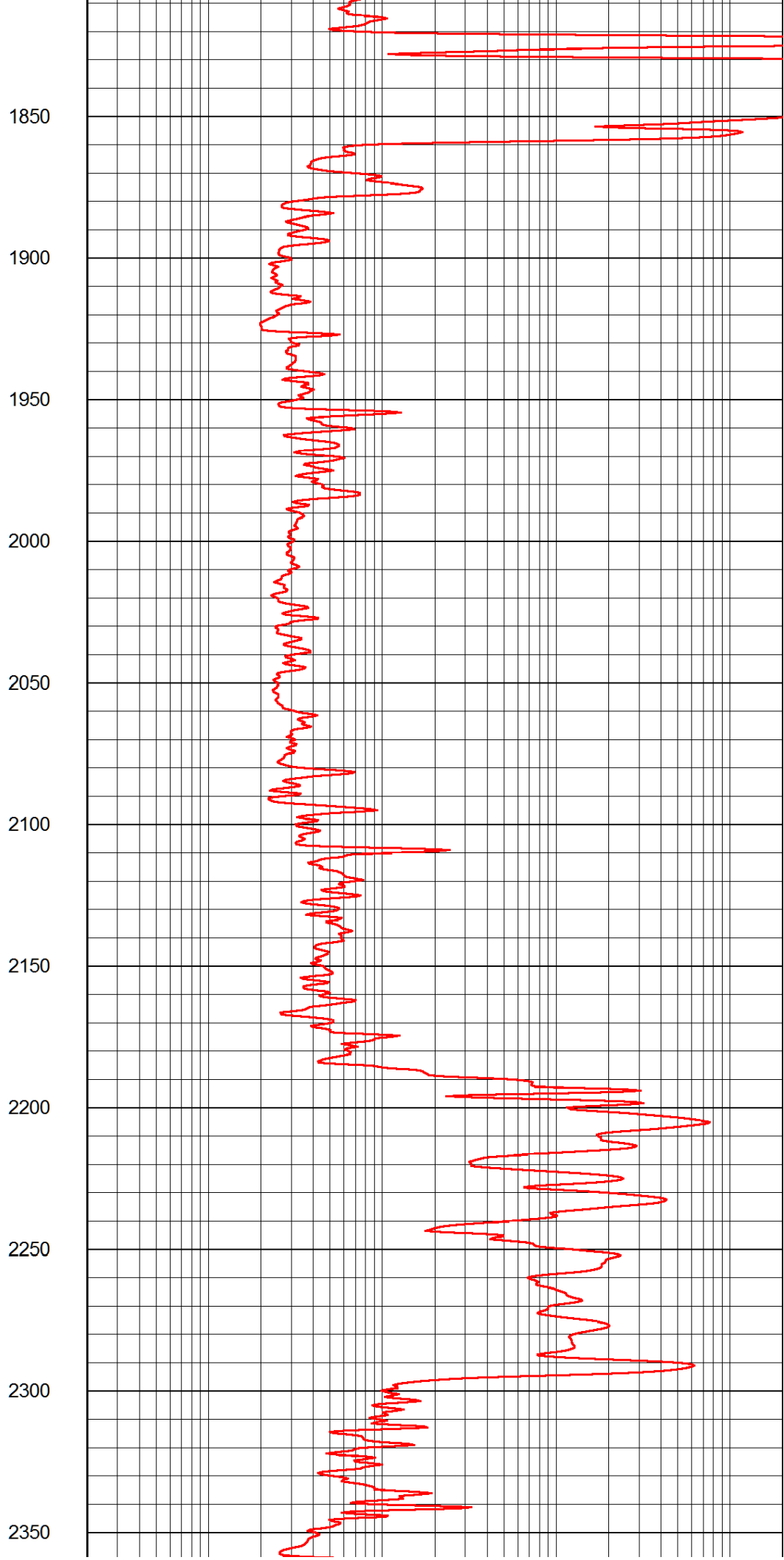
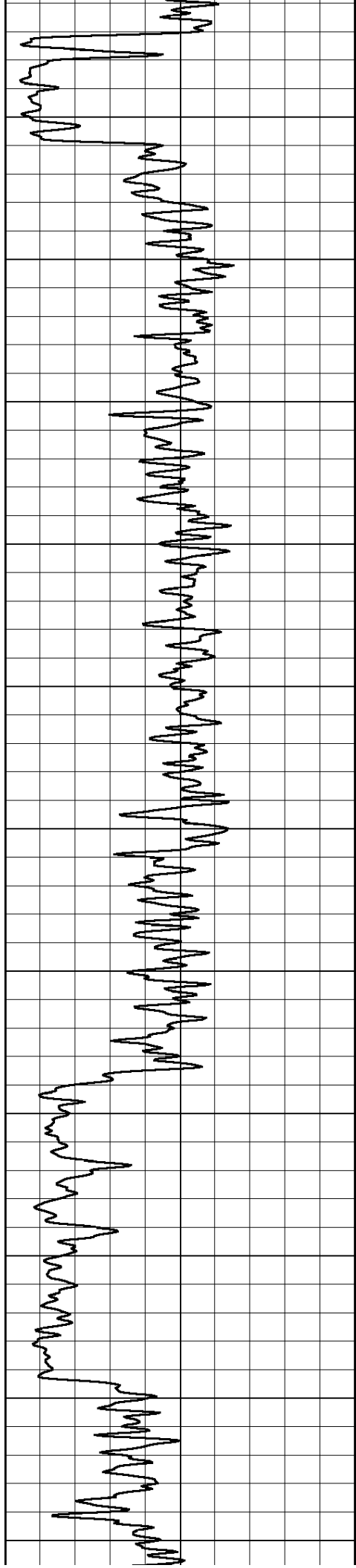
1650

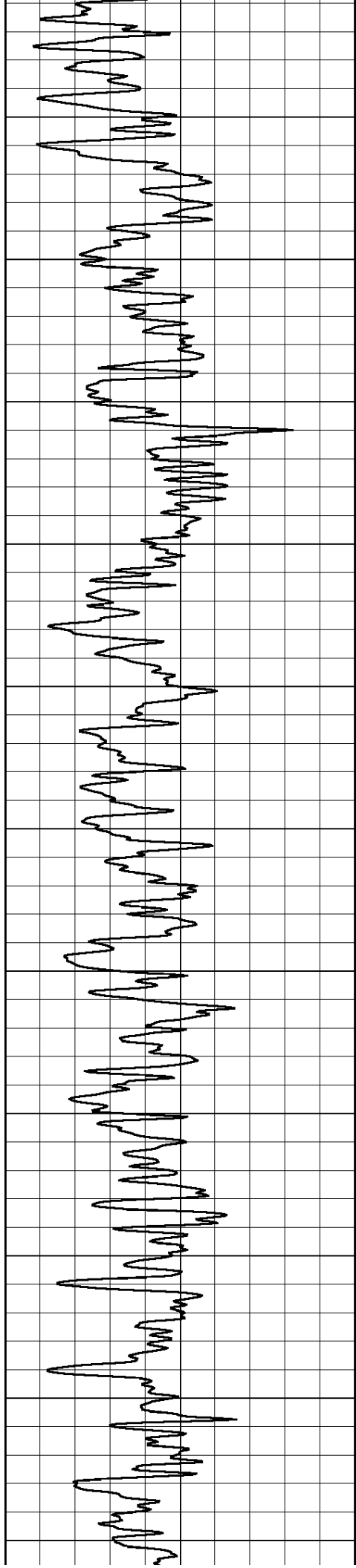
1700

1750

1800







2400

2450

2500

2550

2600

2650

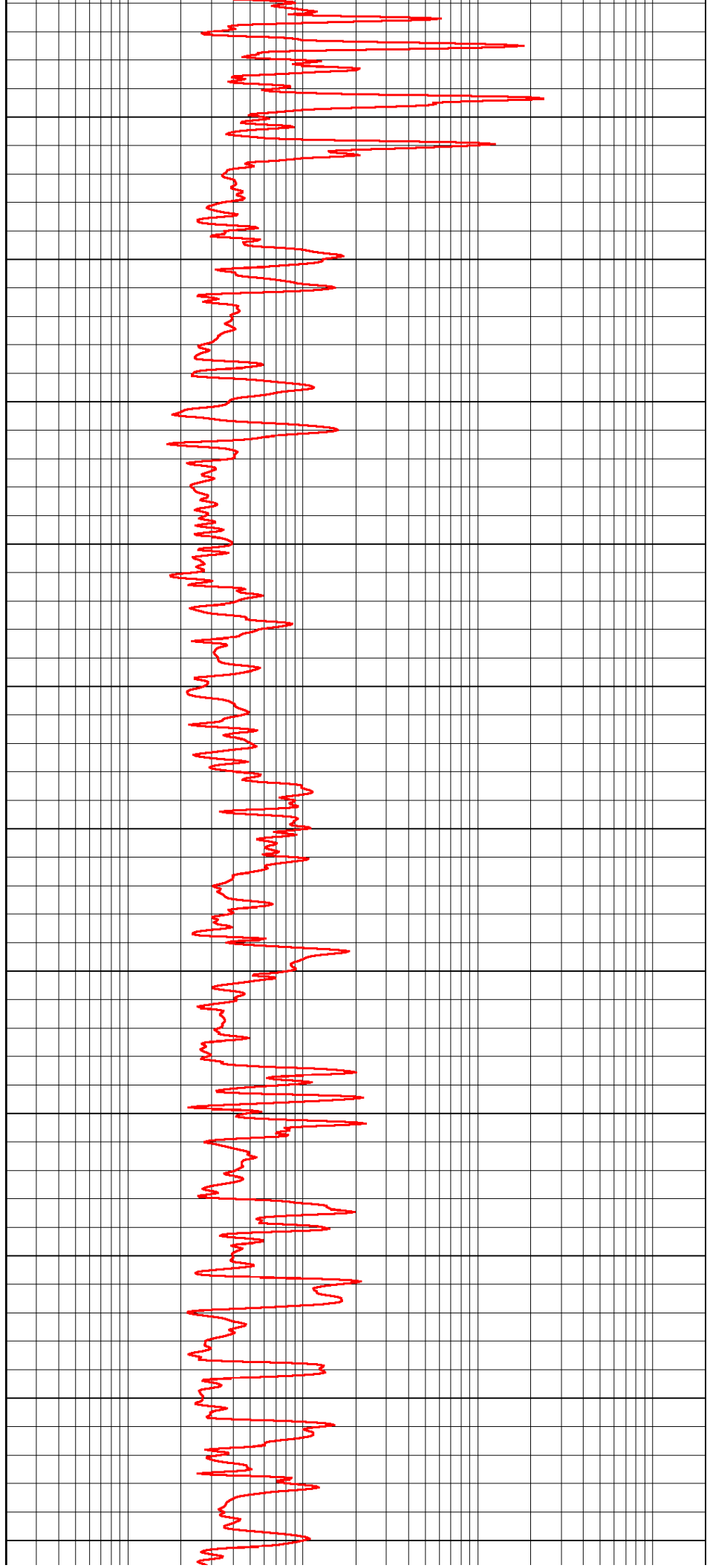
2700

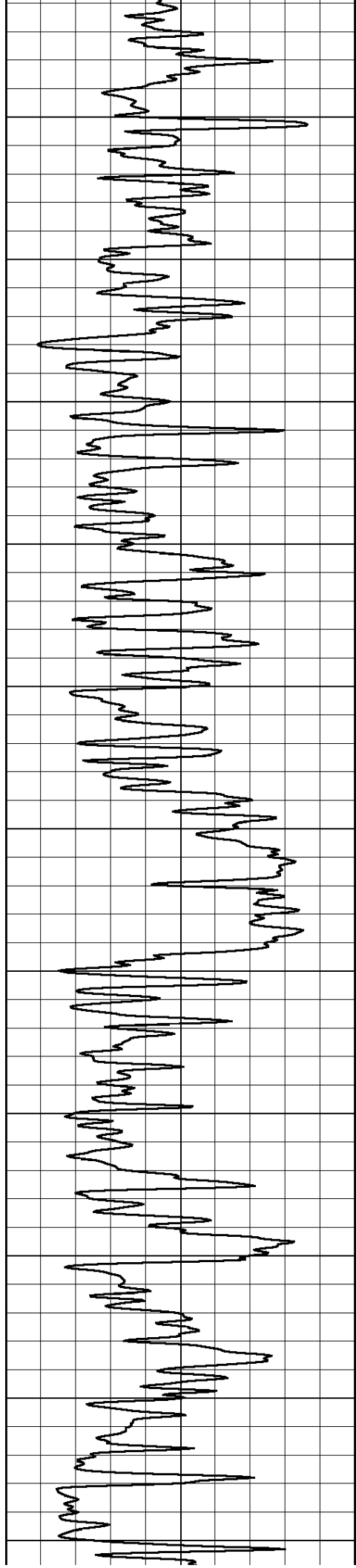
2750

2800

2850

2900





2950

3000

3050

3100

3150

3200

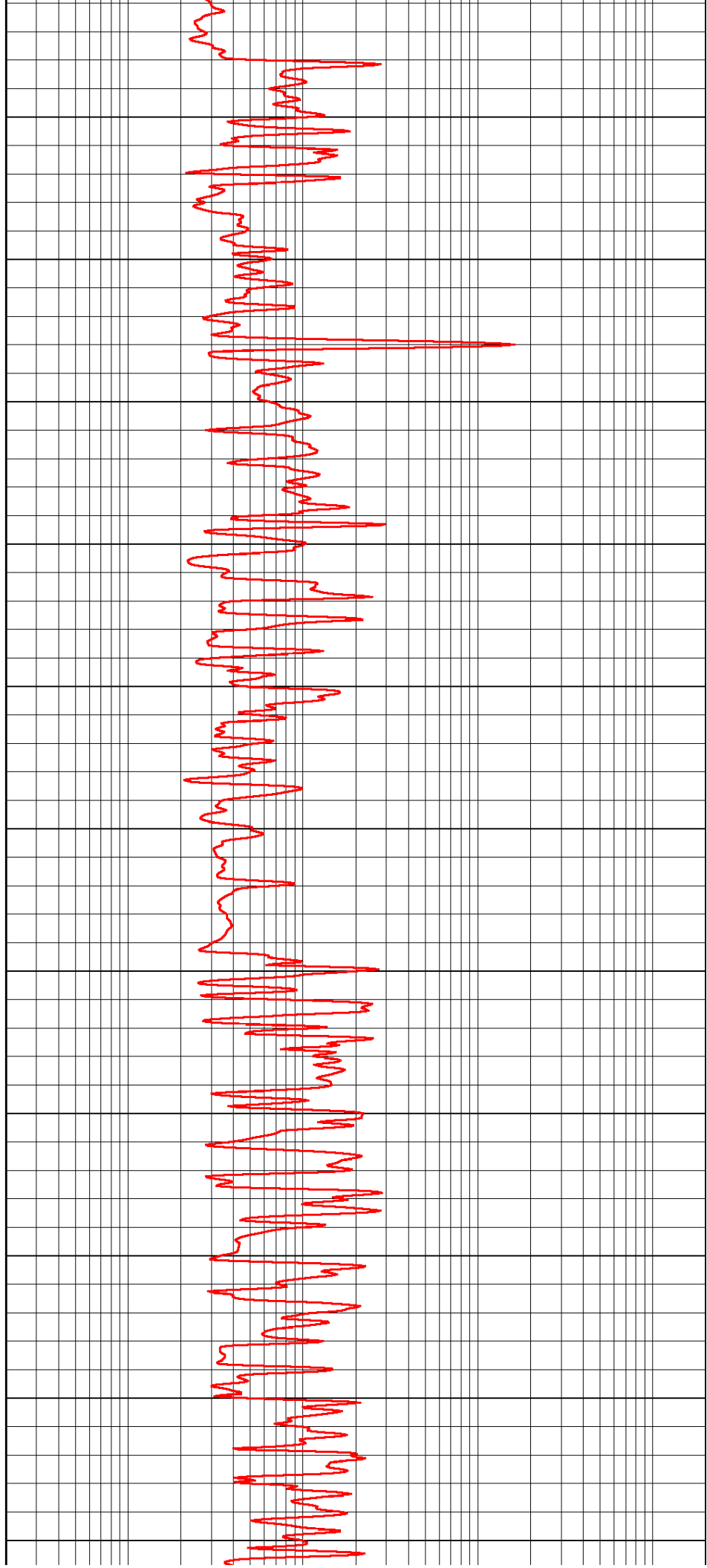
3250

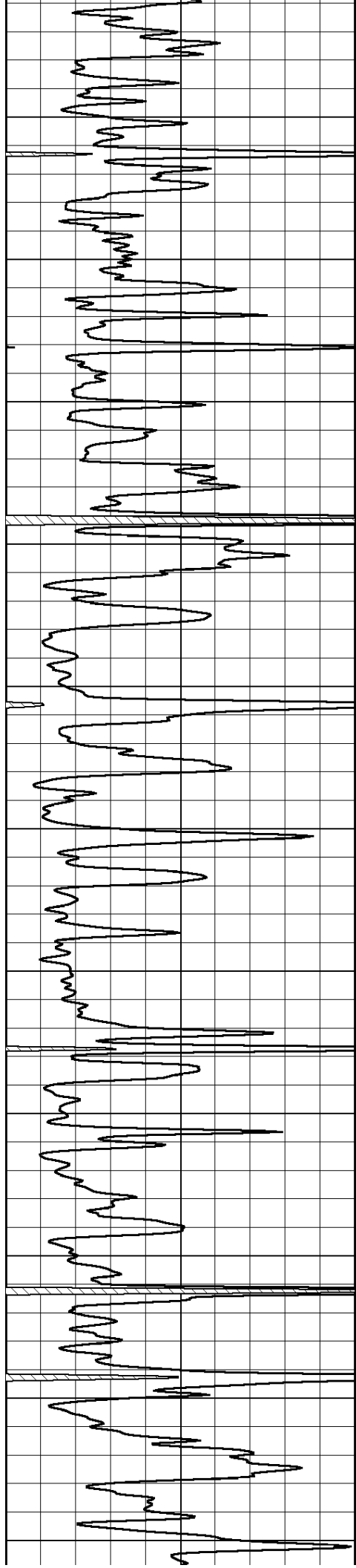
3300

3350

3400

3450





3500

3550

3600

3650

3700

3750

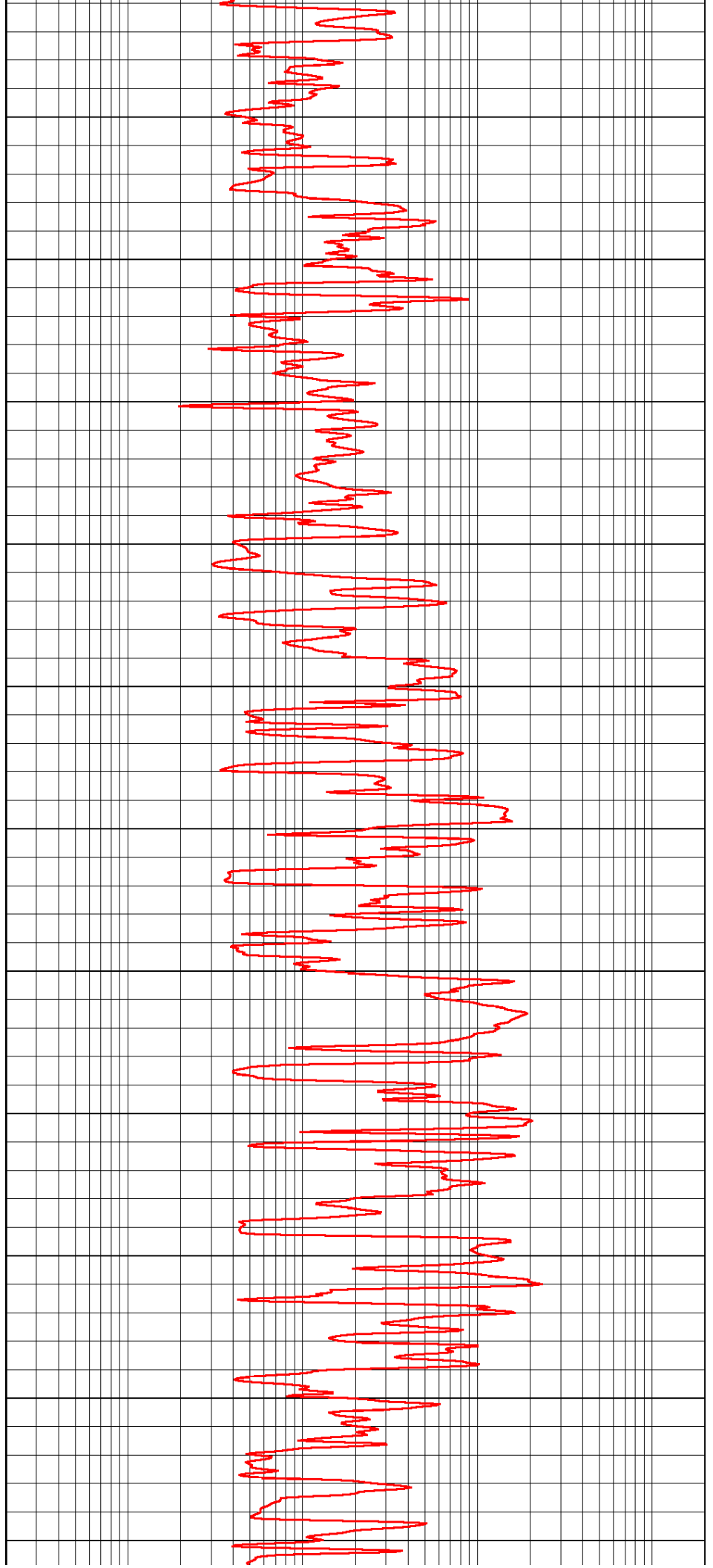
3800

3850

3900

3950

4000



3500

3550

3600

3650

3700

3750

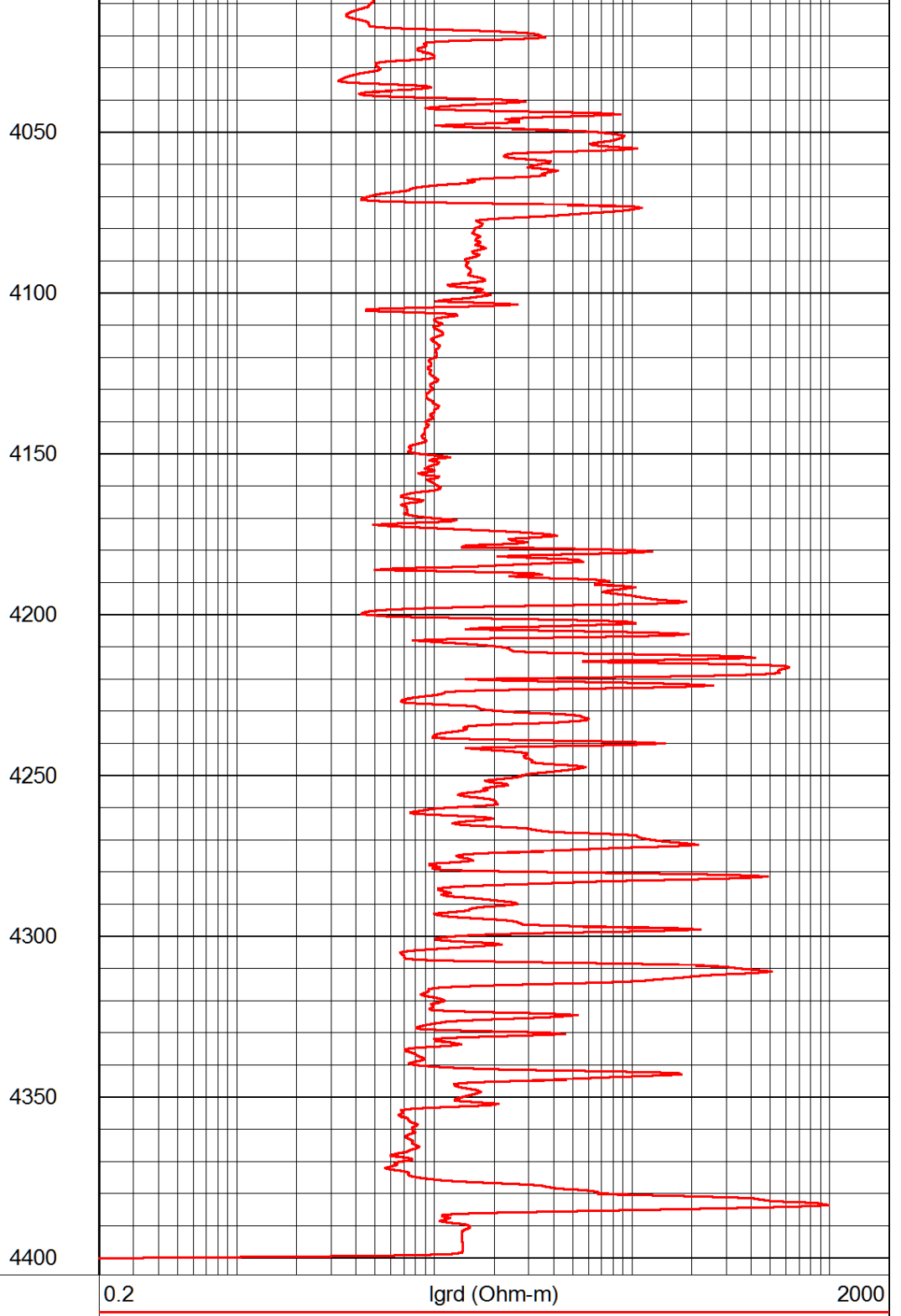
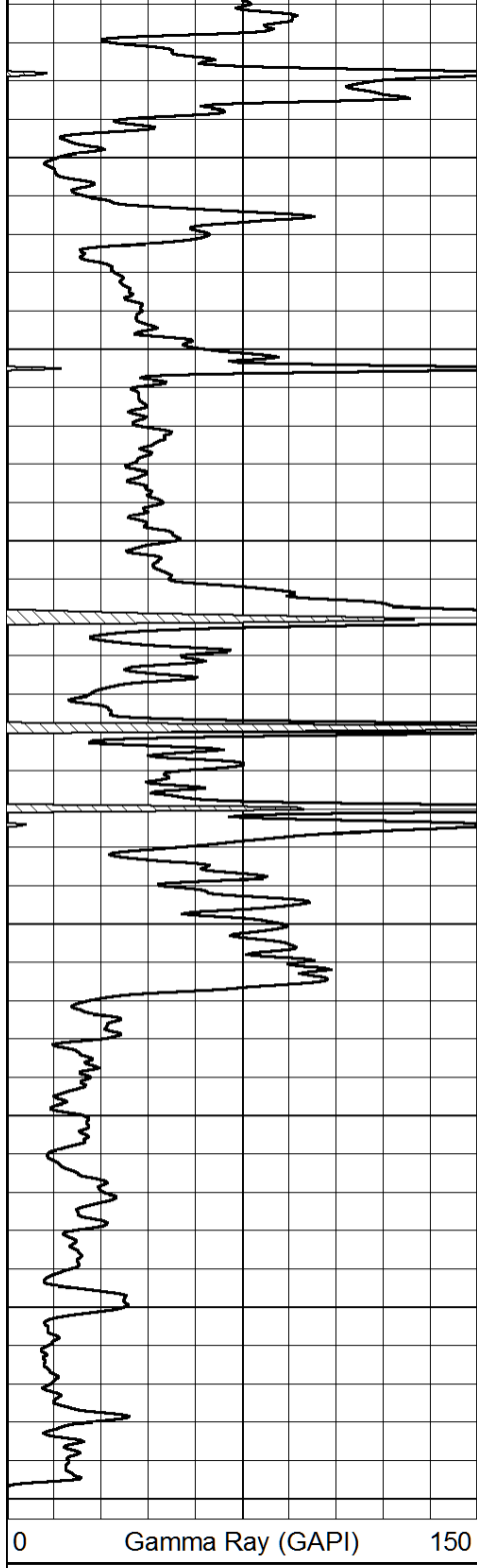
3800

3850

3900

3950

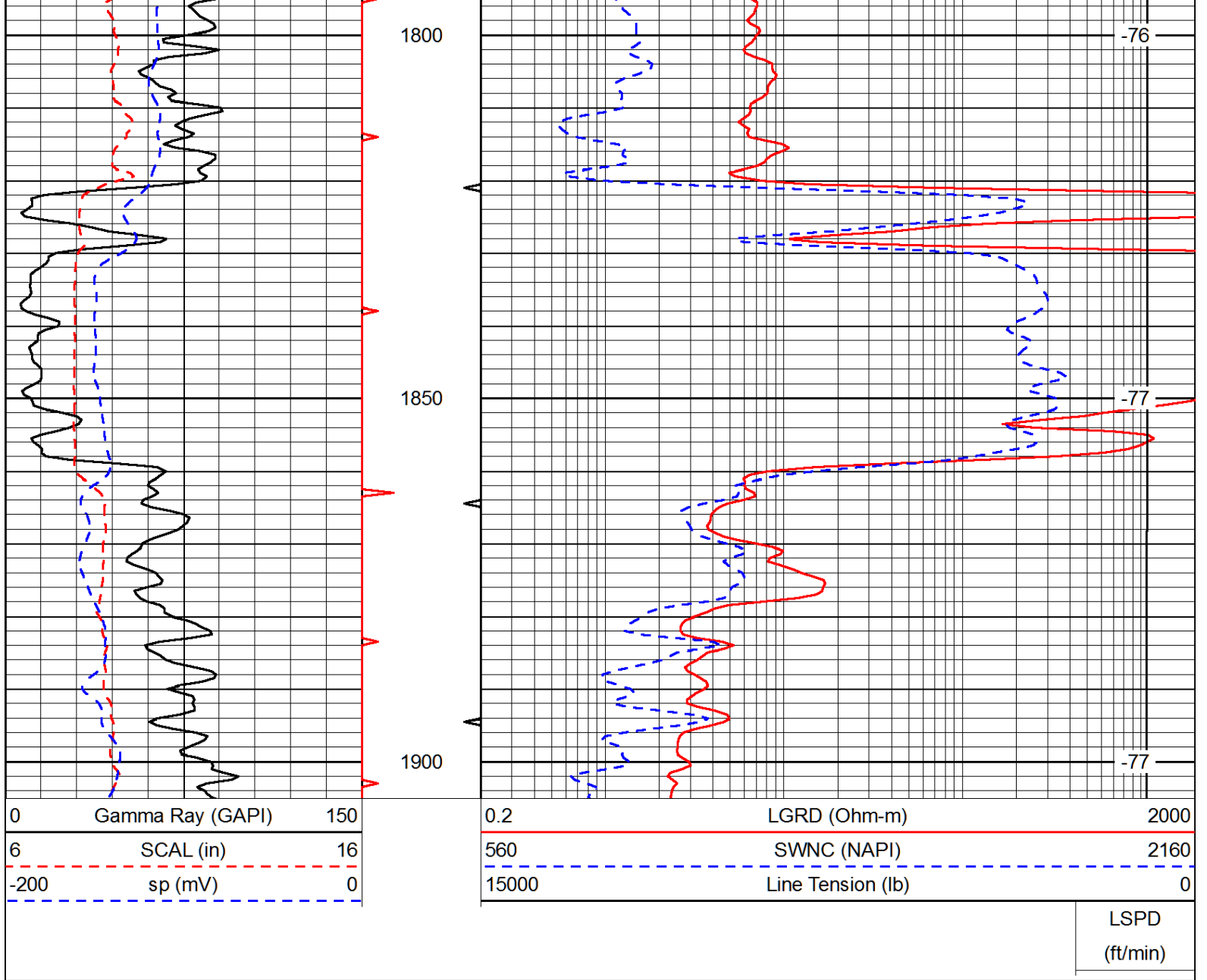
4000



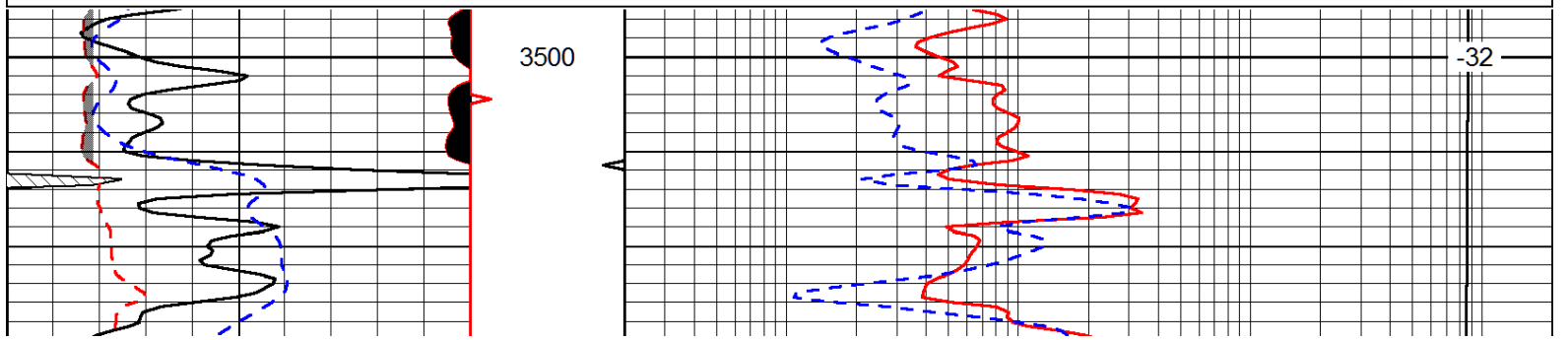
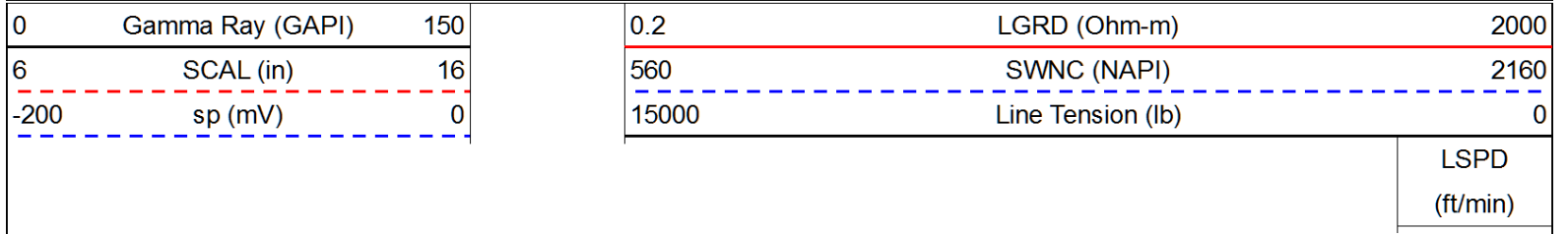
Database File: c:\warrior\data\palomino_elzatrebor_#1\palominohd.db
 Dataset Pathname: rag/palrag2
 Presentation Format: rag
 Dataset Creation: Wed Dec 19 16:28:26 2012
 Charted by: Depth in Feet scaled 1:240

0	Gamma Ray (GAPI)	150	0.2	LGRD (Ohm-m)	2000
6	SCAL (in)	16	560	SWNC (NAPI)	2160
-200	sp (mV)	0	15000	Line Tension (lb)	0

LSPD
(ft/min)



Database File: c:\warrior\data\palomino_elzatrebor_#1\palominohd.db
 Dataset Pathname: rag/palrag2
 Presentation Format: rag
 Dataset Creation: Wed Dec 19 16:28:26 2012
 Charted by: Depth in Feet scaled 1:240



40 30 20 15 10 5 1

POROSITY LIMESTONE (FLUID FILLED HOLE)

3550

-33

3600

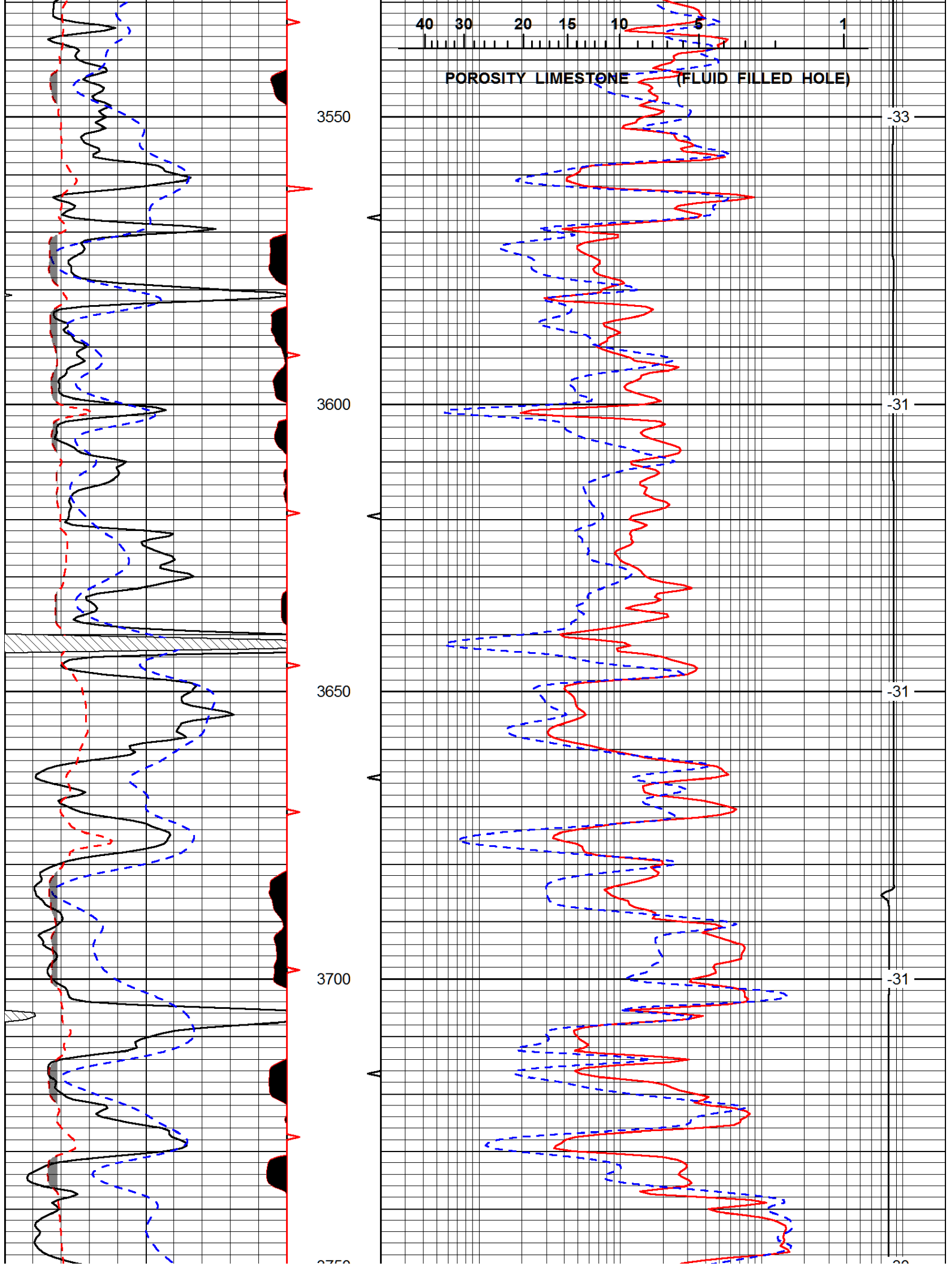
-31

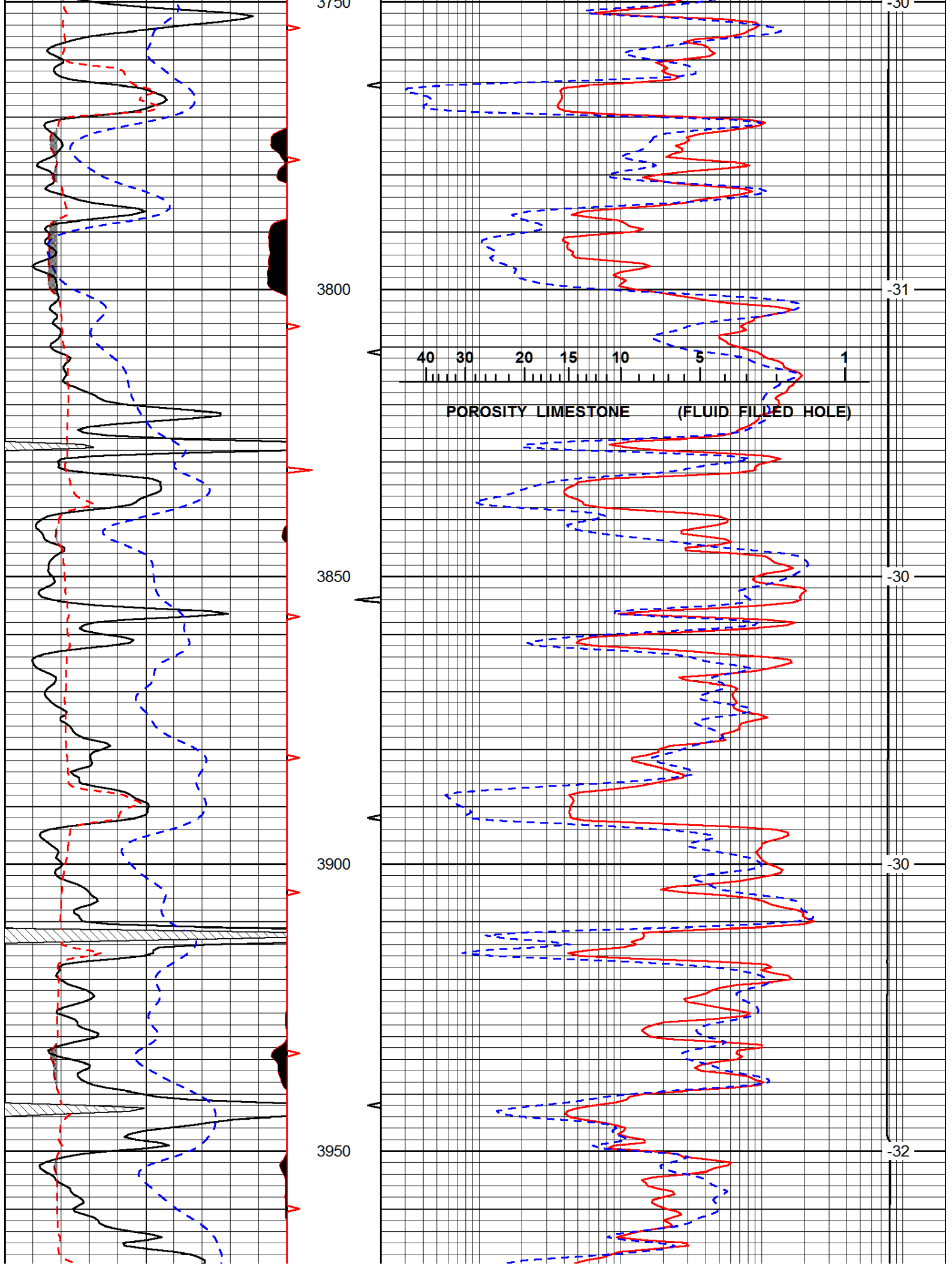
3650

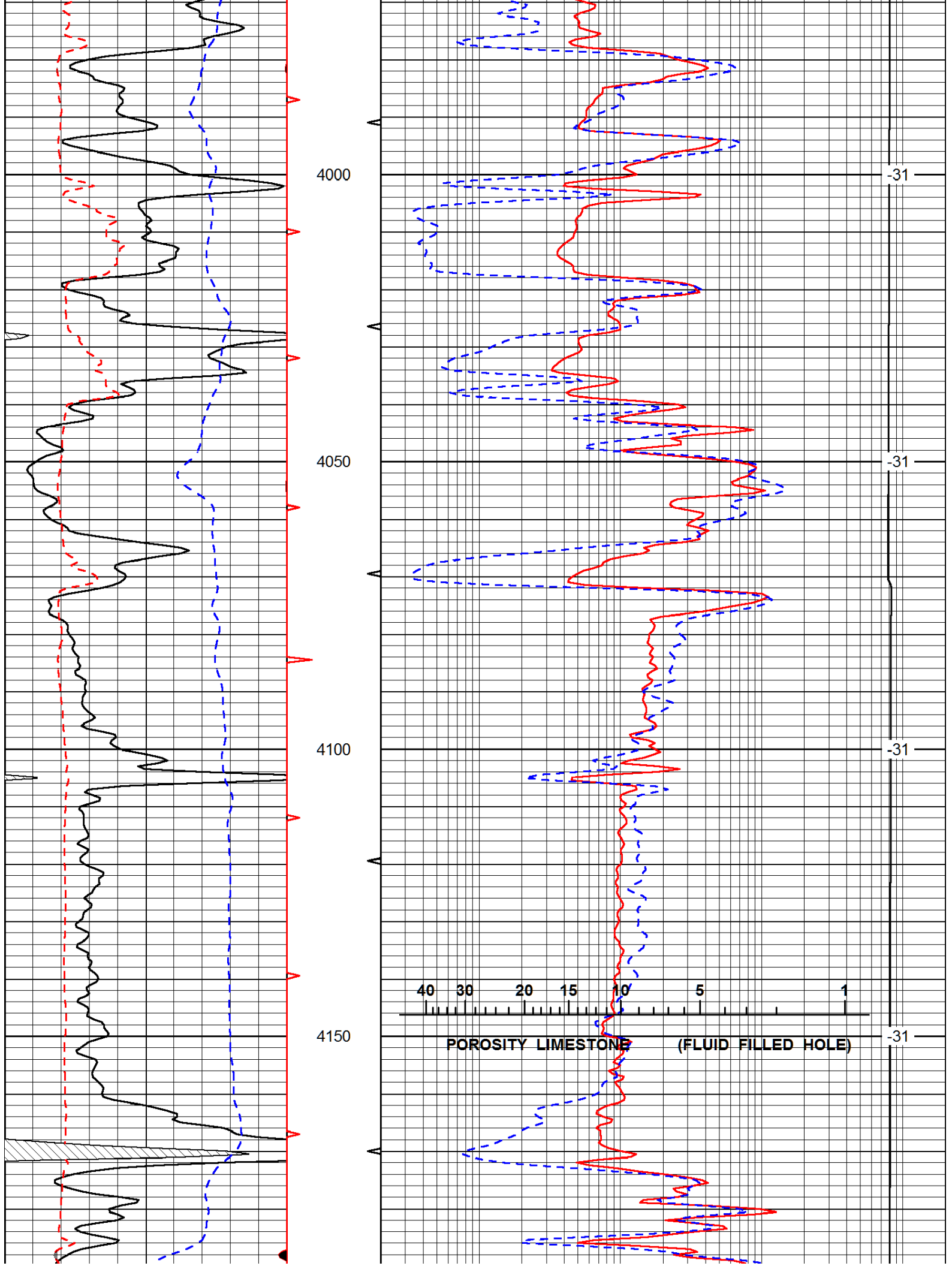
-31

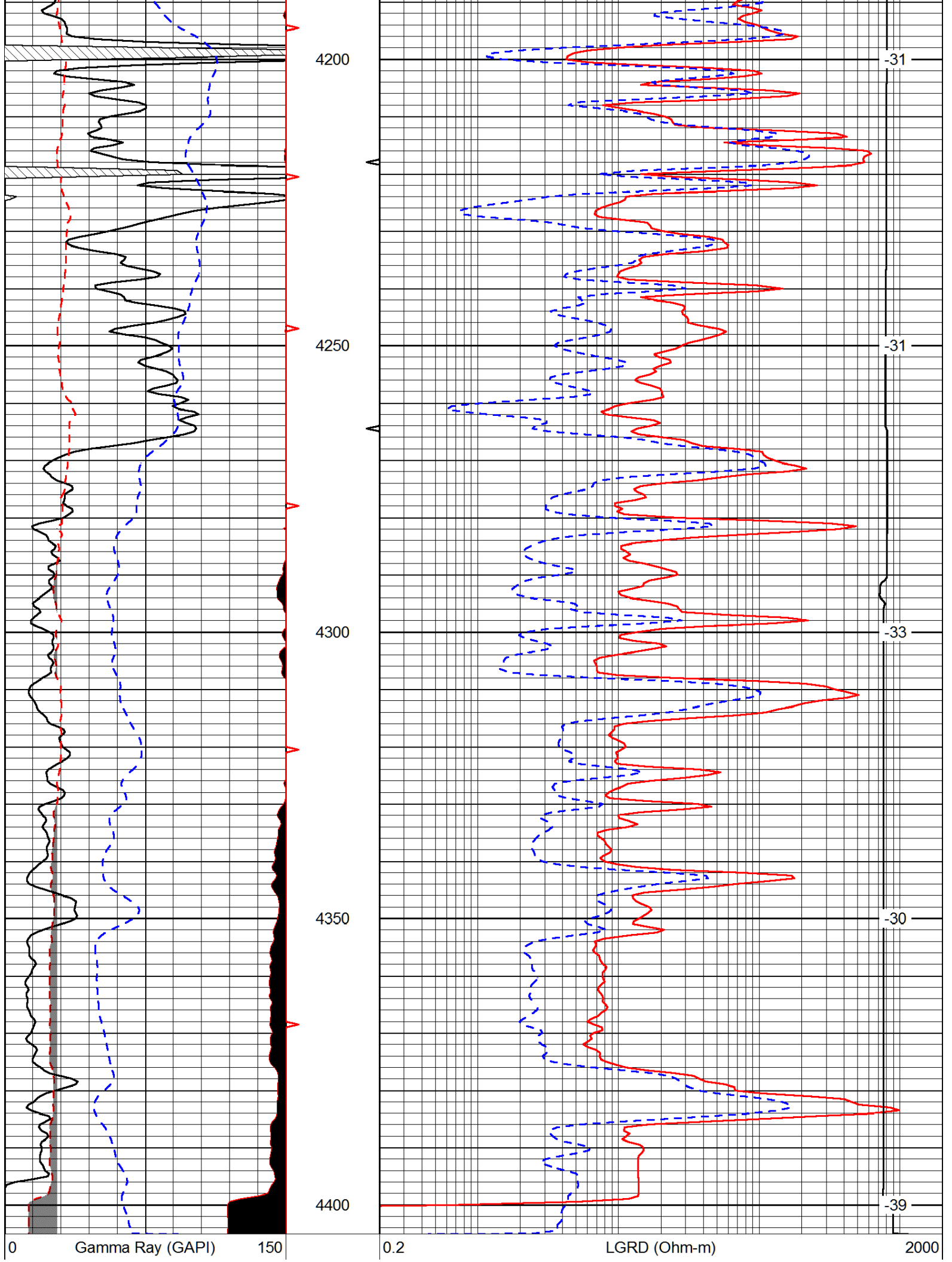
3700

-31









6	SCAL (in)	16
-200	sp (mV)	0

560	SWNC (NAPI)	2160
15000	Line Tension (lb)	0

LSPD (ft/min)
